

BILTMORE®

Fall Production Sale

FRIDAY, NOVEMBER 22ND 2024 AT 7 P.M.

Online at



Biltmore Estate, Asheville, NC

BILTMORE®

Fellow Livestock Enthusiasts,

On behalf of the entire Biltmore family, we are excited to welcome you back to the estate this fall for our 2nd Annual Production Sale. When George Washington Vanderbilt came to the mountains of Western North Carolina in the late 1800s, he aspired to create an estate modeled after the great European-style properties that were centered around agriculture and land management. We are proud that this is still central to the mission of Biltmore today and that you have chosen to explore our modern-day iteration of that vision. Our team's primary goal each and every day is to immerse our guests in the field to table philosophy that has been developed over the past nearly 130 years. We believe simply that we should deliver a high-quality product to our guests while utilizing an efficient, low-input maternal model. Whether you are studying our Angus cattle offering or our hair sheep, we believe those core principles are reflected.

We hope you will make plans to join us on the estate's "west side" for this unique event. We could not be prouder of the elite offering of program changing herd sire prospects, elite Angus females, and productive hair sheep available in this event. We are excited to host a product-focused program directly before the sale, featuring a carcass demo as well as an overview of Certified Angus Beef's new Ranch to Table Program. Following the programs, we hope you will join us for a Biltmore Field to Table lunch featuring numerous products grown right here on the property.

We hope you will be able to join us for the 2nd Annual Production Sale at Biltmore. We would be honored for you to consider our genetics in helping achieve the goals of your business and look forward to partnering with you in your success. We sincerely appreciate the interest you have shown in our program and truly appreciate your support of family farms, just like this one.

Sincerely,

Kyle Mayberry
Director of Agriculture

The crew have once again worked tirelessly to develop a set of animals worthy of the Biltmore brand! The Biltmore Livestock program is centered on offering cutting-edge genetics without sacrificing biosecurity to protect their animals, and yours, against introduction of production-limiting disease without sacrificing productivity. The program is driven to achieve, and each crop is better than the last. All animals offered have been screened for diseases of importance and are guaranteed to be healthy and productive Day One on the job. Preventative health protocols are followed meticulously by the crew and we believe animals are well prepared for whatever production environment they may enter. I truly believe that you as a buyer can rest assured that any animal purchased will work hard and be an asset to your livestock business.

Sincerely,

Harrison Dudley DVM

252-560-2009



SALE DAY PHONES:

Kyle Mayberry.....828.768.1956
Eric Ellis.....828.777.9254
Zach Moffitt.....336.736.6340



SALE MANAGER:

Zach Moffitt Cattle Marketing and Consulting
336.736.6340
zmoffitt19@gmail.com
zmoffittcattlemarketing.com

AUCTIONEER:

Will Thompson.....704.616.8553

LIVESTOCK REPRESENTATIVES:

Reese Tuckwiller, *Angus Journal*.....308.360.3048
Neil Bowman, NCDA919.270.7094
Billy Lewis, NCDA252.717.4529
Bryan Blinson, Special Assignment919.422.9108

TERMS AND CONDITIONS:

Cattle will sell under the suggested terms and conditions of the American Angus Association. Terms can be found online at www.angus.org/pub/suggested-sale-terms.pdf

VIEWING OF CATTLE AND SHEEP:

Cattle and Sheep for viewing on Saturday, November 16th and on Friday, November 22nd prior to the 7 p.m. Sale

TRUCKING:

Tom Snell.....580.374.4168
Tucker Coward.....336.402.4515

LIABILITY:

All persons who attend this sale do so at their own risk, legal or otherwise, for their safety or for the behaviour of the animals. The Biltmore Company, Sale Management, and the Sale Staff assume no liability, for property loss or accident that may occur.

HERD HEALTH:

All cattle sold will be accompanied by appropriate health papers for immediate shipment.

AM EPDs contained in the hard copy of this sale book were current as of print date. Digital versions of this sale book can be viewed online at www.angus.org and will have EPDs updated every Friday with the exception of EPD references in footnotes and photos. Any PDF downloads from the website will contain EPDs current as of the date downloaded. References: American Angus Association®, AHIR®, AngusLink®, CAB®, Pathfinder®.

HOTELS:

Village Hotel on Biltmore Estate:

207 Dairy Rd, Asheville, NC 28803
866.336.1245

The Inn on Biltmore Estate:

1 Antler Hill Rd, Asheville, NC 28803
800.411.3812

Towne Place Suites by Marriott:

141 S Bear Creek Rd, Asheville, NC 28806
828.575.9900

BULL DELIVERY AND DISCOUNTS:

For bull purchases of \$5,000 or more, Biltmore will offer free delivery for NC, SC, VA, TN, and GA. Also for bulls that are purchased for \$5,000 or more that are picked up on sale weekend, Biltmore will offer a \$100 discount for the first bull and \$50 for each additional bull.

YEARLING BULLS:

Yearling bulls can be left at Biltmore until 1.1.25 for continued development at no cost to the buyer. A Breeding Soundness Exam will be completed again prior to pick up or delivery at no cost.

LOAD OUT:

Load out for Cattle and Sheep: Saturday, November 23rd

We will have limited, small seating available for those that want to attend in-person. Please RSVP through biltmorelivestock.com if you are greatly interested attending in person versus online and we will let you know if tickets are available along with further information.

THE SALE OF LOTS 43C AND 43D WILL BE DONATED TO HURRICANE HELENE RELIEF EFFORTS.

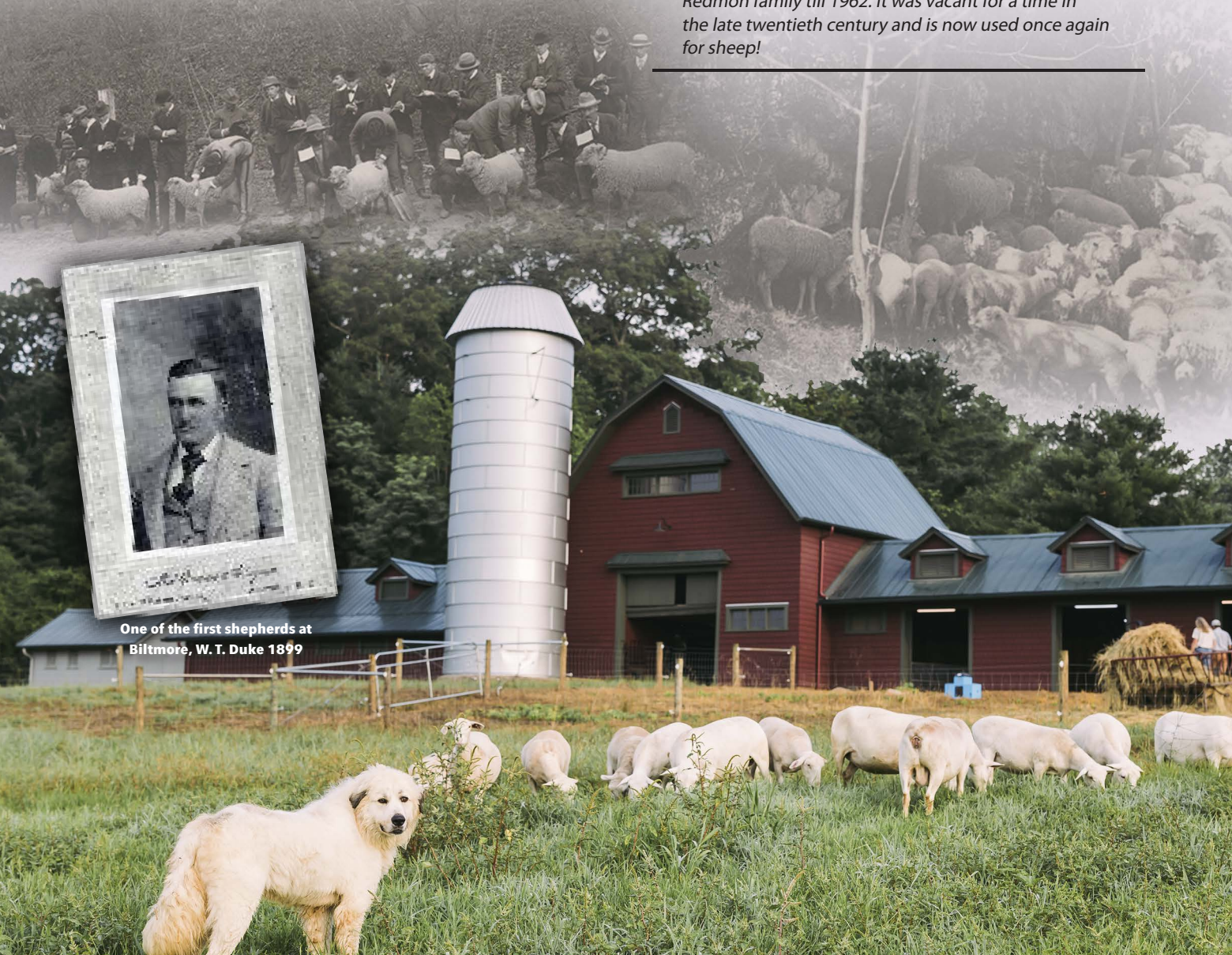
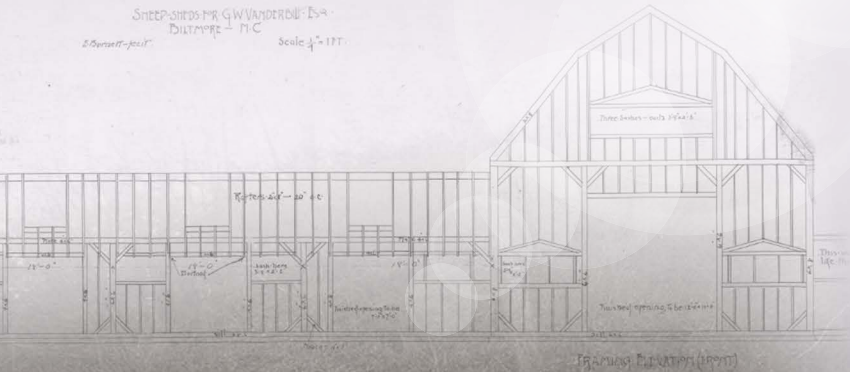
CCI LIVE Bid Live Online ccliive
"Gavel's Down, The Best in Online Marketing"
(516) 366-0734 CCI.live.schedule@cci.live

Our Legacy

A HISTORY OF OUTSTANDING LIVESTOCK

In an elbow of the French Broad River lies the earliest of Vanderbilt's extant western farms. Among the first group of new buildings at Biltmore, its sheep barn and shepherd's cottage were completed in 1892 while the main Biltmore house was still under construction. The sheep farm was an early component of Vanderbilt's plan for agricultural operations to support the estate, and significant efforts were made to develop a superior herd. Well before the barn was under construction, the Southdown breed was chosen and bought in North Carolina and farther afield, including a ram descended from the flock of the Prince of Wales, purchased late in 1890. Closer to home, sheep were supplied in 1891 by J.W. Jeudwine, a British barrister-turned-gentleman-farmer who had moved to Bowman's Bluff, a community south of Biltmore.

Vanderbilt continued to expand the herd after the barn was completed, adding six ewes and a herding dog in 1893 and 100 more ewes in 1895. In 1916, the barn was later converted for dairy cattle, leased by the Redmon family till 1962. It was vacant for a time in the late twentieth century and is now used once again for sheep!



One of the first shepherds at Biltmore, W. T. Duke 1899

Biltmore® Grown

Bring home a Taste of Biltmore®

Vanderbilt envisioned Biltmore as a working estate providing the finest produce, meat, and other products for family and guests. That legacy inspired Biltmore® Grown. We are dedicated to offering premium, pasture-based products as well a variety of estate-grown products such as sunflower oil, honey, cornmeal, and grits. By purchasing Biltmore® Grown, you can become part of our rich history.

Ingredients

- 1 pound Biltmore® Grown Ground Beef
- 1 pound Biltmore® Grown Ground Pork Sausage
- 1 yellow or white onion, finely chopped
- 1 clove garlic, minced
- 1 each 15 oz. can drained black beans
- 2 cup fresh or frozen corn kernels
- 2 cans diced tomatoes
- 1 cup chicken or beef broth
- 1 each green bell pepper diced
- 1 Tablespoon Biltmore® Spicewalla steak seasoning
- 2 tsp. salt or more to taste
- 1 tsp. ground black pepper
- ¼ teaspoon ground cayenne, optional
- 1 cup Biltmore® Grown Self Rising Cornmeal
- 1 cup Milk
- 1 whole egg
- 2 T. granulated sugar
- 2 T. sunflower oil

Biltmore® Grown HARVEST CHILI AND CORNBREAD CASSEROLE

Method

1. Preheat oven to 425 degrees. Generously butter a 3 quart casserole dish and set aside. In large cast iron pan, brown ground beef and sausage, stirring to break up. When meat is well brown, add onions, pepper and garlic, cook until onions are translucent, approximately 3 minutes. Stir in corn, diced tomatoes, black beans and broth, season with Spicewalla seasoning, salt and pepper, bring to a boil and then reduce heat to a simmer and let simmer for 10 minutes.
2. While chili is simmering, in a medium bowl combine cornmeal and sugar, whisk to incorporate. In separate bowl combine milk, egg and oil, whisk to combine. Whisk the milk mixture into the cornmeal mixture and combine well.
3. Pour chili into prepared 3 quart casserole dish and cover with the cornbread mixture. The mixture will sink but will rise during baking.
4. Place in oven and bake for 20-25 minutes until cornbread is well browned.
5. Serve immediately with sour cream, hot sauce, sliced green onions or your favorite chili toppings!



TO ORDER:
800-968-0558
BILTMORESHOP.COM

2-Year-Old Bulls

- 133K is a really complete bull to lead the book off with. He has the physical presence, style, and muscle that you want to see in a bull. He is a full brother to one of our top donors here at Biltmore, Lucy 148J, you will see great examples of her influence in the female offering of the sale. 133K also reads very well on paper as he possesses plenty of calving ease, growth, maternal value, hair shed, and excellent carcass values. All of his \$Values indicate added value to your calf crop, he should go on the short list.
- Top 25% or better for CED, WW, YW, Radg, HP, CEM, PAP, HS, CW, Marb, Dairy Indexes, \$W, \$F, \$G, \$B and \$C!



Lot 1 - Biltmore Home Town 133K

1 | Biltmore Home Town 133K

DOB: 09-07-2022 Bull #*20576128 Tattoo: 133K
 #+*G A R Ashland *G A R Early Bird
 *G A R HOME TOWN +*Chair Rock Ambush 1018
 19266718 +*Chair Rock Sure Fire 6095
 #+*G A R Sure Fire
 +*Chair Rock Progress 3005



ACT. BW 80
 ADJ. 205 568
 ADJ. 365 1040
 ADJ. %IMF 3.05
 ADJ. UREA 9.3

*EXAR Stallion 7986
 *EXAR LUCY 9264
 19476240 EXAR Lucy 3056

\$AxH	+220	4%	\$AxJ	+190	10%						
CED	+10	+2.2	+83	+142	+75	+13	+14.0	+22	+11	-21	+29
25%	25%	75%	10%	15%	60%	80%	35%	80%	25%	65%	15%
CLAW	+0.61	+0.46	+0.70	+1.54	+0.68	+0.17	+0.70	+0.74	+0.219	+0.354	
ANGLE	90%	40%	15%	3%	50%	50%	35%	20%	2%	2%	

Dam's Production	Avg. Calving Interval	Avg. Act. BW	19-76	BWR	1-101	WWR	YWR														
CED	BW	WW	YW	DMI	YH	SC	DOC	HP	CEM	MLK	MW	MH	CW	MRB	RE	FAT	TND	PAP	CLW	ANGL	HS
32	69	38	26	33	64	53	67	22	45	70	54	53	25	5	48	24	69	11	89	30	24

2 | Biltmore Home Town 147K

DOB: 09-14-2022 Bull #*20576146 Tattoo: 147K
 #+*G A R Ashland *G A R Early Bird
 *G A R HOME TOWN +*Chair Rock Ambush 1018
 19266718 +*Chair Rock Sure Fire 6095
 #+*G A R Sure Fire
 +*Chair Rock Progress 3005



ACT. BW 73
 ADJ. 205 594
 ADJ. 365 1074
 ADJ. %IMF 3.71
 ADJ. UREA 10.0

*Connealy Consensus 7229
 EXAR LUCY 3056
 17462665 EXAR Lucy 1061

\$AxH	+157	25%	\$AxJ	+121	40%						
CED	+8	+6	+56	+106	+1.47	+11	+12.0	+22	+4	-4	+18
40%	40%	35%	80%	70%	15%	85%	55%	80%	90%	20%	10%
CLAW	+0.52	+0.45	+0.42	+1.22	+0.61	-0.014	+0.59	+0.52	+0.173	+0.283	
ANGLE	60%	35%	80%	15%	60%	20%	65%	75%	25%	30%	

Dam's Production	Avg. Calving Interval	474	Avg. Act. BW	51-75	BWR	3-105	WWR	3-96	YWR	2-97											
CED	BW	WW	YW	DMI	YH	SC	DOC	HP	CEM	MLK	MW	MH	CW	MRB	RE	FAT	TND	PAP	CLW	ANGL	HS
68	61	84	50	36	67	12	83	59	90	69	82	93	67	13	55	9	52	17	57	29	4



Lot 2 - Biltmore Home Town 147K

- 147K is an excellent calving-ease selection in the offering, with added fertility, and carcass value. He adjusted right at 600 pounds of weaning weight and has continued to develop into a stout, well-muscled bull. Study his pedigree as he is a full brother to Lot 3 and very closely related to Lot 1. If you are in need of multiple bulls with genetic similarity, then keep your eyes on these Home Town sons.
- Top 25% or better for DMI, SC, PAP, HS, Marb, Fat, \$AxH, \$G and \$B.

2-Year-Old Bulls

- 172K is a calving ease specialist and old enough to cover a good group of heifers. He is a full brother to Lot 2. He offers double digit calving ease with Top 4% BW epd, growth, fertility, balanced management traits and top 15% Marbling. He also possesses a top 15% Maternal Index so you may want to evaluate him for keeping replacement heifers. For those of you who are needing a bull to impact the ability for cattle to shed these Home Town sons, Lots 1-3 are worth the look!
- Top 25% or better for CED, BW, DMI, HP, Milk, \$EN, Angle, PAP, Marb, \$M, \$G, and \$C.



Lot 3 - Biltmore Home Town 172K

B 3 | Biltmore Home Town 172K

DOB: 09-20-2022 Bull #*20619699 Tattoo: 172K
 #+*G A R Ashland *G A R Early Bird
 *G A R HOME TOWN +*Chair Rock Ambush 1018
 19266718 +*Chair Rock Sure Fire 6095

#*Connealy Consensus 7229
 EXAR LUCY 3056
 17462665 EXAR Lucy 1061

\$AxH	+145	30%	\$AxJ	+109	45%										
CED	+14	-1.8	+57	+101	+1.26	+15	+14.9	+32	+9	-7	+39	ACT. BW	86		
4%	5%	75%	75%	25%	70%	25%	15%	45%	30%	30%	ADJ. %IMF	3.31			
CLAW	+52	+42	+42	+1.21	+44	+0.009	+76	+68	+167	+293	ADJ. UREA	8.4			
60%	20%	80%	15%	80%	40%	20%	35%	30%	20%	20%					

Dam's Production	Avg. Calving Interval	474	Avg. Act. BW	51-75	BWR	3-105	WWR	3-96	YWR	2-97											
CED	BW	WW	YW	DMI	YH	SC	DOC	HP	CEM	MLK	MW	MH	CW	MRB	RE	FAT	TND	PAP	CLW	ANGL	HS
6	7	92	74	18	84	16	70	12	77	19	88	73	81	7	73	19	78	14	59	23	21

B 4 | Biltmore Wildcat 173K

DOB: 09-20-2022 Bull #*20574566 Tattoo: 173K
 +*GAR Discovery 6737H #*V A R Discovery 2240
 *E & B WILDCAT 9402 *G A R Ingenuity 3132
 19810163 E&B Lady Plus 643 #*Connealy Confidence Plus
 #+E&b Lady Credence 190

#Connealy Thunder #Baldrige Kaboom K243 KCF
 +*BILTMORE DONNA 176F #Parka of Conanoa 241
 19729041 #+*Coleman Donna 063 #*O C C Juneau 807J
 +*Coleman Donna 714

\$AxH	+163	20%	\$AxJ	+132	35%										
CED	+6	+1.6	+68	+128	+50	+24	+15.5	+29	+8	-11	+02	ACT. BW	84		
55%	60%	45%	30%	75%	30%	20%	35%	55%	35%	1%	ADJ. %IMF	2.68			
CLAW	+44	+45	+59	+83	+78	-010	+85	+68	+177	+315	ADJ. UREA	10.2			
30%	35%	35%	40%	40%	20%	10%	35%	20%	10%						

Dam's Production	Avg. Calving Interval	365	Avg. Act. BW	4-67	BWR	4-90	WWR	4-97	YWR	1-106											
CED	BW	WW	YW	DMI	YH	SC	DOC	HP	CEM	MLK	MW	MH	CW	MRB	RE	FAT	TND	PAP	CLW	ANGL	HS
66	74	66	18	39	92	70	24	12	46	56	85	94	37	29	40	24	73	67	30	37	2



Lot 4 - Biltmore Wildcat 173K

- This Wildcat son has the presence and masculinity you want to see in a herd bull. He comes from a Connealy Thunder daughter who has earned a 101.78 MPPA (Most Probable Producing Ability) in the herd. He is a moderate BW bull with above average growth, top 10% maternal value, balanced management traits with excellent hair shed EPD, and balanced carcass values. He is a well-rounded bull as the Wildcats have been. All \$Values indicate a profitable calf crop.
- Top 25% for Radg, HP, HS, Fat, \$AxH, \$M, \$F, \$B and \$C.

2 Year Old Bulls

- 165K is a 3/4 sibling to Lot 6 and would be a good match to put a set of bulls together for larger herds. The Wildcat sons have been received well around the country. They have plenty of muscle and length, and will make a great set of calves to market. 165K is top 25% for BW with above average maternal value, above average management traits, and top 15% for Marbling for those of you who are selling beef.
- Top 35% for BW, DMI, YH, HP, CEM, MH, Doc, Angle, HS, Marb, \$F, \$G, \$B and \$C.



Lot 5 - Biltmore Wildcat 165K

B 5 | Biltmore Wildcat 165K

DOB: 09-19-2022 Bull *20574570 Tattoo: 165K
 +*GAR Discovery 6737H #*V A R Discovery 2240
 *E & B WILDCAT 9402 *G A R Ingenuity 3132
 19810163 E&B Ladv Plus 643 #*Connealy Confidence Plus

+*Biltmore N Bar Shadow 123A #+E&b Lady Credence 190
 BILTMORE DORA 223E N Bar Shadow X4124
 19243662 Biltmore Dora 32A #+Sinclair Eriskav 2N1 7883
 #*Apex Windy 078
 Biltmore Dora 16L

\$AxH	+112	50%	\$AxJ	+87	55%											
CED	BW	WW	YW	SC	DOC	HP	MILK	CEM	\$EN	HS						
+8	+2	+65	+113	+71	+25	+13.7	+23	+10	-21	+29						
40%	30%	55%	60%	65%	25%	35%	75%	35%	65%	15%						
CLAW	ANGLE	CW	MARB	RE	FAT	\$M	\$W	\$B	\$C							
+4.5	+4.2	+5.6	+1.21	+5.4	+0.06	+6.6	+6.0	+1.86	+3.07							
35%	20%	45%	15%	70%	40%	45%	55%	15%	15%							

Dam's Production	Avg. Calving Interval	458	Avg. Act. BW	4-70	BWR	4-95	WWR	3-92	YWR	1-92											
CED	BW	WW	YW	DMI	YH	SC	DOC	HP	CEM	MLK	MW	MH	CW	MRB	RE	FAT	TND	PAP	CLW	ANGL	HS
88	86	30	29	42	8	62	18	23	60	90	34	11	16	7	63	56	4	84	25	16	11

B 6 | Biltmore Wildcat 161K

DOB: 09-17-2022 Bull *20574571 Tattoo: 161K
 +*GAR Discovery 6737H #*V A R Discovery 2240
 *E & B WILDCAT 9402 *G A R Ingenuity 3132
 19810163 E&B Ladv Plus 643 #*Connealy Confidence Plus

+*Biltmore N Bar Shadow 123A #+E&b Lady Credence 190
 BILTMORE ELINE 191E N Bar Shadow X4124
 19141682 Biltmore Eline 32Z #+Sinclair Eriskav 2N1 7883
 #*Coleman Reis 904
 Biltmore Eline 23U

\$AxH	+166	20%	\$AxJ	+144	25%											
CED	BW	WW	YW	SC	DOC	HP	MILK	CEM	\$EN	HS						
+8	+2.2	+73	+125	+44	+22	+13.3	+22	+10	-12	+48						
40%	75%	30%	35%	80%	40%	40%	80%	35%	40%	45%						
CLAW	ANGLE	CW	MARB	RE	FAT	\$M	\$W	\$B	\$C							
+6.2	+4.3	+5.7	+1.06	+7.7	+0.13	+7.3	+6.6	+1.81	+3.08							
95%	25%	40%	20%	40%	45%	30%	40%	20%	15%							

Dam's Production	Avg. Calving Interval	443	Avg. Act. BW	4-74	BWR	4-100	WWR	4-95	YWR	3-97											
CED	BW	WW	YW	DMI	YH	SC	DOC	HP	CEM	MLK	MW	MH	CW	MRB	RE	FAT	TND	PAP	CLW	ANGL	HS
44	76	16	34	41	28	76	30	30	28	78	46	25	18	9	54	84	28	82	95	24	44



Lot 6 - Biltmore Wildcat 161K

- 161K is another attractively-made Wildcat son. He can make and impact on the calf crop with above average growth and carcass merit. These older bulls in the offering will allow you to get more cows covered in one season. All of his \$Values are in the top 35% of the breed or better.
- Top 35% or better for WW, YW, Radg, DMI, YH, CEM, MH, Angle, Marb, Dairy Indexes, \$M, \$F, \$G, \$B and \$C.

2 Year Old Bulls

• 160K comes from a dam who has earned a 105.89 MPPA in the herd. Her calves average 655 pound adj weaning weight on bulls and heifers combined to wean around 44.6% of the dam weight on 9 calves. When you consider the impact a bull can make on your herd, also consider the impact his dam has made on the herd he comes from and you will put him and his maternal brother at Lot 36 on your list. 160K is a heifer safe bull that stands out for CED, BW, Milk, Doc, Angle, HS, and Marb!



Lot 7 - Biltmore Wildcat 160K



Biltmore Wildcat 160K

DOB: 09-17-2022

Bull *20574585 Tattoo: 160K

+*GAR Discovery 6737H
*E & B WILDCAT 9402
19810163 E&B Lady Plus 643

#*V A R Discovery 2240
*G A R Ingenuity 3132
#*Connealy Confidence Plus
#+E&b Lady Credence 190
#+BT Right Time 24J
#N Bar Primrose Y3051
#Basin Rainmaker 814Z
Biltmore Erica 119H



ACT. BW

84

ADJ. 205

661

ADJ. 365

1109

ADJ. %IMF

2.84

ADJ. UREA

9.1

\$AxH +115 50% \$AxJ +56 70%

CED	BW	WW	YW	SC	DOC	HP	MILK	CEM	SEN	HS
+13	+5	+65	+115	+89	+28	+11.9	+28	+8	-27	+34
10%	35%	55%	55%	50%	15%	55%	40%	55%	75%	25%
CLAW	ANGLE	CW	MARB	RE	FAT	\$M	\$W	\$B	\$C	
+53	+43	+42	+1.28	+22	+022	+56	+63	+159	+262	
65%	25%	80%	10%	95%	55%	75%	45%	40%	45%	

Dam's Production Avg. Calving Interval 397 Avg. Act. BW 9-83 BWR 9-108 WWR 9-111 YWR 6-109

CED	BW	WW	YW	DMI	YH	SC	DOC	HP	CEM	MLK	MW	MH	CW	MRB	RE	FAT	TND	PAP	CLW	ANGL	HS
9	32	59	45	31	99	63	15	56	91	37	55	91	72	2	89	53	25	96	71	18	13



Biltmore Wildcat 169K

DOB: 09-19-2022

Bull *20512575 Tattoo: 169K

+*GAR Discovery 6737H
*E & B WILDCAT 9402
19810163 E&B Lady Plus 643

#*V A R Discovery 2240
*G A R Ingenuity 3132
#*Connealy Confidence Plus
#+E&b Lady Credence 190
#Connealy Thunder
#Biltmore Erica 79Y
#*Apex Windy 078
#Biltmore Erica 14K



ACT. BW

91

ADJ. 205

637

ADJ. 365

1103

ADJ. %IMF

2.29

ADJ. UREA

8.9

\$AxH +177 15% \$AxJ +154 20%

CED	BW	WW	YW	SC	DOC	HP	MILK	CEM	SEN	HS
+5	+4.1	+79	+141	+24	+23	+12.8	+25	+9	-39	+24
60%	95%	20%	15%	90%	35%	45%	60%	45%	95%	10%
CLAW	ANGLE	CW	MARB	RE	FAT	\$M	\$W	\$B	\$C	
+36	+39	+68	+96	+98	-011	+61	+60	+194	+313	
10%	15%	20%	25%	20%	20%	60%	55%	10%	10%	

Dam's Production Avg. Calving Interval 362 Avg. Act. BW 3-83 BWR 3-108 WWR 3-106 YWR 3-103

CED	BW	WW	YW	DMI	YH	SC	DOC	HP	CEM	MLK	MW	MH	CW	MRB	RE	FAT	TND	PAP	CLW	ANGL	HS
75	96	21	10	60	46	73	38	26	38	70	11	23	13	27	10	21	23	84	4	10	14



Lot 8 - Biltmore Wildcat 169K

- 169K is a stout-made Wildcat son with added frame who stems from a young female in the herd. His dam, 202G, has earned a 104.57 MPPA in the herd on a 362-day calving interval, weaning calves at 60% of her body weight. He offers great growth, and management traits. He is top 35% for Docility, 10% for Claw, 20% for Angle, and 15% for Hair Shed, while still offering high-ranking carcass values. He is a very complete bull, genetically, that we will want to see calves out of.
- Top 35% or better for WW, YW, Radg, YH, MW, MH, Doc, Claw, Angle, HS, CW, Marb, RE, Fat, Dairy Indexes, \$F, \$G, \$B and \$C!

2 Year Old Bulls

MPPA: MOST PROBABLE PRODUCING ABILITY

This is an estimate of a cow's future productivity for a trait (such as progeny weaning weight ratio) based on her past productivity.

This is a measurement we believe in here at Biltmore and continues to be a part of our selection and culling process.



Lot 9 - Biltmore Sunbeam 189K

B 9 | Biltmore Sunbeam 189K
 DOB: 09-28-2022 Bull #20575884 Tattoo: 189K
 #+*G A R Sunrise #MCC Davbreak
 +*G A R SUNBEAM #+*G A R Objective R227
 18636166 *G A R Inenuity 3132 #+*G A R Inenuity
 #+*G A R 28 Ambush N340
 Biltmore Thunder 178D #Connealy Thunder
 BILTMORE ELINE 189G #Biltmore Erica 79Y
 19855048 Biltmore Eline 6B +*Biltmore Rainmaker 180Y
 Biltmore Eline 62N

\$AxH	+124	45%	\$AxJ	+104	45%	SC	DOC	HP	MILK	CEM	SEN	HS
CED	-1	+3.4	+76	+132	+99	+14	+13.5	+33	+2	-20	+29	
95%	90%	25%	25%	45%	75%	40%	75%	95%	60%	15%		
CLAW	ANGLE	CW	MARB	RE	FAT	\$M	\$W	\$B	\$C			
+42	+42	+57	+94	+76	-016	+73	+74	+160	+281			
25%	20%	40%	30%	40%	20%	30%	20%	35%	30%			

Dam's Production	Avg. Calving Interval	361	Avg. Act. BW	3-80	BWR	3-109	WWR	3-110	YWR	2-113											
CED	BW	WW	YW	DMI	YH	SC	DOC	HP	CEM	MLK	MW	MH	CW	MARB	RE	FAT	TND	PAP	CLW	ANGL	HS
88	86	12	8	99	30	25	79	25	83	11	23	26	26	34	27	14	22	13	20	24	17

• This Sunbeam son is a standout as he walks around with front pasture presence. He has the muscle, shape and design that everyone loves in a herd bull. He will be easy to find on sale day. His dam has three progeny in the herd, and on her way to a fourth. She has an MPPA of 104.4 on a 361-day calving interval, weaning 58.64% of her body weight. You will appreciate this bull's management traits along with his growth, fertility, and carcass values.

B 10 | Biltmore Safe Deposit K410
 DOB: 10-22-2022 Bull #+20514147 Tattoo: K410
 #+*Basin Deposit 6249 #*Basin Advance 3134
 +*BASIN SAFE DEPOSIT 9324 #+*Basin Lucy 4288
 19461028 #*Basin Joy 2006 #*Summitcrest Complete 1P55
 #*Bar R Jet Black 5063 Basin Joy 566T
 #*HR FANNY 8653 #*Connealy Black Granite
 19246207 #*SJV Quannah of 9360 4732 Bar R Iris Anita 0113
 #*G A R Quannah 687L
 #*2 Bar Mile High 9360

\$AxH	+212	5%	\$AxJ	+207	5%	SC	DOC	HP	MILK	CEM	SEN	HS
CED	+15	-2.1	+68	+123	+85	+30	+12.4	+37	+17	-16	+20	
3%	4%	45%	40%	55%	10%	50%	4%	7%	50%	10%		
CLAW	ANGLE	CW	MARB	RE	FAT	\$M	\$W	\$B	\$C			
+34	+39	+56	+1.02	+1.18	-033	+89	+81	+191	+337			
5%	15%	45%	25%	5%	10%	5%	10%	10%	4%			

Dam's Production	Avg. Calving Interval	619	Avg. Act. BW	57-79	BWR	2-103	WWR	1-97	YWR	1-103											
CED	BW	WW	YW	DMI	YH	SC	DOC	HP	CEM	MLK	MW	MH	CW	MARB	RE	FAT	TND	PAP	CLW	ANGL	HS
1	1	75	69	12	93	68	1	48	12	12	90	84	68	16	3	7	87	74	3	10	4

• I expect this moderate-framed Safe Deposit son to make a fancy set of replacement heifers that will never leave the front pasture. He has the shape and natural thickness we all want to see in a herd bull and should have the ability to transmit that to his calves. He is a heifer bull deluxe, possessing a top 3% CED and 4% BW EPD. He does not sacrifice other important traits such as growth, CEM, Milk, and has excellent marks for Doc, Claw, Angle, HS, Marb and RE! Top 10% for \$M, \$W, \$G and \$C!



Zach Moffitt Cattle Marketing and Consulting
 zmoftitt19@gmail.com • zmoftittcattlemarketing.com • 336.736.6340

Welcome back to the Biltmore Livestock Production Sale. What a great honor to be part of such a Historical Agriculture Enterprise. As we were preparing for the sale and working cattle for photos, I couldn't help but think of all the generations of Family, Friends and Employees who have worked at Biltmore. What would they say if they could see it now? What would we say if we could have seen it then? I encourage you to set up a visit and tour the farm with the staff and take the opportunity to visit the rich history of Agriculture Production that the Biltmore Team is still very passionate about today!

The Livestock Team here is very passionate about production, transparency, accuracy, and a great consumer experience. Check out www.biltmorelivestock.com to keep up with information about the sale and for future events and opportunities to visit and do business here in Asheville.

The cattle market has high demand right now and the desire for Angus Cattle and Angus Beef is at an all-time high. I encourage you to start studying your herds and knowing what you need in a herd bull; then, call the team and they will help you sort through the bulls and make notes ahead of the sale to find what you are looking for. We will have a solid offering of 2-Year-Old, 18-Month-Old, and Yearling Bulls. Kyle, Eric, and the Team have worked diligently to provide bulls that will sire calves that will perform to weaning, yearling, as replacement heifers, and on the rail. We know that many of you are raising your own beef and providing a great protein product to your customers. I feel there is a deep offering of bulls that will sire calves with incredible carcass value for a second to none eating experience.

We also have an outstanding set of females to offer. Biltmore will be offering half interest in one of its top Donors at Lot 42, who is an outstanding Wildcat daughter, along with Donor Prospects, Bred Heifers, Spring and Fall Pairs. Feel free to call with any questions you may have ahead of time or to make a visit ahead of the sale. The Team and I are happy to assist. We look forward to seeing you soon!

Sincerely,
 Zach Moffitt

18 Month Old Bulls

- This Wildcat son is long and athletically made. This is a bull that will inject a huge shot of carcass value into a calf crop. We all know how important end product merit has become when selling feeder calves, selling beef, or retaining ownership in their calf crop to the rail. 83L will make a huge impact in those regards. He also offers great growth, frame, fertility, milk, Docility, and Hair Shed. His dam has a 99.43 MPPA with a 366-day calving interval and weaning 61.5% of her body weight! His dam sells at Lot 49 and a maternal sister at Lot 49A!
- Top 35% or better for WW, YW, Radg, YH, HP, Milk, MW, MH, Doc, HS, CW, Marb, RE, Dairy Indexes, \$W, \$F, \$G, \$B and \$C!



Lot 11 - Biltmore Wildcat 83L

B 11 | Biltmore Wildcat 83L

DOB: 02-20-2023 Bull *20648969 Tattoo: 83L
 +*GAR Discovery 6737H
 *E & B WILDCAT 9402
 19810163 E&B Lady Plus 643

#+*GAR Sure Fire
 *BILTMORE ERICA 12H
 19843772 *Biltmore Erica 83F

\$AxH	+248	1%	\$AxJ	+254	1%										
CED	BW	WW	YW	SC	DOC	HP	MILK	CEM	\$EN	HS	ADJ. %IMF	ADJ. UREA			
+8	+3.1	+87	+157	+1.09	+24	+13.9	+28	+4	-36	+16	2.50	11.5			
40%	90%	10%	4%	40%	30%	35%	40%	90%	90%	5%					
CLAW	ANGLE	CW	MARB	RE	FAT	\$M	\$W	\$B	\$C						
+56	+52	+84	+1.40	+1.21	+0.32	+63	+75	+238	+372						
75%	70%	3%	10%	5%	70%	55%	20%	1%	1%						

Dam's Production	Avg. Calving Interval	366	Avg. Act. BW	3-66	BWR	3-91	WWR	2-98	YWYR	1-100											
CED	BW	WW	YW	DMI	YH	SC	DOC	HP	CEM	MLK	MW	MH	CW	MRB	RE	FAT	TND	PAP	CLW	ANGL	HS
64	95	12	3	61	13	34	27	21	95	37	22	16	3	2	6	70	82	69	72	77	5

B 13 | Biltmore Wildcat 26L

DOB: 01-31-2023 Bull *20649751 Tattoo: 26L
 +*GAR Discovery 6737H
 *E & B WILDCAT 9402
 19810163 E&B Lady Plus 643

#*Connealy Consensus 7229
 EXAR LUCY 3056
 17462665 EXAR Lucy 1061

\$AxH	+112	50%	\$AxJ	+74	65%										
CED	BW	WW	YW	SC	DOC	HP	MILK	CEM	\$EN	HS	ADJ. %IMF	ADJ. UREA			
+12	-1	+70	+125	+6.7	+26	+16.7	+27	+9	-11	+51	2.87	10.1			
70%	25%	40%	35%	65%	20%	70%	45%	35%	50%						
CLAW	ANGLE	CW	MARB	RE	FAT	\$M	\$W	\$B	\$C						
+49	+41	+54	+1.33	+2.3	+0.22	+90	+73	+179	+322						
50%	20%	50%	10%	95%	55%	4%	20%	20%	10%						

Dam's Production	Avg. Calving Interval	474	Avg. Act. BW	51-75	BWR	3-105	WWR	3-96	YWYR	2-97											
CED	BW	WW	YW	DMI	YH	SC	DOC	HP	CEM	MLK	MW	MH	CW	MRB	RE	FAT	TND	PAP	CLW	ANGL	HS
14	29	46	23	58	56	67	20	11	59	49	71	73	37	3	90	53	25	40	24	6	45

- 26L is a flush brother to Lot 12 who offers double-digit calving ease with low birth and high growth. He ranks very high for Maternal Values putting him in the top 4% for \$M. He also puts together a balanced set of management traits with top 10% Marbling! This is a very complete bull that will make great impact on each calf crop!
- Top 35% or better for CED, BW, YW, Radg, DMI, HP, Doc, Angle, Marb, \$M, \$W, \$F, \$G, \$B and \$C!

B 12 | Biltmore Wildcat 35L

DOB: 02-04-2023 Bull *20649752 Tattoo: 35L
 +*GAR Discovery 6737H
 *E & B WILDCAT 9402
 19810163 E&B Lady Plus 643

#*Connealy Consensus 7229
 EXAR LUCY 3056
 17462665 EXAR Lucy 1061

\$AxH	+137	35%	\$AxJ	+141	30%										
CED	BW	WW	YW	SC	DOC	HP	MILK	CEM	\$EN	HS	ADJ. %IMF	ADJ. UREA			
+11	+8	+81	+150	+1.16	+17	+16.0	+34	+10	-39	+33	3.48	11.7			
15%	40%	15%	10%	35%	65%	15%	10%	35%	95%	20%					
CLAW	ANGLE	CW	MARB	RE	FAT	\$M	\$W	\$B	\$C						
+50	+45	+70	+91	+76	+0	+67	+80	+188	+311						
55%	35%	15%	55%	40%	30%	45%	10%	15%	15%						

Dam's Production	Avg. Calving Interval	474	Avg. Act. BW	51-75	BWR	3-105	WWR	3-96	YWYR	2-97											
CED	BW	WW	YW	DMI	YH	SC	DOC	HP	CEM	MLK	MW	MH	CW	MRB	RE	FAT	TND	PAP	CLW	ANGL	HS
29	44	19	4	86	9	22	59	10	33	18	19	16	18	14	48	40	16	42	41	22	28

- 35L is a son of the great Lucy 3056 donor! He is a well-made son of Genex Roster Member, E&B Wildcat, with great calving ease and low BW. His spread from BW to YW is impressive and he possesses great marks for SC, HP, CEM, Milk, Angle, HS, CW, Marb, RE, Fat, \$M, \$W, \$F, \$G and \$C. A very well-rounded bull that can make huge impact on a calf crop. He is in the top 35% or better for 25 EPDs and Indexes!



Lot 13 - Biltmore Wildcat 26L

18 Month Old Bulls

B 14 | Biltmore Wildcat 53L

DOB: 02-08-2023 Bull *20648987 Tattoo: 53L
 +*GAR Discovery 6737H #*V A R Discovery 2240
 #*E & B WILDCAT 9402 #*G A R Ingenuity 3132
 19810163 E&B Lady Plus 643 #*Connealy Confidence Plus
 #+E&B Lady Credence 190



ACT. BW	98
ADJ. 205	620
ADJ. 365	1033
ADJ. %IMF	3.18
ADJ. UREA	10.7

Biltmore Thunder 178D
 #BILTMORE DIXIE ERICA 45F
 19242391 +*Biltmore Dixie Erica 129B

\$AxH	+72	75%	\$AxJ	+56	70%						
CED	+6	+2.9	+73	+135	+81	+6	+12.2	+24	+6	-30	+22
	55%	85%	30%	20%	55%	95%	55%	70%	75%	85%	10%
CLAW	ANGLE	CW	MARB	RE	FAT	\$M	\$W	\$B	\$C		
+39	+44	+57	+90	+52	+0.11	+51	+58	+168	+269		
	15%	30%	40%	30%	70%	45%	85%	60%	30%	40%	

Dam's Production Avg. Calving Interval 353 Avg. Act. BW 4-85 BWR 4-114 WWR 4-102 YWR 1-106

CED	BW	WW	YW	DMI	YH	SC	DOC	HP	CEM	MLK	MW	MH	CW	MRB	RE	FAT	TND	PAP	CLW	ANGL	HS
71	88	26	8	65	11	37	95	58	58	79	27	15	21	27	53	31	44	68	18	24	8

• 53L is another Wildcat son that stems from a Biltmore Thunder daughter who has a 102.55 MPPA and a 353 calving interval on 5 calves. He will work great on a set of mature cows as he will offer added growth, above average management traits and balanced carcass traits.



LOT 14

Lot 14 - Biltmore Wildcat 53L

B 15 | Biltmore Wildcat 29L

DOB: 02-03-2023 Bull *20647672 Tattoo: 29L
 +*GAR Discovery 6737H #*V A R Discovery 2240
 #*E & B WILDCAT 9402 #*G A R Ingenuity 3132
 19810163 E&B Lady Plus 643 #*Connealy Confidence Plus
 #+E&B Lady Credence 190



ACT. BW	74
ADJ. 205	577
ADJ. 365	929
ADJ. %IMF	1.87
ADJ. UREA	11.1

#*Connealy Capitalist 028
 #*BILTMORE TEMPEST 15F
 19242403 Biltmore Tempest 113W

\$AxH	+149	30%	\$AxJ	+143	25%						
CED	+12	-4	+71	+120	-.42	+11	+16.6	+26	+9	-5	+28
	10%	20%	35%	45%	95%	85%	10%	55%	45%	25%	15%
CLAW	ANGLE	CW	MARB	RE	FAT	\$M	\$W	\$B	\$C		
+42	+40	+59	+53	+95	-.011	+92	+76	+156	+294		
	25%	15%	35%	70%	20%	20%	3%	15%	40%	20%	

Dam's Production Avg. Calving Interval 361 Avg. Act. BW 5-71 BWR 5-93 WWR 4-106 YWR 1-95

CED	BW	WW	YW	DMI	YH	SC	DOC	HP	CEM	MLK	MW	MH	CW	MRB	RE	FAT	TND	PAP	CLW	ANGL	HS
33	47	42	49	57	73	98	76	5	74	42	82	79	46	64	24	34	32	72	20	9	14

• 29L is another calving-ease option in the offering with good growth and maternal values. He is in the top 20% for both foot EPDs and Hair Shed. His dam is a Capitalist daughter who has earned a 105.82 MPPA with a 361-day Calving Interval and weaning calves at 54.8% of her body weight. He will be a great option for heifers, keeping heifers, and selling stout-made feeder calves.

• Top 35% or better for CED, BW, HP, \$EN, Claw, Angle, HS, CW, RE, Fat, Dairy Indexes, \$M, \$W, \$F, and \$C!



LOT 15

Lot 15 - Biltmore Wildcat 29L

B 16 | Biltmore Rawhide 10L

DOB: 01-27-2023 Bull *20648719 Tattoo: 10L
 #*Poss Maverick #+*Basin Payweight 1682
 #*POSS RAWHIDE Poss Pride 5163
 19416968 #*Poss Blueblood 6502 Poss Easy Impact 0119
 #*SvdGen Enhance #*SvdGen Exceed 3223
 #*BILTMORE LUCY 32J SvdGen Rita 2618
 20252298 #Basin Rainmaker P175
 #Basin Lucy 3150 #*Basin Lucy 1667



ACT. BW	61
ADJ. 205	705
ADJ. 365	1057
ADJ. %IMF	3.73
ADJ. UREA	12.2

\$AxH	+243	2%	\$AxJ	+238	2%						
CED	+9	+5	+93	+161	+1.15	+27	+7.8	+18	+8	-41	+71
	30%	35%	2%	3%	35%	15%	90%	95%	55%	95%	85%
CLAW	ANGLE	CW	MARB	RE	FAT	\$M	\$W	\$B	\$C		
+45	+53	+78	+1.28	+1.11	+0.68	+47	+78	+215	+326		
	35%	75%	5%	10%	10%	95%	90%	15%	3%	10%	

Dam's Production Avg. Calving Interval 386 Avg. Act. BW 2-64 BWR 2-87 WWR 1-113 YWR 1-108

CED	BW	WW	YW	DMI	YH	SC	DOC	HP	CEM	MLK	MW	MH	CW	MRB	RE	FAT	TND	PAP	CLW	ANGL	HS
53	57	18	8	61	83	32	37	87	62	95	15	56	11	12	6	80	11	60	39	66	73

• 10L is a calving-ease bull that has an incredible spread from a .5 BW to a 160 YW EPD. He has great Docility also; if you get a chance, ask Reagan Mayberry about it as he was her favorite bull during development. This is another bull in the offering that has great phenotype and presence. He will also strike hard on carcass figures for those of you needing an added dose of end product merit in your programs. His dam, 32J, has earned a 105.2 MPPA on a 386-day calving interval, stemming from the Great Basin Lucy Cow Family!



LOT 16

Lot 16 - Biltmore Rawhide 10L

18 Month Old Bulls



Lot 17 - Biltmore Top Cut 31L

B 17 | Biltmore Top Cut 31L

DOB: 02-03-2023
 Bull *20648846
 #*Spring Cove Reno 4021
 #*YON TOP CUT G730
 19476453 +*Yon Sarah D668

Tattoo: 31L
 #*KM Broken Bow 002
 *Spring Cove Liza 021
 #*V A R Discovery 2240
 +*Yon Sarah A615
 #*Basin Excitement
 #+Pride of Ellston K68
 #Connealy Thunder
 Biltmore Erica 1T

ANGUS 6S

ACT. BW 75
 ADJ. 205 648
 ADJ. 365 963
 ADJ. %IMF 3.58
 ADJ. UREA 10.1

#*Hoover Elation M123
 *BILTMORE ERICA 58F
 19242385 #Biltmore Erica 177D

\$AxH	+144	30%	\$AxJ	+116	40%																
CE	+9	BW	+6	WW	+78	YW	+130	SC	+39	DOC	+27	HP	+16.8	MILK	+21	CEM	+12	SEN	-11	HS	+22
	30%		35%		20%		30%		85%		15%		10%		85%		15%		35%		10%
CLAW	ANGLE	CW	MARB	RE	FAT	\$M	\$W	\$B	\$C												
+5.9	+5.7	+42	+1.20	+4.9	+0.24	+85	+76	+147	+276												
85%	90%	80%	15%	75%	60%	10%	15%	55%	35%												

Dam's Production	Avg. Calving Interval	364	Avg. Act. BW	5-72	BWR	5-98	WWR	4-100	YWR	3-102											
CE	BW	WW	YW	DMI	YH	SC	DOC	HP	CEM	MLK	MW	MH	CW	MFB	RE	FAT	TND	PAP	CLW	ANGL	HS
44	30	52	62	61	87	79	10	9	30	81	72	71	88	7	73	64	67	61	91	90	14

• Top Cut has been a well-received sire in the industry. He puts a big dose of maternal value in the calf crop and you will see that in these sons. 31L is a solid bull that comes from a dam that has a 100.55 MPPA and a calving interval of 364 on 5 calves, weaning 47.2% of her body weight. When you study 31L you can appreciate his spread from +.7 BW to +130 YW with high maternal value, docility, hair shed and marbling.



Lot 18 - Biltmore Top Cut 66L

B 18 | Biltmore Top Cut 66L

DOB: 02-11-2023
 Bull *20648849
 #*Spring Cove Reno 4021
 #*YON TOP CUT G730
 19476453 +*Yon Sarah D668

Tattoo: 66L
 #*KM Broken Bow 002
 *Spring Cove Liza 021
 #*V A R Discovery 2240
 +*Yon Sarah A615
 #+GDAR Game Day 449
 #S Pride Anna 709
 #Connealy Thunder
 Biltmore Erica 71S

ANGUS 6S

ACT. BW 82
 ADJ. 205 621
 ADJ. 365 1023
 ADJ. %IMF 3.22
 ADJ. UREA 11.4

#*S Summit 956
 BILTMORE ERICA 38D
 18519189 Biltmore Erica 29B

\$AxH	+135	35%	\$AxJ	+124	35%																
CE	+7	BW	+1.9	WW	+84	YW	+136	SC	+2.07	DOC	+29	HP	+19.8	MILK	+27	CEM	+7	SEN	-13	HS	+30
	45%		65%		10%		20%		2%		10%		2%		45%		65%		40%		20%
CLAW	ANGLE	CW	MARB	RE	FAT	\$M	\$W	\$B	\$C												
+4.7	+4.2	+47	+1.71	+6.6	-.021	+107	+86	+138	+286												
40%	20%	65%	50%	55%	15%	1%	3%	65%	25%												

Dam's Production	Avg. Calving Interval	363	Avg. Act. BW	6-72	BWR	6-97	WWR	5-100	YWR	2-99											
CE	BW	WW	YW	DMI	YH	SC	DOC	HP	CEM	MLK	MW	MH	CW	MFB	RE	FAT	TND	PAP	CLW	ANGL	HS
65	68	28	55	45	72	4	5	1	62	54	78	71	74	49	40	35	62	79	24	21	15

• 66L is a Top Cut son who comes from a dam who has a 363-day calving interval on 7 calves, weaning 46.1% of her body weight earning a 100.46 MPPA. He has an EPD profile that offers added growth, high-ranking fertility numbers, well-balanced management and carcass traits with a +106 \$M! Plan on keeping replacement heifers out of him if you need them.



Lot 19 - Biltmore Top Cut 55L

B 19 | Biltmore Top Cut 55L

DOB: 02-08-2023
 Bull *20648848
 #*Spring Cove Reno 4021
 #*YON TOP CUT G730
 19476453 +*Yon Sarah D668

Tattoo: 55L
 #*KM Broken Bow 002
 *Spring Cove Liza 021
 #*V A R Discovery 2240
 +*Yon Sarah A615
 #Baldridae Kaboom K243 KCF
 #Parka of Conanaq 241
 Biltmore Emblazon 44P
 Biltmore Erica 10N

ANGUS 6S

ACT. BW 97
 ADJ. 205 705
 ADJ. 365 1043
 ADJ. %IMF 2.82
 ADJ. UREA 11.8

#Connealy Thunder
 #BILTMORE ERICA 177D
 18520629 Biltmore Erica 1T

\$AxH	+126	45%	\$AxJ	+89	55%																
CE	+0	BW	+2.5	WW	+73	YW	+122	SC	+84	DOC	+23	HP	+15.9	MILK	+21	CEM	+8	SEN	-1	HS	+17
	90%		80%		30%		40%		55%		35%		15%		85%		55%		15%		10%
CLAW	ANGLE	CW	MARB	RE	FAT	\$M	\$W	\$B	\$C												
+3.9	+3.8	+38	+1.15	+6.0	-.026	+96	+69	+143	+281												
15%	10%	85%	15%	60%	10%	2%	30%	60%	30%												

Dam's Production	Avg. Calving Interval	369	Avg. Act. BW	7-79	BWR	7-106	WWR	6-106	YWR	3-107											
CE	BW	WW	YW	DMI	YH	SC	DOC	HP	CEM	MLK	MW	MH	CW	MFB	RE	FAT	TND	PAP	CLW	ANGL	HS
93	86	32	54	90	88	50	42	13	48	79	82	89	68	7	76	46	12	47	5	9	3

• 55L is another high-ranking \$M son of Yon Top Cut. You will love his management traits ranking 35% for Docility, 15% for Claw and Angle, and 10% for Hair Shed. He also has the growth and carcass traits you need to put added value in the calf crop. His dam, 177D, has an MPPA of 105.07, 369-day calving interval on 7 calves and weaning 51.9% of her body weight. He is a multipurpose bull that should sire calves that wean with added pounds, heifers that will make the replacement pen, and calves that grade well on the rail!

• Top 35% or better for WW, HP, SEN, Doc, Claw, Angle, HS, Marb, Fat, \$AxH, \$M, \$W, \$G, and \$C.

18 Month Old Bulls

B 20 | Biltmore Ultra Provider 19L

DOB: 01-29-2023 Bull +*20648710 Tattoo: 19L
 +*G A R Momentum K836 #*G A R Momentum
 +*Chair Rock Sure Fire 4060 +*Chair Rock Sure Fire 4060
 +*G A R Progress #+*G A R Progress
 +Chair Rock 5050 G A R 9057 #+*EXAR Stud 46588
 #*EXAR Stud 46588
 *EXAR Blackcap 3385
 #*Connealy Consensus 7229
 EXAR Lucy 1061



ACT. BW	81
ADJ. 205	615
ADJ. 365	972
ADJ. %IMF	2.66
ADJ. UREA	10.7

\$AxH	+97	60%	\$AxJ	+60	70%						
CED	+12	+2.1	+64	+114	+1.63	+13	+8.8	+27	+10	-17	+15
10%	70%	55%	55%	10%	80%	85%	45%	35%	55%	5%	
CLAW	+68	+5.0	+47	+1.14	+4.1	-0.03	+47	+60	+166	+262	
95%	60%	65%	15%	85%	30%	90%	55%	30%	45%		

Dam's Production Avg. Calving Interval Avg. Act. BW 19-76 BWR 1-101 WWR YWR

CED	BW	WW	YW	DMI	YH	SC	DOC	HP	CEM	MLK	MW	MH	CW	MRB	RE	FAT	TND	PAP	CLW	ANGL	HS
10	47	71	55	61	42	9	69	86	64	43	61	45	64	23	83	34	18	33	96	42	9

• 19L is a maternal brother to Lots 1 & 2 as well as our donor, Biltmore Lucy 148J. We do believe in the Lucy Cow Family as they have been very dependable here at Biltmore. He offers double-digit calving ease with moderate BW and adequate Growth and Marbling. He is a well-muscled and athletic-made Ultra Provider son and should sire calves that will be well received at the market!



Lot 20 - Biltmore Ultra Provider 19L

B 21 | Biltmore Sunbeam 36L

DOB: 02-04-2023 Bull +*20648785 Tattoo: 36L
 #+*G A R Sunrise #MCC Daybreak
 +*G A R SUNBEAM +*G A R Objective R227
 18636166 #G A R Inaenuity 3132 +*G A R Inaenuity
 #G A R 28 Ambush N340
 #SvdGen Enhance
 *S S Enforcer E812 #S S Miss Daybreak K011 3K17
 +*INGRAM RITA 0510 #+*Basin Payweight 1682
 19844039 #Crazy K Rita 6466 +*Crazy K Rita 5021



ACT. BW	81
ADJ. 205	451
ADJ. 365	843
ADJ. %IMF	3.87
ADJ. UREA	12.7

\$AxH	+206	10%	\$AxJ	+204	10%						
CED	+11	+7	+76	+139	+1.24	+11	+12.8	+27	+6	-17	+30
15%	40%	25%	20%	30%	85%	45%	45%	75%	55%	20%	
CLAW	+43	+4.7	+55	+1.23	+1.41	-0.33	+72	+75	+191	+320	
25%	45%	45%	15%	1%	10%	30%	20%	10%	10%		

Dam's Production Avg. Calving Interval 325 Avg. Act. BW 8-73 BWR 2-92 WWR 1-100 YWR 1-100

CED	BW	WW	YW	DMI	YH	SC	DOC	HP	CEM	MLK	MW	MH	CW	MRB	RE	FAT	TND	PAP	CLW	ANGL	HS
3	7	66	40	88	85	19	84	46	78	58	78	71	51	12	4	11	95	52	39	46	4

• 36L is a out of our donor, Ingrams Rita 0510. This Sunbeam flush produced some very attractive females and one of them will sell at Lot 54 in the sale. He is a bull that will work well on heifers and has a great spread from a +.6 BW to a +139 YW EPD. He ranks high on fertility, with balanced management traits and excellent carcass values with a top 15% Marbling and a top 1% RE. He is a multi-trait bull that will add value to your herd!
 • Top 35% or better for CED, BW, WW, YW, Radg, SC, Claw, HS, Marb, RE, Fat, Dairy Indexes, \$M, \$W, \$G, \$B and \$C!



Lot 21 - Biltmore Sunbeam 36L

B 22 | Biltmore Quantum Leap 3L

DOB: 01-25-2023 Bull #*20648676 Tattoo: 3L
 +*G A R Quantum #*G A R Momentum
 +*G A R QUANTUM LEAP +*G A R In Sure 1524
 19568666 Chair Rock Sure Fire 6090 #+*G A R Sure Fire
 +Chair Rock Ambush 3088
 #Connealy Thunder
 #+*Coleman Donna 040
 #*Hoover Elation M123
 Biltmore Prides Lass 4D



ACT. BW	63
ADJ. 205	625
ADJ. 365	1009
ADJ. %IMF	2.66
ADJ. UREA	10.7

\$AxH	+137	35%	\$AxJ	+128	35%						
CED	+11	-3	+62	+118	-.50	+25	+19.5	+37	+10	-22	+45
15%	20%	65%	50%	95%	25%	2%	4%	35%	65%	40%	
CLAW	+46	+5.2	+46	+9.7	+7.9	+0.77	+81	+69	+146	+270	
35%	70%	70%	25%	35%	95%	15%	30%	55%	40%		

Dam's Production Avg. Calving Interval 359 Avg. Act. BW 1-63 BWR 1-88 WWR 1-100 YWR 1-103

CED	BW	WW	YW	DMI	YH	SC	DOC	HP	CEM	MLK	MW	MH	CW	MRB	RE	FAT	TND	PAP	CLW	ANGL	HS
24	28	77	32	95	68	99	39	1	59	10	56	55	68	22	42	97	39	20	25	70	35

• This Quantum Leap son puts together a genetic package that offers calving ease, top 1% HP, 3% Milk, strong management traits, with solid Marbling and RE EPD. His dam has an MPPA of 103.6 and a 359-day calving interval. He is in the top 15% for \$M and top 30% for \$W. The calves should come easy and grow with plenty of maternal and carcass value.



18 Month Old Bulls



Lot 23 - Biltmore Entice 75L

B 23 | Biltmore Entice 75L

DOB: 02-19-2023 Bull *20722867 Tattoo: 75L

*MOGCK Entice #SvdGen Enhance
 *BILTMORE ENTICE 159H #*MOGCK Erica 2255
 20022106 +*Biltmore Donna 163A #*S Chisum 6175
 #SvdGen Enhance +*Coleman Donna 005
 +*BILTMORE LUCY 16J #*SvdGen Exceed 3223
 20252296 *Basin Lucy 3150 SvdGen Rita 2618
 #Basin Rainmaker P175
 +*Basin Lucy 1667

ANGUS 6S	
ACT. BW	78
ADJ. 205	699
ADJ. 365	1067
ADJ. %IMF	2.86
ADJ. UREA	11.1

\$AxH	+129	40%	\$AxJ	+126	35%																
CE	+0	BW	+3.9	WW	+92	YW	+156	SC	+1.37	DOC	+20	HP	+17.3	MILK	+30	CEM	+1	SEN	-41	HS	+37
90%		95%		3%		4%		20%		50%		10%		25%		95%		95%		25%	
CLAW	ANGLE	CW	MARB	RE	FAT	\$M	\$W	\$B	\$C												
+33	+44	+74	+92	+85	-.003	+75	+81	+185	+315												
4%	30%	10%	30%	30%	30%	25%	10%	15%	10%												

Dam's Production	Avg. Calving Interval	363	Avg. Act. BW	2-70	BWR	2-97	WWR	1-112	YWR	1-109											
CE	BW	WW	YW	DMI	YH	SC	DOC	HP	CEM	MLK	MW	MH	CW	MRB	RE	FAT	TND	PAP	CLW	ANGL	HS
87	92	4	7	86	13	26	67	4	77	45	11	10	3	26	29	32	5	43	4	33	28

• 75L is a high-growth Biltmore Entice son who will be great for a set of mature cows. He also excels for fertility, management traits, with balanced carcass traits and all \$Values in the top 25% or better. His dam has a 105.6 MPPA and a calving interval of 363. He is a very complete bull that should sire calves that will mash the scales at weaning time!
 • Top 35% or better for WW, YW, Radg, YH, SC, HP, Milk, MW, MH, Claw, Angle, HS, CW, Marb, RE, Fat, Dairy Indexes, \$M, \$W, \$F, \$G, \$B, and \$C!



Lot 24 - Biltmore Man In Black 24L

B 24 | Biltmore Man In Black 24L

DOB: 01-31-2023 Bull *20649621 Tattoo: 24L

*Bar R Jet Black 5063 #*Connealy Black Granite
 *LAR MAN IN BLACK Bar R Iris Anita 0113
 19955191 #JMB Maxine TG 2131 #*Sitz Top Game 561X
 #JMB Maxine Deluxe 9034
 #TC Thunder 805 #Connealy Thunder
 #BILTMORE DONNA 2D TC Forever 6123
 18560109 Biltmore Donna 191A +*GDAR Game Day 449
 +*Biltmore Donna 167Y

ANGUS 6S	
ACT. BW	76
ADJ. 205	607
ADJ. 365	921
ADJ. %IMF	1.40
ADJ. UREA	11.3

\$AxH	+79	70%	\$AxJ	+58	70%																
CE	+13	BW	+4	WW	+73	YW	+129	SC	+1.60	DOC	+16	HP	+15.0	MILK	+28	CEM	+12	SEN	-22	HS	+91
10%		35%		30%		30%		15%		70%		25%		40%		15%		65%		95%	
CLAW	ANGLE	CW	MARB	RE	FAT	\$M	\$W	\$B	\$C												
-.32	+34	+60	+.32	+.35	-.020	+82	+73	+136	+258												
3%	3%	35%	90%	90%	55%	15%	20%	70%	50%												

Dam's Production	Avg. Calving Interval	364	Avg. Act. BW	7-65	BWR	7-90	WWR	6-102	YWR	5-104											
CE	BW	WW	YW	DMI	YH	SC	DOC	HP	CEM	MLK	MW	MH	CW	MRB	RE	FAT	TND	PAP	CLW	ANGL	HS
19	54	21	12	76	34	8	58	16	52	39	36	42	7	85	53	48	9	10	2	2	87

• 24L is sired by ABS Roster member, LAR Man In Black. He offers calving ease, high growth, fertility, excellent foot EPDs, and top 15% \$M. He is out of a Thunder daughter that has a 364-day calving interval on 7 calves with an MPPA of 102.53. The Man In Black calves have been fast growing with plenty of muscle. Make sure and give him a good look!



Lot 25 - Biltmore Surpass 54L

B 25 | Biltmore Surpass 54L

DOB: 02-08-2023 Bull *20649785 Tattoo: 54L

*+*TEX Playbook 5437 #+*Basin Pavweight 1682
 +*BJ SURPASS +*Rita 1C43 of 9M26 Complete
 19774516 +*BJ Prophet 5275 #+*G A R Prophet
 #BJ Complete 1165
 #*Werner Flat Top 4136 #*Connealy Black Granite
 *BILTMORE DONNA 40G #+*Werner Lady 0304
 19745609 Biltmore Donna 127E +*Biltmore Final Answer 121A
 Biltmore Donna 191A

ANGUS 6S	
ACT. BW	64
ADJ. 205	540
ADJ. 365	876
ADJ. %IMF	2.00
ADJ. UREA	11.2

\$AxH	+109	55%	\$AxJ	+80	60%																
CE	+11	BW	-.6	WW	+72	YW	+122	SC	+1.08	DOC	+18	HP	+15.1	MILK	+36	CEM	+15	SEN	-12	HS	+24
15%		15%		35%		40%		40%		60%		20%		5%		3%		40%		10%	
CLAW	ANGLE	CW	MARB	RE	FAT	\$M	\$W	\$B	\$C												
-.39	+40	+40	+.62	+.66	-.027	+95	+86	+124	+256												
15%	15%	80%	60%	55%	60%	2%	3%	85%	55%												

Dam's Production	Avg. Calving Interval	362	Avg. Act. BW	4-76	BWR	4-105	WWR	3-100	YWR	1-90											
CE	BW	WW	YW	DMI	YH	SC	DOC	HP	CEM	MLK	MW	MH	CW	MRB	RE	FAT	TND	PAP	CLW	ANGL	HS
17	18	24	45	66	51	13	43	21	25	8	66	55	56	60	47	39	42	47	11	7	22

• 54L is a BJ Surpass son who also stands at ABS. He has made his mark on the breed for calving ease and high maternal value and you will see that on 54L. He has a double-digit Calving Ease, low BW EPD with plenty of spread. You can also appreciate his maternal values and strong management traits with Claw, Angle and Hair Shed being in the top 15% of the breed. He is in the top 2% for \$M and top 3% for \$W! His dam has a 362 Calving Interval while weaning calves at an average of 53.2% of her body weight!

18 Month Old Bulls & Yearling Bulls

26 | Biltmore Surpass 58L

DOB: 02-09-2023 Bull *20649813 Tattoo: 58L
 #+*TEX Playbook 5437 #+*Basin Pavweight 1682
 #+*BJ SURPASS #+*Rita 1C43 of 9M26 Complete
 19774516 #+*BJ Prophet 5275 #+*G A R Prophet



ACT. BW	82
ADJ. 205	664
ADJ. 365	1034
ADJ. %IMF	2.46
ADJ. UREA	11.3

#Connealy Thunder
 BILTMORE BELLE PRIDE 174D
 18520628 Biltmore Belle Pride 21U

\$AxH	+56	80%	\$AxJ	+14	90%							
CE	+11	-8	+58	+108	+92	DOC	+17	+13.1	+31	+9	-9	+64
BW	15%	75%	65%	50%	65%	40%	20%	45%	30%	75%		
CLAW	+45	+42	+38	+53	+43	+0.05	+73	+65	+128	+239		
ANGLE	35%	20%	85%	70%	80%	35%	30%	40%	80%	70%		
CW												
MARB												
RE												
FAT												
\$M												
\$W												
\$B												
\$C												

Dam's Production	Avg. Calving Interval	364	Avg. Act. BW	7-68	BWR	5-99	WWR	5-98	YWR	2-100											
CE	BW	WW	YW	DMI	YH	SC	DOC	HP	CEM	MLK	MW	MH	CW	MRB	RE	FAT	TND	PAP	CLW	ANGL	HS
54	58	23	17	78	44	39	55	38	80	13	32	51	18	71	45	26	54	75	44	36	64

• 58L is another calving-ease and high-ranking maternal son of BJ Surpass out of another Thunder daughter. The Thunder daughters have worked well in our herd. You will appreciate the calves he sires and the heifers should make great replacements.



LOT 26

Lot 26 - Biltmore Surpass 58L

27 | Biltmore Surpass 67L

DOB: 02-11-2023 Bull 20649814 Tattoo: 67L
 #+*TEX Playbook 5437 #+*Basin Pavweight 1682
 #+*BJ SURPASS #+*Rita 1C43 of 9M26 Complete
 19774516 #+*BJ Prophet 5275 #+*G A R Prophet



ACT. BW	97
ADJ. 205	658
ADJ. 365	983
ADJ. %IMF	2.41
ADJ. UREA	10.0

Sinclair Prairie Chief 0G4
 BILTMORE BLUEBLOOD 187A
 17862353 #Biltmore Blueblood 60S

\$AxH	+49	85%	\$AxJ	+49	75%							
CE	-1	+4.1	+93	+154	+30	DOC	+21	+10.6	+27	+11	-34	+78
BW	95%	95%	2%	5%	85%	45%	70%	45%	25%	90%	90%	
CLAW	+40	+38	+76	+21	+62	+0.32	+71	+81	+151	+267		
ANGLE	15%	10%	10%	95%	60%	70%	35%	10%	50%	40%		
CW												
MARB												
RE												
FAT												
\$M												
\$W												
\$B												
\$C												

Dam's Production	Avg. Calving Interval	365	Avg. Act. BW	8-80	BWR	8-108	WWR	8-100	YWR	4-97											
CE	BW	WW	YW	DMI	YH	SC	DOC	HP	CEM	MLK	MW	MH	CW	MRB	RE	FAT	TND	PAP	CLW	ANGL	HS
96	99	1	3	91	7	62	31	44	27	40	7	5	1	95	38	55	36	51	3	10	96

• This Surpass son is more suited for mature cows and should add powerful growth traits. You will appreciate his top 15% Claw and Angle EPD as well. He should offer added carcass weight value and a top 30% \$Maternal Index. His dam has a 101.58 MPPA with a 365-day calving interval on 9 calves.



LOT 27

Lot 27 - Biltmore Surpass 67L

28 | Biltmore/CCC Veracious 207L

DOB: 10-17-2023 Bull #*20839860 Tattoo: 207L
 #*Mill Brae Identified 4031 #*Koupals B&B Identiv
 #+*HPCA VERACIOUS #*Mill Brae Pro Blackcap 1092
 19699322 #+*H P C A Sunrise A246 #+*G A R Sunrise



ACT. BW	109
ADJ. 205	652
ADJ. 365	1143
ADJ. %IMF	4.27
ADJ. UREA	12.3

+*Wilks Reimont 9035
 #+*D&W MISS PLUS 1R07
 20334288 #+*K C F Miss Plus F771

\$AxH	+215	5%	\$AxJ	+243	1%							
CE	+5	+3.7	+95	+169	+89	DOC	+9	+11.1	+26	+6	-45	+74
BW	60%	95%	2%	1%	50%	90%	65%	55%	75%	95%	85%	
CLAW	+52	+56	+81	+1.32	+1.20	+0.20	+47	+77	+222	+335		
ANGLE	60%	85%	4%	10%	5%	55%	90%	15%	2%	4%		
CW												
MARB												
RE												
FAT												
\$M												
\$W												
\$B												
\$C												

Dam's Production	Avg. Calving Interval	367	Avg. Act. BW	7-88	BWR	7-88	WWR	8-110	YWR	5-102											
CE	BW	WW	YW	DMI	YH	SC	DOC	HP	CEM	MLK	MW	MH	CW	MRB	RE	FAT	TND	PAP	CLW	ANGL	HS
66	74	16	10	66	42	62	75	29	56	75	39	47	10	5	1	33	95	48	51	83	72

• 207L is sired by Select Sires Roster Member, HPCA Veracious. These Veracious sons will add Marbling and Ribeye to the calf crop in a quick shot. 207L is out of Miss Plus 1R07, a donor we owned in partnership with Chapman Cattle Company we unfortunately lost too soon. He will be great for mature cows. He has excellent growth traits with WW being in the top 2% and YW being in the top 1% of the breed. When you study his carcass traits, you will see that he should add carcass weight, marbling and ribeye. The calves he sires will be easy to like at weaning, yearling, and for those of you selling a high-quality steak for a great eating experience!
 • Top 15% or better for WW, YW, YH, MW, MH, CW, Marb, RE, Dairy Indexes, \$W, \$F, \$G, \$B, and \$C!

29 | Biltmore Veracious 179L

DOB: 09-25-2023 Bull 20826268 Tattoo: 179L
 #*Mill Brae Identified 4031 #*Koupals B&B Identiv
 #+*HPCA VERACIOUS #*Mill Brae Pro Blackcap 1092
 19699322 #+*H P C A Sunrise A246 #+*G A R Sunrise



ACT. BW	89
ADJ. 205	674
ADJ. 365	1290
ADJ. %IMF	4.20
ADJ. UREA	13.2

#*O C C Juneau 807J
 BILTMORE DORA 28A
 17645017 Biltmore Dora 9M

\$AxH	+192	10%	\$AxJ	+186	10%							
CE	+2	+3.8	+84	+139	+68	-4	+17.5	+23	+0	-34	+17	
BW	85%	95%	10%	20%	65%	95%	10%	75%	95%	90%	10%	
CLAW	+45	+44	+67	+1.22	+1.21	-0.04	+57	+68	+195	+310		
ANGLE	35%	30%	20%	15%	5%	30%	70%	35%	10%	15%		
CW												
MARB												
RE												
FAT												
\$M												
\$W												
\$B												
\$C												

Dam's Production	Avg. Calving Interval	367	Avg. Act. BW	8-81	BWR	8-110	WWR	8-107	YWR	5-102											
CE	BW	WW	YW	DMI	YH	SC	DOC	HP	CEM	MLK	MW	MH	CW	MRB	RE	FAT	TND	PAP	CLW	ANGL	HS
87	90	14	28	91	66	39	99	4	98	74	31	37	27	5	4	9	32	74	43	35	4

• This Veracious son will be a good match for females who have had at least one calf. He should add some power to the program with the growth traits he has to offer. You will also appreciate his balanced foot traits and top 10% HS EPD along with excellent carcass values. His dam has a 105.68 MPPA and a calving interval of 367 on 9 calves.
 • Top 25% or better for WW, YW, HP, MW, MH, HS, CW, Marb, RE, Fat, Dairy Indexes, \$G, \$B and \$C.

Yearling Bulls

B 30 | Biltmore Veracious 174L

DOB: 09-22-2023 Bull 20822629 Tattoo: 174L
 #*Mill Brae Identified 4031 #*Koups B&B Identity
 +*HPCA VERACIOUS *Mill Brae Pro Blackcap 1092
 19699322 +*H P C A Sunrise A246
 #*Apex Windy 078
BILTMORE BLUEBIRD QUEEN 25A
 17616348 #Biltmore Bluebird Queen 31U

\$AXH	+156	25%	\$AXJ	+160	20%					
CED	BW	WW	YW	SC	DOC	HP	MILK	CEM	SEN	HS
+3	+2.6	+80	+127	+1.34	+14	+14.5	+36	+8	-22	+67
75%	80%	15%	35%	25%	75%	30%	5%	55%	65%	80%
CLAW	ANGLE	CW	MARB	RE	FAT	\$M	\$W	\$B	\$C	
-.50	+.53	+60	+1.08	+1.12	-.003	+.76	+.86	+1.70	+296	
55%	75%	35%	20%	10%	30%	20%	3%	25%	20%	

Dam's Production	Avg. Calving Interval	365	Avg. Act. BW	8-73	BWR	8-101	WWR	8-110	YWR	7-107											
CED	BW	WW	YW	DMI	YH	SC	DOC	HP	CEM	MILK	MW	MH	CW	MRB	RE	FAT	TND	PAP	CLW	ANGL	HS
93	94	14	51	83	42	28	30	8	48	7	70	49	39	11	6	20	65	89	43	73	58

This Veracious son offers plenty of growth and the carcass value that you would expect with both Marbling and Ribeye being in the top 20% of the breed or better. \$M, \$W, \$G, \$B and \$C are all in the top 35% or better for the breed. With all that he does right, you will really appreciate the work his dam has been doing. She has an MPPA of 106.21 with a calving interval of 365 on 9 calves while weaning at 46.4% of her body weight. He has a maternal sister selling as Lot 52 sired by E&B Wildcat, leaving you with two chances to introduce the longevity and mothering ability of Biltmore Bluebird Queen 25A into your breeding program!

- Top 35% or better for WW, YW, YH, SC, HP, Milk, MH, Doc, Marb, RE, Fat, Dairy Indexes, \$M, \$W, \$G, \$B and \$C!

B 32 | Biltmore Wildcat L415

DOB: 10-21-2023 Bull +*20796255 Tattoo: L415
 #*GAR Discovery 6737H #*V A R Discovery 2240
 +*E & B WILDCAT 9402 *G A R Ingenuity 3132
 19810163 E&B Lady Plus 643 *Connealy Confidence Plus
 #*E&B Lady Credence 190
 #*Connealy Consensus 7229 Blue Lilly of Conanoa 16
 #*B P F Special Focus 504
 +*Basin Lucy W213

\$AXH	+181	15%	\$AXJ	+175	15%					
CED	BW	WW	YW	SC	DOC	HP	MILK	CEM	SEN	HS
+13	+7	+68	+132	+1.24	+20	+17.4	+28	+6	-23	+20
10%	40%	45%	25%	30%	50%	10%	40%	75%	70%	10%
CLAW	ANGLE	CW	MARB	RE	FAT	\$M	\$W	\$B	\$C	
-.48	+.39	+55	+1.05	+.86	+.007	+.73	+.64	+1.82	+309	
45%	15%	45%	20%	30%	40%	30%	45%	15%	15%	

Dam's Production	Avg. Calving Interval	474	Avg. Act. BW	51-75	BWR	3-105	WWR	3-96	YWR	2-97											
CED	BW	WW	YW	DMI	YH	SC	DOC	HP	CEM	MILK	MW	MH	CW	MRB	RE	FAT	TND	PAP	CLW	ANGL	HS
7	35	66	12	53	46	30	35	5	85	36	65	54	32	16	31	18	69	56	41	7	4

L415 is another heifer safe option with double-digit Calving Ease and low BW EPD. He offers a good spread from a +.7 BW to a +133 YW EPD. He checks the boxes for production, maternal, management and carcass traits. He has 19 EPDs and Indexes in the top 35% of the breed or better!

B 34 | Biltmore Hollywood 140L

DOB: 08-30-2023 Bull +*20827259 Tattoo: 140L
 #*S S Enforcer E812 #SvdGen Enhance
 +*WILLIAMS HOLLYWOOD 700-380 #S S Miss Daybreak K011 3K17
 19850747 +*Powell Erica 7312 #*ECO Lombardi 1512
 #*Williams Pro Erica 255-895
 #*G A R Home Town #*Chair Rock Sure Fire 6095
 +*BILTMORE LUCY 148J *EXAR Stallion 7986
 20267370 *EXAR Lucy 9264 EXAR Lucy 3056

\$AXH	+200	10%	\$AXJ	+206	5%					
CED	BW	WW	YW	SC	DOC	HP	MILK	CEM	SEN	HS
+10	+3	+85	+153	+9.5	+21	+11.3	+25	+13	-25	+09
25%	30%	10%	5%	45%	45%	65%	20%	10%	75%	3%
CLAW	ANGLE	CW	MARB	RE	FAT	\$M	\$W	\$B	\$C	
+.40	+.40	+55	+1.42	+.97	+.009	+.77	+.80	+1.91	+325	
15%	15%	45%	5%	20%	40%	20%	10%	10%	10%	

Dam's Production	Avg. Calving Interval	474	Avg. Act. BW	8-71	BWR	1-91	WWR	1-91	YWR												
CED	BW	WW	YW	DMI	YH	SC	DOC	HP	CEM	MILK	MW	MH	CW	MRB	RE	FAT	TND	PAP	CLW	ANGL	HS
8	10	59	37	45	71	44	12	51	9	64	84	38	67	5	32	51	24	33	21	12	1

L40L will make a good match for his brother at Lot 33 with his calving ease, more explosive growth, outstanding management traits and high-end carcass value. He has what it takes to make a big impact on every calf crop. He has an outstanding set of \$Values that indicate profit in every sector of the cattle business.

- Top 35% or better for CED, BW, WW, YW, Radg, YH, CEM, MH, Doc, Claw, Angle, PAP, HS, Marb, RE, Dairy Indexes, \$M, \$W, \$F, \$G, \$B and \$C!

B 31 | Biltmore Wildcat L413

DOB: 10-18-2023 Bull +*20796253 Tattoo: L413
 #*GAR Discovery 6737H #*V A R Discovery 2240
 +*E & B WILDCAT 9402 *G A R Ingenuity 3132
 19810163 E&B Lady Plus 643 #*Connealy Confidence Plus
 #*E&B Lady Credence 190
 #*Connealy Consensus 7229 Blue Lilly of Conanoa 16
 #*B P F Special Focus 504
 +*Basin Lucy W213

\$AXH	+176	15%	\$AXJ	+154	20%					
CED	BW	WW	YW	SC	DOC	HP	MILK	CEM	SEN	HS
+13	+3	+65	+114	+7.1	+16	+16.5	+32	+12	-2	+44
10%	30%	55%	55%	65%	70%	15%	15%	15%	20%	40%
CLAW	ANGLE	CW	MARB	RE	FAT	\$M	\$W	\$B	\$C	
-.49	+.42	+49	+1.22	+.52	+.013	+.95	+.75	+1.78	+326	
50%	20%	60%	15%	70%	45%	2%	20%	20%	10%	

Dam's Production	Avg. Calving Interval	474	Avg. Act. BW	51-75	BWR	3-105	WWR	3-96	YWR	2-97											
CED	BW	WW	YW	DMI	YH	SC	DOC	HP	CEM	MILK	MW	MH	CW	MRB	RE	FAT	TND	PAP	CLW	ANGL	HS
19	47	48	49	17	40	58	65	3	40	16	85	61	42	5	66	56	22	75	36	6	30

Here is another chance to add the genetics of EXAR Lucy 3056 into your program. L413 is a maternal brother to Lots 2 & 3 and a full brother to Lots 12, 13, and 32. If you're needing multiple bulls for the herd, I highly recommend studying all of these brothers. L413 is a calving-ease specialist with solid growth, excellent maternal value, balanced management traits and high ranking marbling.

- Top 35% or better for CED, BW, DMI, HP, CEM, Milk, \$EN, Angle, Marb, Dairy Indexes, \$M, \$W, \$F, \$G, \$B and \$C!

B 33 | Biltmore Hollywood 147L

DOB: 09-04-2023 Bull +*20827261 Tattoo: 147L
 #*S S Enforcer E812 #SvdGen Enhance
 +*WILLIAMS HOLLYWOOD 700-380 #S S Miss Daybreak K011 3K17
 19850747 +*Powell Erica 7312 #*ECO Lombardi 1512
 #*Williams Pro Erica 255-895
 #*G A R Home Town #*G A R Ashland
 +*BILTMORE LUCY 148J #*Chair Rock Sure Fire 6095
 20267370 *EXAR Lucy 9264 *EXAR Stallion 7986
 EXAR Lucy 3056

\$AXH	+205	10%	\$AXJ	+201	10%					
CED	BW	WW	YW	SC	DOC	HP	MILK	CEM	SEN	HS
+9	+8	+80	+136	+9.0	+4	+13.4	+23	+10	-20	+37
30%	40%	15%	20%	50%	95%	40%	75%	35%	60%	25%
CLAW	ANGLE	CW	MARB	RE	FAT	\$M	\$W	\$B	\$C	
+.49	+.39	+38	+1.77	+.98	-.020	+.69	+.76	+1.87	+312	
50%	15%	85%	1%	20%	15%	40%	15%	15%	10%	

Dam's Production	Avg. Calving Interval	474	Avg. Act. BW	8-71	BWR	1-91	WWR	1-91	YWR												
CED	BW	WW	YW	DMI	YH	SC	DOC	HP	CEM	MILK	MW	MH	CW	MRB	RE	FAT	TND	PAP	CLW	ANGL	HS
8	10	54	68	32	59	62	69	31	43	72	81	53	82	1	21	18	21	16	62	18	16

L47L is a Hollywood son out of one of our lead donors, Biltmore Lucy 148J, along with his brother at Lot 34; you will also get to see highlight daughters in the female offering sired by Winchester and Hollywood. L47L combines calving ease, low birth, growth, high-ranking maternal values, balanced management traits and outstanding carcass value with a marbling EPD of +1.80! He will make an impact on weaned calves, replacement heifers, and produce high-end protein for your beef customers!

- Top 35% or better for CED, WW, YW, YH, CEM, MH, Angle, PAP, HS, Marb, RE, Fat, Dairy Indexes, \$M, \$W, \$G, \$B and \$C!

B 35 | Biltmore Hollywood 166L

DOB: 09-18-2023 Bull 20826606 Tattoo: 166L
 #*S S Enforcer E812 #SvdGen Enhance
 +*WILLIAMS HOLLYWOOD 700-380 #S S Miss Daybreak K011 3K17
 19850747 +*Powell Erica 7312 #*ECO Lombardi 1512
 #*Williams Pro Erica 255-895
 #*Apex Windy 078 #H A R B Windy 702 JH
BILTMORE JESTRESS 15B Apexette Lucy 6037
 17897145 Biltmore Jestress 56P #*O C C Homer 650H
 Biltmore Jestress 35M

\$AXH	+141	35%	\$AXJ	+138	30%					
CED	BW	WW	YW	SC	DOC	HP	MILK	CEM	SEN	HS
+8	+9	+77	+140	+1.64	+7	+12.8	+27	+6	-30	+93
40%	45%	20%	15%	10%	95%	45%	45%	75%	85%	95%
CLAW	ANGLE	CW	MARB	RE	FAT	\$M	\$W	\$B	\$C	
+.43	+.38	+.48	+.79	+.83	-.017	+.60	+.72	+1.48	+252	
25%	10%	65%	40%	30%	15%	65%	25%	55%	55%	

Dam's Production	Avg. Calving Interval	398	Avg. Act. BW	6-72	BWR	6-94	WWR	6-100	YWR	2-104											
CED	BW	WW	YW	DMI	YH	SC	DOC	HP	CEM	MILK	MW	MH	CW	MRB	RE	FAT	TND	PAP	CLW	ANGL	HS
40	43	26	12	93	79	9	83	48	52	59	35	69	46	47	30	34	9	64	44	14	98

L66L is a bull that is very balanced and offers added growth, with excellent fertility, Foot EPD and balanced carcass values. If you are looking to add weaning pounds, he has the genetics to do it.

Yearling Bulls

B 36 | Biltmore Hollywood 170L

DOB: 09-20-2023 Bull #20826609 Tattoo: 170L
 *S S Enforcer E812 #SvdGen Enhance
 +*WILLIAMS HOLLYWOOD 700-380 #S S Miss Davbreak K011 3K17
 19850747 +*Powell Erica 7312 +*ECO Lombardi 1512

ANGUS 55

ACT. BW	96
ADJ. 205	778
ADJ. 365	1276
ADJ. %IMF	4.61
ADJ. UREA	12.6

#*Sinclair Grass Master
 +*BILTMORE ERICA 187Z
 17563518 #Biltmore Erica 14K

\$AxH	+119	45%	\$AxJ	+146	25%	CED	BW	WW	YW	SC	DOC	HP	MILK	CEM	SEN	HS					
+2	+4.2	+89	+155	+1.46	+10	+12.5	+35	+5	-49	+42	85%	95%	4%	5%	20%	90%	50%	10%	80%	95%	35%
CLAW	ANGLE	CW	MARB	RE	FAT	\$M	SW	\$B	\$C	ADJ. %IMF	ADJ. UREA										
+54	+44	+62	+87	+85	-009	+49	+78	+158	+254	4.61	12.6	70%	30%	30%	35%	30%	25%	85%	15%	40%	55%

Dam's Production	Avg. Calving Interval	397	Avg. Act. BW	9-83	BWR	9-108	WWR	9-111	YWR	6-109											
CED	BW	WW	YW	DMI	YH	SC	DOC	HP	CEM	MLK	MW	MH	CW	MRB	RE	FAT	TND	PAP	CLW	ANGL	HS
72	89	11	6	88	15	23	67	43	68	7	16	23	11	28	16	24	49	56	78	45	20

• 170L is a maternal brother to Lot 7 in the two-year-old offering. If you need genetic similarity and want it to be backed up by a good cow, then study up. 187Z has earned an MPPA of 105.89 competing in the top of the Biltmore Herd! He is a high-growth bull with solid fertility traits and balanced carcass values.
 • Top 35% or better for WW, YW, Radg, YH, SC, Milk, MW, MH, CW, RE, Fat, \$AxJ, SW, \$G, and \$B.

B 37 | Biltmore Hollywood 176L

DOB: 09-23-2023 Bull #20826526 Tattoo: 176L
 *S S Enforcer E812 #SvdGen Enhance
 +*WILLIAMS HOLLYWOOD 700-380 #S S Miss Davbreak K011 3K17
 19850747 +*Powell Erica 7312 +*ECO Lombardi 1512

ANGUS 55

ACT. BW	88
ADJ. 205	717
ADJ. 365	1312
ADJ. %IMF	3.34
ADJ. UREA	13.2

#*S S Niagara 229
 +*BILTMORE PRIDES LASS 194H
 20103193 +*Biltmore Prides Lass 171Y

\$AxH	+139	35%	\$AxJ	+156	20%	CED	BW	WW	YW	SC	DOC	HP	MILK	CEM	SEN	HS					
+6	+2.2	+89	+158	+1.13	+26	+13.5	+32	+6	-54	+46	55%	75%	4%	4%	35%	20%	40%	15%	75%	95%	40%
CLAW	ANGLE	CW	MARB	RE	FAT	\$M	SW	\$B	\$C												
+40	+38	+70	+74	+94	+004	+58	+80	+167	+275	13.2	13.2	15%	10%	15%	45%	20%	35%	70%	10%	30%	35%

Dam's Production	Avg. Calving Interval	362	Avg. Act. BW	2-73	BWR	2-95	WWR	2-112	YWR	1-111											
CED	BW	WW	YW	DMI	YH	SC	DOC	HP	CEM	MLK	MW	MH	CW	MRB	RE	FAT	TND	PAP	CLW	ANGL	HS
54	63	9	7	94	12	36	7	21	74	7	5	5	3	49	18	63	3	23	24	14	57

• This high-growth Hollywood son will impact the program with added pounds, excellent management traits and balanced carcass merit. His dam has a MPPA of 102.8 with a 362 calving interval while weaning calves at 48.2% of her body weight.
 • Top 35% or better for WW, YW, Radg, YH, HP, Milk, MW, MH, Doc, Claw, Angle, PAP, CW, RE, Dairy Indexes, \$W, \$F, \$G, \$B, and \$C.

B 38 | Biltmore Fireball 152L

DOB: 09-07-2023 Bull #20827765 Tattoo: 152L
 +*G A R Sure Fire 6404 #*G A R Sure Fire
 *GB FIREBALL 672 +*G A R Complete N281
 18690054 *GB Anticipation 432 *G A R Anticipation
 GB Ambush 269

ANGUS 55

ACT. BW	65
ADJ. 205	612
ADJ. 365	1182
ADJ. %IMF	3.57
ADJ. UREA	13.6

*K C F Bennett Exponential
 *BILTMORE DONNA 183J
 20359357 #*Biltmore Donna 182A

\$AxH	+208	10%	\$AxJ	+193	10%	CED	BW	WW	YW	SC	DOC	HP	MILK	CEM	SEN	HS					
+9	+9	+80	+131	+33	+15	+10.1	+27	+14	-20	+02	30%	45%	15%	30%	85%	70%	75%	45%	5%	60%	1%
CLAW	ANGLE	CW	MARB	RE	FAT	\$M	SW	\$B	\$C												
+42	+40	+69	+1.50	+80	+0.49	+73	+82	+209	+344	3.57	13.6	25%	15%	15%	4%	35%	85%	30%	10%	4%	3%

Dam's Production	Avg. Calving Interval	397	Avg. Act. BW	1-65	BWR	1-89	WWR	1-102	YWR	1-100											
CED	BW	WW	YW	DMI	YH	SC	DOC	HP	CEM	MLK	MW	MH	CW	MRB	RE	FAT	TND	PAP	CLW	ANGL	HS
17	18	19	43	67	28	73	71	67	23	45	32	29	25	3	28	81	86	1	15	7	2

• 152L comes from a first calf heifer that did an outstanding job with her first calf. He has great spread from a +.8 BW to a +131 YW EPD. You will also appreciate his management value with his Claw in the top 25%, Angle 5%, PAP 1% and HS at 1%! He does just what you expect Fireball sons to do with excellent carcass traits that will impact the eating experience of consumers near and far!
 • Top 35% or better for CED, WW, YW, YH, CEM, MH, Claw, Angle, PAP, HS, CW, Marb, Dairy Indexes, \$M, \$W, \$F, \$G, \$B, and \$C!

B 39 | Biltmore Fireball 168L

DOB: 09-19-2023 Bull #20827788 Tattoo: 168L
 +*G A R Sure Fire 6404 #*G A R Sure Fire
 *GB FIREBALL 672 +*G A R Complete N281
 18690054 *GB Anticipation 432 *G A R Anticipation
 GB Ambush 269

ANGUS 55

ACT. BW	80
ADJ. 205	594
ADJ. 365	1151
ADJ. %IMF	3.81
ADJ. UREA	13.2

+*S A V Rainfall 6846
 BILTMORE BLUEBIRD 184H
 20103285 Biltmore Bluebird Queen 25A

\$AxH	+236	2%	\$AxJ	+204	10%	CED	BW	WW	YW	SC	DOC	HP	MILK	CEM	SEN	HS					
+8	+4	+62	+107	+83	+18	+14.9	+23	+12	+3	+20	40%	35%	65%	70%	55%	60%	25%	75%	15%	10%	10%
CLAW	ANGLE	CW	MARB	RE	FAT	\$M	SW	\$B	\$C												
+46	+45	+50	+1.64	+1.11	+0.09	+88	+64	+208	+358	13.2	13.2	35%	35%	60%	2%	10%	40%	5%	45%	5%	2%

Dam's Production	Avg. Calving Interval	334	Avg. Act. BW	2-75	BWR	2-97	WWR	2-103	YWR	1-97											
CED	BW	WW	YW	DMI	YH	SC	DOC	HP	CEM	MLK	MW	MH	CW	MRB	RE	FAT	TND	PAP	CLW	ANGL	HS
54	38	67	69	28	91	23	48	22	37	70	94	95	77	1	9	51	26	31	31	35	9

• 168L is another low BW son of ABS member, GB Fireball 672. He is a balanced bull for production traits, while excelling for maternal, management, and carcass traits. Check out his top 5% \$M value if you are considering keeping females for expansion in this strong cattle market, and you will appreciate his Carcass Profile if you are selling beef by the 1/4's, halves, and wholes or in small packages! He comes from a young dam with an MPPA of 104.8 while weaning 53.8% of her body weight!
 • Top 35% or better for BW, DMI, HP, CEM, \$EN, Claw, PAP, HS, Marb, RE, Dairy Indexes, \$M, \$F, \$G, \$B and \$C.

B 40 | Biltmore Fireball 167L

DOB: 09-19-2023 Bull #20827796 Tattoo: 167L
 +*G A R Sure Fire 6404 #*G A R Sure Fire
 *GB FIREBALL 672 +*G A R Complete N281
 18690054 *GB Anticipation 432 *G A R Anticipation
 GB Ambush 269

ANGUS 55

ACT. BW	94
ADJ. 205	705
ADJ. 365	1286
ADJ. %IMF	4.02
ADJ. UREA	14.1

Biltmore Thunder 178D
 *BILTMORE ERICA 202G
 19855052 +*Biltmore Erica 120A

\$AxH	+206	10%	\$AxJ	+179	15%	CED	BW	WW	YW	SC	DOC	HP	MILK	CEM	SEN	HS					
+4	+2.8	+75	+130	+56	+14	+9.5	+24	+10	-35	+34	70%	85%	25%	30%	75%	80%	70%	35%	90%	25%	5%
CLAW	ANGLE	CW	MARB	RE	FAT	\$M	SW	\$B	\$C												
+44	+50	+69	+1.60	+83	+0.42	+43	+62	+220	+328	4.02	14.1	30%	60%	15%	3%	30%	80%	95%	50%	2%	10%

Dam's Production	Avg. Calving Interval	362	Avg. Act. BW	3-83	BWR	3-108	WWR	3-106	YWR	3-103											
CED	BW	WW	YW	DMI	YH	SC	DOC	HP	CEM	MLK	MW	MH	CW	MRB	RE	FAT	TND	PAP	CLW	ANGL	HS
68	78	32	28	38	41	57	64	70	51	71	17	30	12	2	22	80	82	23	30	75	37

• This Fireball son stems from a dam that has a 104.7 MPPA with a 362-day calving interval while weaning 3 sons at an avg of 60.1% of her body weight. That's the kind of cow we all want in the herd. He is a maternal brother to Lot 8 in the two-year-old offering of the sale. Study him up for growth, hair shed and carcass values. He has the genetics to turn forage into a high-valued protein in every calf he sires.
 • Top 35% or better for WW, YW, Radg, DMI, YH, CEM, MW, MH, Claw, PAP, HS, CW, Marb, RE, Dairy Indexes, \$F, \$G, \$B and \$C.

B 41 | Biltmore Fireball 157L

DOB: 09-12-2023 Bull #20827789 Tattoo: 157L
 +*G A R Sure Fire 6404 #*G A R Sure Fire
 *GB FIREBALL 672 +*G A R Complete N281
 18690054 *GB Anticipation 432 *G A R Anticipation
 GB Ambush 269

ANGUS 55

ACT. BW	81
ADJ. 205	678
ADJ. 365	1339
ADJ. %IMF	4.85
ADJ. UREA	12.1

#*Jindra Acclaim
 *BILTMORE DONNA 164H
 20103172 *Biltmore Donna 140E

\$AxH	+125	45%	\$AxJ	+110	45%	CED	BW	WW	YW	SC	DOC	HP	MILK	CEM	SEN	HS					
+3	+3.1	+87	+153	+93	+12	+8.5	+25	+14	-43	+50	75%	90%	10%	5%	50%	85%	90%	60%	5%	95%	50%
CLAW	ANGLE	CW	MARB	RE	FAT	\$M	SW	\$B	\$C												
+53	+55	+79	+1.26	+73	+0.15	+39	+72	+208	+309	4.85	12.1	65%	85%	5%	10%	45%	50%	95%	25%	5%	15%

Dam's Production	Avg. Calving Interval	336	Avg. Act. BW	2-75	BWR	2-98	WWR	2-111	YWR	1-113											
CED	BW	WW	YW	DMI	YH	SC	DOC	HP	CEM	MLK	MW	MH	CW	MRB	RE	FAT	TND	PAP	CLW	ANGL	HS
92	96	7	6	90	25	33	85	76	15	57	12	40	6	7	40	57	60	3	80	69	58

• 157L is a high-growth Fireball son from a female who has earned a 106 MPPA with a 336-day calving interval on two calves, weaning 44.9% of her body weight. Like his brothers, he will have the growth to produce pounds that you want while increasing the quality of carcass merit in each calf he sires.
 • Top 35% or better for WW, YW, Radg, YH, CEM, MW, MH, PAP, CW, Marb, \$W, \$F, \$G, \$B, and \$C.



Igenity Beef Scores

Powered by Neogen

LOT #	ID	IGENITY MATERNAL INDEX	IGENITY PRODUCTION INDEX	CED	HPR	STAY	ADG	YW	MARB	REA	FAT	TEND	HCW
1	133K	4.9	6.1	7	5	2	8	8	9	7	8	4	10
2	147K	5.65	6.6	8	5	4	7	7	9	7	8	6	8
3	172K	6.05	6.35	9	6	3	6	7	9	6	7	6	8
4	173K	6.8	7.05	6	8	6	10	10	7	7	7	9	10
5	165K	5	5.75	6	5	4	9	8	8	6	7	5	7
6	161K	4.95	5.8	5	7	2	10	10	8	7	7	10	9
7	160K	5.9	5.9	8	6	3	9	9	8	5	7	5	8
8	169K	5.5	6.2	5	6	4	9	8	8	6	7	6	8
9	189K	5	6.25	4	4	4	8	8	9	8	6	7	8
10	K410	7.35	7.15	7	9	5	10	10	7	8	7	10	9
11	83L	5.2	5.85	6	6	3	10	10	7	8	7	6	10
12	35L	6.65	6.45	7	6	5	10	10	7	5	8	6	9
13	26L	6.55	6.55	7	7	4	10	10	9	6	8	7	8
14	53L	6.4	6.65	6	8	5	9	9	9	6	8	8	8
15	29L	5.95	5.9	8	8	2	10	10	7	8	7	8	9
16	10L	6.45	6.5	8	6	3	10	10	9	6	7	5	9
17	31L	5.9	5.65	6	9	5	10	9	6	6	8	4	8
18	66L	5.25	4.7	6	8	1	10	10	6	6	6	5	8
19	55L	5.3	5.6	5	5	5	8	8	7	5	7	7	7
20	19L	5.95	6	7	7	4	7	8	9	5	8	6	7
21	36L	5.85	6.05	9	4	4	9	9	8	7	8	7	7
22	3L	6.8	6.3	9	8	5	9	9	8	6	8	7	7
23	75L	6.8	7.05	5	8	5	9	9	8	6	7	8	9
24	24L	7.3	7.35	8	7	6	10	9	7	7	7	7	10
25	54L	6.5	6.35	6	8	4	8	8	7	6	7	3	8
26	58L	5.75	5.25	6	6	4	6	6	7	5	7	5	5
27	67L	5.2	5.8	5	6	3	8	8	8	6	8	3	9
28	207L	6.2	7	7	6	6	10	10	8	9	6	6	10
29	179L	4.4	5.85	3	5	3	10	10	7	9	6	4	10
30	174L	5.1	5.7	5	6	3	10	10	8	7	6	7	9
31	L413	7.25	6.95	9	8	5	9	9	9	6	7	6	8
32	L415	6.1	6.4	7	7	4	10	9	8	7	7	6	8
33	147L	6.1	7.1	7	5	5	9	8	9	7	8	7	9
34	140L	5.6	6.2	7	5	3	9	8	9	6	8	5	9
35	166L	6.15	6.55	7	6	6	9	8	8	4	8	9	8
36	170L	6.6	7.15	5	8	6	9	9	8	6	7	7	10
37	176L	6.35	7.35	6	7	7	10	10	8	6	7	10	10
38	152L	5.5	5.55	6	6	2	7	8	7	8	7	5	8
39	168L	5.95	6.1	7	7	4	8	8	7	7	7	6	8
40	167L	5.75	5.95	6	7	5	7	7	7	5	7	4	8
41	157L	6.65	6.6	7	6	4	10	10	7	6	8	4	10
42	254	5.9	6.5	7	5	4	10	10	8	7	7	4	9
43A	182L	5.6	6.35	7	6	3	9	9	9	8	7	6	8
43B	144L	5.9	7.1	9	4	5	9	9	9	7	7	5	10
44A	L402	6	6.15	6	9	4	10	10	8	7	8	7	9
44B	L408	6.25	6.55	7	8	5	9	9	10	6	8	6	7
44C	18M	5.6	5.9	5	7	3	10	10	7	8	7	7	9
45	249L	5.85	6.15	6	6	4	10	9	7	6	8	3	9
46	62M	6.6	7.1	6	6	6	10	10	8	7	7	6	10
47A	5M	7.3	7.25	8	7	6	9	10	8	7	8	9	8
48	67J	5.7	6.95	5	3	6	10	10	8	7	7	7	9
48A	39M	6.5	6.45	7	7	5	10	10	8	7	7	4	9
49	12H	6.15	6	8	6	5	9	8	7	5	7	7	7
49A	65M	5.65	5.9	6	8	2	10	9	8	8	8	4	9
50	130K	5.55	6.05	8	7	2	9	8	9	7	7	3	9
51	164K	6.6	6.85	7	8	6	8	8	9	7	8	5	8
52	171K	6	5.8	6	6	5	9	9	7	6	7	7	7
53	136K	5.7	6.85	7	6	4	9	9	9	7	7	5	10
54	27L	5.25	5.2	8	6	1	9	8	8	8	8	5	7
55	63L	7	6.9	7	7	6	9	9	8	6	7	4	9





Adam Moss



Adam Moss

Biltmore Lady on the Hill17M - Daughter of Lot 42



Adam Moss

Biltmore Lady on the Hill11M - Daughter of Lot 42

BILTMORE[®]

Angus Cattle & Dorper Sheep



E&B Lady Wildcat 254

42

E&B Lady Wildcat 254

DOB: 01-24-2022
 +*GAR Discovery 6737H
 *E & B WILDCAT 9402
 19810163 E&B Lady Plus 643

Cow *20402804
 Tattoo 254

#*V A R Discovery 2240
 *G A R Inequity 3132
 #*Connealy Confidence Plus
 #+E&b Lady Credence 190



#+*Basin Payweight 1682
 +*E&B LADY PAYWEIGHT 872
 19207050 +E&B Lady 1023 Precision 914

#+*Basin Payweight 006S
 21AR O Lass 7017
 #+E&B 1680 Precision 1023
 E&B Lady 878 New Desion 441

\$AxH	+153	10%	\$AxJ	+122	20%																
CEW	BW	WW	YW	DOC	HP	MILK	CEM	\$EN	HS												
+15	+1	+85	+146	+24	+15.2	+35	+13	-21	+66												
2%	25%	3%	4%	20%	15%	10%	10%	75%	75%												
CLAW	ANGLE	CW	MARB	RE	\$M	\$W	\$B	\$C													
+41	+47	+76	+1.10	+59	+95	+94	+197	+351													
15%	35%	2%	10%	45%	1%	1%	3%	1%													
CEW	BW	WW	YW	DMI	YH	SC	DOC	HP	CEM	MLK	MW	MH	CW	MRB	RE	FAT	TND	PAP	CLW	ANGL	HS
2	12	26	25	49	53	66	15	17	33	18	68	66	12	11	67	96	63	36	17	35	69

•1/2 Interest, possession is negotiable.

- What an incredible way to lead off the female offering here at the farm. This is one of the oldest Wildcat daughters in production. She has phenomenal power and presence, and is super photogenic, finding her way into the Genex Directory as a reference picture for her sire as a weaned calf, yearling and hopefully again with this year's picture. She is a square-made, heavy-muscled female who moves smooth and graceful, always commanding attention wherever she is. She won't be hard to find on sale day. She combines a great EPD profile from production, to maternal, to management EPDs; 15% Doc, 15% Claw, 35% Angle with top 2% CW and 10% Marbling. She is a very complete female.
- \$M 1%, \$W 1%, \$F 2%, \$G 10%, \$B 2%, and \$C 1%! She is currently the #1 \$C Wildcat dam in the breed and I would argue the phenotypic standout of all Wildcat daughters across the country!
- Her heifer pregnancy sold in last year's sale to Hart Angus in Frederick, SD for \$12,000!
- Top 10% or better for CED, WW, YW, Radg, CEM, Milk, CW, Marb, \$AxH, \$M, \$W, \$F, \$G, \$B, and \$C!
- Top 35% or better for BW, YH, HP, Doc, Claw, Angle, and \$AxJ.
- Open Ready To Flush

LOT 42

Lot 42 - E&B Lady Wildcat 254



E&B Wildcat 9402 - Sire of Lot 42

Biltmore Lucy 182L



Lot 43A - Biltmore Lucy 182L

43A | Biltmore Lucy 182L

DOB: 10-01-2023 Cow #*20828957 Tattoo: 182L

*Connealy Clarity
 +*POSS WINCHESTER
 20060473 +*Poss Blueblood 6502

Cherry Creek Land Grant
 *Breshie of Conana 6988
 Poss Easy Impact 0119
 Poss Blueblood 920
 #+*G A R Ashland
 +*Chair Rock Sure Fire 6095
 *EXAR Stallion 7986
 EXAR Lucy 3056



*G A R Home Town
 +*BILTMORE LUCY 148J
 20267370 *EXAR Lucy 9264

\$AxH +297 1% \$AxJ +280 1%

CED	BW	WW	YW	DOC	HP	MILK	CEM	SEN	HS												
+16	-1.2	+83	+151	+21	+11.3	+22	+13	-15	+.30												
1%	10%	10%	10%	45%	60%	80%	10%	50%	20%												
CLAW	ANGLE	CW	MARB	RE	\$M	\$W	\$B	\$C													
+49	+.43	+76	+1.91	+1.27	+79	+80	+249	+402													
50%	25%	10%	1%	3%	75%	10%	1%	1%													
CED	BW	WW	YW	DMI	YH	SC	DOC	HP	CEM	MLK	MW	MH	CW	MRB	RE	FAT	TND	PAP	CLW	ANGL	HS
5	12	38	13	62	80	3	19	42	20	78	75	64	17	1	5	54	60	18	45	19	14

- **Selling Pick of Lot 43A or 43B. Biltmore will retain the heifer that is not chosen.**
- 182L is out of the great Lucy 148J who is continuing to earn her way as a lead donor and producer in the program. Selling several sons in the sale and offering these two daughters. Don't forget the embryo lots, 43C and 43D. 182L is sired by ST Genetics Roster member, Poss Winchester, whose calves are being received well across the country. Pol-lard Farms in Enid, OK bought a pregnancy of this same mating for \$13,000 in the 2023 NC Spring Fever Sale. We feel like the genetic potential is off the charts with 182L. She has a bright future ahead wrapped in a stylish package you can't miss!
- When you sort her for her combination of CED, BW, WW and YW, she is 1 of 4 Winchester daughters in the breed.
- When sorted for CED, BW, WW, YW, Marb and \$C, she is the #1 Winchester daughter in the breed.
- When sorted for CED, BW, WW, YW, Marb and \$C, she is in the top 8 of ALL non-parent females in the breed!
- Top 15% or better for CED, BW, WW, YW, Radg, SC, CEM, HS, CW, Marb, RE, Dairy Indexes, \$M, \$W, \$F, \$G, \$B and \$C!
- Open



Biltmore Lucy 148J - Dam of Lots 43A, 43B, 43C and 43D

Biltmore Lucy 144L



43B Biltmore Lucy 144L

DOB: 08-31-2023 Cow +*20827260 Tattoo: 144L
 *S S Enforcer E812 #SvdGen Enhance
 +*WILLIAMS HOLLYWOOD 700-380 #S S Miss Daybreak K011 3K17
 19850747 +*Powell Erica 7312 +*ECO Lombardi 1512
 *G A R Home Town #+*G A R Ashland
 +*BILTMORE LUCY 148J +*Chair Rock Sure Fire 6095
 20267370 *EXAR Lucy 9264 *EXAR Stallion 7986
 EXAR Lucy 3056



\$AxH	+238	2%	\$AxJ	+244	1%																
CED	+10	BW	-1	WW	+83	YW	+150	DOC	+9	HP	+12.7	MILK	+26	CEM	+12	SEN	-32	HS	+40		
	20%		20%		10%		10%		90%		45%		55%		75%		85%		30%		
CLAW	+34	ANGLE	+37	CW	+65	MARB	+1.60	RE	+1.14	\$M	+69	\$W	+78	\$B	+219	\$C	+353				
	5%		10%		25%		3%		10%		35%		70%		3%		2%				
CED	BW	WW	YW	DMI	YH	SC	DOC	HP	CEM	MLK	MW	MH	CW	MRB	RE	FAT	TND	PAP	CLW	ANGL	HS
3	4	61	26	39	57	3	71	35	18	65	61	41	35	3	11	19	33	2	6	11	30

- **Selling Pick of Lot 43A or 43B. Biltmore will retain the heifer that is not chosen.**
- 144L was a standout pre weaning with her style, power, and growth. She is changing every day as she is growing and developing. Like her maternal sister, she should be an easy choice for those of you marketing bulls and females. They both have a great combination of CED, BW, WW, YW, Marb, and RE. 144L adds a better foot EPD to go with it. She is neat fronted with an attractive muscle pattern.
- When sorted for CED, BW, WW, YW, Claw, Angle, Marb and RE, she is in the top 3 of all Hollywood Daughters.
- Top 15% or better for WW, YW, Radg, SC, CEM, MH, Claw, Angle, PAP, Marb, RE, Dairy Indexes, \$W, \$F, \$G, \$B and \$C!
- Top 35% or better for CED, BW, YH, MW, CW, Fat, and \$M!
- Open

43C Winchester X Biltmore Lucy 148J

Due: Embryo
 *Connealy Clarity Cherry Creek Land Grant
 +*POSS WINCHESTER *Breshie of Conanaq 6988
 20060473 +*Poss Blueblood 6502 Poss Easy Impact 0119
 Poss Blueblood 920
 *G A R Home Town #+*G A R Ashland
 +*BILTMORE LUCY 148J +*Chair Rock Sure Fire 6095
 20267370 *EXAR Lucy 9264 *EXAR Stallion 7986
 EXAR Lucy 3056

S	+9	+1.6	+90	+161	+27	+12.8	+24	+3	+47
D	+15	-1.2	+65	+117	+14	+10.9	+27	+16	+20
S	+38	+49	+93	+1.66	+1.28	+79	+81	+252	+406
D	+58	+42	+55	+1.73	+74	+74	+70	+216	+354

- This embryo offering will result in full siblings to Lot 43A, the high-ranking Winchester daughter out of Biltmore Lucy 148J. These are probably some embryos that we should be putting in, but we want to share what the 148J donor can do with others.
- 3 Conventional Embryos with a 1 pregnancy guarantee put in by a certified embryologist.

43D K A Kindred X Biltmore Lucy 148J

Due: Embryo
 *GB Fireball 672 +*G A R Sure Fire 6404
 *K A KINDRED *GB Anticipation 432
 20446645 *K A Miss High Weigh 862 K A Miss Discovery 5163
 #+*G A R Ashland
 +*BILTMORE LUCY 148J +*Chair Rock Sure Fire 6095
 20267370 *EXAR Lucy 9264 *EXAR Stallion 7986
 EXAR Lucy 3056

S	+10	-.5	+78	+146	+21	+13.9	+30	+12	+10
D	+15	-1.2	+65	+117	+14	+10.9	+27	+16	+20
S	+46	+46	+75	+1.79	+1.02	+74	+78	+244	+390
D	+58	+42	+55	+1.73	+74	+74	+70	+216	+354

- These embryos are sired by the ST Roster member, KA Kindred. This should be a very complementary mating with added carcass power. These embryos should produce calves with Calving Ease, Growth, Solid Management Traits, Elite Carcass Values in an energy-efficient package that will lead to profit!
- 3 Conventional Embryos with a 1 pregnancy guarantee put in by a certified embryologist.

Biltmore Ruby L402



Lot 44A - Biltmore Ruby L402

B 44A | Biltmore Ruby L402

DOB: 10-09-2023 Cow #*20806929 Tattoo: L402
 +*Baldrige Alternative E125 Poss Easy Impact 0119
 *SG SALVATION Baldridge Blackbird A030
 19559741 +*MGR JP Rita 7037 #+*Basin Pavweight 1682
 *MGR Rita 2145
 *Bvero Black Maic 3348 *Silveiras Conversion 8064
 +*HR RUBY 8095 *Bvero Elia Cupcake 5900
 19212665 +*44 Rubv 2357 #*Connealy Capitalist 028
 +*44 Rubv X110



\$AxH	+213	5%	\$AxJ	+221	3%																																						
CE	+1	BW	+4.5	WW	+102	YW	+177	DOC	+23	HP	+13.7	MILK	+27	CEM	+4	SEN	-56	HS	+39																								
	90%		95%		1%		1%		35%		35%		45%		90%		95%		30%																								
CLAW	+39	ANGLE	+50	CW	+96	MARB	+1.14	RE	+1.03	\$M	+58	\$W	+81	\$B	+214	\$C	+336																										
	15%		60%		1%		20%		15%		65%		10%		4%		4%																										
CE	68	BW	77	WW	2	YW	3	DMI	99	YH	33	DOC	11	SC	50	HP	26	CEM	54	MLK	41	MW	3	MH	9	CW	1	MRB	10	RE	29	FAT	61	TND	37	PAP	88	CLW	7	ANGL	81	HS	13



44 Ruby 2357 - Maternal grandam of Lots 44A, 44B, and 44C.

- 44A starts a string of sisters by HR Ruby 8095. The Ruby Family has made its mark many years ago in the Angus Breed. They are dependable females that have been highly sought after. L402 and her sisters stem from the Great 44 Ruby 2357, now deceased; was selected in the 2016 44 Farms Sale for \$500,000 by High Roller. 2357 is over a million dollar earner in progeny sales and continues to leave a lasting impression on the breed. L402 is a well-made female with high growth figures being over +100 for WW and over +175 for YW EPD, and combines excellent fertility, hair shed, and carcass traits. She has balanced maternal values as well and has the potential to make a great impact on any breeding program.
- Top 15% or better for WW, YW, Radg, SC, MW, MH, Claw, Dairy Indexes, CW, \$W, \$F, \$G, \$B, and \$C.
- Top 25% or better for YH, HP, HS, Marb, and RE.
- Open

Biltmore Ruby L408



Lot 44B - Biltmore Ruby L408

44B | Biltmore Ruby L408

DOB: 10-14-2023 Cow +*20806930 Tattoo: L408

+*Baldridge Alternative E125
*SG SALVATION
19559741 +*MGR JP Rita 7037

Poss Easy Impact 0119
Baldridge Blackbird A030
+*Basin Pavweight 1682
*MGR Rita 2145
*Silveiras Conversion 8064
*Byerqo Elia Cupcake 5900
#*Connealy Capitalist 028
+*44 Rubv X110



*Byerqo Black Maaic 3348
+*HR RUBY 8095
19212665 +*44 Rubv 2357

\$AxH	+218	4%	\$AxJ	+208	5%	CED	BW	WW	YW	DOC	HP	MILK	CEM	\$EN	HS			
+6	+2.0	+77	+135	+20	+12.1	+29	+8	-24	+54	55%	70%	20%	20%	50%	30%	55%	70%	55%
CLAW	ANGLE	CW	MARB	RE	\$M	\$W	\$B	\$C										
+44	+42	+76	+1.32	+98	+71	+75	+213	+347	30%	20%	10%	10%	20%	30%	15%	4%	3%	

CED	BW	WW	YW	DMI	YH	SC	DOC	HP	CEM	MLK	MW	MH	CW	MRB	RE	FAT	TND	PAP	CLW	ANGL	HS
36	36	40	40	44	60	91	51	32	46	16	61	53	9	7	13	45	24	48	23	35	23

- L408 offers more calving ease and moderate growth of the two full sisters. She ties in solid maternal, management and carcass traits making her a very complete female. Top 30% for \$M, 15% for \$W and 4% for \$B. She, like her sister, has the potential to make it into the donor pen in the future. The Salvation x Ruby cross has worked well for us. One of last year's highlights was Biltmore Ruby K402, also a Salvation out of a Ruby 2357 daughter who was selected by 909 Ranch for \$15,000 half interest.
- Top 35% or better for WW, YW, Radg, YH, HP, Milk, MH, Claw, Angle, CW, Marb, RE, Dairy Indexes, \$M, \$W, \$F, \$G, \$B and \$C!
- Open

44C | Biltmore Ruby 18M

DOB: 02-01-2024 Cow +*20919079 Tattoo: 18M

+*Basin Deposit 6249
*BASIN JAMESON 1076
20071781 *Basin Joy 9140

*Byerqo Black Maaic 3348
+*HR RUBY 8095
19212665 +*44 Rubv 2357

\$AxH	+225	3%	\$AxJ	+262	1%	CED	BW	WW	YW	DOC	HP	MILK	CEM	\$EN	HS				
+3	+4.2	+123	+198	+22	+16.9	+29	+8	-76	+20	75%	95%	1%	1%	40%	10%	30%	55%	95%	10%
CLAW	ANGLE	CW	MARB	RE	\$M	\$W	\$B	\$C											
+47	+38	+104	+1.69	+98	+66	+101	+248	+388	40%	10%	1%	2%	20%	45%	1%	1%	1%		

CED	BW	WW	YW	DMI	YH	SC	DOC	HP	CEM	MLK	MW	MH	CW	MRB	RE	FAT	TND	PAP	CLW	ANGL	HS
68	75	1	3	96	2	12	41	7	55	45	1	1	1	2	11	94	26	64	37	21	6

- This high-growth Jameson daughter is a maternal sister to Lots 44A and 44B. She is the number 3 WW and number 10 YW EPD daughter of Jameson in the breed out of 777 non-parent daughters. Beyond the growth, she also puts together a great combination of SC, HP, Milk, Claw, Angle, HS and Carcass Values! When studying the Indexes, she is balanced for \$M and excels for \$W, \$F, \$G, \$B and \$C! What an opportunity to put together the Basin Joy and Ruby Cow families in one pedigree!
- Top 5% or better for WW, YW, Radg, YH, MW, MH, CW, Marb, Dairy Indexes, \$W, \$F, \$G, \$B and \$C!
- Top 35% or better for SC, HP, Milk, Claw, Angle, HS, and RE!
- Open

Statesman Daughters

- Blackcap 249L is a super attractive Statesman Daughter from a Dual Threat daughter who scanned a 5.01 IMF and a 9.7 RE. Her dam, J252, is out of an Edisto Pines donor, Vintage Blackcap 7073, who is out of a Pathfinder sire, Discovery, and stems from the New Design 1200 donor. She expresses multi-trait excellence for WW, YW, SC, HP, CEM, Claw, Angle, PAP, HS, CW, Marb and RE with high-ranking indexes that indicate a ton of economic value!
- Top 35% or better for WW, YW, Radg, YH, SC, HP, CEM, MH, Claw, Angle, PAP, HS, CW, Marb, RE, Dairy Indexes, \$M, \$W, \$F, \$G, \$B and \$C!
- Open



Lot 45 - Biltmore Blackcap 249L

B 45 | Biltmore Blackcap 249L
 DOB: 12-20-2023 Cow *20865658 Tattoo: 249L

*Tehama Patriarch F028
 *VIRGINIA TECH STATESMAN
 20085208 +*Vpi 310A Rita 9G6 Et

+*G A R Dual Threat
 +*EPF BLACKCAP J252
 20278344 *Vintage Blackcap 7073

*S S Niaqara Z29
 Tehama Elite Blackbird D826
 #*Ellinson Homestead 6030
 AED Rita 310A
 #+*G A R Sure Fire
 +*G A R Daybreak A3010
 #*V A R Discovery 2240
 +*V A R Blackcap 3068

ANGUS

\$AxH	+174	15%	\$AxJ	+185	10%																
CEW	+1	BW	+1.9	WW	+88	YW	+156	DOC	+12	HP	+16.8	MILK	+26	CEM	+16	\$EN	-27	HS	+23		
	90%		65%		5%		4%		80%		10%		55%		1%		80%		10%		
CLAW	+35	ANGLE	+34	CW	+85	MARB	+95	RE	+91	\$M	+88	\$W	+82	\$B	+202	\$C	+350				
	10%		3%		2%		30%		25%		4%		5%		10%		2%				
CEW	BW	WW	YW	DMI	YH	SC	DOC	HP	CEM	MILK	MW	MH	CW	MRB	RE	FAT	TND	PAP	CLW	ANGL	HS
59	54	3	4	93	9	17	65	12	1	43	23	9	3	22	20	100	22	11	6	4	10

B 46 | Biltmore Lucy 62M
 DOB: 02-14-2024 Cow *20917698 Tattoo: 62M

*Tehama Patriarch F028
 *VIRGINIA TECH STATESMAN
 20085208 +*Vpi 310A Rita 9G6 Et

#SvdGen Enhance
 +*BILTMORE LUCY 30J
 20252297 *Basin Lucy 3150

*S S Niaqara Z29
 Tehama Elite Blackbird D826
 #*Ellinson Homestead 6030
 AED Rita 310A
 #*SvdGen Exceed 3223
 SvdGen Rita 2618
 #Basin Rainmaker P175
 +*Basin Lucy 1667

ANGUS

\$AxH	+168	20%	\$AxJ	+160	20%																
CEW	+7	BW	+7	WW	+86	YW	+165	DOC	+20	HP	+17.6	MILK	+33	CEM	+11	\$EN	-39	HS	+38		
	45%		40%		10%		2%		50%		10%		10%		25%		95%		30%		
CLAW	+34	ANGLE	+35	CW	+71	MARB	+1.67	RE	+52	\$M	+83	\$W	+83	\$B	+213	\$C	+359				
	5%		4%		15%		2%		70%		10%		5%		4%		2%				
CEW	BW	WW	YW	DMI	YH	SC	DOC	HP	CEM	MILK	MW	MH	CW	MRB	RE	FAT	TND	PAP	CLW	ANGL	HS
92	91	2	1	100	2	20	46	5	42	6	5	1	1	33	57	10	43	12	8	29	



Lot 46 - Biltmore Lucy 62M

- The Statesman daughters are very likable for their type and kind. This is a young female who continues to get better every week. She combines three pathfinder sires on the bottom side of her pedigree while tying in the incredible Lucy Family and from a dam who scores a 103.6 MPPA on 2 calves. 62M has an outstanding EPD profile that excels for BW, WW, YW, Radg, SC, HP, CEM, Milk, Claw, Angle, HS, CW, Marb, and all indexes are in the top 10% of the breed or better! She is also the number 3 Marbling non-parent daughter of Statesmen. There will be a pile of longterm value in this heifer!
- Top 5% or better for YW, Radg, YH, Claw, Angle, Marb, \$W, \$G, \$B, and \$C!
- Top 35% or better for BW, WW, SC, HP, CEM, Milk, MW, MH, CW, Dairy Indexes, \$M and \$F!

Spring Pairs

B 47 | Biltmore Lucy 72K

DOB: 02-21-2022 Cow +*20447565 Tattoo: 72K

#*Casino Bomber N33
*K C F BENNETT EXPONENTIAL
19507801 #*K C F Miss Southside B226

#+*KM Broken Bow 002
#*Casino Annie K48
#*K C F Bennett Southside
K C F Miss Trustmark W236
#*Connealy Consensus
Blue Lilly of Conana 16
#*B P F Special Focus 504
+*Basin Lucy W213



#*Connealy Consensus 7229
EXAR LUCY 3056
17462665 EXAR Lucy 1061

\$AxH	+131	20%	\$AxJ	+122	20%																
CED	+16	BW	-1.7	WW	+68	YW	+117	DOC	+12	HP	+15.0	MILK	+38	CEM	+9	\$EN	-28	HS	+48		
	1%		4%		25%		30%		75%		15%		3%		40%		90%		40%		
CLAW	+37	ANGLE	+46	CW	+55	MARB	+80	RE	+67	SM	+69	SW	+79	SB	+155	SC	+270				
	5%		30%		20%		25%		35%		30%		4%		25%		20%				
CED	BW	WW	YW	DMI	YH	SC	DOC	HP	CEM	MLK	MW	MH	CW	MRB	RE	FAT	TND	PAP	CLW	ANGL	HS
9	25	22	26	77	16	30	67	10	85	2	37	11	27	24	45	10	16	54	4	16	59



Lot 47A - Biltmore Lucy 5M

- Leading off the Spring Pairs with 72K, another 3056 daughter in our program. EXAR Lucy 3056 is also the maternal grandam to our donor, Lucy 148J. There is an abundance of 3056 genetics in this offering and we are thankful she has produced enough to share. 72K offers plenty of calving ease, low birth, high-growth genetics with above average maternal value, excellent marks for Claw and Angle, and well-balanced carcass traits. She has a very neat udder attachment and is doing a fantastic job with her first calf sired by the Alta Standout VAR Crosswind! She has 24 EPDs and Indexes in the top 35% of the breed!
- AI'd 5.10.24 to KA Kindred, confirmed safe.
- Due 2.19.25

B 48 | Biltmore Bluebird Queen 67J

DOB: 02-27-2021 Cow *20246312 Tattoo: 67J

#SvdGen Enhance
*MOGCK ENTICE
18952921 #*MOGCK Erica 2255

#SvdGen Exceed 3223
SvdGen Rita 2618
Moock Sure Shot 253
MOGCK Erica 2162
#Baldridae Kaboom K243 KCF
+Baldridae Forever Ladv K856
#Basin Rainmaker 814Z
Biltmore Bluebird Queen 56G



#Baldridae Navigator N5
#BILTMORE BLUEBIRD QUEEN 31U
16096555 #Biltmore Bluebird Queen 48N

\$AxH	+62	60%	\$AxJ	+37	60%																
CED	+2	BW	+1.4	WW	+57	YW	+108	DOC	+23	HP	+16.7	MILK	+38	CEM	+1	\$EN	-12	HS	+18		
	80%		50%		55%		45%		25%		10%		3%		95%		55%		3%		
CLAW	+43	ANGLE	+52	CW	+45	MARB	+61	RE	+57	SM	+76	SW	+66	SB	+141	SC	+259				
	20%		65%		45%		40%		45%		15%		25%		45%		30%				
CED	BW	WW	YW	DMI	YH	SC	DOC	HP	CEM	MLK	MW	MH	CW	MRB	RE	FAT	TND	PAP	CLW	ANGL	HS
85	67	71	58	51	39	4	49	8	81	8	85	89	69	51	65	30	63	55	40	81	13

- 67J is on her way to a long career. She has two calves with a 338 Calving Interval and a 103.6 MPPA and bred back for her third calf. You can't ask for much more than that! She is a very balanced trait Entice daughter out of a Pathfinder dam, 31U, who offers balanced producing, high-ranking maternal value, and balanced carcass traits. Her dam had a calving interval of 368 days on 13 calves. If longevity means anything to the bottom line, then pay attention here!
- AI 5.10.24 to GAR Powercat, confirmed safe.
- Due 2.19.25



Lot 48A - Biltmore Bluebird Queen 39M

B 47A | Biltmore Lucy 5M

DOB: 01-24-2024 Cow *20918969 Tattoo: 5M

*GB Fireball 672
+*V A R CROSSWIND 1361
20020355 +*Vintage Blackcap 8263

#*K C F Bennett Exponential
+*BILTMORE LUCY 72K
20447565 EXAR Lucy 3056

+*G A R Sure Fire 6404
*GB Anticipation 432
#+*Baldridae Colonel C251
+*V A R Blackcap 9319
#*Casino Bomber N33
#*K C F Miss Southside B226
#*Connealy Consensus 7229
EXAR Lucy 1061



\$AxH	+228	3%	\$AxJ	+235	2%																
CED	+15	BW	-.6	WW	+80	YW	+138	DOC	+17	HP	+16.2	MILK	+32	CEM	+15	\$EN	-40	HS	+26		
	2%		15%		15%		20%		65%		15%		15%		2%		95%		15%		
CLAW	+38	ANGLE	+43	CW	+75	MARB	+1.17	RE	+1.28	SM	+71	SW	+81	SB	+215	SC	+350				
	10%		25%		10%		15%		3%		30%		10%		10%		3%				
CED	BW	WW	YW	DMI	YH	SC	DOC	HP	CEM	MLK	MW	MH	CW	MRB	RE	FAT	TND	PAP	CLW	ANGL	HS
2	11	17	17	63	8	6	53	16	19	22	9	4	8	7	4	19	9	23	10	24	34

- Biltmore Lucy 5M is a certain highlight in this group and can stand well on her own. She is a stout-made heifer with a bright future ahead of her. She probably has as steady and complete of an EPD and DNA package as we have in this offering. She is in the top 35% or better for 28 of 31 EPDs and Indexes with 21 of those being in the top 15% of the breed or better! She has 10 single-digit traits on her DNA profile and 20 of those being in the top 35% of the breed. For those of you marketing bulls and females, she is just about as fault free as you can make one genetically. Put this young lady on the short list, she has a bright future!

B 48A | Biltmore Bluebird Queen 39M

DOB: 02-08-2024 Cow *20919010 Tattoo: 39M

*GB Fireball 672
+*V A R CROSSWIND 1361
20020355 +*Vintage Blackcap 8263

#*MOGCK Entice
*BILTMORE BLUEBIRD QUEEN 67J
20246312 #Biltmore Bluebird Queen 31U

+*G A R Sure Fire 6404
*GB Anticipation 432
#+*Baldridae Colonel C251
+*V A R Blackcap 9319
#SvdGen Enhance
#*MOGCK Erica 2255
#Baldridae Navigator N5
#Biltmore Bluebird Queen 48N



\$AxH	+179	15%	\$AxJ	+140	30%																
CED	+10	BW	+0	WW	+69	YW	+127	DOC	+21	HP	+17.3	MILK	+33	CEM	+11	\$EN	-23	HS	+11		
	20%		25%		40%		30%		45%		10%		10%		25%		70%		3%		
CLAW	+42	ANGLE	+51	CW	+61	MARB	+1.23	RE	+87	SM	+79	SW	+74	SB	+194	SC	+331				
	20%		65%		35%		35%		30%		15%		20%		10%		5%				
CED	BW	WW	YW	DMI	YH	SC	DOC	HP	CEM	MLK	MW	MH	CW	MRB	RE	FAT	TND	PAP	CLW	ANGL	HS
15	19	52	30	76	73	6	39	6	32	19	60	71	52	6	26	26	65	32	30	69	9

- 39M is another well-rounded Crosswind daughter who offers plenty of calving ease, growth, fertility, milk, balanced management traits with high marks for hair shed, and top-end carcass values. Study the indexes, all ranking in the top 20% of the breed or better!

Spring & Fall Pairs

B 49 | Biltmore Erica 12H

DOB: 02-15-2020 Cow *19843772 Tattoo: 12H
 #*Connealy In Sure 8524 #*Mytty In Focus
 #*G A R SURE FIRE Entrena of Conaqa 657
 17328461 + Chair Rock 5050 G A R 8086 #+G A R New Desiqn 5050
 #Connealy Thunder
 #Sitz Reinvested 636a #+Sitz Ellunas Elite 656T
 *BILTMORE ERICA 83F #*S Summit 956
 19721525 Biltmore Erica 10D Biltmore Erica 173A



SAXH	+162	10%	SAXJ	+133	15%																
CED	BW	WW	YW	DOC	HP	MILK	CEM	SEN	HS												
+15	-1.1	+62	+112	+26	+11.6	+25	+11	-2	+20												
2%	10%	40%	40%	15%	50%	60%	20%	30%	4%												
CLAW	ANGLE	CW	MARB	RE	SM	SW	SB	SC													
+50	+49	+54	+1.06	+62	+77	+66	+177	+307													
50%	50%	25%	10%	40%	15%	25%	10%	4%													
CED	BW	WW	YW	DMI	YH	SC	DOC	HP	CEM	MLK	MW	MH	CW	MRB	RE	FAT	TND	PAP	CLW	ANGL	HS
27	57	55	26	58	44	36	20	34	84	61	71	44	36	13	33	74	89	21	43	54	10



• Erica 12H is the dam of the Lot 11 Wildcat son in the bull offering. She has a Calving Interval of 366 days with a 99.43 MPPA, weaning her calves at 61.5% of her body weight. That will get the job done! She is a calving-ease female with moderate growth, top 15% maternal index, and strong carcass marks. She has a stout management profile with Docility, PAP, and HS being in the top 15% and balanced foot EPDs. She does her job well; make sure and study Lot 11 and her heifer calf at side.

• AI'd 5.10.24 to Connealy Craftsman, confirmed safe.

• Due 2.19.25

B 49A | Biltmore Erica 65M

DOB: 02-16-2024 Cow *20917897 Tattoo: 65M
 #Sitz Resilient 10208 #*Sitz Stellar 726D
 *CONNEALY CRAFTSMAN #Sitz Miss Burgess 1856
 20132505 #*Black Cathv of Conaqa 8521 *Connealy Niobrara 5451
 #+*G A R Sure Fire Black Carla of Conaqa 450
 *BILTMORE ERICA 12H #*Connealy In Sure 8524
 19843772 #Biltmore Erica 83F +Chair Rock 5050 G A R 8086
 #Sitz Reinvested 636a
 Biltmore Erica 10D



SAXH	+124	45%	SAXJ	+150	25%																
CED	BW	WW	YW	DOC	HP	MILK	CEM	SEN	HS												
+5	+1.7	+88	+155	+29	+17.3	+29	+3	-20	+14												
60%	60%	5%	4%	10%	10%	30%	95%	60%	4%												
CLAW	ANGLE	CW	MARB	RE	SM	SW	SB	SC													
+46	+42	+65	+94	+78	+96	+87	+169	+315													
35%	20%	25%	30%	40%	2%	2%	25%	10%													
CED	BW	WW	YW	DMI	YH	SC	DOC	HP	CEM	MLK	MW	MH	CW	MRB	RE	FAT	TND	PAP	CLW	ANGL	HS
71	85	12	8	91	10	33	8	2	98	37	54	15	24	18	27	55	82	25	38	23	12



Lot 49A - Biltmore Erica 65M

B 50 | Biltmore Blackcap 130K

DOB: 08-29-2022 Cow *20586126 Tattoo: 130K
 #+*G A R Ashland #G A R Early Bird
 *G A R HOME TOWN #*Chair Rock Ambush 1018
 19266718 +*Chair Rock Sure Fire 6095 #+*G A R Sure Fire
 #*Baldrige Wavlon W34 #+*Chair Rock Prograss 3005
 #+*GAR-EGL Protege
 #*BILTMORE BLACKCAP 144H #Baldrige Blackcap T163
 20099048 BoBo Blackcap 1501 #*Connealy Consensus 7229
 +Bo Bo Blackcap 9113



SAXH	+202	2%	SAXJ	+155	10%																
CED	BW	WW	YW	DOC	HP	MILK	CEM	SEN	HS												
+16	-1.0	+74	+134	+18	+12.9	+20	+12	-20	+46												
1%	10%	15%	10%	45%	35%	90%	15%	75%	35%												
CLAW	ANGLE	CW	MARB	RE	SM	SW	SB	SC													
+70	+46	+49	+1.41	+63	+59	+68	+185	+299													
95%	30%	35%	2%	40%	55%	20%	5%	10%													
CED	BW	WW	YW	DMI	YH	SC	DOC	HP	CEM	MLK	MW	MH	CW	MRB	RE	FAT	TND	PAP	CLW	ANGL	HS
6	17	46	20	35	89	23	59	48	70	80	49	79	64	9	50	43	88	36	99	45	32



Lot 50 - Biltmore Blackcap 130K

• This stout feminine-made Home Town daughter will be easy to find on sale day. She has that front pasture style that we all like. She has a great combination of production traits from a top 1% CED to High Growth, and stout Radg and DMI. She offers a balanced set of management traits with the a stout shot of Marbling as you would expect from Home Town. She should calve to ST Genetics highlight roster member, KA Kindred, before sale day!

• AI'd to KA Kindred on 11.30.23

• Due 9.10.24

Fall Pairs



Lot 51 - Biltmore Blueblood 164K

B 51 | Biltmore Blueblood 164K
 DOB: 09-18-2022 Cow *20585494 Tattoo: 164K
 #+*G A R Sunrise #MCC Daybreak
 +*G A R SUNBEAM +*G A R Objective R227
 18636166 *G A R Inaenuity 3132 #+G A R Inaenuity
 Biltmore Thunder 178D #*G A R 28 Ambush N340
BILTMORE BLUEBLOOD 200G #Connealy Thunder
 19855051 Biltmore Blueblood 26A #Biltmore Erica 79Y
 #*Apex Windy 078
 Biltmore Blueblood 53U



\$AxH	+142	30%	\$AxJ	+158	20%																
CED	BW	WW	YW	DOC	HP	MILK	CEM	\$EN	HS												
+7	+3.1	+86	+148	+22	+14.0	+28	+9	-31	+14												
45%	90%	10%	10%	40%	30%	35%	45%	85%	4%												
CLAW	ANGLE	CW	MARB	RE	\$M	\$W	\$B	\$C													
+60	+47	+50	+78	+1.19	+70	+78	+149	+263													
90%	45%	60%	45%	10%	35%	10%	50%	45%													
CED	BW	WW	YW	DMI	YH	SC	DOC	HP	CEM	MLK	MW	MH	CW	MRB	RE	FAT	TND	PAP	CLW	ANGL	HS
30	68	20	24	94	57	28	53	19	38	30	29	40	55	40	3	7	49	71	98	62	1

•Sunbeam on this Thunder daughter worked very well. She is a very feminine-made female who is sure to strike your attention on sale day. She has the front pasture style that will make your neighbors pull in the driveway. She has a punchy set of growth figures, with great fertility marks, excellent hair shed and a stout shot of ribeye area. Top 35% for \$M and 10% for \$W. She will also calve before sale day to the Kaiser Bull, KA Kindred.
 •AI'd 11.30.23 to KA Kindred
 •Due 9.10.24



Lot 52 - Biltmore Bluebird Queen 171K

B 52 | Biltmore Bluebird Queen 171K
 DOB: 09-20-2022 Cow 20586295 Tattoo: 171K
 +*GAR Discovery 6737H #*V A R Discovery 2240
 *E & B WILDCAT 9402 *G A R Inaenuity 3132
 19810163 E&B Lady Plus 643 #*Connealy Confidence Plus
 #+E&B Lady Credence 190
 #*Apex Windy 078 #H A R B Windy 702 JH
BILTMORE BLUEBIRD QUEEN 25A Apexette Lucy 6037
 17616348 #Biltmore Bluebird Queen 31U #Baldridge Navigator N5
 #Biltmore Bluebird Queen 48N



\$AxH	+115	25%	\$AxJ	+105	25%																
CED	BW	WW	YW	DOC	HP	MILK	CEM	\$EN	HS												
+8	+1.3	+79	+132	+19	+16.1	+28	+8	-27	+31												
30%	50%	10%	15%	40%	10%	40%	50%	85%	15%												
CLAW	ANGLE	CW	MARB	RE	\$M	\$W	\$B	\$C													
+44	+39	+50	+97	+62	+78	+78	+150	+273													
25%	10%	30%	15%	40%	10%	5%	30%	20%													
CED	BW	WW	YW	DMI	YH	SC	DOC	HP	CEM	MLK	MW	MH	CW	MRB	RE	FAT	TND	PAP	CLW	ANGL	HS
21	31	23	47	61	31	95	30	6	54	50	51	43	49	19	51	70	61	7	18	7	28

•Bluebird Queen 171K is a maternal brother to the Lot 30 bull. She comes from a dam who has a 106.21 MPPA weaning 9 calves on a 366-day calving interval at 46.4% of her body weight. She has the calving ease and growth combo you like with added maternal value, excellent management traits, and balanced carcass traits. Top 20% \$M and 10% \$W! Her calf should be on the ground before sale day!
 •AI'd 11.30.23 to Poss Winchester
 •Due 9.10.24



B 53 | Biltmore Rita 136K
 DOB: 09-08-2022 Cow +*20610153 Tattoo: 136K
 #+*G A R Ashland *G A R Early Bird
 *G A R HOME TOWN #*Chair Rock Ambush 1018
 19266718 +*Chair Rock Sure Fire 6095 #+*G A R Sure Fire
 #*Chair Rock Prograss 3005
 #+*TEX Playbook 5437 #+*Basin Pavweight 1682
 +*DEER VALLEY RITA 8635 +*Rita 1C43 of 9M26 Complete
 19218480 *Deer Valley Rita 5646 #+*SandPoint Butkus X797
 Deer Valley Rita 3686



\$AxH	+214	1%	\$AxJ	+214	1%																
CED	BW	WW	YW	DOC	HP	MILK	CEM	\$EN	HS												
+8	+3.8	+84	+138	+28	+12.3	+20	+12	-26	+58												
30%	95%	3%	10%	10%	45%	90%	15%	85%	60%												
CLAW	ANGLE	CW	MARB	RE	\$M	\$W	\$B	\$C													
+69	+40	+68	+1.07	+96	+66	+67	+204	+331													
95%	10%	10%	10%	10%	35%	20%	2%	2%													
CED	BW	WW	YW	DMI	YH	SC	DOC	HP	CEM	MLK	MW	MH	CW	MRB	RE	FAT	TND	PAP	CLW	ANGL	HS
42	80	20	48	23	35	62	14	47	19	82	28	16	13	25	14	4	92	29	99	17	56

•136K is a well-balanced female that is backed by great sires such as Home Town, Playbook, and 1682. She has added growth, and a stout set of carcass values. When you study her economic values, she is above average for \$M and top 10% or better for \$F, \$G, \$B and \$C. She will calve to Kindred before the sale!
 •AI'd to KA Kindred on 11.30.23
 •Due 9.10.24

Spring Bred Heifers

• We probably could have put this Sunbeam daughter anywhere in the sale. She is neat fronted with a stout rib cage and neat muscle pattern. She is out of our donor, Ingram Rita 0510, who is a brother to Lot 21. She has a great combination of calving ease, high growth, milk, docility, and marbling. She has bred up for a spring calf to Select Sires and ST Standout, Connealy Craftsman, for what should be an incredibly complete calf.

- AI'd 4.22.24 to Connealy Craftsman, confirmed safe.
- Due 2.1.25



Lot 54 - Biltmore Rita 27L

B 54 | Biltmore Rita 27L

DOB: 02-01-2023 Cow #*20647670 Tattoo: 27L
 #*G A R Sunrise #MCC Daybreak
 #*G A R SUNBEAM #*G A R Obiective R227
 18636166 #*G A R Inaenuity #*G A R Inaenuity
 #*S S Enforcer E812 #*G A R 28 Ambush N340
 #*INGRAM RITA 0510 #SvdGen Enhance
 19844039 #*Crazy K Rita 6466 #S S Miss Daybreak K011 3K17
 #*Crazy K Rita 5021



\$AXH	+199	10%	\$AXJ	+182	15%																
CED	BW	WW	YW	DOC	HP	MILK	CEM	\$EN	HS												
+9	+1	+70	+130	+20	+9.1	+30	+7	-14	+55												
30%	25%	35%	25%	50%	85%	25%	65%	45%	60%												
CLAW	ANGLE	CW	MARB	RE	\$M	\$W	\$B	\$C													
+56	+60	+43	+1.52	+90	+59	+73	+184	+298													
75%	95%	75%	4%	25%	65%	20%	15%	20%													
CED	BW	WW	YW	DMI	YH	SC	DOC	HP	CEM	MLK	MW	MH	CW	MRB	RE	FAT	TND	PAP	CLW	ANGL	HS
24	15	89	63	42	96	36	33	67	74	48	93	87	97	4	41	69	74	61	73	91	39

B 55 | Biltmore Donna 63L

DOB: 02-10-2023 Cow #*20649583 Tattoo: 63L
 #*Bar R Jet Black 5063 #*Connealy Black Granite
 #*LAR MAN IN BLACK #Bar R Iris Anita 0113
 19955191 #JMB Maxine TG 2131 #*Sitz Top Game 561X
 #*G A R Momentum #JMB Maxine Deluxe 9034
 #*BILTMORE DONNA 58H #*G A R Progress
 19843830 #Biltmore Donna 2D #G A R Big Eye 1770
 #TC Thunder 805
 Biltmore Donna 191A



\$AXH	+164	20%	\$AXJ	+150	25%																
CED	BW	WW	YW	DOC	HP	MILK	CEM	\$EN	HS												
+11	+1.6	+84	+143	+24	+15.0	+30	+11	-16	+72												
15%	60%	10%	15%	30%	20%	25%	25%	50%	85%												
CLAW	ANGLE	CW	MARB	RE	\$M	\$W	\$B	\$C													
+34	+45	+64	+1.19	+56	+98	+87	+170	+318													
5%	35%	25%	15%	65%	1%	2%	25%	10%													
CED	BW	WW	YW	DMI	YH	SC	DOC	HP	CEM	MLK	MW	MH	CW	MRB	RE	FAT	TND	PAP	CLW	ANGL	HS
54	85	8	12	98	21	9	24	26	67	26	36	26	7	12	37	99	26	26	1	18	90



Lot 55 - Biltmore Donna 63L

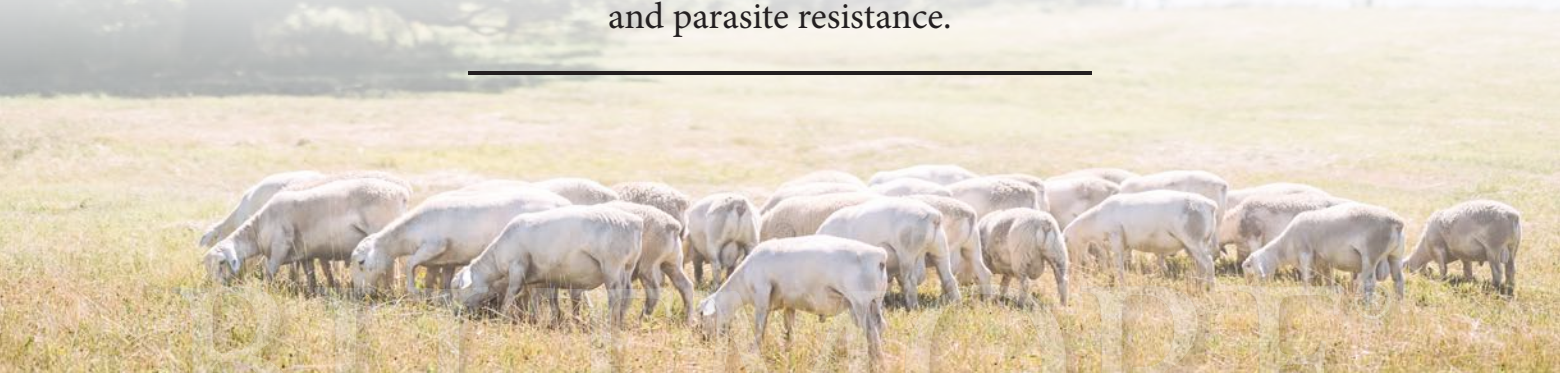
• Biltmore Donna 63L is a stout Man In Black daughter out of a Momentum daughter that has earned an MPPA of 101.43 with a 349-day calving interval and weaning 59.3% of her body weight. She offers double-digit calving ease, high growth, fertility, milk, a stout management profile, and top 15% marbling. She is AI'd to the popular Select Sires roster member, GAR Powercat!

- AI'd 4.23.24 to GAR Powercat, confirmed safe.
- Due 2.1.25



Biltmore Company
White Dorper
&
White Dorper Cross Sheep

Biltmore's sheep flock originated from 29 Dorset ewes purchased in the late 1990s. Over the past 20 years, we have shifted the foundation of our ewe flock to purebred White Dorper sheep. In the spring of 2020, we began incorporating genetics from top Katahdin rams in the southeast to our White Dorper ewe flock for increased meat quality and parasite resistance.



Sheep Glossary

PERFORMANCE DATA

- Breed:** Registered White Dorper sheep are registered in the Dorper Society herd book and are indicated as purebred, fullblood or percentage White Dorper as outlined in the White Dorper Society guidelines. Registered Katahdin sheep are registered with the Katahdin Hair Sheep Association. All registered sheep will be sold with valid registration certificates. Commercial Cross-breds (Unregistered Sheep) are all part White Dorper and part Katahdin sheep and are not registered with any herd book.
- Scrapie:** Genotype associated with genetic resistance to scrapie. Presence of at least one R is associated with scrapie resistance.
- Adj. WW:** Weaning weight adjusted to 90 days of age
- Scan Wt.:** Weight at carcass ultrasound scan
- ADG:** Average daily gain in pounds per day from weaning to scan
- Scrotal Cir.:** Actual scrotal circumference in cm measured during veterinary exam.
- Adj. Fat:** Ultrasound fat thickness measurement (in.) taken between the 12th and 13th ribs. Adjusted to a constant live weight of 125 pounds.
- Adj. LEA:** Ultrasound loin muscle area measurement (square in.) taken between the 12th and 13th ribs. Adjusted to a constant live weight of 125 pounds.

NSIP EBVS AND INDEXES

Weight EBVs

- Weaning Weight (WWT) EBV (kg) provides an estimate of preweaning growth potential and will likely receive positive selection emphasis in most flocks.
- Postweaning Weight (PWWT) EBV (kg) combines information on preweaning and postweaning growth to predict genetic merit for postweaning weight at 120 days.

Prolificacy EBVs

- Number of Lambs Born (NLB) EBV (percentage) evaluates genetic potential for prolificacy. This EBV is expressed as a % increase of lambs born per ewe lambing. Ewes with EBV of +10% for Number of Lambs Born are expected to have an average of 0.10 more lambs at each lambing than average ewes, and their daughters are expected to have an average of 0.05 more lambs at each lambing compared to daughters of average ewes. Selection on Number of Lambs Born EBV is expected to increase prolificacy in the flock.
- Number of Lambs Weaned (NLW) EBV (percentage) evaluates combined ewe effects on prolificacy and lamb survival to weaning. The NLW EBV is expressed as a % increase of lambs weaned per ewe lambing. Ewes with EBV of +10% for Number of Lambs Weaned are expected to wean an average of 0.10 more lambs at each lambing, than average ewes, and their daughters are expected to wean an average of 0.05 more lambs at each lambing compared to daughters of average ewes.

US Hair Index

- This index is a combination of WWT, MWWT, NLB and NLW. It assesses what the overall maternal merit is based on the EBVs to predict growth, milk, prolificacy and survivability. Selection for a higher Index will increase production and profit in most systems. Higher numbers indicate more productive sheep resulting in more total pounds to market.



Sheep Glossary

PERFORMANCE DATA

- Breed:** Registered White Dorper sheep are registered in the Dorper Society herd book and are indicated as purebred, fullblood or percentage White Dorper as outlined in the White Dorper Society guidelines. Registered Katahdin sheep are registered with the Katahdin Hair Sheep Association. All registered sheep will be sold with valid registration certificates. Commercial Cross-breds (Unregistered Sheep) are all part White Dorper and part Katahdin sheep and are not registered with any herd book.
- Scrapie:** Genotype associated with genetic resistance to scrapie. Presence of at least one R is associated with scrapie resistance.
- Adj. WW:** Weaning weight adjusted to 90 days of age
- Scan Wt.:** Weight at carcass ultrasound scan
- ADG:** Average daily gain in pounds per day from weaning to scan
- Scrotal Cir.:** Actual scrotal circumference in cm measured during veterinary exam August 8th.
- Adj. Fat:** Ultrasound fat thickness measurement (in.) taken between the 12th and 13th ribs. Adjusted to a constant live weight of 110 pounds.
- Adj. LEA:** Ultrasound loin muscle area measurement (square in.) taken between the 12th and 13th ribs. Adjusted to a constant live weight of 110 pounds.

NSIP EBVS AND INDEXES

Weight EBVs

- Weaning Weight (WWT) EBV (kg) provides an estimate of preweaning growth potential and will likely receive positive selection emphasis in most flocks.
- Postweaning Weight (PWWT) EBV (kg) combines information on preweaning and postweaning growth to predict genetic merit for postweaning weight at 120 days.

PROLIFICACY EBVS

- Number of Lambs Born (NLB) EBV (percentage) evaluates genetic potential for prolificacy. This EBV is expressed as a % increase of lambs born per ewe lambing. Ewes with EBV of +10% for Number of Lambs Born are expected to have an average of 0.10 more lambs at each lambing than average ewes, and their daughters are expected to have an average of 0.05 more lambs at each lambing compared to daughters of average ewes. Selection on Number of Lambs Born EBV is expected to increase prolificacy in the flock.
- Number of Lambs Weaned (NLW) EBV (percentage) evaluates combined ewe effects on prolificacy and lamb survival to weaning. The NLW EBV is expressed as a % increase of lambs weaned per ewe lambing. Ewes with EBV of +10% for Number of Lambs Weaned are expected to wean an average of 0.10 more lambs at each lambing, than average ewes, and their daughters are expected to wean an average of 0.05 more lambs at each lambing compared to daughters of average ewes.

US HAIR INDEX

- This index is a combination of WWT, MWWT, NLB and NLW. It assesses what the overall maternal merit is based on the EBVs to predict growth, milk, prolificacy and survivability. Selection for a higher Index will increase production and profit in most systems. Higher numbers indicate more productive sheep resulting in more total pounds to market.



Sheep Glossary

PERFORMANCE DATA

- Breed:** Registered White Dorper sheep are registered in the Dorper Society herd book and are indicated as purebred, fullblood or percentage White Dorper as outlined in the White Dorper Society guidelines. Registered Katahdin sheep are registered with the Katahdin Hair Sheep Association. All registered sheep will be sold with valid registration certificates. Commercial Cross-breds (Unregistered Sheep) are all part White Dorper and part Katahdin sheep and are not registered with any herd book.
- Scrapie:** Genotype associated with genetic resistance to scrapie. Presence of at least one R is associated with scrapie resistance.
- Adj. WW:** Weaning weight adjusted to 90 days of age
- Scan Wt.:** Weight at carcass ultrasound scan
- ADG:** Average daily gain in pounds per day from weaning to scan
- Scrotal Cir.:** Actual scrotal circumference in cm measured during veterinary exam August 8th.
- Adj. Fat:** Ultrasound fat thickness measurement (in.) taken between the 12th and 13th ribs. Adjusted to a constant live weight of 110 pounds.
- Adj. LEA:** Ultrasound loin muscle area measurement (square in.) taken between the 12th and 13th ribs. Adjusted to a constant live weight of 110 pounds.

NSIP EBVS AND INDEXES

Weight EBVs

- Weaning Weight (WWT) EBV (kg) provides an estimate of preweaning growth potential and will likely receive positive selection emphasis in most flocks.
- Postweaning Weight (PWWT) EBV (kg) combines information on preweaning and postweaning growth to predict genetic merit for postweaning weight at 120 days.

PROLIFICACY EBVS

- Number of Lambs Born (NLB) EBV (percentage) evaluates genetic potential for prolificacy. This EBV is expressed as a % increase of lambs born per ewe lambing. Ewes with EBV of +10% for Number of Lambs Born are expected to have an average of 0.10 more lambs at each lambing than average ewes, and their daughters are expected to have an average of 0.05 more lambs at each lambing compared to daughters of average ewes. Selection on Number of Lambs Born EBV is expected to increase prolificacy in the flock.
- Number of Lambs Weaned (NLW) EBV (percentage) evaluates combined ewe effects on prolificacy and lamb survival to weaning. The NLW EBV is expressed as a % increase of lambs weaned per ewe lambing. Ewes with EBV of +10% for Number of Lambs Weaned are expected to wean an average of 0.10 more lambs at each lambing, than average ewes, and their daughters are expected to wean an average of 0.05 more lambs at each lambing compared to daughters of average ewes.

US HAIR INDEX

- This index is a combination of WWT, MWWT, NLB and NLW. It assesses what the overall maternal merit is based on the EBVs to predict growth, milk, prolificacy and survivability. Selection for a higher Index will increase production and profit in most systems. Higher numbers indicate more productive sheep resulting in more total pounds to market.



Sheep Glossary

PERFORMANCE DATA

- Breed:** Registered White Dorper sheep are registered in the Dorper Society herd book and are indicated as purebred, fullblood or percentage White Dorper as outlined in the White Dorper Society guidelines. Registered Katahdin sheep are registered with the Katahdin Hair Sheep Association. All registered sheep will be sold with valid registration certificates. Commercial Cross-breds (Unregistered Sheep) are all part White Dorper and part Katahdin sheep and are not registered with any herd book.
- Scrapie:** Genotype associated with genetic resistance to scrapie. Presence of at least one R is associated with scrapie resistance.
- Adj. WW:** Weaning weight adjusted to 90 days of age
- Scan Wt.:** Weight at carcass ultrasound scan
- ADG:** Average daily gain in pounds per day from weaning to scan
- Scrotal Cir.:** Actual scrotal circumference in cm measured during veterinary exam August 8th.
- Adj. Fat:** Ultrasound fat thickness measurement (in.) taken between the 12th and 13th ribs. Adjusted to a constant live weight of 110 pounds.
- Adj. LEA:** Ultrasound loin muscle area measurement (square in.) taken between the 12th and 13th ribs. Adjusted to a constant live weight of 110 pounds.

NSIP EBVS AND INDEXES

Weight EBVs

- Weaning Weight (WWT) EBV (kg) provides an estimate of preweaning growth potential and will likely receive positive selection emphasis in most flocks.
- Postweaning Weight (PWWT) EBV (kg) combines information on preweaning and postweaning growth to predict genetic merit for postweaning weight at 120 days.

PROLIFICACY EBVS

- Number of Lambs Born (NLB) EBV (percentage) evaluates genetic potential for prolificacy. This EBV is expressed as a % increase of lambs born per ewe lambing. Ewes with EBV of +10% for Number of Lambs Born are expected to have an average of 0.10 more lambs at each lambing than average ewes, and their daughters are expected to have an average of 0.05 more lambs at each lambing compared to daughters of average ewes. Selection on Number of Lambs Born EBV is expected to increase prolificacy in the flock.
- Number of Lambs Weaned (NLW) EBV (percentage) evaluates combined ewe effects on prolificacy and lamb survival to weaning. The NLW EBV is expressed as a % increase of lambs weaned per ewe lambing. Ewes with EBV of +10% for Number of Lambs Weaned are expected to wean an average of 0.10 more lambs at each lambing, than average ewes, and their daughters are expected to wean an average of 0.05 more lambs at each lambing compared to daughters of average ewes.

US HAIR INDEX

- This index is a combination of WWT, MWWT, NLB and NLW. It assesses what the overall maternal merit is based on the EBVs to predict growth, milk, prolificacy and survivability. Selection for a higher Index will increase production and profit in most systems. Higher numbers indicate more productive sheep resulting in more total pounds to market.



Sheep Glossary

PERFORMANCE DATA

- Breed:** Registered White Dorper sheep are registered in the Dorper Society herd book and are indicated as purebred, fullblood or percentage White Dorper as outlined in the White Dorper Society guidelines. Registered Katahdin sheep are registered with the Katahdin Hair Sheep Association. All registered sheep will be sold with valid registration certificates. Commercial Cross-breds (Unregistered Sheep) are all part White Dorper and part Katahdin sheep and are not registered with any herd book.
- Scrapie:** Genotype associated with genetic resistance to scrapie. Presence of at least one R is associated with scrapie resistance.
- Adj. WW:** Weaning weight adjusted to 90 days of age
- Scan Wt.:** Weight at carcass ultrasound scan
- ADG:** Average daily gain in pounds per day from weaning to scan
- Scrotal Cir.:** Actual scrotal circumference in cm measured during veterinary exam August 8th.
- Adj. Fat:** Ultrasound fat thickness measurement (in.) taken between the 12th and 13th ribs. Adjusted to a constant live weight of 110 pounds.
- Adj. LEA:** Ultrasound loin muscle area measurement (square in.) taken between the 12th and 13th ribs. Adjusted to a constant live weight of 110 pounds.

NSIP EBVS AND INDEXES

Weight EBVs

- Weaning Weight (WWT) EBV (kg) provides an estimate of preweaning growth potential and will likely receive positive selection emphasis in most flocks.
- Postweaning Weight (PWWT) EBV (kg) combines information on preweaning and postweaning growth to predict genetic merit for postweaning weight at 120 days.

PROLIFICACY EBVS

- Number of Lambs Born (NLB) EBV (percentage) evaluates genetic potential for prolificacy. This EBV is expressed as a % increase of lambs born per ewe lambing. Ewes with EBV of +10% for Number of Lambs Born are expected to have an average of 0.10 more lambs at each lambing than average ewes, and their daughters are expected to have an average of 0.05 more lambs at each lambing compared to daughters of average ewes. Selection on Number of Lambs Born EBV is expected to increase prolificacy in the flock.
- Number of Lambs Weaned (NLW) EBV (percentage) evaluates combined ewe effects on prolificacy and lamb survival to weaning. The NLW EBV is expressed as a % increase of lambs weaned per ewe lambing. Ewes with EBV of +10% for Number of Lambs Weaned are expected to wean an average of 0.10 more lambs at each lambing, than average ewes, and their daughters are expected to wean an average of 0.05 more lambs at each lambing compared to daughters of average ewes.

US HAIR INDEX

- This index is a combination of WWT, MWWT, NLB and NLW. It assesses what the overall maternal merit is based on the EBVs to predict growth, milk, prolificacy and survivability. Selection for a higher Index will increase production and profit in most systems. Higher numbers indicate more productive sheep resulting in more total pounds to market.



Sheep Glossary

PERFORMANCE DATA

- Breed:** Registered White Dorper sheep are registered in the Dorper Society herd book and are indicated as purebred, fullblood or percentage White Dorper as outlined in the White Dorper Society guidelines. Registered Katahdin sheep are registered with the Katahdin Hair Sheep Association. All registered sheep will be sold with valid registration certificates. Commercial Cross-breds (Unregistered Sheep) are all part White Dorper and part Katahdin sheep and are not registered with any herd book.
- Scrapie:** Genotype associated with genetic resistance to scrapie. Presence of at least one R is associated with scrapie resistance.
- Adj. WW:** Weaning weight adjusted to 90 days of age
- Scan Wt.:** Weight at carcass ultrasound scan
- ADG:** Average daily gain in pounds per day from weaning to scan
- Scrotal Cir.:** Actual scrotal circumference in cm measured during veterinary exam August 8th.
- Adj. Fat:** Ultrasound fat thickness measurement (in.) taken between the 12th and 13th ribs. Adjusted to a constant live weight of 110 pounds.
- Adj. LEA:** Ultrasound loin muscle area measurement (square in.) taken between the 12th and 13th ribs. Adjusted to a constant live weight of 110 pounds.

NSIP EBVS AND INDEXES

Weight EBVs

- Weaning Weight (WWT) EBV (kg) provides an estimate of preweaning growth potential and will likely receive positive selection emphasis in most flocks.
- Postweaning Weight (PWWT) EBV (kg) combines information on preweaning and postweaning growth to predict genetic merit for postweaning weight at 120 days.

PROLIFICACY EBVS

- Number of Lambs Born (NLB) EBV (percentage) evaluates genetic potential for prolificacy. This EBV is expressed as a % increase of lambs born per ewe lambing. Ewes with EBV of +10% for Number of Lambs Born are expected to have an average of 0.10 more lambs at each lambing than average ewes, and their daughters are expected to have an average of 0.05 more lambs at each lambing compared to daughters of average ewes. Selection on Number of Lambs Born EBV is expected to increase prolificacy in the flock.
- Number of Lambs Weaned (NLW) EBV (percentage) evaluates combined ewe effects on prolificacy and lamb survival to weaning. The NLW EBV is expressed as a % increase of lambs weaned per ewe lambing. Ewes with EBV of +10% for Number of Lambs Weaned are expected to wean an average of 0.10 more lambs at each lambing, than average ewes, and their daughters are expected to wean an average of 0.05 more lambs at each lambing compared to daughters of average ewes.

US HAIR INDEX

- This index is a combination of WWT, MWWT, NLB and NLW. It assesses what the overall maternal merit is based on the EBVs to predict growth, milk, prolificacy and survivability. Selection for a higher Index will increase production and profit in most systems. Higher numbers indicate more productive sheep resulting in more total pounds to market.



Sheep Glossary

PERFORMANCE DATA

- Breed:** Registered White Dorper sheep are registered in the Dorper Society herd book and are indicated as purebred, fullblood or percentage White Dorper as outlined in the White Dorper Society guidelines. Registered Katahdin sheep are registered with the Katahdin Hair Sheep Association. All registered sheep will be sold with valid registration certificates. Commercial Cross-breds (Unregistered Sheep) are all part White Dorper and part Katahdin sheep and are not registered with any herd book.
- Scrapie:** Genotype associated with genetic resistance to scrapie. Presence of at least one R is associated with scrapie resistance.
- Adj. WW:** Weaning weight adjusted to 90 days of age
- Scan Wt.:** Weight at carcass ultrasound scan
- ADG:** Average daily gain in pounds per day from weaning to scan
- Scrotal Cir.:** Actual scrotal circumference in cm measured during veterinary exam August 8th.
- Adj. Fat:** Ultrasound fat thickness measurement (in.) taken between the 12th and 13th ribs. Adjusted to a constant live weight of 110 pounds.
- Adj. LEA:** Ultrasound loin muscle area measurement (square in.) taken between the 12th and 13th ribs. Adjusted to a constant live weight of 110 pounds.

NSIP EBVS AND INDEXES

Weight EBVs

- Weaning Weight (WWT) EBV (kg) provides an estimate of preweaning growth potential and will likely receive positive selection emphasis in most flocks.
- Postweaning Weight (PWWT) EBV (kg) combines information on preweaning and postweaning growth to predict genetic merit for postweaning weight at 120 days.

PROLIFICACY EBVS

- Number of Lambs Born (NLB) EBV (percentage) evaluates genetic potential for prolificacy. This EBV is expressed as a % increase of lambs born per ewe lambing. Ewes with EBV of +10% for Number of Lambs Born are expected to have an average of 0.10 more lambs at each lambing than average ewes, and their daughters are expected to have an average of 0.05 more lambs at each lambing compared to daughters of average ewes. Selection on Number of Lambs Born EBV is expected to increase prolificacy in the flock.
- Number of Lambs Weaned (NLW) EBV (percentage) evaluates combined ewe effects on prolificacy and lamb survival to weaning. The NLW EBV is expressed as a % increase of lambs weaned per ewe lambing. Ewes with EBV of +10% for Number of Lambs Weaned are expected to wean an average of 0.10 more lambs at each lambing, than average ewes, and their daughters are expected to wean an average of 0.05 more lambs at each lambing compared to daughters of average ewes.

US HAIR INDEX

- This index is a combination of WWT, MWWT, NLB and NLW. It assesses what the overall maternal merit is based on the EBVs to predict growth, milk, prolificacy and survivability. Selection for a higher Index will increase production and profit in most systems. Higher numbers indicate more productive sheep resulting in more total pounds to market.



Sheep Glossary

PERFORMANCE DATA

- Breed:** Registered White Dorper sheep are registered in the Dorper Society herd book and are indicated as purebred, fullblood or percentage White Dorper as outlined in the White Dorper Society guidelines. Registered Katahdin sheep are registered with the Katahdin Hair Sheep Association. All registered sheep will be sold with valid registration certificates. Commercial Cross-breds (Unregistered Sheep) are all part White Dorper and part Katahdin sheep and are not registered with any herd book.
- Scrapie:** Genotype associated with genetic resistance to scrapie. Presence of at least one R is associated with scrapie resistance.
- Adj. WW:** Weaning weight adjusted to 90 days of age
- Scan Wt.:** Weight at carcass ultrasound scan
- ADG:** Average daily gain in pounds per day from weaning to scan
- Scrotal Cir.:** Actual scrotal circumference in cm measured during veterinary exam August 8th.
- Adj. Fat:** Ultrasound fat thickness measurement (in.) taken between the 12th and 13th ribs. Adjusted to a constant live weight of 110 pounds.
- Adj. LEA:** Ultrasound loin muscle area measurement (square in.) taken between the 12th and 13th ribs. Adjusted to a constant live weight of 110 pounds.

NSIP EBVS AND INDEXES

Weight EBVs

- Weaning Weight (WWT) EBV (kg) provides an estimate of preweaning growth potential and will likely receive positive selection emphasis in most flocks.
- Postweaning Weight (PWWT) EBV (kg) combines information on preweaning and postweaning growth to predict genetic merit for postweaning weight at 120 days.

PROLIFICACY EBVS

- Number of Lambs Born (NLB) EBV (percentage) evaluates genetic potential for prolificacy. This EBV is expressed as a % increase of lambs born per ewe lambing. Ewes with EBV of +10% for Number of Lambs Born are expected to have an average of 0.10 more lambs at each lambing than average ewes, and their daughters are expected to have an average of 0.05 more lambs at each lambing compared to daughters of average ewes. Selection on Number of Lambs Born EBV is expected to increase prolificacy in the flock.
- Number of Lambs Weaned (NLW) EBV (percentage) evaluates combined ewe effects on prolificacy and lamb survival to weaning. The NLW EBV is expressed as a % increase of lambs weaned per ewe lambing. Ewes with EBV of +10% for Number of Lambs Weaned are expected to wean an average of 0.10 more lambs at each lambing, than average ewes, and their daughters are expected to wean an average of 0.05 more lambs at each lambing compared to daughters of average ewes.

US HAIR INDEX

- This index is a combination of WWT, MWWT, NLB and NLW. It assesses what the overall maternal merit is based on the EBVs to predict growth, milk, prolificacy and survivability. Selection for a higher Index will increase production and profit in most systems. Higher numbers indicate more productive sheep resulting in more total pounds to market.



Sheep Glossary

PERFORMANCE DATA

- Breed:** Registered White Dorper sheep are registered in the Dorper Society herd book and are indicated as purebred, fullblood or percentage White Dorper as outlined in the White Dorper Society guidelines. Registered Katahdin sheep are registered with the Katahdin Hair Sheep Association. All registered sheep will be sold with valid registration certificates. Commercial Cross-breds (Unregistered Sheep) are all part White Dorper and part Katahdin sheep and are not registered with any herd book.
- Scrapie:** Genotype associated with genetic resistance to scrapie. Presence of at least one R is associated with scrapie resistance.
- Adj. WW:** Weaning weight adjusted to 90 days of age
- Scan Wt.:** Weight at carcass ultrasound scan
- ADG:** Average daily gain in pounds per day from weaning to scan
- Scrotal Cir.:** Actual scrotal circumference in cm measured during veterinary exam August 8th.
- Adj. Fat:** Ultrasound fat thickness measurement (in.) taken between the 12th and 13th ribs. Adjusted to a constant live weight of 110 pounds.
- Adj. LEA:** Ultrasound loin muscle area measurement (square in.) taken between the 12th and 13th ribs. Adjusted to a constant live weight of 110 pounds.

NSIP EBVS AND INDEXES

Weight EBVs

- Weaning Weight (WWT) EBV (kg) provides an estimate of preweaning growth potential and will likely receive positive selection emphasis in most flocks.
- Postweaning Weight (PWWT) EBV (kg) combines information on preweaning and postweaning growth to predict genetic merit for postweaning weight at 120 days.

PROLIFICACY EBVS

- Number of Lambs Born (NLB) EBV (percentage) evaluates genetic potential for prolificacy. This EBV is expressed as a % increase of lambs born per ewe lambing. Ewes with EBV of +10% for Number of Lambs Born are expected to have an average of 0.10 more lambs at each lambing than average ewes, and their daughters are expected to have an average of 0.05 more lambs at each lambing compared to daughters of average ewes. Selection on Number of Lambs Born EBV is expected to increase prolificacy in the flock.
- Number of Lambs Weaned (NLW) EBV (percentage) evaluates combined ewe effects on prolificacy and lamb survival to weaning. The NLW EBV is expressed as a % increase of lambs weaned per ewe lambing. Ewes with EBV of +10% for Number of Lambs Weaned are expected to wean an average of 0.10 more lambs at each lambing, than average ewes, and their daughters are expected to wean an average of 0.05 more lambs at each lambing compared to daughters of average ewes.

US HAIR INDEX

- This index is a combination of WWT, MWWT, NLB and NLW. It assesses what the overall maternal merit is based on the EBVs to predict growth, milk, prolificacy and survivability. Selection for a higher Index will increase production and profit in most systems. Higher numbers indicate more productive sheep resulting in more total pounds to market.



Explanation of EPDs

Expected Progeny Difference (EPD), is the prediction of how future progeny of each animal are expected to perform relative to the progeny of other animals listed in the database. EPDs are expressed in units of measure for the trait, plus or minus. Interim EPDs may appear on young animals when their performance has yet to be incorporated into the American Angus Association National Cattle Evaluation (NCE) procedures. This EPD will be preceded by an "I", and may or may not include the animal's own performance record for a particular trait, depending on its availability, appropriate contemporary grouping, or data edits needed for NCE.

Expected Progeny Difference (EPD), is the prediction of how future progeny of each animal are expected to perform relative to the progeny of other animals listed in the database. EPDs are expressed in units of measure for the trait, plus or minus. Interim EPDs may appear on young animals when their performance has yet to be incorporated into the American Angus Association National Cattle Evaluation (NCE) procedures. This EPD will be preceded by an "I", and may or may not include the animal's own performance record for a particular trait, depending on its availability, appropriate contemporary grouping, or data edits needed for NCE.

PRODUCTION EPDs

Calving Ease Direct (CED), is expressed as a difference in percentage of unassisted births, with a higher value indicating greater calving ease in first-calf heifers. It predicts the average difference in ease with which a sire's calves will be born when he is bred to first-calf heifers.

Birth Weight EPD (BW), expressed in pounds, is a predictor of a sire's ability to transmit birth weight to his progeny compared to that of other sires.

Weaning Weight EPD (WW), expressed in pounds, is a predictor of a sire's ability to transmit weaning growth to his progeny compared to that of other sires.

Yearling Weight EPD (YW), expressed in pounds, is a predictor of a sire's ability to transmit yearling growth to his progeny compared to that of other sires.

MATERNAL EPDs

Heifer Pregnancy (HP), is a selection tool to increase the probability or chance of a sire's daughters becoming pregnant as first-calf heifers during a normal breeding season. A higher EPD is the more favorable direction and the EPD is reported in percentage units.

Calving Ease Maternal (CEM), is expressed as a difference in percentage of unassisted births with a higher value indicating greater calving ease in first-calf daughters. It predicts the average ease with which a sire's daughters will calve as first-calf heifers when compared to daughters of other sires.

Maternal Milk EPD (Milk), is a predictor of a sire's genetic merit for milk and mothering ability as expressed in his daughters compared to daughters of other sires. In other words, it is that part of a calf's weaning weight attributed to milk and mothering ability.

MANAGEMENT EPDs

Dockility (Doc), is expressed as a difference in yearling cattle temperament, with a higher value indicating more favorable dockility. It predicts the average difference of progeny from a sire in comparison with another sire's calves. In herds where temperament problems are not an issue, this expected difference would not be realized.

Claw Set EPD (Claw), is expressed in units of claw-set score, with a lower EPD being more favorable indicating a sire will produce progeny with more ideal claw set. The ideal claw set is toes that are symmetrical, even and appropriately spaced.

Foot Angle EPD (Angle), is expressed in units of foot-angle score, with a lower EPD being more favorable indicating a sire will produce progeny with more ideal foot angle. The ideal is a 45-degree angle at the pastern joint with appropriate toe length and heel depth.

CARCASS EPDs

Carcass Weight EPD (CW), expressed in pounds is a predictor of the differences in hot carcass weight of a sire's progeny compared to progeny of other sires.

Marbling EPD (Marb), expressed as a fraction of the difference in USDA marbling score of a sire's progeny compared to progeny of other sires.

Ribeye Area EPD (RE), expressed in square inches, is a predictor of the difference in ribeye area of a sire's progeny compared to progeny of other sires.

Fat Thickness EPD (Fat), expressed in inches, is a predictor of the differences in external fat thickness at the 12th rib (as measured between the 12th and 13th ribs) of a sire's progeny compared to progeny of other sires.

ANGUS-ON-DAIRY \$VALUE INDEXES

Angus-On-Dairy \$Value Indexes are bioeconomic selection indexes that allow multiple change in several different traits at once pertaining to a dairy-beef crossbreeding objective. These values are terminal crossbreeding indexes to estimate of how future beef-on-dairy progeny of each Angus sire are expected to perform, on average, compared to beef-on-dairy progeny of other Angus sires if the sires were randomly mated and beef-on-dairy calves were exposed to the same environment.

These indexes were designed as specific crossbreeding tools for Angus bulls being mated to dairy cows. Two indexes have been developed for the dairy market:

Angus-On-Holstein (\$AxH), a terminal index, expressed in dollars per head, to predict profitability differences in progeny due to genetic traits weighted by appropriated economics of each Angus sire when mated to Holstein females. The underlying breeding objective assumes Angus bulls will be mated to Holstein females to produce Angus-dairy crossbred calves to be fed and marketed on a quality-based grid. Traits included are as follows: calving ease, growth from birth through the feeding phase, feed intake, dressing percent, yield grade, quality grade, muscling, and height.

Angus-On-Jersey (\$AxJ), a terminal index, expressed in dollars per head, to predict profitability differences in progeny due to genetic traits weight by appropriated economics of each Angus sire when mated to Jersey females. The underlying breeding objective assumes Angus bulls will be mated to Jersey females to produce Angus-dairy crossbred calves to be fed and marketed on a quality-based grid. Traits included are as follows: calving ease, growth from birth through the feeding phase, feed intake, dressing percent, yield grade, quality grade, and muscling.

\$VALUE INDEXES

\$Value indexes, an economic selection index allows multiple change in several different traits at once pertaining to a specific breeding objective. The \$Value is an estimate of how future progeny of each sire are expected to perform, on average, compared to progeny of other sires if the sires were randomly mated to cows and if calves were exposed to the same environment.

Maternal Weaned Calf Value (\$M), an index, expressed in dollars per head, predicts profitability differences from conception to weaning with the underlying breeding objective assuming that individuals retain their own replacement females within herd and sell the rest of the cull female and all male progeny as feeder calves. The model assumes commercial producers will replace 25% of their breeding females in the first generation and 20% of their breeding females in each subsequent generation. Traits included are as follows: calving ease direct, calving ease maternal, weaning weight, milk, heifer pregnancy, dockility, mature cow weight, claw set and foot angle.

Weaned Calf Value (\$W), an index, expressed in dollars per head, to predict profitability differences in progeny due to genetics from birth to weaning. The underlying objective being producers will retain 20% of the female progeny as replacements and sell the rest of the cull females and their male counterparts as feeder calves. Traits included are as follows (in no particular order): birth weight, weaning weight, milk, and mature cow weight.

Beef Value (\$B), a terminal index, expressed in dollars per carcass, to predict profitability differences in progeny due to genetics for postweaning and carcass traits. This terminal index assumes commercial producers wean all male and female progeny, retain ownership of these animals through the feedlot phase and market these animals on a carcass grid. Traits included in the index are as follows: yearling weight, dry-matter intake, marbling, carcass weight, ribeye area and fat.

Combined Value (\$C), an index, expressed in dollars per head, which includes all traits that make up both Maternal Weaned Calf Value (\$M) and Beef Value (\$B) with the objective that commercial producers will replace 20% of their breeding females per year with replacement heifers retained within their own herd. The remaining cull heifer and steer progeny are then assumed to be sent to the feedlot where the producers retain ownership of those cattle and sell them on a quality-based carcass merit grid. Expected progeny differences (EPDs) directly influencing a combined index: calving ease direct (CED) and maternal (CEM), weaning weight (WW), yearling weight (YW), maternal milk (Milk), heifer pregnancy (HP), dockility (DOC), mature cow weight (MW), foot angle (Angle), claw set (Claw), dry matter intake (DMI), marbling (Marb), carcass weight (CW), ribeye area (RE) and fat thickness (Fat).



BILTMOREWINES.COM

Savor our story

HANDCRAFTED SINCE 1985

With the finest grapes from our family estate and partner vineyards across the nation, we create award-winning wines that reflect our long legacy of gracious hospitality. Visit our winery, find us online, and share the best of Biltmore at your table.

BILTMORE[®]
Wines



Join CCI.live Online for the Sale!

*The best, the fastest and most comprehensive
online marketing & bidding tool!*

BUYERS NOTE, you do not need an account or to login to watch the sale but you must have a validated account to bid.

Viewed Around the World!

**SALE CATALOG, VIDEOS,
and LIVE BROADCAST...**

all at your fingertips from the sale page
at www.CCI.live! Watch sales live weekly!



www.CCI.live

(405) 400-9505 Text or Call - schedule@cci.live
Find us on the App Store and Google Play
Over 35 years in livestock marketing!

BILTMORE.COM/JOIN



Discover more Biltmore as a *Passholder!*

*Y*our Biltmore Annual Pass includes much more than a year of free visits—it's your key to experiencing George Vanderbilt's historic Blue Ridge Mountain estate at your own pace.

Return as often as you like to experience America's Largest Home® with its spectacular gardens, plus our welcoming winery, delightful shopping and dining options, exciting outdoor activities, and more. Your Pass unlocks exclusive benefits that we reserve just for Passholders.

BILTMORE®



©2024 The Biltmore Company

BILTMORE®

*1 Approach Road
Asheville, NC 28803*

PRSR
FIRST-CLASS
U.S. POSTAGE
PAID
St. Joseph, MO
Permit #2017



BILTMORE®

Angus Cattle & Dorper Sheep

FRIDAY, NOVEMBER 22ND 2024 AT
7 P.M. ONLINE ON CCI.LIVE



Supplement

B50A | Biltmore Kindred 117M

DOB: 08-21-2024 Bull *21044964 Tattoo: 117M
 *GB Fireball 672 *G A R Sure Fire 6404
 *K A KINDRED *GB Anticipation 432
 20446645 *K A Miss High Weigh 862 *E W A High Weigh 3123
 K A Miss Discovery 5163
 #+*G A R Ashland
 *G A R Home Town *Chair Rock Sure Fire 6095
 *BILTMORE BLACKCAP 130K #*Baldrige Waylon W34
 20586126 +*Biltmore Blackcap 144H BoBo Blackcap 1501



ACT. BW
56
ADJ. 205
ADJ. 365
ADJ. %IMF
ADJ. UREA

\$AXH	+252	1%	\$AXJ	+211	4%																
CED	BW	WW	YW	SC	DOC	HP	MILK	CEM	SEN	HS											
+18	-3.1	+67	+129	+7.5	+22	+16.9	+24	+13	-21	+32											
7%	1%	50%	30%	60%	40%	10%	70%	10%	65%	20%											
CLAW	ANGLE	CW	MARB	RE	FAT	SM	SW	SB	SC												
+6.3	+4.6	+50	+1.58	+9.1	+0.01	+68	+65	+209	+339												
95%	40%	60%	3%	25%	30%	40%	40%	4%	4%												
Dam's Production			Avg. Calving Interval			Avg. Act. BW			1-56	BWR	1-91	WWR	YWR								
CED	BW	WW	YW	DMI	YH	SC	DOC	HP	CEM	MLK	MW	MH	CW	MRB	RE	FAT	TND	PAP	CLW	ANGL	HS
2	2	66	17	23	99	40	41	10	72	56	47	80	69	2	19	25	93	50	84	30	14

B53A | Biltmore Rita 118M

DOB: 08-25-2024 Cow *21044962 Tattoo: 118M
 *GB Fireball 672 *G A R Sure Fire 6404
 *K A KINDRED *GB Anticipation 432
 20446645 *K A Miss High Weigh 862 *E W A High Weigh 3123
 K A Miss Discovery 5163
 #+*G A R Ashland
 *G A R Home Town *Chair Rock Sure Fire 6095
 *BILTMORE RITA 136K #+*TEX Playbook 5437
 20610153 +*Deer Valley Rita 8635 *Deer Valley Rita 5646



\$AXH	+198	10%	\$AXJ	+165	20%																
CED	BW	WW	YW	DOC	HP	MILK	CEM	SEN	HS												
+12	+9	+72	+122	+26	+13.3	+22	+17	-6	+24												
10%	40%	30%	40%	20%	40%	80%	7%	25%	10%												
CLAW	ANGLE	CW	MARB	RE	SM	SW	SB	SC													
+4.9	+3.3	+58	+1.16	+8.5	+90	+71	+191	+338													
50%	2%	40%	20%	30%	3%	25%	15%	4%													
CED	BW	WW	YW	DMI	YH	SC	DOC	HP	CEM	MLK	MW	MH	CW	MRB	RE	FAT	TND	PAP	CLW	ANGL	HS
8	24	55	63	47	79	85	16	32	3	69	78	71	50	11	20	7	80	30	42	2	10

YEARLINGS				
Lot	Herd ID	Ribeye Adj	Pct IMF Adj	Yearling Wt Adj
28	207L	12.3	4.27	1143
29	179L	13.2	4.2	1290
30	174L	14.5	3.55	1254
31	L413	12.5	3.72	1098
32	L415	13.3	3.23	1136
33	147L	13	4.41	1131
34	140L	15	4.6	1303
35	166L	13.8	3.78	1200
36	170L	12.6	4.61	1276
37	176L	13.2	3.34	1312
38	152L	13.6	3.57	1339
39	168L	13.2	3.81	1151
40	167L	14.1	4.02	1286
41	157L	12.1	4.85	1339
43A	182L	13.3	5.93	897
43B	144L	11.9	6.42	1008
44A	L402	13.6	6.08	1159
44B	L408	11.6	6.16	992

EWE LAMBING					
ID	Lamb Date	Lambs Sire	Lamb data	Registration Status	
L1	67L	9/15/24	Coyote Creek Farms 2176 RF164343	182M (Ram) 10 lbs.	Registerable
L2	45L	Heavy bred as of 9/27/24			
L3	64L	Heavy bred as of 9/27/24			
M1	67H	9/1/24	Biltmore Company 15L	116M (Ewe) 7.2 lbs. and 117M (Ram) 9.2 lbs.	Not Registerable
M2	68H	9/3/24	Biltmore Company 15L	125M (Ram) 8.2 lbs. and 126M (Ram) 8.6 lbs.	Not Registerable
M3	137H	8/22/24	Biltmore Company 15L	93M (Ram) 11lbs. and 94M (Ewe) 7lbs.	Not Registerable

EWE PREG STATUS	
RAM 2176 BREEDING 8/8/24-9/23/24	
N1	Pregnancy status to be announced from sale block
N2	Pregnancy status to be announced from sale block
N3	Pregnancy status to be announced from sale block
P1	Pregnancy status to be announced from sale block
P2	Pregnancy status to be announced from sale block
P3	Pregnancy status to be announced from sale block

SPRING RAM CARCASS DATA				
Lot	Herd ID	Scan Weight	Adj Fat	Adj Loin Eye Area (LEA)
D	21M	116	0.16	1.89
E	1M	118	0.16	2.14
F	24MM	120	0.21	2.04
G	11M	102	0.24	1.87
H	43M	110	0.25	1.84
J	55M	90	0.21	2.48
K	74M	100	0.22	2.52