



SUNDAY, OCTOBER 26, 2025 . 5 P.M.

**SALE**  
SCHEDULE

**SATURDAY, OCTOBER 25, 2025**

CATTLE ON DISPLAY – ALL DAY

*Refreshments available*

**SUNDAY, OCTOBER 26, 2025**

CATTLE ON DISPLAY – 9 AM

*Refreshments available*

DINNER SERVED – 4 PM

LAFRENTZ CATTLE ELITE FEMALE SALE – 5 PM



**SALE LOCATION**

354762 E 990 Road >>> Prague, Oklahoma 74864

# WELCOME

Two and half years ago, we made the decision to move to Oklahoma, and while it has presented us with challenges and learning curves, it has been a time of growth, reflection, and realization. We have grown as individuals and a couple, and as we reflect on our short two and half years here, we have realized that the connections and friendships we have made are a vital part of our story. Whether it is consigning cattle to our sales, buying cattle from us, or coming down for a weekend to help out, the relationships we have built in this industry are the reason we are able to be here today. There would never be an adequate or sufficient way for us to express our gratitude for the friends, family, partners, etc. that have played a part in this. So for now, we thank you from the bottom of our hearts.

On to the cattle... Our excitement about this set of females is unprecedented. We are so proud of what they represent. While they are being sold as "show heifers" we have put a ton of emphasis on cow families, pedigrees, foot quality, soundness, muscle, and practical breeding value. This will be the third year hosting our heifer sale in Oklahoma. To have 19 of the 44 heifers with a LFTZ/Lafrentz prefix, many of which were born here, is something we are very excited about. With this in mind, we decided that if we were ever going to have a live sale, this would be the year to do it. While changes like this can be uncomfortable and a little scary, we could not be more pumped about the idea of hosting our first ever live sale with CCI.Live. Thank you to the team at Innovation AgMarketing, LLC for all that you have done to help us pull this off!

As we mentioned before, the relationships we've formed in this industry are so important to us. The juniors and the families we have worked with the last couple of years have turned into just that, family! We are so happy to continue working with those families and are thrilled about the prospect of the new ones that will join us this year.

This would incomplete if we did not end with a THANK YOU. Thank you to our parents for showing us unwavering support throughout every step of our move, transition, and journey. Thank you to each one of our friends that have come to help us picture, wash, build fence, and everything in between. And a special thank you to Gracin Jones and Brandon Pacheco for giving us every spare minute they have to work on these sale heifers. None of this would have been possible without each of you.

We hope you can join us in Prague on October 26th for an evening of fellowship, good company, and of course... a taco truck! Do not hesitate to reach out if you have questions about the cattle. We appreciate your support and interest!

*Cody & Shayne Lafrentz*





# WELCOME

It is with great pleasure that we welcome you to the Inaugural Live Event at Lafrentz Cattle in Prague, Oklahoma. Cody and Shayne Lafrentz are no strangers to success, as they represent two powerful families in the industry from Canada and the United States collectively, the power couple has amassed more champions in both countries than any other couple in the business. When it comes to marketing, they don't pull up short in that area either as they know and understand the demands and expectations for customer service as well. We promise that when you invest in Prague, Oklahoma, no expense or obstacle will be in the way of your investment being given every opportunity to succeed and generate returns after the tanbark.

The couple would have experienced success in the Simmental, Angus, and Hereford breeds in their youth and have embarked on a multi-breed venture to generate for the young family. They both believe in quality over quantity and prefer to work with people who share this same ethos. Cody and Shayne have bred or hand selected these cattle to ensure a high-quality offering with depth and potential regardless of breed affiliation. As the young brand grows, the stock will only get better and deeper with each breeding season. Cody's eye for quality is exceptional, and his word is as solid and true as any of his generation in this business. Integrity is first and foremost for the young couple, and that commitment will never waver!

As the industry demands continue to evolve, good cattle will always be valued. Cattle that can produce and perform beyond their show careers are becoming rare, but at Lafrentz Cattle, it's a way of life and a livelihood. They focus on only the best, both in appearance and productivity. As they grow their cow herd and expand their operation, they have partnered with some of the very best in the business. Their partners share the same goals and conduct their lives with the "Golden Rule" at the forefront, just like Cody and Shayne do daily.

If you haven't visited Cody and Shayne's place, we strongly encourage you to do so. We are confident that you will be impressed by the stock as well as the people representing them. This show cattle industry changes frequently, and you want to work with a team that is always willing to rise to the occasion and face challenges head-on, and Team Lafrentz is that team. Folks, if you need any assistance with sight unseen purchases or want additional information about the offering, please reach out to any member of the Innovation AgMarketing team, as we are here to help in every way.

*Graham Bagg* >>> *Tim Anderson* >>> *Jered Shipman*

**SALE DAY CONTACTS**

CODY LAFRENTZ, 620.960.9831  
 SHAYNE LAFRENTZ, 530.237.6281  
 RILEY LAFRENTZ, 306.461.8200  
 VERN LAFRENTZ, 306.421.2297  
 DENISE LAFRENTZ, 306.471.7015  
 STEPHANIE MYERS, 530.237.6282

**SALE MANAGEMENT**

INNOVATION AG MARKETING, LLC  
 GRAHAM BLAGG, 530.913.6418  
 JERED SHIPMAN, 806.983.7226  
 TIM ANDERSON, 605.682.9343

**AUCTIONEER**

JERED SHIPMAN, 806.983.7226

**SALE STAFF**

MITCHELL ARMITAGE, SPECIAL ASSIGNMENT, 405.641.9438  
 JESSE BOLIN, SPECIAL ASSIGNMENT, 417.830.2835  
 WYATT DURST, CCI.LIVE, 785.541.0904  
 KYLE LEMMON, SC ONLINE SALES, 443.821.5069

**PHOTOGRAPHY**

KATIE EDWARDS, 817.901.7302

**TERMS & CONDITIONS**

The terms of the sale are cash or good check payable immediately upon the conclusion of the sale before animals will be transferred or removed from the sale facility. Cattle sell under the standard terms of their respective breed association. All sales are final, and the cattle will become the property of the buyer when the auctioneer says "SOLD". All females are sold as sound breeders. Seller guarantees each female to produce a live calf or transferrable embryos.

**REGISTRATION PAPERS**

Registration papers will be transferred upon completion of payment for purchases. Please let the clerk know at the time of settlement how you wish to have your purchase(s) transferred. If you need your registration paper transfers expedited, please make plans to make settlement the night of the sale.

**SALE ORDER**

A sale order will be posted prior to the sale. Cattle will NOT sell in catalog order.

**SUPPLEMENTAL INFORMATION**

A supplement sheet and sale order will be available with up-to-date information the day prior to the sale. All announcements made on the sale block as well as updates to the supplement sheet will take precedence over material listed in this catalog.

**HERD HEALTH**

All of the cattle selling will be ready for immediate shipment and accompanied by proper health certificates. Lafrentz Cattle has a full vaccination program.

**LIABILITY**

All persons who attend the sale do so at their own risk, legal or otherwise, for their safety or for behavior of the animals. Lafrentz Cattle, the sale management firm, and the sale staff assume no liability for property loss or any accident that may occur.

**LOAD OUT & TRUCKING**

Load out will begin at the conclusion of the sale. We ask that you pick up your purchases within a reasonable time. We are happy to assist you with reliable and affordable trucking arrangements. However, we assume no responsibility for trucking rates.

**LODGING****HAMPTON INN & SUITES**

915 ADA WEBB DR  
 STROUD, OK 74079  
 918.987.0144

**AIR TRAVEL**

WILL ROGERS INTERNATIONAL AIRPORT, 62 MILES  
 TULSA INTERNATIONAL AIRPORT, 77 MILES

**INSURANCE**

All cattle sold will become the responsibility of the buyer as soon as they are sold. To properly insure your investments, please contact Shayne Lafrentz at 530.237.6281.



## Join CCI.live Online for the Sale!

The best, the fastest and most comprehensive  
online marketing & bidding tool!

BUYERS NOTE, you do not need an account or to login to watch the sale but you must have a validated account to bid.

Viewed Around the World!

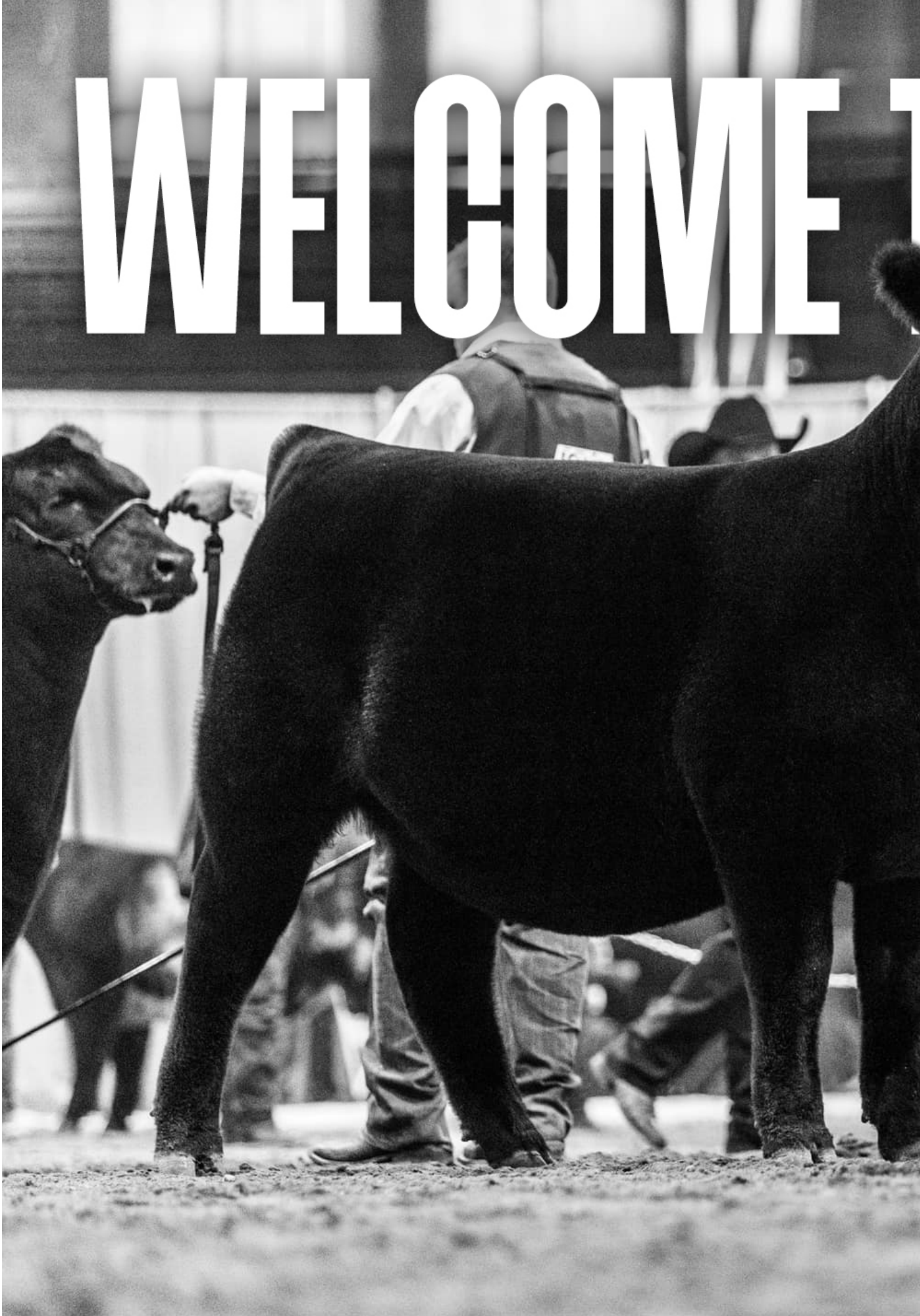
SALE CATALOG, VIDEOS,  
and LIVE BROADCAST...  
all at your fingertips from the sale page  
at www.CCI.live! Watch sales live weekly!



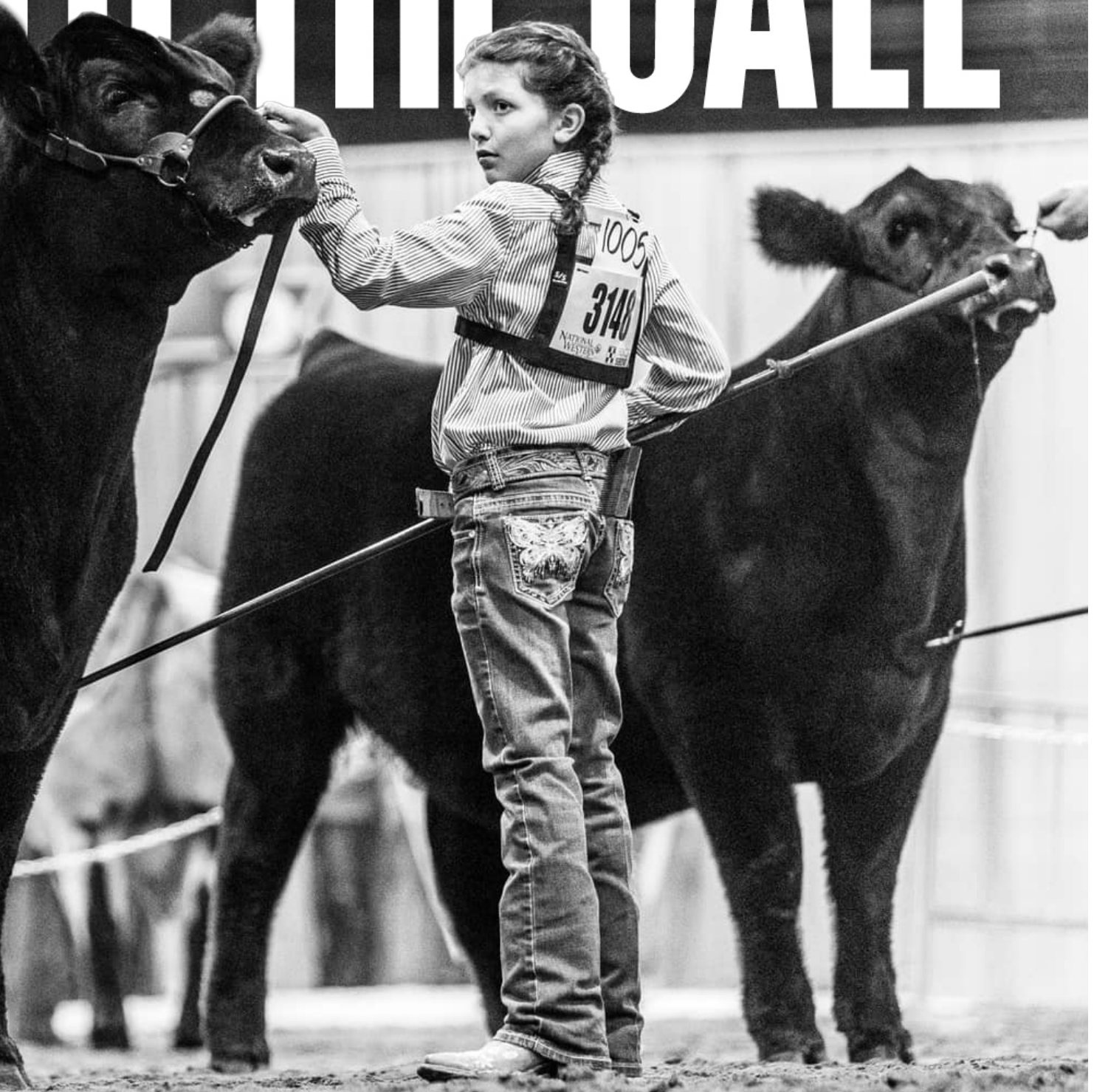


www.CCI.live  
(405) 400-9505 Text or Call - schedule@cci.live  
Find us on the App Store and Google Play  
Over 35 years in livestock marketing!

# WELCOME T



# TO THE SALE



**BREED**  
ANGUS



1

## LAFRENTZ LIZZO 507

AAA 21344164 >>> DOB 1/15/25 >>> TATTOO 507 >>> BREED ANGUS

PVF INSIGHT 0129

COLBURN PRIMO 5153

**BNWZ DIGNITY 8017**

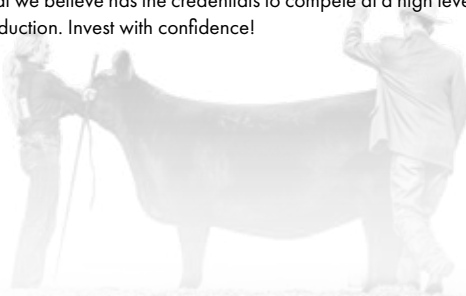


**K&J PROVEN QUEEN 259 "LIZZO"**

CCC SARA'S DREAM 5116

PVF PROVEN QUEEN 5250

- We initiate the Lafrentz Cattle Company 2025 Female Sale with a pair of ET flushmate sisters that are supported by the famous K&J Proven Queen 259 donor that is affectionately known across the industry as "Lizzo"!
- Over the last few years "Lizzo" has proven her versatility and ability to generate at a very high level regardless of sire selection or breed affiliation.
- One of the most well-known sisters to this pair of females is OAKP RJ Lizzo K56, the \$69,500 half interest female that was selected in the 2022 RJ Cattle Co. Commitment to Excellence Sale by Sara Sullivan. Fast forward to the summer of 2023, Sara Sullivan led OAKP RJ Lizzo K56 into the coliseum at the Iowa State Fairgrounds where she would later be selected as the 2023 AJSA National Classic Grand Champion Percentage Simmental Heifer. OAKP RJ Lizzo K56 was the 2023 American Royal Supreme Champion Junior Breeding Heifer and the 2023 NAILE Supreme Champion Open Breeding Heifer!
- Lafrentz Lizzo 507 is sired by the popular BNWZ Dignity 8017, therefore aligning some of the most powerful and productive matrons within the Angus breed. 507 is without question one of the stoutest featured, boldest made, and softest bodied females in the entire offering. 507 is massive from every angle of evaluation, while maintaining a superior skeletal build. She is a true donor cow in the making that we believe has the credentials to compete at a high level, however her true value will come in production. Invest with confidence!



**OAKP LIZZO K56**  
2023 NAILE  
SUPREME CHAMPION OPEN BREEDING HEIFER  
MATERNAL SISTER TO LOTS 1 & 2



**OAKP LIZZO K56**  
2023 AMERICAN ROYAL  
SUPREME CHAMPION JUNIOR BREEDING HEIFER  
MATERNAL SISTER TO LOTS 1 & 2

BREED  
ANGUS



2

## LAFRENTZ LIZZO 508

AAA 21344165 >>> DOB 2/4/25 >>> TATTOO 508 >>> BREED ANGUS

PVF INSIGHT 0129

COLBURN PRIMO 5153

**BNWZ DIGNITY 8017**



**K&J PROVEN QUEEN 259 "LIZZO"**

CCC SARA'S DREAM 5116

PVF PROVEN QUEEN 5250

- Lafrentz Lizzo 508 is the February born daughter of K&J Proven Queen 259 "Lizzo" that offers an elite look of quality and style from the profile. Much like her big sister, 508 is tremendous in terms of her skeletal quality and squareness of build.
- Another maternal sister to this pair of ET flushmate sisters is POAK Lizzo 39L ET. She was the 2024 Aksarben Supreme Champion Breeding Heifer and the 2024 American Royal Grand Champion Open and Junior Maine Angus Heifer for Creighton Werning. OAKP RJ Lizzo 422M is another maternal sister to 507 and 508 that is sired by W/C Bankroll 811D. She was recently selected as the 2025 Aksarben Supreme Champion Breeding Heifer for Creighton Werning!
- Let's not forget about the countless other maternal sisters that have been shown by Oaklyn Plamp and the Schick sisters this past summer. OAKP Audi 106M was selected as the 2025 IL State Fair Grand Champion Percentage Simmental Heifer and 4th Overall Breeding Heifer for Conley Schick. She was also selected as the 2025 AJSA National Classic 4th Overall Percentage Simmental Heifer. OAKP RJ Lizzo M254 was the 2025 AJSA National Classic 3rd Overall Percentage Simmental Heifer for Paisley Schick.
- Consistency is the key to success, and this pair of females are supported by one of the most dominant Angus donors in the industry. A top shelf show heifer prospect that is destined for tremendous success both on the tanbark and in production... dig your heels in here!



**K&J PROVEN QUEEN 259 "LIZZO"**  
DAM OF LOTS 1 & 2



**POAK LIZZO 39L ET**  
2024 AMERICAN ROYAL  
GRAND CHAMPION MAINE-ANGUS HEIFER  
MATERNAL SISTER TO LOTS 1 & 2



BREED  
ANGUS

3

**UDE SARAS DREAM 5186**

AAA 21358674 &gt;&gt;&gt; DOB 4/12/25 &gt;&gt;&gt; TATTOO 5186 &gt;&gt;&gt; BREED ANGUS

PVF INSIGHT 0129

EXAR BLUE CHIP 1877B

**BNWZ EXECUTIVE DECISION 2219****UDE SARAS DREAM 1086**

CCC SARA'S DREAM 5116

SILVEIRAS SARAS DREAM 2335

• Pedigree, pedigree, pedigree!!! Ladies and gentlemen, it is with tremendous excitement that we introduce you to UDE Saras Dream 5186, a FULL SISTER in blood to the dominant UDE Saras Dream 4010, the 2025 NJAS Grand Champion Owned Heifer for KayLee Langford of Texas.

• 5186 is a direct daughter of the record shattering \$600,000 UDE Saras Dream 1086 that was campaigned by Sara Sullivan. UDE Saras Dream 1086 was described by some of the most astute cattlemen, breeders and show families in the business as "the best" heifer calf of any breed they had ever laid eyes on. Profound terms such as "pristine," "incredible" and "flawless" were used to depict the first impression that UDE Saras Dream 1086 portrayed.

• 5186 is sired by BNWZ Executive Decision 2219, the 2023 NAILE ROV Grand Champion Angus and Supreme Champion Bull. He was the 2023-2024 ROV Show Bull of the Year, following in the footsteps of his dominant dam, CCC Sara's Dream 5116, the legendary full sister to Colburn Primo 5153.

• Her maternal granddam, Silveiras Saras Dream 2335, was the 2013 American Royal ROV Champion Angus Heifer and is a full sister to the great Silveiras Saras Dream 1339, the dam of Colburn Primo 5153 and CCC Sara's Dream 5116.

• The first three daughters of 1086 sold last fall for \$400,000, \$44,000, and \$37,000 to average an incredible \$160,000 per head! Another full sister in blood to 5186, UDE Saras Dream 4001, was selected as the 2024 Badger Brawl Supreme Champion Heifer in Ring A and Reserve Supreme Champion Heifer in Ring B for the Curtin family of Iowa.

• Hayden Hoffman led a maternal sister to UDE Saras Dream 5186, UDE Saras Dream 4017, to Reserve Division honors at the 2025 National Western Stock Show.

• Her presence, balance from the side, skeletal quality, and genuine mass is hard to deny. When set into motion she is simply flawless. Without a doubt one of the premier Angus show heifer prospects that we have EVER offered in Prague, Oklahoma!



**UDE SARAS DREAM 1086**  
\$600,000 DAM OF LOT 3



**UDE SARAS DREAM 4010**  
2025 NJAS GRAND CHAMPION OWNED HEIFER  
FULL SISTER IN BLOOD TO LOT 3



**UDE SARAS DREAM 4017**  
2025 NWSS ROV RESERVE DIVISION II CHAMPION HEIFER  
\$37,000 MATERNAL SISTER TO LOT 3

BREED  
ANGUS



4

## UDE PHYLLIS 5180

AAA 21358675 >>> DOB 5/3/25 >>> TATTOO 5180 >>> BREED ANGUS

PVF INSIGHT 0129

SILVEIRAS STYLE 9303

**BNWZ DIGNITY 8017**



**UDE PHYLLIS 9129**

CCC SARA'S DREAM 5116

FCF PHYLLIS 532

- UDE Phyllis 5180 is a very attractive profiling May born daughter of BNWZ Dignity 8017 that is supported by the famed "Phyllis" tribe. The dam of 5180 is the \$115,000 UDE Phyllis 9129, the Silveiras Style 9303 sired daughter of FCF Phyllis 532 that was campaigned to countless victories by Kinnick Paulsen of Iowa.
- Her maternal granddam, FCF Phyllis 532, has cemented her position as the leading descendant of the elite SCC Phyllis 051 cow family and has solidified her spot as one of the great producing Angus females in the history of the breed.
- 5180 is a three-quarter sister in blood to UDE New Heights 62/87, the \$280,000 half interest Angus AI sire that sold in the 18th Annual Embryos on Snow. His first calf crop is taking the business by storm!
- Other three-quarter sisters in blood to UDE Phyllis 5180 would include the \$300,000 UDE Phyllis 4019, the 2024 Hoosier Beef Congress 5th Overall Breeding Heifer for Mercedes Ferree. UDE Phyllis 4011, was the 2024 Down 4 The Cause Supreme Champion Heifer in Ring A and Reserve Supreme Champion Heifer in Ring B for Kaitlyn Berg. She was also the 2025 IA Beef Expo Reserve Supreme Champion Breeding Heifer! Finally, UDE Phyllis 3001, was the \$135,000 selection of Ferguson Show Cattle from Udell Cattle Company in "The Advantage" Production Sale in 2023.
- This daughter of UDE Phyllis 9129 is so elegant about her front third, smooth shouldered, clean chested, and transitions into a bold forerib and center body shape. Her basic build and genuine quality is what will set her apart when it truly counts. A big time May born show heifer prospect that is backed by a ROYAL pedigree!



**UDE PHYLLIS 9129**  
\$115,000 DAM OF LOT 4



**UDE PHYLLIS 4019**  
2024 HOOSIER BEEF EXPO  
5TH OVERALL BREEDING HEIFER  
\$300,000 MATERNAL SISTER TO DAM OF LOT 4



**UDE NEW HEIGHTS 62/87**  
\$280,000 MATERNAL BROTHER TO DAM OF LOT 4

BREED  
ANGUS

5

**FERREE FITZ BLACKBIRD 2507**

AAA 21360297 &gt;&gt;&gt; DOB 1/25/25 &gt;&gt;&gt; TATTOO 2507 &gt;&gt;&gt; BREED ANGUS

PVF INSIGHT 0129

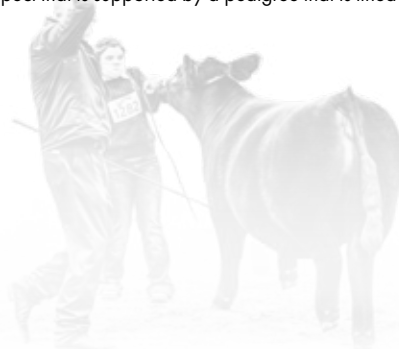
SCC SCH 24 KARAT 838

**BNWZ DIGNITY 8017****UDE BLACKBIRD 0153**

CCC SARA'S DREAM 5116

HOFFMAN H/G BLACKBIRD 620

- Ferree Fitz Blackbird 2507 is an incredible designed daughter of BNWZ Dignity 8017 that is supported by the \$300,000 Ferree-Fitzgerald owned UDE Blackbird 0153! We love her ability to combine so much power, substance, and shape with true elegance and balance from the side.
- Her dam, UDE Blackbird 0153, took the breed by storm as one of the very first daughters of SCC SCH 24 Karat 838 to hit the auction block back in the fall of 2020. 0153 was the 2020 Hoosier Beef Congress Supreme Champion Breeding Heifer, 2021 Cattlemen's Congress ROV Reserve Grand Champion Angus Heifer, 2021 KY Beef Expo Supreme Champion Breeding Heifer, and a multiple time National Division Champion during her highly decorated show career!
- The maternal granddam of 2507 is Hoffman H/G Blackbird 620, the 2017 NJAS Grand Champion Owned Heifer for Maddy Udell. She was also selected as the 2017 American Royal Grand Champion Junior Angus Heifer and 2017 NAILE Reserve Grand Champion Junior Angus Heifer.
- 2507 is a stout featured female that is long fronted and high tying in her neck attachment, smooth shouldered, and bold in her body shape. She is clean chested and offers optimum progression of depth back into her rear rib and flank. In addition, she has been blessed with tremendous hair quality. A big time show heifer/donor prospect that is supported by a pedigree that is lined with purple!



**UDE BLACKBIRD 0153**  
2020 HOOSIER BEEF CONGRESS  
SUPREME CHAMPION BREEDING HEIFER  
\$300,000 DAM OF LOT 5



**UDE BLACKBIRD 0153**  
2021 CATTLEMEN'S CONGRESS  
ROV RESERVE GRAND CHAMPION ANGUS HEIFER  
\$300,000 DAM OF LOT 5



**HOFFMAN H/G BLACKBIRD 620**  
2017 NJAS GRAND CHAMPION OWNED HEIFER  
MATERNAL GRANDDAM OF LOT 5

**BREED**  
**ANGUS**



**6**

**TFITZGERALD PHYLLIS 2520**

AAA 21360296 >>> DOB 3/21/25 >>> TATTOO 2520 >>> BREED ANGUS

CONLEY NO LIMIT

HILL VALLEY RECKONING 931

**CONLEY DS CLEAR CUT 0510**



**VISION PHYLLIS 253**

CONLEY SANDY 5104

SCC SCH PHYLLIS 893

- Tim Fitzgerald sent us an extremely high-quality daughter of Conley DS Clear Cut 0510 that is destined for the bright lights! This March born female is supported by some of the Angus breeds most well-known and reputable cow families!
- The sire of 2520 is the \$400,000 Conley DS Clear Cut 0510, the 2021-2022 ROV Show Bull of the Year that has evolved into a truly elite breeding bull. The dam of Conley DS Clear Cut 0510 is Conley Sandy 5104, the 2016-2017 ROV Show Heifer of the Year.
- 2520 is supported by the famed "Phyllis" cow family. Her dam, Vision Phyllis 253, is sired by the outcross Hill Valley Reckoning 931 and further supported by the famed SCC Phyllis 052, a FULL SISTER to SCC Phyllis 051. Countless high sellers, champions, and individuals of influence trace to this proven lineage.
- Vision Dr Phil 2025 is a FULL BROTHER to the dam of 2520. He took the industry by storm when on display at the National Western Stock Show. He is an extremely wide based, bold ribbed, square built individual that is loaded with quality, shape, and real-world functionality.
- Another top shelf Angus show heifer prospect that is backed by a cow family that you can hang your hat on!



**CONLEY DS CLEAR CUT 0510**  
2021-2022 ROV SHOW BULL OF THE YEAR  
\$400,000 VALUED SIRE OF LOT 6



**VISION DR PHIL 2025**  
FULL BROTHER TO DAM OF LOT 6



**VISION PHYLLIS 253**  
DAM OF LOT 6

**BREED**  
ANGUS



7

## LAFRENTZ MICH WHEAT PEG 509

AAA 21344068 >>> DOB 3/10/25 >>> TATTOO 509 >>> BREED ANGUS

COLLISON ALPHA 028

PLUM CREEK REFRESH 561A

**BLC/MLA OMEGA 2258**



**HOFFMAN PEG 9482**

MLA PROVEN QUEEN 2058

ECR 2604 PEG 4144

- The lone daughter of the \$95,000 BLC/MLA Omega 2258 in this year's sale offering is one that deserves serious consideration if you're in the market for an Angus heifer that has the extra "bells and whistles" that it takes to compete at a very high level.
- The dam of Lafrentz Mich Wheat Peg 509 is Hoffman Peg 9482, the Plum Creek Refresh 561A daughter that is backed by the prolific Dameron First Class donor dam known as ECR 2604 Peg 4144. 4144 was a very competitive show heifer for Shayne that was selected as the 2015 NJAS Division V Junior Champion. A full sister to her dam, Hoffman Peg 9539, is one of the leading Angus donors for Jared Werning Cattle and Harrell Cattle Company.
- 509 is a maternal sister to the \$86,000 Mich Wheatland Coalfields 2177K, the National Champion Angus Bull at the 2024 Farmfair International and Top 5 in the Alberta Supreme drive.
- She is a stout featured, bold ribbed and wide based female that offers a very ladylike look from the profile despite her extra power and shape. There is no doubt that 509 will be a very productive brood cow when her successful show career comes to a close... invest in the future of your program here!



**HOFFMAN PEG 9539**  
FULL SISTER TO DAM OF LOT 7



**BLC/MLA OMEGA 2258**  
\$95,000 SIRE OF LOT 7

**BREED**  
ANGUS



**8**

**BSSC TSSC ANNIE 5068**

AAA 21369081 >>> DOB 4/15/25 >>> TATTOO 5068 >>> BREED ANGUS

SSF ON POINT 4028

SCC SCH 24 KARAT 838

**ROSE MC ENCORE 0463**



**CORE ANNIE LU 24K 230K**

BURNS ELBA 1454

PLUM CREEK ANNIE LU 4472

- BSSC TSSC Annie Lu 5068 is an elite April born daughter of the \$240,000 valued ROSE MC Encore 0463, a past Live Lot in the 15th Annual Embryos on Snow! The dam of 5068 is the dynamic Core Annie Lu 24K 230K, one of the greatest daughters of the iconic Plum Creek Annie Lu 4472 in existence!
- Both sides of the pedigree that supports 230K reads of the shining stars of the Angus business, as this daughter of SCC SCH 24 Karat 838 carries the likes of the iconic NWSS Champion, FCF Proven Queen 419 paternally. Her lineage is accompanied by the potency of the "Annie Lu" cow family on the bottom side of her pedigree, making her a maternal sister to the \$200,000 valued promotional AI sire, SSF On Point 4028.
- 230K was the 2022 Hoosier Beef Congress Supreme Champion Breeding Heifer for Braylen Schaeffer. She was then selected as the 2023 Cattlemen's Congress Reserve Grand Champion Junior Angus Heifer. 230K was later slapped Reserve Grand Champion Junior Angus Heifer at the 2023 NAILE and 4th Overall Junior Breeding Heifer!
- Pedigree, presence, and profit earning potential are all-inclusive with this elite Angus show heifer/donor prospect that is straight from the heart of the Schaeffer Show Cattle breeding program!



**CORE ANNIE LU 24K 230K**  
2022 HOOSIER BEEF CONGRESS  
SUPREME CHAMPION BREEDING HEIFER  
DAM OF LOT 8



**CORE ANNIE LU 24K 230K**  
2023 CATTLEMEN'S CONGRESS  
RESERVE GRAND CHAMPION JUNIOR ANGUS HEIFER  
DAM OF LOT 8



**CORE ANNIE LU 24K 230K**  
2023 NAILE  
4TH OVERALL JUNIOR BREEDING HEIFER  
DAM OF LOT 8



BREED  
CHAROLAIS

9

## AC MS NOW OR NEVER 2547 ET

AICA EF1371862 &gt;&gt;&gt; DOB 4/8/25 &gt;&gt;&gt; TATTOO 2547 &gt;&gt;&gt; BREED CHAROLAIS

M&amp;M OUTSIDER 4003 PLD

TR MR DIABLO 2742Z ET

BOY OUTLIER 812 ET PLD



BOY SMOKIN MONTE 7311

TR MS BERKLY 4711B ET

TR MS SMOKIN MONTIE 3588A

- We transition into the Charolais division with a direct daughter of the legendary BOY Smokin Monte 7311, one of the HOTTEST females in the breed that continues to produce at a very high level. There is no denying the potency and profit generating potential that lies within!
- BOY Smokin Monte 7311 was the 2019 NWSS Grand Champion Charolais Heifer for Carter Hoge of Illinois. Since her time at the end of the leather lead, 7311 has quickly evolved as one of the most dominant producing Charolais females of all-time!
- BOY Smokin Monte 200J is a FULL SISTER to AC Ms Now Or Never 2547 ET. 200J was Grand Champion Female in both the Bred & Owned and Owned shows at the 2022 National Junior Heifer Show, 2022 American Royal, 2022 North American & Junior Show at the 2023 Cattleman's Congress. Her most notable win was when she was slapped Reserve Supreme Champion Breeding Heifer at the 2022 North American International Livestock Exposition.
- Sara Sullivan campaigned her daughter of BOY Smokin Monte 7311 to countless victories. She was selected as the 2022 NAILE Reserve Grand Champion Junior Charolais Heifer, only to top that at the 2023 Cattleman's Congress beating out her full sister to be crowned Grand Champion Charolais Heifer. She then claimed the Reserve Grand Champion Owned Heifer title at the 2023 AIJCA Junior National in Minneapolis for Sara Sullivan!
- 2547 is also a FULL SISTER to Avery Sweeney's BOY HL Lilo 350L, the 2024 Supreme Champion Breeding Heifer at both the Iowa State Fair and the NAILE. Additionally, 2547 is a full sister to Carter Hoge's 3rd Overall Champion Owned Heifer and Grand Champion Bred & Owned Heifer at the 2024 AIJCA Junior National Show, along with the Reserve Champion Charolais Heifer in the NAILE Junior Charolais Show.
- Supported by one of the most decorated pedigrees in the history of the Charolais breed... this female is nothing short of a blue-chip investment!



**BOY SMOKIN MONTE 7311**  
2019 NWSS  
GRAND CHAMPION CHAROLAIS HEIFER  
DAM OF LOT 9



**BOY SMOKIN MONTE 200J**  
2022 NAILE  
RESERVE SUPREME CHAMPION JUNIOR BREEDING HEIFER  
FULL SISTER TO LOT 9



**BOY HL LILLO 350L**  
2024 NAILE  
SUPREME CHAMPION JUNIOR BREEDING HEIFER  
FULL SISTER TO LOT 9

BREED  
CHAROLAIS



10

## AC PGC MS NADIA 2501 ET

AICA EF1371899 >>> DOB 2/6/25 >>> TATTOO 2501 >>> BREED CHAROLAIS

ONL AWR COOL CUB 7C

MGM OUTSIDER 4003 PLD

**BRCHE COOL DOT 0503 PLD ET**



**PGC MS FEBE 8882F ET**

TR MS DOTTIE 6703D ET

TR MS BERKLY 4711B ET

• Next up is a FULL SISTER to the dominant AC PGC Ms London 2321, the many times National Champion Charolais Heifer that was campaigned by Blake Bruns of Nebraska. AC PGS Ms London 2321 hit the scene at the 2024 Cattlemen's Congress when she was selected as the Reserve Grand Champion Open Heifer. She continued her winning ways through the summer when she was slapped Reserve Grand Champion Owned Heifer at the 2024 AIJCA Junior National in Belton, Texas. She then returned to Oklahoma City this past January to be selected as the 2025 Cattlemen's Congress Grand Champion Junior Charolais Heifer and Reserve Grand Champion Open Charolais heifer. 2321 concluded her decorated show career when she was selected as the 2025 NWSS Reserve Grand Champion Charolais Heifer in the Junior and Open shows on "the hill" in Denver.

• There is no denying the genuine skeletal quality, body shape, stoutness, and symmetry from the side that AC PGC Ms Nadia 2501 ET possesses. Many that have already been through this year's sale cattle have labeled her as "one of the best" in the entire sale offering!

• In addition to her extreme quality, AC PGC Ms Nadia 2501 ET has been blessed with extreme hair quality. She offers the same silhouette from the side as her banner winning full sister, however we believe that she offers a shot more in terms of foot size, bone circumference, and pin width. A maternal sister was selected in last year's sale by the Crutcher family of Missouri, and a natural born W/C Milestone 5223P daughter of PGC MS Febe 8882F ET has been very successfully campaigned by Burke Shipman being the 3rd Overall Supreme Female at the 2025 Heart O'Texas Fair & Rodeo in her first time out.

• The dam of 2321 is a PA Free daughter of the legendary National Champion known as TR Ms Berkly 4711B, one of the highest dollar generating and most important Charolais females in history. 2321 is without a doubt one of the very best Charolais females that we have EVER laid our eyes on and firmly believe that she has the credentials to compete at a very high level, but more importantly she will be a dominant force in production like the matriarchs that line her star-studded pedigree!



**AC PGC MS LONDON 2321**

2024 AIJCA

RESERVE GRAND CHAMPION OWNED HEIFER

FULL SISTER TO LOT 10 & DAM OF LOT 11



**AC PGC MS LONDON 2321**

2025 NWSS

RESERVE GRAND CHAMPION CHAROLAIS HEIFER

FULL SISTER TO LOT 10 & DAM OF LOT 11



**PGC MS FEBE 8882F ET**

DAM OF LOT 10 & MATERNAL GRANDDAM OF LOT 11

**BREED**  
COMPOSITE  
CHAROLAIS



**11**

**PECK PAVLOVA 510N**

AICA RF717952 >>> DOB 2/14/25 >>> TATTOO 510N >>> BREED COMPOSITE CHAROLAIS

ELLINGSON THREE RIVERS 8062

BRCHE COOL DOT 0503 PLD ET

**MICH WHEATLAND BULL 2200K**



**AC PGC MS LONDON 2321 ET**

HOFFMAN PEG 9482

PGC MS FEBE 8882F ET

- Next up is the first-born daughter of AC PGC Ms London 2321, the many times National Champion Charolais female that was campaigned by Blake Bruns and will serve as a foundation breeding piece for the Peck Family's Charolais breeding program!
- The sire of Peck Pavlova 510N "Pav" is a FULL BROTHER to the \$86,000 Mich Wheatland Coalfields 2177K, the National Champion Angus Bull at the 2024 Farmfair International and Top 5 in the Alberta Supreme drive.
- "Pav" is a very complete Charolais Composite female that is built just like her dam when it comes to skeletal quality and flexibility. We love the natural turn and sweep to this silver hided beauty's center body shape. She is so maternal in her overall appearance, offering a fault-free design that will be hard to turn on the tanbark.
- 510N is a triple clean Charolais Composite female that offers unlimited mating flexibility when it comes to generating show steers or show heifers alike. We firmly believe that 510N has the credentials to find her way to the backdrop early and often!



**AC PGC MS LONDON 2321**  
2025 CATTLEMEN'S CONGRESS  
GRAND CHAMPION CHAROLAIS HEIFER  
FULL SISTER TO LOT 10 & DAM OF LOT 11



**AC PGC MS LONDON 2321**  
2024 CATTLEMEN'S CONGRESS  
RESERVE GRAND CHAMPION CHAROLAIS HEIFER  
FULL SISTER TO LOT 10 & DAM OF LOT 11

**BREED**  
2.35% CHIANINA



**12**

**MSKB RIO LADY 22N**

ACA 428915 >>> DOB 3/15/25 >>> TATTOO 22N >>> BREED 2.35% CHIANINA

BUSINESS DONE RIGHT

MR HOC BROKER

**IN GOD WE TRUST**



**LLW QUEEN OF SPADES 22F ET**

HL 961

QUEEN OF SPADES 443B

- Straight from the heart of the El Paisano Ranch breeding program comes this stunning gold hided beauty that is sired by the legendary In God We Trust!
- The dam of MSKB Rio Lady 22N is sired by the Triple Crown winning MR HOC Broker, one of the greatest Simmental breeding bulls of all-time. The maternal side of her pedigree further traces to the influence of the iconic J&J Queen 414, one of the most prolific Angus females in history that has raised National Champions across three different breeds. The maternal granddam of 22N is Queen of Spades 443B, a FULL SISTER to the famous WLTR Lydia 39U ET, the 2009 American Royal Reserve Grand Champion Percentage Simmental Heifer. She is also a full sister to WLTR Renegade 40U ET, the 2010 NWSS Reserve Grand Champion Percentage Simmental Bull, 2010 American Royal Grand Champion Percentage Simmental Bull, and 2011 NWSS Grand Champion Percentage Simmental Bull.
- J&J Queen 414 is also the dam of PF First Class Dolly A351, the 2015 OYE Supreme Champion Breeding Heifer for the Myers family of Oklahoma. 414 also produced Schultz Irish Whiskey 46B, the 2015 NWSS Grand Champion MaineTainer Heifer for AW Cattle Company of Texas.
- Countless high sellers, National Champions, and individuals of influence trace to the legendary 414 donor dam. This is a unique opportunity to invest in a Low Chianina show heifer prospect that has the build and pedigree essential to generate elite show cattle!

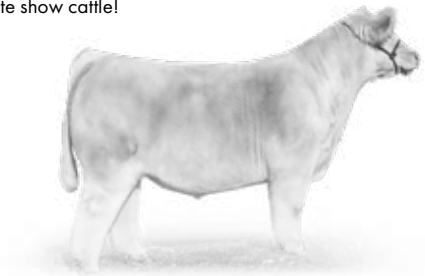


**PF FIRST CLASS DOLLY A351**  
2015 OYE SUPREME CHAMPION BREEDING HEIFER  
MATERNAL SISTER TO MATERNAL GRANDAM OF LOT 12



**QUEEN OF SPADES 22F ET**  
MATERNAL GRANDAM OF LOT 12

**IN GOD WE TRUST**  
SIRE OF LOT 12



**BREED**  
7.77% CHIANINA



**13**

**SUL CALL ME STOUT 26N ET**

ACA 428892 >>> DOB 1/23/25 >>> TATTOO 26N >>> BREED 7.77% CHIANINA

ASHW WHO DA MAN

MR HOC BROKER

**SUL WHO DA BOSS 109C ET**



**HARA'S PRINCESS 6353D**

SUL 500R

HARAS HAIRIETTA CLONE H4W

- Without a doubt one of the premier Chianina show heifer/donor prospects in this year's offering. SUL Call Me Stout 26N ET is sired by SUL Who Da Boss 109C ET, arguably the greatest son of the legendary ASHW Who Da Man to EVER surface!
- A January born prospect that is unmatched in terms of stoutness, power, genuine substance, and true skeletal quality. It is so challenging to make cattle with her combination of structural correctness, power, and presence.
- The dam of 26N is Hara's Princess 6353D, a FULL SISTER to the \$190,000 Hara's Miss Princess 100Z, the 2013 NWSS Grand Champion Percentage Simmental Heifer for the Udell family. She is also a full sister to RJ's famous "Lady Killer" donor, the iconic Hara's Kim Kardashian 1C! During her time at RJ Cattle Co., she has produced countless high sellers and champions across breed lines. "Lady Killer" is the dam of the \$135,000 RJ Trust Fund 212K, the incredible SimGenetic AI sire that continues to make waves across the industry. She is also the dam of RJC Lady Killer 322L ET, the 2024 National Junior Heifer Show Grand Champion Low Chianina Heifer for Preston Hartman and Gana Farms. Let's not forget that "Lady Killer" is also the dam of the 2024 IL State Fair Grand Champion Market Steer for the Gensini family. The diverse mating options and extreme consistency regardless of sire selection is what makes this genetic gem so valuable in our opinion.
- Supported by the influence of ASHW Who Da Man, MR HOC Broker, and Hara's Hairietta Clone H4W... what a genetic combination! 26N has the credentials in terms of lineage and phenotype alike to generate nationally competitive show heifers or elite banner hanging show steers... the sky is truly the limit!



**HARA'S MISS PRINCESS 100Z**  
2013 NWSS  
GRAND CHAMPION PERCENTAGE SIMMENTAL HEIFER  
\$190,000 FULL SISTER TO DAM OF LOT 13



**HARA'S PRINCESS 120**  
2017 NAILE  
GRAND CHAMPION PERCENTAGE SIMMENTAL HEIFER  
FULL SISTER TO DAM OF LOT 13



**HARA'S KIM KARDASHIAN 1C "LADY KILLER"**  
FULL SISTER TO DAM OF LOT 13

**BREED**  
6.55% CHIANINA



**JSUL WHO'S PLAYING 6973D ET**  
DAM OF LOT 14

**14**

**TSSC WHO'S PLAYING 5048N ET**

ACA 428946 >>> DOB 3/11/25 >>> TATTOO 5028N >>> BREED 6.55% CHIANINA

SCC TRADITION OF 24

ASHW WHO DA MAN

**SCC SCH 24 KARAT 838**



**JSUL WHO'S PLAYING 6973D ET**

FCF PROVEN QUEEN 419

JSUL SULTRY 6640

- TSSC Who's Playing 5048N ET is another Chianina show heifer prospect that is supported by one of the most elite daughters of the legendary ASHW Who Da Man in existence, JSUL Who's Playing 6973D ET!
- JSUL Who's Playing 6973D ET completely dominated the National Chianina Show at the North American International Livestock Exposition in 2020, 2021 and 2022, with three different daughters being crowned as the coveted National Champion Chianina Female. She has emerged as the newest initiator of the stronghold that the JSUL Sultry 6640 cow family has had over the breed for longer than a decade. The influence of the great JSUL Sultry 6640 will be everlasting on the industry.
- Last fall, a daughter of JSUL Who's Playing 6973D ET sired by ROSE MC Encore 0463 was the "buzz" in Hagerstown, Indiana. After a lengthy battle, the final bid rolled in and TSSC Who's Gonna Play 4015M ET sold for an impressive \$201,000 hammer price! She began her show career in a dominant fashion as she was selected as the 2024 KILE Supreme Champion Junior Breeding Heifer and the 2024 American Royal Grand Champion Open Chianina Heifer for Hadley Hendrickson of Indiana. She was also selected as a Division Champion at the 2024 NAILE and was the 2024 Hoosier Beef Congress Grand Champion Chianina Heifer.
- A full sister to 5048N, TSSC I'm Gonna Be 048H, was crowned as the 2021 NAILE Grand Champion Chianina Heifer for the Jones family of Ohio. Several other maternal sisters have been high sellers and champions at every level of competition!
- 5048N is so elegant and refined about her front third, clean chested, smooth shouldered, soft bodied and offers a look of quality and balance from the side that is simply bullet proof!



**TSSC I'M GONNA BE 048H**  
2021 NAILE GRAND CHAMPION CHIANINA HEIFER  
FULL SISTER TO LOT 14



**PRESTON'S ETHEL ET**  
2022 NAILE GRAND CHAMPION CHIANINA HEIFER  
MATERNAL SISTER TO LOT 14



**TSSC WHO'S GONNA PLAY 4015M ET**  
2024 AMERICAN ROYAL  
GRAND CHAMPION CHIANINA HEIFER  
\$201,000 MATERNAL SISTER TO LOT 14

**BREED**  
12.76% CHIANINA



15

**DUNK BIANCA 587N ET**

ACA PENDING >>> DOB 4/5/25 >>> TATTOO 587N >>> BREED 12.76% CHIANINA

BMW ONSET

MONOPOLY

THAZ END 2 END ET



BIANCA

MPJ FALON 838F

FLNM WHO DA MAN

• Dunk Bianca 587N ET is the first of several elite females that we are proud to offer with the Dunklau Family of Wayne, Nebraska. Ryan, Crystal, and their family own and operate one of the truly impressive, diversified farming and ranching operations in the country. Dunk Cattle Company is home to some of the most prolific donors in the business when it comes to generating elite show cattle!

• 587N is sired by the resident herd sire at Dunk Cattle Company, THAZ End To 2 End ET, the BNW Onset sired son of MPJ Falon 838F, a daughter of Fu Man Chu. The maternal side of her pedigree is supported by the influence of the incredible "Bianca" donor that was selected as the 2018 NWSS Grand Champion Chianina Heifer and 2017 NAILE Reserve Grand Champion Chianina Heifer.

• We love the power, style, and genuine quality that this 12.76% Chianina female offers. She is high in her neck attachment, clean chested, bold in the shape of her rib cage, and offers an elite look of quality and balance from the profile. If her added eye appeal from the side doesn't get you noticed, then her unique color pattern is sure to turn heads!

• Supported by a cow family that is proven in the showing and in production...she is bred in the purple!



**BIANCA**  
2018 NWSS GRAND CHAMPION CHIANINA HEIFER  
DAM OF LOT 15



**BIANCA**  
2017 NAILE  
RESERVE GRAND CHAMPION CHIANINA HEIFER  
DAM OF LOT 15

**BREED**  
**MAINTAINER/  
 LOW CHI**



**16**

**DUNK MALAH 588N ET**

AMAA 566123 | ACA 429299 >>> DOB 4/11/25 >>> TATTOO 588N >>> BREED MAINTAINER/LOW CHI

NMR MATERNAL MADE

SWAG

**GOOD AS IT GETS ET**



**HDLY MALAH 945G ET**

MEYER FANNY 267Z

HADLEY'S WHISKEY GIRL

- The next female is a powerful daughter of the very popular Good As It Gets stud that is a member of the illustrious herd sire battery at Rodgers Cattle Company. The dam of this powerful black and white beauty is HDLY Malah 945G ET, the Swag daughter that is supported by the legendary Hadley's Whiskey Girl donor dam.

- The maternal granddam of this unique designed MaineTainer/Low Chianina heifer, Hadley's Whiskey Girl, was a many times champion turned dominant donor dam for the Dunklau Family. She produced HDLY Daddy's Girl 602D, the 2016 IA State Fair Grand Champion Prospect Heifer.

- We love the genuine stoutness, power, and eye appeal that this dynamic female possesses. She is a dual-purpose show heifer/donor prospect in our mind that can certainly be utilized to produce elite show heifers or show steers depending on your program's production goals.

- In addition to her rugged bone design and uniqueness of feature, she has been blessed with an extreme hair quality. She is ready to roll, and we believe will frequent the backdrop early and often!



**HADLEY'S WHISKEY GIRL**  
 MATERNAL GRANDDAM OF LOT 16



**HDLY DADDY'S GIRL 602D**  
 2016 IA STATE FAIR  
 GRAND CHAMPION PROSPECT HEIFER  
 MATERNAL SISTER TO DAM OF LOT 16

**GOOD AS IT GETS**  
 SIRE OF LOT 16



**BREED**  
**MAINTAINER/  
 LOW CHI**



**17**

**DUNK BRANDY 589N ET**

AMAA 566135 >>> DOB 3/17/25 >>> TATTOO 589N >>> BREED MAINTAINER/LOW CHI

GOET 180

EXIT RAMP

**BBR MEMPHIS MAFIA 3E ET**



**JACW MS BRANDY "300"**

GEF MISS DOMINATRIX 236A

MVAN MISS FERGIE

- Yes, you are reading things correctly, this is a direct daughter of the incredible JACW Ms Brandy donor dam that is more commonly known across the industry as Charlie Wilson's "300" donor!
- "300" is without a doubt one of the most well-known and productive donors in the Wilson Cattle Company donor arsenal. "300" was the 2019 National Junior Heifer Show Grand Champion MaineTainer Heifer for Sara Sullivan.
- Maternal sisters to this dynamic breeding piece have sold for \$52,000, \$33,500, and \$16,500, while a pair of steers out of "300" averaged \$45,000!
- She is a FULL SISTER to HCW Lovin Lyla ET, the \$125,000 daughter of BBR Memphis Mafia 3E ET that was selected by the Fox Family in the 2024 Divas & Donors Sale! She was later selected as the 2025 NWSS 3rd Overall Prospect Heifer. A maternal sister to this impressive female sired by Weis All Me 10F, HCW Ms. Matilda 283M ET, was selected as the 2025 IA State Fair Supreme Champion FFA Breeding Heifer.
- "300" continues to generate at a very high level, and there is no doubt that the best is yet to come! This elite MaineTainer female is truly special in terms of skeletal quality, body shape, and balance. Invest in a show heifer that can compete at every level, but at the end of the day has the credentials to become a high-income generating donor that will elevate your program to a new tax bracket!



**JACW MS BRANDY "300"**  
 2019 NATIONAL JUNIOR HEIFER SHOW  
 GRAND CHAMPION MAINTAINER HEIFER  
 DAM OF LOT 17



**HCW LOVIN LYLA ET**  
 2024 NWSS 3RD OVERALL PROSPECT HEIFER  
 \$125,000 FULL SISTER TO LOT 17



**HCW MS. MATILDA 283M ET**  
 2025 IOWA STATE FAIR  
 SUPREME CHAMPION FFA BREEDING HEIFER  
 MATERNAL SISTER TO LOT 17

**BREED**  
**MAINE ANGUS**



**18**

## **GAL MISS KATIE 01N ET**

AMAA 565638 >>> DOB 4/3/25 >>> TATTOO 01N >>> BREED MAINE ANGUS

GOET 180

COLBURN PRIMO 5153

**BBR MEMPHIS MAFIA 3E ET**



**MINN KATIE 016H**

GEF MISS DOMINATRIX 236A

MINN KATIE 9B

- GAL Miss Katie 01N ET is a standout Maine Angus/Low Chianina show heifer prospect sired by BBR Memphis Mafia 3E ET that is supported by one of the most well-known and respected cow families in the Maine-Anjou breed!
- The dam of 01N is the stunning MINN Katie 016H ET, the Colburn Primo 5153 sired daughter of the legendary MINN Katie 9B donor. 016H was successfully campaigned to countless victories by Brenna Wilkins of Iowa, including being selected as the 2021 American Royal Reserve Grand Champion Maine Angus Heifer. 016H is the dam of one of the best bull prospects ever raised at Minnaert Show Cattle, MINN Sure Thing 248K.
- Her second born calf, MINN Lois Lane 305L, was the \$66,000 selection of Dave Guyer that went on to be selected as the 2024 NWSS Grand Champion Prospect Heifer. 305L was also selected as the 2024 NAILE Grand Champion Maine Angus Heifer. A full sister to 01N was recently selected as the 2025 IL State Fair Grand Champion AOB Heifer for Avery Seys. She was also selected as the 2025 National Junior Heifer Show Division II Champion Maine Angus Heifer.
- Other maternal sisters to 01N have sold for \$58,500, \$28,500, \$28,500, and \$16,000 over the last couple years. 01N is an extremely smooth made, elegant designed female that is flawless in her basic build, bold ribbed, and square built off all four corners. A big time Maine Angus show heifer prospect that is supported by multiple generations of proven and prolific matrons!

**BBR MEMPHIS MAFIA 3E ET**  
SIRE OF LOTS 17 & 18



**MINN KATIE 016H ET**  
DAM OF LOT 18



**MINN KATIE 9B**  
MATERNAL GRANDDAM OF LOT 18



**MINN LOIS LANE 305L**  
2024 NWSS  
GRAND CHAMPION PROSPECT HEIFER  
MATERNAL SISTER TO LOT 18

**BREED**  
HIGH MAINE



**19**

**SENNETT NOTABLE 504N ET**

AMAA 564931 >>> DOB 1/5/25 >>> TATTOO 504N >>> BREED HIGH MAINE

MINN LIVE ACTION 203Y

BMW C IN CONTROL 404F ET

**WEIS ALL ME 10F**



**BMW STCC MYA 213J**

BSC CANDI 42Z

MS MYA 303D

- Maine-Anjou cattle have continued to gain popularity due to the extreme quality of the cattle, the breeders, and the leadership in Platte City, Missouri!
- 504N is a female that was bred and raised by the Sennett Family of Indiana and is out of their very impressive BMW STCC Myla 213J donor, the \$86,000 high selling female from the 2021 Winegardner's Harvest of Excellence Female Sale.
- She is sired by the iconic Weis All Me 10F, one of the most influential breeding bulls in the Maine-Anjou breed that continues to sire elite show cattle that dominate at the highest level.
- Her full sister, BCII SCM ESNT Maya 21M ET, was a favorite last fall in South Dakota when she created a HUGE buzz around Adam Schelske's pasture sale. 21M made her way to Stillwater, Oklahoma where she is a member of Kelton Arthur's dominant show string. 21M was selected as the 2025 NWSS Grand Champion Prospect Heifer that has been a true force on the tanbark this past winter and summer show season.
- 504N is a huge footed, extremely flexible, smooth jointed Maine-Anjou show heifer that is massive in the shape of her rib cage, soft bodied, and loose built. We love this female's ability to combine form with function, as she offers the "bells and whistles" needed to compete on the biggest stages in North America.
- This is a female that we believe pound for pound and breed for breed offers as much upside as any female that we have ever sold. Bid with extreme confidence in her ability to hang the big banners and then produce elite progeny that will command the big checks!



**BCII SCM ESNT MAYA 21M ET**  
2025 NWSS GRAND CHAMPION PROSPECT HEIFER  
FULL SISTER TO LOT 19



**BMW STCC MYA 213J**  
\$86,000 DAM OF LOT 19

**BREED**  
HIGH MAINE



**20**

**KMEM HEAVENS WAITING GAME ET**

AMAA 565309 >>> DOB 4/3/25 >>> TATTOO 1322N >>> BREED HIGH MAINE

BOE GARTH

DADDYS MONEY 55Z

**BKMT GAME ON 227G ET**



**KMEM HEAVEN CAN WAIT ET**

BK JFR ZANELLA 227

KDJ HEAVEN 04

- There is no doubt that Keegan Moonen has assembled some of the most elite Maine-Anjou, Maine-Tainer, and Maine Angus donors in the industry. His keen eye for quality and stringent selection criteria is what has enabled his success at every level of competition!
- KMEM Heavens Waiting Game ET is an elite Maine-Anjou show heifer/donor prospect that is sired by BKMT Game On 227G ET, the BOE Garth son that is making huge waves across the industry. The dam of 1322N, KMEM Heaven Can Wait ET, is a maternal sister to the dominant KMEM Porsche ET.
- KMEM Porsch ET was the dominant MaineTainer heifer that was campaigned by the Van Vliet Family of Iowa. She was slapped Supreme Champion 4-H Breeding Heifer at the 2018 IA State Fair and then selected as the 2018 NAILE Grand Champion MaineTainer Heifer.
- It's hard to deny the sheer quality, flexibility, and futuristic look that 1322N possesses. She sets the standard for balance from the profile, while still possessing more than enough power and dimension. This elite High Maine female is supported by a pedigree that will simply never go out of style!



**KMEM PORSCHE ET**  
2018 NAILE GRAND CHAMPION MAINETAINER HEIFER  
MATERNAL SISTER TO DAM OF LOT 20



**KMEM PORSCHE ET**  
2018 IOWA STATE FAIR  
SUPREME CHAMPION 4-H BREEDING HEIFER  
MATERNAL SISTER TO DAM OF LOT 20



**BKMT GAME ON 227G ET**  
SIRE OF LOT 20

**BREED**  
MAINE ANGUS



**21**

**KMEM HEART N SOUL ET**

AMAA 565310 >>> DOB 2/24/25 >>> TATTOO 8102N >>> BREED MAINE ANGUS

PVF INSIGHT 0129

BOE EPIC

**PVF BLACKLIST 7077**



**CMCC HEARTBREAKER 081H**

PVF BLACKBIRD 3070

DUP ANASTASIA 324

- Next up is an extremely powerful Maine Angus daughter of PVF Blacklist 7077 that is further supported by the influence of CMCC Heartbreaker 081H, one of the rising stars in the donor pen at Moonen Cattle Company!
- CMCC Heartbreaker 081H is a daughter of the legendary BOE Epic that is from the famous DUP Anastasia 324 donor dam. 081H was the 2021 Cattlemen's Congress Reserve Grand Champion Junior Maine-Anjou Heifer for Koy Moonen.
- KMEM Heart N Soul ET is an absolute beast in terms of body mass, stoutness, and genuine power. She is huge footed, extremely sound, and offers the look of what a true brood cow should be built like. 8102N is the type and kind of female that any progressive cattlemen would be proud to own 100 head just like and will keep a program in the black. Bid with confidence, we are certain that her new owner will be pleased with the ROI that this female will generate!



**CMCC HEARTBREAKER 081H**  
2021 CATTLEMEN'S CONGRESS  
RESERVE GRAND CHAMPION MAINE-ANJOU HEIFER  
DAM OF LOT 21



**BOE EPIC**  
2018 NWSS  
GRAND CHAMPION MAINE-ANJOU BULL  
MATERNAL GRANDSIRE OF LOT 21

**PVF BLACKLIST 7077**  
SIRE OF LOT 21



**BREED**  
**SHORTHORN**  
**PLUS**



**22**

**AC MS NEW CRYSTAL 2513 ET**

ASA \*XAR4400076 >>> DOB 3/20/25 >>> TATTOO 2513 >>> BREED SHORTHORN PLUS

CFCC BLACK JACK 001

WHR SONNY 8114

**KR CASINO 6243**



**SULL LADY CRYSTAL434P-3 ET CL**

MALSONS SAVANNAH 27Y

AF MARGIES DREAM LADY 05 ET

- Here is a stunning blue roan female that is supported by one of the premier cow families in the Shorthorn breed! 2513 is sired by the legendary KR Casino 6243 and out of the iconic SULL Lady Crystal 434P-3 ET CL, one of the most well-known and respected matriarchs in the business that has produced countless high sellers and champions over the years!
- A maternal sister to this show stopping Shorthorn Plus female, S/N Lady Crystal Lottery 3100 ET, sold for \$90,000 in the Schrag/Nikkel Show Cattle "Family Event" Sale to Ryli Bivens of Texas.
- Another maternal sister, S/N RJC Lady Crystal Luna 326 ET, was selected as the 2023 NAILE Reserve Grand Champion Shorthorn Plus Heifer for Alexis Wright of West Virginia.
- This elite Shorthorn Plus female aligns two of the most influential individuals within their respective breed. It's hard to deny her genuine skeletal quality, stoutness, and overwhelming body dimension. As a bonus, AC Ms New Crystal 2513 ET, is without a doubt one of the most docile females in the entire sale offering. She is of senior year quality with a first-year showman disposition... don't miss out on a legitimate breed contender!

**RJC LADY CRYSTAL M223 ET**  
 \$56,500 MATERNAL SISTER TO LOT 22



**SULL LADY CRYSTAL 434P-3 ET CL**  
 LEGENDARY DAM OF LOT 22



**S/N LADY CRYSTAL LOTTERY 3100 ET**  
 \$90,000 MATERNAL SISTER TO LOT 22



**S/N RJC LADY CRYSTAL LUNA 326 ET**  
 2023 NAILE  
 RESERVE GRAND CHAMPION SHORTHORN PLUS HEIFER  
 MATERNAL SISTER TO LOT 22

**BREED**  
POLLED HEREFORD



**23**

## NCC LFTZ KGB SAYLOR 511N ET

AHA 44694428 >>> DOB 3/17/25 >>> TATTOO 511N >>> BREED POLLED HEREFORD

UPS SENSATION 2296 ET

CRR 719 CATAPULT 109

**KLD RW MARKSMAN D87 ET**



**NCC SAYLOR 001 ET**

RW MINDY 3078 6096

HAWK ENUFF BRITTANY 504

- We initiate a trio of Hereford females with a very impressive Polled Hereford heifer that is sired by the legendary sire of champions and high sellers, KLD RW Marksman D87 ET. Her dam is the highly proven and prolific NCC Saylor 001 ET, the CRR 719 Catapult 109 sired maternal sister to the Triple Crown winning NCC 754 Breckyn C1857. She was also the 2017 JNHE Grand Champion Polled Hereford Heifer for the Skiles Family of Texas.

- NCC Saylor 001 ET has become a staple in the donor pen for the Norvell Family of Oklahoma, producing countless high sellers and champions at every level. 001 is the dam of NCC Rhea 2058 ET, the 2023 JNHE Reserve Grand Champion Bred & Owned Heifer for Madilyn Norvell. She continued her winning ways in Oklahoma City when she was selected as the 2024 Cattlemen's Congress Grand Champion Polled Hereford Heifer. 2058 finished her dominant show career as the 2023-2024 AHA Show Heifer of the Year and was selected as the 2024 Tulsa State Fair Supreme Champion Junior Breeding Heifer!

- Other maternal sisters to 511N would include PSC NCC Gaia 3008 ET, the 2023 Western States National Hereford Show Grand Champion Polled Hereford Heifer for Cruz Colyer. 3008 was then selected as the 2024 NWSS Grand Champion Polled Hereford Heifer!

- 511N is one of the first ever daughters of KLD RW Marksman D87 ET from the prolific 001 donor. Since day one she has been a standout in terms of stoutness of bone, genuine base width, and overall power. Despite her added shape, she maintains an incredible look of balance and symmetry from the profile with extreme length and extension about her front third.

- A top shelf Polled Hereford heifer that is supported by generations of proven, predictable, and dominant champions!



**NCC RHEA 2058 ET**  
2024 TULSA STATE FAIR  
SUPREME CHAMPION JUNIOR BREEDING HEIFER  
MATERNAL SISTER TO LOT 23



**NCC RHEA 2058 ET**  
2024 CATTLEMEN'S CONGRESS  
GRAND CHAMPION POLLED HEREFORD HEIFER  
MATERNAL SISTER TO LOT 23



**PSC NCC GAIA 3008 ET**  
2024 NWSS  
GRAND CHAMPION POLLED HEREFORD HEIFER  
MATERNAL SISTER TO LOT 23

**BREED**  
POLLED HEREFORD



**24 LFTZ KGB GOLD LADY 510N ET**

AHA 44694352 >>> DOB 2/26/25 >>> TATTOO 510N >>> BREED POLLED HEREFORD

TFR KU ROLL THE DICE 1326

DKF RO CASH FLOW 0245 ET

**CH HIGH ROLLER 756**



**ECR HCC PCCC GOLD LADY 8940 ET**

CH MAGIE 8023

RV GOLDEN LADY 5064

- The second Polled Hereford heifer in this year's sale offering is a maternal sister to Bar C Classy Calista 244, the 2023 JNHE Grand Champion Polled Hereford Heifer for Ella Weldon. The dam of 510N is ECR HCC PCCC Gold Lady 8940 ET, a FULL SISTER to the dominant champion turned elite breeding bull, ECR Who Maker 210 ET!
- The dam of 510N, ECR HCC PCCC Gold Lady 8940 ET, has emerged as one of the leading donors in the Bar C Livestock breeding program of El Campo, Texas.
- This heavily pigmented Polled Hereford heifer offers extreme skeletal quality, a robust rib cage, and tremendous squareness of build off all four corners of her skeleton.
- In addition to her elite combination of pedigree and phenotype, 510N is suited for a showman of any age based on her laid-back disposition.
- LFTZ KGB Gold Lady 510N ET is a February born daughter of the iconic CH High Roller 756 ET, a proven sire of champions and high sellers. She is a loose made, extremely flexible female that is built with precision from the ground up. There is no doubt that she will be a competitive show heifer, however she has the genetic foundation to follow in the footsteps of the dominant matriarchs that line her pedigree!



**BAR C CLASSY CALISTA 244**  
2023 JNHE GRAND CHAMPION POLLED HEREFORD HEIFER  
MATERNAL SISTER TO LOT 24



**ECR WHO MAKER 210 ET**  
2014 NWSS GRAND CHAMPION POLLED HEREFORD BULL  
FULL BROTHER TO DAM OF LOT 24



**BREED**  
HORNED HEREFORD



**25**

**ELLA HIGH CLASS NELLY 5021 ET**

AHA 44694700 >>> DOB 3/17/25 >>> TATTOO 5021 >>> BREED HORNED HEREFORD

JDH AH STANDOUT 16G ET

EXR BANKROLL 8130 ET

**BK JET SMOOTH J18 ET**



**EXR HIGH CLASS KAT 2253 ET**

HAPP KOOL AID POINTS 1218 ET

EXR HIGH CLASS KAT 8249 ET

• The next heifer comes to us from Ella Weldon, a young Hereford breeder that has a tremendous passion for the breed and the cattle business as a whole! Ella and her family have exhibited cattle at a very high level over the past several years, and there is no doubt that she has led some of the very best Hereford cattle in the country. The dam of Ella High Class Nelly 5021 ET is no exception!

• EXR High Class Kat 2253 ET is a stunning ring eyed daughter of EXR Bankroll 8130 ET, the 2019 NWSS Reserve Grand Champion Horned Hereford Bull. The maternal side of her lineage traces to the legendary CHEZ Strawberry Wine ET 204Z, the 2014 NWSS Reserve Grand Champion Polled Hereford Heifer. EXR High Class Kat 2253 was the 2024 Cattlemen's Congress Reserve Grand Champion Horned Hereford Junior Heifer.

• The sire of 5021 is BK Jet Smooth J18 ET, the 2024 Cattlemen's Congress Grand Champion Polled Hereford Bull. He is one of the most unique sons of the legendary HAPP Kool Aid Points 1218 ET to ever surface. She is one of the high income and most important Hereford females in the entire breed. HAPP Kool Aid Points 1218 ET has produced countless high sellers, National Champions, and individuals of significant influence.

• A stunning Horned Hereford heifer that is big footed, stout featured and offers a look from the side that is simply undeniable. In our opinion, she will be a true force in the Horned division at every stage of her life. 5021 is backed by a pedigree that you can count on!



**EXR HIGH CLASS KAT 2253 ET**  
2024 CATTLEMEN'S CONGRESS  
RESERVE GRAND CHAMPION HEREFORD HEIFER  
DAM OF LOT 25



**BK JET SMOOTH J18 ET**  
2024 CATTLEMEN'S CONGRESS  
GRAND CHAMPION POLLED HEREFORD BULL  
SIRE OF LOT 25

**BREED**  
RED ANGUS



**26**

## KIRWAN STONY 5007

RAAA 5137237 >>> DOB 1/3/25 >>> TATTOO 5007 >>> BREED RED ANGUS

BROWN CRSB CONFIDENCE G1410

3SCC DOMAIN A163

**PIE HOLLYWOOD 222**



**C-BAR STONY 6H**

PIE 0105

C-BAR STONY 801F

• We have grown to appreciate and admire the Red Angus breed because of females like Kirwan Stony 5007! Last year we had the opportunity to work with Wyatt Durst and his family in marketing WD Lady Driven 450 ET. Madison Fisher selected her in last year's sale, and she has endured an extremely successful show career being selected as a division champion in both the junior and open shows at the 2025 Cattlemen's Congress. She was then selected as the 2025 HLSR Grand Champion Red Angus Heifer and this past summer was slapped 4th Overall Owned Heifer at the 2025 RAYE.

• Kirwan Stony 5007 is sired by the \$400,000 world-record selling Red Angus bull, PIE Hollywood 222, one of the most talked about and admired bulls in the industry! The maternal side of her lineage traces to the influence of arguably the most impressive Red Angus female in the breed, C-Bar Stony A302! For over a decade, A302 has been the "cover girl" for the Red Angus breed when it comes to maternal functionality, eye appeal, and productivity. A302 is a female that breeders and Red Angus enthusiasts from around the globe recognize and admire for her breed leading phenotype and maternal strength.

• The dam of 5007, C-Bar Stony 6H, is sired by the very impressive 3SCC Domain A163 stud that stands at Genex. 6H is a breathtaking female in the flesh that exemplifies skeletal integrity, body shape, udder design, and overall maternal function. She is now employed in the WD Cattle Company breeding program of Washington, Kansas.

• 5007 is near perfect in terms of her structural build, she is stout featured, bold in the shape of her forerib and offers tremendous progression of depth back into her rear rib and flank. Her unique phenotype is complimented by her royal lineage and elite number profile. She ranks among the elite 1% of the breed for WW, YW, ADG, REA; top 2% CW; top 5% GM; top 17% MILK; top 29% CED. A truly unique and valuable breeding piece that has the credentials to be a herd building female that will elevate any program to the next level!



**C-BAR STONY A302**  
LEGENDARY 3RD GENERATION DAM OF LOT 26



**PIE HOLLYWOOD 222**  
\$400,000 SIRE OF LOT 26

**BREED**  
PUREBRED  
SIMMENTAL



**27**

**LFTZ HAYLEIGH 502N**

ASA 4568069 >>> DOB 1/18/25 >>> TATTOO 502N >>> BREED PUREBRED SIMMENTAL

SVF STEEL FORCE S701

SO REMEDY 7F

**MR HOC BROKER**



**UDE HAYLEIGH 5K**

JM BF H25

KDP MISS HOYA HAYLEIGH

• We initiate the Simmental division with five direct daughters of the 2023-2024 PTP Show Heifer of the Year, UDE Hayleigh 5K, the powerful daughter of the \$530,000 SO Remedy 7F that is supported by the 2020-2021 Triple Crown Winning Purebred Simmental Heifer, KDP Miss Hoya Hayleigh!

• In her first outing, UDE Hayleigh 5K, was selected as the 2023 SD State Jackrabbit Memorial Grand Champion Heifer Ring B and Reserve Grand Champion Ring A. Her next trip to town was the National Western Stock Show where she was selected as the Reserve Champion Junior Heifer Calf. She then made her way to the Fort Worth Stock Show where she was slapped Grand Champion Purebred Simmental Heifer. UDE Hayleigh 5K continued her winning ways through the summer show season where she was selected as the 5th Overall Purebred Simmental Heifer at the AJSA National Classic in Des Moines, Iowa. She made a return trip to Des Moines for the Iowa State Fair where she was selected as the Grand Champion Open Simmental Heifer. Fast forward to October of 2023, UDE Hayleigh 5K dominated the American Royal when she was crowned the Grand Champion Purebred Simmental Heifer of both the junior and open shows! 5K rounded out the fall show season with another big win in Louisville, Kentucky. She was slapped Grand Champion Purebred Simmental Heifer at the National Simmental Show held in conjunction with the 2023 NAILE. Her final trip to the bright lights came in January of 2024 when she was selected as the NWSS Reserve Grand Champion Open Purebred Simmental Heifer.

• 502N is undoubtedly the POWER female of the offering that is unmatched in terms of stoutness of foot and bone. She is bold in her upper skeleton and possesses a donor cow look from every angle of evaluation. This January born female reminds us of her dominant dam at this stage of the game!



**UDE HAYLEIGH 5K**  
2023 NAILE  
GRAND CHAMPION PUREBRED SIMMENTAL HEIFER  
DAM OF LOTS 27-31



**MR HOC BROKER**  
TRIPLE CROWN WINNING PUREBRED SIMMENTAL BULL  
SIRE OF LOTS 27 & 28

**BREED**  
PUREBRED  
SIMMENTAL



**28**

## LFTZ HAYLEIGH 503N

ASA 4568070 >>> DOB 2/2/25 >>> TATTOO 503N >>> BREED PUREBRED SIMMENTAL

SVF STEEL FORCE S701

SO REMEDY 7F

**MR HOC BROKER**



**UDE HAYLEIGH 5K**

JM BF H25

KDP MISS HOYA HAYLEIGH

- Next up is the February born daughter of the iconic MR HOC Broker that is backed by the prolific UDE Hayleigh 5K, a female that has transformed from a dominant show heifer to a big-league donor dam. The influence of her maternal granddam, KDP Miss Hoya Hayleigh is everlasting.
- LFTZ Hayleigh 503N is a perfectly marked blaze faced daughter of 5K that has been a standout since day one! From the ground up she is built with precision. 503N offers a perfectly shaped foot design, ideal angles, tremendous flexibility, and the looseness of spine that is necessary to make a play at the largest and most competitive shows in the country.
- This first pair of ET flushmate sisters are sired by the Triple Crown winning MR HOC Broker, a sire that has left a substantial impact on the business. MR HOC Broker daughters have been instrumental in the success of some of the nation's top breeding programs.
- 503N is so elegant and refined about her front third as she ties her long, flat neck high at the top of her neatly laid in shoulder blade. She is clean chested and offers exceptional progression of depth back into her rear rib and flank. We have always admired the squareness of pin set that she possesses while maintaining a textbook set to her hip and hind leg. There is no doubt that 502N has the credentials both phenotypically and genetically to be a contender when it truly counts.
- Many of the early visitors that have gone through this year's offering are split between which of the two MR HOC Broker daughters they favor. The truth is...we are too! Some days we prefer 503N and other days we lean more towards her big sister, 502N. We encourage you to make the trip to Prague, Oklahoma to view this set of females with your own two eyes and pick your poison on October 26, 2025!



**UDE HAYLEIGH 5K**  
2023 AMERICAN ROYAL  
GRAND CHAMPION PUREBRED SIMMENTAL HEIFER  
DAM OF LOTS 27-31



**KDP MISS HOYA HAYLEIGH**  
2020 NAILE  
GRAND CHAMPION PUREBRED SIMMENTAL HEIFER  
MATERNAL GRANDDAM OF LOTS 27-31

**BREED**  
PUREBRED  
SIMMENTAL



**29**

**LFTZ HAYLEIGH 505N**

ASA 4568072 >>> DOB 3/25/25 >>> TATTOO 505N >>> BREED PUREBRED SIMMENTAL

W/C BANKROLL 811D

SO REMEDY 7F

**RJ TRUST FUND 212K**



**UDE HAYLEIGH 5K**

HARA'S KIM KARDASHIAN 1C  
"LADY KILLER"

KDP MISS HOYA HAYLEIGH

- 505N is the first of two ET flushmate sisters sired by the \$135,000 RJ Trust Fund 212K, one of the premier sons of the \$205,000 W/C Bankroll 811D in existence. RJ Trust Fund 212K was a featured Live Lot in the 17th Annual Embryos on Snow that sold to Cowan Cattle Company of Wisconsin.

- A striking blaze faced female that is massive in terms of her features, bold in the shape of her rib cage, big topped, stout hipped, and flawless in the set to her hip and hind leg. While she possesses an abundance of power, genuine shape, and real-world substance, it is also noteworthy that she parks and poses with a look of quality from the side that is immeasurable!

- The dam of RJ Trust Fund 212K is the legendary Hara's Kim Kardashian 1C, more commonly known across the business as "Lady Killer". The number of champions, high sellers, and individuals of influence that she has produced across breed lines is simply unmatched by any other donor in the industry.

- This March born show heifer/donor prospect has the uniqueness of build and style, combined with a world class pedigree that aligns some of the most impressive individuals in the breed! There is no questioning her future success on the tanbark and in production. Bid with confidence, 505N is the type of female that will make someone look awfully smart a year from now!



**UDE HAYLEIGH 5K**  
2023 FWSS  
GRAND CHAMPION PUREBRED SIMMENTAL HEIFER  
DAM OF LOTS 27-31



**RJ TRUST FUND 212K**  
\$135,000 SIRE OF LOTS 29 & 30

**BREED**  
**PUREBRED**  
**SIMMENTAL**



**30**

**LFTZ HAYLEIGH 506N**

ASA 4568073 >>> DOB 4/5/25 >>> TATTOO 506N >>> BREED PUREBRED SIMMENTAL

W/C BANKROLL 811D

SO REMEDY 7F

**RJ TRUST FUND 212K**



**UDE HAYLEIGH 5K**

HARA'S KIM KARDASHIAN 1C  
 "LADY KILLER"

KDP MISS HOYA HAYLEIGH

- 506N is the little sister to 505N. This pair of ET flushmate sisters are sired by the iconic RJ Trust Fund 212K and from the powerhouse donor dam, UDE Hayleigh 5K. The genetic consistency, quality, and earning potential that lies within this set of Purebred Simmental heifers is immeasurable!
- Another striking blaze faced female that has the "wow" factor from every angle of evaluation. 506N is the youngest female in the offering from the many times National Champion, UDE Hayleigh 5K, that will sell on October 26, 2025, in Prague, Oklahoma!
- While all five daughters of the prolific 5K offer different strengths, it is safe to say that LFTZ Hayleigh 506N is without question the longest fronted, neatest chested, and most exotic in terms of her neck attachment and front third design. She is so elevated and attractive about her head and neck yet laid back and smooth in her shoulder and knee design. This April born show heifer prospect is bold in her rib cage, big hiped, and wide pinned.
- It is up to you to decide which female from this legendary champion best suites your taste!



**UDE HAYLEIGH 5K**  
 2023 IOWA STATE FAIR  
 GRAND CHAMPION PUREBRED SIMMENTAL HEIFER  
 DAM OF LOTS 27-31



**BREED**  
PUREBRED  
SIMMENTAL



**31**

**LFTZ HAYLEIGH 504N**

ASA 4568071 >>> DOB 3/10/25 >>> TATTOO 504N >>> BREED PUREBRED SIMMENTAL

EGL FIRESTEEL 103F

SO REMEDY 7F

**WHF/JS/CCS WOODFORD J001**



**UDE HAYLEIGH 5K**

WHF SUMMER 365C

KDP MISS HOYA HAYLEIGH

- LFTZ Hayleigh 504N is the one and only daughter of WHF/JS/CCS Woodford J001 in this year's offering, but we are all in on her basic build, fundamental correctness, and elite presence from the side!
- WHF/JS/CCS Woodford J001 is the son of EGL Firesteel 103F that is supported by the \$1 million+ producing WHF Summer 365C, the 2017 American Royal Supreme Champion Junior Breeding Heifer for Chesney Steenhoek. We raised a maternal sister to WHF/JS/CCS Woodford J001, CCS/JS/LFTZ Summer L378, that was selected as the 2025 American Royal and 2025 NAILE Grand Champion Purebred Simmental Heifer for Brody Wennell.
- 504N is the only solid black daughter of 5K in the sale and is one that reminds us so much of her dam at this stage of the game when it comes to body, mass, and overall practicality. She is so up headed and feminine about her front third yet offers a stout skull design that feeds back into a bold center body shape with an abundance of depth and dimension.
- 504N is so loose in her spine, soft bodied, and flexible in her lower joints. She is a big footed female that is stout featured and offers a three-dimensional build throughout.
- Generations of National Champions line her pedigree and we believe it is safe to say that she possesses the premium blend of function and form necessary to follow in the footsteps of her banner hanging ancestors!



**UDE HAYLEIGH 5K**  
2023 AJSA NATIONAL CLASSIC  
5TH OVERALL PUREBRED SIMMENTAL HEIFER  
DAM OF LOTS 27-31



**WHF/JS/CCS WOODFORD J001**  
2023 NAILE  
GRAND CHAMPION PERCENTAGE SIMMENTAL BULL  
SIRE OF LOT 31

**BREED**  
PUREBRED  
SIMMENTAL



**32**

## FLAR LFTZ BECKY 527N ET

ASA 4573269 >>> DOB 3/26/25 >>> TATTOO 527N >>> BREED PUREBRED SIMMENTAL

WLE COPACETIC E02

PROFIT

**TJSC COPING WITH DESTINY 9K**



**UDE KANSA 40F**

TJSC DIAMONDS DESTINY 134C

TJSC KANSA 823B

• The Larsen Family of Valentine, Nebraska have been long-time friends and supporters of our program. We have enjoyed working with them hand in hand to market their cattle on an annual basis. This multi-breed family owned and operated program is home to some of the most prolific donors in the business!

• FLAR LFTZ Becky 527N ET is the first of several daughters from the incredible UDE Kansa 40F, the Profit daughter from the many times National Champion TJSC Kansa 823B. 40F is more commonly known as "Becky" across the industry.

• The sire of 527N is the 2024 Cattlemen's Congress Supreme Champion Bull, TJSC Coping With Destiny 9K, one of the truly remarkable breeding bulls to surface in recent years!

• 527N is an incredibly stout featured, bold ribbed, flexible show heifer/brood cow prospect. We appreciate the added balanced and maternal function that this March born Purebred female brings to the table!



**TJSC COPING WITH DESTINY 9K**  
2024 CATTLEMEN'S CONGRESS  
SUPREME CHAMPION BULL  
SIRE OF LOT 32



**UDE KANSA 40F**  
DAM OF LOTS 32-36

**BREED**  
PUREBRED  
SIMMENTAL



**33**

**FLAR LFTZ BECKY 521N ET**

ASA 4573263 >>> DOB 3/12/25 >>> TATTOO 521N >>> BREED PUREBRED SIMMENTAL

KRJ DAKOTA OUTLAW G974

PROFIT

**NEXT LEVEL**



**UDE KANSA 40F**

KROL CAEDENCE C37

TJSC KANSA 823B

- FLAR LFTZ Becky 521N ET is the first of two ET flushmate sisters from the impressive 40F donor that are sired by the widely popular AI sire known as Next Level!
- 521N is a huge footed, very flexible female that is long and extended from her blade forward, while maintaining an abundance of body mass, shape, and genuine skeletal quality.
- 40F was a highly successful show heifer for Fletcher Larsen that was a many times champion turned dominant producer.
- A maternal sister to 521N, FLAR Becky 307L ET, was the 2023 OYE Reserve Grand Champion Purebred Simmental Heifer for Addison Kennedy.
- A top shelf female that is supported by a royal pedigree that aligns some of the most influential individuals in the breed!



**FLAR BECKY 307L ET**  
2023 OYE  
RESERVE GRAND CHAMPION PUREBRED SIMMENTAL HEIFER  
MATERNAL SISTER TO LOTS 32-36



**FLAR BECKY 307L ET**  
MATERNAL SISTER TO LOTS 32-36

**BREED**  
PUREBRED  
SIMMENTAL



**34**

## FLAR LFTZ BECKY 522N ET

ASA 4573264 >>> DOB 4/10/25 >>> TATTOO 522N >>> BREED PUREBRED SIMMENTAL

KRJ DAKOTA OUTLAW G974

PROFIT

**NEXT LEVEL**



**UDE KANSA 40F**

KRDL CAEDENCE C37

TJSC KANSA 823B

- 522N is the April born daughter of "Becky" that is sired by the world-renowned stud known as Next Level!
- The dam of 522N, UDE Kansa 40F, was successfully campaigned by Fletcher Larsen to several victories, however her most recognizable success has come once entering the production phase of her life. The dam of UDE Kansa 40F, TJSC Kansa 823B, was the 2015 AJSA National Classic Reserve Grand Champion Purebred Simmental Heifer, 2015 American Royal Reserve Grand Champion Purebred Simmental Heifer, 2015 NAILE Reserve Grand Champion Purebred Simmental Heifer, and 2016 NWSS Reserve Grand Champion Purebred Simmental Heifer!
- UDE Kansa 40F is an ET flushmate sister to UDE Profit 67F, the resident herd sire at Udell Cattle Company that is known as "Code Red".
- Power, poise, and profit earning potential is all inclusive with this dynamic female!



**TJSC KANSA 823B**  
2015 AJSA NATIONAL CLASSIC  
RESERVE GRAND CHAMPION  
PUREBRED SIMMENTAL HEIFER  
MATERNAL GRANDDAM OF LOTS 32-36



**NEXT LEVEL**  
SIRE OF LOTS 33 & 34

**BREED**  
1/2 SM 1/2 AN



**35**

**FLAR LFTZ BECKY'S KRISSEY 525N**

ASA 4573267 >>> DOB 3/17/25 >>> TATTOO 525N >>> BREED 1/2 SM 1/2 AN

SSF ON POINT 4028

PROFIT

**ROSE MC ENCORE 0463**



**UDE KANSA 40F**

BURNS ELBA 1454

TJSC KANSA 823B



**ROSE MC ENCORE 0463**  
\$240,000 VALUED SIRE OF LOT 35

• Come back to the auction!!! Ladies and gentlemen, it is with great excitement and enthusiasm that we introduce you to FLAR LFTZ Becky's Krissy 525N, a direct daughter of UDE Kansa 40F "Becky" that is sired by the \$240,000 valued ROSE MC Encore 0463!

• From the first time that I laid eyes on 525N, I knew that she was a truly special individual that had as much upside as any Percentage Simmental heifer I had seen this summer. While this is a bold statement, I can honestly say that this female hit me hard and continues to impress me more and more each day of her life.

• In terms of skeletal quality, 525N is flawless at the surface. She is huge footed, stout boned, and near perfect in her angles. She reaches and flexes off both ends of her skeleton with ease, maintaining an incredible look from the side. She is loose in her spine yet still offers more than enough power and shape. We love the squareness and stoutness to her hip, the set to her hind leg, and the progression of depth from her chest floor back into her rear rib and flank.

• 525N is a maternal sister to the \$95,000 FLAR Becky 315L, the 2024 Cattlemen's Congress Reserve Grand Champion Percentage Simmental Heifer that was campaigned by Mercedes Ferree.

• FLAR LFTZ Becky's Krissy 525N is a truly special individual that has the presence, pedigree, and skeletal quality necessary to be a force at the largest and most competitive shows in the nation. She is a barn favorite, and we feel fortunate to have the opportunity to be a part of her journey. Come join the team and let's make memories that will last a lifetime!



**FLAR BECKY 315L ET**  
\$95,000 MATERNAL SISTER TO LOT 35

**BREED**  
1/2 SM 1/2 AN



**36**

## FLAR LFTZ BECKY 530N ET

ASA 4573270 >>> DOB 4/16/25 >>> TATTOO 530N >>> BREED 1/2 SM 1/2 AN

SCC TRADITION OF 24

PROFIT

**SCC SCH 24 KARAT 838**



**UDE KANSA 40F**

FCF PROVEN QUEEN 419

TJSC KANSA 823B

- The fifth and final daughter of UDE Kansa 40F is FLAR LFTZ Becky 530N ET, a FULL SISTER to the \$95,000 FLAR Becky 315L ET!
- Sired by the iconic SCC SCH 24 Karat 838, this dynamic April born SimAngus female offers an incredible look of quality and style from the side. She is long and extended about her front third, clean chested, and offers an aggressive progression of depth from her chest floor back into her rear rib and flank.
- Her full sister was selected as the 2024 Cattlemen's Congress Reserve Grand Champion Percentage Simmental Heifer for the Ferree Family of Indiana.
- It is hard to make cattle with her kind of look and quality from the side be three-dimensional and shapely from behind, however this unique Percentage Simmental female has accomplished this feat. Backed by a proven pedigree, 530N has the credentials to frequent the backdrop on a regular basis!



**FLAR BECKY 315L ET**  
2024 CATTLEMEN'S CONGRESS  
RESERVE GRAND CHAMPION  
PERCENTAGE SIMMENTAL HEIFER  
\$95,000 FULL SISTER TO LOT 36

**BREED**  
1/2 SM 1/2 AN



**37**

**LFTZ DERBY GIRL 513N**

ASA 4568075 >>> DOB 3/1/25 >>> TATTOO 513N >>> BREED 1/2 SM 1/2 AN

GATEWAY FOLLOW ME F163

W/C RELENTLESS 32C

**CONLEY A 1**



**JPV RJ W/C DERBY GIRL 9209G ET**

EXAR PRINCESS 6741

W/C RJ MISS DERBY GIRL

- LFTZ Derby Girl 513N is a powerfully constructed daughter of the \$100,000 Conley A 1 that is supported by JPV RJ W/C Derby Girl 9209G ET, one of the leading donors here at Lafrentz Cattle Company.
- 513N is an incredibly soft bodied, bold ribbed, easy keeping SimAngus female that offers a strong maternal look from every angle of evaluation. She is big footed, stout boned, and square built off all four corners.
- The dam of 513N, 9209G, is a daughter of W/C Relentless 32C that is further supported by the influence of the \$8 million+ producing Miss Werning KP 8543U donor. Her maternal pedigree is supported by not one, but two shots of the legendary 8543U!
- A big-time half-blood show heifer/brood cow prospect that has the maternal functionality, practical body style, and flawless skeletal build that is necessary to be a force on the tanbark and in production!



**CONLEY A 1**  
\$100,000 SIRE OF LOT 37



**MISS WERNING KP 8543U**  
\$8 MILLION+ PRODUCING  
3RD GENERATION DAM OF LOTS 37-39



BREED  
PUREBRED  
SIMMENTAL



38

## LFTZ DERBY GIRL 515N

ASA 4568077 >>> DOB 1/29/25 >>> TATTOO 515N >>> BREED PUREBRED SIMMENTAL

KRJ DAKOTA OUTLAW G974

W/C RELENTLESS 32C

**NEXT LEVEL** X

**JPV RJ W/C DERBY GIRL 9209G ET**

KRDL CAEDENCE C37

W/C RJ MISS DERBY GIRL

- 515N is another daughter of JPV RJ W/C Derby Girl 9209G ET that deserves a serious look on sale day! This daughter of the powerful Next Level is built with tremendous stoutness at the ground, while maintaining a bold body shape and extremely stout hip design.
- The females that can be identified on the southside of her pedigree are responsible for influencing a large portion of the Simmental database across the country. GCF Miss Roller Girl Z24 is a FULL SISTER to the maternal granddam of LFTZ Derby Girl 515N. GCF Miss Roller Girl Z24 was the 2013 AJSA National Classic Grand Champion Purebred Simmental Heifer and 2014 NWSS Grand Champion Purebred Simmental Heifer.
- A maternal sister to the maternal granddam of 515N is the iconic W/C Miss Angel 2870Z, the 2014 FWSS Grand Champion Purebred Simmental Heifer.
- Backed by a pedigree that is rich in history and tradition!



**GCF MISS ROLLER GIRL Z24**  
2014 NWSS

GRAND CHAMPION PUREBRED SIMMENTAL HEIFER  
FULL SISTER TO MATERNAL GRANDDAM OF LOTS 37-39



**W/C MISS ANGEL 2870Z**  
2014 FWSS

GRAND CHAMPION PUREBRED SIMMENTAL HEIFER  
MATERNAL SISTER TO MATERNAL GRANDDAM OF LOTS 37-39



**W/C RJ MISS DERBY GIRL**  
MATERNAL GRANDDAM OF LOTS 37-39

**BREED**  
PUREBRED  
SIMMENTAL



**39**

**LFTZ DERBY GIRL 514N**

ASA 4568076 >>> DOB 2/27/25 >>> TATTOO 514N >>> BREED PUREBRED SIMMENTAL

W/C BANKROLL 811D

W/C RELENTLESS 32C

**RJ TRUST FUND 212K**



**JPV RJ W/C DERBY GIRL 9209G ET**

HARA'S KIM KARDASHIAN 1C  
"LADY KILLER"

W/C RJ MISS DERBY GIRL

• LFTZ Derby Girl 514N is another top shelf daughter of JPV RJ W/C Derby Girl 9209G ET! 514N is sired by the \$135,000 RJ Trust Fund 212K, one of the greatest sons of the legendary W/C Bankroll 811D in existence. His first calf crop exceeded the wildest expectations and the sophomore class of progeny sired by RJ Trust Fund 212K are even better than anyone could have ever imagined!

• The number of influential individuals that are supported by the matriarchs that line her pedigree is simply staggering. We love the skeletal quality, flexibility, and stoutness that this February born Purebred Simmental female possesses.

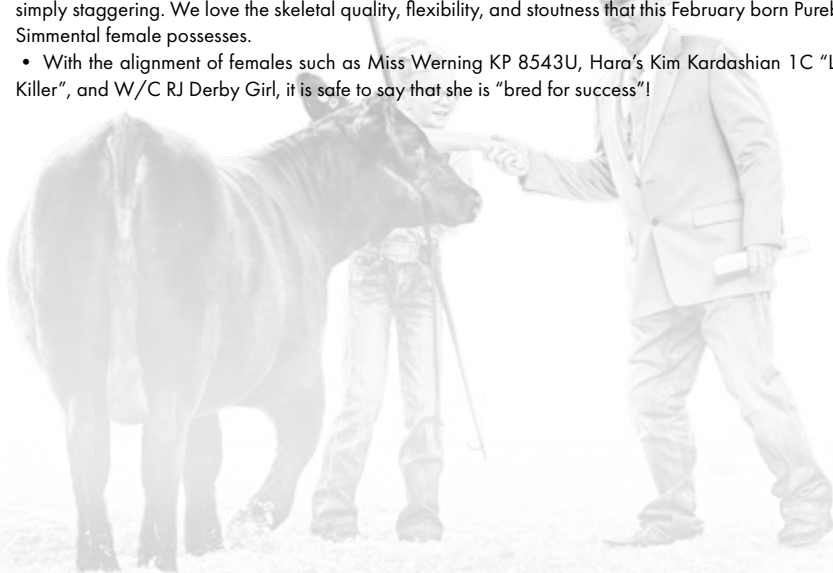
• With the alignment of females such as Miss Werning KP 8543U, Hara's Kim Kardashian 1C "Lady Killer", and W/C RJ Derby Girl, it is safe to say that she is "bred for success"!



**W/C BANKROLL 811D**  
\$205,000 MATERNAL BROTHER  
TO MATERNAL GRANDAM OF LOTS 37-39



**W/C MISS ANGEL 2870Z**  
MATERNAL SISTER  
TO MATERNAL GRANDAM OF LOTS 37-39



**BREED**  
PUREBRED  
SIMMENTAL



**40**

## LFTZ RUDY 512N

ASA 4568074 >>> DOB 4/1/25 >>> TATTOO 512N >>> BREED PUREBRED SIMMENTAL

HPF/HILL UPRISING C104

WLE COPACETIC E02

**SO REMEDY 7F**



**WEIS MISS RUDY 211J**

B&K CREAM SODA 8D

JPLF/RBS YOUR THE ONE

- Two years ago, we had the opportunity to purchase Weis Miss Rudy 211J from the Weis Cattle breeding program of Saint Ansgar, Iowa. 211J has become a pivotal member of the donor pen here at Lafrentz Cattle Company.
- 211J is a FULL SISTER to Weis Miss Lilly 35J, the 2022 American Royal Reserve Grand Champion Purebred Simmental Heifer and 2023 Cattlemen's Congress Grand Champion Purebred Simmental Heifer for the Roeder Family of Illinois.
- 512N is a stunning blaze faced daughter of the \$530,000 SO Remedy 7F, the 2021 Cattlemen's Congress Grand Champion Purebred Simmental Bull that has evolved into one of the greatest maternal sires that the Simmental breed has EVER seen!
- A very futuristic build and body style supports this elite pedigreed Purebred Simmental show heifer prospect. 512N is a product of our program!



**WEIS MISS RUDY 211J**  
DAM OF LOT 40



**WEIS MISS LILLY 35J**  
2023 CATTLEMEN'S CONGRESS  
GRAND CHAMPION PUREBRED SIMMENTAL HEIFER  
FULL SISTER TO DAM OF LOT 40



**JPLF/RBS YOUR THE ONE**  
MATERNAL GRANDDAM OF LOT 40

**BREED**  
1/2 SM 1/2 AN



**41**

**SGS SUCH A FLIRT 5012N**

ASA 4569927 >>> DOB 3/18/25 >>> TATTOO 5012N >>> BREED 1/2 SM 1/2 AN

SSF ON POINT 4028

MR HOC BROKER

**ROSE MC ENCORE 0463**



**JS FLIRT AWAY 52H**

BURNS ELBA 1454

JS FLIRT A-WAY 59Y

- S&S Such A Flirt 5012N is a very unique half-blood Simmental female that our good friend Tim Schaefer sent down from Hagerstown, Indiana.
- 5012N is sired by the \$240,000 valued ROSE MC Encore 0463 and backed by a FULL SISTER to the legendary JS Black Satin 9B "Boots" donor dam!
- "Boots" was the 2015 AJSA National Classic Grand Champion Purebred Simmental Heifer, 2015 American Royal Grand Champion Purebred Simmental Heifer, 2015 NAILE Grand Champion Purebred Simmental Heifer, and 2016 NWSS Grand Champion Purebred Simmental Heifer. Her greatest accolades came after her show career, as "Boots" has created her own legacy within the Simmental breed!
- 5012N is a big footed, stout boned, bold centered female that is loaded with substance, power, and genuine skeletal quality. She is supported by a pedigree on the maternal side of her lineage that will simply NEVER go out of style!



**JS BLACK SATIN 9B "BOOTS"**  
2015-2016 TRIPLE CROWN WINNING  
PUREBRED SIMMENTAL HEIFER  
FULL SISTER TO DAM OF LOT 41



**JS FLIRT A-WAY 59Y**  
MATERNAL GRANDDAM OF LOT 41



**JS FLIRT AWAY 52H**  
DAM OF LOT 41

**BREED**  
1/2 SM 1/2 AN



**42**

**BFSC DAZZLER S12N**

ASA 4572939 >>> DOB 1/16/25 >>> TATTOO S12N >>> BREED 1/2 SM 1/2 AN

SSF ON POINT 4028

SO REMEDY 7F

**ROSE MC ENCORE 0463**



**BFSC BOBBY DAZZLER 512K**

BURNS ELBA 1454

OBCC LEGEND S12X

• BFSC Dazzler S12N is another high-end half-blood Simmental show heifer prospect that is sired by the \$240,000 valued ROSE MC Encore 0463. The maternal side of her pedigree traces to the influence of the \$50,000 OBCC Legend S12X, one of the most prolific and dominant producing females to ever work in the Owen Bros. Cattle Company breeding program of Missouri.

• The dam of S12N is a maternal sister to the \$78,000 OBCC Legend 119B, one of the most dominant show heifers to ever carry the OBCC prefix!

• Another maternal sister to the dam of S12N is OBCC Legend 138B, a resident donor that works for Owen Bros. Cattle Company and RJ Cattle Company. Her maternal pedigree is also supported by the influence of the \$530,000 SO Remedy 7F, the 2021 Cattlemen's Congress Grand Champion Purebred Simmental Bull.

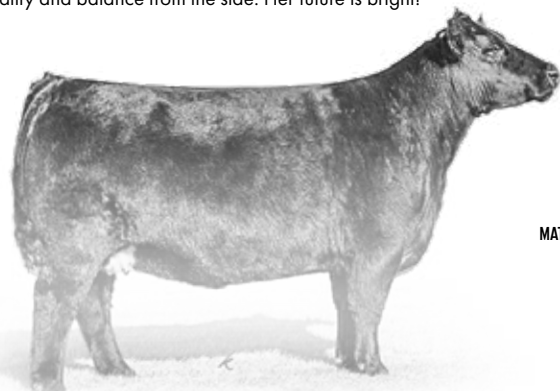
• One of our favorite half-blood Simmental females in this year's offering that offers an elite look of quality and balance from the side. Her future is bright!



**OBCC LEGEND 138B**  
MATERNAL SISTER TO DAM OF LOT 42



**OBCC LEGEND 119B**  
2014 AMERICAN ROYAL  
RESERVE GRAND CHAMPION  
PUREBRED SIMMENTAL HEIFER  
MATERNAL SISTER TO DAM OF LOT 42



**OBCC LEGEND S12X**  
MATERNAL GRANDDAM OF LOT 42

**BREED**

1/2 SM 1/4 AN 1/4 LM

**43****SGS BTOM BLACK BETTY 5052N**

ASA 4569926 &gt;&gt;&gt; DOB 2/11/25 &gt;&gt;&gt; TATTOO 5052N &gt;&gt;&gt; BREED 1/2 SM 1/4 AN 1/4 LM

SVF STEEL FORCE S701

SILVEIRAS STYLE 9303

**MR HOC BROKER****JSZC TSSC LARISSA 49G ET**

JM BF H25

RIVERSTONE CHARMED

• In recent history you would be hard pressed to find a female and her direct derivatives that have made such a rapid and immense impact on an entire breed in the way Riverstone Charmed has within the Limousin business. Her own show career was decorated with countless victories. "Larissa" was the impressive Triple Crown winning Limousin female that was ultimately slapped as the Supreme Champion Junior female at the 2016 North American International Livestock Exposition. Her name will be eternally etched in the record books as the first female to win that title in her own right and go on to raise a female to win that same converted title, that occurred in 2021 with Sara Sullivan's maternal sister to JSZC TSSC Larissa 49G ET.

• JSZC TSSC Larissa 49G ET created a nationwide buzz when she was a featured open heifer calf on the Schaeffer-Tice 2019 Pasture Sale. She became one of the highest valued Lim-Flex females in recent history and went on to be successfully campaigned by Bailey Thomson of Westport, Indiana. It didn't take long for 49G to live up to the hype when she was selected as the 2019 NAILE Grand Champion Limousin Heifer, 2020 NULSC Grand Champion Lim-Flex heifer, 2020 American Royal Grand Champion Limousin Heifer, and 2020 IN State Fair Reserve Supreme Champion 4-H Breeding Heifer. However, the most impressive accomplishments of 49G have been revealed during the production phase of her career!

• S&S BTOM Black Betty 5052N is a FULL SISTER to the Clark Family's S&S NXF TSSC Jennifer Anniston, the \$128,000 sale feature that sold in on the Schaeffer-Tice 2023 Pasture Sale! As a heifer calf she won her division at the 2023 KILE and 2023 American Royal, she was also a reserve division champion at the 2023 NAILE and was Reserve Supreme Female at the 2023 Oklahoma State AGR Winter Bonanza. She went on to be selected as the 2024 AJSA National Classic 4th Overall Percentage Simmental Heifer in Tulsa, Oklahoma!

• 5052N is a stunning blaze faced daughter of the Triple Crown winning MR HOC Broker from the iconic 49G donor. Her skeletal quality is second to none, while maintaining a robust rib cage, stout hip structure, and an incredible look of balance from the side.

• Invest with the utmost confidence... she's the kind that will win early and often!



**JSZC TSSC LARISSA 49G ET**  
2020 INDIANA STATE FAIR  
RESERVE SUPREME CHAMPION 4-H BREEDING HEIFER  
DAM OF LOT 43



**TSSL SOMETHING SPECIAL 3108L ET**  
2024 NAILE  
RESERVE GRAND CHAMPION LIM-FLEX HEIFER  
MATERNAL SISTER TO LOT 43



**S&S NXF TSSC JENNIFER ANISTON**  
2024 AJSA NATIONAL CLASSIC  
4TH OVERALL PERCENTAGE SIMMENTAL HEIFER  
FULL SISTER TO LOT 43

BREED  
LIM-FLEX



44

## CWNC TSSL LADY BADGER 28N

NALF PENDING >>> DOB 2/25/25 >>> TATTOO 28N >>> BREED LIM-FLEX

SSF ON POINT 4028

SILVEIRAS STYLE 9303

ROSE MC ENCORE 0463



JSZC HH TSSC LARISSA 101G ET

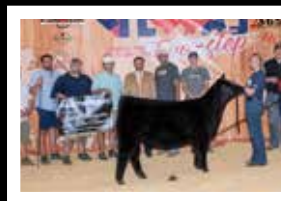
BURNS ELBA 1454

RIVERSTONE CHARMED

- The next female is an incredible Lim-Flex that is straight from the heart of the Schaeffer Show Cattle breeding program!
- A dynasty cannot be created with just a single member, and there is no doubting the consistency of what the Riverstone Charmed cow has done to propel many of the nation's most elite show cattle families into the winner's circle. The Silveiras Style 9303 x Riverstone Charmed mating has become one of the most lucrative combinations of pedigrees in the industry!
- JSZC HH TSSC Larissa 101G ET was the 2021 OH State Fair Reserve Supreme Champion Junior Breeding Heifer for Mackenzie Neal. 101G has become a dominant producer, just like her world-famous dam and maternal sisters.
- CWNC TSSL Lady Badger 28N is sired by the \$240,000 valued ROSE MC Encore 0463 and backed by the everlasting influence of 101G, therefore making her a maternal sister to Sara Sullivan's MKLN 1105J, the 2022 NJLSC Grand Champion Lim-Flex Heifer!
- 28N is a wildly unique featured Lim-Flex female that has been blessed with extreme hair quality as a bonus. She is high tying in her neck attachment, clean chested, flat shouldered, bold ribbed, and near flawless in the set to her hip and hind leg. It's hard to deny her presence when set into motion, as she reaches and flexes off both ends of her skeleton with true confidence.
- Breed for breed and pound for pound, 28N offers as much upside and future earning potential as any female that will sell on October 26, 2025. She is a legitimate breed contender!



JSZC HH TSSC LARISSA 101G ET  
2021 OHIO STATE FAIR  
SUPREME CHAMPION JUNIOR BREEDING HEIFER  
DAM OF LOT 44



MKLN 1105J  
2022 NJLSC GRAND CHAMPION LIM-FLEX HEIFER  
MATERNAL SISTER TO LOT 44



RIVERSTONE CHARMED "LARISSA"  
2016 NAILE  
SUPREME CHAMPION JUNIOR BREEDING HEIFER  
MATERNAL GRANDDAM OF LOTS 43 & 44



SUNDAY, OCTOBER 26, 2025 . 5 P.M.