

*The*  
**ADVANTAGE**

PRODUCTION SALE



SATURDAY, OCTOBER 18, 2025 • 6 O'CLOCK IN THE EVENING • SIOUX CITY, IOWA



UDE SARAS DREAM 4001  
2024 BADGER BRAWL  
SUPREME CHAMPION RING A & RES. SUPREME RING B  
CONGRATULATIONS SLOANE CURTINI

# Sale

## SCHEDULE

FRIDAY, OCTOBER 17

**9:00 AM**

CATTLE ON DISPLAY AND AVAILABLE  
FOR VIEWING ALL DAY

**6:00 PM**

PRE-SALE SOCIAL

SATURDAY, OCTOBER 18

**9:00 AM**

CATTLE ON DISPLAY AND AVAILABLE  
FOR VIEWING ALL DAY

**4:00 PM**

DINNER SERVED

**6:00 PM**

*The*  
**ADVANTAGE**  
PRODUCTION SALE



ONLINE BIDDING

View the sale from your phone, tablet, or desktop computer and bid with confidence!

Visit [www.CCI.live](http://www.CCI.live) for complete sale information and online registration.

405.400.9505 | CCI.Live

## SALE DAY CONTACTS

**Mitchell Udell**, 712.899.7485  
**Greg Van Zee**, 712.253.0004  
**Bret Udell**, 712.251.2527  
**Hannah Udell**, 325.668.4895

## SALE MANAGEMET INNOVATION AG MARKETING, LLC

**Graham Blagg**, 530.913.6418  
**Jered Shipman**, 806.983.7226  
**Tim Anderson**, 605.682.9343

## AUCTIONEER

**Jered Shipman**, 806.983.7226

## RING SERVICE

**Austin Brandt, Lee AgriMedia**, 712.621.1829  
**Kirby Goettsch, Special Assignment**, 605.380.3939  
**Kent Jaecke, Special Assignment**, 405.408.2440  
**Kris Pederson, Special Assignment**, 701.339.0305  
**Wyatt Durst, CCI.Live**, 785.541.0904

## SALE CONSULTANTS

**Cory Altena**, 605.366.0400  
**Cole Greiman**, 641.494.4570  
**Matt Johnson**, 712.540.1615  
**Cash Langford**, 254.631.3618  
**Wayne Ohlrichs**, 402.649.6911  
**Barb Ohlrichs**, 402.649.5804  
**Jeff Paulsen**, 563.212.9944

## SALE LOCATION

**SUE ANN FARMS**  
4800 Buckwalter Drive  
Sioux City, IA 51108

## LODGING

**HAMPTON INN & SUITES**  
712.587.6984  
5555 Sergeant Rd  
Sioux City, IA 51106

## HILTON GARDEN INN SIOUX CITY RIVERFRONT

712.255.4200  
1132 Larsen Park Rd  
Sioux City, IA 51103

## AIR TRAVEL

**Sioux Gateway Airport**, 12 miles  
**Sioux Falls Regional Airport**, 94 miles  
**Omaha International Airport**, 100 miles

## CUSTOMER SERVICE

Customer service and the day-to-day preparation of showing is something that we are very passionate about. We want to work with our customers and are always willing to lend a helping hand. If you would like to have your heifer clipped throughout the year prior to ANY show, you are welcome to bring the cattle back to Udell Cattle Company at no additional cost to be clipped by one of our talented team members. Advice relating to breeding, feeding, daily care, and/or any question you may have is always welcome. We are here to make your project a successful and enjoyable venture for your family.

## TERMS & CONDITIONS

The terms of the sale are cash or good check payable immediately upon the conclusion of the sale before animals will be transferred or removed from the sale facility. Cattle sell under the standard terms of their respective breed association. All sales are final, and the cattle will become the property of the buyer when the auctioneer says "SOLD". All females are sold as sound breeders. Seller guarantees each female to produce a live calf or transferrable embryos.

## REGISTRATION PAPERS

Registration papers will be transferred upon completion of payment for purchases. Please let the clerk know at the time of settlement how you wish to have your purchase(s) transferred. If you need your registration paper transfers expedited, please make plans to make settlement the night of the sale.

**Hannah Udell**, 325.668.4895

## INSURANCE

All cattle sold will become the responsibility of the buyer as soon as they are sold. To properly insure your investments, **James F. Bessler, Inc.**, 815.762.2641.

## SUPPLEMENTAL INFORMATION

A supplement sheet and sale order will be available with up-to-date information the day prior to the sale. All announcements made on the sale block as well as updates to the supplement sheet will take precedence over material listed in this catalog.

## HERD HEALTH

All of the cattle selling will be ready for immediate shipment and accompanied by proper health certificates. Udell Cattle Company has a full vaccination program.

## LIABILITY

All persons who attend the sale do so at their own risk, legal or otherwise, for their safety or for behavior of the animals. Udell Cattle Company, the sale management firm, and the sale staff assume no liability for property loss or any accident that may occur.

## LOAD OUT & TRUCKING

Load out will begin at the conclusion of the sale. We ask that you pick up your purchases within a reasonable time. We are happy to assist you with reliable and affordable trucking arrangements. However, we assume no responsibility for trucking rates.

## RETAINED FLUSH/CELL LINE

Udell Cattle Company reserves the right to two successful flushes at the buyer's convenience and seller's expense. Udell Cattle Company reserves the right to the DNA cell line and cloning rights on all animals sold.





We are excited to welcome you to our upcoming production sale, and sincerely thank you for taking the time to look through our offering. Whether you're a long-time supporter or browsing our catalog for the first time, we're truly grateful for your interest in our program.

This set of calves represents the result of years of careful breeding, selection, and hard work- with both the show ring and long-term functionality in mind. We invite you to come walk through the pens, ask questions, and get a firsthand look at the cattle we're proud to stand behind. We're always happy to visit and share our passion for this industry.

To our **past buyers**, we want to extend our deepest thanks. Your continued trust and success stories drive us to keep improving year after year. Watching our cattle go on and do great things in and out of the show ring is a source of pride we never take for granted.

To our **employees and crew**, thank you for your countless hours, attention to detail, and dedication that make everything we do possible. This sale wouldn't happen without your hard work behind the scenes every day.

We look forward to visiting with you soon- whether it's at the sale facility, on the phone, or ringside. Please don't hesitate to reach out with any questions. We appreciate your support and interest, and we're always here to help you find the right fit for your program.

*Bret Udell*



BRET, BECKY, MITCHELL, HANNAH, BRECKEN, & BAYLOR UDELL  
CHRIS, MADDY & CHARLIE BARTON



GREG & KIM VAN ZEE



# WELCOME TO “THE ADVANTAGE” 2025 EDITION

The word “Quality” is tied to so much that we do on a day-to-day basis. It’s a word that everyone uses and everyone wants to be a part of. “The standard of something as measured against other things of a similar kind; the degree of excellence of something” is the definition per Google. This word, this thing, when used to describe anything, has value, and that value in the livestock industry carries more weight than ever before and those operations with the goods are rewarded for that measurement through their annual price discovery experiences, in the evaluation ring, or in the fields of production. Quality in its purest and summit worthy form is priceless and desired by all.

The foundation of Udell Cattle Company as it is known today was initiated with the utmost quality in acquisitions. Bret and company exhibited those said acquisitions in dominating form throughout the junior careers for Mitchell and Maddy as we all know. The family operation employed those tanbark dominating females in the donor pen and have utilized the best sires known to the business to prove further the fiscal investment made worthy after the backdrops and banners. Quality is synonymous with the brand and the family name as they attract a large viewing audience annually to walk the pens and view **“The Advantage”** Female Sale offering.

Congratulations to the brand for winning the 2025 NJAS Grand Champion Owned Female with UDE Saras Dream 4010, exhibited by KayLee Langford. As many know, she is the daughter of another high-selling feature exhibited by Sara Sullivan, UDE Saras Dream 1086. Silveiras Saras Dream 2335 is one of many outstanding acquisitions made by the forward-thinking operation that consistently produces generations of winners year after year.

This year’s offering will include the very first set of daughters sired by the 2024 Embryos on Snow featured Live Lot, the \$280,000, half interest, UDE New Heights 62/87. He is the new Angus sire of choice for use in and outside the Angus circles to sire high caliber show stock that will raise the bar not only for structural and skeletal quality, but they will also come with extra substance and shape in comparison to those other sires used in the past. UDE New Heights 62/87 will be the new standard of quality industry wide, and he will have multiple full and maternal sisters out there doing the same thing for the operations that employ them as well. FCF Phyllis 532, his dam, is another generational producer with a featured donor presence in this 9th Annual Advantage Female Sale!

We know that many of you reading this introductory letter will make the trip to Sioux City at some point prior to October 18. If you have not taken the time to go view the cattle and operation, we strongly encourage you to do so as we are certain you will be impressed. This is not an operation to stand on the sidelines and judge, it’s an operation that you should take serious note of when it comes to quality and generational proof from the matriarchs that they have to utilize annually to build this offering. The set of females between the covers of this sale book is the absolute best of the best sorted down from a very significant number of embryo transfer calves from a dominating donor arsenal. Quality is first and foremost each and every day at Udell Cattle Company, it’s a lifestyle.

If you need any assistance with selection or additional information on the offering, please feel free to reach out to any member of the Innovation AgMarketing team, as we are happy to help in any way. We promise that the food and hospitality will be top-notch for those attending sale weekend, and we are confident you will be impressed by the stock as well. Until then, safe travels and enjoy the offering.

*Graham Blagg* · *Jim Anderson* · *Jered Shipman*



UDE PRINCESS 172L  
2025 FWSS GRAND CHAMPION PERCENTAGE SIMMENTAL HEIFER  
CONGRATULATIONS BRENNA BARTLOW!



# KDJ QUEEN RUTH 502

DAUGHTERS LOTS 1-6 • GRANDDAUGHTERS LOTS 7-17

KDJ Queen Ruth 502 continues to lead the pack as one of the most dominant producing Angus females at Udell Cattle Company. She consistently puts the good ones on the ground! KDJ Queen Ruth 502 was a dominant show heifer for Maddy in 2016. She was the American Royal Grand Champion Angus Heifer and NAILE Reserve Grand Champion Angus Heifer. In October of 2017, UDE Queen Ruth 109E, began the dynasty that KDJ Queen Ruth 502 would have on "The Advantage" Production Sale still to this day, when the SMA Watchout 482 daughter topped the Angus division at **\$50,000**. That heifer went on to be successfully campaigned by Shayne Myers of California to the title of Reserve Grand Champion Angus Heifer at the 2018 NJAS in Madison, Wisconsin!

KDJ Queen Ruth 502 then struck again in "The Advantage" Production Sale in October of 2020, with a KR Casino 6243 daughter that commanded **\$37,000**. UDE Queen Ruth 0204 went on to completely dominate the show circuit from coast to coast for the next year, her most notable wins included the 2021 American Royal ROV Grand Champion Angus Heifer, both the 2021 NAILE ROV and Junior Show Grand Champion Angus Heifer and the 2022 Cattleman's Congress ROV Reserve Champion Angus Heifer. She was admired by cattlemen and women from all segments of the business for her unique combination of form and feature. Proof of the interest in her genetic potential is summarized by the **\$43,000** price tag given to the right to flush 0204 that sold through the 2022 Embryos On Snow. Since then she has become a very potent breeding piece in production, generating both bulls and females of distinction.

The fall of 2022 revealed more exponential growth in the interest of the potency that comes from the KR Casino x Queen Ruth 502 combination, four full sisters were cataloged as lots 1-4 in the "The Advantage" Production Sale, they commanded **\$500,000, \$135,000, \$80,000, and \$18,500** to average **\$183,500**. Two other

daughters sired by SCC SCH 24 Karat 838 also sold in October for a total of 6 daughters of K D J Queen Ruth 502 to gross just under three-quarters of a million dollars in one evening! One of which was Sara Sullivan's Third Overall Owned Champion Female, UDE Queen Ruth 2003 at the 2023 National Junior Angus Show.

As we have for several years now, 502 daughters lead off the offering, in 2024 Lot 1 was a KR Casino 6243 x 502 and became the **\$67,000** purchase of the Wheeler family, and her full sister Lot 4 being the **\$40,000** purchase of Veale Ranches. The resume that 502 has assembled is unlike another in the nation, with a high sellers list that consists of daughters at **\$500,000, two at \$135,000, \$110,000, \$90,000, \$87,000, \$80,000, \$67,000, \$52,000, \$50,000, \$42,000, \$40,000, \$37,000, \$33,000, \$27,000, \$25,500, \$22,000, \$20,000, \$19,000, \$18,500, \$18,000, \$17,000, \$16,500, and \$13,000...** but this does not include the several other daughters that have been sold over the last 5 years from \$7,500 to \$12,500 and have gone on to be competitive show heifers turned proven producers. Upon that will find daughters of the Casino x Queen Ruth 502 mating as influential young donor dams that are headlining the business, including the Lashmett & Weis owned, UDE Queen Ruth 9088, the UDE Queen Ruth 0204 donor and the freshest source of excellence for Udell Cattle in UDE Queen Ruth 2001.

There is much more to come from the 502 empire! There is no questioning the domination that the Queen Ruth 502 influence has asserted both in the show ring and show heifer production circles, her legacy will live on through her daughters, as they continue the family tradition of being the premier Angus show heifer producing females in the business.



UDE QUEEN RUTH 0204  
2021 NAILE GRAND CHAMPION JUNIOR ANGUS HEIFER  
CONGRATULATIONS RANCE WHEELER!



UDE QUEEN RUTH 0204  
 FULL SISTER TO LOTS 4 & 5  
 MATERNAL SISTER TO LOTS 1-3 & 6



UDE QUEEN RUTH 2001  
 FULL SISTER TO LOTS 4 & 5  
 MATERNAL SISTER TO LOTS 1-3 & 6  
 DAM OF LOTS 7-15





# Lot I

## UDE QUEEN RUTH 5005

AAA 21336913 | DOB 1/21/25 | TATTOO 5005 | BREED ANGUS

BNWZ DIGNITY 8017

PVF INSIGHT 0129

UDE NEW HEIGHTS 62/87

X

KDJ QUEEN RUTH 502

FCF PHYLLIS 532

K D J QUEEN RUTH

- We have waited a long time to be able to debut this trio of females that stem from a mating that aligns the stars. True genetic consistency can be expected from the combination of UDE New Heights 62/87 and KDJ Queen Ruth 502. Year after year 502 delivers at the highest level. Her ability to produce cattle with true skeletal width and dimension, real world performance, and genuine shape is unmatched! Then add UDE New Heights 62/87 and in turn, FCF Phyllis 532 to the equation and the rest is history.

- The list of accomplishments and valuations of the maternal sisters to UDE Queen Ruth 5005 is staggering. The dominance of KDJ Queen Ruth 502 has spanned close to a decade, and it seems that this timeless promoter of quality doesn't let sire choice stand in the way of delivering the goods as she strikes in an automatic fashion.

- Phenotypically this UDE New Heights 62/87 daughter is one that you will be drawn to in a hurry! She is impressively loose structured, bold ribbed and deep in her underline. Yet she flips the script when it comes to describing the tightness and chiseled look about her head and neck design, we think that she reads with not only the potential to have a very successful show career but has breeding pieces that set the foundations for a lucrative production portfolio.

- Tie into one of the best from a cow family that has proven to perform on the biggest stages and yield the largest financial rewards.



UDE QUEEN RUTH 0204  
 2022 CATTLEMEN'S CONGRESS ROY RESERVE GRAND CHAMPION ANGUS HEIFER  
 FULL SISTER TO LOTS 4 & 5  
 MATERNAL SISTER TO LOTS 1-3 & 6



Lot

TWO

- Study the stoutness that this female offers from the ground up. She is sleek fronted, and smooth shouldered, yet transitions into a three-dimensional center body that further compliments her balance and quality from the side. She is going to be well received this winter just as readily as she will next summer and fall as a bred heifer. This is a big time show heifer prospect that is ready to battle in the heat of the competition.
- Females with the phenotype and pedigree of UDE Queen Ruth 5020 turn into very valuable pieces of property to own when their time in the show ring comes to an end, invest in the future of your breeding program with a 502 daughter that is sired by the future hall of famer, UDE New Heights 62/87. Trust us when we say, this female is much more than just a donor prospect, as she is the kind that will hang banners along the way.
- Pedigree, phenotype, future - this one has it all!

## UDE QUEEN RUTH 5020

AAA 21336914 | DOB 3/26/25 | TATTOO 5020 | BREED ANGUS

BNWZ DIGNITY 8017

PVF INSIGHT 0129

UDE NEW HEIGHTS 62/87

X

KDJ QUEEN RUTH 502

FCF PHYLLIS 532

K D J QUEEN RUTH



UDE QUEEN RUTH 0204  
2021 AMERICAN ROYAL ROY GRAND CHAMPION ANGUS HEIFER  
FULL SISTER TO LOTS 4 & 5  
MATERNAL SISTER TO LOTS 1-3 & 6

Lot

THREE



- You can trust that any level of investment is warranted with these daughters of the UDE New Heights 62/87 and KDJ Queen Ruth 502 combination. Many of the most productive and successful stories for the UDE prefix can be traced straight back to either side of this lineage.
- This young matron defines all the positives of refinement, femininity and beauty, all while being hinged on a perfect amount of balance and true function. We love the added maternal function that comes standard feature with these KDJ Queen Ruth 502 derived females, they are cattle that come dense and round bodied but remain crisp in their design and sharp in their angles and feature.

## UDE QUEEN RUTH 5029

AAA 21336915 | DOB 4/12/25 | TATTOO 5029 | BREED ANGUS

BNWZ DIGNITY 8017

PVF INSIGHT 0129

UDE NEW HEIGHTS 62/87

X

KDJ QUEEN RUTH 502

FCF PHYLLIS 532

K D J QUEEN RUTH



UDE QUEEN RUTH 0204  
2021 NAILE ROY GRAND CHAMPION ANGUS HEIFER  
FULL SISTER TO LOTS 4 & 5  
MATERNAL SISTER TO LOTS 1-3 & 6

# Lot

## FOUR

- We present two full sisters from most prolific and consistent mating in the history of Udell Cattle Company. The KR Casino 6243 x KDJ Queen Ruth 502 mating has been the go-to source of quality for some time now in Sioux City, being responsible for females at \$500,000, \$135,000, \$80,000, plus multiple more between \$15,000-\$50,000.
- The \$500,000 UDE Queen Ruth 2003 is best known as Sara Sullivan's 2023 NJAS Third Overall Owned Heifer. The \$135,000 UDE Queen Ruth 2001, was selected by KayLee Langford and campaigned to countless victories. You will notice her as the mother of Lots 7 through 15 in this offering! 2001 is set for an incredible breakout season in production. UDE Queen Ruth 2157 was the \$80,000 selection of Red River Farms and is the dam of Lots 16 & 17. And finally, is the Wheeler family's dominant champion, UDE Queen Ruth 0204 that was an unstoppable force every time she stepped in the ring.
- UDE Queen Ruth 5003 strikes us as the kind who can do it all, we love her incredible presence and arrogance as she struts through the pen, she carries herself with a proud look and demeanor.



### UDE QUEEN RUTH 5003

AAA 21336912 | DOB 1/15/25 | TATTOO 5003 | BREED ANGUS

CFCC BLACK JACK 001

PVF INSIGHT 0129

KR CASINO 6243



KDJ QUEEN RUTH 502

MALSONS SAVANNAH 27Y

K D J QUEEN RUTH

# Lot

## FIVE

- The younger and later maturing daughter of the KR Casino 6243 x KDJ Queen Ruth 502 flush is one that gives you a very optimistic feeling about what is to come down the road. She continues to develop with more power and stoutness every day, and motors with the ultimate level of flexibility. She is built rugged and correct at her base and is designed for the long haul.
- The genuine stoutness, skeletal quality, and capacity that set 502 apart during her time on the tan bark has been transmitted to her progeny!



### UDE QUEEN RUTH 5030

AAA 21336916 | DOB 4/13/25 | TATTOO 5030 | BREED ANGUS

CFCC BLACK JACK 001

PVF INSIGHT 0129

KR CASINO 6243



KDJ QUEEN RUTH 502

MALSONS SAVANNAH 27Y

K D J QUEEN RUTH



UDE QUEEN RUTH 2003  
2023 NJAS THIRD OVERALL OWNED HEIFER  
FULL SISTER TO LOTS 4 & 5  
MATERNAL SISTER TO LOTS 1-3 & 6



UDE QUEEN RUTH 2003  
2023 DOWN 4 THE CAUSE 3RD OVERALL HEIFER  
FULL SISTER TO LOTS 4 & 5  
MATERNAL SISTER TO LOTS 1-3 & 6



Lot 6

## UDE QUEEN RUTH 5001

AAA 21336911 | DOB 1/1/25 | TATTOO 5001 | BREED ANGUS

COLLISON ALPHA 028

PVF INSIGHT 0129

BLC/MLA OMEGA 2258

X

KDJ QUEEN RUTH 502

MLA PROVEN QUEEN 2058

K D J QUEEN RUTH

- UDE Queen Ruth 5001 is sired by the \$190,000 valued Embryos on Snow AI sire, BLC/MLA Omega 2258. The dam of BLC/MLA Omega 2258 is a Silveiras Style 9303 sired daughter of the iconic FCF Proven Queen 419, arguably one of the best Angus females shown in the last decade! His pedigree only adds more maternal power to the equation, helping to stack multiple champions and high revenue generators up into one potent pedigree!

- Opportunities like this don't come along every day, and just from a pedigree standpoint, this female should stir major excitement. Make note that her dam is one of the most accoladed, and high revenue generating Angus matrons the breed has ever seen, so there is more than just fluke chance involved in the breeding capabilities of the pedigree involved here.

- We love the ultimate level of symmetry and balance that this January born prospect was blessed with. She is smooth as glass in her transitions, flat in her blade and laid back in the angle of her knee. She is the kind that will find friends whenever she makes an appearance in the ring!



BLC/MLA OMEGA 2258  
\$95,000 SIRE OF LOT 6



UDE QUEEN RUTH 109E  
2018 NJAS RESERVE GRAND CHAMPION OWNED HEIFER  
MATERNAL SISTER TO LOTS 1-6



Lot 7

## UDE LGFD QUEEN RUTH 5002

AAA 21336592 | DOB 1/2/25 | TATTOO 5002 | BREED ANGUS

SCC TRADITION OF 24	KR CASINO 6243
SCC SCH 24 KARAT 838	<b>X</b> UDE QUEEN RUTH 2001
FCF PROVEN QUEEN 419	KDJ QUEEN RUTH 502

- UDE LGFD Queen Ruth 5002 is a very intriguing female that will draw a crowd because of her incredible phenotype and get the imagination running wild about her potential as a breeding piece going forward. Her pedigree combines several of the most impressive champions of the past decade in both KDJ Queen Ruth 502 and FCF Proven Queen 419 within the first 2 generations of her lineage.
- UDE Queen Ruth 2001 serves as the perfect foundation for the outlier kind that SCC SCH 24 Karat 838 generates, in our mind this is a perfect synergy of elite maternal function and "out there" type and kind. This female is high tying in her neck attachment, sleek shouldered, and offers extreme quality in terms of a very futuristic build.
- There has never been a better time than now to invest in cow families that consistently rise to the top.



UDE QUEEN RUTH 2001  
DAM OF LOTS 7-15

THE  
*Queen Ruth*

LEGACY  
CONTINUES



Lot

EIGHT

- Here we begin four full sisters from the UDE New Heights 62/87 sires flush on the newest donor for the UDE prefix, UDE Queen Ruth 2001. 2001 is the \$135,000 sale feature that was selected by KayLee Langford and campaigned to countless victories from the 2022 "The Advantage". She was the 2023 and 2024 FWSS Grand Champion Junior Angus Heifer and the 2023 WNAF ROV Grand Champion Angus Heifer. She too is a FULL SISTER to the \$500,000 UDE Queen Ruth 2003 and the Wheeler campaigned, UDE Queen Ruth 0204.

- The UDE Queen Ruth 2001 female always stood out from the crowd, as she was one of the burliest, powerful, donor cow looking show heifers that the Angus circles have ever seen. The anticipation of her breeding career started from early on, as she was the kind that just screamed generating potential.

- Combine the elite cow family and flawless phenotype of this female, and we think she has all the credentials to become a cornerstone breeding piece herself.

## UDE LGFD QUEEN RUTH 5012

AAA 21336594 | DOB 2/24/25 | TATTOO 5012 | BREED ANGUS

BNWZ DIGNITY 8017

KR CASINO 6243

UDE NEW HEIGHTS 62/87

X

UDE QUEEN RUTH 2001

FCF PHYLLIS 532

KDJ QUEEN RUTH 502



Lot

NINE

- Here we find a big centered, stout featured daughter of the UDE Queen Ruth 2001 donor dam. She is massive about the rear two thirds of her body cavity yet is so eloquently chiseled and angular about the front third.

- There may not be a hotter piece of property to own from both a show heifer and a donor cow perspective than a daughter of our up-and-coming UDE Queen Ruth 2001 donor. Take hold of the opportunity while you can, this is a lineage that will be talked about for a long time to come.

- The "Queen Ruth" cow family has quickly become one of the highest dollar generating cow families in our breeding program, these daughters and granddaughters are set to follow in her footsteps!

## UDE LGFD QUEEN RUTH 5016

AAA 21336595 | DOB 3/12/25 | TATTOO 5016 | BREED ANGUS

BNWZ DIGNITY 8017

KR CASINO 6243

UDE NEW HEIGHTS 62/87

X

UDE QUEEN RUTH 2001

FCF PHYLLIS 532

KDJ QUEEN RUTH 502



UDE QUEEN RUTH 2001  
2023 FWSS GRAND CHAMPION JUNIOR ANGUS HEIFER  
DAM OF LOTS 7-15



# Lot IO

## UDE LGFD QUEEN RUTH 5019

AAA 21336597 | DOB 3/25/25 | TATTOO 5019 | BREED ANGUS

BNWZ DIGNITY 8017

KR CASINO 6243

UDE NEW HEIGHTS 62/87



UDE QUEEN RUTH 2001

FCF PHYLLIS 532

KDJ QUEEN RUTH 502

- UDE LGFD Queen Ruth 5019 is exactly the kind that has made this cow family the “go to” for the most serious about operating at the forefront of the business. In terms of skeletal quality, powerful phenotype and eye appeal it doesn’t get much better than this. She ties her neck high at the top of her neatly laid in shoulder design, while transitioning seamlessly from end to end.

- Overall, she is impressive in her stature being extra bold in her ribcage development, low centered, high tying and flexible jointed. As the showing moves towards sorting cattle with perfect balance to the top, this female fits the bill and is right for the times.

- Her sire has become one of the most demanded in the show cattle business, as he has found nationwide approval from cattlemen that appreciate genuine quality.

- While it will not be hard to find this female in the sale pens because of the fact that she is an absolute phenotypic standout, you can rest assured that she too comes with an absolutely royal pedigree!

- One of the best **EVER** produced at Udell Cattle Company!



UDE QUEEN RUTH 2001  
2024 FWSS GRAND CHAMPION JUNIOR ANGUS HEIFER  
DAM OF LOTS 7-15



# Lot II

## UDE LGFD QUEEN RUTH 5032

AAA 21336600 | DOB 4/15/25 | TATTOO 5032 | BREED ANGUS

BNWZ DIGNITY 8017

KR CASINO 6243

UDE NEW HEIGHTS 62/87



UDE QUEEN RUTH 2001

FCF PHYLLIS 532

KDJ QUEEN RUTH 502

- A truly elegant, designed female that offers a look of quality and style from the side that is simply undeniable. We love the skeletal integrity she is designed upon and the impressive dimension, and shear power that this female looks to be maturing with.

- Having UDE Queen Ruth 2001, KDJ Queen Ruth 502, FCF Phyllis 532 and CCC Sara's Dream 5116 all within the three-generation pedigree of these ET flushmates gets us excited about their potential in production!

- You will hear this often, but we are very excited about the future of the program by having UDE New Heights 62/87 standing at the top of the breeding roster.



UDE QUEEN RUTH 2001  
2023 WNAF ROY GRAND CHAMPION ANGUS HEIFER  
DAM OF LOTS 7-15



# Lot I2

## UDE LGFD QUEEN RUTH 5004

AAA 21336593 | DOB 1/19/25 | TATTOO 5004 | BREED ANGUS

CONLEY NO LIMIT

KR CASINO 6243

CONLEY DS CLEAR CUT 0510



UDE QUEEN RUTH 2001

CONLEY SANDY 5104

KDJ QUEEN RUTH 502

- The sire of the next four UDE Queen Ruth 2001 daughters is the \$400,000 valued, 2021-2022 ROV Show Bull of the Year, Conley DS Clear Cut 0510. He stems from the \$1 million+ producing Conley Sandy 5104, who was the 2016-2017 ROV Show Heifer of the Year making him a maternal sibling to both the \$150,000 Conley Sandy 9743 and Conley Sandy 8510, the 2019 NWSS Reserve Grand Champion Junior Angus Heifer.

- We love the overwhelming mass and dimension that this powerful female offers through her center body and forerib. 5004 is a high-capacity January born show heifer prospect that offers the unique proportions and balance necessary to compete at the highest level!

- It's hard to deny the genuine power and substance that this female possesses. She is certainly the kind that offers a world of good to a breeding program once her time on the chips comes to an end.

- If your plan is to go out early and often, then pay serious attention to UDE LGFD Queen Ruth 5004 as this early maturing, extra powerful female is ready to start collecting banners shortly after sale day.



CONLEY DS CLEAR CUT 0510

2022-2023 ROV SHOW BULL OF THE YEAR  
\$400,000 VALUED SIRE OF LOTS 12-15



Lot 13

## UDE LGFD QUEEN RUTH 5018

AAA 21336596 | DOB 3/25/25 | TATTOO 5018 | BREED ANGUS

CONLEY NO LIMIT

KR CASINO 6243

CONLEY DS CLEAR CUT 0510

X

UDE QUEEN RUTH 2001

CONLEY SANDY 5104

KDJ QUEEN RUTH 502

- We are excited to showcase this big group of UDE Queen Ruth 2001 daughters! The genuine stoutness, skeletal quality, and capacity that set her apart during her time on the tan bark has been transmitted to her progeny! They are the right kind for the business, coming with extra shape, power and dimension, yet still have a high-quality look of balance and symmetry.

- UDE LGFD Queen Ruth 5018 is a stout featured and bold bodied female that delivers on the trademarked power cow promises that the "Queen Ruth" lineage has become synonymous with. With this in mind, she still remains so exquisite about her front third and lays in a neatly chiseled outline to her neck and chest.

- Incredible body mass and capacity with presence and eye appeal to burn.

- Tie to a cow family that consistently gets the job done... in and out of the ring!



# Lot FOURTEEN

- Finding your favorite member of the Conley DS Clear Cut 0510 and UDE Queen Ruth 2001 mating could sure stir up some conversation, as each of them sort towards the front of the offering. This younger prospect comes with all the pieces to make an incredible project for next summer and fall.
- From the ground up she is impeccable on her feet and legs, offering tremendous substance of foot and bone.
- We appreciate the genuine skeletal quality and balance that this female possesses. Another elite investment opportunity to acquire a piece of the next generation from the "Queen Ruth" dynasty!



UDE QUEEN RUTH 1001  
2022 FWSS GRAND CHAMPION JUNIOR ANGUS HEIFER  
FULL SISTER TO DAM OF LOTS 7-15

# 20 Lot FIFTEEN

- Keep in mind that we lot order these full sisters by age and not quality, because even though we round out the impressive Conley DS Clear Cut 0510 x UDE Queen Ruth 2001 flush with 5027, that should be by no means an indication of her quality.
- This April born show heifer prospect is so smooth from the side, offering a perfect design to her shoulder and tying high at the top of her blade. She is incredible in the shape and depth of her mid-rib and underline, offering the perfect progression of depth through her flank.
- A surefire bet if you're hunting a show heifer prospect that will compete at the highest level and then transition into a lucrative donor!



UDE QUEEN RUTH 9088  
2020 NWSS ROV DIVISION III CHAMPION ANGUS HEIFER  
FULL SISTER TO DAM OF LOTS 7-15



## UDE LGFD QUEEN RUTH 5025

AAA 21336598 | DOB 4/7/25 | TATTOO 5025 | BREED ANGUS

CONLEY NO LIMIT KR CASINO 6243  
CONLEY DS CLEAR CUT 0510 X UDE QUEEN RUTH 2001  
CONLEY SANDY 5104 KDJ QUEEN RUTH 502



## UDE LGFD QUEEN RUTH 5027

AAA 21336599 | DOB 4/10/25 | TATTOO 5027 | BREED ANGUS

CONLEY NO LIMIT KR CASINO 6243  
CONLEY DS CLEAR CUT 0510 X UDE QUEEN RUTH 2001  
CONLEY SANDY 5104 KDJ QUEEN RUTH 502



# Lot SIXTEEN

- We start the pair of UDE Queen Ruth 2157 daughters with this extra stout, heavy structured gem that looks to have a very promising future ahead of her, both in the ring and in the donor pen.
- She is a daughter of the \$100,000 ST Genetics sire, Conley A 1 that has gained steam from this first calf crop. He supplies the maternal backing of some of the most prevalent females and cow families in Express Angus Ranch history.
- Her dam, UDE Queen Ruth 2157, was the \$80,000 selection of Red River Farms, and will go down as one of the densest, heavy duty-built females we have ever raised. She screamed cow power from early on, and this year we are excited to add her to the donor roster for "The Advantage"!
- She is flawless at the surface with a perfect shape to her foot and has tremendous density of bone, all the while remaining ideal in her angles and joint work.

## UDE QUEEN RUTH 5008

AAA 21336908 | DOB 2/10/25 | TATTOO 5008 | BREED ANGUS

GATEWAY FOLLOW ME F163

KR CASINO 6243

CONLEY A 1

X

UDE QUEEN RUTH 2157

EXAR PRINCESS 6741

KDJ QUEEN RUTH 502



CONLEY A 1  
\$100,000 SIRE OF LOT 16

# Lot SEVENTEEN

- UDE Queen Ruth 5011 is an exciting way to debut the influence of the impressive, Wheeler Hunter Ted Lasso sire. His mating with UDE Queen Ruth 2157 has generated a prospect that is extremely attractive through her front third, clean chested, and one that transitions to a big stout pin set when viewed from behind.
- UDE Queen Ruth 2157 is one of the most unique KR Casino 6243 x KDJ Queen Ruth 502 daughters in existence, she was a competitive show heifer for the Mullion family, but as we always expected, her full potential is being realized in production.
- 5011 is a beautiful profiling February born show heifer prospect that is sound footed, great structured, and extremely balanced from the side. She has all the pieces to be a force on the tanbark.



## UDE QUEEN RUTH 5011

AAA 21336909 | DOB 2/22/25 | TATTOO 5011 | BREED ANGUS

BNWZ DIGNITY 8017

KR CASINO 6243

WHEELER HUNTER TED LASSO

X

UDE QUEEN RUTH 2157

HUNTERS BLACKBIRD 043 PBCC

KDJ QUEEN RUTH 502



WHEELER HUNTER TED LASSO  
SIRE OF LOT 17

UDE PHYLLIS 4011  
2025 IA BEEF EXPO RESERVE SUPREME CHAMPION BREEDING HEIFER  
CONGRATULATIONS KAITLYN BERGI



UDE *New Heights*  
\$ 2 8 0 , 0 0 0



# Lot EIGHTEEN

- It's hard to argue with the incredible resume that FCF Phyllis 532 has built in Sioux City, her incredible production career has been highlighted for approaching a decade now, and with every mating and every calf crop she only continues to solidify her dominance on the cutting edge of the business, and not just in the Angus breed.

- Just a few highlights of the 532 story include her being the dam of UDE New Heights 62/87, Josie Phillip's 2022 NJAS Grand Champion Owned Heifer, the 2021 Cattlemen's Congress Reserve Grand Champion Percentage Simmental Bull, the 2021 NAILE Grand Champion Percentage Simmental Bull, and the 2024 IA State Fair Reserve Supreme Champion 4-H Breeding Heifer.

- The limited collection of FCF Phyllis 532 daughters to sell this year certainly carry the torch for a cow family that has been so dominant with every mating thrown her way.

- We love the maternal look to this female's center body, the structural integrity, and the overall balance and symmetry that she possesses. Another top show heifer candidate that is loaded with cow power!



## UDE PHYLLIS 5013

AAA 21336918 | DOB 2/26/25 | TATTOO 5013 | BREED ANGUS

PVF INSIGHT 0129

SCC FIRST-N-GOAL GAF 114

BNWZ EXECUTIVE DECISION 2219



FCF PHYLLIS 532

CCC SARA'S DREAM 5116

SCC PHYLLIS 051

# Lot NINETEEN

- Here we present the only FULL SISTER to the \$280,000 sale feature from the 18th Annual Embryos on Snow, UDE New Heights 62/87, the \$300,000-second-high selling female in 2024 and the \$135,000 second high selling female from the 2023 "The Advantage" Production Sale. The BNWZ Dignity 8017 x FCF Phyllis 532 mating is as automatic as they come, don't question an investment here as there is no limit to the genetic value of this prospect.

- FCF Phyllis 532 has quickly become one of the highest dollar generating cow families in our breeding program. In last year's sale the Ferree-Fitzgerald firm selected the \$300,000 UDE Phyllis 4019 to lead their show string, she was the 5th Overall Female at the 2024 Hoosier Beef Congress and looks to be a force this fall as a bred.

- UDE Phyllis 5033 moves the needle in terms of look, style, and presence! She is extreme in her neck attachment and looks to be maturing with very impressive body depth, shape, and overall power. Be sure to mark this April prospect as one to investigate when you make the trip to Sioux City.



## UDE PHYLLIS 5033

AAA 21336921 | DOB 4/19/25 | TATTOO 5033 | BREED ANGUS

PVF INSIGHT 0129

SCC FIRST-N-GOAL GAF 114

BNWZ DIGNITY 8017



FCF PHYLLIS 532

CCC SARA'S DREAM 5116

SCC PHYLLIS 051



UDE PHYLLIS 4019  
2024 HOOSIER BEEF CONGRESS 5TH OVERALL BREEDING HEIFER  
\$300,000 FULL SISTER IN BLOOD TO LOT 18 & FULL SISTER TO LOT 19



# Lot TWENTY

- These next two daughters of 532 stem from a new mating. Their sire, Conley A 1, is the \$100,000 son of EXAR Princess 6741, a daughter of the \$2.8 million producing donor, EXAR Princess 5391, and a matriarch of the legendary cow family. 5391 is also recognized as the dam of EXAR Princess 6680, affectionally known as "Pebbles", the dominant champion that Carter Ward campaigned as he rounded out his junior showing career.
- This stunning female encapsulates what high quality stock look like, being incredibly up headed and captivating, so loose and robust in her middle third, and so wide and dense about her muscle pattern. We love that you can appreciate both power and poise in one single package.
- A royal pedigree that aligns several multimillion dollar generating matriarchs that stand at the forefront of the Angus breed!

## UDE PHYLLIS 5024

AAA 21336919 | DOB 4/5/25 | TATTOO 5024 | BREED ANGUS

GATEWAY FOLLOW ME F163

SCC FIRST-N-GOAL GAF 114

CONLEY A 1

X

FCF PHYLLIS 532

EXAR PRINCESS 6741

SCC PHYLLIS 051

B C R PHYLLIS 092J  
2022 NJAS GRAND CHAMPION OWNED HEIFER  
MATERNAL SISTER TO LOTS 18-21



# Lot TWENTY-ONE

- This mating of the ST Genetics' sire, Conley A 1 on FCF Phyllis 532 has delivered the goods in our opinion. We love the genuine quality and structural framework that these females are built with. From the ground up they come faultless about their fundamentals and appear to be cattle that are only going to mature with more quality.
- Peering into the future of this elite female sure has us excited. We believe the upside potential here is significant, as she is perfect in her lines, so elevated and progressive in her look and motors with incredible comfort and flexibility. The foundations are set for a very exciting future with UDE Phyllis 5026.
- Elite, proven, time-tested, and productive matrons line her pedigree from top to bottom. The only thing that could trump her potential in the show ring is what she has to offer once she enters production.

## UDE PHYLLIS 5026

AAA 21336920 | DOB 4/9/25 | TATTOO 5026 | BREED ANGUS

GATEWAY FOLLOW ME F163

SCC FIRST-N-GOAL GAF 114

CONLEY A 1

X

FCF PHYLLIS 532

EXAR PRINCESS 6741

SCC PHYLLIS 051

B C R PHYLLIS 092J  
2023 FWSS ROY GRAND CHAMPION ANGUS HEIFER  
MATERNAL SISTER TO LOTS 18-21





# Lot 22

## UDE PHYLLIS 5023

AAA 21336907 | DOB 4/4/25 | TATTOO 5023 | BREED ANGUS

PVF INSIGHT 0129

SILVEIRAS STYLE 9303

BNWZ DIGNITY 8017



UDE PHYLLIS 9129

CCC SARA'S DREAM 5116

FCF PHYLLIS 532

- UDE Phyllis 5023 is the lone daughter of the prolific UDE Phyllis 9129 in this year's offering. UDE Phyllis 9129 was the \$115,000 selection of Campbell and Paulsen in 2019 and was successfully campaigned by Kinnick Paulsen to countless victories that include being named a Division Champion at the 2020 FWSS, Supreme Champion Heifer at the Heart of Iowa Blowout, and Supreme Champion Heifer at the Sneak-A-Peak Preview. 9129 is backed by the everlasting influence of the iconic FCF Phyllis 532 donor dam.
- UDE Phyllis 5023 is a FULL SISTER to UDE Phyllis 3024, the 2024 FWSS ROV Division II Reserve Champion for Red River Farms that sold for \$73,000.
- A Maine Angus maternal sister by BBR Memphis Mafia 3F sold last year for \$13,000, and in 2023, maternal sisters by KR Casino 6243 sold for \$14,000 and \$13,000.
- This younger female is loaded with future, being equipped with extreme quality, balance, and eye appeal!



UDE PHYLLIS 9129  
2020 FWSS ROV DIVISION CHAMPION ANGUS HEIFER  
DAM OF LOT 22



UDE PHYLLIS 9129  
2019 SNEAK-A-PEAK PREVIEW SHOW GRAND CHAMPION BREEDING HEIFER  
DAM OF LOT 22



UDE PHYLLIS 3024  
2024 FWSS ROV RESERVE DIVISION CHAMPION ANGUS HEIFER  
MATERNAL SISTER TO LOT 22

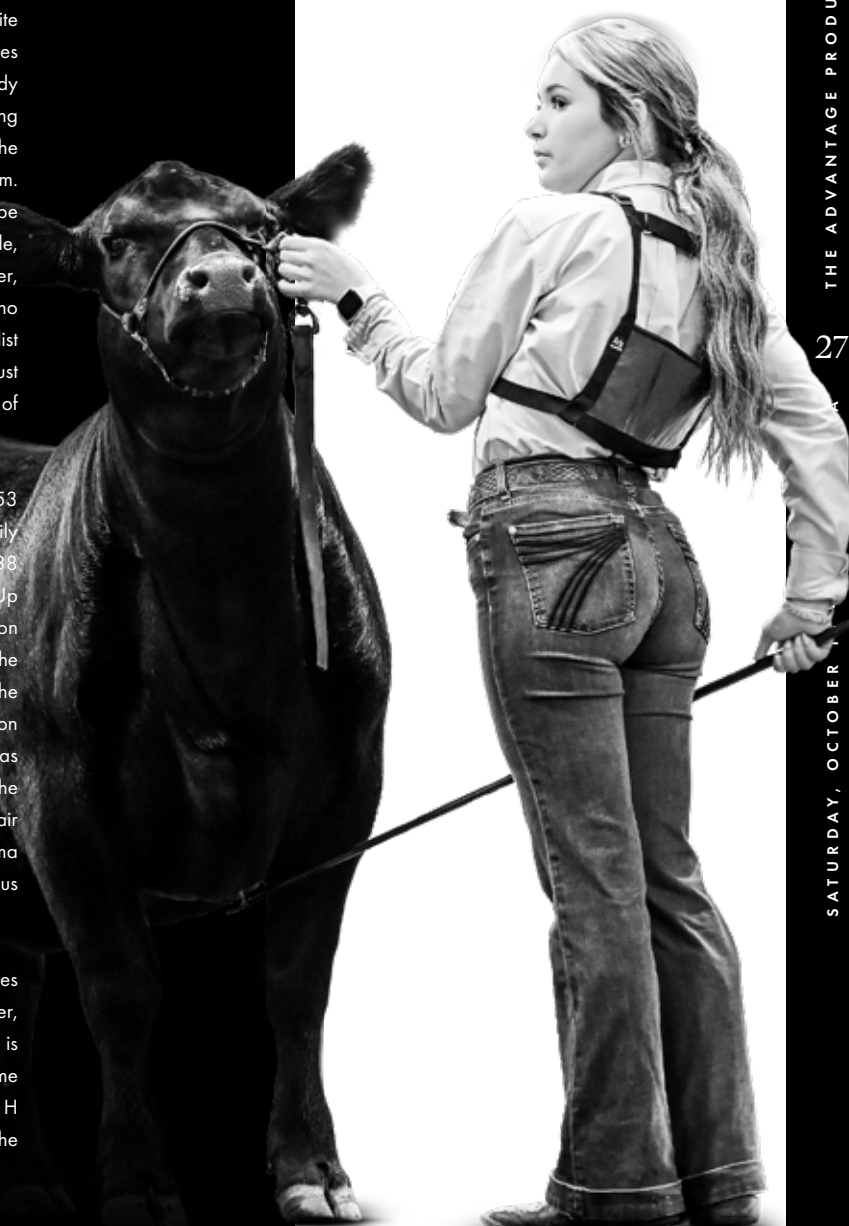
# LAZY H BAR Forever Lady 7153

## DAUGHTERS LOTS 23-24

Unfortunately we unexpectedly lost Lazy H Bar Forever Lady 7153 a year ago, just as she was headed on a war path towards being the next generation of elite caliber, mass revenue generating genetic masterpieces here at Udell Cattle Company. Lazy H Bar Forever Lady 7153 came from a long line of prolific females tracing to the legendary Lazy H Bar Forever Lady 5001, the absolute cornerstone of Barry Hageman's program. 2022 represented the initial set of embryo calves to be marketed from 7153 in "The Advantage" Production Sale, they averaged more than **\$15,000** per head! However, 2023 saw her potential realized as her KR Casino 6243 progeny featured at the top of the high sellers list at **\$190,000** and **\$97,000** for a total average of just shy of **\$143,500** each! Then in 2024, another trio of daughters averaged **\$16,233** per head.

The leading lady from the freshman class of 7153 daughters was purchased by the Lemenager family of Illinois for **\$37,500**. The SCC SCH 24 Karat 838 daughter was debuted at the 2022 Winter Warm-Up where she was selected as the Reserve Grand Champion Heifer in Ring B and the 4th Overall Heifer in Ring A. The KR Casino 6243 mating on 7153 was what yielded the **\$190,000** and **\$97,000** heifers from the 2023 edition of "The Advantage". The six-digit valued sister was KayLee Langford's, Third Overall Champion Female at the 2024 National Junior Angus Show. The latter of the pair of sisters was purchased by Ethan Moore of Oklahoma and will headline their emerging and progressive Angus donor pen.

7153 was certainly one of the most impressive females on the farm in Sioux City, Iowa. Unbelievable power, shape, and stoutness with a look from the side that is tough to mimic! Udell Cattle Company is home to some of the industry's most influential matriarchs. Lazy H Bar Forever Lady 7153 certainly cemented her place in the history of the program with the chances she was given.





# Lot 23

## UDE FOREVER LADY 5021

AAA 21336922 | DOB 4/2/25 | TATTOO 5021 | BREED ANGUS

CFCC BLACK JACK 001

EXAR LUTTON 1831

KR CASINO 6243



LAZY H BAR FOREVER LADY 7153

MALSONS SAVANNAH 27Y

LAZY H BAR FOREVER LADY 326

- This year just two daughters of the Lazy H Bar Forever Lady 7153 cow family are represented, but as followers of the program have come to expect, they both stand up to the expectations of high-quality build and picture-perfect profile that this cow family has become synonymous for.
- The KR Casino 6243 sired UDE Forever Lady 5021 comes with impressive amounts of body shape, a dense and burly center portion, and a rugged set of feet and legs that are built with comfort and longevity in mind.
- She is a FULL SISTER to UDE Forever Lady 3037, the \$190,000 sale feature from the 2023 sale that was the 2024 NJAS Third Overall Owned Heifer for the Langford family.
- We love the balance and correctness of 5021, as she looks to fit the mold of a high-quality show heifer prospect that will become an incredible donor cow prospect to generate the next high sellers and banner winners.



UDE FOREVER LADY 3037  
 2024 NJAS THIRD OVERALL OWNED HEIFER  
 FULL SISTER TO LOT 23 & MATERNAL SISTER TO LOT 24



UDE FOREVER LADY 4025  
 \$36,000 FULL SISTER TO LOT 23 & MATERNAL SISTER TO LOT 24



Lot 24

## VANZEE FOREVER LADY 5017

AAA 21335195 | DOB 3/22/25 | TATTOO 5017 | BREED ANGUS

CFCC BLACK JACK 001

EXAR LUTTON 1831

UDE NEW HEIGHTS 62/87

X

LAZY H BAR FOREVER LADY 7153

MALSONS SAVANNAH 27Y

LAZY H BAR FOREVER LADY 326

- If you opt for the kind that is high tying, with incredible presence and wild proportions then VANZEE Forever Lady 5017 is going to be your speed. The UDE New Heights 62/87 daughter is one that has no issues catching a gaze, as she is just naturally gifted with an eye appealing look and outline.
- She offers the unique ability to balance with so much quality and femininity from the side yet possesses tremendous skeletal width and genuine power.
- Maternal sisters to these Lazy H Bar Forever Lady 7153 daughters have been sought out by the most distinguished show families, as they offer the perfect combination of style and pizzazz with correctness and balance. For example, UDE Forever Lady 3037 that was KayLee Langford's, Third Overall Champion Female at the 2024 National Junior Angus Show and the Lemenager family's, UDE Forever Lady 2021 that was a dominate champion every time she walked into the ring.
- A true sale feature that offers unlimited upside. We lost 7153 a year ago, take advantage of one of the last chances you will have to acquire a direct daughter!



UDE FOREVER LADY 20190  
2023 OZARK EMPIRE RESERVE SUPREME CHAMPION BREEDING HEIFER  
MATERNAL SISTER TO LOTS 23 & 24



UDE FOREVER LADY 2021  
2022 IL WINTER WARM-UP RESERVE SUPREME CHAMPION RING A & 4TH OVERALL RING B  
MATERNAL SISTER TO LOTS 23 & 24

UDE SARAS DREAM 1086

\$600,000 DAM OF LOTS 25-28





*ude*  
SARAS  
DREAM  
*1086*

DAUGHTERS LOTS 25 - 28

We could not be more excited than to introduce the influences of one of the most anticipated Angus females in the history of the business, the record shattering **\$600,000**, UDE Saras Dream 1086 that was campaigned by Sara Sullivan. UDE Saras Dream 1086 was described by some of the most astute cattlemen, breeders and show families in the business as “the best” heifer calf of any breed they had ever laid eyes on. Profound terms such as “pristine,” “incredible” and “flawless” were used to depict the first impression that UDE Saras Dream 1086 portrayed. Her elite combinations of power, poise, and perfect confirmation echoed strongly in her trio of daughters that sold in “The Advantage” Production Sale in October of 2024.

Yet one could have never doubted her potential as a producer when you are reminded of her lineage, as she stems from a pedigree that is lined with the best the business has seen, being a daughter of the legendary Silveiras Saras Dream 2335. Silveiras Saras Dream 2335 was the 2013 American Royal ROV Champion Angus Heifer and is a full sister to the great Silveiras Saras Dream 1339. 1339 is most notably recognized as the dam of Colburn Primo 5153 and his band of dominantly competitive sisters which includes the Nowatzke’s American Royal Supreme Champion. Colburn Saras Dream 5116 was also the 2016 NJAS Grand Champion Owned Heifer, 2016 NAILE Grand Champion Angus Heifer and 2017 NWSS Grand Champion Angus Heifer among many other victories. Her most notable progeny would be BNWZ Dignity 8017, who has cemented his name among the leaders of the show heifer producing business.

The guess work has been removed about the dominance that this cow family is set to have on the business, just as the branches of the family tree have had to this point. A year ago her first daughters sold for **\$400,000**, **\$44,000**, and **\$37,000!** UDE Saras Dream 4010, was the high seller, and is now the reigning, 2025 NJAS Grand Champion Owned Female. She was a dominant champion, that looks to be a force as we head into the fall and winter show season. Beyond this, another full sister by BNWZ Dignity 8017 is the impressive UDE Saras Dream 4001 that on her debut on the tanbark led her to the backdrop at the 2024 Badger Brawl where she was selected as the Supreme Champion Heifer in Ring A and Reserve Supreme Champion Heifer in Ring B for Sloane Curtin.

Be sure to give these daughters of UDE Saras Dream 1086 some serious consideration, with the confidence that they have the supporting credentials of the most illustrious in the business.



# Lot 25

## UDE SARAS DREAM 5014

AAA 21336904 | DOB 3/4/25 | TATTOO 5014 | BREED ANGUS

STAG GOOD TIMES 201 ET	EXAR BLUE CHIP 1877B
STAG FORTUNATE SON 233	<b>X</b> UDE SARAS DREAM 1086
NORDS LUCY 8022	SILVEIRAS SARAS DREAM 2335

- 2024 saw the first daughters of the \$600,000 UDE Saras Dream 1086 to be marketed by Udell Cattle Company, and what a debut it was, with three daughters that averaged \$150,330 and a high seller at \$400,000. This high seller, UDE Saras Dream 4010, went on the be KayLee Langford's 2025 NJAS Grand Champion Owned Female this past summer. Needless to say, there is not a hotter piece of property than these daughters of 1086 in the business!
- This year's daughters of UDE Saras Dream 1086 are led by an incredible daughter of STAG Fortunate Son 233. 233 is a son of Nords Lucy 8022, the 2019 American Royal Supreme Champion Female, 2019 NJAS Reserve Grand Champion Owned Female and the Reserve Angus Female in both the 2020 NWSS Open and Junior Angus Shows.
- The power of pedigree goes well beyond the first generation too, as the maternal granddam of the 1086 daughters, Silveiras Saras Dream 2335, was the 2013 American Royal ROV Grand Champion Angus Heifer. She is a FULL SISTER to Silveiras Saras Dream 1339, the dam of Colburn Primo 5153 and CCC Sara's Dream 5116.
- You would struggle to draw an outline that is more ideal than that of UDE Saras Dream 5014, she ties all her pieces together so effortlessly and for these reasons we think the potential for this one to compete at the highest level in the showring is immense. When she is parked it's impressive, but when she gets on the move is when she sets herself apart.
- This special creature reminds us a lot of her sister we sold last year that won Junior Nationals, we know those are big shoes to fill, but this one has the quality to follow in family tradition.
- Study this female hard on sale day, she's the kind that it takes to win a big banner!



UDE SARAS DREAM 1086  
\$600,000 DAM OF LOTS 25-28



UDE SARAS DREAM 4010  
2025 NJAS GRAND CHAMPION OWNED HEIFER  
\$400,000 MATERNAL SISTER TO LOTS 25-28



UDE SARAS DREAM 4010  
2025 KS BEEF EXPO 3RD OVERALL RING A & RING B  
\$400,000 MATERNAL SISTER TO LOTS 25-28



## UDE SARAS DREAM 5022

AAA 21336905 | DOB 4/3/25 | TATTOO 5022 | BREED ANGUS

BNWZ DIGNITY 8017

EXAR BLUE CHIP 1877B

UDE NEW HEIGHTS 62/87

X

UDE SARAS DREAM 1086

FCF PHYLLIS 532

SILVEIRAS SARAS DREAM 2335

Lot TWENTY-SIX



UDE SARAS DREAM 4001  
2024 BADGER BRAWL SUPREME CHAMPION RING A &  
RESERVE SUPREME CHAMPION RING B  
MATERNAL SISTER TO LOTS 25-28

- The pair of UDE New Heights 62/87 flush sisters from the \$600,000 UDE Saras Dream 1086 set the tone for an exciting future for this program. Their pedigree brings together two of the young guns in the program and has delivered the highest quality of goods with show heifer prospects that will be on the top of many lists.
- The combination of her stout features, dense center third and intriguing presence make UDE Saras Dream 5022 one that we have high hopes for. She's the type that's bound to turn heads as she sets her big, soft paws down on the way to she showing.



## UDE SARAS DREAM 5035

AAA 21336906 | DOB 5/1/25 | TATTOO 5035 | BREED ANGUS

BNWZ DIGNITY 8017

EXAR BLUE CHIP 1877B

UDE NEW HEIGHTS 62/87

X

UDE SARAS DREAM 1086

FCF PHYLLIS 532

SILVEIRAS SARAS DREAM 2335

Lot TWENTY-SEVEN



UDE SARAS DREAM 4017  
2025 NWSS ROY RESERVE DIVISION 1 CHAMPION ANGUS HEIFER  
\$37,500 MATERNAL SISTER TO LOTS 25-28

- UDE Saras Dream 5035 is one tricked out show pony that comes with all the extra pieces that help her to stand out from the crowd. She is blessed with quality all over her phenotype, beginning with her loose and flexible running gear, an extra high quality hair coat, intriguing head and ear set and overall captivating proportions.
- Those that want to stand out from the get-go need to look in here, as UDE Saras Dream 5035 is built well outside the norm of what you would expect from a purebred Angus female.
- Maternally there is no questioning as to whether 5035 has the genetic potential to continue along her path of outlier kind, as her dam, the \$600,000 UDE Saras Dream 1086, will go down as a pivotal matron in both the Udell program and the breed in general.

# Lot TWENTY-EIGHT

- Rounding out the daughters of UDE Saras Dream 1086 is the one sired by BNWZ Executive Decision 2219. 2219 amassed an incredible resume of wins that include being the Supreme Champion Bull at 2023 NAILE, Grand Champion Angus Bull at the 2024 National Western Stock Show, and the Grand Champion Angus Bull at the 2024 Fort Worth Stock Show. He is a full brother to both BNWZ Dignity 8017 and BNWZ Paisley 2143.
- UDE Saras Dream 5009 reads with extra body volume, structural integrity, poise and balance! When this one is parked, she catches your eye, but as she sets in motion, she gets your heart racing. High quality livestock here, and with the power of the cow family that backs her, we know her time in production will be profitable.
- A big time show heifer/donor prospect!



## UDE SARAS DREAM 5009

AAA 21336903 | DOB 2/18/25 | TATTOO 5009 | BREED ANGUS

PVF INSIGHT 0129

EXAR BLUE CHIP 1877B

BNWZ EXECUTIVE DECISION 2219



UDE SARAS DREAM 1086

CCC SARA'S DREAM 5116

SILVEIRAS SARAS DREAM 2335



BNWZ EXECUTIVE DECISION 2219  
2023-2024 ROY SHOW BULL OF THE YEAR  
SIRE OF LOT 28 & FULL BROTHER TO DAM OF LOT 29

# Lot TWENTY-NINE

- Some very influential females line the pedigree of this impressive specimen. Her sire ROSE Replay 3321 is a son of the Wheeler family's, UDE Queen Ruth 0204 female that would be one of the most dominant champions in the Angus ring of the past few years, and then maternally you will find a FULL SISTER to BNWZ Dignity 8017. Therefore, the presence of the multimillion dollar producing, CCC Sara's Dream 5116 can be found here too.
- A beautiful profiling female that is bold bodied, dense made, stout featured and offers a maternal look of quality from the side.
- We think she is the kind that will generate long term, offering a premium blend of maternal strength, muscle shape, and added density!



## UDE SARAS DREAM 5015

AAA 21336917 | DOB 3/10/25 | TATTOO 5015 | BREED ANGUS

ROSE MC ENCORE 0463

PVF INSIGHT 0129

ROSE REPLAY 3321



CLAC SARA'S DREAM 52K

UDE QUEEN RUTH 0204

CCC SARA'S DREAM 5116



CCC SARA'S DREAM 5116  
2017 NWSS ROY GRAND CHAMPION ANGUS HEIFER  
MATERNAL GRANDDAM OF LOT 29



Lot 30

## UDE GEORGINA 5010

AAA 21336902 | DOB 2/20/25 | TATTOO 5010 | BREED ANGUS

GATEWAY FOLLOW ME F163

COLBURN PRIMO 5153

CONLEY LEAD THE WAY 0738



CONLEY DT GEORGINA 1076

EXAR PRINCESS 1637

CHAMPION HILL GEORGINA 8577

• The opportunity to purchase a daughter out of Conley DT Georgina 1076, the impressive 2023 National Junior Angus Show Grand Champion Owned Heifer and 2023 Cattlemen's Congress ROV Reserve Grand Champion Angus Heifer that was campaigned by Ty Collum is certainly not one you will find on every street corner. Unfortunately, she was met with an early demise, and only a very limited number of genetic opportunities were created out of this impressive matron. One of which though was the \$40,000 IVF cycle that Red River Farms purchased out of the 2024 Embryos on Snow.

- We love the elite feature that 5010 combines in terms of her extra stout bone work, awesome hair quality, high tying neck attachment, and uniquely stout hip design.
- This very unique female combines the intangible traits necessary to produce elite show heifer prospects that command serious premiums!
- We can promise that this is an opportunity that cannot be mimicked, and that beyond being a show heifer prospect this female offers a pedigree and quality that promotes her towards being a breeding piece that needs to be considered very seriously.



CONLEY DT GEORGINA 1076  
2023 NJAS GRAND CHAMPION OWNED HEIFER  
DAM OF LOT 30



CONLEY DT GEORGINA 1076  
2023 CATTLEMEN'S CONGRESS ROV RESERVE GRAND CHAMPION ANGUS HEIFER  
DAM OF LOT 30



CONLEY LEAD THE WAY 0738  
\$920,000 SIRE OF LOT 30

# Lot THIRTY-ONE

- UDE Ellie 5006 is a direct daughter of SLL Ellie 2201, one of the foundation females that put the UDE prefix on the map. Over the years, maternal sisters to 5006 have highlighted the offering, high sellers list, and backdrop. The high sellers list includes price tags at \$150,000, \$100,000, \$39,000, \$32,000, \$25,000, \$20,000, \$17,000, and \$13,000.
- UDE Ellie 5006 comes from a new mating on 2201 and looks to be the kind that is going to make an incredible matron once she hits the production stage of her career. She is long and eloquent in her build yet still wows you with the density and volume of body, being deep in her underline and round in her upper ribcage.
- She ties together all her powerful pieces with a very balanced and complete profile.



UDE ELLIE 9230  
2020 NAILE GRAND CHAMPION JUNIOR ANGUS HEIFER  
DAM OF LOT 32 & MATERNAL SISTER TO LOT 31



## UDE ELLIE 5006

AAA 21336910 | DOB 2/3/25 | TATTOO 5006 | BREED ANGUS

PVF INSIGHT 0129      PLAINVIEW LUTTON E102  
 PVF BLACKLIST 7077      **X** SLL ELLIE 2201  
 PVF BLACKBIRD 3070      O G L ELLIE 634-446

# 36 Lot THIRTY-TWO

- UDE Ellie 5031 is one that just naturally catches your eye because of her impeding presence and neat outline. She blends the boundaries of elegance and stoutness, delivering a dynamic package that will be a stellar addition to not just a string of show heifers, but a breeding arsenal as well.
- She is a direct daughter of UDE Ellie 9230, the \$100,000 selection of Sara Sullivan's that was a 2020 NWSS Division Champion, the 2020 NJAS Grand Champion Owned Female and the 2020 NAILE Grand Champion Junior Angus Female. She was a true outlier for stoutness, look, and sheer presence, truly a unique individual. In production she has become a pivotal breeding piece for Sullivan, particularly clicking with the KR Casino 6243 mating.
- FULL SISTERS to UDE Ellie 5031 include Josie Phillip's \$92,000 SULL Ellie 3655L that was a very competitive member of her string for the 2023-2024 season. Her championships included being the Supreme Champion and Grand Champion Female at the 2024 All-American Angus Breeders' Futurity Roll of Victory Show. Josie also purchased a maternal sister by Colburn Primo 5153 that was Supreme Champion Female at the 2025 Kentucky Beef Expo.



UDE ELLIE 9230  
2020 NJAS GRAND CHAMPION OWNED HEIFER  
DAM OF LOT 32 & MATERNAL SISTER TO LOT 31



## UDE ELLIE 5031

AAA 21336925 | DOB 4/14/25 | TATTOO 5031 | BREED ANGUS

CFCC BLACK JACK 001      EXAR BLUE CHIP 1877B  
 KR CASINO 6243      **X** UDE ELLIE 9230-I  
 MALSONS SAVANNAH 27Y      SLL ELLIE 2201



# Lot THIRTY-THREE

- The dam of Lot 33, Udell Ellie 9197, is a FULL SISTER to Sara Sullivan's Udell Ellie 9230 that was the 2020 NJAS Grand Champion Owned Heifer.
- 9197 was competitively campaigned by KayLee Langford during the 2020-2021 show season. She was the 2019 KS Beef Expo Reserve Supreme Champion Junior Breeding Heifer, 2020 KY Beef Expo Supreme Champion Junior Breeding Heifer, and a 2020 NWSS Division Champion.
- A FULL SISTER to 5007, UDE Ellie 3013, sold for \$23,000 to Claire Nibe of Melrose, Iowa in the 2023 sale. She was the 2024 All-Iowa Show Down Reserve Supreme Champion Breeding Heifer.
- UDE Ellie 5007 is laid in so smoothly at the point of her shoulder and then transitions into an overwhelming forerib and center body. She comes built upon a rugged set of feet and legs and will only mature with more dimension and power.

## UDE ELLIE 5007

AAA 21336924 | DOB 2/4/25 | TATTOO 5007 | BREED ANGUS

PVF INSIGHT 0129

EXAR BLUE CHIP 1877B

BNWZ DIGNITY 8017



UDE ELLIE 9197

CCC SARA'S DREAM 5116

SLL ELLIE 2201

UDE ELLIE 9197  
2019 KS BEEF EXPO  
RESERVE SUPREME CHAMPION RING A &  
5TH OVERALL RING B  
DAM OF LOT 33



# Lot THIRTY-FOUR

- A direct daughter of Mercedes Ferree's record breaking, \$300,000 UDE Blackbird 0153 from the 2020 "The Advantage" Production Sale. 0153 was a SCC SCH 24 Karat 838 daughter of Hoffman H/G Blackbird 620 that was ahead of the curve when it comes to uniqueness of feature and genuine power!
- This daughter of BNWZ Dignity 8017 is super robust and burly in her design, being wide ended, big pinned and still smooth in her transitions. She is flawless at the surface with a perfect shape to her foot with tremendous density of bone, all the while remaining ideal in her angles and joint work.
- She offers a traditional Angus female look about her head and neck yet comes with untraditional amounts of density and shape.

## UDE BLACKBIRD 5028

AAA 21336900 | DOB 4/11/25 | TATTOO 5028 | BREED ANGUS

PVF INSIGHT 0129

SCC SCH 24 KARAT 838

BNWZ DIGNITY 8017



UDE BLACKBIRD 0153

CCC SARA'S DREAM 5116

HOFFMAN H/G BLACKBIRD 620

UDE BLACKBIRD 0153  
2020 HOOSIER BEEF CONGRESS  
SUPREME CHAMPION HEIFER  
\$300,000 DAM OF LOT 34



# KDP MISS HOYA HAYLEIGH

KDP Miss Hoya Hayleigh is the triple crown winning National Champion Simmental female that has gone on to closely mimic these same accolades with her generating capabilities. There is no question that Miss Hoya Hayleigh is unique in her type and kind, as she has matured into a truly special Purebred Simmental breeding piece. Hoya Hayleigh topped the 2019 Paulsen Cattle Divas & Donors Elite Female sale commanding an **\$86,000** hammer price. She was admired by the most critical...and rightfully so. Her first time at the end of the leather lead was at the 2019 Kansas Beef Expo, where she was selected Grand Champion Purebred Simmental and Reserve Supreme Champion Overall. Hoya Hayleigh returned to the backdrop in a dominant fashion at the 2020 American Royal where she was selected as the Grand Champion Open Purebred Simmental, she continued her winning ways on the green chips as she was slapped Grand Champion Purebred Simmental at the North American and completed the triple crown with her win at the Inaugural Cattleman's Congress in Oklahoma City.

2022 saw the initial offering of the KDP Hoya Hayleigh influence, a pair of SO Remedy 7F sisters topped the Simmental division of the 2022 "The Advantage" Production Sale at **\$75,000** and **\$35,000!** Our partners on 'Hayleigh' at Black Gold Simmentals merchandised their first litter of 'Hayleigh' daughters the same fall with astonishing success! The HPF Quantum Leap Z952 daughters stole the show at **\$73,000 & \$35,000**, one of which, Black Gold Ms Hayleigh 153K went on to be selected as the 2023 Canadian Western Agribition First Lady Classic Supreme Champion Heifer. Additionally a trio of EC Rebel 156F daughters commanded **\$30,000, \$29,000 & \$16,000**. In 2023, 6 daughters of KDP Miss Hoya Hayleigh averaged an impressive **\$24,500** per head in Sioux City! 2024 saw the high selling Simmental female be a daughter of the SO Remedy 7F x KDP Hoya Hayleigh mating at **\$28,000** to Emma Chamberlin.

The SO Remedy 7F mating has been a dominate combination with 'Hayleigh', with price tags including **\$75,000, \$60,000, \$35,000, \$28,000** and **\$17,000!** UDE Hayleigh 5K is a member of this cohort, and was the dominant force campaigned by the Edge family through 2023 and into 2024. She was selected as the 2023 FWSS Grand Champion Purebred Simmental Heifer, 2023 AJSA National Classic 5th Overall Purebred Simmental Heifer, 2023 IA State Fair Grand Champion Purebred Simmental Heifer, 2023 American Royal Grand Champion Purebred Simmental Heifer, 2023 NAILE Grand Champion Purebred Simmental Heifer, 2024 NWSS Reserve Grand Champion Simmental Female and was crowned the 2023-24 PTP Purebred Simmental Show Heifer of the Year. Her exciting first litter of daughters sell as Lots 43-46.

Just as her intriguing build and feature suggested, the impact of Hayleigh is proving to be monumental in both the Black Gold Simmentals and Udell Cattle Company programs. Her extreme mating flexibility ensures that her place in this business will remain prevalent, and with the productivity her first daughters are showing to have in production then an investment in this cow family looks to be very financially wise.

UDE HAYLEIGH 5K  
2023-2024 PTP RING OF CHAMPIONS  
PUREBRED SIMMENTAL SHOW HEIFER OF THE YEAR  
CONGRATULATIONS BRADY EDGE!





2020-2021 TRIPLE CROWN WINNING PUREBRED SIMMENTAL HEIFER  
DAUGHTERS LOTS 36-42 · GRANDDAUGHTERS 43-46



Lot 36

## UDE HAYLEIGH 19N

ASA 4565203 | DOB 1/3/25 | TATTOO 19N | BREED PB SM

WLE COPACETIC E02

LLSF PAYS TO BELIEVE ZU194

TJSC COPING WITH DESTINY 9K



KDP MISS HOYA HAYLEIGH

TJSC DIAMONDS DESTINY 134C

K-LER/RC MISS HOYA SAXA

- We lead off the Simmental division of the 2025 "The Advantage" with a collection of Purebred daughters from the legendary, KDP Miss Hoya Hayleigh. As we have come to expect with each mating, she continues to reinvent herself with every opportunity, and this combination with the Supreme Champion Bull at the 2024 Cattleman's Congress, TJSC Coping With Destiny 9K, sets the tone for another big year of accomplishments to be accounted for on her resume.
- UDE Hayleigh 19N is one that we find very intriguing. She is super eccentric in the design of her front third, being sleek chested, necked and headed, and has no issues coming out tall at the top of her shoulder blade to give a stunning look on the profile. She explodes into a massive body cavity and rib cage, with a deep and soft underline and extra-stout bone work. She is the kind we love on the stand still, but once she is set into motion, she grabs another gear and separates herself into another league!
- Those looking to compete on a major level need to include this female on the shortlist.



KDP MISS HOYA HAYLEIGH  
2021 CATTLEMAN'S CONGRESS GRAND CHAMPION PUREBRED SIMMENTAL HEIFER  
DAM OF LOTS 36-42



TJSC COPING WITH DESTINY 9K  
2024 CATTLEMAN'S CONGRESS SUPREME CHAMPION BULL  
SIRE OF LOT 36



Lot 37

## UDE HAYLEIGH 49N

ASA 4565209 | DOB 2/18/25 | TATTOO 49N | BREED PB SM

HPF/HILL UPRISING C104

LLSF PAYS TO BELIEVE ZU194

SO REMEDY 7F

X

KDP MISS HOYA HAYLEIGH

B&K CREAM SODA 8D

K-LER/RC MISS HOYA SAXA

- You will never need to question if this Purebred female has enough cow power and maternal value, as UDE Hayleigh 49N delivers plenty to these claims.
- The beautiful blaze face markings of this FULL SISTER to UDE Hayleigh 5K are just the beginning of the long list of quality that you will find with this SO Remedy 7F daughter. She comes loaded with a voluptuous amount of body shape, with an ideal wedge design to her underline, square and attractive pin set, long and level hip design and hefty sized set of running gear, all while maintaining an ultra-attractive and feminine look about her front third.
- Regardless of when you want to set out on the tanbark this female will be ready to rumble with the best of them, she is high performing, early maturing and ahead of the game.
- From a generating standpoint, the future looks equally as promising as she fits the donor cow mold with a perfect score. We know we will be hearing about this female down the road, not just while she is in the showing, but when she retires from the chips and heads to the donor pen.



KDP MISS HOYA HAYLEIGH  
2020 NAILE GRAND CHAMPION PUREBRED SIMMENTAL HEIFER  
DAM OF LOTS 36-42



UDE HAYLEIGH 5K  
2023 NAILE GRAND CHAMPION PUREBRED SIMMENTAL HEIFER  
FULL SISTER TO LOT 37  
MATERNAL SISTER TO LOTS 36 & 38-42

# Lot THIRTY-EIGHT

- The perfect markings of this May born Purebred female are just the beginning of the quality that you will find with an inspection of UDE Hayleigh 396N.
- She and Lot 39 are full sisters that stem from the cornerstone of the Purebred Simmental division in KDP Miss Hoya Hayleigh and are sired by the 2023 NAILE Grand Champion Percentage Simmental Bull, WHF/JS/CCS Woodford J001. J001 has quickly sorted himself towards being one of the "go to" Simmental bulls in the business, with his first couple of calf crops yielding the goods for the most progressive programs in the nation.
- You will find this female to be extra attractive, high tying, long and level, with added foot size and quality, the presence of this female is just an added bonus.



WHF/JS/CCS WOODFORD J001  
2023 NAILE GRAND CHAMPION PERCENTAGE SIMMENTAL BULL  
SIRE OF LOTS 38 & 39



## UDE HAYLEIGH 396N

ASA 4565212 | DOB 5/2/25 | TATTOO 396N | BREED PB SM

EGL FIRESTEEL 103F

LLSF PAYS TO BELIEVE ZU194

WHF/JS/CCS WOODFORD J001



KDP MISS HOYA HAYLEIGH

WHF SUMMER 365C

K-LER/RC MISS HOYA SAXA

# Lot THIRTY-NINE

- From the combination of the Triple Crown winning, KDP Miss Hoya Hayleigh and the trending WHF/JS/CCS Woodford J001 delivers this square built, soft bodied, athletic built Purebred female that has a world of future ahead of her.
- We think with some patience and a good feed scoop, the skeleton and build of this one foreshadows a success story that replicates those of her maternal sisters that have been so successful in the ring, and dominant in the breeding pasture.



BLACK GOLD MS HAYLEIGH 153K  
2023 CWA FIRST LADY CLASSIC SUPREME CHAMPION HEIFER  
MATERNAL SISTER TO LOTS 36-42



## UDE HAYLEIGH 335N

ASA 4565211 | DOB 5/11/25 | TATTOO 335N | BREED PB SM

EGL FIRESTEEL 103F

LLSF PAYS TO BELIEVE ZU194

WHF/JS/CCS WOODFORD J001



KDP MISS HOYA HAYLEIGH

WHF SUMMER 365C

K-LER/RC MISS HOYA SAXA



UDE NEW HEIGHTS 62/87  
\$280,000 SIRE OF LOT 40-42



## LOT FORTY

### UDE HAYLEIGH 220N

ASA 4565213 | DOB 4/18/25 | TATTOO 220N | BREED 1/2 SM 1/2 AN

BNWZ DIGNITY 8017

LLSF PAYS TO BELIEVE ZU194

UDE NEW HEIGHTS 62/87



KDP MISS HOYA HAYLEIGH

FCF PHYLLIS 532

K-LER/RC MISS HOYA SAXA

- The UDE New Heights 62/87 x KDP Miss Hoya Hayleigh mating was one we had been dreaming up for some time, as it combines the best of both worlds and boy did it deliver upon the expectations with these three half-blood prospects.
- UDE Hayleigh 220N is deep middledd, flexible at the ground and has the added performance that makes her the kind that will work in the real world, long beyond her days at the end of a halter.
- When it comes to cow power you cannot find anything more reliable than the influences of KDP Miss Hoya Hayleigh on the bottom side of the equation. She has proven to deliver the goods with anything thrown her way, and this half-blood mating is no exception.

## LOT FORTY-ONE

### UDE HAYLEIGH 281N

ASA 4565214 | DOB 4/22/25 | TATTOO 281N | BREED 1/2 SM 1/2 AN

BNWZ DIGNITY 8017

LLSF PAYS TO BELIEVE ZU194

UDE NEW HEIGHTS 62/87



KDP MISS HOYA HAYLEIGH

FCF PHYLLIS 532

K-LER/RC MISS HOYA SAXA

- This daughter of the UDE New Heights 62/87 and KDP Miss Hoya Hayleigh mating is so genuine in her structural integrity and so seamless about the transitions between her pieces. Sure, you can change some things with feed, but there is no supplement that could inject the awesome look and design that you will find here.
- As you break UDE Hayleigh 281N down it becomes evident, that apart from a tail switch there is little further to desire, starting with the fundamentals as she comes with a big circumference of foot and bone, fluid and flexible joints and impeccable look from the side. Rest assured she is built adequately to carry the extra volume and mass that she is maturing with.



UDE HAYLEIGH 5K  
2023 FWSS GRAND CHAMPION PUREBRED SIMMENTAL HEIFER  
FULL SISTER TO LOT 37  
MATERNAL SISTER TO LOTS 36 & 38-42



## LOT FORTY-TWO

### UDE HAYLEIGH 324N

ASA 4565215 | DOB 5/5/25 | TATTOO 324N | BREED 1/2 SM 1/2 AN

BNWZ DIGNITY 8017

LLSF PAYS TO BELIEVE ZU194

UDE NEW HEIGHTS 62/87



KDP MISS HOYA HAYLEIGH

FCF PHYLLIS 532

K-LER/RC MISS HOYA SAXA

- Do not discount this young prospect, because with some patience, we believe the rewards will be significant.
- This third daughter of the UDE New Heights 62/87 x KDP Miss Hoya Hayleigh flush might be our favorite for a show heifer prospect, as she comes impeccable in her proportions and is super trendy in her lines. She has that chiseled head and jawline that will always draw attention, yet she still comes with some extra muscle shape and bone when you get to truly evaluating her quality.
- The genetic potential for excellence has been proven, the foundations are set, she has a high caliber build and comes with the guarantee of a cow family to set your satchel down on.



# Lot FORTY-THREE

- There could not be a better way to introduce the daughters of UDE Hayleigh 5K into "The Advantage" than with UDE Hayleigh 107N, she is one special creature that will be a female that will write her own list of accomplishments and be one we reference in future editions of this sale book.
- The championships gathered by UDE Hayleigh 5K were significant and include but are not limited to taking home banners at the Fort Worth Stock Show, the AJSA Summer Classic, the Iowa State Fair, the American Royal, the NAILE, and the NWSS. We believe she blazed a trail for this next generation to follow, and Lot 43 will be the one to carry the torch for the cow family!
- Elite quality resounds loud and clear here, this female is built with irresistible amounts of power, pin width, rib cage dimension, foot size and yet combines this density with the ability to motor with poise and grace. She will be ready to jackpot with this winter yet has the intangibles and ultimate level of completeness and balance to be dominant as a bred heifer on the big stage.
- We think this newest edition to the "Hayleigh" dynasty is of next level quality. She is unbelievably smooth and balanced, and we truly think that she has the quality to follow in the footsteps of her mother.



## UDE HAYLEIGH 107N

ASA 4565204 | DOB 2/25/25 | TATTOO 107N | BREED PB SM

WLE COPACETIC E02

SO REMEDY 7F

TJSC COPING WITH DESTINY 9K



UDE HAYLEIGH 5K

TJSC DIAMONDS DESTINY 134C

KDP MISS HOYA HAYLEIGH

# Lot FORTY-FOUR

- The story wrote by the dam of 184N, UDE Hayleigh 5K is as impressive as they come, and while she was not one of the highest selling females in "The Advantage" she certainly transformed into one of the success stories to evolve from the 2022 sale. She proves that opportunities to purchase high caliber champions sell throughout the offering, at all different price points.
- The story of TJSC Coping With Destiny 9K trends in a similar direction as UDE Hayleigh 5K, sporting a pedigree that features multiple generations of champions, and then becoming one himself. His crowning glory came when he was slapped Supreme Champion Bull at the 2024 Cattleman's Congress.
- We admire the balance and completeness of this Purebred, in fact in that regard she reminds us of her mother at this same stage, not extreme in any one area, but hard to find a fault in.



## UDE HAYLEIGH 184N

ASA 4565207 | DOB 3/1/25 | TATTOO 184N | BREED PB SM

WLE COPACETIC E02

SO REMEDY 7F

TJSC COPING WITH DESTINY 9K



UDE HAYLEIGH 5K

TJSC DIAMONDS DESTINY 134C

KDP MISS HOYA HAYLEIGH



UDE HAYLEIGH 5K  
 2023 NAILE GRAND CHAMPION  
 PUREBRED SIMMENTAL HEIFER  
 DAM OF LOTS 43-46



## UDE HAYLEIGH 173N

ASA 4565206 | DOB 4/9/25 | TATTOO 173N | BREED PB SM

WLE COPACETIC E02

SO REMEDY 7F

TJSC COPING WITH DESTINY 9K

X

UDE HAYLEIGH 5K

TJSC DIAMONDS DESTINY 134C

KDP MISS HOYA HAYLEIGH

# Lot FORTY-FIVE

- This TJSC Coping With Destiny 9K daughter from the most decorated Purebred Simmental heifer of the 2023 show season is the most "out there" in regard to her neck attachment, eye appeal and oversized foot and bone. She has all the intangibles that it takes to stand out and is coming with the balance and power to tie it all together.
- If you like them with all the extras, and are willing to roll the dice, then we think that this female has the pieces to generate the kind that are met with big checks.



UDE HAYLEIGH 5K  
2023 IA STATE FAIR GRAND CHAMPION  
SIMMENTAL HEIFER  
DAM OF LOTS 43-46



## UDE HAYLEIGH 195N

ASA 4565210 | DOB 3/16/25 | TATTOO 195N | BREED PB SM

W/C BANKROLL 811D

SO REMEDY 7F

RJ TRUST FUND 212K

X

UDE HAYLEIGH 5K

HARA'S KIM KARDASHIAN 1C

KDP MISS HOYA HAYLEIGH

# Lot FORTY-SIX

- We are excited to debut the RJ Trust Fund 212K mating on the dominating UDE Hayleigh 5K female, two young but promising sources of genetic and phenotypic quality in the Simmental business.
- 195N certainly offers up the opportunity to catapult your program to the forefront of the future of the breed, stemming from two of the hottest individuals in the business.
- This Purebred female comes with impressive mass and power; she is super shapely in her pin set and paints a very intriguing outline. She looks like the kind that will turn into an awesome cow in production.



UDE HAYLEIGH 5K  
2023 AMERICAN ROYAL GRAND  
CHAMPION PUREBRED SIMMENTAL HEIFER  
DAM OF LOTS 43-46



UDE HAYLEIGH 5K  
2023 AJSA NATIONAL CLASSIC 5TH OVERALL  
PUREBRED SIMMENTAL HEIFER  
DAM OF LOTS 43-46



# Lot 47

## UDE PRINCESS 48N

ASA 4565223 | DOB 1/21/25 | TATTOO 48N | BREED 3/4 SM / LOW CHIANINA

W/C RELENTLESS 32C

MR HOC BROKER

JSUL SOMETHING ABOUT MARY 842I



HARAS MISS PRINCESS 100Z

JBSF PROUD MARY

HARAS HAIRIETTA CLONE H4W

- The maternal power that backs the next three SimGenetic prospects has served a long tenure of excellence and has cemented her position upon the best to ever to it. Haras Miss Princess 100Z was a dominant champion herself for Maddy, yet the best was still to come with her track record in production, and the propulsion she caused for the Simmental program in Sioux City.
- UDE Princess 48N is the JSUL Something About Mary 8421 daughter of the Haras Miss Princess 100Z donor that is particularly long and attractive in her build. We love the way she ties out of her shoulder, and the added look and presence that we got out of this mating. When it comes to power and body shape you can expect the trademarked "100Z" design that is bold, curvy and impressive.
- It's hard not to appreciate the captivating looks and presence that this heavy-duty female demands, she is one that is ready to roll as soon as the gavel drops, and will be a force to be reckoned with, early and often.



HARAS MISS PRINCESS 100Z  
2013 NWSS GRAND CHAMPION PERCENTAGE SIMMENTAL HEIFER  
DAM OF LOTS 47-49



UDE PRINCESS 3J  
2022 IA STATE FAIR GRAND CHAMPION PERCENTAGE SIMMENTAL HEIFER  
\$100,000 FULL SISTER TO LOT 47  
MATERNAL SISTER TO LOTS 48 & 49



# Lot FORTY-EIGHT

- The most recent champion to stem from Haras Miss Princess 100Z would be Preston Hartman's Reserve Champion Percentage Open Simmental Female at the 2023 North American, and if we had to describe what she looked like at this stage of the game, you would think we were describing Lot 48.
- This cookie cutter of the impressive Hartman champion is one that defies unbelievable proportions, being massive legged, so low in her underline and so tight and refined about her throat and chest floor. She is just so unique because of how bold she is in her design, how huge she is in her body cavity, and how unbelievably agile she is on the move.
- The search is over for a high caliber show heifer that will transform into a versatile breeding piece that is designed for composite show heifer and steer generating applications.

## UDE PRINCESS 52N

ASA 4565221 | DOB 1/26/25 | TATTOO 52N | BREED 1/2 SM / LOW CHIANINA

SILVEIRAS STYLE 9303

MR HOC BROKER

W/C STYLE 69E "FAMILY TRADITION"

X

HARAS MISS PRINCESS 100Z

MISS WERNING KP 8543U

HARAS HAIRIETTA CLONE H4W



BLACK GOLD/PAW MS PRINCESS  
2023 NAILE RESERVE GRAND CHAMPION  
PERCENTAGE SIMMENTAL HEIFER  
MATERNAL SISTER TO LOTS 47-49



# Lot FORTY-NINE

- This high percentage female paints more than just a pretty picture, this daughter of W/C Style 69E "Family Tradition" from the iconic Haras Miss Princess 100Z comes with all the extras in regard to bone, substance, and body shape; she is an impressive combination of power and poise.
- Keep in mind that the maternal backing of UDE Princess 41N has been the source of multiple success stories in this business, not just directly but as a whole, the daughters of the MR HOC Broker x Haras Hairietta H4W have become one of the most recognizable sources of quality known to the show cattle business.

## UDE PRINCESS 41N

ASA 4565220 | DOB 2/14/25 | TATTOO 41N | BREED 1/2 SM / LOW CHIANINA

SILVEIRAS STYLE 9303

MR HOC BROKER

W/C STYLE 69E "FAMILY TRADITION"

X

HARAS MISS PRINCESS 100Z

MISS WERNING KP 8543U

HARAS HAIRIETTA CLONE H4W



UDE PRINCESS 172L  
2024 AMERICAN ROYAL GRAND CHAMPION PERCENTAGE SIMMENTAL HEIFER  
MATERNAL SISTER TO LOTS 47-49

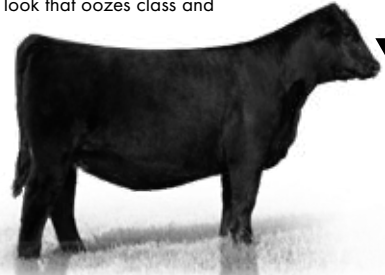
# Lot FIFTY

- UDE Young Love 39N is the first of two females that are supported by the 2017 NAILE Reserve Grand Champion Percentage Simmental Heifer, MMK Young Love 504D, a daughter of the iconic Triple Crown winning MR HOC Broker that is backed by the Famous 7001 sired daughter of the prolific 056 donor at Michael Kinna's in Maryland.
- The daughters of MMK Young Love 504D consistently come with more curvature and softness than you would expect from Simmental females, yet you don't have to make any sacrifices for build quality and overall eye appeal.
- Sired by the \$200,000 EC Rebel 156F, this January born three-quarter blood stunner is one that impresses with her stoutness, dimension, width of base, dominating feature and overall balance. What might be most impressive is the way that she is able to tie together these big and rugged pieces into a very eloquent and seamless look that oozes class and production in one package.



## UDE YOUNG LOVE 39N

ASA 4565222 | DOB 1/5/25 | TATTOO 39N | BREED 3/4 SM 1/4 AN



UDE YOUNG LOVE 38M  
MATERNAL SISTER TO LOTS 50 & 51

PROFIT	MR HOC BROKER
EC REBEL 156F	X MMK YOUNG LOVE 504D
DSFF COUNTESS 357D	

# Lot FIFTY-ONE

- The 2017 NAILE Reserve Grand Champion Percentage Simmental Heifer, MMK Young Love 504D meets with the 2024 Cattleman's Congress Supreme Champion Bull, TJSC Coping With Destiny 9k in the star-studded pedigree of this SimGenetic prospect.
- The two MMK Young Love 504D daughters merchandised in last year's "The Advantage" were very popular, with a Profit daughter bringing \$10,000 and a UDE Profit 67F "Code Red" daughter commanding \$22,000.
- With the purple banners that line the pedigree here, it goes without saying that the future looks bright for this eye appealing gem that has a striking presence, upmost look and elegance, impressive foot size and shape, and just overall outlier build and design.



## UDE YOUNG LOVE 2i8N

ASA 4565219 | DOB 4/5/25 | TATTOO 218N | BREED 3/4 SM 1/4 AN

WLE COPACETIC E02	MR HOC BROKER
TJSC COPING WITH DESTINY 9K	X MMK YOUNG LOVE 504D
TJSC DIAMONDS DESTINY 134C	



MMK YOUNG LOVE 504D  
2017 NAILE RESERVE GRAND CHAMPION PERCENTAGE SIMMENTAL HEIFER  
DAM OF LOTS 50 & 51



## LOT FIFTY-TWO

### UDE PHYLLIS 95N

ASA 4565216 | DOB 3/5/25 | TATTOO 95N | BREED 1/2 SM 1/2 AN

HPF/HILL UPRISING C104

SCC FIRST-N-GOAL GAF 114

SO REMEDY 7F



FCF PHYLLIS 532

B&K CREAM SODA 8D

SCC PHYLLIS 051

- FCF Phyllis 532 proves that there is nothing she can't do with this trio of Percentage Simmental daughters that look to have the quality to dominate across breed lines. These three SO Remedy 7F daughters offer quality well beyond being just show heifers but stand as very impressive breeding pieces that will serve up ROI on a platter.
- UDE Phyllis 95N is the heavy duty, large outlined and burly built sister of the SO Remedy 7F x FCF Phyllis 532 tribe, she comes with everything you could dream of in regards to cow power and generating potential.
- If you are looking for the combination female, being a solid show heifer, and incredible donor prospect then you are in the right place here with UDE Phyllis 95N.



## LOT FIFTY-THREE

### UDE PHYLLIS 146N

ASA 4565217 | DOB 4/8/25 | TATTOO 146N | BREED 1/2 SM 1/2 AN

HPF/HILL UPRISING C104

SCC FIRST-N-GOAL GAF 114

SO REMEDY 7F



FCF PHYLLIS 532

B&K CREAM SODA 8D

SCC PHYLLIS 051

- UDE Phyllis 146N will be the choice of show heifer enthusiasts that are ready to play ball early and often! While she may be younger, she certainly has matured with impressive proportions, being extra soft and robust in her underline and ribcage. She comes hinged off an awesome hind leg and carries herself with a presence and arrogance that demands attention.
- Carrying the cow power of FCF Phyllis 532 certainly earns brownie points here, she has been a cornerstone of the Angus program, being the dam of multiple high end success stories on the female side, and of course is the dam of the \$280,000 half interest, UDE New Heights 62/87 that is rewriting the manual for Angus breeders. From a Simmental standpoint she has certainly proven herself before with a Profit sired daughter that Kinnick Paulsen's campaigned. Her wins included being the Supreme Champion Overall Female in both rings at the 2023 Badger Brawl and then was the Reserve Supreme Champion Female at the 2024 Iowa State Fair!

success stories on the female side, and of course is the dam of the \$280,000 half interest, UDE New Heights 62/87 that is rewriting the manual for Angus breeders. From a Simmental standpoint she has certainly proven herself before with a Profit sired daughter that Kinnick Paulsen's campaigned. Her wins included being the Supreme Champion Overall Female in both rings at the 2023 Badger Brawl and then was the Reserve Supreme Champion Female at the 2024 Iowa State Fair!



## LOT FIFTY-FOUR

### UDE PHYLLIS 149N

ASA 4565218 | DOB 4/18/25 | TATTOO 149N | BREED 1/2 SM 1/2 AN

HPF/HILL UPRISING C104

SCC FIRST-N-GOAL GAF 114

SO REMEDY 7F



FCF PHYLLIS 532

B&K CREAM SODA 8D

SCC PHYLLIS 051

- The youngest of the SO Remedy 7F x FCF Phyllis 532 daughters comes with undeniable upside potential. While she may not be the overwhelming forces that her sisters are, you cannot deny the quality of build and design that she is blessed with. She motors with flawless comfort and reaches and tracks effortlessly.
- The incredible silhouette and outline of UDE Phyllis 149N helps to picture the potential that is ahead for this prospect, as we think with some maturity, she will make an awesome bred heifer that will compete on the highest level.

DAUGHTERS LOTS 55 & 56 · GRANDDAUGHTER LOT 57 & 58

# RED THUNDER

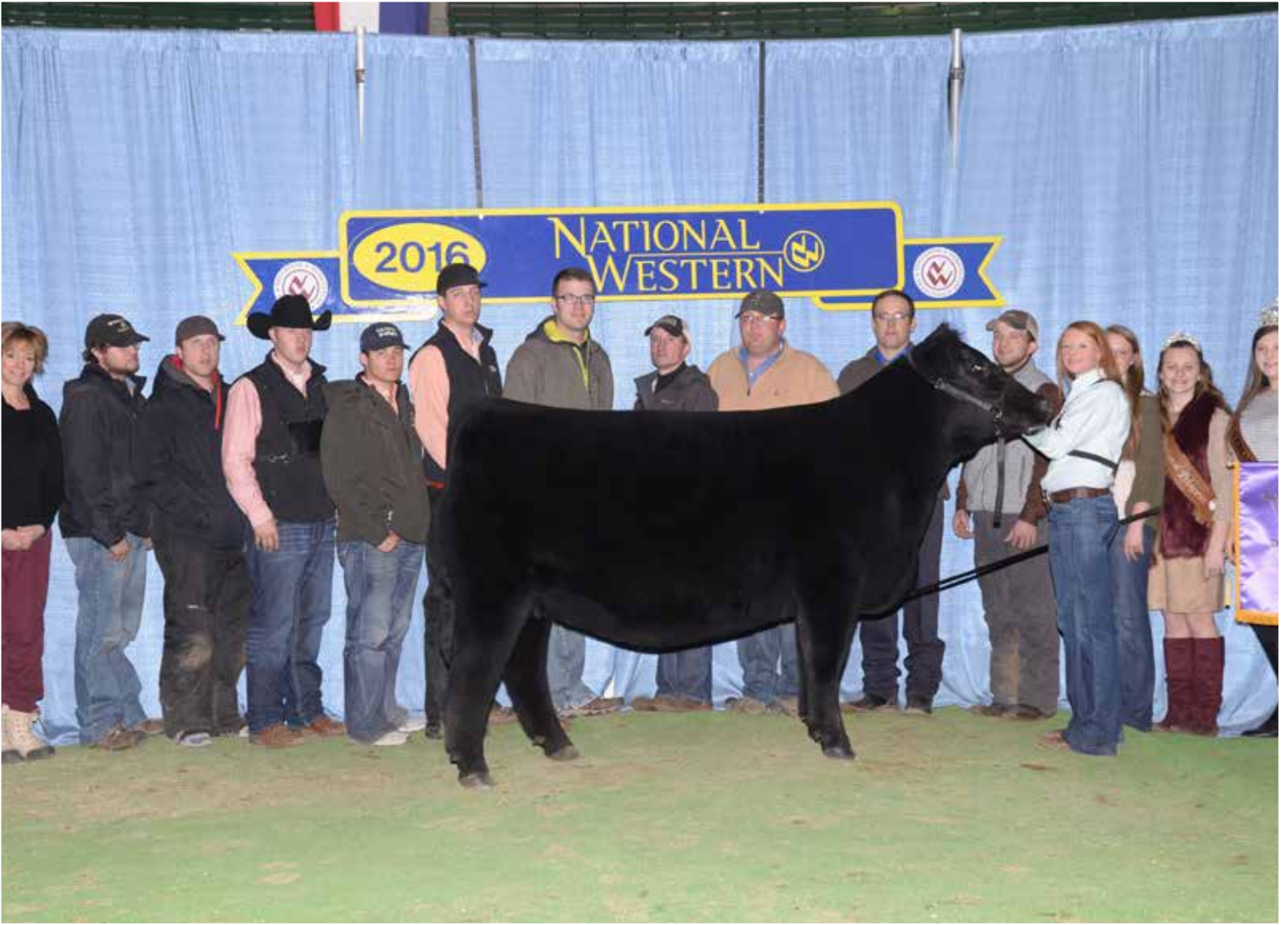
JSUL Red Thunder 9051W would classify as one of the most dominant producing females in the show cattle business. Her lifetime earnings, and resume of champions is unparalleled and her reign continues year after year as she generates more high sellers and champions.

The Style x Red Thunder mating remains one of the most dominant show heifer mating's of the past decade! Over the past two years, six daughters of JSUL Red Thunder 9051W averaged more than **\$15,000** per head. A daughter of 9051W topped the Chianina division of this sale last year where she sold for **\$32,000** to the Rozeboom family of Iowa. Another daughter of 9051W sold in October of 2022 for **\$30,000** to the Hanes family of Ohio. The list is long and illustrious, and below are some of the shining moments that this mating has caused for the families who have invested; in "The Advantage" Production Sale of 2020, this mating yielded the **\$50,000** sale feature, UDE Black Thunder 5H. You will now recognize UDE Black Thunder 5H or "Gloria" as the knockout donor to arise from the 2023 sale season that in her first set of embryo calves raised the **\$101,500**, Chosen One daughter and the dam of the Lot 57 & 58 Mainetainer prospects in this sale.

In October of 2021 the Silveiras Style 9303 x JSUL Red Thunder 9051W mating delivered as UDE Stylin' Thunder 22J ET commanded an **\$80,000** hammer price! She was shown by the Gensini's of Illinois. 22J would have been the 3rd Overall Prospect Heifer at the 2022 National Western Stock Show and the 5th Overall Female at the 2022 Illinois State Fair. Spencer Goettemoeller has campaigned his dominant Style x Red Thunder daughter to countless victories! Miss Worthy 1H ET is the result of an embryo purchase through EOS that developed into one of the most dominant Chianina females in recent history! She was selected as the 2020 NAILE Division I Champion, 2021 IN State Fair Grand Champion Chianina and 3rd Overall Junior Breeding Heifer, as well as the 2021 American Royal Reserve Grand Champion Chianina Heifer. However, her most impressive claim to fame would be her back-to-back defense of the National Junior Heifer Show Grand Champion Chianina Heifer title in 2022 as a cow calf pair after winning the same title as a bred heifer in 2021.

Prior to the aforementioned successes, the trail was blazed by a large group of 'Red Thunder' daughters. Here are some of the highlights: UDE Stylin' 28F was the highly decorated 2019 NWSS Grand Champion Prospect Heifer for Kade Gensini. UDE Kate Spade 59D ET sold to Whitney Walker for **\$45,000** and was the 2017 NWSS Grand Champion Prospect Heifer. UDE Stylish Lady 9D ET sold to Abbie Collins for **\$90,000** and was named Supreme Female at the 2017 Scarlet and Gray, 2017 FWSS Reserve Chianina and Supreme Female 2017 Ohio State Fair. UDE Moana 162E sold to Sammi Schrag and was named Champion Female at the 2017 Jordan Mack Memorial. UDE She's Stylin sold for **\$27,500** to Vada Vickland and was named 2015 NWSS 4th Overall Prospect Heifer, 2015 NAILE Grand Champion Chianina Heifer Junior and Open Shows, and 2016 NWSS Grand Champion Chianina Heifer. UDE Chanel 39D ET sold to the Skiles Family for **\$55,000** and was named Champion Heifer at the 2016 Kansas Beef Expo. UDE Vera 98D ET sold to Elliston Morey and was named Champion Chianina at the 2016 Badger Kick Off Classic. UDE Glamour Girl 18B has evolved as one of the most dominant producing composite show heifer donors at Sullivan Farms, producing countless high sellers and champions. A daughter of 9051W sired by SMA Watchout 482 commanded a **\$65,000** hammer price in "The Advantage" Production Sale in 2019. She went on to be the calf champion Chianina female at the 2019 NAILE. She was the 2020 NWSS 3rd Overall Prospect Heifer and was selected as the 5th Overall Chianina Heifer at the National Junior Heifer Show for Turner Longacre of Oklahoma.

F U L L   S I S T E R   T O   L O T   5 5



A TIMELESS MATING!



# Lot 55

## UDE BLACK THUNDER 42N ET

ACA 428678 | DOB 2/23/25 | TATTOO 42N | BREED 7.47% CHIANINA

GAMBLES HOT ROD	ASHW WHO DA MAN
SILVEIRAS STYLE 9303	<b>X</b> JSUL RED THUNDER 9051W-2
SILVEIRAS ELBA 2520	SULL 60

- "If it ain't broke, don't fix it" would be the mantra here. UDE Black Thunder 42N ET is a full sister to a long and prestigious list of females that built the brand for the Udell firm.
- The Silveiras Style 9303 x JSUL Red Thunder 9051W mating will go down as one of the most dominant, and regal Chianina matings of modern history, and was a pivot point in the show heifer business towards the stock we see winning today.
- Many of the champions mentioned on the introduction page to the JSUL Red Thunder 9051W daughters are full sisters to this February prospect, and she looks to carry the torch for those who have blazed the trail before her.
- We love the upmost balance and correctness of this female, she sets to the ground super square and flexible, is extra round and soft in her middle third, and comes with an eloquent profile and outline from the profile.



UDE STYLIN' THUNDER 22J ET  
2022 IL STATE FAIR 5TH OVERALL JUNIOR BREEDING HEIFER  
FULL SISTER TO LOT 55



UDE STYLIN' THUNDER 22J ET  
2022 NWSS 3RD OVERALL PROSPECT HEIFER  
FULL SISTER TO LOT 55



UDE STEAL MY THUNDER 110M ET  
2025 NORTHWEST IOWA SHOWDOWN GRAND CHAMPION BREEDING HEIFER  
FULL SISTER TO LOT 55



Lot 56

## UDE BLACK THUNDER 192N ET

ACA 428677 | DOB 3/11/25 | TATTOO 192N | BREED 7.8% CHIANINA / MAINETAINER

TJSC END GAME 61G ET

ASHW WHO DA MAN

ROSE APEX 3204L

X

JSUL RED THUNDER 9051W-2

UDE QUEEN RUTH 0204

SULL 60

- We love the type and kind of this ultra-functional and maternally built Chianina female. She is one of the first ROSE Apex 3204L daughters to go under the hammer and is one that sets the tone for high quality expectations from the sire line.
- This new mating on JSUL Red Thunder 9051W is all we could have imagined and comes with some added looseness of structure and body cavity, along with a stout yet flawless structural build.
- Her pedigree suggests that she has the potential to run with the best of them, as the maternal backing of the legendary JSUL Red Thunder 9051W means nothing is out of reach. 9051W is a female that has amassed well into the 7-figure range in progeny sales during her fruitful breeding career in Sioux City.



MISS WORTHY 1H ET  
2021 IN STATE FAIR 3RD OVERALL 4-H BREEDING HEIFER  
MATERNAL SISTER TO LOT 56



MISS WORTHY 1H ET  
2022 NATIONAL JUNIOR HEIFER SHOW GRAND CHAMPION CHIANINA HEIFER  
MATERNAL SISTER TO LOT 56



ROSE APEX 3204L  
SIRE OF LOT 56



# Lot 57

## UDE LGFD DEANA CARTER 30N ET

AMAA 564693 | DOB 2/17/25 | TATTOO MMU 30N | BREED MAINTAINER

MINN LIVE ACTION 203Y

SILVEIRAS STYLE 9303

WEIS ALL ME 10F



UDE BLACK THUNDER 5H ET

BSC CANDI 42Z

JSUL RED THUNDER 9051W

- The daughters of UDE Black Thunder 5H ET from Weis All Me 10F are set to draw a crowd, as they deliver on some hefty expectations of the flush, particularly when you consider the track record of high sellers and banner winners that line the pedigree's here.
- UDE Black Thunder 5H is a result of the legendary, Silveiras Style 9303 x JSUL Red Thunder 9051W mating that was the go-to mating for National Champion and high selling Chianina females over the past decade, and she herself hung plenty of banners for Jade Beeson during her career. In production she has been on a rampage to prove herself as a program changer, with both steer and heifer progeny ringing the bell.
- This red & white delight is the next installment of the dynasty, with an incomparable combination of look, maternal feature, bone, foot and some serious shape and muscle!
- This is a bid to own situation!



UDE BLACK THUNDER 5H ET  
2020 JORDAN MACK MEMORIAL RESERVE SUPREME CHAMPION HEIFER  
DAM OF LOTS 57 & 58



\$101,500 HEIFER Sired by CHOSEN ONE  
MATERNAL SISTER TO LOTS 57 & 58



# Lot FIFTY-EIGHT

- If you like to push the limits and opt for stock that stand outside the norm then make your way to Sioux City to witness this special creature. UDE LGFD Gloria 45N ET screams for attention with her unkosher look and eye appeal, her eccentric ear set, high neck set and ultra-chiseled front third make her a very intriguing member of the Maine influenced division.
- She is a direct daughter of the UDE Black Thunder 5H ET female that was a dominant champion that has since been making a splash in production, with her first daughter to sell commanding \$101,500.
- This Weis All Me 10F daughter has some of the wildest pieces you can put into livestock, and while we have full belief that she is going to be a juggernaut on the tanbark, we too think she is going to be an absolutely incredible breeding piece whose potential is unlimited.

## UDE LGFD GLORIA 45N ET

AMAA 564694 | DOB 1/14/25 | TATTOO MMU 45N | BREED MAINTAINER

MINN LIVE ACTION 203Y

SILVEIRAS STYLE 9303

WEIS ALL ME 10F  
BSC CANDI 42Z



UDE BLACK THUNDER 5H ET  
JSUL RED THUNDER 9051W



UDE LGFD GLORIA 357M  
\$10,500 FULL SISTER TO LOTS 57 & 58



# Lot FIFTY-NINE

- The Maine Angus business is on fire right now, and it's because of stock built just like UDE Ellie 9197. This daughter of Weis All Me 10F comes built super complete and functional in her basic design, with a running gear that will never be questioned, and a look and eye appeal that will always catch a look.
- This high-quality show heifer prospect paints a super powerful picture from the side, and comes packing a punch with her impressive muscle shape, pin width and spring of rib. Maternally she stems from the high selling, UDE Ellie 9197, who is a daughter of the powerful EXAR Blue Chip 1877B x SLL Ellie 2201 mating that was a longtime source of elite quality for the program and would also be responsible for the iconic, UDE Ellie 9230.

## UDE ELLIE 77N ET

AMAA 564692 | DOB 2/21/25 | TATTOO MMU 77N | BREED MAINE ANGUS

MINN LIVE ACTION 203Y

EXAR BLUE CHIP 1877B

WEIS ALL ME 10F  
BSC CANDI 42Z



UDE ELLIE 9197  
SLL ELLIE 2201



UDE ELLIE 9197  
2020 KY BEEF EXPO SUPREME CHAMPION HEIFER  
DAM OF LOT 59



# Lot 60

## UDE HAWK MARGO 34N ET

AHA 44693597 | DOB 2/10/25 | TATTOO 34N | BREED HORNED HEREFORD

UPS SENSATION 2296 ET	AH JDH CRACKER JACK 26U ET
KLD RW MARKSMAN D87 ET	<b>X</b> HAPP MIRAGE 1327
RW MINDY 3078 6096	HAPP MJH 945 INSTYLE 1115

- When it comes to being royally bred, the lone Hereford female in the offering steps up to the plate set by the elite caliber cow families represented in every other breed division. UDE Mirage 34N is a direct daughter of the trendsetting, HAPP Mirage 1327. 1327 is the dam of BOTH the 2022 JNHE Grand Champion Horned Hereford Heifer and 2022 JNHE Grand Champion Polled Hereford Heifer, a feat that had NEVER been accomplished before.
- A full sister to 34N, Hawk Markle 9L ET was the 2024 IA State Fair Grand Champion Hereford Heifer, 2024 JNHE Champion Division XIII Polled Hereford Heifer, 2024 American Royal Grand Champion Junior Hereford Heifer and the 2024 American Royal Reserve Grand Champion Open Hereford Heifer for the Paulsen family.
- Another full sister was campaigned by the Dunklau family last year; she was selected as the 2024 NAILE Grand Champion Open and Junior Hereford Heifer. Hawk MC Macy 307 ET finished her run on the green chips as she was slapped 3rd Overall Junior Breeding Heifer.
- While the bar has been set high, we have every belief that this next edition to the family tree has the capabilities of matching her sisters resumes. The incredible outline and proportions of UDE Mirage 34N set her into a league of her own, she is a high caliber candidate that will be an absolute force on the tanbark.



HAWK MYLA 39J ET  
2022 JNHE GRAND CHAMPION POLLED HEREFORD HEIFER  
FULL SISTER TO LOT 60



HAWK MURPHY 14J ET  
2022 JNHE GRAND CHAMPION HORNED HEREFORD HEIFER  
FULL SISTER TO LOT 60

SIoux COUNTY YOUTH

FAIR

2025

H U L L C O O P

# SHOW

712-439-2831 805 Elm St. Hull, IA 51239



NOTHING COMPARES







P.O. BOX Z  
DE SOTO, KS 66018



**2024 AMERICAN ROYAL  
GRAND CHAMPION PERCENTAGE SIMMENTAL HEIFER**  
CONGRATULATIONS BRENNIA BARTLOW!

**2024 AMERICAN ROYAL  
GRAND CHAMPION PUREBRED SIMMENTAL HEIFER**  
CONGRATULATIONS BRODY WENELLI

*The*

# ADVANTAGE

PRODUCTION SALE

SATURDAY, OCTOBER 18, 2025 • 6 O’CLOCK IN THE EVENING • SIOUX CITY, IOWA