

SOUTHERN BELLES

FALL PRODUCTION SALE

SATURDAY, NOVEMBER 22, 2025

1:00 PM IN MILLSAP, TEXAS



SALE *information*

SATURDAY, NOVEMBER 22 • 1 PM • CCI.LIVE



SALE SCHEDULE

Lunch, 11:30 AM

The Southern Belles Female Sale, Noon

SALE LOCATION

Aces Wild Ranch

10111 Wolf Hollow

Millsap, Texas 76066

SALE DAY CONTACTS

Jed Watje, 817.600.1082

Tracy Watje, 817.925.5212

Jarred Hobbs, 785.230.6684

AUCTIONEER

Jered Shipman, 806.983.7226



SALE MANAGEMENT

Innovation AgMarketing LLC

Graham Blagg, 530.913.6418

Tim Anderson, 605.682.9343

Jered Shipman, 806.983.7226

InnovationAgMarketing.com

RING STAFF

Cody Beck, AICA Field Staff, 765.719.1622

Colton Pratz, OK Cowman, 405.385.1054

Phil Stoll, Weekly Livestock Reporter, 817.366.7332

Mitchell Armitage, Special Assignment, 405.641.9438

HOTELS

Holiday Inn Express & Suites Weatherford, 817.341.6299

Fairfield Inn & Suites by Marriott Weatherford, 817.599.4040

Hampton Inn & Suites Weatherford, 817.495.9300

TRAVEL

Dallas-Fort Worth International Airport, 71 Miles

Dallas Love Field Airport, 80 Miles

DELIVERY & YARDAGE

Cattle will be available for load out sale day after complete payment has been made. Aces Wild Ranch will help with arranging trucking of females immediately after the sale, please reach out to Jed for more information. Cattle that have been purchased and have no plan made for movement will incur a yardage fee from the 15th of December.

Trucking, Kip Childers, 256.303.3382

ANNOUNCEMENTS

Announcements made sale day and from the auction block during the sale take precedence over printed materials associated with this sale. Anyone attending this sale attends at their own risk. Aces Wild Ranch and sale team will not be held responsible for any personal injury for attending this sale.

TERMS & CONDITIONS

The terms of the sale are cash or good check payable immediately upon the conclusion of the sale before animals will be removed. Cattle sell under the standard terms of their respective breed association. All sales are final, and the cattle will become the property of the buyer when the auctioneer says "SOLD". All females are sold as sound breeders. Seller guarantees each female to produce a live calf or transferrable embryos.

EPDs

The EPDs listed are Fall 2025 numbers. Please note that EPDs may change from the time the sale catalog is printed until registration papers are transferred.

INSURANCE

We recommend serious consideration is taken about insuring your livestock purchases. Insurance will be available sale day via James F. Bessler, LLC.

James F. Bessler, 815.762.2641

812 McBreyer Pl • Fort Worth, TX 76244

WELCOME TO AWR

I am extremely excited to invite you to this third edition of the "Southern Belles" Fall Production Sale! We could not be more excited to bring you a dynamic offering of females that are supported by some of the most proven and prolific matrons in the industry. We are proud to have formed a partnership between Jacob Choate, Javier Ramirez and myself, Jed Watje, which will be referred to as The Gamblers, LLC moving forward into the future!

It has always been my passion to accumulate and raise the best genetics that Charolais breed has to offer, however over the last several years we have taken a different approach and diversified our interests at Aces Wild Ranch. The constantly evolving beef cattle industry has rigorous demands, therefore we felt it was completely necessary to offer a wider variety of breeds for our loyal customer base. The cattle in this offering have the credential to go on to add significant value to your programs!

Our industry is currently setting records in global demand. As you know, our supply is at a record low, with nothing but upside ahead for the future. The industry starts with the seedstock sector, and with feed availability, and climate challenges, proving to be the key economic drivers. I am very confident in the cattle in this offering, and I am excited to watch them work in your programs. I would like to stay involved with each of you long after the sale and continue to work together to improve this great industry together!

None of this would be possible without being blessed to be surrounded by the best friends, and partners in not only the beef industry, but the entire world! My biggest strength is knowing what I am NOT good at and finding the people that are very best at various aspects of the cattle business, and I so grateful to have such an awesome team! None of this would be possible without the staff here at AWR, and the team at Innovation AgMarketing.

At Aces Wild Ranch, we are excited to offer our newly developed investment program that is focused on absentee ownership and is tailored for net worth growth with the chance to be a part of the Texas cattle industry! For more information, please do not hesitate to reach out with any questions, we'd love to visit with you about these dynamic opportunities!

Please come and enjoy some Southern hospitality at the "Southern Belles" Fall Production Sale. Call upon me, or the rest of the AWR crew at any time if we can help assist with travel arrangements or answer any questions. Make plans now to stay after the sale for some incredible live entertainment provided by the very talented Tyler Bond!

Jed Watje



THE GAMBLERS, LLC



LIVE ENTERTAINMENT
POST SALE FEATURING
TYLER BOND!





A NOTE FROM THE *sale management*

Networking is a crucial part of any successful business. Those who build more connections tend to be more successful because of contact references and name sharing. Regular communication with industry contacts, whether by phone, email, or social media, maintains a strong presence for any business. In the beef industry, stage presence and name recognition are vital for an outfit not only to expand its reach but also to promote the final product effectively.

Jed Watje of Aces Wild Ranch has applied fundamental and professional networking skills since his youth. His role on the AIJCA Board of Directors was just a steppingstone to how we know him today. He has an inviting personality, and after shaking on a potential deal or agreement, it is as genuine as his words. Mr. Watje is one of the biggest supporters of junior beef programs in the industry and is one of the best advocates for what those programs can do for our youth.

The firm has traveled across the country over the past three decades to gather and develop from top-quality cow families and programs known in the industry. His passion for the Charolais breed is relentless as he continues to seek out and acquire the key pieces to make the white-hided, high-performance cattle more accepted and versatile in the industry. AWR has also invested in and explored the Angus and SimGenetic circles, utilizing some of the best donor females available from the most progressive operations in the land. The AWR program aims to be your one-stop shop for all your beef industry needs, offering multiple efficient and profitable options.

Jed and his team continue to work tirelessly not only to improve the stock but also to strengthen and extend current relationships, and to meet and establish new ones. The more assets they have for the existing and prospective customer base to utilize, the stronger the AWR brand will be for the years ahead. As an industry, we are indeed in positive times, and when you hitch your team to the tools that Jed and Company offer, your experience in this evolving business will be enhanced.

The 2025 offering is fantastic and saturated with opportunity. If you have not made the trip to west of the "Westoplex," we certainly encourage the trip. Food and hospitality will be excellent, but the Ft. Worth weekend experience is guaranteed to be second to none. Make it a weekend and join the AWR Crew for a weekend filled with entertainment, fellowship, and great cattle.

We hope to see you all at the sale! In the event you cannot make it down or need additional information or assistance with the offering, feel free to reach out to any member of the Innovation AgMarketing Team for those needs as we are happy to assist. Thank you for your attention and interest in the product of Aces Wild Ranch.

Epaham Blagg Erin Anderson Jered Shipman

The

SOUTHERN BELLES

FEMALE SALE

-W



lot x _____ SEMEN



LOT X
trailblazer
SEMEN

X **AWR TRAILBLAZER 355L ET**
AICA EM994342 • DOB 6/15/24 • TATTOO 355L • BREED CHAROLAIS

CCC WC REDEMPTION 7143 PLD ET
PCC FORCE OF NATURE 122J ET
BRCHE BERKLY ANN 8507 PLD ET
M&M OUTSIDER 4003 PLD
RF SC MISS MAURA 8221 ET
B3 MISS MAURA 17X ET

CE	BW	WW	YW	MILK	REA	MARB	TSI
11	1.2	68	115	24	0.72	0.07	251

SELLING 10 PACKAGES OF 2 UNITS OF CONVENTIONAL SEMEN ON AWR TRAILBLAZER 355L ET.

We are excited to announce the opportunity to invest into the genetic powers of this full brother to one of the most dominant champions in the Charolais breed of the past couple of years, Claire Norris' back-to-back AIJCA Grand Champion Owned Female, and the 56th National Champion Charolais Female, RF Miss Maura 3322 ET. Being a direct son of the most exciting Charolais donor in the breed currently, links him not only to the Norris Champion, but also RF Miss Maura 2331 ET, that was shown by Trace Ridder and was the 2023-24 AICA Female of the Year, with her highlighting wins of Grand Champion Female at the 2023 American Royal ROE Show and Reserve Champion Female title at the Fort Worth Stock Show. He is also a maternal brother to the RJ Cattle owned, RF Elevate K108 that has burst onto the scene this past year with multiple high selling daughters.

We put full faith in this son of the trending, PCC Force Of Nature 122J to inject added phenotypic quality and maternal power into his progeny, without sacrificing any growth and performance of his calf crops. This impressive specimen has the look of quality that regardless of hide quality, stockmen from all production scenarios will find value in.

A big thank you to our partners Sand Creek Ranch - Greg & Jessie Peck on their belief in the program and AWR Trailblazer 355L ET.



RF MISS MAURA 3322 ET
2025 AIJCA Grand Champion Owned Heifer
Full Sister to AWR Trailblazer 355L ET



RF MISS MAURA 3322 ET
2024 AIJCA Grand Champion Owned Heifer
Full Sister to AWR Trailblazer 355L ET



RF MISS MAURA 3322 ET
2025 Cattlemen's Congress Grand Champion Open Charolais Heifer
Full Sister to AWR Trailblazer 355L ET

lot 1

AWR UDE *phyllis* 241M



1 **AWR UDE PHYLLIS 241M**
 AAA 21318504 • DOB 3/26/24 • TATTOO 241M • BREED ANGUS

COLLISON ALPHA 028
BLC/MLA OMEGA 2258
 MLA PROVEN QUEEN 2058
 SCC FIRST-N-GOAL GAF 114
FCF PHYLLIS 532
 SCC PHYLLIS 051

CE	BW	WW	YW	MILK	CEM	REA	MARB	SM	\$B	\$C
-7	5.2	62	101	18	-1	0.73	0.09	7	120	163

AI BRED 6/6/25 TO BEAR MTN NORTH STAR (AAA: 20474708)
 PE 6/30/25-8/9/25 TO THOMAS RANCH LOW BIRTH WEIGHT ANGUS BULLS
 EST. DUE EARLY MAY



The pedigrees supporting the Angus offering are as powerful as you will find anywhere in the nation. We begin with a collection of daughters from the legendary FCF Phyllis 532, a female that has cemented her position as the leading descendant of the elite SCC Phyllis 051 cow family and has solidified her spot as one of the great producing Angus females in the business. She has proven herself as one of the most well rounded and consistent generators of high quality, and this has been proven even more impressively by her ability to click across breed lines. We are excited to present this pair of flush sisters that stem from some of the most exciting and admirable pedigrees in the breed.



BLC/MLA OMEGA 2258
 \$95,000 Sire of Lots 1 & 2

lot 2

AWR UDE *phyllis* 300M



2 AWR UDE PHYLLIS 300M

AAA 21318509 • DOB 4/7/24 • TATTOO 300M • BREED ANGUS

COLLISON ALPHA 028
BLC/MLA OMEGA 2258
 MLA PROVEN QUEEN 2058
 SCC FIRST-N-GOAL GAF 114
FCF PHYLLIS 532
 SCC PHYLLIS 051

CE	BW	WW	YW	MILK	CEM	REA	MARB	\$M	\$B	\$C
-7	5.2	62	101	18	-1	0.73	0.09	7	120	163

AI BRED 6/6/25 TO BEAR MTN NORTH STAR (AAA: 20474708)
 PE 6/30/25-8/9/25 TO THOMAS RANCH LOW BIRTH WEIGHT ANGUS BULLS
 EST. DUE EARLY APRIL

This pair of 532 daughters that initiate the offering are sired by the \$190,000 valued Embryos on Snow AI sire, BLC/MLA Omega 2258. The dam of BLC/MLA Omega 2258 is a Silveiras Style 9303 sired daughter of the iconic FCF Proven Queen 419, arguably one of the best Angus females shown in the last decade! His pedigree only adds more maternal power to the equation, helping to stack multiple champions and high revenue generators up into one potent pedigree! These two females are consistently cowy and maternal in their build, they are long spined and extremely chiseled about her head and neck. We think they have an extreme wow factor and love the way that they tie all their big and fancy features together; it begins with the eccentric ear set and goes all the way down to their big and square paws.



UDE PHYLLIS 3024
 \$73,000 Maternal Sister to Lot 2



UDE PHYLLIS 4006
 \$60,000 Maternal Sister to Lots 1-9

phyllis
169M



lot 3

3

AWR UDE PHYLLIS 169M

AAA 21318494 • DOB 3/7/24 • TATTOO 169M • BREED ANGUS

PVF INSIGHT 0129
BNWZ DIGNITY 8017
 CCC SARA'S DREAM 5116
 SCC FIRST-N-GOAL GAF 114
FCF PHYLLIS 532
 SCC PHYLLIS 051

CE	BW	WW	YW	MILK	CEM	REA	MARB	\$M	\$B	\$C
-4	4.8	61	102	20	2	0.62	0.13	27	129	194

AI BRED 6/6/25 TO BEAR MTN NORTH STAR (AAA: 20474708)
 PE 6/30/25-8/9/25 TO THOMAS RANCH LOW BIRTH WEIGHT ANGUS BULLS
 LIKELY SAFE AI. EST. DUE MID MARCH

4

AWR UDE PHYLLIS 101M

AAA 21318477 • DOB 2/14/24 • TATTOO 101M • BREED ANGUS

PVF INSIGHT 0129
BNWZ DIGNITY 8017
 CCC SARA'S DREAM 5116
 SCC FIRST-N-GOAL GAF 114
FCF PHYLLIS 532
 SCC PHYLLIS 051

CE	BW	WW	YW	MILK	CEM	REA	MARB	\$M	\$B	\$C
-4	4.8	61	102	20	2	0.62	0.13	27	129	194

AI BRED 6/6/25 TO BEAR MTN NORTH STAR (AAA: 20474708)
 PE 6/30/25-8/9/25 TO THOMAS RANCH LOW BIRTH WEIGHT ANGUS BULLS
 EST. DUE EARLY APRIL

LOTS 3 & 4

Here we present two FULL SISTERS to the most exciting bull in the business, the \$280,000 sale feature from the 18th Annual Embryos on Snow, UDE New Heights 62/87. After his unprecedented rookie year, demand for his influence has become rampant, with conventional semen commanding close to \$1,000, and sexed semen over \$2,000 a unit. Yet he doesn't sit alone, as this mating has created a long resume to include the \$300,000-second-high selling female in 2024 and the \$135,000-second-high selling female from the 2023 "The Advantage" Production Sale. The BNWZ Dignity 8017 x FCF Phyllis 532 mating is as automatic as they come, so do not question an investment here as there is no limit to the genetic value of these two prospects. FCF Phyllis 532 has quickly become one of the highest dollar generating cow families for the Udell program. The momentum that has been built in the rookie season of UDE New Heights 62/87 progeny is astounding, and certainly makes these two, prime pieces of real estate.



UDE NEW HEIGHTS 62/87
 \$280,000 Full Brother to Lots 3 & 4
 Maternal Brother to Lots 1-9



UDE QUEEN RUTH 5036
 \$500,000 Daughter of Full Brother to Lots 3 & 4



UDE PHYLLIS 4019
 Full Sister to Lots 3 & 4
 Maternal Sister to Lots 1-9



UDE PHYLLIS 3001
 Full Sister to Lot 3 & 4
 Maternal Sister to Lots 1-9

lot 5

AWR UDE *phyllis* 124M

5

AWR UDE PHYLLIS 124M

AAA 21318479 • DOB 2/26/24 • TATTOO 124M • BREED ANGUS

GAMBLES HOT ROD

SILVEIRAS STYLE 9303

SILVEIRAS ELBA 2520

SCC FIRST-N-GOAL GAF 114

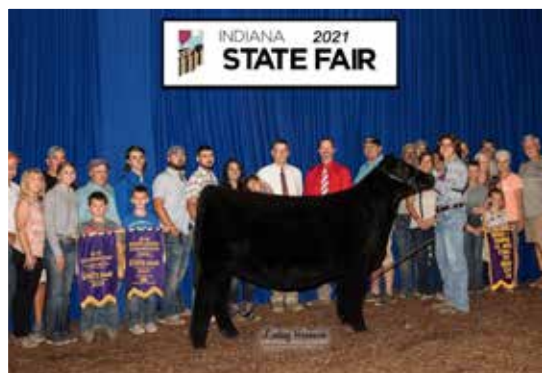
FCF PHYLLIS 532

SCC PHYLLIS 051

CE	BW	WW	YW	MILK	CEM	REA	MARB	\$M	\$B	\$C
-2	4.6	51	85	18	4	0.40	0.30	8	111	152

AI BRED 6/8/25 TO BEAR MTN NORTH STAR (AAA: 20474708)
 PE 6/30/25-8/9/25 TO THOMAS RANCH LOW BIRTH WEIGHT ANGUS BULLS
 EST. DUE LATE APRIL

The pedigree of AWR UDE Phyllis 124M combines some of the best to ever exist with a AAA registration number, both Silveiras Style 9303 and FCF Phyllis 532 will go down in history as individuals of significant influence, as both have impacted the face of the Angus business as we see it today. It's no wonder that you will find such incredible phenotype with AWR UDE Phyllis 124M, as the list of maternal and paternal siblings she is accompanied by reads of the best to ever see the tanbark. If you are coming to Millsap to acquire a breeding piece that will aid ROI and program development, then your time will be well warranted by appraising this female.



UDE PHYLLIS 0223

Maternal Sister to Lots 1-9



LOTS 6 & 7

The mating of PVF Blacklist 7077 and FCF Phyllis 532 has been one of the best yet. These two females are full siblings to Josie Phillips, \$140,000, B C R Phyllis 092J that was the crowned the 2022 NJAS Grand Champion Owned Female, along with the 2023 FWSS ROV Grand Champion Angus Heifer. She was praised for her ultimate level of balance and completeness, and the elite look of generating potential she was blessed with. We think this pair of females mimic her closely, as they come with an added degree of turn and shape, along with a fault free structural design, and look of longevity. The powers of 532 have been unlocked here, we think they present themselves with a first class look of generating potential.



6 **AWR UDE PHYLLIS 131M**
 AAA 21318481 • DOB 3/1/24 • TATTOO 131M • BREED ANGUS

PVF INSIGHT 0129
PVF BLACKLIST 7077
 PVF BLACKBIRD 3070
 SCC FIRST-N-GOAL GAF 114
FCF PHYLLIS 532
 SCC PHYLLIS 051

CE	BW	WW	YW	MILK	CEM	REA	MARB	\$M	\$B	\$C
-3	5.3	64	107	19	-1	0.91	0.21	30	142	214

AI BRED 6/6/25 TO BEAR MTN NORTH STAR (AAA: 20474708)
 PE 6/30/25-8/9/25 TO THOMAS RANCH LOW BIRTH WEIGHT ANGUS BULLS
 LIKELY SAFE AI. EST. DUE MID MARCH

7 **AWR UDE PHYLLIS 223M**
 AAA 21318501 • DOB 3/22/24 • TATTOO 223M • BREED ANGUS

PVF INSIGHT 0129
PVF BLACKLIST 7077
 PVF BLACKBIRD 3070
 SCC FIRST-N-GOAL GAF 114
FCF PHYLLIS 532
 SCC PHYLLIS 051

CE	BW	WW	YW	MILK	CEM	REA	MARB	\$M	\$B	\$C
-3	5.3	64	107	19	-1	0.91	0.21	30	142	214

AI BRED 6/10/25 TO BEAR MTN NORTH STAR (AAA: 20474708)
 PE 6/30/25-8/9/25 TO THOMAS RANCH LOW BIRTH WEIGHT ANGUS BULLS
 EST. DUE EARLY APRIL



B C R PHYLLIS 092J
 Full Sister to Lots 6 & 7, Maternal Sister to Lots 1-9



B C R PHYLLIS 092J
 Full Sister to Lots 6 & 7, Maternal Sister to Lots 1-9



8 AWR UDE PHYLLIS 272M

AAA 21335037 • DOB 4/2/24 • TATTOO 272M • BREED ANGUS

PVF BLACKLIST 7077
PVF DLX KING PIN 0058
 PVF LUCY 4189
 SCC FIRST-N-GOAL GAF 114
FCF PHYLLIS 532
 SCC PHYLLIS 051

CE	BW	WW	YW	MILK	CEM	REA	MARB	\$M	\$B	\$C
0	3.9	58	98	18	2	0.76	0.33	39	136	216

AI BRED 6/5/25 TO BEAR MTN NORTH STAR (AAA: 20474708)
 PE 6/30/25-8/9/25 TO THOMAS RANCH LOW BIRTH WEIGHT ANGUS BULLS
 EST. DUE EARLY APRIL

We present a fresh mating on FCF Phyllis 532 here with a pair of daughters of the trending PVF DLX King Pin 0058, his influences only add another degree of maternal excellence, introducing the iconic, "Lucy" cow family that has been a cornerstone for the PVF program. AWR UDE Phyllis 272M comes with a soft underline, balanced outline and bold pin set, she too struts with an unmatched level of eye appeal.



PVF DLX KING PIN 0058
Sire of Lots 8-10

9 AWR UDE PHYLLIS 275M

AAA 21335039 • DOB 4/3/24 • TATTOO 275M • BREED ANGUS

PVF BLACKLIST 7077
PVF DLX KING PIN 0058
 PVF LUCY 4189
 SCC FIRST-N-GOAL GAF 114
FCF PHYLLIS 532
 SCC PHYLLIS 051

CE	BW	WW	YW	MILK	CEM	REA	MARB	\$M	\$B	\$C
0	3.9	58	98	18	2	0.76	0.33	39	136	216

AI BRED 6/6/25 TO BEAR MTN NORTH STAR (AAA: 20474708)
 PE 6/30/25-8/9/25 TO THOMAS RANCH LOW BIRTH WEIGHT ANGUS BULLS
 EST. DUE LATE APRIL

They second of the PVF DLX King Pin 0058 daughters matches up with her sister in regards to body shape and stoutness, but perhaps comes with a more refined look about her front third and chest floor. Note that these sisters offer the most attractive EPD profile of the 532 daughters in regards to CE, BW and \$C indexes.



UDE PHYLLIS 9129
Dam of Lot 10

10 AWR UDE PHYLLIS 274M

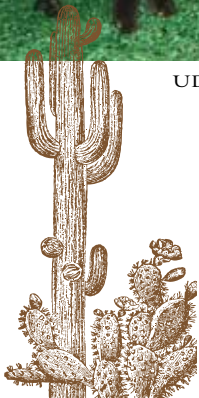
AAA 21335033 • DOB 4/3/24 • TATTOO 274M • BREED ANGUS

PVF BLACKLIST 7077
PVF DLX KING PIN 0058
 PVF LUCY 4189
 SILVEIRAS STYLE 9303
UDE PHYLLIS 9129
 FCF PHYLLIS 532

CE	BW	WW	YW	MILK	CEM	REA	MARB	\$M	\$B	\$C
4	3.0	54	95	20	6	0.64	0.25	30	118	183

AI BRED 6/7/25 TO BEAR MTN NORTH STAR (AAA: 20474708)
 PE 6/30/25-8/9/25 TO THOMAS RANCH LOW BIRTH WEIGHT ANGUS BULLS
 EST. DUE LATE APRIL

AWR UDE Phyllis 274M stems from the \$115,000 UDE Phyllis 9129 that was campaigned by Kinnick Paulsen, to countless victories that include being named a Division Champion at the 2020 FWSS, Supreme Champion Heifer Heart of Iowa Blowout, and Supreme Champion Heifer at the Sneak-A-Peak Preview. She is certainly an up-and-coming frontline donor for the UDE prefix, and this daughter lives up to the hype!



UDE PHYLLIS 9129
Dam of Lot 10

lots *eleven* THROUGH 15

CFCC BLACK JACK 001
KR CASINO 6243
 MALSONS SAVANNAH 27Y
 PVF INSIGHT 0129
KDJ QUEEN RUTH 502
 K D J QUEEN RUTH



The mating that supports the next five females could quite possibly be the most valuable, consistent and highest dollar generating combination in modern Angus history. The resume that 502 has assembled is unlike another in the nation, with a high sellers list that consists of daughters at \$500,000, two at \$135,000, \$110,000, \$90,000, \$87,000, \$80,000, \$67,000, \$52,000, \$50,000, \$42,000, \$40,000 \$37,000, \$33,000, \$27,000, \$25,500, \$22,000, \$20,000, \$19,000, \$18,500, \$18,000, \$17,000, \$16,500, and \$13,000. Many of the forementioned females would be full sisters this these five daughters of KDJ Queen Ruth 502 that will be marketed on November 23rd. Notable full sisters include UDE Queen Ruth 0204 who went on to completely dominate the show circuit from coast to coast, her most notable wins include being the 2021 American Royal ROV Grand Champion Angus Heifer, both the 2021 NAILE ROV and Junior Show Grand Champion Angus Heifer and the 2022 Cattleman's Congress ROV Reserve Champion Angus Heifer. In production she is setting records again, being the mother of the \$500,000 highlight at the 2025 Udell "The Advantage" Female Sale and the trending, Rose Apex 3204. Other full sisters include Sara Sullivan's Third Overall Owned Champion Female, UDE Queen Ruth 2003 from the 2023 National Junior Angus Show, the Lashmett & Weis owned, UDE Queen Ruth 9088, and the freshest source of excellence for Udell Cattle in UDE Queen Ruth 2001 that was campaigned by Langford and started off her production career with a bang this past October. An investment in any, or all of these KR Casino 6243 x KDJ Queen Ruth 502 daughters would be a wise move towards placing your Angus seed stock, and show heifer generating program on a skyward trajectory.



11 **AWR UDE QUEEN RUTH 146M**

AAA 21318483 • DOB 3/2/24 • TATTOO 146M • BREED ANGUS

CE	BW	WW	YW	MILK	CEM	REA	MARB	\$M	\$B	\$C
4	2.6	53	97	28	4	0.32	0.19	38	110	181

AI BRED 6/6/25 TO BEAR MTN NORTH STAR (AAA: 20474708)
 PE 6/30/25-8/9/25 TO THOMAS RANCH LOW BIRTH WEIGHT ANGUS BULLS
 EST. DUE LATE APRIL



12 **AWR UDE QUEEN RUTH 128M**

AAA 21318480 • DOB 2/28/24 • TATTOO 128M • BREED ANGUS

CE	BW	WW	YW	MILK	CEM	REA	MARB	\$M	\$B	\$C
4	2.6	53	97	28	4	0.32	0.19	38	110	181

AI BRED 6/7/25 TO BEAR MTN NORTH STAR (AAA: 20474708)
 PE 6/30/25-8/9/25 TO THOMAS RANCH LOW BIRTH WEIGHT ANGUS BULLS
 EST. DUE MID APRIL



AWR UDE QUEEN RUTH 282M



13 AWR UDE QUEEN RUTH 282M

AAA 21318506 • DOB 4/5/24 • TATTOO 282M • BREED ANGUS

CE	BW	WW	YW	MILK	CEM	REA	MARB	\$M	\$B	\$C
4	2.6	53	97	28	4	0.32	0.19	38	110	181

PE 6/30/25-8/9/25 TO THOMAS RANCH LOW BIRTH WEIGHT ANGUS BULLS
EST. DUE LATE MARCH

14 AWR UDE QUEEN RUTH 149M

AAA 21318485 • DOB 3/3/24 • TATTOO 149M • BREED ANGUS

CE	BW	WW	YW	MILK	CEM	REA	MARB	\$M	\$B	\$C
4	2.6	53	97	28	4	0.32	0.19	38	110	181

AI BRED 6/8/25 TO BEAR MTN NORTH STAR (AAA: 20474708)
PE 6/30/25-8/9/25 TO THOMAS RANCH LOW BIRTH WEIGHT ANGUS BULLS
EST. DUE EARLY APRIL

15 AWR UDE QUEEN RUTH 72M

AAA 21318473 • DOB 2/1/24 • TATTOO 72M • BREED ANGUS

CE	BW	WW	YW	MILK	CEM	REA	MARB	\$M	\$B	\$C
4	2.6	53	97	28	4	0.32	0.19	38	110	181

AI BRED 6/5/25 TO BEAR MTN NORTH STAR (AAA: 20474708)
PE 6/30/25-8/9/25 TO THOMAS RANCH LOW BIRTH WEIGHT ANGUS BULLS
LIKELY SAFE AI. EST. DUE MID MARCH



UDE QUEEN RUTH 2001
Full Sister to Lots 11-15



UDE QUEEN RUTH 2157
Full Sister to Lots 11-15



UDE QUEEN RUTH 0204
Full Sister to Lots 11-15



UDE QUEEN RUTH 2003
Full Sister to Lots 11-15



UDE QUEEN RUTH 109E
Maternal Sister to Lots 11-15

LOTS 16 & 17

The high-powered cow family's just keep coming here, as you find a pair of full sisters that stem from the powerful EXAR Blue Chip 1877B x SLL Ellie 2201 combination that has been generating high end show heifers, and major league donor dams over the past 5 plus years. Full sisters to this duo include UDE Ellie 9230, Sara Sullivan's 2020 NJAS Grand Champion Owned Heifer, that has now become the flagship Angus female for the Sullivan Farms program, with multiple \$200,000+ daughters, including their high selling UDE New Heights 62/87 daughter that sold this past fall for \$201,500. Additionally the Sullivan firm purchased another full sister at \$150,000 in UDE Ellie 1259, and a maternal sister, UDE Ellie 153E by Colburn Primo 5153 was campaigned by Chesney Steenhoek to the Grand Champion Angus Heifer banner in the Junior Show at the 2018 NAILE.



PEDIGREE FOR LOTS 16 & 17

16	AWR UDE ELLIE 2M
AAA 21318464 • DOB 1/1/24 • TATTOO 2M • BREED ANGUS	

DAMERON FIRST CLASS
EXAR BLUE CHIP 1877B
 GREENS PRINCESS 1012
 PLAINVIEW LUTTON E102
SLL ELLIE 2201
 O G L ELLIE 634-446

CE	BW	WW	YW	MILK	CEM	REA	MARB	\$M	\$B	\$C
4	2.4	48	73	6	10	0.05	0.48	8	118	161

AI BRED 6/6/25 TO BEAR MTN NORTH STAR (AAA: 20474708)
 PE 6/30/25-8/9/25 TO THOMAS RANCH LOW BIRTH WEIGHT ANGUS BULLS
 EST. DUE MID APRIL

17	AWR UDE ELLIE 8M
AAA 21318465 • DOB 1/5/24 • TATTOO 8M • BREED ANGUS	

CE	BW	WW	YW	MILK	CEM	REA	MARB	\$M	\$B	\$C
4	2.4	48	73	6	10	0.05	0.48	8	118	161

AI BRED 6/5/25 TO BEAR MTN NORTH STAR (AAA: 20474708)
 PE 6/30/25-8/9/25 TO THOMAS RANCH LOW BIRTH WEIGHT ANGUS BULLS
 EST. DUE MID APRIL

UDE ELLIE 9230
Full Sister to Lots 16 & 17



UDE ELLIE 153E
Maternal Sister to Lots 16-18



UDE ELLIE 1259
\$150,000 Full Sister to Lots 16 & 17





AWR UDE

ellie
161M

lot 18

18 AWR UDE ELLIE 161M
AAA 21318489 • DOB 3/5/24 • TATTOO 161M • BREED ANGUS

PVF INSIGHT 0129
PVF BLACKLIST 7077
PVF BLACKBIRD 3070
PLAINVIEW LUTTON E102
SLL ELLIE 2201
O G L ELLIE 634-446

CE	BW	WW	YW	MILK	CEM	REA	MARB	\$M	\$B	\$C
7	1.9	47	76	9	6	0.61	0.27	25	123	185

AI BRED 6/6/25 TO BEAR MTN NORTH STAR (AAA: 20474708)
PE 6/30/25-8/9/25 TO THOMAS RANCH LOW BIRTH WEIGHT ANGUS BULLS
LIKELY SAFE AI. EST. DUE MID MARCH

Here you will find a fresh mating on the immortal SLL Ellie 2201 with the maternal king, PVF Blacklist 7077. We admire the cow power look and balance that AWR UDE Ellie 161M comes with, she looks to be the kind that is going to make an incredible matron once she hits the production stage of her career. She is long and eloquent in her build yet still wows you with her density and volume of body, being deep in her underline and round in her upper ribcage.

19 AWR UDE ELLIE 4219
AAA PENDING • DOB 4/1/24 • TATTOO 4219M • BREED ANGUS

PVF INSIGHT 0129
PVF BLACKLIST 7077
PVF BLACKBIRD 3070
EXAR BLUE CHIP 1877B
UDE ELLIE 9197
SLL ELLIE 2201

CE	BW	WW	YW	MILK	CEM	REA	MARB	\$M	\$B	\$C
8	1.4	46	73	8	8	0.64	0.32	27	112	165

AI BRED 6/6/25 TO HEIKEN IMPULSE (AAA: 20010364)
PE 6/30/25-8/9/25 TO THOMAS RANCH LOW BIRTH WEIGHT ANGUS BULLS
EST. DUE LATE MARCH

The dam of Lot 19, 9197, is a flush sister to the breed leading 9230. She was competitively campaigned by KayLee Langford during the 2020-2021 show season. She was the 2019 KS Beef Expo Reserve Supreme Champion Junior Breeding Heifer, 2020 KY Beef Expo Supreme Champion Junior Breeding Heifer, and a 2020 NWSS Division Champion. Yet the accolades have kept coming now that she is in production, being the dam of UDE Ellie 3013, 2024 All-Iowa Show Down Reserve Supreme Champion Breeding Heifer for Claire Nibe.



UDE ELLIE 5006
Full Sister to Lot 18



UDE ELLIE 3013
Maternal Sister to Lot 19



UDE ELLIE 9197
Dam of Lot 19 & Full Sister to Lots 16 & 17

lot 20

AWR UDE *saras dream* 202M



20 AWR UDE SARAS DREAM 202M

AAA 21318498 • DOB 3/15/24 • TATTOO 202M • BREED ANGUS

DAMERON FIRST CLASS
 EXAR BLUE CHIP 1877B
 GREENS PRINCESS 1012
 SILVEIRAS STYLE 9303
 SILVEIRAS SARAS DREAM 2335
 EXG SARAS DREAM S609 R3

CE	BW	WW	YW	MILK	CEM	REA	MARB	SM	SB	SC
-9	6.2	64	105	14	1	0.40	0.32	-2	132	169

PE 6/30/25-8/9/25 TO THOMAS RANCH LOW BIRTH WEIGHT ANGUS BULLS
 EST. DUE MID APRIL

Those looking to acquire daughters of the most recognizable and potent females in the Angus breed will not be disappointed once they make the trip to Millsap, and look into the pedigrees of the offering. Here we have a rare offering from the now deceased, Silveiras Saras Dream 2335, a female that still holds claim to records in the business. She is the dam of the memorable \$600,000 UDE Saras Dream 1086 that had the industry talking as soon as the gavel dropped. While 1086 had some memorable days on the tanbark it's the resume she is building in production that she will be remembered by. Her 2024 born daughter, UDE Saras Dream 4010 was purchased for \$400,000 by Veale Ranches, and was selected as the 2025 NJAS Grand Champion Owned Female for Kaylee Langford, what a start to her production career! This is a cow family that is in very short supply and heavy demand, so taking advantage of every opportunity to acquire a piece of this legacy is highly advised.



UDE SARAS DREAM 1086
 \$600,000 Full Sister to Lot 20



UDE SARAS DREAM 4010
 \$400,000 Daughter of Full Sister to Lot 20

lot 21

AWR UDE *princess* 4035



21

AWR UDE PRINCESS 4035

AAA 21029241 • DOB 5/15/24 • TATTOO 4035 • BREED ANGUS

PVF INSIGHT 0129

C&C INTUITION 7104

C&C WINNIE 2048

S&R ROUNDTABLE J328

EXAR PRINCESS 1080

EXAR PRINCESS 5391

CE	BW	WW	YW	MILK	CEM	REA	MARB	\$M	\$B	\$C
9	2.1	70	116	19	10	0.61	0.43	23	144	210

AI BRED 6/5/25 TO HEIKEN IMPULSE (AAA: 20010364)
 PE 6/30/25-8/9/25 TO THOMAS RANCH LOW BIRTH WEIGHT ANGUS BULLS
 EST. DUE MID APRIL

A special offering here from the heart of the Express Ranches program, as the EXAR Princess 1080 donor is one of the freshest branches from their most potent and invaluable cow family, the Princess's. EXAR Princess 1080 was campaigned by Kynlee Dailey to championships across the nation, and then backed up the hype during her time in the Express Ranch donor pen, with multiple daughters featuring in "The Big Event". She sold again as a pair in the 2024 "The Big Event" for \$55,000 to Jones Show Cattle. If you trace back another generation you will find the legendary EXAR Princess 5391 female that garnered in excess of \$2.7 million during her time working for the Yukon based program. From a phenotype standpoint, we feel like AWR UDE Princess 4035 will be one that many gravitate towards when they come to the ranch, as she captivates an audience with her outlier look of quality and balance. Both genetics and phenotype align here with this high caliber, investment level female.



EXAR PRINCESS 1080
 Dam of Lot 21



EXAR PRINCESS 4767
 Maternal Sister to the Dam of Lot 21

lot 22

AWR UDE *keymura katy* 86M



22 AWR UDE KEYMURA KATY 86M

AAA 21318475 • DOB 2/7/24 • TATTOO 86M • BREED ANGUS

SMA WATCHOUT 482
 CONLEY EXPRESS 7211
 DPL SANDY 3040
 SLL DOMINANCE 349
 SLL KEYMURA KATY 5008 "5009"
 SLL KEYMURA KATY 3069

CE	BW	WW	YW	MILK	CEM	REA	MARB	SM	\$B	\$C
-9	5.1	63	101	17	-2	0.45	0.52	-6	134	168

AI BRED 6/6/25 TO HEIKEN IMPULSE (AAA: 20010364)
 PE 6/30/25-8/9/25 TO THOMAS RANCH LOW BIRTH WEIGHT ANGUS BULLS
 LIKELY SAFE AI. EST. DUE MID MARCH

A time tested, and championship gathering pedigree supports this high quality, donor prospect. A full sister to AWR UDE Keymura Katy 86M, UDE Keymura Katy 1054 was shown by the Hunt family of Texas during 2022-23. She was selected as the Reserve Calf Champion at the San Antonio Livestock Exposition Junior Breeding Heifer Show, along with being the Grand Champion Angus and Supreme Overall at the 2022 Texas Youth Expo. We love the added maternal quality and wedge shape that 86M is built with, she comes in a very feminine yet robust package, that reads with a unique combination of both power and poise. The SLL Keymura Katy 5008 "5009" female was a pivotal piece in creating the Udell Cattle Company Angus program because of the added real world beef characteristic and ultimate maternal quality that she offers.



UDE KEYMURA KATY 1054
 Full Sister to Lot 22



UDE KEYMURA KATY 1054
 Full Sister to Lot 22

lot 23

AWR UDE *Betty* 178M



23 AWR UDE BETTY 178M

AAA 21318495 • DOB 3/8/24 • TATTOO 178M • BREED ANGUS

KR CASINO 6243

RIVERSTONE VEGAS 49H

COLEMAN DIXIE ERICA 3372

S A V BRILLIANCE 8077

UDE BETTY 42D

SULL STOCKMAN 7294



RIVERSTONE VEGAS 49H
Sire of Lot 23

CE	BW	WW	YW	MILK	CEM	REA	MARB	\$M	\$B	\$C
-4	4.2	62	100	16	4	0.38	0.43	12	137	148

AI BRED 6/8/25 TO HEIKEN IMPULSE (AAA: 20010364)
PE 6/30/25-8/9/25 TO THOMAS RANCH LOW BIRTH WEIGHT ANGUS BULLS
EST. DUE LATE APRIL

We think it's very easy to read quality in this phenotypic standout of the offering. This direct daughter of Riverstone Vegas 49H comes with plenty of advantages, as she was blessed with an extra swoopy underline, long and extended front end and added hair quality. She looks to be the kind that offers value across the board in production, both from a purebred Angus and composite show heifer production standpoint. Reading back into her pedigree, many will be familiar with her maternal granddam, Sull Stockman 7294, a female that was a very prevalent member of the Sullivan Farms Angus donor program through the early 2010's. While this may date her some, her quality was timeless, and founded off a degree of quality that is demanded by stockmen in the real world.



SULL STOCKMAN 7294
Legendary Maternal Granddam of Lot 23

lot 24

AWR UDE *blackbird* 288M

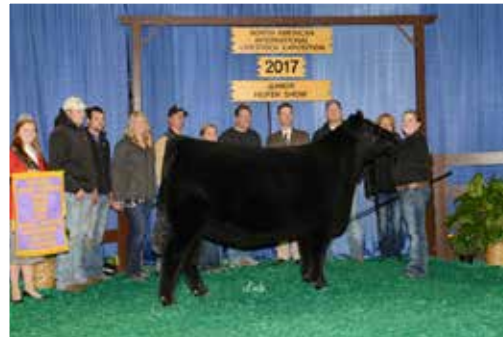


24 AWR UDE BLACKBIRD 288M

AAA 21318508 • DOB 4/6/24 • TATTOO 288M • BREED ANGUS

CFCC BLACK JACK 001
KR CASINO 6243
 MALSONS SAVANNAH 27Y
 EXAR BLUE CHIP 1877B
HOFFMAN H/G BLACKBIRD 620
 ALL PVF BLACKBIRD 645

CE	BW	WW	YW	MILK	CEM	REA	MARB	\$M	\$B	\$C
-1	4.9	61	105	21	3	0.46	0.29	23	126	187



HOFFMAN H/G BLACKBIRD 620
 Dam of Lot 24

PE 6/30/25-8/9/25 TO THOMAS RANCH LOW BIRTH WEIGHT ANGUS BULLS
 EST. DUE LATE MARCH

Angus Royalty sells again here! Hoffman H/G Blackbird 620 wrote her own chapter in the Angus history books as she produced the \$300,000 record selling heifer calf, UDE Blackbird 0153, that was selected by Mercedes Ferree of Indiana in "The Advantage" Production Sale in 2020. 620 was a dominate champion herself, and in production she has proven that you can remove the guesswork about her progeny's ability to win on the biggest of stages and go onto to out generate themselves once their time on the end of the lead comes to an end. This KR Casino 6243 daughter comes with an added degree of outlandish look about her front third, and certainly doesn't struggle to strike a pose with any opportunity she is granted.



UDE BLACKBIRD 2002
 \$55,000 Maternal Sister to Lot 24



AWR UDE
blackbird
166M

lot 25

25 AWR UDE BLACKBIRD 166M
AAA 21318492 • DOB 3/6/24 • TATTOO 166M • BREED ANGUS

PVF INSIGHT 0129
PVF BLACKLIST 7077
PVF BLACKBIRD 3070
S&R ROUNDTABLE J328
UDE BLACKBIRD 192H
HOFFMAN H/G BLACKBIRD 620

CE	BW	WW	YW	MILK	CEM	REA	MARB	\$M	\$B	\$C
4	2.6	53	97	28	4	0.32	0.19	38	110	181

AI BRED 6/5/25 TO HEIKEN IMPULSE (AAA: 20010364)
PE 6/30/25-8/9/25 TO THOMAS RANCH LOW BIRTH WEIGHT ANGUS BULLS
LIKELY SAFE AI. EST. DUE MID MARCH

A PVF Blacklist 7077 daughter that stems back to the legendary champion, Hoffman H/G Blackbird 620. 620 went on a rampant spree across the nation while being a show heifer for Maddy Udell, her championships include being named the 2016 Kansas Beef Expo Supreme Champion Female, 2016 Badger Kick-Off Reserve Supreme Champion Female, 2017 NWSS Early Spring Heifer Calf Champion, 2017 NJAS Grand Champion Owned Female, 2017 American Royal Grand Champion Junior Angus Female, and 2017 NAILE Reserve Grand Champion Junior Angus Female. This is a cow family that sings a story of ROI and showring dominance.

26 AWR UDE BLACKBIRD 62M
AAA 21318470 • DOB 1/30/24 • TATTOO 62M • BREED ANGUS

DAMERON FIRST CLASS
COLBURN PRIMO 5153
SILVEIRAS SARAS DREAM 1339
SCC SCH 24 KARAT 838
UDE BLACKBIRD 0153
HOFFMAN H/G BLACKBIRD 620

CE	BW	WW	YW	MILK	CEM	REA	MARB	\$M	\$B	\$C
0	4.6	63	101	16	1	0.28	0.09	2	94	124

AI BRED 6/6/25 TO BEAR MTN NORTH STAR (AAA: 20474708)
PE 6/30/25-8/9/25 TO THOMAS RANCH LOW BIRTH WEIGHT ANGUS BULLS
LIKELY SAFE AI. EST. DUE MID MARCH

Here you find a direct daughter of the \$300,000 phenom, UDE Blackbird 0153, that was campaigned to purple by the Ferree family. This Colburn Primo 5153 daughter comes with a large set of feet and legs, a cool look from the profile and an intrigue that gets the mind wondering about her potential once she enters production. She bred up to her AI and is expected to knock it out of the park on her first opportunity, with a calf due by the exciting BEAR MTN North Star.



UDE BLACKBIRD 0153
\$300,000 Maternal Sister to Lot 24 & Dam of Lot 26



UDE BLACKBIRD 0153
\$300,000 Maternal Sister to Lot 24 & Dam of Lot 26



UDE BLACKBIRD 0153
\$300,000 Maternal Sister to Lot 24 & Dam of Lot 26

LOT 27

The combination of Riverstone Vegas 49H and UDE Hannah 8051 continues the trend of phenotypic excellence you will find throughout this Angus offering. We appreciate the fault free design of this female, and think that she offers a genetic and phenotypic base that should appease the most stringent of stockmen. Yet her abilities in the breeding box are what might be the most exciting and will reveal her most impressive talents. She comes from a pedigree that leaves the playbook fairly wide open in terms of mating decisions.



LIKELY



27 AWR UDE HANNAH 155M
 AAA 21318487 • DOB 3/4/24 • TATTOO 155M • BREED ANGUS

KR CASINO 6243
RIVERSTONE VEGAS 49H
 COLEMAN DIXIE ERICA 3372
 PVF INSIGHT 0129
UDE HANNAH 8051
 WAM UDE HANNAH 810

CE	BW	WW	YW	MILK	CEM	REA	MARB	\$M	\$B	\$C
2	3.6	58	104	22	5	0.40	0.23	22	114	170

AI BRED 6/6/25 TO HEIKEN IMPULSE (AAA: 20010364)
 PE 6/30/25-8/9/25 TO THOMAS RANCH LOW BIRTH WEIGHT ANGUS BULLS
 LIKELY SAFE AI. EST. DUE MID MARCH

28 AWR UDE SANDYS TRADITION 40M
 AAA 21318467 • DOB 1/20/24 • TATTOO 40M • BREED ANGUS

PVF INSIGHT 0129
BNWZ DIGNITY 8017
 CCC SARA'S DREAM 5116
 SCC TRADITION OF 24
SCC SCH SANDYS TRADITION 928
 BCII SANDY 0215

CE	BW	WW	YW	MILK	CEM	REA	MARB	\$M	\$B	\$C
-1	4.2	59	100	21	-4	0.63	0.09	15	122	173

AI BRED 6/6/25 TO HEIKEN IMPULSE (AAA: 20010364)
 PE 6/30/25-8/9/25 TO THOMAS RANCH LOW BIRTH WEIGHT ANGUS BULLS
 EST. DUE LATE APRIL



LOT 28

AWR UDE Sandys Tradition 40M is a daughter of the widely popular BNWZ Dignity 8017 that is supported by SCC SCH Sandys Tradition 928, a daughter of the 2017 NWSS Reserve Grand Champion Junior Angus Heifer, BCII Sandy 0215. We love the added symmetry and balance that this female offers from the side, she is incredible in the shape and depth of her mid-rib and underline. The "Sandy" tribe has to be one of the most trendy and progressive linages available to Angus breeders, and we think its presence here helps to foreshadow the probabilities of this female transitioning into a lucrative donor!



lot 29

AWR UDE *sandy* 65M



29

AWR UDE SANDY 65M

AAA 21318471 • DOB 1/31/24 • TATTOO 65M • BREED ANGUS

KR CASINO 6243

RIVERSTONE VEGAS 49H

COLEMAN DIXIE ERICA 3372

SILVEIRAS STYLE 9303

UDE SANDY 1H

CONLEY SANDY 5104

CE	BW	WW	YW	MILK	CEM	REA	MARB	\$M	\$B	\$C
4	2.6	60	105	25	7	0.58	0.27	33	114	181

AI BRED 6/7/25 TO HEIKEN IMPULSE (AAA: 20010364)
 PE 6/30/25-8/9/25 TO THOMAS RANCH LOW BIRTH WEIGHT ANGUS BULLS
 EST. DUE EARLY MAY

We begin the collection of UDE Sandy 1H daughters with a standout of the entire offering in AWR UDE Sandy 65M. 1H the result of an embryo purchase made by Udell Cattle Company in the 2016-2017 ROV Show Heifer of the Year, Conley Sandy 5104! There is no denying the influence that 5104 has had on the Conley Cattle and Lookout Ridge Farm programs, as she has generated well over the \$1 million mark in progeny sales. 5104 is the dam of Conley DS Clear Cut 0510, the 2021-2022 ROV Show Bull of the Year, a sire that continues to cause a stir with Angus breeders across the nation. 5104 has also produced countless other show winners and high sellers for her respective programs, and with the looks of the generating potential that has been exposed in the short term by UDE Sandy 1H, she is bound to add another feather in the cap of the 5104 dynasty. The combination of 1H with Riverstone Vegas 49H has delivered the goods here! An extra massive, boldly sprung and square hipped female that has an extra degree of bone circumference and foot size, along with the added hair quality and neck extension to propel her to the top

of many peoples lists. As the industry trends back towards needing more substance in their show heifers we think this one suits the bill very well.



CONLEY SANDY 5104
 Maternal Granddam of Lots 29-33



CONLEY DS CLEAR CUT 0510
 Maternal Brother to Dam of Lots 29-33



lot 30

AWR UDE *sandy* 152M



PEDIGREE FOR LOTS 30 & 31

30	AWR UDE SANDY 152M
AAA 21318486 • DOB 3/3/24 • TATTOO 152M • BREED ANGUS	

CFCC BLACK JACK 001
KR CASINO 6243
 MALSONS SAVANNAH 27Y
 SILVEIRAS STYLE 9303
UDE SANDY 1H
 CONLEY SANDY 5104

CE	BW	WW	YW	MILK	CEM	REA	MARB	\$M	\$B	\$C
2	3.6	58	104	22	5	0.40	0.23	22	114	170

AI BRED 6/7/25 TO HEIKEN IMPULSE (AAA: 20010364)
 PE 6/30/25-8/9/25 TO THOMAS RANCH LOW BIRTH WEIGHT ANGUS BULLS
 EST. DUE EARLY APRIL

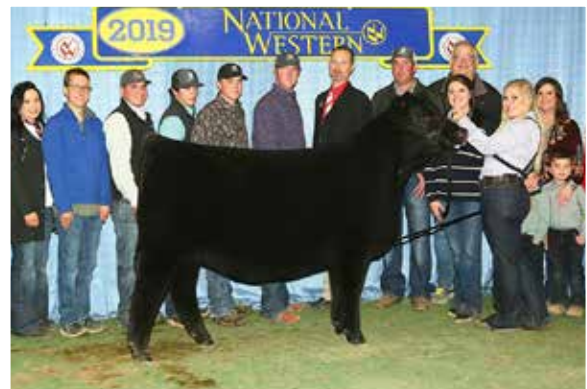
LOTS 30 & 31

With the likes of KR Casino 6243 and UDE Sandy 1H meeting you align some of the most potent and genetically consistent cow families known to the modern Angus breed. Here we have a pair of sisters that combine both cow power and phenotypic quality, that each form a dynamic package that have generating potential written all over them! The “Sandy” name has become one of the most prevalent sources of elite designed Angus seed stock in recent years, and you can trust that these two females have the embedded genetic excellence to generate offspring that garner attention, and in turn, impressive price tags.

31	AWR UDE SANDY 221M
AAA 21318500 • DOB 3/22/24 • TATTOO 221M • BREED ANGUS	

CE	BW	WW	YW	MILK	CEM	REA	MARB	\$M	\$B	\$C
2	3.6	58	104	22	5	0.40	0.23	22	114	170

AI BRED 6/6/25 TO HEIKEN IMPULSE (AAA: 20010364)
 PE 6/30/25-8/9/25 TO THOMAS RANCH LOW BIRTH WEIGHT ANGUS BULLS
 EST. DUE LATE MARCH



CONLEY SANDY 8510
 Maternal Sister to Dam of Lots 29-33

32 AWR UDE SANDY 237M

AAA 21318503 • DOB 3/25/24 • TATTOO 237M • BREED ANGUS

EXG RS FIRST RATE S903 R3
DAMERON FIRST CLASS
 DAMERON NORTHERN MISS 3114
 SILVEIRAS STYLE 9303
UDE SANDY 1H
 CONLEY SANDY 5104

CE	BW	WW	YW	MILK	CEM	REA	MARB	\$M	\$B	\$C
3	3.4	60	99	15	6	0.45	0.24	-1	116	150

AI BRED 6/6/25 TO HEIKEN IMPULSE (AAA: 20010364)
 PE 6/30/25-8/9/25 TO THOMAS RANCH LOW BIRTH WEIGHT ANGUS BULLS
 EST. DUE EARLY APRIL

AWR UDE Sandy 237M offers an opportunity that we can promise you will not find on every street corner. This female is supported by a pedigree that aligns the stars, and truly would be hard to mimic just from a genetic availability standpoint. Tying together the likes of Dameron First Class, Silveiras Elba 2520, and Conley Sandy 5104, she sports a pedigree that features a who's who list of Angus greats. The genetic power embedded here is immense, and we believe her ability to strike gold with various matings is probable.



CONLEY DS SANDY 3714
Maternal Sister to Dam of Lots 29-33

33 AWR UDE SANDY 371M

AAA 21335031 • DOB 4/29/24 • TATTOO 371M • BREED ANGUS

PVF BLACKLIST 7077
PVF DLX KING PIN 0058
 PVF LUCY 4189
 SILVEIRAS STYLE 9303
UDE SANDY 1H
 CONLEY SANDY 5104

CE	BW	WW	YW	MILK	CEM	REA	MARB	\$M	\$B	\$C
7	1.8	54	96	16	7	0.68	0.30	24	124	185

AI BRED 6/5/25 TO HEIKEN IMPULSE (AAA: 20010364)
 PE 6/30/25-8/9/25 TO THOMAS RANCH LOW BIRTH WEIGHT ANGUS BULLS
 LIKELY SAFE AI. EST. DUE MID MARCH



UDE SANDY 4029
Maternal Sister to Lots 29-33

The mating of PVF DLX King Pin 0058 and UDE Sandy 1H brings together some of the most powerful genetic sources in the Angus registry. With the powers of both the "Sandy" and "Lucy" cow families embedded, expectations should be high. This is a female that will form the building blocks for a productive and revenue generating cow family for her new owners. She too proves her potential for productivity with her early breed up, and march due pregnancy.

34 AWR UDE 41M

AAA PENDING • DOB 4/8/24 • TATTOO 41M • BREED ANGUS

PVF INSIGHT 0129
BNWZ DIGNITY 8017
 CCC SARA'S DREAM 5116
 ANGUS
193G
 ANGUS

CE	BW	WW	YW	MILK	CEM	REA	MARB	\$M	\$B	\$C
1	3.3	64	109	19	4	0.64	0.16	28	138	207

AI BRED 6/10/25 TO HEIKEN IMPULSE (AAA: 20010364)
 PE 6/30/25-8/9/25 TO THOMAS RANCH LOW BIRTH WEIGHT ANGUS BULLS
 EST. DUE EARLY APRIL



BNWZ DIGNITY 8017
Sire of Lot 34

The dominance of BNWZ Dignity 8017 is long from over, he has become a steadfast source of some the most genetically and phenotypically elite cattle in existence, and this is not only designated to cattle with AAA registration numbers, but remains valid across breed lines. However, knowing that she stems from the powers of one of the most memorable NJAS champions of the past decade, it comes as no surprise, as many were left in awe by the true cow power and dominance that CCC Sara's Dream 5116 asserted during her time on the tanbark. What is most exciting is that his daughters are exceeding expectations in production, jump on board with the fast pace of the Angus show heifer business here!

LOTS 35 & 36

The mystic that revolves around KDP Miss Hoya Hayleigh is understandable once you know the dominating story that surrounds the champion, and proven generator of champions. She herself was a triple crown winning National Champion Simmental female that was a force to be reckoned with, every time she got onto the shavings. What's most incredible though is the way that she has gone on to closely mimic these same accolades with her generating capabilities. There is no question that Miss Hoya Hayleigh is unique in her type and kind, as she has matured into a truly special Purebred Simmental breeding piece. The list of her wins is impressive, and includes being the Grand Champion Purebred Simmental and Reserve Supreme Champion Overall at the 2019 Kansas Beef Expo, the Grand Champion Open Purebred Simmental Female at the 2020 American Royal and the Grand Champion Purebred Simmental at the North American. She completed the triple crown with her win at the Inaugural Cattleman's Congress in Oklahoma City.



35 **AWR UDE HAYLEIGH 6M**
 ASA 4552908 • DOB 1/3/24 • TATTOO 6M • BREED PB SM

SVF STEEL FORCE S701
MR HOC BROKER
 JM BF H25
 LLSF PAYS TO BELIEVE ZU194
KDP MISS HOYA HAYLEIGH
 K-LER/RC MISS HOYA SAXA

CE	BW	WW	YW	MCE	MILK	MARB	REA	API	TI
9.6	2.8	74.1	105.2	5.5	17.8	-0.06	0.72	105.9	69.1

AI BRED 6/5/25 TO HEIKEN IMPULSE (AAA: 20010364)
 PE 6/18/25 - 8/15/25 TO SJF SMJ PAYROLL (ASA: 3992818)
 LIKELY SAFE AI. EST. DUE MID MARCH

36 **AWR UDE HAYLEIGH 24M**
 ASA 4552909 • DOB 1/15/24 • TATTOO 24M • BREED PB SM

SVF STEEL FORCE S701
MR HOC BROKER
 JM BF H25
 LLSF PAYS TO BELIEVE ZU194
KDP MISS HOYA HAYLEIGH
 K-LER/RC MISS HOYA SAXA

CE	BW	WW	YW	MCE	MILK	MARB	REA	API	TI
9.6	2.8	74.1	105.2	5.5	17.8	-0.06	0.72	105.9	69.1

AI BRED 6/6/25 TO HEIKEN IMPULSE (AAA: 20010364)
 PE 6/18/25 - 8/15/25 TO SJF SMJ PAYROLL (ASA: 3992818)
 LIKELY SAFE AI. EST. DUE MID MARCH



KDP MISS HOYA HAYLEIGH
 Dam of Lots 35-41



KDP MISS HOYA HAYLEIGH
 Dam of Lots 35-41

lot 37

AWR UDE *hayleigh* 27M



PEDIGREE FOR LOTS 37 & 38

37 AWR UDE HAYLEIGH 27M
 ASA 4552910 • DOB 1/15/24 • TATTOO 27M • BREED PB SM

HPF/HILL UPRISING C104
 SO REMEDY 7F
 B&K CREAM SODA 8D
 LLSF PAYS TO BELIEVE ZU194
 KDP MISS HOYA HAYLEIGH
 K-LER/RC MISS HOYA SAXA

CE	BW	WW	YW	MCE	MILK	MARB	REA	API	TI
14.0	1.4	75.5	113.7	7.5	19.6	-0.04	0.82	116.8	73.6

AI BRED 6/6/25 TO HEIKEN IMPULSE (AAA: 20010364)
 PE 6/18/25 - 8/15/25 TO SJF SMJ PAYROLL (ASA: 3992818)
 EST. DUE EARLY APRIL

38 AWR UDE HAYLEIGH 108M
 ASA 4552914 • DOB 2/23/24 • TATTOO 108M • BREED PB SM

CE	BW	WW	YW	MCE	MILK	MARB	REA	API	TI
14.0	1.4	75.5	113.7	7.5	19.6	-0.04	0.82	116.8	73.6

AI BRED 6/6/25 TO HEIKEN IMPULSE (AAA: 20010364)
 PE 6/18/25 - 8/15/25 TO SJF SMJ PAYROLL (ASA: 3992818)
 EST. DUE EARLY APRIL

Across the page you can read the impressive repertoire of wins that KDP Miss Hoya Hayleigh claimed, but here we will share the incredible run that her daughter and full sister to lots 37 & 38, UDE Hayleigh 5K went on for Brady Edge. UDE Hayleigh 5K seemed to be about untouchable during her 2023-24 run on the tanbark, with wins that include being the 2023 FWSS Grand Champion Purebred Simmental Heifer, 2023 AJSA National Classic 5th Overall Purebred Simmental Heifer, 2023 IA State Fair Grand Champion Purebred Simmental Heifer, 2023 American Royal Grand Champion Purebred Simmental Heifer, 2023 NAILE Grand Champion Purebred Simmental Heifer, 2024 NWSS Reserve Grand Champion Simmental Female and was finally crowned the 2023-24 PTP Purebred Simmental Show Heifer of the Year. Needless to say, investment here can be accompanied with serious excitement about the future of your Simmental program, as the pedigree that supports these two females is littered with the best to have ever done it.



UDE HAYLEIGH 5K
 Full Sister to Lots 37 & 38



UDE HAYLEIGH 49N
 Full Sister to Lots 37 & 38



AWR UDE

hayleigh
103M

lot 40

39 AWR UDE HAYLEIGH 175M
ASA 4552915 • DOB 3/8/24 • TATTOO 175M • BREED PB SM

HTP/SVF DURACELL T52
HPF QUANTUM LEAP Z952
RP/MP RIGHT TO LOVE 015U
LLSF PAYS TO BELIEVE ZU194
KDP MISS HOYA HAYLEIGH
K-LER/RC MISS HOYA SAXA

CE	BW	WW	YW	MCE	MILK	MARB	REA	API	TI
13.4	1.7	79.8	112.9	6.7	16.5	0.16	0.82	120.2	79.8

AI BRED 6/6/25 TO WEBR SPARTAN J16 (RAAA: 4474053)
PE 6/18/25 - 8/15/25 TO SJF SMJ PAYROLL (ASA: 3992818)
EST. DUE LATE APRIL

Here we present a HPF Quantum Leap Z952 sired daughter of the dominate triple crown winning, KDP Miss Hoya Hayleigh. She is a full sister to the pair of females that caused a stir north of the border at Black Gold Simmentals when they commanded \$73,000 and \$35,000. Of this pair came Black Gold Ms Hayleigh 153K who was eventually crowned as the 2023 Canadian Western Agribition First Lady Classic Supreme Champion Heifer.

41 AWR UDE HAYLEIGH 01M
ASA 4552907 • DOB 1/1/24 • TATTOO 1M • BREED PB SM

PROFIT
EC REBEL 156F
DSFF COUNTLESS 357D
LLSF PAYS TO BELIEVE ZU194
KDP MISS HOYA HAYLEIGH
K-LER/RC MISS HOYA SAXA

CE	BW	WW	YW	MCE	MILK	MARB	REA	API	TI
10.0	3.1	77.5	111.4	5.4	18.9	0.06	0.70	115.3	74.1

AI BRED 6/1/25 TO HEIKEN IMPULSE (AAA: 20010364)
PE 6/18/25 - 8/15/25 TO SJF SMJ PAYROLL (ASA: 3992818)
EST. DUE EARLY APRIL

The powers of KDP Miss Hoya Hayleigh's genetic consistency are proven once again here with AWR UDE Hayleigh 01M, a daughter of the \$200,000 EC Rebel 156F. The EC Rebel 156F influence has become a sought-after source of stock that come with added density, rib shape, hair quality and eye appeal. Those would all be descriptions that fit the bill in this situation.

40 AWR UDE HAYLEIGH 103M
ASA 4552913 • DOB 2/14/24 • TATTOO 103M • BREED PB SM

KRJ DAKOTA OUTLAW G974
NEXT LEVEL
KRD L CAEDENCE C37
LLSF PAYS TO BELIEVE ZU194
KDP MISS HOYA HAYLEIGH
K-LER/RC MISS HOYA SAXA

CE	BW	WW	YW	MCE	MILK	MARB	REA	API	TI
11.2	2.9	78.7	114.6	6.4	20.3	0.00	0.99	119.4	74.4

AI BRED 6/5/25 TO HEIKEN IMPULSE (AAA: 20010364)
PE 6/18/25 - 8/15/25 TO SJF SMJ PAYROLL (ASA: 3992818)
EST. DUE LATE APRIL

AWR UDE Hayleigh 103M hits us from a generating standpoint, as the future looks very promising for this broody bodied, extra dense shaped female. The Next Level cattle have been praised both by show judges and stockmen wanting to increase profitability with feeder cattle, they are the real-world kind that come with an extra shot of real-world performance and added dimension.



BLACK GOLD MS HAYLEIGH 153K
Full Sister to Lot 39

AWR UDE DIAMOND 32M



TJSC DIAMOND 167E
Dam of Lots 42-44



KLS DIAMOND W516
Maternal Granddam of Lots 42-44



UDE DIAMOND 141J
Full Sister to Lots 42-44



AWR UDE DIAMOND 63M

PEDIGREE FOR LOTS 42-44

42 AWR UDE DIAMOND 32M
ASA 4552916 • DOB 1/17/24 • TATTOO 32M • BREED PB SM

CNS PAYS TO DREAM T759
LLSF PAYS TO BELIEVE ZU194
LLSF URABABYDOLL U194
MR HOC BROKER
TJSC DIAMOND 167E
KLS DIAMOND W516

CE	BW	WW	YW	MCE	MILK	MARB	REA	API	TI
10.1	3.4	79.5	114.3	5.7	20.5	0.06	0.86	116.5	75.1

AI BRED 6/6/25 TO HEIKEN IMPULSE (AAA: 20010364)
PE 6/18/25 - 8/15/25 TO SJF SMJ PAYROLL (ASA: 3992818)
LIKELY SAFE AI. EST. DUE MID MARCH

43 AWR UDE DIAMOND 63M
ASA 4552918 • DOB 1/30/24 • TATTOO 63M • BREED PB SM

CE	BW	WW	YW	MCE	MILK	MARB	REA	API	TI
10.1	3.4	79.5	114.3	5.7	20.5	0.06	0.86	116.5	75.1

AI BRED 6/6/25 TO HEIKEN IMPULSE (AAA: 20010364)
PE 6/18/25 - 8/15/25 TO SJF SMJ PAYROLL (ASA: 3992818)
LIKELY SAFE AI. EST. DUE MID MARCH

44 AWR UDE DIAMOND 35M
ASA 4552917 • DOB 1/18/24 • TATTOO 35M • BREED PB SM

CE	BW	WW	YW	MCE	MILK	MARB	REA	API	TI
10.1	3.4	79.5	114.3	5.7	20.5	0.06	0.86	116.5	75.1

AI BRED 6/10/25 TO HEIKEN IMPULSE (AAA: 20010364)
PE 6/18/25 - 8/15/25 TO SJF SMJ PAYROLL (ASA: 3992818)
EST. DUE LATE APRIL

LOTS 42-44

When it comes to listing the most dominate cow families in the Simmental breed, it would be amiss to not include the Diamond tribe. It starts with KLS Diamond W516, the 2011 NWSS Grand Champion Purebred Simmental Heifer that has formed the back bone of the Jones Show Cattle Simmental program and maternal granddam of lots 42-44. Next in line you will find, the dam of this trio, 167E. She is sired by the Triple Crown winning MR HOC Broker and was the 2018 AJSA National Classic Reserve Grand Champion Purebred Owned Heifer for Maddy Udell. Here we are excited to present three full sisters from the Broker daughter, and her most consistent mating with LLSF Pays To Believe ZU194. They are full sisters to the \$30,000 UDE Diamond 141J that was campaigned to countless titles by Jade Beeson. The repertoire of wins from 141J include being the 2022 Iowa State Fair Grand Champion Simmental and 4th Overall Breeding Heifer in the 4-H Show, along with being the Grand Champion Simmental Female in the Open Show. The generations of champions from this pedigree are damning evidence that this cow family stands on the front edge of the Simmental business, and has the potential to outproduce themselves every generation, get your program on track with these phenotype standouts of the offering.



HARAS MISS PRINCESS 100Z
 Dam of Lots 45-47 & Maternal Granddam of Lots 47 & 48

LOTS 45-47

The Haras Miss Princess 100Z matriarch has been one of the most reliable and consistent generators of both banners and dollars for the Udell Cattle Company program. She is the direct dam of the next three SimGenetic prospects and the granddam of lots 48 & 49. She has served a long tenure of excellence and has cemented her position upon the best to ever do it. Haras Miss Princess 100Z was a dominant champion herself for Maddy, yet the best was still to come with her track record in production, and the propulsion she caused for the Simmental program in Sioux City. We are excited about what these daughters of JSUL Something About Mary 8421 have to offer when it comes to power and body shape, they are stamped with the trademarked "100Z" design, coming bold, curvy and impressive from every angle of inspection.

PEDIGREE FOR LOTS 45-47

45	AWR UDE PRINCESS 164M
	ASA 4552903 • DOB 3/6/24 • TATTOO 164M • BREED 3/4 SM 1/8 AN 3/32 MA 1/32 CA

W/C RELENTLESS 32C
JSUL SOMETHING ABOUT MARY 8421
 JBSF PROUD MARY
 MR HOC BROKER
HARAS MISS PRINCESS 100Z
 HARAS HAIRIETTA CLONE H4W

CE	BW	WW	YW	MCE	MILK	MARB	REA	API	TI
10.8	2.7	71.8	106.5	3.4	14.1	0.04	0.74	94.5	65.3

AI BRED 6/5/25 TO SJF SMJ PAYROLL (ASA: 3992818)
 PE 6/18/25 - 8/15/25 TO SJF SMJ PAYROLL (ASA: 3992818)
 LIKELY SAFE AI. EST. DUE MID MARCH



BLACK GOLD/PAW MS PRINCESS
 Maternal Sister to Lots 45-47

46	AWR UDE PRINCESS 171M
	ASA 4552904 • DOB 3/7/24 • TATTOO 171M • BREED 3/4 SM 1/8 AN 3/32 MA 1/32 CA

CE	BW	WW	YW	MCE	MILK	MARB	REA	API	TI
10.8	2.7	71.8	106.5	3.4	14.1	0.04	0.74	94.5	65.3

AI BRED 6/8/25 TO SJF SMJ PAYROLL (ASA: 3992818)
 PE 6/18/25 - 8/15/25 TO SJF SMJ PAYROLL (ASA: 3992818)
 EST. DUE EARLY APRIL



UDE PRINCESS 172L
 Maternal Sister to Lots 45-47

47	AWR UDE PRINCESS 51M
	ASA 4552902 • DOB 1/25/24 • TATTOO 51M • BREED 3/4 SM 1/8 AN 3/32 MA 1/32 CA

CE	BW	WW	YW	MCE	MILK	MARB	REA	API	TI
10.8	2.7	71.8	106.5	3.4	14.1	0.04	0.74	94.5	65.3

AI BRED 6/6/25 TO SJF SMJ PAYROLL (ASA: 3992818)
 PE 6/18/25 - 8/15/25 TO SJF SMJ PAYROLL (ASA: 3992818)
 EST. DUE MID APRIL





48

AWR UDE PRINCESS 216M

ASA 4552924 • DOB 3/20/24 • TATTOO 216M • BREED 5/8 SM 5/16 AN 1/16 MA

HTP/SVF DURACELL T52

THSF LOVER BOY B33

RP/MP RIGHT TO LOVE 015U

SCC SCH 24 KARAT 838

UDE PRINCESS 247J

HARAS MISS PRINCESS 100Z

CE	BW	WW	YW	MCE	MILK	MARB	REA	API	TI
9.8	1.8	80.6	115.8	6.1	26.4	0.24	0.65	111.9	77.2

AI BRED 6/6/25 TO SJF SMJ PAYROLL (ASA: 3992818)
 PE 6/18/25 - 8/15/25 TO SJF SMJ PAYROLL (ASA: 3992818)
 EST. DUE LATE APRIL

Here you will find a THSF Lover Boy B33 daughter that stems from the maternal powers of the great Haras Miss Princess 100Z dynasty through a SCC SCH 24 Karat 838 daughter. This high percentage female comes with a chiseled front third, and a high-quality level of presence and balance. As she continues to develop further in calf and mature, she only elevates her position on our favorites list.



49

AWR UDE PRINCESS 26M

ASA 4552923 • DOB 1/15/24 • TATTOO 26M • BREED PB SM

PROFIT

EC REBEL 156F

DSFF COUNTESS 357D

TLLC ONE EYED JACK

UDE FLOSSY 227E

HARAS MISS PRINCESS 100Z

CE	BW	WW	YW	MCE	MILK	MARB	REA	API	TI
7.7	3.7	72.9	104.8	1.4	18.2	0.02	0.63	98.6	69.0

AI BRED 6/7/25 TO HEIKEN IMPULSE (AAA: 20010364)
 PE 6/18/25 - 8/15/25 TO SJF SMJ PAYROLL (ASA: 3992818)
 EST. DUE LATE APRIL

AWR UDE Princess 26M is a decedent of the \$190,000 Hara's Miss Princess 100Z that comes in a purebred package! This daughter of the \$200,000 EC Rebel 156F has some extra foot, and bone, yet she maintains the softness and style that is always synonymous 100Z dynasty. The dam of 26M was a past Udell sale feature that sold to Amelia Miller of Illinois that experienced great success with this female that included being a Reserve Division winner at the 2017 NAILE.

50

AWR UDE MADONNA 138M

ASA PENDING • DOB 3/1/24 • TATTOO 138M • BREED 1/2 SM 1/2 AN

HTP/SVF DURACELL T52

HPF QUANTUM LEAP Z952

RP/MP RIGHT TO LOVE 015U

ANGUS

16K

ANGUS

CE	BW	WW	YW	MCE	MILK	MARB	REA	API	TI
8.8	2.8	76.4	106.5	4.8	20.2	0.16	0.56	105.9	71.2

AI BRED 6/5/25 TO HEIKEN IMPULSE (AAA: 20010364)
 PE 6/18/25 - 8/15/25 TO SJF SMJ PAYROLL (ASA: 3992818)
 EST. DUE EARLY APRIL



UDE PRINCESS 3J

Maternal Sister to the Dam of Lots 48 & 49

A direct daughter of one of the most dominating and accoladed Simmental bulls of the past two decades, HPF Quantum Leap Z952. When it comes to brood cow potential and the kind that return quick on the initial investment then AWR UDE Madonna 138M presents a strong case. An extra capacious and round centered female that rides the line effortlessly between real world beef characteristic and the extras that are required to stand out in the show industry.

LOT 51

This stunning read head, AWR UDE Amy 113M starts a trio of purebred daughters of the phenotype promoting, EC Rebel 156F. While of cause the hide color of 113M helps her to stand out from the crowd, she can also hold a gaze with her added shape and dimension, intriguing proportions, and added balance and symmetry from the side. With the added maternal support of the WS Pilgrim H182U influence, we think there is a bright future ahead here.



EC REBEL 156F
\$200,000 Sire of Lots 51-53



51 **AWR UDE AMY 113M**
ASA 4552920 • DOB 2/19/24 • TATTOO 113M • BREED PB SM

PROFIT
EC REBEL 156F
DSFF COUNTESS 357D
WS PILGRIM H182U
UDE AMY 0213E
SVF IMAGE Z202

CE	BW	WW	YW	MCE	MILK	MARB	REA	API	TI
8.5	3.8	77.4	107.5	3.1	19.0	0.02	0.54	104.5	71.3

PE 6/30/25 - 8/16/25 TO WEBR SPARTAN J16 (RAAA: 4474053)
EST. DUE EARLY APRIL

52 **AWR UDE PRIME PRINCESS 150M**
ASA 4552906 • DOB 3/3/24 • TATTOO 150M • BREED PB SM

PROFIT
EC REBEL 156F
DSFF COUNTESS 357D
WS PILGRIM H182U
UDE PRIME PILGRIM 40D
MISS PRIME

CE	BW	WW	YW	MCE	MILK	MARB	REA	API	TI
9.2	3.1	74.2	101.4	2.9	18.2	0.08	0.64	104.8	72.1

AI BRED 6/5/25 TO HEIKEN IMPULSE (AAA: 20010364)
PE 6/18/25 - 8/15/25 TO SJF SMJ PAYROLL (ASA: 3992818)
EST. DUE EARLY MAY



LOT 52

Check out the eccentric outline and front third that AWR UDE Prime Princess 150M was designed with. Her perfect blaze is the ultimate tree topper to tie together the neat features and impressive quality of this purebred, show heifer producer. We think her mating to SJF SMJ Payroll aligns perfectly from a phenotype standpoint, and has the potential to knock it out of the park on this first calf.



JS DAIRY QUEEN 27G
Dam of Lot 53

AWR UDE Dairy Queen 236M stems from the legendary, CLRS Dairy Queen 606D that anchored the JS Simmental donor pen for a long time, up until recently when she sold for \$74,000 to Hilltop Simmentals. The MR HOC Broker mating on 606D has certainly been the most successful, and provides the genetic makeup of the dam behind 236M. This is a genetic line that has always been praised for its real-world beef quality, as they are built wide and shapely, and are the easy keeping, high output kind.

53

AWR UDE DAIRY QUEEN 236M

ASA 4552925 • DOB 3/25/24 • TATTOO 236M • BREED PB SM

PROFIT
EC REBEL 156F
 DSFF COUNTESS 357D
 MR HOC BROKER
JS DAIRY QUEEN 27G
 CLRS DAIRY QUEEN 606D

CE	BW	WW	YW	MCE	MILK	MARB	REA	API	TI
7.7	3.3	78.4	111.8	2.8	19.0	-0.03	0.63	105.7	71.5

PE 6/18/25 - 8/15/25 TO SJF SMJ PAYROLL (ASA: 3992818)
 EST. DUE EARLY MAY



W/C STYLE 69E "FAMILY TRADITION"
Sire of Lot 54

The daughters of W/C Style 69E "Family Tradition" have been a very trendy sire group over the past 5 years, and have been opted for by several of the most successful show family's and breeders across the nation. This is a sire group that comes with the unique proportions, flexible skeleton and a pedigree that aligns some of the most successful show and production cattle known to the business. Coming bred to SJF SMJ Payroll, the chances for ROI begin in the first year.

54

AWR UDE SARAS DREAM 61M

ASA 4552901 • DOB 1/29/24 • TATTOO 61M • BREED 1/2 SM 1/2 AN

SILVEIRAS STYLE 9303
W/C STYLE 69E "FAMILY TRADITION"
 MISS WERNING KP 8543U
 PROFIT
HOF SARAS DREAM 6634D
 SILVEIRAS SARAS DREAM 3345

CE	BW	WW	YW	MCE	MILK	MARB	REA	API	TI
9.9	1.4	71.0	110.7	5.9	19.5	0.39	0.53	122.4	75.6

AI BRED 6/5/25 TO SJF SMJ PAYROLL (ASA: 3992818)
 PE 6/18/25 - 8/15/25 TO SJF SMJ PAYROLL (ASA: 3992818)
 EST. DUE LATE APRIL



MR HOC BROKER
Legendary Sire of Lot 55

AWR UDE Sandy 378M delivers the best of both worlds from a pedigree standpoint, supplying dominate producers from both the Simmental and Angus worlds. With the powers of MR HOC Broker and UDE Sandy iH meeting here, you can expect generating potential and consistency that few could match.

55

AWR UDE SANDY 378M

ASA 4556121 • DOB 4/30/24 • TATTOO 378M • BREED 1/2 SM 1/2 AN

SVF STEEL FORCE S701
MR HOC BROKER
 JM BF H25
 SILVEIRAS STYLE 9303
UDE SANDY 1H
 CONLEY SANDY 5104

CE	BW	WW	YW	MCE	MILK	MARB	REA	API	TI
6.6	3.5	77.7	115.7	2.5	19.8	0.00	0.59	92.1	67.3

AI BRED 6/6/25 TO SJF SMJ PAYROLL (ASA: 3992818)
 PE 6/18/25 - 8/15/25 TO SJF SMJ PAYROLL (ASA: 3992818)
 EST. DUE LATE APRIL



56 AWR UDE 297M

ASA 4556249 • DOB 5/7/24 • TATTOO 297M • BREED 1/2 SM 1/2 CS

PROFIT
UDE PROFIT 67F "CODE RED"
 TJSC KANSA 823B

ANGUS
11B
 ANGUS

CE	BW	WW	YW	MCE	MILK	MARB	REA	API	TI
8.5	3.0	75.2	104.3	4.6	20.3	0.14	0.56	103.5	69.7

AI BRED 6/6/25 TO SJF SMJ PAYROLL (ASA: 3992818)
 PE 6/18/25 - 8/15/25 TO SJF SMJ PAYROLL (ASA: 3992818)
 EST. DUE LATE APRIL

We start out the UDE Profit 67F "Code Red" sire group with a bang, as you will find immense quality with AWR UDE 297M, a percentage female that just oozes quality from the point of her nose to the tip of her tail. If you like them built with an added shot of bone and foot, hair quality, swoop to their underline, and tightness of throat latch, then you best mark this one for inspection.



57 AWR UDE 342M

ASA 4556289 • DOB 5/17/24 • TATTOO 342M • BREED 1/2 SM 1/2 CS

PROFIT
UDE PROFIT 67F "CODE RED"
 TJSC KANSA 823B

ANGUS
81203
 ANGUS

CE	BW	WW	YW	MCE	MILK	MARB	REA	API	TI
8.8	2.8	76.9	107.4	4.8	20.2	0.17	0.57	106.0	71.7

AI BRED 6/6/25 TO KROUPALS B&B DIVERSE 3181 (AAA: 20756255)
 PE 6/30/25-8/9/25 TO THOMAS RANCH LOW BIRTH WEIGHT ANGUS BULLS
 EST. DUE LATE APRIL

The outlandish look and aura that is projected by AWR UDE 342M just screams for attention. They don't make Sim-influence cattle like this every day, that have such an elevated and chiseled look and design about their front third, meaning she sets the foundations for a wide range of sire choices to compliment her unconventional talents. Rolling the dice on cattle built like this can certainly pay dividends!



58 AWR UDE 317M

ASA 4556287 • DOB 5/11/24 • TATTOO 317M • BREED 1/2 SM 1/2 CS

PROFIT
UDE PROFIT 67F "CODE RED"
 TJSC KANSA 823B

ANGUS
55183
 ANGUS

CE	BW	WW	YW	MCE	MILK	MARB	REA	API	TI
8.5	2.9	75.5	105.0	4.7	20.2	0.15	0.57	103.9	70.2

AI BRED 6/6/25 TO KROUPALS B&B DIVERSE 3181 (AAA: 20756255)
 PE 6/30/25-8/9/25 TO THOMAS RANCH LOW BIRTH WEIGHT ANGUS BULLS
 LIKELY SAFE AI. EST. DUE MID MARCH

We love the added symmetry and balance that AWR UDE 317M delivers to the party, she checks all the boxes for being both a high production dam and in turn a show heifer producer if mated that direction. With the added eye appeal and look, she reads to offer a very solid base to becoming a consistent source of ROI in production.

59

AWR UDE 600M

ASA PENDING • DOB 4/12/24 • TATTOO 600M • BREED 1/2 SM 1/2 CS

PROFIT

UDE PROFIT 67F "CODE RED"

TJSC KANSA 823B

ANGUS

ANGUS

CE	BW	WW	YW	MCE	MILK	MARB	REA	API	TI
8.9	2.8	76.8	107.3	4.8	20.2	0.17	0.56	106.3	71.6

AI BRED 6/6/25 TO SJF SMJ PAYROLL (ASA: 3992818)
PE 6/18/25 - 8/15/25 TO SJF SMJ PAYROLL (ASA: 3992818)
EST. DUE LATE APRIL



Here we have a heavy structured, dense built daughter of UDE Profit 67F "Code Red" that offers some added robustness and softness of body cavity when compared to her paternal sisters. If you're looking for a female to build a cow family around, and retain some daughters from, then this kind will be easy to tie to.

60

AWR UDE 344M

ASA 4556291 • DOB 5/17/24 • TATTOO 344M • BREED 1/2 SM 1/2 CS

PROFIT

UDE PROFIT 67F "CODE RED"

TJSC KANSA 823B

ANGUS

82026

ANGUS

CE	BW	WW	YW	MCE	MILK	MARB	REA	API	TI
8.8	2.8	76.9	107.4	4.8	20.2	0.17	0.57	106.0	71.7

AI BRED 6/7/25 TO KOUPALS B&B DIVERSE 3181 (AAA: 20756255)
PE 6/30/25-8/9/25 TO THOMAS RANCH LOW BIRTH WEIGHT ANGUS BULLS
EST. DUE EARLY APRIL



AWR UDE 344M will be the kind you find on sale day if you like to pick them a little more eloquent about their front third, and smoother in their muscle pattern. She paints a pretty picture from the side, yet still comes with plenty of dimension and curvature when viewed from a different vantage point. The time proven synergy of Profit and his derivatives on Angus stock proves itself through these UDE Profit 67F "Code Red" sired daughters.

61

AWR UDE 422M

ASA 4556258 • DOB 5/25/24 • TATTOO 422M • BREED 1/2 SM 1/2 CS

PROFIT

UDE PROFIT 67F "CODE RED"

TJSC KANSA 823B

ANGUS

013X

ANGUS

CE	BW	WW	YW	MCE	MILK	MARB	REA	API	TI
8.1	3.2	73.6	101.3	4.6	20.2	0.12	0.56	100.8	67.9

AI BRED 6/5/25 TO SJF SMJ PAYROLL (ASA: 3992818)
PE 6/18/25 - 8/15/25 TO SJF SMJ PAYROLL (ASA: 3992818)
EST. DUE LATE APRIL



UDE Profit 67F "Code Red" has proven to be a go to herd sire for adding an ideal hind leg, refined head and neck and from the daughters that are in production for programs around the nation, the udder quality of his daughters leaves little to be desired. We think as this half-blood female continues to mature, she is going to make an awesome cow in production.

62

AWR UDE 308M

ASA 4556285 • DOB 5/8/24 • TATTOO 308M • BREED 1/2 SM 1/2 CS

PROFIT

UDE PROFIT 67F "CODE RED"

TJSC KANSA 823B

ANGUS

84290

ANGUS

CE	BW	WW	YW	MCE	MILK	MARB	REA	API	TI
8.8	2.8	76.9	107.4	4.8	20.2	0.17	0.57	106.0	71.7

AI BRED 6/8/25 TO KROUPALS B&B DIVERSE 3181 (AAA: 20756255)
 PE 6/30/25-8/9/25 TO THOMAS RANCH LOW BIRTH WEIGHT ANGUS BULLS
 EST. DUE LATE APRIL

63

AWR UDE 332M

ASA 4556251 • DOB 5/16/24 • TATTOO 332M • BREED 1/2 SM 1/2 CS

PROFIT

UDE PROFIT 67F "CODE RED"

TJSC KANSA 823B

ANGUS

79854

ANGUS

CE	BW	WW	YW	MCE	MILK	MARB	REA	API	TI
8.8	2.8	76.4	106.5	4.8	20.2	0.16	0.56	105.9	71.2

AI BRED 6/5/25 TO SJF SMJ PAYROLL (ASA: 3992818)
 PE 6/18/25 - 8/15/25 TO SJF SMJ PAYROLL (ASA: 3992818)
 EST. DUE EARLY APRIL

Diving into the pedigree of UDE Profit 67F "Code Red" reveals a tradition of excellence that is generations long within the Simmental breed. His full sister, UDE Kansa 40F is one of the hottest young cows in the breed, being the dam of the \$95,000 FLAR Becky 315L, the 2024 Cattleman's Congress Reserve Grand Champion Percentage Simmental Heifer that was campaigned by Mercedes Ferree. She too is the dam FLAR LFTZ Becky's Krissy 525N, that was a feature of the 2025 Lafrentz Cattle Company Elite Female Sale selling to the Kennedy family for \$65,000.

64

AWR UDE 390M

ASA 4556256 • DOB 5/22/24 • TATTOO 390M • BREED 1/2 SM 1/2 CS

PROFIT

UDE PROFIT 67F "CODE RED"

TJSC KANSA 823B

ANGUS

88E

ANGUS

CE	BW	WW	YW	MCE	MILK	MARB	REA	API	TI
8.8	2.8	76.4	106.5	4.8	20.2	0.16	0.56	105.9	71.2

PE 6/18/25 - 8/15/25 TO SJF SMJ PAYROLL (ASA: 3992818)
 EST. DUE LATE APRIL

A half-blood daughter of UDE Profit 67F "Code Red", she has a big set of running gear that flex just like they should. Its females with this build that we project to have long tenures in the cowherd. She comes big bodied and easy keeping in her kind, she checks plenty of boxes on the checklist we make for replacement females.

UDE Profit 67F "Code Red" is one impressive specimen. He has been a long-term source of added value for the Udell program, often supplying show heifer prospects for their nationally acclaimed show heifer sale each fall. He is a son of the breed changing, \$400,000 Profit, and stems from TJSC Kansa 823B, the 2015 AJSA National Classic Reserve Grand Champion Purebred Simmental Heifer, 2015 American Royal Reserve Grand Champion Purebred Simmental Heifer, 2015 NAILE Reserve Grand Champion Purebred Simmental Heifer, and 2016 NWSS Reserve Grand Champion Purebred Simmental Heifer!



65

AWR UDE 386M

ASA 4556254 • DOB 5/22/24 • TATTOO 386M • BREED 1/2 SM 1/4 AN 1/4 CS

PROFIT

UDE PROFIT 67F “CODE RED”

TJSC KANSA 823B

ANGUS

102F

ANGUS

CE	BW	WW	YW	MCE	MILK	MARB	REA	API	TI
10.0	2.2	75.1	106.0	5.5	20.1	0.22	0.48	101.1	72.5



AI BRED 6/8/25 TO SJF SMJ PAYROLL (ASA: 3992818)
 PE 6/30/25 - 8/16/25 TO WEBR SPARTAN J16 (RAAA: 4474053)
 EST. DUE LATE APRIL

Rounding out the UDE Profit 67F “Code Red” daughters is an incredible red headed female that could certainly headline any offering. The uniqueness of her proportions, flawless structural design, big and square feet, elongation of her front third, and maternal shape she is blessed with sorts her into a league of her own. This is the kind that stockmen from every walk of life can appreciate, and likely find use for regardless of their environment or production goals.

66

AWR UDE 218M

ASA 4556245 • DOB 4/21/24 • TATTOO 218M • BREED 1/2 SM 1/2 CS

UDE PROFIT 67F “CODE RED”

UDE PROFIT 228J

TJSC DIAMOND 167E

ANGUS

79853

ANGUS

CE	BW	WW	YW	MCE	MILK	MARB	REA	API	TI
9.3	3.0	76.5	108.3	4.9	20.6	0.08	0.75	103.7	69.4



AI BRED 6/6/25 TO KOUPALS B&B DIVERSE 3181 (AAA: 20756255)
 PE 6/18/25 - 8/15/25 TO SJF SMJ PAYROLL (ASA: 3992818)
 EST. DUE LATE APRIL

We roll into the UDE Profit 228J sired daughters with a head of steam, as this show stopping red head has plenty to offer from a phenotype and pedigree standpoint. Its only human nature to stop and stare when this female is parked, as she paints a pretty picture from the side, and exudes a look of quality from a structure and feature stand point.

67

AWR UDE 249M

ASA 4556260 • DOB 4/26/24 • TATTOO 249M • BREED 1/2 SM 1/2 CS

UDE PROFIT 67F “CODE RED”

UDE PROFIT 228J

TJSC DIAMOND 167E

CHAROLAIS

102D

CHAROLAIS

CE	BW	WW	YW	MCE	MILK	MARB	REA	API	TI
9.2	3.0	76.1	107.5	4.8	20.7	0.07	0.75	102.6	68.9



AI BRED 6/5/25 TO TR LEGACY 1707J ET (AICA: EM960037)
 PE 6/30/25 - 8/16/25 TO WEBR SPARTAN J16 (RAAA: 4474053)
 LIKELY SAFE AI. EST. DUE MID MARCH

A highlight of the offering here! While the white hided division may be smaller than normal, this stunner certainly gains some ground from a quality standpoint. We think this pretty featured female can draw a crowd as she comes so correct and balanced in her overall kind, she motors with authority and security, and has the ideal combination of shape and symmetry. To top it off, she comes bred up to her AI with the National Champion Charolais Bull, TR Legacy 1707 ET, a mating likely to yield opportunities for success.



68 AWR UDE 307M
 ASA 4556266 • DOB 5/8/24 • TATTOO 307M • BREED 1/2 SM 1/2 CS

UDE PROFIT 67F "CODE RED"
UDE PROFIT 228J
 TJSC DIAMOND 167E
 ANGUS
70H
 ANGUS

CE	BW	WW	YW	MCE	MILK	MARB	REA	API	TI
9.6	2.8	77.7	110.3	5.0	20.8	0.10	0.76	106.3	71.0

AI BRED 6/7/25 TO KROUPALS B&B DIVERSE 3181 (AAA: 20756255)
 PE 6/30/25-8/9/25 TO THOMAS RANCH LOW BIRTH WEIGHT ANGUS BULLS
 EST. DUE EARLY APRIL



69 AWR UDE 415M
 ASA 4556276 • DOB 5/24/24 • TATTOO 415M • BREED 1/2 SM 1/2 CS

UDE PROFIT 67F "CODE RED"
UDE PROFIT 228J
 TJSC DIAMOND 167E
 ANGUS
804
 ANGUS

CE	BW	WW	YW	MCE	MILK	MARB	REA	API	TI
9.4	2.9	76.9	109.1	4.9	20.6	0.08	0.75	104.1	69.9

AI BRED 6/5/25 TO KROUPALS B&B DIVERSE 3181 (AAA: 20756255)
 PE 6/30/25-8/9/25 TO THOMAS RANCH LOW BIRTH WEIGHT ANGUS BULLS
 EST. DUE EARLY MAY

70 AWR UDE 424L
 ASA 4556279 • DOB 10/25/23 • TATTOO 424L • BREED 1/2 SM 1/2 CS

UDE PROFIT 67F "CODE RED"
UDE PROFIT 228J
 TJSC DIAMOND 167E
 ANGUS
11E
 ANGUS

CE	BW	WW	YW	MCE	MILK	MARB	REA	API	TI
9.3	3.0	76.5	108.3	4.9	20.6	0.08	0.75	103.7	69.4

AI BRED 6/6/25 TO KROUPALS B&B DIVERSE 3181 (AAA: 20756255)
 PE 6/18/25 - 8/15/25 TO SJF SMJ PAYROLL (ASA: 3992818)
 EST. DUE EARLY MAY

71 AWR UDE 253M
 ASA 4556247 • DOB 4/28/24 • TATTOO 253M • BREED 1/2 SM 1/2 CS

UDE PROFIT 67F "CODE RED"
UDE PROFIT 228J
 TJSC DIAMOND 167E
 ANGUS
52D
 ANGUS

CE	BW	WW	YW	MCE	MILK	MARB	REA	API	TI
9.2	3.0	76.1	107.5	4.8	20.7	0.07	0.75	102.6	68.9

AI BRED 6/7/25 TO KROUPALS B&B DIVERSE 3181 (AAA: 20756255)
 PE 6/30/25-8/9/25 TO THOMAS RANCH LOW BIRTH WEIGHT ANGUS BULLS
 EST. DUE EARLY APRIL



72

AWR UDE 423M

ASA 4556332 • DOB 5/25/24 • TATTOO 423M • BREED 1/2 SM 1/2 CS

MR HOC BROKER

JBSF BLUE 075H

JBSF JUSTA BABE 115F

ANGUS

64985

ANGUS

CE	BW	WW	YW	MCE	MILK	MARB	REA	API	TI
6.5	3.5	77.3	114.9	2.4	19.8	-0.01	0.59	91.0	66.7

AI BRED 6/7/25 TO SJF SMJ PAYROLL (ASA: 3992818)
 PE 6/18/25 - 8/15/25 TO SJF SMJ PAYROLL (ASA: 3992818)
 EST. DUE EARLY APRIL

We begin a large group of JBSF Blue 075H daughters with the powerfully built, rugged shaped, AWR UDE 423M. When you want to build them stouter, bolder and heavier structured then this is the kind that you need to lean towards. Yet in this situation, no sacrifices need to be made about eye appeal, and femininity, truly a have your cake and eat it too kind of scenario. We think this percentage female will be a fun one to breed on.



73

AWR UDE 362M

ASA 4556303 • DOB 5/20/24 • TATTOO 362M • BREED 1/2 SM 1/2 CS

MR HOC BROKER

JBSF BLUE 075H

JBSF JUSTA BABE 115F

ANGUS

111J

ANGUS

CE	BW	WW	YW	MCE	MILK	MARB	REA	API	TI
7.0	3.3	79.4	118.6	2.7	20.1	0.03	0.59	95.9	69.5

AI BRED 6/7/25 TO SJF SMJ PAYROLL (ASA: 3992818)
 PE 6/18/25 - 8/15/25 TO SJF SMJ PAYROLL (ASA: 3992818)
 EST. DUE LATE APRIL

With a shot of extra length and extension, this half blood, JBSF Blue 075H daughter reads with female making potential. We think she has the credentials to mate up successfully with a large repertoire of Angus bulls to sire awesome daughters that you will want to retain.



74

AWR UDE 366M

ASA 4556307 • DOB 5/20/24 • TATTOO 366M • BREED 1/2 SM 1/2 CS

MR HOC BROKER

JBSF BLUE 075H

JBSF JUSTA BABE 115F

ANGUS

253H

ANGUS

CE	BW	WW	YW	MCE	MILK	MARB	REA	API	TI
6.9	3.3	78.9	117.7	2.6	19.9	0.02	0.59	94.6	68.8

PE 6/18/25 - 8/15/25 TO SJF SMJ PAYROLL (ASA: 3992818)
 EST. DUE EARLY APRIL

AWR UDE 366M is so striking from the side, yet she combines this phenomenal look and build with a balanced and completeness that helps to project her abilities in production. The pregnancy by SJF SMJ Payroll that she is carrying, and the prospect of that this high percentage calf sure would have us excited about calving season.



The daughters of JBSF Blue 075H are consistently striking and ultra-feminine in their design, they come with added extension and elongation. We love the flexibility, extra angulation, and feminine refinement that you will find so often with these daughters. Their sire, is a son of the Triple Crown winning, and incredible producer, MR HOC Broker, and is out of the JBSF Justa Babe 115F female who is from the famed W/C Relentless 32C x Brooks Steel Magnolia X57 mating that produced the 2019 AJSA National Classic Grand Champion and Reserve Grand Champion Purebred Simmental Heifers. JBSF Justa Babe 115F is a maternal sister to the legendary JBSF Proud Mary, the high revenue generating donor at Sullivan Farms.

75 AWR UDE 374M
 ASA 4556309 • DOB 5/21/24 • TATTOO 374M • BREED 1/2 SM 1/2 CS

MR HOC BROKER
JBSF BLUE 075H
 JBSF JUSTA BABE 115F
 ANGUS
L654
 ANGUS

CE	BW	WW	YW	MCE	MILK	MARB	REA	API	TI
5.9	3.8	74.9	110.4	2.3	19.8	-0.04	0.59	87.0	64.0

AI BRED 6/6/25 TO SJF SMJ PAYROLL (ASA: 3992818)
 PE 6/18/25 - 8/15/25 TO SJF SMJ PAYROLL (ASA: 3992818)
 EST. DUE EARLY MAY

76 AWR UDE 421M
 ASA 4556330 • DOB 5/25/24 • TATTOO 421M • BREED 1/2 SM 1/2 CS

MR HOC BROKER
JBSF BLUE 075H
 JBSF JUSTA BABE 115F
 ANGUS
53920
 ANGUS

CE	BW	WW	YW	MCE	MILK	MARB	REA	API	TI
6.4	3.6	76.8	114.1	2.4	19.8	-0.02	0.59	90.3	66.2

AI BRED 6/5/25 TO SJF SMJ PAYROLL (ASA: 3992818)
 PE 6/18/25 - 8/15/25 TO SJF SMJ PAYROLL (ASA: 3992818)
 EST. DUE EARLY APRIL

77 AWR UDE 360M
 ASA 4556301 • DOB 5/20/24 • TATTOO 360M • BREED 1/2 SM 1/2 CS

MR HOC BROKER
JBSF BLUE 075H
 JBSF JUSTA BABE 115F
 ANGUS
67886
 ANGUS

CE	BW	WW	YW	MCE	MILK	MARB	REA	API	TI
6.5	3.5	77.3	114.9	2.4	19.8	-0.01	0.59	91.0	66.7

AI BRED 6/7/25 TO SJF SMJ PAYROLL (ASA: 3992818)
 PE 6/18/25 - 8/15/25 TO SJF SMJ PAYROLL (ASA: 3992818)
 EST. DUE LATE APRIL

78 AWR UDE 432M
 ASA 4556336 • DOB 5/26/24 • TATTOO 432M • BREED 1/2 SM 1/2 CS

MR HOC BROKER
JBSF BLUE 075H
 JBSF JUSTA BABE 115F
 ANGUS
71058
 ANGUS

CE	BW	WW	YW	MCE	MILK	MARB	REA	API	TI
6.6	3.5	77.7	115.7	2.5	19.8	0.00	0.59	92.1	67.3

AI BRED 6/6/25 TO SJF SMJ PAYROLL (ASA: 3992818)
 PE 6/18/25 - 8/15/25 TO SJF SMJ PAYROLL (ASA: 3992818)
 EST. DUE EARLY MAY

79 AWR UDE 402M
 ASA 4556319 • DOB 5/23/24 • TATTOO 402M • BREED 1/2 SM 1/2 CS

MR HOC BROKER
JBSF BLUE 075H
 JBSF JUSTA BABE 115F
 ANGUS
74694
 ANGUS

CE	BW	WW	YW	MCE	MILK	MARB	REA	API	TI
6.6	3.5	77.7	115.7	2.5	19.8	0.00	0.59	92.1	67.3

AI BRED 6/10/25 TO SJF SMJ PAYROLL (ASA: 3992818)
 PE 6/18/25 - 8/15/25 TO SJF SMJ PAYROLL (ASA: 3992818)
 EST. DUE LATE APRIL

80 AWR UDE 416M
 ASA 4556324 • DOB 5/24/24 • TATTOO 416M • BREED 1/2 SM 1/2 CS

MR HOC BROKER
JBSF BLUE 075H
 JBSF JUSTA BABE 115F
 ANGUS
77161
 ANGUS

CE	BW	WW	YW	MCE	MILK	MARB	REA	API	TI
6.6	3.5	77.7	115.7	2.5	19.8	0.00	0.59	92.1	67.3

AI BRED 6/6/25 TO SJF SMJ PAYROLL (ASA: 3992818)
 PE 6/18/25 - 8/15/25 TO SJF SMJ PAYROLL (ASA: 3992818)
 LIKELY SAFE AI. EST. DUE MID MARCH





81 **AWR UDE 397M**

ASA 4556315 • DOB 5/23/24 • TATTOO 397M • BREED 1/2 SM 1/2 CS

MR HOC BROKER
JBSF BLUE 075H
 JBSF JUSTA BABE 115F
 ANGUS
77225
 ANGUS

CE	BW	WW	YW	MCE	MILK	MARB	REA	API	TI
6.6	3.5	77.7	115.7	2.5	19.8	0.00	0.59	92.1	67.3

AI BRED 6/6/25 TO SJF SMJ PAYROLL (ASA: 3992818)
 PE 6/18/25 - 8/15/25 TO SJF SMJ PAYROLL (ASA: 3992818)
 EST. DUE EARLY MAY

82 **AWR UDE 364M**

ASA 4556305 • DOB 5/20/24 • TATTOO 364M • BREED 1/2 SM 1/2 CS

MR HOC BROKER
JBSF BLUE 075H
 JBSF JUSTA BABE 115F
 ANGUS
138E
 ANGUS

CE	BW	WW	YW	MCE	MILK	MARB	REA	API	TI
6.6	3.5	77.7	115.7	2.5	19.8	0.00	0.59	92.1	67.3

AI BRED 6/6/25 TO SJF SMJ PAYROLL (ASA: 3992818)
 PE 6/18/25 - 8/15/25 TO SJF SMJ PAYROLL (ASA: 3992818)
 EST. DUE LATE APRIL

83 **AWR UDE 411M**

ASA 4556321 • DOB 5/24/24 • TATTOO 411M • BREED 1/2 SM 1/2 CS

MR HOC BROKER
JBSF BLUE 075H
 JBSF JUSTA BABE 115F
 ANGUS
144C
 ANGUS

CE	BW	WW	YW	MCE	MILK	MARB	REA	API	TI
6.4	3.6	76.8	114.1	2.4	19.8	-0.02	0.59	90.3	66.2

AI BRED 6/5/25 TO SJF SMJ PAYROLL (ASA: 3992818)
 PE 6/18/25 - 8/15/25 TO SJF SMJ PAYROLL (ASA: 3992818)
 LIKELY SAFE AI. EST. DUE MID MARCH

84 **AWR UDE 259M**

ASA 4556295 • DOB 4/29/24 • TATTOO 259M • BREED 1/2 SM 1/2 CS

MR HOC BROKER
JBSF BLUE 075H
 JBSF JUSTA BABE 115F
 ANGUS
35E
 ANGUS

CE	BW	WW	YW	MCE	MILK	MARB	REA	API	TI
6.6	3.5	77.7	115.7	2.5	19.8	0.00	0.59	92.1	67.3

AI BRED 6/7/25 TO SJF SMJ PAYROLL (ASA: 3992818)
 PE 6/18/25 - 8/15/25 TO SJF SMJ PAYROLL (ASA: 3992818)
 EST. DUE EARLY MAY

85 **AWR UDE 418M**

ASA 4556328 • DOB 5/24/24 • TATTOO 418M • BREED 1/2 SM 1/2 CS

MR HOC BROKER
JBSF BLUE 075H
 JBSF JUSTA BABE 115F
 ANGUS
61G
 ANGUS

CE	BW	WW	YW	MCE	MILK	MARB	REA	API	TI
6.8	3.4	78.5	117.1	2.6	19.9	0.01	0.59	93.5	68.3

PE 6/18/25 - 8/15/25 TO SJF SMJ PAYROLL (ASA: 3992818)
 EST. DUE LATE APRIL

86 **AWR UDE 401M**

ASA 4556317 • DOB 5/23/24 • TATTOO 401M • BREED 1/2 SM 1/2 CS

MR HOC BROKER
JBSF BLUE 075H
 JBSF JUSTA BABE 115F
 ANGUS
80F
 ANGUS

CE	BW	WW	YW	MCE	MILK	MARB	REA	API	TI
6.7	3.4	78.1	116.5	2.6	19.8	0.00	0.59	92.5	67.7

AI BRED 6/6/25 TO SJF SMJ PAYROLL (ASA: 3992818)
 PE 6/18/25 - 8/15/25 TO SJF SMJ PAYROLL (ASA: 3992818)
 LIKELY SAFE AI. EST. DUE MID MARCH



LOTS 87 & 88

The mating behind this pair of heifers would certainly feature in the Hall Of Fame for show cattle matings. Their dam, JSUL Red Thunder 9051W would classify as one of the most dominant producing females in the show cattle business. Her lifetime earnings, and resume of champions is unparalleled and even after almost 10 years, her dominance continues as she still generates high sellers, champions & perhaps even most important, daughters that generate with the same potency.



UDE STYLIN THUNDER 22J ET
Full Sister to Lots 87 & 88



87 **AWR UDE RED THUNDER 16M ET**
ACA 428467 • DOB 01/11/2024 • TATTOO 16M • BREED CHIANINA

GAMBLES HOT ROD
SILVEIRAS STYLE 9303
SILVEIRAS ELBA 2520
ASHW WHO DA MAN
JSUL RED THUNDER 9051W-2 ET
SULL 60

CE	BW	WW	YW	MCE	MILK	MARB	REA
12	1.2	54	80	6	16	0.53	0.27

AI BRED 6/10/25 TO BBR MAFIA M.A.X 667K ET (AMAA: 532018)
PE 6/30/25-8/9/25 TO THOMAS RANCH LOW BIRTH WEIGHT ANGUS BULLS
EST. DUE EARLY MAY

88 **AWR UDE RED THUNDER 174M ET**
ACA 428468 • DOB 03/08/2024 • TATTOO 174M • BREED CHIANINA

GAMBLES HOT ROD
SILVEIRAS STYLE 9303
SILVEIRAS ELBA 2520
ASHW WHO DA MAN
JSUL RED THUNDER 9051W-2 ET
SULL 60

CE	BW	WW	YW	MCE	MILK	MARB	REA
12	1.2	54	80	6	16	0.53	0.27

AI BRED 6/7/25 TO BBR MAFIA M.A.X 667K ET (AMAA: 532018)
PE 6/30/25-8/9/25 TO THOMAS RANCH LOW BIRTH WEIGHT ANGUS BULLS
LIKELY SAFE AI. EST. DUE MID MARCH



The Style x Red Thunder mating remains one of the most dominant show heifer mating's of the past decade! The running average on the full sisters to this duo marketed by Udell Cattle Company is well over \$15,000. The list is long and illustrious, an example of the full circle moments that this mating has caused for the families who have invested comes from "The Advantage" Production Sale of 2020, with the \$50,000 sale feature, UDE Black Thunder 5H. You will now recognize UDE Black Thunder 5H or "Gloria" as the knockout donor to arise from the 2023 sale season where in her first set of embryo calves she raised a \$101,500, Chosen One daughter.



UDE BLACK THUNDER 5H ET
Full Sister to Lots 87 & 88



AWR UDE
mercy
204M ET

lot 90

89 AWR UDE ELLIE 276M ET
AMAA 553996 • DOB 5/10/24 • TATTOO 276M • BREED MAINE ANGUS

MINN LIVE ACTION 203Y
WEIS ALL ME 10F
BSC CANDI 42Z
EXAR BLUE CHIP 1877B
UDE ELLIE 9197
SLL ELLIE 2201

CE	BW	WW	YW	MCE	MILK	MARB	REA
11	0.4	43	75	5	14	0.63	0.27

AI BRED 6/5/25 TO BBR MAFIA M.A.X 667K ET (AMAA: 532018)
PE 6/30/25-8/9/25 TO THOMAS RANCH LOW BIRTH WEIGHT ANGUS BULLS
EST. DUE EARLY MAY

The MaineAngus business is on fire right now. This daughter of Weis All Me 10F comes built super complete and functional in her basic design, with a running gear that will never be questioned, and a look and eye appeal that will transmit into an incredible set of daughters, that will work both in the real world, as reliably as the showing, This donor cow prospect paints a super powerful picture from the side, and comes packing a punch with her impressive muscle shape, pin width and spring of rib. Maternally she stems from the high selling, UDE Ellie 9197, who is a daughter of the powerful EXAR Blue Chip 1877B x SLL Ellie 2201 mating that was a longtime source of elite quality for the program and would also be responsible for the iconic, UDE Ellie 9230.

90 UDE MERCY 204M ET
AHA 4572052 • DOB 3/26/24 • TATTOO 204M • BREED HEREFORD

CHURCHILL SENSATION 028X
UPS SENSATION 2296 ET
UPS JT MISS NEON 78111ET
CHAC MASON 2214
DELHAWK MERCY 10D ET
WRB DELHAWK MILLIE 1309 ET

CE	BW	WW	YW	MCE	MILK	MARB	REA
2.1	3.1	55	88	0.5	30	-0.09	0.9

AI BRED 6/10/25 TO WEBR SPARTAN J16 (RAAA: 4474053)
PE 6/30/25-8/9/25 TO WEBR SPARTAN J16 (RAAA: 4474053)
EST. DUE LATE APRIL

Hereford buyers gather around! Here we present the opportunity to buy into a powerful lineage that is supported by champions on either side of the pedigree. Sired by one of the best in the business, UPS Sensation 2296, and then on the maternal side you will find Delhawk Mercy 10D, the \$140,000 2017 NWSS Reserve Grand Champion Polled Hereford Heifer. The dam of 10D, WRB Delhawk Millie 1309 ET, was a former NWSS Division Champion too. A three-quarter sister in blood to 228M was the \$22,000 selection of Bar C Livestock and a full sister was the \$10,000 of Veale Ranches.



WEIS ALL ME 10F
Sire of Lot 89



UDE ELLIE 9197
Dam of Lot 89



DELHAWK MERCY 10D ET
Dam of Lot 90



UDE MERCY 228M ET
Full Sister to Lot 90

lots 91 THROUGH 96



AWR UDE PEARLE 248M



91 AWR UDE PEARLE 248M

RAAA 4963666 • DOB 4/13/24 • TATTOO 248M • BREED A - 100% AR

AI BRED 6/5/25 TO WEBR SPARTAN J16 (RAAA: 4474053)
PE 6/30/25-8/9/25 TO WEBR SPARTAN J16 (RAAA: 4474053)
LIKELY SAFE AI. EST. DUE MID MARCH



WEBR SPARTAN J16
Service sire to several females throughout the offering!

WEBR DOC HOLLIDAY 2N

WEBR NIGHT TRAIN 324

BJF LANA'S EQUAL 8021U

RMS BOWIE 0708

MNS PEARLE 3121

PIE MISS GOODNIGHT 8003

PRO S	HB	GM	CE	BW	WW	YW	MILK	MARB	REA
58	30	28	9	-0.5	69	110	20	0.26	-0.13

Those who have come early to the ranch to inspect the offering have found a lot of quality in this Red Angus division, as these females are built right for the Texas environment, coming with plenty of efficiency and do ability. This large group of full sister's stem from the champion generator, MNS Pearle 3121. These MNS Pearle 3121 daughters are maternal sisters to one of the most dominant Red Angus show females of the last decade! EDG Finley 3121 was successfully campaigned by Hadley Hartman to countless victories. She was the 2019 NAJRAE Grand Champion Owned Heifer and the 2019 NAILE Grand Champion Red Angus Heifer Open and Junior Show. Finley was selected as the 2020 NWSS Grand Champion Red Angus Female in the Open and Junior Show. She completed her show career as the 2020 American Royal Grand Champion Red Angus Female and Supreme Champion Junior Breeding Heifer Overall Breeds for Hadley Hartman!

EDG Finley 3121 was shown at the American Royal with her stunning heifer calf at side. That heifer calf was later selected Reserve Grand Champion Red Angus at the 2020 NAILE, Reserve Grand Champion Red Angus at the 2021 Cattlemen's Congress and was a many times breed champion at some of the largest jackpot shows in the Midwest. The potency of this cow family is legitimate. These WEBR Night Train 324 daughters are full sisters to UDE Pearle 224K, the 2023 NWSS Reserve Grand Champion Red Angus Heifer for the McCartan family.



92 AWR UDE PEARLE 156M

RAAA 5121757 • DOB 3/4/24 • TATTOO 156M • BREED A - 100% AR

AI BRED 6/5/25 TO WEBR SPARTAN J16 (RAAA: 4474053)
PE 6/30/25-8/9/25 TO WEBR SPARTAN J16 (RAAA: 4474053)
EST. DUE LATE MAY



EDG FINLEY 3121
Maternal Sister to Lots 91-99



AWR UDE PEARLE 18M



EDG FINLEY 3121
Maternal Sister to Lots 91-99



AWR UDE PEARLE 145M



UDE PEARLE 224K
Full Sister to Lots 91-96



AWR UDE PEARLE 197M

93 **AWR UDE PEARLE 18M**

RAAA 5121751 • DOB 1/11/24 • TATTOO 18M • BREED A - 100% AR
 AI BRED 6/7/25 TO WEBR SPARTAN J16 (RAAA: 4474053)
 PE 6/30/25-8/9/25 TO WEBR SPARTAN J16 (RAAA: 4474053)
 LIKELY SAFE AI. EST. DUE MID MARCH

94 **AWR UDE PEARLE 145M**

RAAA 5121755 • DOB 3/2/24 • TATTOO 145M • BREED A - 100% AR
 AI BRED 6/5/25 TO WEBR SPARTAN J16 (RAAA: 4474053)
 PE 6/30/25-8/9/25 TO WEBR SPARTAN J16 (RAAA: 4474053)
 EST. DUE MID APRIL

95 **AWR UDE PEARLE 197M**

RAAA 5121759 • DOB 3/13/24 • TATTOO 197M • BREED A - 100% AR
 AI BRED 6/6/25 TO WEBR SPARTAN J16 (RAAA: 4474053)
 PE 6/30/25-8/9/25 TO WEBR SPARTAN J16 (RAAA: 4474053)
 LIKELY SAFE AI. EST. DUE MID MARCH

96 **AWR UDE PEARLE 126M**

RAAA 5121753 • DOB 2/27/24 • TATTOO 126M • BREED A - 100% AR
 AI BRED 6/6/25 TO WEBR SPARTAN J16 (RAAA: 4474053)
 PE 6/30/25-8/9/25 TO WEBR SPARTAN J16 (RAAA: 4474053)
 EST. DUE MID MAY

lot 97

AWR UDE *pearle* 114M



97 AWR UDE PEARLE 114M

RAAA 5121767 • DOB 2/19/24 • TATTOO 114M • BREED A - 100% AR

SIX MILE JOHN WICK 882E
SIX MILE PARABELLUM 675G
 RED SIX MILE KURUBA 712A
 RMS BOWIE 0708
MNS PEARLE 3121
 PIE MISS GOODNIGHT 8003

PRO S	HB	GM	CE	BW	WW	YW	MILK	MARB	REA
67	37	30	9	1	69	109	23	0.14	0.09

AI BRED 6/6/25 TO WEBR SPARTAN J16 (RAAA: 4474053)
 PE 6/30/25-8/9/25 TO WEBR SPARTAN J16 (RAAA: 4474053)
 LIKELY SAFE AI. EST. DUE MID MARCH



LOTS 97-99

A new mating for the Red Angus division comes here with the synergy of the very popular, yet hard to source Six Mile Parabellum 675g and MNS Pearle 3121. These daughters are reliably deep ribbed, extra shapely about their rib cage, and come very low underlined, offering a tremendous look of balance and symmetry from the profile. This is the type and kind that we think it takes to add profit to a ranching scenario, not just for generating show heifers down the road. This trio of full sisters are just high-quality beef that do the fundamentals incredibly well and just come with some extra bells and whistles. Champion pedigree, industry accepted phenotype, this is the kind we could build the cowherd around.



UDE PEARLE 64K
 \$30,000 Maternal Sister to Lots 91-99



98 **AWR UDE PEARLE 83M**
 RAAA 5121761 • DOB 2/6/24 • TATTOO 83M • BREED A - 100% AR

SIX MILE JOHN WICK 882E
SIX MILE PARABELLUM 675G
 RED SIX MILE KURUBA 712A
 RMS BOWIE 0708
MNS PEARLE 3121
 PIE MISS GOODNIGHT 8003

PRO S	HB	GM	CE	BW	WW	YW	MILK	MARB	REA
67	37	30	9	1	69	109	23	0.14	0.09

AI BRED 6/5/25 TO WEBR SPARTAN J16 (RAAA: 4474053)
 PE 6/30/25-8/9/25 TO WEBR SPARTAN J16 (RAAA: 4474053)
 LIKELY SAFE AI. EST. DUE MID MARCH

99 **AWR UDE PEARLE 85M**
 RAAA 5121763 • DOB 2/7/24 • TATTOO 85M • BREED A - 100% AR

SIX MILE JOHN WICK 882E
SIX MILE PARABELLUM 675G
 RED SIX MILE KURUBA 712A
 RMS BOWIE 0708
MNS PEARLE 3121
 PIE MISS GOODNIGHT 8003

PRO S	HB	GM	CE	BW	WW	YW	MILK	MARB	REA
67	37	30	9	1	69	109	23	0.14	0.09

AI BRED 6/6/25 TO WEBR SPARTAN J16 (RAAA: 4474053)
 PE 6/30/25-8/9/25 TO WEBR SPARTAN J16 (RAAA: 4474053)
 LIKELY SAFE AI. EST. DUE MID MARCH



LOT 101

AWR Conley M.I.T.T.E.N.S. 4113 is a Mayfield son out of Claire Trennephol's NWSS Champion, PZC Dina o8 ET. Dina stems from the potent Fire Water x Impressive o641 combination that would be the source of more National Championships in the Charolais breed than any other mating. M.I.T.T.E.N.S has been a favorite of everyone on the ranch from early on, always being ahead of the pack from a power and stoutness standpoint. We love his combination of muscle and structural flexibility, and would certainly be a driving factor behind the excitement around the SVY Mayfield 30H influence.



PZC DINA O8 ET
Dam of Lots 101 & 102

101 **AWR CONLEY M.I.T.T.E.N.S. 4113**
AICA EM999787 • DOB 2/4/24 • TATTOO 4113 • BREED CHAROLAIS

CCC WC RESOURCE 417 P
SVY MAYFIELD 30H
SVY MIA 424B
TR MR FIRE WATER 5792RET
PZC DINA O8 ET
THOMAS MS IMPRESSIVE0641

CE	BW	WW	YW	MILK	RAE	MARB	TSI
8.35	-0.15	59.95	103.4	30.5	0.94	0.114	263.51

102 **AWR MR MAYFIELD DINA 4138 ET**
AICA EM1014400 • DOB 2/23/24 • TATTOO 4138 • BREED CHAROLAIS

CCC WC RESOURCE 417 P
SVY MAYFIELD 30H
SVY MIA 424B
TR MR FIRE WATER 5792RET
PZC DINA O8 ET
THOMAS MS IMPRESSIVE0641

CE	BW	WW	YW	MILK	RAE	MARB	TSI
8.35	-0.15	59.95	103.4	30.5	0.94	0.114	263.51



LOT 102

Here is the full brother to Lot 101, that stems from the SVY Mayfield 30H mating on the NWSS Champion, PZC Dina o8 ET. Coming with the maternal support of the legendary TR Mr Fire Water 5792RET x Thomas Ms Impressive o641 combination, it makes sense as to why you will find such legitimate phenotypic quality when you inspect AWR Mr Mayfield Dina 4138 ET in person. His pedigree truly reads of the most exciting individuals in the Charolais breed of the past two decades. While we see him injecting plenty of growth and performance to a set of feeder cattle, we think the daughters will be tremendous too!



SVY MAYFIELD 30H
Sire of Lots 101-105

LOT 103

AWR Mr Mayfield 4131 ET is a son of the Lindskov bred, LT Athena 1513 PLD. He sports a pedigree and genomic package that is geared around serious growth and payweight! Both sides of his pedigree are built around cattle that excel for adding pounds and profitability for cattlemen and women. You will find him to have experienced these extra gains in person too, as he stands ahead of the pack and is certainly an impressive specimen. If you're searching for a super complete and balanced herd bull that will add pounds when it comes to weaning time then mark 4131.



103 **AWR MR MAYFIELD 4131 ET**
 AICA EM1005488 • DOB 1/24/24 • TATTOO 4131 • BREED CHAROLAIS

CCC WC RESOURCE 417 P
SVY MAYFIELD 30H
 SVY MIA 424B
 LT AUTHORITY 7229 PLD
LT ATHENA 1513 PLD
 LT ATHENA 8736 P

CE	BW	WW	YW	MILK	RAE	MARB	TSI
4.5	1.1	71.2	118.1	23.55	0.935	0.119	262.63

104 **AWR MR MAYFIELD ALLEY 4128 ET**
 AICA EM1005487 • DOB 2/12/24 • TATTOO 4128 • BREED CHAROLAIS

CCC WC RESOURCE 417 P
SVY MAYFIELD 30H
 SVY MIA 424B
 SKW ANTONIUS 77X
JIL MISTY 123Z
 JIL CHEYENNE 36X

CE	BW	WW	YW	MILK	RAE	MARB	TSI
4.5	0.4	63.05	102.85	23	0.84	0.0685	254.95



LOT 104

AWR Mr Mayfield Alley 4128 ET is the PA clean option, and will supply all the phenotype necessary to raise a group of calves that attract a premium when it is their time to go through the sale barn. The sound structure and fault free design of these SVY Mayfield 30H sons make us excited to put their daughters into production down the road. He too is a maternal brother to the 49th Reserve National Champion Bull, ONL AWR Cool Cub 7C.



JIL MISTY 123Z
 Dam of Lot 104

LOT 105

This herd bull stems from the successful synergy of the trending, International Champion, SVY Mayfield 30H with the most versatile female in our battery, M6 Ms Patsy Bell 527 P. Not only does he excel on the hoof, but a glance into the genomics will reveal a set of predictions that are very favorable for growth and performance, meaning you can rely on his progeny to come to the weaning pen ahead of the cohort. We place serious value on the fact that he is a bull that many would deem geared for high production but yet he is still blessed with a great phenotype! He sports a top 6% of the breed WW figure.



M6 MS PATSY BELL 527 P
Dam of Lot 105

105	AWR MR MAYFIELD PATSY 4154 ET
AICA EM1005489 • DOB 1/13/24 • TATTOO 4154 • BREED CHAROLAIS	

CCC WC RESOURCE 417 P
SVY MAYFIELD 30H
 SVY MIA 424B
 M6 BELLS & WHISTLES 258 P
M6 MS PATSY BELL 527 P
 M6 MS FRESH PATSY 211 P

CE	BW	WW	YW	MILK	RAE	MARB	TSI
9.1	0.05	77.4	117.45	27.5	0.87	0.1445	268.61

106	AWR MR HEARTS GUCCI 4136
AICA M1005486 • DOB 3/26/24 • TATTOO 4136 • BREED CHAROLAIS	

SHF ABSOLUTE 1508
3ACES CRUSHING HEARTS G879
 TLF ISLA 43 ET
 TR PZC MR TURTON 0794 ET
AWR ZKCC GUCCI 021
 MISS KEY TOREE 163S

CE	BW	WW	YW	MILK	RAE	MARB	TSI
5.35	1.15	57.55	99.85	27.5	0.775	0.0105	245.53



LOT 106

AWR Mr Hearts Gucci 4136 is a long sided, big outlined stud that comes with advantages for punchiness and power. The way that this 3ACES Crushing Hearts G879 son combines explosive back shape, wide pin set and a shapely find quarter is impressive. If your cowherd is in need of an injection of roar power then take the time to come see 4136 on sale day because we think he is a prime candidate to satisfy your needs.



AWR ZKCC GUCCI 021
Dam of Lot 106



AWR MR
outsourc
patsy
4135

lot 107

107 AWR MR OUTSOURCE PATSY 4135

AICA M1003887 • DOB 3/18/24 • TATTOO 4135 • BREED CHAROLAIS

BOY OUTLIER 812 ET PLD
BIG CREEK OUTSOURCE 102 PLD
 BIG CREEK CARLY 814 P
 TR CAG CARBINE'S VISION 9700 ET
AWR PATSY BELL 227K
 AWR PATSY BELL 136

CE	BW	WW	YW	MILK	RAE	MARB	TSI
10.5	-2.65	67.65	112.725	23.625	0.855	-0.0338	252.91

AWR MR Outsourc Patsy 4135 stems from different genetic source than you may be accustom to from the Aces Wild Ranch, but what remains consistent is the foot quality, structural integrity and do ability of this herd bull prospect. This son of Big Creek Outsourc 102 PLD stems from a TR CAG Carbine's Vision 9700 ET daughter of the Patsy Bell lineage that stockmen from all walks have trusted for several seasons.

108 AWR MR 4205

AICA PENDING • DOB • TATTOO 4205 • BREED CHAROLAIS

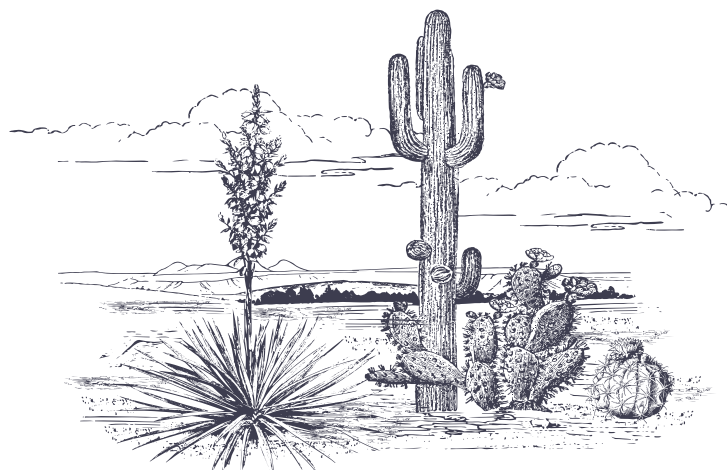
HCR EQUITY 3123 PLD
HC COMMISSIONER 8474
 HC SMOOTH BLEND 5167
 AWR CHAROLAIS
203
 AWR CHAROLAIS

CE	BW	WW	YW	MILK	RAE	MARB	TSI
13.2	-2.6	73	128	25	0.43	0.21	257

AWR Mr 4205 is the big and burly kind that is bound to add value to a set of feeder cattle through pure pounds and performance. He will add body length and width to a set of black hided, British blooded cows, and the resulting smoky calves will be the kind that feeder cattle buyers will drool over!



BIG CREEK OUTSOURCE 102 PLD
Sire of Lot 107





CONLEY SHEZA STAR D3
\$120,000 Dam of Lot 109



109

ACES MR EMINENCE STAR 3M

ASA PENDING • DOB • TATTOO 3M • BREED PB SM

WLE COPACETIC E02

R/P BCR EMINENCE H005

RP/MP BUILT TO LOVE A021

MR HOC BROKER

CONLEY SHEZA STAR D3

CONLEY SHEZA STAR Z32

CE	BW	WW	YW	MILK	MARB	REA	API	TI
9.9	2.1	72.9	103.1	13.9	0.15	0.74	116.3	72.8

A strong Simmental division is led by ACES Mr Eminence Star 3M, he is a solid option if you're hunting a well-balanced and fault free type of herd sire that is ready to get to work at any time. His pedigree reads of two very impressive specimens, his sire R/P BCR Eminence H005 has become a trending bull in the Simmental rings through his promotions at Buck Creek and RJ Cattle Company. Conley Sheza Star D3 is the \$120,000 high selling female from the Conley Cattle Simmental Dispersal. Maternal brothers to 3M include the \$100,000 Conley High Rise F3, a calving ease specialist that works in the Hartman Cattle Company breeding program in Nebraska.

110

ACES MR BUILT REMEDY 4156

ASA PENDING • DOB • TATTOO 4156 • BREED 1/2 SM 1/2 AN

BUSHS WING MAN 201

BUSHS CUSTOM BUILT 860

BUSHS DAKOTA BLACKBIRD 8937

SO REMEDY 7F

ACES MS REMEDY 245K

SWSN MISS EXECUTIVE ORDER 911

CE	BW	WW	YW	MILK	MARB	REA	API	TI
12.5	1.1	80.4	126.2	21.7	0.01	0.85	122.4	78.4

A half-blood herd sire prospect that will add some extra maternal to the calf crop, while still not sacrificing any growth potential or forgoing any structural integrity to the offspring. He is a well-rounded breeding piece that we feel has the structural kind and development to cover big country and get females bred up early.



111

ACES PAYROLL TRUE 4144

ASA PENDING • DOB • TATTOO 4144 • BREED 1/2 SM 1/2 AR

W/C BANKROLL 811D

SJF SMJ PAYROLL

SJF/TVSC CHARLIE

BMRA MR BIG SKY 088

BMRAMS WR TRUE 5003

WR MS HBRA 0077

CE	BW	WW	YW	MILK	MARB	REA	API	TI
9.7	0.6	69.3	96.4	18.2	0.19	0.76	118.6	74.9

The SJF SMJ Payroll combination with Red Angus cows has knocked it out of the park, as the sons combine power with predictability and long-term cowherd development. The power and mass inclusive in the lineage will prove to contribute to payweight and female retention, all around quality will be supplied by these two red hided studs.



112 **AWR MCCOY 4103 ET**

ASA 4408464 • DOB • TATTOO 4103 • BREED 1/2 SM 1/2 AR

W/C BANKROLL 811D
SJF SMJ PAYROLL
 SJF/TVSC CHARLIE
 ROJAS TR CHIVAS 17109
1BBC MISS SKY 103
 BMRA MS WR TRUE 5003

CE	BW	WW	YW	MILK	MARB	REA	API	TI
11	-0.4	66.4	98.3	21.4	0.04	0.33	104.7	66.2



This Percentage Simmental and Red Angus stud offers some impressive versatility! Being a son of the popular SJF SMJ Payroll sire brings some added structural integrity, performance and stoutness to this herd sire prospect. The added maternal that is supplied from his Rojas TR Chivas 17109 sired dam, only sweetens the deal in our mind.

113 **AWR MR SPARTAN 4217**

RAAA PENDING • DOB • TATTOO 4217 • BREED A - 100% AR

BIEBER SPARTAN E639
WEBR SPARTAN J16
 WEBR MS LASSIE 108G
 WEBR TC CARD SHARK 1015
AWR TRACY 601
 GT CITA 4060

PRO S	HB	GM	CE	BW	WW	YW	MILK	MARB	REA
101	71	31	13	-2.9	68	104	31	0.31	0.31



A purebred Red Angus that comes with a lot of punch and shape! He is a son of the impressive WEBR Spartan J16, and is backed by the powers of a WEBR TC Card Shark 1015 x GT Cita 4060 daughter, talk about aligning the best maternal genetics the Red Angus breed has to offer! He's that all around sire you may be in search of for siring those big steers at weaning and retain the daughters to reap the rewards when in production.

114 **AWR MR CUSTOM BUILT 4147**

AAA 21159549 • DOB 2/1/24 • TATTOO 4147 • BREED ANGUS

BUSHES WING MAN 201
BUSHES CUSTOM BUILT 860
 BUSHES DAKOTA BLACKBIRD 8937
 EXAR UNTAPPED 4710B
EXAR EVERGREEN 6108
 EXAR EVERGREEN 4059

CE	BW	WW	YW	MILK	CEM	REA	MARB	\$M	\$B	\$C
8	2.1	76	132	0.53	29	0.53	0.55	56	157	260



BUSHES CUSTOM BUILT 860
Sire of Lot 114

This lone ranger from the Angus division, AWR Mr Custom Built 4147 carries the weight for the team! Not only is he impressive in his build, but he comes with impressive predictions for curve bending growth from his very modest birthweight. He offers a have your cake and eat it too type of scenario, with the prospect of injecting calving ease and then supplying the genetic backing for impressive growth once the progeny get up and going. His dam was a part of our hand selected group of proven females from the heart of the Express Angus Ranches program we purchased a couple of years ago.

*I*NNOVATION
— AgMarketing, LLC —

*P.O. Box Z
De Soto, Kansas 66018*

