



Legends
OF THE
FLINT HILLS

SATURDAY, NOVEMBER 29, 2025 - 12 P.M. CDT

WESTMORELAND, KANSAS



WESTMORELAND, KANSAS

Scott & Kandi Schaaque
Shane & Melissa
Shilo, Jamie & Stockton



COURTLAND, KANSAS

Brock, Angie, Maddy, Gage & Kollins Hanel



SMITHVILLE, MISSOURI

Doyle, Kristen, Lucas & Bryce Leefers



WESTMORELAND, KANSAS

Troy, Nicole, Logan & Laney Marple



KANSAS CITY, KANSAS

Zach, Susie, Emma & Miles McCracken



MUSCOTAH, KANSAS

Ryan, Kayla, Brinley & Bryer Bodenhausen



ASHLAND, NEBRASKA

Les Vogler & Loren Vogler



RANDOLPH, KANSAS

Garren & Heidi Walrod



FRANKLIN, NEBRASKA

Jay, Kathy, Taylor, Michelle & Jordyn Falkenstine



at Winter Farm

HILLSBORO, KANSAS

Kevin, Amber, Elijah, Jeremiah & Tobias Winter



Welcome

The breeders involved in the Legends of the Flint Hills Sale proudly open their gates for you and are anxious to share some of the most productive, time tested genetics in North America. These females have been selected from a group of more than 300 bred heifers and represent programs who make their living in the cattle industry. Even though each operation may have a slightly different twist on genetics, the important traits of a modern cow herd such as longevity, reproductive performance, maternal influence and fleshing ability all remain a constant focus among these breeders. The reason these traits are such a focus is because of the necessity of these females to thrive and reproduce in the native grass country where they were raised.

As ranchers, we are blessed to be a part of historic times. All signals suggest these bright days will continue and more history is yet to be made. The build back of the American cow herd is slower than projected and consumers continue to show their willingness to purchase a high-quality product that is safe, wholesome and nutritious. As stockmen, we will all enjoy this journey and continue to raise the bar for a high quality, sustainable product.

We are confident these females will work for you because their heritage has worked efficiently for the programs in which they were raised. We sincerely appreciate your interest in the "Legends" program. Please feel free to reach out to any of the breeders that represent this offering.

The Scott Schaake Family





The Legends of the Flint Hills group are eager to welcome you to this year's event. They have all put their best foot forward to bring a set of cattle that not only run deep in quality but are rich in pedigree and industry merit. We are certain that you will agree as you turn the pages of this sale book.

It's no secret that the cow/calf operator has been in the driver's seat for just over two years. Those with a progressive mindset have invested in sire power, ensuring their programs get the genetic improvement needed to stay ahead in the business. However, the investment in rebuilding the U.S. cow herd has not been widespread, understandably so, given where the market value of heifer calves currently stands. Now is the time for all cattlemen and women to focus on improving the female base. For the first time in our lifetime, the seed stock and commercial marketplaces may be more aligned than we realize, so if you're a commercial producer, why wouldn't you consider registered females instead of commercial replacements if those values aren't that far apart? The logic is simple, especially when one considers that you're investing in a product that has actual recorded data that goes into a system with thousands of other cattle to be cross compared amongst the breed's population.

This offering includes families that earn their living within the beef segment of animal agriculture. Doctors, lawyers, or investment bankers didn't raise these cattle for tax purposes, but true stockmen, like yourself, did produce this offering. The breeders behind the offering would be nutritionists, bovine reproductive specialists, veterinarians, or vet assistants, order buyers for all classes of cattle, or diversified production agriculturalists that forge a living to support their families and operations, as you do for yours. Each breeder's goal for this annual event is to breed cattle that are profitable and predictable for their customer base within personal program lines. The group desires nothing more than great long-term relationships and for their customer base to grow through positive word of mouth. Customer service will be selfless, and deals made with a handshake will stand the test of time.

As the sale management team, we are highly impressed with the excellent group of females these great plains-based operations have assembled for your evaluation and appraisal on November 29, 2025. We are confident in the quality of phenotype and genetics supporting each lot throughout the offering and believe in the service sire choices made by each entity. These females are bred to work and bring profitability to the operations they will serve after sale day. If you need any additional information about the offering or assistance with purchasing cattle at this event, do not hesitate to contact any member of the Innovation AgMarketing team. Thank you for your interest and your valuable time in considering this quality offering.

Enjoy the cattle,

Graham Blagg

Jered Shipman

Tim Anderson

Sale Day

INFORMATION

FRIDAY, NOVEMBER 28, 2025

3:00 PM Viewing of Cattle Begins

7:00 PM Appetizers & Cocktails

SATURDAY, NOVEMBER 29, 2025

9:00 AM Viewing of Cattle Begins

11:00 AM Complimentary Lunch

12:00 PM Legends of the Flint Hills Production Sale

SALE LOCATION

Schaake Farms Sale Facility

9853 Myers Valley Road, Westmoreland, KS 66549

SALE DAY PHONES

Scott Schaake: 785-456-4949

Shane Schaake: 785-456-5014

Shilo Schaake: 785-844-2881

Ryan Bodenhausen: 785-221-3284

Jay Falkenstine: 406-845-2684

Brock Hanel, DVM: 785-275-1060

Troy Marple: 785-250-0522

Logan Marple: 785-250-7367

Zach McCracken: 620-384-6176

Les Vogler: 402-450-2340

Loren Vogler: 402-432-9070

Garren Walrod: 785-565-1221

Kevin Winter: 620-382-5563

Wyatt Durst, CCI.Live: 785-541-0904

AUCTIONEER

Garren Walrod: 785-565-1221

SALE MANAGEMENT

Innovation AgMarketing, LLC

Graham Blagg: 530-913-6418

Tim Anderson: 605-682-9343

Jered Shipman: 806-983-7226

SALE STAFF

Guy Peverley, The Stock Exchange: 785-456-4390

Stephen Russell, Kansas Livestock Association: 785-458-2650

Craig Talkington, Special Assignment: 785-623-1789

CATALOG DESIGN

Jeana Hurlbut: 605-880-7601

PHOTOGRAPHY & VIDEOS

Focus Marketing Group

Magen Tol: 320-305-3545

SUPPLEMENTAL INFORMATION

A supplement sheet will be provided the week of the sale with updated breeding information, corrections, and addition information. All announcements made from the auction block will take precedence over printed materials associated with this sale.

LIABILITY

All persons who attend the sale do so at their own risk, legal or otherwise, for their safety or for behavior of the animals. The owners, sale management firm, and the sale staff assume no liability for property loss or any accident that may occur.

ONLINE BIDDING + VIDEOS

The sale will be broadcasted to watch and place your live bids online. Videos of the sale cattle will be available at CCI.Live.

TRUCKING

Free delivery to Kansas buyers and we are willing to help out-of-state buyers with the most economical trucking possible.

AIR TRAVEL

We are located 30 minutes from Manhattan Regional Airport (MHK), and two hours from Kansas City International Airport (MCI).

DIRECTIONS TO THE SALE

FROM MANHATTAN, KS Take US Highway 24 (W) and turn right onto KS Highway 13 (N) across Tuttle Creek Dam. Stay on Highway 13 for approximately 6.8 miles. Turn right onto Myers Valley Road. Go 2.7 miles and the sale site will be on your left (N).

FROM WAMEGO, KS Take US Highway 99 (N) for approximately 4.7 miles and turn left (W) onto Louisville Road. Stay on Louisville Road for approximately 7.9 miles and turn right (N) onto Flush Road. Stay on Flush Road for about 2.1 miles, then turn left (W) onto Myers Valley Road and in 3 miles, the sale site will be on your right (N).

TERMS & CONDITIONS

The terms of the sale are cash or good check payable to Innovation AgMarketing, LLC at the conclusion of the auction. Please contact Graham Blagg at (530) 913-6418 for Wiring Instructions or ACH Payment Information. Any person not completing payment will be pursued legally. The auction and registration will be videotaped. All cattle sell under the suggested terms & conditions of their respective breed association. All sales are final once the auctioneer says "SOLD".



Watch the Sale Live
www.CCI.Live - Broadcasting Live
(405) 400-9505 schedule@cci.live
Over 35 years in livestock marketing!



Welcome
TO THE SALE





R/C SFI CREEDENCE 417J

2023 Cattlemen's Congress Grand Champion Purebred Simmental Bull
Sire of Lot 1



KWIN REV SWEETY 611D

2017 KS State Fair Reserve Supreme Champion Junior Breeding Heifer
Dam of Lot 1 & Maternal Sister to Lot 2

Lot **1**

Lot **1**

SFI MISS MISSION ACCOMPLISHED

PB SM • 4/9/24 • ASA:4401573 • TATTOO: M43 • HOMO POLLED • HOMO BLACK

JSUL SOMETHING ABOUT MARY 8421

WLE/LWSC REVOLUTION A409

R/C SFI CREEDENCE 417J



KWIN REV SWEETY 611D

SFI LOVE ME LATER A9X

BWL/SS/HS SWEET LOOKIN

CE	BW	WW	YW	ADG	MCE	MILK	MWW	STAY	DOC	CW	YG	MARB	BF	REA	API	TI
8.8	3.5	79.9	115.2	0.22	1.1	13.8	53.8	12.9	11.1	28.1	-0.38	0.09	-0.084	0.78	117	75.4

OFFERED BY SCHAAKE FARMS INC

• If pedigrees could only read and write! This unique beast compiles not only the best females to claim the SFI prefix but also breed greats such as JBSF Proud Mary and HS Sweet Gem X141N.

• The power, the mass, and substance that is owned by this one's phenotype is certainly noticeable, but it is her flexibility and cow power within that will carry the mating to the popular WHF Point Proven H45.

• The dam of M43 is KWIN REV Sweety 611D, the 2017 Kansas State Fair Reserve Supreme Champion Junior Breeding Heifer. The sire of M43 is R/C SFI Creedence 417J, the 2023 Cattlemen's Congress Grand Champion Purebred Simmental Bull. A truly unique pedigree that is destined to generate.

• We expect great things to come for whoever has the winning bid.

AI BRED 4/19/25 TO TJ SANDHILLS SWAG 816L (ASA: 4217005)

SAFE AI - EST. DUE 1/26/26

Lot **2**

KWIN FAMILY SWEET M122

1/2 SM 1/2 AN • 1/18/24 • ASA:4569364 • TATTOO: M122 • POLLED • BLACK

SILVEIRAS STYLE 9303

B C LOOKOUT 7024

W/C STYLE 69E "FAMILY TRADITION"



BWL/SS/HS SWEET LOOKIN

MISS WERNING KP 8543U

HS SWEET GEM X141N

CE	BW	WW	YW	ADG	MCE	MILK	MWW	STAY	DOC	CW	YG	MARB	BF	REA	API	TI
12.2	0.2	64	96.7	0.2	3.7	16.8	49	13.8	13.1	20.5	-0.16	0.28	-0.028	0.42	119.8	69.6

OFFERED BY WINTER FARM

• We continue in rhythm with another descendant of HS Sweet Gem X141. The HS prefix represents one of the salt of the earth programs of Minnesota. Ryan Hecksell is extremely passionate about the Simmental business. He has been breeding these cattle for three decades with emphasis on phenotype, center body shape, genuine dimension, and skeletal integrity. He has built his program with utmost selection pressure dedicated to traits that affect longevity and performance as well. Truly one of the great breeders of Simmental cattle in the business.

• This direct daughter of the Werning Cattle Company SimAngus phenom, W/C Style 69E "Family Tradition", has the stamp of approval for look, balance, and sheer quality. A double bred half-blood female with the credentials to be a dollar generating factor for any program!

AI BRED 4/3/25 TO GCC NIGHT OWL 3104L (ASA: 4284092)

SAFE AI - EST. DUE 1/11/26



Lot 3

Lot 3

SFI DC NIGHT WATCH M250

3/4 SM 1/4 AN • 4/12/24 • ASA:4396198 • TATTOO: M250 • HOMO POLLED • BLACK

CCR ANCHOR 9071B

B C LOOKOUT 7024

W/C NIGHT WATCH 84E

SFI MISS PIG TAILS C3

MISS WERNING KP 8543U

SFI MISS BETTY LOU

CE	BW	WW	YW	ADG	MCE	MILK	MWW	STAY	DOC	CW	YG	MARB	BF	REA	API	TI
13.6	-0.3	64.7	94.5	0.19	4.3	31	63.3	15.5	13.2	12.2	-0.26	0.24	-0.04	0.55	124.6	71.8

OFFERED BY SCHAAKE FARMS INC

• A three-dimensional, robustly designed daughter of the proven, long-time use sire, W/C Night Watch 84E. The sire group has stood the test of time with proven calving merit and maternal function.

• As the industry evolves, cattle designed as M250 will always have their place in the production cycle. Big centered, forage efficient, good milking stock with longevity in structure and build will never go out of style.

AI BRED 4/23/25 TO WINC ALL RIGHT 213K (ASA: 4100635)

SAFE AI - EST. DUE 1/30/26



WINC ALL RIGHT 213K

\$147,500 service sire to several females throughout the offering!



W/C NIGHT WATCH 84E

\$142,000 Sire of Lot 3



Lot 4



Lot 5



ROSE MC ENCORE 0463
\$240,000 Valued Sire of Lot 4



M4 MS FIRE & ICE Y85L
Maternal Sister to Dam of Lot 4 & Maternal Sister to Lot 5



SFI BETTY SUE Y85T
Maternal Granddam of Lot 4 & Dam of Lot 5

Lot 4

M4 MS TAILOR-MADE F85M

1/2 SM 1/2 AN • 3/16/24 • ASA:4415886 • TATTOO: F85M • HOMO POLLED • HETERO BLACK

SSF ON POINT 4028

W/C EXECUTIVE ORDER 8543B

ROSE MC ENCORE 0463

BURNS ELBA 1454



M4 MS MADE TO ORDER F85T

SFI BETTY SUE Y85T

CE	BW	WW	YW	ADG	MCE	MILK	MWW	STAY	DOC	CW	YG	MARB	BF	REA	API	TI
12.2	-0.9	69.4	103	0.21	6.4	18.4	53.3	16.7	10.7	27.6	-0.13	0.07	-0.016	0.53	117.7	68.9

OFFERED BY M4 SIMMENTALS

- Symmetrical balance and quality with utmost skeletal integrity is found in this awesome breeding piece from the M4 Simmentals breeding program.
- SFI Betty Lou's influence continues to prove the level of diversity the old school genetics can offer. We understand that EPDs for cowboy approved proven cow families and phenotype are not available, but we still can appreciate the obvious by what our stockmen's eyes can tell us.
- A donor candidate that is appropriately named and built to generate.

AI BRED 5/11/25 TO LCDR PATRIOT 8K (ASA: 4113651)

PE 5/19/25-7/11/25 TO M4/3R REGIME 475M (ASA: 4415910)

SAFE AI WITH HEIFER CALF PREGNANCY - EST. DUE 2/17/26

Lot 5

MID-AM MS TIMELESS 7M

1/2 SM 1/2 AN • 1/6/24 • ASA:4403218 • TATTOO: 7M • HOMO POLLED • HOMO BLACK

O C C LEGEND 616L

TNT TOP GUN R244

B C LOOKOUT 7024

GIBBET HILL MIGNONNE E37



SFI BETTY SUE Y85T

SFI MISS BETTY LOU

CE	BW	WW	YW	ADG	MCE	MILK	MWW	STAY	DOC	CW	YG	MARB	BF	REA	API	TI
11.3	0.4	68.5	110.7	0.26	3.1	18.9	53.4	18.6	9.3	27.8	-0.09	0.09	-0.017	0.39	120.4	67.6

OFFERED BY MID-AM GENETICS

- SFI Betty Sue Y85T, the produce of SFI Betty Lou, has been an integral part of the SFI program as well as for those who invested in her potent prowess over the past several years.
- Mid-Am Ms Timeless 7M represents a mating that is proven from multiple sisters prior to her existence. The genetic blend contains the most proven genetics from two of the industry's greatest cattlemen. Bill Conley built his legacy on quality cattle that were forage efficient with muscle, look, and skeletal integrity. The SFI product was built with a focus on build, shape, and power that could withstand the pressures of the industry demand for performance and maternal quality. When blended, it does not require a piece of paper or a geneticist to tell the story of what lies ahead.
- This breeding piece will be productive and profitable for any operation!

AI BRED 4/21/25 TO TJ SANDHILLS SWAG 816L (ASA: 4217005)

PE 5/1/25-7/15/25 TO G-S GAME ON COWBOY L10 (ASA: 4247152)

SAFE AI WITH BULL CALF PREGNANCY - EST. DUE 1/28/26



Lot 6

Lot 6

MCCR MISS CHANGE THE BANK M14

PB SM • 1/20/24 • ASA:4472621 • TATT00: M14 • HOMO POLLED • BLACK

WLE COPACETIC E02

W/C BANKROLL 811D

HOLTkamp CLAC CHANGE IS COMING



MCCR RUBY K51

MISS SUGAR SHAKE 84D

SFI NOW U SEE ME F8C

CE	BW	VW	YW	ADG	MCE	MILK	MWW	STAY	DOC	CW	YG	MARB	BF	REA	API	TI
10.9	2.4	82.7	122.2	0.25	5.4	15.4	56.7	10.7	3.1	27.5	-0.4	0.09	-0.089	0.8	119.4	79.3

OFFERED BY MCCrackEN LIVESTOCK

- The team at McCracken Livestock maintains a detailed and critical eye for the good stuff.
- M14 is an awesome representation of what the young family is capable of producing and what they are passionate about.
- This creature is so feminine in her features yet offers a tremendous amount of center body mass and an impeccable underline, all while maintaining strength of spine and a level pin set.
- MCCrMiss Change The Bank M14 is supported by the famed SFI Betty Sue Y85T matron. In fact, the third-generation dam of M14 is a FULL SISTER to Mid-Am Ms Timeless 7M, the female that sells as Lot 5.
- She is a Purebred female that is bred and built to produce those high-end females and those life changing herd sires. Invest with confidence!

AI BRED 3/30/25 TO GCC NIGHT OWL 3104L (ASA: 4284092)

SAFE AI WITH HEIFER CALF PREGNANCY - EST. DUE 1/7/26



SFI NOW U SEE ME F8C
Maternal Granddam of Lot 6

Lot 6



STCC TECUMSEH 058J
\$620,000 Sire of Lot 7



SFI MISS EMBRACE H3C
Maternal Sister to Lot 7



SFI MISS SEE ME NOW
Dam of Lot 7 & Maternal Granddam of Lot 8

Lot 7

SFI MISS NOTHING BUT LOVE M3C

3/4 SM 1/4 AN • 1/10/24 • ASA:4396188 • TATT00: M3C • POLLED • BLACK

VCL FORESIGHT

PVF INSIGHT 0129

STCC TECUMSEH 058J

SFI MISS SEE ME NOW

HF SERENA

SFI KANDI'S BEST U03M

CE	BW	WW	YW	ADG	MCE	MILK	MWW	STAY	DOC	CW	YG	MARB	BF	REA	API	TI
8.2	2.7	73.1	108.5	0.22	3.5	23.9	60.5	15.9	7.2	39.3	-0.39	0.14	-0.058	1.14	111.6	69.9

OFFERED BY SCHAAKE FARMS INC

- STCC Tecumseh 058J still puts several cattle at the front of the line for performance and yield, with added look and superior balance.
- M3C offers substantial power and brood cow merit to the eye as she is genuine from the surface up with a big pin set, a bold upper rib shape, and a productive look.
- We believe it is also important to recognize that this female ranks in the top 4% for REA, allowing breeding flexibility to potentially produce the breed's next go-to herd sire prospect.

AI BRED 5/12/25 TO SO REMEDY 7F (ASA: 3419044)

SAFE AI WITH HEIFER CALF PREGNANCY - EST. DUE 2/18/26

Lot 8

WLF MISS J-LO M48

PB SM • 4/8/24 • ASA:4409617 • TATT00: M48 • HOMO POLLED • HOMO BLACK

WLE COPACETIC E02

W/C LOADED UP 1119Y

ROCKING P PRIVATE STOCK H010

SFI MISS J-LO G3C

RP/MP BUILT TO LOVE A021

SFI MISS SEE ME NOW

CE	BW	WW	YW	ADG	MCE	MILK	MWW	STAY	DOC	CW	YG	MARB	BF	REA	API	TI
12.7	1.5	78.2	118.9	0.25	5.6	16.4	55.5	11.7	8.6	32.8	-0.43	0.05	-0.078	1.03	121.8	77.2

OFFERED BY LEEFERS FAMILY

- The Leefer's Family brought another very good set of stock to town for the Legends of the Flint Hills offering!
- This deep sided Purebred by the many times champion Rocking P Private Stock H010 stems from the influence of W/C Loaded Up 1119Y and one of the best SimAngus females bred in the SFI program, SFI Miss Me Now.
- Substance, depth, and skeletal integrity in one complete package with the service to the robustly constructed \$147,500 WINC All Right 213K is the ideal recipe for investment success!

AI BRED 5/4/25 TO WINC ALL RIGHT 213K (ASA: 4100635)

PE 5/8/25-6/1/25 TO KSU STUNNER 0159 ET (AAA:19874934) & 6/1/25-9/1/25 TO WLF TANNERITE M413 (ASA: 4521824)

SAFE AI - EST. DUE 2/11/26



SFI MISS CUPID
Maternal Granddam of Lot 10



SFI MISS TURNIN HEADS
Dam of Lot 10

Lot 9

SFI MISS M78G

1/2 SM 1/2 AN • 3/8/24 • ASA:PENDING • TATTOO: M78G • POLLED • BLACK

SCC SCH 24 KARAT 838

W/C RELENTLESS 32C

STAG GOOD TIMES 201 ET



SFI MISS HUSH THE CROWD 678B

SCC SCH PHYLLIS 6104

SFI MISS STEAL N HEARTS

CE	BW	WW	YW	ADG	MCE	MILK	MWW	STAY	DOC	CW	YG	MARB	BF	REA	API	TI
12.1	1.6	73.1	104.9	0.2	5.3	23.4	59.8	11.2	7.5	29.3	-0.23	0.21	-0.02	0.8	110.8	71.2

OFFERED BY SCHAAKE FARMS INC

• A female that may not have given us the best look in the picture pen, but one that the SFI team has been high on throughout the summer! This one kept coming along at every turn and has evolved into one of the best phenotype driven SimAngus females the firm has built.

• We are certain that anyone in their right mind will admire the length and build of this female. Her head shape, neck design, and front skeleton blend seamlessly with her center body as she maintains impeccable quality throughout her lines. When the videos hit the screen of your preferred device, you will also notice how collected this female is on the move with no deviation for sheer quality.

AI BRED 4/19/25 TO SO REMEDY 7F (ASA: 3419044)

SAFE AI - EST. DUE 1/26/26

Lot 10

HWGW MISS COPE M15-F13

PB SM • 2/11/24 • ASA:4559951 • TATTOO: M15 • HOMO POLLED • BLACK

HPF QUANTUM LEAP Z952

KMJ REVENUE

WLE COPACETIC E02



SFI MISS TURNIN HEADS

CMFM JOY 02ZB

SFI MISS CUPID

CE	BW	WW	YW	ADG	MCE	MILK	MWW	STAY	DOC	CW	YG	MARB	BF	REA	API	TI
10.5	2.4	74	109.4	0.22	3.8	19.2	56.1	11.9	2.3	28.2	-0.42	0.14	-0.08	0.92	120.3	75.6

OFFERED BY WALROD CATTLE COMPANY

• Multiple full brothers and sisters to this female have highlighted the sale offerings at both the Gold Bullion and the Schaaque Farms Online Female Sale ventures. The quality and balance derived from this genetic blend is like no other in the history of the program!

• The elegance and refinement found within is backed by a donor dam that was simply flawless in her silhouette, as she withstood the toughest of the competition during her exhibition tenure.

• This bred female is big at the surface, dominant in her skeletal integrity, and extremely high quality in her presence. The mating to WINC All Right 213K will be just what the doctor ordered! The 213K sire group continues to come with an abundance of center body, muscle shape, and flexibility.

AI BRED 3/31/25 TO WINC ALL RIGHT 213K (ASA: 4100635)

SAFE AI WITH BULL CALF PREGNANCY - EST. DUE 1/7/26



Lot 11



HANELS MISS AMERICA U814
Maternal Granddam of Lots 11 & 12



Lot 12



SFI MISS ME O MY
Dam of Lot 12 & Maternal Granddam of Lots 13 & 14

Lot 11

RAINS MISS MILLIE M424

PB SM • 1/13/24 • ASA:4439025 • TATT00: M424 • POLLED • BLACK

HTP/SVF DURACELL T52

THSF LOVER BOY B33

RP/MP RIGHT TO LOVE 015U

JM OL STEEL Y50

X

MMM RAINS MISS ME O MY H100

HANELS MISS AMERICA U814

CE	BW	WW	YW	ADG	MCE	MILK	MWW	STAY	DOC	CW	YG	MARB	BF	REA	API	TI
14.7	-1	70.9	1078	0.23	7.5	27	62.1	12.8	12.9	27.6	-0.22	0.14	-0.048	0.54	132	78.4

OFFERED BY WALROD CATTLE COMPANY

A picture that is true to lineage, as her pedigree would encompass breed legends known for making brood cows with substantial body shape, true skeletal width, with utmost skeletal quality and longevity.

- Big footed, desirable boned, square hiped, wide backed, and tremendously deep sided best describes what this one legitimately is.
- THSF Lover Boy B33 has stood the pressures of time and is more consistent in his breeding ventures than his full brother, with more champions to his credit as well. The bottom side is influenced by one of the underutilized close relatives to the timeless MR HOC Broker, JM Ol Steel Y50. For those who are interested in building a productive cowherd with proven genetics, Y50 will only enhance the maternal value of any program without sacrificing muscle or center body.
- Buy with confidence in one that is wrapped in proven cow families of longevity!

AI BRED 3/31/25 TO GCC NIGHT OWL 3104L (ASA: 4284092)

SAFE AI WITH BULL CALF PREGNANCY - EST. DUE 1/7/26

Lot 12

HWGW MISS RL MG9-B7

PB SM • 2/15/24 • ASA:4555023 • TATT00: MG9 • POLLED • BLACK

YARDLEY UTAH Y361

W/C RELENTLESS 32C

MISS WERNING KP 8543U

JM OL STEEL Y50

X

SFI MISS ME O MY

HANELS MISS AMERICA U814

CE	BW	WW	YW	ADG	MCE	MILK	MWW	STAY	DOC	CW	YG	MARB	BF	REA	API	TI
171	-1	59	79.1	0.13	7.6	23.9	53.1	12.2	6.4	20.8	-0.27	0.19	-0.03	0.77	130	72

OFFERED BY WALROD CATTLE COMPANY

Hanel's Miss America U814 has had a vital role in the building stages of this offering, the Gold Bullion, and the Hanel's Black Simmental breeding program. She is a dam of consistency, power, and performance, and her daughters maintain those truths as they get dispersed across the country.

- We are sure that many will gravitate towards this daughter of the proven W/C Relentless 32C as they recognize the presence and kind displayed within her flawless profile. She too, goes with discernment and ease across the pen, connecting to the surface with a big foot and depth of heel.
- She is one that ranks among the top 4% for CE and the top 15% for BW, making her suitable for herd sire generation when it comes to phenotype and calving merit. Her pedigree and kind are right for the business.

AI BRED 3/31/25 TO WINC ALL RIGHT 213K (ASA: 4100635)

SAFE AI WITH HEIFER CALF PREGNANCY - EST. DUE 1/7/26



SFI IM A FLIRT F16
2020 FWSS Grand Champion Purebred Simmental Heifer
Dam of Lot 13



Lot 13



SFI MISS SOMETHING SPECIAL H20
Dam of Lot 14



Lot 14

Lot 13

WLF MISS LOLA M47 ET

PB SM • 4/7/24 • ASA:4409618 • TATT00: M47 • POLLED • BLACK

SVF STEEL FORCE S701

MR HOC BROKER

JM BF H25

LLSF PAYS TO BELIEVE ZU194

SFI IM A FLIRT F16

SFI MISS ME O MY

CE	BW	WW	YW	ADG	MCE	MILK	MWW	STAY	DOC	CW	YG	MARB	BF	REA	API	TI
9.3	2.8	76.7	113	0.23	4.6	22.3	60.4	9.2	3.4	32.6	-0.33	-0.05	-0.068	0.79	102.7	71.6

OFFERED BY LEEFERS FAMILY

- The legacy of U814 continues as we introduce another member of her elite and dominating prowess.
- WLF Miss Lola M47 comes with a resume that features two of the most influential sires in the business. Sires that continue to surface in pedigrees when they represent matings that were made a decade plus ago. MR HOC Broker and LLSF Pays To Believe ZU194 represent cow families that were bred in the late 1990s, which is a testament to the quality and longevity that Sim-Influenced cattle have to offer the business in general!
- A striking baldy that has the build, substance, and shape to meet most prerequisites for investment status. Make sure to look her up when the videos get posted!

AI BRED 3/29/25 TO OMF EPIC E27 (ASA: 3317371)

PE 5/8/25-6/1/25 TO KSU STUNNER 0159 ET (AAA:19874934) & 6/1/25-9/1/25 TO

WLF TANNERITE M413 (ASA: 4521824)

SAFE AI - EST. DUE 1/6/26

Lot 14

WLF SOMETHING SWEET M229

PB SM • 2/29/24 • ASA:4409616 • TATT00: M229 • POLLED • BLACK

WLE COPACETIC E02

ROCKING P PRIVATE STOCK H010

RP/MP BUILT TO LOVE A021

GEFF COUNTY O

SFI MISS SOMETHING SPECIAL H20

SFI MISS ME O MY

CE	BW	WW	YW	ADG	MCE	MILK	MWW	STAY	DOC	CW	YG	MARB	BF	REA	API	TI
12.8	0.2	71.7	107.2	0.22	5.4	15.6	51.2	10.6	6.2	22.7	-0.33	0.18	-0.068	0.69	125.5	77.3

OFFERED BY LEEFERS FAMILY

- Elegant and refined best describe the granddaughter of SFI Miss Me Oh My!
- Wow! What an amazing silhouette and pen presence the daughter of Rocking P Private Stock H010 maintains.
- She is so uniquely chiseled about her front third, deep in her side, near perfect in her underline, and comes with the correct set to both her knee and hock.
- Her mating to OMF Epic E27 will be the ideal introduction to calving ease with proven power.

AI BRED 5/27/25 TO OMF EPIC E27 (ASA: 3317371)

PE 6/10/25-9/1/25 TO WLF TANNERITE M413 (ASA: 4521824)

SAFE AI - EST. DUE 3/6/26



Lot 15



ROCKING P PRIVATE STOCK H010
2021 NAILE Grand Champion Purebred Simmental Bull
Sire of Lots 14-16



KWIN RELNTLES RILEY E913
Dam of Lot 15
Maternal Grandam of Lot 16

Lot 15

SFI MISS SENDING ROSES M913

PB SM • 2/24/24 • ASA:4396192 • TATTOO: M913 • POLLED • HOMO BLACK

WLE COPACETIC E02

W/C RELNTLESS 32C

ROCKING P PRIVATE STOCK H010

RP/MP BUILT TO LOVE A021



KWIN RELNTLES RILEY E913

KWIN BROKER 4901

CE	BW	WW	YW	ADG	MCE	MILK	MWW	STAY	DOC	CW	YG	MARB	BF	REA	API	TI
12.8	1.4	76.3	114.3	0.24	5.3	15.7	54.1	10.4	5.7	22.5	-0.31	0.23	-0.06	0.67	127.7	80

OFFERED BY SCHAAKE FARMS INC

- A big centered brood cow prospect with hip and substance!
- This direct daughter of H010 is further supported by the proven genetic balance of W/C Relentless 32C and the G.O.A.T., MR HOC Broker.
- If you prefer your stock with a shot more size, density, and power of bone and foot, then look no further than SFI Miss Sending Roses M913.

AI BRED 4/18/25 TO SFI CHARGE AHEAD K26 (ASA: 4113346)

SAFE AI - EST. DUE 1/25/26

Lot 16

SFI MISS PEACHES M91K

PB SM • 1/20/24 • ASA:4396230 • TATTOO: M91K • POLLED • HOMO BLACK

WLE COPACETIC E02

LLSF PAYS TO BELIEVE ZU194

ROCKING P PRIVATE STOCK H010

RP/MP BUILT TO LOVE A021



SFI MISS DIAMOND EYES K913

KWIN RELNTLES RILEY E913

CE	BW	WW	YW	ADG	MCE	MILK	MWW	STAY	DOC	CW	YG	MARB	BF	REA	API	TI
10.1	3.2	82.2	122.9	0.25	4.3	14.1	55.3	10.5	7.6	29.5	-0.29	0.28	-0.057	0.73	126.2	82

OFFERED BY SCHAAKE FARMS INC

- From the same cow family as M913, KWIN Relentless Riley E913, this female comes with another dose of the proven goods with the influence of LLSF Pays To Believe ZU194 in combination with W/C Relentless 32C and MR HOC Broker.
- We think many will be excited about the onboard service to the Werning Cattle Company low birth weight sire of choice, TJ Sandhills Swag 816L.
- The quality and frequency of opportunity never cease at The Legends of the Flint Hills.

AI BRED 4/24/25 TO TJ SANDHILLS SWAG 816L (ASA: 4217005)

SAFE AI - EST. DUE 1/31/26



UG HEARTBREAKER 5004D ET
Dam of Lots 17 & 18



Lot 17



MCCR MISS STYLES H03
Maternal Sister to Lots 17 & 18



Lot 18

Lot 17

KWIN RUTHLESS HEART M416

PB SM • 2/28/24 • ASA:4569372 • TATT00: M416 • POLLED • BLACK

W/C RELENTLESS 32C

LLSF PAYS TO BELIEVE ZU194

WOOD RUTHLESS



UG HEARTBREAKER 5004D ET

DMCC DESTINY 22D

SIMME VALLEY ZIPPER

CE	BW	WW	YW	ADG	MCE	MILK	MWW	STAY	DOC	CW	YG	MARB	BF	REA	API	TI
5.9	2.3	74.1	109.8	0.22	2.4	20.7	57.6	11.1	10.9	28.5	-0.38	0.07	-0.07	0.86	107.1	71.8

OFFERED BY WINTER FARM

- Here is one of the good ones from Winter Farm! An unforgettable color pattern, quality in kind, and a build that equate to a recipe for ultimate success.
- Kevin has always done a fantastic job of keeping his stock stout and bold in their center body construction with added muscle and genuine base width.
- This striking mot-faced breeding gem blends all that is great in the business with an elegant and perfectly tied front third and skeletal flexibility that is unrivaled.
- The service to WINC All Right 213K should be a profitable acquisition in its own right!

AI BRED 5/19/25 TO WINC ALL RIGHT 213K (ASA: 4100635)
SAFE AI WITH HEIFER CALF PREGNANCY - EST. DUE 2/25/26

Lot 18

MCCR RELENTLESS HEART M01

PB SM • 1/20/24 • ASA:4472609 • TATT00: M01 • POLLED • BLACK

YARDLEY UTAH Y361

LLSF PAYS TO BELIEVE ZU194

W/C RELENTLESS 32C



UG HEARTBREAKER 5004D ET

MISS WERNING KP 8543U

SIMME VALLEY ZIPPER

CE	BW	WW	YW	ADG	MCE	MILK	MWW	STAY	DOC	CW	YG	MARB	BF	REA	API	TI
7.2	2.8	73.9	104	0.19	3	19	55.9	9.8	9.8	30.1	-0.37	0.16	-0.065	0.92	110.9	74.4

OFFERED BY MCCracken LIVESTOCK

- Another high profile, high caliber donor prospect from the McCracken Livestock firm.
- The extra size, substance, and power this creature has to offer are essential to stay in front of the ever-changing curve within the industry!
- She is undoubtedly true to genetic form and should prove to be one that will generate those bigger outlined, fast growing herd bulls or those banner collecting females that never go out of style.

AI BRED 4/16/25 TO GCC NIGHT OWL 3104L (ASA: 4284092)
SAFE AI WITH HEIFER CALF PREGNANCY - EST. DUE 1/24/26



Lot 19

Lot 19

KWIN JOURNEY HAZEL M418

PB SM • 3/15/24 • ASA:4569373 • TATT00: M418 • POLLED • BLACK

MR SR MIC DROP G1534

JS SURE BET 4T

OMF JOURNEYMAN J24

W/C JWC ANGEL 9005G

OMF DEKA D23

W/C MISS ANGEL 2870Z

CE	BW	WW	YW	ADG	MCE	MILK	MWW	STAY	DOC	CW	YG	MARB	BF	REA	API	TI
11.9	1.3	80	125.7	0.29	6.7	22.6	62.5	15.8	13	32.3	-0.43	0.05	-0.078	1.04	130.8	79.4

OFFERED BY WINTER FARM

• We introduce a daughter of the famed and proven Jared Werning Cattle donor W/C JWC Angel 9005G. The donor dam has left a trail of success with cattle that are in high demand from coast to coast. The sale offering could have started right here without hesitation, but like the rest of the offering, the quality and storied cow families are a page turn away within this sale book.

• This direct daughter of the \$110,000 OMF Journeyman J24 is built wide from the ground up. She sets on a big set of feet connected to plenty of substance of bone and leaves you square and true from hock to ground with plenty of genuine density and dimension from end to end.

• She is one of the true donor prospects of the offering, so take note and pay close attention.

• *Winter Farm retains the right to two IVF cycles with a minimum of 6 transferable embryos per cycle at the buyer's convenience and seller's expense.*

AI BRED 4/18/25 TO TJ SANDHILLS SWAG 816L (ASA: 4217005)

SAFE AI - EST. DUE 1/26/26



W/C JWC ANGEL 9005G

Prolific Dam of Lot 19



W/C MISS ANGEL 2870Z

Legendary Maternal Granddam of Lot 19



MISS WERNING KP 8543U
\$8 Million+ Producing Granddam of Lot 20



KWIN FORTUNE RISKY H018
Maternal Sister to Lot 20



KWIN COUNTER CIERRA L303
\$15,500 Maternal Sister to Lot 21



Lot 20



Lot 21

Lot 20

KWIN BROKER FANVY M406

PB SM • 2/28/24 • ASA:4569367 • TATT00: M406 • POLLED • BLACK

SVF STEEL FORCE S701

MR HOC BROKER

JM BF H25

REMINGTON LOCK N LOAD54U

W/C RJ 8543 5043C

MISS WERNING KP 8543U

CE	BW	WW	YW	ADG	MCE	MILK	MWW	STAY	DOC	CW	YG	MARB	BF	REA	API	TI
9.7	1.5	69.1	97.3	0.18	3.8	19.3	53.7	11.2	4.6	18.9	-0.46	-0.14	-0.082	0.92	101.3	66.4

OFFERED BY WINTER FARM

- M406 represents the first of two consecutive daughters sired by the "King of the Ring," MR HOC Broker. She is from a direct daughter of the legendary "8543" making her a closely knit sister to the \$230,000 Jared Werning Cattle high selling stud referred to as JWC Engage 144M!
- She boasts a very articulate pedigree laced with proven production and industry merit.
- This female should generate progeny that are consistent and profitable each and every time.

AI BRED 4/1/25 TO GCC NIGHT OWL 3104L (ASA: 4284092)
SAFE AI - EST. DUE 1/9/26

Lot 21

KWIN BROKER FANCY M121

PB SM • 2/4/24 • ASA:4569365 • TATT00: M121 • POLLED • BLACK

SVF STEEL FORCE S701

MR HOC BROKER

JM BF H25

CDI INNOVATOR 325D

UDE KANSA 59H

UDE KANSA 702E

CE	BW	WW	YW	ADG	MCE	MILK	MWW	STAY	DOC	CW	YG	MARB	BF	REA	API	TI
6.6	2.9	81.9	121	0.24	3.3	21.2	62.1	9.5	3.4	37.5	-0.41	0.03	-0.09	0.95	106.6	76.4

OFFERED BY WINTER FARM

- The dam of M121 was Kevin's selection from a past bred heifer offering of Udell Cattle Company. She is quite possibly the very best direct daughter of the many times Percentage Simmental champion bull employed by the JS Simmental firm, CDI Innovator 325D.
- 59H is a big pinned, bold ribbed, deep sided female that is laced with look, balance, and symmetry.
- We expect big time production and maternal value from this female and know that she will be the generating kind as her resume leaves nothing to be excused.
- 59H is a big pinned, bold ribbed, deep sided female that is laced with look, balance, and symmetry. The first three daughters of 59H have averaged an impressive \$12,500. Those females were sired by KCC1 Countertime 872H, EC Rebel 156F, and UDE New Heights 62/87.

AI BRED 3/30/25 TO GCC NIGHT OWL 3104L (ASA: 4284092)
SAFE AI - EST. DUE 1/7/26



Lot 22

Lot 22

KWIN UNLEASHED DQ M408

3/4 SM 1/4 AN • 3/1/24 • ASA:4569369 • TATTOO: M408 • POLLED • BLACK

SILVEIRAS STYLE 9303

CLRS AFTER SHOCK 604 A

HARKERS UNLEASHED

HILB MISS OO LA LA B412



CLRS DAIRY QUEEN 606D

CLRS BEAUTY QUEEN 420 B

CE	BW	WW	YW	ADG	MCE	MILK	MWW	STAY	DOC	CW	YG	MARB	BF	REA	API	TI
10	2.1	75	115.3	0.25	4.4	18.3	55.8	13.6	10.3	44.3	-0.13	0.38	-0.049	0.47	123.8	76.6

OFFERED BY WINTER FARM

- Another elite bred female from the Winter firm that represents one of the most proven cow families for the JS Simmental and Hilltop programs, CLRS Dairy Queen 606D.
- M408 is sired by the deceased, past National Percentage Champion Bull, Harkers Unleashed. JS Simmentals has sold countless full and maternal sibs successfully during 606D's tenure in the donor battery. The Prairie City, Iowa operation has a pair of MR HOC Broker sired sisters that replaced the proven donor dam to carry on the tradition of predictability and quality.
- CLRS Dairy Queen 606D sold for \$74,000 and is now a member of the illustrious donor battery at Hilltop Simmentals of Worthing, South Dakota.
- A pedigree you can hang your hat on!

AI BRED 5/18/25 TO WINC ALL RIGHT 213K (ASA: 4100635)
SAFE AI WITH HEIFER CALF PREGNANCY - EST. DUE 2/24/26



CLRS DAIRY QUEEN 606D

Dam of Lot 22



HARKERS UNLEASHED

2022 & 2023 Cattlemen's Congress Grand Champion Percentage Simmental Bull
Sire of Lot 22



Lot 23

Lot 23

WLF CALYPSO M316 ET

PB SM • 3/16/24 • ASA:4409607 • TATT00: M316 • POLLED • HETERO BLACK

W/C RELENTLESS 32C

PROFIT

JSUL SOMETHING ABOUT MARY 8421

JBSF PROUD MARY

X

BAILEY'S STRAWBERRY WINE 908G

BAILEYS 415B

CE	BW	WW	YW	ADG	MCE	MILK	MWW	STAY	DOC	CW	YG	MARB	BF	REA	API	TI
9.9	2.4	73	102.1	0.18	2.7	12.9	49.3	10.8	6	29.1	-0.33	0.03	-0.073	0.71	109.2	70.6

OFFERED BY LEEFERS FAMILY

- A powerful blend of proven sire power and maternal dominance!
- Her maternal granddam is the proven Bailey's Miss Dreamy 946W donor dam known for producing stock that were always in high demand wherever they were marketed. 946W built the Bailey name and reputation for how we know the family today.
- Her presence is undeniable as she blends power with poise and function. She sets wide and genuine to the surface with big feet, with added substance of bone, muscle, and body shape.
- Her flexibility and longevity in build will carry the mating to WHF Point Proven H45.

AI BRED 4/25/25 TO WHF POINT PROVEN H45 (ASA: 3780742)

PE 5/8/25-6/1/25 TO KSU STUNNER 0159 ET (AAA: 19874934) & 6/1/25-9/1/25 TO

WLF TANNERITE M413 (ASA: 4521824)

SAFE AI - EST. DUE 2/2/26



BAILEYS 415B

Maternal Granddam of Lot 23



BAILEY'S PROFIT'S DREAM

2018 AJA National Classic Grand Champion Purebred Simmental Heifer

\$195,000 3/4 Sister to Dam of Lot 23



Lot 24



VCL COUNTESS 255F "MILLIE"
\$100,000 Dam of Lots 24-26



VCL FORESIGHT
Full Brother to Dam of Lots 24-26

Lot 24

VCL 37M

PB SM • 1/3/24 • ASA:4555428 • TATT00: 37M • POLLED • BLACK

VCL FORESIGHT

MR CCF 20-20

STCC TECUMSEH 058J

VCL COUNTESS 255F "MILLIE"

HF SERENA

HCCO COUNTESS 412D

CE	BW	WW	YW	ADG	MCE	MILK	MWW	STAY	DOC	CW	YG	MARB	BF	REA	API	TI
6.5	3.3	74.3	101.4	0.17	1.6	171	54.2	14.8	5.8	22	-0.39	0.32	-0.068	0.85	127.6	77.5

OFFERED BY VOGLER CATTLE COMPANY

• A daughter of the \$620,000 STCC Tecumseh 058J from a very maternal daughter of MR CCF 20-20 comes with the service to the \$100,000 KCC1 3BCC Black Label 4016M.

- Her long, sleek build will be enhanced with body shape and dimension by 4016M.
- 37M is bred for investment success from every angle!

AI BRED 6/5/25 TO KCC1 3BCC BLACK LABEL 4016M (ASA: 4444386)

SAFE AI - EST. DUE 3/14/26

Lot 25

VCL MISS EPIC 44M

PB SM • 2/15/24 • ASA:4574412 • TATT00: 44M • POLLED • BLACK

WS ALL-AROUND Z35

MR CCF 20-20

OMF EPIC E27

VCL COUNTESS 255F "MILLIE"

OMF TIME LESS B100

HCCO COUNTESS 412D

CE	BW	WW	YW	ADG	MCE	MILK	MWW	STAY	DOC	CW	YG	MARB	BF	REA	API	TI
11.3	0.6	76.4	107.5	0.19	5.6	20.4	58.5	15.1	10.6	25.7	-0.31	0.26	-0.056	0.76	136.8	81.5

OFFERED BY VOGLER CATTLE COMPANY

• This daughter of OMF Epic E27 is the ticket from the \$100,000 VCL Countess 255F donor dam that topped the Legends of the Flint Hills Sale last year selling to Aces Wild Ranch of Texas.

- Her body shape is bold and round, and her width from the ground up is not easily mirrored.
- She is one that has so much to offer any program when it comes to balance and symmetry as well. Make sure to put her on your watch list as you browse this catalog or just see her in person on November 29, 2025!

AI BRED 5/15/25 TO KCC1 3BCC BLACK LABEL 4016M (ASA: 4444386)

SAFE AI - EST. DUE 2/27/26

Lot 26

VCL 2M

PB SM • 1/1/24 • ASA:4555425 • TATT00: 2M • POLLED • BLACK

LCCR FAVOR 149F

MR CCF 20-20

LLSF FAVORED ONE H98

VCL COUNTESS 255F "MILLIE"

HPF RITE 2 LUV 398D

HCCO COUNTESS 412D

CE	BW	WW	YW	ADG	MCE	MILK	MWW	STAY	DOC	CW	YG	MARB	BF	REA	API	TI
7.7	3.1	85	122.4	0.23	2.8	17.7	60.1	12.8	12	31.9	-0.41	0.3	-0.083	0.92	129.4	84.3

OFFERED BY VOGLER CATTLE COMPANY

- We appreciate the look and design of this duo of daughters sired by LLSF Favored One H98.
- This breeding piece ties together some very proven and predictable cow families from both sides, with the look and build needed for a successful investment experience.
- The service to the 2025 high selling bull at Kearns Cattle Company will only add to the cow power already within. 4016M is stout to the surface, flexible, bold throughout his center body, and very stout ended. He's undoubtedly one of the better calving ease options with phenotype and cow family on board in the business!

AI BRED 4/21/25 TO KCC1 3BCC BLACK LABEL 4016M (ASA: 4444386)

SAFE AI - EST. DUE 1/28/26



VCL 1L
Maternal Sister to Lot 27



Lot **27**



MECC ELLIE 34H
\$45,000 Dam of Lot 28



Lot **28**

Lot **27** VCL 7M

PB SM • 1/1/24 • ASA:4555426 • TATTOO: 7M • HOMO POLLED • BLACK

LCDR FAVOR 149F

LLSF FAVORED ONE H98

HPF RITE 2 LUV 398D

VCL FORESIGHT

VCL MISS FORSIGHT 15H

WAGR BRITTANY 205Z

CE	BW	WW	YW	ADG	MCE	MILK	MWW	STAY	DOC	CW	YG	MARB	BF	REA	API	TI
6.6	4.3	91.8	132.8	0.26	2.5	20.8	66.7	12.7	11.2	37.9	-0.48	0.16	-0.1	1.08	121.4	84.1

OFFERED BY VOGLER CATTLE COMPANY

• The Vogler crew brought another outstanding set of bred females to the 2025 edition of the Legends of the Flint Hills sale! They are bred for success from some of their very best, no doubt.

• 7M is another daughter of LLSF Favored One H98 that blends the proven VCL Foresight and MR HOC Broker for maternal sire power on the bottom side. Her maternal granddam is from one of the highest dollar-generating matings made in the CK and Wager breeding programs, as she would be a full sister to WAGR Panarama 204Z, the dam of the \$400,000 Profit.

• This female is broody designed, soft centered, flexible in her skeletal build, with genuine base width and capacity.

AI BRED 4/13/25 TO KCC1 3BCC BLACK LABEL 4016M (ASA: 4444386)

SAFE AI - EST. DUE 1/20/26

Lot **28** VCL 39M

PB SM • 2/1/24 • ASA:4555427 • TATTOO: 39M • POLLED • BLACK

WS ALL-AROUND Z35

OMF EPIC E27

OMF TIME LESS B100

THOR 503C

MECC ELLIE 34H

MECC MISS 20-20

CE	BW	WW	YW	ADG	MCE	MILK	MWW	STAY	DOC	CW	YG	MARB	BF	REA	API	TI
12.1	1.9	88.3	128	0.25	5.5	24	68.2	12.1	13.2	38	-0.31	0.2	-0.052	0.93	131.5	86.3

OFFERED BY VOGLER CATTLE COMPANY

• OMF Epic E27 is one of the most heavily utilized sires in the business. The undeniable quality and consistency from one to the next has been proven time and again. His daughters have proven to be very productive with impeccable udder quality and maternal instinct. The influence surfaces and is noticed throughout the breed as his name appears up close to some of the best cattle in the industry.

• 39M is certainly no exception, as her dam continues to be utilized as one of the "go-to" donors within the Vogler program as well.

• We are confident that many should find this breeding gem on or prior to sale day, as they will be drawn to her presence and balance she has to offer.

AI BRED 4/25/25 TO KCC1 3BCC BLACK LABEL 4016M (ASA: 4444386)

SAFE AI - EST. DUE 2/1/26



Lot 29



INSURRECTION
\$150,000 Sire of Lot 29



Lot 30



MID-AM MISS LICORICE 60L



WF ELECTRIFY F16
Dam of Lot 30

Lot 29

VCL MISS INSURRECTION 26M

PB SM • 1/20/24 • ASA:4575532 • TATT00: 26M • POLLED • BLACK

W/C STYLE 69E "FAMILY TRADITION"

LLSF PAYS TO BELIEVE ZU194

INSURRECTION

H

VCL 2716

SHCO FOXY 385F

FOXY LADY 1B

CE	BW	WW	YW	ADG	MCE	MILK	MWW	STAY	DOC	CW	YG	MARB	BF	REA	API	TI
9	3.5	77.8	118.4	0.25	4.7	22.1	60.9	11.1	9.2	37.3	-0.28	0.2	-0.071	0.69	119.2	77.5

OFFERED BY VOGLER CATTLE COMPANY

- W/C Style 69E "Family Tradition", Profit, MR HOC Broker, and LLSF Pays to Believe ZU194 line the pedigree box for 26M.
- She is one that offers extra length, overall size, and substance in a sound, productive package.
- A truly productive brood cow prospect with unlimited upside potential!

AI BRED 4/14/25 TO KCC1 3BCC BLACK LABEL 4016M (ASA: 4444386)

SAFE AI - EST. DUE 1/21/26

Lot 30

MID-AM MISS LICORICE 60L

1/2 SM 1/2 AN • 10/7/23 • ASA:4336855 • TATT00: 60L • HOMO POLLED • BLACK

PVF BLACKLIST 7077

W/C LOADED UP 1119Y

PVF MARVEL 9185

H

WF ELECTRIFY F16

PVF MISSIE 5245

HPF MS CROCUS U326

CE	BW	WW	YW	ADG	MCE	MILK	MWW	STAY	DOC	CW	YG	MARB	BF	REA	API	TI
11.8	1.2	79.9	123.4	0.27	3.9	22.8	58.4	14.6	10.8	50	-0.28	0.23	-0.055	0.97	124.1	78.1

OFFERED BY MID-AM GENETICS

- Brinley Bodenhausen brings you one of the very best SimAngus females to sell at public auction this fall!
- True to genetic form, this daughter of PVF Marvel 9185 is substantial in her look and presence. She is set high out of her blade, exquisite about her head and neck, and offers advantages in rib and shape from her shoulder back.
- W/C Loaded Up 1119Y assists the phenotypic blend, accenting the textbook hip and hind leg design and sharp overall construction. She's one to pay attention to and look up on sale day!

AI BRED 4/15/25 TO TJ SANDHILLS SWAG 816L (ASA: 4217005)

PE 5/1/25-7/15/25 TO G-S GAME ON COWBOY L10 (ASA: 4247152)

SAFE AI WITH HEIFER CALF PREGNANCY - EST. DUE 1/22/26



TL BOTTOMLINE
\$300,000 Sire of Lots 31 & 32



Lot 31



WINC ALL RIGHT 213K
\$147,5000 Service Sire to Lots 31 & 32



Lot 32

Lot 31

MISS HWGW BL-L95-G32

1/2 SM 1/2 AN • 12/23/23 • ASA:4570777 • TATT00: L95 • POLLED • BLACK

WS PILGRIM H182U

DUFF BASIC INSTINCT 6501

TL BOTTOMLINE

TL

HW MISS G32-1215

MISS STAR ABOVE

MISS FIRST LOOK 1215-2082

CE	BW	WW	YW	ADG	MCE	MILK	MWW	STAY	DOC	CW	YG	MARB	BF	REA	API	TI
9.5	1.8	69.3	103	0.21	3.4	18.3	52.9	10.4	10	20.1	-0.11	0.15	-0.015	0.38	101.5	67.2

OFFERED BY WALROD CATTLE COMPANY

• The \$300,000 TL Bottomline is one of the more underrated and underutilized bulls of the business. He left a trail of daughters that have proven to be the calf raising kind with undeniable fertility advantages as well. He could be used to rebuild commercial or seedstock cow herds without question. However, the fast track of chasing "the next big thing" works to the disadvantage of the "cowboy mindset".

• Regardless, the good cattlemen will find this Walrod bred female sale day, and when the videos get uploaded. Her maternal side is some of the very best of the Duff Power Plus program of Oklahoma. She will be described as laced with body shape, capacity, skeletal integrity, and look.

• She represents all things great with the SimAngus advantage.

AI BRED 3/31/25 TO WINC ALL RIGHT 213K (ASA: 4100635)

SAFE AI WITH BULL CALF PREGNANCY - EST. DUE 1/7/26

Lot 32

HWGW MISS BL L71-D65

PB SM • 11/25/23 • ASA:4559948 • TATT00: L71 • POLLED • BLACK

WS PILGRIM H182U

SFI PERFECT TIMING A6

TL BOTTOMLINE

TL

WALROD 65-A10

MISS STAR ABOVE

A10

CE	BW	WW	YW	ADG	MCE	MILK	MWW	STAY	DOC	CW	YG	MARB	BF	REA	API	TI
8.9	2.7	68.7	104.5	0.22	2	21.5	55.8	11.7	9.8	26.6	-0.21	0.16	-0.053	0.48	115.4	71.6

OFFERED BY WALROD CATTLE COMPANY

• Garren Walrod has always referenced the maternal prowess of the daughters with the influence of his SFI Perfect Timing A6 herd sire, and when blended with TL Bottomline, there's nothing better.

• This genetic combination will be relentless in production. She should make up ground where most fall short in terms of production value and pounds of calf weaned.

• She's the big bodied, broody, productive, baldy making kind that will only help your operation's bottom line.

AI BRED 3/31/25 TO WINC ALL RIGHT 213K (ASA: 4100635)

SAFE AI WITH BULL CALF PREGNANCY - EST. DUE 1/7/26



SO REMEDY 7F

\$530,000 Sire of Lot 33 & Paternal Grand sire of Lots 34 & 35



TJ SANDHILLS SWAG 816L

Service sire to several females throughout the offering!



Watch the Sale

"Broadcasting Live" on CCI Live!

www.CCI.live - Live Online Bidding
(405) 400-9505 Text/Call - schedule@cci.live
Find us on the App Store and Google Play
Over 35 years in livestock marketing!

Representing the Best Seedstock Genetics in the Nation...Only the Great Once!

Lot 33

BAV CORAL M226

PB SM • 2/26/24 • ASA:4573011 • TATTOO: M226 • POLLED • BLACK

HPF/HILL UPRISING C104

SFI GUARANTEED F35W

SO REMEDY 7F

HWGW MISS H40-Z45P

B&K CREAM SODA 8D

SFI MISSFINAL DRIVE Z45P

CE	BW	WW	YW	ADG	MCE	MILK	MWW	STAY	DOC	CW	YG	MARB	BF	REA	API	TI
13	1.3	74.5	114.1	0.25	7.1	23.1	60.3	12.4	13.4	40.4	-0.42	-0.07	-0.097	0.96	116	73

OFFERED BY B.A. CATTLE COMPANY

- The sire of M226, the \$530,000 SO Remedy 7F, continues to leave a trail of daughters that are maternally inclined and very much needed to achieve a program's goals in terms of quality production.
- SO Remedy 7F collides with the extra look and stoutness affiliated with LLSF Pays To Believe ZU194 and WAGR Driver 706T to create a big bodied, heavy structured great looking ground pounder.
- The mating to TJ Sandhills Swag 816L should be the ticket needed to ensure profitability on board!

AI BRED 4/1/25 TO TJ SANDHILLS SWAG 816L (ASA: 4217005)

SAFE AI - EST. DUE 1/8/26

Lot 34

HWGW MISS GAME ON L72-J32

PB SM • 11/24/23 • ASA:4559950 • TATTOO: L72 • POLLED • BLACK

SO REMEDY 7F

TJ HIGH CALIBRE 556B

SFI GAME ON J10B

HWGW MISS JONEEN J32-B40

SFI MISS LACEY

B40

CE	BW	WW	YW	ADG	MCE	MILK	MWW	STAY	DOC	CW	YG	MARB	BF	REA	API	TI
13.8	-0.2	69.2	109.3	0.25	7.4	21.3	55.8	18.2	12.5	39.6	-0.25	0.22	-0.059	0.7	144.5	78

OFFERED BY WALROD CATTLE COMPANY

- L72 combines two of the most proven sires in the industry for maternal excellence, focusing on udder quality, milk production, and calf quality. TJ High Calibre 556B and SO Remedy 7F have consistently demonstrated these traits, and we should not expect anything different here.
- This creature is good at the ground, travels with ease, attractive through her front third, smooth in her transitions, and good in her center rib design with shape from behind.
- She's built to withstand the real world with no hesitation.

AI BRED 3/31/25 TO TJ SANDHILLS SWAG 816L (ASA: 4217005)

SAFE AI WITH HEIFER CALF PREGNANCY - EST. DUE 1/7/26

Lot 35

HWGW MISS GAME ON M02-J213

PB SM • 2/22/24 • ASA:4559953 • TATTOO: M02 • POLLED • BLACK

SO REMEDY 7F

TMAS CANT TOUCH THIS 8531F

SFI GAME ON J10B

MISS CCF DIAMOND

SFI MISS LACEY

MS CCF KCA CRYSTAL CLEAR

CE	BW	WW	YW	ADG	MCE	MILK	MWW	STAY	DOC	CW	YG	MARB	BF	REA	API	TI
13	0.7	73.5	113	0.25	6.1	19.1	55.7	12.4	9.5	38.5	-0.36	0.08	-0.078	0.91	124.5	76.1

OFFERED BY WALROD CATTLE COMPANY

- Consistency keeps coming with the HWGW prefix as we introduce another direct daughter of the "in house" SO Remedy 7F son, SFI Game On J10B.
- M02 traces back to a female selected from C&C Farms of Georgia. One that is perfect in her udder design and built to the nines.
- The silhouette and presence of this female sets the standard with great angles and lines enhanced by body shape and substance to the surface.

AI BRED 3/31/25 TO TJ SANDHILLS SWAG 816L (ASA: 4217005)

SAFE AI WITH HEIFER CALF PREGNANCY - EST. DUE 1/7/26



SFI LEAD OFF H35Z
Sire of Lot 36



Lot **36**



Lot **37**

Lot **36**

WWC LEAD OFF LASS 36M

PB SM • 3/13/24 • ASA:4461715 • TATT00: 36M • POLLED • BLACK

WLE COPACETIC E02

WS EPIC E152

SFI LEAD OFF H35Z



WWC LASS 3J

SFI ENCHANTING LADY

WWC LASS 17G

CE	BW	WW	YW	ADG	MCE	MILK	MWW	STAY	DOC	CW	YG	MARB	BF	REA	API	TI
12	1.5	86.1	131.6	0.28	6.7	17.4	60.6	8.8	9.9	32.4	-0.42	0.09	-0.081	0.99	120.7	83.1

OFFERED BY WINDWALKER CATTLE COMPANY

- We introduce an exciting, blaze faced female from the Windwalker Cattle Company breeding program of southern Nebraska! She fairly represents the build and kind of ranch female it takes to withstand any environment she is introduced to.
- Flexibility, skeletal integrity, and hoof quality are traits that come to mind as we analyze 36M and appreciate the extra rib, flank, and capacity she brings to the equation.
- Her dam is an equally impressive daughter of the proven WS Epic E152 with outstanding udder quality and balance.
- She's the kind you build a program with, as the longevity is on board.

AI BRED 4/12/25 TO WINC ALL RIGHT 213K (ASA: 4100635)

PE 4/24/25-6/10/25 TO WWC MAYNARD 23M (ASA: 4461720) & 6/10/25-7/14/25 TO

SFI EXTRA MILE K10 (ASA: 4098055)

SAFE AI - EST. DUE 1/19/26

Lot **37**

WWC MS MILEY 14M

1/2 SM 1/2 AN • 2/16/24 • ASA:4461733 • TATT00: 14M • POLLED • BLACK

POSS MAVERICK

WWC KINGSMAN 33G

TC MAVERICK 148



WWC MIZ MILEY 27K

TC RUBY 8143

WWC MISS MILEY 30H

CE	BW	WW	YW	ADG	MCE	MILK	MWW	STAY	DOC	CW	YG	MARB	BF	REA	API	TI
9.6	1.6	93.5	150.3	0.36	4.4	34.7	82	14.8	11.5	59.7	-0.08	0.42	-0.02	0.74	137.2	91

OFFERED BY WINDWALKER CATTLE COMPANY

- A true SimGenetic gem that comes with the ability to improve numerical standards and phenotype for whoever has the final bid on sale day!
- She is one of the very best that Jay and Kathy have ever brought to town for appraisal, and her maternal side represents decades of maternal power produced with the Windwalker Cattle Company prefix on board.
- We could use every positive superlative to describe this beef producing female in terms of her kind and quality, but we would rather focus on the advantages she offers numerically. She ranks in the top 1% for Milk, the top 2% for MWW, and the top 10% for WW, YW, and ADG. She's the true legend of the Windwalker Cattle Company program for this sale, embodying the industry balance that we aim for as breeders.

AI BRED 4/12/25 TO WINC ALL RIGHT 213K (ASA: 4100635)

PE 4/24/25-6/10/25 TO WWC MAYNARD 23M (ASA: 4461720) & 6/10/25-7/14/25 TO

SFI EXTRA MILE K10 (ASA: 4098055)

SAFE AI - EST. DUE 1/19/26



Lot 38



SWC RED WAVE 376J
\$85,000 Sire of Lots 38

Lot 38

HWGW MISS RED WAVE L50-F15

3/4 SM 1/4 AN • 11/10/23 • ASA:4559952 • TATTOO: L50 • POLLED • HETERO BLACK

CONLEY HIGH RISE F3

WLE/LWSC REVOLUTION A409

SWC RED WAVE 376J

MISS HWGW F15-B10

SWC GWENDOLYN 376G

MISS SOO LINE B10 -1018

CE	BW	WW	YW	ADG	MCE	MILK	MWW	STAY	DOC	CW	YG	MARB	BF	REA	API	TI
11.2	0.3	66.5	93.7	0.17	3	20.3	53.7	15.7	9.8	16.2	-0.22	0.34	-0.044	0.45	125.9	72.7

OFFERED BY WALROD CATTLE COMPANY

- Here's one of the good ones from Garren and Heidi!
- A silhouette of perfection when one talks about production and phenotype, as she appears to be the kind that thrives on the native pastures, no matter the temperature or elements that Mother Nature can deal.
- Her chest is high and neat, with the same advantages from her blade as her neck, sets high and proud. From blade to forerib, her structure is seamless, with depth and shape leading to her center rib and beyond, as she transitions with plenty of stifle and shape into her upper hip. Many will find her pin set as textbook and her hind leg as good as it gets.
- L50 is a true Flint Hills diamond that any ranching entity would want many of!

AI BRED 3/31/25 TO WINC ALL RIGHT 213K (ASA: 4100635)

SAFE AI WITH BULL CALF PREGNANCY - EST. DUE 1/7/26



Lot 39



KCC1 COUNTERTIME 872H
\$230,000 Sire of Lot 39

Lot 39

HWGW MISS CT M25J-J25

PB SM • 1/12/24 • ASA:4559961 • TATTOO: M25J • POLLED • BLACK

ES RIGHT TIME FA110-4

THSF LOVER BOY B33

KCC1 COUNTERTIME 872H

HWGW MISS J25-G7

KCC1 HAVANA 83E

HWGW MISS LOADED UP G7-E31

CE	BW	WW	YW	ADG	MCE	MILK	MWW	STAY	DOC	CW	YG	MARB	BF	REA	API	TI
11.6	2.2	85.9	129.2	0.27	6	23.1	66	13.2	15.5	37.4	-0.3	0.25	-0.071	0.73	135.3	85.9

OFFERED BY WALROD CATTLE COMPANY

- Few in this industry have the patience or the resources to establish a true breeding program or working cowherd. That ideal has largely been replaced in the seedstock business by IVF technology. However, if it were still common, we believe that KCC1 Countertime 872H would be one of those select breeding bulls capable of doing the many little things that drives predictability into a profitable working cow herd.
- M25J is long sided, smooth, and maintains a productive brood cow look. The service to SFI Game On J10B will be something to look forward to next March.

AI BRED 6/1/25 TO SFI GAME ON J10B (ASA: 3934759)

SAFE AI - EST. DUE 3/10/26



Lot 40

Lot 40

BAV DUTCHESS M127

3/4 SM 1/4 AN • 1/27/24 • ASA:4573010 • TATTOO: M127 • POLLED • BLACK

MCM TOP GRADE 018X

CCR COWBOY CUT 5048Z

TJ HIGH CALIBRE 556B

ROCKING P ADVANCETTE CC E 1054

PRS LADY DONE RIGHT W214

PR ADVANCETTE E 09079

CE	BW	WW	YW	ADG	MCE	MILK	MWW	STAY	DOC	CW	YG	MARB	BF	REA	API	TI
11.7	1.5	82.4	129.2	0.29	7	20.7	61.8	19.9	13.7	43	-0.17	0.43	-0.044	0.62	145.9	83.7

OFFERED BY B.A. CATTLE COMPANY

- Deep, square, symmetrical, and genuine in her overall brood cow design! She is built to withstand the environmental pressures of weather or terrain with a build of attractive quality.
- Her genetic culmination of TJ High Calibre 556B with the influence of CCR Cowboy Cut 5048Z, screams ranching heritage with industry merit.
- We believe her photo and lineage tell the story of her profitable future and encourage investment consideration with little to no reservation.

AI BRED 3/22/25 TO WINC ALL RIGHT 213K (ASA: 4100635)

SAFE AI - EST. DUE 12/29/25

Lot 41

HWGW MISS FI L88-832

1/2 SM 1/2 AN • 12/1/23 • ASA:4559955 • TATT00: L88 • HOMO POLLED • BLACK

TJ HIGH CALIBRE 556B

PVF INSIGHT 0129

SFI FIXIT J13F

HFS ERICA 832

SFI MISS TURNIN HEADS

DAMERON ERICA 383

CE	BW	WW	YW	ADG	MCE	MILK	MWW	STAY	DOC	CW	YG	MARB	BF	REA	API	TI
7.3	2.8	81	128.7	0.3	3.9	25.6	66.1	14.2	10.4	57.9	-0.12	0.28	-0.025	0.81	117.7	77.2

OFFERED BY WALROD CATTLE COMPANY

• The GW brand believes in using genetics that are proven to provide longevity and industry versatility. Versatility means the genetics are diverse enough to allow for the successful production of marketable females or males. Every calf born has value, but it's quality and conversion that differentiate profit from loss.

• TJ High Calibre 556B is crossed with the Angus sire of similar qualities for well-rounded beef production, PVF Insight 0129. We know that these sires are filled with profit-minded traits and have proven track records. They complement each other in size, muscle, performance, conversion, and maternal quality in production as well.

AI BRED 3/31/25 TO WINC ALL RIGHT 213K (ASA: 4100635)
SAFE AI WITH HEIFER CALF PREGNANCY - EST. DUE 1/7/26



TJ HIGH CALIBRE 556B

\$400,000 Sire of Lot 40 &

Paternal Grand sire of Lots 41 & 42



Lot 41

Lot 42

HWGW MISS FI L100-G1

1/2 SM 1/2 AN • 12/12/23 • ASA:4565357 • TATT00: L100 • HOMO POLLED • BLACK

TJ HIGH CALIBRE 556B

SILVEIRAS STYLE 9303

SFI FIXIT J13F

HWGW MISS STYLE G1-008

SFI MISS TURNIN HEADS

DUFF BI 624 DIXIEERICA 008

CE	BW	WW	YW	ADG	MCE	MILK	MWW	STAY	DOC	CW	YG	MARB	BF	REA	API	TI
9.8	2.2	76.7	115.9	0.24	3.7	21.7	59.7	15.7	9	46.3	-0.07	0.28	-0.016	0.58	121.7	74.7

OFFERED BY WALROD CATTLE COMPANY

• SFI Fix it J13F is from one of the very best daughters to ever walk with the influence of the \$185,000 KMJ Revenue. Her silhouette and skeletal quality from the side were truly both impeccable and impressive. This genetic combination with Silveiras Style 9303 on the bottom yielded quite the attractive brood cow prospect.

• The maternal equation runs deep into the goods of the historic Duff program of Oklahoma. Her lineage is laced with some of the very best to ever grace the pastures of Hobart, Oklahoma.

• Tie in with confidence just as the mating was made.

AI BRED 5/12/25 TO WINC ALL RIGHT 213K (ASA: 4100635)
SAFE AI - EST. DUE 2/18/26



Lot 42

Lot 43

HANELS MISS KINGPIN M4108

3/4 SM 1/4 AN • 1/21/24 • ASA:4376662 • TATT00: M4108 • HOMO POLLED • BLACK

OMF HARD RIGHT H21

SCHOOLEY ELI 434B

MCC-PLG KINGPIN 319

MOORE GRACIOUS 152G

W/C MISS WERNING 983G

BC BARBARA EE 1-902

CE	BW	WW	YW	ADG	MCE	MILK	MWW	STAY	DOC	CW	YG	MARB	BF	REA	API	TI
10.3	0.8	73.8	117	0.27	4.8	20.7	57.7	13.1	11.3	29.2	-0.23	0.28	-0.051	0.58	120.5	75.8

OFFERED BY HANELS BLACK SIMMENTALS

• A leading lady from a leading bull producing program that is sired by the resident stud of Hanel's Black Simmentals, MCC-PLG Kingpin 319. MCC-PLG Kingpin 319 was bred by Meyring Cattle Company of Alliance, Nebraska, and during his employment at HBS, he has surfaced to the top of the heap for in house herd sires for the progressive operation.

• She is built right and true from the ground up, with depth and dimension throughout. The mating to the \$61,000 RVR Jordan23 478L is highly anticipated and should be profitable.

AI BRED 3/30/25 TO RVR JORDAN23 478L (ASA: 4374857)
SAFE AI - EST. DUE 1/6/26



MCC-PLG KINGPIN 319

Sire of Lot 43



Lot 44

Lot 44

M4 MS SENORITA 423M

1/2 SM 1/2 AN • 2/14/24 • ASA: 4415957 • TATTOO: 423M • HOMO POLLED • HOMO BLACK

LBRS GENESIS 669

WOODLAND CENTERFIRE

KBHR GUNSMOKE J131

X

RSA RITA 0535

KBHR E197

VALLEY OAKS RITA 7050

CE	BW	WW	YW	ADG	MCE	MILK	MWW	STAY	DOC	CW	YG	MARB	BF	REA	API	TI
14.2	1.4	86.3	138.5	0.33	8.3	31.2	74.5	172	14.9	62.3	-0.03	0.86	0.023	0.97	169	98

OFFERED BY M4 SIMMENTALS

- An exciting SimAngus female to initiate the division with numeric advantages!
- We trust that many will find this female prior to sale day and be more intrigued when they witness her in person.
- Certainly, an individual bred with progress in mind as she ranks in the top 5 % for Marb, the top 10% for both index values along with Milk and MWW, the top 15% for REA, the top 20% for YW and ADG, and the top 25% for WW.
- There is little left to question in terms of industry merit, as she sets the bar for all things profit.

AI BRED 5/26/25 TO OMF LUDACRIS L17 (ASA: 4255423)

PE 5/19/25-7/11/25 TO M4/3R REGIME 475M (ASA: 4415910)

SAFE AI WITH HEIFER CALF PREGNANCY - EST. DUE 3/4/26



OMF LUDACRIS L17
\$70,000 Service Sire to Lot 44

Senorita



Lot 45

Lot 45

HANELS MISS FIRESTEEL M4127

5/8 SM 3/8 AN • 1/28/24 • ASA:4376614 • TATT00: M4127 • POLLED • BLACK

G A R SURE FIRE
EGL FIRESTEEL 103F
TJ 22X

HANELS WIDE TRACK H0079
HANELS MISS WIDE TRACK K2116
HANELS MISS BOULDER G9005

CE	BW	WW	YW	ADG	MCE	MILK	MWW	STAY	DOC	CW	YG	MARB	BF	REA	API	TI
13.5	-1.3	71.8	108.9	0.23	4.3	24	59.5	18	14.2	28.4	-0.2	0.47	-0.037	0.58	146.5	82

OFFERED BY WALROD CATTLE COMPANY

- A direct daughter of EGL Firesteel 103F that comes with an extremely laid-back disposition and a resume suited for any progressive breeding program.
- Her hoof quality is impeccable, along with her running gear. She is big ribbed, big pinned, and offers as much volume as one desires.
- She ties some of the most proven sires for maternal greatness within the Hanel program within her maternal lineage, and when combined with her phenotype, she becomes a "why not" instead of a "maybe" for investment consideration.
- The mating to the \$120,000 GCC Night Owl 3104L should prove to be a masterpiece of profitability.

AI BRED 6/18/25 TO GCC NIGHT OWL 3104L (ASA: 4284092)

SAFE AI - EST. DUE 3/28/26



EGL FIRESTEEL 103F
Sire of Lot 45



GCC NIGHT OWL 3104L
Service sire to several females throughout the offering!



M4/3R MS INSPIRE L310
Maternal Sister to Dams of Lots 46 & 47



Lot **47**



M4/3R MS FIREBIRD K260
Maternal Sister to Dams of Lots 46 & 47

Schedule of Events

FRIDAY, NOVEMBER 28, 2025

3:00 PM Viewing of Cattle Begins

7:00 PM Appetizers & Cocktails

SATURDAY, NOVEMBER 29, 2025

9:00 AM Viewing of Cattle Begins

11:00 AM Complementary Lunch

12:00 PM Legends of the Flint Hills Production Sale

Lot **46**

M4/3R MS THRESHOLD 230M

PB SM • 1/5/24 • ASA:4415891 • TATTOO: 230M • HOMO POLLED • HOMO BLACK

CLRS GUARDIAN 317G

HOOK'S GALILEO 210G

CLRS JOHNNY WALKER 1049J

M4/3R MS GALILEE K230

HOOK'S YUMA 49Y

KSU MISS EAGLE 64G

CE	BW	WW	YW	ADG	MCE	MILK	MWW	STAY	DOC	CW	YG	MARB	BF	REA	API	TI
15.5	-0.2	98.1	154.8	0.35	8.8	21.7	70.6	19.6	16.7	50.4	-0.21	0.59	-0.043	0.86	182	105.1

OFFERED BY M4 SIMMENTALS

• All of the breed's great carcass and numeric enhancing sires show up close in the lineage of 230M! CLRS Guardian 317G, Hook's Galileo 210G, and Hook's Eagle 6E are in attendance.

• Here is a breeding piece that is very impressive, with her index drivers ranking in the top 2% for TI and the top 3% for API. She too brings the goods across multiple traits with top 4% for YW, top 5% for WW, ADG, and DOC, and the top 10% for CE, CW, and the almighty Marb!

• She is certainly an industry acceptable female that should only improve a program.

AI BRED 4/3/25 TO LCDR AFFIRMED 212H (ASA: 3812282)

PE 5/19/25-7/11/25 TO M4/3R REGIME 475M (ASA: 4415910)

SAFE AI WITH HEIFER CALF PREGNANCY- EST. DUE 1/10/26

Lot **47**

M4/3R MS DAUNTING 137M

PB SM • 1/10/24 • ASA:4415914 • TATTOO: 137M • HOMO POLLED • HOMO BLACK

HOOK'S GALILEO 210G

KBHR HIGH ROAD E283

HA JUSTICE 30J

M4/3R MS FORMIDABLE 137J

HOOK'S DACIA 14D

KSU MISS EAGLE 64G

CE	BW	WW	YW	ADG	MCE	MILK	MWW	STAY	DOC	CW	YG	MARB	BF	REA	API	TI
12.4	0.9	95.1	157.1	0.39	6.4	23.5	71	14.6	20.1	52.9	-0.33	0.64	-0.06	1.13	169.3	103.9

OFFERED BY M4 SIMMENTALS

• The Marple Family does an outstanding job of mating cattle with excellent numeric profiles enhanced with genomic data. Each year, the product becomes more consistent with an acceptable phenotype on board. They know what cattle need to do for their customers, and that's what drives the brand to provide selfless customer service.

• M4/3R Ms Daunting 137M represents the discipline of the program both physically and genetically as she ranks in the top 1% for DOC, the top 2% ADG, the top 3% for TI and YW, the top 4% Marb, the top 5% CW, and the top 10% for API and WW.

AI BRED 4/29/25 TO KBHR KEYNOTE K229 (ASA: 4104347)

PE 5/19/25-7/11/25 TO M4/3R REGIME 475M (ASA: 4415910)

SAFE AI WITH BULL CALF PREGNANCY - EST. DUE 2/5/26

Lot **48**

M4 MS RIGHTEOUSNESS 412M

PB SM • 2/10/24 • ASA:4415946 • TATTOO: 412M • HOMO POLLED • HOMO BLACK

HOOK'S GALILEO 210G

TJ TEARDROP 783F

HA JUSTICE 30J

RAINS MISS TEARDROP H002

HOOK'S DACIA 14D

RAINS LONGEVITY E738

CE	BW	WW	YW	ADG	MCE	MILK	MWW	STAY	DOC	CW	YG	MARB	BF	REA	API	TI
15.6	0.4	90	148.4	0.36	8.7	26.8	71.8	15.1	16.4	40.5	-0.17	0.68	-0.035	0.66	174.4	102.4

OFFERED BY M4 SIMMENTALS

• A female appropriately named would be another direct daughter of HA Justice 30J, with a number profile suitable to her namesake.

• With the influence of the big centered, three-dimensional TJ Tear Drop 783F up close on the maternal side, only enhances your investment merit in one of the good ones from the M4 prefix!

• This dominating donor prospect charts in the top 4% for TI, Marb, and ADG, the top 10% for API, CE, YW, and Doc, the top 15% for MCE, the top 20% for WW, and the top 25% for CW and Milk while posting an adjusted weaning weight of 767 pounds! Impressive may not be the right word.

AI BRED 4/3/25 TO RSA TRUE BALANCE 1311 (AAA: 20129422)

PE 5/19/25-7/11/25 TO M4/3R REGIME 475M (ASA: 4415910)

SAFE TO PE SIRE

Lot 49

M4/3R MS EMPRESS 409M

3/4 SM 1/4 AN • 2/4/24 • ASA:4415943 • TATTOO: 409M • HOMO POLLED • HOMO BLACK

WS PROCLAMATION E202

G A R ASHLAND

KBHR BOLD RULER H152

M4 MS WESTERNLY 132J

BAR CK MS X38 106Z

M4 MS WESTERN WAY F6Z

CE	BW	WW	YW	ADG	MCE	MILK	MWW	STAY	DOC	CW	YG	MARB	BF	REA	API	TI
13.9	1.9	94.3	148.8	0.34	9.1	31.4	79.1	18.2	14.4	43.2	-0.12	0.77	-0.021	0.64	168.4	100.3

OFFERED BY M4 SIMMENTALS

- Moderation in spread on the expected profile allows for cattle to be born with vigor at a slightly higher birth weight and still have the punch to gain the necessary ground to weaning, like this one did when she adjusted to 772 pounds of pay weight!
- Proven pedigree on both sides of the genetic poster with KBHR Bold Ruler H152 and the Angus great G A R Ashland in print.
- This genetic contributor posts advantages for MWW in the top 1%, the top 2% for Milk, the top 5% for TI, 10% for API, Marb, WW, and YW, and the top 15% for ADG. What more would one like?!

AI BRED 4/11/25 TO LCDR AFFIRMED 212H (ASA: 3812282)

PE 5/19/25-7/11/25 TO M4/3R REGIME 475M (ASA: 4415910)

SAFE AI WITH HEIFER CALF PREGNANCY - EST. DUE 1/18/26



Lot 49

Lot 50

M4 MS SYNERGIST 417M

PB SM • 2/14/24 • ASA:4415951 • TATTOO: 417M • HOMO POLLED • HOMO BLACK

GIBBS 7382E BROAD RANGE

LBR5 GENESIS G69

GIBBS 9114G ESSENTIAL

M4 MS CATALYST K205

GIBBS 7153E STAR 3136A

M4 MS IMPULSE E6Z

CE	BW	WW	YW	ADG	MCE	MILK	MWW	STAY	DOC	CW	YG	MARB	BF	REA	API	TI
15.6	-0.9	102.4	169.9	0.42	7.3	30.3	81.4	19.9	18.1	55.7	-0.16	0.79	0.007	1.14	197.6	114.6

OFFERED BY M4 SIMMENTALS

- Unhinged genetic ledger with ridiculous stats on her expanded report that would leave any intelligent stockman in awe!
- Gibbs 9114 Essential worked phenomenally on the LBR5 Genesis G69 dam of 417M, as indicated by her raw data and projected values for traits that are essential for profit in any operation.
- She ranks in the top 1% for YW, ADG, \$GN, MWW, API, and TI, the top 2% for Marb, WW, and DOC, the top 5% for CW, and the top 10% for CE, Milk, and Stay.

AI BRED 4/20/25 TO BAS MONEY MAKER J801 (ASA: 3978845)

PE 5/19/25-7/11/25 TO M4/3R REGIME 475M (ASA: 4415910)

SAFE AI WITH BULL CALF PREGNANCY - EST. DUE 1/27/26



M4 MS IMPULSE E6Z
Maternal Granddam of Lot 50

Lot 51

M4 MS FULFILLMENT 419M

3/4 SM 1/4 AN • 2/10/24 • ASA:4415953 • TATTOO: 419M • HOMO POLLED • HOMO BLACK

GIBBS 7382E BROAD RANGE

HOOK'S EAGLE 6E

GIBBS 9114G ESSENTIAL

M4 MS PERFECTION 129J

GIBBS 7153E STAR 3136A

M4 MS FINALIST Z45E

CE	BW	WW	YW	ADG	MCE	MILK	MWW	STAY	DOC	CW	YG	MARB	BF	REA	API	TI
14.4	-0.5	107.1	175.5	0.43	6.8	32	85.5	15.3	17.5	71	-0.36	0.18	-0.036	1.63	142.9	98

OFFERED BY M4 SIMMENTALS

- We present another incredible performance from the Gibbs 9114G Essential sire group with the ultimate assist from a daughter of Hook's Eagle 6E.
- It's mind boggling when one looks at the numeric ledger that this female owns!
- She charts with the best of the best, representing the top 1% for WW, YW, ADG, MWW, and REA, the top 2% for CW, the top 5% for DOC, and the top 10% for TI. Another dominant performance.

AI BRED 4/3/25 TO GCC NIGHT OWL 3104L (ASA: 4284092)

PE 5/19/25-7/11/25 TO M4/3R REGIME 475M (ASA: 4415910)

SAFE AI WITH HEIFER CALF PREGNANCY - EST. DUE 1/10/26



M4 MS FINALIST Z45E
Maternal Granddam of Lot 51



Lot 52



HANELS TEN PLUS K2002
Sire of Lots 52-56



Lot 53



WS PROCLAMATION E202
Maternal Grandsire of Lot 53

Lot 52

HANELS MISS TEN PLUS M4023

3/8 SM 1/2 AN 1/8 CH • 1/5/24 • ASA:4376533 • TATT00: M4023 • POLLED • BLACK

MGR TREASURE

HANELS TEN PLUS K2002

HANELS MISS IDENTIFIED G9000

CLRS DIVIDEND 405D

HANELS MISS DIVIDEND J1086

HANELS MISS TEMPLE D6047

CE	BW	WW	YW	ADG	MCE	MILK	MWW	STAY	DOC	CW	YG	MARB	BF	REA	API	TI
14.3	-2	84	142.2	0.36	10.1	23.6	72.3	15.3	12	55.7	0.1	0.27	0.001	0.29	135.7	83.4

OFFERED BY HANELS BLACK SIMMENTALS

- Hanel's offering will include the first mature daughters of the past bull sale feature Hanel's Ten Plus K2002.
- Hanel's Miss Ten Plus M4023 is a true outlier when it comes to mass, volume, and overall capacity. M4023 is a SimAngus female that is loaded with the brood cow essentials necessary to make a true impact in the pasture.
- M4023 ranks among the top 10% for ADG, \$GN, and MCE, top 15% YW, MWW, and CW, top 20% BW, top 30% CE, and top 35% WW.

AI BRED 3/30/25 TO TJ GOLD RUSH 506K (ASA: 4065112)
SAFE AI - EST. DUE 1/6/26

Lot 53

HANELS MISS TEN PLUS M4042

1/2 SM 1/2 AN • 1/8/24 • ASA:4376642 • TATT00: M4042 • POLLED • BLACK

MGR TREASURE

HANELS TEN PLUS K2002

HANELS MISS IDENTIFIED G9000

WS PROCLAMATION E202

HANELS MISS PROCLAMATION J1184

HANELS MISS HUMMER Y1206

CE	BW	WW	YW	ADG	MCE	MILK	MWW	STAY	DOC	CW	YG	MARB	BF	REA	API	TI
12	-0.4	78.4	123.9	0.28	9	24.3	68.3	15.2	14	56.9	0.12	0.63	0.014	0.35	148	87.6

OFFERED BY HANELS BLACK SIMMENTALS

- We are certain that many will appreciate the Hanel's Ten Plus K2002 sire group for the consistent volume and capacity. The structure and balance of M4042 is of utmost quality and suitable for any ranch's terrain and resources or lack thereof.
- M4042 was raised by an elite Purebred dam of the program, is balanced in every aspect of production, and posted a weaning ratio of 103.
- Unmatched power, substance, fleshing ease, and functionality. A true brood cow prospect!

AI BRED 3/30/25 TO TJ SUPREME 504M (ASA: 4366333)
SAFE AI - EST. DUE 1/6/26

Lot 54

HANELS MISS TEN PLUS M4041

3/8 SM 5/8 AN • 1/8/24 • ASA:4376521 • TATT00: M4041 • POLLED • BLACK

MGR TREASURE

HANELS COWBOY CUT D6208

HANELS TEN PLUS K2002

HANELS MISS COWBOY CUT H0214

HANELS MISS IDENTIFIED G9000

HANELS MISS NUGGET Z2105

CE	BW	WW	YW	ADG	MCE	MILK	MWW	STAY	DOC	CW	YG	MARB	BF	REA	API	TI
12.7	-1.7	70.2	121.3	0.32	9.9	22.8	62.7	16.9	12.4	36.1	0.15	0.71	0.032	0.14	154.5	85

OFFERED BY HANELS BLACK SIMMENTALS

- Another daughter of K2002 with the package assistance from a descendant of one of the heaviest utilized sires of the industry CCR Cowboy Cut 5048Z.
- This may very well be one of the very best offered by the good veterinarian in terms of her kind and presence. She is so elegant about her front third yet robust in her center body with both an impeccable underline and topline. One that is smooth as glass in her transitions and very collected in her build while in motion.
- Her ledger is loaded with longevity and stability for many productive years. M4041 ranks among the top 15% for \$GN, MCE, and Marb and the top 25% for API, ADG, and BW.

AI BRED 3/30/25 TO TJ SUPREME 504M (ASA: 4366333)

SAFE AI - EST. DUE 1/6/26



Lot 54

Lot 55

HANELS MISS TEN PLUS M4040

1/2 SM 1/2 AN • 1/8/24 • ASA:4376610 • TATT00: M4040 • POLLED • BLACK

MGR TREASURE

CLRS DIVIDEND 405D

HANELS TEN PLUS K2002

HANELS MISS DIVIDEND G9080

HANELS MISS IDENTIFIED G9000

HANELS MISS PALE D6108

CE	BW	WW	YW	ADG	MCE	MILK	MWW	STAY	DOC	CW	YG	MARB	BF	REA	API	TI
13.4	-2.5	71	122.1	0.32	8.8	24.8	65	18.1	14	32.5	0.18	0.61	0.034	0.01	157	85.8

OFFERED BY HANELS BLACK SIMMENTALS

- Chunky, stout, deep sided, modern designed brood cow prospect with the pedigree influence of proven industry greats.
- Brock Hanel has done a masterful job of cleaning up the design and balance aspects associated with his performance-based program, as indicated by the daughters of Hanel Ten Plus K2002.
- This female ranks in the top 10% for \$GN, the top 15% for BW, the top 20% for API and Stay, and the top 25% for Marb.

AI BRED 3/30/25 TO RVR JORDAN23 478L (ASA: 4374857)

SAFE AI - EST. DUE 1/6/26



Lot 55

Lot 56

HANELS MISS TEN PLUS M4032

1/2 SM 1/2 AN • 1/7/24 • ASA:4376566 • TATT00: M4032 • HOMO POLLED • BLACK

MGR TREASURE

WLE COPACETIC E02

HANELS TEN PLUS K2002

SFI MISS DYNASTY H2A

HANELS MISS IDENTIFIED G9000

SFI MISS TWO TIMEN

CE	BW	WW	YW	ADG	MCE	MILK	MWW	STAY	DOC	CW	YG	MARB	BF	REA	API	TI
11.2	-0.3	77.6	132.2	0.34	8.8	21.7	65.2	12.4	9.8	47.8	-0.1	0.37	-0.031	0.56	130.2	82

OFFERED BY HANELS BLACK SIMMENTALS

- Maternal function oozes as one studies this soft built, attractive breeding piece.
- In motion, she's equally appealing, if not more, as her skeleton exhibits the longevity that is inherent in her build.
- She may not have the wow factor on paper as her sisters do, but she will prove to be very productive and have the advantage of weaning a bigger calf as she records a weaning ratio of 102, along with top 10% \$GN and top 15% ADG values.

Hanel's Black Simmentals retains the right to two conventional flushes with a minimum of 6 transferable embryos per cycle at the buyer's convenience and seller's expense.

AI BRED 3/30/25 TO TJ SUPREME 504M (ASA: 4366333)

SAFE AI - EST. DUE 1/6/26



HANELS MISS EPIC L3027
Maternal Sister to Lot 56



Lot 56



Lot 57



TJ GOLD STRIKE 506J
Sire of Lots 57 & 58



Lot 59



TJ CHIEF 460G
Sire of Lot 59

Lot 57

HANELS MISS GOLD STRIKE M4004

3/4 SM 1/4 AN • 1/1/24 • ASA:4376583 • TATT00: M4004 • POLLED • BLACK

TJ GOLD 274G

KBHR HIGH ROAD E283

TJ GOLD STRIKE 506J

H

HANELS MISS HIGH ROAD K2015

TJ 52A

HANELS MISS CAP E7045

CE	BW	WW	YW	ADG	MCE	MILK	MWW	STAY	DOC	CW	YG	MARB	BF	REA	API	TI
12.9	0.2	88.5	142.7	0.34	6.2	25.1	69.3	21	16.3	45.9	-0.1	0.44	-0.004	0.75	155.6	89.9

OFFERED BY HANELS BLACK SIMMENTALS

- This group from Hanel's Black Simmentals represents the best that they have ever produced, and one can tell that there is a major pride factor involved when the mating decisions were made! Genetics that are proven, time tested and destined to leave a mark on your breeding program.
- Many good stockmen should gravitate towards this fundamentally acceptable, modern designed breeding piece with an abundance of rib and substance from end to end.
- She charts in the top 4% for Stay, the top 10% DOC, the top 15% for YW and ADG, top 20% for WW, and the top 25% for API and MWW values.

AI BRED 5/25/25 TO TJ GOLD RUSH 506K (ASA: 4065112)

SAFE AI - EST. DUE 3/3/26

Lot 58

HANELS MISS GOLD STRIKE M4011

PB SM • 1/2/24 • ASA:4376558 • TATT00: M4011 • POLLED • BLACK

TJ GOLD 274G

KBHR HIGH ROAD E283

TJ GOLD STRIKE 506J

H

HANELS MISS HIGH ROAD K2010

TJ 52A

HANELS MISS DRIFTWOOD H0042

CE	BW	WW	YW	ADG	MCE	MILK	MWW	STAY	DOC	CW	YG	MARB	BF	REA	API	TI
8.5	2.8	102.8	161.6	0.37	4.1	23.7	74.9	14.3	14.8	60.4	-0.19	0.38	-0.03	1.02	147.1	98.1

OFFERED BY HANELS BLACK SIMMENTALS

- Brock brought the goods for your appraisal for sure! Getting Brock to offer females is like pulling teeth; he doesn't enjoy sharing his investment —whether in dollars or sweat —so be prepared to invest... these are the best that the program has to offer!
- This daughter of TJ Gold Strike 506J has the look and build of rancher approval with a great set of feet and running gear to go with it.
- M4011 ranks in the top 3% for WW, YW, and CW, the top 4% ADG, the top 10% TI and MWW, and the top 15% \$GN.

AI BRED 4/29/25 TO TJ GOLD RUSH 506K (ASA: 4065112)

SAFE AI - EST. DUE 1/26/26

Lot 59

WWC MISS BIT 4M

3/4 SM 1/4 AN • 1/31/24 • ASA:4461739 • TATT00: 4M • POLLED • BLACK

TJ FROSTY 318E

SCHOOLEY STANDOUT 27G

TJ CHIEF 460G

H

WWC MISS BIT 7K

TJ 52A

WWC MISS BIT 26H

CE	BW	WW	YW	ADG	MCE	MILK	MWW	STAY	DOC	CW	YG	MARB	BF	REA	API	TI
12	0.2	74.1	108.8	0.22	5.4	27.1	64.1	17	12.2	31.1	-0.14	0.24	-0.033	0.46	127.6	75.7

OFFERED BY WINDWALKER CATTLE COMPANY

- This year's offering is saturated from top to bottom with sheer quality!
- If you are in search of livestock that are pulled apart with true width of base and center, stock that are loose but collected in their build, and cattle that come with top shelf genetics top and bottom, then you seriously need to be in Westmoreland, Kansas on November 29, 2025!
- Females like 4M is one of the many reasons to attend or engage online with confidence. The Windwalker cattle are sound, great footed, and should thrive wherever they are introduced. They, too, have selected for milk and the hard-to-find maternal instinct that the business needs.

AI BRED 4/14/25 TO GIBBS CULMINATION (ASA: 4120425)

PE 6/25/25-7/14/25 TO SFI EXTRA MILE K10 (ASA: 4098055)

SAFE AI - EST. DUE 1/21/26



Lot 60

Lot 60

HANELS MISS HARDWOOD M4141

3/4 SM 1/4 AN • 1/25/24 • ASA:4376639 • TATT00: M4141 • POLLED • BLACK

VJT DRIFTWOOD E55

CCR BOULDER 1339A

HARMS HARDWOOD

TJ 41Z



HANELS MISS BOULDER G9005

TJ MISS 611E

CE	BW	WW	YW	ADG	MCE	MILK	MWW	STAY	DOC	CW	YG	MARB	BF	REA	API	TI
15.1	-3	71.1	107.1	0.22	7.3	29.5	64.4	17.9	13.2	31.3	-0.35	0.35	-0.05	0.99	145.7	82.3

OFFERED BY HANELS BLACK SIMMENTALS

- Another great bred female up for acquisition from the Hanel's Black Simmentals breeding program. The quality from Courtland, Kansas doesn't run short in this year's offering!
- She represents one of the popular and proven sire groups of the Hanel's Black Simmentals breeding program, Harms Hardwood. His sons have been in demand annually through the bull sale, and his daughters are producing the kind that make the stringent sort for the highlighted events.
- M4141 sets high out of her blade with a very maternal look to her front third. Her transition from blade to forerib is flawless. We love her rib design, depth of flank, and levelness of hip. Her bone is ideal, and her feet are big. She's a big-time female from the proven genetic vault of HBS.
- Her genetic ledger puts her in the top 10% for BW, REA, and YG, the top 15% for Milk, and top 20% for DMI!

AI BRED 4/19/25 TO TJ GOLD RUSH 506K (ASA: 4065112)

SAFE AI - EST. DUE 1/26/26



HARMS HARDWOOD

Sire of Lot 60



TJ GOLD RUSH 506K

Service sire to several females throughout the offering!



Lot 61



M4 MS KEEP THE FAITH 810L
Maternal Sister to Lot 61



LCDR RESERVE 210J
Sire of Lots 62 & 63



M4 MS AUTHENTIC Z6G
Dam of Lot 63

Lot 61

M4 MS BELIEVABLE 810M

3/4 SM 1/4 AN • 2/18/24 • ASA:4415917 • TATTOO: 810M • HOMO POLLED • HOMO BLACK

EGL FIRESTEEL 103F

OMF EPIC E27

LCDR AFFIRMED 212H

M4 MS REST ASSURED J810

WS MISS SUGAR C4

M4 MS BELEAVE 810F

CE	BW	WW	YW	ADG	MCE	MILK	MWW	STAY	DOC	CW	YG	MARB	BF	REA	API	TI
13	1.4	101.5	151.7	0.31	4.9	29.6	80.2	15.7	14.3	56.2	-0.14	0.44	-0.046	0.68	145.9	96.1

OFFERED BY M4 SIMMENTALS

- LCDR Affirmed 212H has proved to be the sire of choice for those that seek the proven influence from EGL Firesteel 103F with another potent breeding dam attached, such as C4.
- This female boasts the influence of the ever so proven and timeless sire of the breed OMF Epic E27 on her maternal side as well.
- She charts in the top 2% for MWW, the top 3% for WW, and the top 10% for TI, YW, Milk, and CW, too.

AI BRED 4/17/25 TO GCC NIGHT OWL 3104L (ASA: 4284092)

PE 5/19/25-7/11/25 TO M4/3R REGIME 475M (ASA: 4415910)

SAFE AI WITH BULL CALF PREGNANCY - EST. DUE 1/24/26

Lot 62

M4 MS RITA CACHE 2163M

1/2 SM 1/2 AN • 2/2/24 • ASA:4425243 • TATTOO: 2163M • HOMO POLLED • HOMO BLACK

HHS MR ENTOURAGE 867B

G A R HOME TOWN

LCDR RESERVE 210J

KSU RITA 2163

LCDR MS ECHO 43E

G A R PROACTIVE 1258

CE	BW	WW	YW	ADG	MCE	MILK	MWW	STAY	DOC	CW	YG	MARB	BF	REA	API	TI
14.3	0.4	96.5	153.3	0.36	10.6	22.8	71.8	19.7	16.2	62.8	-0.07	0.79	0.018	1.04	176	102.8

OFFERED BY M4 SIMMENTALS

- This daughter of LCDR Reserve 210J is from a very productive daughter of G A R Hometown.
- Her genomic data accentuated her genetic ledger as she dominates the field for index values and carcass. She ranks in the top 3% for TI, the top 4% for CW, the top 5% for API and WW, and she continues to drive profit with top 10% values for Marb, REA, YW, Stay, and DOC.
- Inject this female into your program and enjoy the mating flexibility she has to offer.

AI BRED 4/2/25 TO BAS MONEY MAKER J801 (ASA: 3978845)

PE 5/19/25-7/11/25 TO M4/3R REGIME 475M (ASA: 4415910)

SAFE AI WITH HEIFER CALF PREGNANCY - EST. DUE 1/9/26

Lot 63

M4/HPC/JF MS GENUINE 415M

3/4 SM 1/4 AN • 2/8/24 • ASA:4415949 • TATTOO: 415M • HOMO POLLED • HOMO BLACK

HHS MR ENTOURAGE 867B

G A R SURE FIRE

LCDR RESERVE 210J

M4 MS AUTHENTIC Z6G

LCDR MS ECHO 43E

KSU MISS SHEAR FORCE 6Z

CE	BW	WW	YW	ADG	MCE	MILK	MWW	STAY	DOC	CW	YG	MARB	BF	REA	API	TI
8.9	4.1	101.9	168.9	0.42	5.3	24.5	75.1	16.5	16.9	54.4	-0.19	0.45	-0.019	1.04	142.2	93.8

OFFERED BY M4 SIMMENTALS

- This Marple bred female is saturated in the Simmental breed's dominant sire of consistent EPD status, Hook's Shear Force 38K, along with the influence of G A R Sure Fire. Her pedigree can read and write textbooks on animal breeding and selection!
- We do concur with her name, "Genuine", as we expect her to be a genuine enhancer of all things profit in production. She charts in the top 1% for YW, the top 2% for WW and ADG, the top 4% for MWW, the top 10% for REA and DOC, and the top 15% for TI and CW.

AI BRED 4/23/25 TO BAS MONEY MAKER J801 (ASA: 3978845)

PE 5/19/25-7/11/25 TO M4/3R REGIME 475M (ASA: 4415910)

SAFE AI WITH BULL CALF PREGNANCY - EST. DUE 1/30/26



CCS/JS DOC 48H
Sire of Lot 64



Lot **64**



DEER VALLEY OPTIMUM 9246
Sire of Lot 65



Lot **65**

Lot **64**

HANELS MISS DOC M4148

3/4 SM 1/4 AN • 2/1/24 • ASA:4376567 • TATT00: M4148 • POLLED • BLACK

CDI INNOVATOR 325D

MGR TREASURE

CCS/JS DOC 48H

HANELS MISS TREASURE J1099

WHF SUMMER 365C

HANELS MISS COWBOY CUT G9195

CE	BW	WW	YW	ADG	MCE	MILK	MWW	STAY	DOC	CW	YG	MARB	BF	REA	API	TI
8.5	1.4	97.7	151.5	0.34	6.9	18.9	68.5	12.4	16.1	58.7	-0.19	0.36	-0.047	0.87	129.1	90.7

OFFERED BY HANELS BLACK SIMMENTALS

- The quest for excellence is relentless for the Legends of the Flint Hills group.
- This female is very representative of that for the Hanel outfit as well.
- She is a direct daughter of CCS/JS Doc 48H, a herd sire that Brock Hanel selected from the JS Simmental bull battery. "Doc" has proven to be a valuable part of the breeding schematic for the Courtland, KS based operation, as his sons are in demand in the annual bull offering as well.
- The stunning feature of the chiseled, high tying front third, in combination with bountiful rib design, and a flawless build, will make one take notice.
- She does not slack on paper either, ranking in the top 4% for WW, the top 10% for YW and CW, the top 15% for ADG and DOC, and the top 20% for REA, while posting a weaning ratio of 104.

AI BRED 3/30/25 TO CONNEALY RESTORE 178C (AAA: 20383223)

SAFE AI - EST. DUE 1/6/26

Lot **65**

HANELS MISS OPTIMUM 4001

ANGUS • 1/5/24 • AAA:21030809 • TATT00: M4001 • HOMO POLLED • HOMO BLACK

DEER VALLEY GROWTH FUND

CONNEALY BLACKHAWK 6198

DEER VALLEY OPTIMUM 9246

HANELS MISS BLACKHAWK H0005

G A R PROGRESS 830

MILL BRAE COM MAID 6072

CE	BW	WW	YW	ADG	CEM	MILK	MWW	CW	MARB	REA	FAT	\$M	\$W	\$F	\$B	\$C
13	0.4	87	153	0.28	11	21	100	62	0.34	0.99	0.054	58	82	99	138	237

OFFERED BY HANELS BLACK SIMMENTALS

- The lone Angus female of the offering raises the bar for the level of quality and eye appeal. Three-dimensional, impeccable structure, and breeding value that will rival many in the industry!
- She is a direct daughter of Deer Valley Optimum from a proven daughter of Connealy Blackhawk 6198.
- This female ranks in the top 15% for \$W and the top 10% for CED, WW, and YW values.

AI BRED 5/10/25 TO TJ GOLD RUSH 506K (ASA: 4065112)

SAFE AI - EST. DUE 2/17/26



Lot 66

Lot 66

SFI MISS RUBY M82D

3/4 SM 1/4 AR • 1/18/24 • ASA:4396234 • TATT00: M82D • HOMO POLLED • RED

WHEATLAND RIVAL 8125F

CDI AUTHORITY 77X

WHEATLAND NEXT CENTURY 43H

X

ES D82

WHEATLAND LADY 123Y

EIR T207

CE	BW	WW	YW	ADG	MCE	MILK	MWW	STAY	DOC	CW	YG	MARB	BF	REA	API	TI
5.2	3.4	82.4	116.2	0.21	-1.2	24.5	65.6	12.7	7.3	34.4	-0.36	-0.13	-0.069	0.91	87.5	66.7

OFFERED BY SCHAAKE FARMS INC

- We feature an elite group of red hided females in this year's offering.
- Schaaque Farms brings you a very elite individual in terms of power, substance, and breeding flexibility.
- M82D is a virtual outcross breeding piece! She is sired by Wheatland Next Century 43H and from a very stout and productive daughter of CDI Authority 77X.
- We love many things about this genetic gem and know that many others will too.
- A true sale feature that is destined for the donor pen!

AI BRED 3/31/25 TO C-T REPUTATION 0094 (RAAA: 4296453)

SAFE AI - EST. DUE 1/7/26



ES D82

Dam of Lot 66



C-T REPUTATION 0094

Service Sire to Lot 66



Lot 67

Lot 67

B C R ALLEY 012M

3/4 SM 1/4 AN • 1/8/24 • ASA:4428078 • TATT00: 012M • POLLED • RED

KRJ DAKOTA OUTLAW G974

S A V BRILLIANCE 8077

NEXT LEVEL

X

HPF/AF/B&K MS ALLEY 311C

KRDL CAEDENCE C37

WHF/PRS/HPF ALLEY 247Y

CE	BW	WW	YW	ADG	MCE	MILK	MWW	STAY	DOC	CW	YG	MARB	BF	REA	API	TI
8.5	3.9	79.1	120.9	0.26	4.3	20.2	59.8	15.7	12	29	-0.41	0.06	-0.066	1.01	107.9	69.9

OFFERED BY WALROD CATTLE COMPANY

- This direct daughter of Next Level is tied to a very royal, red hided donor family, as WHF/PRS/HPF Alley 247Y would be her second maternal dam. 247Y was the 2013 NWSS Grand Champion Purebred Simmental Heifer and undeniably one of the most important red hided Simmental females in history!
- Besides her cow family, the photo highlights her elite features. Her neck rises high from the top of her blade, while her shoulder sits smoothly, allowing for a seamless transition to her forerib. She is huge bodied, with a big, square pin set to accent.
- The mating to the \$147,500 WINC All Right 213K could potentially yield a red hided calf, so bid with confidence!

AI BRED 3/31/25 TO WINC ALL RIGHT 213K (ASA: 4100635)

SAFE AI WITH HEIFER CALF PREGNANCY - EST. DUE 1/7/26



WHF/PRS/HPF ALLEY 247Y

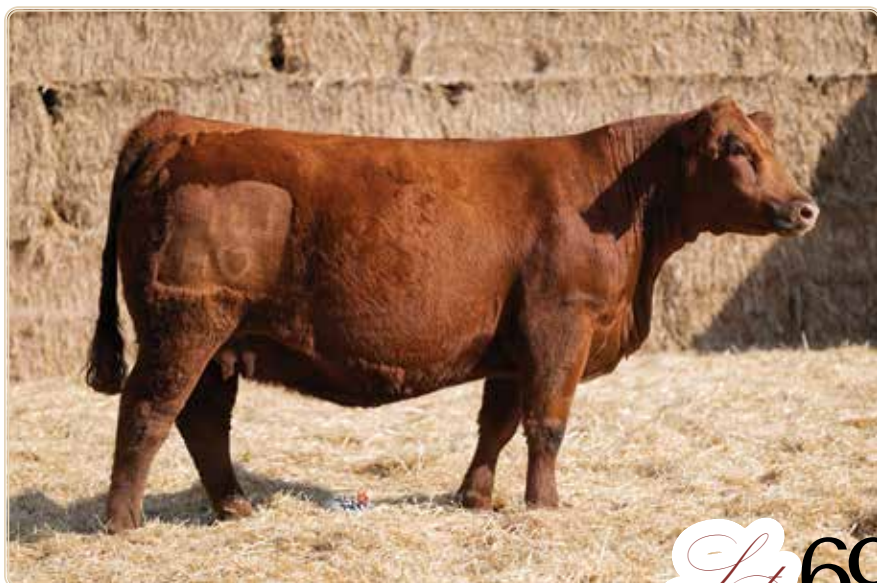
2013 NWSS Grand Champion Purebred Simmental Heifer
Maternal Granddam of Lot 67



Lot 68



HWGW ELLA E53-B26
Maternal Sister to Lot 68



Lot 69



UDE PROFIT 67F "CODE RED"
Sire of Lot 69

Lot 68

HWGW MISS LILA L26B-B26

PB SM • 10/1/23 • ASA:4335446 • TATT00: L26B • POLLED • RED

TJ HIGH CALIBRE 556B

MR HOC BROKER

SFI FIXIT J13F

SFI GW GO FOR BROKE

SFI MISS TURNIN HEADS

SFI YOU DEW IT GIRL

CE	BW	WW	YW	ADG	MCE	MILK	MWW	STAY	DOC	CW	YG	MARB	BF	REA	API	TI
9.5	2.3	76.4	113.9	0.23	4	22.4	60.4	13.7	6.6	38	-0.28	0.11	-0.07	0.7	121.4	75.8

OFFERED BY WALROD CATTLE COMPANY

- We couldn't agree more with the mating choice to GCC Night Owl 3104L on this red head. The MR HOC Broker influence is loud and proud as you study her angles and overall design of sheer quality and skeletal balance!
- Shape of muscle and body will never be an issue for this brood cow prospect, and we believe her generating potential to be as legit as any in the lineup.

AI BRED 3/31/25 TO GCC NIGHT OWL 3104L (ASA: 4284092)

SAFE AI WITH HEIFER CALF PREGNANCY - EST. DUE 1/7/26

Lot 69

HWGW MISS CODE RED L81-G11

PB SM • 11/30/23 • ASA:4559947 • TATT00: L81 • POLLED • RED

PROFIT

W/C LOADED UP 1119Y

UDE PROFIT 67F "CODE RED"

HWGW MISS GRACIE G11-E30

TJSC KANSA 823B

HWGW MISS ELECTRA E-30-A14

CE	BW	WW	YW	ADG	MCE	MILK	MWW	STAY	DOC	CW	YG	MARB	BF	REA	API	TI
9.3	2.7	78.9	110.7	0.2	4.5	18.5	57.9	12.3	5.9	25.5	-0.4	0.12	-0.081	0.82	118.5	76.8

OFFERED BY WALROD CATTLE COMPANY

- Profit imprints a distinctive look and build into all that he influences. That kind is generally bigger outlined, longer sided, strong topped, level and square hipped, with a hind leg that is near ideal. The head is generally chiseled, and their ear set is near exact from one to the next. W/C Loaded Up 1119Y is complementary in this equation and further strengthens what Profit does.
- This stout, bold, productive female embodies a very complete package, and once again, we look forward to the service on board. The GCC Night Owl 3104L cattle are safe at birth and have much more to offer beyond that.
- Study up and pay close attention.

AI BRED 3/31/25 TO GCC NIGHT OWL 3104L (ASA: 4284092)

SAFE AI WITH BULL CALF PREGNANCY - EST. DUE 1/7/26



SWC RED WAVE 376J
\$85,000 Sire of Lots 70 & 71



Lot 70



CBAR BD SARA 927W
Maternal Granddam of Lot 71



Lot 71

Lot 70

HWGW C-C MISS RED WAVE L80-B35

PB SM • 12/19/23 • ASA:4572786 • TATT00: L80 • POLLED • RED

CONLEY HIGH RISE F3

JM OL STEEL Y50

SWC RED WAVE 376J



M4/C-C MS HARD DRIVE B35

SWC GWENDOLYN 376G

SFI MISSFINAL DRIVE Z45P

CE	BW	WW	YW	ADG	MCE	MILK	MWW	STAY	DOC	CW	YG	MARB	BF	REA	API	TI
13.1	-0.2	61.7	85.7	0.15	6.7	21.8	52.5	16.4	8.7	15.6	-0.39	0.08	-0.071	0.75	127.7	69.8

OFFERED BY WALROD CATTLE COMPANY

- We appreciate the maternal advantages and presence that this daughter of SWC Red Wave 376J brings to any seed stock or breeding program.
- The SWC Red Wave 376J cattle have been praised for their exceptional calving ease and attractive appearance. His daughters are also proving to be excellent producers with strong fertility.
- We expect nothing less from this bold centered, big hiped, square ended breeding piece. The look and build of GCC Night Owl 3104L should only prove to be profitable and sensible on a female such as L80.

AI BRED 3/31/25 TO GCC NIGHT OWL 3104L (ASA: 4284092)

SAFE AI WITH HEIFER CALF PREGNANCY - EST. DUE 1/7/26

Lot 71

HWGW MISS RED WAVE L22-927J

PB SM • 11/2/23 • ASA:4559954 • TATT00: L22 • POLLED • RED

CONLEY HIGH RISE F3

MR HOC BROKER

SWC RED WAVE 376J



ADSF SARA JAY 927J

SWC GWENDOLYN 376G

CBAR BD SARA 927W

CE	BW	WW	YW	ADG	MCE	MILK	MWW	STAY	DOC	CW	YG	MARB	BF	REA	API	TI
9.7	1.8	69.1	97	0.17	4.4	21.2	55.7	15.2	5.8	16.7	-0.28	0.16	-0.059	0.51	124.2	72.8

OFFERED BY WALROD CATTLE COMPANY

- This direct daughter of the \$85,000 SWC Red Wave 376J traces back to a female that heavily influenced the Circle M Farms program of Rockwall, Texas, CBAR BD Sara 927W. 927W was selected from the CMFM Dispersion by Albert Sulak and family of Itasca, TX where she made her place a key component of the female base.
- The cattle from 927W were always advantaged when it comes to genuine beef cattle shape and build, much like this redhead. Cattle that are built stout and true from the ground up, stock that have the extras needed to withstand environmental pressures, especially in times of limited resources.
- L22 is a real-world beef female that should generate wherever she roams.

AI BRED 3/31/25 TO GCC NIGHT OWL 3104L (ASA: 4284092)

SAFE AI WITH HEIFER CALF PREGNANCY - EST. DUE 1/7/26



Lot 72



Lot 73



SFI MISS HOT SAUCE
Dam of Lot 73



SFI MISS ME O MY
Maternal Granddam of Lot 73

Lot 72

WWC JERALDINE 76L

PB SM • 10/13/23 • ASA:4354885 • TATT00: 76L • POLLED • RED

W/C LOADED UP 1119Y

SV BANDIT 803F

WWC JINX 49J

SV ILLUSION 015H

WAGR HARMONY 702T

TPHT ILLUSION D2Y

CE	BW	WW	YW	ADG	MCE	MILK	MWW	STAY	DOC	CW	YG	MARB	BF	REA	API	TI
9.9	1.9	65.3	98.1	0.2	4.9	19.3	52	14.5	9.9	28.6	-0.36	0.12	-0.068	0.85	121.1	70.2

OFFERED BY WINDWALKER CATTLE COMPANY

• The Windwalker Cattle Company females graze on pastures with varying terrain, and they are bred with selection pressure focused on their ability to succeed in that environment. Jay and Kathy have a set of cattle that work for them rather than them working for their cattle. It's straightforward management that has shaped the program into what it is today. The female base weans big calves and breed back within the ranch's calving window—plain and simple, with zero exceptions.

• 76L comes from an old school pedigree that includes sires like W/C Loaded Up 1119Y, MR HOC Broker, W/C Executive Order 8543B, Flying B Cut Above, and CNS Dream On L186. On her sire's side, she traces to a full sister of some of the top female producers in the business, including WAGR Dream Catcher 03R and WAGR Driver 706T.

• If you like your stock with some extra power, punch, and WDA, then this breeding piece should be on your short list for sale day. We promise you won't be disappointed when she enters production!

AI BRED 4/12/25 TO BAR CK RED EMPIRE 9153G (ASA: 3766616)

PE 4/24/25-6/10/25 TO WWC MAYNARD 23M (ASA: 4461720) & 6/10/25-7/14/25 TO

SFI EXTRA MILE K10 (ASA: 4098055)

SAFE AI - EST. DUE 1/19/26

Lot 73

HWGW MISS RB L90-H1

PB SM • 12/15/23 • ASA:4559949 • TATT00: L90 • POLLED • RED

W/C BANKROLL 811D

GEFF COUNTY O

W/C RED BIRD 269J

SFI MISS HOT SAUCE

W/C MISS ANGEL 2870Z

SFI MISS ME O MY

CE	BW	WW	YW	ADG	MCE	MILK	MWW	STAY	DOC	CW	YG	MARB	BF	REA	API	TI
13.5	1.2	69.5	104.8	0.22	6.3	20.4	54.9	9.6	8.2	29.2	-0.41	0.04	-0.063	1.04	114.9	72.5

OFFERED BY WALROD CATTLE COMPANY

• There is no question that this female will be a certified baldy maker and that the resulting calves will be saturated with desired industry quality!

• W/C Red Bird 269J is proving himself with each set of calves born. The cattle are vigorous and sensibly sized at birth, and perform from there on with plenty of look, shape, and density.

• Her dam is one of the very elite redheaded females produced in the Schaake program. As stated previously, Garren Walrod is a very good student of the game and has studied multiple programs throughout the country and seldom shies away from investment opportunities like SFI Miss Hot Sauce.

• She is laced with all the brood cow essentials and should prove to be a no miss investment!

AI BRED 3/31/25 TO GCC NIGHT OWL 3104L (ASA: 4284092)

SAFE AI WITH HEIFER CALF PREGNANCY - EST. DUE 1/7/26

Lot 74

M4/3R MS ONWARD 403M

PB SM • 1/27/24 • ASA:4415937 • TATTOO: 403M • HOMO POLLED • RED

CDI ABUNDANCE 391C

WS PROCLAMATION E202

CDI/NF HONOR GUARD 267H

M4/3R MS MOVING FORWARD J142

CDI MISS VERDICT 141C

M4 MS IMPULSE E6Z

CE	BW	WW	YW	ADG	MCE	MILK	MWW	STAY	DOC	CW	YG	MARB	BF	REA	API	TI
16.2	-1.4	84.2	125.3	0.26	8.4	26	679	172	171	35.6	-0.22	0.49	-0.043	0.7	1675	95.6

OFFERED BY M4 SIMMENTALS

• Here's a deep, square, broody designed redhead that comes with the essential beef business credentials on foot and on paper.

• A direct daughter of the popular CDI/NF Honor Guard 267H that offers an outcross genetic package with breeding flexibility aboard.

• The Flint Hills gem ranks within the top 10% for API and CE, the top 15% for TI, BW, MCE, and Marb, and keeps parameters in the top third of the breed for WW, YW, SGN, Milk, MWW, and Stay.

AI BRED 4/29/25 TO KBHR CHARGER K102 (ASA: 4104220)

PE 5/19/25-7/11/25 TO M4/3R REGIME 475M (ASA: 4415910)

SAFE AI WITH HEIFER CALF PREGNANCY - EST. DUE 2/5/26



Lot 74



M4/3R MS MOVING FORWARD J142

Dam of Lot 74

Lot 75

M4 MS DOMINANCE 910M

PB SM • 1/17/24 • ASA:4415898 • TATTOO: 910M • HOMO POLLED • RED

CDI ABUNDANCE 391C

HOOK'S DELEGATE 64D

CDI/NF HONOR GUARD 267H

M4 MS INFLUENCE 910G

CDI MISS VERDICT 141C

M4 MS IMPULSE E6Z

CE	BW	WW	YW	ADG	MCE	MILK	MWW	STAY	DOC	CW	YG	MARB	BF	REA	API	TI
16.5	-0.9	81	124.4	0.27	9	25	65.4	15.8	15.6	35.2	-0.43	0.47	-0.074	1.1	163.7	93.8

OFFERED BY M4 SIMMENTALS

• As we tour the country making herd visits, the most intriguing programs are those with a working cow herd that would be very similarly bred. These operations limit their sire groups, and the consistency is noticeable, especially within the mature cows. Gathering all three of these CDI/NF Honor Guard 267H daughters isn't a bad idea, especially if you are in search of red hided cattle with industry merit on board.

• 910M charts in the top 5% for CE, the top 10% MCE, and the top 15% API, TI, REA, and Marb. She is right for all that drives profit, that is necessary to meet the challenges of today's challenging marketplace.

AI BRED 5/2/25 TO KBHR CHARGER K102 (ASA: 4104220)

PE 5/19/25-7/11/25 TO M4/3R REGIME 475M (ASA: 4415910)

SAFE AI WITH BULL CALF PREGNANCY - EST. DUE 2/8/26



M4 MS IMPULSE E6Z

Maternal Granddam of Lots 74 & 75

Lot 76

M4 MS HONORARY 402M

1/2 SM 1/2 AR • 1/9/24 • ASA:4415903 • TATTOO: 402M • HOMO POLLED • RED

CDI ABUNDANCE 391C

NCJ COMING IN HOT 24E

CDI/NF HONOR GUARD 267H

SMOKY Y RILEY J6

CDI MISS VERDICT 141C

SMOKY Y RIDLEY 1635D

CE	BW	WW	YW	ADG	MCE	MILK	MWW	STAY	DOC	CW	YG	MARB	BF	REA	API	TI
12.6	0.7	80.4	127.6	0.29	7.9	23.4	63.5	16	15.6	22.9	-0.25	0.35	-0.034	0.7	136.2	82.5

OFFERED BY M4 SIMMENTALS

• A true red SimAngus daughter of CDI/NF Honor Guard 267H. Her dam was selected by Logan during his time at a western Kansas Red Angus operation shortly after college. The cattle in that operation grazed in multi-section pastures with limited resources and had to travel long distances for water. The calves that reached the weaning pen had achieved more than most cattle do in their lifetime. Logan had the vision to choose from the very top end during his employment, and we strongly agree that he knew what he was doing when he selected the dam of this bred female.

• This blood red female posts 13 traits in the top half of the business as well as both index values. History tells us that playing in the center is the safest thing we can do in life. Her genetic ledger indicates that balance will be the key to her longevity in production.

AI BRED 4/29/25 TO KBHR CHARGER K102 (ASA: 4104220)

PE 5/19/25-7/11/25 TO M4/3R REGIME 475M (ASA: 4415910)

SAFE AI WITH HEIFER CALF PREGNANCY - EST. DUE 2/5/26



Lot 76



CDI/NF HONOR GUARD 267H

Sire of Lot 75 & 76



Watch the Sale on CCI.live!

*The best, the fastest and most
comprehensive marketing & bidding tool!*

How to Bid Online...

- **As a buyer**, you do not need an account or to login to watch the sale but you must have a validated account to bid.
- After you are logged in, you must proceed to the sale page for any and every auction and click **"Get Buyer Number."** Some auctions require a pass-code to obtain a buyer number even after you are approved by CCI.live. Pass codes generally come from the sale manager or ranch for that particular sale.
- CCI.live will operate with ease on a **cellular device, laptop, desktop or tablet.**
- A **modern or current browser** is important and will make your experience better. You do not need to install the app on cellular devices to watch a sale. CCI.live is a browser-based application meaning it will play on most new browsers, but you can also download the CCI.live app at the Apple App Store or through Google Play.
- **For successful bidding you must have good Internet service!** It is very important to be stationary. If you are driving and bidding, expect to have some service issues. If you are stationary on a good device, with healthy Internet, expect a very successful bidding environment. If you have slow Internet watch the "asking price" on the screen - it is real time and refresh your browser if you feel like you have some lag.
- **Support line open during all sales. 405-400-9505** - Please contact the ranches for invoices and trucking.

Viewed around the world!



**SALE CATALOG, VIDEOS,
and LIVE BROADCAST...**
all at your fingertips from the sale page at
www.CCI.live! Watch live sales weekly!



www.CCI.live
(405) 400-9505 Text or Call
schedule@cci.live
Over 35 years in livestock marketing!

Notes





PO Box Z
De Soto, Kansas 66018

A landscape photograph of rolling green hills under a dramatic, cloudy sky. In the foreground, there are tall, golden-brown grasses. A small body of water is visible in the distance.

Legends OF THE FLINT HILLS

SATURDAY, NOVEMBER 29, 2025 - 12 P.M. CDT

WESTMORELAND, KANSAS

