



THE  
**MIDWEST MADE**  
ELITE FEMALE SALE

DECEMBER 12, 2025  
FRIDAY NIGHT: 6:00 PM



#### **SALE DAY SCHEDULE**

Friday, December 12, 2025  
Cattle on display all day  
4:30 PM - Dinner and Hospitality  
6:00 PM – JS Midwest Made Elite  
Female Sale Begins

#### **SALE LOCATION**

JS Simmentals Sale Facility  
9713 S 88th Ave W  
Prairie City, Iowa 50228

#### **VIEWING OF THE SALE OFFERING**

Thursday, December 11, 2025  
Cattle on display all day



**JUNIOR INCENTIVE PROGRAM**

Any junior member that purchases a heifer will receive 3 units of semen from the sire of their choice that is a member of the JS Herd Bull Battery!

**WATCH AND BID ONLINE AT**





Welcome to the 2025 edition of the Midwest Made Elite Female Sale,

As I sit down to write this, I can't help but reflect on the year we've had, the livestock we've bred, and most importantly the friendships we've made both in and out of the ring. It is always a true pleasure of ours to get to see these females go out and make a name for themselves in their new respective homes. We truly enjoy the privilege of working with new and old friends' year in and year out and put a heavy emphasis on service after the sale to ensure we do everything that we can for our customers to have the most successful and enjoyable experience that they so desire. We are passionate about what we do and want to help our customers achieve their goals.

I think I can personally speak for everyone on behalf of this year's set of females that we have assembled, that they are some of the very best we have ever offered. The careful embryo matings along with the addition of some new young faces to our donor arsenal combined with bulls from our stud battery along with many of the industry's leading sires have led us to these females that we present to you today. It's been all hands on deck this fall around the barn with countless hours put in prepping this set of females for your appraisal. Each year we set out with the same common goal in mind, producing the highest quality, soundest structured, and most eye appealing Simmental, SimGenetic, Angus, and Maine-Anjou cattle we can assemble. We continue to dig deep and add to our already highly prolific donor battery and know that at the end of the day these females will be ready to join yours. We could not be any more excited for the future of our operation and influence on yours!

With that being said, we would like to personally invite you out to the farm in Prairie City, Iowa this fall for your personal and careful inspection of this set of females that we have assembled. As always, we will have a selection of these females on display at the NAILE in Louisville, Kentucky. We would like to personally thank everyone who have stopped in this fall and reached out about the offering. We look forward to meeting with you to discuss your goals and aspirations this fall and as always please feel free to reach out to anyone of our team members with any questions pertaining to the offering. We hope you can join us December 12, 2025, here in Prairie City for the 2025 edition of the JS Simmentals Midwest Made Elite Female Sale.

Sincerely,

*Derek Counsell*

Herdsmen, JS Simmentals



### JS SIMMENTALS

Ken & Claudia Steenhoek (515) 979-9713

Jay, Dani, Chesney & Coy Steenhoek (515) 238-5938

Scott, Amy & Grady Grass (515) 689-1012

Derek & Callie Counsell, Herdsmen (641) 715-4138

Jeff Williams, Herdsman (402) 380-9049



## SALE DAY CONTACTS

Jay Steenhoek (515) 238-5938  
Ken Steenhoek (515) 979-9713  
Scott Grass (515) 689-1012  
Derek Counsell (641) 715-4138  
Jeff Williams (402) 380-9049

## AUCTIONEER

Col. Jered Shipman (806) 983-7226

## SALE MANAGEMENT

Innovation AgMarketing, LLC  
Graham Blagg (530) 913-6418  
Jered Shipman (806) 983-7226  
Tim Anderson (605) 682-9343

## RING STAFF

Tom Rooney, Special Assignment (515) 491-6025  
Kent Jaecke, Special Assignment (405) 408-2440  
Shane Ryan, Special Assignment (309) 371-7490

## MARKETING AGENTS

Dalton Lundy (502) 727-6898  
Thomas Lundy (502) 471-0354  
Buddy Robertson (580) 747-7000  
Ryan Haefner (815) 499-0522  
Kelly Schmidt (406) 599-2395

## FERTILITY GUARANTEE

Females will sell in correlation with their respective breed associations. Heifers will be sold with the guarantee of a pregnancy or an embryo. All females are sold as sound breeders. However, if we feel that a heifer has been fed to an extreme level of obesity, we will hold the feeder responsible for any reproductive problems. Seller reserves the right to take possession of any animal(s) that presents difficulty conceiving before a sale credit is issued.

## SEMEN

All semen has been collected and stored professionally by Nichols Cryo Genetics in Maxwell, Iowa. Please contact the office to arrange pick-up or shipping once all semen has been paid for in full. Buyer pays number of units x bid price. All costs associated with shipping will be the responsibility of the buyers.

## EMBRYOS

All embryos will be released once paid for in full. JS Simmentals will guarantee 1 60-day pregnancy per package of 3 embryos if transferred by a certified embryologist. Buyer pays number of embryos x bid price. All costs associated with shipping will be the responsibility of the buyers.

## HERD HEALTH

All females have been bangs vaccinated and are tagged with an individualized EID Button. All have been vaccinated with Enforce, Once PMH, poured with Clean-Up, Dewormed, Collison microplasma vaccine, Multimin 90, and Vision 7 with Spur and Somnus. All females have been tattooed with the bangs shield, as well as their corresponding tattoo identification.

## TERMS AND CONDITIONS

All lots sell in accordance with the suggested guidelines of the American Simmental Association or their respective breed association. For updated EPDs and information please visit [www.simmental.org](http://www.simmental.org). Announcements made sale day from the block during the sale take precedence over printed material in this catalog. Payment will be accepted in the form of cash, cashier's check, or check. All cattle must be paid for prior to release. All funds are to be paid to Innovation AgMarketing, LLC in U.S. currency. No cattle will be transferred, delivered, or released without full payment. In the event you need expedited registration paper transfers please make plans to pay in full on sale day. All sales are final.

## ANNOUNCEMENTS

A supplement sheet will be available sale day with updated information, corrections and additional information. This sheet and any announcements made sale day and from the auction block during the sale will take precedence over printed material associated with this sale.

## LIABILITY

JS Simmentals, Innovation AgMarketing, LLC, and authorized sale personnel assume NO liability for injury, accident, or damage to persons or personal property. All persons who attend the sale do so at their own risk.

## NOTE TO BUYERS

JS Simmentals reserves the right to two successful flushes with a minimum of 12 embryos, unless otherwise noted. This will be done at the sellers cost and buyers convenience. We also reserve the right to create a cell line or clone any female in the offering. Disposition, quality, soundness will become the responsibility of the buyer when the animal leaves JS Simmentals. We do recommend purchasing insurance from the listed agents at the conclusion of the offering for further protection.

## INSURANCE

Jame Secondino-Krieger (812) 208-0956  
Anna Krieger (269) 470-7553

## LODGING

Hampton Inn & Suites  
215 Adventureland Dr NW - Altoona, IA 50009  
(515) 967-5774  
Holiday Inn & Suites Altoona-Des Moines  
165 Adventureland Dr NW - Altoona, IA 5009  
(515) 967-1855

## AIR TRAVEL

Des Moines International Airport – 31 Miles  
Omaha International Airport – 161 Miles  
Kansas City International Airport – 161 Miles

## PHOTOGRAPHY

John Reasor, Sale Photos & Videos (423) 290-6002  
Callie Counsell, JS Simmentals Social Media (859) 699-3893  
Michelle Helm, Creative Photos (405) 368-3180

## CATALOG DESIGN

THM Promotions, Tracy McMurphy (806) 679-0231



## Bid Live Online

**[www.CCI.live](http://www.CCI.live) - Watch the Sale**

(405) 400-9505 Text/Call - [schedule@cci.live](mailto:schedule@cci.live)  
Find us on the App Store and Google Play  
Over 35 years in livestock marketing!





*I***NNOVATION**  
— AgMarketing, LLC —

As time progresses, change becomes inevitable. This change might be to simplify or streamline processes, to save money, or to find a quicker route to the end goal. Breeding livestock is a time-consuming endeavor, especially when focusing on the cattle and remaining disciplined. While new technologies and husbandry advancements haven't shortened the natural production intervals set by mother nature, they have accelerated the sorting process through genomics and IVF technology. In the registered cattle industry, we're nearing the point where we may eliminate the working cow herd entirely, as we continue to concentrate solely on the elite. Don't misunderstand us; we value the great ones as much as anyone. But what happens when every breeder achieves that top 1%er they've been aiming for? If your focus is only on physical quality, how can you be sure how they will perform in production? Where will breeders find the next potential genetic outcross? How will cattle maintain progress in productivity and performance without contemporary groups? And how can we make our operations more profitable and sustainable if we completely eliminate the working cow herd? The time is now to invest in females that offer significant value in production and will stand the test of time, like the cow families that can be identified between the covers of this sale catalog!

Ken and Jay Steenhoek have been Simmental breeders for over thirty years. Their pursuit of quality and excellence has always been relentless, and their dedication to being outstanding breeders remains strong. Although their operation has used advanced technologies like superovulation and IVF, they have maintained a genuine breeding program through careful selection and discipline. The JS brand has acquired or bred the foundation donor dams featured in this sale book, and they also own 95% of the sires in this sale offering. The time and research needed to select the right sires and confidently mate them with each donor is not for the faint of heart. As the show heifer marketplace continues to evolve, offerings like the Midwest Made will become rare, as this annual event features multiple matings of full and maternal sisters, all bred and raised by the Steenhoek family. The operation accomplishes this through discipline and relentless faith in the genetics that call home to Prairie City, Iowa.

The JS Family and crew believe in what they do every day. Their dedication to making each generation better is pursued with a work ethic comparable to a professional athlete in season, except the season at JS runs 24/7/365. The commitment to improvement and the drive to be the best are in the DNA of everyone involved. If you haven't invested in the JS brand, we strongly encourage you to consider doing so. If you have youth exhibitors or are simply looking for the right female investment, the customer service experience will be second to none. Your family will become part of the Steenhoek family, and you will have a support staff like they are your own employees. Your investment will be in the experience, and cattle will be part of that experience.

We recommend a pre-sale visit to view the offering. If that's not possible, we look forward to seeing everyone on December 12, 2025, in Prairie City, Iowa, for the Friday evening event. The food and hospitality will be abundant, and the fellowship enjoyable. Please feel free to contact any member of the Steenhoek family or crew for more information about the best offering they have ever assembled for public appraisal. If you need assistance with sight-unseen purchasing or additional details about the cattle featured in this sale book, we encourage you to reach out to any affiliated team member of Innovation AgMarketing.

Thank you for your valuable time and consideration for the offering, enjoy the cattle.

*Graham Blagg*

*Jered Shipman*

*Tim Anderson*

# *Open*

FEMALES







**WHF SUMMER 365C**  
2017 NAILE Grand Champion Purebred Simmental Heifer  
Prolific Dam of Lots 1-15



**HARKERS UNLEASHED**  
2022 & 2023 Cattlemen's Congress Grand Champion  
Percentage Simmental Bull  
Sire of Lots 1-4



**CCS/JS SUMMER 22N**  
2025 American Royal Spring Calf Champion  
Percentage Simmental Heifer

## CCS/JS SUMMER 22N

SILVEIRAS STYLE 9303

**HARKERS UNLEASHED**

HILB MISS OO LA LA B412

CCR WIDE RANGE 9005A

**WHF SUMMER 365C**

WHF ANDIE 365A

**LOT 1**

**3/4 SM 1/4 AN**

REG: 4553600

BD: 4/3/25 TATTOO: 22N

CE	BW	WW	YW	MCE	MLK	CW	MRB	BF	REA	API	TI
7.7	3.7	82.1	123.6	4.8	16.4	35.8	0.15	-0.06	0.63	102.5	73

- A quadrant of females that are the result of arguably the most prolific and consistent mating from the legendary WHF Summer 365C! Sired by the now deceased Harkers Unleashed, these four beauties are FULL SISTERS to another set of females that commanded the attention of the nation's top show families and breeders in 2023.
- 22N is the reigning 2025 Spring Calf Champion Percentage Simmental Female of the American Royal. She's no stranger to purple as her build and presence indicate.
- This diva is stout to the surface, flexible in motion, with a very collected silhouette. She's long and extended with depth and shape that offers a wealth of dimension throughout. In our humble opinion, we think that she is as right for the business as any of her siblings to this point within the mating.
- A true sale feature that will compete at any level!

MIDWEST MADE ELITE FEMALE SALE





CCS/JS SUMMER 47L

2024 OH State Fair Reserve Grand Champion  
Percentage Simmental Heifer  
\$70,000 Full Sister to Lots 1-4



CCS/JS SUMMER 50L

2024 IA State Fair Grand Champion  
Percentage Simmental Heifer  
\$40,000 Full Sister to Lots 1-4



CCS/JS SUMMER 4N

2025 American Royal Reserve Spring Calf Champion  
Percentage Simmental Heifer

## CCS/JS SUMMER 4N

SILVEIRAS STYLE 9303

HARKERS UNLEASHED

HILB MISS OO LA B412

CCR WIDE RANGE 9005A

WHF SUMMER 365C

WHF ANDIE 365A

LOT 2

3/4 SM 1/4 AN

REG: 4553599

BD: 3/10/25 TATTOO: 4N

CE	BW	WW	YW	MCE	MLK	CW	MRB	BF	REA	API	TI
7.7	3.7	82.1	123.6	4.8	16.4	35.8	0.15	-0.06	0.63	102.5	73

- 4N is a March daughter of the late Harkers Unleashed, which is a FULL SISTER to the \$70,000 CCS/JS Summer 47L female that was selected by the Liggett Family of Ohio in 2023. 47L went on to be the 2024 Ohio State Fair Reserve Grand Champion Percentage Simmental Female in both the open and junior shows.
- We appreciate the stunning build and presence of this elite SimAngus show prospect!
- She has been exhibited with success, just like Lot 1, as she is the 2025 American Royal Spring Heifer Calf Reserve Champion Percentage Female.
- Another female that is supported by the immortal WHF Summer 365C donor dam, one of the most important females in the history of the breed!

DECEMBER 12, 2025 IN PRAIRIE CITY, IOWA





LOT 3 CCS/JS SUMMER 1N

- 1N is the later March born sister that could be the very best of the four when maturity is reached. She's a bit more elevated in her chest floor, smoother in her transitions, and sets to the surface with a shot more skeletal width.
- This quadrant of stock would be full sisters to CCS/JS Summer 50L, which was the \$40,000 selection of Megan Brown's that went on to claim Champion honors of the 2024 Iowa State Fair Percentage Simmental Show.

CCS/JS SUMMER 49L  
\$30,000 Full Sister to Lots 1-4

LOT 4 CCS/JS SUMMER 2N

- The final of the four flush sisters sired by the late Harkers Unleashed from the proven WHF Summer 365C matriarch is CCS/JS Summer 2N.
- A full sister, CCS/JS Summer 76M, was selected by the Ferguson firm of Ohio in 2024 at a final hammer price of \$14,000.
- She is supported by a mating that generated stock with excellent physical qualities, enhanced with the extras in terms of body mass and flexibility.

CCS/JS SUMMER 46L  
\$27,000 Full Sister to Lots 1-4

## CCS/JS SUMMER 1N

SILVEIRAS STYLE 9303

HARKERS UNLEASHED

HILB MISS OO LA LA B412

CCR WIDE RANGE 9005A

WHF SUMMER 365C

WHF ANDIE 365A

## LOT 3

3/4 SM 1/4 AN

REG: 4553597

BD: 3/21/25 TATTOO: 1N

## CCS/JS SUMMER 2N

SILVEIRAS STYLE 9303

HARKERS UNLEASHED

HILB MISS OO LA LA B412

CCR WIDE RANGE 9005A

WHF SUMMER 365C

WHF ANDIE 365A

## LOT 4

3/4 SM 1/4 AN

REG: 4553598

BD: 2/25/25 TATTOO: 2N

CE	BW	WW	YW	MCE	MLK	CW	MRB	BF	REA	API	TI
7.7	3.7	82.1	123.6	4.8	16.4	35.8	0.15	-0.06	0.63	102.5	73

CE	BW	WW	YW	MCE	MLK	CW	MRB	BF	REA	API	TI
7.7	3.7	82.1	123.6	4.8	16.4	35.8	0.15	-0.06	0.63	102.5	73





LOT 5 CCS/JS SUMMER 7N



LOT 6 CCS/JS SUMMER 43N

- We introduce a pair of sisters that are supported by one of the most dynamic matings in the history of the JS Simmentals breeding program! CCS/JS Summer 7N is a FULL SISTER to the 2024 American Royal Grand Champion Purebred Simmental Heifer, CCS/JS/LFTZ Summer L378! L378 was also selected as the 2024 AJSA National Classic 3rd Overall Purebred Simmental Heifer for Brody Wenell.
- Another full sister to this duo, CCS/JS Summer 33H, was the 2021 NAILE Grand Champion Purebred Simmental Heifer for KayLee Langford.
- 7N has the OUT THERE pieces to get the job done! She is long and high tying in her neck attachment, smooth from blade to forerib, flawless from chest to flank, strong in her pattern lines, and possesses one of the very good hip and hind leg designs in the offering.
- A truly breathtaking female that is supported by one of the most dominant matings in the Simmental breed!



CCS/JS SUMMER 33H

2021 NAILE Grand Champion Purebred Simmental Heifer  
\$32,000 Full Sister to Lots 5 & 6

- In the 2024 version of the Midwest Made, a full sister to lots 4 and 5, CCS/JS Summer 7M, was selected by the Mundy Family of Tennessee for a gavel price of \$24,500.
- 43N may be as different as any from this historical and profitable mating. Her body shape is plentiful as she is deep in her side, soft and seamless in her underline, and comes big in her upper rib as well. Still flexible, still attractive, and still a direct daughter of WHF Summer 365C!



CCS/JS/LFTZ SUMMER L378

2024 NAILE Grand Champion Purebred Simmental Heifer  
\$40,00 Full Sister to Lots 5 & 6

## CCS/JS SUMMER 7N

YARDLEY UTAH Y361

W/C RELENTLESS 32C

MISS WERNING KP 8543U

CCR WIDE RANGE 9005A

WHF SUMMER 365C

WHF ANDIE 365A

LOT 5

PB SM

REG: 4572804

BD: 4/3/25 TATTOO: 7N

CE	BW	WW	YW	MCE	MLK	CW	MRB	BF	REA	API	TI
9.2	3	77.8	104	4.7	15	18.3	-0.06	-0.07	0.91	103.4	71

## CCS/JS SUMMER 43N

YARDLEY UTAH Y361

W/C RELENTLESS 32C

MISS WERNING KP 8543U

CCR WIDE RANGE 9005A

WHF SUMMER 365C

WHF ANDIE 365A

LOT 6

PB SM

REG: 4572805

BD: 3/13/25 TATTOO: 43N

CE	BW	WW	YW	MCE	MLK	CW	MRB	BF	REA	API	TI
9.2	3	77.8	104	4.7	15	18.3	-0.06	-0.07	0.91	103.4	71

DECEMBER 12, 2025 IN PRAIRIE CITY, IOWA



LOT 7 CCS/JS SUMMER 67N

- This female initiates a tribe of full sisters with the sire power of Reckoning 711F from the WHF Summer 365C matriarch!
- A FULL SISTER, CCS/JS Summer 34M was the \$39,000 selection of the Jarr Family in the 2024 Midwest Made Sale offering.
- 67N offers a look of arrogance and pride! She is a high headed, big footed, ground pounder that moves with substantial flexibility and skeletal correctness. The amount of substance she offers in terms of bone and density is as incredible as the total package.

CCS/JS SUMMER 34M  
\$39,000 Full Sister to Lots 7-8

LOT 8 CCS/JS SUMMER 42N

- 42N ties high at the top of her neatly laid in shoulder. She offers tremendous progression of depth through her rear rib and flank. She is big hiped, stout pinned, square from hock to ground, and sets to the surface with confidence.
- Body depth and shape will never go out of style, especially within this genetic lineup. Both sides of the pedigree are laced with the perfect balance of body and skeletal quality!

CCS/JS SUMMER 36M  
\$17,000 Full Sister to Lots 7-8

## CCS/JS SUMMER 67N

W/C RELENTLESS 32C

RECKONING 711F

RWA KRISHA-ET

CCR WIDE RANGE 9005A

WHF SUMMER 365C

WHF ANDIE 365A

LOT 7  
PB SM

REG: 4572809

BD: 3/17/25 TATTOO: 67N

CE	BW	WW	YW	MCE	MLK	CW	MRB	BF	REA	API	TI
7.5	2.8	77.3	102.9	4.7	15.3	16	-0.06	-0.05	0.78	106.3	70.1

## CCS/JS SUMMER 42N

W/C RELENTLESS 32C

RECKONING 711F

RWA KRISHA-ET

CCR WIDE RANGE 9005A

WHF SUMMER 365C

WHF ANDIE 365A

LOT 8  
PB SM

REG: 4572810

BD: 4/17/25 TATTOO: 42N

CE	BW	WW	YW	MCE	MLK	CW	MRB	BF	REA	API	TI
7.5	2.8	77.3	102.9	4.7	15.3	16	-0.06	-0.05	0.78	106.3	70.1





**LOT 9 CCS/JS SUMMER 35N**



**LOT 10 CCS/JS SUMMER 46N**

- 35N is a standout blaze faced female from the Reckoning 711F sired flush from the dynamic WHF Summer 365C donor dam. She is bold ribbed, deep sided, with flawless angles and seamless transitions.
- This sister is square, big in her pin set, stout from behind, and comes with extra bone and foot. We certainly anticipate big things in the donor pen after her exhibition career is complete.
- CCS/JS Summer 36M, a full sister to 35N, was the \$17,000 selection for the Diamond J Simmental outfit of Kaufman, Texas, in the 2024 edition of the Midwest Made.



**CCS/JS/LFTZ SUMMER L378**  
2024 American Royal Grand Champion  
Purebred Simmental Heifer  
\$40,000 3/4 Sister in Blood to Lots 7-8

- Make sure to check out the video on this female. She has made big strides since picture day, and we expect her to find many friends among those who visit the offering in person.
- 46N is definitely the wildest in terms of features and build! Sharp and chiseled in her front third as she ties with perfection from her blade. She is huge and open in her rib design, big in her back and hip shape, and sets on running gear that will allow her to be part of the profit equation for the years to come.



**CCS/JS SUMMER 61K**  
\$60,000 Maternal Sister to Lots 1-15

### CCS/JS SUMMER 35N

#### **LOT 9** **PB SM**

REG: 4572807  
BD: 4/2/25 TATT00: 35N

W/C RELENTLESS 32C  
**RECKONING 711F**  
RWA KRISHA-ET  
CCR WIDE RANGE 9005A  
**WHF SUMMER 365C**  
WHF ANDIE 365A

CE	BW	WW	YW	MCE	MLK	CW	MRB	BF	REA	API	TI
7.5	2.8	77.3	102.9	4.7	15.3	16	-0.06	-0.05	0.78	106.3	70.1

### CCS/JS SUMMER 46N

#### **LOT 10** **PB SM**

REG: 4572808  
BD: 2/24/25 TATT00: 46N

W/C RELENTLESS 32C  
**RECKONING 711F**  
RWA KRISHA-ET  
CCR WIDE RANGE 9005A  
**WHF SUMMER 365C**  
WHF ANDIE 365A

CE	BW	WW	YW	MCE	MLK	CW	MRB	BF	REA	API	TI
7.5	2.8	77.3	102.9	4.7	15.3	16	-0.06	-0.05	0.78	106.3	70.1



LOT 11 CCS/JS SUMMER 62N

- Revelation 2K is proving his purpose to the industry with each calf crop. The ring presence of his cattle is undeniable, and as he gets sampled on more and more of the breed's best, more progeny will surface to the backdrop status.
- CCS/JS Summer 62N offers a unique build and presence, which are exactly what one would expect from this genetic blend!
- We believe in breed character, but we also believe that the trendsetters are not intended to resemble the general population.
- She is a Purebred Simmental female with the eccentric phenotype credentials to be of supreme consideration, just as her dam was on the tan bark. The visual images tell you everything one needs to know, so you may as well come view in person to solidify her investment merit!

REVELATION 2K  
Sire of Lots 11 & 12

- The big pieces that this blaze faced female has to offer are hard to come by. With the track record of her very prolific dam, those pieces will most definitely come together. The WHF Summer 365C cattle have been proven to be later maturing, with their dominance established as heavy breeds.
- This female is dense footed, deep heeled, stout boned, thick made, bold ribbed, and undoubtedly ideal from her shoulder forward. Invest with confidence in one of the first two daughters of Revelation 2K from the WHF Summer 365C matriarch.

CCS/JS SUMMER 50F  
2019 AJSA National Classic Reserve Grand  
Champion Bred & Owned Heifer  
Maternal Sister to Lots 1-15

LOT 12 CCS/JS SUMMER 52N

## CCS/JS SUMMER 62N

TL REVENANT 35  
REVELATION 2K  
RIED BANDED MAE  
CCR WIDE RANGE 9005A  
WHF SUMMER 365C  
WHF ANDIE 365A

LOT 11  
PB SM

REG: 4572814  
BD: 3/24/25 TATT00: 62N

CE	BW	WW	YW	MCE	MLK	CW	MRB	BF	REA	API	TI
9.2	2.5	77.6	104.9	4.9	15.3	20.3	-0.17	-0.08	0.77	97.8	68.3

## CCS/JS SUMMER 52N

TL REVENANT 35  
REVELATION 2K  
RIED BANDED MAE  
CCR WIDE RANGE 9005A  
WHF SUMMER 2K  
WHF ANDIE 365A

LOT 12  
PB SM

REG: 4572815  
BD: 4/8/25 TATT00: 52N

CE	BW	WW	YW	MCE	MLK	CW	MRB	BF	REA	API	TI
9.2	2.5	77.6	104.9	4.9	15.3	20.3	-0.17	-0.08	0.77	97.8	68.3



## CCS/JS SUMMER 57N

JSUL SOMETHING ABOUT MARY 8421

R/C SFI CREEDENCE 417J

SFI LOVE ME LATER A9X

CCR WIDE RANGE 9005A

WHF SUMMER 365C

WHF ANDIE 365A

LOT 13

PB SM

REG: 4572812

BD: 4/6/25 TATTOO: 57N

CE	BW	WW	YW	MCE	MLK	CW	MRB	BF	REA	API	TI
9.5	3.2	82.3	121.8	4.3	14.6	28.4	-0.21	-0.09	0.84	100.4	70.3

- R/C SFI Credence 417J continues to prove his validity as a sire, especially when blended with the maternal prowess of WHF Summer 365C.
- 57N is a bigger outlined, deep sided, sound constructed female with a level pin set and an ideal hind leg. She offers the look of the maternally driven kind that will generate in production.
- Her full sister, CCS/JS Summer 8M, commanded \$24,500 in the 2024 Midwest Made and was selected and campaigned by longtime friends and customers of the program, the Zika Family.



LOT 13 CCS/JS SUMMER 57N

## CCS/JS SUMMER 65N

HPF QUANTUM LEAP Z952

WLE COPACETIC E02

CMFM JOY 02ZB

CCR WIDE RANGE 9005A

WHF SUMMER 365C

WHF ANDIE 365A

LOT 14

PB SM

REG: 4572811

BD: 4/21/25 TATTOO: 65N

CE	BW	WW	YW	MCE	MLK	CW	MRB	BF	REA	API	TI
11	2.2	83.7	121.4	6.1	9.2	23.8	-0.06	-0.09	0.86	107.6	75.7

- The mating to WLE Copacetic E02 with WHF Summer 365C has produced several sale features through the history of the Midwest Made event. In the 2022 offering, a \$62,000 female was selected by Golden Acres Simmentals and Udell Cattle Company. Another full sister, CCS/JS Summer 39L, sold for \$22,000 in The Vision Elite Bred Female Sale this past January.
- It's a mating that continues to generate each year, and the crew expects nothing less from this year's lone daughter of the genetic blend. 65N is an exotic, high speed version of the combination! This diva is set high from her shoulder in her neck attachment, with a set of authority and confidence to her hind leg. She is big in her pin set, bold in her upper rib, and takes to the pen with arrogance.



LOT 14 CCS/JS SUMMER 65N

## CCS/JS SUMMER 17N

SO REMEDY 7F

HARKERS MEDICINE MAN

CELL TRIXIE 0105H

CCR WIDE RANGE 9005A

WHF SUMMER 365C

WHF ANDIE 365A

LOT 15

PB SM

REG: 4572813

BD: 4/11/25 TATTOO: 17N

CE	BW	WW	YW	MCE	MLK	CW	MRB	BF	REA	API	TI
8	3.8	82.5	119.2	4.3	18.3	38.6	-0.04	-0.09	0.92	99.8	73.8

- The Freshman Class from the young JS Simmentals herd sire, Harkers Medicine Man, is proving to be successful when it comes to appeal and construction.
- This elite baldy female is elevated in her chest floor, flat and clean through her neck with a head of maternal quality. From her shoulder back, she is bold through her rib shape, stout in her pin set, and comes with more bone and substance to the surface than several of her maternal sibs in this offering.
- Her unforgettable markings will draw attention. Attention to detailed evaluation will work in her favor when an evaluator worth their salt breaks this one down into the positives she has to offer to the business. Please keep in mind that she will always be a direct daughter of one of the breed's greatest!



LOT 15 CCS/JS SUMMER 17N



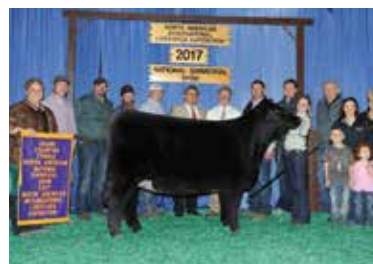
LOT 16 CCS/JS GUCCI 48N

- The pedigree reads true from one sister to the next as we set sail on the offering contributed by the little sister of WHF Summer 365C, WHF Gucci 366F, sired by Revelation 2K.
- 2K assisted in the production of two official "smoke shows" in lots 16 and 17!
- On photo day, both were a pinch green, but both offer the build and quality of those that gather the hardware and are draped in the darker shade of purple!
- 48N is impeccable in her lines and transitions! She is a high necked, great headed female that builds a silhouette of elegance, femininity, and strength of lines. She's ultra deep through her center body and flank and sets to the surface with ideal mobility.

JS DOUBLE OR NOTHING 4K  
\$165,000 Maternal Brother to Lots 16-20

LOT 17 CCS/JS GUCCI 40N

- The second of the full sisters with the influence of the Schaeffer stud and WHF Gucci 366F is certainly not second in quality.
- Pick your poison on the two siblings as we see them as two types that differ without sacrificing quality or competitive value.
- The snip nosed genetic version has the advantages of shape and turn to her muscle pattern and rib design with a similar build and presence in comparison to her sister that sells as lot 16.
- Regardless of preference, high quality livestock is up for appraisal and either should achieve the goals you set for your investment expectations, especially in production.

WHF SUMMER 365C  
2017 American Royal Supreme Champion  
Junior Breeding Heifer  
Full Sister to Dam of Lots 16-20

## CCS/JS GUCCI 48N

TL REVENANT 35  
REVELATION 2K  
RIED BANDED MAE  
CCR WIDE RANGE 9005A  
WHF GUCCI 366F  
WHF ANDIE 365A

LOT 16  
PB SM

REG: 4572819  
BD: 3/12/25 TATTOO: 48N

CE	BW	WW	YW	MCE	MLK	CW	MRB	BF	REA	API	TI
10	2.7	77.8	111	4.7	17.1	22.7	-0.07	-0.06	0.87	106.6	71.5

## CCS/JS GUCCI 40N

TL REVENANT 35  
REVELATION 2K  
RIED BANDED MAE  
CCR WIDE RANGE 9005A  
WHF GUCCI 366F  
WHF ANDIE 365A

LOT 17  
PB SM

REG: 4572820  
BD: 2/25/25 TATTOO: 40N

CE	BW	WW	YW	MCE	MLK	CW	MRB	BF	REA	API	TI
10	2.7	77.8	111	4.7	17.1	22.7	-0.07	-0.06	0.87	106.6	71.5



## CCS/JS GUCCI 25N

SO REMEDY 7F

HARKERS MEDICINE MAN

CELL TRIXIE 0105H

CCR WIDE RANGE 9005A

WHF GUCCI 366F

WHF ANDIE 365A

## LOT 18

PB SM

REG: 4553601

BD: 3/23/25 TATTOO: 25N

CE	BW	WW	YW	MCE	MLK	CW	MRB	BF	REA	API	TI
8.8	4	82.7	125.3	4.1	20.1	41.1	0.06	-0.08	1.02	108.6	77

- The influence of SO Remedy 7F and SC Pay The Price C11 found within Harkers Medicine Man shows strong and true throughout his progeny as they offer quality from every aspect of production.
- How many cattlemen and women view an offering like this and give thought about production value and generating potential in each of these open heifers? Something to think about as you evaluate this elite offering of genetics and cow families from a "true" breeding program.
- We appreciate the presence and build of this particular female. Her pattern is seamless and free of fault. In motion, she is collected but flexible off all corners with the ideal balance of body and muscle.



LOT 18 CCS/JS GUCCI 25N



CCS/JS GUCCI 25N  
2025 American Royal Reserve Spring Calf  
Champion Purebred Simmental Heifer

## CCS/JS GUCCI 27N

SO REMEDY 7F

HARKERS MEDICINE MAN

CELL TRIXIE 0105H

CCR WIDE RANGE 9005A

WHF GUCCI 366F

WHF ANDIE 365A

## LOT 19

PB SM

REG: 4572818

BD: 2/18/25 TATTOO: 27N

CE	BW	WW	YW	MCE	MLK	CW	MRB	BF	REA	API	TI
8.8	4	82.7	125.3	4.1	20.1	41.1	0.06	-0.08	1.02	108.6	77

- Do not discount this female for not having a photo. Some stock doesn't want to be pictured, but her video will tell the story of what you aren't able to see in print.
- Genetically, she ties some of the industry's greats into a complete individual who has generating potential equal to any in the lineup.
- She is flexible on the go, dense in her kind, with the substance and shape needed to be a necessary consideration for most families that compete.



LOT 19 CCS/JS GUCCI 27N

## CCS/JS GUCCI 50N

HPF QUANTUM LEAP Z952

WLE COPACETIC E02

CMFM JOY 02ZB

CCR WIDE RANGE 9005A

WHF GUCCI 366F

WHF ANDIE 365A

## LOT 20

PB SM

REG: 4572817

BD: 3/10/25 TATTOO: 50N

CE	BW	WW	YW	MCE	MLK	CW	MRB	BF	REA	API	TI
11.8	2.4	83.9	127.5	5.9	11	26.2	0.04	-0.08	0.96	116.5	78.9

- Here's one of those quality, genetic gems that hasn't been offered in volume from the discriminating JS Simmentals firm. A female that possesses as much breeding value as she does value for the showing venues across the country.
- A maternal, functional female with a look of productivity. She is bold in her rib shape and genuine in her skeletal width. The WLE Copacetic E02 daughters excel in production, offering the highest generating potential for those who select sires with equal discipline and standards.



LOT 20 CCS/JS GUCCI 50N



JS DAIRY QUEEN 57G  
Dam of Lots 21-26



LOT 21 CCS/JS DQ 57G 44N



LOT 22 CCS/JS DQ 57G 45N



LOT 23 CCS/JS DQ 57G 63N

## CCS/JS DQ 57G 44N

EGL FIRESTEEL 103F  
WHF/JS/CCS WOODFORD J001  
WHF SUMMER 365C  
MR HOC BROKER  
JS DAIRY QUEEN 57G  
CLRS DAIRY QUEEN 606D

## LOT 21

PB SM

REG: 4572822

BD: 2/20/25 TATTOO: 44N

CE	BW	WW	YW	MCE	MLK	CW	MRB	BF	REA	API	TI
11.4	2.3	79.9	112.7	4.4	16.4	28.9	0.18	-0.06	0.56	134.1	78.9

- An extremely high-quality trio of ET flushmate sisters that are from the impressive JS Dairy Queen 57G donor, one of the all-time most unique daughters of CLRS Dairy Queen 606D donor. A full sister to 57G, JS Dairy Queen 56G, was competitively exhibited by the Bayer family of Wisconsin.
- The sire of the 44N, 45N, and 63N is the widely popular WHF/JS/CCS Woodford J001, the 2023 NAILE Grand Champion Percentage Simmental Bull!
- 44N is slender neck, flat shouldered, long and deep in her side, and huge in her bone and hoof shape.

## CCS/JS DQ 57G 45N

EGL FIRESTEEL 103F  
WHF/JS/CCS WOODFORD J001  
WHF SUMMER 365C  
MR HOC BROKER  
JS DAIRY QUEEN 57G  
CLRS DAIRY QUEEN 606D

## LOT 22

PB SM

REG: 4572823

BD: 3/9/25 TATTOO: 45N

CE	BW	WW	YW	MCE	MLK	CW	MRB	BF	REA	API	TI
11.4	2.3	79.9	112.7	4.4	16.4	28.9	0.18	-0.06	0.56	134.1	78.9

- This solid-colored sister among the trio is a standout among the population within the offering. One can appreciate the productive genetic blend and respect that kind that lot 22 demonstrates.
- A March born donor/show prospect that is wide and true at the surface, square from her hock to ground with the ideal set to her knee and shoulder. We appreciate how she transitions from shoulder to center body and love her strength of spine and pin set. She is wider backed, bigger pinned, and square in her total hip design.
- Here's one to not miss, and make sure the investment is made in one that offers so many upside advantages.

## CCS/JS DQ 57G 63N

EGL FIRESTEEL 103F  
WHF/JS/CCS WOODFORD J001  
WHF SUMMER 365C  
MR HOC BROKER  
JS DAIRY QUEEN 57G  
CLRS DAIRY QUEEN 606D

## LOT 23

PB SM

REG: 4572824

BD: 4/4/25 TATTOO: 63N

CE	BW	WW	YW	MCE	MLK	CW	MRB	BF	REA	API	TI
11.4	2.3	79.9	112.7	4.4	16.4	28.9	0.18	-0.06	0.56	134.1	78.9

- The third of the ET flushmate sisters sired by WHF/JS/CCS Woodford J001 that is supported by the influence of 57G. The cow power that lines the pedigree of this trio is simply an immeasurable product of the program.
- We admire many things one finds in this intricate piece of the puzzle. She is soft in her rib design, big ended, and very flexible in her build as she maintains the look of a true brood cow in the making.
- A pair of full sisters averaged \$9,000 in the 2024 edition of the Midwest Made as the selections of the Hotz and Hellweg families



## CCS/JS DQ 57G 56N

HPF/HILL UPRISING C104

**SO REMEDY 7F**

B&K CREAM SODA 8D

MR HOC BROKER

**JS DAIRY QUEEN 57G**

CLRS DAIRY QUEEN 606D

**LOT 24**

**PB SM**

REG: 4572821

BD: 4/1/25 TATTOO: 56N

CE	BW	WW	YW	MCE	MLK	CW	MRB	BF	REA	API	TI
11.6	2.4	78	117.1	4.6	20.3	39.8	-0.1	-0.09	0.73	108.9	72

- SO Remedy 7F is a sire that has been heavily utilized across the nation within the Simmental breed. He has also been used on some of the most dominant Angus donors in the country as well with much success. The cattle he sires are consistent for rib, balance, eye appeal, and skeletal integrity. If you haven't tried him yet, we urge you to do so.
- SO Remedy 7F complements the daughters of MR HOC Broker with the highest of expectations delivered just as in this genetic blend.
- 56N is certainly maternal and functional in her look with extra presence and poise. In motion, she sets to the surface with a very good foot, plenty of bone, the trademark volume and shape the sire group is associated with, and as much generating potential as any from the youthful 57G donor.



**LOT 24 CCS/JS DQ 57G 56N**

## CCS/JS DQ 57G 32N

SO REMEDY 7F

**HARKERS MEDICINE MAN**

CELL TRIXIE 0105H

MR HOC BROKER

**JS DAIRY QUEEN 57G**

CLRS DAIRY QUEEN 606D

**LOT 25**

**PB SM**

REG: 4572826

BD: 2/27/25 TATTOO: 32N

CE	BW	WW	YW	MCE	MLK	CW	MRB	BF	REA	API	TI
8	4.2	78.3	115.4	2.9	18.9	45.1	0.11	-0.09	0.79	107.7	74.5

- This is one of the biggest groups of 57G progeny ever offered at public auction. The quality from one sire group to the next will not disappoint, and the consistency headlined by the donor is extremely obvious.
- A maternal sister by RP-BCR Insight G302 was selected by the Harker family in 2024 at a final gavel price of \$15,500. When progressive breeders with a household name make the investment in a cow family, others should take notice.
- We like the cattle by the new JS herd sire, Harkers Medicine Man, as he blends two of the most winning sires with a very exquisite, high profile show dam and maternal foundation.
- 32N is the loose built, stouter featured, bigger outlined individual of the sister tandem.



**LOT 25 CCS/JS DQ 57G 32N**

## CCS/JS DQ 57G 29N

SO REMEDY 7F

**HARKERS MEDICINE MAN**

CELL TRIXIE 0105H

MR HOC BROKER

**JS DAIRY QUEEN 57G**

CLRS DAIRY QUEEN 606D

**LOT 26**

**PB SM**

REG: 4572827

BD: 3/3/25 TATTOO: 29N

CE	BW	WW	YW	MCE	MLK	CW	MRB	BF	REA	API	TI
8	4.2	78.3	115.4	2.9	18.9	45.1	0.11	-0.09	0.79	107.7	74.5

- The influence of SO Remedy 7F is very evident when one studies the complete balance and symmetry 29N owns.
- We think many will find this one prior to or on sale day. She is exceptional in her center body with plenty of genuine base width, true shape, and balance from all angles.
- Please highlight the strength of the cow family as we mention that a maternal sister was featured in the bred heifer division at the 2024 Midwest Made and was chosen by Roger Healy. CCS/JS DQ 57G 55L sold for a \$15,000 hammer price as one of the top red-hided bred females offered a year ago.



**LOT 26 CCS/JS DQ 57G 29N**



LOT 27 JS FLIRT AWAY 54N



LOT 28 JS FLIRT AWAY 38N

- JS Flirt Away 54N is a striking, solid black daughter of the renowned JS Flirt Away 59Y donor, one of the most important females in the JS Simmental donor lineup.
- 54N is sired by the 2023 NAILE Grand Champion Percentage Simmental Bull, WHF/JS/CCS Woodford J001.
- This pair of ET flushmate sisters aligns two of the most important females in the Simmental breed within the first two generations of their pedigree.
- An intriguing, late February born prospect, that is high tying, elevated in her chest, robust in her center body, wide and true from the surface up, and incredible on the move.



JS BLACK SATIN 9B "BOOTS"

2015-2016 Triple Crown Winning Purebred Simmental Heifer  
Maternal Sister to Lots 27 & 28

- Donor quality, elite pedigree, and an incredible future is in store for this huge centered, stout ended, heavy boned, durably constructed prospect.
- In terms of structural integrity, foot shape, and overall soundness, it is challenging to create a Purebred female that offers so much skeletal quality. She's one that handles her extra mass and dimension with ease.
- JS Flirt Away 38N is a direct daughter of WHF/JS/CCS Woodford J001 that is supported by the iconic 59Y donor, therefore making her a maternal sister to the 2015-2016 PTP Ring of Champions Triple Crown winning JS Black Satin 9B, affectionately known as "Boots".
- A special pair of ET flushmate sisters that have the extras needed to stay ahead of the fast-paced seedstock game.

JS FLIRT A-WAY 59Y  
Legendary Dam of Lots 27 & 28

## JS FLIRT AWAY 54N

## JS FLIRT AWAY 38N

EGL FIRESTEEL 103F  
WHF/JS/CCS WOODFORD J001  
WHF SUMMER 365C  
HARKERS/JS DOMINATION  
JS FLIRT A-WAY 59Y  
JS FLATOUT FLIRTY 46T

## LOT 27

## PB SM

REG: 4572828  
BD: 2/21/25 TATT00: 54N

CE	BW	WW	YW	MCE	MLK	CW	MRB	BF	REA	API	TI
9.4	4.2	79	116.5	4	23.4	28.6	0.1	-0.07	0.75	118.7	75.2

EGL FIRESTEEL 103F  
WHF/JS/CCS WOODFORD J001  
WHF SUMMER 365C  
HARKERS/JS DOMINATION  
JS FLIRT A-WAY 59Y  
JS FLATOUT FLIRTY 46T

## LOT 28

## PB SM

REG: 4572829  
BD: 3/13/25 TATT00: 38N

CE	BW	WW	YW	MCE	MLK	CW	MRB	BF	REA	API	TI
9.4	4.2	79	116.5	4	23.4	28.6	0.1	-0.07	0.75	118.7	75.2





LOT 29 CCS/JS ECHO 39N



LOT 30 CCS/JS ECHO 47N

- 39N initiates a pair of SimAngus rockstars from a full sister to the legendary JS Black Satin 9B!
- The direct daughter of Silveiras Style 9303 from JS Flirt Away 59Y influence is everything as expected. Her awesome neck ties high from her shoulder, her transitions are as smooth as glass, she too is big ribbed, square pinned, and sets down with a killer hind leg. In motion, she is fault free and collected in her skeletal design.
- We expect this female's future on the bark to be very competitive and successful as she has the necessary equipment to get the job done.



JS ECHO 32D  
Dam of Lots 29 & 30

- This pair of full sisters would also be full sibs in blood to the 2023 Nebraska State Fair Supreme Champion 4-H Breeding Heifer! The lineage boasts multiple champions and breed influencers that are hard at work for multiple progressive firms across the land.
- We appreciate the cow features that 47N owns. She is so deep and practical in her kind with utmost skeletal integrity and sheer balance from end to end.
- The descendants of the proven legend, 59Y, have proved to be competitive and valuable at all stages of maturity. They represent a family of generators that rise to the challenge with each and every mating.



PEARL 52K  
2023 NE State Fair Supreme Champion 4-H Breeding Heifer  
Full Sister in Blood to Lots 29 & 30

### CCS/JS ECHO 39N

GAMBLES HOT ROD  
SILVEIRAS STYLE 9303  
SILVEIRAS ELBA 2520  
MR HOC BROKER  
JS ECHO 32D  
JS FLIRT A-WAY 59Y

### LOT 29

1/2 SM 1/2 AN

REG: 4572830  
BD: 3/16/25 TATTOO: 39N

CE	BW	WW	YW	MCE	MLK	CW	MRB	BF	REA	API	TI
9.2	2.4	64.8	101.5	4.5	18.8	34.7	0.23	-0.01	0.42	104.8	65.9

### CCS/JS ECHO 47N

GAMBLES HOT ROD  
SILVEIRAS STYLE 9303  
SILVEIRAS ELBA 2520  
MR HOC BROKER  
JS ECHO 32D  
JS FLIRT A-WAY 59Y

### LOT 30

1/2 SM 1/2 AN

REG: 4572831  
BD: 4/5/25 TATTOO: 47N

CE	BW	WW	YW	MCE	MLK	CW	MRB	BF	REA	API	TI
9.2	2.4	64.8	101.5	4.5	18.8	34.7	0.23	-0.01	0.42	104.8	65.9

DECEMBER 12, 2025 IN PRAIRIE CITY, IOWA





LOT 31 CCS MISSIE 211N

## CCS MISSIE 211N

KR CASINO 6243

ROSEWOOD BELLAGIO 090

ROSEWOOD GEORGINA 290Z

COLBURN PRIMO 5153

PVF MISSIE 8089

PVF MISSIE 0084

## LOT 31

## ANGUS

REG: 21359434

BD: 4/3/25 TATTOO: 211N

CE	BW	WW	YW	CEM	MLK	CW	MRB	BF	REA	\$B	\$C
4	3.7	54	97	4	24	28	0.32	0.02	0.32	112	178

- We initiate the Angus offering with an elite trio of sisters sired by the \$320,000 valued son of KR Casino 6243, Rosewood Bellagio 090 from the PVF Missie 8089 donor dam.
- 211N offers a discerning presence with an elevated neck attachment from the top side of her blade while being neatly tucked about her lower chest as she transitions to an unwavering underline with more than enough center body.
- A February born prospect that plants her rear leg with confidence and authority that's square and true from her hock to the surface.
- If you can't get the context, we like this one as much as any Angus we have ever offered!



PVF MISSIE 8089

Dam of Lots 31-35



ROSEWOOD BELLAGIO 090

\$320,000 Valued Sire of Lots 31-33





LOT 32 CCS MISSIE 208N

- PVF Missie 0084 would be the legendary maternal granddam for lots 31-33, as told by the photos of the three brilliant looking young ladies.
- We enjoy watching this March female change and mature from week to week. Her length, her size, and her capacity get greater with each day.
- This sister has the advantages in terms of substance of bone and foot with extra width to her pin set while offering an exotic and chiseled look up front.
- The future is no doubt bright for Lot 32.



PVF MISSIE 0084

Legendary Maternal Granddam of Lots 31-33



LOT 33 CCS MISSIE 204N

- We firmly believe the cattle by Rosewood Bellagio 090 will be comparable to those sired by his proven sire, KR Casino 6243, in terms of substance, body shape, and quality.
- 204N is long sided, deep ribbed, taller fronted, and offers skeletal quality on another level.
- We believe the durability and genetics of this young female will only help her achieve greatness, particularly in production.



PVF MISSIE 4149

2015 NJAS Grand Champion Owned Heifer  
3/4 Sister in Blood to Dam of Lots 31-35

### CCS MISSIE 208N

KR CASINO 6243

ROSEWOOD BELLAGIO 090

ROSEWOOD GEORGINA 290Z

COLBURN PRIMO 5153

PVF MISSIE 8089

PVF MISSIE 0084

**LOT 32**  
**ANGUS**

REG: 21359436

BD: 3/13/25 TATTOO: 208N

CE	BW	WW	YW	CEM	MLK	CW	MRB	BF	REA	\$B	\$C
4	3.7	54	97	4	24	28	0.32	0.02	0.32	112	178

### CCS MISSIE 204N

KR CASINO 6243

ROSEWOOD BELLAGIO 090

ROSEWOOD GEORGINA 290Z

COLBURN PRIMO 5153

PVF MISSIE 8089

PVF MISSIE 0084

**LOT 33**  
**ANGUS**

REG: 21359435

BD: 2/25/25 TATTOO: 204N

CE	BW	WW	YW	CEM	MLK	CW	MRB	BF	REA	\$B	\$C
4	3.7	54	97	4	24	28	0.32	0.02	0.32	112	178



LOT 34 CCS MISSIE 207N

- An elegant silhouette is sketched by this direct daughter of the 2021 Cattlemen's Congress ROV Reserve Grand Champion Angus Bull, BNZW Dignity 8017.
- The quality from the PVF Missie 8089 donor cow never lets up!
- She sets right from the very top side of her shoulder, where her slender, ultra-refined neck attaches. Her blade to fore rib transition is unnoticeable, her center rib is deep and abundant, with a killer hip and hind leg to her claim as well.
- A female that transcends the normal and pushes the needle forward. This is a very unique female that we believe will create her own legacy!



BNZW DIGNITY 8017

2021 Cattlemen's Congress ROV Reserve  
Grand Champion Angus Bull  
Sire of Lot 34



LOT 35 CCS MISSIE 217N

- Here's the one that closes the gate on the daughters of the powerful PVF Missie 8089, and is sired by the \$100,000 Conley A 1, one of the hottest go-to sires in the country for calving ease, build, and body type improvement.
- Her look and presence is indicative of the influence of her sire, with the added advantages contributed by her dam in terms of sharpness of feature and elegance in transitions.
- We are sure that her fan base will grow substantially from the visitors and general sale crowd as her standalone presence is noticed.



CONLEY A 1

\$100,000 Sire of Lot 35

## CCS MISSIE 207N

PVF INSIGHT 0129  
BNWZ DIGNITY 8017  
CCC SARA'S DREAM 5116  
COLBURN PRIMO 5153  
PVF MISSIE 8089  
PVF MISSIE 0084

LOT 34  
ANGUS

REG: 21352153  
BD: 3/20/25 TATTOO: 207N

CE	BW	WW	YW	CEM	MLK	CW	MRB	BF	REA	\$B	\$C
3	3.6	61	106	3	20	41	0.11	0.014	0.57	124	181

## CCS MISSIE 217N

GATEWAY FOLLOW ME F163  
CONLEY A 1  
EXAR PRINCESS 6741  
COLBURN PRIMO 5153  
PVF MISSIE 8089  
PVF MISSIE 0084

LOT 35  
ANGUS

REG: 21352154  
BD: 4/11/25 TATTOO: 217N

CE	BW	WW	YW	CEM	MLK	CW	MRB	BF	REA	\$B	\$C
4	3.9	57	93	3	18	34	0.13	0.035	0.56	109	175





**LOT 36 CCS MAXINE 205N**



**LOT 37 CCS MAXINE 214N**



**DUNK-W MAXINE HR 505C**  
\$72,000 Dam of Lots 36 & 37



**CCS MAXINE 209M**  
\$20,000 Full Sister to Lot 36



**GATEWAY FOLLOW ME F163**  
Iconic Angus AI Sire  
Maternal Brother to Lots 36 & 37



**CCS MAXINE 207M**  
\$21,000 Full Sister to Lot 37

### CCS MAXINE 205N

### CCS MAXINE 214N

PVF BLACKLIST 7077  
**PVF DLX KING PIN 0058**  
PVF LUCY 4189  
GAMBLES HOT ROD  
**DUNK-W MAXINE HR 505C**  
K B LADY MAXINE LUT 857

### LOT 36 ANGUS

REG: 21353529  
BD: 3/10/25 TATTOO: 205N

CE	BW	WW	YW	CEM	MLK	CW	MRB	BF	REA	\$B	\$C
5	2.7	54	90	3	18	31	0.38	-0.024	0.79	127	202

- JS Simmentals selected the proven donor dam from the 17th Annual Embryos on Snow. There is little to doubt that Dunk-W Maxine 505C has secured her place in the history books of the progressive outfit.
- This direct daughter of PVF DLX King Pin 0058 comes with the high-end features of the consistent sire group. She is refined and sculpted about her front third with a trademark rear leg and hock design. However, it's the added length and extension from her shoulders back that is consistently true to her donor dam's legacy.
- 205N is very well built, smooth, and balanced with tons of potential for the future.

CFCC BLACK JACK 001  
**KR CASINO 6243**  
MALSONS SAVANNAH 27Y  
GAMBLES HOT ROD  
**DUNK-W MAXINE HR 505C**  
K B LADY MAXINE LUT 857

### LOT 37 ANGUS

REG: 21356618  
BD: 4/14/25 TATTOO: 214N

CE	BW	WW	YW	CEM	MLK	CW	MRB	BF	REA	\$B	\$C
0	4.4	57	98	2	24	30	0.31	0.006	0.5	116	183

- This direct daughter of KR Casino 6243 will always be a maternal sister to the iconic Gateway Follow Me F163!
- CCS Maxine 214N is so productive and maternal in her look and design. Her brood cow presence is enhanced through her center body shape and volume from end to end.
- Her skeletal quality is top notch as she hinges loosely and takes to the pen with ease.
- This mating has been proven successful year after year, with a full sister commanding a \$21,000 hammer price just a year ago. Invest with confidence.



LOT 38 CCS IMPRESSIVE 201N

TCF DPL GAMBINO 303  
Sire of Lot 38KRUSE MISSIE PRIMO 147  
2018 NAILE Reserve Grand Champion Junior Angus Heifer  
Maternal Sister to Maternal Granddam of Lot 38

## CCS IMPRESSIVE 201N

PVF DLX KING PIN 0058

TCF DPL GAMBINO 303

DPL SANDY 7422

GATEWAY FOLLOW ME F163

UDE IMPRESSIVE 1167

UDE IMPRESSIVE 138E

LOT 38  
ANGUS

REG: 21352152

BD: 1/21/25 TATTOO: 201N

CE	BW	WW	YW	CEM	MLK	CW	MRB	BF	REA	\$B	\$C
-1	4.9	60	98	6	17	26	0.47	-0.024	0.63	114	178

- True to her namesake, CCS Impressive 201N, should gather the masses for her appraisal on December 12!
- A direct daughter of the rising star, TCF DPL Gambino 303, that offers the big pieces in a very complete package.
- This one is huge footed, stout boned, and one of the bigger, more legit bodied ones of the offering. She, too, has the added punch and sheer shape to her smooth muscle pattern that lends to her investment advantages. She is one of the very good females in the offering without question!





LOT 39 BOE MISS SOPHIA

## BOE MISS SOPHIA

WEIS ALL ME 10F

JBOY ONE FOR ALL 001J ET

MISS HIDDEN GEM 899F ET

BSC FREEDOM 147 F ET

BOE 145J

BOE 545C

LOT 39

MAINE-ANJOU

REG: 565917

BD: 5/10/25 TATTOO: BOE500N



MISS HIDDEN GEM 899F ET

2020 NWSS Grand Champion Maine-Anjou Heifer  
Paternal Granddam of Lot 39

JBOY ONE FOR ALL 001J ET

Sire of Lot 39

CE	BW	WW	YW	MCE	MLK	CW	MRB	BF	REA
4	1.6	44	60	2	11	2	0.09	-0.02	0.15

- We introduce the lone high Maine-Anjou heifer of this elite offering of females, BOE Miss Sophia!
- The direct daughter of JBOY One For All 001J offers exhibition values for traits that are challenging to mimic! She is so well built and offers the right proportions that lends to her potential appraisal value.
- She defines the correct frontal presence for any discerning show female as she is smoothly laid in at her blade, which allows for a seamless transition to her center body. Her upper rib is bold, with a desirable set to her pins, and plenty of genuine shape from behind.
- Her video will represent her structure and build as she offers as much flexibility as anything in the entire set.
- BOE Miss Sophia is worthy of serious consideration for those looking for a heifer that can raise the bar with supreme honor potential.





*Bred*

FEMALES





### LOT 40 CCS/JS AUTUMN 6M

- What a way to initiate high quality bred offering with one that has the look and build of a working girl!
- 6M is constructed wide and true from the ground up. Her center body design and muscle shape suggest that she is serious about the BEEF business and eager for her productive years.
- Very maternal, yet feminine in her front third, with impeccable skeletal quality and tremendous foot size.
- She's marked for success, built to withstand environmental challenges, and poised to make a positive impact on the industry.

### CCS/JS AUTUMN 6M

W/C DOUBLE DOWN 5014E

WHF/JS/CCS DOUBLE UP G365

WHF SUMMER 365C

W/C EXECUTIVE ORDER 8543B

WHF AUTUMN 365E

WHF ANDIE 365A

### LOT 40

### PB SM

REG: 4439344

BD: 2/22/24 TATTOO: 6M

CE	BW	WW	YW	MCE	MLK	CW	MRB	BF	REA	API	TI
12.3	0	79.6	111.2	6.6	21	20.6	-0.16	-0.07	0.88	111.7	74.3

AI BRED 4/18/25 TO W/C EXECUTIVE ORDER 8543B (ASA: 2900283)

PE 5/4/25-8/29/25 TO WHF/JS THE DEUCE K45 (ASA: 4144750)

LIKELY SAFE AI - EST. DUE 1/25/26



WHF AUTUMN 365E

2018 NAILE Division Champion Purebred Simmental Heifer  
Dam of Lot 40



WHF/JS/CCS DOUBLE UP G365

2021 Cattleman's Congress Reserve Grand Champion Purebred Simmental Bull  
Sire of Lot 40

MIDWEST MADE ELITE FEMALE SALE





**LOT 41 CCS/JS SUMMER 5M**



**LOT 42 CCS/JS SUMMER 37M**

- This elite bred female of the 2025 Midwest Made is a full sister to Brody Wenell's 3rd Overall Purebred Female of the 2024 AJSA National Classic in Tulsa, Oklahoma. The Wenell owned female made quite the run a year ago as one of the many great females that bear this exact mating strategy.
- The genetic blend has been tried, true, and successful on more than one occasion and is laced with substantial cow power on both sides of the family tree.
- We appreciate the elegance of her front-end design, love her skeletal quality, and admire her overall build and presence.
- All the guesswork is removed here, and excellence is the only expectation.



**CCS/JS/LFTZ SUMMER L378**  
2024 AJSA National Classic 3rd Overall  
Purebred Simmental Heifer  
Full Sister to Lot 41

- A three-quarter sister to the Lot 41 female carrying the sire influence of the many times National Champion sire, Reckoning 711F. We expect this sire group to be of extended use and popularity over his contemporaries as quality oozes from every hoof of his influence.
- This sultry, sappy brood cow prospect is certainly built for the approval of any good cattleman or woman. She has the running gear necessary to remain in the program or donor pen for the years ahead, along with the look of function and profit potential.
- Another excellent investment prospect saturated with generations of proven dams that have impacted the business for decades.



**WHF SUMMER 365C**  
2017 NAILE Grand Champion Purebred Simmental Heifer  
Dam of Lots 41-46

### CCS/JS SUMMER 5M

YARDLEY UTAH Y361												LOT 41	
W/C RELENTLESS 32C												PB SM	
MISS WERNING KP 8543U												REG: 4439335	
CCR WIDE RANGE 9005A												BD: 1/21/24 TATT00: 5M	
WHF SUMMER 365C													
WHF ANDIE 365A													
CE	BW	WW	YW	MCE	MLK	CW	MRB	BF	REA	API	TI		
9.2	3	77.8	104	4.7	15	18.3	-0.06	-0.07	0.91	103.4	71		

AI BRED 4/17/25 TO WLSF FIREHOUSE 911K (ASA: 4178795)  
PE 5/4/25-8/29/25 TO WLSF FIREHOUSE 911K (ASA: 4178795)  
TOO CLOSE TO CALL - EST. DUE 2/14/26

### CCS/JS SUMMER 37M

W/C RELENTLESS 32C

RECKONING 711F

RWA KRISHA-ET

CCR WIDE RANGE 9005A

WHF SUMMER 365C

WHF ANDIE 365A

LOT 42

PB SM

REG: 4422172

BD: 3/4/24

TATTOO: 37M

CE	BW	WW	YW	MCE	MLK	CW	MRB	BF	REA	API	TI
7.5	2.8	77.3	102.9	4.7	15.3	16	-0.06	-0.05	0.78	106.3	70.1

AI BRED 4/23/25 TO WHF/JS THE DEUCE K45 (ASA: 4144750)  
SAFE AI WITH NO EXPOSURE - EST. DUE 1/30/26



LOT 43 CCS/JS SUMMER 9M



LOT 44 CCS/JS SUMMER 58M

- A very eye catching and discerning female sired by the young son of JSUL Something About Mary 8421, R/C SFI Creedence 417J.
- 417J is rising in popularity due to his ability to enhance any silhouette.
- This female represents the most dominant cow family in the JS Program. Expect nothing but profitability and longevity from the direct daughter of the past National Champion, WHF Summer 365C.



CCS/JS SUMMER 8M

2024 IA State Fair Spring Heifer Calf Division Champion  
\$24,500 Full Sister to Lot 43

- The hits keep coming in this bred female lineup! RP-BCR Insight G302 is the stoutest featured, widest based, biggest centered son of the great RP/MP Built To Love A021 without question! He offers the same profit flexibility to both sexes, with demand coming from all corners of the industry, just like his sire, PVF Insight 0129.
- 58M may be the most intriguing breeding piece of the WHF Summer 365C lineup of bred cattle. She has the advantage of hoof size and substance of bone while daylighting the pen for genuine skeletal width and rib design. Sure, as a sire group, she may have a bit more throat than her maternal sisters, but that also means she may have the highest probability of generating more dollars, especially for herd sire production.
- One of the elite bred females to watch in the 2025 maternal sale run!



CCS/JS SUMMER 63M

Full Sister to Lot 44

## CCS/JS SUMMER 9M

JSUL SOMETHING ABOUT MARY 8421  
R/C SFI CREEDENCE 417J  
SFI LOVE ME LATER A9X  
CCR WIDE RANGE 9005A  
WHF SUMMER 365C  
WHF ANDIE 365A

LOT 43  
PB SM

REG: 4422175  
BD: 2/20/24 TATTOO: 9M

CE	BW	WW	YW	MCE	MLK	CW	MRB	BF	REA	API	TI
9.5	3.2	82.3	121.8	4.3	14.6	28.4	-0.21	-0.09	0.84	100.4	70.3

AI BRED 4/18/25 TO WLSF FIREHOUSE 911K (ASA: 4178795)  
PE 5/4/25-8/29/25 TO WLSF FIREHOUSE 911K (ASA: 4178795)  
LIKELY SAFE AI - EST. DUE 1/25/26

## CCS/JS SUMMER 58M

PVF INSIGHT 0129  
RP-BCR INSIGHT G302  
RP/MP BUILT TO LOVE A021  
CCR WIDE RANGE 9005A  
WHF SUMMER 365C  
WHF ANDIE 365A

## LOT 44

3/4 SM 1/4 AN

REG: 4422183  
BD: 4/10/24 TATTOO: 58M

CE	BW	WW	YW	MCE	MLK	CW	MRB	BF	REA	API	TI
9.7	2.4	83.1	122.1	5.8	18	39.5	-0.01	-0.04	0.84	105.7	71.3

AI BRED 4/26/25 TO WHF/JS THE DEUCE K45 (ASA: 4144750)  
SAFE AI WITH NO EXPOSURE - EST. DUE 2/2/26





**LOT 45** CCS/JS SUMMER 72M

- This mating has been popular among those seeking the percentage show heifer of their choice. Megan Brown purchased a full sister that went on to win the percentage show of the 2024 Iowa State Fair.
- Lot 45 is a striking baldy that is set high from her blade and very chiseled about her skull. She is deep sided, loose hinged, and maintains ultimate maternal presence.



**CCS/JS SUMMER 50L**  
2024 IA State Fair Grand Champion  
Percentage Simmental Heifer  
\$40,000 Full Sister to Lots 45 & 46



**LOT 46** CCS/JS SUMMER 77M

- Here is the solid black full sister to CCS/JS Summer 72M, which is also a full sister to the 2024 Ohio State Fair Reserve Champion Percentage Simmental Heifer.
- We admire the build and presence of this version of the mating as she not only ties high in her neck shoulder junction but also offers strength in her spine, levelness of her pin set, and a near perfect set to her hock and pastern.



**CCS/JS SUMMER 47L**  
2024 OH State Fair Reserve Grand Champion  
Percentage Simmental Heifer  
\$70,000 Full Sister to Lots 45 & 46

### CCS/JS SUMMER 72M

SILVEIRAS STYLE 9303

HARKERS UNLEASHED

HILB MISS OO LA LA B412

CCR WIDE RANGE 9005A

WHF SUMMER 365C

WHF ANDIE 365A

LOT 45

3/4 SM 1/4 AN

REG: 4439333

BD: 3/19/24

TATTOO: 72M

CE	BW	WW	YW	MCE	MLK	CW	MRB	BF	REA	API	TI
7.7	3.7	82.1	123.6	4.8	16.4	35.8	0.15	-0.06	0.63	102.5	73

AI BRED 4/18/25 TO WLSF FIREHOUSE 911K (ASA: 4178795)

PE 5/4/25-8/29/25 TO WLSF FIREHOUSE 911K (ASA: 4178795)

LIKELY SAFE AI - EST. DUE 1/25/26

### CCS/JS SUMMER 77M

SILVEIRAS STYLE 9303

HARKERS UNLEASHED

HILB MISS OO LA LA B412

CCR WIDE RANGE 9005A

WHF SUMMER 365C

WHF ANDIE 365A

LOT 46

3/4 SM 1/4 AN

REG: 4573587

BD: 3/7/24

TATTOO: 77M

CE	BW	WW	YW	MCE	MLK	CW	MRB	BF	REA	API	TI
7.7	3.7	82.1	123.6	4.8	16.4	35.8	0.15	-0.06	0.63	102.5	73

AI BRED 4/17/25 TO WLSF FIREHOUSE 911K (ASA: 4178795)

PE 5/4/25-8/29/25 TO WLSF FIREHOUSE 911K (ASA: 4178795)

LIKELY SAFE AI - EST. DUE 1/24/26



LOT 47 CCS/JS GUCCI 99L



LOT 48 CCS/JS GUCCI 62M

- The legacy of WHF Andie 365A continues through the little sister of the maternal legends WHF Summer 365C and WHF Gucci 366F.
- WHF Gucci 366F has established a notable track record to make its own claim when sheer power and presence are discussed. Her sons have proven to be very marketable as well over the years, and we anticipate much more to come from this more youthful donor from the 365A influence. 99L is a maternal sister to the \$165,000 JS Double Or Nothing 4K stud that was selected by Hilltop Simmentals.
- WLE Copacetic E02 has been utilized as a suitable replacement for his sire, with the advantage of smoothness and a bit more center rib. This WLE Copacetic E02 daughter from 366F is bold in her build, stout in her bone work, with the look of production from end to end.



JS DOUBLE OR NOTHING 4K

\$165,000 Maternal Brother to Lots 47 &amp; 48

- WHF Gucci 366F offers unrivaled power and substance, and it's easy to see in this daughter of R/C SFI Credence 417J!
- Big pinned, stout ended, rugged boned, huge pawed, big centered, and very broody designed is how we see CCS/JS Gucci 62M.
- Power and substance to produce those highly demanded herd sires.



WHF GUCCI 366F

Dam of Lots 47 &amp; 48

## CCS/JS GUCCI 99L

HPF QUANTUM LEAP Z952

WLE COPACETIC E02

CMFM JOY 02ZB

CCR WIDE RANGE 9005A

WHF GUCCI 366F

WHF ANDIE 365A

## LOT 47

PB SM

REG: 4337381

BD: 11/10/23 TATTOO: 99L

CE	BW	WW	YW	MCE	MLK	CW	MRB	BF	REA	API	TI
11.8	2.4	83.9	127.5	5.9	11	26.2	0.04	-0.08	0.96	116.5	78.9

AI BRED 4/18/25 TO WHF/JS/CCS DOUBLE UP G365 (ASA: 3658592)

PE 5/4/25-8/29/25 TO WHF/JS THE DEUCE K45 (ASA: 4144750)

LIKELY SAFE AI - EST. DUE 1/25/26

## CCS/JS GUCCI 62M

JSUL SOMETHING ABOUT MARY 8421

R/C SFI CREEDENCE 417J

SFI LOVE ME LATER A9X

CCR WIDE RANGE 9005A

WHF GUCCI 366F

WHF ANDIE 365A

## LOT 48

PB SM

REG: 4439341

BD: 4/3/24 TATTOO: 62M

CE	BW	WW	YW	MCE	MLK	CW	MRB	BF	REA	API	TI
10.3	3.4	82.5	127.9	4.1	16.4	30.8	-0.1	-0.07	0.94	109.2	73.5

AI BRED 4/18/25 TO WLSF FIREHOUSE 911K (ASA: 4178795)

PE 5/4/25-8/29/25 TO WLSF FIREHOUSE 911K (ASA: 4178795)

TOO CLOSE TO CALL - EST. DUE 2/15/26





LOT 49 JS FLIRT AWAY 81M



LOT 50 SWC LETTIN HER FLIRT 876L

- WHF/JS/CCS Woodford J001 is proving to be one of the better sons of the productive WHF Summer 365C. The sire group's consistency and calving ease reliability are unmatched, as he continues to sire cattle in demand across the industry.
- This genetic combination showcases the strength of the JS Simmentals donor lineup by combining the two leading matriarchs of the program. JS Flirt A-Way 59Y and WHF Summer 365C exemplify this strength clearly through this genetic masterpiece. 81M stands out as a key highlight in this offering.
- Her design reflects maternal strength and industry recognition, and she will always be a maternal sister to the dominant and now deceased donor, JS Black Satin 9B "Boots".

JS FLIRT A-WAY 59Y  
Prolific Dam of Lot 49

- This daughter of Next Level is from a W/C Relentless 32C sired maternal sister to the Triple Crown winning JS Black Satin 9B "Boots". JS Flirt A Way 76H was the \$20,000 selection of the Shipman and Sheffield Families and was campaigned by Bodie Shipman.
- A productive designed, stout featured beef machine that plants on a big set of feet and legs. She is wide and genuine from the surface up, bold in center rib design, big backed, and big pinned.
- Genetically laced with power from end to end, invest with utmost confidence in the "Flirty" legacy!

JS FLIRT A WAY 76H  
Dam of Lot 50

## JS FLIRT AWAY 81M

## SWC LETTIN HER FLIRT 876L

JS FLIRT AWAY 81M												
EGL FIRESTEEL 103F												
WHF/JS/CCS WOODFORD J001												
WHF SUMMER 365C												
HARKERS/JS DOMINATION												
JS FLIRT A-WAY 59Y												
JS FLATOUT FLIRTY 46T												
CE	BW	WW	YW	MCE	MLK	CW	MRB	BF	REA	API	TI	
9.4	4.2	79	116.5	4	23.4	28.6	0.1	-0.07	0.75	118.7	75.2	

AI BRED 4/17/25 TO WLSF FIREHOUSE 911K (ASA: 4178795)  
 PE 5/4/25-8/29/25 TO WLSF FIREHOUSE 911K (ASA: 4178795)  
 LIKELY SAFE AI - EST. DUE 1/24/26

SWC LETTIN HER FLIRT 876L												
KRJ DAKOTA OUTLAW G974												
NEXT LEVEL												
KRD CAEDENCE C37												
W/C RELENTLESS 32C												
JS FLIRT A WAY 76H												
JS FLIRT A-WAY 59Y												
CE	BW	WW	YW	MCE	MLK	CW	MRB	BF	REA	API	TI	
7.1	4.7	81.5	118.5	2.9	21.9	26.5	-0.03	-0.07	1.06	104.6	72.8	

AI BRED 5/8/25 TO WLSF FIREHOUSE 911K (ASA: 4178795)  
 PE 5/4/25-8/29/25 TO WLSF FIREHOUSE 911K (ASA: 4178795)  
 LIKELY SAFE AI - EST. DUE 2/14/26



LOT 51 JS DAIRY QUEEN 28M



LOT 52 JS DAIRY QUEEN 89L

- A female mated for industry success with emphasis on calving ease, birth weight, and marbling.
- EGL Firesteel 103F, through WHF/JS/CCS Woodford J001, and CLRS Dairy Queen 606D impact the lineage of this elite breeding piece that offers utmost breeding flexibility regardless of your program's discipline.
- 28M is loaded with substance of hoof and bone with a surplus of rib and beef animal shape. She is one that encompasses more positive investment measures from multiple angles!

CLRS DAIRY QUEEN 606D  
\$74,000 Dam of Lots 51-54

- The mating to the first notable son of WHF Summer 365C, WHF/JS/CCS Double Up G365, proves to be consistent for quality and kind from one sister to the next.
- Lots 52 and 53 are very similar in their build and shape. Both are broody and attractive in their design. Clean and symmetrical in their lines, deep and bold in their body shape, stout in their muscle, and heavy in their bone.
- These are the kind that breeding programs are built with and around. They offer generations of proven, productive, and profitable cow families with industry and breed wide acceptance.

JS DAIRY QUEEN 56G  
2020 World Beef Expo Reserve Grand Champion  
Purebred Simmental Heifer  
Maternal Sister to Lots 51-54

## JS DAIRY QUEEN 28M

EGL FIRESTEEL 103F  
WHF/JS/CCS WOODFORD J001  
WHF SUMMER 365C  
CLRS AFTER SHOCK 604 A  
CLRS DAIRY QUEEN 606D  
CLRS BEAUTY QUEEN 420 B

LOT 51  
PB SM

REG: 4439323  
BD: 1/26/24 TATTOO: 28M

CE	BW	WW	YW	MCE	MLK	CW	MRB	BF	REA	API	TI
13.8	0.3	76.5	107.5	5.5	16.3	29.2	0.26	-0.05	0.51	146.4	81.3

AI BRED 4/17/25 TO WLSF FIREHOUSE 911K (ASA: 4178795)  
PE 5/4/25-8/29/25 TO WLSF FIREHOUSE 911K (ASA: 4178795)  
TOO CLOSE TO CALL - EST. DUE 2/15/26

## JS DAIRY QUEEN 89L

W/C DOUBLE DOWN 5014E  
WHF/JS/CCS DOUBLE UP G365  
WHF SUMMER 365C  
CLRS AFTER SHOCK 604 A  
CLRS DAIRY QUEEN 606D  
CLRS BEAUTY QUEEN 420 B

LOT 52  
PB SM

REG: 4337008  
BD: 11/15/23 TATTOO: 89L

CE	BW	WW	YW	MCE	MLK	CW	MRB	BF	REA	API	TI
12.2	0.4	76.3	104.2	6	15.5	29.1	-0.07	-0.06	0.73	117.9	72.8

AI BRED 5/22/25 TO WHF/JS THE DEUCE K45 (ASA: 4144750)  
PE 5/4/25-8/29/25 TO WHF/JS THE DEUCE K45 (ASA: 4144750)  
LIKELY SAFE AI - EST. DUE 2/28/26





**LOT 53 JS DAIRY QUEEN 101L**

- Another top-shelf daughter of WHF/JS/CCS Double Up G365 that is supported by the everlasting influence of the \$74,000 CLRS Dairy Queen 606D donor.
- This pair of females are supported by two of the most lucrative females to ever call home to JS Simmentals. We love the natural dimension, fleshing ease, and fertility that supports these ET flushmate sisters.
- She sells safe in calf to the very influential W/C Executive Order 8543B for a quick return on investment!



**WHF/JS/CCS DOUBLE UP G365**  
2021 Cattlemen's Congress Reserve Grand Champion  
Purebred Simmental Bull  
Sire of Lots 52 & 53



**LOT 54 JS DAIRY QUEEN 68M**

- Next Level offers many benefits to a genetic equation from a physical perspective. Those positive traits are exemplified through this cow prospect from the 606D donor dam.
- Longevity in build, bone circumference, foot size, and power are all enhanced by his influence within this genetic blend.
- 68M is a prime example of the maternal prowess that CLRS Dairy Queen 606D can contribute to any mating schematic. Invest in what's proven.



**JS DAIRY QUEEN 74L**  
Full Sister to Lot 54

### JS DAIRY QUEEN 101L

### JS DAIRY QUEEN 68M

<b>W/C DOUBLE DOWN 5014E</b> <b>WHF/JS/CCS DOUBLE UP G365</b> WHF SUMMER 365C CLRS AFTER SHOCK 604 A <b>CLRS DAIRY QUEEN 606D</b> CLRS BEAUTY QUEEN 420 B												
<b>LOT 53</b> <b>PB SM</b> REG: 4337012 BD: 10/20/23 TATTOO: 101L												
CE	BW	WW	YW	MCE	MLK	CW	MRB	BF	REA	API	TI	
12.2	0.4	76.3	104.2	6	15.5	29.1	-0.07	-0.06	0.73	117.9	72.8	

AI BRED 4/18/25 TO W/C EXECUTIVE ORDER 8543B (ASA: 2900283)  
 PE 5/4/25-8/29/25 TO WHF/JS THE DEUCE K45 (ASA: 4144750)  
 LIKELY SAFE AI - EST. DUE 1/25/26

<b>KRJ DAKOTA OUTLAW G974</b> <b>NEXT LEVEL</b> KRDL CAEDENCE C37 CLRS AFTER SHOCK 604 A <b>CLRS DAIRY QUEEN 606D</b> CLRS BEAUTY QUEEN 420 B												
<b>LOT 54</b> <b>PB SM</b> REG: 4422199 BD: 2/19/24 TATTOO: 68M												
CE	BW	WW	YW	MCE	MLK	CW	MRB	BF	REA	API	TI	
11.2	1.9	77.6	112.4	4.8	18.1	35.2	0.03	-0.08	0.85	124.7	75.2	

AI BRED 4/17/25 TO WHF/JS/CCS DOUBLE UP G365 (ASA: 3658592)  
 PE 5/4/25-8/29/25 TO WHF/JS THE DEUCE K45 (ASA: 4144750)  
 LIKELY SAFE AI - EST. DUE 1/24/26



LOT 55 CCS/JS DQ 57G 94L

## CCS/JS DQ 57G 94L

W/C DOUBLE DOWN 5014E  
**WHF/JS/CCS DOUBLE UP G365**  
 WHF SUMMER 365C  
 MR HOC BROKER  
**JS DAIRY QUEEN 57G**  
 CLRS DAIRY QUEEN 606D

## LOT 55

PB SM

REG: 4337013

BD: 11/14/23 TATTOO: 94L

CE	BW	WW	YW	MCE	MLK	CW	MRB	BF	REA	API	TI
9.9	2.5	79.7	109.4	4.9	15.6	28.7	-0.15	-0.07	0.79	105.6	70.3

- We get geared up for a set of sisters from the 2021 Iowa State Fair Grand Champion Purebred Female, JS Dairy Queen 57G.
- 94L is cowy, maternal, and functional from every angle.
- Her transitions are flawless, along with her skeletal integrity.
- She is very robust through her center body and leaves one wide and true from her hock to the ground.
- The only way to make money is to own the inventory, as genetics do not cost; they only pay, especially in times like we are experiencing!

AI BRED 4/18/25 TO WHF/JS/CCS WOODFORD J001 (ASA: 4068398)

PE 5/4/25-8/29/25 TO WHF/JS THE DEUCE K45 (ASA: 4144750)

LIKELY SAFE AI - EST. DUE 1/25/26



LOT 56 CCS/JS DQ 57G 96L

## CCS/JS DQ 57G 96L

EGL FIRESTEEL 103F  
**WHF/JS/CCS WOODFORD J001**  
 WHF SUMMER 365C  
 MR HOC BROKER  
**JS DAIRY QUEEN 57G**  
 CLRS DAIRY QUEEN 606D

## LOT 56

PB SM

REG: 4337023

BD: 11/6/23 TATTOO: 96L

CE	BW	WW	YW	MCE	MLK	CW	MRB	BF	REA	API	TI
11.4	2.3	79.9	112.7	4.4	16.4	28.9	0.18	-0.06	0.56	134.1	78.9

- One that replicates many of the same traits as her maternal second dam, which sparked Jay and Ken's enthusiasm for investing in the 606D donor.
- Huge centered, extra deep flanked, heavy boned, and low input in her overall kind.
- She will be a productive female that will meet the needs for efficiency and profitability for the times ahead in production agriculture.

AI BRED 4/17/25 TO WLSF FIREHOUSE 911K (ASA: 4178795)

PE 5/4/25-8/29/25 TO WHF/JS THE DEUCE K45 (ASA: 4144750)

LIKELY SAFE AI - EST. DUE 1/24/26



LOT 57 CCS/JS DQ 57G 55M

## CCS/JS DQ 57G 55M

EGL FIRESTEEL 103F  
**WHF/JS/CCS WOODFORD J001**  
 WHF SUMMER 365C  
 MR HOC BROKER  
**JS DAIRY QUEEN 57G**  
 CLRS DAIRY QUEEN 606D

## LOT 57

PB SM

REG: 4439332

BD: 3/30/24 TATTOO: 55M

CE	BW	WW	YW	MCE	MLK	CW	MRB	BF	REA	API	TI
11.4	2.3	79.9	112.7	4.4	16.4	28.9	0.18	-0.06	0.56	134.1	78.9

- The second daughter by WHF/JS/CCS Woodford J001 from the MR HOC Broker influenced 57G donor dam.
- This youthful version is ultra loose in her construction as she takes to the surface with quality of hoof and authority.
- 55M is soft in her design, easy fleshing, and very maternal in her overall look.

AI BRED 4/18/25 TO WLSF FIREHOUSE 911K (ASA: 4178795)

PE 5/4/25-8/29/25 TO WLSF FIREHOUSE 911K (ASA: 4178795)

LIKELY SAFE AI - EST. DUE 1/25/26



## CCS/JS DQ 57G 45M

KRJ DAKOTA OUTLAW G974

### NEXT LEVEL

KRDL CAEDENCE C37

MR HOC BROKER

### JS DAIRY QUEEN 57G

CLRS DAIRY QUEEN 606D

## LOT 58

### PB SM

REG: 4439327

BD: 2/23/24 TATTOO: 45M



LOT 58 CCS/JS DQ 57G 45M

CE	BW	WW	YW	MCE	MLK	CW	MRB	BF	REA	API	TI
8.9	3.9	81	117.6	3.7	18.2	34.9	-0.05	-0.09	0.9	112.4	72.8

- Next Level has proven himself to work well back on the MR HOC Broker influence, as indicated by the example exhibited as CCS/JS DQ 57G 45M.
- 45M is tied to countless high sellers as maternal and full sisters.
- Her front third ties high from the top side of her blade with strength of spine and a level pin set. She sits on a very flexible set of running gear and is soft and deep in her body shape.
- She will be the producing and generating kind with each sire selection during her tenure in your program.

AI BRED 4/18/25 TO WHF/JS/CCS DOUBLE UP G365 (ASA: 3658592)

PE 5/4/25-8/29/25 TO WLSF FIREHOUSE 911K (ASA: 4178795)

LIKELY SAFE AI - EST. DUE 1/25/26

## CCS/JS DAIRY QUEEN 57G 42M

SILVEIRAS STYLE 9303

### HARKERS UNLEASHED

HILB MISS OO LA LA B412

MR HOC BROKER

### JS DAIRY QUEEN 57G

CLRS DAIRY QUEEN 606D

## LOT 59

### 3/4 SM 1/4 AN

REG: 4422197

BD: 4/12/24 TATTOO: 42M



LOT 59 CCS/JS DAIRY QUEEN 57G 42M

CE	BW	WW	YW	MCE	MLK	CW	MRB	BF	REA	API	TI
7.7	4.1	77.9	119.7	3.3	17	42.3	0.31	-0.06	0.5	110.5	73.7

- Many will gravitate towards this sharp built diva!
- Crisp, cut, and chiseled in her pattern lines and front third as she blends two of the greats that influence the tan bark.
- She is smooth from every angle and seamless in all transitions with extra bone and presence.

AI BRED 4/18/25 TO WHF/JS/CCS DOUBLE UP G365 (ASA: 3658592)

PE 5/4/25-8/29/25 TO WHF/JS THE DEUCE K45 (ASA: 4144750)

LIKELY SAFE AI - EST. DUE 1/25/26

## CCS MISSIE 205M

C&C MCKINLEY 3000 EXAR

### GATEWAY FOLLOW ME F163

DUNK-W MAXINE HR 505C

COLBURN PRIMO 5153

### PVF MISSIE 8089

PVF MISSIE 0084

## LOT 60

### ANGUS

REG: 21059939

BD: 4/17/24 TATTOO: 205M



LOT 60 CCS MISSIE 205M

CE	BW	WW	YW	CEM	MLK	CW	MRB	BF	REA	\$B	\$C
2	4.5	57	96	2	16	27	0.2	0.006	0.69	107	151

- The lone Angus bred heifer in the offering from the PVF Missie 8089 donor female and sired by Gateway Follow Me F163. She's an authentic product of the disciplined breeding program affiliated with the JS brand.
- 8089 plays strong in the build and presence that 205M has to offer. Her front third is elevated with a flawless transition from blade to spine, and she maintains the level advantage to her pin set.
- She is collected on the move as she sets to the surface with a trendy hind leg with plenty of reach off both ends.

AI BRED 4/16/25 TO TCF DPL GAMBINO 303 (AAA: 20632271)

PE 5/4/25-8/29/25 TO WHF/JS THE DEUCE K45 (ASA: 4144750)

LIKELY SAFE AI - EST. DUE 1/23/26



LOT 61 GREIMANS LADY NELLIE 298

## GREIMANS LADY NELLIE 298

EXG RS FIRST RATE S903 R3

DAMERON FIRST CLASS

DAMERON NORTHERN MISS

S A V NEW YEAR 5320

SCC ECHO DELL NELLIE 810

CHAMPION HILL LADY 2652

LOT 61

ANGUS

REG: 19188276

BD: 2/15/18 TATTOO: 298

CE	BW	WW	YW	CEM	MLK	CW	MRB	BF	REA	\$B	\$C
6	1.5	56	83	6	26	24	0.1	-0.006	0.82	97	170

- Proven mature females with quality and pedigree are rarely offered by outfits like JS. They are committed to providing the best each year and have opened the gate to the Angus donor pen to bring Greimans Lady Nellie 298 for your bidding pleasure.
- A direct daughter of Dameron First Class with the powerful and substantial influence of Champion Hill Lady 2652 on the maternal side. 298 is royally bred and entrenched with the very best support dams in the Angus business.
- During her tenure, she has produced Angus females that have showcased the annual Midwest Made offering. Her look and build are flawless, and her udder quality is unmatched. Proven females are hard to part with, so seize this chance to improve your donor lineup and connect with one that has a story!
- A true sale feature that is straight from the donor pen in Prairie City, Iowa!

AI BRED 3/31/25 TO TCF DPL GAMBINO 303 (AAA: 20632271)

LIKELY SAFE AI - EST. DUE 1/7/26



CCS LADY NELLIE 201K

Daughter of Lot 61



TCF DPL GAMBINO 303

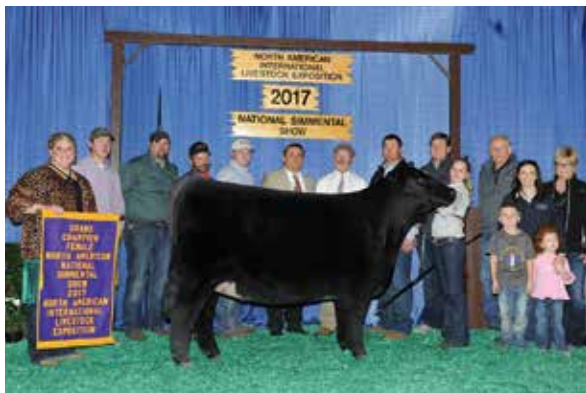
Service Sire to Lot 61



# Frozen

..... GENETICS





**WHF SUMMER 365C**  
2017 NAILE Grand Champion Purebred Simmental Heifer  
Dam of Lot 101 Embryos



**WHF GUCCI 366F**  
Dam of Lot 102 Embryos



**WHF/JS/CCS DOUBLE UP G365**  
2021 Cattlemen's Congress Reserve Grand Champion Purebred Simmental Bull  
Full Brother to Lot 101 Embryos



**JS DOUBLE OR NOTHING 4K**  
\$165,000 Maternal Brother to Lot 102 Embryos

### 3 IVF SEXED FEMALE EMBRYOS

W/C EXECUTIVE ORDER 8543B

**W/C DOUBLE DOWN 5014E**

W/C MISS WERNING 5014C

CCR WIDE RANGE 9005A

**WHF SUMMER 365C**

WHF ANDIE 365A

**LOT 101**  
**PB SM**

CE	BW	WW	YW	MCE	MLK	CW	MRB	BF	REA	API	TI
10.7	1	79.2	108.3	4.9	17	23.4	-0.2	-0.08	1.04	103.2	70

- WHF Summer 365C has become an absolute revolutionary for not just the JS Simmentals program, but the breed as a whole. Her quality leaps beyond both the barb wire fences of production focused Simmental breeders and the white picket fence that encapsulates the showring Simmental enthusiasts, proving to be a source of excellence for stockmen from all walks of life. The reign on WHF Summer 365C was dominant, and includes being a Division Champion at the NWSS, Reserve Supreme Champion Female at the Iowa Beef Expo, Champion Simmental Female at the Iowa State Fair Open Show, and perhaps most prestigious was her Supreme Champion Female title at the 2017 American Royal Livestock Show. She then went on to also be crowned the Champion Simmental Female in the NAILE Open Show.
- In production WHF Summer 365C has matched her incredible performances from the show ring. One of her most notable sons would be WHF/JS/CCS Double Up G365, the impressive W/C Double Down 5014E son that took the breed by storm when he hit the ring at the 2021 Cattlemen's Congress in Oklahoma City. He was selected as the Reserve Grand Champion Purebred Bull and has since experienced heavy use across the business!
- Seldom opportunities exist to tap into the egg inventory of WHF Summer 365C, yet on December 12, 2025, the chance to purchase full sibling embryos to WHF/JS/CCS Double Up G365 will present itself. This is a blue-chip level investment scenario!

### 3 IVF SEXED FEMALE EMBRYOS

YARDLEY UTAH Y361

**W/C RELENTLESS 32C**

MISS WERNING KP 8543U

CCR WIDE RANGE 9005A

**WHF GUCCI 366F**

WHF ANDIE 365A

**LOT 102**  
**PB SM**

CE	BW	WW	YW	MCE	MLK	CW	MRB	BF	REA	API	TI
10.1	3.2	78	110.2	4.5	16.8	20.7	0.05	-0.06	1.02	110.4	72.9

- WHF Gucci 366F, is a FULL SISTER to WHF Summer 365C. WHF Summer 365C has positioned herself as one of the highest revenue generating females in the JS Simmentals program and is the dam of the Lot 101 embryos.
- WHF Gucci 366F continues to make strides towards catching her sister at the top of the pedestal, proving that the generating potential of this cow family is highly heritable. WHF Gucci 366F would be best recognized as the dam of the \$165,000 Embryos on Snow Live Lot, JS Double Or Nothing 4K who was her 2022 natural born calf, further solidifying the genetic potency, consistency, and real-world performance that this cow family represents.
- These embryos would be full sibs in blood to the most prized mating on WHF Summer 365C with W/C Relentless 32C, the mating behind Brody Wenell's 2024 American Royal and 2024 NAILE Grand Champion Purebred Simmental Female, KayLee Langford's 2021 NAILE Grand Champion Purebred Simmental Female and the \$90,000 CCS/JS Summer 4L shown by the Hotz family!





**CLRS DAIRY QUEEN 606D**  
\$74,000 Dam of Lots 103A-B Embryos



**WHF/JS/CCS WOODFORD J001**  
2023 NAILE Grand Champion Percentage Simmental Bull  
Sire of Lot 103A Embryos



**HARKERS UNLEASHED**  
2022 & 2023 Cattlemen's Congress Grand Champion Percentage Simmental Bull  
Sire of Lot 103B Embryos

### 3 IVF SEXED FEMALE EMBRYOS

EGL FIRESTEEL 103F

**WHF/JS/CCS WOODFORD J001**

WHF SUMMER 365C

CLRS AFTER SHOCK 604 A

**CLRS DAIRY QUEEN 606D**

CLRS BEAUTY QUEEN 420 B

**LOT 103A**  
**PB SM**

CE	BW	WW	YW	MCE	MLK	CW	MRB	BF	REA	API	TI
13.8	0.3	76.5	107.5	5.5	16.3	29.3	0.26	-0.05	0.51	143	79.3

### 3 IVF SEXED FEMALE EMBRYOS

SILVEIRAS STYLE 9303

**HARKERS UNLEASHED**

HILB MISS 00 LA LA B412

CLRS AFTER SHOCK 604 A

**CLRS DAIRY QUEEN 606D**

CLRS BEAUTY QUEEN 420 B

**LOT 103B**  
**3/4 SM 1/4 AN**

CE	BW	WW	YW	MCE	MLK	CW	MRB	BF	REA	API	TI
10.1	2.1	74.5	114.6	4.4	16.9	42.7	0.39	-0.05	0.44	127.2	76.8

- CLRS Dairy Queen 606D is the absolute rare blend of ideal phenotype and curve bending genetic markers on paper. A female that can be mated to nearly any bull with substantial growth, but most of all, quality and still read relatively good on paper in comparison to contemporaries. She was the \$74,000 feature of the 2023 Midwest Made Elite Female Sale where she sold to Hilltop Simmentals of South Dakota. She has clicked to a range of sires, one of her most potent matings came with "the king of the ring" himself, MR HOC Broker. From this mating stemmed JS Dairy Queen 56G who was selected by Tucker Bayer of Wisconsin and was the popular 2020 World Beef Expo Reserve Grand Champion Simmental Heifer. A full sister, JS Dairy Queen 57G, was the 2021 IA State Fair Grand Champion Purebred Simmental Heifer and has evolved into one of our premier young donors. You will see her influence selling through daughters in the open heifer division and in the Lot 104 genetic opportunity.
- Another popular daughter, JS Dairy Queen 29H, was the 2020 American Royal and NAILE Division Champion that was a featured lot in the 2020 Midwest Made Elite Female Sale. Her and a full sister commanded hammer prices of \$25,000 and \$22,000. JS Dairy Queen 28H was Reserve in her Division at the 2020 American Royal and JS Dairy Queen 27H was Reserve in her Division at the 2020 NAILE.
- 606D is also the dam of JS Keepin' It 90 39H, the many times champion and herd sire at XTB Cattle and Fenton Farms. The two matings to sell certainly up the ante from a phenotype standpoint and deliver a fresh pair of combinations on the trident matron, the genetic relevance of the offspring will be trendsetting!

DECEMBER 12, 2025 IN PRAIRIE CITY, IOWA



**JS DAIRY QUEEN 57G**  
Dam of Lots 104A-B Embryos



**CCS/JS DQ 57G 96M**  
\$30,000 Full Sister to Lot 104A Embryos



**RP-BCR INSIGHT G302**  
Sire of Lot 104B Embryos

### 3 IVF SEXED FEMALE EMBRYOS

KRJ DAKOTA OUTLAW G974

#### NEXT LEVEL

KRDL CAEDENCE C37

MR HOC BROKER

#### JS DAIRY QUEEN 57G

CLRS DAIRY QUEEN 606D

## LOT 104A

PB SM

CE	BW	WW	YW	MCE	MLK	CW	MRB	BF	REA	API	TI
8.9	3.9	81	117.6	3.7	18.2	34.9	-0.05	-0.09	0.9	110.3	71.3

### 3 IVF SEXED FEMALE EMBRYOS

PVF INSIGHT 0129

#### RP-BCR INSIGHT G302

RP/MP BUILT TO LOVE A021

MR HOC BROKER

#### JS DAIRY QUEEN 57G

CLRS DAIRY QUEEN 606D

## LOT 104B

3/4 SM 1/4 AN

CE	BW	WW	YW	MCE	MLK	CW	MRB	BF	REA	API	TI
9.7	2.8	79	118.3	4.4	18.6	46.1	0.14	-0.04	0.71	118.9	73.1

- Here is the opportunity to purchase right from the top of our implant list, as we offer two opportunities from the up and coming, JS Dairy Queen 57G. This MR HOC Broker daughter of CLRS Dairy Queen 606D was the 2021 IA State Fair Grand Champion Purebred Simmental Heifer and is a full sister to Tucker Bayer's popular 2020 World Beef Expo Reserve Grand Champion Simmental Heifer that has become a potent SimGenetic source for the TC program.
- JS Dairy Queen 57G is the dam of the \$30,000 high selling CCS/JS DQ 57G 96M from the 2025 Fall Born Sale, she was a Next Level daughter, and full sister to the Lot 104A embryos selling. Lot 104B embryos are sired by RP-BCR Insight G302, a maternal brother to both Rocking P Private Stock H010 and RP/BCR Eminence H005 that is sired by PVF Insight 0129. He sired Josie Phillip's popular 2022 Reserve Champion Percentage Simmental Female at the AJSA Summer Classic.





**JS FLIRT A-WAY 59Y**  
Iconic Dam of Lots 105A-C

### 3 IVF SEXED FEMALE EMBRYOS

WLE COPACETIC E02

**TJSC COPING WITH DESTINY 9K**

TJSC DIAMONDS DESTINY 134C

HARKERS/JS DOMINATION

**JS FLIRT A-WAY 59Y**

JS FLATOUT FLIRTY 46T

**LOT 105A**  
PB SM

CE	BW	WW	YW	MCE	MLK	CW	MRB	BF	REA	API	TI
7.6	5	77.3	117.4	3.4	20.6	23	-0.11	-0.09	0.84	93.9	66.8

### 3 IVF SEXED FEMALE EMBRYOS

KRJ DAKOTA OUTLAW G974

**NEXT LEVEL**

KRDL CAEDENCE C37

HARKERS/JS DOMINATION

**JS FLIRT A-WAY 59Y**

JS FLATOUT FLIRTY 46T

**LOT 105B**  
PB SM

CE	BW	WW	YW	MCE	MLK	CW	MRB	BF	REA	API	TI
6.9	5.9	80.1	121.4	3.4	25.3	34.6	-0.13	-0.09	1.09	94.9	67.5

### 3 IVF SEXED FEMALE EMBRYOS

R/C SFI CREEDENCE 417J

**CONLEY STALLION 430M**

EXAR PRINCESS 1637

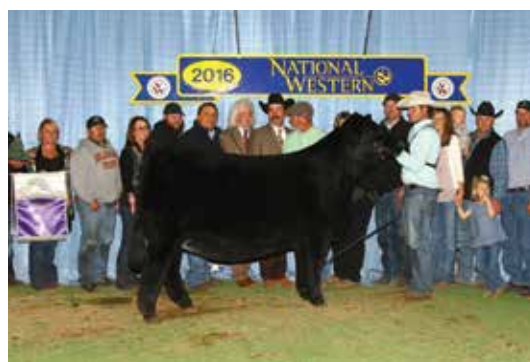
HARKERS/JS DOMINATION

**JS FLIRT A-WAY 59Y**

JS FLATOUT FLIRTY 46T

**LOT 105C**  
1/2 SM 1/2 AN

CE	BW	WW	YW	MCE	MLK	CW	MRB	BF	REA	API	TI
8.8	4.8	74.8	115.8	5	23.4	39.6	0.05	-0.05	0.79	99.6	68



**JS BLACK SATIN 9B "BOOTS"**

2015-2016 Triple Crown Winning Purebred Simmental Heifer  
Maternal Sister to Lots 105A-C Embryos



**TJSC COPING WITH DESTINY 9K**

2024 Cattlemen's Congress Supreme Champion Bull  
Sire of Lot 105A Embryos



**CONLEY STALLION 430M**  
Sire of Lot 105C Embryos

- JS Flirt A-Way 59Y has been a donor of attraction for approaching a decade now! Countless high sellers, national champions, and program building individuals of influence have descended from the influence of JS Flirt A-Way 59Y. Her most notable daughter is the legendary "Boots", the only female in the history of the Simmental breed to win Junior Nationals and the Triple Crown!
- There seems to be no slowing down the influence that this cow family is having either, as within the last 5 years daughters of JS Flirt A-Way 59Y have commanded, \$137,500, \$100,000, \$75,000, \$33,000, \$28,000, \$25,000 and \$22,000. These females have been featured in the donor pens of America's most dominating Simmental and show heifer producers. Do not take for granted the opportunity to access such a potent producer like JS Flirt A-Way 59Y.



**DUNK-W MAXINE HR 505C**  
Dam of Lot 106 Embryos



**BNWZ DIGNITY 8017**  
2021 Cattlemen's Congress ROV Reserve  
Grand Champion Angus Bull  
Sire of Lot 106 Embryos



**GATEWAY FOLLOW ME F163**  
Maternal Brother to Lot 106 Embryos



**CCS MAXINE 209M**  
\$20,000 Maternal Sister to Lot 106 Embryos

### 3 IVF SEXED FEMALE EMBRYOS

PVF INSIGHT 0129

**BNWZ DIGNITY 8017**

CCC SARA'S DREAM 5116

GAMBLES HOT ROD

**DUNK-W MAXINE HR 505C**

K B LADY MAXINE LUT 857

## LOT 106 ANGUS

CE	BW	WW	YW	CEM	MLK	CW	MRB	BF	REA	\$B	\$C
3	3.7	50	79	2	21	23	0.22	-0.008	0.64	104	161

- We feel fortunate enough to have been able to add Dunk-W Maxine HR 505C to the donor pen from the 17th Annual Embryos on Snow. She is the dam of the industry leading Gateway Follow Me F163, one of the highest semen revenue generating bulls we have been privileged to own and promote. The impact that he has made is nothing short of impressive, and with sons like the \$460,000 half-interest Conley Lead The Way 0378 added to his list of progeny, you can trust that his name is etched in the history books.
- We have not often offered up genetic opportunities on this genetic gem, but it is with great excitement that we present the opportunity to tap into this iconic matron through a mating we think aligns perfectly and has the potential to generate stock that are elite from both a phenotypic and pedigree standpoint.
- The BNWZ Dignity 8017 sired embryos represent the culmination of proven Angus royalty. The list of six-digit daughters from this sire group grows exponentially every sale season, and he represents the "go-to" option when planning your breeding program for generating elite show heifers.

MIDWEST MADE ELITE FEMALE SALE





**PVF MISSIE 8089**  
Dam of Lot 107 Embryos



**UDE ELLIE 153E**  
2018 NAILE Grand Champion Junior Angus Heifer  
Dam of Lot 108 Embryos



**ROSEWOOD BELLAGIO 090**  
\$320,000 Valued Sire of Lot 107 Embryos



**BNWZ DIGNITY 8017**  
2021 Cattlemen's Congress ROV Reserve Grand Champion Angus Bull  
Sire of Lot 108 Embryos

### 3 IVF SEXED FEMALE EMBRYOS

KR CASINO 6243

**ROSEWOOD BELLAGIO 090**

ROSEWOOD GEORGINA 290Z

COLBURN PRIMO 5153

**PVF MISSIE 8089**

PVF MISSIE 0084

## LOT 107 ANGUS

CE	BW	WW	YW	CEM	MLK	CW	MRB	BF	REA	\$B	\$C
4	3.7	54	97	4	24	28	0.32	0.02	0.32	112	178

- Combining several of the most dominate and highest revenue generating cow families in the Angus breed, comes a rarely offered access point into the PVF Missie 8089 female, through her mating with the exciting, Rosewood Bellagio 090, a bull that is on the cusps of being the next "go-to" Angus AI sire. The maternal granddam of these embryos, PVF Missie 0084 is an absolute icon of the respected program, being a maternal sister to the legendary PVF Insight 0129, and a female that wrote quite the impressive resume in her own right.
- The dam of these embryos is a maternal sister to both the 2015 NJAS Grand Champion Owned Female, and the 2016 Reserve Grand Champion Owned Female, the later of the two, PVF Missie 5216 is the dam of the trending sires, PVF Marvel 9185 and PVF Capone 2104. The Missie cow family is held amongst the highest of regards around Angus enthusiasts, and here you are accessing the source of the most elite quality, combine this with the most anticipated son of KR Casino 6243 in existence and we are serving you up a recipe for success.

### 3 IVF SEXED FEMALE EMBRYOS

PVF INSIGHT 0129

**BNWZ DIGNITY 8017**

CCC SARA'S DREAM 5116

COLBURN PRIMO 5153

**UDE ELLIE 153E**

SLL ELLIE 2201

## LOT 108 ANGUS

CE	BW	WW	YW	CEM	MLK	CW	MRB	BF	REA	\$B	\$C
8	2	39	57	11	3	7	0.3	0.021	0	89	133

- This sexed female Angus embryo mating comes from the 2018 NAILE Grand Champion Junior Angus Heifer, UDE Ellie 153E. The mating is sired by the "go-to" Angus sire of the moment, BNWZ Dignity 8017 and has the potential to propel the investor into a new league of Angus seedstock production!
- The dam of this mating was admired for her combination of stoutness of feature, square build at the surface, true skeletal quality and added dimension when considering the picture-perfect outline she painted from the profile.
- Maternal sisters to 153E would include Sara Sullivan's 2020 NJAS Grand Champion Owned Heifer and 2020 NAILE Grand Champion Junior Angus Heifer, UDE Ellie 9230. UDE Ellie 9230 is emerging as a leader of the pack from the SULL branded Angus program with multiple daughters commanding over \$200,000 over the past three years. Another popular maternal sister to 153E, UDE Ellie 9197, was a many times champion for KayLee Langford that has also turned into a trusted genetic source for the UDE prefix.



**HARKERS UNLEASHED**  
Sire of Semen Selling as Lot A1-10



**HARKERS UNLEASHED**  
2022 & 2023 Cattlemen's Congress Grand Champion  
Percentage Simmental Bull  
Sire of Semen Selling as Lot A1-10



**CCS/JS SUMMER 47L**  
2024 OH State Fair Reserve Grand Champion  
Percentage Simmental Heifer  
\$70,000 Daughter of Harkers Unleashed



**CCS/JS SUMMER 22N**  
Daughter of Harkers Unleashed  
She Sells as Lot 1

## HARKERS UNLEASHED

GAMBLES HOT ROD  
**SILVEIRAS STYLE 9303**  
SILVEIRAS ELBA 2520  
LLSF UPRISING Z925  
**HILB MISS 00 LA LA B412**  
AJE GABBY R7

**LOT A1-10**  
**1/2 SM 1/2 AN**  
BD: 2/14/20 REG: 3773312

**10 PACKAGES OF 1 UNIT OF  
CONVENTIONAL SEMEN**

CE	BW	WW	YW	MCE	MLK	CW	MRB	BF	REA	API	TI
6.6	4.7	79.5	130	3.3	18.6	49.4	0.6	-0.04	0.4	116.5	79.3

- The now deceased Harkers Unleashed has left behind a sensational set of progeny across the country!
- Harkers Unleashed was dominantly campaigned during his time on the show road by the Harker family of Indiana. His list of wins would include 2021 IN State Fair Supreme Champion Bull, 2021 NAILE Reserve Grand Champion Percentage Bull alongside his full sister, Harkers Htoney Bea H116. She was selected as the 2021 NAILE Grand Champion Junior Percentage Simmental Heifer for the DeCap family of Iowa. Harkers Unleashed was the 2022 and 2023 Cattlemen's Congress Grand Champion Percentage Simmental Bull!
- Some of his most notable daughters would include the \$70,000 CCS/JS Summer 47L, a many times champion for the Liggett family of Ohio. Another popular daughter of Harkers Unleashed is the \$40,000 CCS/JS Summer 50L, the 2024 IA State Fair Grand Champion Percentage Simmental Heifer for Megan Brown!
- Semen is extremely limited, don't miss out on the opportunity to add this "once in a lifetime" type sire to your breeding program!





WHF/JS/CCS WOODFORD J001  
Sire of Semen Selling as Lot B1-10



WHF SUMMER 365C  
2017 NAILE Grand Champion Simmental Heifer  
Dam of WHF/JS/CCS Woodford J001



JSUL REBA 4256M  
\$100,000 Daughter of WHF/JS/CCS WOODFORD J001



KCC1 3BCC BLACK LABEL 4016M  
\$100,000 Son of WHF/JS/CCS WOODFORD J001

## WHF/JS/CCS WOODFORD J001

G A R SURE FIRE

EGL FIRESTEEL 103F

TJ 22X

CCR WIDE RANGE 9005A

WHF SUMMER 365C

WHF ANDIE 365A

**LOT B1-10**

**3/4 SM 1/4 AN**

BD: 9/21/21 REG: 4068398

**10 PACKAGES OF 3 UNITS OF  
SEXED FEMALE SEMEN**

CE	BW	WW	YW	MCE	MLK	CW	MRB	BF	REA	API	TI
14	1.2	83.4	115.9	5.4	17.4	22.5	0.34	-0.05	0.53	141.2	82

- WHF/JS/CCS Woodford J001 is a three-quarter blood Simmental that has taken the business by storm with his rookie calf crop! He is a direct son of the \$1 million+ producing WHF Summer 365C, one of the most important females in the entire Simmental breed!
- He was the 2023 NAILE Grand Champion Percentage Simmental Bull and the 2024 Cattlemen's Congress Reserve Grand Champion Percentage Simmental Bull.
- WHF/JS/CCS Woodford J001 is flawless in terms of his skeletal design, stamping his progeny with unparalleled structural integrity. He is sired by EGL Firesteel 103F, making him an outcross genetic option to today's most heavily used sire options.
- The first progeny of WHF/JS/CCS Woodford J001 include a long list of high sellers, which would include the \$100,000 KCC1 3BCC Black Label 4016M, a son that was bred in the Kearns Cattle Company breeding program that was purchased by Roller Ranch. Other high sellers would also include the \$100,000 heifer sold by JS Simmentals and the \$82,500 high selling heifer that topped the Black Label. Countless other daughters and sons have sold for \$20,000+ over the last year!
- Suitable for use on heifers without sacrificing quality or style!





**CONLEY STALLION 430M**  
Sire of Semen Selling as Lot C1-10

**CONLEY STALLION 430M**  
2025 Cattlemen's Congress Reserve Grand Champion Percentage Simmental Bull

## CONLEY STALLION 430M

JSUL SOMETHING ABOUT MARY 8421

**R/C SFI CREEDENCE 417J**

SFI LOVE ME LATER A9X

S&R ROUNDTABLE J328

**EXAR PRINCESS 1637**

EXAR PRINCESS 5391

**LOT C1-10**

**1/2 SM 1/2 AN**

BD: 3/20/24 REG: 4441115

**10 PACKAGES OF 3 UNITS OF  
SEXED FEMALE SEMEN**

CE	BW	WW	YW	MCE	MLK	CW	MRB	BF	REA	API	TI
12.8	2.2	75	114.5	7.3	17.2	44.5	0.25	-0.01	0.61	113.7	73.1

- NEW to JS Simmentals is the very impressive and appropriately named, Conley Stallion 430M, a son of R/C SFI Creedence 417J that is supported by the immortal influence of EXAR Princess 1637, the dam of the \$920,000 valued Conley Lead The Way 0738!
- Conley Stallion 430M was admired by stockman from all segments of the industry at the 2025 Cattlemen's Congress when he was selected as the Percentage Simmental Calf Champion and Reserve Grand Champion! Incredible in terms of his feet and legs, big hipped, bold in his rib shape, and square off all four corners. He offers tremendous spring and depth of rib, which is further complimented by his extremely well-balanced look from the profile.
- The dam of Conley Stallion 430M is the late EXAR Princess 1637, one of the high-income generating Angus females at Conley Cattle. Several maternal sisters have sold for \$50,000+ over the last few years, with Conley Princess 4781 topping the 2024 Conley Cattle Fall Production Sale at \$140,000 to the Cook family of California!
- A truly royal SimGenetic pedigree that has the potential to be utilized in several different breeding scenarios. Conley Stallion 430M is a logical option for those progressive minded breeders that are looking to create double half-bloods or percentage Simmental cattle with superior maternal functionality and unrivaled eye appeal!



**EXAR PRINCESS 1637**  
Prolific Dam of Conley Stallion 430M



**R/C SFI CREEDENCE 417J**  
2023 Cattlemen's Congress  
Grand Champion  
Purebred Simmental Bull  
Sire of Conley Stallion 430M



**CONLEY LEAD THE WAY 0738**  
\$920,000 Valued Maternal Brother to  
Conley Stallion 430M





**S B C BUFFALO TRACE 133K**  
Sire of Semen Selling as Lot D1-10

- An incredible son of the powerful W/C Relentless 32C that was bred in the Stephens Beef Cattle program of Kentucky. He is extremely similar to his sire in terms of his pattern from the side. A very attractive profiling, smooth made, clean chested bull that is flawless in terms of his skeletal design.
- He is a bull that we consider to be an alternative to his iconic sire, W/C Relentless 32C.
- The maternal side of his pedigree traces to the influence of the prolific Circle T Shez IT W056 donor dam. The dam of S B C Buffalo Trace 133K is a daughter of CCR Wide Range 9005A, the sire of WHF Summer 365C.
- S B C Buffalo Trace 133K is a new and exciting addition to the herd sire battery at JS Simmentals! His strong maternal influence and ultra-eye appealing style is certain to add value to any program. Look for S B C Buffalo Trace 133K to sire elite show heifers with added length and extension!



**W/C RELENTLESS 32C**  
Legendary Sire of S B C Buffalo Trace 133K



**WLSF FIREHOUSE 911K**  
Sire of Semen Selling as Lot E1-10

- It is with great enthusiasm that we introduce you to WLSF Firehouse 911K, a direct son of the iconic WHF/JS/CCS Double Up G365, one of the greatest breeding bulls ever utilized at JS Simmentals.
- WLSF Firehouse 911K was the 2024 NAILE Reserve Grand Champion Purebred Simmental Bull and 4th Overall Bull on the green chips of Freedom Hall. His extra length and substance is further complimented by a flawless build and skeletal design.
- He is a tremendous calving ease option that has been used on heifers with great success.
- The maternal side of his pedigree traces to the influence of the iconic RP/MP Right To Love 015U, the dam of HPF Quantum Leap Z952 and THSF Lover Boy B33.
- We love the basic build, flexibility, and fleshing ease that WLSF Firehouse 911K brings to the equation. A Purebred Simmental option that is suitable for use on heifers without sacrificing eye appeal, structural integrity, or maternal strength!



**WLSF FIREHOUSE 911K**  
2024 NAILE 4th Overall Supreme Champion Bull

## S B C BUFFALO TRACE 133K

YARDLEY UTAH Y361  
**W/C RELENTLESS 32C**  
MISS WERNING KP 8543U  
CCR WIDE RANGE 9005A  
**WLE SHEZ IT D056**  
CIRCLE T SHEZ IT W056

### LOT D1-10

**PB SM**

BD: 3/23/22 REG: 4129329

**10 PACKAGES OF 3 UNITS OF  
SEXED FEMALE SEMEN**

CE	BW	WW	YW	MCE	MLK	CW	MRB	BF	REA	API	TI
8.9	5.1	70.2	106.1	3.3	14.8	28.4	-0.05	-0.07	1.1	94.7	64.9

## WLSF FIREHOUSE 911K

W/C DOUBLE DOWN 5014E  
**WHF/JS/CCS DOUBLE UP G365**  
WHF SUMMER 365C  
CCR WIDE RANGE 9005A  
**IVS/JJ/B&K LOVE ME 338E**  
HPF RIGHT TO LOVE Z338

### LOT E1-10

**PB SM**

BD: 4/10/22 REG: 4178795

**10 PACKAGES OF 3 UNITS OF  
SEXED FEMALE SEMEN**

CE	BW	WW	YW	MCE	MLK	CW	MRB	BF	REA	API	TI
14.3	0.9	77.1	109	7.6	14.2	39.7	-0.16	-0.04	1.01	108.8	71



**ROSEWOOD BELLAGIO 090**  
Sire of Semen Selling as Lot F1-10



**CONLEY DT GEORGINA 1076**  
2023 NJAS Grand Champion Owned Heifer  
Member of the "Georgina" Cow Family



**CCS MISSIE 211N**  
Daughter of Rosewood Bellagio 090  
She Sells as Lot 31

## ROSEWOOD BELLAGIO 090

CFCC BLACK JACK 001

**KR CASINO 6243**

MALSONS SAVANNAH 27Y

CHAMPION HILL FULLBACK 380

**ROSEWOOD GEORGINA 290Z**

CHAMPION HILL GEORGINA 1693

**LOT F1-10**

**ANGUS**

BD: 9/14/20 REG: 20046900

**10 PACKAGES OF 2 UNITS OF  
CONVENTIONAL SEMEN**

CE	BW	WW	YW	CEM	MLK	CW	MRB	BF	REA	\$B	\$C
2	3.4	50	90	5	26	28	0.31	0.02	0.32	111	177

- Rosewood Bellagio 090 is the \$160,000 high selling bull from the 2024 Conley Cattle Bull Sale! Rosewood Bellagio 090 is arguably the most impressive son of the great KR Casino 6243 in existence!
- It is no secret that KR Casino 6243 has made a substantial impact on the Angus breed in a short amount of time with extremely limited semen available. We have searched near and far to find an alternative to KR Casino 6243, and in our opinion, we have found a better option that brings even more cow power to the table!
- Rosewood Bellagio 090 is supported by the famed Champion Hill Georgina cow family that produced the iconic Conley DT Georgina 1076, the 2023 NJAS Grand Champion Owned Heifer for the Collum family of Oklahoma. 1076 was also selected as the 2023 Cattleman's Congress ROV Reserve Grand Champion Angus Heifer.
- He offers the same stoutness and power that KR Casino 6243 offers, with more length and extension in a smoother made package. Rosewood Bellagio 090 is a MUST USE sire if you're interested in generating elite Angus seedstock!

MIDWEST MADE ELITE FEMALE SALE





BOE FADE ET

Sire of Semen Selling as Lot G1-10

## BOE FADE ET

BOE GARTH

BOE EPIC

MISS BOE 502R

GOET DRIVING 80

BOE 553C

BOE 342A

## LOT G1-10

## MAINE-ANJOU

BD: 3/30/23 REG: 546361

10 PACKAGES OF 2 UNITS OF  
SEXED FEMALE SEMEN

CE	BW	WW	YW	MCE	MLK	CW	MRB	BF	REA
3	2.1	26	43	-3	29	25	0.25	-0.03	0.46

- The Maine-Anjou breed continues to surge in popularity due largely in part to the extreme quality that the cattle represent. BOE Fade ET is our most recent acquisition in the Maine-Anjou breed due to his unwavering skeletal quality, style, and balance. BOE Fade ET is sired by the dominant 2018 NWSS Grand Champion, BOE Epic, one of the greatest breeding bulls in the history of the Maine-Anjou breed!
- The maternal side of his pedigree brings forth the influence of BOE 553C, one of the most prolific females in the database. BOE Fade ET is a FULL SISTER to BOE Miss Fitzy ET, the dominant National Champion turned dominant producer for the Tlach family of Iowa. BOE Miss Fitzy ET has emerged as one of the most decorated donors in the industry producing several sons that have found their way into stud. BOE Miss Fitzy ET is the dam of TLAC Safety First 1913J, a promotional Maine Angus AI sire that is owned by Minnaert Show Cattle. She is also the dam of the \$150,000 high selling Maine-Anjou AI sire, TLAC Hits Different 1409L ET, who sold in the 18th Annual Embryos on Snow to RJ Cattle Company and Bowling Cattle Company!
- BOE Fade ET was the 2024 NAILE Grand Champion Maine-Anjou Bull. His unmatched skeletal quality and substance of foot and bone is further enhanced by his genuine shape and squareness of build. His look and balance from the side is what truly sets him into a league of his own!
- Use BOE Fade ET to generate elite Maine-Anjou, MaineTainer, or Maine Angus seedstock that have the credentials to command huge premiums in the sale ring and win big on the tan bark!

BOE FADE ET  
2024 NAILE Grand Champion  
Maine-Anjou BullBOE EPIC  
2018 NWSS Grand Champion  
Maine-Anjou Bull  
Sire of BOE Fade ETBOE MISS FITZY ET  
2021 Cattlemen's Congress Reserve  
Grand Champion Maine-Anjou Heifer  
Full Sister to BOE Fade ET

DECEMBER 12, 2025 IN PRAIRIE CITY, IOWA





CCS/JS Summer 50L  
2024 IA State Fair Grand Champion Percentage Simmental Heifer



CCS/JS/LFTZ Summer L378  
2024 American Royal Grand Champion Purebred Simmental Heifer



JS Dairy Queen 87L  
2024 KILE Reserve Grand Champion Purebred Simmental Heifer



CCS/JS Summer 47L  
2024 OH State Fair Reserve Grand Champion Percentage Simmental Heifer



JS Dairy Queen 87L  
2024 Harvest Classic Supreme Champion Breeding Heifer



JS Pearl 52K  
2023 NE State Fair Supreme Champion 4-H Breeding Heifer



CCS/JS/LFTZ Summer L378  
2024 AJSA National Classic 3rd Overall Purebred Simmental Heifer



WHF/JS/CCS Woodford J001  
2023 NAILE Grand Champion Percentage Simmental Bull



Harkers Medicine Man  
2024 NAILE Reserve Grand Champion Percentage Simmental Bull





WHF/JS/CCS Double Up G365  
2021 Cattlemen's Congress Reserve Grand Champion Purebred Simmental Bull



Harkers Unleashed  
2022 Cattlemen's  
Congress Grand Champion  
Percentage Simmental Bull



JS Dairy Queen 56G  
2020 World Beef Expo  
Reserve Grand Champion  
Heifer



UDE Ellie 153E  
2018 NAILE Grand Champion Angus Female Jr. Show



WHF Andie 369F  
2020 NWSS Division  
Champion



WHF Summer 365C  
2017 NAILE Grand Champion Simmental Heifer



CCS WHF Summer 50F  
2019 AJSA National Classic  
Reserve Champion Bred &  
Owned Heifer



JS Black Satin 9B  
2016 NWSS  
Grand Champion Purebred  
Female



JS Black Satin 9B  
2015 NAILE Grand Champion Purebred Female



JS Black Satin 9B  
2015 AJSA Summer Classic  
Grand Champion Purebred  
Female



PO BOX Z  
DE SOTO, KS 66018

Presorted  
First Class  
US Postage  
**PAID**  
SlateGroup

AN ELITE MULTI-BREED OFFERING SUPPORTED BY MATERNAL EXCELLENCE!

