

Clear Vision

FALL PRODUCTION SALE

SATURDAY, DECEMBER 6, 2025

1:00 PM ET • C&C SALE FACILITY • WINDER, GEORGIA





C&C FARMS

Winder, GA

Dwight, Sandy & Cindy Cooper
Steven, Carly & Jettson Cooper

Dwight (706) 215-1251

Cindy (706) 224-6768

Steven (706) 215-2285

GUEST BREEDERS

CIRCLE T FARM

Murfreesboro, TN

Buddy Ogles (615) 849-6510

T-BAR-T

Sedalia, MO

Trent Templeton (660) 620-6788

SALE SCHEDULE

FRIDAY, DECEMBER 5, 2025

Cattle on display at the C&C Farms
Sale Facility in Winder, GA. Join us for light
refreshments Friday evening.

SATURDAY, DECEMBER 6, 2025

9:00 AM - Cattle on display

1:00 PM - Clear Vision Production Sale





Welcome

Fellow breeders and guests,

We welcome you to the Clear Vision Spring Production Sale at C&C Farms! We firmly believe that this set of show heifer/donor prospects may very well be the deepest and highest quality set that we have ever offered. Additionally, we are proud to offer a set of late fall and spring calving females that are from the heart of our respective operations. The pedigree, phenotype and potential that support this set of females is second to none. We welcome you to the farm in Winder, Georgia to evaluate this set of cattle for yourself.

C&C Farms has developed a very solid operation over the years. We know that our pursuit for excellence and perseverance to win have led to many backdrop photos for us and our clients alike. The 2025 show season started off with a huge win in Denver with a Jestress B79 daughter claiming the Jr. Show Champion Percentage Female at the 2025 National Western. Over the last ten years at the Georgia National Fair, nine of those years, cattle that were born and bred here at C&C have taken home the Supreme or Reserve Supreme Champion Breeding Female title, along with many other top 5 placings. This year the Supreme Champion Female at the Georgia National Fair is owned by Halley Elrod! We have maintained a dominant presence over the years on the tan bark and have earned the upmost respect from our peers and fellow breeders. Bulls like Vision, 20-20, and The Duke have raised the bar for multiple programs nationwide with a whole lot of repeat use. Two up and coming sires here at C&C that we think will be headliners for years to come are FRKG Marvel, and Mr. CCF Saddle Up. Between the covers of this book, one will notice several primary cow families that have helped achieve our goals to this point and we believe they will continue to do so. To name a few, the Jestress family line, Dew The Stroke, Breaking Hearts, Up The Limit and Bcardi K27E. We feel very secure with our breeding program that we will remain in the forefront for years to come.

We are very excited about this offering as we feel it is one of the very best we have ever assembled. A huge thank you to our guest breeders and genetic partners that make this event possible with their quality stock. We look forward to seeing everyone on December 6th.

The C&C Crew



We look forward to welcoming each of you to C&C Farms for this seasons Annual Production Sale. It's no secret that the cattle industry is witnessing historic times at all levels and facets of the industry, and as a nation, as we look to increase cow numbers, it's critical to learn lessons from the past and grow our herd with cowman fundamentals in mind. The C&C herd has long been noted for producing cattle that withhold the fundamentals necessary to excel at every level of the production sector.

As you read through this year's offering and get a chance to view this set in person, I'm sure one aspect you will note is the foot quality, udder quality, and fleshing ability this herd is known for. The pair division we will offer is stacked from the first lot to the last, these females are doing a superb job of raising the next generation, and many of these females will be serviced back to the Hartman sire Marvel to further booster this group. The bulls being offered have been developed on a roughage based diet, stand on a strong foot, and have the right kind of disposition to become mainstay sires for years to come. The open heifer division is loaded and many of these females have already made their way to the show ring. Within this division you'll find national level contenders, high quality replacements, and future donor level standouts. Lastly as you study the genetic offering you'll find that we are truly giving you the keys to the castle within this group. C&C Farms is offering genetics backed by the top donors in their arsenal and in many cases, allowing you to pick the sire of your choice to flush these females to develop your own legacy.

Videos are available for each and every lot in this sale and can be found at CCI.Live to allow each of you a chance to study this offering from the comfort of your home. We do strongly encourage each of you if you have a chance to make the trip to Winder, GA to view this set in person. If you have any questions, feel free to reach out and we will be happy to assist you in any way.

Thank you for your consideration,
Dwyer Cattle

SALE DAY PHONES

Dwight Cooper (706) 215-1251
Steven Cooper (706) 215-2285
Cindy Cooper (706) 224-6768
Trent Templeton (660) 620-6788
Morgan McDaniel (706) 510-5336
Tad Harper (229) 392-4711
Buddy Ogles (615) 849-6510

SALE MANAGEMENT



Nick Dwyer (309) 337-6404
Bob Dwyer (309) 337-1404
www.dwyercattle.com

SALE STAFF

Eddie Burks, *Auctioneer* (270) 991-6398
Tim Dietrich, *Ring Service*. . . . (859) 619-0342
Josh Jasper, *Ring Service* (859) 285-8702

SALE CONSULTANTS

Dalton Lundy (502) 727-6898
Thomas Lundy (502) 471-0354

ONLINE BIDDING

Bid online and
watch the sale live, CCI.live
Call/Text, 405-400-9505 • schedule@cci.live



INSURANCE

Jame Secondino-Kreiger. (812) 208-0956

ACCOMMODATIONS

Hampton Inn (706) 335-6161
Commerce, GA
Comfort Suites (706) 336-0000
Commerce, GA
Holiday Inn Express (706) 336-0070
Commerce, GA
Holiday Inn (706) 549-4433
Athens, GA

SALE LOCATION

C&C Farms Sale Facility • 1632 Geiger Road • Winder, GA 30680

DIRECTIONS TO THE SALE

From Atlanta, GA Take I-85 North to Exit 137. Take a RIGHT from Exit 137 on to 129. Go up 129 and turn RIGHT on Galilee Church Road, then turn LEFT on W.H. Hays Road. Then, turn LEFT on Geiger Road on the right.

From Commerce, GA Take 129 toward Jefferson. Take a LEFT from 129 onto Galilee Church Road then turn LEFT on to W.H. Hays Road. Then turn LEFT on to Geiger Road. The sale facility will be approximately 1 mile down Geiger Road on the right.

From Athens, GA Take a LEFT from 129 onto Galilee Church Road then turn LEFT on to W.H. Hays Road. Then, turn LEFT on to Geiger Road. The sale facility will be approximately 1 mile down Geiger Road on the right.

TERMS & CONDITIONS

All lots sell in accordance with the suggested guidelines of the American Simmental Association. Announcements made sale day from the block during the sale take precedence over printed material in this catalog. Payment will be accepted in the form of cash, check, or credit card. All cattle must be paid for prior to release. All funds are to be paid to DP Sales Management, LLC in U.S. dollars. No cattle will be transferred, delivered, or released without full payment. In the event you need expedited registration paper transfers please make plans to pay in full on sale day, and pay a priority fee. All sales are final.

INSPECTION

Sale cattle will be available for inspection at the sale site all day on Friday. Please call Steven or Dwight to schedule to view the offering.

LIABILITY

All persons attending this sale do so at their own risk. The owners, auction service, or sale staff assume no liability for accidents or property loss. Cattle become the property of the buyer when sold.

HEALTH PAPERS

Interstate health papers will be available on all cattle selling. Dr. Troy Pickereel will be on site for health papers. Canadian buyers are appreciated and welcomed, but all tests, board, and transportation are at the cost of the buyer.

ANNOUNCEMENTS

All announcements from the block will have precedence over the materials printed in this catalog. The auctioneer will settle all bidding disputes.

TRUCKING

The owners and sale staff will assist in your trucking needs, but trucking arrangements are the responsibility of the buyer. We will have reliable truckers on site. Trucking will be coordinated at the best rates and in a timely manner in consistency with settlement. Please contact any of the listed truckers for assistance.

Dick Coleman (765) 461-0954 • Bryan Wyatt (423) 240-5533

REGISTRATIONS

All cattle with a registration number listed for their respective breed will be transferred to the new owner in a timely manner following settlement. To ensure correct transfers please have your ASA number with you sale day.

Catalog designed by



www.generation6.co

herd sire UP THE LIMIT COW FAMILY



It is with great pleasure and without a doubt one of the best purebred bulls to walk the grounds of C&C as we introduce Mr CCF Dirty South. A direct son of the R/F Up The Limit donor and by the great SO Remedy! Dirty South puts a lot of the right pieces together. Huge footed, impeccable in his hind leg structure, stout square hipped, big centered and pulls it all together with a front end that is long and attractive. We think that he's the kind that will make a positive impact on either end of the industry. **Terms announced sale day.**

lot 1 MR CCF DIRTY SOUTH

DOB: 5/2/24 | ASA#: 4529850 | Tattoo: M901 | PB SM

HPF/HILL UPRISING C104

WLE COPACETIC E02

sire **SO REMEDY 7F**

X

dam

R/F UP THE LIMIT H214

B&K CREAM SODA 8D

CMFM BURN BABY

CE	BW	WW	YW	MCE	Milk	MWW	Marb	REA	API
12.7	2.0	79.0	123.6	5.0	18.1	57.5	-0.08	0.95	105.6

frozen genetics UP THE LIMIT COW FAMILY



lot 2



SO Remedy 7F
Sire of Lot 2A



FRKG Marvel 271M
Sire of Lot 2B

lot 2 R/F UP THE LIMIT H214

DOB: 1/19/20 | ASA#: 3751776 | Tattoo: H214 | PB SM

HPF QUANTUM LEAP Z952

SVF STEEL FORCE S701

g sire **WLE COPACETIC E02**
CMFM JOY 02ZB

X

dam **CMFM BURN BABY**
LAZY H BURN BABY BURNR34

CE	BW	WW	YW	MCE	Milk	MWW	Marb	REA	API
11.1	2.6	78.6	122.7	4.2	11.8	51.0	0.06	1.00	108.2

Selling one IVF cycle. The opportunity to jump into the Up The Limit cow family is now! One of the most consistent donors that we have ever had the pleasure of working with! As you flip through the catalog, you will see the influence that H214 has had on our programs in just a short amount of time. It's exciting to know that when a calf hits the ground no matter the bull or heifer you can get excited! The progeny of H214 have risen to the top of each production sale for the last several years and have commanded top dollar. We are now seeing the first calf heifers of Up The Limit start into production and they are impressive! The bulls are stout, massive, and the cattlemen's kind. Endless opportunities here in this IVF flush!

lot 2A SO REMEDY 7F X R/F UP THE LIMIT H214

Three Purebred Simmental Embryos

Planned Mating Projected EPDs

CE	BW	WW	YW	MCE	Milk	MWW	Marb	REA	API
12.7	2.0	79.1	123.6	5.1	18.1	57.6	-0.08	0.95	103.7

Selling 3 conventional embryos guaranteeing one pregnancy if implanted by a certified embryologist.

lot 2B FRKG MARVEL 271M X R/F UP THE LIMIT H214

Three Purebred Simmental Embryos

Planned Mating Projected EPDs

CE	BW	WW	YW	MCE	Milk	MWW	Marb	REA	API
12.2	2.9	78.1	120.2	4.8	15.4	54.4	0.05	0.90	106.7

Selling 3 conventional embryos guaranteeing one pregnancy if implanted by a certified embryologist.

open heifer UP THE LIMIT COW FAMILY



\$40,000 Valued Maternal Sister to Lot 3



\$11,500 Maternal Sister to Lot 3



VCL Foresight
Sire of Lot 3

Up The Limit continues to show her versatility though each calf crop. One direction is a prime example of the quality that she continues to produce. Long and extended, big center rib, with flawless structure. The arrogance this one carries walking around the pen is hard to ignore. Simply put, you can't walk around the barn without looking at her. A full sister claimed division wins at the 2025 Simmental Breeders Sweepstakes. This one is built to keep getting better.

lot 3 CIRCLE T ONE DIRECTION

DOB: 2/16/25 | ASA#: 4594186 | Tattoo: N803 | PB SM

MR CCF 20-20

WLE COPACETIC E02

Sire VCL FORESIGHT
HCC0 COUNTESS 412D

X

Don R/F UP THE LIMIT H214
CMFM BURN BABY

CE	BW	WW	YW	MCE	Milk	MWW	Marb	REA	API
9.5	3.2	80.9	117.4	3.3	17.0	57.3	0.11	0.97	111.1

Bred Heifer UP THE LIMIT COW FAMILY



\$13,000 Full Sister to Lot 4



Mr CCF Saddle Up
Maternal Brother to Lot 4



Reckoning 711F
AI Sire of Lot 4

lot 4 CIRCLE T ULTIMATE DECISION

DOB: 9/3/23 | ASA#: 4321628 | Tattoo: L810 | PB SM

VCL FORESIGHT

WLE COPACETIC E02

sire STCC TECUMSEH 058J
HF SERENA

X

dam R/F UP THE LIMIT H214
CMFM BURN BABY

CE	BW	WW	YW	MCE	Milk	MWW	Marb	REA	API
8.3	3.5	81.3	119.0	2.7	16.5	57.0	0.19	1.02	118.3

The quality of the offspring that the Up The Limit donor has brought to this sale are as good as we have ever offered. There have been many discussions as to whether we should be keeping this one for the donor pen. After the back-and-forth conversation we always come back to the same conclusion, we have always wanted to bring our best to the sale table and here she is. This Tecumseh daughter is as good as any bred that we have ever offered. Bold in her rib shape, flawless in her skeletal build, stout hipped and moves like a cat. It's like this that you wish you had a pasture full of. Bred to calve to the many time champion Reckoning 711F. **AI'd to Reckoning 711F on 5/12/25.**

proven donor
BLACKBIRD COW FAMILY



lot 5

S & C



HBE G-Money
Son of Lot 5



Daughter of Lot 5
12th Overall B&O Female 2023 Simmental Jr. Nationals



FRKG Marvel 271M
Service Sire of Lot 5

Where to start? E51 was shown very successfully by Hailey Eads and has become a lead donor in our program. She was Reserve Percentage Heifer 2018 South Central Regionals and Champion 4-H Percentage Female 2019 Missouri State Fair. She has raised multiple champions. As a first calf heifer she raised HBE G-Money who went on to be named Champion B&O Percentage Bull 2020 Simmental Jr. Nationals, 4th Overall B&O Percentage Bull 2021 Simmental Jr. Nationals, Champion FFA Percentage Bull 2021 Missouri State Fair and Multiple Supreme Bull at Jackpots. She has produced several division winning females at the Missouri State Fair and Jackpot champions. E51 is a powerhouse cow that flat puts the right look in her offspring with a standout pedigree on top and bottom to boot! **AI'd to FRKG Marvel 271M before sale day.**
Bull calf (ASA# 4594811) born 9/2/25 by ANBC/T-T Noble L16.

lot 5 & 5A
T-T BLACKBIRD E51

DOB: 10/22/17 | ASA#: 3375628 | Tattoo: E51 | 1/2 SM 1/2 AN

MR CCF VISION

S A V BRAVE 8320

sire **MR CCF 20-20**

X dam **CHAMPION HILL BLACKBIRD 8003**

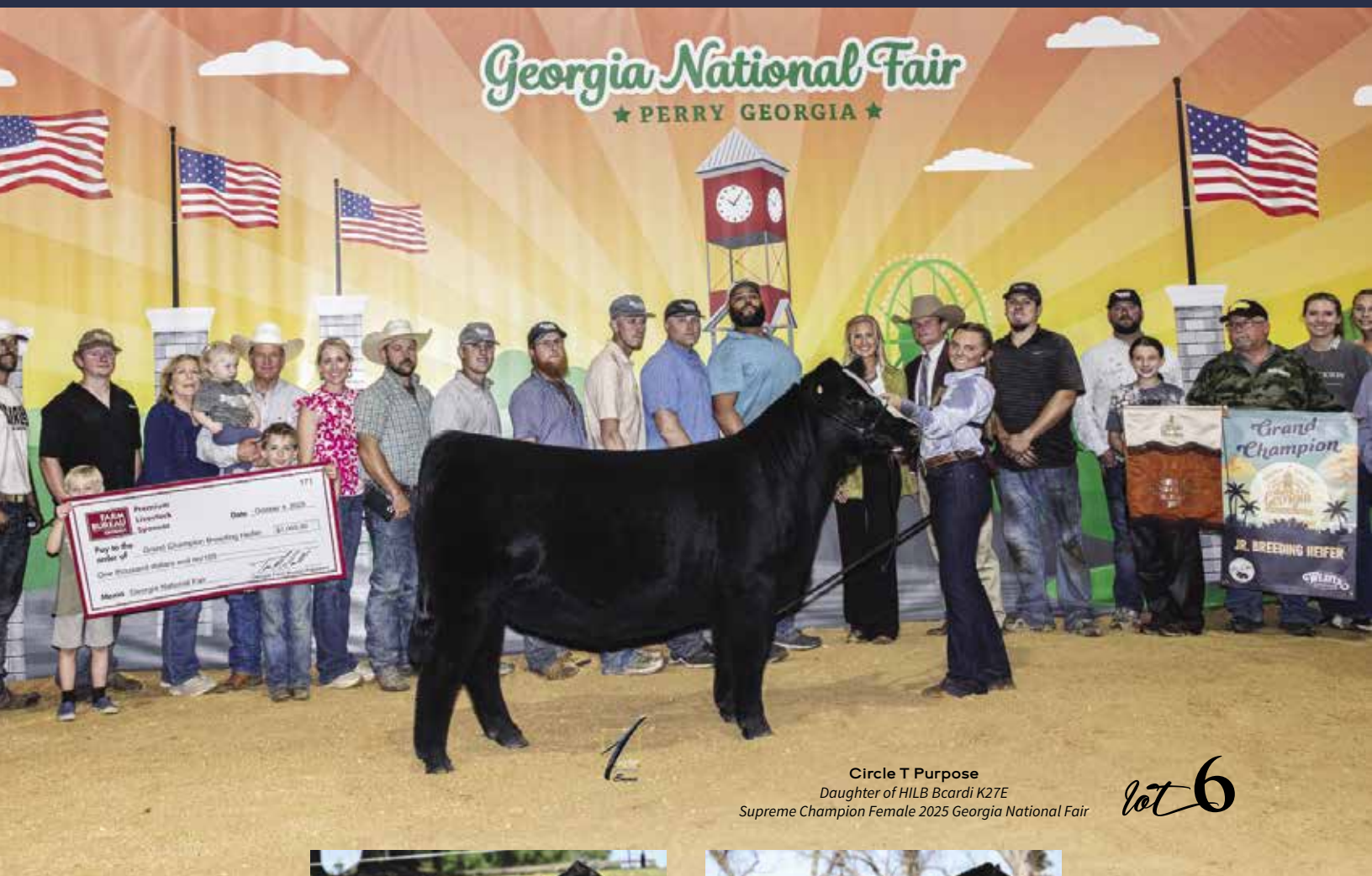
HTP SVF DEW THE STROKE

S A V BLACKBIRD 5296

CE	BW	WW	YW	MCE	Milk	MWW	Marb	REA	API
11.7	1.5	84.0	131.1	5.0	16.7	60.2	0.34	0.83	124.3

Frozen genetics

MISS BEHATI COW FAMILY



Circle T Purpose
Daughter of HILB Bcardi K27E
Supreme Champion Female 2025 Georgia National Fair

lot 6



Mr CCF Saddle Up
Sire of Lot 6A



FRKG Marvel
Sire of Lot 6B

lot 6 HILB BCARDI K27E

DOB: 3/31/22 | ASA#: 4115962 | Tattoo: K27E | 3/4 SM 1/4 AN

SILVEIRAS STYLE 9303

LLSF UPRISING Z925

sire **HARKERS UNLEASHED**
HILB MISS OO LA LA B412

X

dam **HILB MISS BEHATI D016S**
SS BABYS BREATH P035

CE	BW	WW	YW	MCE	Milk	MWW	Marb	REA	API
7.1	5.0	82.7	126.6	3.0	18.3	59.6	0.24	0.63	101.6

Selling one IVF cycle. Our newest donor in the lineup here for C&C & Circle T and she jumped in with a splash! HILB BCARDI caught our eye as an open heifer at Hilbrands and we knew we had to have her. Her first natural calf, sired by Mr CCF Saddle Up, who you will be hearing more about in the future, claimed the SUPREME CHAMPION FEMALE honors at the 2025 GA National Fair, for Halley and the Elrod family! She was a past sale highlight and has been a dominant force in the showing here in Georgia. K27E is already proving to be an important asset in our donor program. Get in early on this young exciting donor.

lot 6A MR CCF SADDLE UP X HILB BCARDI K27E

Three Purebred Simmental Embryos

Planned Mating Projected EPDs

CE	BW	WW	YW	MCE	Milk	MWW	Marb	REA	API
7.8	4.4	80.7	122.5	2.6	16.1	56.4	0.13	0.83	106.8

Selling 3 IVF non-sexed embryos guaranteeing one pregnancy if implanted by a certified embryologist.

lot 6B FRKG MARVEL 271M X HILB BCARDI K27E

Three Purebred Simmental Embryos

Planned Mating Projected EPDs

CE	BW	WW	YW	MCE	Milk	MWW	Marb	REA	API
10.2	4.1	80.2	122.1	4.2	18.6	58.7	0.14	0.72	109.2

Selling 3 IVF non-sexed embryos guaranteeing one pregnancy if implanted by a certified embryologist.

frozen genetics

SHEZA WRECK COW FAMILY



lot 7



Miss CCF Sheza Babe U2
Maternal Granddam of KANE'S Sheza Wreck 39L



KANE'S Sheza Wreck 39L
Dam of Lot 7 • National Champion Purebred Pair

39L burst onto the scene at Junior Nationals in Madison this summer where she earned Champion Owned as well as Bred & Owned Cow Calf Pair with her son at side by Double Up. 39L was commended at the show for being the right size and proportions to produce at a high level across the nation. This female stands on a big well designed hoof, her udder design is next level, and her length of body is second to none she's truly the kind cattlemen of all classes dream of producing pastures full of. We acquired 1/2 interest in this female from Kane Cattle at this year's Next Generation Foundation Female Sale, that day her first calf was sold for \$15,000 to Harwood Cattle of Montana. This female comes as no accident as she is backed by one of our all time top cow families, the famed CCF Sheza Babe. Here's your opportunity to tie into a female we are looking to utilize at a high level in the coming years. 39L has been flushed twice to date and is currently averaging 15 frozen reverse sorted embryos per flush.

lot 7A KANE'S SHEZA WRECK 39L

DOB: 4/7/23 | ASA#: 4276520 | Tattoo: 39L | PB SM

W/C RELENTLESS 32C

RUBYS TURNPIKE 771E

sire **RECKONING 711F**
RWA KRISHA-ET

X

dam **SLTR SHEZA BABE 039H**
MISS CCF SHEZA BABE U2

CE	BW	WW	YW	MCE	Milk	MWW	Marb	REA	API
7.9	2.4	68.8	91.9	3.0	18.2	52.6	-0.06	0.94	102.7

Selling one IVF cycle.

lot 7B FRKG MARVEL 271M X KANE'S SHEZA WRECK 39L

Three Purebred Simmental Embryos

Planned Mating Projected EPDs

CE	BW	WW	YW	MCE	Milk	MWW	Marb	REA	API
10.6	2.8	73.2	104.8	4.2	18.6	55.2	-0.02	0.87	103.4

Selling 3 IVF sexed female embryos guaranteeing one pregnancy if implanted by a certified embryologist.

open heifer JESTRESS COW FAMILY



S&C

lot 8



Miss CCF Passion
Dam of Lot 8



SO Remedy 7F
Sire of Lot 8



Miss CCF Beauty
\$22,000 Full Sib to Lot 8

lot 8

MISS CCF COMPASSION

DOB: 4/14/25 | ASA#: 4586660 | Tattoo: N84 | PB SM

HPF/HILL UPRISING C104

LLSF PAYS TO BELIEVE ZU194

sire **SO REMEDY 7F**
B&K CREAM SODA 8D

X

dam **MISS CCF PASSION**
MISS CCF JESTRESS B79

CE	BW	WW	YW	MCE	Milk	MWW	Marb	REA	API
11.5	3.3	83.1	126.2	5.2	22.0	63.5	-0.11	0.90	105.1

A Remedy daughter with the look, style and structure of her dam and past Clear Vision high seller Miss CCF Passion. Passion commanded 25,000 half interest and has since become a cornerstone donor for making purebred and percentage cattle. Also, a full sister, Miss CCF Beauty, was a high seller in our 2024 Fall Production Sale. Compassion represents what this family line has passed along for generations, beautiful profile, maternal look, and longevity. This purebred female backed by the famed Jestress 9015 family line is one to have marked in your book sale day!

open heifer JESTRESS COW FAMILY



S&C

lot 9



Miss CCF Double D D101
Dam of Lots 9 and 10



\$15,500 Maternal Sib to Lots 9 and 10



\$15,000 Maternal Sib to Lots 9 and 10

From the day this one was born we thought she was special. Loretta hit the ground running and hasn't slowed down. It's no secret that the Double D donor has been a fan favorite around the farm and for the customers who have consumed her progeny over the years. There's honestly not another word to describe her other than consistent. When this one stepped into the picture pen, you couldn't help but get excited. Generally, in the barn she is one of the most laid-back animals, but she knew what the mission was, and boy did she exceed it! This Pays To Believe daughter has the bone, foot size, center rib and the look to run on any level.

lot 9 SCSF LORETTA N230

DOB: 5/10/25 | ASA#: 4583706 | Tattoo: N230 | 3/4 SM 1/4 AN

CNS PAYS TO DREAM T759

FBF1/SF IGNITION

Sire **LLSF PAYS TO BELIEVE ZU194** X Dam **MISS CCF DOUBLE D D101**
LLSF URABABYDOLL U194 JAS JESTRESS 9015

CE	BW	WW	YW	MCE	Milk	MWW	Marb	REA	API
11.4	1.5	71.1	103.5	5.8	19.0	54.5	0.14	0.62	125.4

open heifer JESTRESS COW FAMILY



lot 10

S&C



\$6,700 Maternal Sib to Lots 9 and 10



\$9,000 Maternal Sib to Lots 9 and 10

lot 10 SCSF DONNA N208

DOB: 2/9/25 | ASA#: 4581879 | Tattoo: N208 | 3/4 SM 1/4 AN

MR CCF 20-20

FBF1/SF IGNITION

Sire **VCL FORESIGHT**
HCC0 COUNTESS 412D

X

Don **MISS CCF DOUBLE D D101**
JAS JESTRESS 9015

CE	BW	WW	YW	MCE	Milk	MWW	Marb	REA	API
10.5	2.0	74.5	103.2	3.8	19.4	56.6	0.08	0.65	120.2

Another descendant of the Jestress cow family. Study Donna and her overall build. The Foresight progeny are giving that extra look but still have some added broodiness, and structure that will last for years to come. This Double D daughter is green but has a very bright future. Not to mention she's one breeding away from making a purebred!

frozen genetics

JESTRESS B79 COW FAMILY



Holly Alford

lot 11



Reckoning 711F
Sire of Lot 11A



W/C Executive Order 8543B
Sire of Lot 11B



STCC Tecumseh 058J
Sire of Lot 11C

There has never been a better time to purchase embryos from the Jestress B79 donor affectionately known as "Diddo". The amount of excitement that this female has obtained over the last 10 years has been nothing short of astonishing. B79 claimed her share of banners, but what her progeny has achieved over the last decade is what is truly impressive. Champions have been named on all national levels, the most recent claiming the champion percentage female title at the 2025 National Western Jr. Show. Herd sires are working in multiple operations across the county and donors are leading their respective programs. The matings that are being offered here in this sale are all tried and proven, and here is your opportunity to dive into genetics out of the famed "Diddo" donor.

lot 11A RECKONING 711F - MISS CCF JESTRESS B79

Three 5/8 SM 3/8 AN Embryos

Planned Mating Projected EPDs

CE	BW	WW	YW	MCE	Milk	MWW	Marb	REA	API
8.7	2.7	73.5	103.9	4.1	17.2	54.0	0.04	0.78	103.9

Selling 3 conventional embryos guaranteeing one pregnancy if implanted by a certified embryologist.

lot 11B W/C EXECUTIVE ORDER 8543B X MISS CCF JESTRESS B79

Three 5/8 SM 3/8 AN Embryos

Planned Mating Projected EPDs

CE	BW	WW	YW	MCE	Milk	MWW	Marb	REA	API
12.6	0.1	78.4	120.5	5.2	19.3	58.4	0.03	0.85	116.1

Selling 3 conventional embryos guaranteeing one pregnancy if implanted by a certified embryologist.

lot 11C STCC TECUMSEH 058J X MISS CCF JESTRESS B79

Three 3/4 SM 1/4 AN Embryos

Planned Mating Projected EPDs

CE	BW	WW	YW	MCE	Milk	MWW	Marb	REA	API
8.4	3.5	80.5	116.9	3.2	19.5	59.7	0.11	0.93	113.9

Selling 3 conventional embryos guaranteeing one pregnancy if implanted by a certified embryologist.

open heifers JESTRESS B79 COW FAMILY

lot 12 MISS CCF JESTRESS N52

DOB: 4/12/25 | ASA#: 4594188 | Tattoo: N52 | 3/4 SM 1/4 AN

HPF/HILL UPRISING C104

FBF1 COMBUSTIBLE

sire **SO REMEDY 7F**
B&K CREAM SODA 8D

X

dam **MISS CCF JESTRESS B79**
JAS JESTRESS 9015

CE	BW	WW	YW	MCE	Milk	MWW	Marb	REA	API
12.9	1.9	77.9	121.1	5.5	19.7	58.6	-0.16	0.85	102.1

The long-awaited Remedy x Jestress B79 heifer and she was worth the wait. Jestress B79 had done it all. She claimed multiple champion titles as a show heifer but more importantly she is still a cornerstone donor at 10 years of age. Producing champions, herd sires working and across the nation and breed enhancing donors that are killing it in their respective programs. Jestress N52 has the potential to follow in her siblings footsteps and continue the legacy of excellence. Beautiful in her skeletal build, eye catching from the side with all the grow to keep getting better.



lot 13 MISS CCF MARTINA N710

DOB: 3/10/25 | ASA#: 4582156 | Tattoo: N710 | 5/8 SM 3/8 AN

W/C RELENTLESS 32C

FBF1 COMBUSTIBLE

sire **RECKONING 711F**
RWA KRISHA-ET

X

dam **MISS CCF JESTRESS B79**
JAS JESTRESS 9015

CE	BW	WW	YW	MCE	Milk	MWW	Marb	REA	API
8.7	2.7	73.5	103.9	4.1	17.1	53.9	0.03	0.77	112.5

Jestress B79 progeny are a tried and proven family line here at C&C farms and this Reckoning daughter is no exception. She catches your eye with her attractive front one third and sleek look from the side but when you study her on the move is when she steals the show. Martina steps off with a big foot and has the flex to her joints and pastern that the Jestress family is known for. All combined with a genetic background that have claimed banners on all national levels. The most recent being her maternal sib grabbing the champion slap for Champion Percentage Female at the 2025 National Western Jr. Show!



lot 14 MISS CCF CHRISTINA

DOB: 3/8/25 | ASA#: 4594181 | Tattoo: N83 | 5/8 SM 3/8 AN

W/C RELENTLESS 32C

FBF1 COMBUSTIBLE

sire **RECKONING 711F**
RWA KRISHA-ET

X

dam **MISS CCF JESTRESS B79**
JAS JESTRESS 9015

CE	BW	WW	YW	MCE	Milk	MWW	Marb	REA	API
8.8	2.7	73.0	103.1	4.3	16.4	52.9	0.04	0.77	103.3

Year after year the lineup of Jestress B79 progeny in the sale continue to impress. This Reckoning daughter is the definition of sound and good footed. We feel this one exemplifies what it means to be fancy and broody in one package. Her full and maternal sisters have been high sellers, champions on all levels, and now are working for their respective programs. At the end of the day, her type are the ones that make it in the real world.



Frozen genetics

JESTRESS H301 COW FAMILY



lot 15



FRKG Marvel 271M
Sire of Lot 15A



Next Level
Sire of Lot 15B • Full Sibs to Embryos Sell as Lots 17-20



STCC Tecumseh 058J
Sire of Lot 15C • Full Sib to Embryos Sells as Lot 16

One of the most impressive show heifers, and now donor to come out of the matriarch Jestress B79, and we will just say this, H301 is paving her own way in the donor pen. One of the only females to claim the Supreme Champion Breeding Female titles at the GA National Fair, and the GA National Livestock show. Her popularity has only grown stronger stepping into the donor pen. Study the progeny in this sale. H301 is just getting started and now is the time to get in on these proven genetics!

lot 15A FRKG MARVEL 271M X MISS CCF JESTRESS H301

Three 3/4 SM 1/4 AN Embryos

Planned Mating Projected EPDs

CE	BW	WW	YW	MCE	Milk	MWW	Marb	REA	API
12.1	3.2	80.4	122.0	5.1	15.1	55.2	-0.08	0.80	94.8

Selling 3 conventional embryos guaranteeing one pregnancy if implanted by a certified embryologist.

lot 15B NEXT LEVEL X MISS CCF JESTRESS H301

Three 3/4 SM 1/4 AN Embryos

Planned Mating Projected EPDs

CE	BW	WW	YW	MCE	Milk	MWW	Marb	REA	API
10.0	3.9	84.4	126.2	4.5	16.2	58.3	-0.15	1.01	98.8

Selling 3 conventional embryos guaranteeing one pregnancy if implanted by a certified embryologist.

lot 15C STCC TECUMSEH 058J X MISS CCF JESTRESS H301

Three 3/4 SM 1/4 AN Embryos

Planned Mating Projected EPDs

CE	BW	WW	YW	MCE	Milk	MWW	Marb	REA	API
8.2	3.9	83.6	120.9	3.1	16.2	57.9	0.07	0.92	107.7

Selling 3 conventional embryos guaranteeing one pregnancy if implanted by a certified embryologist.

open heifers
JESTRESS H301 COW FAMILY



Full Sib to the Dam of Lots 16-20
Reserve Champion Percentage Female 2021 American Royal



Full Sib to the Dam of Lots 16-20
Champion Percentage Female 2025 NWSS Jr. Show

lot 16
MISS CCF WHY NOT ME

DOB: 2/11/25 | ASA#: 4594185 | Tattoo: N624 | 3/4 SM 1/4 AN

VCL FORESIGHT
sire **STCC TECUMSEH 058J** X dam **MISS CCF JESTRESS H301**
HF SERENA MISS CCF JESTRESS B79

CE	BW	WW	YW	MCE	Milk	MWW	Marb	REA	API
8.1	3.8	83.1	120.8	3.0	15.7	57.1	0.07	0.92	107.6

The Tecumseh daughter of the sisters out of H301 donor. This one grabs our attention every time we walk in the pen. So big bellied and super sound. The amount of bone and foot size she stands on is incredible. If you're in the market for one with that show look, and added cow power, this one's your girl.

open heifers

JESTRESS H301 COW FAMILY



Miss CCF Jestress H301
Dam of Lots 17-20
Supreme Champion Female 2021 Georgia National Fair



Full Sib to the Dam of Lots 16-20
5th Overall Percentage Female 2024 Simmental Jr. Nationals

lot 17 SCSF ROBIN N201

DOB: 2/10/25 | ASA#: 4581881 | Tattoo: N201 | 3/4 SM 1/4 AN

KRJ DAKOTA OUTLAW G974

WLE COPACETIC E02

sire **NEXT LEVEL**

X

dam

MISS CCF JESTRESS H301

KRDL CAEDENCE C37

MISS CCF JESTRESS B79

CE	BW	WW	YW	MCE	Milk	MWW	Marb	REA	API
9.9	3.8	84.4	126.1	4.4	16.2	58.3	-0.15	1.01	101.0

Robin is a daughter of the Jestress H301 "Bertha" donor who claimed Supreme Champion Breeding Female at the 2021 GA National Fair and the 2022 GA National Livestock Show. Arguably one of the most decorated show heifers to walk through GA in sometime. From a decorated show heifer to a featured donor here at C&C it is pretty obvious with the sale offering that her progeny are getting the job done. Robin blends style, presence, structure and a big center rib into one package.

lot 18 MISS CCF CRYSTAL

DOB: 2/8/25 | ASA#: 4594182 | Tattoo: N706 | 3/4 SM 1/4 AN

KRJ DAKOTA OUTLAW G974

WLE COPACETIC E02

sire **NEXT LEVEL**

X

dam

MISS CCF JESTRESS H301

KRDL CAEDENCE C37

MISS CCF JESTRESS B79

CE	BW	WW	YW	MCE	Milk	MWW	Marb	REA	API
9.7	3.9	85.4	127.7	4.2	16.3	58.9	-0.15	1.01	99.2

We have never shied away from a painted up one and we are not about to start now. You talk about one that has the pieces to be big time good with a banner winning pedigree to boot! Crystal sets down on a good foundation at the ground with the silhouette to match. It's easy to like good ones, but more importantly, genetic family lines matter and the Jestress tribe has proven that it can do it all!

open heifers

JESTRESS H301 COW FAMILY



Miss CCF Jestress H301
Dam of Lots 17-20
Supreme Champion Female 2022 Georgia National Livestock Show



Full Sib to the Dam of Lots 16-20
Reserve Champion Percentage Female 2022 OKC



lot 19 MISS CCF SUSAN

DOB: 1/14/25 | ASA#: 4594183 | Tattoo: N708 | 3/4 SM 1/4 AN

KRJ DAKOTA OUTLAW G974

WLE COPACETIC E02

sire **NEXT LEVEL**

X

dam

MISS CCF JESTRESS H301

KRDL CAEDENCE C37

MISS CCF JESTRESS B79

CE	BW	WW	YW	MCE	Milk	MWW	Marb	REA	API
9.7	3.9	85.4	127.7	4.2	16.3	58.9	-0.15	1.01	99.2

The next level daughters are taking the industry by storm, and this blaze face beauty is top notch! The pure power and substance of this female is next to none along with a beautiful front one third and a strong foundation at the ground. Her dam, Miss CCF Jestress H301, more commonly known as "Bertha" dominated the state of Georgia and this female has the same size, skeletal build, and running gears to follow in her mother's footsteps.

lot 20 MISS CCF BECKY

DOB: 1/12/25 | ASA#: 4594184 | Tattoo: N82 | 3/4 SM 1/4 AN

KRJ DAKOTA OUTLAW G974

WLE COPACETIC E02

sire **NEXT LEVEL**

X

dam

MISS CCF JESTRESS H301

KRDL CAEDENCE C37

MISS CCF JESTRESS B79

CE	BW	WW	YW	MCE	Milk	MWW	Marb	REA	API
9.7	3.9	85.4	127.7	4.2	16.3	58.9	-0.15	1.01	99.2

The structural build that the H301 daughters have in this sale is second to none. Just study the pieces that Becky puts together. She's long and extended from every angle as you can make one, and the added sweeping center rib and attractive head and neck. Becky might have a little extra chrome, but we think with her build and unique pieces she could do big things.

open heifers ALLEY COW FAMILY



lot 21 CIRCLE T ALLEY N802

DOB: 2/12/25 | ASA#: 4597873 | Tattoo: N802 | PB SM

KRJ DAKOTA OUTLAW G974

MR CCF 20-20

Sire **NEXT LEVEL**

X

Dam **TYLETOWN**

KRDL CAEDENCE C37

HPF/B&K/AF ALLEY 355C

CE	BW	WW	YW	MCE	Milk	MWW	Marb	REA	API
8.8	4.1	87.7	121.9	4.0	17.8	61.5	-0.03	1.20	109.5

This stunning red baldy is sure to be head turner on sale day. Backed by the famed Alley family, and the proven and profitable MR CCF 20-20 on the bottom side and the popular Next Level sire on the top side of her pedigree. Her dam, Tyletown S7F has proven to be one of the best kept secrets at Circle T Farms. Time and time again she has proven that her progeny rise to the top of each calf crop and this red diva sure didn't disappoint. Stoutness, power, performance, and ties all this together with a feminine look that is undeniable.



\$11,000 Maternal Sib to Lot 21

frozen genetics + open heifers

BLACK SATIN COW FAMILY

lot 22A NEXT LEVEL X CLAC BLACK SATIN 179G

Three Purebred Simmental Embryos

Planned Mating Projected EPDs

CE	BW	WW	YW	MCE	Milk	MWW	Marb	REA	API
8.5	4.4	85.2	128.4	4.5	22.0	64.5	-0.06	1.21	108.5

It's a great time to jump into the famed Black Satin genetics. The consistency and quality that the 179G cornerstone donor for Circle T Farms and the Drach family produces is second to none. A full sib to the popular "BOOTS" donor. Genetics that continue to crank out the goods! **Selling 3 IVF non-sexed embryos guaranteeing one pregnancy if implanted by a certified embryologist.**

lot 22B FRKG MARVEL 271M X CLAC BLACK SATIN 179G

Three Purebred Simmental Embryos

Planned Mating Projected EPDs

CE	BW	WW	YW	MCE	Milk	MWW	Marb	REA	API
10.6	3.7	81.1	124.2	5.1	20.9	61.4	0.01	1.00	107.4

Selling 3 IVF non-sexed embryos guaranteeing one pregnancy if implanted by a certified embryologist.



CLAC Black Satin 179G
Donor Dam of Lot 22

lot 23 NXT/CIRCLE T SYMPHONY

DOB: 2/6/25 | ASA#: 4595201 | Tattoo: N815 | PB SM

KRJ DAKOTA OUTLAW G974

LLSF PAYS TO BELIEVE ZU194

sire **NEXT LEVEL**

X

dam **CLAC BLACK SATIN 179G**

KRDL CAEDENCE C37

JS BLACK SATIN 9B

CE	BW	WW	YW	MCE	Milk	MWW	Marb	REA	API
8.4	4.3	85.1	128.2	4.5	22.8	65.2	-0.06	1.18	108.3

Not only does this one have a pedigree for the times but she looks as well! Out of the Black Satin donor, a full sib to the "Boots" out of one of the most popular Simmental bulls Next Level. It's easy to find this one in the sale group. There are not many holes you can pick in this female. Awesome in her skeletal build, with a great turn to her rib. Her feet and legs are phenomenal! Promising future with a proven pedigree. She didn't want to show off on picture day but wait until you see her video.



lot 24 NXT/CIRCLE T ERICA

DOB: 5/8/25 | ASA#: 4595202 | Tattoo: N816 | PB SM

VCL FORESIGHT

LLSF PAYS TO BELIEVE ZU194

sire **STCC TECUMSEH 058J**

X

dam **CLAC BLACK SATIN 179G**

HF SERENA

JS BLACK SATIN 9B

CE	BW	WW	YW	MCE	Milk	MWW	Marb	REA	API
6.6	4.3	84.4	123.3	3.1	22.9	64.9	0.16	1.08	117.1

Black Satin continues to intrigue us with the amount of power and substance she contributes to her progeny while they still maintain the right amount of look to catch your eye. This daughter of the popular Tecumseh sire is built for the long haul. She is one that reads good at all angles. Good in her hind leg structure, pin set, depth of rib with an overall balanced look.



open heifers SUGAR AND SPICE COW FAMILY



Miss CCF Allspice
\$22,000 Maternal Sib to Lot 25



Miss CCF Salt & Pepper
\$10,000 Maternal Sib to Lot 26



lot 25 MISS CCF ROSEMARY

DOB: 5/15/25 | ASA#: 4594193 | Tattoo: N129 | 3/4 SM 1/4 AN

KRJ DAKOTA OUTLAW G974

FBF1 COMBUSTIBLE

sire **NEXT LEVEL**

X

dam

KRDL CAEDENCE C37

MISS CCF SUGAR AND SPICE
JAS JESTRESS 9015

CE	BW	WW	YW	MCE	Milk	MWW	Marb	REA	API
10.2	2.8	81.4	122.1	4.2	19.8	60.4	-0.16	0.95	105.1

The Sugar and Spice donor continues to put out the goods. Rosemary brings the added look, style, structure, and adds a sweeping center rib to the equation. All this Next Level daughter needs is a little time on feed. Backed by some of the most long-lasting genetics here at C&C.

lot 26 MISS CCF KISSES

DOB: 3/2/25 | ASA#: 4594187 | Tattoo: N709 | 3/4 SM 1/4 AN

MR CCF THE DUKE

FBF1 COMBUSTIBLE

sire **MR CCF SADDLE UP**

X

dam

R/F UP THE LIMIT H214

MISS CCF SUGAR AND SPICE
JAS JESTRESS 9015

CE	BW	WW	YW	MCE	Milk	MWW	Marb	REA	API
10.1	2.4	76.5	116.4	3.4	15.4	53.5	-0.09	0.84	100.8

This bald-faced beauty is a real head turner! Miss CCF Kisses is the spitting image of her mother Miss CCF sugar and spice who commanded 20,000 for half interest in a past Clear Vision sale while her first natural calf commanded 10,000 that fall. Miss CCF Allspice, a maternal sib to Kisses, sold for 22,000 that following year. This Saddle Up daughter gives you the brood cow appearance while still having a beautiful front own third and a set of wheels that can last a lifetime.

open heifers GEORGINA COW FAMILY



Mr CCF Saddle Up
Sire of Lot 27



SCSF Georgina G34
Dam of Lots 27 and 28



lot 27 SCSF SALLY N234

DOB: 6/12/25 | ASA#: 4581880 | Tattoo: N234 | 1/2 SM 1/2 AN

MR CCF THE DUKE

SILVEIRAS STYLE 9303

sire **MR CCF SADDLE UP**
R/F UP THE LIMIT H214

dam **SCSF GEORGINA G34**
CHAMPION HILL GEORGINA 6518

CE	BW	WW	YW	MCE	Milk	MWW	Marb	REA	API
11.5	1.8	70.9	110.0	5.4	16.6	52.7	0.29	0.63	113.0

Sally is the youngest in the sale but when it comes to quality and potential to do big things she rises to the top. This June Mr CCF Saddle Up daughter is a great representation of what the young herd sire is producing. Sound, big centered, and gorgeous from the side. We think she could be competitive in the summer division.

lot 28 SCSF GEORGINA

DOB: 4/16/25 | AAA#: Pending | Tattoo: N240 | PB AN

PVF INSIGHT 0129

SILVEIRAS STYLE 9303

sire **PVF BLACKLIST 7077**
PVF BACKBIRD 3070

dam **SCSF GEORGINA G34**
CHAMPION HILL GEORGINA 6518

CE	BW	WW	YW	MCE	Milk	MWW	Marb	REA	API

The loan Angus show prospect in the sale. There are few Angus donors running around the farm. But with the job that Georgina G34 is doing, and the high-quality progeny that she is producing, she has claimed a spot in the donor pen. The Blacklist mating to this Style daughter produced an 8,000 heifer in our 2024 Spring Production Sale, and this one has the same quality and structure in a bigger package.

frozen genetics TIME TO SHINE COW FAMILY



Darla @ Linde's

lot 29

lot 29

CMFM TIME TO SHINE 031B EMBRYOS

Three Purebred Simmental Embryos

SO REMEDY 7F

sire **FRKG MARVEL 271M**
HCC0 COUNTESS 174F

X

SVF STEEL FORCE S701

dam **CMFM TIME TO SHINE 031B**
MISS TIME TO SHINE Y251

Planned Mating Projected EPDs

CE	BW	WW	YW	MCE	Milk	MWW	Marb	REA	API
12.5	2.6	77.8	113.7	4.2	16.5	55.3	-0.03	0.92	103.6

The Time To Shine family line has always been known for producing females that have a great impact on the Simmental breed. The consistency of these genetics over the years have produced champions, donors, herd sires that are working in some of the most influential businesses around the nation. The mating to FRKG Marvel could be the best yet out of the 031B matriarch. **Selling 3 IVF non-sexed embryos guaranteeing one pregnancy if implanted by a certified embryologist.**

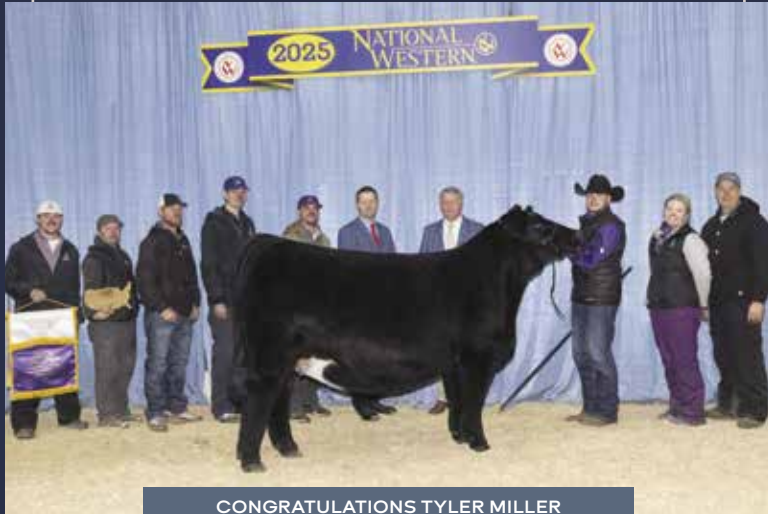


FRKG Marvel
Sire of Lot 29

congratulations CUSTOMER SUCCESS

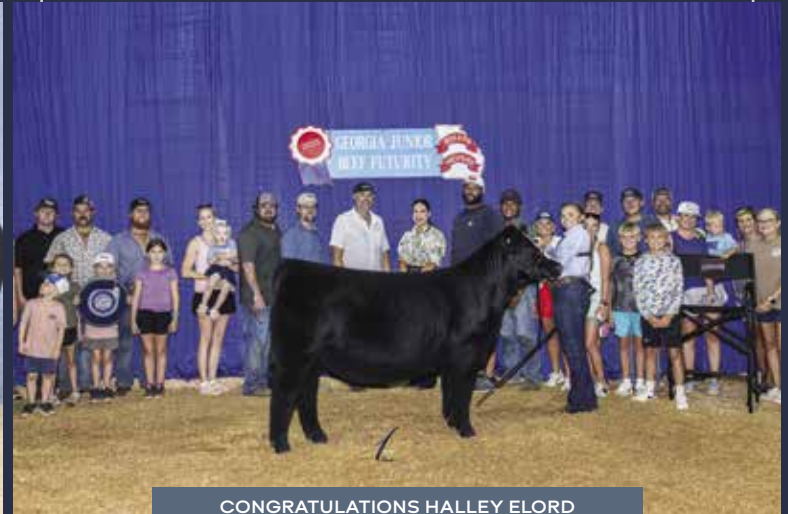
CONGRATULATIONS HALLEY ELORD

Supreme Champion Female
2025 Georgia National Fair



CONGRATULATIONS TYLER MILLER

Champion Percentage Female
2025 NWSS Junior Show



CONGRATULATIONS HALLEY ELORD

Supreme Champion Female
2025 Georgia Junior Beef Futurity



CONGRATULATIONS KOLT HARPER

Reserve Champion Red Angus Female
2025 GA National Livestock Show



CONGRATULATIONS CLAYTON SELLERS

Champion % and 4th Overall Female
2025 GA National Livestock Show
Her mother was a past Clear Vision High Seller!



CONGRATULATIONS KY ALFORD

Reserve Champion Simmental Female
2025 GA National Livestock Show

Bred heifers + pairs BLACKBIRD COW FAMILY



lot 30 & 30A T-T BLACKBIRD J207

DOB: 11/4/21 | ASA#: 4335123 | Tattoo: J207 | 3/4 SM 1/4 AN

W/C LOADED UP 1119Y
sire **W/C BANKROLL 811D**
MISS WERNING KP 8543U

X

SS/PRS HIGH VOLTAGE 244X
dam **FBF1 BLACKBIRD**
CHAMPION HILL BLACKBIRD 8003

CE	BW	WW	YW	MCE	Milk	MWW	Marb	REA	API
11.0	1.2	78.6	116.0	5.4	19.3	59.3	0.19	0.82	106.9

The mother of L207 and granddam of N07, which will both be highlights in this year's offering! J207 is the type of cow that doesn't miss and should be utilized to build off of. The cow families run deep with her dam being FBF1 Blackbird who is a direct daughter of the great Champion Hill Blackbird 8003. J207 has a stout bull calf at side and a beautiful udder. **AI'd to FRKG Marvel 271M before sale day. Bull calf (ASA# 4594786) born 9/22/25 by ANBC/T-T Noble L16.**



FBF1 Blackbird
Dam of Lot 30



Champion Hill Blackbird 8003
Granddam of Lot 30

Bred Heifers + Pairs BLACKBIRD COW FAMILY



lot 31

lot 31

T-T BLACKBIRD L207

DOB: 3/5/23 | ASA#: 4335124 | Tattoo: L207 | 3/4 SM 1/4 AN

W/C EXECUTIVE ORDER 8543B

W/C BANKROLL 811D

sire **W/C DOUBLE DOWN 5014E**

X

dam **T-T BLACKBIRD J207**

W/C MISS WERNING 5014C

FBF1 BLACKBIRD

CE	BW	WW	YW	MCE	Milk	MWW	Marb	REA	API
11.8	0.3	76.1	107.8	4.4	19.7	58.0	0.04	1.03	102.6

Talk about an awesome purebred female! L207 is the type we strive to raise and really shouldn't sell, but we are committed to offering our very best for sale. She is had done an amazing job with her stand out may born heifer calf and is bred back with a heifer calf in her belly! Smooth made, structurally sound and front pasture quality. Excited about her future. **P.E. to T-T/ANBC Tecumseh (sexed female), due 3/1/26.**



T-T Blackbird N07

Sells at Lot 31A

lot 31A

T-T BLACKBIRD N07

DOB: 5/18/25 | ASA#: 4594790 | Tattoo: N07 | PB SM

MR TR HAMMER 308A ET

W/C DOUBLE DOWN 5014E

sire **THOR 503C**

X

dam **T-T BLACKBIRD L207**

BF MISS CRYSTEEL TANGO

T-T BLACKBIRD J207

CE	BW	WW	YW	MCE	Milk	MWW	Marb	REA	API
12.9	0.4	78.9	110.7	4.6	20.4	59.8	-0.05	0.87	109.1

Lot 31A: We believe this May heifer calf sired by Thor 503C has all the parts to show and is backed by generations of extremely productive sires and dams on both sides of her pedigree. N07 is sweet fronted, great haired, structurally sound and possesses the belly shape we demand in the ring.

Bred Heifers + Pairs

PROVEN COW FAMILIES



lot 32

S&C



Mr CCF Vision
Sire of Lot 32



HTP SVF Dew The Stroke
Dam of Lot 32



Mr CCF 20-20
Full Sib to Lot 32

Radiance could possibly be the best female out of the now deceased Dew The Stroke N93A donor. A powerful Mr CCF Vision daughter that has the extra body shape, and dimension. This is a hard one to part with. Not to mention she is a full sib to Mr. CCF 20-20. But we are bringing our best to the sale and she is certainly in the top tier. The excitement rises even higher when you see the heifer calf sired by Mr CCF Saddle Up at side, she is something special. Get in while the getting is good. Genetically built on both top and bottom to make a unique creature. **AI'd to FRKG Marvel 271M before sale day. Black heifer calf born 9/15/25 by Mr CCF Saddle Up.**

lot 32 & 32A

MISS CCF RADIANCE

DOB: 2/8/20 | ASA#: 3761677 | Tattoo: H56 | PB SM

MR NLC UPGRADE U8676

WLE POWER STROKE

sire **MR CCF VISION**
GCF MISS ELSA

X dam **HTP SVF DEW THE STROKE**
HTP SVF HONEYDEW

CE	BW	WW	YW	MCE	Milk	MWW	Marb	REA	API
12.3	1.9	77.7	111.4	4.2	16.1	54.9	-0.08	1.02	110.2

Bred Heifers + Pairs PROVEN COW FAMILIES



lot 33 & 33A CLRWTR EVELYN K76B

DOB: 9/13/22 | ASA#: 4217982 | Tattoo: K76B | PB SM

PROFIT

sire **UDE PROFIT 67F**
TJSC KANSA 823B

X

W/C EXECUTIVE ORDER 8543B

dam **BLC1 EVELYN 476E**
WAGR MELODY 5076C

CE	BW	WW	YW	MCE	Milk	MWW	Marb	REA	API
9.5	2.4	75.9	104.7	4.3	19.2	57.1	0.17	0.60	120.2

Talk about a beautiful red cow/calf pair. When you stop and study this female you can't help but appreciate her impeccable structure at the ground and her beautiful front one third. She has the broody cow power that all cattlemen love to see and the Red Bird bull calf on her side is just the beginning to what this female can produce! **AI'd to FRKG Marvel 271M before sale day. Red bull calf born 9/20/25 by W/C Red Bird.**

bred heifers + pairs PROVEN COW FAMILIES



lot 34

lot 34 & 34A TNM JADE 105J

DOB: 3/6/21 | ASA#: 3896777 | Tattoo: 105J | PB SM

WS PILGRIM H182U

CCR COWBOY CUT 5048Z

sire **PROFIT**



CCR MS 7355 COWBOY 5097C

WAGR PANARAMA 204Z

CCR MS NEWSLINE 7355T

CE	BW	WW	YW	MCE	Milk	MWW	Marb	REA	API
9.6	3.3	79.5	110.3	5.6	17.4	57.1	0.17	0.50	128.4

A direct daughter of the \$400,000 Profit that ties together two sides of the industry both phenotypically and genetically. 105J was a previous sale highlight in this very sale for the Metzger Family and had a very successful show career for Emily Bruns in Missouri. However, she was built to be in the donor pen with her huge feet, big bone, great rib shape and flawless structure. 105J has an outstanding udder with a heifer calf at side with a ton of upside! Great cows with a pedigree like this are hard to find. **AI'd to FRKG Marvel 271M before sale day. Heifer calf (ASA# 4594788) born 9/14/25 by ANBC/T-T Noble L16.**



Profit
Sire of Lot 34

Bred Heifers + Pairs

PROVEN COW FAMILIES



T-T Blackbird E51
Dam of Lot 35



HBE G-Money
Full Brother to Lot 35



Maternal Sister to Lot 35
12th Overall B&O Female 2023 Simmental Jr. Nationals

lot 35 & 35A HBE/T-T MISS K53

DOB: 4/25/22 | ASA#: 4594810 | Tattoo: K53 | 3/4 SM 1/4 AN

W/C LOADED UP 1119Y

MR CCF 20-20

give **W/C BANKROLL 811D**
MISS WERNING KP 8543U

X

from **T-T BLACKBIRD E51**
CHAMPION HILL BLACKBIRD 8003

CE	BW	WW	YW	MCE	Milk	MWW	Marb	REA	API
12.3	1.4	80.6	119.7	6.0	18.5	59.5	0.20	1.00	123.1

This young female is out of one of the best percentage females we have raised, T-T Blackbird E51 that is all selling as a feature donor lot in the sale! K53 is huge middle, jack fronted, great uttered female with a really nice heifer calf at side. Her dam has done great things for this program and HBE Simmentals and I no doubt K53 can do the same for her next owner. **AI'd to FRKG Marvel 271M before sale day. Heifer calf (ASA# 4594822) born 9/7/25 by ANBC/T-T Noble L16.**

Bred Heifers + Pairs PROVEN COW FAMILIES



lot 36

S & C

lot 36 & 36A T-T BLACKBIRD J208

DOB: 2/2/21 | ASA#: 4326235 | Tattoo: J208 | 3/4 SM 1/4 AN

W/C LOADED UP 1119Y
sire **W/C BANKROLL 811D**
MISS WERNING KP 8543U

X

SS/PRS HIGH VOLTAGE 244X
dam **FBF1 BLACKBIRD**
CHAMPION HILL BLACKBIRD 8003

CE	BW	WW	YW	MCE	Milk	MWW	Marb	REA	API
11.0	1.2	78.6	116.1	5.4	19.3	59.3	0.19	0.82	110.1

Another very nice stout, long spined female with a nice young heifer calf at side. She is back by the 8003 on bottom side and W/C Bankroll on the topside. We have sold multiple full sibs to this cow over the years that showed all over the country with success. **AI'd to FRKG Marvel 271M before sale day. Heifer calf (ASA# 4594787) born 10/18/25 by ANBC/T-T Noble L16.**



FBF1 Blackbird
Dam of Lot 36



Champion Hill Blackbird 8003
Granddam of Lot 36

Bred Heifers + Pairs PROVEN COW FAMILIES



lot 37

S & C



Champion Hill Blackbird 8003
Dam of Lot 37



Maternal Sib of Lot 37
Reserve Percentage Female 2020 Ozark Empire Fair



Maternal Sib of Lot 37
Overall Supreme Heifer 2022 "Hottest Show on Earth"

lot 37 & 37A T-T BLACKBIRD K04

DOB: 5/22/22 | ASA#: 4101059 | Tattoo: K04 | 1/2 SM 1/2 AN

SFG THE JUDGE D633

S A V BRAVE 8320

Sire **T-T JUDGE H412**
MISS CCF DREAMING

CHAMPION HILL BLACKBIRD 8003
S A V BLACKBIRD 5296

CE	BW	WW	YW	MCE	Milk	MWW	Marb	REA	API
7.3	2.3	81.7	129.1	4.5	21.8	64.2	0.37	0.53	120.4

The backbone of T-T does it again. K04 is an awesome young cow with a stout bull calf at side sired by ANBC/T-T Noble that is owned with HBE Simmentals. Noble is a stand out in his own right and has an awesome set of calves on the pairs we are offering. Elegant, sound and perfect juddered are great ways to describe this young female. **AI'd to FRKG Marvel 271M before sale day. Bull calf (ASA# 4594789) born 9/8/25 by ANBC/T-T Noble L16.**

bred heifers + pairs

JESTRESS COW FAMILY



lot 38 MISS CCF SOUTHBOUND

DOB: 3/14/22 | ASA#: 4167305 | Tattoo: K340 | 3/4 SM 1/4 AN

W/C RELENTLESS 32C

gire JSUL SOMETHING ABOUT MARY 8421 X
JBSF PROUD MARY

W/C EXECUTIVE ORDER 8543B

Don MISS CCF JESTRESS F8
MISS CCF JESTRESS B79

CE	BW	WW	YW	MCE	Milk	MWW	Marb	REA	API
11.1	1.8	87.3	134.2	2.3	13.2	56.8	-0.03	0.99	115.6

This red S.A.M daughter has matured into a beautiful, bred female. Long, and extended through her hip, bold ribbed, with running gears to last her for years. Her mother is the Jestress F8 donor that was successfully campaigned by Morgan McDaniel claiming Supreme Champion Breeding Female honors at the 2019 GA National Fair, and claimed Division wins at the 2019 NAILE Jr. & Open Show. A family line bred in the winners circle. **P.E. to Mr CCF Saddle Up from 1/30/25 to 3/1/25.**



Miss CCF Jestress F8
Dam of Lot 38

Bred heifers + pairs UP THE LIMIT COW FAMILY



lot 39

S&C



R/F UP The Limit H214
Dam of Lot 39



STCC Tecumseh 058J
Sire of Lot 39



Reckoning 711F
AI Sire of Lot 39

lot 39 MISS CCF DALLAS

DOB: 3/10/24 | ASA#: 4421164 | Tattoo: M916 | PB SM

VCL FORESIGHT

WLE COPACETIC E02

sire STCC TECUMSEH 058J
HF SERENA

X

dam R/F UP THE LIMIT H214
CMFM BURN BABY

CE	BW	WW	YW	MCE	Milk	MWW	Marb	REA	API
8.3	3.5	81.3	119.0	2.7	16.5	57.0	0.19	1.02	118.3

The up the limit daughters are proving to be beautiful and productive cattle here at C&C Farms. We have started calving the first breds out of the Up The Limit donor, and keep it short and sweet, she sealed the deal in proving that she can do it all. The udders are impeccable, they have a maternal look, and they are incredible mothers. It's hard to let go of some of these breds seeing their sisters in production but we are bringing you our best. This Tecumseh daughter is as maternal and big bellied as they come with a strong structural base to back it up! Dallas will calve to the popular champion Reckoning. AI'd to Reckoning 711F on 5/11/25.

bred heifers + pairs

JESTRESS COW FAMILY



lot 40 MISS CCF PURPOSE L17

DOB: 3/7/23 | ASA#: 4178777 | Tattoo: L17 | PB SM

WLE COPACETIC E02

LLSF PAYS TO BELIEVE ZU194

sire **ROCKING P PRIVATE STOCK H010 X**
RP/MP BUILT TO LOVE A021

dam **MISS CCF PASSION**
MISS CCF JESTRESS B79

CE	BW	WW	YW	MCE	Milk	MWW	Marb	REA	API
10.7	3.5	85.5	126.9	4.8	15.0	57.7	0.19	0.75	124.6

A great opportunity to jump in on one of the first mature Miss CCF Passion females. As you look through this sale catalog you will see that Passion can do it all. The opens are fancy, the bulls are stout and rugged, and then the breds are turning into absolutely beautiful soon to be first calf heifers. This Private Stock daughter checks a lot of boxes. Great footed, easy doing, dropping a gorgeous udder, and is the front pasture kind. Get in early on the legacy of the Passion J308 donor. **P.E. to Mr CCF Saddle Up from 1/30/25 to 3/1/25.**



Miss CCF Passion
Dam of Lot 40



Rocking P Private Stock H010
Sire of Lot 40

bred heifers + pairs

JESTRESS COW FAMILY



lot 41

S&C



Miss CCF Jestress G107
Dam of Lot 41



Mr CCF 20-20
Sire of Lot 41

lot 41 SCSF NATALIE L210

DOB: 2/6/23 | ASA#: 4581883 | Tattoo: L210 | 3/4 SM 1/4 AN

MR CCF VISION

WLE COPACETIC E02

sire MR CCF 20-20

X

dam MISS CCF JESTRESS G107

HTP SVF DEW THE STROKE

MISS CCF JESTRESS B79

CE	BW	WW	YW	MCE	Milk	MWW	Marb	REA	API
12.8	2.2	86.3	125.8	4.7	10.8	53.9	-0.01	1.11	116.8

The build and fundamentals of the 20-20 progeny continue to show us why he has been a main stay sire in the industry. Natalie is a Jestress B79 "Diddo" descendent and will calve to Mr CCF Saddle Up. She is a flashy, long spined female that we wished we had several of just like her. **P.E. to Mr CCF Saddle Up from 3/2/25 to 5/12/25.**

bred heifers + pairs

JESTRESS COW FAMILY



lot 42 MISS CCF JESTRESS L392

DOB: 2/2/23 | ASA#: 4594192 | Tattoo: L392 | 5/8 SM 3/8 AN

W/C RELENTLESS 32C

sire **RECKONING 711F**
RWA KRISHA-ET

X

FBF1 COMBUSTIBLE

dam **MISS CCF JESTRESS B79**
JAS JESTRESS 9015

CE	BW	WW	YW	MCE	Milk	MWW	Marb	REA	API
8.8	2.7	73.0	103.1	4.3	16.4	52.9	0.04	0.77	103.3

The progeny of the Jestress B79 matriarch have been high sellers, banning grabbing females and top herd sires for last 8 years. Donors are making their marks across the country out of the time proven female. This Reckoning daughter continues the legacy of being sow-belled, geeky necked, feminine headed and just the right kind fundamentally. Correct in her foot and toe shape. Generations of genetics that are the money-making kind. **P.E. to Mr CCF Saddle Up from 1/30/25 to 3/1/25.**



Miss CCF Jestress B79
Dam of Lot 42

Bred Heifers + Pairs

TIME TO SHINE COW FAMILY



S&C

lot 43



CT/LUNDY Time To Shine H 27
Dam of Lot 43



CMFM Time To Shine 031B
Granddam of Lot 43

lot 43 MISS CCF JULIETTE

DOB: 4/14/22 | ASA#: 4167308 | Tattoo: K27 | PB SM

MR CCF VISION

HPF QUANTUM LEAP Z952

MR CCF THE DUKE

X

CT/LUNDY TIME TO SHINE H 27

HTP SVF DEW THE STROKE

CMFM TIME TO SHINE 031B

CE	BW	WW	YW	MCE	Milk	MWW	Marb	REA	API
11.2	2.9	81.7	115.3	3.3	15.3	56.0	0.07	0.88	111.2

The cow families that Juliette combines are some of the breeds greats. On the top side you have Dew The Stroke N93A, who is the dam of the well-known Mr CCF 20-20, and on the bottom side the prolific Time To Shine family line that has done it all. Juliette comes to you in a moderate, complete, easy-doing, sound package. **Black heifer calf born 11/12/25 by Mr CCF Saddle Up.**

Bred Heifers + Pairs
PROVEN COW FAMILIES



lot 44
CIRCLE T K805

DOB: | ASA#: Pending | Tattoo: K805 | 1/2 SM 1/2 AN

MR TR HAMMER 308A ET

Sire **TJSC HAMMER TIME 35D**
TJSC SO SWEET 104X

X

Don **COMMERCIAL**

CE	BW	WW	YW	MCE	Milk	MWW	Marb	REA	API

K805 rises to the top of the bred pen in terms of completeness, elegance, structural integrity, and udder quality. She will calve to Mr CCF Cornerstone. **P.E. to Mr CCF Cornerstone**



TJSC Hammer Time 35D
Sire of Lot 44

bred heifers + pairs PROVEN COW FAMILIES



lot 45 CIRCLE T CINDERELLA

DOB: 2/12/23 | ASA#: 4597878 | Tattoo: L212 | PB SM

TJSC HAMMER TIME 35D

SC PAY THE PRICE C11

sire **STCC/PPK/DOSL BEAR CLAW 9022 X**
CHEZ STCC MILEY 5034C

dam **MLJM ASU CINDERELLA 1G**
MLJM CINDERELLA 33C

CE	BW	WW	YW	MCE	Milk	MWW	Marb	REA	API
9.4	2.9	69.6	97.5	2.7	16.1	50.8	0.12	0.86	111.1

Cinderella is a beautiful, bred female. She is one that catches your eye every time we are feeding in bred pen. Length, extension, center body, awesome feet and legs, simply put she is the front pasture kind. **Baldy heifer calf born 11/10/25 by Mr CCF Saddle Up.**

Bred heifers + pairs BLOWN AWAY COW FAMILY



lot 46 MISS CCF LAST CALL

DOB: 4/8/22 | ASA#: 4167323 | Tattoo: K346 | 3/4 SM 1/4 AN

CNS PAYS TO DREAM T759

MR CCF 20-20

sire **SC PAY THE PRICE C11**
LLSF URABABYDOLL U194

X

dam **MISS CCF BLOWN AWAY**
JAS JESTRESS 9015

CE	BW	WW	YW	MCE	Milk	MWW	Marb	REA	API
9.2	2.6	80.0	113.8	3.2	18.2	58.1	0.24	0.97	121.7

The baldy of the sisters. Last Call is a good built, nice necked, bold centered daughter of two-time National Western Champion Simmental bull, SC Pay The Price, backed by the Jestress 9015 cow family. **P.E. to Mr CCF Saddle Up from 3/2/25 to 5/12/25.**



lot 47 MISS CCF BLOWN AWAY K370

DOB: 4/10/22 | ASA#: 4594195 | Tattoo: K370 | 3/4 SM 1/4 AN

CNS PAYS TO DREAM T759

MR CCF 20-20

sire **SC PAY THE PRICE C11**
LLSF URABABYDOLL U194

X

dam **MISS CCF BLOWN AWAY**
JAS JESTRESS 9015

CE	BW	WW	YW	MCE	Milk	MWW	Marb	REA	API
9.1	2.6	80.0	113.7	3.2	18.3	58.1	0.25	0.99	114.6

The Blown Away donor is doing a solid job at producing the kind of cattle that work in the real world. This Pay The Price daughter is long spined, level out through her hip, and extended through her front one third. A full brother in blood commanded 8,000 in a past Clear Vision Sale. **Black heifer calf born 11/4/25 by Mr CCF Saddle Up.**



lot 48 MISS CCF BLOWN AWAY K371

DOB: 4/10/22 | ASA#: 4594196 | Tattoo: K371 | 3/4 SM 1/4 AN

CNS PAYS TO DREAM T759

MR CCF 20-20

sire **SC PAY THE PRICE C11**
LLSF URABABYDOLL U194

X

dam **MISS CCF BLOWN AWAY**
JAS JESTRESS 9015

CE	BW	WW	YW	MCE	Milk	MWW	Marb	REA	API
9.1	2.6	80.0	113.7	3.2	18.3	58.1	0.25	0.99	114.6

Blown Away K371 is another member of the Jestress 9015 cow family. We could write a lengthy book on what the 9015 donor has done for us over the years. But to keep it short and sweet, they are just good cattle and the Blown Away donor is carrying on the legacy of consistency. She will calve to Mr CCF Saddle Up. **P.E. to Mr CCF Saddle Up from 1/30/25 to 3/1/25.**

bred heifers + pairs

SERENA COW FAMILY



ML/RJ/STCC Serena D74
Dam of Lots 49 and 50



TJSC King Of Diamonds
Sire of Lots 49 and 50



lot 49

CIRCLE T SERENA K802

DOB: 9/10/22 | ASA#: 4597877 | Tattoo: K802 | PB SM

LLSF PAYS TO BELIEVE ZU194
sire **TJSC KING OF DIAMONDS** X dam **ML/RJ/STCC SERENA D74**
KLS DIAMOND W516 HF SERENA

CE	BW	WW	YW	MCE	Milk	MWW	Marb	REA	API
10.9	3.3	70.8	98.7	3.8	16.2	51.5	0.06	0.93	107.9

K802 is decorated with a pedigree of champions. Her sire Kind of Diamonds claimed the Champion Purebred Bull title at the 2019 NAILE. The dam of this female was admired by some of the most respected cattlemen during her show career. A few of her accomplishments were, Reserve Champion purebred female at the Jr. Nationals, Reserve Champion female NAILE Jr. Show and division wins at the National Western. Serena K802 will calve to the NAILE division winner, Mr CCF Saddle Up. **P.E. to Mr CCF Saddle Up from 3/5/25 to 5/10/25.**

lot 50

CIRCLE T SERENA K872

DOB: 2/19/22 | ASA#: 4597876 | Tattoo: K872 | PB SM

LLSF PAYS TO BELIEVE ZU194
sire **TJSC KING OF DIAMONDS** X dam **ML/RJ/STCC SERENA D74**
KLS DIAMOND W516 HF SERENA

CE	BW	WW	YW	MCE	Milk	MWW	Marb	REA	API
10.9	3.3	70.8	98.7	3.8	16.2	51.5	0.06	0.93	107.9

If the name "Serena" doesn't ring a bell to you in the Simmental breed, then you have probably been living under a rock. The Serena D74 was a popular champion during her show career, and now a donor working in her respective programs. This stout, big center ribbed King of Diamonds daughter will calve to your senior herd sire, Mr CCF Cornerstone. **P.E. to Mr CCF Cornerstone from ???**

bred heifers + pairs

PROVEN COW FAMILIES



JASS Innocent Lady 701D
Dam of Lot 51



Champion Hill Blackbird 8003
Dam of Lot 52



Maternal Sister to Lot 52

lot 51

CIRCLE T INNOCENT LADY L809

DOB: | ASA#: Pending | Tattoo: L809 | PB SM

HPF QUANTUM LEAP Z952

W/C BF INNOCENT MAN

g sire **WLE COPACETIC E02**

X

dam

JASS INNOCENT LADY 701D

CMFM JOY 02ZB

RUBY NFF RHYTHM 4B1

Projected EPDs

CE	BW	WW	YW	MCE	Milk	MWW	Marb	REA	API
11.2	1.6	69.2	102.3	5.5	12.1	46.7	0.18	0.90	119.4

Innocent Lady is a moderate framed, complete, big bellied Copacetic daughter. Her dam JASS Innocent Lady 701D was campaigned by the Jass family and earned several champion titles during her show career. She will calve to Mr CCF Saddle Up. **P.E. to Mr CCF Saddle Up from 3/2/25 to 5/12/25.**

lot 52

T-T BLACKBIRD L003

DOB: 11/1/23 | ASA#: 4384834 | Tattoo: L003 | 1/2 SM 1/2 AN

PROFIT

S A V BRAVE 8320

g sire **EC REBEL 156F**

X

dam

CHAMPION HILL BLACKBIRD 8003

DSFF COUNTESS 357D

S A V BLACKBIRD 5296

CE	BW	WW	YW	MCE	Milk	MWW	Marb	REA	API
5.5	3.7	81.2	125.8	2.3	21.7	63.9	0.29	0.53	108.3

8003 was the lead donor and matriarch of T-T females for many years. This female is huge ribbed, great fronted, with all the eye appeal you could ask for. Her maternal sibs have won multiple shows including Champion Percentage Missouri State Fair and Reserve Champion Percentage Ozark Empire. **AI'd to WHF/JS/CCS Woodford J001, due 12/28/25.**



DECEMBER 6, 2025 • 1:00 PM ET • WINDER, GEORGIA

Two-year-old fall bulls UP THE LIMIT COW FAMILY



lot 53

S&C

lot 53 MR CCF DESPERADO

DOB: 10/12/23 | ASA#: 4594179 | Tattoo: L912 | PB SM

KRJ DAKOTA OUTLAW G974

WLE COPACETIC E02

Sire **NEXT LEVEL**

X

Dam **R/F UP THE LIMIT H214**

KRD L CAEDENCE C37

CMFM BURN BABY



R/F Up The Limit H214
Dam of Lots 53 and 54



Next Level
Sire of Lot 53

CE	BW	WW	YW	MCE	Milk	MWW	Marb	REA	API
9.8	3.6	83.3	125.9	3.9	17.0	58.6	-0.03	1.10	108.3

Desperado demands attention when you walk in the bull pen. He's a full sib to Miss CCF Signature look who as a fall heifer calf commanded 20,000 for half interest and is now about to enter the donor pen! This Next Level son is so attractive yet massive in his skeletal build. His hind leg and foot structure is spot on. In just a short amount of time his dam R/F Up The Limit has made a splash in her first few calf crops, and the sky is the limit for what she can produce! It's an easy decision here and he's ready to go out and work.

Two-year-old Fall Bulls UP THE LIMIT COW FAMILY



lot 54

S&C



STCC Tecumseh 058J
Sire of Lot 54

lot 54 CIRCLE T MAVERICK

DOB: 10/16/23 | ASA#: 4594194 | Tattoo: L874 | PB SM

VCL FORESIGHT
sire **STCC TECUMSEH 058J** X WLE COPACETIC E02
HF SERENA R/F UP THE LIMIT H214
CMFM BURN BABY

CE	BW	WW	YW	MCE	Milk	MWW	Marb	REA	API
8.2	3.5	81.0	118.9	2.6	16.4	56.8	0.20	1.01	116.7

Maverick is another member of the R/F Up The Limit family line. This Tecumseh son comes to you with a long, extended, growthy, rugged look with the added center rib. His full and maternal sibs have been well accepted in the past Clear Vision Sale, bringing 20,000 for 1/2, 13,000, and 11,000 just to name a few. A young herd sire with a prolific family backing.

Two-year-old fall bulls

BREAKING HEARTS COW FAMILY



lot 55 MR CCF BRUTUS

DOB: 9/8/23 | ASA#: 4594167 | Tattoo: L624 | PB SM

W/C BANKROLL 811D

MR HOC BROKER

sire **W/C RED BIRD 269J**
W/C MISS ANGEL 2870Z

X

dam **MISS CCF BREAKING HEARTS**
MISS CCF FANTASY U18

CE	BW	WW	YW	MCE	Milk	MWW	Marb	REA	API
12.4	2.0	64.1	92.1	5.4	17.4	49.3	-0.08	0.96	101.2

The W/C Red Bird mating to the Miss CCF Breaking Hearts donor was exactly what we expected with the stout rugged bulls that it produced. The solid black bull of the trio of brothers is huge footed, big centered, easy doing. A full sib heifer sold a couple of years ago for 14,000. Brutus is ready to go out and work.



Miss CCF Breaking Hearts
Dam of Lots 55, 56 and 57



W/C Red Bird 269J
Sire of Lots 55, 56 and 57

Two-year-old fall bulls

BREAKING HEARTS COW FAMILY



lot 56 MR CCF APOLLO

DOB: 10/12/23 | ASA#: 4594168 | Tattoo: L630 | PB SM

W/C BANKROLL 811D

MR HOC BROKER

sire **W/C RED BIRD 269J**
W/C MISS ANGEL 2870Z

X dam **MISS CCF BREAKING HEARTS**
MISS CCF FANTASY U18

CE	BW	WW	YW	MCE	Milk	MWW	Marb	REA	API
12.4	2.0	64.1	92.1	5.4	17.4	49.3	-0.08	0.96	101.2

lot 57 MR CCF RAMBO

DOB: 9/6/23 | ASA#: 4594171 | Tattoo: L623 | PB SM

W/C BANKROLL 811D

MR HOC BROKER

sire **W/C RED BIRD 269J**
W/C MISS ANGEL 2870Z

X dam **MISS CCF BREAKING HEARTS**
MISS CCF FANTASY U18

CE	BW	WW	YW	MCE	Milk	MWW	Marb	REA	API
12.4	2.0	64.1	92.1	5.4	17.4	49.3	-0.08	0.96	101.2

If you have followed us from the beginning, you would know that the Sheza Fantasy cow family has played a huge role in our program over the years. The Breaking Hearts donor has continued her legacy by passing on the foot shape, hind leg, and overall easy doing attributes that this family has contributed for generations. W/C Red Bird, the red baldy sire of this duo of red brothers adds a little extra punch to his progeny. Apollo and Rambo are both stout, rugged, and masculine with added performance.

Two-year-old Fall bulls HEARTBREAK COW FAMILY



This Reckoning son has a cocky look about him. He is stout, big centered and sound on his feet and legs. His granddam is the Breaking Hearts donor who has been a go to for the last 10 years for consistency on bulls and females. His dam, Miss CCF Heartbreak, is past high seller in a Clear Vision online sale. Add this young bull to your operation and watch him go to work for you.

lot 58 MR CCF GRIFFEN

DOB: 9/5/23 | ASA#: 4594170 | Tattoo: L629 | PB SM

W/C RELENTLESS 32C

MR CCF 20-20

sire **RECKONING 711F**
RWA KRISHA-ET

X

dam **MISS CCF HEARTBREAK**
MISS CCF BREAKING HEARTS

CE	BW	WW	YW	MCE	Milk	MWW	Marb	REA	API
7.9	2.2	72.7	97.1	2.8	14.8	51.2	-0.07	0.86	104.5

Two-year-old Fall bulls

JESTRESS COW FAMILY



Mr CCF Priority
Maternal Brother to Lots 59 and 60

lot 59 MR CCF SMACKDOWN

DOB: 9/10/23 | ASA#: 4594169 | Tattoo: L628 | 5/8 SM 3/8 AN

W/C RELENTLESS 32C

FBF1 COMBUSTIBLE

sire **RECKONING 711F**
RWA KRISHA-ET

X

dam **MISS CCF JESTRESS B79**
JAS JESTRESS 9015

CE	BW	WW	YW	MCE	Milk	MWW	Marb	REA	API
8.8	2.7	73.0	103.1	4.3	16.4	52.9	0.04	0.77	103.3

L628 is well balanced, deep in his rib shape, while still carrying plenty of muscle and dimension. He strikes you as an easy doing, low maintenance herd sire while still offering a strong pedigree.

Two-year-old Fall bulls

JESTRESS COW FAMILY



lot 60 MR CCF NIGHTHAWK

DOB: 9/2/23 | ASA#: 4594172 | Tattoo: L342 | 3/4 SM 1/4 AN

MR SR MIC DROP G1534

FBF1 COMBUSTIBLE

sire **OMF JOURNEYMAN J24**
OMF DEKA D23

X

dam **MISS CCF JESTRESS B79**
JAS JESTRESS 9015

CE	BW	WW	YW	MCE	Milk	MWW	Marb	REA	API
11.2	2.1	86.9	138.4	6.1	20.8	64.2	-0.01	0.94	118.0

The look and eye appeal Mr CCF L342 carries himself with is hard to ignore. Long bodied, stout and striking from the side. He is backed by popular Miss CCF Jestress B79.



OMF Journeyman J24
Sire of Lot 60

Two-year-old fall bulls ALLEY COW FAMILY



Next Level
Sire of Lot 61

Talk about a stout rugged bull that is super sound, big footed and could cover a large set of cows. Paycheck is what we like to think of as a multipurpose bull that should add some look along with some growth power and performance to his calf crops.

lot 61 CIRCLE T PAYCHECK

DOB: 9/7/23 | ASA#: 4597875 | Tattoo: L856 | PB SM

KRJ DAKOTA OUTLAW G974

MR CCF 20-20

sire **NEXT LEVEL**

X

dam **TYLERTOWN**

KRDL CAEDENCE C37

HPF/B&K/AF ALLEY 355C

CE	BW	WW	YW	MCE	Milk	MWW	Marb	REA	API
8.8	4.1	87.7	121.9	4.0	17.8	61.5	-0.03	1.20	109.5



Clear Vision

SPRING ONLINE SALE

FEATURING
FALL BORN SHOW HEIFER PROSPECTS

FOLLOW US ON FACEBOOK FOR SALE DETAILS THIS SPRING
f C & C FARMS SIMMENTAL CATTLE

22-month-old bulls JESTRESS COW FAMILY



lot 62 MR CCF HENRY

DOB: 2/5/24 | ASA#: 4594175 | Tattoo: M342 | 3/4 SM 1/4 AN

HPF/HILL UPRISING C104

FBF1 COMBUSTIBLE

sire **SO REMEDY 7F**

X

dam

MISS CCF JESTRESS B79

B&K CREAM SODA 8D

JAS JESTRESS 9015

Projected EPDs

CE	BW	WW	YW	MCE	Milk	MWW	Marb	REA	API
12.9	1.9	77.9	121.1	5.5	19.7	58.6	-0.16	0.85	102.1

A 3/4 blood son of the of the popular champion SO Remedy, backed by the influence of the Jestress B79 donor. B79 has maintained her position as one of the top percentage donors here at C&C as she consistently produces the kind of cattle that work and produce in this business. Henry comes to you in a stout, rugged, eye-catching package that still holds structural integrity to balance the equation.



Miss CCF Jestress B79
Dam of Lot 62



SO Remedy 7F
Sire of Lots 62-66

22-month-old bulls

PASSION COW FAMILY



Miss CCF Passion
Dam of Lots 63 and 64



lot 63 MR CCF RANSOME

DOB: 2/7/24 | ASA#: 4594177 | Tattoo: M30 | PB SM

HPF/HILL UPRISING C104

LLSF PAYS TO BELIEVE ZU194

sire **SO REMEDY 7F**
B&K CREAM SODA 8D

X

dam **MISS CCF PASSION**
MISS CCF JESTRESS B79

CE	BW	WW	YW	MCE	Milk	MWW	Marb	REA	API
11.5	3.3	82.8	126.2	5.2	21.1	62.4	-0.12	0.90	102.9

The Passion donor continues to grow in favoritism among the donors here at C&C. After topping the sale a few years back at 25,000 1/2 interest she has shot right up to the top of the donor pen. The set of progeny out of the Passion donor are truly elite. Ransome is a stout, rugged, good looking son of the popular champion SO Remedy.

lot 64 MR CCF JUSTICE

DOB: 2/6/24 | ASA#: 4594176 | Tattoo: M31 | PB SM

HPF/HILL UPRISING C104

LLSF PAYS TO BELIEVE ZU194

sire **SO REMEDY 7F**
B&K CREAM SODA 8D

X

dam **MISS CCF PASSION**
MISS CCF JESTRESS B79

CE	BW	WW	YW	MCE	Milk	MWW	Marb	REA	API
11.5	3.3	82.8	126.2	5.2	21.1	62.4	-0.12	0.90	102.9

Justice stems from the most consistent mating of the B79 donor. His mother Miss CCF Passion is a full sib to the popular past high sellers Mr CCF Bills Paid, and Mr CCF Honcho. Also being a full sib to the senior herdsire selling in this years offering, Mr CCF Cornerstone. The Genetic line up in this bulls pedigree is second to none. M31 brings the added foot size, center rib, and power, with running gears to get out and go.

22-month-old bulls JESTRESS COW FAMILY



Miss CCF Jestress H305
Dam of Lots 65 and 66



lot 65 MR CCF APACHE

DOB: 2/12/24 | ASA#: Pending | Tattoo: M32 | 3/4 SM 1/4 AN

HPF/HILL UPRISING C104

WLE COPACETIC E02

sire **SO REMEDY 7F**

X

dam

MISS CCF JESTRESS H305

B&K CREAM SODA 8D

MISS CCF JESTRESS B79

Projected EPDs

CE	BW	WW	YW	MCE	Milk	MWW	Marb	REA	API
13.7	1.5	80.9	124.8	6.1	17.8	58.2	-0.02	0.94	110.3

lot 66 MR CCF ALAMO

DOB: 2/8/24 | ASA#: Pending | Tattoo: M34 | 3/4 SM 1/4 AN

HPF/HILL UPRISING C104

WLE COPACETIC E02

sire **SO REMEDY 7F**

X

dam

MISS CCF JESTRESS H305

B&K CREAM SODA 8D

MISS CCF JESTRESS B79

Projected EPDs

CE	BW	WW	YW	MCE	Milk	MWW	Marb	REA	API
13.7	1.5	80.9	124.8	6.1	17.8	58.2	-0.02	0.94	110.3

The Remedy x Jestress H305 combination has brought us a unique set of full brothers. H305 was purchased as the high selling female in a past Clear Vision Sale by the Lamberth family and was extremely competitive as a show heifer. But we always knew her time in the spotlight would shine in the donor pen. These bulls are big centered, stocky in their build and have running gears to last for years. It's a great time to dive into the great Jestress genetics with the added popular champion SO Remedy!

22-month-old bulls JESTRESS COW FAMILY

lot 67 MR CCF AVALANCHE

DOB: 2/3/24 | ASA#: 4594173 | Tattoo: M28 | 3/4 SM 1/4 AN

VCL FORESIGHT

FBF1 COMBUSTIBLE

sire **STCC TECUMSEH 058J**

X

dam **MISS CCF JESTRESS B79**

HF SERENA

JAS JESTRESS 9015

CE	BW	WW	YW	MCE	Milk	MWW	Marb	REA	API
8.4	3.5	80.1	116.6	3.3	18.8	58.7	0.12	0.93	114.2

He is well balanced, with adequate muscle shape and power. He's as sound as they come with a donor dam who has a long history of putting progeny into our sales. The Miss CCF Jestress B79 sons are sure to impress.



lot 67

lot 68 MR CCF WINCHESTER

DOB: 2/4/24 | ASA#: 4594174 | Tattoo: M29 | 3/4 SM 1/4 AN

VCL FORESIGHT

FBF1 COMBUSTIBLE

sire **STCC TECUMSEH 058J**

X

dam **MISS CCF JESTRESS B79**

HF SERENA

JAS JESTRESS 9015

CE	BW	WW	YW	MCE	Milk	MWW	Marb	REA	API
8.4	3.5	80.1	116.6	3.3	18.8	58.7	0.12	0.93	114.2

A baldy that couples a good profile look, a stout, square hip and sound hind leg. He's one you don't question his longevity while his dam offers a lengthy production record. Make sure to check him out.



STCC Tecumseh 058J - Sire of Lots 67-69

lot 69 MR CCF SCOUT

DOB: 2/3/24 | ASA#: 4594178 | Tattoo: M603 | 5/8 SM 3/8 AN

VCL FORESIGHT

FBF1 COMBUSTIBLE

sire **STCC TECUMSEH 058J**

X

dam **MISS CCF JESTRESS B79**

HF SERENA

JAS JESTRESS 9015

Projected EPDs

CE	BW	WW	YW	MCE	Milk	MWW	Marb	REA	API
8.4	3.5	80.5	116.9	3.2	19.5	59.7	0.11	0.93	113.9

M603 is a rugged, deep bodied, sound moving herd sire prospect similar to the other full sib Tecumseh son's selling. He should project the right amount of performance and power into a calf crop.



lot 69

22-month-old bulls PROVEN COW FAMILIES



Miss CCF Double D D101
Dam of Lot 70



SO Remedy 7F
Sire of Lot 70



Next Level
Sire of Lot 71

lot 70 SCSF ROCKY M209

DOB: 2/9/24 | ASA#: 4581882 | Tattoo: M206 | 3/4 SM 1/4 AN

HPF/HILL UPRISING C104

FBF1/SF IGNITION

gire **SO REMEDY 7F**
B&K CREAM SODA 8D

X

dam **MISS CCF DOUBLE D D101**
JAS JESTRESS 9015

CE	BW	WW	YW	MCE	Milk	MWW	Marb	REA	API
13.5	0.8	72.1	108.7	5.5	20.5	56.5	-0.10	0.63	112.7

The Double D donor has proven time and time again that she can make her progeny are the ones that can compete in the showring and the real world. This Remedy son combines the right amount of stoutness while still having presence and style. Maternal sisters have sold for 15,500, 15,000, 10,000, and 9,500.

lot 71 CIRCLE T KEVIN

DOB: 2/14/24 | ASA#: 4597874 | Tattoo: M823 | PB SM

KRJ DAKOTA OUTLAW G974

MR CCF 20-20

gire **NEXT LEVEL**
KRD L CAEDENCE C37

X

dam **TYLERTOWN**
HPF/B&K/AF ALLEY 355C

CE	BW	WW	YW	MCE	Milk	MWW	Marb	REA	API
8.8	4.1	87.7	121.9	4.0	17.8	61.5	-0.03	1.20	109.5

The dam of Kevin, Tylertown S7F, is a popular Mr. CCF 20-20 daughter, backed by the famed Allie cow family and she is proving to be a key asset in the donor pen at Circle T. This Next Level son is sound, functional, deep middled, with stoutness and substance.

age-advantage bull JESTRESS COW FAMILY



Mr CCF Bills Paid
Full Brother to Lot 72



Mr CCF Honcho
Full Brother to Lot 72

lot 72 MR CCF CORNERSTONE

DOB: 1/10/21 | ASA#: 4129946 | Tattoo: J398 | 3/4 SM 1/4 AN

CNS PAYS TO DREAM T759 FBF1 COMBUSTIBLE
sire **LLSF PAYS TO BELIEVE ZU194** X dam **MISS CCF JESTRESS B79**
LLSF URABABYDOLL U194 JAS JESTRESS 9015

CE	BW	WW	YW	MCE	Milk	MWW	Marb	REA	API
11.5	1.8	73.7	111.3	6.3	19.6	56.4	0.08	0.82	119.1

A pedigree that only continues to get better with time. Mr CCF Cornerstone is a son of the prolific Miss CCF Jestress B79 and by LLSF Pays To Believe! He has worked as our senior herd sire for the last several years and we have been extremely pleased with the outcome of his calves. Some of his first progeny are now becoming first calf heifers and the udder quality is second to none. Don't miss the opportunity to add an already tried and proven herd sire to your program.

Two-year-old Fall bulls

PRINCESS COW FAMILY



EGL GCC Red Eagle E7194
Sire of Lot 73



Full Sister to Lot 73

lot 73 DIESEL

DOB: 9/8/23 | RAAA#: Pending | Tattoo: L10 | PB AR

RED U-2 RIFF 1213C

5L CROSSFIRE 1894-5666

sire **EGL GCC RED EAGLE E7194**

X

dam **VBCF PRINCESS C.F. 8U**

TJS SARABEL A174

GMRA PRINCESS 720

RAAA Projected EPDs

CED	BW	WW	YW	Milk	ME	CEM	Marb	REA	ProS
9	0.7	64	94	21	3	3	0.38	0.03	46

EGL GCC Red Eagle has taken the Red Angus breed by storm making elite show cattle but also high performing bulls and cows alike. As the loan Red Angus bull he pulls his own weight in terms of stoutness and power, a strong structural base and rugged appearance.

gemen MR CCF 20-20



lot 74A & 74B MR CCF 20-20

DOB: 9/14/14 | ASA#: 2964446 | Tattoo: 100B | PB SM

MR NLC UPGRADE U8676

WLE POWER STROKE

gire **MR CCF VISION**
GCF MISS ELSA

X

HTP SVF DEW THE STROKE
HTP SVF HONEYDEW

CE	BW	WW	YW	MCE	Milk	MWW	Marb	REA	API
12.5	1.7	82.1	110.2	3.2	10.4	51.4	-0.02	1.23	114.6

Selling two packages of 5 units, conventional semen.

MR CCF 20-20 continues to stand as one of the most influential Purebred Simmental sires of the past decade, with progeny that have excelled in both the pasture and the nation's most competitive sale rings. His offspring are consistently admired for their structural looseness, added presence, and the extra shape and power he reliably transmits. As daughters rise to the top in production and sons prove themselves as herd sires, the value of his influence only grows stronger. With his untimely passing and limited inventory remaining, opportunities to secure 20-20 genetics have become incredibly scarce and highly coveted.



740 26th Street
Roseville, IL 61473

