

SANDEEN GENETICS PRESENTS

12
13
25

AT HIGH NOON
BLAKESBURG, IA

BUILDIN' A BRAND PRODUCTION SALE

51202

Sandeen Genetics



Sale Staff:

Jered Shipman, Auctioneer 806-983-7226
Tom Rooney, Special Assignment 515-491-6025
Dalton Lundy, Consultant 502-727-6898
Thomas Lundy, Consultant 502-471-0354
Kelvin Jorgensen, Consultant 402-366-9475
Mike Marlow, Consultant 405-880-0108
Buddy Roberston, Consultant 580-747-7000
Kendall Bremer, Consultant 641-799-4911
Matt McFarlane, Consultant 916-803-3113
Kent McCune, Consultant 817-602-8629
Greg Miller, Consultant 608-778-8785
Kent Jaecke, Consultant 405-408-2440
Jared Ruter, Midwest Marketer 815-238-7530
Shane Ryan, Midwest Marketer 309-371-7490
Dr. Dewy Nibe, Sale Vet 641-777-9881

Sale Location:

Sandeen Sale Facility at Sandeen Farms.
Physical Address: 3261 Monroe-Wapello Rd
Blakesburg, Iowa 52536

Area Motels (20 minutes from sale site):

Hampton Inn, Ottumwa, IA 641-814-8888
Cobblestone Inn, Ottumwa, IA 641-244-3645
Holiday Inn Express, Ottumwa, IA 641-814-4500
Fairfield Inn, Ottumwa, IA 641-682-0000

Air Transportation:

Des Moines Airport is 1 1/2 hours away, Kansas
City is 3 1/2 hours away. Light aircraft service at
Bloomfield and Centerville, IA.

Sale Videos:

Brad Hook Promotions 641-344-3193

Sale Management:

Dwyer Cattle Services
Bob Dwyer 309-337-1404
Nick Dwyer 309-337-6404
Online www.dwyercattle.com



Sandeen Genetics Presents

BUILDIN' A BRAND

Saturday December 13, 2025
High Noon • Blakesburg, IA

3261 Monroe-Wapello Rd
Blakesburg IA 52536
Scott Sandeen 641-777-9153
www.sandeengenetics.com

Guest Consignors:

Ferguson Cattle Co.

John 440-478-0782

Lindsey 440-478-0503

Triple G Livestock

Nate Greiner 641-660-4065

T-K Ranch

Kyle Kirkpatrick 641-777-3508



Scan the code for our Sale Location!
Will open up in your Maps App!



Online Video

Previews Available

www.sandeengenetics.com

Reflections from the heart & hand of Sandeen Genetics owner Scott Sandeen.

The story of Sandeen Genetics traces back to 1948 when my great-grandfather, W.L. Swaim, first purchased the original 160-acre piece of ground that we still live on today. Actually, our history goes back a few years prior to that, when he was managing what was known at the time as the Doc Pearson farm. A beautiful grass farm that would have been perfect for W.L.'s dream of raising and selling his registered horned Hereford bulls. After several unsuccessful attempts to acquire that farm, the opportunity arose to purchase what is now the headquarters of Sandeen Genetics.

Though W.L. was unable to purchase the property he originally had his heart set on, things fell into place allowing us to buy it some 60 years later, during the Great Recession of 2008. Now it all ties together with the home place, making a contiguous 1,200-acre spread of lush, green rolling hills, dotted with solid black and black baldie cows. Though my great-grandfather may have preferred Hereford cows, I think he would be proud to have his entire family living and working on the same ground that he strived to acquire many decades ago.

Family is the Foundation

I'm Scott Sandeen and my wife, Jill, and I represent the fourth generation, and our two sons (along with their cousins) are the fifth generation on this land. We raise and market registered seedstock genetics. I believe that's something that's just in your blood. You either have it, or you don't.

My children share the family's passion for agriculture. Jill and I's oldest son, Logan (19), currently attends Iowa State University. Our youngest, Lawson (16), works tirelessly every day on our operation without missing a beat in his high school endeavors.

In addition to running the Simmental and SimAngus cattle operation, in 2020 we purchased a Titan West Livestock Equipment dealership. We enjoy selling the brand of equipment we have used on our operation for 30 years.

Many facets of the family are foundational to the inspiration and success of Sandeen Genetics. My mother, Rhonda, comes from a family of great stockmen, firmly rooted in the commercial cattle industry. I rely heavily on the mechanical expertise of my brother, Eric, who owns a diesel shop and ensures the farm's equipment keeps running. Eric and his wife, Julie, are also very involved in the farming operation, as are their children, Kennedy and Wyatt, who do much of the Aling of the sale heifers these days.

THE STOCKMAN

more than a hobby.

*Article appeared in the November 2025 issue,
Written by Cheryl Kapes & Scott Sandeen.
www.stockmanmag.com*



Scott, Jill, Logan, & Lawson Sandeen



*Eric, Julie, Kennedy, Tray,
& Wyatt Sandeen*



Tim & Rhonda Sandeen



In the Genes

I was only 2 years old when W.L. died, but I seemingly inherited his love for studying and understanding genetics and his appreciation for quality stock. He was said to have been a man of vision and one to take action when it came to searching out and acquiring the best seedstock possible to improve his registered horned Hereford herd. These were the traits that my dad, Tim, obviously attained from his many hours spent learning from "Pa," as he referred to his grandfather.

My dad's father, Fred Sandeen, also had a heart for agriculture, particularly row crops. His farming career took a tragic turn when my dad was 13 years old. Fred became paralyzed following a surgery he endured to remove a brain tumor.

Invaluable Lessons

I lost my dad (who I worked side-by-side with daily) two years ago. As I reflect on him, he too was undoubtedly a man of vision and action. When I was a young boy growing up in the 80s and 90s, we would occasionally go to a sale. At the sales I always wanted to try to buy, what was considered, the really good cattle at that time. But Dad would usually shut me down.

Fortunately, I had two things working in my favor, but I didn't realize or appreciate them at the time. First, I didn't have the funds to buy what I thought I wanted, and second, my dad would preach to me that those are not the kind of cows you want. It aggravated me that he wouldn't get on board with the idea, but looking back it's obvious - he was right. Those cattle were tall, gutless, hard-doing, and poor-structured. He knew they were not what we needed to make a herd of cows out of. He also knew we simply didn't have the resources to supplement a herd of cows like that.

Dad had already learned these lessons out of necessity, as he was unexpectedly handed the reins to the operation when his grandfather, W.L., died of pneumonia, in 1983, at the peak of the 1980s farm crisis. At that point, Dad had to figure out, real quick, how to make a living with a herd of Hereford cows, when money was tight in the country and nobody wanted to buy a Hereford bull.

Immediately, he pivoted to a commercial operation and bought some of the more moderate framed Angus bulls he could find at the time to breed to his grandpa's Hereford cows. The resulting replacement heifers from that forward thinking move, would become the cow herd that I would grow up with and learn from.

It took me a few years to figure out Dad's train of thought of not wanting what was popular at the time, but it eventually sunk in when I started to evaluate those black baldie cows he had raised. As the years went on, I noticed how easy-fleshing and productive they were and how long they lasted. Many of them produced well into their teens and a few hitting 20 years old.

I learned to study and appreciate the good structured, economically efficient, commercial stock that we had at the time. I also realized along the way that if I wanted those really high caliber Simmental cattle that I had my eyes set on, I was going to have to try to become a really good breeder and raise them myself. We certainly couldn't buy our way there. Looking back, that was probably the single greatest thing that could have happened to me.

Art of Genetic Selection

I've learned over the years that there truly is an art to breeding good cattle! I absolutely admire the rare ones that we can consider to be master breeders. The true artists in breeding cattle are getting fewer all the time. Many breeders are becoming dependent on a computer making their breeding decisions for them, and it's causing the true stockman to become a dying breed.

I'm all for technology and the use of scientific methods as a tool, but not as a total replacement of a true stockman's well-trained eye. My dad always preached to me to "breed for females that will make great cows, and you'll always stay in business!" But there are many traits in making great cows that are hard to quantify with a number.

That stockman type mentality is probably what's kept us in business all these years. We expect the stock that we sell to have all the fundamentals in check to go out and make a highly functional cow for many years to come. But I think one thing that makes our cattle somewhat unique, is that we've worked very hard to blend the most functional, maternal type genetics with an extra attractive phenotype, so you can be proud to go out and see what you've got grazing your pastures.

I've had numerous customers tell me that their freeze branded Sandeen cows are always the ones that visitors ask about, and that's quite a compliment to us! Although we've really never spent much time in the show ring, we've always worked hard to breed cattle that stand out and have that certain look about them, so you know that's a Sandeen cow.



All in the (Cow) Family

Cow families are extremely important to us. Over the years we've narrowed it down to just a handful of cow families that have consistently produced those particular traits we deem non-negotiable in our breeding program and have continued to do it generationally.

Likely the most recognizable of those cow families would be the Donna tribe. Derived from the Angus strain of this cow family, which has been further developed and vigorously utilized by the Coleman Angus Ranch in Montana. They have gained worldwide notoriety for their exceptional maternal oriented characteristics and massively constructed phenotype.

When we saw the original Donna J311 cow in one of Coleman's first sale ads we believed that was one of the greatest Angus cows we had ever seen. The following year, Coleman highlighted their ad with Coleman Donna 386, the direct daughter of Donna J311, which was perhaps even more impressive. At that point, Dad and I both agreed that we needed to somehow harness the goodness of those Donna cows to begin a new genetic line in the Simmental breed.

We were extremely fortunate that everything fell into place to allow that to come to fruition when Sandeen Donna 8386 emerged. She represented the original half-blood SimAngus matriarch that nearly all of our Donnas trace back to today.

Constant Genetic Improvement

Within each of the cow families that we utilize today, we try to recognize the very best individuals that we believe will have the ability to further progress the characteristics we desire for the next generation amongst their family line. The most efficient way we've found to do this is by using a rather intensive In Vitro Fertilization (IVF) program.

We have done most of our genetic multiplying work through Trans Ova Genetics for nearly 30 years with very consistent, successful results. We will generally work anywhere from 12 to 20 donors per year, with many of them being partnership cows owned with other breeders from across the country.

In the partnership scenario, we feel the fairest way is to split the embryos. So, you have your embryos, and we have ours. Then when it's time to market the progeny from those embryos, we offer the option for the partner to sell their embryos or offspring back through our annual Buildin' a Brand sale, held the second Saturday of December each year. We feel that helps give a little security to the folks who might be buying a new donor, if they know they have the option of a built-in market to help sell their product if they need it.

Guiding the Next Generation

We were very fortunate when we were just starting out in the Simmental business to be surrounded by some really good, established breeders like Larry Drake, Denny Cason, and Reck Bros. who were willing to help a young guy out. I've never forgotten that, and we've always tried to do what we could to help a young or new breeder get a jumpstart with the best genetics possible for their budget.

One thing I want the young Simmental or livestock enthusiasts in general to know... Many of the "big name" breeders you see advertised in all the livestock publications or the ones standing in front of the backdrop holding a grand champion banner, came from a very humble beginning and just worked their tail off to get to where they're at. So, don't ever be intimidated or too afraid to talk to them to ask for advice. Most have been right where you are today and would love to help.



Sandeen Donna Tribe



Coleman Donna 386



Sandeen Donna 8386



\$524K - Sandeen Donna 8302



Sandeen Donna 5120



\$32K - Sandeen Donna 1640



\$210K - Sandeen Donna 1031



\$81K - Sandeen Donna 1717



\$200K - Donna 1142



\$80K - Sandeen Donna 1249



\$130K - Sandeen Donna 1316



Sells as Lot 5 - Sandeen Donna 4153



\$185K - Sandeen Donna 4106



Sells as Lot 1 - Sandeen Donna 5856



Sells as Lot 2 - Sandeen Donna 5386

Your Simmental Source for Maternally Proficient Genetics



Lot 1

1

Sandeen Donna 5856

3/17/25 • PB Simmental • ASA 4602364 • P • Tattoo 5856

W/C Bankroll 811D

Ruby SWC Battle Cry 431B

W/C Red Bird 269J

Sandeen Donna 8302

W/C Miss Angel 2870Z

Sandeen Donna 5120

CE	BW	WW	YW	Milk	Stay	API
14.7	-1.0	67.1	101.3	19.0	10.2	109.6

Open Heifer



Sandeen Donna 8302

- Lot 1 represents the prototypic model that we have stived for in every way.
- She is an absolute “Ground Pounder”! Just an incredible amount of mass and overall dimension for her age. She’s wide muzzled and wide centered, with tremendous vital organ capacity through her chest floor, heart girth, and fore-rib. Her wedge-shaped design is generally associated, by the most astute cattlemen, with one that will live a long, fertile, productive life. Aided by the flexibility and correctness of her skeletal conformation.
- Sandeen Donna 5856 constitutes a very unique merging of exceptional phenotypic attributes, with one of my all-time favorite pedigree’s. Combining, what I feel, is one of the best breeding Simmental bulls of our time, W/C Red Bird 269J, with one of the high-income producing Simmental cows in history, Sandeen Donna 8302.
- I think we have finally hit the mark of perfection with this one, in terms of being our ideal “Sandeen” type female.



Lot 2

2

Sandeen Donna 5386

3/28/25 • PB Simmental • ASA 4602366 • P • Tattoo 5386

Second Chance 601H

Ruby SWC Battle Cry 431B

TL On The Run 106K

Sandeen Donna 8302

EC Countess 283F

Sandeen Donna 5120

CE	BW	WW	YW	Milk	Stay	API
11.7	-0.5	70.1	106.5	20.2	9.9	104.5

Open Heifer



TL On The Run

- Sandeen Donna 5386 is a very special female! This is, in my mind, the type that should be saturating the show ring today, if we truly want to improve the breed and guide our young livestock enthusiasts down the right path to becoming good cattleman. It needs to be the type and kind that can show at a competitive level, but most importantly, develop into a highly productive, long lasting, monetarily rewarding female at the conclusion of her show career. I foresee Lot 2 as being precisely that kind. She's built for the long haul, with the big feet, ample bone, and smooth, flexible joints. Her wedge-shaped design identifies her as the "Cowman's Kind", yet she has the profile and pizzaz to justify spending her youth at the business end of a show halter.
- This will be one of the first "TL On The Run" daughters to sell this fall, and I think she certainly legitimizes all the hype that has surrounded that bull, to this point. Compound that with the fact that this is a direct daughter of the unparalleled producer, Sandeen Donna 8302, and I think this is one exciting individual!



3

Sandeen Donna 5159

3/16/25 • PB Simmental • ASA 4602365 • P • Tattoo 5159

W/C Bankroll 811D

Ruby SWC Battle Cry 431B

W/C Red Bird 269J

Sandeen Donna 8302

W/C Miss Angel 2870Z

Sandeen Donna 5120

CE	BW	WW	YW	Milk	Stay	API
14.7	-1.0	67.1	101.3	19.0	10.2	109.6

Open Heifer

- Sandeen Donna 5159 is an excellent representation of what we feel is “Good Stock”!
- This full sister to the Lot 1 feature is here to help demonstrate the power of proven, high quality, consistent genetics. This one has been good since she hit the ground. She’s always had that presence about her that made her a standout all summer, in the pasture.
- I love consistency in cattle. And though our open heifer division in this offering is not large in numbers, it is likely unsurpassed in the uniformity for type and kind. Each one of these females could be shown at a very respectable level, but they’re ultimately destined for the Donor pen.



W/C Red Bird



Sandeen Donna 8302

Sandeen Donna 8302 Embryos



Lot 4

BOWJ Manifest

4A

Sandeen Donna 8302 Embryos

PB Simmental • Donor ASA 3564034 • Sire ASA 4435312

4/B Dynamo

Ruby SWC Battle Cry 431B

BOWJ Manifest 985M

Sandeen Donna 8302

HCC0 Countess 985F

Sandeen Donna 5120

CE	BW	WW	YW	Milk	Stay	API
10.4	0.2	72.8	104.7	18.8	10.2	106.0

1 package of 3 IVF Heifer Embryos

4B

Sandeen Donna 8302 Embryos

PB Simmental • Donor ASA 3564034 • Sire ASA 3974327

W/C Bankroll 811D

Ruby SWC Battle Cry 431B

W/C Red Bird 269J

Sandeen Donna 8302

W/C Miss Angel 2870Z

Sandeen Donna 5120

CE	BW	WW	YW	Milk	Stay	API
14.7	-1.0	67.1	101.3	19.0	10.2	109.6

1 package of 3 IVF Heifer Embryos

- Sandeen Donna 8302 has accomplished more for herself and for our program than I would have ever dreamed possible when I was a young boy with a wild dream of raising Simmental cattle for a living. She's a cow that just refuses to be outdone. Every year I think she can't produce something better than she did the year before, yet every year she just seems to grab another gear. She's surpassed the \$2 million mark in lifetime earnings, which is a feat that very few cows (of any breed) throughout history have accomplished. Her most recent achievement was from a \$4,850 embryo purchased by Black Gold Simmentals in Canada, that resulted in a tremendous heifer that they marketed to the tune of \$95,000 to LaBatte Simmentals! Prior to that she had produced the \$210,000 Sandeen Donna 1031 selling to Jones Show Cattle, Ohio; Sandeen Donna 1142 purchased by Ferguson Cattle Co, OH; \$185,000 Sandeen Donna 4106 going to Link Livestock, KS; \$140,000 Sandeen Donna 0747 purchased by Eash Land & Cattle, IA; and several others that are impacting programs across the county.
- Both embryo packages selling here are as exciting as anything we've ever offered from 8302. Manifest is a bull that caught our eye when he sold. When I heard the testimonial from the Moore Land & Cattle firm that purchased him, this was the first mating that came to my mind.
- I think the Red Bird mating speaks for itself, if you turn this catalog back a couple of pages, to Lot 1. I truly thought there was no way Donna 8302 could make one any better than the \$185,000 Lot 1 female from last year. Though some might argue with me (and they wouldn't necessarily be wrong) the Lot 1 female in this sale book, by W/C Red Bird 269J has hit the mark, in my vision of Simmental perfection.



Lot 5

5

Sandeen Donna 4153

1/18/24 • PB Simmental • ASA 4594895 • P • Tattoo 4153

W/C Fort Knox 609F

Ruby SWC Battle Cry 431B

W/C Bet on Red 481H

Sandeen Donna 8302

W/C Angel 7113E

Sandeen Donna 5120



Sandeen Donna 8302

CE	BW	WW	YW	Milk	Stay	API
12.6	-0.4	72.6	111.0	21.7	11.1	116.2

AI 6/10 to Sandeen Easy Rider 3114 #:4602428

- Bonafide Sale Feature!
- This has been one of my favorite bred females to watch develop all along. She bears strong resemblance to her dam, in terms of her wedge-shape design, and bone work, but with a bit of advantage in the upward projection and angularity through her front one-third.
- Donna 8302 has probably placed more daughters in embryo transplant facilities across the continent than any other cow in our program, and I would say there's a strong chance Donna 4153 will spend a fair portion of her existence there as well.
- Certainly, a front pasture individual that will mature into an absolutely gorgeous mature cow!



Lot 6

6

Sandeen Donna 4264

1/19/24 • PB Simmental • ASA 4594896 • P • Tattoo 4264

W/C Fort Knox 609F

Ruby SWC Battle Cry 431B

W/C Bet on Red 481H

Sandeen Donna 8302

W/C Angel 7113E

Sandeen Donna 5120

CE	BW	WW	YW	Milk	Stay	API
12.6	-0.4	72.6	111.0	21.7	11.1	116.2

AI 5/22 to FF Burden 032H #:4090088



Sandeen Donna 3841 - \$18K Full Sibling

- Sandeen Donna 4264 is a full sister to lot 5, Sandeen Donna 4153, as well as a multitude of past sale favorites. Such as the \$53,000 Sandeen Donna 3025 going to Triple G Livestock and the \$18,000 Sandeen Donna 3841 purchased by Haugh Cattle Co.
- We appreciate the Bet on Red females for their structural integrity, foot quality, and added eye appeal. The productivity level should be off the charts with Miss Werning KP 8543U as the granddam in 3 slots of the sire's pedigree and Sandeen Donna 8302 for a dam. A very complete, "no holes" type of female.



Lot 7

7

Sandeen Donna 4065

2/26/24 • PB Simmental • ASA 4594894 • P • Tattoo 4065

HPF/Hill Uprising C104

Ruby SWC Battle Cry 431B

SO Remedy 7F

Sandeen Donna 8302

B&K Cream Soda 8D

Sandeen Donna 5120

CE	BW	WW	YW	Milk	Stay	API
13.3	-0.3	74.8	117.0	20.9	9.6	103.9

AI 4/19 to WINC All Right

The Remedy cattle, as a sire group, have been dominant in both the sale and show rings across the country. It's easy to see why when you study Sandeen Donna 4065. When she hit the picture pen, it was obvious, she understood the assignment! It takes an animal with excellent structure, and certain presence about them, to pull that off... and she has it! One other thing she has, however, that not all the others do, is Sandeen Donna 8302 for a dam. There are certain things that separate the good ones from the great ones, and a dam of such magnitude can be that difference.



Sandeen Donna 4106 - \$185,000 Maternal Sibling



Lot 8

8

Sandeen Donna 4046

2/17/24 • 1/2 Simmental • ASA 4598001 • P • Tattoo 4046

SAV Renown 3439

Ruby SWC Battle Cry 431B

Coleman Glacier 041

Sandeen Donna 8302

Coleman Donna 439

Sandeen Donna 5120

CE	BW	WW	YW	Milk	Stay	API
13.4	-1.5	81.9	132.9	22.9	12.1	109.4

AI 4/17 to WINC All Right

This blaze-faced Coleman Glacier daughter has a strikingly similar profile to her mother! She's got the wedge-shaped design with a great deal of mass from fore-rib to flank and what a beautiful udder she's beginning to display! There are several really good Donna cows lined up in this pedigree. Bred up early to WINC All Right for a $\frac{3}{4}$ sib to last years \$185,000 high seller, Sandeen Donna 4106.



Sandeen Donna 8302



Coleman Glacier 041



Lot 9

9

Sandeen Donna 4125

2/17/24 • 1/2 Simmental • ASA 4598002 • P • Tattoo 4125

SAV Renown 3439

Ruby SWC Battle Cry 431B

Coleman Glacier 041

Sandeen Donna 8302

Coleman Donna 439

Sandeen Donna 5120

CE	BW	WW	YW	Milk	Stay	API
13.4	-1.5	81.9	132.9	22.9	12.1	109.4

AI 4/14 to GCC Night Owl



Sandeen Donna 3103 - \$61,000 Full Sibling

This full faced Baldy definitely grabs your attention when driving through the bred heifer pasture. Nearly ideal in size, type, and kind for a half-blood foundation base-cow. Study the cows in the pedigree. Sandeen Donna 8302, Coleman Donna 439, Coleman Donna 714, SAV Blackcap May 4136. The dollars generated from these few cows, alone is absolutely staggering! Very few chances, in all of America, to get that many top producing cows, from both breeds in one pedigree.

A full sib was purchased by Draper Cattle for \$61,000 in the 2023 "Buildin' a Brand" Sale. Unsurpassed predictability in this pedigree! Bred up early for an awesome mating to GCC Night Owl.



Lot 10

10

Sandeen Donna 4030

1/12/24 • PB Simmental • ASA 4594897 • P • Tattoo 4030

HTP/SVF Duracell T52

Ruby SWC Battle Cry 431B

HPF Quantum Leap Z952 Sandeen Donna 8302

RP/MP Right to Love 015

Sandeen Donna 5120

CE	BW	WW	YW	Milk	Stay	API
12.7	0.0	78.8	116.0	16.6	6.4	107.1

AI 5/12 to FF Burden 032H #:4090088



- Power Cow!!
- Donna 4030 is a three-dimensional Powerhouse! This is a very versatile female that has the shape, dimension, and power to go north across the border, and raise bulls for one of the large Canadian ranches, but she also has the fleshing ability to stay in fescue country and thrive here as well! Her mating to FF Burden will only amplify her already robust type design.





Lot 11

11

Sandeen Donna 4049

1/13/24 • PB Simmental • ASA 4594898 • P • Tattoo 4049

HTP/SVF Duracell T52

Ruby SWC Battle Cry 431B

HPF Quantum Leap Z952 Sandeen Donna 8302

RP/MP Right to Love 015

Sandeen Donna 5120

CE	BW	WW	YW	Milk	Stay	API
12.7	0.0	78.8	116.0	16.6	6.4	107.1

AI 6/1 to Sandeen Easy Rider 3114 #:4602428



Sandeen Donna 1717 - \$81,000 Full Sibling

- When viewed in person, Sandeen Donna 4049 very closely mirrors her \$81,000 full sister, Sandeen Donna 1717, who was very popularly campaigned by the Henderson family a few years ago. She has that added size and performance, along with the additional stoutness of skeleton, and superior running gear.
- The Quantum Leap X 8302 mating has been very good! Producing multiple sale features that have gone on to become highly contributing donors for their respective operations. Aside from the \$81,000 Donna 1717, there was also the \$55,000 Sandeen Donna 2382 and the \$38,000 Sandeen Donna 1024. Both going to the Ferguson Cattle Co and have since produced division winners and high sellers for them.
- A stout, power-cow in the making with a world of breeding potential.



Lot 12

12

Sandeen Donna 4487

3/5/24 • PB Simmental • ASA 4598010 • P • Tattoo 4487

CKCC LD Dimension 8965

W/C Relentless 32C

Wheatland Dimensional 1147] Sandeen Donna 1249

JPCC Miss Foxy 115F

Sandeen Donna 8405



Wheatland Dimensional - \$200,000 AI Sire

CE	BW	WW	YW	Milk	Stay	API
8.0	1.7	80.8	123.0	19.9	11.8	108.3

AI 5/16 to Sandeen Easy Rider 3114 #:4602428

- Donna 4487 is one of the most complete and just flat impressive bred females in the offering! She is “Good Stock”! Just the right amount of stoutness and power for a female and excellent in her structural design. Perhaps her greatest attribute, is the pedigree that lends her the phenotypic characteristics that we’re so fond of. Her dam, Sandeen Donna 1249, is quickly becoming one of my favorite cows in the donor pasture! She’s proving herself to be an incredibly valuable asset, by producing some of the top calves in the ET pastures. You will see a lot more from 1249 in the years to come.
- When we acquired the US semen rights on Wheatland Dimensional with Werning Cattle Co, I looked most forward to being able to blend his genetics with that of our Donna line. We are finally able to enjoy the fruits of that labor, and I must say, they are certainly living up to our expectations.

Sandeen Donna 1249 Embryos



Lot 13

Royal Merchant

13A

Sandeen Donna 1249 Embryos

PB Simmental • Donor ASA 4152561 • Sire ASA 4135052

CKCC LD Dimension 8965

W/C Relentless 32C

Wheatland Dimensional 1147J Sandeen Donna 1249

JPC Miss Foxy 115F

Sandeen Donna 8405

CE	BW	WW	YW	Milk	Stay	API
8.0	1.7	80.8	123.0	19.9	11.8	108.3

1 package of 3 IVF Heifer Embryos

13B

Sandeen Donna 1249 Embryos

PB Simmental • Donor ASA 4152561 • Sire CAN BPG1485747

Wheatland Man O'War

W/C Relentless 32C

Wheatland Royal Merchant Sandeen Donna 1249

Wheatland Lady 92H

Sandeen Donna 8405

CE	BW	WW	YW	Milk	Stay	API
-	-	-	-	-	-	-

1 package of 3 IVF Heifer Embryos

Sandeen Donna 1249 is a quickly rising figure in our program, much like her sister, Sandeen Donna 1316. Her Dimensional daughter, Lot 12, is an excellent example of the quality she is producing for us. Donna 1249 is the more feminine and refined of the sisters. While maintaining the "Donna" style chest floor and massive rib cage, she has more of the look of a lady. Very angular through her front one-third, with a tighter udder attachment and small equally spaced teats. Simply put, she is the prototypic female for fertility and longevity. She's the ideal female to mate to the Canadian "power bulls" from the Wheatland program. As you study this sale book, you will find how impressed we are with the Dimensional's, and how he mates ideally with this type of cow. The other mating to Wheatland Royal Merchant is very exciting in the fact that there is very little semen that got across the boarder to make these embryos from the Canadian Agribition Champion.



Lot 14

14A *Sandeen Donna 1316 Embryos*
PB Simmental • Donor ASA 3963159 • Sire ASA 4435312

4/B Dynamo
BOWJ Manifest 985M
HCCO Countess 985F

W/C Relentless 32C
Sandeen Donna 1316
Sandeen Donna 8405

CE	BW	WW	YW	Milk	Stay	API
8.3	3.1	75.4	105.5	19.5	10.6	106.0

1 package of 3 IVF Heifer Embryos

14B *Sandeen Donna 1316 Embryos*
PB Simmental • Donor ASA 3963159 • Sire ASA 3974327

W/C Bankroll 811D
W/C Red Bird 269J
W/C Miss Angel 2870Z

W/C Relentless 32C
Sandeen Donna 1316
Sandeen Donna 8405

CE	BW	WW	YW	Milk	Stay	API
12.5	1.8	68.6	101.0	19.8	10.7	109.6

1 package of 3 IVF Heifer Embryos

- Two years ago, I stated that we'd not found a hoop that 1316 couldn't jump through, and today she just keeps surpassing our expectations. Her first 10 offspring offered at public auction have commanded an average of \$23,950, with the top contenders, valuing in at \$60,000, \$54,000, and \$52,500.
- I felt confident a few years ago when boldly proclaiming that Donna 1316 would be a top rival for Donna 8302 one day, in terms of consistently producing top quality stock and overall earning potential. To this point, she has given us no reason to doubt that statement.
- Sandeen Donna 1316 is the "Power Cow" amongst our donor arsenal. Yet, she combines that power with an overwhelming elegance and consistently transmits it into her progeny. We marvel at the stoutness and overall functionality of her skeletal composition. Her broad muzzle, width of pin set, and large, square, draft horse quality feet lend her a uniqueness amongst many contemporaries within the breed, when considering that merged in between those attributes is that distinctively bold and robust "Donna" style rib-cage.
- We believe these are both outstanding matings that should complement 1316 very well. As you read through this catalog, you will find our opinion of W/C Red Bird 269J is held in the highest regard. The lot B sire, Manifest is a new, young herd sire selection by Moore Land & Cattle that intrigued us last spring, with his impressive phenotype and functionality. Both great matings that will result in an excellent ROI opportunity for someone that wants to tie into what is becoming, one of the most proven genetic contributors of our program.



Lot 15

15

Sandeen Donna 3041

8/26/23 • PB Simmental • ASA 4360265 • P • Tattoo 3041

Yardley Utah Y361

Remington Lock n Load 54U

W/C Relentless 32C

Sandeen Donna 8405

Miss Werning KP 8543U

Sandeen Donna 8386

CE	BW	WW	YW	Milk	Stay	API
10.3	1.5	67.3	98.2	19.1	12.1	112.2

AI 4/25 to TL On the Run

Absolute Powerhouse Donor in the making!! Donna 3041 is likely the stoutest, most powerful female in the offering. Which stands to reason when we consider she is a full sister to the \$130,000 Sandeen Donna 1316. This has been one of the most consistently good pedigrees developed in our program over the past few years, in terms of putting out females that have gone into progressive donor programs. However, 3041 could be the most likely to rival the Donna 1316 cow, in regard to the stoutness of skeleton and the overall mass and performance she exhibits.

This is definitely one to get excited about! Particularly the fact that her first calf by TL One The Run, could be a home run!



TL On The Run



Sandeen Donna 8405



Lot 16

16

Sandeen/FSCI Donna 4251

2/17/24 • PB Simmental • ASA 4598007 • P • Tattoo 4251

SVF Steel Force S701

KCC1 Exclusive 116E

Mr HOC Broker

Sandeen Donna 1142

JM BF H25

Sandeen Donna 8302

CE	BW	WW	YW	Milk	Stay	API
8.4	2.4	80.4	116.0	14.1	8.5	95.6

AI 5/22 to FF Burden 032H #:4090088



Sandeen Donna 1142 - \$200,000 Dam

- If you are a firm believer in genetics, with an appreciation for maternal greatness, as I am, this pedigree has to excite you! An own Broker daughter, by the \$200,000 Sandeen Donna 1142, that topped the 2022 "Buildin' a Brand" sale. To top that off, she's bred to the FF Burden bull, to create a big footed, belly draggin', baldy with her first offspring.
- Donna 1142 is a model of phenotypic perfection as a mature cow. She may be the only female in our entire donor arsenal in contention for a more impressive udder than her dam, Sandeen Donna 8302. Watch for big things to come from 1142 in the future and expect the genetic contribution from lot 15 to be great!



1142 - Udder



Lot 17



Donna 1316 - \$130K Dam



GCC Night Owl



FSCI Donna L332 - \$60K

17

Sandeen Donna 4166

4/2/24 • PB Simmental • ASA Pending • P • Tattoo 4166

W/C Bet on Red 481H

GCC Genoa 2118K

JS Black Satin 9B

W/C Relentless 32C

Sandeen Donna 1316

Sandeen Donna 8405

CE	BW	WW	YW	Milk	Stay	API
9.5	2.4	71.4	104.7	22.0	11.0	104.5

AI 4/29 to GCC Night Owl

18

Sandeen Donna 4325

4/7/24 • PB Simmental • ASA Pending • P • Tattoo 4325

HPF/Hill Uprising C104

SO Remedy 7F

B&K Cream Soda 8D

W/C Relentless 32C

Sandeen Donna 1316

Sandeen Donna 8405

CE	BW	WW	YW	Milk	Stay	API
11.2	2.5	77.4	117.8	21.6	10.0	102.2

AI 4/29 to GCC Night Owl

4166 & 4325:

A sharp featured pair of sisters by the powerful Sandeen Donna 1316, who just recently set records at the Ferguson Cattle Co "Rare Vintage" sale where her first 10 offspring to sell averaged nearly \$24,000. In that event a full sister to lot 17 commanded \$30,000 for ½ interest, then later went on to be a Reserve Division winner at the NAILE. Lot 16 is a full sib to the \$52,500 '24 "Buildin' a Brand" sale feature, Sandeen Timoteo 4462. Though these females are both a little bit younger and greener than some of their contemporaries, make no mistake, there is Power In the Blood that courses through their veins!



Lot 18

Customer Success

A few years ago John and Lindsey Ferguson of Ferguson Cattle Co. made arrangements to come to our sale to inspect the stock. They were interested in this Simmental line of the Donna cow family that we were developing. From that point we forged a friendship and they began their quest to own the very best Donna females that we had to offer.

One of their first purchases was an open heifer, Sandeen Donna 1316, in the '22 "Buildin' a Brand" sale for \$130,000. They studied their lesson and got her mated right with each IVF cycle. They did their homework on picturing and marketing that offspring. At the end of the day of their 2025 "Rare Vintage" sale event, they had gathered up a grand total of \$239,500 on the first 10 head sold from, Sandeen Donna 1316!

That is proof that the highest-priced ones can bring the quickest and most extensive return on investment. They are the ones that everyone remembers, and everyone wants their genetics.



Sandeen Donna 1316 - \$130K Selection



FSCI Donna L332 - \$60K



FSCI Remedy L374 - \$54K

**10 ET's by 1316 Grossed \$239,500 at
Ferguson's Rare Vintage Production Sale**

Two years ago, we sold a set of Sandeen Donna 8302 embryos through the "March Madness" sale, hosted by our Canadian friends at the Bohrsen Marketing firm. The embryos were purchased by Black Gold Simmentals for \$4,850 per. That embryo acquisition resulted in a heifer that they raised, bred and marketed through the "Evolution" sale as the co-high selling lot for a figure of \$95,000.



\$95K High Seller at the "Evolution"

In 2021 our good friend and resident cowboy, Spencer Goodson, decided he wanted to invest in some embryos from our program. He bought a set of Donna 8302 embryos for \$3000 per. He put them in his commercial herd of cows and raised a really nice baldy heifer from them. We helped him get her bred, but he wasn't sure if he wanted to sell her or keep her. So we were able to help him find a buyer that was interested in letting him keep part of her. He sold the heifer for \$20,000 for half interest, allowing him to be able to continue utilizing her genetics. Creative solutions are hard to beat.



Sandeen Donna 8302

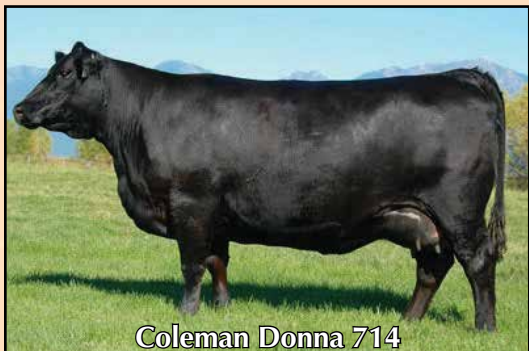
These are just a few small examples of what our customers have done with their past purchases. We are so proud of that fact that our customers have gone on to have tremendous success with their selections out of this sale. As you make plans to attend and purchase through this sale be sure to note that we offer cattle at all price points and buyers have found success from not only the top lots but also the lots closer to commercial value. We all start somewhere in this industry and we look forward to working with all levels of producers as they grow their operations with a strong maternal foundation!



Lot 19



Coleman Donna 3125



Coleman Donna 714



Coleman Donna 386

19

Sandeem Donna 3321

8/26/23 • Reg. Angus • AAA Pending • P • Tattoo 3321

SAV Renown 3439

Leachman Right Time

Coleman Glacier 041

Coleman Donna 3125

Coleman Donna 439

Coleman Donna 714

AI 4/16 to DHD Traveler 6807

- Purebred Angus Donor Prospect!!
- I believe Donna 3321 would have been amongst the Elite's, at the front end of the recent, record-breaking Coleman Angus Ranch Female Sale. And that's quite a statement!
- A masterful combination of power and mass, blended with an undeniable twist of elegant femininity. Females like this legitimize the legendary stature of the maternal greats that saturate her pedigree such as SAV Renown, Leachman Right Time, Coleman Donna 714, SAV Blackcap May 4136. Then top it off with the fact that she's carrying the service to one of the Angus breeds most historically relevant figures ever, DHD Traveler 6807.
- This one gets me excited! Not only in terms of the incredible opportunities she could offer on the Angus side of the equation, but I see her as the "Base Cow" to create the foundation SimAngus genetics for a powerful new "Donna" line in our Simmental gene pool.



Lot 20



Sandeen Lady G 0344

20

Sandeen Lady G 4952

2/26/24 • 3/4 Simmental • ASA 4598011 • P • Tattoo 4952

W/C Bankroll 811D

Mr HOC Broker

W/C Red Bird 269J

GCC Ms Broker D198

W/C Miss Angel 2870Z

Y129

CE	BW	WW	YW	Milk	Stay	API
13.0	0.9	70.6	104.2	20.0	9.0	109.5

AI 5/4 to GCC Night Owl



Sandeen Lady G 3250
\$88K Maternal Sibling

4952 is the striking Baldy representative of this impressive trio of sisters, and she leaves little to be desired. Probably the most attractive up through that front one-third, yet still maintains that dense, 3-dimensional build and superior structure that we would expect from the Red Bird x D198 cross. We purchased the D198 cow, years back, from the G- Ranch with the sole intention of mating her to the Lock N Load line of descendants. And she has quite simply never missed. Her first flush of daughters by 1143Y averaged nearly \$30,000, with Sandeen Lady G 0344 being the top seller at \$92,000. In the '23 "Buildin' a Brand" sale, she featured a Bet on Red daughter, Sandeen Lady G 3069, that rang a bell at \$43,000. In the '24 sale Ferguson Cattle selected Sandeen Lady G3250 for \$88,000. The D198 cow consistently transmits fertility, foot quality, and structural integrity into her progeny. I feel confident in saying these Red Birds are as good as anything we've had out of her to this point.



Lot 21

The term "Belly Dragger" comes to mind with this one! 4322 is a densely constructed, forage efficient, Powerhouse with extra bone and foot. She's been one of my favorite females with every trip through the bred heifer pasture. We love the density, and the structural integrity of the Red Bird sired cattle. The D198 donor dam on the bottom of this pedigree guarantees the productivity level will be unsurpassed.

Her mating to FF Burden is the perfect example of breeding "like kind" to "like kind", which will only accentuate those traits that we so appreciate about his outstanding individual.



FF Burden 032H

21

Sandeen Lady G 4322

2/24/24 • 3/4 Simmental • ASA 4598012 • P • Tattoo 4322

W/C Bankroll 811D

Mr HOC Broker

W/C Red Bird 269J

GCC Ms Broker D198

W/C Miss Angel 2870Z

Y129

CE	BW	WW	YW	Milk	Stay	API
13.0	0.9	70.6	104.2	20.0	9.0	109.5

AI 5/22 to FF Burden 032H #:4090088

22

Sandeen Lady G 4142

2/23/24 • 3/4 Simmental • ASA 4598013 • P • Tattoo 4142

W/C Bankroll 811D

Mr HOC Broker

W/C Red Bird 269J

GCC Ms Broker D198

W/C Miss Angel 2870Z

Y129

CE	BW	WW	YW	Milk	Stay	API
13.0	0.9	70.6	104.2	20.0	9.0	109.5

AI 5/25 to Sandeen Easy Rider 3114 #:4602428

I've always been a firm believer that the most consistent producing stock comes from a litter of really good siblings, rather than having a great one and the rest being just marginal. This trio of Red Bird X D198 sisters would exemplify that to the fullest! That, in my mind, is a sign of good stock! The kind that will keep you in the beef business. Lot 21 carries an interesting bonus, being bred to our new resident calving ease sire, Sandeen Easy Rider. He is the replacement for his deceased sire, Sandeen Easy Out. Easy Rider has a rather distinguished pedigree, tracing back to Sandeen Donna 8302, through his \$200,000 dam, Sandeen Donna 1142, and linebred to 8302's dam, Sandeen Donna 5120. Very interesting mating here!



Lot 22



Lot 23

23

Sandeen Donna 4139

2/22/24 • 3/4 Simmental • ASA 4595844 • P • Tattoo 4139

CKCC LD Dimension 8965

W/C Lock n Load 1143Y

Wheatland Dimensional 1147] Sandeen Donna 1421

JPCC Miss Foxy 115F

Coleman Donna 4211

CE	BW	WW	YW	Milk	Stay	API
10.1	1.3	79.5	121.4	22.4	13.0	105.0

AI 4/12 to GCC Night Owl



Sandeen Donna 1421

- Donna 4139 is one of the most impressive Dimensional daughters in the offering. Deriving from an exceptional, young, budding SimAngus donor, Sandeen Donna 1421, that possesses both the strong genetic lineage and the phenotypic attributes that we insist on, in order to produce the product that we are striving for. Certainly an outstanding individual with the potential to find her way in to someone's donor arsenal one day.
- Her January purebred calf by Night Owl should be very good!



Lot 24

24

Sandeen Donna 4105

2/22/24 • 3/4 Simmental • ASA 4595845 • P • Tattoo 4105

CKCC LD Dimension 8965

W/C Lock n Load 1143Y

Wheatland Dimensional 1147J Sandeen Donna 1421

JPCC Miss Foxy 115F

Coleman Donna 4211

CE	BW	WW	YW	Milk	Stay	API
10.1	1.3	79.5	121.4	22.4	13.0	105.0

AI 5/29 to Sandeen Easy Rider 3114 #:4602428



Wheatland Dimensional 1147J

I really think these Dimensionals are going to be incredibly good cows. This big bodied, ideal teated female should be no exception. Especially when being backed by a great 1143Y daughter that traces to the likes of such Angus greatness, Coleman Charlo, N Bar Shadow; Coleman Donna, N Bar Primrose.



Dimensional Sibling Udder



Dimensional Daughter Udder



Dimensional's Dam Hoof



Lot 25

25

Sandeen Donna 4421

2/24/24 • 3/4 Simmental • ASA 4595841 • P • Tattoo 4421

SVF Steel Force S701

W/C Lock n Load 1143Y

Mr HOC Broker

Sandeen Donna 1421

JM BF H25

Coleman Donna 4211

CE	BW	WW	YW	Milk	Stay	API
10.1	1.5	67.1	96.4	20.8	11.9	95.4

AI 4/12 to WINC All Right



Mr HOC Broker

Donna 4421 is a very complete, “no holes” type of a female. The prepotency of her genetic lineage is as good as any in the entire offering! Study her pedigree... all the way back! It begins with the magical Simmental cross of Broker X Lock N Load. Then the Angus portion of the equation only enhances our confidence in the consistency of high quality progeny that this one will deliver time and time again.

Grandams pedigree reads: Coleman Charlo x Coleman Donna 005 (N Bar Shadow x Coleman Donna 386). It's just really hard to top the maternal goodness that must be coursing through the veins of this stunning young female.



Lot 26



Next Level

26

Sandeen Donna 4245

2/20/24 • 3/4 Simmental • ASA 4595843 • P • Tattoo 4245

KRJ Dakota Outlaw G974

W/C Lock n Load 1143Y

Next Level

Sandeen Donna 1421

KRDL Caedence C37

Coleman Donna 4211

CE	BW	WW	YW	Milk	Stay	API
12.5	1.0	70.7	103.8	22.6	14.4	111.3

AI 5/25 to Sandeen Easy Rider 3114 #:4602428



Sandeen Donna 3421
\$10K Maternal Sibling

An awesome patterned Next Level daughter that commands your attention every time we go through the pasture. Very erect in the way her neck comes up out of her shoulder. She's got that deep, sweeping ribcage that we love to see and a highly photogenic profile. This female did sustain a mild foot/leg injury as a calf that causes her to have a slight hitch to her giddy up on her right rear limb, but it does not appear as though it is going to bother her in any way, moving into production.

Her maternal sister, Sandeen Donna 3421, was the \$10,000 selection of a very astute local cattlemen in the last years "Buildin' a Brand" Sale.



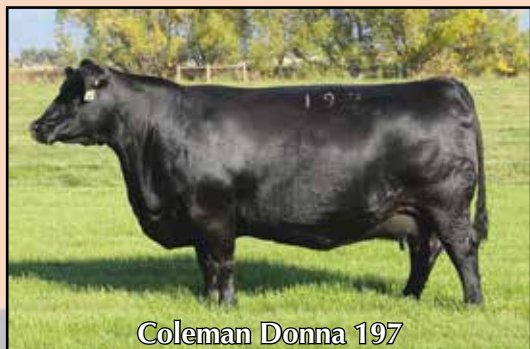
Lot 27



Wheatland Dimensional



Coleman Donna 0399



Coleman Donna 197

27

Sandeen Donna 4002

2/24/24 • 1/2 Simmental • ASA Pending • P • Tattoo 4002

CKCC LD Dimension 8965

Coleman Resolve 7219

Wheatland Dimensional 1147J Coleman Donna 0399

JPCC Miss Foxy 115F

Coleman Donna 197

CE	BW	WW	YW	Milk	Stay	API
-	-	-	-	-	-	-

AI 5/25 to Sandeen Easy Rider 3114 #:4602428

- What an incredibly beautiful baldy foundation female we have here in Donna 4002. She is living proof that that true breeding bulls of a masculine stature will produce highly feminine daughters. As you study this catalog, you'll see that Wheatland Dimensional is doing just that and will go down in Simmental history as a sire of great daughters! Now study the Angus dam's side of the equation. Absolutely saturated with maternal legends such as SAV Renown, Coleman Charlo, Coleman Donna 714, Coleman Donna 197, KMK Donna J311.
- A maternal sister by W/C Red Bird, was the \$48,000 selection of loyal associate of the program, Mr. Tom Draper, in the '24 "Buildin' a Brand" sale. The guess work is gone here. This is undoubtedly the caliber of foundation female that is necessary in order to begin development in those highly sought after pure-breds. Without sacrificing the fundamental traits that we love and appreciate about our half blood foundation base cows.



Lot 28

28

Sandeen Donna 3441

8/16/23 • 1/2 Simmental • ASA Pending • P • Tattoo 4002

CKCC LD Dimension 8965

Coleman Resolve 7219

Wheatland Dimensional 1147J Coleman Donna 0399

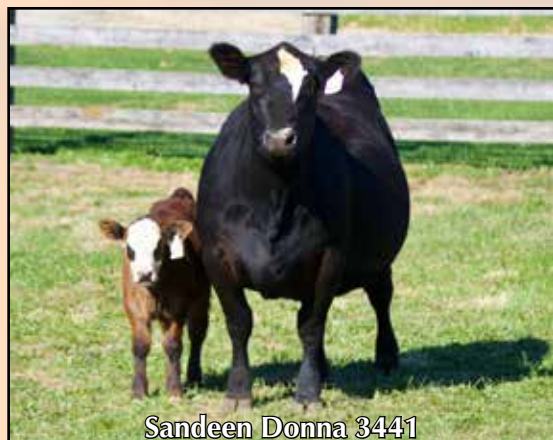
JPCC Miss Foxy 115F

Coleman Donna 197

CE	BW	WW	YW	Milk	Stay	API
-	-	-	-	-	-	-

Heifer by W/C Lock n Load 1143Y born 10/1/25

- A little different twist from the norm in this stunning young matron. This impressive 2 year old pair offers us the projection of what these females may look like in 6 months from now while suckling a calf. I must say, as I study the femininity, the bold-sprung rib cage, the ideal udder suspension, teat size and teat placement. It does make me feel that we are on the right path with the fundamental maternal components in place to ensure the fertile, attractive, long lasting cows that we have strived to build for the past several decades.
- This is more than just a pretty, front pasture cow. She's a full sister to the lot 26 bred female in this sale, as well as a \$48,000 sale feature from the '24 "Buildin' a Brand" Sale.
- She's a foundation building block that blends some of the most powerful Canadian Simmental genetics with the finest Montana origin Angus bloodlines available. Study the goodness in this young mother and consider the breeding opportunities at hand.



Sandeen Donna 3441



\$48K - Sandeen Donna 4183



Lot 29

29

Sandeen Donna 4866

2/24/24 • 3/4 Simmental • ASA 4595124 • P • Tattoo 4866

Mr TR Hammer 308A ET

Remington Lock n Load 54U

Conley GCC Shocker C19

Sandeen Donna 6386

Conley Sheza Star W32

Coleman Donna 8386

CE	BW	WW	YW	Milk	Stay	API
11.3	-0.1	69.2	105.9	15.1	8.4	105.5

AI 4/9 to GCC Night Owl



- Sandeen Donna 4866 is one of my favorite bred females in the entire offering! She's a massive, 3-dimensional specimen, with the necessary angularity through her front one-third, to translate into longevity and fertility.
- She's the type we would like to have a whole pasture full of. Ideal in her growth curve, as she was always at the forefront, in terms of overall size and performance. However, I've noticed recently she's begun to pull back the reins on the growth, to the point where it would appear she's going to mature into a very sensibly sized cow, with a beautiful udder beginning to form.
- Incredibly good Shocker daughter from the Donna 6386 dam, which held the timeless pedigree of Lock N Load X Donna 8386.



Lot 30



6386 - Udder



GCC Night Owl

30

Sandeen Donna 4489

2/24/24 • PB Simmental • ASA 4595128 • P/S • Tattoo 4489

CKCC LD Dimension 8965

Remington Lock n Load 54U

Wheatland Dimensional 1147J Sandeen Donna 6386

JPCC Miss Foxy 115F

Coleman Donna 8386

CE	BW	WW	YW	Milk	Stay	API
7.9	1.0	76.8	118.7	19.1	12.2	111.9

AI 4/24 to GCC Night Owl

31

Sandeen Donna 4182

2/23/24 • PB Simmental • ASA 4595127 • P • Tattoo 4182

CKCC LD Dimension 8965

Remington Lock n Load 54U

Wheatland Dimensional 1147J Sandeen Donna 6386

JPCC Miss Foxy 115F

Coleman Donna 8386

CE	BW	WW	YW	Milk	Stay	API
7.9	1.0	76.8	118.7	19.1	12.2	111.9

AI 4/19 to GCC Night Owl

4489 & 4182:

A very impressive pair of baldy Wheatland Dimensional daughters from the Donna family. These are an excellent representation of what we would classify as "Good Stock". They've got the fertility and fleshing ability of Donna 6386 along with a little extra stoutness and performance from their Canadian bred sire. Expect a pair of beautiful uddered, phenotypic standouts at calving time with these two!



Lot 31



Lot 32

32

Sandeen Donna 3358

10/18/23 • 3/4 Simmental • ASA 4517168 • P • Tattoo 3358

Mr TR Hammer 308A ET

W/C Relentless 32C

Conley GCC Shocker C19

Sandeen Donna 1244

Conley Sheza Star W32

Sandeen Donna 8405

CE	BW	WW	YW	Milk	Stay	API
10.5	2.1	78.0	117.4	16.0	7.8	114.4

AI 4/18 to GCC Night Owl



Sandeen Donna 1244

This fall holdover Shocker daughter is one stout, massive beast! What a beautiful udder she's beginning to set! From a dam that has perhaps the most proven and predictable pedigree on the ranch. Making Donna 1244 a full sister to Sandeen Donna 1316, who most recently averaged \$23,950 on her first set of offspring marketed through the Ferguson Cattle Co's "Rare Vintage" sale. Power in the blood... and on the hoof in this powerful individual.



Lot 33

Sandeen Donna 8405

33

Sandeen/LK Donna 3042

9/3/23 • PB Simmental • ASA 4352309 • P • Tattoo 3042

Yardley Utah Y361

Remington Lock n Load 54U

W/C Relentless 32C

Sandeen Donna 8405

Miss Werning KP 8543U

Sandeen Donna 8386

CE	BW	WW	YW	Milk	Stay	API
10.3	1.5	67.3	98.2	19.1	12.1	112.2

AI 5/4 to FF Burden 032H #:4090088

34

Sandeen/LK Donna 3048

8/29/23 • PB Simmental • ASA 4352307 • P • Tattoo 3048

Yardley Utah Y361

Remington Lock n Load 54U

W/C Relentless 32C

Sandeen Donna 8405

Miss Werning KP 8543U

Sandeen Donna 8386

CE	BW	WW	YW	Milk	Stay	API
10.3	1.5	67.3	98.2	19.1	12.1	112.2

AI 4/13 to TJ Sandhill Swag

3042 & 3048: These are likely the last set of full sibs to the famed Donna 1316 to ever cross the "Buildin' a Brand" auction block. The only mating that has rivaled these Relentless x 8405's for consistency of the top-quality progeny might be that of their dam, with the Lock N Load x Donna 8386 pedigree. Highly predictable genetics in this powerful set of sisters!





4476 is an absolute “ground pounder”- “belly dragger”,-“forage converter” ... whatever term you want to use to describe one of this nature...she’s it! She’s wide centered, stout hipped, and cool fronted, with ample bone and foot to support the load. There may be bigger heifers in the pasture, but they’re likely not going to out-weigh her by much in the end. Beautiful udder beginning to form, just as we would expect from her lineage.

35

Sandeen Lady C 4476

2/24/24 • 1/2 Simmental • ASA Pending • P • Tattoo 4476

Remington Lock n Load 54U

Coleman Charlo

W/C Lock n Load 1143Y

Miss Charlo 6281

Aubreys Black Blaze III

Vermillion Angus 281

CE	BW	WW	YW	Milk	Stay	API
7.9	1.0	76.8	118.7	19.1	12.2	111.9

AI 4/21 to GCC Night Owl

36

Sandeen Lady C 4292

2/24/24 • 1/2 Simmental • ASA Pending • P • Tattoo 4476

Remington Lock n Load 54U

Coleman Charlo

W/C Lock n Load 1143Y

Miss Charlo 6281

Aubreys Black Blaze III

Vermillion Angus 281

CE	BW	WW	YW	Milk	Stay	API
7.9	1.0	76.8	118.7	19.1	12.2	111.9

AI 4/12 to TJ Sandhill Swag

4292 is the bigger, stouter, hairier of the sister, with the added bone and hip that we come to expect from this timeless mating of 1143Y x Miss Charlo 6281. This mating has created a lot of the very best commercial bulls sold off of this ranch, and even a \$50,000 female is Sandeen Lady C 2281.





Lot 37

37

Sandeen Lady 5288

3/26/25 • 3/4 Simmental • ASA 4602368 • P • Tattoo 5288

W/C Bankroll 811D

W/C Lock n Load 1143Y

W/C Red Bird 269J

Sandeen Lady 2281

W/C Miss Angel 2870Z

Miss Charlo 6281

CE	BW	WW	YW	Milk	Stay	API
15.3	-0.1	60.5	89.6	21.0	8.5	114.1

Open Heifer



Sandeen Lady 2281 - \$50,000 Dam

- Sandeen Lady 5288 represents the first progeny brought to auction from the \$50,000 Sandeen Lady C 2281, selected by a loyal associate of the Sandeen Genetics program, Mr. Tom Draper. This sporty young female merges some of our most highly revered blood lines with W/C Red Bird – Lock N Load 1143Y – Coleman Charlo. All fantastic female makers!
- This one's a bit greener in her condition, but extremely impressive in her structure, with plenty of rib shape, ideally positioned head and neck, and an extremely thick hair coat.
- A great deal of promise and genetic potential in this youthful show prospect.



Lot 38

4106 - \$185K Full Sibling

38

Sandeen Donna 4133

3/28/24 • PB Simmental • ASA 4515263 • P • Tattoo 4133

OMF Epic E27

Ruby SWC Battle Cry 431B

WINC All Right 213K
WINC Hollie

Sandeen Donna 8302
Sandeen Donna 5120

CE	BW	WW	YW	Milk	Stay	API
12.0	-1.1	76.6	116.4	24.5	13.2	120.4

AI 5/23 to THSF Lover Boy B33

If there is one heifer in the offering that is destined for show heifer production, it would be Sandeen Donna 4133. Near flawless in her structure and her fluidity when in motion is truly impressive. Her full sister was the \$185,000 feature in the '24 "Buildin' a Brand" sale. I have no doubt this one will raise some great ones!

39

Sandeen Donna 4113

2/22/24 • PB Simmental • ASA 4595122 • P • Tattoo 4113

W/C Fort Knox 609F

Ruby SWC Battle Cry 431B

W/C Bet on Red 481H
W/C Angel 7113E

Sandeen Donna 8302
Sandeen Donna 5120

CE	BW	WW	YW	Milk	Stay	API
12.6	-0.4	72.6	111.0	21.7	11.1	116.2

AI 5/23 to GCC Night Owl

Donna 4113 is a very nice blaze faced 8302 daughter that is very angular in her design and correct in her structure. She did make it to the picture pen, but due to her overly gentle nature, she had zero cares to give about what we were trying to accomplish. So rather than putting a picture in of her looking at the camera or picking grass in a carefree manner, we opted for no photo and hope she practices for video day.



Lot 40

This Bet On Red x 8302 mating has been very consistent in terms of producing functional, attractive, front pasture type of females. Her mating to our new calving ease sire will result in a calf linebred to both Sandeen Donna 8302 and Miss Werning KP 8543U. Two of the most productive cows in the Simmental database.



Sandeen Donna 5120

40

Sandeen Donna 4475

2/24/24 • PB Simmental • ASA 4595123 • P • Tattoo 4475

W/C Fort Knox 609F

Ruby SWC Battle Cry 431B

W/C Bet on Red 481H

Sandeen Donna 8302

W/C Angel 7113E

Sandeen Donna 5120

CE	BW	WW	YW	Milk	Stay	API
12.6	-0.4	72.6	111.0	21.7	11.1	116.2

AI 6/20 to Sandeen Easy Rider 3114 #:4602428

41

Sandeen Donna 4646

2/20/24 • 1/2 Simmental • ASA 4598003 • P • Tattoo 4646

SAV Renown 3439

Ruby SWC Battle Cry 431B

Coleman Glacier 041

Sandeen Donna 8302

Coleman Donna 439

Sandeen Donna 5120

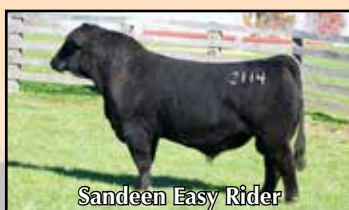
CE	BW	WW	YW	Milk	Stay	API
13.4	-1.5	81.9	132.9	22.9	12.1	109.4

AI 5/25 to Sandeen Easy Rider 3114 #:4602428

The only solid black sibling of the Glacier x 8302 flush, which offers her a few more mating options with some of the baldy sire's that we may not want to sample on her baldy counterparts. I would love to see the results of this one mated to Wheatland Dimensional!



Lot 41



Sandeen Easy Rider



Lot 42

A stout, bold ribbed, attractive profiling Remedy x 8302 daughter. Her mating to FF Burden should be nearly ideal, as he is masterful at producing cattle that come flat and level out over their tailheads, which is the only thing I'd like to mend on 4494.



FF Burden 032H

42

Sandeen Donna 4494

1/10/24 • PB Simmental • ASA 4594891 • P • Tattoo 4494

HPF/Hill Uprising C104

Ruby SWC Battle Cry 431B

SO Remedy 7F

Sandeen Donna 8302

B&K Cream Soda 8D

Sandeen Donna 5120

CE	BW	WW	YW	Milk	Stay	API
13.3	-0.3	74.8	117.0	20.9	9.6	103.9

AI 5/12 to FF Burden 032H #:4090088

43

Sandeen Donna 4984

2/18/24 • PB Simmental • ASA 4594893 • P • Tattoo 4984

HPF/Hill Uprising C104

Ruby SWC Battle Cry 431B

SO Remedy 7F

Sandeen Donna 8302

B&K Cream Soda 8D

Sandeen Donna 5120

CE	BW	WW	YW	Milk	Stay	API
13.3	-0.3	74.8	117.0	20.9	9.6	103.9

AI 5/23 to TJ Sandhill Swag

4984 is an ultra-feminine, big bodied female. Bred to the calving ease specialist from Wearing & McConahay programs, Sandhill Swag.



Lot 43



Lot 44

4033 is one of the more impressive Remedy daughters in the offering. Added substance and fleshing ability, with that undeniably beautiful 8302 style udder beginning to set.



SO Remedy 7F

44

Sandeen Donna 4033

1/10/24 • PB Simmental • ASA 4594890 • P • Tattoo 4033

HPF/Hill Uprising C104

Ruby SWC Battle Cry 431B

SO Remedy 7F

B&K Cream Soda 8D

Sandeen Donna 8302

Sandeen Donna 5120

CE	BW	WW	YW	Milk	Stay	API
13.3	-0.3	74.8	117.0	20.9	9.6	103.9

AI 4/15 to FF Burden 032H #:4090088

45

Sandeen Donna 4472

1/12/24 • PB Simmental • ASA 4594892 • P • Tattoo 4472

HPF/Hill Uprising C104

Ruby SWC Battle Cry 431B

SO Remedy 7F

B&K Cream Soda 8D

Sandeen Donna 8302

Sandeen Donna 5120

CE	BW	WW	YW	Milk	Stay	API
13.3	-0.3	74.8	117.0	20.9	9.6	103.9

AI 5/13 to Sandeen Easy Rider 3114 #:4602428

We love the disposition of these Remedy daughters. They're very easy to handle and appear as though they're going to be highly functional, practical, and useful cattle.



Lot 45



Lot 46

4288 is a forage efficient female that is built with fertility and longevity in mind. Her dam is a very fertile, great uddered Charlo cow that has out produced herself time and again. Her sire is an Exclusive son out of an 1143Y x Donna 8386 cow. Very maternal pedigree with udder quality and functionality second to none.



W/C LnL 1143Y

46

Sandeep Lady C 4288

2/23/24 • 1/2 Simmental • ASA 4607500 • P • Tattoo 4288

KCC1 Exclusive 116E

Coleman Charlo

SWC JSSC Heavy Duty 133H
Sandeep Donna 7838

Sandeep Lady Charlo 6288
Vermillion Angus 288

CE	BW	WW	YW	Milk	Stay	API
11.6	-0.1	61.2	91.0	17.7	6.6	107.3

AI 4/18 to TJ Sandhill Swag

47

Sandeep Lady 4940

3/10/24 • 1/2 Simmental • ASA Pending • P • Tattoo 4940

Mr HOC Broker

W/C Lock n Load 1143Y

Sandeep Broker 1180

Sandeep Lady 8499

Sandeep Lady 8180

Miss 499

CE	BW	WW	YW	Milk	Stay	API
-	-	-	-	-	-	-

AI 5/22 to FF Burden 032H #:4090088

4940 is a really cool made female with a unique pedigree that combines Broker with two shots of 1143Y on the Simmental side. Then OCC Emblazon and N Bar Emulation EXT for the Angus portion. Doesn't get much more maternal than that!



Lot 47



4465 is phenotypically impressive in every way! Genetically, she's sired by a full brother to the \$40,000, Sandeen Warlord. Her dam is an 1143Y daughter that traces back to a really good Jauer Angus cow that calved on time for 17 years and carried a perfect udder to the day she died.



48

Sandeen Lady J 4465

4/22/24 • 3/4 Simmental • ASA 4595842 • P • Tattoo 4465

Wheatland Man O' War

W/C Lock n Load 1143Y

Sandeen Man O War 2326

Sandeen Donna 8302

Sandeen Lady J 7465

Jauer 1020 Honesty 237

CE	BW	WW	YW	Milk	Stay	API
13.5	-0.5	62.1	86.9	21.9	8.8	97.5

AI 5/22 to GCC Night Owl

49

Sandeen/TK Donna 3829

9/2/23 • 5/8 Simmental • ASA 4602306 • P • Tattoo 3829

W/C Bankroll 811D

W/C Executive Order 8543B

W/C Bankroll 829F

EXAR Rita 5406

SLG Donna 829F

Sandeen Donna 5120

CE	BW	WW	YW	Milk	Stay	API
12.2	-0.8	77.4	118.3	20.8	11.5	121.7

AI 4/21 to TJ Sandhill Swag

A bigger, stouter fall holdover female here with a unique genetic blending, with her sire being a full Brother to the \$160,000 Bankroll daughter, shown by Sara Sullivan a few years ago, and her dam being a maternal sister to Sandeen Donna 8302. Bred up early to Sandhill Swag.





The combination of WINC All Right x Sandeen Donna 8302 offers an extra degree of performance in this bigger, stout, deep sided female. Excellent spread from birth to yearling when studying her numerical profile.



50

Sandeen Donna 4059

2/12/24 • PB Simmental • ASA 4598005 • P • Tattoo 4059

OMF Epic E27
WINC All Right 213K
WINC Hollie

Ruby SWC Battle Cry 431B
Sandeen Donna 8302
Sandeen Donna 5120

CE	BW	WW	YW	Milk	Stay	API
12.0	-1.1	76.6	116.4	24.5	13.2	120.4

AI 5/25 to Sandeen Easy Rider 3114 #:4602428

51

Sandeen Donna 4177

2/7/23 • PB Simmental • ASA 4598004 • P • Tattoo 4177

OMF Epic E27
WINC All Right 213K
WINC Hollie

Ruby SWC Battle Cry 431B
Sandeen Donna 8302
Sandeen Donna 5120

CE	BW	WW	YW	Milk	Stay	API
12.0	-1.1	76.6	116.4	24.5	13.2	120.4

AI 4/24 to FF Burden 032H #:4090088

A very stylish All Right daughter that has one of the better numerical profiles in the offering. Excellent mating to FF Burden.





Lot 52

4974 is a bold sprung, attractive female, that derives from two of the most predictable parent stock we have worked with here, in terms of producing highly functional cattle, with all the fundamentals in check.



Sandeen Donna 6386

52

Sandeen Donna 4974

2/21/24 • 3/4 Simmental • ASA 4595125 • P • Tattoo 4974

Mr TR Hammer 308A ET

Remington Lock n Load 54U

Conley GCC Shocker C19

Sandeen Donna 6386

Conley Sheza Star W32

Sandeen Donna 8386

CE	BW	WW	YW	Milk	Stay	API
11.3	-0.1	69.2	105.9	15.1	8.4	105.5

AI 5/4 to GCC Night Owl

53

Sandeen Donna 4120

2/23/23 • PB Simmental • ASA 4595126 • P • Tattoo 4120

CKCC LD Dimension 8965

Remington Lock n Load 54U

Wheatland Dimensional 1147J Sandeen Donna 6386

JPCC Miss Foxy 115F

Sandeen Donna 8386

CE	BW	WW	YW	Milk	Stay	API
7.9	1.0	76.8	118.7	19.1	12.2	111.9

AI 5/23 to GCC Night Owl

A nice baldy female from the Dimensional x Donna 6386 cross. High probability her first calf by GCC Night Owl will cover her initial investment.



Lot 53



Lot 54

A very practical type half-blood Dimensional daughter from a McCumber Bred cow, due to Easy Rider the first part of March.

54

Sandeen Lady D 4000

2/20/24 • 1/2 Simmental • ASA 4607382 • P • Tattoo 4000

CKCC LD Dimension 8965

McCumber Angus

Wheatland Dimensional 1147J Miss Bohl 1000K

JPCC Miss Foxy 115F

McCumber Angus

CE	BW	WW	YW	Milk	Stay	API
7.8	2.4	83.3	128.4	21.1	12.7	105.5

AI 5/28 to Sandeen Easy Rider 3114 #:4602428

55

Sandeen Lady D 4001

9/20/23 • 1/2 Simmental • ASA 4607332 • P • Tattoo 4001

CKCC LD Dimension 8965

McCumber Angus

Wheatland Dimensional 1147J Miss Bohl 1001K

JPCC Miss Foxy 115F

McCumber Angus

CE	BW	WW	YW	Milk	Stay	API
7.8	2.4	83.3	128.4	21.1	12.7	105.5

AI 4/7 to FF Burden 032H #:4090088

If you like them big, burly, and stout, this is your girl! Due a month after sale day to FF Burden for a quick return on your investment.



Lot 55



Lot 56

Sandeen Lady D 4512

56

9/22/23 • 1/2 Simmental • ASA 4607334 • P • Tattoo 4512

CKCC LD Dimension 8965

McCumber Angus

Wheatland Dimensional 1147J Miss Bohl 1512K

JPCC Miss Foxy 115F

McCumber Angus

CE	BW	WW	YW	Milk	Stay	API
7.8	2.4	83.3	128.4	21.1	12.7	105.5

AI 5/8 to FF Burden 032H #:4090088

4512 is a big, stout, massive SimAngus female that is built to raise those highly marketable percentage bulls all day long! These half-blood Dimensional daughters are out of dams that we purchased as the top set of females from the McCumber Angus customer appreciation sale a few years ago, and they have developed into really good cows!



Wheatland Dimensional 1147J



FF Burden 032H



Lot 57

The only member of the Loaded Lady family in the female division of the offering this year. She certainly has some similarities to those that have come before her that have topped the market. The Shocker x 6025 cross has consistently been stouter featured with more body, bone, and foot than most, and 4109 follows suit. A very special female from one of our most consistent producing cow families.



Sandeen Loaded Lady 6025

57

Sandeen Loaded Lady 4109

2/25/24 • PB Simmental • ASA 4598009 • P • Tattoo 4109

Mr TR Hammer 308A ET

Remington Lock n Load

Conley GCC Shocker C19 Sandeen Loaded Lady 6025
Conley Sheza Star W32 Sandeen Lady 3025

CE	BW	WW	YW	Milk	Stay	API
9.7	3.0	81.1	129.1	14.5	7.4	104.2

AI 5/29 to Sandeen Easy Rider 3114 #:4602428

58

Sandeen Lady D 4003

2/22/24 • 1/2 Simmental • ASA 4607330 • P • Tattoo 4003

CKCC LD Dimension 8965

McCumber Angus

Wheatland Dimensional 1147J Miss Bohl 1003K

JPCC Miss Foxy 115F

McCumber Angus

CE	BW	WW	YW	Milk	Stay	API
7.8	2.4	83.3	128.4	21.1	12.7	105.5

AI 6/18 to Sandeen Easy Rider 3114 #:4602428

The final half-blood Dimensional of the offering in this deep sided, angularly designed female. Due in March to the calving ease sire with the Donna influenced, Sandeen Easy Rider.



Lot 58



Lot 59

The Lover Boy daughters have been making phenomenal cows. This one is out of an absolutely gorgeous Shocker daughter that we purchased from the G-Ranch in Oklahoma.



TJ Sandhill Swag

59

Sandeen Lady 4159

1/22/24 • 5/8 Simmental • ASA 4595840 • P • Tattoo 4159

HTP/SVF Duracell T52

Conley GCC Shocker

THSF Lover Boy B33

GCC Eisa H159

RP/MP Right to Love 015

GCC ETR Eisa Z683

CE	BW	WW	YW	Milk	Stay	API
12.2	0.1	77.0	112.9	25.3	7.9	116.9

AI 4/17 to TJ Sandhill Swag

60

VPF Doubles

3/22/24 • PB Simmental • ASA 4419280 • P • Tattoo M62

W/C Double Down

W/C Relentless 32C

WHF/JS/CCS Double Up

VPF Margarita K62

WHF Summer 365C

AJE Margarita W62

CE	BW	WW	YW	Milk	Stay	API
10.4	2.3	74.1	97.7	17.7	10.1	102.2





AI 5/22 to TJ Sandhill Swag

The Double Up cattle have been very popular the last few years. This one is extremely gentle and halter broke. Look forward to her Sandhill Swag calf coming the end of February.



Lot 60

ANIMAL Health CENTER

Albia  Oskaloosa  Knoxville  Ottumwa  Centerville

**TITAN
WEST INC**
Livestock Handling Equipment

Sandeen Livestock Equipment Sales Featuring Titan West Livestock Handling Equipment

We recently purchased a dealership for Titan West Livestock Equipment. We have used their equipment in our own operation for nearly 30 years and in our minds it is, quite simply the best in terms of combining a superior design, brute strength, and a user friendly product.

Contact Scott Sandeen for all your needs 641-777-9153





Lot 61



Sandeen Donna 1316

61

Sandeen Genoa 4132

3/15/24 • PB Simmental • ASA Pending • P • Tattoo 4132

W/C Bet on Red 481H

W/C Relentless 32C

GCC Genoa 2118K

Sandeen Donna 1316

JS Black Satin 9B

Sandeen Donna 8405

CE	BW	WW	YW	Milk	Stay	API
9.5	2.4	71.4	104.7	22.0	11.0	104.7

BW 92#



Timoteo

\$52,500 Full Sibling

There's a lot of good in this Genoa x Donna 1316 son! Study this bull at the ground, then work your way up. Big feet, big legs, and big scrotal. His full brother that sold to Triple G Livestock for \$52,500 last year, froze IVF quality semen at 11 months of age. Fertility is not a fluke. It's bred in... for generations. Genetically this bull's pedigree is saturated with the maternal potency of Sandeen Donna 1316, Sandeen Donna 8405, Sandeen Donna 8386, JS Black Satin 9B (Boots), and 4-shots of Miss Werning KP 8543U. Considering that, along with his phenotypic attributes, I don't think it would be unreasonable to believe this bull would be of the caliber necessary to service a set of registered cows for any progressive breeder.

You won't have to sacrifice Marbling or Meat Quality using maternal genetics on your herd, that is one of the biggest misconceptions in the industry today. These steaks are off steers raised right here at Sandeen Genetics!





62

Sandeen LnL 4828

3/10/24 • 1/2 Simmental • ASA Pending • P • Tattoo 4828

Remington Lock n Load 54U

Coleman Charlo

W/C Lock n Load 1143Y

Miss Charlo 6281

Aubreys Black Blaze III

Vermillion Angus 281

CE	BW	WW	YW	Milk	Stay	API
7.9	1.0	76.8	118.7	19.1	12.2	111.9

BW 84#

63

Sandeen LnL 4467

3/10/24 • 1/2 Simmental • ASA Pending • P • Tattoo 4467

Remington Lock n Load 54U

Coleman Charlo

W/C Lock n Load 1143Y

Miss Charlo 6281

Aubreys Black Blaze III

Vermillion Angus 281

CE	BW	WW	YW	Milk	Stay	API
7.9	1.0	76.8	118.7	19.1	12.2	111.9

BW 82#

4828 & 4467:

This pair of brothers are the epitome of what the beef business is about! Their lineage has produced the most consistent set of commercial beef bulls we've ever sold. They're easy to market because they're easy on the eyes and all the fundamentals are in check. They're big scrotaled, big bodied, thick ended bulls that travel easy and do their job. Sell heavy steers and keep every heifer and you'll be a happy rancher!





Lot 64

We don't raise many red ones here, so if you see one that's made the sale, know that they've jumped through all the hoops to get there. This is a really good rugged, sound, functional bull. But his pedigree is maybe most intriguing. A good natured Broker son by what is becoming one of our favorite cows in the donor pen, Sandeen Donna 1249.



Sandeen Donna 1249

64

Sandeen Broker 4249

2/19/24 • PB Simmental • ASA 4595162 • P • Tattoo 4249

SVF Steel Force S701

W/C Relentless 32C

Mr HOC Broker

JM BF H25

Sandeen Donna 1249

Sandeen Donna 8405

CE	BW	WW	YW	Milk	Stay	API
7.8	1.9	68.7	98.1	18.3	10.7	98.3

BW 84#

65

Sandeen Double Up 4618

2/10/24 • PB Simmental • ASA 4595163 • P • Tattoo 4618

W/C Double Down

Conley GCC Shocker

WHF/JS/CCS Double Up

WHF Summer 365C

Sandeen Loaded Lady 2618

Sandeen Loaded Lady 6025

CE	BW	WW	YW	Milk	Stay	API
10.8	1.1	78.8	114.4	15.9	8.9	102.6

BW 72#

4618 was born un-assisted to a really good first calf heifer. He will offer some length and some growth, but perhaps most importantly add some docility. My wife feeds the bulls every day and she tells me, this is one of the tamest ones in the pen!



Lot 65



Lot 66



Sandeen Donna 1316



JS Black Satin 9B

**66A-
66E**

Sandeen Timoteo 4462

PB Simmental • ASA 4431578 • P

W/C Bet on Red 481H

W/C Relentless 32C

GCC Genoa 2118K

JS Black Satin 9B

Sandeen Donna 1316

Sandeen Donna 8405

CE	BW	WW	YW	Milk	Stay	API
9.5	2.4	71.4	104.7	22.0	11.0	104.7

Packages of 10 units Conventional Semen



Timoteo 4462

- The testosterone has obviously taken hold of that cool, hairy calf that commanded \$52,500 in last years "Buildin' a Brand" sale! He has developed into a masculine, muscular, big legged, large testicled specimen that is truly impressive to view. This bull has some shape and some power, yet still has the long, clean front one-third. He would truly complement some of the modern day show cattle, by adding some power and substance without sacrificing the hair and the look.
- As would be expected from a Sandeen Donna 1316 descendant, the fertility was exceptional in this young stud! Freezing IVF quality semen at 11 months of age. With the technological advancements in reverse sorted semen, it's getting difficult to find a new semen sire that has the stacked genetics of the really proven cow families in the Simmental industry. Timoteo lines up Sandeen Donna 1316, JS Black Satin 9B (Boots), and Miss Werning KP 8543U. That's three highly potent breed matrons, up close in the pedigree to more confidently secure the fact that Sandeen Timoteo 4462 will deliver some very positive attributes to the next generation of Simmental seedstock.
- Offering 50 units of conventional semen to sell in packages of 10 units per lot. Semen is available for pickup sale weekend or can be picked up at Nichols Cryo-Genetics.



\$100

Wheatland Dimensional 1147J - #: 4135052



\$50

Wheatland Milo - Right Now x W/C Ms Angel 2870Z



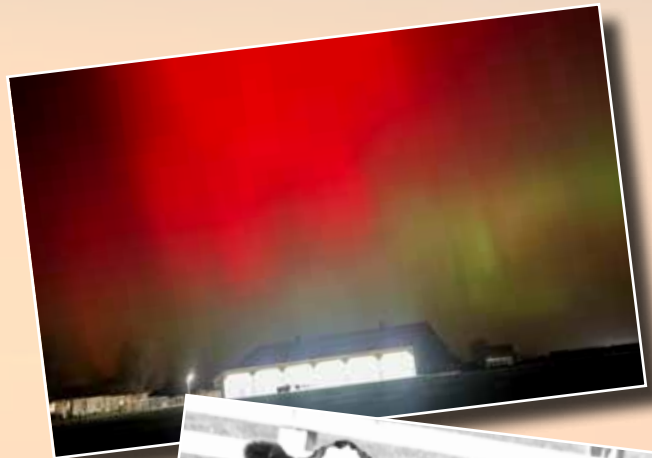
\$100

W/C Lock n Load 1143Y - #: 2684560



\$100

FF Burden 032H - #: 4090088



SALE WEEK SEMEN SPECIALS!!

Bring your tank when you come to view the stock and bring your favorite sire group home with you.

Contact Scott to set up settlement and transfer! If you are looking for large packages please contact Scott to ensure we have your order on hand!

Terms & Conditions...

Health: All animals will be eligible for interstate shipment unless otherwise announced. Health papers will be furnished for each animal over 6 months of age.

Embryos: Guarantee one pregnancy per package on each lot of embryos sold, if work is done by certified embryologist. All shipping costs are the responsibility of the buyer.

Terms & Conditions: Terms of sales will be cash, good check, or Mastercard or Visa payment. If a credit card is used a 3% service fee will be applied to purchase. All statements made from the auction block will take precedence over materials printed in this catalog. Cattle sell via the terms and conditions set forth by the American Simmental Association.

Registration Papers: Please leave all transfer instructions with the sale clerks at the conclusion of the sale.

Pregnancy Information: All of the bred females in this offering have been pregnancy checked and confirmed pregnant to the dates listed in this catalog. Buyers have 21 days to re-pregnancy check females purchased in order to confirm these dates. Please contact seller as soon as possible if any issues are found.

Accidents: Although every precaution will be taken to protect the safety and comfort of the buyers and those attending the sale, the seller, sale management, and all associated with the sale and its facility do not assume any responsibility for injury, theft, accident, or loss of property.

Trucking: Assistance will be given in making shipment after the sale, but no risk will be assumed by the seller. Expenses incurred are the responsibility of the purchaser who should furnish instructions at the time of settlement.



Watch the Sale on CCI.live!

*The best, the fastest and most
comprehensive marketing & bidding tool!*

How to Bid Online...

- As a **buyer**, you DO NOT need to login to watch the sale but you must have a validated account to bid.

To **BID ONLINE** go to www.CCI.live in your **Chrome, Firefox, Safari** or other modern browser:

- 1) Click on the **sale schedule page**. 2) Click on the **sale of interest**.
- 3) Click on **Bid Online- Register** and then **Get Buyer Number**

- After you are logged in, you must proceed to the sale page for your auction and click **Bid Online - Register**, then **"Get Buyer Number."** Some auctions require valid credit card number on file to obtain a buyer number to bid.

- CCI.live will operate with ease on a modern **cellular device, laptop, desktop or tablet**.
- A **current browser** is important and will always make your experience better.

- **For successful bidding you must have good Internet service!** It is very important to be stationary if bidding. If you are driving and bidding, expect to have some service issues. If you are stationary on a good device, with healthy Internet, expect a very successful bidding environment. If you have slow Internet watch the "asking price" on the screen, it is real time, and refresh your browser if you feel like you have some lag.

- **Support line open during all sales. TEXT 405-400-9505** - Please alert the ranch for your hauling preferences.



Dwyer Cattle
740 26th Street
Roseville IL 61473

Sandeen Genetics
PRESENTS

**BUILDIN' A BRAND
PRODUCTION SALE 2025**

Your Simmental Source for Maternally Proficient Genetics