

SCHAEFFER-TICE SHOW CATTLE

# CHRISTMAS COLLECTION

DECEMBER  
21

3:00 P.M. EST

SCHAEFFER  
SALE FACILITY  
IN  
HAGERSTOWN,  
INDIANA





# SCHEDULE OF EVENTS

**DECEMBER 20, 2025** 9:00 AM – 5:00 PM EST SALE CATTLE AVAILABLE FOR VIEWING

**DECEMBER 21, 2025** 9:00 AM EST SALE CATTLE AVAILABLE FOR VIEWING

1:00 PM EST Lunch Served || 3:00 PM EST SCHAEFFER-TICE SHOW CATTLE “CHRISTMAS COLLECTION” SALE BEGINS

**MAKE PLANS TO JOIN US FOR HOSPITALITY  
& LIVE ENTERTAINMENT FOLLOWING THE SALE!**

## SALE DAY CONTACTS

Tim Schaeffer.....(765) 541-0738  
Nate Tice.....(717) 926-0874  
Ian McKenzie.....(217) 851-2155  
Quinton Ball.....(309) 582-6826

## SALE MANAGEMENT

Innovation AgMarketing, LLC  
Graham Blagg.....(530) 913-6418  
Tim Anderson.....(605) 682-9343

## AUCTIONEER

Col. Jered Shipman.....(806) 983-7226

## MARKETING AGENTS

Dave Guyer.....(812) 253-1676  
Tyler Humphrey.....(419) 230-3450  
Cody Sankey.....(517) 749-5556  
Brent Tolle.....(502) 905-7831  
Craig Meyer.....(812) 525-3428

## RING STAFF

Mitchell Armitage.....(405) 641-9438  
*Special Assignment*  
Kent Jaecke.....(405) 408-2440  
*Special Assignment*  
Austin Brandt.....(712) 621-1829  
*Lee AgriMedia*

## ONLINE BIDDING



Visit [cci.live](http://cci.live) to bid online

## SALE LOCATION

14622 Crull Road | Hagerstown, IN 47346

## TRUCKING

Scott Minges.....(513) 616-8499  
Dick Coleman.....(765) 461-0954

## PHOTOS & VIDEOS

Kayla Sweeney.....(937) 206-4535

## CATALOG DESIGN

Megan Favorite.....(580) 770-1302

## TERMS & CONDITIONS

All lots sell in accordance with the suggested guidelines of their respective breed association. Announcements made sale day from the block during the sale take precedence over printed material in this catalog. Payment will be accepted in the form of cash, cashier's check, or check. All cattle must be paid for prior to release. All funds are to be paid to Innovation AgMarketing, LLC in U.S. currency. No cattle will be transferred, delivered, or released without full payment. In the event you need expedited registration paper transfers please make plans to pay in full on sale day. All sales are final.

## ANNOUNCEMENTS

A supplement sheet will be available sale day with updated information, corrections and additional information. This sheet and any announcements made sale day and from the auction block during the sale will take precedence over printed material associated with this sale.

## LIABILITY

Schaeffer Show Cattle, Innovation AgMarketing, LLC, and authorized sale personnel assume NO liability for injury, accident, or damage to persons or personal property. All persons who attend the sale do so at their own risk.

*I*  
**INNOVATION**  
— AgMarketing, LLC —





**SCHAEFFER**  
**TICE**  
- show cattle -



# WELCOME

Welcome to the 2025 Edition of the Christmas Collection!

It is with great excitement that we present one of the deepest and most dynamic offerings to date, featuring bred heifers, proven donors, and open show heifers from one of the most established and respected outfits in the country. We are also thrilled to offer the rare opportunity to purchase 50% semen interest in the many-time National Champion TSSC BT Limit Up 1099J. In addition, several cornerstone members of the powerful multi-breed donor arsenal will be made available, and Braylen Schaeffer has elected to offer 50% embryo interest in his many-time National Champion ChiAngus heifer, Coor Diamond 403M.

Tim Schaeffer and Nate Tice are shining examples of what junior breed associations can do to shape one's future. Over the years, these two gentlemen have built an empire that requires little introduction within both the junior beef sector and the seedstock business. Their program has produced countless champions at the Oklahoma City, Kansas City, Louisville, Denver, Junior National, State Fair, and County Fair levels for nearly two decades. To say the Pennsylvania-born duo has dominated the industry would be an understatement—their influence in the tan bark arenas and on the green shavings is nothing short of commanding. Through significant investment, hard work, strategic alliances, and lasting friendships, they have continued to elevate their presence across multiple breeds. Beyond their show ring success, they have also made major strides in the bull business—owning, breeding, and promoting some of the most elite AI sires in the industry.

This offering is backed by some of the most dynamic and decorated pedigrees in the business. The females selling are sired by past National Champions, out of National Champion dams, are National Champions themselves, or have already raised National Champions. There are numerous opportunities to invest in the future of your breeding program, but the truly unique advantage lies in the ability to align with the marketing power synonymous with the Schaeffer-Tice brand. We firmly believe in the exceptional after-sale service provided by Tim Schaeffer and his first-class team in Hagerstown, Indiana.

Ladies and gentlemen, it is our honor to welcome you to Christmas Collection Vol. III on Sunday, December 21, 2025, in the state-of-the-art sale pavilion at Schaeffer Show Cattle in Hagerstown, Indiana. If you need any assistance or have questions about the offering, we encourage you to contact any member of the Schaeffer-Tice team or the Innovation AgMarketing crew.

We pray that everyone has a safe and joyful holiday season. Merry Christmas and a Happy, Prosperous New Year to all!

*Graham Blagg    Jered Shipman    Tim Anderson*

## ENJOY THE CATTLE



TSSC BT LIMIT UP 1099J ET  
2022 NAILE Grand Champion Shorthorn Plus Bull



TSSC BT LIMIT UP 1099J ET  
2022 Cattlemen's Congress  
Reserve Supreme Champion Bull



SULL DREAM ON 5158 ET  
\$1 Million+ Producing Dam of  
TSS BT Limit Up 1099J ET

## TSSC BT LIMIT UP 1099J ET

SHORTHORN PLUS | ASA: AR4325648 | DOB: 3/17/21

EXAR BLUE CHIP 1877B

**CONLEY NO LIMIT**

SILVEIRAS S SIS SANDY 2355



SULL RIGHT DIRECTION ET

**SULL DREAM ON 5158 ET**

SS DREAM LADY 161 ET

We are proud to offer the opportunity to purchase one of the most versatile and consistently generating AI sires in our arsenal. TSSC BT Limit Up 1099J ET is the multiple-time National Champion Shorthorn Plus bull that had the business talking every time he stepped into the show ring. The two-time NAILE, two-time Cattlemen's Congress, and KILE Champion is a massive-footed, rugged-built beef bull with the added look and presence needed to inject quality into future generations. He was praised for his athleticism, shape, and real-world performance and, as a sire, has proven to transmit this same quality, becoming a reliable source of beef business excellence. He is a full brother to the 2022 NAILE Grand Champion Junior Shorthorn Plus Heifer campaigned by Houston Ferree, resulting from an embryo purchase made by Cates Farms. She highlighted the Cates Farms Star Search XX Sale, commanding \$140,000. The dam of TSSC BT Limit Up 1099J ET needs little introduction to the show cattle business, as SULL Dream On 5158 ET was not only a multiple-time champion herself, but has consistently generated them too—recording well over a million dollars in lifetime revenue. As the business continues to trend toward dual-registered and composite show heifer divisions, it is AI sires with wide breed composition and versatility that are most in demand. TSSC BT Limit Up 1099J ET has proven his generating abilities with multiple high sellers for firms across the nation. In fact, both the Division I Champion and Reserve Champion Shorthorn Plus Females at the 2025 North American were daughters of 1099J, raised by Smith Family Farms and Meyer Family Shorthorns respectively. The demand is only growing, and the potential return on investment is strong—don't miss the boat on an opportunity with serious reward.

## 50% SEMEN INTEREST & FULL POSSESSION SELLS!





SCC PHYLLIS 052  
Dam of Lot 1



## SCC SCH TSSC PHYLLIS 8422

ANGUS | AAA: 19604165 | DOB: 4/13/18

DAMERON FIRST CLASS  
**COLBURN PRIMO 5153**  
SILVEIRAS SARAS DREAM 1339



OSU CURRENCY 8173  
**SCC PHYLLIS 052**  
SCC PHYLLIS 682

SCC SCH TSSC Phyllis 8422 presents the opportunity to buy from the leading edge of the Angus donor pen in Hagerstown. She has proven to be a consistent producer of high-end Angus seedstock and show stock, generating multiple females over \$25,000 including one at \$70,000, along with Braelyn's 2024 Calf Champion from both Keystone and the American Royal, sired by KR Casino 6243. Her dam, SCC Phyllis 052, is the cornerstone matron for Stertzbach Cattle Company and is a full sister to SCC Phyllis 051—one of the most legendary females in the Angus breed. Phyllis 8422 is a maternal sister to SCC SCH Phyllis 6104, the dam of STAG Good Times 210 ET and the 2021 American Royal Reserve Grand Champion Angus Heifer shown by Rob Oakley of Tennessee. If you are looking to make a splash in the Angus ring or to secure a dynamic breeding piece with the credentials to create high-caliber composite show heifers across breeds, this already proven donor female is a high-speed capsule toward your goals. The Phyllis line has a commanding presence at the forefront of the Angus business—they are simply built different and continue to elevate themselves above the competition.

DUE 2/6/26 TO STYLES RESET E016



## TSSC PROVEN QUEEN 2002

ANGUS | AAA: 21391260 | DOB: 3/10/22

CFCC BLACK JACK 001

**KR CASINO 6243**

MALSONS SAVANNAH 27Y



SCC FIRST-N-GOAL GAF 114

**FCF PROVEN QUEEN 419**

FCF SCC PVF PROVEN QUEEN 615

The pedigree of TSSC Proven Queen 2002 sets the stage for a tremendous production story, as she combines two of the most potent sources of elite Angus seedstock from the past decade. Her pedigree represents a synergy that is impossible to recreate, making her a standout from both an investment and Angus-pedigree collector's standpoint. Being a direct daughter of the legendary FCF Proven Queen 419 places this female in elite company. Maternal siblings include the industry-leading sire SCC SCH 24 Karat 838; the FWSS Champion and dam of the 2024 NWSS Grand Champion Angus Female, MLA Proven Queen 803; and the RJ Cattle leading donor CF Proven Queen 138J. There are banners hanging on the walls of many of the nation's best show families because of the outlier quality stemming from this cow family. This female carries that same promise.

**OPEN & READY FOR EMBRYO PRODUCTION**



FCF PROVEN QUEEN 419  
Legendary Dam of Lot 2



SCC SCH 24 KARAT 838  
Iconic Angus AI Sire &  
Maternal Brother to Lot 2





MLA PROVEN QUEEN 2135  
Prolific Dam of Lot 3



PSSC TSSC PROVEN QUEEN 4419  
\$40,000 Maternal Sister to Lot 3



## TSSC PROVEN QUEEN 4099

ANGUS | AAA: 21395638 | DOB: 4/10/24

CFCC BLACK JACK 001

**KR CASINO 6243**

MALSONS SAVANNAH 27Y



CONLEY NO LIMIT

**MLA PROVEN QUEEN 2135**

FCF PROVEN QUEEN 419

Here is a  $\frac{3}{4}$  sister to TSSC Proven Queen 2002, offering an extra shot of maternal strength and generating potential through the inclusion of Conley No Limit in her pedigree via the magnificent MLA Proven Queen 2135 donor—an elite female headed toward stardom in short order. She was the Grand Champion Angus Female at the 2022 Keystone International Livestock Expo and is one of the most impressive specimens you could hope to find. 2135 has launched her production career with tremendous success, generating multiple high sellers not only for our program but also for Pembroke, Lafrentz, and Sweeny. This cow family is trending upward and will remain a key focus going forward. Get in on the cutting edge of our Angus program.

DUE 3/1/26 TO SPEED LIMIT





SILVEIRAS SARAS DREAM 1339  
Legendary Maternal Granddam of Lot 4



COLBURN PRIMO 5153  
Popular Angus AI Sire & Maternal Brother to Dam of Lot 4



## SULL SARA'S DREAM 4152M

ANGUS | AAA: 21417848 | DOB: 2/5/24

CFCC BLACK JACK 001

**KR CASINO 6243**

MALSONS SAVANNAH 27Y



C&C MCKINLEY 3000 EXAR

**COLBURN SARAS DREAM 6758**

SILVEIRAS SARAS DREAM 1339

There may not be a more decorated Angus cow family than the Sara's Dream dynasty. Generations of the maternal lineage that built 4152M are recognizable for their contributions to both the high sellers lists and the banners hanging on the walls of many of the nation's finest Angus outfits. The maternal granddam of 4152M, Silveiras Saras Dream 1339, has etched her name among the most potent females to be donned with an AAA registration number, being the dam of Colburn Primo 5153, one of the most influential sires in the Angus breed for nearly a decade, and Austin Nowatzke's American Royal Supreme Champion, Colburn Sara's Dream 5116. She was also the 2016 NJAS Grand Champion Owned Heifer, the 2016 NAILE Grand Champion Angus Heifer, and the 2017 NWSS Grand Champion Angus Heifer, among many other victories. She is also the dam of BNWZ Dignity 8017. The dam of 4152M, Colburn Saras Dream 6758, has been a stronghold leader of the Sullivan Farms Angus donor pen, also mating with success to Simmental sires, and always proving her versatility with every new mating. There is no question about the impact that KR Casino 6243 has made on the Angus business—not just as a sire of champions, but now especially because of the incredible daughters he has generated that are raising the most elite show heifers every sale season. The pedigree here aligns all the major players in the Angus business; you cannot question whether she has the pedigree to generate dollars!

DUE 2/15/26 TO SPEED LIMIT





UDE ELLIE 9230  
2020 NAILE Grand Champion Angus Heifer  
Dam of Lot 5

Here we have a direct daughter of Sara Sullivan's 2020 NJAS Grand Champion Owned Heifer and 2020 NAILE Grand Champion Junior Angus Heifer, UDE Ellie 9230. UDE Ellie 9230 is emerging as a leader of the pack from the SULL branded Angus program, with multiple maternal sisters to 4341M commanding over \$200,000 over the past three years. Not only do they find high-dollar valuations, but they also win on the biggest stages and find homes with the most successful show families in the country. This Colburn Primo 5153 daughter is a full sister to the \$40,000 SULL Ellie 4562M, who was Josie Phillips' Champion Division II Female at the 2025 Cattlemen's Congress and Supreme Champion Female at the 2025 Kentucky Beef Expo.

SERVICED 11/5/25 TO PVF BLACKLIST 7077

## SULL ELLIE 4341M

ANGUS | AAA: 21404915 | DOB: 3/6/24

DAMERON FIRST CLASS  
**COLBURN PRIMO 5153**  
SILVEIRAS SARAS DREAM 1339



EXAR BLUE CHIP 1877B  
**UDE ELLIE 9230**  
SLL ELLIE 2201



KCC GTC MS MALIBU 107M  
2025 Cattlemen's Congress Division V  
Champion Angus Heifer Full Sister to Lot 6

KCC Ace of Hearts 325M is a SCC SCH 24 Karat 838 daughter that is a full sister to the Hendrickson family's \$67,000 2025 Cattlemen's Congress Division V Champion Angus Heifer, KCC GTC Ms Malibu 107M. The dam of these females, KBIC KCC Ace of Hearts 110, works for the Kinna program and is also the dam of Harper Henny's Reserve Supreme Champion Female at the 2023 Indiana State Fair Junior Show. She is long and eloquent in her build, yet still wows you with her density and body volume, being deep in her underline and round in her upper ribcage. She ties together all her powerful pieces with a very balanced and complete profile, and we think she will make an awesome brood matron.

SERVICED 12/1/25 BY STYLES RESET E016



## KCC ACE OF HEARTS 325M

ANGUS | AAA: 21418574 | DOB: 3/20/24

SCC TRADITION OF 24  
**SCC SCH 24 KARAT 838**  
FCF PROVEN QUEEN 419



SILVEIRAS STYLE 9303  
**KBIC KCC ACE OF HEARTS 110**  
PC BAND OF HEARTS



## ALB BOY JUWANDA 132J PLD ET

CHAROLAIS | AICA: F1312468 | DOB: 2/15/21

CCC WC LEGISLATOR 5119 P ET

**JVS LONG SNAPPER F39**

JVS MS ROCKET B67

TR MR DIABLO 2742Z ET

**BOY MMM MONTELLA 956G**

BOY BSMT MONTELLA MARIE 623 ET

The white division is bringing the heat again for 2025. This young donor candidate offers a fresh pedigree to many breed enthusiasts and becomes even more intriguing when you realize she is a maternal sister to the \$215,000 BOY AALB White Snake 400M—one of the most talked-about sires in the breed, who was bred to some of the most elite donor females in 2025. This sire group is being met with tremendous anticipation heading into calving season. The BOY MMM Montella 956G donor sets the gold standard for productive females with superior udder quality, structural design, and fleshing ability. This is a female that you can build a cow family around.

DUE 1/1/26 TO BOY OUTLIER 812 ET PLD



BOY MMM MONTELLA 956G

Dam of Lot 7



BOY AALB MONTELLA 410M

\$76,500 Maternal Sister to Lot 7



BOY AALB WHITE SNAKE 400M

\$215,000 Maternal Brother to Lot 7





## SLIK MARY 151

CHAROLAIS | AICA: F1314296 | DOB: 4/2/21

LT RUSHMORE 8060 PLD

**CCC WC RESOURCE 417 P**

WC CCC BLUE GIRL 1528 P



M&M OUTSIDER 4003 PLD

**BOY MARILYN MONROE**

TR MS TURTON 3557A

Regardless of breed, you can expect to find top-tier phenotype and cow power in Hagerstown. SLIK Mary 151 is a stout-featured, rugged-built CCC WC Resource 417 P daughter out of the 2020 AIJCA Grand Champion Owned Female BOY Marilyn Monroe—a dominant champion for Jackie Sleichter and a full sister to Braelyn's 2021 NAILE Grand Champion Female BOY Sherri 088 PLD. A maternal sister to 151, sired by WR Relief J4606, was the \$66,500 high-selling feature of the 2024 "Major League" Female Sale for the Ward family. Again in 2025, the Rosebud program marketed a pair of BOY Marilyn Monroe daughters that attracted elite attention. This cow family simply does not miss.

DUE 12/10/25 TO BOY OUTLIER 812 ET PLD



BOY MARILYN MONROE  
2020 AIJCA Grand Champion Charolais Heifer  
Dam of Lot 8

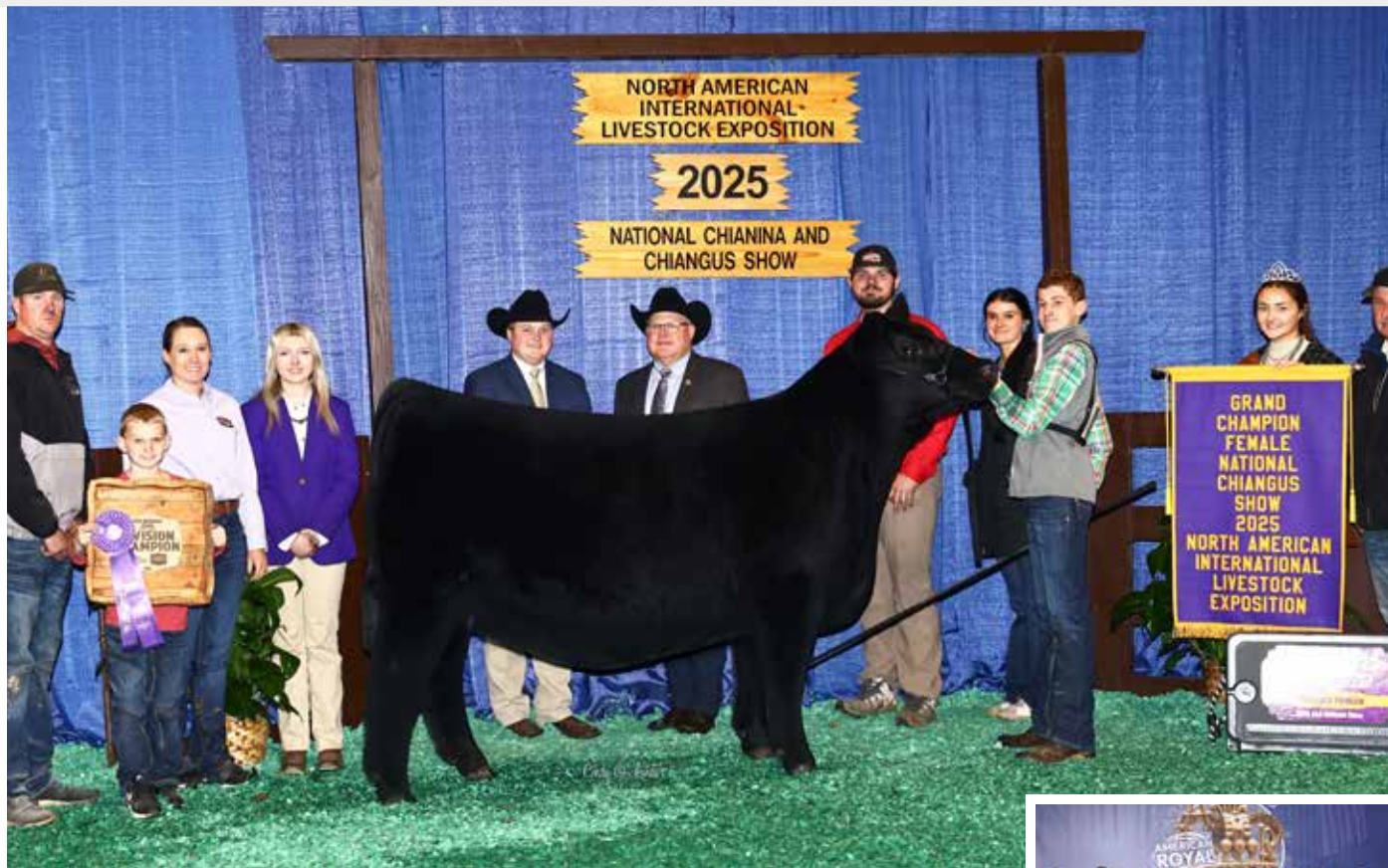


BOY MARILYN MONROE  
2021 Cattlemen's Congress  
Reserve Grand Champion Charolais Heifer



SLIK MARILYN 15M  
\$66,500 Maternal sister to Lot 8





COOR DIAMOND 403M  
2025 NAILE Grand Champion Chiangus Heifer



## COOR DIAMOND 403M

CHIANGUS | ACA: 423835 | DOB: 4/7/24

SSF ON POINT 4028  
**ROSE MC ENCORE 0463**  
BURNS ELBA 1454



BMW ONSET  
**HF DIAMOND 22H ET**  
ARD RIDGE DIAMOND GIRL 22B

There is no doubt that when Tim gets fired up about a female, he is going to make her a household name, and the next female on the rise for the Schaeffer program is COOR Diamond 403M, most likely Braylen's most dominant show heifer to date! She lays claim to the titles of 2025 National Junior Heifer Show Grand Champion Chiangus Heifer, 2025 American Royal Grand Champion Chiangus Heifer, and 2025 NAILE Grand Champion Chiangus Heifer. To say that she has been tough to get around this past year would be an understatement—she has truly been an absolute force to be reckoned with. This ROSE MC Encore 0463 daughter has been praised by astute stockmen for her incredible level of athleticism, overall balance of kind, and absolutely elite level of conformation and skeletal quality—the type and kind that we as show heifer breeders keep striving to create. We think she is set to cornerstone an incredible cow family and anchor not just the Chiangus program in Hagerstown, but also serve as a centerpiece for various directions of multibreed show heifer production. People are always asking, “Let me know when you find that next cash cow; we want to get in!” Well, here she is, being served up on a silver platter. The momentum has already been built, the eyes are on her, and the expectations are high—yet legitimate. COOR Diamond 403M offers herself as a blue-level investment opportunity for a program ready to surge to the top.

DUE 1/7/26 TO BNWZ DATA BANK 1311C ET

## 50% EMBRYO INTEREST SELLS!



COOR DIAMOND 403M  
2025 American Royal  
Grand Champion Chiangus Heifer



COOR DIAMOND 403M  
2025 National Junior Heifer Show  
Grand Champion Chiangus Heifer





JSUL WHO DAT SULTRY 6215D ET  
2017 NAILE Grand Champion Chianina Heifer



JSUL WHO DAT SULTRY 6215D ET  
2017 KILE Gand Champion Chianina Heifer



S&S BCII SUGAR AND SPICE  
2023 IL State Fair 4th Overall  
Junior Breeding Heifer  
Daughter of Lot 10

10

## JSUL WHO DAY SULTRY 6215D ET

13% CHIANINA | ACA: 383665 | DOB: 2/4/16

WHO MADE WHO 411F  
**ASHW WHO DA MAN**  
ASHW CA X MAX SM 55



BHCS HEAT SEEKER 23  
**JSUL WHO DAT SULTRY 6215D ET**  
JSUL MA X AN 6651

JSUL Who Dat Sultry 6215D ET was crowned the 2017 ACA National Champion Female at the North American, Supreme Champion Female of the Keystone International Livestock Exposition, and Reserve Supreme Champion Breeding Heifer of the Indiana State Fair. To this day she remains one of the most incredible show heifers to ever pass through our barns and is perhaps the most uniquely built daughter of the iconic ASHW Who Da Man ever born. In production she has recently stirred excitement as well, with a SCC SCH 24 Karat 838-sired daughter of 6215D being shown by the Yocham family. TSSC BT Sultry's Storm ET garnered a swath of division championships at national shows throughout her career and was the 2023-24 Senior Heifer Calf Division All-American Chianina Female of the Year. Another SCC SCH 24 Karat 838 daughter was campaigned to multiple Supreme Champion honors by the Wyatt Baker family. In 2022 a flush of daughters sired by W/C Relentless 32C took the business by storm with countless high sellers and champions resulting from this prolific mating. S&S BCII Sugar And Spice was the 2023 AJSA National Classic 9th Overall Percentage Simmental Heifer for Breckyn Bloomberg. She was later selected as the 2023 IL State Fair 4th Overall Junior Breeding Heifer! Nobody can question the impact that the daughters of the ASHW Who Da Man have made on the show cattle business, and every breeder serious about competing on the front end should find room for one—or a whole herd full of them. This is a blue-chip level investment opportunity from the heart of the program!

OPEN & READY FOR EMBRYO PRODUCTION



11

## JSUL SASSY SULTRY 7013E

13% CHIANINA | ACA: 394608 | DOB: 1/4/17

WHO MADE WHO 411F  
**ASHW WHO DA MAN**  
ASHW CA X MA X SM 55



BHCS HEAT SEEKER 23  
**SSUL SULTRY 6640-2**  
JSUL MA X AN 6651



12

## JSUL WHO DA SULTRY 7800E ET

13% CHIANINA | ACA: 406683 | DOB: 3/7/17

WHO MADE WHO 411F  
**ASHW WHO DA MAN**  
ASHW CA X MA X SM 55



BHCS HEAT SEEKER 23  
**JSUL SULTRY 6640**  
JSUL MA X AN 6651



TSSC ONE OF A KIND 2044K  
\$75,000 Daughter of Lot 11 sired  
by SCC SCH 24 Karat 838



TSSC SASSY AND SALTY 5010N ET  
\$31,000 Daughter of Lot 11 sired by  
Colburn Primo 5153  
Full Sister to Lot 23

### DUE 4/1/26 TO REVELATION 2K

Two donor candidates that reign from one of the most coveted matings in the entire show cattle business. There is not only a long and prestigious list of high sellers and champions that have resulted from the Who Da Man x Sultry 6640 mating, but as the daughters have entered production, they have reinvented the wheel for both show heifer and steer producers. Notable full sisters to this duo include SSUL Who Dat Darling 4303B, who was the Supreme Champion Female at the 2015 Iowa State Fair as well as Aksarben. 4303B has become a leading force in the Chianina breeding program for Sullivan, and has multiple daughters that lead the business including JSUL Who Dat Cat, the 2018 Iowa Beef Expo Supreme Champion Female, who went on to be selected the Champion Female at the 2018 National Chianina Jr. Heifer Show as well as Reserve Supreme at the 2018 Iowa State Fair. She ended her show career as being Grand Champion Chianina Female in the Jr. Show at the 2018 NAILE. Another is JSUL Who Dat Darling 902G ET, the Supreme Champion Breeding Heifer at the 2020 North American, who was also the 2020 NWSS Reserve Grand Champion Chianina Female, and 2020 American Royal Grand Champion AOB. Another full sister to this pair is the \$2 million+ producing JSUL Who's Playing 6973D that calls Hagerstown home, the track record of champions and dollars that can be attributed to her influence is immense and overwhelming. The opportunity to secure full interest in a proven WDM x 6640 female doesn't come often either, yet JSUL Sassy Sultry 7013E already has a track record of success, with a \$75,000 daughter of SCC SCH 24K 838 and a \$30,000 Colburn Primo 5153 daughter notched to her resume. The Who Da Man x 6640 combination sling shotted the business to new heights and became a major stepping stone in the pathway to the elite phenotype we see at the cutting edge of the show heifer business. There aren't many more of these out there available, so jump on board while you can!

### DUE 12/10/25 TO HOW GREAT THOU ART



JSUL WHO DAT RAPTOR 6976D ET  
2017 NAILE Supreme Champion  
Junior Breeding Heifer  
Full Sister to Lots 11 & 12



JSUL WHO DAT LADY 2037Z  
2013 NAILE Grand Champion  
Chianina Heifer  
Full Sister to Lots 11 & 12





JSUL WHO DAT FETTY 6322D  
Legacy Full Sister to Lot 13



JSUL PCC WHO'S LOOKIN 2113K ET  
2023 National Junior Heifer Show  
Reserve Grand Champion Chianina Heifer  
Full Sister to Lot 13

13

## JSUL TOTAL GIRL 1165J

21.56% CHIANINA | ACA: 429768 | DOB: 4/5/21

WHO MADE WHO 411F  
**ASHW WHO DA MAN**  
ASHW CA X MA X SM 55



MONOPOLY  
**JSUL TOTAL GIRL 41**  
JSUL LUCKY PLAY GIRL 1004

Here we have a young, untapped and exciting opportunity to secure a full sister to the \$80,000 JSUL Who Dat Fetty 6322D ET from the 2022 Embryos on Snow, that was purchased by MPJ Cattle Company, Jared Werning Cattle and Jared Holmes. JSUL Who Dat Fetty 6322D ET is quickly proving to be one of the most dynamic and influential daughters of ASHW Who Da Man to ever arise, a title that is not awarded easily when you begin to reflect on the prestigious list of accolades that can be tied to his influence. However, credit is due in this situation, as 6322D has already begun to write a novel that foreshadows the building of a dynasty—one that will etch her name eternally as one of the most significant breeding accomplishments to ever come out of Sullivan Farms. JSUL Who Dat Fetty 6322D ET highlighted the 2017 show string for Sara Sullivan as she garnered the attention of many onlookers, not just because of her show ring good looks but rather the generating power and extreme feature that she offered as a potential breeding piece. Her lifetime dollar generating includes progeny at \$127,500, \$73,000, \$59,000, \$40,000, \$36,000, \$31,000, \$26,500, \$26,000, and multiple other high sellers for show heifer brokers across the nation. Take note of the incredibly high Chianina breed makeup of 21.5% she possesses, and think of the breeding flexibility this offers! Potential goldmine selling right here, there is big time opportunity and upside with this high-end investment opportunity.

DUE 12/10/25 TO ROSE MC ENCORE 0463



## TSSC WHO'S PLAYING 4309MT ET

6.55% CHIANINA | ACA: 430110 | DOB: 3/10/24

SCC TRADITION OF 24  
**SCC SCH 24 KARAT 838**  
FCF PROVEN QUEEN 419



ASHW WHO DA MAN  
**JSUL WHO'S PLAYING 6973D ET**  
JSUL SULTRY 6640



JSUL WHO'S PLAYING 6973D ET  
Prolific Dam of Lot 14

The only opportunity to tap into a 6973D daughter in the 2025 Christmas Collection. JSUL Who's Playing 6973D ET has emerged as one of the most prolific daughters of the famed ASHW Who Da Man x JSUL Sultry 6640 mating. Her Angus-sired daughters dominated the National Chianina Show at the North American in 2020, 2021, and 2022, with three different daughters crowned National Champion Chianina Female. The impact of the great 6973D will be everlasting not only on our program but across the industry. Daughters of this cow family continue to fill donor pens in the most progressive and successful show cattle herds in the country, and this SCC SCH 24 Karat 838 daughter continues the trend. We think her production future will be very exciting, beginning immediately with this first mating to PVF Blacklist 7077.

**DUE 2/9/26 TO PVF BLACKLIST 7077**



## STOTLER'S KATIE 4303M ET

9.43% CHIANINA | ACA: 430122 | DOB: 2/19/24

WHO MADE WHO 411F  
**ASHW WHO DA MAN**  
ASHW CA X MA X SM 55



SILVEIRAS STYLE 9303  
**BUTLER FARMS KATIE G20 ET**  
MINN KATIE 9B ET



MINN KATIE 9B ET  
Legendary Maternal Granddam of Lot 15

Here we offer the opportunity to secure a young direct daughter of the legend himself, ASHW Who Da Man—truly something that cannot be found on every street corner these days. The WDM influence is as potent as ever, yet demand far outweighs supply, making the chance to acquire a young, high-quality donor prospect like 4303M one to take very seriously. If you're looking for a shortcut to the top of the show heifer business, this is the kind to invest in. She is super eccentric in her look and feature, with big hair, monster bone, and unteachable presence. Her pedigree adds even more confidence, stemming back to the legendary MINN Katie 9B ET through a very impressive Silveiras Style 9303 daughter who is a full sister to numerous high sellers, champions, and donors for Minnaert.

**DUE 5/1/26 TO SPEED LIMIT**





JSUL/TSSC BETH DUTTON 0113H  
2020 NAILE Reserve Grand Champion  
AOB Heifer Dam of Lot 16  
2022 Cattlemen's Congress  
Grand Champion Percentage Simmental Heifer



2025 Tulsa State Fair  
Reserve Grand Champion Market Steer  
Full Brother to Lot 16



TYWC 9M ET  
\$100,000 Maternal Sister to Lot 16

16

## TSSC BLACK SHEEP 3115L ET

4.58% CHIANINA | ACA: 430135 | DOB: 10/20/23

WALKS ALONE  
**HERE I AM**  
GORETSKA 805



HPF QUANTUM LEAP Z952  
**JSUL/TSSC BETH DUTTON 0113H**  
UDELL GLAMOUR FIRL 18B

TSSC Black Sheep 3115L ET stands out from the crowd just like her National Champion mother, JSUL/TSSC Beth Dutton 0113H. This Here I Am daughter of the 2020 NAILE Reserve Grand Champion AOB Heifer and 2022 Cattlemen's Congress Grand Champion Percentage Simmental Heifer is not for the faint of heart, as she carries all the extras that made her mother one of the most memorable champions to ever step through the Hagerstown show barn. This mating has worked before—a full brother to 3115L was the 2025 Tulsa State Fair Reserve Grand Champion Market Steer for Finley Yocham after selling high on RJ's 2024 Pasture Sale. Another pair of full brothers brought \$45,000 and \$30,000 in fall 2024. On the heifer side, maternal siblings include the \$100,000 and \$50,000 TYWC High Hopes 8J phenoms for Webster and Fitz. The show steer business is as vibrant as ever, and it will only take one big win from this female to change the face of a program.

DUE 1/15/26 TO BNWZ DATA BANK 1311C ET





SUL JAYLNN 0904X  
2011 NAILE Supreme Champion Junior  
Breeding Heifer Dam of Lot 17



JSUL SASSY JALYNN 7507E ET  
2018 NAILE Grand Champion Chianina  
Heifer Maternal Sister to Lot 17

# 17

## SUL JALYNN'S BRILLIANT 3814

6.42% CHIANINA | ACA: 372639 | DOB: 11/28/13

S A V BISMARCK 5682

**S A V BRILLIANCE 8077**

S A V BLACKCAP MAY 5270



SULL RIGHT DIRECTION ET

**SUL JAYLNN 0904X**

JSUL JALYNN 344

This S A V Brilliance 8077 daughter is a prime example of why his progeny are trusted by the best in not just the show cattle circles but then entire beef business. This Chianina female proves first-hand the incredible phenotype and maternal power that he is capable of generating! We love the undeniable look of balance and completeness of this donor prospect, as she is ultra-durable in her structural build, dense and robust in her middle third and cocks off with a stop and stare kind of presence. You could be very profitable in many facets of beef production with a cowherd full of females like SUL Jalylnn's Brilliant 3814. Turning to the maternal side of her pedigree reveals the legendary SUL Jaylenn 0904X, a female that has been a staple in the Sullivan breeding arsenal ever since winning her impressive 2011 NAILE Supreme Champion Junior Breeding Heifer title. Maternal sisters to 3814 include the 2018 NAILE and American Royal Grand Champion AOB Heifer, and 2018 NAILE Grand Champion Chianina Heifer, JSUL Sassy Jalylnn 7507E ET. Another is JSUL Who Dat Steiner 8267F who was the Supreme Champion Female at the 2018 Down for the Cause and the 2018 Kansas Beef Expo, and as bred heifer she was also the 4th Overall Female at the 2019 Iowa State Fair 4-H Show and Champion AOB at the 2019 NAILE for Sara Sullivan. The third is the JSUL Who Dat Steiner 8266F female that was the Champion AOB Female at the 2019 American Royal and Champion Chianina Female at the 2019 NAILE and 2020 NWSS, and now is a leading donor in Dunlap. It's hard to argue that the combination of phenotype and pedigree power of 3814 foreshadow an exciting future ahead here.

DUE 1/22/26 TO PAVED WITH GOLD





SULL RIGHT TAMALE 3365 ET "TAMMY"  
2014 NAILE Reserve Grand Champion  
Chianina Heifer Full Sister to Lot 18



JBOY TAMMY 843  
2020 NWSS Reserve Grand Champion  
Percentage Simmental Heifer  
Daughter of Full Sister to Lot 18



JBOY TAMMY 902G  
2020 NAILE Grand Champion  
Percentage Simmental Heifer  
Daughter of Full Sister to Lot 18

18

## SSUL RIGHT TAMALE 4104

SHORTHORN PLUS | 9.13% CHIANINA | ASA: AR61279 | ACA: 377406 | DOB: 1/24/14

CF TRUMP X  
**SULL RIGHT DIRECTION**  
NPS DESERTROSE 004

X

HEAT WAVE  
**SUL TAMALE**  
JSUL MOMMA TAMALE 58

The Shorthorn business is running with a full head of steam once again and is among the most demanded divisions across breeds. Here is a time-tested, championship-proven donor with plenty left to offer both Shorthorn and composite show heifer programs. SSUL Right Tamale 4104 stems from the immortal SUL Tamale female—a name synonymous with elite show heifer production. She is a full sister to the multi-million dollar producing SULL Right Time Tamale 3365 ET, who is best known at "Tammy" and has carried the Boyert-Core program to the next level. Yet, 4104 herself has been a trident in production, being best known as the dam of Coldar Cunningham's Reserve Grand Champion Chi Composite Female at the 2022 ACA National Junior Heifer Show. TSSC Ready to Roll 1234J, a Colburn Primo 5153 daughter, embodied the supreme phenotypic quality expected from one of America's most successful show families. 4104 also produced a pair of daughters sired by LLSF Pays To Believe ZU194 that commanded an average of more than \$40,000 per head in! The opportunity to reap the rewards from this proven legend in her entirety sells December 21st.

**OPEN & READY FOR EMBRYO PRODUCTION**



## JSUL REBA 31122

PB SM | ASA: 4288874 | DOB: 11/30/23

W/C RELENTLESS 32C

**JSUL SOMETHING ABOUT MARY 8421**

JBSF PROUD MARY



THSF LOVER BOY B33

**JSUL OH BOY REBA 0267G**

DAF REBA C85



JSUL OH BOY REBA 0267G  
2021 American Royal Supreme Champion  
Junior Breeding Heifer  
Dam of Lot 19

JSUL Reba 31122 is a purebred daughter of JSUL Something About Mary 8421, backed by the 2021 American Royal Supreme Champion Junior Breeding Heifer, JSUL Oh Boy Reba 0267G. Her maternal granddam is the iconic DAF Reba C85, the 2016 NWSS Grand Champion Percentage Simmental Heifer. A full sister to C85, DAF Reba C707, earned the same title in 2017. The famed “Reba” cow family has been instrumental in the Sullivan Farms Simmental program’s success. This daughter offers striking looks, longevity, and massive cow power. She is a full sister to JSUL Reba 312L, the Grand Champion Purebred Female at both the 2024 AJSA North Central Regional and the 2025 National Western Stock Show for the Griswold family.

DUE 3/4/26 TO TJSC H/TOWN 131L





BRAMLETS BEAUTIFUL E742  
2020 NWSS Grand Champion  
Percentage Simmental Heifer  
Daughter of Lot 20



BRAMLETS BEAUTIFUL E742  
2019 IN State Fair Supreme  
Champion Junior Breeding Heifer  
Daughter of Lot 20

There is no questioning the contribution and impact of Bramlets Beautiful A317 on both the Bramlet and Schaeffer programs. Her resume includes numerous champions and high sellers, with more on the way—she continues to reinvent herself with each new mating, all while being a strong egg producer. The female that started it all is Bramlets Beautiful E742, the 2019 NWSS Grand Champion Percentage Simmental Heifer shown by Clint Main. E742 dominated throughout her career, claiming wins at several of the nation's toughest jackpots before being crowned the 2019 Indiana State Fair Supreme Champion Junior Breeding Heifer. Another daughter, B C R Beautiful 310K—sired by SCC SCH 24 Karat 838—was the \$80,000 high seller of the 2023 Buck Creek Ranch "Grand Event." Opportunities to purchase million-dollar producing donors are rare—don't overlook this one for the 2025 "Christmas Collection."

OPEN & READY FOR EMBRYO PRODUCTION

## BRAMLETS BEAUTIFUL A317

PB SM | ASA: 2935013 | DOB: 3/10/13

YARDLEY IMPRESSIVE T371 SHS NAVIGATOR N2B  
**YARDLEY HIGH REGARD W242** X **HPF MS BEAUTIFUL S054**  
MISS YARDLEY T68 SVF SHEZA CLASSIC N905



B C R BEAUTIFUL 310K  
\$85,000 Full Sister to Lot 21

S&S She's a Beauty 481M is an SCC SCH 24 Karat 838 daughter out of the legendary Bramlets Beautiful A317 donor, who has long anchored the Percentage Simmental program in Hagerstown. A317 has been a high-dollar generator and one of the most popular embryo sources in recent years. She is a full sister to multiple high-dollar features, including the \$80,000 B C R Beautiful 310K raised and sold by Buck Creek Ranch. Her mating to BNWZ Data Bank 1311C ET sets the stage for an exciting start to her production career.

DUE 2/3/26 TO BNWZ DATA BANK 1311C ET



## S&S SHE'S A BEAUTY 481M

1/2 SM 1/2 AN | ASA: 4600916 | DOB: 3/4/24

SCC TRADITION OF 24 YARDLEY HIGH REGARD W242  
**SCC SCH 24 KARAT 838** X **BRAMLETS BEAUTIFUL A317**  
FCF PROVEN QUEEN 419 HPF MS BEAUTIFUL S054



**EVERHARTS BRANDY**  
2024 American Royal Reserve Grand  
Champion Purebred Simmental Heifer  
\$60,000 Maternal Sister to Lot 22



**EVERHARTS BRANDY**  
2025 FWSS Grand Champion  
Purebred Simmental Heifer



**EVERHARTS FOXY**  
2021 Hoosier Beef Congress Reserve  
Grand Champion Purebred Simmental Heifer  
She Sells as Lot 22!



## EVERHARTS ROXY

PB SM | ASA: 3795473 | DOB: 3/4/20

YARDLEY UTAH Y361  
**W/C RELENTLESS 32C**  
MISS WERNING KP 8543U



MR HOC BROKER  
**EVERHARTS FOXY**  
EVERHARTS STAR LIGHT

Everhart's Roxy was a successful and memorable champion for the Hendrickson family. Purchased for \$67,500 from the Paulsen Cattle "Diva's & Donors" Female Sale, and she went on to be the 2020 Hoosier Beef Congress Reserve Grand Champion Purebred Simmental and the 2021 Indiana State Fair Grand Champion Purebred Simmental. She is a daughter of the consistent MR HOC Broker female Everhart Foxy—a donor known for high sellers marketed through the Hartman program. In the 2021 "Customer Appreciation" Sale, two daughters brought \$45,000 and \$29,000. Another maternal sister, Everharts Brandy, sold for \$60,000 to Morgan Jackson in 2023 and was the Reserve Champion Simmental Female in the 2024 American Royal Open Show and Champion Simmental Female at the 2025 FWSS. A no-miss cow family stands behind this donor candidate.

DUE 2/26/26 TO SLIK ME TOO 5K





TSSC SELENA 330A "EMILY"  
2014 NAILE Supreme Champion  
Junior Breeding Heifer  
Full Sister to Lot 23

S&S Smarty's Angel 513C is a full sister to Kennedy Core's S&S Selena, the 2014 NAILE Supreme Champion Junior Female—a female that put the program on the map. Smarty's Angel was a \$43,000 high seller and has matured into one of the most impressive females you will find. This dual-registered % Simmental & Mainetainer female offers wide versatility to show cattle enthusiasts and stems from the legendary GOET I-80 and one of the original S&S donor females, S&S Miss Smarty Pants. She comes bred early to Livin The Dream—a mating we believe is lined up perfectly to enhance her investment appeal.

DUE 1/15/26 TO OHL LIVIN' THE DREAM 389-1L

## S&S SMARTY'S ANGEL 513C

1/2 SM | MAINETAINER | ASA: 3003112 | DOB: 8/31/15

COWANS ALI 4M  
**GOET I-80**  
BPF MILEY 80T



NICHOLS BLK DESTINY D12  
**S&S MISS SMARTY PANTS**  
WAR OFANCY PANTS 603



BCII SANDY 0215  
2017 NWSS Reserve  
Grand Champion  
Junior Angus Heifer  
Dam of Lot 24

BCII HENF Sandy 202G is a daughter of the futuristic champion BCII Sandy 0215, a highly successful show heifer for Evan Henning whose accomplishments culminated in being the Reserve Grand Champion Angus Female at the 2017 NWSS. As expected, she has been a potent producer, most recently as the dam of Josie Phillips' BNWZ Dignity 8017 daughter—the Grand Champion Angus Female at the 2025 Cattlemen's Congress Junior Show and the eventual Reserve Supreme Champion Junior Female. This family traces back to the iconic KNC Cabin Creek Sandy 905—one of the most productive and high-dollar generating Angus show females of the past two decades. This MR HOC Broker daughter is a standout of the offering, combining the best of both worlds in one impressive beast.

DUE 4/11/26 TO REVELATION 2K



## BCII HENF SANDY 202G

1/2 SM 1/2 AN | ASA: 3627678 | DOB: 2/14/19

SVF STEEL FORCE S701  
**MR HOC BROKER**  
JM BF H25



SILVEIRAS STYLE 9303  
**BCII SANDY 0215**  
KNC CABIN CREEK SANDY 905



25

## S&S BELIEVE IN FOXY 424M

PB SM | ASA: 4600353 | DOB: 3/10/24

CNS PAYS TO DREAM T759  
**LLSF PAYS TO BELIEVE ZU194**  
LLSF URABABYDOLL U194



MR HOC BROKER  
**JBSF PLENTY FOXY 12E**  
JBSF MISS GOLDMINE 303A

DUE 3/30/26 TO SPEED LIMIT



JBSF PLENTY FOXY 12E  
Dam of Lots 25-30



LLSF PAYS TO BELIEVE ZU194  
Iconic Sire of Lots 25-27





## S&S PAYS TO BE GOOD

PB SM | ASA: 4600356 | DOB: 3/1/24

CNS PAYS TO DREAM T759  
**LLSF PAYS TO BELIEVE ZU194**  
LLSF URABABYDOLL U194



MR HOC BROKER  
**JBSF PLENTY FOXY 12E**  
JBSF MISS GOLDMINE 303A



## S&S SHE'S SO FOXY 4307M

PB SM | ASA: 4600354 | DOB: 2/28/24

CNS PAYS TO DREAM T759  
**LLSF PAYS TO BELIEVE ZU194**  
LLSF URABABYDOLL U194



MR HOC BROKER  
**JBSF PLENTY FOXY 12E**  
JBSF MISS GOLDMINE 303A



S&S TSSC BT ARIANA 1226J  
2021 Hoosier Beef Congress  
4th Overall Junior Breeding Heifer  
Maternal Sister to Lots 25-28 & 30

**DUE 2/3/26 TO CONLEY NO LIMIT**

JBSF Plenty Foxy 12E has been a program cornerstone, and the HOC MR Broker daughter has generated a long list of success stories for the S&S prefix. JBSF Plenty Foxy's show career was short but illustrious, taking home the Third Overall Purebred banner at the 2018 Simmental Junior Nationals and the Supreme Female banner at the 2018 Keystone International Livestock Exposition in Pennsylvania. Yet the most prestigious days have been in production, generating over \$2 million of lifetime earnings, across an array of matings, both Simmental and Angus. This most recently includes the Encore sired daughter of Foxy that the Hendrickson family showed to Supreme Champion Female at the 2024 Indiana State Fair. Unfortunately Foxy has passed, and so the inventory is depleting. If you don't have a daughter of Foxy working for your program, then there is no point in waiting around, they are a treasured piece of SimGenetic property that needs to be secured. These purebred Foxy daughters are built as burly and big body bodied as you could ask for, with a massive set of running gear and impressive look of symmetry from the side. These females will serve as perfect foundations to set up for the next edition of the powerful foxy lineage!

**DUE 1/16/26 TO REVELATION 2K  
SEXED FEMALE SEMEN**



REVELATION 2K  
Service Sire to Lot 27



28

## S&S PUSHING THE LIMITS

1/2 SM 1/2 AN | ASA: 4601671 | DOB: 1/21/24

CONLEY NO LIMIT  
**TSSC BT LIMIT UP 1099J ET**  
SULL DREAM ON 5158 ET



MR HOC BROKER  
**JBSF PLENTY FOXY 12E**  
JBSF MISS GOLDMINE 303A

We love the results of this fresh mating on JBSF Plenty Foxy 12E with TSSC BT Limit Up 1099J ET. It's no secret that Angus-influenced matings excel on the MR HOC Broker daughters, and this combination brings a unique twist without sacrificing quality. Limit Up has become a show-heifer-making powerhouse, proving his worth in production following his own National Champion Shorthorn Plus career. He is a son of the legendary 5158C Shorthorn donor, whose progeny continue to generate large dollars and championships every season. This lineage combines outlier features with function, pedigree depth, and predictability—making cattle that work across breed lines.

DUE 2/18/26 TO SPEED LIMIT



S&S TSSC MAIN MILEY CYRUS  
2024 KILE Supreme  
Champion Breeding Heifer  
Maternal Sister To Lots 25-29  
& Full Sister To Lot 30



TSSC BT LIMIT UP 1099J ET  
2022 Cattlemen's Congress  
Reserve Supreme Champion Bull  
Sire of Lot 28





S&S TSSC BT ARIANA 1226J  
2022 Purdue AGR  
Supreme Champion  
Junior Breeding Heifer  
Full Sister to Lot 29

One of the most consistent and defining matings in Hagerstown has been SCC SCH 24 Karat 838 × JBSF Plenty Foxy 12E. The champions and high sellers produced from this mating over the past five years are staggering. Perhaps the most recognizable full sister to 30021 is the Hendrickson family's \$100,000 S&S TSSC BT Arianna, who accumulated a barn-full of banners and began her production career with strong results this past fall. This female comes with all the trendy, high-end pieces that have made this mating one of the most sought-after in both the sale pasture and the show ring.

## S&S FOXY'S BABE 30021

1/2 SM 1/2 AN | ASA: 4243662 | DOB: 8/31/23

SCC TRADITION OF 24  
**SCC SCH 24 KARAT 838**  
FCF PROVEN QUEEN 419



MR HOC BROKER  
**JBSF PLENTY FOXY 12E**  
JBSF MISS GOLDMINE 303A

DUE 3/1/26 TO REVELATION 2K



S&S COWAN DUA LIPA 758L  
2024 IN State Fair Supreme Champion Junior Breeding Heifer  
Full Sister to Lot 30

JBSF Plenty Foxy 12E has become one of the most dominant Simmental donors in the business, and her ability to click with Angus-sired matings is unmatched. Here we see her successful synergy with ROSE MC Encore 0463—the same mating behind both the Hendrickson family's S&S COWAN Dua Lipa 758L, the Supreme Champion Female at the 2024 Indiana State Fair and Eli Walther's S&S TSSC MAIN Miley Cyrus, a female that had a tremendous 2024–2025 season, highlighted by Supreme Champion titles at the Indiana State Fair Open Show and the KILE Open and Junior Shows. We love the combination of outline, design, power, and stoutness that consistently comes from this mating. She will already have an impressive return on investment on her side at sale time, being bred to the hottest Simmental bull in the business, Revelation 2K.

SERVICED 10/4/25 TO REVELATION 2K



## S&S BUILT TO DANCE

1/2 SM 1/2 AN | ASA: 4601672 | DOB: 3/20/24

SSF ON POINT 4028  
**ROSE MC ENCORE 0463**  
BURNS ELBA 1454



MR HOC BROKER  
**JBSF PLENTY FOXY 12E**  
JBSF MISS GOLDMINE 303A



## S&S MARY KATE 4074M

PB SM | ASA: 4600910 | DOB: 3/20/24

W/C RELENTLESS 32C  
**JSUL SOMETHING ABOUT MARY 8421**  
JBSF PROUD MARY



CCS/WHF OL' SON 48F  
**WHF DELILAH 450H**  
WHF DELILAH 45D



## S&S ASHLEY 4075M

PB SM | ASA: 4600911 | DOB: 3/21/24

W/C RELENTLESS 32C  
**JSUL SOMETHING ABOUT MARY 8421**  
JBSF PROUD MARY



CCS/WHF OL' SON 48F  
**WHF DELILAH 450H**  
WHF DELILAH 45D



WHF DELILAH 450H  
Dam of Lots 31 & 32

**DUE 1/20/26 TO PVF BLACKLIST 7077  
OR NEXT CYCLE TO SPEED LIMIT**

Here is a powerful set of full sisters out of the exciting WHF Delilah 450H donor. She was a fan favorite during the fall of 2022 when the Eggersman brothers showed her on the green chips. Purchased in the make-up area with Boyert and Buck Creek for \$45,000, she has quickly emerged as one of the hottest young donors in our lineup. Early daughters have sold for \$45,000, \$30,000, \$17,000, and \$15,000. A full sister to this pair, S&S TSSC Something to See, was the Division I Champion at both the 2024 American Royal and the 2024 North American, the Reserve Grand Champion Simmental at the 2024 KILE, and the Third Overall Division IV Champion at the 2025 AJSA Summer Classic. This is a rising cow family—get in while demand is red-hot.

**DUE 2/26/26 TO SPEED LIMIT**



S&S TSSC SOMETHING TO SEE  
2024 NAILE Division I Champion Simmental Heifer  
Full Sister to Lots 31 & 32





JSUL/TSSC BETH DUTTON 0113H  
2022 Cattlemen's Congress  
Grand Champion Percentage  
Simmental Heifer  
Dam of Lot 33

JSUL/TSSC Beth Dutton 0113H is one of the most memorable champions to pass through Hagerstown—not only a high seller with unique markings, but one of the most futuristic, outlier females we've ever been associated with. While she was the 2022 Cattlemen's Congress Grand Champion Percentage Simmental Heifer for Seth Martin, her production career is what will cement her among the greats. She has worked on both show heifer and club calf matings with remarkable versatility. In the last year alone, her progeny brought \$100,000, \$50,000, two at \$45,000, \$35,000, \$30,000, and \$28,000. One of those at \$45,000 was a full sister to S&S Something About Beth—a calf division winner at the 2024 NAILE and the Division IV Champion at the 2025 AJSA Summer Classic, later earning 7th Overall Owned Percentage Female for Trey Davis.

DUE 1/17/26 TO REVELATION 2K

## S&S SOMETHING ABOUT BETH

3/4 SM 5/32 AN 1/32 CA 1/32 MA 1/32 MX | ASA: 4600912 | DOB: 2/18/24

W/C RELENTLESS 32C

HPF QUANTUM LEAP Z952

JSUL SOMETHING ABOUT MARY 8421

JSUL/TSSC BETH DUTTON 0113H

JBSF PROUD MARY

UDELL GLAMOUR FIRL 18B



HSC JADE 019J "Pretty Woman"  
Dam of Lot 34

S&S Pretty Woman 4096M will be one of the first daughters of the iconic HSC Jade 019J "Pretty Woman" to enter production. She appears to be the kind that will generate some serious returns. This purebred daughter of JSUL Something About Mary 8421 offers the same wild proportions that made her dam a prized possession—featuring a refined, choke-throated front end, massive body cavity, and extra stout features. Her ear and neck set are exceptional and highlight her stylish baldie markings. We have high expectations for the PVF Blacklist 7077 pregnancy she carries—a near-perfect mating for her phenotype.

DUE 1/19/26 TO PVF BLACKLIST 7077



## S&S PRETTY WOMAN 4096M

PB SM | ASA: 4600355 | DOB: 4/18/24

W/C RELENTLESS 32C

MR HOC BROKER

JSUL SOMETHING ABOUT MARY 8421

HSC JADE 019J "PRETTY WOMAN"

JBSF PROUD MARY

HSC FF CHLOE 008E



## S&S SUCH A FLIRT

PB SM | ASA: 4600915 | DOB: 1/11/24

W/C RELENTLESS 32C

**JSUL SOMETHING ABOUT MARY 8421**

JBSF PROUD MARY



MR HOC BROKER

**JS FLIRT AWAY 52H**

JS FLIRT A-WAY 59Y

A purebred female with major breeding intrigue, S&S Such a Flirt is a daughter of the JS Flirt Away 52H donor—a full sister to the famous “Boots” donor that helped shape the formidable Griswold Simmental program, producing leading donors and promotional AI sires. Boots herself was a Triple Crown Winning National Champion and one of the most dominant Simmental show heifers of the past 15 years. This JSUL Something About Mary daughter begins a trio of sisters from 52H that we are incredibly excited about. They carry the cow power and earning potential expected from this elite lineage. Note that a full sister to Such a Flirt was the Supreme Champion Female at the 2024 WV State Fair.

**DUE 1/17/26 TO PVF BLACKLIST 7077 SEXED FEMALE SEMEN**



JS FLIRT AWAY 52H  
Dam of Lots 35-37



JS BLACK SATIN 9B “Boots”  
2015-2016 Triple Crown Winning  
Purebred Simmental Heifer  
Full Sister to Dam of Lots 35-37





## S&S SHE'S A FLIRT 4012M

PB SM | ASA: 4600913 | DOB: 2/4/24

YARDLEY UTAH Y361  
**W/C RELENTLESS 32C**  
MISS WERNING KP 8543U



MR HOC BROKER  
**JS FLIRT AWAY 52H**  
JS FLIRT A-WAY 59Y

We love how W/C Relentless 32C mated on JS Flirt Away 52H. This female carries a striking, futuristic look and exceptional skeletal quality. The 52H daughters have quickly become a hot commodity— with the six daughters sold in 2023–2024 averaging \$30,000. This young donor prospect aligns the highest-earning cow families in the Simmental breed. She is bred for a standout first calf by Conley No Limit.

**DUE 1/17/26 TO CONLEY NO LIMIT SEXED FEMALE SEMEN**



BNWZ DATA BANK 1311C ET  
Service Sire to Lot 37

The SCC SCH 24 Karat 838 daughter of JS Flirt Away 52H offers quality from both a genetic and phenotypic standpoint. Being from the full sister to the record-setting JS Black Satin 9B “Boots” solidifies her producing potential. This percentage female is loaded with cow power on both sides of her pedigree. Her build and generating potential make her a safe investment at any level. We love her mating with BNWZ Data Bank 1311C ET—it’s no secret that these dual-registered show heifers are in high demand.

**DUE 1/18/26 TO BNWZ DATA BANK 1311C ET**



JS FLIRT A-WAY 59Y  
Maternal Granddam of Lots 35-37



## S&S SO FLIRTY 4073M

1/2 SM 1/2 AN | ASA: 4600914 | DOB: 2/17/24

SCC TRADITION OF 24  
**SCC SCH 24 KARAT 838**  
FCF PROVEN QUEEN 419



MR HOC BROKER  
**JS FLIRT AWAY 52H**  
JS FLIRT A-WAY 59Y



## S&S PEGG SHE'S ALL THAT

1/2 SM 1/2 AN | ASA: 4483422 | DOB: 5/4/24

SCC TRADITION OF 24  
**SCC SCH 24 KARAT 838**  
FCF PROVEN QUEEN 419



MR HOC BROKER  
**S&S BE MY HONEY 853F**  
HPF MS HONEY R007

S&S Pegg She's All That is a full sister to Hank Hanza's dominant champion S&S Pegg Fools Gold 1501J—the Grand Champion Percentage Simmental Female at the American Royal and Reserve Grand Champion Percentage Female at the 2023 Cattleman's Congress. She was ultimately crowned the 2022–23 PTP Ring of Champions Percentage Female of the Year. Opportunities like this are rare. Her dam, S&S Be My Honey 853F, is a MR HOC Broker daughter out of the program-building HPF Ms Honey R007, ensuring that the quality in this pedigree is no accident. We love the big-time phenotype of this donor prospect, with her powerful running gear, bold rib shape, and extra-flexible design.

DUE 2/6/26 TO PVF BLACKLIST 7077 OR 2/27/26 TO CONLEY NO LIMIT TOO CLOSE TO CALL



**S&S PEGG FOOLS GOLD 1501J**  
2023 Cattleman's Congress Reserve Grand  
Champion Percentage Simmental Heifer  
Full Sister to Lot 38



**S&S EMILY'S HONEY 518C**  
Full Sister to Dam of Lot 38



**HPF HONEY R007**  
2006 NAILE Grand Champion Purebred  
Simmental Heifer  
Maternal Granddam of Lot 38





JSUL LEAPIN MARY 8108F  
2019 KS Classic Grand Champion Heifer  
Dam of Lot 39

CRKS Relentless Mary is a W/C Relentless 32C daughter out of the JSUL Leapin Mary 8108F donor—a dominant show heifer for the Ralls & Hickman family, earning Supreme Champion titles at the Ohio AGR, Kansas Classic, and Huntington County Preview, along with multiple division wins at the American Royal, NAILE, and Denver. Her pedigree stacks even more power with the legendary JBSF Proud Mary, the 2016 AJSA National Classic Grand Champion Purebred Simmental; the 2016 Iowa State Fair Supreme Champion Female; and the 2016 NAILE Grand Champion Simmental Female in both the Open and Junior Shows. This female carries a pedigree loaded with the good stuff.

DUE 1/1/26 TO SLIK ME TOO 5K

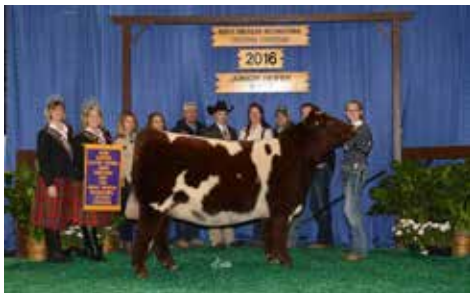
## CRKS RELENTLESS MARY

PB SM | ASA: 4269113 | DOB: 10/27/23

YARDLEY UTAH Y361  
**W/C RELENTLESS 32C**  
MISS WERNING KP 8543U



HPF QUANTUM LEAP Z952  
**JSUL LEAPIN MARY 8108F**  
JBSF PROUD MARY



SULL DREAM ON 5158 ET  
\$1 Million+ Producing Maternal Granddam of Lot 40

S&S Dreams Come True is built for speed! This heavy-duty, stout-made, striking female gets your imagination running about her future in production. She offers a unique pedigree as a daughter of the trending Revelation 2K and traces back to the legendary SULL Dream On 5158 ET—the leading source of excellence in our red, white, and roan program. The combination of pedigree and phenotype here is exceptional; you will not find many capable of replicating this level of opportunity.

DUE 1/17/26 TO BNWZ DATA BANK 1311C ET



## S&S DREAMS COME TRUE

1/2 SM 1/4 AN 1/4 SS

ASA: 4601674 | DOB: 2/16/24

TL REVENANT 35  
**REVELATION 2K**  
RIED BANDED MAE



CONLEY NO LIMIT  
**S&S DREAMS COME TRUE 041H**  
SULL DREAM ON 5158 ET



## MDAY MS VALLEY APPLE ET

LIM-FLEX | LFF2386670 | DOB: 1/23/21

GAMBLES HOTROD  
**SILVEIRAS STYLE 9303**  
SILVERIAS ELBA 2520



TASF ARISTOTLE 752A  
**ETGC CANDY APPLE**  
RDIO XOXO 29X



MDAY MS VALLEY APPLE ET  
2021 KILE Supreme Champion Junior Breeding Heifer

MDAY Ms Valley Apple ET represents the Limousin division with style. This high-quality cow prospect offers an incredible profile, flawless structure, and the kind of maternal build that will generate like a slot machine. Females like this will always be in demand—beautiful in profile, maternally designed, and robust in build. She proved her quality as a show heifer for Braylen, being selected as the Reserve Champion Limousin Female at the 2021 North American. Her mating to SLIK Me Too 5K is highly exciting and poised to generate impressive results.

**DUE 2/10/26 TO SLIK ME TOO 5K**



## TMCK QUEEN 878X

PB LIM | NALF: NPF1986469 | DOB: 9/21/10

GPFF BLAQUE RULON  
**DHVO DEUCE 132R**  
AMY JO DHAN 20L



FWLY BIG TIME  
**TMCK QUEEN 73T**  
EXLR QUEEN 786P



SKLS 276J  
2022 Cattlemen's Congress  
Division Champion Limousin Heifer  
\$45,000 Daughter of Lot 42

The Limousin division that calls home to Hagerstown, Indiana, has been on a rampant path toward the front end of the business, and this Purebred donor certainly helped put us on the map. With her \$45,000 high-selling Limousin female in the 2021 Pasture Sale, she then went on to be the 2022 Cattlemen's Congress Division I Champion Limousin Heifer for the Hoppa family. The pedigree that builds TMCK Queen 878X is loaded with the greats of yesteryear, being a direct daughter of the National Champion DHVO Deuce 132R, and she stems back to the legendary "Queen" family that stood at the heart of the Express Ranches Limousin program. There is plenty of good left in this matron, and the likelihood of her knocking it out of the park this coming January is high with her mating to ROSE Encore 0436.

**DUE 1/1/26 TO ROSE MC ENCORE 0436**





JSZC HH TSSC LARISSA 101G ET  
2021 OH State Fair Supreme  
Champion Junior Breeding Heifer  
Dam of Lot 43

MKLN 1105J  
2022 NJLSC Grand Champion  
Lim-Flex Heifer  
Full Sister to Lot 43

The result of the mating of PVF Blacklist 7077 with the big-time generator JSZC HH TSSC Larissa 101G ET strikes here! 101G was not only a champion in her own right, but has proven to have the same incredible heritability of quality that both her full sister, JSZC TSSC Larissa 49G, and her mother, Riverstone Charmed, have proven time after time. Not just in Limousin circles, but across various breeds, you will find their quality to be of championship caliber. A maternal sister to TSSL SA Charlize 3911L, by SCC SCH 24 Karat 838, was very successful for Hadley Hendrickson last year, being crowned the NJLSC Grand Champion Lim-Flex Female. You cannot go wrong with these Larissa descendants—just saddle up and hold on!

DUE 1/18/26 TO BNWZ DATA BANK 1311C ET

## TSSL SA CHARLIZE 3911L

LIM-FLEX | NALF: LFF2798659 | DOB: 10/15/23

PVF INSIGHT 0129  
**PVF BLACKLIST 7077**  
PVF BLACKBIRD 3070



SILVEIRAS STYLE 9303  
**JSZC HH TSSC LARISSA 101G ET**  
RIVERSTONE CHARMED



ELCX KINGS LANDING 599 D ET  
2018 NAILE Grand Champion Limousin Bull  
Sire of Lot 44

Stotlers Hazel 4305M is a daughter of the exciting ELCX Kings Landing 599D ET sire and stems from the maternal source TMCK Fig 613F, a cornerstone breeding piece for Josh Winslow that has become a reliable source of quality for his program. She has consistently generated sought-after Lim-Flex females, including the mother of 4305M. The mother of 4305M was the Grand Champion Limousin Female at the 2021 West Virginia State Fair and Fifth Overall Female at the 2020 Ohio State AGR. We love the high-quality build, rugged features, and impressive body shape of this female, and love how she will complement the J6 We The People 411J mating.

DUE 1/17/26 J6 TO WE THE PEOPLE 411J



## STOTLERS HAZEL 4305M

LIM-FLEX | NALF: PENDING | DOB: 1/1/24

MAGS XYLOID  
**ELCX KINGS LANDING 599 D ET**  
WLR PRADA



SILVEIRAS STYLE 9303  
**WINSLOW'S BLACK HAZEL**  
TMCK FIG 613F



45

## TOF MACI 464M

PB MAINE-ANJOU | AMAA: 568572 | DOB: 3/10/24

BOE GARTH  
**BKMT GAME ON 227G ET**  
BK JFR ZANELLA 227



DADDY'S MONEY 55Z  
**TJSC XIDEE 400E ET**  
BK XIDEE 069

The Maine-Anjou business is on fire right now, and we cannot source enough high-quality females for our show heifer customers. TOF Maci 464M is a standout of the offering for many reasons, and this BKMT Game On 227G ET daughter is one that draws a crowd. She has breeding-cattle character written all over her, yet still comes with all the extra pieces you would expect from her pedigree—stoutness, hair quality, unique proportions, and intriguing presence. We think she is just a mating away from blowing the doors off, and truly there is a long list of AI sires she could be matched with. We think she has the capability and phenotype to generate on either end of the spectrum—whether as a steer momma or a show-heifer maker. Just deciding which way to go with her will be half the fun! We kept it Maine-Anjou for her first calf with her mating to BNWZ Data Bank 1311C ET, but this is just the beginning of big things for this female in production.

DUE 1/16/26 TO BNWZ DATA BANK 1311C ET



BKMT GAME ON 227G ET  
Sire of Lot 45





NMR MATERNAL MADE  
Sire of Lot 46

The daughters of NMR Maternal Made are a hot piece of property in the show-calf business and are the building blocks to several success stories in both the club-calf and composite show-heifer realms. We think this one runs with the best of them, and it's not only her phenotype that foreshadows her incredible generating potential. A look into her pedigree reveals a legacy of females that work at the forefront of the business. Her dam, BDCC AGRF Addy 4241M ET, hung plenty of banners for the Baust family and has always been one of the most intriguing Maine-influenced females you may lay eyes on. She is a daughter of the legendary TSSC Sugar Momma 867, one of the cows that got this program going! Coming bred for a Styles Reset calf has us fired up, and we know there will be a big-time story out of this female.

SERVICED 12/1/25 BY STYLES RESET E016

## BDCC AGRF ADDY 4241M ET

MAINETAINER | AMAA: 567547 | DOB: 2/12/24

BPF MERCEDES BENZ 131U  
**NMR MATERNAL MADE**  
NMR 0-04X



SILVEIRAS STYLE 9303  
**BDCC AGRF DREAM GIRL 85F**  
TSSC SUGAR MOMMA 867



TSSC SUGAR MOMMA 867  
Maternal Granddam of Lots 46 & 47

The second of the BDCC AGRF Dream Girl 85F daughters is sired by the trendy WEIS All Me 10F and comes in a stout and powerful package, sporting a big set of feet and legs, a monster barrel, and a tight throat latch. We love the outline and proportions of this stunner and think she has rich show-heifer-making powers! Tie into a futuristic-built Maine female that will be a very versatile breeding piece going forward. The mating with BNWZ Data Bank 1311C ET for her first calf will be an interesting start to her breeding career and certainly has the potential to ring the bell right off the bat.

DUE 1/17/26 TO BNWZ DATA BANK 1311C ET



## BDCC AGRF LEXI 4232M ET

MAINETAINER | AMAA: 567548 | DOB: 2/2/24

MINN LIVE ACTION 203Y  
**WEIS ALL ME 10F**  
BSC CANDI 42Z



SILVEIRAS STYLE 9303  
**BDCC AGRF DREAM GIRL 85F**  
TSSC SUGAR MOMMA 867



CONLEY A 1  
\$100,000 Sire of Lot 48

## 48

### UDE SARAS DREAM 5134

ANGUS | AAA: PENDING | DOB: 5/7/25

GATEWAY FOLLOW ME F163

**CONLEY A 1**

EXAR PRINCESS 6741



EXAR BLUE CHIP 1877B

**UDE SARAS DREAM 1086**

SILVEIRAS SARAS DREAM 2335



UDE SARAS DREAM 1086  
\$600,000 Dam of Lot 48



UDE SARAS DREAM 4010  
2025 NAILE Supreme Champion Junior  
& Open Breeding Heifer  
\$400,000 Maternal Sister to Lot 48

There is not a hotter cow family in the business right now, regardless of breed! The first daughters of the \$600,000 UDE Saras Dream 1086 sold last year, among this group was the \$400,000 UDE Saras Dream 4010, the most dominant female of the 2025 show season. This summer she was the NJAS Grand Champion Owned Female for Kaylee Langford, and then returned to the ring this fall at the North American to be crowned the Champion Angus Female in both the Open and Junior shows, and then doubled down with her Supreme Champion Female titles in both the Open and Junior Shows. Few would debate this females' accolades either, she is regarded by many as one of the most impressive Angus Females they have ever laid eyes on and was a very popular champion. The power of pedigree goes well beyond the first generation too, as the maternal granddam of the 1086, Silveiras Saras Dream 2335, was the 2013 American Royal ROV Grand Champion Angus Heifer. She is a full sister to Silveiras Saras Dream 1339, the dam of Colburn Primo 5153 and CCC Sara's Dream 5116. We think you would struggle to draw an outline that is more ideal than this Conley A 1 daughter, she ties all her pieces together so effortlessly and for these reasons we think the potential for this one to compete at the highest level in the showing is immense. When she is parked it's impressive, but when she gets on the move is when she sets herself apart. This female proves that there are still heavyweight contenders available for sale late in the year.





**MR HOC BROKER**  
2012-2013 Triple Crown Winning  
Purebred Simmental Bull  
Sire of Lots 49 & 51



**CORE ANNIE LU 24K 230K**  
2022 Hoosier Beef Congress  
Supreme Champion Junior Breeding Heifer  
Dam of Lot 49



**CORE ANNIE LU 24K 230K**  
2023 NAILE 4th Overall Jr Breeding Heifer  
Dam of Lot 49

49

## S&S BT RAGGEDY ANNE 573N

1/2 SM 1/2 AN | ASA: PENDING | DOB: 5/21/25

SVF STEEL FORCE S701  
**MR HOC BROKER**  
JM BF H25



SCC SCH 24 KARAT 838  
**CORE ANNIE LU 24K 230K**  
PLUM CREEK ANNIE LU 4472

We know it's getting late in the year, but this open heifer division is still stacked with the same quality you expect in September in Hagerstown. S&S BT Raggedy Anne 573N is a high-quality half-blood female stemming from a mating we envisioned from the moment we first saw CORE Annie Lu 24K 230K. This MR HOC Broker daughter is stunning from the side—perhaps as exotic through her chest and throat as any Broker female we've been a part of—yet she still carries the real-world beef quality the sire group is known for. Her maternal side is equally powerful, tracing back to Braylen's 2022 Hoosier Beef Congress Supreme Champion Junior Breeding Heifer and 2023 NAILE 4th Overall Junior Breeding Heifer, CORE Annie Lu 24K 230K. There are no limits to the potential of this female as both a show heifer and future donor.



REVELATION 2K  
Sire of Lot 50



BMW ACE 2 101K ET  
2023 NAILE Grand Champion  
Chiangus Heifer  
Dam of Lot 50

50

## S&S TSSC ACES WILD 5044N

1/2 SM | 4.52% CHIANINA | ASA: 4610145 | DOB: 4/3/25

TL REVENANT 35  
**REVELATION 2K**  
RIED BANDED MAE



SELDOM REST SANDMAN 6075  
**BMW ACE 2 101K ET**  
ROCKN ACE 2 413B

A very intriguing dual registered female that looks like she is going to play ball regardless of the field she steps on. This high tying, wild proportioned, star gazing female is one that looks to have massive upside potential. Not only is her phenotype intriguing, but she too comes with a very interesting and fresh pedigree, being a daughter of a new donor for the program, the 2023 NAILE Grand Champion Chiangus Heifer, BMW Ace 2 101K ET. She is again supported by another NAILE Grand Champion Chiangus Heifer as her maternal granddam, ROCKN Ace 2 413B won the banner in 2015 for the Skiles family. Paired up with the hottest Simmental bull in the business right now, who sired both the Open & Junior Supreme Champion Females at the American Royal, the stage is set for purple banners here.





**JSUL TSSC LADY IN BLACK 2181K**  
2024 Cattlemen's Congress Grand Champion Purebred Simmental Heifer  
Dam of Lot 51

This Purebred MR HOC Broker option comes from Hadley Hendrickson's 2024 Cattlemen's Congress Grand Champion Purebred Simmental Heifer, JSUL TSSC Lady in Black 2181K. 2181K stems from the legendary JSUL Something About Mary 8421 x PEINE/GS Rosie 677D mating—the same combination behind countless high sellers and national champions in the Simmental breed over the past five years, including the 2025 Cattlemen's Congress Supreme Champion Female for the Bartlow family. DTHH TSSC Lady in Black 5148N comes with elite features: extra stout bonework, impressive hair quality, a high-tying neck, and a uniquely stout hip. She combines all the intangible traits it takes to win on the biggest stages—just like the champions that line her pedigree.

## DTHH TSSC LADY IN BLACK 5148N

PB SM | ASA: PENDING | DOB: 6/3/25

SVF STEEL FORCE S701  
**MR HOC BROKER**  
JM BF H25



JSUL SOMETHING ABOUT MARY 8421  
**JSUL TSSC LADY IN BLACK 2181K**  
PEINE/GS ROSIE 677D



**BCII ANNIE 01J**  
2022 NAILE Grand Champion Purebred Simmental Heifer  
Dam of Lot 52

KOVE Annie 38N is a Purebred Simmental that blends the boundaries of elegance and stoutness, delivering a dynamic package that will be a stellar addition to not just a string of show heifers, but a breeding arsenal as well. She comes with the extra stout features, being humongous footed, bold in her ribcage and extra burly in her muscle pattern. She hits us with all the qualities that are making Revelation 2K the go to Simmental sire in the business for siring the most elite show heifers. Her quality comes honestly though, as her dam, BCII Annie 01J was the 2022 NAILE Grand Champion Purebred Simmental Heifer for Matt Koverman. This is a high end show heifer prospect that has revenue generation written all over her.



## KOVE ANNIE 38N

PB SM | ASA: 4609494 | DOB: 3/8/25

TL REVENANT 35  
**REVELATION 2K**  
RIED BANDED MAE



JSUL SOMETHING ABOUT MARY 8421  
**BCII ANNIE 01J**  
CLAC ANNA MARIE 437E



**PO Box Z**  
**De Soto, KS 66018**

PRESORTED  
First Class  
US Postage  
PAID  
Slate Group

**12.21.25**

**3:00 P.M. EST**  
**SCHAEFFER SALE FACILITY**  
**AT THE FARM IN HAGERSTOWN, INDIANA**



**Tim Schaeffer: (765) 541-0738 // Nate Tice: (717) 926-0874**  
**Ian McKenzie: (217) 851-2155 // Quinton Ball: (309) 582-6826**



**Graham Blagg: (530) 913-6418 // Jered Shipman: (806) 983-7226**  
**Tim Anderson: (605) 682-9343**