



CHAROLAIS

47th NATIONAL SALE - DENVER, COLORADO



JANUARY 17, 2026 • 2:00 P.M. MST

NWSS STOCKYARDS EVENT CENTER

Sale

JANUARY 17, 2026
2:00 P.M. MST
NWSS STOCKYARDS EVENT CENTER
INFORMATION

SALE MANAGEMENT:

CK SALES AND MARKETING
Colt Keffer - 765-376-8784
colt@cksalesandmarketing.com



AUCTIONEER:

Justin B. Stout, Overland Park, KS
913-645-5136

CHAROLAIS JOURNAL REPRESENTATIVES:

David Hobbs: 913-515-1215
Cody Beck: 765-719-1622
Hadley Schotte: 785-562-6632
Todd Kluser: 541-410-5605
Isaac Hughes: 662-660-3164

WATCH THE SALE & BID ONLINE:



NATIONAL SALE SPONSOR:

American-International Charolais Association
Charolais Journal

EXECUTIVE VICE PRESIDENT:

Brett Spader: 816-464-2474 Ext. 101

VICE PRESIDENT OF OPERATIONS:

David Hobbs: 816-464-2474, ext. 200

GENETIC CONDITIONS: All lots selling have been tested for Progressive Ataxia. In regard to the choice lots, all sellers must have tested or be willing to test before the buyers selection is finalized.



Welcome

It is an exciting time for our breed, for our breeders, and for the beef industry. As an Association, we are committed to telling a clear and data-driven story of the value Charolais genetics deliver—from the cow-calf sector to the packer rail. Today, that story is resonating more strongly than ever.

Over the past year, AICA has sharpened its focus on providing information and tools that empower commercial cattlemen to make profitable, evidence-based decisions. Through improved data collection, expanded genomic integration, and our growing library of data initiatives, we are demonstrating real, measurable value for Charolais-influenced cattle across the entire supply chain. The momentum behind this work is impressive, and the outcomes show up where it matters most: in feedyard performance, on the rail, and in producer profitability.

One of the most important conversations in the beef business today is the emerging need to increase and accurately understand red meat yield. For years, our industry has heavily emphasized marbling and quality grade—important traits, but ones that have sometimes come at the expense of industry efficiency, real muscling, dressing percentage, and overall red meat yield and profitability due to resource utilization. As cattle are fed longer and costs intensify, those unintended consequences have never been more apparent.

This is precisely where Charolais genetics excel. At a time when every day on feed matters and every pound of sellable product counts, Charolais-influenced cattle are proving to be part of the industry's most profitable path forward.

Our recently updated Power of Yield study (Fall 2025) adds even more clarity to this advantage. In just the past eight months, the study shows a 15% increase in cutout value for Charolais-sired cattle due to red meat yield advantages. This reinforces what many have known for decades: yield matters, and Charolais delivers it consistently and predictably.

With the U.S. national cowherd is now at a 74-year low, and the average age of beef producers has risen to 62 years old. In this environment, efficiency is no longer optional, it's essential. We have to do more with less. That's why heterosis and systems-based breeding approaches are more important than ever before. Utilizing registered Charolais bulls remains one of the most powerful tools our industry has to improve sire impact, feed efficiency, and end-product merit all at once.

The story is simple: Charolais genetics solve real-world problems.

They create heavier, more efficient calves. They add red meat yield without sacrificing quality. They thrive in modern production systems. And they provide the heterosis and versatility commercial producers need to stay profitable in a rapidly changing industry.

As you look through this year's National Sale offering, know that you are viewing some of the breed's very best, the cattle that will continue pushing our industry forward. Thank you to the breeders, buyers, consignors, and supporters who make this event possible. Your commitment to excellence not only strengthens our breed but also enhances the performance and profitability of the entire beef supply chain.

We are proud of where Charolais stands today, and we are even more excited about where we are headed.

Brett Spader
Brett Spader

Executive Vice President, AICA

SCHEDULE OF EVENTS

WEDNESDAY, JANUARY 14 (Afternoon)

AICA Hospitality Tent Open
Yards Herd Sire Row

THURSDAY, JANUARY 15

9:00 a.m. – 5:00 p.m. AICA Hospitality Tent
Yards Herd Sire Row
1:00 p.m. National ROE Pen Processing
NWSS Yards Processing Tent

FRIDAY, JANUARY 16

8:30 a.m. 57th National Show Check-in
Livestock Center – Charolais Stalling Area
9:00 a.m. – 5:00 p.m. AICA Hospitality Tent
Yards Herd Sire Row

SATURDAY, JANUARY 17

8:00 a.m. – 5:00 p.m. AICA Hospitality Tent
Yards Herd Sire Row
8:00 a.m. National ROE Pen Show
NWSS Stockyards Event Center
2:00 p.m. 47th National Charolais Sale
NWSS Stockyards Event Center

SUNDAY, JANUARY 18

8:00 a.m. National Western Junior Charolais & Percentage Charolais Heifer Show
CoBank Arena

MONDAY, JANUARY 19

9:00 a.m. 57th National Charolais Show
CoBank Arena

Breeder INDEX



BIG HOUSE SHOW CATTLE

Lot 19

Braden House: 979-676-1450



BILL KING RANCH

Lot 23

Bill King: 505-220-9909

Tom Spindle: 505-321-8808



BOYERT SHOW CATTLE

Lot 15

Jared Boyert: 330-416-4105



CAPROCK CATTLE CO.

Lots 8 & 20

Jon Dietrich: 570-412-3315

Chris Polzin: 612-916-0105



CHRISTENSEN CHAROLAIS RANCH

Lot 21

Wade Christensen: 605-730-1801



Barley Farms

CIRCLE F FARMS

Lot 10

Woody Folsom: 912-253-8166

Kevin Asbury: 850-252-7290

Floyd Wampler: 423-612-2144



CK CATTLE

Lot 15

Chris Effling: 605-769-0142



DEBRUYCKER CHAROLAIS

Lot 11

Brett DeBruycker: 406-590-3214

Kesler Martin: 406-450-4482



EATON CHAROLAIS RANCH

Lot 9

Lee Eaton: 406-939-0838

Scott Eaton: 406-989-0407

Shane Eaton: 406-939-2479



FOX HOLLOW FARMS

Lot 12

Stephen Mellot: 918-409-6068

Randy White: 205-706-5955



FULL CIRCLE CATTLE CO.

Lot 3

Taylor Stabel: 620-260-6815



HEBBERT CHAROLAIS

Lot 14

Matt Hebbert: 308-458-8812

Lacy Hebbert: 308-458-8823



HUBERT CHAROLAIS RANCH

Lot 5

David Hubert: 785-672-2540



J&J TRUST

Lot 17

Jon Proehl: 605-933-5058



JMAR GENETICS

Lot 6

Jim Johnson: 434-546-2341



KOLT CATTLE CO.

Lot 22

Nate Kolterman: 402-641-0146

Chad Hirschfeld: 402-366-9664



LEDOUX RANCH

Lot 4

Andy LeDoux: 785-527-3188



NEXTGEN CATTLE

Lot 18

Derek Thompson: 785-213-1753

Joe Epperly: 303-884-3900



NORTH GROVE CHAROLAIS

Lots 2 & 3

Dustin Fischer: 612-716-7401

Brandon Fischer: 320-224-9334

Dennis Fischer: 612-716-7396



PRAIRIE COVE CHAROLAIS

Lot 8

Tyler Bullick: 403-501-0660



PRAIRIE VALLEY FARMS

Lot 24

David Mason: 605-680-0780



SCHNUELLE RANCH

Lot 3

Gabe Schnuelle: 402-520-4871



SCHURRTOP RANCH

Lot 16

Marty Schurr: 308-362-4330

Ryan Schurr: 308-320-4067



THOMAS RANCH

Lot 4

Cally Kindred: 605-222-1515



THREE FIRES CATTLE

Lot 13

Kurt Schwartz: 660-424-3422



WRIGHT CHAROLAIS

Lot 1

Derry Wright: 816-456-3792

Chris Peuster: 816-529-2190



ZEHNDER WAAGE PARTNERSHIP

Lot 7

Chad Zehnder: 612-554-2154

Joe Rupp: 580-370-6409

Ryan Waage: 218-689-1530

Ross Waage: 218-689-2832

Breeder
INDEX



SALES MARKETING

What an honor it has been to work with the breeders that have come together to put forward what I believe to be the highest quality National Sale offering ever assembled. From top to bottom, this is the most dynamic, cutting edge, and right for the times assortment of genetics offered in this format. I firmly believe that no matter what your chosen breeding philosophy is, this sale will feature something that can make a positive impact on your herd for generations to come.

First, thank you to the breeders, you all have been exceptionally easy to work with this year. I feel that there is a profound sense of optimism surrounding the breed, which gives you the reinforcement to offer your best genetics. Second, thank you to the National Sale Committee. Your guidance and input have helped shape this incredible event. I am proud to say that every member of the National Sale Committee is also a consigner. Finally, thank you to the American-International Charolais Association for allowing me to assist with this sale. Brett Spader and his entire staff have been intimately involved with putting together the sale. I firmly believe that the tools being developed and the information being gathered at the AICA are at the forefront of the industry. Progress is being made like never before within the breed, and I challenge the membership to utilize those tools to help continue this progression.

The National Sale will be held in conjunction with the National Show this year. I would expect an excellent crowd of Charolais enthusiasts to be in attendance. The National Western Stock Show will again host out events; I encourage everyone to attend, if nothing else, to see the exceptional facilities built in Denver. If myself or any of the AICA Field Staff can be of assistance ahead of the sale, please do not hesitate to reach out to us.

Colt Keffer
Colt Keffer

CK SALES & MARKETING, LLC.



A TRIBUTE TO

Troy Thomas



Troy Thomas played a significant role in many National Sales throughout the years. His influence will be felt for years to come as the cattle he marketed through this event will have an impact for generations.



Kate Roberts

Lot 1

CHOICE OF THE *A History of Proven Production*



WC BRENDA 4035 P —

Lifetime production has exceeded \$500,000



WC LADY BLUE 0506 —

Lifetime production has exceeded \$400,000



WC ASTA 0505 P —

Lifetime production has exceeded \$225,000

Throughout my involvement with the National Sale, few lots have gotten me as excited as this years Lot 1. The choice of the entire Wright Charolais cowherd. I am a firm believer that this herd possesses the best the breed has to offer, I am certain, whomever is lucky enough to be the last bidder will forever change the future of their operation and potentially the breed. Derry and Chris believe that with the current excitement surrounding the breed, along with its increased acceptance in the marketplace, now is the time to open the gates and give you the opportunity of a lifetime.

The crew behind the WC prefix has built one of the most formidable cowherds of any breed The history they have already written is highlighted by the donors pictured on this page. WC Brenda 4035, WC Lady Blue 0506 and WC Asta 0505 have generated over a million dollars in income all together. Of the three of them they have over 40 daughters available in this choice. Those three breed legends represent a small example of what the buyer will have the opportunity to select.

WRIGHT CHAROLAIS COWHERD

A Future of Sustained Success



WC CLARICE 0586 —

Dam of the \$50,000 WC Move the Needle



WC BRENDA 9336 P —

Dam of WC Megatron and the \$35,000 one-half interest WC Brenda 4287



WC CLARICE 9349 P —

Dam of the \$29,000 WC Explosion 4322



WC MISSY 8100 —

Daughters by Redemption have averaged \$10,750

The winning bidder has the option to select any of the above pictured females that have already produced a return and are entering their prime production years. Also, available for your selection are WC Sweetheart 8111, dam of the \$29,000 WC Captain Jack, WC Brenda 0716, dam of the \$40,000 WC Artillery and several more highly productive, dual-purpose females. The potential return on investment from this lot truly is limitless. Wright's success in the production industry as well as the show realm, will appeal to the entire industry. With the trajectory of both this program and the breed in general, I'm not sure that there will be another opportunity presented of this caliber for the foreseeable future.

SELLING:

- 50% Interest in the Buyers Choice of Any Female Fully Owned by Wright Charolais.

Buyer has the option to double the bid price and take 50% embryo interest of two females or 100% interest and full possession of one. If the buyer selects 100% interest in a female, Wright Charolais will retain two flushes with a minimum of 14 transferable embryos.

Presented by
Wright Charolais, Richmond, MO

Lot 1

Lot 2

NGC CAPITALIST 118J



NGC CHECKLIST 406M



NGC MACEY 414M

NGC CAPITALIST 118J ET

DOB. 1/24/21

MALE

TATTOO. 118J

AICA. EM964793

LT SUNDANCE 2251 PLD

LT CITATION 5228 PLD

LT JULIE 2055 PLD

96

M6 NEW STANDARD 842 P ET

M6 NEW GERMAINE 599 P ET

M6 COOL GERMAINE 1145 P ET

CED	BW	WW	YW	MILK	CW	REA	MARB	TSI
15.1 / 20%	-0.4 / 65%	85 / 4%	166 / 1%	37 / 6%	45 / 2%	1.31 / 1%	0.45 / 2%	325 / 2%

Rarely does an opportunity come along that not only can change the direction of your herd but also serve as a solid investment strategy. NGC Capitalist 118J is a sire that has been the talk of the breed for the past couple of years due to his combination of performance, carcass quality and eye appeal. Capitalist further bolstered his resume in March of 2025 when a son, NGC Checklist 406M, commanded \$215,000.

The investment opportunity alone should be enough to peak your interest. North Grove has only sold a mere 125 units to the public, which averaged \$588 per unit at auction. That is \$73,500 in semen sales so far with much more to come, this number doesn't include certificate sales. If this isn't enough, the winning bidder will also get 200 units of semen for in herd use. This presents a rare opportunity to not only make a great financial investment but also positively influence your herd for generations to come.

SELLING:

- Two-Thirds U.S. Revenue Sharing Interest and 200 Units of Semen for In-Herd Use Only.

Presented by
North Grove Charolais, Grove City, MN

Lot 2

Lot 3 NGC CHECKLIST 406M



NGC JACLYN 222K — Dam of Checklist

Without a doubt the most talked about individual in the breed in 2025 was NGC Checklist 406M, the \$215,000 sensation bred and sold by North Grove Charolais and purchased by Full Circle Cattle Co. This one-of-a-kind herd sire created a buzz early last spring that continued on to today. His unparalleled EPD profile, combined with his eye popping actual performance figures, further compliment his look of quality and structural integrity.

The momentum for Checklist started at the 46th National Sale, when 50 units of semen from his sire, NGC Capitalist 118J, commanded \$742 per straw. Checklist took that momentum into sale day as he became one of the most sought-after sires ever offered at auction. The list of breeders and semen companies that tried to acquire him is long and distinguished. In the end Full Circle Cattle was the winning bidder. The current ownership group has decided to strictly limit his semen sales, and we are honored to be able to present the largest offering to date. This will be the last offering of Checklist until the fall of 2026. Do not hesitate to acquire the service of this herd changing sire.

NGC CHECKLIST 406M

DOB. 1/4/24 MALE TATTOO. 406M AICA. M1003767

LT CITATION 5228 PLD
NGC CAPITALIST 118J ET
M6 NEW GERMAINE 599 P ET

96
KC JACK 0891P
NGC JACLYN 222K
NGC CARALYN 919G ET

CED	BW	WW	YW	MILK	CW	REA	MARB	TSI
18.5 / 3%	-3.3 / 20%	78 / 9%	159 / 1%	39 / 2%	46 / 4%	1.07 / 4%	0.39 / 3%	323 / 1%

SELLING:

• 50 Units of Conventional Semen

Package size to be announced on sale day.

Presented by

Full Circle Cattle Co., Lakin, KS

Schnuelle Ranch, Beatrice, NE

North Grove Charolais, Grove City, MN

Lot 3

Lot 4 TR MS MOLLY 4921M ET



BRCHE BERKLY ANN 8507 PLD ET

TR MS MOLLY 4921M ET

DOB. 1/30/24 FEMALE TATTOO. 4921 AICA. EF1356499

LT LONG DISTANCE 9001 PLD
M&M OUTSIDER 4003 PLD
M&M MS CARBINE 1567 PLD

96

TR PZC MR TURTON 0794 ET
TR MS BERKLY 4711B ET
TR MS MONTELLA 1572Y

CED	BW	WW	YW	MILK	CW	REA	MARB	TSI
4.8 / 95%	0.3 / 80%	62 / 55%	114 / 55%	26 / 40%	13 / 95%	0.58 / 85%	-0.01 / 95%	229 / 100%

With a track record of success and a proven pedigree, TR Ms Molly 4921M ET is a sound investment strategy with no guesswork. Molly has a decorated show career thus far. Division Champion in both the Junior and Open shows at the 2025 NWSS, Black Hills Stock Show 5th Overall, South Dakota Spotlight Champion Charolais, South Dakota State Fair Champion 4-H Female and Reserve Open and Champion Charolais at the NILE. She will come into the national show with as much steam behind her as any female in the barn.

In terms of her pedigree, it really is as good as it gets. Molly is a direct daughter of the legendary Berkly donor that has written her own chapter in the history of the breed. Siblings include, BRCHE Berkly Ann, Agribition Supreme Champion, BOY Outlier, leading AI sire, PGC Ms Febe, noted donor of multiple high sellers, PGC Ms Harmony, Junior National champion female, CCWGB Berkly, dam of multiple high sellers and champions, along with several more highlight progeny. This decorated show heifer is destined to join her sisters as a multi-generational donor. Take this opportunity to get in on the ground floor with a quality female and a quality operation.

SELLING:

- 50% Embryo Interest

Presented by
Thomas Ranch and Jady LeDoux, Harrold, SD

Lot 5 CHOICE OF FEMALE HERD



MISS HCR ESTER 0404 PLD



MISS HCR PADEN 2153 PLD



MISS HCR AUDREY 9060 PLD

A perennial sale feature is the choice of the Hubert Charolais Ranch cowherd. Widely regarded as one of the top herds in the breed, David has curated a set of females that produce at the highest levels every year. His attention to detail and rigorous selection processes continue to stack generational quality into every female. The past buyers of this lot have returned their investment in multiples.

To lend reinforcement to the quality of this cowherd, here is a glimpse of the females that you have the opportunity to select and what they produced in the 2025 sale alone.

- Miss HCR Paris 9128 – Daughter sold for \$17,250 to Full Circle Cattle, Lakin, Ks
- Miss HCR Mona 1505 – Daughter sold for \$14,500 to Full Circle Cattle, Lakin, Ks
- Miss HCR Ester 0404 – Son sold for \$13,500 to Larry Herd, College Station, Tx
- Miss HCR Echo 9182 – Son sold for \$11,000 to Koepsell Charolais, Canova, SD
- Miss HCR Leah 0525 – Son sold for \$10,000 to Schmidt Cattle Co., Gordon, Ne
 - Miss HCR Iris 1197 – Son sold for \$10,000 to RK Charolais, Lucas, Ks
 - Miss HCR Lena 0201 – Son sold for \$10,000 to John Allison, New Castle, Ky

SELLING:

- 100% Interest in the Buyers Choice in One Female.

Seller will retain one-quarter interest in any bull calf selected alongside of a cow

Presented by
Hubert Charolais Ranch, Oakley, KS

Lot 5

Lot 6 CHOICE OF FULL SISTERS

JMAR QUEEN 14M11



JMAR QUEEN 22M11



JMAR QUEEN 14M11

DOB. 8/29/21 FEMALE TATTOO. 14M11 AICA. EF1308954

CED	BW	WW	YW	MILK	CW	REA	MARB	TSI
6.3 / 85%	1.2 / 90%	74 / 9%	139 / 4%	7 / 100%	45 / 2%	0.7 / 50%	0.38 / 2%	298 / 3%

JMAR QUEEN 22M11

DOB. 9/30/21 FEMALE TATTOO. 22M11 AICA. EF1309972

VPI FREE LUNCH 708T
FTJ MONTICELLO 1806
FTJ LTRB905 LTBV SHANDY1527

26
WCF MR SILVER GUN 467
DCR MS SILVER LED F136
DCR MS LEDGER C43

CED	BW	WW	YW	MILK	CW	REA	MARB	TSI
0.4 / 100%	2.6 / 100%	88 / 1%	159 / 1%	16 / 90%	51 / 1%	1.01 / 4%	0.43 / 1%	310 / 1%

Last year we welcomed JMAR Genetics as a first time consigner with an exceptional lot. It is an honor to have them back this year with an equally impressive offering. We are going to sell choice and privilege between two full sisters to JMAR Jefferson and JMAR Joshua.

Both JMAR Queen 14M11 & JMAR Queen 22M11 are donor prospects that offer a genetic profile that is second to none alongside proven pedigree depth. Study their EPD package and you will find several traits that are right for the times in the industry. Add to this their proven pedigree, that is anchored by the same genetics that produced both Jefferson and Joshua, and you have a predictable strategy for success. Both females will be available for IVF aspiration immediately after the sale and the buyer can immediately begin collecting and implanting embryos. JMAR Genetics will retain the heifer calves at side. If you're interested in breeding information on the females, contact Jim directly.

SELLING:

•One-Half Embryo Interest in the Buyers Choice of Females.

Buyer has the option to double the bid price and take 50% embryo interest of both females or 100% interest and full possession of one.

Presented by
JMAR Genetics, Appomattox, VA

Lot 6

Lot 7

CHOICE OF BRED HEIFERS



WDZ MS WARROAD 3257



WDZ MS PLATTE 4100



WDZ MS FLATLAND 4057



WDZ MS BROOKS 4131

I firmly believe that this choice lot could be the highest revenue generator in the entire sale. The outstanding female base that represents it further reinforces that thought. In the past three Zehnder Waage Bull Sales, nine head have sold to purebred breeders from the first calf heifer division. That is the same group you have the opportunity to select from. It is the goal of every operation to improve the quality of each generation, that goal is continually being achieved in the Zehnder Waage herd.

The choice will consist of 50 head of first calf heifers; here are just a few of the females you will have the opportunity to choose from.

- **WDZ Ms Warroad 3257** – A calving ease bred female with 10 traits in the top one-third of the breed.
- **WDZ Ms Platte 4100** – Double digit calving ease to top 3% WW & YW, and top 2% TSI. Her dam will have a son in Denver.
- **WDZ Ms Flatland 4057** – Excellent growth and carcass figures in tandem with great eye appeal.
- **WDZ Ms Brooks 4131** – A full sister to WDZ Flatland that is very balanced in her EPD profile.

SELLING:

- **100% Interest in the Buyers Choice of One Bred Heifer**

Seller will retain the right to one successful flush at the buyers convenience and the sellers expense. Buyer has until August 1st to make their selection. They are cordially invited to enjoy the hospitality of the Zehnder family and the sights of Minnesota Lake Country.

Presented by
Zehnder Waage Partnership, Stanchfield, MN

Lot 7

JANUARY 17, 2026 • 2:00 P.M. — NWSS SALE COMPLEX 15

Lot 8 M6 MS NEW GERMAINE 484 P



WIA CCR VALHALLA 3123 - Son



VIERRA GERMAINE 80164 - Daughter

Very few females have had the impact like M6 Ms New Germaine 484 P. Since her career as a donor began, she has produced as many dollars' worth of progeny as any female in the breed. She is the dam of the \$135,000 Vierra Germaine 80146, SVY Ms Germaine 236K that sold for \$80,000, the \$50,000 Carr's Ms Germaine 202 P ET, the \$32,000 WIA CCR Valhalla, and many more progeny from \$15,000-\$25,000. Two sons, SVY Historic 241K and CCR GHC Grandview 9032 P are heavily used sires that have had a major impact on the breed. This truly is a cornerstone donor within the breed; her influence will be felt for years to come.

Lot 8

SELLING:

- 8A - One-Quarter Embryo Interest
- 8B - Pregnancy Due January 15, 2026, by DC/CRJ Rooster H3118 P
- 8C - 3 IVF Unsexed Embryos by WC Encompass 0507 P

Presented by
Caprock Cattle Co., Hecla, SD
Prairie Cove Charolais, Alberta, Canada

Lot 9 CHOICE OF FEMALE HERD



A staple lot in every National Sale is the choice of the entire Eaton female herd. Since 1965, the Eaton family has been breeding Charolais cattle centered around a certain breeding philosophy. The cows must be tough, efficient, and highly maternal. They must breed back and be able to raise a calf in an extreme environment. They lead the nation in Dams of Distinction with 682 since 2013.

This year's selection will allow the buyer to choose from over 2,000 mature cows, bred heifers, and 2025 born heifer calves. Of that total number of females, here are how many rank in the top 25% of the breed for each of the following traits.

CE: 1,048, BW: 1,401, MILK: 1,730, MCE: 2,025, TM: 973, MARB: 759

This lot has been a "No Miss" lot for years, with many of the breeds leading firms taking advantage of the opportunity.

SELLING:

- 100% Interest in the Buyers Choice of one Female

Seller respectfully requests that the selection be made prior to May 1st, 2026

Presented by
Eaton Charolais, Lindsay, MT

Lot 9

Lot 10 CHOICE OF LCC MISS LADY 6333 023 FL DAUGHTERS



HF MISS LADY 3770 ET - Daughter

LCC Miss Lady 6333 023 FL is a highly productive donor that now resides with Circle F Farms. Raised by Larson Cattle Company, she produced 10 sons that sold through the Fink Beef Genetics Production Sale including LCC 0405 of 6333 GS now owned by 10/10 Ranch and Elliot McClure. This exceptional donor offers breed leading statistics including a .68 Marbling EPD that would rank her well within the top 1% of the breed. Circle F is a program that will be a sustainable force in our breed for years to come and progeny by this donor will be heavily featured. There are seven fall of 2024 daughters sired by JMAR Jefferson 8M11 and LT Blue Value 7903 ET available in this choice lot. Each female will be available for aspiration directly after the sale.

SELLING:

- 100% Interest in the Buyers Choice of Females.

Presented by
Circle F Farms, Baxley, GA


Lot 10

Lot 11

CHOICE OF DEBRUYCKER DONORS



LHD MS ZEUS E1309



DC/MD MS LEDGER E1431

Kesler Martin of DeBruycker Charolais and I have been in talks about the National Sale for a couple of years. After good discussions and a trip to Conrad, Montana, we finalized what I think will be a very popular consignment to this year's event. DeBruycker Charolais is going to offer choice between two proven donors, all of whom have produced well for them. We are extremely excited to have the DeBruycker family join us in the National Sale.

LHD Ms Zeus E1309, F1248601 – A highly productive donor with an excellent EPD package. Her sons averaged \$10,750 in the 2025 bull sale. Her dam produced until 15 years of age and is the dam of the longtime herd sire DC/JDJ Mars G1241.

DC/MD Ms Ledger E1431, F1268481 – This cow alone is worth a trip to Conrad. Kesler stated many times that she could be the best looking cow they have ever produced, and that is hard to argue with. I think this female can be a big time producer, no matter your chosen marketing path.

SELLING:

- 50% Embryo Interest in the Buyers Choice of Donors

Buyer has the option to double down and take 50% of two females or 100% of one. Buyer is guaranteed 20 transferable embryos per donor in a calendar year.

Presented by
DeBruycker Charolais, Dutton, MT

Lot 11

Lot 12 CHOICE OF FEMALE HERD

FH MS 842 COOL STANDARD 2022 P



FH MS 7143 FABULOUS 2126 P



FH MS 467 FABULOUS 1120 P ET



We are always in search of new and progressive operations to be included in the National Sale. For the past several years I have been intrigued with what Fox Hollow is building in Northeast Oklahoma. So, after a trip to the ranch, I knew that their operation was National Sale caliber. Founded by Don and Janet in 1980, Fox Hollow was resurrected by Stephen and Michal Mellott in 2008. Under the expert guidance of Randy and Dinah White, they have built an exceptional female base of over 200 cows. This is an operation that is on the rise and dedicated to the breed, I strongly encourage everyone to check them out.

In an effort to help guide any prospective buyer, we wanted to highlight a handful of the cows that are available for your selection. We felt that the three females we chose offer a balance of high end phenotype alongside an excellent pedigree and EPD package.

- FH Ms 7143 Fabulous 2126 P, F1367482 – Top 1% WW, 1% YW, 5% REA, 3% MARB & 7% TSI
- FH Ms 842 Cool Standard 2022 P, F1344972 – Top 15% WW, 20% YW, 25% MTL, 4% MARB & 7% TSI
- FH Ms 467 Fabulous 1120 P ET, EF1332450 – Top 1% WW, 2% YW, 1% REA, 6% MARB & 1% MARB

Lot 12

SELLING:

- 100% Interest in the Buyers Choice of Females

Presented by
Fox Hollow Farms, Catoosa, OK

Lot 13

CHOICE OF HEIFER PEN

FIRES STARSTRUCK 437M OF NG

DOB. 9/25/24 FEMALE TATTOO. 437M AICA. EF1367152

LT PATRIOT 4004 PLD
LT ATLAS 0251 PLD
LT MOLLY 7031 PLD



CCC WC RESOURCE 417 P
SVY STARSTRUCK 102J
SVY STARSTRUCK 409B

CED	BW	WW	YW	MILK	CW	REA	MARB	TSI
11.4 / 50%	-1.2 / 50%	75 / 15%	133 / 15%	28 / 30%	36 / 20%	1.2 / 2%	0.2 / 30%	293 / 15%

FIRES CK HARLEY BEAR 439M

DOB. 9/18/24 FEMALE TATTOO. 439M AICA. EF1373265

LT RUSHMORE 8060 PLD
RBM KEYSTONE H41
RBM JASMINE F251



BRCHE WHITE BEAR 8505 PLD ET
WHITE ROSE DIXIE BEAR 111J
WHITE ROSE DIXIE

CED	BW	WW	YW	MILK	CW	REA	MARB	TSI
14.5 / 25%	-0.4 / 65%	81 / 6%	139 / 9%	26 / 40%	47 / 3%	1.16 / 2%	0.2 / 30%	310 / 3%

FIRES WIND 450M

DOB. 9/12/24 FEMALE TATTOO. 450M AICA. EF1370864

TRI-N BROOKS 34H
WDZ FLATLAND 2044
UG MS HIGH STANDARD 4031



DCR MR GENERAL RIDGE G117
WIA LADY WIND 186
ORR'S LADY WIND 835P

CED	BW	WW	YW	MILK	CW	REA	MARB	TSI
5.9 / 90%	0 / 75%	73 / 20%	128 / 25%	23 / 60%	32 / 30%	0.76 / 45%	0.13 / 55%	270 / 45%



FIRES STARSTRUCK 437M OF NG



FIRES CK HARLEY BEAR 439M



FIRES WIND 450M

Three Fires Cattle have once again brought us a dynamic pen of heifers that should grab your attention in Denver. Expertly mated, with both eye appeal and genetic merit in mind, these females should fit any scenario. This set of fall born heifers were all AI'd to WC Encompass in November.

Fires Starstruck 437M of NG - Stemming back to the legendary Starstruck cow family, 437M is a very attractive bold sprung female, with a balanced EPD package that yields 11 EPD's in the top 35% of the breed.

Fires CK Harley Bear 439M - Keystone daughters are among the favorites in the herd as they enter production, and this female is not an exception. Excellent build and power, in tandem with an excellent EPD profile that is highlighted by a top 2% TSI.

Fires Wind 450M - One of the first daughters of the \$25,000 WDZ Flatland to be offered to the public. This heifer is ultra complete with plenty of power and function. Her maternal grandsire was the sire of the \$38,000 JBarW Kill Shot.

SELLING:

- 100% Interest in the Buyers Choice of One Heifer

Presented by
Three Fires Cattle, La Cygne, KS

Lot 14

CHOICE OF FIRST & SECOND CALVING COWS



In an era dominated by pushing the performance envelope, Hebbert Ranch has never forgotten the most important element of production. The Cow. Every decision that is made on the ranch centers around producing the best female possible. Yes, performance traits are extremely important, especially in the Charolais breed. However, the Hebbert's know without a strong maternal base you will never be able to maximize performance.

I had the pleasure of assisting Three Fires Cattle with the selection of their purchase in last years sale. We were very impressed with the consistency of quality and the easy doing nature that is inherent amongst the entire cowherd. Matt and Lacy will tell you that they are very impressed with the daughters of CCC Probity 9506 P, LT Judge 0691 P, CCC Ad Astra 1027 P and HC Blue Stone 0431. They are equally excited to see the progeny by HC Bob Wills 4541, CCC Sunflower 3058 P, along with developing the CCR Executive 2525 P and Fink Cowntown 231 ET offspring.

This choice lot has been a mainstay for years, simply because it works so well for the firms that buy it. Make no mistake, you are dealing with some of the best people in the world, some of the best cattle you will find, and some of the most impressive scenic views in the west.

Lot 14

SELLING:

•100% Interest in the Buyers Choice of any First or Second Calving Female in the Herd.

Seller respectfully requests that your selection be made by May 15, 2026.

Presented by
Hebbert Charolais. Hyannis, NE

Lot 15 CAG BOY NARCO 5646N ET



Though it may not be every year, whenever we have the chance to feature a truly special herd sire in the National Sale, we are eager to take advantage of the opportunity. When the field staff and I were approached by Chris Effling & Jared Boyert about an exceptional PA Free prospect, we had to say yes. CAG BOY Narco 5646N ET has this pair of cattlemen as excited as any herd sire in recent years and we are just as anxious to feature him in this year's event.

Narco is sired by the International Champion Bull, SVY Mayfield 30H, who is creating his legacy as one of the most impressive sires in recent history. The bottom side of his pedigree offers just as much excitement. His dam is the famed CAG Bubbles 9950G, who claimed 5th Overall Owned Female honors at the 2020 Junior National as a fall calf. An owned daughter of the legendary Dory, Bubbles continues to establish her importance in the Charolais breed.

Phenotypically, Narco brings tremendous upside potential. Stout featured and big ribbed, while still having the eye-appeal and build that captures the eye of the most stringent cattlemen. Weaning off the cow at over 800 pounds, his tandem of performance and structural flexibility makes him even more intriguing. His standout quality and genetic package give him the versatility to compliment many popular pedigrees. This opportunity offers not only tremendous return on investment potential, but also the ability to make a positive, lasting genetic impact moving forward.

CAG BOY NARCO 5646N ET

DOB. 2/24/25 MALE TATTOO. 5646N AICA. EM1015620

CCCWC RESOURCE 417 P
SVY MAYFIELD 30H
SVY MIA 424B

96
TR CAG CARBON COPY 7630E ET
CAG BUBBLES 9950G
BRCH TR DORY 6501

CED	BW	WW	YW	MILK	CW	REA	MARB	TSI
13.8 / 30%	-3 / 20%	60 / 65%	97 / 85%	29 / 30%	21 / 70%	0.88 / 20%	0.17 / 40%	267 / 55%

SELLING:

• 50% Interest & Buyers choice of possession

Selling 1/2 semen interest and 1/2 possession with option of either spring or fall breeding season.

Presented by
CK Cattle, Highmore, SD
Boyert Show Cattle, Pleasantville, IA

Lot 16 CHOICE OF BRED HEIFERS



It is common to think that in any terminally driven scenario maternal strength gets pushed aside. For the most part that is inaccurate, as no matter how terminal the breeding philosophy, cows still have to raise calves and get them to the weaning pen. This was one big take away from my visit to Schurrtop Charolais this past fall.

Best known for producing bulls which sire calves that excel on the rail, their cow herd is very good and potentially overlooked in terms of maternal value. Much like the data collected on the carcass side, they have taken udder scores for over 30 years and are working to get that incorporated into the AICA database. I am a firm believer that this herd can produce dual-threat cattle that work in both terminal and maternal scenarios.

Lot 16

SELLING:

- 100% Interest in the Buyers Choice of One Bred Heifer

Seller respectfully requests your selection be made by May 15, 2026

Presented by
Schurrtop Ranch, Farnam, NE

Lot 17 CHOICE OF BRED AND OPEN FEMALES

LT JJ ATLAS J413

LT JJ ESTRADA J439

LT JJ PATRIOT J424

LT JJ PATRIOT J432

In terms of production value, there may not be a donor battery in the breed that can match up with J&J Trust. For the past several years, Jon Proehl has been stockpiling high caliber donors and mating them to some of the breeds top bulls. Those acquisitions and breeding decisions have yielded an excellent cow herd, and they get better with every generation. Once again, we are going to feature the choice of both the bred and open heifers from the top of the J&J Trust herd. Below is a list of donors that make up the bulk of the selection and what they produced in the 2025 Lindskov's LT Ranch production sale.

LT Airey 5226 PLD — New to the J&J lineup, sons averaged \$9,833

LT Ballet 9219 PLD — A proven producer her sons averaged \$11,160 including J424 & J432 pictured above.

LT Brenda 8034 PLD — One of the breeds leading donors her son, J439, brought \$14,500

M&M Ms. Carbine 1567 PLD — A breed legend that produced sons that averaged \$10,160

SELLING:

- 17A - Buyers Choice of Bred Heifers
- 17B - Buyers Choice of Open Heifers

Seller respectfully requests that your choice be made by February 15th, 2026

Presented by
J&J Trust, Parkston, SD

Lot 18 CHOICE OF SVY HISTORIC DAUGHTERS



NG HISTORIC GIRL 1393N

NG HISTORIC GIRL 1393N

DOB. 12/2/24 FEMALE TATTOO. 1393N AICA. EF1374142

NG HISTORIC GIRL 9132N

DOB. 12/5/24 FEMALE TATTOO. 9132N AICA. EF1374140

NG HISTORIC GIRL 005N

DOB. 12/2/24 FEMALE TATTOO. 005N AICA. EF1374143

NG HISTORIC GIRL 1082N

DOB. 11/25/24 FEMALE TATTOO. 1082N AICA. EF1374141

LT COUNTDOWN 9712 PLD
SVY HISTORIC 241K
M6 MS NEW GERMAINE 484 P

96
RBM KEYSTONE H41
FIRES COLONEL'S GIRL 250K
RIO MS COLONEL F052

CED	BW	WW	YW	MILK	CW	REA	MARB	TSI
15.6 / 15%	-3.5 / 15%	71 / 25%	132 / 20%	19 / 85%	27 / 45%	0.74 / 50%	0.23 / 20%	271 / 45%



NG HISTORIC GIRL 9132N



NG HISTORIC GIRL 1082N

NextGen Cattle is entering a new era in their program's development. They are stepping up their ET program by infusing high impact, cutting edge sires to complement their solid cow base that has focused on growth, and carcass traits. In many respects the guys at NextGen lead the way in market trends, and this lot is no exception. At the time of writing this, these will be the first progeny of SVY Historic 241K to be marketed in the states.

Historic has been one of the most heavily used sires in the breed and I expect that trend to continue for several more years. His ability to blend calving ease with growth and carcass quality, is rivaled by very few. The dam of these flush sisters is an outstanding daughter of RBM Keystone out of a Rio Colonel x NWMSU Doc Silver cow. The DNA will come back on these females before the sale, and we expect them to excel in terms of their EPD profile.

SELLING:

- 100% Interest in the Buyers Choice of Females

Presented by
NextGen Cattle, Paxico, KS

Lot 19 CHOICE OF FALL BORN ET FULL SISTERS



AWR MS COOLEY CUB 835F



DTR MR BRIGHTSIDE 1107G2



Full Sister to the Heifers Being Offered

After their acquisition of AWR Ms Cooley Cub 835F, Big House Show Cattle moved quickly to scale up her influence in their program. The first set of ET's were born in the spring of 2025 and placed in quality homes around Texas. The largest and deepest set of progeny were born this past fall, representing the opportunity presented in the National Sale.

AWR Ms Cooley Cub 835F is a daughter of ONL AWR Cool Cub 7C and by Ms Cooley Jackpot 1410M10 ET, making her a maternal sister to the immortal 3R's Angelina 343A, better known as Jojo. This dynamic female offers an exquisite look of quality in tandem with a powerful build and impeccable structure. This mating to the 120th ROE Sire DTR Mr Brightside has yielded an upper echelon set of fall born full sisters that will run at any level.

SELLING:

- 19A - Buyers First Choice of Heifers from the Group of Full Sisters
- 19B - Buyers Second Choice of Heifers from the Group of Full Sisters

In both choices, seller will retain one-half embryo interest in the females.

**Presented by
Big House Show Cattle, Iola, TX**

Lot 19

Lot 20

CHOICE OF R LAZY B FEMALES

RLB MS SHANDY 729E



Caprock Cattle Co. recently made a splash with the acquisition of the entire R Lazy B herd from longtime breeder Robert Birkliid. With over 100 years of ranching history, the Birkliid's have spent the last 30 plus years breeding excellent Charolais cattle that have worked for generations of customers. In acquiring this herd, Caprock have positioned themselves as a major force in the region in terms of Charolais production.

Caprock Cattle is an ever evolving operation that has committed significant resources to the expansion and improvement of their Charolais herd. With this choice lot, they are extending you the opportunity to take part in their future successes. They are going to sell one-half embryo interest in any female acquired in the R Lazy B transaction. It will consist of around 200 total females to select from including some of the following highlights.

RLB Connie 550C PLD – F1216562
RLB Shandy 729E – F125766

RLB Miss Emmy 306L – F1347110
RLB Ms Patti 910G – F1283030

RLB Ms Maria 339A – F1180469
RLB Miss April 453M – F1362619

RLB Miss Booty 481M – F1360025
RLB Miss Masters 440M – F1362621

Lot 20

SELLING:

• One Half Embryo Interest in Any RLB Female

Buyer will receive the first two IVF cycles

Presented by
Caprock Cattle Co., Hecla, SD

Lot 21 CHOICE OF BRED HEIFERS

CCR TIA 445



CCR HELENE 472



CCR TIA 475



In the fall of 2023, the Christensen family made the decision to acquire the entire Eggleston Charolais herd, one of the most established programs in the Dakota's. The Eggleston operation hosted 39 annual production sales, ending in 2024, and Christensen's hosted their first one in April of 2025. Christensen Charolais Ranch will continue to breed the same performance driven, eye appealing Charolais cattle made popular by the EC brand. We welcome them to the National Sale, as a first time consigner, with the choice of their entire bred heifer crop.

You will have the opportunity to select from over 60 head of bred heifers that are due to calve from the first of February to the end of April. Sires of these bred heifers include CCR GHC Grandview 9032 P, SCC Tioga 64H PLD, and RR Silver City 0013. Several of them will be carrying the service of NGC Combat 317L, a Tank son with an exceptional EPD profile. The three heifers that are pictured represent a good example of what is in store for the buyer of this lot.

- CCR Tia 445, F1362764 – 14 total traits within the top one-third of the breed.
- CCR Helene 472, F1362771 – A Silver Gun granddaughter with top 5% MARB & 4% TSI.
- CCR Tia 475, F1363025 – An extremely maternal female that is in the top 1% of the breed for Milk.

SELLING:

- 100% Interest in the Buyers Choice of Any Bred Heifer

Presented by
Christensen Charolais Ranch, Wessington, Springs, SD

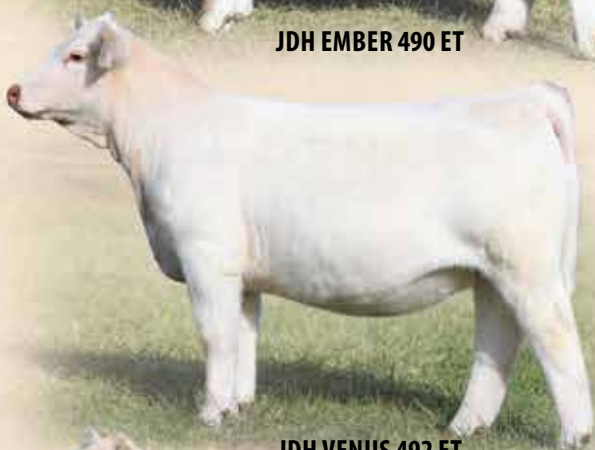
Lot 21

Lot 22

CHOICE OF HEIFER PEN



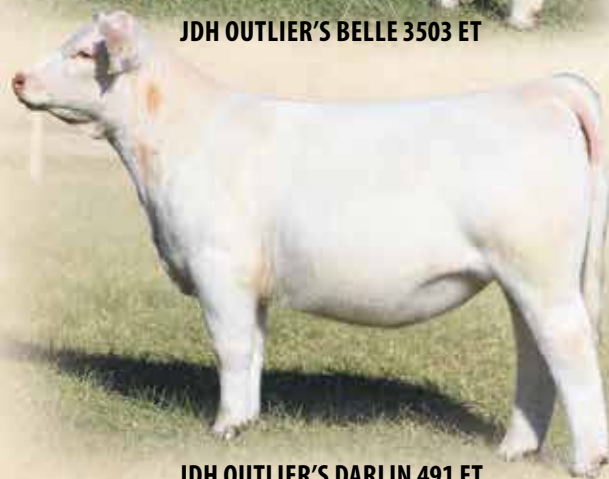
JDH EMBER 490 ET



JDH VENUS 492 ET



JDH OUTLIER'S BELLE 3503 ET



JDH OUTLIER'S DARLIN 491 ET

JDH EMBER 490 ET

DOB. 4/13/25 FEMALE TATTOO. 490 AICA. EF1375556

JDH VENUS 492 ET

DOB. 3/1/25 FEMALE TATTOO. 492 AICA. EF1375685

CML DIABLO 2X
TR MR DIABLO 2742Z ET
HF MUSTANG SALLY 904 PLD

96

LT RUSHMORE 8060 PLD
WC CCC SWEETHEART 4163 P ET
BALDRIDGE SWEETHEART 7M

CED	BW	WW	YW	MILK	CW	REA	MARB	TSI
18.5 / 3%	-4.2 / 10%	51 / 90%	93 / 90%	26 / 40%	14 / 95%	0.74 / 50%	0.03 / 90%	255 / 80%

JDH OUTLIER'S BELLE 3503 ET

DOB. 3/29/25 FEMALE TATTOO. 3503 AICA. EF1375684

JDH OUTLIER'S DARLIN 491 ET

DOB. 4/3/25 FEMALE TATTOO. 491 AICA. EF1375686

M&M OUTSIDER 4003 PLD
BOY OUTLIER 812 ET PLD
TR MS BERKLY 4711B ET

96

LT RUSHMORE 8060 PLD
WC CCC SWEETHEART 4163 P ET
BALDRIDGE SWEETHEART 7M

CED	BW	WW	YW	MILK	CW	REA	MARB	TSI
12.7 / 40%	-2.7 / 25%	58 / 75%	107 / 65%	30 / 25%	15 / 90%	0.84 / 30%	0.03 / 90%	250 / 90%

The Charolais show heifer market is on fire right now, and I thought having a set of high end show prospects would be a nice addition to this sale. After a trip to Garland, Nebraska to view these full sisters at Kolt Cattle Company, I am excited to offer them in the National.

These March & April born maternal sisters are sired by BOY Outlier 812 ET, and TR Mr Diablo 2742Z ET. The donor dam behind these females is WC CCC Sweetheart 4163 P ET, a Rushmore daughter by the immortal Baldridge Sweetheart 7M. In the Kolt Cattle "Simple Choices" sale held this past fall, a sister to these females commanded \$60,000 and will be heavily campaigned throughout the show year. If you're searching for an easy path to the backdrop and a potential cornerstone donor, look no further than this pen of show heifer prospects.

SELLING:

- 100% Interest in the Buyers Choice of Females

Presented by
Kolt Cattle Co., Garland, NE
Chad Hirschfeld, Benedict, NE

Lot 23

CHOICE OF THE FEMALE HERD



Without a doubt one of the more enjoyable and informational visits you will ever go on is a trip to Moriarty, New Mexico to tour the Bill King Ranch. Bill and his family are multi-generational ranchers that know how to raise quality stock. With around 250 registered Charolais females their operation focuses on selling several hundred bulls a year to sharp cattlemen and women who make a living in the business.

Many of the top producers in the country have purchased this selection over the past few years. Last year Boyert-Core invested in the opportunity in hopes of finding the next great donor to anchor their already impressive lineup. Bill selects cattle with both eye appeal and balanced performance traits, making this an excellent source of females no matter if your end goal is the show ring or selling commercial bulls.

SELLING:

- Buyers Choice of Any Female. Buyer Has the Option to Select 100% of One Female or 50% Interest in Two.

Presented by
Bill King Ranch, Moriarty, NM

Lot 23

Lot 24

CHOICE OF FEMALE HERD



PVFC LEDGER 3238 PLD

PVFC 0206 SYNDICATE PLD



PVFC CAPITAL 3228



PVFC TITAN 4108 PLD



PVCF RAGNAR 4117 PLD

On the heels of the best bull sale in program history, Prairie Valley Farms is proud to once again offer the choice of their entire female herd. Dave agreed to join the National Sale last year with very little history of marketing females to a national audience, his lot commanded \$22,500 with a flurry of bidding activity and ultimately selling to Full Circle. Prairie Valley parlayed that success and attention into a bull sale that broke all previous records set by this storied operation. PVFC Titan 4108 sold for \$28,000 to Sandmeier Charolais and PVFC Ragnar 4117 PLD sold for \$26,500 to Caprock and Prairie Cove, the dams of both of those females will be available this year.

The bulk of the females will be sired by WCR Titan 061, WDZ Great Divide 2071, LT Judge 0691 and WDZ Aerosmith 1109 PLD. As I noted last year, I firmly believe that this is one of the best cowherds in the breed. Dave has masterfully woven the afore mentioned sires into his already highly maternal herd. This breeding plan has created a herd full of cows that are not only phenotypically impressive, but they also push the envelope in terms of their EPD profiles.

SELLING:

- Buyers Choice of 100% Interest in any Female in the Herd.

Presented by
Prairie Valley Farms Charolais, Platte, SD

Lot 24



Watch the Sale on CCI.live!

*The best, the fastest and most
comprehensive marketing & bidding tool!*

How to Bid Online...

- **As a buyer**, you do not need an account or to login to watch the sale but you must have a validated account to bid.
- After you are logged in, you must proceed to the sale page for any and every auction and click **"Get Buyer Number."** Some auctions require a pass-code to obtain a buyer number even after you are approved by CCI.live. Pass codes generally come from the sale manager or ranch for that particular sale.
- CCI.live will operate with ease on a **cellular device, laptop, desktop or tablet.**
- A **modern or current browser** is important and will make your experience better. You do not need to install the app on cellular devices to watch a sale. CCI.live is a browser-based application meaning it will play on most new browsers, but you can also download the CCI.live app at the Apple App Store or through Google Play.
- **For successful bidding you must have good Internet service!** It is very important to be stationary. If you are driving and bidding, expect to have some service issues. If you are stationary on a good device, with healthy Internet, expect a very successful bidding environment. If you have slow Internet watch the "asking price" on the screen - it is real time and refresh your browser if you feel like you have some lag.
- **Support line open during all sales. 405-400-9505** - Please contact the ranches for invoices and trucking.

Viewed around the world!



**SALE CATALOG, VIDEOS,
and LIVE BROADCAST...**

all at your fingertips from the sale page at
www.CCI.live! Watch live sales weekly!



www.CCI.live

(405) 400-9505 Text or Call
schedule@cci.live

Over 35 years in livestock marketing!

POUNDS MATTER

PROFIT COUNTS

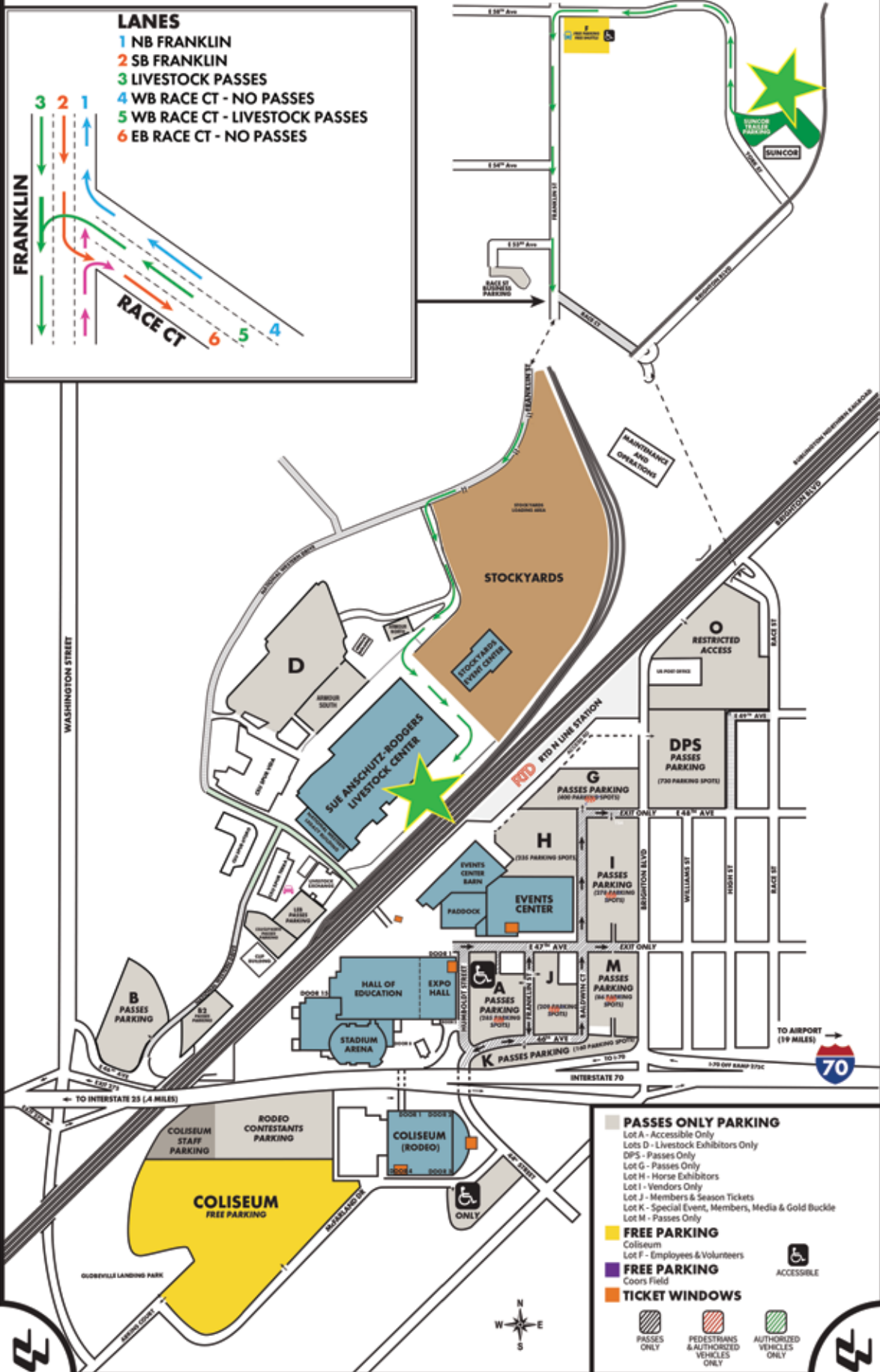
More than anything farmers and ranchers want to hear it straight. No gimmicks. No fluff. The truth and why it matters. So, when it comes to why their next bull should be a Charolais, let's tell them how it is: pounds matter and profit counts. From added weaning weight, to increased red meat yield and higher pay weights - Charolais bulls deliver the pounds that deliver your profit.



816.464.5977 • info@charolaisusa.com
www.CHAROLAISUSA.com
www.POUNDSMATTER.com

© American-International Charolais Association 2025

CHAROLAIS
American-International
Charolais Association





11700 NW Plaza Circle
Kansas City, MO 64153



CHAROLAIS

47th NATIONAL SALE - DENVER, COLORADO

JANUARY 17, 2026 • 2:00 P.M. MST

NWSS STOCKYARDS EVENT CENTER

