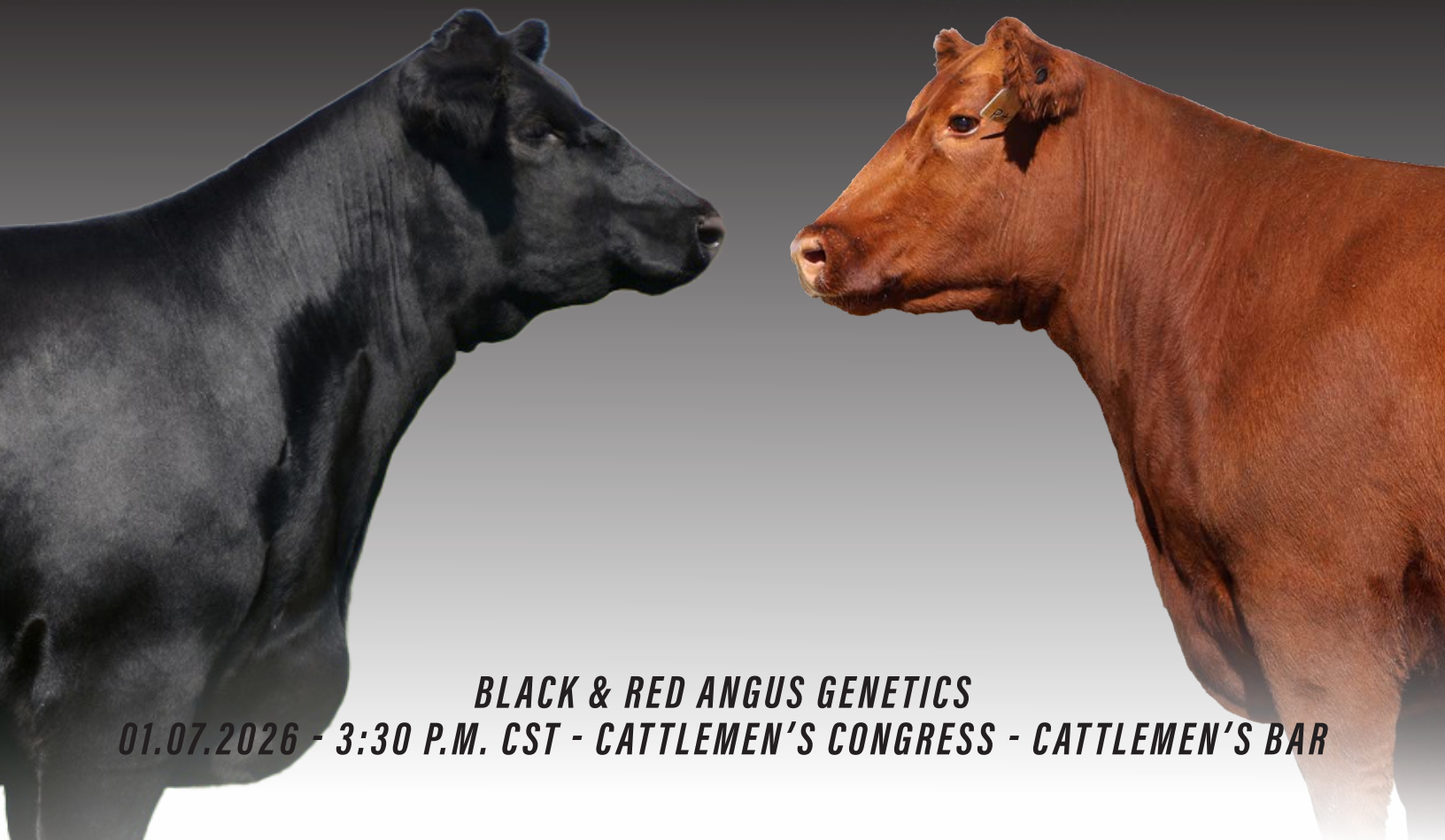




PREMIUM BEEF GENETICS PRESENTS...

THE ESSENTIALS

Volume 2



BLACK & RED ANGUS GENETICS

01.07.2026 - 3:30 P.M. CST - CATTLEMEN'S CONGRESS - CATTLEMEN'S BAR

Welcome!

01.07.2026 - 3:30 P.M. CST - CATTLEMEN'S CONGRESS - CATTLEMEN'S BAR

FAIRGROUNDS LOCATION

3001 GENERAL PERSHING BLVD, OKLAHOMA CITY, OK 73107

AUCTIONEER

STEVEN BONHAM - 405.823.2973

RING STAFF

RYAN DENTON - 918.629.3004

COLTON PRATZ - 405.385.1054

SALE MANAGEMENT

MIKE MARLOW - MARLOW CATTLE SERVICES - 405.880.0108

SARA FROST - DIAMOND A DESIGNS - 209.416.8908

SALE DAY PHONES

MIKE MARLOW - 405.880.0108

SARA FROST - 209.416.8908

PBG OFFICE - AMY POKORNY - 405.385.1238

CLINT SARTIN - 417.849.9966

DUSTY COLLUM - 918.399.3475

WATCH THE SALE LIVE & BID ONLINE

CCI.LIVE



ESSENTIALS VALUED CONSIGNORS

SANDRIDGE LAND & CATTLE - 405.612.5111 - PERKINS, OK

DAVID IMHOFF - 405.760.3508 - STROUD, OK

PINE COULEE ANGUS - 406.780.1230 - 406.425.4292 - ABSAROOKEE, MT

TRADEMARK GENETICS - 281.599.8646 - HEMPSTEAD, TX

GENESIS ENTERPRISES - 918.377.6365 - DAVENPORT, OK

C-4 LAND & CATTLE - 918.399.3475 - PERKINS, OK

SCOTT & REBECCA BOHRSON - 403.370.3010 - MOUNTAIN VIEW COUNTY, AB

ROHRICH'S CUTTING EDGE RANCH - 701.475.2285 - STEELE, ND

GRAND RIVER ANGUS - 616.889.2744 - GRAND RAPIDS, MI

INGRAM ANGUS - 256.239.8540 - PULASKI, TN

LUCAS REINHART - 405.334.2752 - PERKINS, OK

CONLEY CATTLE - 580.618.4533 - SULPHUR, OK

PLEASANT HILL CATTLE 417.849.9966

LB LIVESTOCK - 417.321.9417 - SHELDON, MO

ROSEBUD CATTLE COMPANY - 620.376.8218 - ABILENE, KS

NIOBRARA RED ANGUS - 402.484.4889 - LINCOLN, NE

POPLAR RIDGE FARMS - 405.613.7946 - FAR HILLS, NJ

SADLER RANCHES - 405.334.2752 - PERKINS, OK

COCKBURN RED ANGUS - 306.631.9490 - BRIERCREST, SK

BRACKEL RIDGE CATTLE - 607.345.0880 - CINCINNATUS, NY

ROHRICH'S CUTTING EDGE RANCH - 701.391.1911 - STEELE, ND

WILBAR CATTLE CO - 306.492.7504 - DUNBURN, SK

LEE HOLTMEIER - 785.747.7007 - WASHINGTON, KS

T BAR S CATTLE COMPANY - JUSTIN 573.690.3813 - KYLE 573.645.8819

HUMMEL LIVESTOCK - 815.405.4111 - CABERY, IL

MAPLE OAKS RED ANGUS 314.630.0332

WE INVITE YOU TO THE SECOND ANNUAL ESSENTIALS GENETICS SALE HELD AT THE CATTLEMEN'S BAR DURING THE OKLAHOMA CATTLEMEN'S CONGRESS STOCK SHOW. I WANT TO PERSONALLY THANK EVERY BREEDER WHO ALLOWED US TO MARKET THEIR VALUED NAME GENETICS! WE WANTED TO KICK OFF THE NEW YEAR WITH AN EXCITING EVENT FEATURING THE VERY BEST BLACK AND RED ANGUS GENETICS. FOR THIS SECOND SALE, WE TRIED HARD TO PULL LIKE-MINDED BREEDERS FROM THE US AND CANADA TO BRING A UNIQUE AND POWERFUL SET OF VALUABLE FROZEN GENETICS AND LIVE CATTLE FROM ELITE CATTLEMEN. WE ARE EXCITED TO MEET AND VISIT WITH YOU ABOUT THE OFFERING! IF YOU HAVE ANY QUESTIONS, DON'T HESITATE TO CONTACT US OR ANY OF THE CONSIGNORS.

-Mike Marlow
MARLOW CATTLE SERVICES





OFFERED BY:

SANDRIDGE LAND & CATTLE - 405.612.5111 - PERKINS, OK

SANDRIDGE COSMIC COWBOY 4551

RED ANGUS		REG.4945894			DB.05.02.2024			TATTOO.4551		
CED	BW	WW	YW	DMI	CEM	MILK	REA	FAT	HB	GM
5	1.3	73	124	1.10	6	25	0.10	-0.02	11	55

RED ALLISON MOONEY 62G
RED SSS MOON PIE 680K
RED SSS LARKABELLE 722G

RED DKF RAZOR 55C
T5 CHARLOTTE 892
ORT CHARLOTTE 3003

COSMIC COWBOY IS A DREAM COME TRUE FOR US AT SANDRIDGE LAND AND CATTLE! HE HAS BEEN A STAND-OUT SINCE HE WAS A BABY AND HAS NEVER LET OFF THE GAS. HIS WINNINGS INCLUDE RESERVE DIVISION AT 2025 CATTLEMANS CONGRESS, DIVISION CHAMPION 2025 FORT WORTH STOCK SHOW, GRAND CHAMPION BRED AND OWNED AND GRAND CHAMPION PHENOTYPE/GENOTYPE BULL AT 2025 RAYE. RECENTLY HE WAS SELECTED GRAND CHAMPION AT 2025 NAILE. COSMIC BLENDS THE CORRECT AMOUNT OF MUSCLE AND MASCULINITY WITH AN IMPECCABLE RIB SHAPE. HIS MOVEMENT IS FLUID AND SMOOTH AND THE AMOUNT OF PRESENCE HE CARRIES IN HIS NECK SHOULDER JUNCTION WHILE MAINTAINING A CORRECT SHOULDER ANGLE IS JUST ASTOUNDING. GENETICALLY SPEAKING, HIS 100% WESTERN CANADIAN OUTCROSS PEDIGREE OFFERS A SIGNIFICANT VALUE TO THE RED ANGUS BREED. HIS SIRE, RED SSS MOONPIE 680K HAS GARNERED QUITE THE RECOGNITION AND WILL CONTINUE TO DO SO AS MORE OF HIS PROGENY ARE



RED SSS MOON PIE 680K, SIRE OF 4551



T5 CHARLOTTE 892, DAM OF 4551



ORT CHARLOTTE 3003, GRANDAM OF 4551

MADE PUBLIC. WE REGARD HIS PROGENY AS SOME OF THE BEST WE'VE SEEN AT SANDRIDGE AND WE ARE HOLDING HIS DAUGHTERS CLOSE AS THEY ARE DEVELOPING TO BE THE TOP END OF OUR NEXT GENERATION. IT IS IMPRESSIVE THE WAY CHARLOTTE 892, THE DAM OF COSMIC, HAS FOUGHT HER WAY TO THE PINNACLE OF OUR DONOR GROUP. 892 IS THE THIRD GENERATION OF A SUPER PRODUCTIVE, RED TOWAW INDEED 104H SIRED COW FAMILY THAT WAS PURCHASED FROM SIX MILE RANCH IN 2010. SHE IS ALSO A HIGHLY MATERNAL FEMALE WITH A GORGEOUS UDDER, HAVING PERFECT TEAT SIZE AND PLACEMENT WHILE MAINTAINING AN IMPRESSIVE AMOUNT OF NATURAL SHAPE AND A BEAUTIFUL SILHOUETTE. IF YOU WANT TO HEAR HOW EXCITED WE ARE ABOUT THE FUTURE COSMIC COWBOY, GIVE US A CALL. FOOTNOTES GET LONG SOMETIMES AND WE'D RATHER YOU HEAR OUR EXCITEMENT IN A CONVERSATION WITH US. - TONY TOLAR

Flush Opportunity



OFFERED BY:

GENESIS ENTERPRISES - 918.377.6365 - DAVENPORT, OK

**SELLING ONE IVF EMBRYO FLUSH TO THE BULL OF THE BUYER'S CHOICE WITH
A GUARANTEE OF 6 TRANSFERABLE EMBRYOS.**

C-4 SHE'S A FOX 1188M

RED ANGUS		REG.5008513			DB.01.06.2024			TATTOO.1188M		
CED	BW	WW	YW	DMI	CEM	MILK	REA	FAT	HB	GM
10	0.3	75	118	0.69	6	27	0.46	0.02	34	45

RED U-2 RECKONING 149A
SIX MILE JOHN WICK 882E
 RED SIX MILE & CO GLORIA 29A

MANN RED BOX 55C
DUFF RED FOX 1997
 RED BLAIR'S YANKEE 28B

WITHOUT A DOUBT, THIS IS ONE OF THE MOST INTRIGUING RED ANGUS DONOR EMBRYO FLUSH OPPORTUNITIES TO SELL THIS YEAR! ONE IVF FLUSH TO THE BULL OF THE BUYER'S CHOICE FROM THE \$100,000 C-4 SHE'S A FOX 1188M! 1188M HAS BEEN ONE OF THE MOST ADMIRRED RED ANGUS FEMALES ON THE SHOW ROAD OVER THE LAST YEAR. THE ORR FAMILY HAS CAMPAIGNED 1188M TO RESERVE GRAND CHAMPION RED ANGUS FEMALE AT THE 2025 NAJRAE FUZION SHOW, GRAND CHAMPION RED ANGUS AND 4TH OVERALL SUPREME FEMALE AT THE 2025 TULSA STATE FAIR, GRAND CHAMPION RED ANGUS FEMALE AT THE 2025 AMERICAN ROYAL, AND MOST RECENTLY GRAND CHAMPION RED ANGUS FEMALE AT THE 2025 NAILE JR SHOW. THIS PAST SPRING, IN THE 2025 C-4 BULL SALE, A FULL BROTHER TO THE FEMALES SELLING NAMED C-4 AFTERGLOW 1049M WAS A \$24,000 SALE FEATURE! 1188M IS A REAL-WORLD DONOR FEMALE GEARED TO PRODUCE AT THE HIGHEST LEVEL IN THE PASTURE AND THE SHOW RING! THIS IS ONE OF THE MOST ELITE OPPORTUNITIES OF THE YEAR!

**SELLING ONE IVF EMBRYO FLUSH TO THE BULL OF THE BUYER'S CHOICE WITH A
GUARANTEE OF 6 TRANSFERABLE EMBRYOS.**



SIX MILE JOHN WICK 882E, SIRE OF 1188M

DUFF RED FOX 1997, DAM OF 1188M

C-4 AFTERGLOW 1049M, FULL SIBLING TO 1188M



FULL SISTERS OF C-4 SHE'S A FOX 1188M



ELLINGSON PROGRESSIVE, SIRE OF PREGNANCY, LOT 3A

Heifer Pregnancy

OFFERED BY:

PINE COULEE ANGUS - 406.780.1230 - 406.425.4292 - ABSAROOKEE, MT

GRAND RIVER ANGUS - 616.889.2744 - GRAND RAPIDS, MI

BAR-E-L ERICA 74A

BLACK ANGUS					REG.19057796		DB.02.19.2013		TATTOO.74A		
CED	BW	WW	YW	DMI	CEM	MILK	RE	FAT	\$W	\$B	
+0	+3.1	+61	+103	+78	+11	+32	+34	+0.06	+59	+116	

S A V BISMARCK 5682

PEAK DOT FAME 2N

BAR-E-L NATURAL LAW 52Y

HF ERICA 339T

BAR-E-L MAGNOLIA 143K

HF ERICA 46P

A HEIFER PREGNANCY BY ELLINGSON PROGRESSIVE

BLACK ANGUS		REG.20373996		DB.02.14.2022		TATTOO.2056				
CED	BW	WW	YW	DMI	CEM	MILK	RE	FAT	\$W	\$B
+4	+4.4	+88	+150	+2.09	+10	+24	+113	-.041	+74	+176

S POWERPOINT WS 5503

KOUPAL ADVANCE 28

ELLINGSON PROFOUND 8155

EA BELLS GIRL 7617

EA ROSETTA 6157

EA BELLS GIRL 2181

THIS IS ARGUABLY THE MOST UNIQUE, PROVEN MATERNAL OPPORTUNITY OFFERED IN 2026. GRAND RIVER ANGUS IS OFFERING THE ENTIRE WORLD EMBRYOS AND ONE HEIFER PREGNANCY BY ONE OF THE BREED'S MOST HIGHLY REGARDED FEMALES, BAR-E-L ERICA 74A! THIS FEMALE BECAME PART OF THE GRAND RIVER EMBRYO PROGRAM VIA A \$525,000 PRIVATE TREATY PURCHASE FROM BLAIRS.AG CATTLE COMPANY IN CANADA. THIS FEMALE BEGAN WRITING HER SUCCESS STORY BY BEING SELECTED AS THE CANADIAN WESTERN AGRIBITION CHAMPION ANGUS FEMALE. FROM THERE, SHE PROVED SHE WAS AN ELITE FEMALE WITHIN THE SHOW RING AND A POTENT DONOR FEMALE OUT IN THE PASTURE. THIS ELITE DONOR HAS PRODUCED THE POPULAR AI Sires BLAIR'S EXTERNAL LAW AND BLAIR'S MARTIAL LAW 593E. THE DISTINGUISHED LIST OF DIRECT DAUGHTERS CONTINUING TO WRITE THEIR STORIES IS NOTHING SHORT OF IMPRESSIVE, AND THE ARGUMENT CAN BE MADE THAT THIS INCREDIBLE DONOR COW HAS YET TO REACH HER PINNACLE. SIMPLY PUT, YOU WON'T FIND BETTER INVESTMENT POTENTIAL! OFFERING A HEIFER PREGNANCY Sired BY THE PROVEN SOURCE ELLINGSON PROGRESSIVE, WHICH HAS MADE AN EPIC IMPACT ACROSS THE GLOBE. AS A SALE HIGHLIGHT, SEXED HEIFER EMBRYOS Sired BY THE RECORD-SELLING LT MARQUEE 169L, VALUED AT 1.4 MILLION!



LT MARQUEE 169L, SIRE OF LOT 3B



BAR-E-L ERICA 74A

OFFERED BY:

GRAND RIVER ANGUS - 616.889.2744 - GRAND RAPIDS, MI

BAR-E-L ERICA 74A

BLACK ANGUS		REG.19057796		DB.02.19.2013		TATTOO.74A				
CED	BW	WW	YW	DMI	CEM	MILK	RE	FAT	\$W	\$B
+0	+3.1	+61	+103	+78	+11	+32	+34	+0.06	+59	+116

S A V BISMARCK 5682

PEAK DOT FAME 2N

BAR-E-L NATURAL LAW 52Y

HF ERICA 339T

BAR-E-L MAGNOLIA 143K

HF ERICA 46P



BAR-E-L DUCHESS 169L, DAM OF LT MARQUEE 169L



CSS CERTIFIED/EXPORTABLE
3 HEIFER SEXED EMBRYOS BY LT MARQUEE 169L

LT MARQUEE 169L

BLACK ANGUS					REG.20879311		DB.03.29.2023		TATTOO.169L		
CED	BW	WW	YW	DMI	CEM	MILK	RE	FAT	\$W	\$B	
+0	+4.5	+72	+120	+1.12	+3	+21	+71	+0.23	+56	+138	

U-2 COALITION 206C

PEAK DOT TOPSOIL 355G

MERIT INVESTMENT 1054J

BAR-E-L DUCHESS 169J

MERIT FLORA 6078D

BAR-E-L DUCHESS 76G



BLAIRSWEST ERICA 84H
MATERNAL SIBLING TO LOT B EMBRYOS



OFFERED BY:

GRAND RIVER ANGUS - 616.889.2744 - GRAND RAPIDS, MI

BAR-E-L ERICA 74A

BLACK ANGUS REG.19057796 DB.02.19.2013 TATTOO.74A

CED	BW	WW	YW	DMI	CEM	MILK	RE	FAT	\$W	\$B
+0	+3.1	+61	+103	+78	+11	+32	+34	+0.06	+59	+116

S A V BISMARCK 5682

PEAK DOT FAME 2N

BAR-E-L NATURAL LAW 52Y**HF ERICA 339T**

BAR-E-L MAGNOLIA 143K

HF ERICA 46P

CSS CERTIFIED/EXPORTABLE
3 HEIFER SEXED EMBRYOS BY BROOKING FIREBRAND 6068

BROOKING FIREBRAND 6068

BLACK ANGUS REG.18730602 DB.01.31.2016 TATTOO.68D

CED	BW	WW	YW	DMI	CEM	MILK	RE	FAT	\$W	\$B
-1	+3.5	+60	+96	+47	+7	+23	+48	+0.18	+51	+84

CONNEALY EARNAN 076E

S A V BEST INTEREST 0136

BROOKING BANK NOTE 4040**BROOKING ANNIE K 390**

E A ROSE 918

SOO LINE ANNIE K 9165

THIS IS ARGUABLY THE MOST UNIQUE, PROVEN MATERNAL OPPORTUNITY OFFERED IN 2026. GRAND RIVER ANGUS IS OFFERING THE ENTIRE WORLD EMBRYOS AND ONE HEIFER PREGNANCY BY ONE OF THE BREED'S MOST HIGHLY REGARDED FEMALES, BAR-E-L ERICA 74A! THIS FEMALE BECAME PART OF THE GRAND RIVER EMBRYO PROGRAM VIA A \$525,000 PRIVATE TREATY PURCHASE FROM BLAIRS.AG CATTLE COMPANY IN CANADA. THIS FEMALE BEGAN WRITING HER SUCCESS STORY BY BEING SELECTED AS THE CANADIAN WESTERN AGRIBITION CHAMPION ANGUS FEMALE. FROM THERE, SHE PROVED SHE WAS AN ELITE FEMALE WITHIN THE SHOW RING AND A POTENT DONOR FEMALE OUT IN THE PASTURE. THIS ELITE DONOR HAS PRODUCED THE POPULAR AI SIRE BLAIR'S EXTERNAL LAW AND BLAIR'S MARTIAL LAW 593E. THE DISTINGUISHED LIST OF DIRECT DAUGHTERS CONTINUING TO WRITE THEIR STORIES IS NOTHING SHORT OF IMPRESSIVE, AND THE ARGUMENT CAN BE MADE THAT THIS INCREDIBLE DONOR COW HAS YET TO REACH HER PINNACLE. SIMPLY PUT, YOU WON'T FIND BETTER INVESTMENT POTENTIAL! THIS MATING BY BROOKING FIREBRAND IS BIG-TIME PROVEN AND A FULL SISTER TO BROOKING ERICA 77J, WHO HAS DOMINATED IN THE PROGRESSIVE ZWT PROGRAM.



BLAIRWEST ERICA 77J, FULL SIBLING TO LOT C EMBRYOS



BROOKING FIREBRAND, SIRE OF LOT 3C



BROOKING BANK NOTE 4040, SIRE OF F6068

4
A-B



H/H SILENT MAJORITY 0248, SIRE OF LOT 4A



WCCO UNIQUE 9028L, SIRE OF LOT 4B



DAUGHTERS OF 1997

OFFERED BY:

C-4 LAND & CATTLE - 918.399.3475 - PERKINS, OK

DUFF RED FOX 1997

RED ANGUS REG.4118964 DB.02.26.2019 TATTOO.1997

CED	BW	WW	YW	DMI	CEM	MILK	REA	FAT	HB	GM
10	1.7	69	110	0.81	3	29	0.36	0.00	-1	43

SLGN WIDELOAD 920W

RED RINGSTEAD KARGO 215U

MANN RED BOX 55C

PELTON MISS AJA 0839U

RED BLAIR'S YANKEE 28B

WSF MS YANKEE 13T 12W

LADIES AND GENTLEMEN, THE OPPORTUNITY IS YOURS TO MAKE AN UNPRECEDENTED FINANCIAL INVESTMENT THAT WILL BE PROFITABLE! FROZEN EMBRYOS BY THE FAMED RED ANGUS DONOR FEMALE DUFF RED FOX 1997 CAN BE YOURS. UNSURPASSED IS HOW MANY DESCRIBE THE PEDIGREE BEHIND THE DAUGHTERS OF DUFF RED FOX 1997. RED FOX IS Sired BY THE HIGHLY POPULAR MANN RED BOX 55C AND OUT OF A FULL SISTER TO BLAIR'S RINGO. RED FOX BRINGS POWER AND SUBSTANCE TO THE TABLE WITH A RED ANGUS PEDIGREE STACKED ON BOTH SIDES. SHE WAS THE HIGH-SELLING FEMALE IN POWER PLUS CATTLE'S 2019 FEMALE SALE FOR \$71,000. SHE IS ABSOLUTELY STUNNING ON THE PROFILE, ANGULAR IN HER DESIGN, ULTRA- ATTRACTIVE IN HER LOOK, AND WIDE AT THE BASE OF HER SKELETON. WE COULD WRITE PARAGRAPHS DESCRIBING THE CALIBER OF THIS DONOR FEMALE, BUT HER HIGH-QUALITY LOOK WILL SPEAK FOR ITSELF. A DAUGHTER RECENTLY COMMANDED 100,000, WITH AN EMPIRE OF FOLLOWERS IN THE SHOW RING AND BEYOND. AN EMBRYO FLUSH SELLS AS LOT 2!

**A 3 IVF EMBRYOS BY H/H SILENT MAJORITY 0248
H/H SILENT MAJORITY 0248**

RED ANGUS REG.4308791 DB.03.27.2020 TATTOO.0248

CED	BW	WW	YW	DMI	CEM	MILK	REA	FAT	HB	GM
8	0.4	69	95	0.56	3	20	-0.05	0.00	48	16

SIX MILE TUFF ENUF 111Z

BIEBER HARD DRIVE Y120

RED SIX MILE BIG TIMBER 654C

RED SIX MILE DAISY 333X

FFG REBELLA 726

PIE REBELLA 5154

**B 3 IVF EMBRYOS BY WCCO UNIQUE 9028L
WCCO UNIQUE 9028L**

RED ANGUS REG.4862630 DB.03.24.2023 TATTOO.9028L

CED	BW	WW	YW	DMI	CEM	MILK	REA	FAT	HB	GM
8	1.4	71	112	0.56	5	26	0.10	0.00	39	42

SIX MILE JOHN WICK 882E

4MC KING OF THE COWBOYS 706

SIX MILE PARABELLUM 675G

RED SIX MILE KURUBA 712A

WCCO 9028G

PELTON MISS 361B



OFFERED BY:

HUMMEL LIVESTOCK 815.405.4111 - SADLER RANCHES 405.334.2752

HUMMEL TANK 208H

BLACK ANGUS					REG.20593757		DB.04.03.2020		TATTOO.208H		
CED	BW	WW	YW	DMI	CEM	MILK	RE	FAT	SW	SB	
+4	+3.1	+61	+110	+1.38	+2	+28	+98	+0.32	+56	+121	
TRES MARIAS 6301 ZORZAL					S A V BISMARCK 5682						
COSENZA DON ROBERTO 338 T/E					RUBETA FONTANA 6207-T/E						
COSENZA FACONERA SANF 39-T/E					RUBETA 3873 FONTANA-T/E						

THIS IS THE FIRST PUBLIC OFFERING FROM THE 208H DONOR. THIS FEMALE LINE HAS GENERATED CATTLE WHOSE RESULTS SPEAK MUCH LOUDER THAN I CAN PUT INTO WORDS. DO A BIT OF RESEARCH AND YOU WILL DISCOVER WHAT HAS BEEN ACCOMPLISHED AT COLEMAN ANGUS, WHICH GOES DIRECTLY BACK TO THIS COW FAMILY.

ARE SUCH GENETICS A BIT OUTSIDE THE BOX FOR SOME? ABSOLUTELY, BUT I HAVE DISCOVERED THAT IF YOU FOLLOW THE CROWD AND DO WHAT THEY DO, THE RESULTS WILL BE THE SAME AS EVERYONE ELSE'S. THAT DOES NOT MOVE YOU AHEAD IN THE WORLD OF BREEDING CATTLE.

HAVE YOU HEARD OF THE BULLS HUMMEL ARGENTINE, HUMMEL SOUTH AMERICA, OR HUMMEL PALERMO? THE 208H COW IS A FULL SIBLING TO THE DONOR DAM OF THOSE BULLS AND ONE OF MY FAVORITE FEMALES OF ALL TIME. SOME WOULD TELL YOU THAT SHOW CATTLE AND REAL-WORLD PERFORMANCE CATTLE CAN NO LONGER BE ONE AND THE SAME. I REFUSE TO ACCEPT THAT. GOOD LIVESTOCK IS JUST THAT. CATTLE BUILT FOR LONGEVITY THAT ARE EASY-FLESHING, WITH MUSCULAR SHAPE, MATERNAL QUALITY, AND REAL-WORLD PERFORMANCE SEEM LIKE THEY SHOULD BE WHAT IS DESIRED BY ALL CATTLE OPERATIONS. IF CATTLE DO ALL OF THESE THINGS, I DO NOT NEED TO SEE NUMBERS ON PAPER OR A PHOTO FROM A BACKDROP TO QUANTIFY ONE'S VALUE. THESE ARE THE KIND THAT ARE EASY TO LOOK AT AND WORK WELL EACH AND EVERY DAY IN PRODUCTION. THE DREAM OF BRINGING TOGETHER SOME OF THE BEST ANGUS GENETICS ON THE PLANET HAS BECOME A REALITY. THE BONUS IS THAT SOME OF THE INDUSTRY GIANTS FROM SHOW-BASED BREEDERS TO THOSE WHO FOCUS MORE ON THE REAL WORLD AND WHO SPAN THE UNITED STATES, CANADA AND SOUTH AMERICA HAVE ALSO EMBRACED THESE CATTLE. THE HUMMEL LIVESTOCK FAMILY IS PROUD TO OFFER THIS SET OF EMBRYOS. IT IS OUR DESIRE THAT THESE GENETICS WORK AS WELL FOR YOU AS THEY HAVE ACROSS ALL OF THE AMERICAS.



BLAIR'S EXTERNAL LAW, SIRE OF LOT 5A

A 3 IVF EMBRYOS BY BLAIR'S EXTERNAL LAW BLAIR'S EXTERNAL LAW

BLACK ANGUS					REG.	DB.		TATTOO.266F		
CED	BW	WW	YW	DMI	CEM	MILK	RE	FAT	\$W	\$B
+3	+2.2	+60	+90	+26	+1	+17	+67	+012	+51	+71
DUFF DISTINCTION 9105					BAR-E-L NATURAL LAW 52Y					
DUFF NAPOLEON 232					BAR-E-L ERICA 74A					
DUFF EUR 443 MERLE 808					HF ERICA 339T					



COLEMAN RESOURCE 708, SIRE OF LOT 5B

B 3 IVF EMBRYOS BY S A V RESOURCE 1441 S A V RESOURCE 1441

BLACK ANGUS					REG.18933681		DB.01.11.2017		TATTOO.708		
CED	BW	WW	YW	DMI	CEM	MILK	RE	FAT	\$W	\$B	
+8	-.2	+56	+102	+1.16	+4	+25	+.42	+.055	+56	+70	
RITO 707 OF IDEAL 3407 7075							COLEMAN MANNING 0299				
S A V RESOURCE 1441					COLEMAN DONNA 376						
S A V BLACKCAP MAY 4136					COLEMAN DONNA 005						



COLEMAN CHARLO 0256, SIRE OF LOT 5C

C 3 IVF EMBRYOS BY COLEMAN CHARLO 0256 COLEMAN CHARLO 0256

BLACK ANGUS					REG.16879074		DB.08.11.2010		TATTOO.0256	
CED	BW	WW	YW	DMI	CEM	MILK	RE	FAT	\$W	\$B
+9	+0	+50	+91	+31	-2	+27	+52	+068	+78	+117
O C C FOCUS 813F					SITZ TRAVELER 8180					
O C C PAXTON 730P					BOHI ABIGALE 6014					
O C C BLACKBIRD 736K					S A V ABIGALE 6062					



HUMMEL SOUTH AMERICA



HUMMEL PALERMO



HUMMEL ARGENTINE

SONS OF RUBETA FONTANA 6207-T/E, FULL SISTER TO HUMMEL TANK 208H

6 Pick of the Pen

OFFERED BY:

T BAR S CATTLE COMPANY - JUSTIN 573.690.3813 - KYLE 573.645.8819 - BILLINGS, MO
SWING BY THE T BAR S STALLS TO CHECK OUT THIS OFFERING AT THE 2026 CATTLEMEN'S CONGRESS



SELLING FULL POSSESSION AND RETAINING 25% SEMEN INTEREST

T BAR S IRON HORSE N1362

RED ANGUS					REG.5165793		DB.02.18.2025		TATTOO.N1362		
CED	BW	WW	YW	DMI	CEM	MILK	REA	FAT	HB	GM	
10	-0.5	80	128	0.66	7	28	0.08	0.01	39	70	
BIEBER DEEP END B597					BIEBER CL ENERGIZE F121						
LSF DLL LOCOMOTION					T BAR S MS 1234L						
LSF SRR CHEVY Z2255 F8142					LSF SRR GILDA F8564 J1179						

IRON HORSE IS A TOTALLY DIFFERENT TWIST ON A RED ANGUS BEEF BULL! THE ADDED BONE, SOUNDNESS, AND OVERALL WOW FACTOR IRON HORSE POSSESSES IS UNCANNY! WE FEEL LIKE HE IS ON TRACK TO BE AN ELITE CROSSROADS SIRE THAT BALANCES OUT SHOW RING STYLE WITH CALVING EASE AND MATERNAL BUILT IN GENETICALLY! HIS COMBINATION OF THE STGENETICS SIRE LSF DLL LOCOMOTION AND BIEBER CL ENERGIZE F121, BOTH LOW BIRTH PROVEN PLUS PERFORMANCE SIRES, MAKES IRON HORSE A SURE BET. BLUE SKIES AHEAD WITH MEGA SEMEN SALES OPPORTUNITIES, WE WOULD LIKE TO LIST THIS IRON HORSE IN THE PREMIUM BEEF GENETICS 2026 LINEUP!





SELLING FULL POSSESSION AND RETAINING 25% SEMEN INTEREST

T BAR S VITTORIO N1365

RED ANGUS REG.5165799 DB.02.24.2025 TATTOO.N1365

CED	BW	WW	YW	DMI	CEM	MILK	REA	FAT	HB	GM
11	-2.4	91	141	0.87	7	30	0.32	-0.03	42	48

BIEBER CL STOCKMARKET E119

WFL MERLIN Q18A

HRP BULLISH 2028K

C-BAR STONY 3H

LSF SRR PEARLY E7032 J1235

LSF SRR PEARLY C5092 E7032

A TRUE POWERHOUSE, ONE THAT IMMEDIATELY CATCHES YOUR ATTENTION AT FIRST GLANCE! THE OVERALL DIMENSION, BOLD SPRING OF RIB, AND A MASSIVE TOPLINE THAT RUNS DEEP INTO HIS LOWER STIFLE. VITTORIO IS A LEGIT OUTLIER, CARRYING A -2.4 FOR BW, A +91 FOR WW, AND A +141 FOR YEARLING GROWTH! WE THINK HE IS JUST GETTING WARMED UP FOR WHAT HE CAN ACTUALLY CONTRIBUTE TO THE RED ANGUS BREED. IF YOU WANT TO MAKE AN IMPACT, VITTORIO IS THE KEY INGREDIENT YOU HAVE BEEN LOOKING FOR! VAST OPPORTUNITIES FOR SEMEN SALES AND FOR PRODUCING POWER BEEF BULLS AND FRONT PASTURE REPLACEMENTS.



SELLING FULL POSSESSION AND RETAINING 25% SEMEN INTEREST

T BAR S KICKSTART N1364

RED ANGUS REG.5165797 DB.02.23.2025 TATTOO.N1364

CED	BW	WW	YW	DMI	CEM	MILK	REA	FAT	HB	GM
10	0.3	86	143	1.33	7	24	0.37	0.01	29	41

BIEBER CL ENERGIZE F121

RED U2 DOMINION

BIEBER JUMPSTART J137

BIEBER GALLEE 390G

RAML ULRA 3102

RAML ULRA 1102

MANY VISITORS TO T BAR S CATTLE CO. HAVE HAD DIFFERENT OPINIONS ABOUT WHAT BULL THEY LIKE, AND KICKSTART HAS BEEN A FAVORITE AMONG MANY. AND FOR THE SIMPLE REASON OF ADDED PERFORMANCE, FRAME, AND EXTENSION. A STELLAR RED U2 DOMINION DAUGHTER BACKS THIS BIEBER JUMPSTART SIRE BEEF BULL. HIS DARK RED HIDE AND COOKIE-CUTTER DESIGN WILL SET YOU ON YOUR HEELS!



ELLINGSON PROGRESSIVE, SIRE OF LOT 6A



BROOKING TRADITION 4064, SIRE OF LOT 6B

OFFERED BY:

SCOTT & REBECCA BOHRSON - 403.370.3010 - MOUNTAIN VIEW COUNTY, AB

BAR-E-L BRIDE 28C

BLACK ANGUS		REG.20622908		DB.02.09.2015		TATTOO.28C				
CED	BW	WW	YW	DMI	CEM	MILK	RE	FAT	\$W	\$B
-3	+2.6	+64	+103	+93	+8	+28	+32	+060	+62	+111

S A V BISMARCK 5682

HF ALASKAN 94T

BAR-E-L NATURAL LAW 52Y

DBRL 94T BRIDE 4W

BAR-E-L MAGNOLIA 143K

SANDY BAR BRIDE 74T

BAR-E-L BRIDE 28C WAS THE \$100,000 HIGH SELLER AT THE 10TH ANNUAL BROOKING ANGUS RANCH OPEN BOOK INVITATIONAL TO COLEMAN ANGUS, BROOKING ANGUS RANCH AND CANADIAN DONORS. SHE WAS A COW WE HAD BEEN FOLLOWING FOR YEARS AT THE RENOWNED BAR-E-L PROGRAM, AND WE KNEW WE NEEDED TO OWN HER. THE RIGHT TO FLUSH 28C SOLD IN 2023 FOR A STAGGERING \$75,000, AND A DAUGHTER RECENTLY BROUGHT \$30,000 USD AT COLEMAN ANGUS. HER POPULARITY NORTH AND SOUTH OF THE BORDER CONTINUES TO INCREASE WITH ENDLESS POTENTIAL. THE NEAR-PERFECT PHENOTYPE YOU FIND IN 28C IS IMPRECCABLE, WITH A BEAUTIFUL HEAD, LONG AND ATTRACTIVE FRONT END, A LEVEL, BROAD TOP WITH IMPRESSIVE BODY CAPACITY, AND AN OVERALL LENGTH, ALL WHILE POSSESSING A BEAUTIFUL UDDER AND GOOD FOOT QUALITY.

A 3 IVF EMBRYOS BY ELLINGSON PROGRESSIVE ELLINGSON PROGRESSIVE

BLACK ANGUS		REG.20373996		DB.02.14.2022		TATTOO.2056				
CED	BW	WW	YW	DMI	CEM	MILK	RE	FAT	\$W	\$B
+4	+4.4	+88	+150	+2.09	+10	+24	+113	-.041	+74	+176

S POWERPOINT WS 5503

KOUPAL ADVANCE 28

ELLINGSON PROFOUND 8155

EA BELLS GIRL 7617

EA ROSETTA 6157

EA BELLS GIRL 2181

B 3 IVF EMBRYOS BY BROOKING TRADITION 4064 BROOKING TRADITION 4064

BLACK ANGUS		CAA. 2394178		DB.01.14.2024		TATTOO.JSTN 64M				
CED	BW	WW	YW	DMI	CEM	MILK	RE	FAT	HPG	MARB
-4.0	+4.7	+82	+150	+1.21	-	+24	+0.96	+0.07	+10	+0.60

S A V AMERICA 8018

SCHIEFELBEIN SHOWMAN 338

BROOKING NEXT GENERATION 1038

GREENWOOD TIBBIE JJP 82H

SOO LINE ROSE 1019

HF TIBBIE 22C



OFFERED BY:

ROHRICH'S CUTTING EDGE RANCH - 701.391.1911 - STEELE, ND

COCKBURN RED ANGUS - 306.631.9490 - BRIERCREST, SK

RED SSS MOON PIE 680K

RED ANGUS					REG.4852552		DB.02.22.2022		TATTOO.680K	
CED	BW	WW	YW	DMI	CEM	MILK	RE	FAT	HB	GM
9	2.8	71	122	1.09	7	24	0.21	-0.02	39	51
RED BAR-E-L CERTIFIED 95C					RED MRLA RESOURCE 137E					
RED ALLISON MOONEY 62G					RED SSS LARKABELLE 722G					
RED BAR-E-L CARLEE 18C					RED SSS LARKABELLE 852D					

RED SSS MOONPIE 680K DEMANDED \$95,000 IN THE 2023 ANNUAL SSS BULL SALE. HE IS UNIQUE TO THE RED ANGUS BREED. MOON PIE IS A STAND OUT! HIS BODY MASS, FOOT AND BONE STRUCTURE, AND LENGTH OF BODY ALL IN ONE PACKAGE ARE HARD TO COME BY AND MAKE HIM EASY TO APPRECIATE! WITH CALVES ON THE GROUND, WE CAN TELL YOU HE WILL ADD FRAM, BASE WIDTH AND PUTS THAT EXTRA IN THEM! THEY ARE PHENOTYPICALLY CORRECT AND VERY ATTRACTIVE CALVES. UNFORTUNATELY, DUE TO SOME BAD LUCK, MOON PIE HAD TO BE PUT DOWN, AND THE SEMEN IS LIMITED! THEY ARE CO-OWNED WITH COCKBURN RED ANGUS. BETTER TIE INTO SEMEN AND EMBRYOS SIRED BY MOON PIE. IN LAST YEAR'S ESSENTIALS SALE IT FETCHED \$4,200 PER STRAW. I BET IT PAYS OFF IN DIVIDENDS.

- A* 1 UNIT OF RED SSS MOON PIE 680K
- B* 1 UNIT OF RED SSS MOON PIE 680K
- C* 1 UNIT OF RED SSS MOON PIE 680K
- D* 1 UNIT OF RED SSS MOON PIE 680K
- E* 1 UNIT OF RED SSS MOON PIE 680K



9

A-B



DAUGHTER OF 1794



SON OF 1794



SAV RENOVATION 6822, SIRE OF LOT 9A



MONTANA MILESTONE 4035, SIRE OF LOT 9B

OFFERED BY:

POWER PLUS CATTLE - 580-726-3313- HOBART, OK

DUFF GEORGINA 201 1794

BLACK ANGUS REG.19134693 DB.03.18.2017 TATTOO.1794

CED	BW	WW	YW	DMI	CEM	MILK	RE	FAT	\$W	\$B
+6	-6	+39	+55	+04	+5	+24	+11	+055	+46	+54

BAR WICK EUREKA 943 310

DUFF LINEBRED 904

DUFF HONCHO 426

DUFF GEORGINA 9541 201

DUFF BI 619 LADYPOP 1017

DUFF GEORGINA 4115 9541

1794 IS A PROVEN DONOR AT POWER PLUS, YOU WOULD BE HARD PRESSED TO FIND AN EASIER FLESHING SOUND MADE OR EVENLY CONSTRUCTED FEMALE ANYWHERE! SHE'S THE DAM OF 100,000 DUFF DISCOVERY THAT SOLD IN THE 2022 P+ BULL SALE TO SADLER RANCHES. A YEAR LATER, A DAUGHTER BY MARTIAL LAW WAS SOLD FOR 37K TO RUSTY COOPER. THE GEORGINA COW FAMILY IS A STRONG SOURCE OF QUALITY IN THE P+ PROGRAM. 1794 WAS THE TOP-SELLING FEMALE IN THE 2024 POWER PLUS FEMALE SALE. HER EMBRYO CALVES DOMINATE IN THE AGE GROUP IN THE P+ PROGRAM! FIRST OPPORTUNITY TO PURCHASE EMBRYOS Sired BY THE NEWEST P+ HERD SIRE MONTANA MILESTONE 4035, THE \$70,000 TOP-SELLING BULL IN THE MONTANA RANCH BULL SALE. MILESTONE IS BACKED BY FIVE PATHFINDER FEMALES, INCLUDING HIS DAM B&B BLKBD PROGRESS 3015, THE ULTIMATE MATERNAL FEMALE!

A 3 IVF EMBRYOS BY S A V RENOVATION 6822

S A V RENOVATION 6822

BLACK ANGUS REG.18579309 DB.01.28.2016 TATTOO.6822

CED	BW	WW	YW	DMI	CEM	MILK	RE	FAT	\$W	\$B
+4	+2.6	+66	+121	+1.58	+2	+16	+17	+111	+45	+127

RITO 707 OF IDEAL 3407 7075

S A V 004 DENSITY 4336

S A V RENOWN 3439

S A V MADAME PRIDE 0151

S A V BLACKCAP MAY 4136

S A V MADAME PRIDE 0075

B 3 IVF EMBRYOS BY MONTANA MILESTONE 4035

MONTANA MILESTONE 4035

BLACK ANGUS REG.21114186 DB.02.10.2024 TATTOO.4035

CED	BW	WW	YW	DMI	CEM	MILK	RE	FAT	\$W	\$B
-1	+3.3	+75	+122	+1.16	+2	+29	+50	+0.054	+76	+110

SQUARE B ATLANTIS 8060

KOUPLS B&B IDENTITY

MONTANA JUDGEMENT 1038

B&B BLKBD PROGRESS 3015

MILL BRAE FP JOANIE 3063

B&B BLKBD PROGRESS 0049



Kate Roberts

OFFERED BY:

SANDRIDGE LAND & CATTLE - 405.612.5111 - PERKINS, OK

RED WILBAR BERETTA 859M

RED ANGUS RAA.5137465 DB.01.31.2024 TATTOO.WJD 859M

CED	BW	WW	YW	DMI	CW	MILK	REA	FAT	HB	GM
11	-0.1	72	122	0.82	32	26	0.12	0.02	50	52

RED NCJ COMING IN HOT 24E

RED TWIN HERITAGE MOTIVATE 57E

RED WILBAR HIGHLIGHT 624H

RED WILBAR REBECCA 910J

RED WILBAR DOLL 776C

RED WILBAR REBECCA 834Z

A

1 UNIT OF RED WILBAR BERETTA 859M

B

1 UNIT OF RED WILBAR BERETTA 859M

BERETTA IS THE \$225,000 CANADIAN RECORD SETTING RED ANGUS BULL THAT HAS CAUGHT THE ATTENTION OF THE WORLD. HE HAS BEEN NOTED BY MANY IN THE CATTLE INDUSTRY AS THE HIGHEST QUALITY RED ANGUS BULL AVAILABLE ON THE MARKET TODAY. BERETTA LITERALLY COVERS ALL THE BASES: FROM HIS EXCEPTIONAL FOOT QUALITY TO TOP PERFORMANCE AND ELITE MATERNAL BACKING. HIS PEDIGREE INCLUDES SOO LINE MOTIVE 9016 ON THE MATERNAL SIDE AND MUSGRAVES AVIATOR ON THE SIRE SIDE TO CREATE QUITE AN OUTCROSS PEDIGREE. WITH SO MUCH THICKNESS DOWN HIS TOP AND A MASSIVE HIP & HIND QUARTER, IT'S IMPRESSIVE TO WATCH HIM MOVE OUT WITH SUCH EASE AND FLUIDITY. WE EXPECT BERETTA TO ADD NEXT LEVEL PERFORMANCE WHILE MAINTAINING A MODERATE BIRTH WEIGHT. BERETTA REALLY DOES HAVE IT ALL: PREMIUM COW FAMILY, HUGE BODY & RIB SHAPE, AND TRAVELS LIKE A CAT. GET IN EARLY ON THIS SIRE THAT IS SURE TO BE THE TALK OF THE INDUSTRY ONCE AGAIN WHEN HIS CALVES START HITTING THE GROUND! OWNED WITH SCOTT STOCK FARM AND WILBAR CATTLE COMPANY.



FULL SIBLINGS TO LOT 11 EMBRYOS

BAR-E-L NATURAL LAW 52Y, SIRE OF EMBRYOS

OFFERED BY:

POWER PLUS CATTLE - 580-726-3313- HOBART, OK

GCC ROSETTA 903A

BLACK ANGUS REG.18143192 DB.01.25.2013 TATTOO.903A

CED	BW	WW	YW	DMI	CEM	MILK	RE	FAT	\$W	\$B
-2	+4.1	+54	+96	+48	-11	+20	+52	+008	+37	+112

O C C GENESIS 872G

O C C MISSING LINK 830M

DUFF NEW EDITION 6108

FCC ROSETTA 745R

O C C DIXIE ERICA 814G

FCC ROSETTA 983N

THERE IS NO OTHER DONOR FEMALE IN THE C-4 LAND & CATTLE PROGRAM THAT HAS MADE MORE OF AN IMPACT THAN 903A! BOTH BULLS AND FEMALES, SHE HAS DOMINATED THE OLD-FASHIONED WAY, BIG-TIME PRODUCTION! THE ADDED PHENOTYPE, MUSCLE MASS, RIB SHAPE, AND OVERALL BALANCE SHE TRANSMITS ARE UNDENIABLE. OFFSPRING HAS SOLD TO MANY PROGRESSIVE PROGRAMS ACROSS THE GLOBE; HER FULL BROTHER IS DUFF ANGUS 011, WHO DOMINATED REGISTRATIONS IN ARGENTINA. EXCELLENT OPPORTUNITY TO FAST-TRACK YOUR PROGRAM WITH ELITE GENETICS, RENOWNED FOR HITTING THE HIGHLIGHT REEL! THREE SEXED HEIFER EMBRYOS Sired BY BAR-E-L NATURAL LAW 52Y!

3 IVF EMBRYOS BY BAR-E-L NATURAL LAW 52Y**BAR-E-L NATURAL LAW 52Y**

BLACK ANGUS REG.19310190 DB.02.18.2011 TATTOO.52Y

CED	BW	WW	YW	DMI	CEM	MILK	RE	FAT	\$W	\$B
+1	+3.3	+55	+104	+45	+7	+23	+69	+002	+35	+145

G A R GRID MAKER

BAR E L MCC 365 ICON 20H

S A V BISMARCK 5682

BAR-E-L MAGNOLIA 143K

S A V ABIGALE 0451

DOUBLE FOUR DUCHESS 12G



RED COCKBURN MC HAUCK 63H, DAM OF EMBRYOS



RED SSS MOON PIE 680K, SIRE OF EMBRYOS

OFFERED BY:**COCKBURN RED ANGUS - 306.631.9490 - BRIERCREST, SK****RED COCKBURN MS HAUCK 63H**

RED ANGUS REG.2173557 DB.02.10.2020 TATTOO.CWJ 63H

CED	BW	WW	YW	DMI	MRB	MILK	HPG	FAT	DBI	FL
-3.0	+3.2	+53	+90	+0.39	+0.13	+35	+9	-0.029	+211	+1.04

RED PIE ONE OF A KIND 352

RED COCKBURN RIBEYE 308U

RED COCKBURN EXCLUSIVE 207F**RED COCKBURN MS HAUCK 280Z**

RED WILBAR CORA 443P

RED COCKBURN MS HAUCK 28N

3 CONVENTIONAL EMBRYOS BY RED SSS MOON PIE 680K**RED SSS MOON PIE 680K**

RED ANGUS REG.4852552 DB.02.22.2022 TATTOO.680K

CED	BW	WW	YW	DMI	CEM	MILK	RE	FAT	HB	GM
9	2.8	71	122	1.09	7	24	0.21	-0.02	39	51

RED BAR-E-L CERTIFIED 95C

RED MRLA RESOURCE 137E

RED ALLISON MOONEY 62G**RED SSS LARKABELLE 722G**

RED BAR-E-L CARLEE 18C

RED SSS LARKABELLE 852D



RED COCKBURN BUGATTI 5008, FULL SIBLING TO EMBRYO MATING

HAUCK 4014, DAUGHTER OF 63H, FULL SIBLING TO EMBRYO MATING
SOLD FOR \$45,000RED COCKBURN PREMIUM 3059
SON OF 63H, SOLD FOR \$160,000

HAUCK 63H IS ONE WE ARE PROUD TO HAVE BRED AND RAISED. SHE IS THE 3RD GENERATION OF HAUCK DONOR FEMALES WITH BOTH HER DAM AND MATERNAL GRANDDAM. THROW IN THE INFLUENCE OF THE IMMORTAL CORA 443P AND YOU HAVE THE MOST POTENT PRODUCER TO WALK OUR PASTURES. FOOT AND UDDER QUALITY, LONGEVITY, FERTILITY, AND CONSISTENCY RUN DEEP. HER PRODUCTION RECORD IS HARD TO BEAT. HER FIRST CALF IS A FEATURE FEMALE WORKING AT THIESSEN LAND AND CATTLE, HER SECOND BEING THE \$160,000 PREMIUM 3059 BULL, AND THIRD THE \$45,000 HAUCK 4014 HEIFER. HER SET OF ET AND NATURAL CALVES THIS YEAR ARE PHENOMENAL LEAD OFF BY BUGATTI 5008 WHO WAS THE GRAND CHAMPION RED ANGUS BULL AT BRANDON AG EX AND WILL LEAD OUR BULL SALE NEXT SPRING. MOON PIE HAS BEEN SETTING THE RED ANGUS BREED ON FIRE. HIS SEMEN HAS COMMANDED UP TO \$4200 USD PER DOSE. HIS FIRST DAUGHTERS TO SELL HAVE SOLD FOR \$45,000 AND \$47,500 USD. SONS TOPPED OUR BULL SALE THIS PAST SPRING AS WELL AS ROHRICH'S AND SSS. THIS MATING WOULD BE FULL SIBS TO THE \$45,000 HAUCK 4014 HEIFER AS WELL AS BUGATTI 5008 WHO YOU WILL HEAR MUCH MORE FROM IN THE FUTURE.



MATERNAL SIBLING TO EMBRYOS



LT MARQUEE 169L, SIRE OF EMBRYOS



DUFF NEW EDITION 6108, SIRE OF 903A

OFFERED BY:**C-4 LAND & CATTLE - 918.399.3475 - PERKINS, OK****GCC ROSETTA 903A**

BLACK ANGUS REG.18143192 DB.01.25.2013 TATTOO.903A

CED	BW	WW	YW	DMI	CEM	MILK	RE	FAT	\$W	\$B
-2	+4.1	+54	+96	+48	-11	+20	+52	+008	+37	+112

O C C GENESIS 872G

O C C MISSING LINK 830M

DUFF NEW EDITION 6108

O C C DIXIE ERICA 814G

FCC ROSETTA 745R

FCC ROSETTA 983N

THERE IS NO OTHER DONOR FEMALE IN THE C-4 LAND & CATTLE PROGRAM THAT HAS MADE MORE OF AN IMPACT THAN 903A! BOTH BULLS AND FEMALES, SHE HAS DOMINATED THE OLD-FASHIONED WAY, BIG-TIME PRODUCTION! THE ADDED PHENOTYPE, MUSCLE MASS, RIB SHAPE, AND OVERALL BALANCE SHE TRANSMITS ARE UNDENIABLE. OFFSPRING HAS SOLD TO MANY PROGRESSIVE PROGRAMS ACROSS THE GLOBE; HER FULL BROTHER IS DUFF ANGUS 011, WHO DOMINATED REGISTRATIONS IN ARGENTINA. EXCELLENT OPPORTUNITY TO FAST-TRACK YOUR PROGRAM WITH ELITE GENETICS, RENOWNED FOR HITTING THE HIGHLIGHT REEL! THREE SEXED HEIFER EMBRYOS Sired BY THE RECORD-SELLING LT MARQUEE 169L, VALUED AT 1.4 MILLION!

3 HEIFER SEXED EMBRYOS BY LT MARQUEE 169L**LT MARQUEE 169L**

BLACK ANGUS REG.20879311 DB.03.29.2023 TATTOO.169L

CED	BW	WW	YW	DMI	CEM	MILK	RE	FAT	\$W	\$B
+0	+4.5	+72	+120	+1.12	+3	+21	+71	+023	+56	+138

U-2 COALITION 206C

PEAK DOT TOPSOIL 355G

MERIT INVESTMENT 1054J

MERIT FLORA 6078D

BAR-E-L DUCHESS 169J

BAR-E-L DUCHESS 76G



DUFF NAPOLEON 232, SIRE OF EMBRYOS



BAR-E-L NATURAL LAW 52Y



COLEMAN DONNA 504

OFFERED BY:**LUCAS REINHART - 405.334.2752 - PERKINS, OK****COLEMAN DONNA 1423**

BLACK ANGUS		REG.20335529		DB.06.29.2021		TATTOO.1423				
CED	BW	WW	YW	DMI	CEM	MILK	RE	FAT	SW	SB
+1	+3.1	+69	+132	+1.36	+3	+29	+1.08	+012	+59	+132

S A V BISMARCK 5682

S A V RESOURCE 1441

BAR-E-L NATURAL LAW 52Y**COLEMAN DONNA 504**

BAR-E-L MAGNOLIA 143K

COLEMAN DONNA 714

TOP 1% PHENOTYPE RIGHT HERE! THIS NATURAL LAW DAUGHTER IS A TRUE DONOR HIGHLIGHT FOR THIS YEAR'S ESSENTIALS SALE. 1423 IS LOADED WITH PERFORMANCE, MUSCLE, SPINE LENGTH, A PERFECT UDDER, AND BACKED BY THE ELITE MATERNAL QUEEN COLEMAN DONNA 504, WHO HAS A PROVEN TRACK RECORD OF PRODUCING THE HIGHEST-LEVEL SEEDSTOCK. 1423 HAS FOLLOWED HER PROVEN DAM'S FOOTSTEPS, PRODUCING INCREDIBLY WELL WITH EVEN MORE TOTAL EYE APPEAL! PROVEN MATING HERE Sired BY THE ELITE DUFF NAPOLEON 232!

3 IVF EMBRYOS BY DUFF NAPOLEON 232**DUFF NAPOLEON 232**

BLACK ANGUS		REG.17780630		DB.02.22.2012		TATTOO.232				
CED	BW	WW	YW	DMI	CEM	MILK	RE	FAT	\$W	\$B
+11	+2	+54	+85	+19	+5	+11	+60	+044	+41	+67

DUFF BASIC INSTINCT 6501

DUFF NEWBORN 1423

DUFF DISTINCTION 9105**DUFF EUR 443 MERLE**

DUFF NL B351 LADY POP 619

DCC N



DUFF RIZZ 22271, SIRE OF EMBRYOS

OFFERED BY:

SADLER RANCHES - 405.334.2752 - PERKINS, OK

DUFF DIXIE ERICA 1986 2137

RED ANGUS REG.4501217 DB.02.28.2021 TATTOO.2137

CED	BW	WW	YW	DMI	CEM	MILK	REA	FAT	HB	GM
7	2.0	83	122	0.97	5	32	0.26	-0.00	25	36

ROJAS RIOJA 6052

MANN RED BOX 55C

DUFF RED BLOOD 18114

DUFF DIXIE ERICA 16148 1986

DUFF JUANADA 927K 15124

DUFF DIXIE ERICA 210 16148

3 IVF EMBRYOS BY DUFF RIZZ 22271**DUFF RIZZ 22271**

RED ANGUS REG.4605605 DB.03.10.2022 TATTOO.22271

CED	BW	WW	YW	DMI	CEM	MILK	REA	FAT	HB	GM
18	-2.3	62	91	0.12	7	23	-0.01	0.01	67	6

MANN RED BOX 55C

RED RINGSTEAD KARGO 215U

DUFF HD 2046

RED BLAIR'S MANDY 1B

DUFF CITA 4060 15522

RED KENRAY MANDY 16Z

AN ABSOLUTE HIGHLIGHT OF THIS YEAR'S OFFERING! THIS FEMALE IS ULTRA-COMPLETE AND WITH EXCEPTIONAL PRESENCE. HER LINES ARE FLAWLESS, BOLD THROUGH HER CENTER BODY, SOFT STRUCTURED, AND INCREDIBLY CORRECT IN HER ANGLES. 2137 IS SHEER COW POWER TO THE MAX, WITH OVERALL DIMENSION AND MATERNAL PRESENCE. SHE HANDLES HERSELF ELEGANTLY ON THE MOVE WITH A HUGE, CONFIDENT STRIDE AND MAXIMUM SKELETAL FLEXIBILITY. ALL THE WHILE, SHE IS REMARKABLY HUGE-BODIED, WITH TREMENDOUS UDDER QUALITY. ASIDE FROM HER PHENOTYPICAL ADVANTAGES, SHE HAS A PEDIGREE THAT NEEDS LITTLE INTRODUCTION TO THE RED ANGUS BREED. A DAUGHTER OF THE POPULAR DUFF RED BLOOD 18114 OUT OF THE BEAUTIFUL, PATTERNED MANN RED BOX 55C DAUGHTER DUFF DIXIE ERICA 16148 1986. THIS IS AN EPIC MATING THAT YOU CAN BUILD A PROGRAM AROUND. RED WARRIOR 21104 - THIS POWERFUL, PERFORMANCE-DRIVEN SON OF MAXED OUT HAS ALL THE BELLS AND WHISTLES MASH-THE-SCALES KIND OF MUSCLE, BODY SHAPE, AND LENGTH. UNMEASURABLE OPPORTUNITY HERE!





BLAIR'S EXTERNAL LAW, SIRE OF 31L



COLEMAN DOUBLE DOWN 3169, SIRE OF EMBRYOS

OFFERED BY:**INGRAM ANGUS - 256.239.8540 - PULASKI, TN****BCC EVERELDA ENTENSE 31L**

ANGUS REG.20715473 DB.02.17.2023 TATTOO.31L

CED	BW	WW	YW	DMI	CEM	MILK	RE	FAT	SW	\$B
+4	+1.9	+60	+90	+60	-5	+18	+.71	+.030	+56	+99

DUFF NAPOLEON 232

S A V RENOVATION 6822

BLAIR'S EXTERNAL LAW

BAR-E-L ERICA 74A

BCC EVERELDA ENTENSE 79H

SCC EVERELDA ENTENSE 86U

A FEATURED INGRAM DONOR FEMALE Sired by BLAIR'S EXTERNAL LAW back to a daughter of SAV RENOVATION 6822 and the featured SITZ EVERELDA ENTENSE 1905, one of the most influential females in the Angus breed! Phenotypically, you cannot draw one out that looks any cooler or has a better udder. Her first offspring stood out in the pack at the 2025 INGRAM ANGUS PRODUCTION SALE. L31 herself had an individual birth ratio of 95, a weaning ratio of 101, and stems from a dam that records BR 3@93, WR 4@105, YR 2@105, %IMF 2@110, and UREA 2@101.

3 HEIFER SEXED EMBRYOS BY COLEMAN DOUBLE DOWN 3196**COLEMAN DOUBLE DOWN 3169**

ANGUS REG.20800144 DB.01.18.2023 TATTOO.2196

CED	BW	WW	YW	DMI	CEM	MILK	RE	FAT	SW	\$B
+13	-.7	+59	+105	+1.74	+10	+26	+.69	+.042	+66	+122

COLEMAN ACE 989

COLEMAN BRAVO 6313

COLEMAN FULL DECK 118

COLEMAN DONNA 927

COLEMAN BLOSSOM 1103

PM BLOSSOM 124'13



SIX MILE PARABELLEUM 675G, SIRE OF LOT 17A



DUFF FAIR WIND 21197, SIRE OF LOT 17B



PELTON MISS AJA 0839U, DAM OF 701

OFFERED BY:**MAPLE OAKS RED ANGUS 314.630.0332****PLEASANT HILL CATTLE 417.849.9966****FHSU MANN MS AJA 104 701**

RED ANGUS		REG.3930561			DB.02.02.2018			TATTOO.01E		
CED	BW	WW	YW	DMI	CEM	MILK	REA	FAT	HB	GM
4	1.3	72	109	0.74	3	32	0.05	-0.02	28	9

RED SIX MILE SAKIC 832S

5L NORSEMAN KING 2291

PZC TMAS FIRESTORM 1800 ET
GT CITA 4060

PELTON MISS AJA 0839U

PELTONS MISS IDA 0547R

A VALID SALE HIGHLIGHT FOR THE SECOND ANNUAL ESSENTIALS SALE! BIG-TIME PROVEN DONOR FEMALE WITH THREE DAUGHTERS WHO RECENTLY SOLD FOR AN AVERAGE OF 12,500 IN THE 2024 POWER PLUS FEMALE SALE TO BACK UP HER DOMINANT FORCE OF PRODUCTION. 701 IS A MATERNAL SISTER TO THE PHENOM RED BOX 55C AND THE CURRENT POWER PLUS HERD SIRE THAT SOLD FOR ½ INTEREST FOR \$180,000, DUFF FEARLESS. THIS FEMALE WILL PRODUCE SOLID INCOME AND IS NOTORIOUS FOR PRODUCING PHENOTYPE, DEPTH OF BODY MUSCLE, AND EYE APPEAL GALORE! GENETICALLY BUILT TO PRODUCE FUNCTIONAL, BALANCED FEMALES AND POWER BULLS THAT WILL TAKE ANY PROGRAM IN THE RIGHT DIRECTION. SELLING SEXED HEIFER EMBRYOS Sired BY THE EXTREMELY RARE RED SIX MILE PARABELLEUM 675G, WHERE SEMEN ALONE HAS FETCHED NORTH OF \$1,500 PER STRAW IF YOU CAN FIND IT! AND SELLING EMBRYOS Sired BY THE NOW DECEASED DUFF FAIR WIND 21197, WHO, IN A SHORT PERIOD, PRODUCED EPIC PHENOTYPIC FEMALES IN MANY PROGRESSIVE PROGRAMS

A 3 IVF EMBRYOS BY SIX MILE PARABELLEUM 675G SIX MILE PARABELLEUM 675G

RED ANGUS		REG.4161396			DB.04.02.2019			TATTOO.675G		
CED	BW	WW	YW	DMI	CEM	MILK	REA	FAT	HB	GM
4	4.4	79	125	0.54	4	26	0.31	0.01	15	47

RED U-2 RECKONING 149A

MRLA NEW ERA 87Y

SIX MILE JOHN WICK 882E

RED SIX MILE KURUBA 712A

RED SIX MILE & CO GLORIA 29A

RED SIX MILE KURUBA 319X

B 3 IVF EMBRYOS BY DUFF FAIR WIND 21197 DUFF FAIR WIND 21197

RED ANGUS		REG.4575509			DB.02.22.2021			TATTOO.21197		
CED	BW	WW	YW	DMI	CEM	MILK	REA	FAT	HB	GM
10	2.0	71	111	0.76	4	28	0.11	0.01	35	29

SLGN WIDELOAD 920W

DUFF E BLAST 8138

MANN RED BOX 55C

DUFF CITA 4060 15508

PELTON MISS AJA 0839U

GT CITA 4060



PINE COULEE DIXIE ERICA F202, DAM OF L36



COLEMAN DOUBLE DOWN 3169, SIRE OF EMBRYOS

OFFERED BY:**INGRAM ANGUS - 256.239.8540 - PULASKI, TN****PINE COULEE DIXIE ERICA L36**

ANGUS REG.20640149 DB.01.20.2023 TATTOO.L36

CED	BW	WW	YW	DMI	CEM	MILK	RE	FAT	\$W	\$B
+5	+1.6	+64	+110	+1.30	+5	+21	+42	+0.056	+60	+111

LD CAPITALIST 316

O C C JUNEAU 807J

INGRAM INTENSITY 0030**PINE COULEE DIXIE ERICA F202**

INGRAM EVERELDA ENTENSE 8525

COLEMAN DIXIE ERICA 8273

SEXED HEIFER EMBRYOS - A DAUGHTER OF THE \$74,000-VALUED INGRAM INTENSITY 0030, BACK TO THE FEATURED DIXIE ERICA FAMILY. THIS FEMALE STEMS FROM A DAM WHO RECORDS BR 4@92, WR 2@105, YR 1@101, AND THE LADIES OF THE BEARTOOTH'S SALE TOPPER PINE COULEE DIXIE ERICA F202, HER DAM, IS A MATERNAL SISTER TO COLEMAN DIXIE ERICA 7117 WHO PRODUCED THE \$60,000 ONE-HALF INTEREST FOR A \$120,000 VALUATION FEATURE OF THE 2024 YOUR MATERNAL SOURCE SALE, COLEMAN DIXIE ERICA 1154, AND THE \$12,000 COLEMAN DIXIE ERICA 953. COLEMAN DIXIE ERICA 8273, HER GRANDDAM, IS THE \$26,000 FEATURE, BACKED BY THE HIGH-INCOME-PRODUCING COLEMAN DIXIE ERICA 143.

3 HEIFER SEXED EMBRYOS BY COLEMAN DOUBLE DOWN 3196**COLEMAN DOUBLE DOWN 3169**

ANGUS REG.20800144 DB.01.18.2023 TATTOO.2196

CED	BW	WW	YW	DMI	CEM	MILK	RE	FAT	\$W	\$B
+13	-.7	+59	+105	+1.74	+10	+26	+.69	+.042	+66	+122

COLEMAN ACE 989

COLEMAN BRAVO 6313

COLEMAN FULL DECK 118**COLEMAN BLOSSOM 1103**

COLEMAN DONNA 927

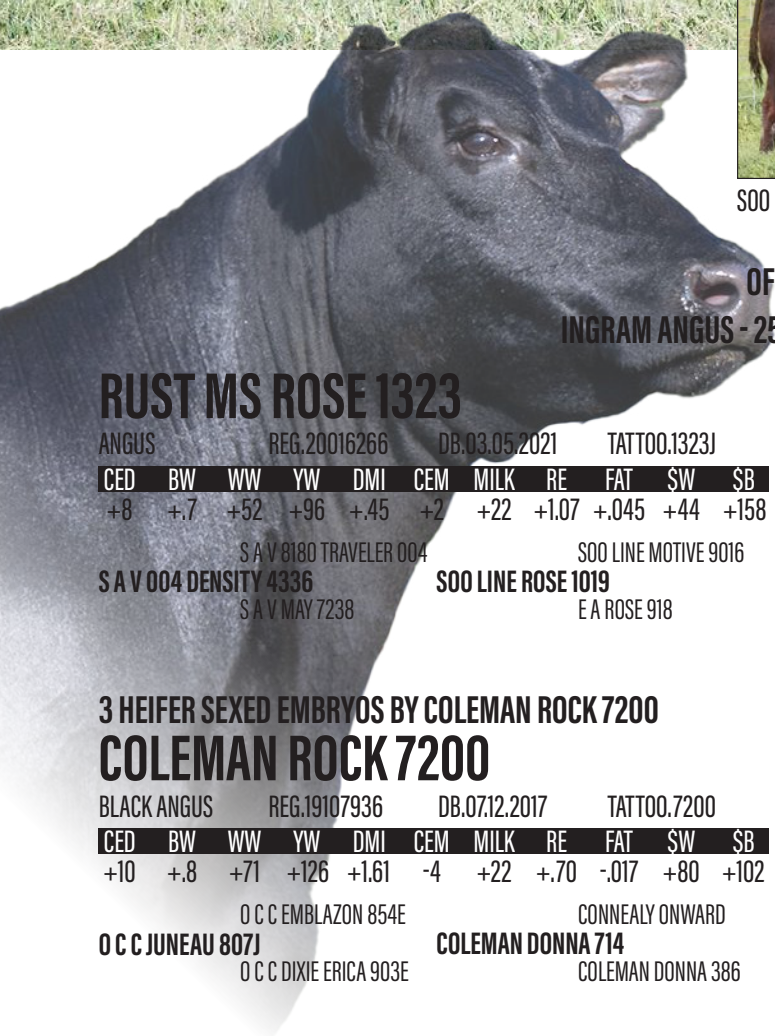
PM BLOSSOM 124'13



SOO LINE ROSE 1019, DAM OF 1323



COLEMAN ROCK 7200, SIRE OF EMBRYOS



RUST MS ROSE 1323

ANGUS REG.20016266 DB.03.05.2021 TATTOO.1323J

CED	BW	WW	YW	DMI	CEM	MILK	RE	FAT	SW	\$B
+8	+7	+52	+96	+45	+2	+22	+1.07	+.045	+44	+158

S A V 8180 TRAVELER 004

S A V 004 DENSITY 4336

S A V MAY 7238

SOO LINE MOTIVE 9016

SOO LINE ROSE 1019

E A ROSE 918

3 HEIFER SEXED EMBRYOS BY COLEMAN ROCK 7200 COLEMAN ROCK 7200

BLACK ANGUS REG.19107936 DB.07.12.2017 TATTOO.7200

CED	BW	WW	YW	DMI	CEM	MILK	RE	FAT	SW	\$B
+10	+8	+71	+126	+1.61	-4	+22	+.70	-.017	+80	+102

O C C EMBLAZON 854E

O C C JUNEAU 807J

O C C DIXIE ERICA 903E

CONNEALY ONWARD

COLEMAN DONNA 714

COLEMAN DONNA 386

OFFERED BY:

INGRAM ANGUS - 256.239.8540 - PULASKI, TN

RUST MS ROSE 1323, THE \$65,000 TOP-SELLING FULL-INTEREST FEMALE OF THE 2025 INGRAM FALL PRODUCTION SALE, WENT TO VOSS ANGUS OF IOWA AND ZWT RANCH OF TENNESSEE. THIS FEATURED ROSE FEMALE BY THE PATHFINDER SIRE, SAV 004 DENSITY 4336, STEMS BACK TO SOO LINE ROSE 1019, ONE OF THE ALL-TIME GREAT-PRODUCING FEMALES IN THE BROOKING ANGUS RANCH PROGRAM IN CANADA, AND A DAUGHTER OF EA ROSE 918, A FEATURED DONOR FEMALE IN THE ZWT RANCH PROGRAM IN TENNESSEE. BROOKING REVIVAL 0074, A MATERNAL BROTHER TO THIS DONOR, WAS THE LEAD-OFF BULL IN THE 2021 BROOKING ANGUS RANCH SALE AND IS A FEATURED HERD SIRE IN THE MONTANA RANCH PROGRAM; OTHER MATERNAL BROTHERS INCLUDE BROOKING REAL ESTATE 6072, THE HIGH-SELLING BULL OF THE 2017 BROOKING ANGUS RANCH SALE, AND BROOKING NATIONAL 0144. BROOKING BANK NOTE 4040, A MATERNAL BROTHER TO THE GRANDDAM OF THESE EMBRYOS, WAS THE \$125,000 TOP-SELLING BULL OF A PAST BROOKING ANGUS RANCH PRODUCTION SALE.



RED U-2 TOWNSHIP 17G, SON OF 113Z



RED WILBAR HENNESSY 3K, SIRE OF EMBRYOS

OFFERED BY:**POWER PLUS CATTLE - 580-726-3313- HOBART, OK****U-2 BEAUTY 113Z**

RED ANGUS CAA.1680055 DB.01.12.2012 TATTOO.113Z

CED	BW	WW	YW	DMI	CEM	MILK	RE	FAT	MW	CBI
-2.0	+2.2	+42	+61	-0.19	+23	+22	+0.44	-0.044	+13	+213

RED FLYING K AMBUSH 6T

RED U-2 DYNAMO 7021T

RED U-2 MAMA'S BOY 167X

RED U-2 BEAUTY 48X

RED FLYING LAKOTA 104U

RED FLYING K BEAUTY 6N

YOU COULD SPEND A LIFETIME FINDING A DONOR FEMALE AS POTENT AND INFLUENTIAL AS 113Z. HER PRODUCTION RECORD TO DATE IS IN A LEAGUE OF HER OWN - PRODUCING FOUR CONSECUTIVE SONS THAT AVERAGED \$38,000, INCLUDING HIGH VALLEY FOR \$35,000 AND BLINDSIDE FOR \$97,000. FOOT QUALITY, UDDER STRUCTURE, POWER, SHAPE, AND A BOLD BODY TYPE ARE THE TRAITS SHE WILL INJECT EVERY SINGLE TIME. SHE DOES IT IN HER DIRECT OFFSPRING, AND HER OFFSPRING ARE PROVING TO PASS ON THOSE SAME TRAITS AS WELL. CONSISTENTLY AND ARGUABLY BETTER THAN ANY RED ANGUS COW IN THE BREED!

3 IVF EMBRYOS BY RED WILBAR HENNESSY 3K
RED WILBAR HENNESSY 3K

RED ANGUS REG.4852562 DB.01.10.2022 TATTOO.3K

CED	BW	WW	YW	DMI	CEM	MILK	REA	FAT	HB	GM
15	-2.8	79	136	1.56	10	30	-0.25	0.05	54	56

NCJ COMING IN HOT 24E

RED DKF RAZOR 5C

RED WILBAR HIGHLIGHT 624H

RED WILBAR LANA 4F

RED WILBAR DOLL 776C

RED WILBAR LANA 129D



SAV TERRITORY 7225, SIRE OF LOT 18A & 18B

OFFERED BY:

BRACKEL RIDGE CATTLE - 607.345.0880 - CINCINNATUS, NY

RED RAINBOW LARK 6E

RED ANGUS		REG.4905114			DB.02.01.2017			TATTOO.6E		
CED	BW	WW	YW	DMI	CEM	MILK	REA	FAT	HB	GM
13	-1.0	58	88	0.50	8	30	0.05	-0.0	54	20

RED SVR GANGSTER 44X
RED MOOSE CREEK WESTON 23B
 RED MOOSE CREEK LANA 108Z

RED LAZY MC SMASH 41N
RED STEWART LARK 602S
 RED SVR MISS LARK 100P

A 3 IVF EMBRYOS, GUARANTEE 1 PREGNANCY
S A V TERRITORY 7225

BLACK ANGUS		REG.18913034			DB.02.28.2017			TATTOO.7225		
CED	BW	WW	YW	DMI	CEM	MILK	RE	FAT	\$W	\$B
+3	+2.7	+79	+134	+1.26	+2	+20	+.97	+.060	+66	+143

RITO 707 OF IDEAL 3407 7075
S A V RESOURCE 1441
 S A V BLACKCAP MAY 4136

S A V 004 DENSITY 4336
S A V EMBLYNETTE 3293
 S A V EMBLYNETTE 7411

B 5 UNITS OF S A V TERRITORY 7225

RED RAINBOW LARK 6E IS ONE OF THE MOST INTRIGUING FEMALES EVER TO HIT OUR PROGRAM! VWE PURCHASED HER FROM THE RAINBOW RED ANGUS DISPERSAL IN 2023, WHERE SHE WAS ALREADY MAKING WAVES. SHE IS THE MOTHER OF THE HIGH-SELLING FEMALE FROM THAT EVENT—A STANDOUT THAT SOLD TO NIOBRARA RED ANGUS FOR \$55,000. HER INFLUENCE DOESN'T STOP THERE: THREE OF HER DAUGHTERS HAVE AVERAGED OVER \$25,000, SHOWING THE REMARKABLE CONSISTENCY AND MARKETABILITY IN HER LINEAGE. PHENOTYPICALLY, LARK 6E IS EVERYTHING YOU WANT IN A RED ANGUS FEMALE: BEAUTIFUL, FEMININE FRONTED, EXCELLENT FEET AND STRUCTURE, A SUPERIOR, WELL-ATTACHED UDDER, DESIGNATED, PROVEN PRODUCTION, AND LONGEVITY. WE ARE OFFERING EMBRYOS BY SAV TERRITORY 7225, CREATING A TRULY ELITE MATING. TERRITORY DAUGHTERS ARE HIGHLY SOUGHT AFTER, AND WITH HIS SEMEN BECOMING INCREASINGLY RARE, THE OPPORTUNITY TO ACCESS THESE GENETICS IS QUICKLY BECOMING LIMITED. TERRITORY STAMPS HIS DAUGHTERS WITH POWER, STRUCTURE, CAPACITY, DOCILITY, AND BREED-LEADING MATERNAL ABILITY, SELLING 3 GRADE-1 SEXED FEMALE IVF EMBRYOS, GUARANTEEING 1 PREGNANCY IF IMPLANTED BY A CERTIFIED TECH.



OFFERED BY:

LB LIVESTOCK - 417. 321. 9417 - SHELDON, MO

ROSEBUD CATTLE COMPANY - 620.376.8218 - ABILENE, KS

NIOBRARA RED ANGUS - 402.484.4889 - LINCOLN, NE

POPLAR RIDGE FARMS - 405.613.7946 - FAR HILLS, NJ

NIO POPF LEGIT 3302

RED ANGUS REG.4844176 DB.01.24.2023 TATTOO.3302

CED	BW	WW	YW	DMI	CEM	MILK	REA	FAT	HB	GM
10	-1.2	73	116	1.04	6	30	0.13	0.02	52	52

RED BAR-E-L APPROVAL 4L

BROWN UNRIVALED A7552

H/H EEG STEALTH 9122

RED RAINBOW LARKABA 39G

RED RAINBOW LARKABA 29X

HMYH STONY'S BECCA 6800

BIG-TIME BEEF BULL WITH SHOW-RING STYLE BACKED BY THE ELITE LARKABA COW FAMILY, NOTORIOUS FOR PRODUCING PHENOTYPE PLUS MATERNAL EXCELLENCE. BORN AT 71 POUNDS, AND WEANING OFF AT 793, THIS DENSE MADE, SOGGY MIDDLED, POWERHOUSE OF A BULL WILL HELP CATAPULT ANY CALF CROP FORWARD. MOST WOULDN'T KNOW IT, BUT NIO POPF LEGIT 3302 IS ACTUALLY A FULL-SISTER TO THE RESERVE GRAND CHAMPION FEMALE AT THE CATTLEMEN'S CONGRESS FOR ADDISON VOWELL IN 2023. PHENOTYPIC DOMINANCE WILL BE IN THE FUTURE FOR THE PROGRAM THAT BUYS THIS LIMITED-TIME OFFER OF SEMEN ON LEGIT! TOP 10% WW, TOP 15% YW, NOT ONLY WILL THIS STUD CALVE EASILY AND ADD EXTRA POUNDS, BUT IT WILL ALSO ADD SOUGHT-AFTER PROVEN GENETICS.

- A** 2 UNITS OF SEXED HEIFER NIO POPF LEGIT 3302
- B** 2 UNITS OF SEXED HEIFER NIO POPF LEGIT 3302
- C** 2 UNITS OF SEXED HEIFER NIO POPF LEGIT 3302
- D** 2 UNITS OF SEXED HEIFER NIO POPF LEGIT 3302
- E** 2 UNITS OF SEXED HEIFER NIO POPF LEGIT 3302



RED WILBAR LANA 4F, DAM OF 3K

OFFERED BY:

WILBAR CATTLE CO - 306.492.7504 - DUNBURN, SK

ROCHRICH'S CUTTING EDGE RANCH - 701.391.1911 - STEELE, ND

RED WILBAR HENNESSY 3K

RED ANGUS		REG.4852562			DB.01.10.2022			TATTOO.3K		
CED	BW	WW	YW	DMI	CEM	MILK	REA	FAT	HB	GM
15	-2.8	79	136	1.56	10	30	-0.25	0.05	54	56

NCJ COMING IN HOT 24E

RED DKF RAZOR 5C

RED WILBAR HIGHLIGHT 624H

RED WILBAR LANA 4F

RED WILBAR DOLL 776C

RED WILBAR LANA 129D

Wilbar Hennessey, the Grand Champion overall, breeds Red Angus Beef Bull in the 2024 Canadian Agribison. Hennessey semen is limited and recently sold only one time in the U.S. and fetched \$750.00 per straw. The time is now to infuse these elite genetics into your herd! Power, maternal, look and overall quality.

A

3 UNITS SEXED HEIFER RED WILBAR HENNESSY 3K

B

3 UNITS SEXED HEIFER RED WILBAR HENNESSY 3K

C

3 UNITS SEXED HEIFER RED WILBAR HENNESSY 3K

D

3 UNITS SEXED HEIFER RED WILBAR HENNESSY 3K



DUFF FEARLESS 20123, SIRE OF 23101

OFFERED BY:

TRADEMARK GENETICS - 281.599.8646 - HEMPSTEAD, TX

DUFF NO FEAR 23101

RED ANGUS	REG.4765625	DB.01.30.2023	TATTOO.23101							
CED	BW	WW	YW	DMI	CEM	MILK	REA	FAT	HB	GM
10	-0.9	56	83	0.10	4	25	0.29	0.01	41	32

DUFF-JC 4REAL 16250

MANN RED BOX 55C

DUFF FEARLESS 20123**DUFF DIXIE ERICA 15403 1977**

PELTON MISS AJA 0839U

DUFF DIXIE ERICA 2620 15403A

SEXED HEIFER AND EXPORTABLE SEMEN OFFERING. DUFF NO FEAR IS THE ULTIMATE IN POWER, WIDE-BASED, AND OVERALL BALANCE. STUDY THE FLEXIBILITY AND MUSCLE OVER HIS TOPLINE AND DOWN HIS STIFLE, ADDED BONE, DEPTH OF RIB, AND PHENOTYPE. NO FEAR WAS THE HIGHLIGHTED RED ANGUS SIRE THAT SOLD FOR \$65,000 IN THE 2025 POWER PLUS BULL SALE TO TRADEMARK GENETICS. NO FEAR'S SIRE, DUFF FEARLESS, IS WELL ON HIS WAY TO STARDOM IN THE RED AND BLACK ANGUS BREEDS. A MATERNAL BROTHER WAS SOLD IN THE 2024 P+ BULL SALE TO CR FREEMAN FOR \$17,000. DON'T MISS THIS INVESTMENT OPPORTUNITY TO ADD SERIOUS VALUE TO YOUR NEXT CALF CROP. THIS IS THE FIRST TIME OFFERING SEXED HEIFER AND CSS SEMEN ON DUFF NO FEAR!

A

2 UNITS OF SEXED HEIFER DUFF NO FEAR 23101

B

2 UNITS OF SEXED HEIFER DUFF NO FEAR 23101

C

2 UNITS OF SEXED HEIFER DUFF NO FEAR 23101

D

2 UNITS OF SEXED HEIFER DUFF NO FEAR 23101



DUFF FEARLESS 20123, SIRE OF 23101

OFFERED BY:

TRADEMARK GENETICS - 281.599.8646 - HEMPSTEAD, TX

DUFF NO FEAR 23101

RED ANGUS		REG.4765625			DB.01.30.2023			TATTOO.23101		
CED	BW	WW	YW	DMI	CEM	MILK	REA	FAT	HB	GM
10	-0.9	56	83	0.10	4	25	0.29	0.01	41	32

DUFF-JC 4REAL 16250

MANN RED BOX 55C

DUFF FEARLESS 20123

PELTON MISS AJA 0839U

DUFF DIXIE ERICA 15403 1977

DUFF DIXIE ERICA 2620 15403A

SEXED HEIFER AND EXPORTABLE SEMEN OFFERING. DUFF NO FEAR IS THE ULTIMATE IN POWER, WIDE-BASED, AND OVERALL BALANCE. STUDY THE FLEXIBILITY AND MUSCLE OVER HIS TOPLINE AND DOWN HIS STIFLE, ADDED BONE, DEPTH OF RIB, AND PHENOTYPE. NO FEAR WAS THE HIGHLIGHTED RED ANGUS SIRE THAT SOLD FOR \$65,000 IN THE 2025 POWER PLUS BULL SALE TO TRADEMARK GENETICS. NO FEAR'S SIRE, DUFF FEARLESS, IS WELL ON HIS WAY TO STARDOM IN THE RED AND BLACK ANGUS BREEDS. A MATERNAL BROTHER WAS SOLD IN THE 2024 P+ BULL SALE TO CR FREEMAN FOR \$17,000. DON'T MISS THIS INVESTMENT OPPORTUNITY TO ADD SERIOUS VALUE TO YOUR NEXT CALF CROP. THIS IS THE FIRST TIME OFFERING SEXED HEIFER AND CSS SEMEN ON DUFF NO FEAR!

A CSS CERTIFIED\EXPORTABLE
10 UNITS OF DUFF NO FEAR 23101

B CSS CERTIFIED\EXPORTABLE
10 UNITS OF DUFF NO FEAR 23101

C CSS CERTIFIED\EXPORTABLE
10 UNITS OF DUFF NO FEAR 23101



SADLER DONNA 2513, FULL SIBLING TO EMBRYOS
SOLD FOR \$90,000



COLEMAN DONNA 504, DAM OF 8292



BLAIR'S EXTERNAL LAW, SIRE OF EMBRYOS

OFFERED BY:

DAVID IMHOFF - 405.760.3508 - STROUD, OK

COLEMAN DONNA 8292

BLACK ANGUS		REG.19400618		DB.07.05.2018		TATTOO.8292				
CED	BW	WW	YW	DMI	CEM	MILK	RE	FAT	\$W	\$B
+8	+2.6	+71	+130	+1.28	+3	+29	+84	+0.09	+73	+130

COLEMAN CHARLO 0256 S A V RESOURCE 1441
S A V PRESIDENT 6847 COLEMAN DONNA 504
S A V BLACKCAP MAY 4136 COLEMAN DONNA 714

COLEMAN DONNA 8292 IS AN EXTREMELY IMPRESSIVE, PERFORMANCE-DRIVEN FEMALE THAT IS DEEP BODIED AND WEDGES UP INTO AN ANGULAR FRONT END. SHE HAS A PERFECT UDDER AND A HIGH LEVEL OF PHENOTYPE AND MUSCLE MASS. 8292 RECORDS A TOP 1%\$M AND TOP 10% \$W BOTH THAT CARRY A LOT OF VALUE IN TODAY'S ANGUS BASE. HER DAM, COLEMAN DONNA 504, HAS BEEN AN IMMENSELY POPULAR PRODUCER OFFSPRING THAT MASHES THE SCALES WITH A SUBSTANTIAL AMOUNT OF EYE APPEAL. A FULL SIBLING TO THE EMBRYOS BEING SOLD BROUGHT \$90,000 THROUGH THE SADLER RANCHES PRODUCTION SALE TO LT ANGUS. DON'T MISS THIS TREMENDOUS OPPORTUNITY TO PURCHASE PROVEN, PREDICTABLE EMBRYOS.

3 IVF EMBRYOS BY BLAIR'S EXTERNAL LAW

BLAIR'S EXTERNAL LAW

BLACK ANGUS		REG.19639203			DB.02.16.2018			TATTOO.266F		
CED	BW	WW	YW	DMI	CEM	MILK	RE	FAT	\$W	\$B
+3	+2.1	+60	+89	+2.6	+1	+17	+67	+012	+52	+70

DUFF DISTINCTION 9105 BAR-E-L NATURAL LAW 52Y
DUFF NAPOLEON 232 BAR-E-L ERICA 74A
DUFF EUR 443 MERLE 808 HF ERICA 339T



COLEMAN DONNA 4203, DAM OF 9309



DUFF NAPOLEON 232, SIRE OF EMBRYOS

OFFERED BY:**POWER PLUS CATTLE - 580-726-3313- HOBART, OK****COLEMAN DONNA 9309**

BLACK ANGUS REG.19583466 DB.06.22.2019 TATTOO.9309

CED	BW	WW	YW	DMI	CEM	MILK	RE	FAT	\$W	\$B
+14	-.1	+69	+134	+1.86	+11	+35	+48	+.025	+81	+144

COLEMAN CHARLO 0256

CONNEALY THUNDER

COLEMAN BRAVO 6313

COLEMAN DONNA 714

COLEMAN DONNA 4203

COLEMAN DONNA 714

COLEMAN DONNA 9309 IS A HIGHLY REGARDED ANGUS DONOR FEMALE. SHE HAS BECOME A MATERNAL POWERHOUSE IN THE ANGUS BREED, WITH HER PROGENY AVERAGING OVER \$30,000 AT SALES IN 2025. THE "DONNA" FAMILY AT COLEMAN ANGUS IS ONE OF THE MOST INFLUENTIAL MATERNAL LINES IN THE BREED, KNOWN FOR FERTILITY, LONGEVITY, AND BALANCED PERFORMANCE. 9309'S MATERNAL LINE IS SOUGHT AFTER FOR BUILDING HERDS WITH LONGEVITY AND CONSISTENCY. HERE IS A MEGA OPPORTUNITY TO PURCHASE EMBRYOS FROM A PROVEN SOURCE IN THE SALE RING AND DOMINATING IN THE PASTURE.

3 IVF EMBRYOS BY DUFF NAPOLEON 232**DUFF NAPOLEON 232**

BLACK ANGUS REG.17780630 DB.02.22.2012 TATTOO.232

CED	BW	WW	YW	DMI	CEM	MILK	RE	FAT	\$W	\$B
+11	+.2	+54	+85	+.19	+5	+11	+.60	+.044	+41	+67

DUFF BASIC INSTINCT 6501

DUFF NEW EDITION 6108

DUFF DISTINCTION 9105

DUFF NL B351 LADY POP 619

DUFF EUR 443 MERLE 808

DCC NL 652K MERLE 443



DUFF SMASH 2145, GRANDSON OF 117S



MANN RED BOX 55C, SIRE OF LOT 25A



DUFF RED WOOD 1941, SIRE OF LOT 25B

OFFERED BY:

POWER PLUS CATTLE - 580-726-3313- HOBART, OK

RED EGGEN SMASH MISS 117S

RED ANGUS REG.1567196 DB.02.03.2006 TATTOO.117S

CED	BW	WW	YW	DMI	CEM	MILK	REA	FAT	HB	GM
13	-1.6	53	81	0.54	4	35	0.13	-0.01	46	0

SSS BOOMER 803B

LMAN KING ROB 8621

RED LAZY MC SMASH 41N

RED EGGEN KING ROB MISS 61L

RED LAURON YB ROSA 11G

RED SPUR COUNTESS 20E

RED EGGEN SMASH MISS 117S IS A FOUNDATION RED ANGUS DONOR FEMALE KNOWN FOR HER INFLUENCE IN MANY POPULAR PEDIGREES, PARTICULARLY AS THE DAM OF SEVERAL NOTABLE HERD SIRES LIKE DUFF SMASH 2145. SHE TRACES BACK TO THE RED LAZY MC SMASH 41N LINE AND HAS CONTRIBUTED TO STRONG MATERNAL AND PERFORMANCE TRAITS IN MANY BREEDING PROGRAMS. THIS IS THE VERY LAST OF THE EMBRYOS IN THE INVENTORY OF THIS HIGH-PERFORMING DONOR. TAKE YOUR CHOICE OF EMBRYOS Sired BY THE PROVEN MANN RED BOX 55C OR DUFF RED WOOD 1941!

A 3 IVF EMBRYOS BY MANN RED BOX 55C

MANN RED BOX 55C

RED ANGUS REG.3525359 DB.09.06.2015 TATTOO.55C

CED	BW	WW	YW	DMI	CEM	MILK	REA	FAT	HB	GM
9	1.1	74	117	0.79	3	31	0.28	0.01	18	41

UBAR HIGH CAPACITY 224

5L NORSEMAN KING 2291

SLGN WIDELOAD 920W

PELTON MISS AJA 0839U

MEADO-WEST PERSUASION

PELTONS MISS IDA 0547R

B 3 IVF EMBRYOS BY DUFF RED WOOD 1941

DUFF RED WOOD 1941

RED ANGUS REG.4221872 DB.01.24.2019 TATTOO.1941

CED	BW	WW	YW	DMI	CEM	MILK	REA	FAT	HB	GM
10	-0.2	59	87	0.60	5	20	0.17	0.04	63	21

RED BLAIRS BINGO 581B

WCR HAMMELECH 812Z

DUFF CORNERSTONE 16136

DUFF DIXIE ERICA 144 1532

DUFF JUANADA 927K 246

DUFF BL 505 DIXIEERICA 144



COLEMAN DONNA 714, DAM OF 7231



COLEMAN ROCK 7200, SIRE OF EMBRYOS

OFFERED BY:**PINE COULEE ANGUS - 406.780.1230 - 406.425.4292 - ABSAROOKEE, MT****COLEMAN DONNA 7231**

BLACK ANGUS REG.19108071 DB.07.05.2017 TATTOO.7231

CED	BW	WW	YW	DMI	CEM	MILK	RE	FAT	\$W	\$B
+12	-.1	+58	+110	+2.16	+7	+30	+.74	+0	+61	+107

RITO 707 OF IDEAL 3407 7075

CONNEALY ONWARD

S A V RESOURCE 1441**COLEMAN DONNA 714**

S A V BLACKCAP MAY 4136

COLEMAN DONNA 386

COLEMAN DONNA 7231 VERY CLOSELY RESEMBLES HER MOTHER, THE FOUNDATION COW, COLEMAN DONNA 714. SHE IS A TICK STOUTER THAN HER MOTHER, YET IS VERY FEMININE AND MATERNAL. 7231 IS A PATHFINDER FEMALE WHO HAS A CALVING INTERVAL OF 366 DAYS ON HER FIRST FIVE CALVES AND A PROGENY PRODUCTION RECORD OF BR 5/96, NR 6/107, YR 6/105. SHE HAS A PERFECT UDDER, VERY LONG-SPINED, PERFECT FEET AND IS VERY WEDGE-SHAPED. THESE ROCK DAUGHTERS SHOULD BE OUTSTANDING.

3 SEXED HEIFER EMBRYOS BY COLEMAN ROCK 7200**COLEMAN ROCK 7200**

BLACK ANGUS REG.19107936 DB.07.12.2017 TATTOO.7200

CED	BW	WW	YW	DMI	CEM	MILK	RE	FAT	\$W	\$B
+10	+.8	+71	+126	+1.61	-4	+22	+.70	-.017	+80	+102

O C C EMBLAZON 854E

CONNEALY ONWARD

O C C JUNEAU 807J**COLEMAN DONNA 714**

O C C DIXIE ERICA 903E

COLEMAN DONNA 386



PINE COULEE EVER ENTENSE T25, DAM OF F50



ELLINGSON PROGRESSIVE, SIRE OF EMBRYOS

OFFERED BY:

PINE COULEE ANGUS - 406.780.1230 - 406.425.4292 - ABSAROTREE, MT

PINE COULEE EVER ENTENSE F50

BLACK ANGUS REG.19328318 DB.01.19.2018 TATTOO.F50

CED	BW	WW	YW	DMI	CEM	MILK	RE	FAT	\$W	\$B
+4	+2.2	+53	+92	+34	+5	+28	+72	+0.039	+49	+154

CONNEALY CAPITALIST 028

N BAR EMULATION EXT

LD CAPITALIST 316

PINE COULEE EVER ENTENSE T25

LD DIXIE ERICA 2053

BT EVERELDA ENTENSE 579L

AN EXCELLENT PRODUCER, EXCELLENT FEET, AND A FANTASTIC UDDER QUALITY. THE PHENOTYPE, RIB SHAPE, AND MUSCLE PULL THROUGH TO HER OFFSPRING IN A VISIBLE WAY; SHE IS THE PICTURE OF MATERNAL. SHE HAS A FINAL ANSWER 0035 ON TOP AND EMULATION EXT ON THE BOTTOM AND IS A DAUGHTER OF THE IMPACTFUL T25 DONOR.

**3 IVF EMBRYOS BY ELLINGSON PROGRESSIVE
ELLINGSON PROGRESSIVE**

BLACK ANGUS REG.20373996 DB.02.14.2022 TATTOO.2056

CED	BW	WW	YW	DMI	CEM	MILK	RE	FAT	\$W	\$B
+4	+4.4	+88	+150	+2.09	+10	+24	+1.13	-.041	+74	+176

S POWERPOINT WS 5503

KOUPAL ADVANCE 28

ELLINGSON PROFOUND 8155

EA BELLS GIRL 7617

EA ROSETTA 6157

EA BELLS GIRL 2181



OFFERED BY:

PREMIUM BEEF GENETICS - 405.880.0108 - PERKINS, OK

C-4 LAND & CATTLE - 918.399.3475 - PERKINS, OK

ROHRICH'S CUTTING EDGE RANCH - 701.475.2285 - STEELE, ND



RED SSS MOON PIE 680K, SIRE OF 4025

CER BLUE MOON 4025

RED ANGUS REG.4994949 DB.01.30.2024 TATTOO.4025

CED	BW	WW	YW	DMI	CEM	MILK	REA	FAT	HB	GM
16	-2.1	60	104	0.92	10	29	0.09	0.01	59	61

RED ALLISON MOONEY 62G

BROWN CRSB REDEEMED B5332

RED SSS MOON PIE 680K

CER MS EVIE 0114

RED SSS LARKABELLE 722G

CER MS AVIATOR 8126

FIRST TIME OFFERED! LOW BIRTH WITH ADDED STYLE! BRAND NEW OUTCROSS HEIFER BULL Sired by the extremely rare and popular RED SSS MOON PIE 680K. In last year's Essentials Sale, Moon Pie semen fetched \$4,200 per straw! CER BLUE MOON 4025 was our pick of the 2025 Cutting Edge Ranch Bull Sale. Blue Moon's sister CER EVIE 4006 sold to Sandridge Land & Cattle for \$47,000. Blue Moon has a cookie-cutter design, added muscle, a smooth front one-third, and an excellent head design. He's a once-in-a-blue-moon kind!

A

5 UNITS OF CER BLUE MOON 4025

B

5 UNITS OF CER BLUE MOON 4025

C

5 UNITS OF CER BLUE MOON 4025

D

5 UNITS OF CER BLUE MOON 4025

E

5 UNITS OF CER BLUE MOON 4025

F

5 UNITS OF CER BLUE MOON 4025





PVF CAPONE 2104, SIRE OF LOT 29A



S A V 004 DENSITY 4336, SIRE OF LOT 29B



BROOKING CONTINENTAL 3105, SIRE OF LOT 29C

OFFERED BY:

PREMIUM BEEF GENETICS - 405.385.1238 - PERKINS, OK

DUFF BLACKBIRD 1955

BLACK ANGUS					REG.20082414		DB.01.28.2019		TATTOO.1955		
CED	BW	WW	YW	DMI	CEM	MILK	RE	FAT	SW	SB	
+8	-.1	+49	+79	+.71	+6	+20	+.41	+.052	+49	+56	

DUFF NAPOLEON 232

DUFF NEW EDITION 6108

DUFF-JC 4REAL 16250

DUFF BLACKBIRD 741G 286

DUFF AMIGO 927K JUANADA 071

O C C BLACKBIR 741G

A 3 HEIFER SEXED EMBRYOS BY PVF CAPONE 2104

PVF CAPONE 2104

BLACK ANGUS		REG.20567999		DB.08.22.2022		TATTOO.2104				
CED	BW	WW	YW	DMI	CEM	MILK	RE	FAT	SW	SB
+15	-.8	+57	+103	+.98	+10	+26	+.98	-.053	+55	+149

PVF BLACKLIST 7077

C&C MCKINLEY 3000 EXAR

PVF DLX KING PIN 0058

PVF MISSIE 5245

PVF LUCY 4189

PVF MISSIE 0084

C THREE IVF EMBRYOS BY BROOKING CONTINENTAL 3105

BLACK ANGUS		CAA REG.2309167		DB.01.19.2023		TATTOO.JSTN 105L				
CED	BW	WW	YW	DMI	CW	MILK	RE	FAT	MW	CBI
-1.0	+4.2	+70	+126	+1.71	+54	+25	+.57	+.058	+91	+210

S A V RENOVATION 6822

S A V 004 DENSITY 4336

BROOKING EMERALD 9179

DUSTY'S COUNTRESS 22H

BROOKING BEAUTY 6051

BROOKING COUNTRESS 7077

B 3 IVF EMBRYOS BY S A V 004 DENSITY 4336

S A V 004 DENSITY 4336

BLACK ANGUS		REG.14725035			DB.03.25.2004			TATTOO.4336		
CED	BW	WW	YW	DMI	CEM	MILK	RE	FAT	SW	SB
+6	+3.8	+50	+88	+45	-1	+19	+.85	+.003	+31	+132

SITZ TRAVELER 8180

LEACHMAN RIGHT TIME

S A V 8180 TRAVELER 004

S A V MAY 7238

BOYD FOREVER LADY 8003

S A R PROSPECTOR MAY 9124

1955 IS A TRUE UNICORN FEMALE LOADED WITH AS MUCH BODY MASS, MUSCLE, LENGTH, AND OVERALL STYLE AS YOU CAN STUFF IN AN ANGUS COW. THIS COMBINATION OF THE MERLE, OCC UANADA 927K, OCC DIXIE 814G, BLACKBIRD OF RR 1204, THE DAM OF OCC EUREKA, AND OCC GENESIS IS DYNAMIC! THE LIST IS LONG FOR ALL THE ACCOMPLISHMENTS HER GENETIC LINEAGE HAS BROUGHT TO THE POWER PLUS PROGRAM OVER THE LAST DECADE. FERTILITY AND POWER WITH EFFICIENCY BUILT IN KIND. 1955 WOULD BE ONE OF THE FIRST DUFF 4REAL DAUGHTERS IN PRODUCTION; BY THE LOOK OF HER EMBRYO CALVES, THERE IS NO DOUBT THAT THEY WILL RISE TO THE FOREFRONT AND BE HIGHLIGHTED AS MAJOR STANDOUTS. IF YOU WANT TO IMPACT YOUR PROGRAM'S FUTURE POSITIVELY, HERE IS YOUR OPPORTUNITY! 1955'S FIRST EMBRYO FLUSH BROUGHT 32,000 IN THE 2024 POWER PLUS FEMALE SALE, GOING TO ZWT RANCH.



BAR-E-L NATURAL LAW 52Y, SIRE OF LOT 30A



BROOKING CONTINENTAL 3105, SIRE OF LOT 30B

OFFERED BY:

PREMIUM BEEF GENETICS - 405.385.1238 - PERKINS, OK

DUFF DIXIE ERICA 466 1845

BLACK ANGUS REG.19490806 DB.02.09.2018 TATTOO.1845

CED	BW	WW	YW	DMI	CEM	MILK	RE	FAT	\$W	\$B
+13	-.1	+38	+70	+.15	+6	+24	+.44	+.003	+38	+84

DUFF E BLAST 8138

DUFF FULL HOUSE 225

DUFF PURE BEEF 217

DUFF DIXIE ERICA 149 466

O C C JUANADA 927K

DUFF NL 841M DIXIEERICA 149

THE BEST WAY TO DESCRIBE THIS DONOR, FEMALE Sired BY DUFF PURE BEEF IS LONG, STOUT-MADE, GREAT UDDERED, WITH A MASSIVE CENTER OF BODY AND STUFFED FULL OF MUSCLE AND ADDED FRAME! 1845 STEMS BACK TO OCC JUANADA 917K AND OCC DIXIE ERICA 841M, BOTH OF WHICH ARE SIGNIFICANT FACTORS FOR LONG-TERM SUCCESS. TRUE EFFICIENCY BUILT-IN-GENETICS THAT TURN GRASS INTO POUNDS, NOT TO MENTION THE EXTREME PHENOTYPE. 1845 HAS AN IMPRESSIVE HISTORY OF PRODUCING HIGH-END OFFSPRING THAT HAVE SOLD THROUGH THE POWER PLUS PROGRAM. SELLING EMBRYOS Sired BY PROVEN MATERNAL POWERHOUSES.

A 3 IVF EMBRYOS BY BAR-E-L NATURAL LAW 52Y BAR-E-L NATURAL LAW 52Y

BLACK ANGUS REG.19310190 DB.02.18.2011 TATTOO.52Y

CED	BW	WW	YW	DMI	CEM	MILK	RE	FAT	\$W	\$B
+1	+3.3	+55	+104	+.45	+7	+23	+.69	+.002	+35	+145

G A R GRID MAKER

BAR E L MCC 365 ICON 20H

S A V BISMARCK 5682

BAR-E-L MAGNOLIA 143K

S A V ABIGALE 0451

DOUBLE FOUR DUCHESS 126

B 3 IVF EMBRYOS BY BROOKING CONTINENTAL 3105 BROOKING CONTINENTAL 3105

BLACK ANGUS CAA.2309167 DB.01.19.2023 TATTOO.JSTN 105L

CED	BW	WW	YW	DMI	CW	MILK	RE	FAT	MW	CBI
-1.0	+4.2	+70	+126	+1.71	+54	+25	+.57	+.058	+91	+210

S A V RENOVATION 6822

S A V 004 DENSITY 4336

BROOKING EMERALD 9179

DUSTY'S COUNTLESS 22H

BROOKING BEAUTY 6051

BROOKING COUNTLESS 7077

TAG#	DB.	DUE DATE	AI SIRE	SIRE	DAM	SIRE	SIRE
69	12.13.2023	05.25.2026	EF PRESIDIO 9001 #16482381	BC ROBUST 0807 #18456252	ANGUS COW	COLEMAN KNIGHT 209 #17255860	OCC MISSING LINK 830M #14456399
106	12.18.2023	06.03.2026	OCC PIPER #	PORTER RAIDER #	ANGUS COW	BC ALPHA C1327 #18511676	OCC REAR END 751R #15649977
110	12.29.2023	06.04.2026	OCC PIPER #	BC BALANCE 516-7 #15751698	ANGUS COW	BC ROBUST 0807 #18456252	OCC MODERATOR 825M #14456398
111	12.05.2023	05.25.2026	EF PRESIDIO 9001 #16482381	BC BALANCE 516-7 #15751698	ANGUS COW	BC-4 ETERNITY 7018 #19426838	OCC REAR END 752R #15649977
112	12.09.2023	05.27.2026	OCC MAGNITUDE 805M #14456390	BC ALPHA C1327 #18511676	ANGUS COW	COLEMAN KNIGHT 209 #17255860	OCC MISSING LINK 830M #14456399
113	12.23.2023	05.27.2026	OCC MAGNITUDE 805M #14456390	BC BALANCE 516-7 #15751698	ANGUS COW	BC MATRIX 4132 #14159119	COLEMAN KNIGHT 209 #17255860
114	12.01.2023	06.04.026	OCC PIPER #	BC BALANCE 516-7 #15751698	ANGUS COW	BC ALPHA C1327 #18511676	OCC REAR END 751R #15649977
115	12.16.2023	05.25.2026	OCC MAGNITUDE 805M #14456390	BC ALPHA C1327 #18511676	ANGUS COW	COLEMAN KNIGHT 209 #17255860	OCC REAR END 751R #15649977

OFFERED BY:
LEE HOLTMEIER - 785.747.7007 - WASHINGTON, KS
VIDEOS AVAILABLE ON CCI.LIVE PRIOR TO SALE

THESE FEMALES HAVE BEEN COMPILED OVER YEARS OF AI BREEDING, HEAVILY INFLUENCED BY OHLDE CATTLE CO. GENETICS FOR GENERATIONS. THIS GROUP OF FEMALES IS ELITE IN THEIR TYPE, STYLE, DEPTH OF RIB, AND EXTREMELY EASY FLESHING, WITH EXTRA MUSCLE INFUSED. LEE HAS SOLD SELECT GROUPS, SISTERS, TO THESE FEMALES, AND THEY HAVE EXCELLED IN MANY DIFFERENT PROGRAMS. LIKE TO PRODUCE ELITE HALF-BLOOD SIMMENTAL, CLUB CALVES, OR KEEP BREEDING PURE ANGUS. IT IS SUPER HARD TO FIND QUALITY REPLACEMENT BRED HEIFERS THAT ARE THE FRONT PASTURE KIND! HERE'S YOUR OPPORTUNITY! HEIFERS AVAILABLE FOR VIEWING PRIOR TO SALE - 1155 OSAGE RD, WASHINGTON, KS 66968



EF PRESIDIO 9001, AI SIRE



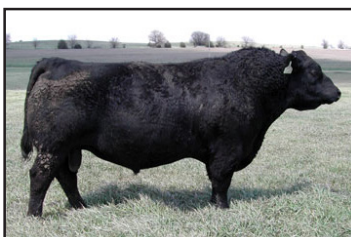
OCC MAGNITUDE 805M, AI SIRE



OCC HOMER 650H, FULL BROTHER TO OCC PIPER



BC ALPHA C1327



OCC MISSING LINK 830M



BC-4 ETERNITY 7018



COLEMAN KNIGHT 209



OCC REAR END 751R



BC ROBUST 0807



BC MATRIX 4132



DAUGHTERS OF CONLEY BRISTOW 2317



CONLEY SANDY 7662, DAM OF CONLEY BRISTOW 2317

OFFERED BY:

CONLEY CATTLE - 580.618.4533 - SULPHUR, OK

CONLEY BRISTOW 2317

ANGUS		REG.20491419			DB.06.03.2022			TATTOO.2317		
CED	BW	WW	YW	DMI	CEM	MILK	RE	FAT	\$W	\$B
+2	+3.0	+61	+99	+22	+8	+21	+97	+.017	+47	+152

GATEWAY FOLLOW ME F163

5T POWER CHIP 4790

CONLEY LEAD THE WAY 0738

CONLEY SANDY 7662

EXAR PRINCESS 1637

SILVEIRAS S SIS SANDY 2355

A
B

1 UNIT OF CONLEY BRISTOW 2317

1 UNIT OF CONLEY BRISTOW 2317

THE HOTTEST SON OF THE RECORD-SELLING CONLEY LEAD THE WAY 0738 IN EXISTENCE! CONLEY BRISTOW 2317 TOOK THE INDUSTRY BY STORM WHEN HE SOLD IN THE CONLEY CATTLE SPRING 2023 PRODUCTION SALE FOR \$150,000 TO A GROUP OF THE INDUSTRY'S MOST PROGRESSIVE ANGUS BREEDERS! HIS LOOK OF QUALITY AND STYLE IS SIMPLY UNPARALLELED! A SURE FIRE OPTION TO SIRE ELITE SHOW HEIFERS THAT COMMAND BIG PREMIUMS! SOME OF HIS FIRST DAUGHTERS HAVE BEEN FEATURED A LOT AT CONLEY CATTLE MARKETING EVENTS. THE LONE DAUGHTER TO SELL IN THE 2024 CONLEY CATTLE FALL PRODUCTION SALE SOLD FOR \$90,000. ANOTHER DAUGHTER COMMANDED \$190,000 IN THE 2025 CONLEY CATTLE SPRING PRODUCTION SALE. PEMBROOK CATTLE COMPANY ALSO HAD A HEIFER BY CONLEY BRISTOW 2317 HIGHLIGHT THEIR SPRING PRODUCTION SALE THIS PAST MARCH.

SULL SARAS DREAM 4723M COMMANDED A \$140,000 HAMMER PRICE AND WILL BE LED BY CAMBRIA COOK OF CALIFORNIA. THE 2025 CONLEY CATTLE FALL PRODUCTION SALE FEATURED 11 DIRECT DAUGHTERS OF CONLEY BRISTOW 2317 THAT DOMINATED THE EVENT. BIG THINGS TO COME... THIS IS YOUR CHANCE TO GET ON BOARD WHILE SUPPLIES LAST!