



ONE-AND-ONLY

simmental sale

SUNDAY. **JANUARY 18**. 2:00 PM MST
AT THE HISTORIC NATIONAL WESTERN COMPLEX



2026

NATIONAL
WESTERN 
Stock Show



SALE MANAGEMENT:



www.m3cattlemarketing.com
 Sale Videos, any updates
 and pick of herds/calf crops
 information will be available
 on this website as well as
 CCI.live

Matt Macfarlane | (916) 803-3113 (cell)
 E-mail: m3cattlemarketing@gmail.com
 Jake Pickering | (530) 415-5484 (cell)



AUCTIONEER:

Col. Jered Shipman | (806) 983-7226



Bid Live Online

www.CCI.live - Watch the Sale

(405) 400-9505 Text/Call - schedule@cci.live
 Find us on the App Store and Google Play
 Over 35 years in livestock marketing!

SALE STAFF:

Ty Groshans (970) 818-6016 - *Western Livestock Journal*
 Alan Sears (970) 396-7521 - *Western Ag Reporter*
 Kelly Schmidt (406) 599-2395 - Special Assignment
 Mitch Armitage (405) 641-9438 - Special Assignment

Buyers who are unable to attend the sale can contact the sale manager, auctioneers, or any member of the sale staff with questions.

SALE SPONSOR:

Colorado Simmental Association
 Susan Russell - Secretary
 24614 Road G, Sugar City, CO 81076-9514
 Phone: 719-469-0020
 Email: colosimmental@gmail.com

Paul Hill, President 417-849-6851
 Cody Pitt, Vice-President 970-778-9267
 Jane Delling-Baty, Director
 Leah Clark, Director
 Jolynn Midcap, Director
 Susan Russell, Director
 Duane Yearous, Director

SPECIAL GUESTS:

Dr. Jon DeClerck
 Executive Vice President - American Simmental Association
 309-582-4555 jdeclerck@simmgene.com

AMERICAN SIMMENTAL ASSOCIATION BOARD OF DIRECTORS:

Matt Aggen	Chris Ivie	Mark Smith
Greg Burden	Brandi Karisch	Ryan Thorson
Tim Clark	Quin LaFollette	Loren Trauernicht
Chad Cook	Maureen Mai	Scott Trennepohl
Victor Guerra	Troy Marple	Greg Walthall
Joe Hensgens	Doug Parke	



ONE. AND ONLY simmental sale

SUNDAY. JANUARY 18. 2:00 PM MST
AT THE HISTORIC NATIONAL WESTERN COMPLEX

2026 NATIONAL WESTERN STOCK SHOW SIMMENTAL SCHEDULE:

SATURDAY, JANUARY 17, 2026

Progress Through Performance (PTP) and Phenotype & Genotype (P&G) Bull Pen Shows
 - 9:00 AM - *Hutchison Western Stockyards Events Center*

SUNDAY, JANUARY 18, 2026

Female Pen Shows and Rancher's Best Pen Show
 - 9:00 AM - *Hutchison Western Stockyards Events Center*

One and Only Sale Preview
 - 1:00 PM - *Hutchison Western Stockyards Events Center*

Power Simmental Selection - Fundraising - One and Only Simmental Sale
 - 2:00 PM - *Wagner Equipment Auction Arena - Stockyards Events Center*

MONDAY, JANUARY 19, 2026

PTP Youth Shows - 2:00 PM - *CoBank Arena*

TUESDAY, JANUARY 20, 2026

PTP National Simmental Show - 9:00 AM - *CoBank Arena*

All times Mountain Standard Time.

NATIONAL WESTERN STOCK SHOW

Jennifer Boka
 Director of Livestock Operations
 970-270-4019
jboka@nationalwestern.com

BRAND AND HEALTH REGULATIONS:

Brand Inspector: Terry Florian
 (970) 373-9702
 Veterinarians: Mike & Lori Scott, North Denver
 Animal Clinic - Mike (303) 489-0680

TRUCKING:

Randy Lathrop (847) 910-4673
 Stacy Soper (515) 250-3080
 Trevor Curtiss (208) 573-1221

INSURANCE:

James F Bessler
 4812 McBreyer Pl., Fort Worth, TX 76244
 (817) 562-8980 office
 (817) 562-8981 fax (817) 762-2641 cell
 E-mail: jim@jamesbessler.com

Jame Secondino Krieger
 P.O. Box 145, Universal, IN 47884
 812.208.0956 Email: jame@kriegerfarms.com

SETTLEMENT & TERMS OF THE SALE:

Purchase prices are due immediately after the sale in the office upstairs unless other arrangements have been made with sale management. It is the responsibility of the buyer to handle shipping from the NWSS of the live cattle or embryos/semen from where they are stored.

SALE CATTLE VIEWING:

All of the live cattle selling will be available for viewing beginning Thursday, January 15, 2026 through completion of the sale and will be stalled next to the auction arena. A map is on page 2 of the Stockyard Event Center and the NWSS.

EMBRYO GUARANTEE TO THE BUYER:

Embryos are available for immediate shipping as soon as payment has been received to M3 Marketing. Terms of shipment are between the buyer and seller. The seller guarantees that each embryo package consists of Grade One eggs unless otherwise stated. Each package of 3 embryos is guaranteed at least 1 pregnancy when implanted by a certified technician. After the buyer has made payment for your purchase, the seller will be notified that your purchase has been paid in full. It is the complete responsibility of the buyer to call the seller and request shipping. M3 Marketing or Colorado Simmental Association is not responsible for any warranties, those are between the buyer and seller. The buyer is responsible for all shipping costs and/or insurance on embryos and semen.

ANNOUNCEMENTS:

Announcements made sale day and from the auction block during the sale take precedence over printed material in catalog or other printed material associated with the sale. Anyone attending this sale, attends at their own risk. M3 Marketing, The National Western Stock Show and the Colorado Simmental Association or any of their representatives will not be held responsible for any personal injury or loss that may occur while attending this sale.

welcome



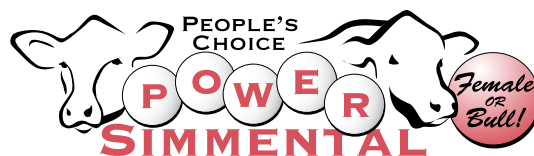
Matt Macfarlane
(916) 803-3113
m3cattlemarketing@gmail.com

Hello from M3 Marketing and welcome again to the 2026 One and Only Simmental Sale sponsored by the Colorado Simmental Association at the newly finished National Western Stock Show! It is an honor to help bring you the elite of the Simmental breed from across the country. I would like to thank the consignors from coast to coast for allowing us to showcase their programs at the Super Bowl of Cattle Events, The National Western Stock Show. This is truly a representation of the entire Simmental breed in this offering, and I encourage you to look closely through this catalog, from the first lot to the last lot, to see what can be incorporated into your program. The first couple years in this premier venue have been astounding. The Stockyards Event Center at the NWSS could not be classier, better designed or more user-friendly. You will not appreciate the detail that went into this facility until you see it for yourself. The National Western Stock Show is unveiling major new facilities this year, centered around the Sue Anschutz-Rodgers Livestock Center featuring a large livestock hall, CoBank Arena and an auction arena, for a better year-round experience. Other key additions include the Legacy Building for NWSS offices, clubs, and art, plus extensive new outdoor spaces and parking, all part of the massive National Western Center redevelopment project in Denver.

The staff at the NWSS should be commended as well, as the customer service has been taken to a whole new level catering to the needs of the exhibitors at a level not seen at a major stock show. Jennifer Boka and the rest of the staff have been extremely helpful to make sure this event is as good as it can be and it is greatly appreciated. I would like to thank the Colorado Simmental Association for the unparalleled support of this esteemed event, with so much rich history of breed-leading genetics, and continue the legacy. Their commitment and dedication to the breed as a state association is second to none. I would like to thank all of the consignors, breeders, bidders and buyers who had faith in this event. As of this catalog, the yard shows are at maximum capacity in multiple breeds again and the preliminary numbers shown to me for all species and all breeds was significantly higher than the previous three years and will be at maximum capacity. The enthusiasm and need for a successful event of this kind and magnitude has never been higher in the industry. The buzz and excitement are for real. It will solidify why the National Western Stock Show is the "Granddaddy of 'em ALL." Please do not hesitate to reach out. We look forward to seeing you in January.

Matt





2026 People's Choice Power Simmental

Participate in the 21st annual Power Simmental event at the 2026 National Western Stock Show.

A huge thank you to our 2026 Power Simmental sponsors:



You be the judge, and you may win a bull or heifer for just \$100. People's Choice judging will be January 17-18 during the SimGenetic pen shows, with the finale at the One and Only Simmental Sale. Details are on ColoradoSimmental.com.

The lucky winner will select "the best bull or female of the show" from the finalists, and receive that animal, while the breeder receives \$20,000.

1

Buy your People's Choice judging ballot cards.
Cash, Check & CC accepted

2

Sat. 1/17/26 & Sun. 1/18/26
Rank the nominated bulls and females.
Close inspection of animals will happen after the show in the ring.

3

Sunday - 1/18/2026
The winner will be selected during The One & Only Sale @ 2 pm in the NWSS yards auction arena.

4

Winner is selected at random!
The person selected will name the **POWER SIMMENTAL** animal of their choice - and they will get to take that animal home- **FULL POSSESSION**

The POWER SIMMENTAL breeder, receives \$20,000!

CCA "HEADING HOME" Exchange Building

The "Heading Home" oil painting by Jan Mapes was commissioned by Colorado Cattlemen's Assoc. No more than 100 prints will be made to help raise funds for CCA's return to the historic Livestock Exchange Building, located on the National Western Stock Show campus.

The Livestock Exchange Building was constructed in phases between 1898 and 1919. All three segments of the historic structure are being refurbished. CCA is now located on the third floor of the main east building. Feel free to visit CCA for a tour.

At CCA's annual convention in June, final prints will be auctioned. All buyers of prints will be entered in a reverse raffle held throughout convention. The final buyer to be drawn will receive the original painting and return their print to CCA for display in the new office, with the list of donors.



NEW AI TANK WITH SEMEN

XC 20 Signature 20 Semen Tank – Altenburg Super Baldy Ranch, Fort Collins, CO.

Semen includes:

- TJ Klondike 549K (4065070) – 10 straws. Donated by ABS Global, Inc., WI.
- KBHR Gratitude (4387171) – 10 straws. Donated by ST Genetics, TX.
- SRF Pivot 402M (4351219) – 10 straws. Donated by Genex Cooperative, WI.
- WHF Point Proven H45 (3780742) – 10 straws. Donated by Select Sires, Inc., OH.
- Brown RRR Emblem J3541 (3886910) – 10 Straws. Donated by Reflected R Ranch, CO and Select Sires, Inc., OH.
- TL On The Run 106K (4325400) – 2 Straws Conventional Straws. Donated by Griswold Cattle, OK.
- WHF/JS/CCS Woodford J001 (4068398) 2023 NAILE Grand Champion % Bull – 2 Conventional Straws. Donated by JS Simmental, IA.
- BTYL Doc Holliday 202G (3565419) 2020 NWSS Grand Champion PB Bull – 2 Sexed Female Straws. Donated by Baty Livestock, CO.
- MR HOC Broker (2531081) – 2 Straws Conventional Straws. Donated by Baty Livestock, CO.



TJ Klondike 549K



KBHR Gratitude



SRF Pivot 402M



WHF/JS/CCS Woodford J001



WHF Point Proven H45



TL On The Run 106K



BTYL Doc Holliday 202G



MR HOC Broker



Brown RRR Emblem J3541

American Simmental - Simbrah Foundation

We would like to thank the breeders listed for donating the items below for the benefit of the Simmental youth and the American Simmental - Simbrah Foundation!

- A Marlin 70478 1895 Big Loop Full Size is generously donated by Circle M Farms, Rockwell, Texas.
- The liquor is graciously donated by Eberspacher Enterprises, Marshall, MN and Eichacker Simmentals, Salem, SD

Beginning 15 minutes before the sale, 10 bottles of liquor and etched drink glasses will be auctioned off with a drawing at the end of the sale for the gun.

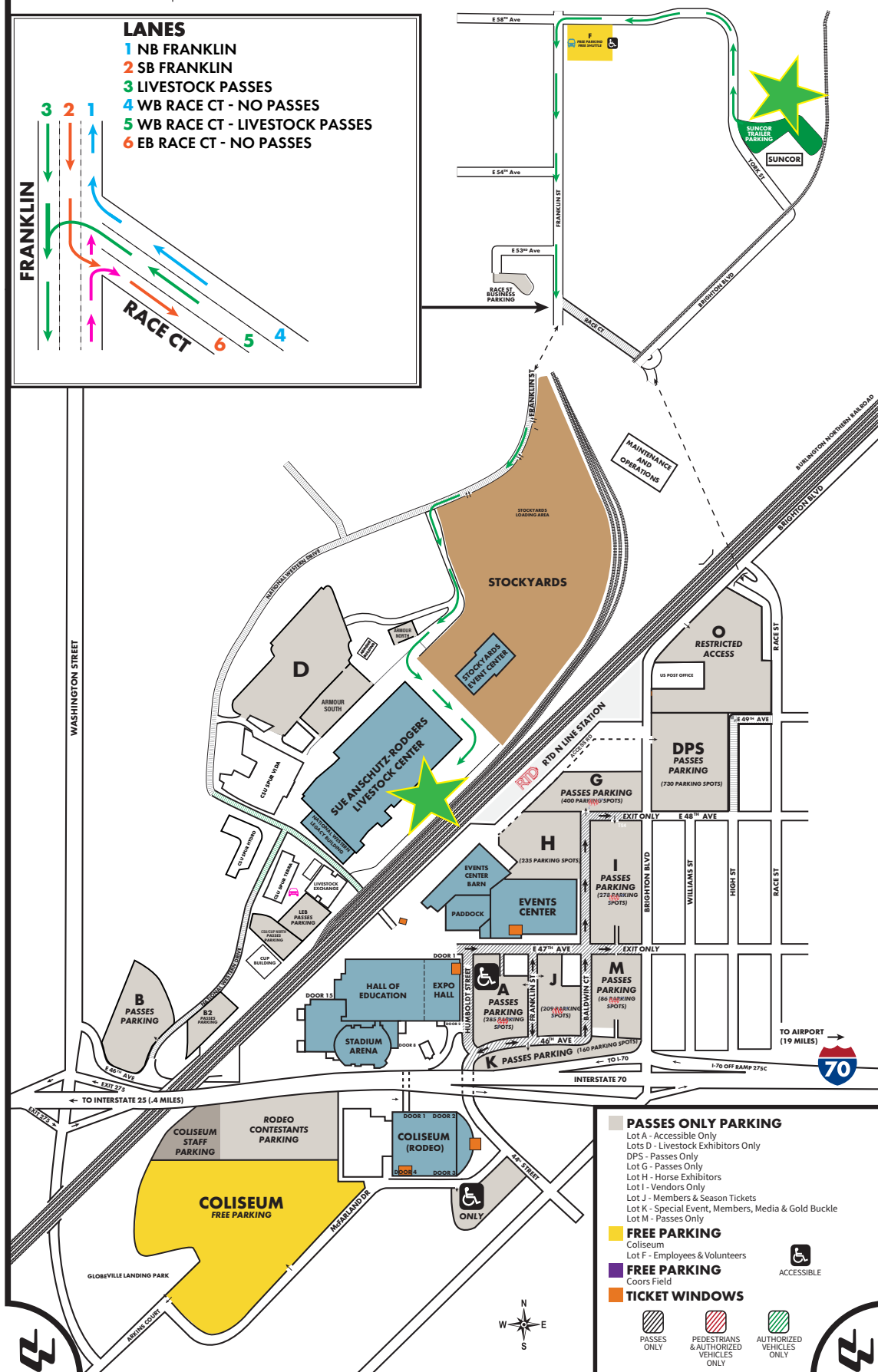
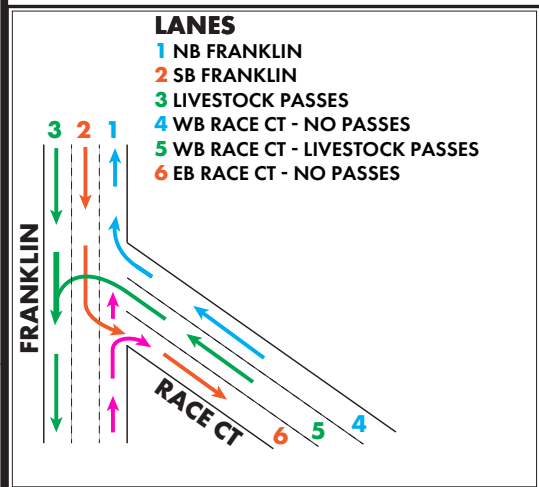


AMERICAN SIMMENTAL-SIMBRAH
FOUNDATION



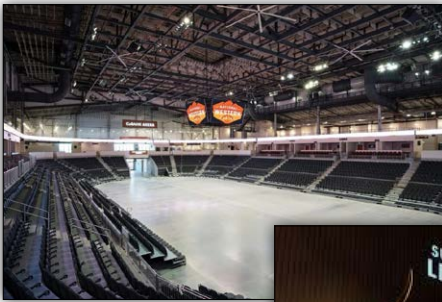
Eberspacher
ENTERPRISES INC.





new facilities, same traditions

The National Western Stock Show (NWSS) is unveiling major new facilities this year, centered around the Sue Anschutz-Rodgers Livestock Center, for the 2026 event, featuring a large livestock hall, CoBank Arena, and auction arena, replacing older barns for a better year-round experience. Other key additions include the Legacy Building for NWSS offices, clubs, and art, plus extensive new outdoor spaces and parking, all part of the massive National Western Center redevelopment project in Denver.





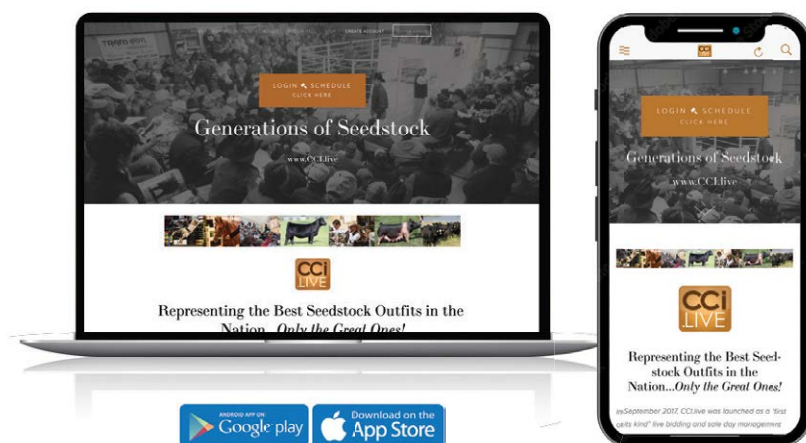
Watch the Sale on CCI.live!

*The best, the fastest and most
comprehensive marketing & bidding tool!*

How to Bid Online...

- **As a buyer**, you do not need an account or to login to watch the sale but you must have a validated account to bid.
 - After you are logged in, you must proceed to the sale page for any and every auction and click **"Get Buyer Number."** Some auctions require a pass-code to obtain a buyer number even after you are approved by CCI.live. Pass codes generally come from the sale manager or ranch for that particular sale.
 - CCI.live will operate with ease on a **cellular device, laptop, desktop or tablet.**
- A **modern or current browser** is important and will make your experience better. You do not need to install the app on cellular devices to watch a sale. CCI.live is a browser-based application meaning it will play on most new browsers, but you can also download the CCI.live app at the Apple App Store or through Google Play.
- **For successful bidding you must have good Internet service!** It is very important to be stationary. If you are driving and bidding, expect to have some service issues. If you are stationary on a good device, with healthy Internet, expect a very successful bidding environment. If you have slow Internet watch the "asking price" on the screen - it is real time and refresh your browser if you feel like you have some lag.
- **Support line open during all sales. 405-400-9505** - Please contact the ranches for invoices and trucking.

Viewed around the world!



**SALE CATALOG, VIDEOS,
and LIVE BROADCAST...**

all at your fingertips from the sale page at
www.CCI.live! Watch live sales weekly!



www.CCI.live

(405) 400-9505 Text or Call
schedule@cci.live

Over 35 years in livestock marketing!

W HUTCHISON FAMILY YARDS EVENT CENTER

IN THE YARDS

singenetics **SCHEDULE**

SATURDAY, JANUARY 17, 2026

Progress Through Performance (PTP) and Phenotype & Genotype (P&G) Bull Pen Shows

- 9:00 AM - Hutchison Western Stockyards Events Center

SUNDAY, JANUARY 18, 2026

Female Pen Shows and Rancher's Best Pen Show

- 9:00 AM - Hutchison Western Stockyards Events Center

One and Only Sale Preview

- 1:00 PM - Hutchison Western Stockyards Events Center

Power Simmental Selection - Fundraising - One and Only Simmental Sale

- 2:00 PM - Wagner Equipment Auction Arena - Stockyards Events Center

MONDAY, JANUARY 19, 2026

PTP Youth Shows - 2:00 PM - CoBank Arena

TUESDAY, JANUARY 20, 2026

PTP National Simmental Show - 9:00 AM - CoBank Arena

All times Mountain Standard Time.

2026

NATIONAL
WESTERN 
Stock Show

Sandeen Genetics Pick



SANDEEN DONNA 1316 (ASA# 3963159) - \$130,000 high selling open female in '21 Buildin' a Brand sale. Has since produced right at \$300,000 worth of progeny and embryo sales in her initial 12 months of marketing production. Top selling progeny include: \$60,000 FSCI Donna L332- high selling bred female- Fergusons '25 Rare Vintage sale; \$54,000 FSCI Remedy L374- high selling Bull- Ferguson '25 Rare Vintage sale; \$52,500 Sandeen Timoteo 4462- high selling bull- Sandeen '24 Buildin' a Brand sale.



GCC MISS BROKER D198 (ASA#3289975) - Incredibly productive Foundation cow in the program that just simply doesn't miss. Progeny have averaged \$36,000 with top sellers including: \$100,000 Sandeen High Profile 9174- high selling bull '20 Buildin' a Brand sale; \$92,000 Sandeen Lady G 0344- sale feature '21 Buildin' a Brand sale; \$88,000 Sandeen Lady G 3250- sale feature '24 Buildin a Brand sale; \$43,000 Sandeen Lady G 3069 - sale feature '23 Buildin' a Brand sale.



SANDEEN DONNA 4183 (ASA# 4436259) - \$48,000 high selling percentage female '24 Buildin' a Brand sale. Phenotypically Phenomenal halfblooded foundation female. Backed by a dam that holds the very best of the Coleman Donna cows in her pedigree. This one will be impactful, moving forward.



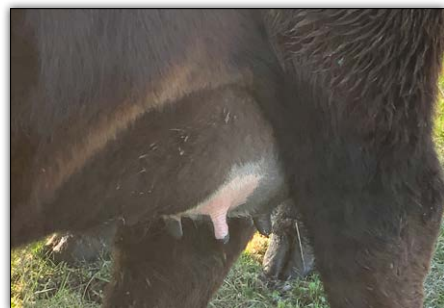
SANDEEN LOADED LADY 2618 (ASA# 4269520) - \$125,000 sale feature '23 Buildin' a Brand sale. Full sister was a \$200,000 sale feature the previous year. Derived from a line of cows developed here with the fundamentals in mind. They excel in foot quality, fertility, stout of skeleton, structural integrity and additional real world performance with a high degree of fleshing ability.

Sandeen Genetics

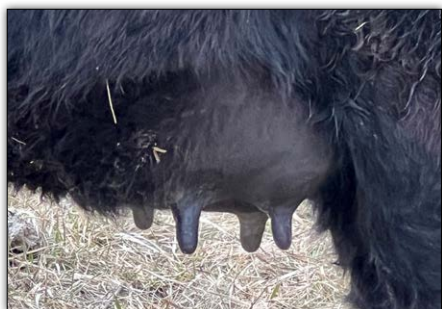
lot
A

PICK OF THE HERD

- What an opportunity from one of the storied and most successful Simmental programs in the U.S. You can chose any cow in the program to flush/aspirate to the bull of your choice. Scott Sandeen's Buildin' a Brand Sale has consistently returned one of the high averages in the industry year after year due to the depth of quality he and his family have created in one of the elite cowherds in the U.S. centered around the "Donnas". Cow families are extremely important to him and over the years they narrowed it down to just a handful of that have consistently produced those particular traits they deem non-negotiable in their breeding program and have continued to do it generation after generation.
- At the 2025 Sale people gathered from across the country to appraise 65 Lots and gross \$1,160,750 And average \$17,858. You too can reap the rewards of this fabulous set of donors and create your own opportunity to advance your program to the next level. Buyer will receive a minimum of 6 embryos and no cap with a guarantee of 3 pregnancies. Semen, flush cost, storage and shipping are the buyer's responsibility.
- Sandeen Genetics, Blakesburg, IA, Scott Sandeen (641) 777-9153



SANDEEN DONNA 8302 (ASA# 3564034) - \$2.5 million in lifetime earnings, including: \$215,000 Sandeen Donna 5856 - top seller '25 Buildin' a Brand sale; \$210,000 Sandeen Donna 1031- top seller '23 Buildin a Brand sale; \$200,000 Sandeen Donna 1142- top seller '22 Buildin' a Brand sale; \$185,000 Sandeen Donna 4106- top seller '24 Buildin' a Brand sale; \$140,000 Sandeen Donna 0747- top seller '21 Buildin' a Brand; \$95,000 Black Gold/Lindgren Donna 275M - top seller '25 Evolution sale in Canada.



SANDEEN DONNA 1142 (ASA# 3963161) - \$200,000 top seller '23 Buildin' a Brand sale. Phenotypically stunning mature female with the most brilliant udder of any cow in the herd.



SANDEEN DONNA 4106 (ASA# 4431573) - \$185,000 top seller '24 Buildin' a Brand sale. Definitely one of the very best daughters ever produced from Sandeen Donna 8302.



SANDEEN DONNA 1249 (ASA# 4152561) - \$80,000 sale feature '22 Buildin' a Brand sale. Full sib to Sandeen Donna 1316. Will be one of the most dominant producers amongst our donor arsenal in the coming years.

Werning Cattle Co. Pick

CALVES FROM LAST FALL'S CALF CROP



W/C

lot
B

PICK OF THE FALL CALVES

- The Werning family has been known for decades for being one of the most progressive and practical purebred programs in the country that produces high quality seedstock that excel throughout the industry. There are not many AI studs in America that do not have multiple bulls in their lineups with the W/C prefix in black type. The Werning bull and female sale continually produces one of the top averages in the country in both sexes and there are very few programs in the country that have continually produced donor cows and herd bulls so deep in their offering year after year after year. But the meat and potatoes of the operation is the commercial application of their genetics that drive their breeding decisions. Feeder cattle and replacement females that are sired by bulls with W/C prefix are continually bringing substantial premiums over the market.
- The main donor dams that are available are pictured.
- You are getting the chance to pick through 65 embryo transplant calves of either sex and/or breed, and all of the calves produced are on the table. This is the entire fall calf crop and are all products of their ET program. If the buyer selects a heifer, W/C retains six (6) Grade 1 Embryos. Retaining 1/3 Semen interest if a bull is selected. You can make selection anytime after DNA is processed. Complete details will be available sale day.
- Werning Cattle Co., Emery, SD, Scott Werning (605) 682-9610, Dale Werning (605) 661-3625

DONOR DAMS OF CALF CROP



WC MISS SEQUOIA 1003J



WC MISS WERNING 107J



WC MISS WERNING 161J



SAV BLACKCAP MAY 4136D



WC ANGEL 7143E



WC MISS OKIE BROKER 1107J



BRAMLETS DAKOTA H094



LAZY H ROSIE F89



SAV BLACKCAP MAY 6644



WEBR RAZZLE 892



WC ROSITA 1078J



WC MISS WERNING 9026G

• Simmental Sires

Represented:

W/C Truth Be Told 6038L
W/C Bankroll 811D
W/C Relentless 32C
W/C Bet On Red 481H
RP Eminence H005

RJ Trust Fund 212K
RFS Heavy Hitter H45
OMF Journeyman J24
Rubys Turnpike 771E
TL On The Run 106K

• Angus Sires Represented:

Spring Cove Grant 200K
Coleman Glacier 041

• Red Angus Sire

Represented:
Powerglide 2109

• The demand for the W/C Brand Has Never Been Stronger!

2025 W/C Sale Results:

153 Simmental bulls...\$12,160
3 Simmental donor cows...\$29,667
82 Simmental bred heifers...\$12,332
69 Simmental embryos...\$1,128
229 Simmental semen lots...\$250

Roller Ranch Pick



FRKG VICTORY 78J



OMF JOURNEYMAN J24



NEXT LEVEL



CKCC MS PEARL 2732K



BRIDLE BIT RECHARGE



CKCC MR EPIC



KCC1 COUNTERTIME 872H



B C R TIME TO SHINE 509K



KCC1 COUNTERSTRIKE 2700J

lot
C

PICK OF THE 2025 CALF CROP

- Roller Ranch is offering the opportunity to select one female from the entire 2025 calf crop.
- We are certain that there is a female in this group for nearly all breeders of all disciplines. There would be 59 head to select from and will feature the influence of several of the breed's hottest AI sires, along with our herd bull battery that we have invested heavily in over the past three years. Daughters of Bridle Bit Recharge K256, FRKG Victory 78J, KCC1 Countertime 872H, MR CCF 20-20, Next Level, OMF Journeyman J24, FRKG CKCC Platinum 009H ET, Sitz Resilient 10208, Ignition, HOLT Night Vision 457H and STCC Tecumseh 058J would represent the AI and embryo transfer division within the population. We are very impressed by the females sired by our natural service battery and look forward to what the daughters of CKCC Backcountry 1623J and KCC1 Counterstrike 2700K are capable of contributing in the future. CKCC Backcountry 1623J is a direct son of OMF Epic E27 and a Profit bred dam that we selected from the CK and Wager programs. He is responsible for siring some of the highlight herd sire prospects marketed through the 2024 and 2025 CK and Wager Production Sale. KCC1 Counterstrike 2700J is a son of the \$230,000 KCC1 Countertime 872H from the maternal sister to KR Casino 6243, KCC1 Gwen 9073G. Maternal sibs to "Counterstrike" have been sale features in the Kearns Cattle Company annual bull sale. The amount of sheer substance and beef business power that each of the two herd sires contribute is as good or better than the AI sired contemporaries. Whoever has the winning bid will get to witness the quality of this set of females and realize that fact upon selection.
- Not only is this opportunity rich in sires, but some of the young donor dams that are a part of our program moving forward are also featured in this set of stock. CKCC Ms Jeanie 1749J is a past sale highlight and our \$16,000 selection from the 2021 version of the South Dakota Source Sale. We love the depth and hip this daughter of ES Right Time FA110-4 from the TR Mr Hammer 308A sired sister to the legendary J6RA Bada Bing 1602B has to offer to the future of our program. CKCC MS Pearl 2732K is the \$33,000 Profit sired selection from the CK Cattle program that would offer the influence of the Thomas Ranch bred "Katinka Kay" Angus cow family and the service of the now deceased female maker, WINC Surelock 634D. Indeed, this is a potent genetic blend, featuring a documented history of numerous high sellers and national champions. This set of cattle also includes daughters of our rising stars from the Buck Creek Ranch program, the \$60,000 donor B C R Time To Shine 509K and \$52,000 B C R Time To Shine J234. The "Time To Shine" influence is stamped and trademarked with future and breeding flexibility. Let's not forget to mention that maternal sisters to the great and proven, OMF Epic E27, are in this elite set of open females too. We consider our working cow herd to be doing their job outside of our donor pen. There will be females surface as our operation matures in number and quality, and we can identify those producers of significant quality moving forward.
- With our operation being youthful in its development and our future plans to remain in the business for the next generation to assume the reins, we feel that sacrificing one of our best from this set of females is the best marketing decision we can make for our program moving forward. The pick needs to be made by March 1, 2026, and Roller Ranch will retain the right to one successful IVF aspiration or 1 conventional flush cycle on the female selected to be performed within the first two years of the female's productive phase at Roller Ranch's expense and the buyer's convenience.
- For a complete inventory of registration numbers or additional details, please reach out to us.
- Roller Ranch, Hewitt, MN, Brent Roller (218) 849-7414 or Jenny Roller (320) 491-7284





ASF BABY'S KISS B19



B A R JILT 1744



FIVE STAR JANA E J9



KLER BARBIES STAR 972G



KLER GANA LORETTA L010



KLER JANA E SECRET 3158



KLER QUEEN 017H



KLER YFC DREAM GIRL 3094



KLERDFS1 AUTUMN BREEZE



lot
D

PICK OF THE HERD TO FLUSH

The donor lineup speaks for itself:

- Five Star Janae J9 continues to separate herself, producing a \$40,000 half-interest bred female along with bulls at \$20,000, \$15,500, and \$8,500 last year. Her calf crop in this year's sale is nothing short of impressive.
- KLER Barbies Star 972G has firmly established herself as an elite producer, serving as the dam of our \$30,000 high-selling bull KLER YFC Guardrail, purchased by Stavick Simmentals (SD). In addition, she raised a \$25,000 half-interest bred female and followed up this fall by producing a \$19,500 Coping With Destiny daughter—proving her consistency across multiple mating decisions.
- KLER Queen 017H, the dam of KLER Maximus, is an emerging outcross pedigree cow that never misses, boasting one of the best udder designs we have ever raised.
- KLER DFS1 Autumn Breeze, the \$30,000 selection by DR King, is an absolute powerhouse—combining extreme growth with an elite look.
- KLER Janae Secret, the \$40,000 high-selling half-interest bred from last year, blends a phenomenal EPD profile with eye appeal and consistency.
- ASF Baby Kiss, the old-school, broker-style KLER Sweetness daughter, offers massive feet, exceptional structure, and raised our \$29,000 high-selling open female this year.
- KLER Gana Loretta is an up-and-coming powerhouse sired by the timeless Rebel and out of Red Jewel. Predictable, proven, and loaded with upside—this female offers the kind of foundation genetics that consistently deliver.
- B A R Jilt 1744, a purebred Angus female with a stunning look and out-of-this-world numbers, produced two purebred heifers that sold at the NWSS for \$17,000 and \$12,500. Her half-blood calves continue to impress.

- We are excited to offer pick of the KLER Cattle cow herd for a flush opportunity—a rare chance to tap into our entire donor battery and select the female that best fits your vision. Whether your goal is building the next cornerstone breeding piece for your operation or creating a high-end show heifer for the kids, this opportunity puts the power in your hands.
- For years, we have focused on breeding and raising elite, problem-free cattle from the ground up—designed to work across a wide variety of operations. Every donor available in this offering is proven, time-tested, and backed by the most consistent cow families we have ever produced. In addition, buyers will have access to select replacement females, as there are future stars rising through that group as well.
- This opportunity allows you to pair your bull of choice with the genetics that best complement your program—giving you a true shot at creating something special and taking your operation to the next level. We could go on—but catalog space is limited.
- Guaranteed minimum of six Grade 1 embryos semen, shipping and flush costs are the buyer's responsibility! Open top on flush.
- Opportunity knocks. Don't miss your chance to build the next great one.
- K-LER Cattle, Seth Kaehler (507) 272-5403

Donor Cow from Bridle Bit



BRIDLE BIT MISS J176 - Lot 1

lot
1

BRIDLE BIT MISS J176

BD: 2/10/2021 | 3/4 SM 1/4 AN Cow 3891152 | Tattoo: J176

BRIDLE BIT ECLIPSE E744

Homo Black

HOOK'S GALILEO 210G

Homo Polled

3563620

HOOK'S EVITA 18E



HTP SVF IN DEW TIME

BRIDLE BIT MISS Y119

2579791

BRIDLE BIT MISS W967

CE	BW	WW	YW	ADG	MCE	MILK	MWW	STAY
16.1	-0.6	89.0	131.4	0.26	10.5	33.1	77.5	17.5
DOC	CW	YG	MARB	BF	REA	SHR	\$API	\$TI
18.0	41.6	-0.21	0.72	-0.052	0.67	-0.38	167.5	99.2

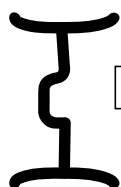
- The best way we can describe Bridle Bit Miss J176 is one of the most attractive Galileo cows we have ever laid eyes on and a cow that will add tremendous genetic value to any operation. J176 has been special ever since she arrived, being the last calf born out of our late Y119 donor. In her first couple of years of production, J176 has raised two elite heifer calves which both sold in our annual All Terrain Bull Sale in 2024 and 2025 totaling \$39,500. Multiple bull calves and heifers will be offered in our 2026 All Terrain Bull Sale. One of the best young cows in our donor pen, J176 has yielded 19 embryo's in two conventional flushes, breeding back AI both times, and never being turned with a bull. She sells bred with a Bridle Bit Recharge sired calf in utero, a full sibling to the \$30,000 open heifer sold in our 2025 bull sale on 5/29/2025. We believe J176 is one of the most complete young baldy donor cows in the breed who speaks for herself!
- Selling 1/2 interest including all natural born calves with the option to double the winning bid for full ownership. If full ownership is selected seller reserves this right to one conventional flush yielding a minimum of nine freezable embryos within two years.
- Bridle Bit Simmentals, Walsh, CO, Chad Cook (719) 529-0564



BRIDLE BIT RECHARGE K256 - Service sire of Lot 1.



BRIDLE BIT 4108 - \$30,000 daughter of Lot 1.



BRIDLE BIT *Simmentals*

Donor Cow from Werning Cattle Co.

W/C RJ TEXAS DOLL 7058E - Lot 2.



THESE DAUGHTERS OF 7058E WERE FEATURED IN THE FALL ONLINE SALE



THESE DAUGHTERS OF 7058E SELL IN THE 2026 WERNING SALE

W/C



lot
2

W/C RJ TEXAS DOLL 7058E

BD: 4/12/2017 | PB SM Cow 3324768 | Tattoo: 7058E

W/C LOADED UP 1119Y
2654155

AUBREYS BLACK BLAZE III



WAGR DREAM CATCHER 03R

MISS WERNING KP 8543U

2446017 MISS WERNING 534R

CE	BW	WW	YW	ADG	MCE	MILK	MWW	STAY
15.4	-0.4	68.2	92.6	0.15	7.1	21.2	55.2	13.5
DOC	CW	YG	MARB	BF	REA	SHR	\$API	\$TI
12.0	21.5	-0.54	0.07	-0.076	1.26	-0.22	127.7	74.8

W/C RJ Texas Doll 7058E is a full sister to one of the major impact sires to come out of the Werning program, W/C Bankroll 811D. Her production record and earning power speaks for itself as she has sold 20 Progeny have sold for over a \$13,000 average to gross over \$260,000 and she is just now entering her prime. Her most famous son to date, W/C NEXT STEP 3587L. The 2024 AJSA Classic Reserve Champion Bred & Owned Purebred Simmental Bull for Creighton Werning who was a feature of the 2025 W/C sale to Jason Otis, Emigrant, MT. Her Daughters by Next Level and Rose MC Encore will highlight the 2026 W/C Bred Heifer Offering and are pictured on these pages. This is literally a "Cash Cow" ready to earn for her new home, just add the bulls of your liking at flush time and reap the benefits. She is averaging 13 transferable embryos on 14 IVF Aspirations.

Werning Cattle Co., Emery, SD, Scott Werning (605) 682-9610, Dale Werning (605) 661-3625
Parsons Livestock, Leavenworth, KS, Garrett Parsons (832) 651-3634

SONS OF 7058E



W/C JOURNEYMAN 78M



W/C NEXT STEP 8587L



OMF KRISTY K88 - Lot 3 donor.

lot
3

OMF KRISTY K88 FLUSH

BD: 4/3/2022 | PB SM Cow 4100822 | Tattoo: K88

WELSHS DEW IT RIGHT067T

Homo Black

ES RIGHT TIME FA110-4

Homo Polled

3481590

ES A110



OMF COMMANDER Y69

OMF TIME LESS B100

2896460

OMF TIMELESS Z21

CE	BW	WW	YW	ADG	MCE	MILK	MWW	STAY
12.7	0.0	79.7	118.1	0.24	5.8	23.9	63.6	16.6
DOC	CW	YG	MARB	BF	REA	SHR	\$API	\$TI
14.4	32.8	-0.33	0.25	-0.076	0.72		144.5	85.1

- What an opportunity to get a flush to the bull of the buyer's choice as well as already made embryos on the \$128,000 K88, the newest and most profitable, prolific and productive donor at the G-. John has always been on the cutting edge and this is a perfect example. OMF Kristy K88 is one of his favorite young Simmental donors. They partnered with their good friend Keith Lambright to purchase her as the high-selling heifer in the 2024 OMF sale. She is a maternal sister to OMF Epic E27, a breed leading AI stud form ST Genetics and a leader in breed registrations, and the \$300,000 OMF Doc Lynn L92, plus a 3/4 sister to the \$70,000 OMF Ludacris L17. There is no denying the sheer power, shape, and dimension that this elite cow family brings to the equation. She produced the Reserve Champion Female at the 2025 MN Beef Fall Classic for Eliza Aggen in her first set of calves. There is a guarantee of a minimum of 6 embryos with an open top and minimum of 3 pregnancies when implanted by a certified technician. Flush, semen and shipping costs at the buyer's responsibility.
- Griswold Cattle Co., Stillwater, OK, (405) 372-3300 office





TL ON THE RUN 106K - Sire of the Lot 3A embryos.



GCC NIGHT OWL 3140L - Sire of the Lot 3B embryos.



OMF TIME LESS B100 - Dam of the Lot 3 donor.



OMF LUDACRIS L17 - 3/4 brother to the Lot 3 donor.



OMF EPIC E27 - Popular maternal brother to the Lot 3 donor.



OMF DOC LYNN L92 - Maternal brother to the Lot 3 donor.



lot
3A

3 IVF EMBRYOS

SECOND CHANCE 601H
TL ON THE RUN 106K
4325400 EC COUNTESS 283F

ES RIGHT TIME FA110-4
OMF KRISTY K88
4100822 OMF TIME LESS B100

CE	BW	WW	YW	ADG	MCE	MILK	MWW	STAY
13.4	-0.5	70.9	101.1	0.19	5.8	22.1	57.4	13.8
DOC	CW	YG	MARB	BF	REA	SHR	\$API	\$TI
12.3	23.9	-0.37	0.18	-0.070	0.77		131.3	77.1

• These are sired by maybe the most popular bull on display at the 2025 NWSS, TL On The Run 106K.

lot
3B

3 IVF EMBRYOS

ROCKING P PRIVATE STOCK H010
GCC NIGHT OWL 3104L
4284092 BAR CK MS D948 9024G

ES RIGHT TIME FA110-4
OMF KRISTY K88
4100822 OMF TIME LESS B100

CE	BW	WW	YW	ADG	MCE	MILK	MWW	STAY
14.5	-1.0	76.3	115.1	0.24	6.8	19.9	57.9	16.9
DOC	CW	YG	MARB	BF	REA	SHR	\$API	\$TI
12.3	35.1	-0.31	0.40	-0.060	0.83		153.0	85.8

• These are sired by the many time champion and extremely well-numbered, GCC Night Owl 3140L, a unicorn in the business who excels in unparalleled phenotype and numeric power.



THE DAM OF
GCC NIGHT OWL
43104L

BAR CK MS D948 9024G - Flush sells as Lot 4.

lot
4

BAR CK MS D948 9024G FLUSH

BD: 9/4/2019 | 3/4 SM 1/4 AN Cow 3766748 | Tattoo: 9024G

IR IMPERIAL B772
IR IMPERIAL D948
3210738 IR MS DUAL FOCUS W086

Red
Polled



BAR CK TEBOW 1006X
BAR CK MS 1006X 6266D
3235535 BAR CK MS 759 A906X

CE	BW	WW	YW	ADG	MCE	MILK	MWW	STAY
19.3	-4.4	64.4	106.7	0.26	8.9	20.0	52.1	18.1
DOC	CW	YG	MARB	BF	REA	SHR	\$API	\$TI
11.8	30.5	-0.24	0.84	-0.011	0.95	-0.45	179.1	92.0

- 9024G is just hitting her stride in terms of production. Her most notable son, the \$340,000 valued GCC Night Owl 43104L, is getting heavy use for how rugged he is with bone & substance, power and design. Night Owl is not only high-quality phenotype, but numbers up well to with a CED of 17, BW of -2.5 (actual BW is 61) and an API of 167. He's also got a MARB that is in the top 10% of the breed. His scan data showed a whopping 19 inch REA and 6.63 % IMF. He also impressed on the tan bark he has been named Reserve Champion Purebred bull at the 2024 American Royal and Champion Purebred Bull at the 2025 NWSS in Denver. 9024G is a beautiful cherry red three-quarter blood Simmental female that is sired by the breed leading IR Imperial D948 and backed by the ever-popular Bar CK Tebow 1006X. 9024G is a female that you are simply drawn to because of her stunning phenotype, added body dimension, flawless skeletal build, and unprecedented balance. 9024G continues to impress on paper as she ranks among the elite 1% of the breed for CE, MCE, and API, top 2% for BW and Marb, and top 4% for TI. The maternal granddam of 9024G is Bar CK Ms 759 A906X, was selected by Hartman Cattle Company of Tecumseh, Nebraska privately for \$10,000 as the lone half-blood female they acquired from Bar CK Cattle Company in 2017.
- There is a guarantee of a minimum of 6 embryos with an open top and minimum of 3 pregnancies when implanted by a certified technician. Flush, semen and shipping costs are the buyer's responsibility.
- Griswold Cattle Co., Stillwater, OK, (405) 372-3300 office



GCC NIGHT OWL 43104L - Son of Lot 4 donor.



FSCI DONNA L332



FSCI LYNCHBURG L374 - The \$54,000 flush brother to the Lot 5 donor. Semen available through ST Genetics.

• This was the first flush on the \$130,000 Sandeen Donna 1316 pick from the Building a Brand sale, and to say it was exceptional only diminishes the results. If you follow our social media closely, you'll will have undoubtedly gotten to know FCSI Donna L332 or as we call her "Rocket". A true powerhouse female, Rocket exemplifies the kind of dimension and skeletal quality that we imagined when first laying eyes upon 1316 in '21. We picked her out of the pasture to show some and slating her 12 o'clock to be a heavy bred at Louisville. A true "no holes" female, 332 comes with the kind of volume and mass that consistently transmits real world value and does so without giving up any circumference of foot and bone, comfort at the ground, or elegance to her head and neck set. One we chose to show Rocket, I told the kids we would never sell this one. I have been unpopular for a while now. When the smoke cleared Brad Wiseman owned half for a \$60,000 valuation. Rocket went on to be declared Reserve Champion Fall Division in Louisville. A full sib bull Lynchburg brought \$54,000 selling to Andy Mast and picked up by ST Genetics semen will be a hot commodity. The flush of Remedy by 1316 averaged \$23,950 I would call that consistency Buy in early. Rocket calved 11/26/25. Flush date approximately end of January. Guarantee 6 embryos with a cap of 10 split after that with qualified semen.

• Ferguson Cattle Co., Jefferson, OH, John Ferguson (440) 478-0782, Lindsey Rowland (440) 478-0503



lot
5

FSCI DONNA L332 FLUSH

BD: 9/20/2023 | PB SM Cow 4361615 | Tattoo: L332

HPF/HILL UPRISING C104

Homo Black

SO REMEDY 7F

3419044

B&K CREAM SODA 8D

Homo Polled



W/C RELENTLESS 32C

SANDEEN DONNA 1316

3963159

SANDEEN DONNA 8405

CE	BW	WW	YW	ADG	MCE	MILK	MWW	STAY
4.1	4.0	81.1	123.0	0.26	2.7	21.3	61.7	10.8
DOC	CW	YG	MARB	BF	REA	SHR	\$API	\$TI
7.7	47.9	-0.48	-0.38	-0.107	1.16	-0.27	82.1	64.5

Looking Like Something Genetics



SS/PZC LOOKIN LIKE SOMETHING - Dam of Lots 6, 7A, 7B.



NEXT LEVEL - Sire of Lot 6 heifer pregnancy.



REVELATION 2K - Sire of Lot 7A embryos.



UDE NEW HEIGHTS 62/87 - Sire of Lot 7B embryos.

lot 6

HEIFER PREGNANCY

Due January 15, 2026

NEXT LEVEL
3981484

KRJ DAKOTA OUTLAW G974

KRDL CAEDENCE C37

JSUL SOMETHING ABOUT MARY 8421

SS/PZC LOOKIN LIKE SOMETHING

4040000 B-C LOOKIN SHARP 7002E

CE	BW	WW	YW	ADG	MCE	MILK	MWW	STAY
6.3	3.7	82.8	122.7	0.25	4.1	18.1	59.4	12.2
DOC	CW	YG	MARB	BF	REA	SHR	\$API	\$TI
11.0	37.8	-0.43	-0.05	-0.090	1.03	-0.27	104.5	72.5

lot 7A

4 SEXED FEMALE IVF EMBRYOS

TL REVENANT 35

REVELATION 2K

4153090 RIED BANDED MAE

JSUL SOMETHING ABOUT MARY 8421

SS/PZC LOOKIN LIKE SOMETHING

4040000 B-C LOOKIN SHARP 7002E

CE	BW	WW	YW	ADG	MCE	MILK	MWW	STAY
8.2	2.9	76.3	108.5	0.21	3.5	13.9	52.0	9.5
DOC	CW	YG	MARB	BF	REA	SHR	\$API	\$TI
9.1	30.2	-0.34	-0.03	-0.070	0.78		100.1	69.2

lot 7B

4 SEXED FEMALE IVF EMBRYOS

BNWZ DIGNITY 8017

UDE NEW HEIGHTS 62/87

4464763 FCF PHYLLIS 532

JSUL SOMETHING ABOUT MARY 8421

SS/PZC LOOKIN LIKE SOMETHING

4040000 B-C LOOKIN SHARP 7002E

CE	BW	WW	YW	ADG	MCE	MILK	MWW	STAY
9.1	1.8	81.5	129.0	0.30	5.5	12.1	52.8	10.7
DOC	CW	YG	MARB	BF	REA	SHR	\$API	\$TI
11.1	45.9	-0.07	0.19	0.000	0.70		107.9	73.4

- SS/PZC Looking Like Something, SAMI, is beginning to be a primary donor in the Simmental lineup here at Polzin Cattle. SAMI was campaigned by Brooke Polzin as one of the most successful heifers in Minnesota, and the recent show seasons. Her wins included Champion Purebred Simmental at the 2023 Minnesota Simmental Field Day, Reserve Supreme Champion Breeding Heifer at the Minnesota Youth Livestock Expo, and Champion Simmental at the Minnesota State Fair. Her mother, B-C Lookin Sharp 7002E, is one of the Simmental breeds most recognizable donors that adds style, quality, and value.
- Next Level has proven to put his mark on the Simmental breed and we couldn't be more excited to see what this mating holds! The recipient is due January 15 in Hecla, South Dakota where Frontier Embryo Center will calve the recipient out and help arrange trucking to the new buyer.
- Chris Polzin and Brooke Polzin, Darwin, MN, Chris Polzin (612) 916-0105

Trust Fund x Loretta Heifer Pregnancy



KLER/GANA LORETTA LO10 - Dam of Lot 8 heifer pregnancy.



RJ TRUST FUND 212K - Sire of Lot 8 heifer pregnancy.

- We are extremely excited about this mating: KLER Gana Loretta × RJ Trust Fund—a sexed heifer pregnancy loaded with opportunity. Gana Loretta is a standout female, offering an exceptional look, tremendous body mass, and the right balance of structure and style. She's the kind that grabs your attention and keeps it—built right from the ground up. She was the Champion Simmental female at the 2024 Colorado Breed Bash and extremely competitive at every show she was taken to, but the real value is as a brood and donor cow with the kind she is. When you add RJ Trust Fund into the equation, this mating takes another step forward, stacking elite looks with proven power. RJ Trust Fund 212K is a superb 3/4 Simmental sire that is destined to make a huge impact through his progeny. Trust Fund gives you a wow factor look with all the practical parts of function and performance needed by any cattle program.
- This is the type of future breeding piece we plan to expand upon as our kids advance in the show ring—genetics we believe in and are building around for the long haul. Simply put, this is an opportunity you won't want to miss.
- Heifer Pregnancy due March 20, 2026.
- K-LER Cattle, St. Charles, MN, Seth Kaehler (507) 272-5403 |

lot
8

HEIFER PREGNANCY

Due March 20, 2026

W/C BANKROLL 811D

RJ TRUST FUND 212K

4147173

HARA'S KIM KARDASHIAN 1C

EC REBEL 156F

KLER/GANA LORETTA LO10

4279990

WRS HEAT'N UP H010

CE	BW	WW	YW	ADG	MCE	MILK	MWW	STAY
8.2	4.0	75.8	107.7	0.20	5.2	19.2	57.0	9.5
DOC	CW	YG	MARB	BF	REA	SHR	\$API	\$TI
7.7	28.5	-0.44	0.05	-0.090	0.92	-0.26	102.9	70.6



BOSC SUMMER M428 - Sells as Lot 9.



lot
9

BOSC SUMMER M428

BD: 4/18/2024 | 3/4 SM 1/4 AN Cow 4491420 | Tattoo: M428

VCL FORESIGHT

Homo Black

STCC TECUMSEH 058J

Polled

3958195

HF SERENA

GATEWAY FOLLOW ME F163

CCS/JS SUMMER 31H

3758577

WHF SUMMER 365C

CE	BW	WW	YW	ADG	MCE	MILK	MWW	STAY
8.0	3.5	77.2	106.1	0.18	3.7	17.1	55.9	12.2
DOC	CW	YG	MARB	BF	REA	SHR	\$API	\$TI
9.6	27.8	-0.32	0.27	-0.053	0.83	-0.30	108.5	73.1

• CCS/JS Summer 31H, known by the crew as "Dixie" was our pick from and the high selling percentage female from JS's 2020 Midwest Made Elite Female Sale commanding a \$17,000 hammer price. In her time on halter 31H was a heavy structured, uniquely angular female who came with a special combination of rib shape and lower third. As a result, Dixie was no stranger to success in the ring finding herself reserve overall percentage pair at Eastern Regionals, 7th overall pair at the National Classic and a class win in an extremely deep division at Cattleman's Congress as a bred. This powerfully designed Tecumseh daughter not only presents an incredible genetic opportunity in combining two matriarchs of the Simmental breed with HF Serena 74Y on the top side of her pedigree and WHF Summer 365C on the bottom side, but is also a phenotypic standout, presenting a uniquely attractive front end on a flexible skeleton and robust build. With a full sister commanding \$24,000 in Dwyer's 2024 Next Generation sale and 3 bred sisters by Broker averaging \$8,000 in this year's Rare Vintage, M428 has all the makings of a true Donor Sired by the 600,00 Tecumseh with a Night Watch calf to get it all started.

• AI TO W/C NIGHTWATCH 5/1/2025 PE TO W/C SATISFIED 5/15-6/26/25 VET CALLED SAFE TO AI DUE 2/10/26

• Ferguson Cattle Co., Jefferson, OH, John Ferguson (440) 478-0782, Lindsey Rowland (440) 478-0503



SCC TECUMSEH 058J - Sire of Lot 9.



WHF JS CCS WOODFORD J001 - Maternal brother to the dam of Lot 9.



LLSF MISS MYA M617 - Lot 10.

Lee Simmental Farms



JS BLACK SATIN 9B - Second dam of Lot 10.



WHF/JS/CCS
WOODFORD J001 -
Sire of Lot 10.

lot
10

LLSF MISS MYA M617

BD: 5/12/2024 | PB SM Cow 4539986 | Tattoo: M617

EGL FIRESTEEL 103F

Homo Black

WHF/JS/CCS WOODFORD J001

Polled

4068398

WHF SUMMER 365C

LLSF PAYS TO BELIEVE ZU194

CLAC BLACK SATIN 559G

3592705

JS BLACK SATIN 9B

CE	BW	WW	YW	ADG	MCE	MILK	MWW	STAY
10.6	2.2	82.6	119.2	0.23	4.7	20.8	62.0	17.3
DOC	CW	YG	MARB	BF	REA	SHR	\$API	\$TI
10.4	29.1	-0.32	0.20	-0.072	0.69	-0.35	137.0	82.1

- Donor cow Deluxe! We love the way this female combines overall mass and body shape with a striking look while maintaining a perfect balance on a fault free skeletal structure. This female is extremely flexible and correct in her mobility. From the ground up this female is built for longevity with plenty of flex in her hock which transitions into plenty of bone and extra body and rib shape. Her dam stems from a very productive cow family being out of "Boots" and LLSF Pays to Believe. Her dam is one of our top donors in our program. There are endless possibilities for matings with this female. Seller reserves the right to 2 flushes @ the expense of the seller and convenience of the buyer guaranteeing 6 number 1 embryos. She sells bred AI 5/11/25 to ROCKING P PRIVATE STOCK H010.

- Lee Simmental, Columbia, MO, Jerry Lee (573) 881-5629

ROCKING P PRIVATE STOCK H010 -

Service sire of Lot 10.



CK Cattle Pen of Purebred Heifers



CKCC MS NORAH 5796N - Lot 11B.

CK cattle



KTE MS NATASHA 5704N - Lot 11A.

lot
11A

KTE MS NATASHA 5704N

BD: 3/8/2025 | PB SM Cow 4565197 | Tattoo: 5704N

HOOK'S EAGLE 6E

Homo Black

WAGR PATRIOT 1008J

Homo Polled

3961833

WAGR MS INNOVATOR 9048G



MR CCF 20-20

KTE MS JOLENE 1605J

3878801

KTE MS DIXIE 9663G ET

CE	BW	WW	YW	ADG	MCE	MILK	MWW	STAY
8.9	2.0	97.3	148.2	0.32	3.9	17.7	66.3	14.6
DOC	CW	YG	MARB	BF	REA	SHR	\$API	\$TI
13.2	40.3	-0.40	0.31	-0.067	1.13	-0.40	143.6	94.3

lot
11B

CKCC MS NORAH 5796N

BD: 3/27/2025 | PB SM Cow 4556811 | Tattoo: 5796N

RUBY'S CURRENCY 7134E

Homo Black

CKCC LINCOLN 0631H ET

Hetero Polled

3786566

FSCC BELLA



SC PAY THE PRICE C11

CKCC SERENA 9629G ET

3631943

HF SERENA

CE	BW	WW	YW	ADG	MCE	MILK	MWW	STAY
1.2	6.5	94.1	138.8	0.28	3.7	23.0	70.0	9.3
DOC	CW	YG	MARB	BF	REA	SHR	\$API	\$TI
11.4	63.2	-0.30	0.34	-0.081	1.00	-0.31	113.8	85.8



THE 2024 CHAMPION PEN OF 3 PUREBRED HEIFERS FROM CK CATTLE.

CK Battle Pen of Purebred Heifers

lot
11C

KTE MS NATALIA 5695N

BD: 3/7/2025 | PB SM Cow 4565198 | Tattoo: 5695N

ES RIGHT TIME FA110-4

Homo Black

KCC1 COUNTERTIME 872H

Homo Polled

3806012

KCC1 HAVANA 83E



HOOK'S EAGLE 6E

KTE MS JAZMYN 1607J

3878800

KTE TRIXIE 9732G

CE	BW	WW	YW	ADG	MCE	MILK	MWW	STAY
8.5	2.0	89.8	135.0	0.28	3.9	16.8	61.7	15.7
DOC	CW	YG	MARB	BF	REA	SHR	\$API	\$TI
12.5	32.4	-0.37	0.36	-0.073	0.88	-0.38	144.5	90.5

lot
11D

CKCC MS NIKKY 5881N

BD: 2/21/2025 | PB SM Cow 4604397 | Tattoo: 5881N

WELSHS DEW IT RIGHT067T

Homo Black

ES RIGHT TIME FA110-4

Homo Polled

3481590

ES A110



CDI INNOVATOR 325D

WAGR MS INNOVATOR 9026G

3679822

WAGR MS VISION 5502C ET

CE	BW	WW	YW	ADG	MCE	MILK	MWW	STAY
11.1	-0.8	80.9	126.5	0.29	7.4	24.7	65.0	14.0
DOC	CW	YG	MARB	BF	REA	SHR	\$API	\$TI
12.0	51.3	-0.23	0.25	-0.058	0.80	-0.30	140.0	86.7

- What an amazing opportunity here from a program built on a winning tradition, especially here at the National Western Stock Show in Denver, CO! Chris and Kristi Effling and their girls have relinquished the opportunity to pick from their pen of Purebred heifers they are exhibiting at the 2026 NWSS Simmental pen show. Their past success is indicative of the extreme quality they are presenting to the buying public as they have exhibited the Champion Pen of 3 Purebred heifers in 2024 and 2023 as well as the Champion Pen of 3 Percentage Heifers in 2022. The sold pick of their crowd favorite pen in the 2025 One and Only sale and the featured female was CKCC MS MARILYN 4728M who topped the sale at \$67,000.
- Lot A is a stunning baldy that is sired by the \$30,000 Waggonhammer sire WAGR Patriot 1008J, whose last two calf crops at CK have been sale favorites. Lot B has a powerful build and is out of a maternal sister to the \$680,000 STCC Tecumseh. Lot C is an extremely attractive black female and sired by the \$230,000 KCC1 Countertime 872H. Lot D is absolutely flawless and goes back to the iconic mother of herd bulls and influential donors, 3C MELODY M668 BZ. No matter which of these powerhouse heifers you pick, she will end up in your donor battery!
- CK Cattle, Highmore, SD, Chris & Kristi Effling, Cagney, Chesney, & Kenidey, Chris (605) 769-0142, Kristi (605) 769-1308



CKCC MS NIKKY 5881N - Lot 11D.



KTE MS NATALIA 5695N - Lot 11C.

CK Cattle Pen of Percentage Heifers



CKCC MS NELLY 5714N - Lot 12A.



CKCC MS NATALIE 5673N - Lot 12B.



THE 2023 CHAMPION PEN OF 3 PUREBRED HEIFERS FORM CK CATTLE.



THE 2022 CHAMPION PEN OF 3 PERCENTAGE HEIFERS FROM CK CATTLE.

CK cattle Pen of Percentage Heifers

KTE MS NANCY 5653N ET - Lot 12C.



lot
12A

CKCC MS NELLY 5714N

BD: 3/10/2025 | 3/4 SM 1/4 AN Cow 4556891 | Tattoo: 5714N

BRIDLE BIT RESOURCE G9117 Homo Black
BRIDLE BIT RECHARGE K256 Homo Polled
4058272 BRIDLE BIT MISS G948

TJ FRANCHISE 451D
R&R ADELE J146
3951290 R&R MISS HALFTIME D611

CE	BW	WW	YW	ADG	MCE	MILK	MWW	STAY
5.0	3.1	94.6	144.7	0.31	3.3	20.3	67.5	13.3
DOC	CW	YG	MARB	BF	REA	SHR	\$API	\$TI
14.8	45.8	-0.29	0.35	-0.051	0.99	-0.39	121.2	86.5

lot
12B

CKCC MS NATALIE 5673N

BD: 3/3/2025 | 5/8 SM 11/32 AN 1/32 CS Cow 4556831 | Tattoo: 5673N

ES RIGHT TIME FA110-4 Homo Black
CKCC RELEVANT 0639H Homo Polled
3786555 R&R SOPHISTICATION C519

ASA
DWA
EC REBEL 156F
CKCC MS ABIGALE 0643H
3786631 VAR MAGIC ABIGALE 175

CE	BW	WW	YW	ADG	MCE	MILK	MWW	STAY
6.0	2.9	83.8	132.5	0.30	3.6	22.0	64.2	14.6
DOC	CW	YG	MARB	BF	REA	SHR	\$API	\$TI
12.9	61.8	-0.21	0.25	-0.048	0.96		115.7	77.8

lot
12C

KTE MS NANCY 5653N ET

BD: 2/28/2025 | PB SM Cow 4604396 | Tattoo: 5653N

OMF EPIC E27 Hetero Black
WINC ALL RIGHT 213K Homo Polled
4100635 WINC HOLLIE

ASA
DWA
PROFIT
KTE MS LOLA 1622J ET
3977410 SJF EMERALD

CE	BW	WW	YW	ADG	MCE	MILK	MWW	STAY
2.3	3.4	83.5	125.5	0.26	2.0	23.4	65.0	11.5
DOC	CW	YG	MARB	BF	REA	SHR	\$API	\$TI
12.2	43.7	-0.20	0.33	-0.042	0.72	-0.34	120.3	82.8

- CK/Wager Cattle dug deep this year in their commitment to the National Western Stock Show, an event that is near and dear to the Effling and Wager families. We are offering a chance to pick from their Percentage pen, of which one of them is purebred. Remember the success they have had at this prestigious event. Their past success is indicative of the extreme quality they are presenting to the buying public as they have exhibited the Champion Pen of 3 Purebred heifers in 2024 and 2023 as well as the Champion Pen of 3 Percentage Heifers in 2022. The sold pick of their crowd favorite pen in the 2025 One and Only sale and the featured female was CKCC MS MARILYN 4728M who topped the sale at \$67,000.
- Lot A is extremely broody, stout and correct and is sired by the \$100,000 Bridle Bit Recharge K256, who was a sale feature in the 2025 One and Only where he sired the \$67,000 top-selling female and sold fall possession in him for \$50,000 in the same sale. Lot B is a striking baldy with extra substance and is by the \$45,000 Windy Creek purchase CKCC RELEVANT 0639H. Lot C is extremely classy and upheaded and is Kenidey's bred and owned heifer that she will show on the hill and if someone is to buy her, she would like to retain possession and show rights through Jr Nationals. However, those details can be negotiated.
- CK Cattle, Highmore, SD, Chris & Kristi Effling, Cagney, Chesney, & Kenidey, Chris (605) 769-0142, Kristi (605) 769-1308

CK cattle

Baty Pen of Heifers



BTYL TUNA 823N - Lot 13A.



TL ON THE RUN 106L -
Sire of Lot 13A.



BTYL WICKED
TUNA 322H -
Dam of Lot 13A.



MATERNAL SISTER TO LOT 13A.



DAM OF LOT 13A PICTURED AT NWSS.



DAM OF LOT 13A PICTURED AT JUNIOR NATIONALS.



BTYL NOCONA 802N - Lot 13B.



BTYL NOCONA 2156 -
Dam of Lot 13B.

DAM OF LOT 13B
PICTURED AT JUNIOR
NATIONALS.



VCL FORESIGHT - Sire of Lot 13B.



DAM OF LOT 13B PICTURED AT JUNIOR NATIONALS.



DAM OF LOT 13B PICTURED AT NAILE.

Baty Pen of Heifers



BTYL PUMA 814N - Lot 13C.



BTYL LADY PUMA 311H - Dam of Lot 13C.



SO REMEDY 7F - Sire of Lot 13C.



lot
13A

BTYL TUNA 823N

BD: 2/19/2025 | PB SM Cow 4575675 | Tattoo: 823N

SECOND CHANCE 601H
TL ON THE RUN 106K
4325400 EC COUNTSE 283F

SC PAY THE PRICE C11
BTYL WICKED TUNA 322H
3776874 GCC MISS BROKER 194E

CE	BW	WW	YW	ADG	MCE	MILK	MWW	STAY
9.5	1.3	71.6	101.8	0.19	4.8	19.9	55.6	9.3
DOC	CW	YG	MARB	BF	REA	SHR	\$API	\$TI
9.4	33.1	-0.34	0.12	-0.066	0.84	-0.31	112.4	74.3

• BTYL Tuna 823N is out of Sydney Baty's competitive show heifer BTYL Wicked Tuna who had an incredible run being crowned as the Reserve Bred & Owned Percentage Heifer 2021 AJSA National Classic as well as Grand Champion Percentage Simmental 2022 NWSS Open Show. BTYL Wicked Tuna has done wonders for our program with her heifer progeny sales averaging \$27,000. This first heifer reminds us so much of her dam as a young female.

- Things have looked a little different at Baty Livestock this year. Ken & Jane Baty along with Sydney and Steven have decided to try something a little different this year, so we are going to offer for sale the first pen we have shown in the yards! Being a Colorado-based herd, we have always talked about showing a pen at Denver, and we were able to make it work this year. These three outstanding females have unlimited potential to excel in the show ring as well as go home and help push your program to new heights. Baty Livestock has started to transition to keep back younger females to add to our donor herd, and these three were pulled straight out of the keeper pen to come to Denver! These are three of the best Purebred females we had born this year out of our top donor females. If you like sound, athletic cattle that are big ribbed, and stout pinned, here are the ladies you want to look at. They all have a killer look but can still go out to pasture and give you a huge return on your investment.
- Baty Livestock, LLC, Loveland, CO, Ken Baty (970) 685-1745, Sydney Baty (970) 685-2375

lot
13B

BTYL NOCONA 802N

BD: 1/20/2025 | PB SM Cow 4575661 | Tattoo: 802N

MR CCF 20-20
VCL FORESIGHT
3506652 HCCO COUNTSE 412D

GSC GCCO DEW NORTH 102C
BTYL NOCONA 215G
3565430 GCC MISS BROKER 7202E

CE	BW	WW	YW	ADG	MCE	MILK	MWW	STAY
6.9	2.9	81.4	112.4	0.19	3.6	19.5	60.2	7.0
DOC	CW	YG	MARB	BF	REA	SHR	\$API	\$TI
8.1	29.2	-0.37	0.05	-0.068	0.88	-0.34	100.7	75.8

• BTYL Nocona 802N is out of one of Sydney Baty's first Bred and Owned females, BTYL Nocona, and she made her mark in the show ring being awarded Reserve Bred & Owned Percentage Heifer 2020 AJSA National Classic, 2020 Best Animal Bred & Owned NAILE and the 2021 AJSA National Grand Champion Bred & Owned % Pair and Owned % Pair. Just like her dam, her best days are as a bred heifer!

lot
13C

BTYL PUMA 814N

BD: 2/5/2025 | PB SM Cow 4575669 | Tattoo: 814N

HPF/HILL UPRISING C104
SO REMEDY 7F
3419044 B&K CREAM SODA 8D

W/C BANKROLL 811D
BTYL LADY PUMA 311H
3773017 JS BLACK SATIN 9B

CE	BW	WW	YW	ADG	MCE	MILK	MWW	STAY
9.3	2.5	80.4	120.3	0.25	4.3	23.1	63.2	8.8
DOC	CW	YG	MARB	BF	REA	SHR	\$API	\$TI
11.3	37.0	-0.46	-0.13	-0.093	1.07	-0.27	100.6	73.3

• BTYL Puma 814N comes out of the \$530,000 bull SO Remedy 7F. He has made a huge impact on the Simmental breed with many high selling cattle, and he has racked up numerous progeny backdrops. We feel this female can follow in those footsteps by being a competitive show heifer but her best days are in the donor pen making her mark on your program.

Dickinson Pen of Heifers



MS DS NAIAD 33N - Lot 14A.



MS DS PEARL 61N - Lot 14B.



ROCKING P PRIVATE STOCK H010 - Sire of Lots 14A, 14B, 14C.



BTYL WICKED TUNA 322H - Maternal sister to the dam of Lots 14A, 14B and 14C.



MS DS CORAL 62N - Lot 14C.

lot
14A

MS DS NAIAD 33N

BD: 4/5/2025 | PB SM Cow 4607996 | Tattoo: 33N

WLE COPACETIC E02

Homo Black

ROCKING P PRIVATE STOCK H010

Homo Polled

3775641 RP/MP BUILT TO LOVE A021

PROFIT

BTYL BARRACUDA 409J

3935111 GCC MISS BROKER 194E

CE	BW	WW	YW	ADG	MCE	MILK	MWW	STAY
8.3	3.2	84.8	125.2	0.25	4.0	13.8	56.1	9.6
DOC	CW	YG	MARB	BF	REA	SHR	\$API	\$TI
5.1	32.8	-0.26	0.28	-0.067	0.59		122.1	83.0

lot
14C

MS DS CORAL 62N

BD: 4/8/2025 | PB SM Cow 4607997 | Tattoo: 62N

WLE COPACETIC E02

Homo Black

ROCKING P PRIVATE STOCK H010

Homo Polled

3775641 RP/MP BUILT TO LOVE A021

PROFIT

BTYL BARRACUDA 409J

3935111 GCC MISS BROKER 194E

CE	BW	WW	YW	ADG	MCE	MILK	MWW	STAY
8.3	3.2	84.8	125.2	0.25	4.0	13.8	56.1	9.6
DOC	CW	YG	MARB	BF	REA	SHR	\$API	\$TI
5.1	32.8	-0.26	0.28	-0.067	0.59		122.1	83.0

lot
14B

MS DS PEARL 61N

BD: 4/3/2025 | PB SM Cow 4607998 | Tattoo: 61N

WLE COPACETIC E02

Homo Black

ROCKING P PRIVATE STOCK H010

Homo Polled

3775641 RP/MP BUILT TO LOVE A021

PROFIT

BTYL BARRACUDA 409J

3935111 GCC MISS BROKER 194E

CE	BW	WW	YW	ADG	MCE	MILK	MWW	STAY
8.3	3.2	84.8	125.2	0.25	4.0	13.8	56.1	9.6
DOC	CW	YG	MARB	BF	REA	SHR	\$API	\$TI
5.1	32.8	-0.26	0.28	-0.067	0.59		122.1	83.0

- In a business where consistency is essential—not only for strengthening the bottom line but for building the next generation. We are proud to offer your choice of our 2026 Pen of Three Purebred Females. These heifers are the result of our first flush out of our newest donor, BTYL Barracuda 409J.
- These three Rocking P Private Stock daughters are cut from the same mold—soft, feminine, and elegant with the presence to stand out in the show ring. Yet they still offer the bone, foot, and power needed to go home and raise your next herd sire.
- After watching the Baty family campaign BTYL Wicked Tuna to major wins across the country in 2021 and 2022, we knew we wanted to incorporate that genetic line into our own program. GCC Miss Broker 194E has proven herself to be one of Baty's most consistent and impactful donors, generating elite prospects like Wicked Tuna and Barracuda—cattle that win in the ring and then go on to raise winners. Wicked Tuna herself raised the 4th Overall Purebred Female at the 2024 Junior Nationals.
- Dickinson Ranch, Gorham, KS, Mitchell Dickinson (785) 735-4107

Wills Pen of Heifers



WILLS PRINCESS 825N - Lot 15A.



CLRS HOMELAND 327H -
Sire of Lot 15A.



WILL MISS ANN 895N - Lot 15B.



LBRS GENESIS 669 -
Sire of Lot 15B.



WILLS GRACE 737N - Lot 15C.



CCR FIRE POWER 8081J -
Sire of Lot 15C.

• Heath and Courtney Wills run a SimAngus influenced cowherd on the edge of the Sandhills of Alliance, NE along with a commercial feed yard and several acres of hay and crop ground. They market their bulls through Powerline Genetics. The Wills' utilize AI, embryo transfer, and purchase high end Powerline bulls to run on their cows. They have been active multipliers of the program for 20 years. Heath and Courtney raise bulls that are consistent, functional, and can thrive in a variety of environments. They consistently tried to improve their cow herd to generate bull making mamas that possess genotype as well as phenotype that work in all aspects of the industry. These females are a perfect representative of what their program strives to produce.

• Wills Farms, Alliance, NE, Heath Wills (308) 760-7411



lot
15A

WILLS PRINCESS 825N

BD: 1/31/2025 | 3/8 SM 17/32 AN 3/32 CS Cow 4604423 | Tattoo: 825N

REDHILL 672X X004 231A

Black

CLRS HOMELAND 327H

Polled

3709222

CLRS ALWAYS XCELLENT

HAYNES OUTRIGHT 452

WILLS 825 OF 670

-3684835

WILLS 670 OF 01

CE	BW	WW	YW	ADG	MCE	MILK	MWW	STAY
8.9	0.5	88.7	141.1	0.33	6.0	20.2	64.6	20.5
DOC	CW	YG	MARB	BF	REA	SHR	\$API	\$TI
13.3	49.4	-0.22	0.51	-0.035	0.94		148.3	88.7

• Here is a royally maternally bred 1/2 blood female that has plenty of length and performance. She is in the top 20% for WW and YW growth as well in the top 30% for API and TI. Her sire, CLRS Homeland 327H, is a rare individual for combining extra muscle shape and power with correctness and an elite look and EPD profile.

lot
15B

WILLS MISS ANN 895N

BD: 1/21/2025 | 1/2 SM 1/2 AN Cow 4604441 | Tattoo: 895N

WS PROCLAMATION E202

Black

LBRS GENESIS 669

Polled

3603651

LBR DIANA D69



MUSGRAVE BIG SKY

WILLS 895 OF 5372

-3684897

WILLS 5372

CE	BW	WW	YW	ADG	MCE	MILK	MWW	STAY
9.1	2.4	99.1	155.9	0.36	6.9	24.5	73.4	6.2
DOC	CW	YG	MARB	BF	REA	SHR	\$API	\$TI
16.5	62.4	0.00	0.78	0.007	0.75	-0.28	138.1	100.8

• This 1/2 female is loaded with elite growth ranking in the top 4% for WW, YW as well as TI. Her dam is one of our best cows as her 1st calf was a \$12,000 bull in the sale. Her Genex sire, Genesis, was the high-selling herd sire standout from the 2020 Bulls of the Big Sky sale offering. He offers complete, fault-free genetics for growth, maternal, carcass and \$Index values. His pedigree is stacked with breed-leading, time-tested maternal donors: WS Miss Sugar C4, Hook's Patti 3P and LBR Night Dream M22.

lot
15C

WILLS GRACE 737N

BD: 2/1/2025 | 1/2 SM 3/8 AN Cow 4604447 | Tattoo: 737N

EGL FIRESTEEL 103F

Black

CCR FIRE POWER 8081J

Polled

4029010

CCR MS COMMAND 8081F



CCR COWBOY CUT 5048Z

WILLS 737 OF 321

3682680

WILLS 321 OF 921

CE	BW	WW	YW	ADG	MCE	MILK	MWW	STAY
6.1	3.5	80.3	125.8	0.28	4.4	22.9	62.9	11.4
DOC	CW	YG	MARB	BF	REA	SHR	\$API	\$TI
16.7	55.2	-0.25	0.70	-0.053	0.96		131.9	86.6

• This powerhouse comes from one of our elite cow families as her second dam serves as a donor cow. She falls into the top 10% for Docility, 15% for CW, 15% for Marbling and 15% for REA. One of the most physically impressive SimAngus bulls you will find. Her sire offers explosive growth and stoutness and come with impeccable balance. Fire Power's combination of WW & YW combined with his marbling and STAY are a rare genetic find. His pedigree on his dam's side represents Cow Camp Ranch best producing cows.

New Trend and Holt Open Heifers

- Lot 16 is an outstanding daughter of WLE Copacetic E02, the Homozygous Black, Homozygous Polled) 3/4 blood that dominated the 2018 show season, being crowned champion at both the NAILE National show and the American Royal. He is extra sound structured with lots of flex at his joints and has that great profile and clean pattern we all love with a tick extra body with and transmits it to his progeny. Her dam by the immortal W/C Relentless 23C comes from an outstanding cow family. This one is special in her type and kind with a powerful build, tremendous rib shape, length of side, soundness and femininity up through her 1/3. She will surely show and then find her way to the donor pen.
- New Trend Cattle Co., Boley, OK, Tim, Derri and Jacey Massey, Tim (539) 299-2179, Derri (539) 299-2178, Jacey (539) 299-1009



NEW TREND MAGNOLIA 2N - Lot 16.

lot
16

NEW TREND MAGNOLIA 2N

BD: 1/12/2025 | PB SM Cow 4554649 | Tattoo: 2N

HPF QUANTUM LEAP Z952

Black

WLE COPACETIC E02

3299037

CMFM JOY 022B

Polled

W/C RELENTLESS 32C

NEW TREND FIRST CLASS 6L

4187247

NEW TREND CLASS ACT 3E

CE	BW	WW	YW	ADG	MCE	MILK	MWW	STAY
8.2	3.0	83.5	120.3	0.23	4.7	14.1	55.7	8.7
DOC	CW	YG	MARB	BF	REA	SHR	\$API	\$TI
4.8	29.5	-0.45	0.09	-0.090	0.96		110.3	78.5

lot
17

HOLT MS SONORA 508N

BD: 5/3/2025 | PB SM Cow 4606810 | Tattoo: 508N

LLSF PAYS TO BELIEVE ZU194

Hetero Black

TJSC KING OF DIAMONDS

3326935

KLS DIAMOND W516

Hetero Polled



VCL LKC EQUITY 608D

HOLT MS SONORA 457F

3476727

TMAS CAPTUREADREAM 5490C

CE	BW	WW	YW	ADG	MCE	MILK	MWW	STAY
7.3	1.9	71.1	96.5	0.16	3.9	17.2	52.7	10.3
DOC	CW	YG	MARB	BF	REA	SHR	\$API	\$TI
8.0	25.1	-0.39	-0.06	-0.085	0.77	-0.35	99.3	67.9



HOLT MS SONORA 508N - Lot 17.

- You'll want to make sure to find HOLT Ms Sonora 508N in the Yards once you hit the Mile High City, arguably one of, if not the best females that we've taken to the NWSS. A May born King Of Diamonds daughter from our most consistent donor, HOLT Ms Sonora 457H who started her lucrative career back in the "Old Yards" in 2019 being the lead heifer from our Champion Pen of 3 Simmental Females, she turned a lot heads that year.
- Sonora 457H has given us a number of impressive individuals over the past few years, averaging over \$13,000 per head with the last 6 sold. Including HOLT Mr Night Vision, our high selling bull in 2021 going to CK Cattle, Doris Cattle and Smith, HOLT Ms Sonora 223K the Champion PB Simmental Female at the 2024 BHSS selling to Lindskov's LT Ranch and most recently HOLT Ms Sonora's Secret 511N ET the red baldy bomb shell who sold in our October Bold & Beautiful Online sale commanding \$21,500.
- 508N is as stout made and incredibly good looking, as you could make one, while still strutting arrogantly around on perfect structure. Her bold sprung rib cage and maternal look is equally as impressive as her exciting style and presence. This perfect blaze faced baldy PB will compete at the highest of levels and then become a dollar generating machine once put into production. Take advantage of this opportunity in Denver 2026, you won't be disappointed!
- Holt Cattle Co., Mina, SD, Jordan Holt (605) 380-1209



HOLT MS SONORA 457F -
Dam of Lot 17.

HCC NIGHT VISION -
Maternal brother to lot 17.



\$21,500 MATERNAL
SISTER TO LOT 17.

Gold Standard Open Heifers



KLER/HLL RAIN MARIE J33 - Dam of Lots 18, 19.

lot
18

GSC1 ADELINE MARIE N412 ET

BD: 4/12/2025 | PB SM Cow 4620562 | Tattoo: N412

EGL FIRESTEEL 103F Black
WHF/JS/CCS WOODFORD J001 Polled
4068398 WHF SUMMER 365C

PROFIT

KLER/HLL RAIN MARIE J33

3948324 K-LER RAIN MARIE

CE	BW	WW	YW	ADG	MCE	MILK	MWW	STAY
10.6	2.1	75.7	103.2	0.17	4.1	17.9	55.6	17.7
DOC	CW	YG	MARB	BF	REA	SHR	\$API	\$TI
7.7	20.8	-0.33	0.24	-0.062	0.71	-0.30	136.2	78.3



GSC1 ADELINE MARIE N412 ET - Lot 18.

lot
19

GSC1 ANNE MARIE N411 ET

BD: 4/11/2025 | PB SM Cow 4620561 | Tattoo: N411

EGL FIRESTEEL 103F Black
WHF/JS/CCS WOODFORD J001 Polled
4068398 WHF SUMMER 365C

PROFIT

KLER/HLL RAIN MARIE J33

3948324 K-LER RAIN MARIE

CE	BW	WW	YW	ADG	MCE	MILK	MWW	STAY
10.6	2.1	75.7	103.2	0.17	4.1	17.9	55.6	17.7
DOC	CW	YG	MARB	BF	REA	SHR	\$API	\$TI
7.7	20.8	-0.33	0.24	-0.062	0.71	-0.30	136.2	78.3



GSC1 ANNE MARIE N411 ET - Lot 19.

• K-LER/Hill Rain Marie J33 "Juanita" and the Rain Marie cow family need no introduction in Colorado and at the One & Only Sale. From a show perspective Juanita was the Supreme Champion Female in the Open Show at the Colorado State Fair and also the Champion Simmental Female in the Junior Show there as well. Juanita's dam Rain Marie had her success in the ring too, highlighted by being selected the Supreme Champion Female in the Open Show at the Minnesota State Fair in 2017. Juanita demanded \$19,500 for just 50% embryo interest on the 2023 One & Only and Rain Marie sold for \$40,000 at 8 years old just last year on this sale due to her prolific profit generating ability as a donor. It is now Juanita's turn to leave her mark! These Woodford daughters are the first heifers to ever sell out of Juanita and we are so excited to be able to offer them on the One & Only. What a prime opportunity to build upon your program with heifers that have the look, performance and the lineage to take your program to another level.

• Gold Standard Cattle Co. Winterset, IA, Justin DeBower (641) 640-1235



SKR MOLLY 98N - Lot 21.



SKY LILY 80N - Lot 20.

lot
20

SKR LILY 80N

BD: 2/27/2025 | 1/2 SM 1/2 AN Cow 4608941 | Tattoo: 80N

W/C RELENTLESS 32C Black
JSUL SOMETHING ABOUT MARY 8421 Polled
3565879 JBSF PROUD MARY

142
-3721450

CE	BW	WW	YW	ADG	MCE	MILK	MWW	STAY
12.4	-0.3	61.6	95.7	0.21	6.5	13.8	44.6	6.5
DOC	CW	YG	MARB	BF	REA	SHR	\$API	\$TI
8.0	36.4	-0.10	0.27	-0.016	0.55		104.6	68.4

- Here we have a February heifer that has a load of potential both in the show ring as well as in the pasture. Out of the great sire SAM that took the breed by storm coupled with her mother raising the 2021 Champion Bred and Owned Simmental at OYE. Here is a great opportunity to buy into what we at Robison Cattle think is an elite breeding piece to make the next generation better as well as have some fun along the way!
- Robison Cattle, Cushing, OK, Clayton Robison (918) 223-5801

lot
21

SKR MOLLY 98N

BD: 2/28/2025 | 1/2 SM 5/32 MA 3/32 AN Cow 4608942 | Tattoo: 98N

YARDLEY UTAH Y361 Black
W/C RELENTLESS 32C Polled
3045559 MISS WERNING KP 8543U

NMR MATERNAL MADE

GCC JUANADA 413F
4605305 GCC JUANADA 342B

CE	BW	WW	YW	ADG	MCE	MILK	MWW	STAY
7.6	2.7	62.5	85.1	0.14	3.1	17.3	48.4	7.8
DOC	CW	YG	MARB	BF	REA	SHR	\$API	\$TI
7.6	32.6	-0.26	0.30	-0.037	0.81	-0.17	96.2	65.5

- Out of the great Relentless bull which has stood the test of time in the Simmental breed this female is the direct daughter of the Reserve Champion maintainer at the 2020 OYE. This one is going to be a fun one to show but an even better one to raise good livestock. You can go so many ways with mating this one that you could just go crazy and you will definitely get some that hit. She's so versatile in the way she is put together that you could go with a PB Simmental bull or a High Maine bull and get something incredible.
- Robison Cattle, Cushing, OK, Clayton Robison (918) 223-5801



SFI MISS ME O MY - Dam of Lots 22A, 22B, 22C, 23.

lot
22A

SFI HEAVY HITTER N14

BD: 1/30/2025 | PB SM Bull 4579075 | Tattoo: N14

LBRS GENESIS G69 Homo Black
RUBYS QUADRANT 210K Homo Polled
4135953 RUBYS LINDA 721E



JM OL STEEL Y50
SFI MISS ME O MY
2899027 HANELS MISS AMERICA U814

CE	BW	WW	YW	ADG	MCE	MILK	MWW	STAY
12.4	1.5	95.9	148.1	0.33	7.3	29.4	77.1	15.3
DOC	CW	YG	MARB	BF	REA	SHR	\$API	\$TI
14.1	46.1	-0.31	0.31	-0.057	1.00		149.4	95.3

lot
22B

SFI KING PIN N16

BD: 2/1/2025 | PB SM Bull 4579076 | Tattoo: N16

LBRS GENESIS G69 Homo Black
RUBYS QUADRANT 210K Homo Polled
4135953 RUBYS LINDA 721E



JM OL STEEL Y50
SFI MISS ME O MY
2899027 HANELS MISS AMERICA U814

CE	BW	WW	YW	ADG	MCE	MILK	MWW	STAY
14.2	-1.9	89.1	137.5	0.30	6.7	29.4	73.7	17.6
DOC	CW	YG	MARB	BF	REA	SHR	\$API	\$TI
14.0	48.8	-0.20	0.24	-0.028	0.93		155.5	93.4

lot
22C

SFI CONVERTER N17

BD: 1/31/2025 | PB SM Bull 4570930 | Tattoo: N17

LBRS GENESIS G69 Homo Black
RUBYS QUADRANT 210K Homo Polled
4135953 RUBYS LINDA 721E



JM OL STEEL Y50
SFI MISS ME O MY
2899027 HANELS MISS AMERICA U814

CE	BW	WW	YW	ADG	MCE	MILK	MWW	STAY
11.9	0.5	93.1	140.6	0.30	6.0	29.4	75.7	13.9
DOC	CW	YG	MARB	BF	REA	SHR	\$API	\$TI
17.0	45.1	-0.39	0.14	-0.072	1.13		137.2	90.7



RUBY'S QUADRANT 210K - Sire of Lots 22A-22C, 23 embryos.

lot
23

5 IVF EMBRYOS

LBRS GENESIS G69
RUBYS QUADRANT 210K
4135953 RUBYS LINDA 721E

JM OL STEEL Y50
SFI MISS ME O MY
2899027 HANELS MISS AMERICA U814

CE	BW	WW	YW	ADG	MCE	MILK	MWW	STAY
12.4	0.6	89.8	137.2	0.30	7.2	29.4	74.1	14.4
DOC	CW	YG	MARB	BF	REA	SHR	\$API	\$TI
14.2	45.8	-0.29	0.26	-0.040	1.01	-0.40	142.2	89.9



SFI HEAVY HITTER N14 - Lot 22A.

SFI KING PIN N16 - Lot 22B



SFI CONVERTER N17 - Lot 22C.

• Prior to the 2024 breeding season, I wanted to find a sire who has a genetically different twist than we would normally use, have multiple traits in the top 1% of the breed and mate him to our best donors who have more than 40 years of selection pressure for those important traits that are not measured by EPD's. These flush mates are a result of this vision and certainly have met our high expectations. Their dam, SFI Miss Me-O-My B7 has offspring working for elite breeders from coast to coast. She has never failed, regardless of the sire. Few matrons can match her consistency, flawless skeleton and unequalled presence that she transmits to her offspring. I love the challenge of generating phenotypically superior animals and when we can enhance their genetic merit based on EPD's, it only adds value to the master plan. SFI offers pick of these three future herdsires as well as full sibling embryos.

• Schaake Farms, Westmoreland, KS, Scott (785)456-4949, Shilo (785) 844-2881



VCL BENELLI 572N - Lot 24B.



VCL REMINGTON 526N - Lot 24A.



VCL PIONEER 548 21L - Sire of Lots 24A, 24C.



KCC1 3BCC NEXT PHASE 4L - Sire of Lot 24B.



VCL WINCHESTER 569N - Lot 24C.



WAGR PANARAMA 204Z - Second dam of Lots 24A-24C.

lot
24A

VCL REMINGTON 526N

BD: 2/15/2025 | PB SM Bull 4604817 | Tattoo: 526N

STCCTECUMSEH 058J

Black

VCL PIONEER 548 21L

Polled

4234264

MECC ELLIE 34H

SO REMEDY 7F

SWSN PANARAMA 51J

3939182

WAGR PANARAMA 204Z

CE	BW	WW	YW	ADG	MCE	MILK	MWW	STAY
7.5	3.8	85.2	125.6	0.25	3.6	21.9	64.4	9.9
DOC	CW	YG	MARB	BF	REA	SHR	\$API	\$TI
10.1	38.5	-0.42	0.22	-0.091	0.98	-0.26	118.9	82.6

lot
24B

VCL BENELLI 572N

BD: 3/20/2025 | PB SM Bull 4604818 | Tattoo: 572N

NEXT LEVEL

Black

KCC1 3BCC NEXT PHASE 4L

Polled

4285663

KCC1 SWC HARMONY 847H

SO REMEDY 7F

SWSN PANARAMA 51J

3939182

WAGR PANARAMA 204Z

CE	BW	WW	YW	ADG	MCE	MILK	MWW	STAY
9.5	2.2	81.8	124.5	0.27	5.3	21.1	61.9	12.5
DOC	CW	YG	MARB	BF	REA	SHR	\$API	\$TI
12.7	35.7	-0.41	0.12	-0.092	0.89		122.9	80.2

lot
24C

VCL WINCHESTER 569N

BD: 3/18/2025 | PB SM Bull 4604816 | Tattoo: 569N

STCCTECUMSEH 058J

Black

VCL PIONEER 548 21L

Polled

4234264

MECC ELLIE 34H

SO REMEDY 7F

SWSN PANARAMA 51J

3939182

WAGR PANARAMA 204Z

CE	BW	WW	YW	ADG	MCE	MILK	MWW	STAY
7.5	3.8	85.2	125.6	0.25	3.6	21.9	64.4	9.9
DOC	CW	YG	MARB	BF	REA	SHR	\$API	\$TI
10.1	38.5	-0.42	0.22	-0.091	0.98	-0.26	118.9	82.6

Vogler Cattle Co. has continually supported the One and Only Simmental Sale with a powerful pen of bulls, and this year is no different. These three brothers are out of the famed Panarama clan and their dam was a \$50,000 high-seller at the 25th Customer Appreciation Sale. The \$400,000 Profit is a maternal brother to their dam as well. The maternal grandam, WAGR Panarama 204Z is one of the highest dollar-generating females in the Simmental breed, and her influence will remain everlasting at Hartman Cattle Company. Additionally, a maternal sister to the dam produced the \$210,000 FRKG Victory 78J. On the paternal side the sire of two of the herd bull prospects, VCL PIONEER 548 21L, was the \$21,000 featured bull in the 2024 One & Only Sale and a crowd favorite as the second high-selling bull to Mike Moser of South Dakota. The third is sired by the \$95,000 KCC1 3BCC Next Phase 4L, who is a maternal brother to the \$49,000 KCC1 3BCC Legend 5L, the \$450,000 KCC1 Krypton 100K, the \$82,500 KCC1 3BCC Harmony 4019M, and the \$38,000 3BCC SWC KCC1 Kavanna Kay. Take your choice on these three full brothers as they are stout, correct and sound in every way with performance, shape and dimension we all need with extra class and eye-appeal.

Vogler Cattle Co., Ashland, NE, Les Vogler (402)450-2340, Loren Vogler (402) 432-9070

Vogler
Cattle Co.



HOLT MR SAM 616N ET - Lot 25.

lot
25

HOLT MR SAM 616N ET

BD: 3/10/2025 | PB SM Bull 4606808 | Tattoo: 616N

W/C RELENTLESS 32C
JSUL SOMETHING ABOUT MARY 8421
3565879 JBSF PROUD MARY

Homo Black
Homo Polled



VCL LKC EQUITY 608D

HOLT MS SONORA 457F

3476727 TMAS CAPTUREADREAM 5490C

CE	BW	WW	YW	ADG	MCE	MILK	MWW	STAY
9.1	1.7	74.8	104.9	0.19	4.2	12.1	49.4	8.9
DOC	CW	YG	MARB	BF	REA	SHR	\$API	\$TI
2.4	30.9	-0.37	-0.10	-0.075	0.85	-0.24	99.1	69.4

- 616N has as much potent herd sire potential as any that we have offered. Sired by one of the most productive bulls in the Simmental breed in recent years, JSUL Something About Mary and out of our most consistent donor, HOLT Ms Sonora 457 who started her lucrative career back in the "Old Yards" in 2019 being the lead heifer from our Champion Pen of 3 Simmental Females, she turned a lot heads that year.
- Sonora 457H has given us a number of impressive individuals over the past few years, averaging over \$13,000 per head with the last 6 sold. Including HOLT Mr Night Vision, our high selling bull in 2021 going to CK Cattle, Doris Cattle and Smith, HOLT Ms Sonora 223K the Champion PB Simmental Female at the 2024 BHSS selling to Lindskov's LT Ranch and most recently HOLT Ms Sonora's Secret 511N ET the red baldy bomb shell who sold in our October Bold & Beautiful Online sale commanding \$21,500.
- 616N brings a ton of look, presence and eye appeal to the table. He throws a stellar side profile, lead by a prominent head, smooth and attractive front 1/3 while maintaining a masculine appearance. From a stoutness standpoint, 616N doesn't disappoint. Big square hip, big top with plenty of muscle in a densely made package while standing on a big foot and big bone. After taking a look at the pedigree for HOLT Mr Sam, you will quickly recognize some of the most influential Simmental sires but also some of the most dominant maternal legends the breed has to offer including, Miss Werning KP 8543U, JBSF Proud Mary, BF Miss Crysteel Tango and WAGR Sweet Caroline 106Y. A maternal sister by King Of Diamonds also sells in the 2026 One and Only Sale as lot 17.



HOLT MS SONORA 457F - Dam of Lot 25.



HCC NIGHT VISION -
Maternal brother to
Lot 25.



**\$21,500 MATERNAL
SISTER TO LOT 25.**



New Trend Bull and Flush

- Her is an exciting 1/2 blood bull that is out of our best cow family, as we are selling a flush on the second dam as Lot 27. She is the dam of New Trend All Right 1M, a featured \$15,000 herd bull purchased by Parker Cattle Co., Malad, ID in the 2025 One and Only Sale that was. He was also the Reserve Champion Purebred Bull at Oklahoma City in 2025. Aside from his rugged presence, incredible body shape and sheer power, he's got an impeccable set of running gear to keep him going for days. This bull checks all the boxes when it comes to power, structure, a striking look and a memorable, proven pedigree. He is flawless. Selling 100% interest and possession. We would like to continue to show him, but are negotiable with new owner.
- New Trend Cattle Co., Boley, Oklahoma, Tim, Derri and Jacey Massey, Tim (539) 299-2179, Derri (539) 299-2178, Jacey (539) 299-1009



GRANDSON OF LOT 27 DONOR.



NEW TREND NOW YOU SEE ME 1N - Lot 26.

lot
26

NEW TREND NOW YOU SEE ME 1N

BD: 1/8/2025 | 1/2 SM 1/2 AN Bull 4554644 | Tattoo: 1N

SCC TRADITION OF 24

Black

SCC SCH 24 KARAT 838

Homo Polled

3755729

FCF PROVEN QUEEN 419

HARKERS ICON

NEW TREND FINESSE 9F

3439247

NEW TREND INNOCENCE 7B

CE	BW	WW	YW	ADG	MCE	MILK	MWW	STAY
6.4	3.6	83.3	126.2	0.27	3.7	25.5	67.2	13.4
DOC	CW	YG	MARB	BF	REA	SHR	\$API	\$TI
13.9	49.1	-0.21	0.03	-0.027	0.96		99.3	71.3

lot
27

NEW TREND FINESSE 9F FLUSH

BD: 2/4/2018 | PB SM Cow 3439247 | Tattoo: NTCC 9F

HSF BETTER THAN EVER

Homo Black

HARKERS ICON

Homo Polled

2749104

WS KATIE S125

WHEATLAND HIGH OCTANE 169Y

NEW TREND INNOCENCE 7B

-3439239

NEW TREND FABULOUS 14Y

CE	BW	WW	YW	ADG	MCE	MILK	MWW	STAY
3.4	4.4	83.3	120.7	0.23	1.4	25.5	67.1	15.2
DOC	CW	YG	MARB	BF	REA	SHR	\$API	\$TI
13.3	29.6	-0.48	-0.17	-0.088	1.08	-0.16	100.3	70.5



NEW TREND FINESSE 9F FLUSH - Flush sells as Lot 27. Also the dam of Lot 26.

- Here's a rare and exciting opportunity straight from the heart of our program, the chance to purchase the first public IVF offering on one of our cornerstone females. You'll travel miles to find a combination of a high-quality maternal look, perfect feet, and a beautiful udder—qualities this direct Harkers Icon female possesses effortlessly.
- Finesse 9F was a many time champion for us in Canada, including Champion Simmental Female at both Farmfair and Agribition, and she has continued that tradition through her progeny. This past fall, her 24 Karat half-blood son claimed Champion Percentage Bull at the Tulsa State Fair and Junior Champion Percentage Bull Calf at Kansas City. Additionally, her maternal grandson was Reserve Champion Purebred Bull at Oklahoma City 2025 and brought \$15,000 in this sale last year.
- We've also sold daughters that have averaged over \$12,000 in recent years. Get in on this opportunity and choose the mating with the bull of your choice to generate your next great one!
- Terms of IVF cycle: Buyer will receive a minimum of six transferrable embryos and two sixty-day pregnancies. On all embryos produced above 10, buyer receives odd-numbered embryos, seller receives even-numbered embryos. Buyer pays ivf charges, semen costs and all freezing and/or transfer fees, with all freezing costs over 10 embryos being split odd/even between the buyer and the seller. Bull will be buyers' choice.
- New Trend Cattle Co., Boley, Oklahoma, Tim, Derri and Jacey Massey, Tim (539) 299-2179, Derri (539) 299-2178, Jacey (539) 299-1009

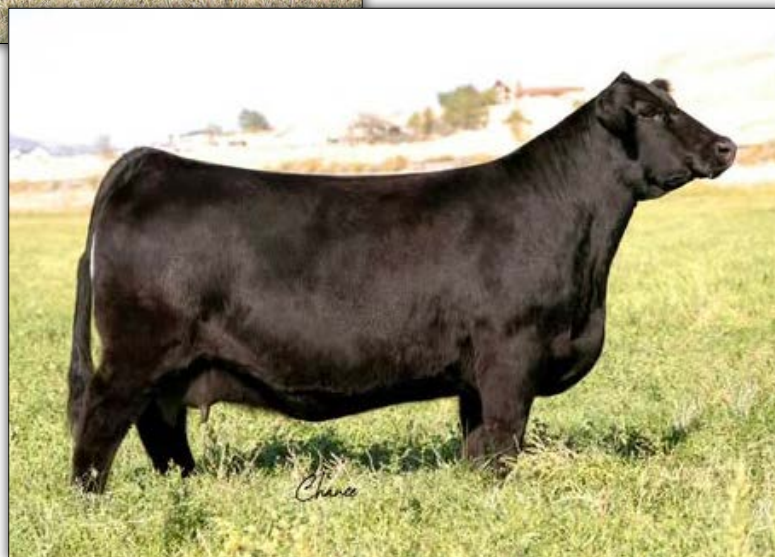
Top Hat Bull and Embryos



TPHT TESTIFY N451 - Lot 28.



BOWJ MANIFEST 985M



TPHT RUMBA G450A - Dam of Lots 28, 28A.

lot
28

TPHT TESTIFY N451

BD: 4/12/2025 | 1/2 SM 1/2 AN Bull 4555958 | Tattoo: N451

PVF INSIGHT 0129

Homo Black

RP-BCR INSIGHT G302

Homo Polled

3797367

RP/MP BUILT TO LOVE A021

HB 3753 ROCKY 7040

TPHT RUMBA G450A

3599002

TPHT CHA CHA A450W

CE	BW	WW	YW	ADG	MCE	MILK	MWW	STAY
9.1	1.8	71.5	113.0	0.26	3.9	22.6	59.0	14.5
DOC	CW	YG	MARB	BF	REA	SHR	\$API	\$TI
9.9	43.1	-0.10	0.20	-0.009	0.68		112.9	70.5

• It is exceptionally rewarding to have bred and raised such an animal as TPHT Rumba G450A, the dam of Testify. Regardless of sex, or sire, Rumba knocks it out of the park every time. Testify may be her best yet. Balanced in paper, pedigree and phenotype, one can only imagine the soft made, sound, eye appealing progeny Testify will produce. Testify was the junior Grand Champion bull at NILE. We reserve the right to show Testify during the 2026 NWSS. *Retaining 1/3 semen interest.

• Top Hat Farms, Elder, UT, Chris Beins (435) 452-1806

lot
28A

3 IVF EMBRYOS

4/B DYNAMO

BOWJ MANIFEST 985M

4435312

HCCO COUNTESS 985F

HB 3753 ROCKY 7040

TPHT RUMBA G450A

3599002

TPHT CHA CHA A450W

CE	BW	WW	YW	ADG	MCE	MILK	MWW	STAY
6.5	2.2	69.0	100.4	0.20	2.0	20.9	56.1	10.6
DOC	CW	YG	MARB	BF	REA	SHR	\$API	\$TI
10.6	29.4	-0.22	0.14	-0.050	0.57		101.7	67.4

• Ask yourself what outcross genetics with eye appealing phenotype and power are worth? A lot in today's world. Rumba meets that criteria. We feel that Rumba is only now just hitting her groove and believe she will be a National name in no time. We could fill pages of accolades about Rumba but we simply invite a phone call to discuss. This BOWJ Manifest mating will prove to be ultra exciting and we anticipate super structure, soundness, massive amounts of hair, large circumference of bone and foot, and satisfaction and delight when gifted with a bull or heifer.

• 3 IVF grade 1 embryos. Guarantee 1 pregnancy.

• Top Hat Farms, Elder, UT, Chris Beins (435) 452-1806



WLNT CRK NEPTUNE 20N - Lot 29.

lot
29

WLNT CRK NEPTUNE 20N

BD: 1/5/2025 | PB SM Bull 4599106 | Tattoo: 20N

HPF QUANTUM LEAP Z952

Hetero Black

WLE COPACETIC E02

Hetero Polled

3299037

CMFM JOY 02ZB



SC PAY THE PRICE C11

HARRELL W/C HOF ANGEL 91G

3590882

W/C MISS ANGEL 2870Z

CE	BW	WW	YW	ADG	MCE	MILK	MWW	STAY
7.1	3.4	88.4	133.7	0.28	3.3	14.0	58.1	7.4
DOC	CW	YG	MARB	BF	REA	SHR	\$API	\$TI
4.1	49.8	-0.50	0.09	-0.102	1.28		109.2	81.5

- A product of the opportunity to buy the entire Hoffman Ranch Simmental embryo inventory in 2024.
- Stems from the National Champion and foundation donor at Jared Werning cattle company, W/C MISS ANGEL 2870Z who has produced numerous champions and well as AI Sires like the \$90,000 W/C Red Bird 269J.
- The dam of this bull is a maternal sibling the 3rd overall heifer at the National Junior Simmental Show campaigned by Sara Sullivan as well as the dam of the \$192,000 W/C Bet On Red.
- Walnut Cattle Co., LLC, Topeka, KS, Joe Epperly (303) 884-3900



W/C MISS ANGEL 2870Z - Maternal granddam of Lot 29.



W/C RED BIRD 269J - Maternal brother to the dam of Lot 29.

Jared Werning Cattle Embryos



LCDR MS LONDYN 20L - Dam of Lots 30-32.



JWC RECHARGE
105N - Brother
to Lots 30-32.



GIBBS CULMINATION - Sire of Lot 31.



OMF JOURNEYMAN J24 - Sire of Lot 30 embryos.



JWC WESTERN FEEL 354M - Sire of Lot 32.

lot
30

3 IVF EMBRYOS

MR SR MIC DROP G1534
OMF JOURNEYMAN J24
3953637 OMF DEKA D23

CDI INNOVATOR 325D
LCDR MS LONDYN 20L
4264185 WS MISS SUGAR C4

CE	BW	WW	YW	ADG	MCE	MILK	MWW	STAY
9.7	0.5	92.8	147.8	0.35	6.6	20.7	67.0	15.4
DOC	CW	YG	MARB	BF	REA	SHR	\$API	\$TI
14.1	43.8	-0.32	0.30	-0.060	0.97	-0.33	145.7	92.2

lot
31

3 IVF EMBRYOS

LBRS GENESIS G69
GIBBS CULMINATION
4120425 GIBBS 9047G LOUISE Y534

CDI INNOVATOR 325D
LCDR MS LONDYN 20L
4264185 WS MISS SUGAR C4

CE	BW	WW	YW	ADG	MCE	MILK	MWW	STAY
12.4	-0.6	95.1	149.5	0.34	8.3	27.5	75.0	17.1
DOC	CW	YG	MARB	BF	REA	SHR	\$API	\$TI
15.0	55.1	-0.19	0.70	-0.030	0.90	-0.37	176.4	105.2

lot
32

3 IVF EMBRYOS

OMF JOURNEYMAN J24
JWC WESTERN FEEL 354M
4389140 W/C JWC ANGEL 9005G

CDI INNOVATOR 325D
LCDR MS LONDYN 20L
4264185 WS MISS SUGAR C4

CE	BW	WW	YW	ADG	MCE	MILK	MWW	STAY
11.0	0.4	82.7	128.5	0.29	6.9	20.4	61.7	14.4
DOC	CW	YG	MARB	BF	REA	SHR	\$API	\$TI
12.0	38.3	-0.35	0.24	-0.070	0.93	-0.33	137.6	84.7

- The dam of these embryos is the next up and coming donor for Jared Werning Cattle. She was added as an open heifer to his program due to her outstanding phenotype coupled with powerful genetic predictors. The first son of Londyn will be marketed as the feature bull in his upcoming spring sale, JWC Recharge 105N. This son of last year's feature lot in the One and Only, Bridle Bit Recharge K256, will be sought after by any progressive purebred breeder and/or AI stud in the country. She has the power in person and on paper to click with whatever she is mated to.
- OMF Journeyman J24 is the \$110,000 high selling bull from the 2022 Oak Meadow Farms Production Sale. He was the lead off bull in the 2022 NWSS Grand Champion Pen of Three Purebred Bulls, one of the most talked about champion pens in recent years! OMF Journeyman J24 is a homozygous black and homozygous polled Purebred that sets the standard for skeletal quality, performance, and offers unparalleled dimension. His first couple calf crops were highly sought after.
- Gibbs Culmination is the Homozygous Black, Homozygous Polled outcross stud, that combines the performance of his sire with the impeccable maternal legacy of a 11 year old granddam. Top 1% API and TI! He represents unlimited outcross options. He has a maternal pedigree with perfect udder structure, slick haired on fescue forage base, and depth of rib expression well beyond his sire. G+ and ATM Right Choice designations.
- JWC Western Feel 354M is the physical standout OMF Journeyman J24 son from the 2025 Sale Season. In February, he captured the attention of all who viewed him in person. From a breeder's perspective, he may be one of our most anticipated achievements to date. To make a bull with this much stoutness, mass, and density and still have this kind of presence and feature is very hard. So proud and athletic, he marches on an incredible hoof and plants his big hairy legs with ease and authority.
- Buyer will receive three (3) IVF Embryos from each mating with a guarantee of one (1) pregnancy from each mating.
- Jared Werning Cattle, Parkston, SD, Jared and Kassi Werning, Jared (605) 933-1661, Kassi (319) 939-7476

JW



MISS WERNING KP 8543U-2-CLONE - Dam of Lot 33 and 34 embryos.

- Few cows in the Simmental breed have had the impact that Miss Werning KP 8543U has had. Dozens of major herd bulls produced over her productive life and 100's of daughters and descendants put into donor dam status. She is truly a breed icon. So it was logical for her to be cloned to continue on the potent genetic lines she possessed. John Griswold has taken and mated her to his two hottest young Simmental bulls in GCC Night Owl 3104L and TL On the Run 106K. These were the two most popular bulls on display in the yards and present the freshest and most exciting studs that the G- has produced or been involved in. These two matings will be sought after for the proven genes presented on the bottom side of the pedigree coupled with class, power, style and substance that these two Simmental sensations bring to the table.
- Buyer will receive three (3) IVF Embryos from each mating with a guarantee of one (1) pregnancy from each mating.
- Griswold Cattle Co., Stillwater, OK, (405) 372-3300 Office



GCC NIGHT OWL 3104L - Sire of Lot 33 embryos.



TL ON THE RUN 106K - Sire of Lot 34.

lot
33

3 IVF EMBRYOS

ROCKING P PRIVATE STOCK H010
GCC NIGHT OWL 3104L
4284092 BAR CK MS D948 9024G

WAGR DREAM CATCHER 03R
MISS WERNING KP 8543U-2 CLONE
4094137 MISS WERNING 534R

CE	BW	WW	YW	ADG	MCE	MILK	MWW	STAY
14.3	-2.0	60.5	85.1	0.15	6.3	27.7	57.9	16.7
DOC	CW	YG	MARB	BF	REA	SHR	\$API	\$TI
12.0	24.6	-0.42	0.28	-0.060	1.04		142.5	76.0

lot
34

3 IVF EMBRYOS

SECOND CHANCE 601H
TL ON THE RUN 106K
4325400 EC COUNTESS 283F

WAGR DREAM CATCHER 03R
MISS WERNING KP 8543U-2 CLONE
4094137 MISS WERNING 534R

CE	BW	WW	YW	ADG	MCE	MILK	MWW	STAY
13.2	-1.5	55.1	71.1	0.10	5.3	29.9	57.4	13.6
DOC	CW	YG	MARB	BF	REA	SHR	\$API	\$TI
12.0	13.4	-0.48	0.06	-0.070	0.99	-0.29	118.9	66.6

Werning Cattle Co. Embryos



W/C MISS WERNING 964G - Dam of Lots 35, 36, 37A-37C.

- W/C Miss Werning 964G is the dam of the best flush of bulls in W/C history. And that is no small statement considering the results from this storied program. At the 2025 W/C Bull Sale ten (10) Embryo Transplant sons sold for a \$25,000 average, including top-sellers of \$67,500 and \$31,000 that are full siblings to the Lot 35 embryos. This Turnpike daughter is just stunning to look at and has proven to be a great genetic piece to make the kind of cattle their customer's demand. 964G's first natural calf was an excellent Right Now son that sold to Wade Horstman of Parkston, SD for \$20,000.
- Werning Cattle Company, Emery, SD, Dale Werning (605)-661-3625, Scott Werning (605) 682-9610



OMF JOURNEYMAN J24 - Sire of Lot 35.

lot
35

3 IVF EMBRYO

MR SR MIC DROP G1534
OMF JOURNEYMAN J24
3953637 OMF DEKA D23

RUBYS TURNPIKE 771E
W/C MISS WERNING 964G
3729670 W/C MISS WERNING 443B

CE	BW	WW	YW	ADG	MCE	MILK	MWW	STAY
11.1	0.4	79.0	125.8	0.30	5.9	25.0	64.3	15.1
DOC	CW	YG	MARB	BF	REA	SHR	\$API	\$TI
10.4	35.1	-0.37	0.03	-0.070	0.97	-0.34	124.9	77.2

- These are full siblings to that famous flush that included the \$67,500 top-seller and another bull at \$31,000, W/C Atlas selling to Hilltop Simmentals.

lot
36

3 IVF EMBRYO

W/C REVOLUTION 65G
W/C KAISER 240J
3974358 W/C MISS WERNING 751E

RUBYS TURNPIKE 771E
W/C MISS WERNING 964G
3729670 W/C MISS WERNING 443B

CE	BW	WW	YW	ADG	MCE	MILK	MWW	STAY
12.0	-0.5	72.4	112.9	0.26	6.1	30.4	66.4	12.5
DOC	CW	YG	MARB	BF	REA	SHR	\$API	\$TI
8.2	33.5	-0.40	-0.05	-0.060	1.07	-0.29	113.7	72.4

- Full sibling embryos to the \$25,000 W/C Kingpin 621M that sold to Yardley Cattle Company and W/C Real World 7040M to Pembroke Cattle in Oklahoma.



W/C KAISER 240J - Sire of Lot 36.

Werning Cattle Co. Embryos

W/C MISS WERNING 964G PROGENY



W/C STATESMAN 319M



W/C MISS WERNING 357L



W/C KAISER 588M



W/C KINGPIN 621M



W/C KAISER 1478M



W/C ATLAS 6355M

lot
37A

3 IVF EMBRYO

HOOK'S BOZEMAN 8B
MR SR 71 RIGHT NOW E1538
3325668 MISS SR C1538

RUBYS TURNPIKE 771E
W/C MISS WERNING 964G
3729670 W/C MISS WERNING 443B

CE	BW	WW	YW	ADG	MCE	MILK	MWW	STAY
13.8	-1.4	76.0	117.6	0.26	7.6	27.3	65.1	11.5
DOC	CW	YG	MARB	BF	REA	SHR	\$API	\$TI
12.0	29.0	-0.46	0.06	-0.080	1.03	-0.38	126.1	79.7



W/C JOURNEYMAN 7021M

lot
37B

3 IVF EMBRYO

W/C UNITED 956Y
W/C EXECUTIVE ORDER 8543B
2900283 MISS WERNING KP 8543U

RUBYS TURNPIKE 771E
W/C MISS WERNING 964G
3729670 W/C MISS WERNING 443B

CE	BW	WW	YW	ADG	MCE	MILK	MWW	STAY
13.4	-1.7	71.2	108.5	0.24	5.8	25.7	61.1	12.8
DOC	CW	YG	MARB	BF	REA	SHR	\$API	\$TI
8.0	26.4	-0.36	0.07	-0.060	0.90	-0.25	123.6	75.5



W/C HEAVY HITTER 7025N



W/C KAISER 7040M

lot
37C

3 IVF EMBRYO

MR SR 71 RIGHT NOW E1538
W/C REVOLUTION 65G
3644881 W/C MISS WERNING 65D

RUBYS TURNPIKE 771E
W/C MISS WERNING 964G
3729670 W/C MISS WERNING 443B

CE	BW	WW	YW	ADG	MCE	MILK	MWW	STAY
8.9	1.7	83.8	133.7	0.32	5.2	34.2	75.9	11.8
DOC	CW	YG	MARB	BF	REA	SHR	\$API	\$TI
9.9	44.6	-0.35	0.04	-0.070	0.97	-0.33	112.9	78.2

W/C

- 964G's first natural calf was a \$20,000 Right Now son that really started her path to success and got our attention.
- Lots 37A, 37B, 37C - Choice of Sire - MR SR 71 Right Now E1538, W/C Executive Order 8543B, or W/C Revolution 65G
- Buyer will receive three (3) IVF Embryos from each mating with a guarantee of one (1) pregnancy from each mating.
- Werning Cattle Company, Emery, SD, Dale Werning (605)-661-3625, Scott Werning (605) 682-9610

Sullivan Embryos



DARE TO COMPARE - Full sib to Lot 38 embryos.



JSUL MARY IS PROUD 8047F - Dam of Lot 38.



Maternal Legends

SULLIVAN
farms



WHF/JS/CCS WOODFORD J001 - Sire of Lot 40 embryos.



RJ TRUST FUND 212K - Sire of Lot 39 embryos.



FULL SIB TO THE LOT 39 EMBRYOS AND \$19,000 RESERVE CALF CHAMPION IN LOUISVILLE.



4/B MISS HONEY BUTTER 08J - Dam of Lots 39, 40.

lot
39

4 REVERSE SORT SEXED FEMALE IVF EMBRYOS

W/C BANKROLL 811D
RJ TRUST FUND 212K
4147173 HARA'S KIM KARDASHIAN 1C

W/C RELENTLESS 32C
4/B MISS HONEY BUTTER 08J
3964485 **4/B MISS SECRET WEAPON 41D**

CE	BW	WW	YW	ADG	MCE	MILK	MWW	STAY
9.1	3.6	76.2	103.7	0.17	4.2	20.3	58.3	7.8
DOC	CW	YG	MARB	BF	REA	SHR	\$API	\$TI
10.1	31.4	-0.40	0.11	-0.080	0.93	-0.25	103.2	72.4

- The dam of lots 39 and 40 sexed heifer embryos, 4/B MISS HONEY BUTTER 08J, was named Supreme Champion Female and Champion Simmental Female at the 2023 Cattlemen's Congress after commanding \$280,000 in the Griswold Cattle Co. Sale. The grandam, 4/B MISS SECRET WEAPON 41D continues to leave her mark in the Simmental breed as one of the great Secret Weapon daughters producing not only the dam of 39 and 40, but also two daughters by Relentless named Champion and Reserve Champion Spring Heifer Calves at the American Royal, and 4B Honey Bun 50H who sold for \$62,000 at Griswold Cattle Co. and went on to be named 5th Overall Purebred Heifer at the AJSA Classic and Grand Champion at the 2021 American Royal.
- Buyer will receive four (4) Reverse Sort Sexed Female IVF Embryos from each mating with a guarantee of one (1) pregnancy from each mating.
- Sullivan Farms, Dunlap, Iowa, Josh Elder (402) 650-1380

lot
38

4 REVERSE SORT SEXED FEMALE IVF EMBRYOS

W/C RELENTLESS 32C
RECKONING 711F
3553633 RWA KRISHA-ET

HPF QUANTUM LEAP Z952
JSUL MARY IS PROUD 8047F
3465147 **JBSF PROUD MARY**

CE	BW	WW	YW	ADG	MCE	MILK	MWW	STAY
7.9	2.1	74.0	102.7	0.18	4.9	15.8	52.7	10.0
DOC	CW	YG	MARB	BF	REA	SHR	\$API	\$TI
6.4	20.2	-0.31	0.07	-0.050	0.73	-0.27	106.0	71.1

- These are none other than full sibling sexed female embryos to Dare 2 Compare He is flawless in his design with outstanding structural soundness. Big bodied with a bold and robust rib cage and outstanding underline. The way he carries himself on the moves and his high neck set is next level good!! His mother Mary is Proud 8074 is arguably Proud Mary 317C greatest daughter. She Started her dominate show career at the 2018 NAILE where she was selected Reserve Overall in the Open Show as a calf and then was selected as Grand Champion Purebred at the 2019 FWSS. In the Summer of 2019, she was selected as the Grand Champion Female in the Jr. Sweepstakes show in Louisville, Kentucky and was also selected as the Grand Champion at the American Royal. Jump in on the excitement of one of the most exciting bulls in the breed with his full sisters!
- Buyer will receive three (4) Reverse Sort Sexed Female IVF Embryos a guarantee of one (1) pregnancy from each mating.
- Sullivan Farms, Dunlap, Iowa, Josh Elder (402) 650-1380

lot
40

4 REVERSE SORT SEXED FEMALE IVF EMBRYOS

EGL FIRESTEEL 103F
WHF/JS/CCS WOODFORD J001
4068398 WHF SUMMER 365C

W/C RELENTLESS 32C
4/B MISS HONEY BUTTER 08J
3964485 **4/B MISS SECRET WEAPON 41D**

CE	BW	WW	YW	ADG	MCE	MILK	MWW	STAY
11.5	2.0	81.0	111.3	0.19	3.2	19.7	60.2	14.1
DOC	CW	YG	MARB	BF	REA	SHR	\$API	\$TI
11.4	26.1	-0.29	0.25	-0.060	0.69	-0.32	129.5	79.9



W/C HARRELL ANGEL 7110E - Granddam of Lot 41 and 42 embryos.



SO REMEDY 7F - Sire of Lot 41 embryos.



RECKONING 711F - Sire of Lot 42 embryos.



FULL SIB TO THE LOT 41 EMBRYOS.



FULL SIB TO THE LOT 42 EMBRYOS.



lot 41 4 REVERSE SORT SEXED FEMALE IVF EMBRYOS

HPF/HILL UPRISING C104
SO REMEDY 7F
3419044 B&K CREAM SODA 8D

WLE COPACETIC E02
DTC JWC ANGEL 124J
4038123 W/C HARRELL ANGEL 7110E

CE	BW	WW	YW	ADG	MCE	MILK	MWW	STAY
11.7	1.7	80.3	122.7	0.27	5.1	18.2	58.2	8.6
DOC	CW	YG	MARB	BF	REA	SHR	\$API	\$TI
10.4	33.3	-0.47	-0.13	-0.100	0.97		103.5	72.8

lot 42 4 REVERSE SORT SEXED FEMALE IVF EMBRYOS

W/C RELENTLESS 32C
RECKONING 711F
3553633 RWA KRISHA-ET

WLE COPACETIC E02
DTC JWC ANGEL 124J
4038123 W/C HARRELL ANGEL 7110E

CE	BW	WW	YW	ADG	MCE	MILK	MWW	STAY
9.1	2.3	75.8	105.6	0.19	4.9	14.9	52.8	12.3
DOC	CW	YG	MARB	BF	REA	SHR	\$API	\$TI
6.6	16.5	-0.39	0.09	-0.060	0.88		112.4	72.2

- Lot 41 is sired by SO Remedy 7F, the record setting Simmental bull that sold for \$530,000 in the 2021 edition of Embryos on before being selected as the 2021 Cattlemen's Congress
- Grand Champion Simmental Bull. Lot 42 is sired by the Champion % Bull at both the 2019 NAILE & 2020 NWSS! This ultra-complete Relentless son has been a very popular choice to continue the dominance of his sire.
- The donor dam, DTC JWC ANGEL 124J, was the \$30,000 selection of Sara Sullivan from a past Boyert/Core Spring Sale. The grandam, W/C Harrell Angel 7110E is another proof positive indicator of the reliability of the W/C Relentless 32C combination with W/C Angel 2870Z. She was competitive during the 2019 show season for Sara Sullivan where she was selected as the AJSA National Classic 3rd Overall Purebred Heifer. Now in production, 7110E has emerged as one of the absolute most consistent and reliable producing daughters of the great 2870Z. The famous third dam, W/C Miss Angel 2870Z, is the foundation matriarch of Jared Werning Cattle and over 115 direct progeny recorded with the American Simmental Association. W/C Angel 2870Z was a National Champion for JWC and Harrell, however her ventures on the tanbark were only the beginning of the story she was set to write.
- The list of maternal siblings that lead breeding programs across North America is impressive, you will find females like W/C Angel 7113E, W/C Angel 7114E, W/C Right Now 1198J, and W/C Red Bird 269J.
- Heifer calves out of both matings were featured in the Pembroke Sale and are pictured and sold for \$15,000, \$15,000, \$20,000 AND \$30,000.
- Buyer will receive four (4) Reverse Sort Sexed Female IVF Embryos from each mating with a guarantee of one (1) pregnancy from each mating.
- Sullivan Farms, Dunlap, Iowa, Josh Elder (402) 650-1380

Sullivan Embryos



JSUL OH BOY REBA 0267G - Dam of Lot 43-45 embryos.



TJSC H-TOWN 131L - Sire of Lot 43.



WHF/JS/CCS WOODFORD J001 - Sire of Lot 45.

FULL SIBS TO THE LOT 44 EMBRYOS.



2025 CHAMPION PUREBRED IN DENVER.



SOLD FOR \$57,000 AT MATERNAL LEGENDS.



SOLD FOR \$61,000 AT MATERNAL LEGENDS.



SOLD FOR \$79,000 AT MATERNAL LEGENDS.

lot 43 4 REVERSE SORT SEXED FEMALE IVF EMBRYOS

STCC TECUMSEH 058J
TJSC H-TOWN 131L
4274275 TJSC DIAMOND 312H

THSF LOVER BOY B33
JSUL OH BOY REBA 0267G
3803821 DAF REBA C85

CE	BW	WW	YW	ADG	MCE	MILK	MWW	STAY
5.7	4.3	81.3	120.6	0.25	2.6	22.4	62.9	11.0
DOC	CW	YG	MARB	BF	REA	SHR	\$API	\$TI
10.1	34.7	-0.38	0.10	-0.080	0.86	-0.37	107.1	74.5

lot 45 4 REVERSE SORT SEXED FEMALE IVF EMBRYOS

EGL FIRESTEEL 103F
WHF/JS/CCS WOODFORD J001
4068398 WHF SUMMER 365C

THSF LOVER BOY B33
JSUL OH BOY REBA 0267G
3803821 DAF REBA C85

CE	BW	WW	YW	ADG	MCE	MILK	MWW	STAY
10.2	2.1	85.6	127.5	0.26	4.4	22.1	64.8	15.5
DOC	CW	YG	MARB	BF	REA	SHR	\$API	\$TI
13.7	38.0	-0.26	0.23	-0.060	0.70	-0.38	131.5	82.1

lot 44 4 REVERSE SORT SEXED FEMALE IVF EMBRYOS

W/C RELENTLESS 32C
JSUL SOMETHING ABOUT MARY 8421
3565879 JBSF PROUD MARY

THSF LOVER BOY B33
JSUL OH BOY REBA 0267G
3803821 DAF REBA C85

CE	BW	WW	YW	ADG	MCE	MILK	MWW	STAY
8.4	2.2	79.3	123.6	0.28	4.5	15.8	55.3	10.0
DOC	CW	YG	MARB	BF	REA	SHR	\$API	\$TI
11.0	44.9	-0.29	0.05	-0.060	0.87	-0.29	110.0	74.6

Maternal Legends

SULLIVAN
farms

- Sullivan Farms dug deep in their tank to bring us as many current and high-quality matings as we could fit in this sale. JSUL OH BOY REBA 0267G, was the 2021 American Royal Supreme Champion Female for Sara Sullivan. Her dam, DAF Reba C85 herself was the 2016 Grand Champion Percentage Simmental Female in the Jr. Show at the NWSS and went on to be the Reserve Supreme at the 2016 Iowa Beef Expo as well as 5th overall female at the National Jr. Heifer Show. The list of accolades that stem from this cow family is too many to mention.
- Lot 43 is sired by TJSC H-Town 131L. He was an undeniable crowd favorite while displayed on the hill in Denver at the 2024 National Western Stock Show and went on to win the Grand Champion Purebred Bull show!
- Lot 44 is sired by Sam, making these full sisters to the Open and Junior Show Champion Female at the 2025 NWSS.
- Lot 45 is by Woodford, and this mating has already produced champions from Minnesota to Texas.
- Buyer will receive four (4) Reverse Sort Sexed Female IVF Embryos from each mating with a guarantee of one (1) pregnancy from each mating.
- Sullivan Farms, Dunlap, Iowa, Josh Elder (402) 650-1380

lot
46

4 REVERSE SORT SEXED FEMALE IVF EMBRYOS

BNWZ DIGNITY 8017
UDE NEW HEIGHTS 62/87
4464763 FCF PHYLLIS 532

WLE COPACETIC E02
JSUL MAPLE'S MARY 1013J
3939213 JBSF PROUD MARY

CE	BW	WW	YW	ADG	MCE	MILK	MWW	STAY
8.7	0.8	82.3	130.0	0.30	5.6	10.8	51.8	8.9
DOC	CW	YG	MARB	BF	REA	SHR	\$API	\$TI
9.3	39.5	-0.06	0.21	0.010	0.64		106.9	75.3

• Here is an opportunity to get in on the ground floor of this exciting mating. JSUL Maples' Mary is owned by Lee Simmental Farms & Shoal Creek Land & Cattle. This donor's career has just started and she has already produced some high sellers with her mating to LLSF Dauntless in last year's open female sale with one heifer bringing \$30,000 and another bringing \$17,500. Ude New Heights is one of the hottest new Angus sires in the country and we feel this mating should produce some awe inspiring phenotypically perfect females. Offering 4 IVF Sexed Female embryos guaranteeing one pregnancy if implanted by a certified embryologist.

• Lee Simmental, Columbia, MO, Jerry Lee (573) 881-5629



JSUL MAPLE'S MARY 1013J - Dam of Lot 46 embryos.

Lee Simmental Farms



UDE NEW HEIGHTS 62/87 - Sire of Lot 46 embryos.



MATERNAL SIB TO THE LOT
46 EMBRYOS.



MATERNAL SIB TO THE LOT
46 EMBRYOS.

lot
47

3 REVERSE SORT SEXED FEMALE IVF EMBRYOS

KRJ DAKOTA OUTLAW G974
NEXT LEVEL
3981484 KRDL CAEDENCE C37

HARKERS/JS DOMINATION
JS FLIRT A-WAY 59Y
2590071 JS FLATOUT FLIRTY 46T

CE	BW	WW	YW	ADG	MCE	MILK	MWW	STAY
3.5	5.8	81.2	121.6	0.25	2.5	25.9	66.4	11.0
DOC	CW	YG	MARB	BF	REA	SHR	\$API	\$TI
8.2	34.4	-0.49	-0.13	-0.100	1.08	-0.31	90.2	67.5

• These special embryos are maternal siblings to one of the most dominant show heifers of all time, "Boots". "Boots" was the 2015 AJSA National Classic Grand Champion Owned Heifer, 2015 American Royal Grand Champion Purebred Simmental Heifer, 2015 NAILE Grand Champion Purebred Simmental Heifer, and conquer her Triple Crown run when she was slapped Grand Champion on "The Hill" at the National Western Stock Show! A maternal sister to the embryos, Boss Lake Flirt A Way 740E, commanded a \$76,000 hammer price in the 2023 Griswold Cattle Company Classic Female Sale. This cow is timeless and her progeny to continue to be sought after year after year at JS Simmentals. Next Level provides a unique build with a world of center body shape and overall muscle from end to end. He does all that with a super cool look while providing flexibility in his movement. Next Level also provides somewhat of an outcross pedigree to most popular sire lines giving him lots of versatility in both the purebred and composite sectors that have made his first progeny very marketable.

• Buyer will receive (3) IVF Sexed Female Embryos with a guarantee of 1 pregnancy.
• JS Simmentals, Prairie City, IA, Jay Steenhoek (515) 238-5938, Derek Counsell (641) 715-4138



JS FLIRT A WAY 59Y - Dam of Lot 47 embryos.



NEXT LEVEL - Sire of Lot 47 embryos.





VCL COUNTESS 255F - Dam of Lot 48 embryos.

lot
48

4 IVF EMBRYOS

BRIDLE BIT GPS H078
BRIDLE BIT MISS K261
4058277 BRIDLE BIT MISS E704

MR CCF 20-20
VCL COUNTESS 255F
3454250 HCCO COUNTESS 412D

CE	BW	WW	YW	ADG	MCE	MILK	MWW	STAY
10.3	-0.7	72.6	99.9	0.17	5.7	14.8	51.0	15.4
DOC	CW	YG	MARB	BF	REA	SHR	\$API	\$TI
7.3	19.4	-0.24	0.24	-0.040	0.58	-0.40	133.2	77.8

• VCL Countess 255F is a past \$70,000 graduate of the Customer Appreciation Sale, hosted by Hartman Cattle Co. She has made a solid name for herself in the donor pen at Vogler Cattle Company. "Miley" has since sold for 1/2 interest to Aces Wild Ranch for \$100,000 and she is a full sister to the popular VCL Foresight who is in turn the sire of the \$620,000 STCC Tecumseh 058J. In her early days she was campaigned by Coby Sinclair and was selected as the 2018 IN State Fair Grand Champion Simmental and 4th Overall Junior Breeding Heifer.

• Vogler Cattle Co., Ashland, NE, Les Vogler (402) 450-2340, Loren Vogler (402) 432-9070



BRIDLE BIT RECHARGE

Vogler
Cattle Co.



MECC ELLIE 34H - Dam of Lot 49-51 embryos.



SO REMEDY 7F - Sire of Lot 49 embryos.



VCL FORESIGHT - Sire of Lot 50 embryos.



OMF EPIC E27 - Sire of Lot 51.

lot
49

4 IVF EMBRYOS

HPF/HILL UPRISING C104
SO REMEDY 7F
3419044 B&K CREAM SODA 8D

THOR 503C
MECC ELLIE 34H
3772906 MECC MISS 20-20

CE	BW	WW	YW	ADG	MCE	MILK	MWW	STAY
10.2	2.3	83.1	124.3	0.26	5.5	23.2	64.7	7.3
DOC	CW	YG	MARB	BF	REA	SHR	\$API	\$TI
13.7	43.3	-0.38	0.00	-0.080	0.97	-0.29	105.1	76.6

lot
51

4 IVF EMBRYOS

WS ALL-AROUND Z35
OMF EPIC E27
3317371 OMF TIME LESS B100

THOR 503C
MECC ELLIE 34H
3772906 MECC MISS 20-20

CE	BW	WW	YW	ADG	MCE	MILK	MWW	STAY
11.0	1.1	86.5	125.3	0.25	6.9	24.1	67.3	11.2
DOC	CW	YG	MARB	BF	REA	SHR	\$API	\$TI
13.1	39.4	-0.31	0.21	-0.050	0.95	-0.36	127.7	85.0

• These embryo's maternal brother, VCL Pioneer 548 21L, was featured in the 2024 One & Only Sale and sold for \$21,000 as the second high-selling bull to Mike Moser of South Dakota. \$12,500.00 VCL STRIKER 47M was a feature in last year's sale and brought \$12,500. The donor dam, MECC Ellie 34H was a past \$110,000 sale feature at Hartman Cattle Co. She is sired by the calving ease specialist, Thor 503C and backed by the influence of the great MR CCF Vision and from a Sitz Upward 307R dam.

- Buyer will receive four (4) IVF Embryos with a guarantee of one (1) pregnancy per mating.
- Vogler Cattle Co., Ashland, NE, Les Vogler (402) 450-2340, Loren Vogler (402) 432-9070

lot
50

4 IVF EMBRYOS

MR CCF 20-20
VCL FORESIGHT
3506652 HCCO COUNTESS 412D

THOR 503C
MECC ELLIE 34H
3772906 MECC MISS 20-20

CE	BW	WW	YW	ADG	MCE	MILK	MWW	STAY
7.7	3.4	84.1	117.3	0.21	4.0	22.0	64.0	9.1
DOC	CW	YG	MARB	BF	REA	SHR	\$API	\$TI
11.8	34.3	-0.39	0.22	-0.070	1.00	-0.35	114.3	80.3

Shipwreck and Single J Embryos



BLC1 EVELYN 476E - Dam of Lot 52 embryos.



NEXT LEVEL - Sire of Lot 52 embryos.

lot
52

3 IVF EMBRYO

NEXT LEVEL KRJ DAKOTA OUTLAW G974

3981484 KRDL CAEDENCE C37

W/C EXECUTIVE ORDER 8543B

BLC1 EVELYN 476E

3308244 WAGR MELODY 5076C

CE	BW	WW	YW	ADG	MCE	MILK	MWW	STAY
6.2	3.2	82.8	119.0	0.23	3.6	22.3	63.6	12.4
DOC	CW	YG	MARB	BF	REA	SHR	\$API	\$TI
9.6	28.2	-0.45	0.03	-0.090	0.96	-0.27	109.4	75.3

- BLC1 Evelyn 476E - This female is from a very productive daughter of WS Pilgrim H182U from the CK Wager donor, 3C Melody M668 BZ. Her full sister, SWC Gwendolyn 376G, would be the dam of the \$85,000 SWC Red Wave 376J and commanded a \$13,000 hammer price in the 2023 Spring Sort as the selection of Circle N Ranch of Texas. This red hided female only gets better with age like most red wines and has proven herself to exceed quality standards in production with either sex. The sheer power, genuine skeletal width, center body dimension and substance of bone she transmits into her stock gives merit for herd sire production with certainty. A son of
- KCC1 Countertime 872H, MR KCC1 Long Distance 476L was the \$18,000 selection of M&E Cattle Co. of North Dakota in the 2024 Kearns Cattle Company Bull Sale for Zach and Company. Next Level has taken the breed by storm in his short tenure of use with countless high sellers and champions from coast to coast and border to border. The cattle are honest, bold, ripe with shape, and are built to maintain look and presence in any pen in the country. This youthful sire selection is proving himself to sire cattle that have the necessary performance, growth, substance, and product suitable for the high industry standards and expectations for today's marketplace. We expect nothing less than red hided excellence with this genetic blend to 476E with the high probability of blazed faced progeny. Tie in, tie on, but do not overlook the opportunity to have red cattle with substance, density, and maternal value.
- Buyer will receive (3) embryos with a guarantee of (1) pregnancy if work is performed by a licensed and certified technician.
- Shipwreck Cattle Co., Grandview, TX, Jered Shipman (806) 983-7226

lot
53

3 REVERSE SORT SEXED FEMALE IVF EMBRYOS

4/B DYNAMO
BOWJ MANIFEST 985M
4435312 HCCO COUNTESS 985F

LKCC BOLD VENTURE 194F
CONLEY SHEZA STAR 168L
4231225 CONLEY SHEZA STAR D3

CE	BW	WW	YW	ADG	MCE	MILK	MWW	STAY
7.4	3.0	74.5	98.1	0.15	3.0	17.9	55.0	10.6
DOC	CW	YG	MARB	BF	REA	SHR	\$API	\$TI
9.8	22.9	-0.35	-0.01	-0.070	0.72		100.0	68.2

- The famous dam of this donor, Conley Sheza Star D3, is the \$120,000 high-selling Simmental donor dam from the historic Conley Cattle Simmental Dispersion that went to Aces Wild Lindskov's LT Ranch. She is the dam of the \$100,000 Conley High Rise F3, a member of the illustrious herd sire battery at Hartman Cattle Company. Another son of D3 is the impressive Conley Loud & Heavy 410J, the \$25,000 sire that was selected by Volk Livestock of Missouri. One of the most famous daughters of Conley Sheza Star D3 is Conley Sheza Star F912, the 2020 Fort Worth Stock Show Reserve Grand Champion Purebred Simmental Heifer that continued her winnings ways when she was slapped Grand Champion Purebred Simmental Heifer at the Oklahoma Youth Expo, the world's largest youth livestock show! Last year a son of D3, CONLEY S/S CREED K138, was a feature in the NWSS One & Only Simmental Sale and went on to be the Reserve Champion Purebred Bull at that show in the following days.
- Selling three (3) Reverse Sort Sexed Female IVF Embryos with a guarantee of one (1) pregnancy.
- Single J Ranch, Bushnell, FL, Joe Sremba (352) 258-2244



CONLEY S/S CREED K138 - Son of Lot 53 dam. A \$15,000 graduate of the 2025 sale that was also named Reserve Champion Purebred Simmental Bull on the hill.



CONLEY SHEZA STAR D3 - Dam of Lot 53 embryos.



BOWJ MANIFEST 985M - Sire of Lot 53 embryos.



SFI IM A FLIRT F16 - Dam of Lot 54-56 embryos.



HPF QUANTUM
LEAP Z952 -
Sire of Lot 54
embryos.



TL REVENANT 35 -
Sire of Lot 55.



W/C RELENTLESS 32C -
Sire of Lot 56.



FULL SIB TO THE LOT 55 EMBRYOS THAT WAS
CHAMPION SIMMENTAL FEMALE IN BOTH
RINGS AT THE 2025 KS BEEF EXPO.



lot 54 3 REVERSE SORT SEXED FEMALE IVF EMBRYOS

HTP/SVF DURACELL T52
HPF QUANTUM LEAP Z952
2649657 RP/MP RIGHT TO LOVE 015U

LLSF PAYS TO BELIEVE ZU194
SFI IM A FLIRT F16
3442325 SFI MISS ME O MY

CE	BW	WW	YW	ADG	MCE	MILK	MWW	STAY
9.4	1.7	81.6	119.6	0.24	6.0	20.5	61.2	5.8
DOC	CW	YG	MARB	BF	REA	SHR	\$API	\$TI
8.6	42.6	-0.35	0.17	-0.080	0.88	-0.41	110.2	80.0

- We are excited to present frozen genetics from SFI I'm A Flirt F16 "Flirty." She made a remarkable debut by winning the Kansas State Fair Junior Calf Champion title and continued to secure victories afterward. Her final appearance, "FLIRTY," was crowned Supreme Simmental Female at the 2020 Fort Worth Stock Show.
- The sire of this embryo package is HPF Quantum Leap Z952, whose progeny have accumulated numerous titles and delivered exceptional performance in herds across the United States.
- This year's Schaake Farms Heritage Sale showcased two granddaughters of HPF Quantum Leap Z952, sired by WLE Copacetic E02.
- If you're in search of the next show heifer or looking to elevate your cow herd genetics, the combination of Schaake Farms' maternal strength and the paternal influence of HPF Quantum Leap Z952 will surely meet your needs.

lot 55 3 REVERSE SORT SEXED FEMALE IVF EMBRYOS

TL LEDGER
TL REVENANT 35
3829823 RJ MISS ELLIE 7052E

LLSF PAYS TO BELIEVE ZU194
SFI IM A FLIRT F16
3442325 SFI MISS ME O MY

CE	BW	WW	YW	ADG	MCE	MILK	MWW	STAY
7.7	2.0	72.9	104.3	0.20	4.6	18.7	55.0	9.0
DOC	CW	YG	MARB	BF	REA	SHR	\$API	\$TI
6.7	37.3	-0.29	0.16	-0.060	0.81	-0.34	109.0	73.2

- Don't miss this opportunity to invest in elite genetics! Wild Leef Farms is excited to offer an exceptional embryo package from our distinguished matriarch, SFI "I'm A Flirt F16," known as "Flirty," and sired by TL Revenant 35—the standout \$100,000 feature from the 2021 Hartman Cattle Company Bull Sale.
- TL Revenant is quickly rising as a prominent sire within the Simmental breed. By blending the maternal excellence of Schaake Farms with the pedigree of TL Revenant 35, bred by Tree Lane Farms, you are guaranteed high-performing offspring that will enhance your herd.
- Seize this extraordinary chance to elevate your breeding program today!

lot 56 3 REVERSE SORT SEXED FEMALE IVF EMBRYOS

YARDLEY UTAH Y361
W/C RELENTLESS 32C
3045559 MISS WERNING KP 8543U

LLSF PAYS TO BELIEVE ZU194
SFI IM A FLIRT F16
3442325 SFI MISS ME O MY

CE	BW	WW	YW	ADG	MCE	MILK	MWW	STAY
7.8	2.3	73.3	103.3	0.19	5.2	20.6	57.1	9.2
DOC	CW	YG	MARB	BF	REA	SHR	\$API	\$TI
8.3	31.7	-0.35	0.18	-0.060	0.94	-0.38	110.3	73.9

- The guesswork has been eliminated in this exceptional mating! Wild Leef Farms is excited to offer embryos from an elite female bred by Schaake Farms, known as SFI "I'm A Flirt F16," referred to as "Flirty."
- This remarkable female is paired with the renowned Werning W/C Relentless 32C, ensuring an ideal combination for producing outstanding Relentless has firmly established himself as one of the leading sires in the Simmental industry, becoming a household name for breeders. His daughters have consistently dominated the competition, sweeping up Grand Champion titles at nearly every major show across the nation.
- This pairing has the potential to yield cattle not only heavy muscled but also long-sided and stoutly constructed. These traits are a testament to the quality and durability that Sim-Influenced cattle bring to the cattle business, ensuring their performance and marketability for years to come.
- An extraordinary opportunity to acquire a genetic package like this is not to be missed, as the resulting progeny has potential show ring and herd building success.
- Buyer will receive three (3) Reverse Sort Sexed Female IVF Embryos with a guarantee of one (1) pregnancy per mating.
- Wild Leef Farms, Edgerton, MO, Doyle Leefer (402) 699-7300



EXAR RITA 8713 - Dam of Lot 57 embryos.

lot
57

3 CONVENTIONAL EMBRYOS

HOOK'S EAGLE 6E
WAGR PATRIOT 1008J
3961833 WAGR MS INNOVATOR 9048G

EXAR MONUMENTAL 6056B
EXAR RITA 8713
4440952 G A R SUNRISE 1482

CE	BW	WW	YW	ADG	MCE	MILK	MWW	STAY
10.8	-0.2	96.3	154.8	0.37	7.5	24.4	72.8	13.1
DOC	CW	YG	MARB	BF	REA	SHR	\$API	\$TI
14.5	55.8	-0.19	0.75	-0.040	0.91		156.7	101.1

- A grand opportunity to create valuable 1/2 bloods by the \$30,000 powerhouse selection of Wagonhammer Ranches from the CK/Wager Bull Sale, WAGR Patriot 1008J and out of a dam straight from the EXAR Big Event, EXAR Rita 8713. She made abig name in the Angus circles with her nearly \$615,000 of progeny sales, headlined by the \$380,000 top-selling female of the 2022 Big Event selected by Spruce Mountain and Triple AAA and EXAR Cash, a son that was the \$60,000 two-thirds interest second high-selling bull of the 2024 to Express Spring Bull Sale selected by Basin and Meyer. Her dam topped a past Big Event at \$90,000 for half interest and has generated \$939,550 in progeny sales at Express with an average of \$21,113 on 29 daughters sold. From a real world perspective her average progeny birth ratio of 3@98, average progeny IMF ratio of 16@116 and progeny REA ratio of 16@101.

- Wills Farms, Alliance, NE, Heath Wills (308) 760-7411



WAGR PATRIOT 1008J - Sire of Lot 57 embryos.

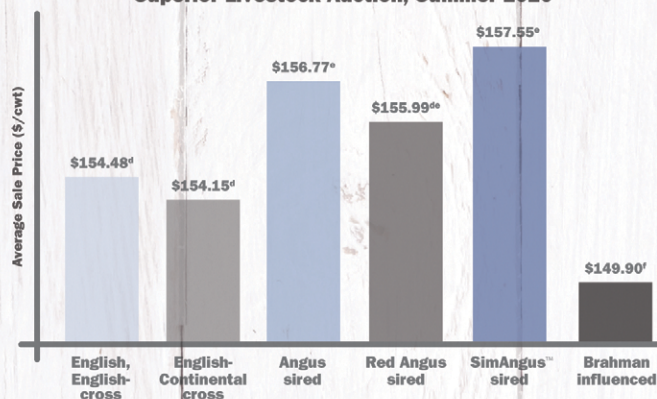


MORE PER HEAD PERIOD



SimGenetics
PROFIT THROUGH SCIENCE
American Simmental Association

EFFECT OF SIRE BREED ON SALE PRICE OF BEEF STEER CALVES Superior Livestock Auction, Summer 2020^c



SimAngus™-sired steer calves sold through Superior Livestock Auction in summer 2020 earned **more at sale time** than all other calves.^b

It's no wonder the percentage of **SimAngus™** calves marketed through the industry's largest video auction has grown **eightfold** since 2010.

Want low-risk, high-potential calves with earning potential?

STAND STRONG SIMMENTAL

406-587-4531 • simmental.org

^a For lots of 50 head or more. ^b Kansas State University, December 2020, Superior Livestock Auction data analysis of 3,280 lots, 394,900 head of beef calves marketed during summer 2020. ($P < .0001$)
^c Lots that qualified for breed-related programs were excluded from the model due to potential confounding effects with sire breed analysis and, for many, few lots in the data.
^{d, e, f} Means without a common superscript differ ($P < .05$). Lots of calves in breed-identified groups were sired by bulls from the respective breeds and out of dams with no Brahman influence.



4889 Barton Road
Loomis, CA 95650

Presorted
First Class
US Postage
PAID
SlateGroup

ONE AND ONLY *simmental sale*

SUNDAY. **JANUARY 18.** 2:00 PM MST
AT THE HISTORIC NATIONAL WESTERN COMPLEX

