



ANNUAL PRODUCTION SALE

THURSDAY, FEBRUARY 5, 2026

ST. CHARLES, MN 1:00 P.M.

# WE WELCOME YOU

First and foremost, thank you for taking the time to read through and view our catalog—we truly appreciate your continued interest and support. As I put the finishing touches on the catalog, we are excited to announce the arrival of our fourth child, Sterling Radke Kaehler, born December 30, 2025. With this exciting new chapter, we made the decision to take a year away from exhibiting cattle at the National Western Stock Show. It will be one of the few years we haven't made the trip, and we truly can't wait to get back.

With that being said, we have been extremely blessed with a great year. We had ample rain and heat, giving the grass, crops, cattle and kids every opportunity to thrive. The markets across all classes of cattle have remained exceptionally strong. It truly is a great time to be in the cattle business.

Once again, we are extremely excited to offer this set of cattle for your appraisal. These are the kind of bulls and bred heifers we have spent years working toward, and we cannot wait to see what they will do in your operation. We want to extend a heartfelt thank-you to all of our customers and friends—without you, none of this would be possible. The phone calls, connections, and lifelong relationships we have built with you are a driving force behind why we continue to push ourselves and improve our program. Thank you.

As we brought the bulls in to start torching, I was genuinely impressed with them as a whole. Every bull has an excellent set of feet and legs, the right look and design, and the traits needed to work for a wide variety of operations. If you are looking for bulls to build high-quality replacement females, we have them. If you sell your calves by the pound, we have bulls that will get you top dollar with low inputs. If you retain ownership to harvest, we have bulls that will help you hit premium grades on the rail. And if you are looking to raise show calves, there are bulls here that will get that done too. There is truly a bull in this group for every program.

Going through the bred heifers, it was extremely difficult to let them go. They are what we believe to be one of the deepest and best sets we have ever raised, and we feel the quality shines through. Whether you are looking for a future donor or simply wanting to inject proven, solid genetics into your herd, now is the time to invest. With cow numbers low nationwide, it is a great opportunity to expand. You will also notice that we bred the majority of the younger heifers near the end of May and into early June to allow them additional time to grow.

This operation would not be possible without the support and help we are blessed with. Craig Shaufler has been with us for three years and continues to go above and beyond. My dad and mom, Ralph and Mena, were the ones who inspired my ambition and pushed me to be better every day. They step in wherever needed—from kids to cattle—and for that, I am forever grateful. Lastly, my wife Shelby. She is truly the blessing that keeps our family and our operation moving forward. She is the driver—not on the roads, but in our home and in our business—making sure we stay on track and follow through. She is the one who does it all without being asked. We warmly invite you to stop by the farm anytime leading up to sale day, Thursday, February 5th. Come walk through this phenomenal set. Thank you again for your continued support.

## K-LER CATTLE

*The Kaehlers*



Ralph & Mena



Cliff, Bailee, Phenix, & Devereux



Seth, Shelby, Creed, Colt, Haven, & Sterling



Welcome Sterling Radke Kaehler











## SALE LOCATION:

23913 County Road 39 | St. Charles, MN 55972

## SALE DAY CONTACTS:

Seth Kaehler ..... (507) 272-5403  
Ralph Kaehler ..... (507) 269-5721  
Craig Schaufler ..... (507) 438-3878  
Paul Hill ..... (417) 849-6851  
Jake Smith ..... (360) 477-9430

## SALE MANAGEMENT:

Innovation AgMarketing, LLC

Graham Blagg ..... (530) 913-6418  
Jered Shipman ..... (806) 983-7226  
Tim Anderson ..... (605) 682-9343

## SALE CONSULTANTS:

Jeremie Ruble ..... (406) 581-7940  
Thomas Lundy ..... (502) 471-0354  
Will Bollum ..... (507) 244-0833  
ASA Rep., Bert Moore ..... (701) 541-5035  
Adam White ..... (608) 732-8449  
Kade Christensen ..... (712) 304-1927

## RING STAFF:

Mitchell Armitage ..... (405) 641-9438  
Tom Rooney ..... (515) 491-6025

## BROADCAST:

We will offer online bidding through both **DVAUCTION.COM** and **CCI.LIVE** this year. We recommend visiting the websites at least 24 hours in advance of the sale to register to bid.

Justin Dikoff, DV Auction ..... (605) 290-0635  
Wyatt Durst, CCI.Live ..... (785) 541-0904

## CREDITS:

Adam White, Sale Photos & Videos ..... (608) 732-8449

## TERMS & CONDITIONS:

Terms of sale are cash or check payable immediately upon conclusion of the sale and before animals are removed.

## HOTEL ACCOMMODATIONS:

approx 20 miles from the farm

Numerous hotels are available in Rochester MN

Country Inn & Suites by Radisson ..... (507) 473-4804  
Rochester (South), MN

Candlewood Suites, an IHG Hotel ..... (507) 512-1696  
Rochester Mayo Clinic Area

Hampton Inn; Rochester (South), MN .... (507) 287-9050

## TRUCKING:

Dick Coleman ..... (765) 461-0954

Nathan Jensen ..... (503) 812-2958

Craig Kaisand ..... (641) 891-9666

Free delivery to customers within a 350-mile radius of St. Charles, Minnesota. K-LER Cattle covers the first \$200 trucking elsewhere in the United States. \$100 discount per animal if you haul home day of sale.

## SEMEN INTEREST:

Seller retains 1/3 semen interest in all bulls selling unless otherwise noted or announced from the auction block. If buyer would like to own 100% of the semen share in the bull then they will need to add 1/4 to the purchase price. If that were to happen KLER Cattle would like 30 units of semen for in herd use only.

## HALF EMBRYO INTEREST:

The seller will retain a half embryo interest in the designated lots, as noted in the catalog. The seller and buyer will either split embryos equally at the tank or alternate flushes. Possession of the animal will remain with KLER Cattle unless an alternative arrangement is made with the new partner. The resulting natural calf will be owned entirely by the party managing the animal and covering its day-to-day expenses.

## RISK:

Each animal becomes the risk of the purchaser for loss or injury as soon as sold. We strongly recommend a mortality insurance policy be taken out on any animal left to be wintered. Any bulls left past April 1, 2026 will incur a \$5/Day feed charge.

## LIABILITY:

Neither owners nor sale management assume any liability for accidents or injury that may occur to the animal after it is sold. All persons who attend the sale do so at their own risk and owners or sale personnel assume no liability for accidents

## BOARDING:

Bulls will be wintered at no additional charge until April 1, 2026. Bulls are guaranteed to pass a breeding soundness exam prior to breeding season.

## SUPPLEMENT SHEET:

Announcements from the auction block will take precedence over statements in the catalog. Disclaimer: The information in this catalog is subject to change.



*Guest Breeders*



**HILL BROTHERS LIVESTOCK** NUNN, CO  
PAUL, NIA, EASTON, SUTTON & HAYDEN HILL

**YOUNG FAMILY CATTLE** ST. CHARLES, MN  
TANNER, LORI & TEAGAN YOUNG

**SEQUIM VALLEY ANGUS & SIMMENTALS** SEQUIM, WA  
JAKE, EMMA & TRIGG SMITH

**DENNING SIMMENTAL FARM** MCGREGOR, IA  
MICHAEL DENNING

**STACKED K CATTLE** WENTWORTH, SD  
JEFF & BRYNN KAFKA

**ROLLING S RANCH** COVINGTON, TX  
KRIS AND DALE SMITH

**KIK FARMS LLC** BROWNSDALE, IN  
KEN ISLEY

**KEMPER CATTLE CO.** MAUSTON, WI  
ISABELL & ASHTON KEMPER



# Herd Health

## AT BIRTH:

TRI SHIELD PASTE  
MULTI MIN  
IODINE NAVEL  
DAY 5 - INFORCE 3  
VISION 7 CDT

## PRE WEANING 8/15

PYRAMID 5 W/ PRESPONSE  
CALVARY 9  
PROTECTUS - POUR ON

## SECOND ROUND 9/15

PYRAMID 5 W/ PRESPONSE  
CALVARY 9  
SAFEGUARD DEWORMER

## BRED HEIFERS PRE-BREEDING

EXPRESS 10 HB  
VISION 7 WITH SPUR  
MULTIMIN 90

## BRED HEIFERS TURN-OUT

LONG RANGE  
CLEAN UP POUR ON  
PINKEYE VACCINE

## BRED HEIFERS 11 /22

BOVILIS GUARDIAN  
VIRA SHIELD 6 LV5  
ULTRA BAC 7  
POUR W/ CYLENCE

## BRED HEIFERS 12/15

BOVILIS GUARDIAN

**NUTRITIONIST:** BRAD SPAIN (563) 212-2658



VOLUME  
DISCOUNT

2 Bulls - 2% Discount  
3 Bulls - 3% Discount  
4 Bulls - 4% Discount  
5+ Bulls - 5% Discount

# Brand Guarantee

### 1. Four-Year Feet and Semen Guarantee

All bulls sell with a four-breeding season guarantee on feet and semen. If the bull's feet or semen limit the bull's breeding due to genetics or structure, we will provide a sliding-scale credit for the breeding seasons left to complete. The sale credit amount issued will be the purchase price minus salvage value, with a 25% value reduction for each breeding season completed. Feet and Semen are covered for unsoundness NOT caused by illness, foot rot, neglect, or other cattle. A veterinarian semen test or soundness examination certifying that the bull is in good health and condition is required. Sale credit can only be used on one animal and must be used within one year.

### 2. Feeder-Calf Marketing Program

We have feedlots wanting to buy calves out of our genetics. Contact Seth if you would like to get a bid on your calves – at the farm or the sale barn. Early notice will help us get loads in order.

### 3. Female Guarantee

All females sold as open animals are guaranteed to breed or they will be replaced with another animal, or with sale credit towards another female. Sale credit must be used within one year.

### 4. Sight-Unseen Purchase Guarantee

All cattle bought sight unseen- If you don't like the animal once delivered, you don't own it. Warranty will be issued for the appropriate value as sale credit towards another animal and must be used within one year.

**5. If you have an issue with an animal purchased from us, please let us know, and we will find a solution.**

WEDNESDAY  
february

4

CATTLE ON DISPLAY

THURSDAY  
february

5

9:00 AM  
CATTLE ON DISPLAY

11:30 AM  
LUNCH SERVED

1:00 PM  
SALE STARTS

[KAEHLERCATTLE.COM](http://KAEHLERCATTLE.COM)

Schedule OF EVENTS

# INNOVATION

— AgMarketing, LLC —

The Kaehler family name has been tied to production agriculture for well over a century. The multi-generational, diversified agricultural entity has a nationwide reputation for a product that is unrivaled. Several family members are involved in the operation, instrumental in ensuring the outfit continues its evolution. The operation is under the leadership and vision of Seth and his wife Shelby, who share an eye and passion for the seedstock business. Their joint desire to be the best is demonstrated by a diligent work ethic and the “follow-through” implementation of improved ideas and technologies to create a product suitable for all aspects of innovative beef production.

It is a challenge to find anyone in this business who is more open-minded in their approach to the industry! Seth and Shelby scour the internet and the country each year in search of fresh genetics. These genetics not only maintain the trademarked phenotype but also perform well in the calculations and statistics, which play into the end-product conversion on the hoof and on the rail. This family does not believe in “status quo,” but they absolutely believe in stepping up their game as they strive to win at everything this life has for them, passing those same advantages on to you annually.

The 2026 offering is certainly slated to be the very best! It will feature a variety of different matings by several of the elite SimGenetic A.I. sires in the business, that have been introduced to the very potent and proven female base that carries the K-LER brand. We are sure that even the most discriminating of breeders will be able to find what their operation needs between the covers of this sale book. The cattle are supported by genomic data and the best performance data ever measured in the history of the family business. In times like the successful ones the industry continues to experience, this is not the time to sit on the sidelines and avoid genetic improvement. Now more than ever, it is the time to invest in the next genetic advancement that your respective operation needs to take advantage of. The bulls and females in this offering are a prime example of the discipline and strategy that the young stock family has employed since the generational turnover that placed them at the forefront of the family name and business.

Please consider this your invitation to join us at the farm on February 5, 2026. Make note to mark those calendars to make the trip to southeast Minnesota for a very elite and genuine offering of SimGenetic and Angus bull and female power. If you should need any assistance or guidance with your purchases or need additional information about the offering, please reach out to any of the Innovation Ag Marketing team.

We look forward to seeing you at the sale!

*Graham Blagg* *Jered Shipman*  
*Tim Anderson*



**KLER DFS1 AUTUMN BREEZE 3008L** FULL SISTER TO LOT 1 & 2  
2025 \$30,000 SECOND HIGH SELLING FEMALE

# TOP TEN Ranking

| LOT | NAME                     | CE EPD |
|-----|--------------------------|--------|
| 50  | KLER KCC ALL RISE N1500  | 20.3   |
| 51  | KLER KCC STAND UP N1600  | 20.3   |
| 52  | KLER KCC TOP SHELF N1200 | 20.3   |
| 47  | KLER POWER GRID N147     | 19.4   |
| 31  | KLER SMALL NOX N77       | 19.0   |
| 27  | KLER NOTCH N98           | 18.0   |
| 46  | KLER FULL CHARGE N145    | 17.2   |
| 53  | KLER NORTH BRANCH N600   | 16.7   |
| 26  | KLER NEVERMORE N76       | 16.5   |
| 10  | KLER NORTHERN LIGHTS N58 | 16.3   |

| LOT | NAME                     | MARB EPD |
|-----|--------------------------|----------|
| 53  | KLER NORTH BRANCH N600   | 1.28     |
| 46  | KLER FULL CHARGE N145    | 1.09     |
| 50  | KLER KCC ALL RISE N1500  | 1.04     |
| 51  | KLER KCC STAND UP N1600  | 1.04     |
| 52  | KLER KCC TOP SHELF N1200 | 1.04     |
| 54  | KLER WARRIOR N151        | 1.00     |
| 47  | KLER POWER GRID N147     | 0.99     |
| 21  | KLER NORTHERN GRIT N21   | 0.78     |
| 10  | KLER NORTHERN LIGHTS N58 | 0.68     |
| 37  | KLER NAPSTER N45         | 0.63     |

| LOT | NAME                         | WW EPD |
|-----|------------------------------|--------|
| 8   | KLER NO LIMIT N28            | 116.0  |
| 28  | KLER MRT CURE ALL N113       | 112.9  |
| 13  | KLER R/S DARK KNIGHT N66     | 109.0  |
| 15  | KLER/STONE COLD STEVE AUSTIN | 107.6  |
| 50  | KLER KCC ALL RISE N1500      | 104.8  |
| 51  | KLER KCC STAND UP N1600      | 104.8  |
| 52  | KLER KCC TOP SHELF N1200     | 104.8  |
| 18  | KLER LIVING LEGEND N86       | 104.3  |
| 23  | KLER/SV OLYMPIC OUTLAW 5028N | 103.8  |
| 53  | KLER NORTH BRANCH N600       | 103.2  |

| LOT | NAME                     | API   |
|-----|--------------------------|-------|
| 47  | KLER POWER GRID N147     | 189.2 |
| 46  | KLER FULL CHARGE N145    | 188.2 |
| 21  | KLER NORTHERN GRIT N21   | 177.3 |
| 53  | KLER NORTH BRANCH N600   | 176.0 |
| 37  | KLER NAPSTER N45         | 175.9 |
| 20  | KLER NIGHT FIRE N53      | 174.6 |
| 38  | KLER CASHIN CHECKS N34   | 173.8 |
| 50  | KLER KCC ALL RISE N1500  | 170.9 |
| 51  | KLER KCC STAND UP N1600  | 170.9 |
| 52  | KLER KCC TOP SHELF N1200 | 170.9 |

| LOT | NAME                         | YW EPD |
|-----|------------------------------|--------|
| 8   | KLER NO LIMIT N28            | 182.4  |
| 28  | KLER MRT CURE ALL N113       | 182.1  |
| 53  | KLER NORTH BRANCH N600       | 170.1  |
| 24  | KLER/SV HEAVY HAMMER 5033N   | 166.8  |
| 13  | KLER R/S DARK KNIGHT N66     | 165.5  |
| 18  | KLER LIVING LEGEND N86       | 164.1  |
| 23  | KLER/SV OLYMPIC OUTLAW 5028N | 163.6  |
| 37  | KLER NAPSTER N45             | 163.4  |
| 15  | KLER/STONE COLD STEVE AUSTIN | 163.2  |
| 50  | KLER KCC ALL RISE N1500      | 162.9  |

| LOT | NAME                         | TI    |
|-----|------------------------------|-------|
| 47  | KLER POWER GRID N147         | 112.0 |
| 38  | KLER CASHIN CHECKS N34       | 110.5 |
| 46  | KLER FULL CHARGE N145        | 110.3 |
| 53  | KLER NORTH BRANCH N600       | 109.5 |
| 37  | KLER NAPSTER N45             | 109.3 |
| 15  | KLER/STONE COLD STEVE AUSTIN | 108.4 |
| 21  | KLER NORTHERN GRIT N21       | 107.8 |
| 13  | KLER R/S DARK KNIGHT N66     | 106.6 |
| 50  | KLER KCC ALL RISE N1500      | 106.2 |
| 51  | KLER KCC STAND UP N1600      | 106.2 |





## 1 KLER DFS1 TITAN FORCE N400

TATTOO: N400 | DOB: 1/11/25 | ASA: 4536711 | BREED: PB SM

HHS MR 847D  
KBHR REVOLUTION H071  
WS MISS SUGAR C4  
W/C FORT KNOX 609F  
ES AUTUMN J113  
ES F83

HOMOZYGOUS POLLED > HETEROZYGOUS BLACK

| CE   | BW  | WW   | YW    | ADG  | MCE | MILK | MWW  |
|------|-----|------|-------|------|-----|------|------|
| 11.7 | 0.3 | 88.6 | 135.8 | 0.30 | 4.5 | 20.3 | 64.5 |
| 30   | 35  | 20   | 20    | 25   |     |      | 45   |

| STAY | DOC  | CW   | YG    | MARB | BF     | REA  | API   | TI   |
|------|------|------|-------|------|--------|------|-------|------|
| 14.5 | 14.6 | 28.3 | -0.32 | 0.24 | -0.062 | 0.76 | 142.1 | 89.5 |
|      | 20   |      |       | 40   |        |      | 35    | 25   |

|          |    |          |     |          |      |
|----------|----|----------|-----|----------|------|
| ADJ BW   | 80 | ADJ WW   | 711 | ADJ YW   | 1305 |
| BW RATIO | ET | WW RATIO | ET  | YW RATIO | ET   |



**KLER DFS1 MAJORITY RULES M140**  
\$19,500 MATERNAL BROTHER TO LOT 1 & 2

In the deepest and most dynamic set of herd bulls to be ever be branded with the KLER prefix, we initiate the class with a pair of full brothers that offer value to stockmen from every walk of life. It's no secret that we are trying to blend the best phenotype we can, into a genomics package that works for all production goals, and this duo sum up the goals fairly accurately. From a width and power substance they sure impress, yet they still look to have the athleticism and flexibility to be able to cover big country and find cows to cover. Genomically they come more than appropriate about their calving ease with top third or better BW, and then will be the source of growth and payweight with WW and YW EPD's that excel them into the top 20% or better. Their profitability indexes back up the impressive stature and value-added look that this duo have been blessed with. Stemming from one of the hottest young donor cows in our battery, this serves up the opportunity to tie into the most productive pedigrees we look to grow from moving forward.



## 2 KLER DFS1 NASHVILLE N800

TATTOO: N800 | DOB: 1/16/25 | ASA: 4536713 | BREED: PB SM

HHS MR 847D  
KBHR REVOLUTION H071  
WS MISS SUGAR C4  
W/C FORT KNOX 609F  
ES AUTUMN J113  
ES F83

HOMOZYGOUS POLLED > HETEROZYGOUS BLACK

| CE  | BW  | WW   | YW    | ADG  | MCE | MILK | MWW  |
|-----|-----|------|-------|------|-----|------|------|
| 9.7 | 0.0 | 96.3 | 150.5 | 0.34 | 4.7 | 20.3 | 68.4 |
|     | 30  | 10   | 10    | 10   |     |      | 30   |

| STAY | DOC  | CW   | YG    | MARB | BF     | REA  | API   | TI   |
|------|------|------|-------|------|--------|------|-------|------|
| 12.8 | 15.9 | 38.1 | -0.23 | 0.32 | -0.038 | 0.80 | 144.2 | 96.0 |
|      | 10   | 35   |       | 30   |        |      | 35    | 10   |

|          |    |          |     |          |      |
|----------|----|----------|-----|----------|------|
| ADJ BW   | 88 | ADJ WW   | 709 | ADJ YW   | 1328 |
| BW RATIO | ET | WW RATIO | ET  | YW RATIO | ET   |



**ES AUTUMN J113**  
DAM OF LOT 1 & 2





3

## KLER NORTHERN LEGEND N43

TATTOO: N43 | DOB: 1/9/25 | ASA: 4536623 | BREED: PB SM

HHS MR 847D  
KBHR REVOLUTION H071  
WS MISS SUGAR C4  
LERS TURNPIKE 333G  
KLER MS SERENITY 044J  
K-LER SERENITY 437B

POLLED > BLACK

| CE   | BW  | WW   | YW    | ADG  | MCE | MILK | MWW  |
|------|-----|------|-------|------|-----|------|------|
| 11.9 | 0.6 | 77.2 | 125.2 | 0.30 | 5.9 | 24.4 | 62.9 |
| 30   | 40  |      | 40    | 25   |     | 40   |      |

| STAY | DOC  | CW   | YG    | MARB | BF     | REA  | API   | TI   |
|------|------|------|-------|------|--------|------|-------|------|
| 17.9 | 16.9 | 50.5 | -0.27 | 0.31 | -0.054 | 0.95 | 148.8 | 84.6 |
| 25   | 4    | 10   |       | 30   |        | 35   | 25    | 40   |

|          |    |          |     |          |      |
|----------|----|----------|-----|----------|------|
| ADJ BW   | 78 | ADJ WW   | 719 | ADJ YW   | 1472 |
| BW RATIO | 93 | WW RATIO | 99  | YW RATIO | 109  |



**KLER MUSCLE MAN M86**  
MATERNAL BROTHER TO LOT 3



4

## KLER NITRO N44

TATTOO: N44 | DOB: 1/9/25 | ASA: 4536624 | BREED: PB SM

HHS MR 847D  
KBHR REVOLUTION H071  
WS MISS SUGAR C4  
RFG/K-LER ELEVATION 727E  
KLER SERENA G14  
KMJ/K-LER MS ROBUST D336

HOMOZYGOUS POLLED > HOMOZYGOUS BLACK

| CE  | BW  | WW   | YW    | ADG  | MCE | MILK | MWW  |
|-----|-----|------|-------|------|-----|------|------|
| 9.9 | 1.9 | 88.6 | 132.8 | 0.28 | 5.3 | 28.1 | 72.2 |
|     |     | 20   | 25    | 35   |     | 20   | 15   |

| STAY | DOC  | CW   | YG    | MARB | BF     | REA  | API   | TI   |
|------|------|------|-------|------|--------|------|-------|------|
| 19.4 | 14.0 | 39.1 | -0.28 | 0.51 | -0.059 | 0.81 | 160.7 | 94.5 |
| 15   | 25   | 30   |       | 10   |        |      | 15    | 15   |

|          |     |          |     |          |      |
|----------|-----|----------|-----|----------|------|
| ADJ BW   | 88  | ADJ WW   | 797 | ADJ YW   | 1412 |
| BW RATIO | 105 | WW RATIO | 110 | YW RATIO | 105  |



**KLER SERENA DANCE 3028L**  
\$17,000 MATERNAL SISTER TO LOT 4

Here is a maternal brother to the popular KLER Muscle Man M86 stud that Casey Rood purchased last year. This year's model comes with an even more balanced set of EPD predictions, and offers a shot more calving ease and favorable birthweight predictions. This stud comes with a really powerfully constructed frame, being wide and expressive throughout. His genetics read on paper with power, and profitability, and all-around ease of use, foreshadowing whole herd improvements from his service. Power up a herd in one generation with a son of KBHR Revolution H071.

KLER Nitro N44 is a homozygous black and homozygous polled, growth enhancer! This purebred son of KBHR Revolution H071 is powered up both genomically, and phenotypically to induce serious amounts of profit rewarded pounds. He is a maternal brother to the \$17,000 KLER Serena Dance 3028L that was purchased last year by Kemper Cattle Company, and his dam stems from the in herd legend, KMJ/K-LER Ms Robust D336 that has had a strong showing of progeny on the front end of this sale since its inception. Growth and carcass quality are the two advantages that he will sire from the get go.



5

## KLER NORTHERN SKY N13

TATTOO: N13 | DOB: 1/1/25 | ASA: 4536613 | BREED: 3/4 SM 1/4 AN

HHS MR 847D  
KBHR REVOLUTION H071  
WS MISS SUGAR C4  
TJ MAIN EVENT 503B  
KLER DOLLY PARTON 971G  
GW MISS GPRD 028X

HOMOZYGOUS POLLED > HOMOZYGOUS BLACK

| CE  | BW  | WW   | YW    | ADG  | MCE | MILK | MWW  |
|-----|-----|------|-------|------|-----|------|------|
| 9.0 | 1.1 | 90.2 | 125.9 | 0.22 | 3.5 | 24.9 | 69.9 |
|     |     | 15   | 40    |      |     | 40   | 20   |

| STAY | DOC  | CW   | YG    | MARB | BF     | REA  | API   | TI   |
|------|------|------|-------|------|--------|------|-------|------|
| 17.7 | 18.0 | 45.9 | -0.35 | 0.28 | -0.060 | 1.08 | 131.0 | 85.1 |
| 25   | 4    | 30   | 10    |      | 25     | 4    |       | 45   |

|          |     |          |     |          |      |
|----------|-----|----------|-----|----------|------|
| ADJ BW   | 84  | ADJ WW   | 760 | ADJ YW   | 1322 |
| BW RATIO | 100 | WW RATIO | 105 | YW RATIO | 98   |

Another standout son of KBHR Revolution H071 that is coming from the KLER Dolly Parton 971G dam, it looks like this cow needs to get to the donor pen. His full brother sold last year for \$10,000 to James Tibken and the year before a maternal brother sold to Fenco Farms for \$9,750. Loaded with mass and muscle, while still being smooth shouldered and attractively built, he is the kind that you like to look at, and will love the results from. Yet another top end growth and carcass yield bull in this offering. He is homozygous black and homozygous polled.



**KLER CASHTON M16**  
\$10,000 FULL BROTHER TO LOT 5



6

## RFG / KLER REVOLUTION N28

TATTOO: N28 | DOB: 2/13/25 | ASA: 4569048 | BREED: PB SM

HHS MR 847D  
KBHR REVOLUTION H071  
WS MISS SUGAR C4  
KLER PROMOTER G15  
KLER MS 2012K  
K-LER/RC MISS KANSA 414B

HOMOZYGOUS POLLED > BLACK

| CE   | BW   | WW   | YW    | ADG  | MCE | MILK | MWW  |
|------|------|------|-------|------|-----|------|------|
| 12.8 | -0.2 | 88.7 | 134.7 | 0.29 | 4.4 | 19.4 | 63.6 |
| 25   | 25   | 20   | 25    | 30   |     |      |      |

| STAY | DOC  | CW   | YG    | MARB | BF     | REA  | API   | TI   |
|------|------|------|-------|------|--------|------|-------|------|
| 16.1 | 14.6 | 37.6 | -0.38 | 0.18 | -0.067 | 1.04 | 144.6 | 89.1 |
| 45   | 20   | 35   | 45    |      |        | 20   | 30    | 25   |

|          |     |          |     |          |      |
|----------|-----|----------|-----|----------|------|
| ADJ BW   | 84  | ADJ WW   | 681 | ADJ YW   | 1277 |
| BW RATIO | 102 | WW RATIO | 104 | YW RATIO | 100  |

RFG / KLER Revolution N28 is a purebred that offers quality all the way across his genomic roster. Calving ease - check, performance - check, longevity - check, profitability - check. If you are headed towards trying to get the most profit out of your cowherd, and are afraid for sacrificing something, then he is the kind to sort out on sale day. Have your cake and eat it too type of scenario here.



**KBHR REVOLUTION H071**  
SIRE OF LOT 1-9





**KLER LORNA 3068L**  
DAM OF LOT 7



## KLER NORRIS N55

TATTOO: N55 | DOB: 1/20/25 | ASA: 4519228 | BREED: PB SM

HHS MR 847D  
**KBHR REVOLUTION H071**  
WS MISS SUGAR C4  
KLER PROMOTER G15  
**KLER LORNA 3068L**  
KMJ/K-LER MS SFORCE C108

HOMOZYGOUS POLLED > BLACK

| CE  | BW  | WW   | YW    | ADG  | MCE | MILK | MWW  |
|-----|-----|------|-------|------|-----|------|------|
| 7.7 | 2.6 | 94.4 | 145.4 | 0.32 | 2.4 | 21.3 | 68.4 |
|     |     | 10   | 10    | 15   |     |      | 30   |

| STAY | DOC  | CW   | YG    | MARB | BF     | REA  | API   | TI   |
|------|------|------|-------|------|--------|------|-------|------|
| 16.9 | 14.1 | 57.4 | -0.42 | 0.41 | -0.086 | 1.25 | 149.9 | 94.4 |
| 35   | 25   | 4    | 25    | 20   | 25     | 3    | 25    | 15   |

|          |     |          |     |          |      |
|----------|-----|----------|-----|----------|------|
| ADJ BW   | 87  | ADJ WW   | 808 | ADJ YW   | 1231 |
| BW RATIO | 117 | WW RATIO | 100 | YW RATIO | 100  |

A purebred that tested homozygous polled, and stems from an impressive first calving. KLER Promoter G15 daughter that is backed by the Hooks Shear Force 38K influence. We have always had high hopes for his dam, but she knocked it out of the park with her first at bat. His genomically enhanced EPD set reads heavily favorable for growth and performance, and his massive 800lbs. plus weaning weight would suggest the same thing. Certainly an impressive growth bull that has all the ingredients to add pounds to your cowherds bottom-line.



**KLER LOVELY LADY 2023K**  
\$35,000 VALUED MATERNAL SISTER TO LOT 8



## KLER NO LIMIT N28

TATTOO: N28 | DOB: 1/2/25 | ASA: 4536619 | BREED: 3/4 SM 1/4 AN

HHS MR 847D  
**KBHR REVOLUTION H071**  
WS MISS SUGAR C4  
W/C LOCK DOWN 206Z  
**RC MISS LOCKDOWN 420E**  
RC MISS BISMARCK 468B

HOMOZYGOUS POLLED > HOMOZYGOUS BLACK

| CE  | BW  | WW    | YW    | ADG  | MCE | MILK | MWW  |
|-----|-----|-------|-------|------|-----|------|------|
| 3.4 | 5.2 | 116.0 | 182.4 | 0.42 | 3.1 | 17.9 | 75.8 |
|     |     | 1     | 1     | 2    |     |      | 10   |

| STAY | DOC  | CW   | YG    | MARB | BF     | REA  | API   | TI   |
|------|------|------|-------|------|--------|------|-------|------|
| 14.6 | 18.0 | 62.1 | -0.14 | 0.30 | -0.028 | 0.89 | 123.4 | 94.5 |
|      | 4    | 5    |       |      |        | 20   |       | 15   |

|          |     |          |     |          |      |
|----------|-----|----------|-----|----------|------|
| ADJ BW   | 88  | ADJ WW   | 761 | ADJ YW   | 1466 |
| BW RATIO | 105 | WW RATIO | 105 | YW RATIO | 109  |

The pedigree of KLER No Limit N28 aligns some of the power stock to call St. Charles home. His dam has become a fruitful provider of the goods, as last year a full brother KLER Mongo M1 sold for \$9,000 to Gary Van Dyke and a couple of years prior a maternal sister, sold for \$35,000. You will read a lot of truth to his most elite top 1% EPD numbers when you find him in person as he is a high growth, large scaled beef bull that stands out among his contemporaries.



## KIK KLER NATO N152

TATTOO: N152 | DOB: 2/17/25 | ASA: 4580079 | BREED: 3/4 SM 5/32 AR 3/32 AN

HHS MR 847D  
**KBHR REVOLUTION H071**  
WS MISS SUGAR C4  
W/C FORT KNOX 609F  
**ES K152**  
ES B44

HOMOZYGOUS POLLED > HETEROZYGOUS BLACK

| CE   | BW  | WW   | YW    | ADG  | MCE | MILK | MWW  |
|------|-----|------|-------|------|-----|------|------|
| 11.7 | 0.0 | 82.5 | 129.3 | 0.29 | 6.8 | 25.7 | 66.9 |
|      |     | 35   | 35    | 40   |     | 35   | 35   |

| STAY | DOC  | CW   | YG    | MARB | BF     | REA  | API   | TI   |
|------|------|------|-------|------|--------|------|-------|------|
| 15.7 | 17.4 | 35.2 | -0.15 | 0.33 | -0.035 | 0.55 | 133.7 | 83.6 |
| 45   | 5    |      |       |      |        |      |       |      |

|          |    |          |     |          |      |
|----------|----|----------|-----|----------|------|
| ADJ BW   | 77 | ADJ WW   | 702 | ADJ YW   | 1157 |
| BW RATIO | 93 | WW RATIO | 100 | YW RATIO | 100  |

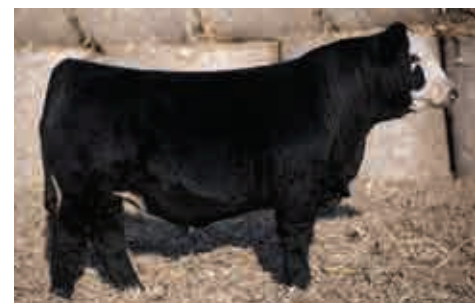
Certainly one of the most appropriate calving ease and birthweight sons of the KBHR Revolution H071 sire group, coming with a very modest 77lbs. BW and has a build that would reflect those same indications. This 3/4 blood also offers the advantage of being homozygous polled, and maintains top third of the breed projections for Weaning Weight and Yearling Weight.



**KLER FORMULA 1**  
SIRE OF LOT 10



**KLER LADY MAY L25**  
DAM OF LOT 10



**KLER NEW ERA L16**  
MATERNAL BROTHER TO DAM OF LOT 10



## KLER NORTHERN LIGHTS N58

TATTOO: N58 | DOB: 1/22/25 | ASA: 4519230 | BREED: 1/2 SM 1/2 AN

GB FIREBALL 672  
**KLER FORMULA 1**  
RIVERBEND QUEENIE C353  
KBHR REVOLUTION H071

**KLER LADY MAY L25**  
ELLINGSON/STR MS INNOVATOR

|          |    |          |     |          |      |
|----------|----|----------|-----|----------|------|
| ADJ BW   | 68 | ADJ WW   | 740 | ADJ YW   | 1539 |
| BW RATIO | 91 | WW RATIO | 110 | YW RATIO | 100  |

HOMOZYGOUS POLLED > HOMOZYGOUS BLACK

| CE   | BW  | WW   | YW    | ADG  | MCE  | MILK | MWW  |
|------|-----|------|-------|------|------|------|------|
| 16.3 | 0.0 | 99.0 | 162.3 | 0.40 | 10.5 | 31.2 | 80.9 |
| 15   |     | 4    | 3     | 3    | 10   | 10   | 2    |

| STAY | DOC  | CW   | YG   | MARB | BF    | REA  | API   | TI    |
|------|------|------|------|------|-------|------|-------|-------|
| 14.5 | 16.7 | 66.0 | 0.00 | 0.68 | 0.001 | 0.75 | 164.0 | 103.3 |
|      | 10   | 3    |      | 15   |       | 40   | 15    | 4     |

KLER Northern Lights N58 has been a standout of this class of bulls from the beginning, not only do his perfect markings catch your immediate attention. But the ultimate level of power and shape he is built with really impress all those who have seen him in person. He is the kind that just struts with authority and presence and exudes quality just through his presence. The pedigree of KLER Northern Lights N58 sure adds credit to the equation as well, his maternal granddam, Ellingson/STR Ms Innovator is a full sister to the sire of influence CDI Innovator 325D. His sire, KLER Formula 1 was the \$60,000 purchase of Express Ranches & Genex, and continues to be a profitability leader of the Angus \$ indexes across the board. Not only do the genomics indicate that this stud is a leader of the cohort, but so has the raw data that he has recorded, with a very impressive 1500lbs. plus yearling weight, he is truly a man among boys.





Here is the impressive maternal brother to the \$30,000 highlight from the 2025 Structured for Success that sold to Stavick Simmental of South Dakota. KLER YFC Noble Beast N40 comes in a little different speed though, as last year's model was a calving ease specialist, and this year you will find an extra high-performance beast that is certainly an impressive specimen, both genomically and in the flesh. He sported a very impressive growth curve from birth to weaning, and continued to mature impressively. He stems back to the trident K-LER Barbie 455B donor that has aged like a fine wine! Just because he is a performance bull on paper, do not be surprised if he sires females that you want to retain and build the cowherd from as he comes with a maternal baking laced with excellence.



**KLER YFC YOUNG BUCK M44**  
\$30,000 MATERNAL BROTHER TO LOT 11

## 11 KLER YFC NOBLE BEAST N40

TATTOO: N40 | DOB: 1/8/25 | ASA: 4536620 | BREED: PB SM

LBRS GENESIS G69  
RUBYS QUADRANT 210K  
RUBYS LINDA 721E  
WS REVIVAL  
KLER BARBIES STAR 972G  
K-LER BARBIE 455B

HOMOZYGOUS POLLED > HOMOZYGOUS BLACK

| CE  | BW  | WW   | YW    | ADG  | MCE | MILK | MWW  |
|-----|-----|------|-------|------|-----|------|------|
| 8.4 | 1.1 | 98.5 | 142.6 | 0.28 | 6.3 | 24.5 | 73.6 |
|     |     | 5    | 15    | 35   | 40  | 40   | 10   |

|          |    |          |     |          |      |
|----------|----|----------|-----|----------|------|
| ADJ BW   | 80 | ADJ WW   | 744 | ADJ YW   | 1185 |
| BW RATIO | 95 | WW RATIO | 105 | YW RATIO | 96   |

| STAY | DOC  | CW   | YG    | MARB | BF     | REA  | API   | TI   |
|------|------|------|-------|------|--------|------|-------|------|
| 14.7 | 19.1 | 49.3 | -0.32 | 0.26 | -0.054 | 1.09 | 140.3 | 94.4 |
|      | 1    | 10   |       | 35   |        | 15   | 40    | 15   |



KLER Notorious N6 comes with the B.I.G. features. He is big footed, rugged made, and built to add length, pounds and power to his calf crop. Add this purebred, homozygous polled and homozygous black herd bull to the roster to inject a serious amount of consistency and pay weight to your calf crop when it comes time to market them. He will sire growth towards weaning and beyond. Note that maternally he stems back to the legendary GW Miss GPRD 028X female that has stamped her influence on the business through both sons and daughters of significant influence.



**KLER LISHA 3108L**  
MATERNAL SISTER TO LOT 12

## 12 KLER NOTORIOUS N6

TATTOO: N6 | DOB: 1/1/25 | ASA: 4536610 | BREED: PB SM

LBRS GENESIS G69  
RUBYS QUADRANT 210K  
RUBYS LINDA 721E  
K-LER MAKE IT RAIN  
K-LER FELISHA 627D  
GW MISS GPRD 028X

HOMOZYGOUS POLLED > HOMOZYGOUS BLACK

| CE  | BW  | WW   | YW    | ADG  | MCE | MILK | MWW  |
|-----|-----|------|-------|------|-----|------|------|
| 9.9 | 0.6 | 94.9 | 138.5 | 0.27 | 5.1 | 25.5 | 72.8 |
|     | 40  | 10   | 20    | 40   |     | 35   | 15   |

|          |    |          |     |          |      |
|----------|----|----------|-----|----------|------|
| ADJ BW   | 80 | ADJ WW   | 784 | ADJ YW   | 1305 |
| BW RATIO | 95 | WW RATIO | 108 | YW RATIO | 97   |

| STAY | DOC  | CW   | YG    | MARB | BF     | REA  | API   | TI   |
|------|------|------|-------|------|--------|------|-------|------|
| 14.0 | 15.1 | 45.3 | -0.15 | 0.31 | -0.020 | 0.77 | 142.6 | 93.8 |
|      | 15   | 20   |       | 30   |        |      | 35    | 15   |





## KLER R/S DARK KNIGHT N66

TATTOO: N66

DOB: 1/29/25

ASA: 4536634

BREED: PB SM

LBRS GENESIS G69

**RUBYS QUADRANT 210K**

RUBYS LINDA 721E

HOOK'S FULL FIGURES 11F

**FIVE STAR JANAE J9**

KBHR F316

HOMOZYGOUS POLLED > HETEROZYGOUS BLACK

| CE  | BW  | WW    | YW    | ADG  | MCE | MILK | MWW  |
|-----|-----|-------|-------|------|-----|------|------|
| 8.7 | 1.8 | 109.0 | 165.5 | 0.35 | 7.6 | 35.4 | 89.8 |
|     |     | 1     | 2     | 10   | 20  | 2    | 1    |

| STAY | DOC  | CW   | YG    | MARB | BF     | REA  | API   | TI    |
|------|------|------|-------|------|--------|------|-------|-------|
| 15.1 | 20.8 | 54.1 | -0.41 | 0.44 | -0.056 | 1.42 | 156.3 | 106.6 |
|      | 1    | 5    | 30    | 15   |        | 1    | 20    | 2     |

|          |    |          |     |          |      |
|----------|----|----------|-----|----------|------|
| ADJ BW   | 85 | ADJ WW   | 811 | ADJ YW   | 1425 |
| BW RATIO | ET | WW RATIO | ET  | YW RATIO | ET   |



**FIVE STAR JANAE J9**  
DAM OF LOT 13-15



**KLER R/S SHOCK WAVE M17**  
\$20,000 MATERNAL BROTHER TO LOT 13-15



**FIVE STAR JACKSON J10**  
\$65,000 FULL BROTHER TO THE DAM OF LOTS 13-15





14

## KLER R/S NIGHTHAWK N49

TATTOO: N49 | DOB: 1/11/25 | ASA: 4536628 | BREED: PB SM

LBRS GENESIS G69  
RUBYS QUADRANT 210K  
RUBYS LINDA 721E  
HOOK'S FULL FIGURES 11F  
FIVE STAR JANAIE J9  
KBHR F316

|          |    |          |     |          |      |
|----------|----|----------|-----|----------|------|
| ADJ BW   | 79 | ADJ WW   | 807 | ADJ YW   | 1425 |
| BW RATIO | ET | WW RATIO | ET  | YW RATIO | ET   |

HOMOZYGOUS POLLED > HETEROZYGOUS BLACK

| CE   | BW   | WW    | YW    | ADG  | MCE | MILK | MWW  |
|------|------|-------|-------|------|-----|------|------|
| 12.8 | -0.2 | 100.7 | 150.1 | 0.31 | 8.2 | 35.4 | 85.7 |
| 25   | 25   | 3     | 10    | 20   | 15  | 2    | 1    |

| STAY | DOC  | CW   | YG    | MARB | BF     | REA  | API   | TI    |
|------|------|------|-------|------|--------|------|-------|-------|
| 16.2 | 21.1 | 39.8 | -0.33 | 0.49 | -0.039 | 1.10 | 165.8 | 105.2 |
| 45   | 1    | 30   |       | 15   |        | 15   | 10    | 2     |



15

## KLER/STONE COLD STEVE AUSTIN

TATTOO: 507N | DOB: 2/2/25 | ASA: 4553570 | BREED: PB SM

LBRS GENESIS G69  
RUBYS QUADRANT 210K  
RUBYS LINDA 721E  
HOOK'S FULL FIGURES 11F  
FIVE STAR JANAIE J9  
KBHR F316

|          |    |          |     |          |      |
|----------|----|----------|-----|----------|------|
| ADJ BW   | 78 | ADJ WW   | 842 | ADJ YW   | 1239 |
| BW RATIO | ET | WW RATIO | ET  | YW RATIO | ET   |

HOMOZYGOUS POLLED > BLACK

| CE  | BW  | WW    | YW    | ADG  | MCE | MILK | MWW  |
|-----|-----|-------|-------|------|-----|------|------|
| 8.0 | 0.9 | 107.6 | 163.2 | 0.35 | 7.3 | 35.4 | 89.1 |
|     | 45  | 1     | 2     | 10   | 25  | 2    | 1    |

| STAY | DOC  | CW   | YG    | MARB | BF     | REA  | API   | TI    |
|------|------|------|-------|------|--------|------|-------|-------|
| 14.9 | 19.2 | 49.3 | -0.34 | 0.52 | -0.054 | 1.16 | 160.3 | 108.4 |
|      | 1    | 10   |       | 10   |        | 10   | 15    | 1     |



KLER R/S POWER GLIDE M139  
MATERNAL BROTHER TO LOT 13-15

Here we present the results from a mating that we have been very excited about from the moment we laid eyes on Rubys Quadrant 210K. The mating of 210K on our leading Five Star Janae J9 donor dam has yielded a trio of herd bull prospects that offer worlds of quality beef bull characteristic. Their dam is a full sister to the \$65,000 Five Star Jackson J10 that has really started to make waves across the business as a promoter of quality both on paper and foot. Janae J9 is building her own impressive legacy of progeny during her time working for K-LER with the \$20,000 KLER R/S Shock Wave M17 that sold last year to Goings Cattle Company and another brother selling to Lucas Laufenberg. 2026 reveals her biggest and most dynamic crop of sons and daughters, and we think they will be crowd favorites. Regardless of the angle of inspection, we think you are bound to find immense levels of value and utility with any member of this trio. There has never been a more obvious time than now to invest in high powered growth genetics, as any extra performance is being rewarded tenfold by the feeder cattle buyers. With this in mind, do not be afraid to dive into growth genetics like you find here that put you on the cutting edge of the Simmental database when it comes to advantages for WW, YW, ADG, MWW, DOC, REA and TI.



RUBYS QUADRANT 210K  
SIRE OF LOT 11-15



**KLER JANAE'S SECRET 3158L**  
DAM OF LOT 16-18  
2024 \$40,000 HALF INTEREST  
HIGH SELLING BRED

16

## KLER 100 PROOF N89

TATTOO: N89 | DOB: 2/18/25 | ASA: 4536649 | BREED: PB SM

OMF JOURNEYMAN J24  
JWC 2/F LIVING PROOF 283L  
W/C ANGEL 7113E  
MR SR RED OCTOBER G1761  
KLER JANAE'S SECRET 3158L  
FIVE STAR JANAE J9

HOMOZYGOUS POLLED > HETEROZYGOUS BLACK

| CE   | BW  | WW   | YW    | ADG  | MCE | MILK | MWW  |
|------|-----|------|-------|------|-----|------|------|
| 10.9 | 0.4 | 99.9 | 154.3 | 0.34 | 8.0 | 26.9 | 76.7 |
| 40   | 35  | 4    | 4     | 10   | 20  | 25   | 5    |

| STAY | DOC  | CW   | YG    | MARB | BF     | REA  | API   | TI   |
|------|------|------|-------|------|--------|------|-------|------|
| 10.8 | 14.7 | 57.0 | -0.46 | 0.26 | -0.078 | 1.45 | 140.3 | 98.1 |
|      | 20   | 4    | 15    | 35   | 45     | 1    | 40    | 10   |

|          |    |          |     |          |      |
|----------|----|----------|-----|----------|------|
| ADJ BW   | 64 | ADJ WW   | 729 | ADJ YW   | 1305 |
| BW RATIO | ET | WW RATIO | ET  | YW RATIO | ET   |



**JWC 2/F LIVING PROOF 283L**  
SIRE OF LOT 16-19

17

## KLER BULLET PROOF N63

TATTOO: N63 | DOB: 2/17/25 | ASA: 4536648 | BREED: PB SM

OMF JOURNEYMAN J24  
JWC 2/F LIVING PROOF 283L  
W/C ANGEL 7113E  
MR SR RED OCTOBER G1761  
KLER JANAE'S SECRET 3158L  
FIVE STAR JANAE J9

HOMOZYGOUS POLLED > HETEROZYGOUS BLACK

| CE   | BW   | WW   | YW    | ADG  | MCE | MILK | MWW  |
|------|------|------|-------|------|-----|------|------|
| 13.3 | -1.6 | 82.1 | 129.1 | 0.29 | 6.9 | 26.9 | 67.8 |
| 20   | 10   | 40   | 30    | 30   | 30  | 25   | 30   |

| STAY | DOC  | CW   | YG    | MARB | BF     | REA  | API   | TI   |
|------|------|------|-------|------|--------|------|-------|------|
| 14.7 | 16.7 | 42.3 | -0.45 | 0.45 | -0.076 | 1.22 | 158.2 | 94.8 |
|      | 5    | 25   | 20    | 15   | 45     | 4    | 15    | 15   |

|          |    |          |     |          |      |
|----------|----|----------|-----|----------|------|
| ADJ BW   | 78 | ADJ WW   | 722 | ADJ YW   | 1300 |
| BW RATIO | ET | WW RATIO | ET  | YW RATIO | ET   |



**W/C ANGEL 7113E**  
PATERNAL GRANDDAM OF LOT 16-19

18

## KLER LIVING LEGEND N86

TATTOO: N86 | DOB: 2/15/25 | ASA: 4536646 | BREED: PB SM

OMF JOURNEYMAN J24  
JWC 2/F LIVING PROOF 283L  
W/C ANGEL 7113E  
MR SR RED OCTOBER G1761  
KLER JANAE'S SECRET 3158L  
FIVE STAR JANAE J9

HOMOZYGOUS POLLED > HETEROZYGOUS BLACK

| CE  | BW  | WW    | YW    | ADG  | MCE | MILK | MWW  |
|-----|-----|-------|-------|------|-----|------|------|
| 7.9 | 1.2 | 104.3 | 164.1 | 0.37 | 5.9 | 26.9 | 78.9 |
|     |     | 2     | 2     | 3    |     | 25   | 3    |

| STAY | DOC  | CW   | YG    | MARB | BF     | REA  | API   | TI    |
|------|------|------|-------|------|--------|------|-------|-------|
| 11.3 | 15.0 | 52.0 | -0.44 | 0.47 | -0.079 | 1.30 | 150.1 | 104.9 |
|      | 15   | 10   | 20    | 15   | 45     | 2    | 25    | 2     |

|          |    |          |     |          |      |
|----------|----|----------|-----|----------|------|
| ADJ BW   | 89 | ADJ WW   | 708 | ADJ YW   | 1279 |
| BW RATIO | ET | WW RATIO | ET  | YW RATIO | ET   |

We are excited to introduce a new face to the donor lineup in Kler Janae's Secret 3158L. She was a standout from the 2023 born females, and is a direct daughter of the Five Star Janae J9 donor that is the dam of Lot 13-15. There is power embedded deep into the genetic base of this trio of power bulls, and they come entrenched with the consistency of a maternal lineage that is generations deep of good stuff. On the sire side we pooled from a highlight of Jared Werning's breeding in his \$75,000 JWC 2/F Living Proof 283L who is a son of the iconic W/C Angel 7113E donor that has become one of the most prolific females with an ASA number. Read into the genomic profiles of each of these impressive brothers, as they each offer some different advantages depending on the emphasis you are looking to exploit, yet all come with the phenotype to improve a cow base.





We love the type and kind that JWC 2/F Living Proof 283L has been siring, they are cattle that come with some extra comfort to their structural design, extra look and eye appeal from the profile, and all this combined with genetic power on either side of his pedigree made him a must use sire for our operation. We teamed him up here with the Five Star Janae J9 donor that is a full sister to the \$65,000 Five Star Jackson J10 sire that also has a strong influence in our cowherd. This red hided purebred sire delivers a set of very impressive calving ease figures, and has a smooth and angular design that would indicate the same trend, we thing his daughters will be tremendous to boot!



**KLER R/S SHOCK WAVE M17**  
MATERNAL BROTHER TO LOT 19

## 19 KLER MTB IRON PROOF N154

TATTOO: N154 | DOB: 3/26/25 | ASA: 4540025 | BREED: PB SM

OMF JOURNEYMAN J24  
JWC 2/F LIVING PROOF 283L  
W/C ANGEL 7113E  
HOOK'S FULL FIGURES 11F  
FIVE STAR JANA E J9  
KBHR F316

HOMOZYGOUS POLLED > RED

| CE   | BW   | WW   | YW    | ADG  | MCE | MILK | MWW  |
|------|------|------|-------|------|-----|------|------|
| 12.7 | -0.7 | 78.7 | 115.2 | 0.23 | 7.3 | 31.4 | 70.6 |
| 25   | 20   |      |       |      | 25  | 10   | 20   |

| STAY | DOC  | CW   | YG    | MARB | BF     | REA  | API   | TI   |
|------|------|------|-------|------|--------|------|-------|------|
| 11.3 | 15.6 | 36.1 | -0.40 | 0.34 | -0.056 | 1.14 | 139.8 | 88.6 |
|      | 10   | 40   | 35    | 25   |        | 10   | 40    | 30   |

|          |    |          |     |          |      |
|----------|----|----------|-----|----------|------|
| ADJ BW   | 80 | ADJ WW   | 589 | ADJ YW   | 1321 |
| BW RATIO | ET | WW RATIO | ET  | YW RATIO | ET   |



We are turning up the heat here with the red hided studs, and KLER Night Fire N53 is one that you can see coming from a mile away. Regardless of hide color it would be easy to find immense value in this homozygous polled, elite curvebender. Across the board you will find he compiles a lot of opportunity to increase quality and value. From sleep all night calving ease, to added scale pressure at every interval towards slaughter, his progeny are going to be favorable. All in all, his service is going to add value regardless of your marketing plan. His sire, Five Star Jackson J10 continues to get more popular with each breeding season, and we have high hopes for his young dam that we purchased from the Keller Broken Heart Ranch program.



**FIVE STAR JACKSON J10**  
SIRE OF LOT 20-22

## 20 KLER NIGHT FIRE N53

TATTOO: N53 | DOB: 1/15/25 | ASA: 4536631 | BREED: PB SM

HOOK'S FULL FIGURES 11F  
FIVE STAR JACKSON J10  
KBHR F316  
WS JAM-PACKED 88J  
KBHR L353 MS JAM-PACKED  
KBHR F065

HOMOZYGOUS POLLED > RED

| CE   | BW   | WW   | YW    | ADG  | MCE | MILK | MWW  |
|------|------|------|-------|------|-----|------|------|
| 14.9 | -1.6 | 88.7 | 136.3 | 0.30 | 9.1 | 28.4 | 72.7 |
| 10   | 10   | 20   | 20    | 25   | 10  | 20   | 15   |

| STAY | DOC  | CW   | YG    | MARB | BF     | REA  | API   | TI    |
|------|------|------|-------|------|--------|------|-------|-------|
| 17.1 | 13.5 | 27.9 | -0.23 | 0.60 | -0.037 | 0.66 | 174.6 | 101.9 |
|      | 35   | 30   |       | 10   |        |      | 5     | 4     |

|          |    |          |     |          |      |
|----------|----|----------|-----|----------|------|
| ADJ BW   | 80 | ADJ WW   | 697 | ADJ YW   | 1266 |
| BW RATIO | 95 | WW RATIO | 99  | YW RATIO | 105  |



If you're gravitating towards these Five Star Jackson J10 sons, and are looking for a serious injection of growth and profitability then there is not a better option then KLER Northern Grit N21. A true standout of the offering when it comes to his ability to sire growth and value genomically, and check out the combination of MARB and REA predictions he offers, a set of figures that should read very attractively to a stockman that intends to retain ownership all the way through to the rail. The maternal granddam of Lot 21 has been a very productive cow for KBHR, and we are excited to see what K287 is bound for in St. Charles.

21

## KLER NORTHERN GRIT N21

TATTOO: N21 | DOB: 1/1/25 | ASA: 4536615 | BREED: PB SM

HOOK'S FULL FIGURES 11F  
**FIVE STAR JACKSON J10**  
 KBHR F316  
 MR SR RED OCTOBER G1761  
**KBHR MS RED OCTOBER K287**  
 KBHR H256 MS BEST LADY

|          |     |          |     |          |      |
|----------|-----|----------|-----|----------|------|
| ADJ BW   | 84  | ADJ WW   | 810 | ADJ YW   | 1393 |
| BW RATIO | 100 | WW RATIO | 112 | YW RATIO | 106  |

HOMOZYGOUS POLLED > HETEROZYGOUS BLACK

| CE   | BW  | WW   | YW    | ADG  | MCE | MILK | MWW  |
|------|-----|------|-------|------|-----|------|------|
| 10.2 | 0.7 | 96.1 | 144.9 | 0.31 | 9.3 | 32.9 | 80.9 |
|      | 40  | 10   | 10    | 20   | 10  | 5    | 2    |

| STAY | DOC  | CW   | YG    | MARB | BF     | REA  | API   | TI    |
|------|------|------|-------|------|--------|------|-------|-------|
| 17.4 | 12.4 | 52.1 | -0.28 | 0.78 | -0.055 | 1.01 | 177.3 | 107.8 |
|      | 30   | 45   | 10    |      | 2      | 25   | 4     | 1     |



The homozygous black option from the Five Star Jackson J10 brothers is KLER Blackjack N71, and this purebred herd bull prospect has more to offer then just being the source of consistent hide color. You can trust that you will be having a low stress calving season through his service, and an increase in carcass quality through his impressive marbling predictions. We have been really impressed with the maternal quality of our J10 daughters, and feel like he has the ability to sire progeny of either sex that will supply both long- and short-term opportunities for profitability.

22

## KLER BLACKJACK N71

TATTOO: N71 | DOB: 2/3/25 | ASA: 4536728 | BREED: PB SM

HOOK'S FULL FIGURES 11F  
**FIVE STAR JACKSON J10**  
 KBHR F316  
 EC REBEL 156F  
**KLER/GANA LORETTA L010**  
 WRS HEAT 'N UP H010

|          |    |          |     |          |      |
|----------|----|----------|-----|----------|------|
| ADJ BW   | 82 | ADJ WW   | 711 | ADJ YW   | 1243 |
| BW RATIO | 97 | WW RATIO | 100 | YW RATIO | 100  |

POLLED > HOMOZYGOUS BLACK

| CE   | BW  | WW   | YW    | ADG  | MCE | MILK | MWW  |
|------|-----|------|-------|------|-----|------|------|
| 11.4 | 0.1 | 72.6 | 108.0 | 0.22 | 9.6 | 25.7 | 61.9 |
|      | 35  | 30   |       |      | 5   | 30   |      |

| STAY | DOC | CW   | YG    | MARB | BF     | REA  | API   | TI   |
|------|-----|------|-------|------|--------|------|-------|------|
| 13.4 | 9.1 | 24.0 | -0.33 | 0.48 | -0.054 | 0.81 | 146.1 | 86.4 |
|      |     |      |       | 15   |        |      | 30    | 35   |



**KLER/GANA LORETTA L010**  
 DAM OF LOT 22





23

## KLER/SV OLYMPIC OUTLAW 5028N

TATTOO: 5028N | DOB: 1/19/25 | ASA: 4490016 | BREED: 3/4 SM 1/4 AN

RUBYS TURNPIKE 771E  
KLER PROMOTER G15  
GW MISS GPRD 028X  
GW ROBUST 605Z  
KMJ/K-LER MS ROBUST D336  
CCR MS SINGLETARY 3000A

HOMOZYGOUS POLLED > HOMOZYGOUS BLACK

| CE  | BW  | WW    | YW    | ADG  | MCE | MILK | MWW  |
|-----|-----|-------|-------|------|-----|------|------|
| 6.3 | 3.6 | 103.8 | 163.6 | 0.37 | 2.8 | 20.2 | 72.0 |
|     |     | 2     | 3     | 10   |     |      | 15   |

| STAY | DOC  | CW   | YG    | MARB | BF     | REA  | API   | TI   |
|------|------|------|-------|------|--------|------|-------|------|
| 13.9 | 14.7 | 49.6 | -0.37 | 0.53 | -0.044 | 1.32 | 137.7 | 96.8 |
|      | 25   | 20   | 10    | 35   | 35     | 1    | 45    | 10   |

KMJ/K-LER MS ROBUST D336  
DAM OF LOT 23 & 24



The maternal source responsible for this pair of brothers needs little introduction to followers of the K-LER brand. KMJ/K-LER Ms Robust D336 has been a long term supplier of the right kind, her progeny come with an extra shot of substance and ruggedness, while still offering plenty of value from a genomic standpoint. If you are looking for a bull to inject a serious amount of growth and performance than you are in the right place.



24

## KLER/SV HEAVY HAMMER 5033N

TATTOO: 5033N | DOB: 1/21/25 | ASA: 4490018 | BREED: 3/4 SM 1/4 AN

RUBYS TURNPIKE 771E  
KLER PROMOTER G15  
GW MISS GPRD 028X  
GW ROBUST 605Z  
KMJ/K-LER MS ROBUST D336  
CCR MS SINGLETARY 3000A

HOMOZYGOUS POLLED > HOMOZYGOUS BLACK

| CE  | BW  | WW    | YW    | ADG  | MCE | MILK | MWW  |
|-----|-----|-------|-------|------|-----|------|------|
| 7.2 | 2.4 | 102.8 | 166.8 | 0.40 | 4.6 | 20.2 | 71.6 |
|     |     | 2     | 2     | 3    |     |      | 15   |

| STAY | DOC  | CW   | YG    | MARB | BF     | REA  | API   | TI   |
|------|------|------|-------|------|--------|------|-------|------|
| 14.2 | 17.5 | 48.8 | -0.36 | 0.49 | -0.056 | 1.21 | 140.2 | 97.2 |
|      | 5    | 25   | 10    | 40   | 25     | 2    | 45    | 10   |

KLER LILLIES LOVE 3134L  
MATERNAL SISTER TO LOT 23 & 24



These full brothers from the KLER Promoter G15 and KMJ/K-LER Ms Robust D336 flush are wound for sound then it comes to their ability to inject significant growth and performance! Their elite WW, YW, ADG, MWW, CW, YG, REA, and TI figures are all indications that they are set to inject a potent shot of roar pounds and power.



25

## KLER NINE MILE N50

TATTOO: N50 | DOB: 1/14/25 | ASA: 4536629 | BREED: PB SM

RUBYS TURNPIKE 771E  
KLER PROMOTER G15  
GW MISS GPRD 028X  
SVF STEEL FORCE S701  
KLER HOYA'S FORCE 929G  
K-LER/RC MISS KANSA 414B

HOMOZYGOUS POLLED > HETEROZYGOUS BLACK

| CE  | BW  | WW   | YW    | ADG  | MCE | MILK | MWW  |
|-----|-----|------|-------|------|-----|------|------|
| 7.2 | 3.7 | 92.3 | 145.6 | 0.33 | 3.4 | 16.8 | 62.8 |
|     |     | 15   | 10    | 10   |     |      |      |

| STAY | DOC | CW   | YG    | MARB | BF     | REA  | API   | TI   |
|------|-----|------|-------|------|--------|------|-------|------|
| 10.0 | 7.3 | 44.2 | -0.44 | 0.16 | -0.086 | 1.14 | 120.0 | 85.5 |
|      |     | 20   | 20    |      | 25     | 10   |       | 35   |

KLER TRUE BUILT 3011L  
\$12,000 MATERNAL BROTHER  
TO LOT 25





**KLER LORNA 3068L**  
MATERNAL SISTER TO LOT 26

26

## KLER NEVERMORE N76

TATTOO: N76 | DOB: 2/7/25 | ASA: 4536638 | BREED: PB SM

LCDR PROGRESSIVE 106G  
**SWAIN PHENOM C303L**  
RUBY SWC YETTI 8F25  
HOOKS SHEAR FORCE 38K  
**KMJ/K-LER MS SFORCE C108**  
CCR 602M L ONE 7116T

HOMOZYGOUS POLLED > HOMOZYGOUS BLACK

| CE   | BW   | WW   | YW    | ADG  | MCE | MILK | MWW  |
|------|------|------|-------|------|-----|------|------|
| 16.5 | -3.1 | 66.3 | 103.8 | 0.23 | 9.8 | 28.2 | 61.3 |
| 5    | 3    |      |       |      | 4   | 20   |      |

| STAY | DOC  | CW   | YG    | MARB | BF     | REA  | API   | TI   |
|------|------|------|-------|------|--------|------|-------|------|
| 15.9 | 13.7 | 36.2 | -0.31 | 0.52 | -0.057 | 0.87 | 164.2 | 88.8 |
| 45   | 30   | 40   |       | 10   |        |      | 10    | 30   |

|          |    |          |     |          |      |
|----------|----|----------|-----|----------|------|
| ADJ BW   | 61 | ADJ WW   | 709 | ADJ YW   | 1241 |
| BW RATIO | 72 | WW RATIO | 98  | YW RATIO | 98   |

A well-balanced purebred herd bull candidate that should make plenty of friends in the pens on sale day. This elite calving ease son of Swain Phenom C303L leads off a set of paternal brothers that combine a lot of positives together in a well-balanced package. You will be able to find bulls that combine it all from an EPD perspective: calving ease, growth, maternal, and carcass. A maternal sister to this Mr. Do It All now works for S Equal Cattle Company of Colorado.



**SWAIN PHENOM C303L**  
SIRE OF LOT 26-31

27

## KLER NOTCH N98

TATTOO: N98 | DOB: 2/24/25 | ASA: 4536660 | BREED: PB SM

LCDR PROGRESSIVE 106G  
**SWAIN PHENOM C303L**  
RUBY SWC YETTI 8F25  
LRS ELEVATE 213B  
**K-LER EMERALD 739E**  
K-LER/EKRD BABY BREATH

POLLED > BLACK

| CE   | BW   | WW   | YW    | ADG  | MCE | MILK | MWW  |
|------|------|------|-------|------|-----|------|------|
| 18.0 | -2.7 | 79.2 | 124.5 | 0.28 | 9.6 | 27.4 | 66.9 |
| 3    | 4    |      | 40    | 35   | 5   | 25   | 35   |

| STAY | DOC  | CW   | YG    | MARB | BF     | REA  | API   | TI   |
|------|------|------|-------|------|--------|------|-------|------|
| 13.1 | 10.0 | 38.6 | -0.35 | 0.22 | -0.070 | 0.93 | 149.0 | 88.9 |
|      |      | 35   |       | 45   |        | 40   | 25    | 30   |

|          |    |          |     |          |      |
|----------|----|----------|-----|----------|------|
| ADJ BW   | 71 | ADJ WW   | 699 | ADJ YW   | 1316 |
| BW RATIO | 84 | WW RATIO | 99  | YW RATIO | 107  |

KLER Notch N98 comes well-constructed in his skeletal lines and sound in his build, he is another showcase of why we think you will like these Swain Phenom C303L sons from a longevity of build standpoint. He reads sleep all night elite calving ease and yet still records above average YW predictions and carcass merit!



**KLER MRT UNLIMITED M114**  
MATERNAL BROTHER TO LOT 28

28

## KLER MRT CURE ALL N113

TATTOO: N113 | DOB: 3/9/25 | ASA: 4536674 | BREED: PB SM

LCDR PROGRESSIVE 106G  
**SWAIN PHENOM C303L**  
RUBY SWC YETTI 8F25  
KBHR REVOLUTION H071  
**KLER LADY LUCK 2114K**  
KMJ/K-LER MS ROBUST D336

HOMOZYGOUS POLLED > HOMOZYGOUS BLACK

| CE  | BW  | WW    | YW    | ADG  | MCE | MILK | MWW  |
|-----|-----|-------|-------|------|-----|------|------|
| 7.9 | 2.0 | 112.9 | 182.1 | 0.43 | 5.3 | 25.4 | 81.7 |
|     |     | 1     | 1     | 1    |     | 35   | 2    |

| STAY | DOC  | CW   | YG    | MARB | BF     | REA  | API   | TI    |
|------|------|------|-------|------|--------|------|-------|-------|
| 12.8 | 16.4 | 71.8 | -0.20 | 0.33 | -0.039 | 1.13 | 146.8 | 104.6 |
|      | 10   | 1    |       | 25   |        | 10   | 30    | 2     |

|          |     |          |     |          |      |
|----------|-----|----------|-----|----------|------|
| ADJ BW   | 91  | ADJ WW   | 719 | ADJ YW   | 1332 |
| BW RATIO | 108 | WW RATIO | 102 | YW RATIO | 109  |

We swing the other direction here with one of the most elite growth bulls in the entire offering, with monster WW and YW figures, this beast is set to unleash serious amounts of performance to his offspring. His dam KLER Lady Luck 2114K is headed towards the stars, and reigns from the maternal powers of the trusted D336 matron. He is a maternal brother to the KLER MRT Unlimited M114 bull that Lucas Laufenberg entrusted last year. Only bid here if you are looking to add legitimate growth and terminal excellence to your cowherd.





**MISS WERNING KP 8543U**  
LEGENDARY MATERNAL GRANDDAM OF LOT 29

29

## KLER NEATO N117

TATTOO: N117 | DOB: 3/12/25 | ASA: 4536677 | BREED: PB SM

LCDR PROGRESSIVE 106G  
**SWAIN PHENOM C303L**  
RUBY SWC YETTI 8F25  
SO REMEDY 7F  
**MOORE HAILEY 3K**  
MISS WERNING KP 8543U

POLLED > BLACK

| CE   | BW   | WW   | YW    | ADG  | MCE  | MILK | MWW  |
|------|------|------|-------|------|------|------|------|
| 16.1 | -2.4 | 74.2 | 111.9 | 0.24 | 10.2 | 29.6 | 66.7 |
| 10   | 5    |      |       |      | 3    | 15   | 35   |

| STAY | DOC  | CW   | YG    | MARB  | BF     | REA  | API   | TI   |
|------|------|------|-------|-------|--------|------|-------|------|
| 14.4 | 12.8 | 27.8 | -0.36 | -0.03 | -0.069 | 0.84 | 131.7 | 79.0 |
|      | 40   |      |       |       |        |      |       |      |

|          |     |          |     |          |      |
|----------|-----|----------|-----|----------|------|
| ADJ BW   | 84  | ADJ WW   | 696 | ADJ YW   | 1327 |
| BW RATIO | 100 | WW RATIO | 107 | YW RATIO | 118  |

KLER Neato N117 is a calving easy specialist sired by the Swain Phenom C303L herd bull that stems from the likes of the legendary \$8+ million Miss Werning KP 8543U through a SO Remedy 7F daughter that is built for speed! What is most impressive is the growth curve that N117 experienced after his birth, swinging towards a 107 WWR and 118 YWR. He trends favorably both on paper and in the flesh.



**KLER SMALL EAGLE M82**  
MATERNAL BROTHER TO LOT 30

30

## KLER SMALL NEXUS N70

TATTOO: N70 | DOB: 2/2/25 | ASA: 4536637 | BREED: PB SM

LCDR PROGRESSIVE 106G  
**SWAIN PHENOM C303L**  
RUBY SWC YETTI 8F25  
VCL FORESIGHT  
**KLER MS DOLLY'S LADY 036J**  
K-LER DOLLY'S LADY 810F

HOMOZYGOUS POLLED > HOMOZYGOUS BLACK

| CE   | BW   | WW   | YW    | ADG  | MCE | MILK | MWW  |
|------|------|------|-------|------|-----|------|------|
| 13.3 | -2.4 | 82.5 | 123.2 | 0.25 | 7.9 | 28.4 | 69.5 |
| 20   | 5    | 40   | 40    |      | 20  | 20   | 25   |

| STAY | DOC  | CW   | YG    | MARB | BF     | REA  | API   | TI   |
|------|------|------|-------|------|--------|------|-------|------|
| 14.6 | 12.9 | 42.8 | -0.24 | 0.38 | -0.048 | 0.82 | 153.7 | 93.2 |
|      | 35   | 25   |       | 20   |        |      | 20    | 20   |

|          |    |          |     |          |      |
|----------|----|----------|-----|----------|------|
| ADJ BW   | 74 | ADJ WW   | 784 | ADJ YW   | 1406 |
| BW RATIO | 88 | WW RATIO | 111 | YW RATIO | 114  |

KLER Small Nexus N70 is a long, and shapely bull that offers an array of qualities to the marketplace from a genomics standpoint. He stems back to the powerful K-LER Dolly's Lady 810F donor that has been a strong force and has multiple daughters working on the front end our cowherd. He comes with one of the most versatile sets of EPD's in the offering, and is bolstered by his elite rankings for longevity and calving ease. When a bull combines looks and genetic profile, the options are truly unlimited.



**KLER GREATER GOOD 2064K**  
MATERNAL BROTHER TO LOT 31 & SIRE  
OF LOT 32-35

31

## KLER SMALL NOX N77

TATTOO: N77 | DOB: 2/8/25 | ASA: 4536639 | BREED: PB SM

LCDR PROGRESSIVE 106G  
**SWAIN PHENOM C303L**  
RUBY SWC YETTI 8F25  
W/C EXECUTIVE ORDER 8543B  
**HS/HLF4 GINGERSNAP**  
HS QUEEN ELECTRA

POLLED > HETEROZYGOUS BLACK

| CE   | BW   | WW   | YW    | ADG  | MCE  | MILK | MWW  |
|------|------|------|-------|------|------|------|------|
| 19.0 | -2.7 | 83.1 | 127.3 | 0.28 | 10.9 | 26.2 | 67.6 |
| 2    | 4    | 35   | 35    | 35   | 2    | 30   | 30   |

| STAY | DOC | CW   | YG    | MARB | BF     | REA  | API   | TI   |
|------|-----|------|-------|------|--------|------|-------|------|
| 14.1 | 8.0 | 38.5 | -0.28 | 0.31 | -0.054 | 0.82 | 158.0 | 93.0 |
|      |     | 35   |       | 30   |        |      | 15    | 20   |

|          |    |          |     |          |      |
|----------|----|----------|-----|----------|------|
| ADJ BW   | 73 | ADJ WW   | 700 | ADJ YW   | 1249 |
| BW RATIO | 87 | WW RATIO | 99  | YW RATIO | 102  |

Sleep all night heifer bull selling here! There is no doubt that KLER Small Nox N77 is one that you can trust to sire stress free calving seasons. His elite combination of CE, BW and CED is certainly impressive, yet is just the beginning of his impressive slate of performance indicators. He is a maternal brother to our resident herd bull KLER Greater Good 2064K, so there is no more damning evidence of our belief in his potential from a cow family standpoint.



**KLER LETS GO BARBIE 2031K**  
DAM OF LOT 32 & 33

32

## KLER TP PLAY MAKER 561N

TATTOO: 561N | DOB: 3/18/25 | ASA: 4608081 | BREED: PB SM

KLER PROMOTER G15  
**KLER GREATER GOOD 2064K**  
HS/HLF4 GINGERSNAP  
CDI TRUSTEE 387F  
**KLER LETS GO BARBIE 2031K**  
K-LER BARBIE 455B

HOMOZYGOUS POLLED > BLACK

| CE  | BW  | WW   | YW    | ADG  | MCE | MILK | MWW  |
|-----|-----|------|-------|------|-----|------|------|
| 6.2 | 2.5 | 94.9 | 148.2 | 0.33 | 3.3 | 18.7 | 66.1 |
|     |     | 10   | 10    | 10   |     |      | 40   |

| STAY | DOC | CW   | YG    | MARB | BF     | REA  | API   | TI   |
|------|-----|------|-------|------|--------|------|-------|------|
| 12.3 | 9.6 | 47.6 | -0.42 | 0.10 | -0.096 | 1.06 | 120.6 | 85.3 |
|      |     | 15   | 25    |      | 15     | 15   |       | 40   |

|          |    |          |     |          |      |
|----------|----|----------|-----|----------|------|
| ADJ BW   | 81 | ADJ WW   | 807 | ADJ YW   | 1348 |
| BW RATIO | ET | WW RATIO | ET  | YW RATIO | ET   |

We move back into a set of growth bulls with the sons of KLER Greater Good 2064K with a pair of full brothers from the KLER Lets Go Barbie 2031K donor that stems to the maternal powers of the impressive K-LER Barbie 455B matron who has had a strong influence on the cowherd. If your goals are to add potent pounds to the bottom-line of your calf crop then your interest here is well warranted, as both of these brothers come with the genetics potential to increase scale pressure in a very impressive fashion. Top 10% rankings for WW, YW and ADG across the board, and top 15% for CW and REA, this pair offer impressive consistency and would make a great pair to turn out together in a multi-sire pasture to increase consistency. Greater Good sired bulls averaged over \$11,500 in the 2025 sale.



**K-LER BARBIE 455B**  
MATERNAL GRANDDAM OF LOT 32 & 33

33

## KLER TP BULLDOZER 560N

TATTOO: 560N | DOB: 3/25/25 | ASA: 4608080 | BREED: PB SM

KLER PROMOTER G15  
**KLER GREATER GOOD 2064K**  
HS/HLF4 GINGERSNAP  
CDI TRUSTEE 387F  
**KLER LETS GO BARBIE 2031K**  
K-LER BARBIE 455B

HOMOZYGOUS POLLED > BLACK

| CE  | BW  | WW   | YW    | ADG  | MCE | MILK | MWW  |
|-----|-----|------|-------|------|-----|------|------|
| 6.2 | 2.5 | 94.9 | 148.2 | 0.33 | 3.3 | 18.7 | 66.1 |
|     |     | 10   | 10    | 10   |     |      | 40   |

| STAY | DOC | CW   | YG    | MARB | BF     | REA  | API   | TI   |
|------|-----|------|-------|------|--------|------|-------|------|
| 12.3 | 9.6 | 47.6 | -0.42 | 0.10 | -0.096 | 1.06 | 120.6 | 85.3 |
|      |     | 15   | 25    |      | 15     | 15   |       | 40   |

|          |    |          |     |          |      |
|----------|----|----------|-----|----------|------|
| ADJ BW   | 80 | ADJ WW   | 822 | ADJ YW   | 1352 |
| BW RATIO | ET | WW RATIO | ET  | YW RATIO | ET   |





## 34 KLER NASH N81

TATTOO: N81 | DOB: 2/11/25 | ASA: 4536643 | BREED: PB SM

KLER PROMOTER G15  
**KLER GREATER GOOD 2064K**  
 HS/HLF4 GINGERSNAP  
 W/C EXECUTIVE ORDER 8543B  
**K-LER HALLEY'S ARYA 714E**  
 KLER HALLEY

HOMOZYGOUS POLLED > HOMOZYGOUS BLACK

| CE  | BW  | WW   | YW    | ADG  | MCE | MILK | MWW  |
|-----|-----|------|-------|------|-----|------|------|
| 6.0 | 1.2 | 86.8 | 136.5 | 0.31 | 4.0 | 16.9 | 60.2 |
|     |     | 25   | 20    | 20   |     |      |      |

| STAY | DOC | CW   | YG    | MARB | BF     | REA  | API   | TI   |
|------|-----|------|-------|------|--------|------|-------|------|
| 12.0 | 7.4 | 44.6 | -0.42 | 0.24 | -0.097 | 0.99 | 128.7 | 86.8 |
|      |     | 20   | 25    | 40   | 15     | 25   |       | 35   |

|          |     |          |     |          |      |
|----------|-----|----------|-----|----------|------|
| ADJ BW   | 88  | ADJ WW   | 616 | ADJ YW   | 1159 |
| BW RATIO | 105 | WW RATIO | 87  | YW RATIO | 95   |

Here is a maternal brother to the impressive AI sire, KLER Mr Elevation 079H, a high seller out of this program that has seen use across the nation. Stemming from the K-LER Halley's Arya 714E female that has had a long serving tenure for the KLER program, this is a cow family that you can entrust for not just performance, but longevity and maternal quality.



## 35 KLER NAUTICA N12

TATTOO: N12 | DOB: 1/1/25 | ASA: 4536612 | BREED: PB SM

KLER PROMOTER G15  
**KLER GREATER GOOD 2064K**  
 HS/HLF4 GINGERSNAP  
 CDI AUTHORITY 77X  
**ES E130**  
 ES A117

HOMOZYGOUS POLLED > RED

| CE  | BW  | WW   | YW    | ADG  | MCE | MILK | MWW  |
|-----|-----|------|-------|------|-----|------|------|
| 4.5 | 3.4 | 79.5 | 127.5 | 0.30 | 3.0 | 22.3 | 61.9 |
|     |     |      | 35    | 25   |     |      |      |

| STAY | DOC  | CW   | YG    | MARB | BF     | REA  | API   | TI   |
|------|------|------|-------|------|--------|------|-------|------|
| 10.4 | 10.1 | 34.7 | -0.33 | 0.28 | -0.051 | 0.96 | 118.8 | 80.6 |
|      |      | 45   |       | 35   |        | 35   |       |      |

|          |     |          |     |          |      |
|----------|-----|----------|-----|----------|------|
| ADJ BW   | 88  | ADJ WW   | 702 | ADJ YW   | 1303 |
| BW RATIO | 105 | WW RATIO | 97  | YW RATIO | 97   |

A purebred, homozygous polled stud that comes with added maturity, and will be ready to see cows early and often. This KLER Greater Good 2064K son comes with the advantages of adding pounds, and will do so through adding length of body and muscle expression. A good option to add punch and shape to a British blooded set of cows, who will also grant the advantages of hybrid vigor.

**ES E130**  
 DAM OF LOT 35



## 36 KIK KLER NEMO N177

TATTOO: N177 | DOB: 3/10/25 | ASA: 4580081 | BREED: PB SM

HTP/SVF DURACELL T52  
**HPF QUANTUM LEAP Z952**  
 RP/MP RIGHT TO LOVE 015U  
 CDI ABUNDANCE 391C  
**ES G177**  
 ES B34

HOMOZYGOUS POLLED > RED

| CE  | BW  | WW   | YW    | ADG  | MCE | MILK | MWW  |
|-----|-----|------|-------|------|-----|------|------|
| 5.4 | 3.2 | 93.0 | 134.2 | 0.26 | 2.9 | 19.8 | 66.2 |
|     |     | 15   | 25    | 45   |     |      | 35   |

| STAY | DOC | CW   | YG    | MARB | BF     | REA  | API   | TI   |
|------|-----|------|-------|------|--------|------|-------|------|
| 7.5  | 6.9 | 57.5 | -0.45 | 0.35 | -0.099 | 1.23 | 122.0 | 90.4 |
|      |     | 4    | 20    | 25   | 15     | 4    |       | 25   |

|          |     |          |     |          |      |
|----------|-----|----------|-----|----------|------|
| ADJ BW   | 86  | ADJ WW   | 704 | ADJ YW   | 1332 |
| BW RATIO | 103 | WW RATIO | 100 | YW RATIO | 100  |

You will find advantages of this red hided HPF Quantum Leap Z952 on either side of the hide, as he offers a dynamic combination of quality. KIK KLER Nemo N177 comes with a bold body shape and is really correct in his structural build, with good foot shape and angularity. The numeric roster reads equally or even more impressively with additions of growth across the board, carcass yield and carcass quality.

**HPF QUANTUM LEAP Z952**  
 SIRE OF LOT 36





There is just a pair of these BAS Money Maker J801 sons to sell this year but they will be ones you need to go and find. Their appropriately named sire works for Select Sires and currently records 11 traits in the top 10% of the breed, with 6 of them being top 1%, he is a sire that has a lot to offer, and we feel the same way about both of these sons! Of the duo, KLER Napster N45 comes with a little more advantage from a calving ease standpoint, and looks to increase shape and power in the flesh. He is an absolute hoss that reads with a lot of quality on the hoof and has been a leader of the pack in his contemporary group and is maturing impressively. His high end API prediction is among the elite of not just this offering but the breed registry! He has a lot to offer stockmen regardless of their production goals.



**BAS MONEY MAKER J801**  
SIRE OF LOT 37 & 38

37

## KLER NAPSTER N45

TATTOO: N45 | DOB: 1/10/25 | ASA: 4536625 | BREED: PB SM

HOOK'S EAGLE 6E  
**BAS MONEY MAKER J801**  
BAS MISS BEACON F801  
HHS MR 866D  
**KBHR MS 866D K266**  
KBHR G024 MS HIGH ROAD

HOMOZYGOUS POLLED > HOMOZYGOUS BLACK

| CE   | BW   | WW    | YW    | ADG  | MCE | MILK | MWW  |
|------|------|-------|-------|------|-----|------|------|
| 11.9 | -1.5 | 100.0 | 163.4 | 0.40 | 6.9 | 23.3 | 73.2 |
| 30   | 15   | 4     | 2     | 1    | 30  |      | 15   |

| STAY | DOC  | CW   | YG    | MARB | BF     | REA  | API   | TI    |
|------|------|------|-------|------|--------|------|-------|-------|
| 15.6 | 10.6 | 51.5 | -0.27 | 0.63 | -0.022 | 1.21 | 175.9 | 109.3 |
|      |      | 10   |       | 5    |        | 5    | 4     | 1     |

|          |     |          |     |          |      |
|----------|-----|----------|-----|----------|------|
| ADJ BW   | 86  | ADJ WW   | 740 | ADJ YW   | 1411 |
| BW RATIO | 102 | WW RATIO | 102 | YW RATIO | 100  |



Cashing bigger checks is what you will be doing once you send the KLER Cashin Checks N34 progeny off to market, as this elite genomic stud offers a wide array of advantages across the board to modern beef producers. He checks boxes all the way across this genetic portfolio, and offers up a scenario that most would believe is too good to be true, but with the power of high quality genetics, we are learning that anything is possible. Stockmen and women should be impressed with not just the data package though, as an in-person inspection will reveal that this powerhouse has the build to back up the hype and was reflected with his impressive 800lbs. plus weaning weight.

38

## KLER CASHIN CHECKS N34

TATTOO: N34 | DOB: 1/5/25 | ASA: 4519223 | BREED: PB SM

HOOK'S EAGLE 6E  
**BAS MONEY MAKER J801**  
BAS MISS BEACON F801  
FIVE STAR JACKSON J10  
**KLER SERENA DANCE 3028L**  
KLER SERENA G14

HOMOZYGOUS POLLED > BLACK

| CE   | BW   | WW    | YW    | ADG  | MCE | MILK | MWW  |
|------|------|-------|-------|------|-----|------|------|
| 10.4 | -1.0 | 102.9 | 162.7 | 0.37 | 7.3 | 29.8 | 81.1 |
| 45   | 15   | 2     | 2     | 3    | 25  | 15   | 2    |

| STAY | DOC  | CW   | YG    | MARB | BF     | REA  | API   | TI    |
|------|------|------|-------|------|--------|------|-------|-------|
| 16.2 | 16.8 | 59.9 | -0.39 | 0.61 | -0.049 | 1.48 | 173.8 | 110.5 |
| 45   | 5    | 3    | 40    | 10   |        | 1    | 5     | 1     |

|          |     |          |     |          |      |
|----------|-----|----------|-----|----------|------|
| ADJ BW   | 79  | ADJ WW   | 810 | ADJ YW   | 1251 |
| BW RATIO | 106 | WW RATIO | 100 | YW RATIO | 100  |



**KLER SERENA DANCE 3028L**  
\$17,000 DAM OF LOT 38





A calving ease specialist from the popular TJ Chief 460G sire that is also homozygous polled and built for high work ethic and a long breeding tenure. He stems from a CDI Legendary 364D daughter that was purchased from the Eichacker program of South Dakota that looks like she is going to fit right in here in St. Charles. Good beef bull that is solid in his foundations and will not push a rancher over the edge in any area, but just keep things headed in the right direction.



**TJ CHIEF 460G**  
SIRE OF LOT 39

## 39 KIK KLER NAPA N32

TATTOO: N32 | DOB: 2/21/25 | ASA: 4580080 | BREED: 3/4 SM 1/4 AN

TJ FROSTY 318E  
**TJ CHIEF 460G**  
TJ 52A  
CDI LEGENDARY 364D  
**ES H32**  
ES F106

HOMOZYGOUS POLLED > HETEROZYGOUS BLACK

| CE   | BW   | WW   | YW   | ADG  | MCE | MILK | MWW  |
|------|------|------|------|------|-----|------|------|
| 13.3 | -2.7 | 62.2 | 84.0 | 0.14 | 6.5 | 27.1 | 58.1 |
| 35   | 15   |      |      |      |     | 25   |      |

| STAY | DOC  | CW   | YG    | MARB | BF     | REA  | API   | TI   |
|------|------|------|-------|------|--------|------|-------|------|
| 18.8 | 12.2 | 15.6 | -0.27 | 0.31 | -0.028 | 0.70 | 135.3 | 73.8 |
| 15   |      |      | 25    |      |        | 45   |       |      |

|          |     |          |     |          |      |
|----------|-----|----------|-----|----------|------|
| ADJ BW   | 84  | ADJ WW   | 725 | ADJ YW   | 1188 |
| BW RATIO | 101 | WW RATIO | 100 | YW RATIO | 100  |



A purebred, black hided, homozygous polled son of the \$140,000 W/C Truth Be Told 6038L that highlighted the 2024 Werning Cattle Company Production Sale. He stems from the genetic powers of generations of the most impressive Red Angus cow families in North America, so offers up a different twist to the pedigree, and immense amounts of powerful maternal power. We know he is going to be a phenotype fixer and brood cow maker, and would be a great sire choice if you are looking to retain replacement females from. Maternal sibs sell as Lot 113 and 114.



**W/C TRUTH BE TOLD 6038L**  
SIRE OF LOT 40

## 40 KLER NEXT THREAT N54

TATTOO: N54 | DOB: 1/19/25 | ASA: 4536632 | BREED: PB SM

W/C BEEF KING 1025F  
**W/C TRUTH BE TOLD 6038L**  
W/C MISS WERNING 90G  
W/C DOUBLE DOWN 5014E  
**KLER/H20 MS FAITHFUL 2007K**  
ELLINGSON/STR HOPE H026

HOMOZYGOUS POLLED > HETEROZYGOUS BLACK

| CE  | BW  | WW   | YW    | ADG  | MCE | MILK | MWW  |
|-----|-----|------|-------|------|-----|------|------|
| 6.7 | 1.9 | 75.8 | 106.6 | 0.19 | 5.5 | 16.9 | 54.7 |

| STAY | DOC | CW   | YG    | MARB | BF     | REA  | API   | TI   |
|------|-----|------|-------|------|--------|------|-------|------|
| 10.9 | 2.7 | 32.7 | -0.52 | 0.14 | -0.103 | 1.11 | 114.1 | 76.5 |
|      |     |      | 5     |      | 10     | 10   |       |      |

|          |    |          |     |          |      |
|----------|----|----------|-----|----------|------|
| ADJ BW   | 90 | ADJ WW   | 643 | ADJ YW   | 1108 |
| BW RATIO | ET | WW RATIO | ET  | YW RATIO | ET   |



## 41 KLER/SV BLACK VELVET 5030N

TATTOO: 5030N | DOB: 1/20/25 | ASA: 4490022 | BREED: PB SM

IR IMPERIAL D948  
MR SR RED OCTOBER G1761  
MISS SR E1761  
HOOK'S FULL FIGURES 11F  
FIVE STAR JANAE J9  
KBHR F316

HOMOZYGOUS POLLED > HETEROZYGOUS BLACK

| CE   | BW   | WW   | YW    | ADG  | MCE | MILK | MWW  |
|------|------|------|-------|------|-----|------|------|
| 12.3 | -2.5 | 81.9 | 125.0 | 0.27 | 7.4 | 33.9 | 74.7 |
| 25   | 5    | 40   | 40    | 40   | 25  | 4    | 10   |

| STAY | DOC  | CW   | YG    | MARB | BF     | REA  | API   | TI   |
|------|------|------|-------|------|--------|------|-------|------|
| 16.5 | 14.3 | 29.2 | -0.33 | 0.49 | -0.048 | 0.92 | 163.0 | 96.5 |
| 40   | 20   |      |       | 15   |        | 40   | 15    | 10   |

|          |    |          |     |          |      |
|----------|----|----------|-----|----------|------|
| ADJ BW   | 85 | ADJ WW   | 783 | ADJ YW   | 1257 |
| BW RATIO | ET | WW RATIO | ET  | YW RATIO | ET   |



**KLER JANAE'S SECRET 3158L**  
\$80,000 VALUED FULL SISTER TO LOT 41 & 42

Loaded up with a power pedigree, this pair of stud duck full brothers are ones to find on sale day. They are black hided, purebreds that are both homozygous polled, and full brothers to the high selling, \$80,000 valued KLER Janae's Secret 3158L female that we are now partners on with our good friends at King Cattle Co. This stunning female is an absolute outlier in regards to both phenotype and genomic standards, and offers a very futuristic approach to making better beef quality. While this full sister alone should be enough proof of quality genetic backing, you can add a long list of maternal brothers and sisters that have featured through this sale, and are included in this same book to sell this year. The Five Star Janae J9 donor is headed towards the stars, just like her full brother, the \$65,000 Five Star Jackson J10 AI sire that is gaining traction as a must use profitability increaser. These same trends will be noticed with the genomic profiles that accompany this duo, so dive in here to access a potent source of quality on either side of the hide.



## 42 KLER/SV SMOOTH OPERATOR 5037N

TATTOO: 5037N | DOB: 1/26/25 | ASA: 4490024 | BREED: PB SM

IR IMPERIAL D948  
MR SR RED OCTOBER G1761  
MISS SR E1761  
HOOK'S FULL FIGURES 11F  
FIVE STAR JANAE J9  
KBHR F316

HOMOZYGOUS POLLED > HETEROZYGOUS BLACK

| CE   | BW   | WW   | YW    | ADG  | MCE | MILK | MWW  |
|------|------|------|-------|------|-----|------|------|
| 12.8 | -0.4 | 77.4 | 115.8 | 0.24 | 7.2 | 33.9 | 72.5 |
| 25   | 25   |      |       |      | 25  | 4    | 15   |

| STAY | DOC  | CW   | YG    | MARB | BF     | REA  | API   | TI   |
|------|------|------|-------|------|--------|------|-------|------|
| 18.6 | 14.5 | 24.9 | -0.41 | 0.49 | -0.064 | 0.99 | 162.5 | 91.8 |
| 20   | 20   |      | 30    | 15   |        | 25   | 15    | 20   |

|          |    |          |     |          |      |
|----------|----|----------|-----|----------|------|
| ADJ BW   | 99 | ADJ WW   | 803 | ADJ YW   | 1235 |
| BW RATIO | ET | WW RATIO | ET  | YW RATIO | ET   |



**FIVE STAR JANAE J9**  
DAM OF LOT 41 & 42





**KLER BARBIE L24**  
\$14,000 DAM OF LOT 43



43

## KLER MR N3

TATTOO: N3 | DOB: 1/1/25 | ASA: 4519210 | BREED: PB SM

FIVE STAR JACKSON J10  
**KLER PREMIUM GRADE 3025L**  
KLER SERENITY 926G  
ROCKING P PRIVATE STOCK H010  
**KLER BARBIE L24**  
KLER BARBIES ORDER 970G

HOMOZYGOUS POLLED > BLACK

| CE   | BW   | WW   | YW    | ADG  | MCE | MILK | MWW  |
|------|------|------|-------|------|-----|------|------|
| 13.8 | -0.4 | 87.2 | 130.4 | 0.27 | 8.1 | 22.6 | 66.1 |
| 15   | 25   | 25   | 30    | 40   | 15  |      | 40   |

| STAY | DOC | CW   | YG    | MARB | BF     | REA  | API   | TI   |
|------|-----|------|-------|------|--------|------|-------|------|
| 11.0 | 9.3 | 45.0 | -0.26 | 0.36 | -0.085 | 0.59 | 144.0 | 92.5 |
|      |     | 20   |       | 25   | 25     |      | 35    | 20   |

|          |     |          |     |          |      |
|----------|-----|----------|-----|----------|------|
| ADJ BW   | 77  | ADJ WW   | 815 | ADJ YW   | 1285 |
| BW RATIO | 103 | WW RATIO | 100 | YW RATIO | 100  |

A purebred, calving ease bull with a set of growth numbers that are impressively curve-bending from the advantageous calving ease and birthweight predilections he will sire. For stockmen than need the security of not risking problems at calving season, but still want to gain the advantage of scale pressure at marketing time, then this is the kind to mark for inspection.



44

## KIK KLER NASA N31

TATTOO: N31 | DOB: 2/5/25 | ASA: 4580078 | BREED: 5/8 SM 1/4 AN 1/8 AR

TJ STONE COLD 336G  
**ES LUKA LH72**  
ES H72  
CLRS JEFFERSON 951J  
**ES L31**  
ES J55

HOMOZYGOUS POLLED > HETEROZYGOUS BLACK

| CE   | BW   | WW   | YW   | ADG  | MCE | MILK | MWW  |
|------|------|------|------|------|-----|------|------|
| 15.5 | -2.2 | 59.7 | 90.0 | 0.19 | 7.0 | 23.3 | 53.1 |
| 20   | 20   |      |      |      |     |      |      |

| STAY | DOC  | CW  | YG    | MARB | BF     | REA  | API   | TI   |
|------|------|-----|-------|------|--------|------|-------|------|
| 21.9 | 14.6 | 7.2 | -0.07 | 0.43 | -0.003 | 0.20 | 150.1 | 74.6 |
| 2    | 25   |     |       | 45   |        |      | 30    |      |

|          |    |          |     |          |      |
|----------|----|----------|-----|----------|------|
| ADJ BW   | 80 | ADJ WW   | 709 | ADJ YW   | 1192 |
| BW RATIO | 96 | WW RATIO | 100 | YW RATIO | 100  |

Another strong calving ease option that stems from an Eichacker Simmental bred heifer purchase, that looks like he will sire progression of quality through phenotype, and reads to improve all around profitability to stockmen that plan on retaining females.



**ROCKING P PRIVATE STOCK H010**  
SIRE OF LOT 45



45

## EVENSON PRIVATE STOCK N124

TATTOO: N124 | DOB: 1/28/25 | ASA: 4593210 | BREED: 3/4 SM 1/4 AN

WLE COPACETIC E02  
**ROCKING P PRIVATE STOCK H010**  
RP/MP BUILT TO LOVE A021  
SILVEIRAS STYLE 9303  
**STG LOUELLA L22**  
KENCO LADY REMINGTON

POLLED > BLACK

| CE   | BW  | WW   | YW    | ADG  | MCE | MILK | MWW  |
|------|-----|------|-------|------|-----|------|------|
| 10.6 | 1.4 | 76.1 | 115.8 | 0.25 | 3.8 | 14.5 | 52.4 |

| STAY | DOC | CW   | YG    | MARB | BF     | REA  | API   | TI   |
|------|-----|------|-------|------|--------|------|-------|------|
| 11.3 | 9.3 | 27.1 | -0.10 | 0.36 | -0.044 | 0.20 | 119.2 | 77.0 |
|      |     |      |       |      | 35     |      |       |      |

|          |     |          |     |          |      |
|----------|-----|----------|-----|----------|------|
| ADJ BW   | 85  | ADJ WW   | 708 | ADJ YW   | 1131 |
| BW RATIO | 101 | WW RATIO | 100 | YW RATIO | 100  |

A son of the National Champion Bull, Rocking P Private Stock H010 that stems from a halfblooded, Silveiras Style 9303 daughter. He is built with a structural design that will outlive any tenure, and continues to mature with smoothness and completeness.



46

## KLER FULL CHARGE N145

TATTOO: N145 | DOB: 1/2/25 | ASA: 4536705 | BREED: 1/2 SM 1/2 AN

BRIDLE BIT RESOURCE G9117  
**BRIDLE BIT RECHARGE K256**  
 BRIDLE BIT MISS G948  
 DEER VALLEY OPTIMUM 9246  
**B A R JILT 1744-9246**  
 B A R JILT 9691-5209

|          |    |          |     |          |      |
|----------|----|----------|-----|----------|------|
| ADJ BW   | 78 | ADJ WW   | 683 | ADJ YW   | 1133 |
| BW RATIO | ET | WW RATIO | ET  | YW RATIO | ET   |

HOMOZYGOUS POLLED > HOMOZYGOUS BLACK

| CE   | BW   | WW   | YW    | ADG  | MCE  | MILK | MWW  |
|------|------|------|-------|------|------|------|------|
| 17.2 | -3.6 | 86.2 | 144.6 | 0.37 | 11.0 | 32.8 | 75.9 |
| 10   | 10   | 25   | 15    | 10   | 4    | 3    | 10   |

| STAY | DOC  | CW   | YG   | MARB | BF    | REA  | API   | TI    |
|------|------|------|------|------|-------|------|-------|-------|
| 14.2 | 13.3 | 74.7 | 0.01 | 1.09 | 0.023 | 0.98 | 188.2 | 110.3 |
|      | 45   | 1    |      | 2    |       | 10   | 2     | 1     |



**BRIDLE BIT RECHARGE K256**  
 SIRE OF LOT 46 & 47

We begin the impressive B A R Jilt 1744-9246 sons with a pair of full brothers that are high quality beef. You will be drawn to them just as easily in the sale pens, as you will be intrigued by their genomic package, as these bulls offer a world of talent right the way across their ledger. Genomically there is not much more to desire, with advantages for calving ease, birthweight, growth, maternal and carcass quality and at quite elite level in most cases. Their sire, Bridle Bit Recharge K256 has become the newest force of quality for the CK Cattle and Windy Creek programs of South Dakota, and we understand why after our small sampling as these two sons are good beef, plain and simple. These two will cover all the bases of profitable beef production, and will do so with the cow power and phenotype that gives you strong faith about their ability to add value for a long time to come, in not only the first generation but every one from there on out.



47

## KLER POWER GRID N147

TATTOO: N147 | DOB: 1/4/25 | ASA: 4536707 | BREED: 1/2 SM 1/2 AN

BRIDLE BIT RESOURCE G9117  
**BRIDLE BIT RECHARGE K256**  
 BRIDLE BIT MISS G948  
 DEER VALLEY OPTIMUM 9246  
**B A R JILT 1744-9246**  
 B A R JILT 9691-5209

|          |    |          |     |          |      |
|----------|----|----------|-----|----------|------|
| ADJ BW   | 79 | ADJ WW   | 688 | ADJ YW   | 1297 |
| BW RATIO | ET | WW RATIO | ET  | YW RATIO | ET   |

HOMOZYGOUS POLLED > HOMOZYGOUS BLACK

| CE   | BW   | WW   | YW    | ADG  | MCE  | MILK | MWW  |
|------|------|------|-------|------|------|------|------|
| 19.4 | -2.9 | 93.0 | 159.4 | 0.41 | 11.1 | 32.8 | 79.3 |
| 4    | 15   | 10   | 4     | 2    | 4    | 3    | 3    |

| STAY | DOC  | CW   | YG    | MARB | BF     | REA  | API   | TI    |
|------|------|------|-------|------|--------|------|-------|-------|
| 14.5 | 14.4 | 62.9 | -0.02 | 0.99 | -0.009 | 0.68 | 189.2 | 112.0 |
|      | 30   | 5    |       | 3    |        |      | 2     | 1     |



**BRIDLE BIT MISS G948**  
 PATERNAL GRANDDAM OF LOT 46 & 47





## KLER KCC SURE THING N18

TATTOO: N18 | DOB: 1/10/25 | ASA: 4620448 | BREED: PB AN

G A R HOME TOWN  
**ABERAN CHURCHILL 034J**  
 GVC JACEE E084  
 DEER VALLEY OPTIMUM 9246  
**B A R JILT 1744-9246**  
 B A R JILT 9691-5209

HOMOZYGOUS POLLED > HOMOZYGOUS BLACK

| CE   | BW   | WW   | YW    | ADG  | MCE  | MILK | MWW  |
|------|------|------|-------|------|------|------|------|
| 19.3 | -2.6 | 88.8 | 154.6 | 0.41 | 12.6 | 31.3 | 75.8 |
| 4    | 15   | 20   | 10    | 2    | 1    | 10   | 10   |

| CE | BW   | WW | YW  | DMI  | HP   | CEM | Milk | MW |
|----|------|----|-----|------|------|-----|------|----|
| 15 | -1.6 | 89 | 145 | 0.95 | 14.4 | 12  | 27   | 88 |
| 2  | 7    | 22 |     | 9    | 6    |     | 29   |    |

|          |    |          |     |          |      |
|----------|----|----------|-----|----------|------|
| ADJ BW   | 65 | ADJ WW   | 786 | ADJ YW   | 1253 |
| BW RATIO | ET | WW RATIO | ET  | YW RATIO | ET   |

| STAY | DOC  | CW   | YG   | MARB | BF    | REA  | API   | TI    |
|------|------|------|------|------|-------|------|-------|-------|
| 13.7 | 13.6 | 69.1 | 0.21 | 1.24 | 0.049 | 0.51 | 175.8 | 101.2 |
| 65   | 40   | 2    | 99   | 1    | 99    | 80   | 5     | 5     |

| CW | MARB | RE   | FAT   | \$M | \$W | \$F | \$G | \$B | \$C |
|----|------|------|-------|-----|-----|-----|-----|-----|-----|
| 61 | 0.99 | 0.47 | 0.049 | 104 | 87  | 123 | 106 | 230 | 402 |
|    | 30   |      |       | 2   | 10  | 10  | 3   | 3   | 1   |

There has never been a more appropriate time to invest in high quality genetics. Quality is exactly what you will find here, as KLER KCC Sure Thing N18 is one of the most elite specimens we have raised to date, regardless of breed. This son of Aberan Churchill 034J checks boxes all the way across his genetic and phenotypic profiles, and leaves little to be desired regardless of what your goals may be in production! N18 has emerged as a leader of the pack, in person you will find an extra stout featured, big barreled, wide ended and high-end beef bull, yet it has taken an impressive maturity pattern to end up in this spot, as he came very appropriately with 65lbs. at birth, and only exploded from there on out. While his genetically enhanced data set promotes him to being a sleep all night calving ease sire, there is still no question that his influence will potentially inject mass improvements of growth and performance genetics into an operation with goals of increasing scale pressure. The profitability indexes are impressive here, he offers a genetic profile that is going to bolster improvements throughout the cowherd.



**B A R JILT 1744-9246**  
 DAM OF LOT 46-52



49

## KLER KCC PRESTIGE M500

TATTOO: M500 | DOB: 11/15/24 | AAA: 21379158 | BREED: PB AN

CONNEALY CONFIDENCE PLUS  
BOYD PROMINENT 1043  
BOYD ROSETTA 4058  
DEER VALLEY OPTIMUM 9246  
B A R JILT 1744-9246  
B A R JILT 9691-5209

HOMOZYGOUS POLLED > HOMOZYGOUS BLACK

| CE | BW   | WW | YW  | DMI  | HP   | CEM | Milk | MW |
|----|------|----|-----|------|------|-----|------|----|
| 11 | -0.7 | 68 | 126 | 1.28 | 12.9 | 11  | 30   | 42 |

| CW | MARB | RE   | FAT   | \$M | \$W | \$F | \$G | \$B | \$C |
|----|------|------|-------|-----|-----|-----|-----|-----|-----|
| 55 | 1.30 | 0.72 | 0.071 | 91  | 77  | 106 | 81  | 188 | 335 |
|    |      |      |       | 10  | 25  | 30  | 15  | 20  | 10  |

|          |    |          |     |          |      |
|----------|----|----------|-----|----------|------|
| ADJ BW   | 78 | ADJ WW   | 667 | ADJ YW   | 1124 |
| BW RATIO | ET | WW RATIO | ET  | YW RATIO | ET   |

A son of Boyd Prominent 1043 from the high-powered B A R Jilt 1744-9246 donor that is revealing her potential this year with a set of sons that will knock your socks off. The genomic predictions to increase whole herd profit and quality are impressive, and the versatility value of this stud offers him up as a herd bull that will be a cowherd improver.



BOYD PROMINENT 1043  
SIRE OF LOT 49



50

## KLER KCC ALL RISE N1500

TATTOO: N1500 | DOB: 1/31/25 | ASA: 4536718 | BREED: PB AN

HOFFMAN STAGECOACH 1908  
STELLPFLUG HOFFMAN RISEABOVE  
HOFFMAN 3210 RITA LADY 0256  
DEER VALLEY OPTIMUM 9246  
B A R JILT 1744-9246  
B A R JILT 9691-5209

HOMOZYGOUS POLLED > HOMOZYGOUS BLACK

| CE   | BW   | WW    | YW    | ADG  | MCE  | MILK | MWW  |
|------|------|-------|-------|------|------|------|------|
| 20.3 | -1.9 | 104.8 | 162.9 | 0.36 | 11.8 | 31.0 | 83.4 |
| 3    | 25   | 2     | 3     | 10   | 2    | 10   | 1    |

| STAY | DOC  | CW   | YG   | MARB | BF    | REA  | API   | TI    |
|------|------|------|------|------|-------|------|-------|-------|
| 11.6 | 13.8 | 77.8 | 0.27 | 1.04 | 0.048 | 0.44 | 170.9 | 106.2 |
|      |      | 35   | 1    | 2    |       |      | 10    | 2     |

SIMMENTAL EPD'S

We begin the trio of Stellpflug Hoffman Riseabove sons from the B A R Jilt 1744-9246 matron with the highest weaning and yearling performer, KLER KCC All Rise N1500. His impressive stature goes well beyond the paper predictions, as he is a standout among his contemporaries in the pen as well. He has been a feature of the offering all the way through maturity, and only continues to impress with maturity. This multipurpose sire offers top end calving ease and performance in one incredible package, science and real-world data collide here to create a very impressive Angus stud.



STELLPFLUG HOFFMAN RISEABOVE  
SIRE OF LOT 50-52

| CE | BW  | WW | YW  | DMI  | HP   | CEM | Milk | MW |
|----|-----|----|-----|------|------|-----|------|----|
| 6  | 1.7 | 92 | 162 | 1.91 | 16.6 | 12  | 27   | 85 |
|    | 43  | 10 | 19  |      | 1    | 11  | 44   |    |

| CW | MARB | RE   | FAT   | \$M | \$W | \$F | \$G | \$B | \$C |
|----|------|------|-------|-----|-----|-----|-----|-----|-----|
| 73 | 0.99 | 0.39 | 0.042 | 97  | 94  | 114 | 64  | 178 | 328 |
| 25 | 24   |      |       | 4   | 4   | 20  | 35  | 25  | 15  |

ANGUS EPD'S

|          |    |          |     |          |      |
|----------|----|----------|-----|----------|------|
| ADJ BW   | 82 | ADJ WW   | 896 | ADJ YW   | 1437 |
| BW RATIO | ET | WW RATIO | ET  | YW RATIO | ET   |





**KLER JILT M151**  
DAUGHTER OF THE B A R JILT 9691-5209 LINAGE



**KLER DOUBLE STACK 3901L**  
MATERNAL BROTHER TO LOT 46-52

## 51 KLER KCC STAND UP N1600

TATTOO: N1600 | DOB: 1/31/25 | ASA: 4536719 | BREED: PB AN

HOFFMAN STAGECOACH 1908  
STELLPFLUG HOFFMAN RISEABOVE  
HOFFMAN 3210 RITA LADY 0256  
DEER VALLEY OPTIMUM 9246  
**B A R JILT 1744-9246**  
B A R JILT 9691-5209

|          |    |          |     |          |      |
|----------|----|----------|-----|----------|------|
| ADJ BW   | 80 | ADJ WW   | 790 | ADJ YW   | 1348 |
| BW RATIO | ET | WW RATIO | ET  | YW RATIO | ET   |

| HOMOZYGOUS POLLED > HOMOZYGOUS BLACK |      |       |       |      |      |      |      |
|--------------------------------------|------|-------|-------|------|------|------|------|
| CE                                   | BW   | WW    | YW    | ADG  | MCE  | MILK | MWW  |
| 20.3                                 | -1.9 | 104.8 | 162.9 | 0.36 | 11.8 | 31.0 | 83.4 |
| 3                                    | 25   | 2     | 3     | 10   | 2    | 10   | 1    |

| STAY | DOC  | CW   | YG   | MARB | BF    | REA  | API   | TI    |
|------|------|------|------|------|-------|------|-------|-------|
| 11.6 | 13.8 | 77.8 | 0.27 | 1.04 | 0.048 | 0.44 | 170.9 | 106.2 |
|      | 35   | 1    |      | 2    |       |      | 10    | 2     |

SIMMENTAL EPD'S

| CE | BW  | WW | YW  | DMI  | HP   | CEM | Milk | MW |
|----|-----|----|-----|------|------|-----|------|----|
| 13 | 1.0 | 71 | 127 | 1.56 | 16.0 | 9   | 33   | 59 |
| 12 |     | 31 | 29  |      | 3    |     | 19   | 48 |

| CW | MARB | RE   | FAT   | \$M | \$W | \$F | \$G | \$B | \$C |
|----|------|------|-------|-----|-----|-----|-----|-----|-----|
| 69 | 0.69 | 0.72 | 0.039 | 95  | 79  | 115 | 54  | 169 | 314 |
| 14 | 30   |      |       | 5   | 3   | 25  | 25  | 25  | 15  |

ANGUS EPD'S



The Stellpflug Hoffman Riseabove flush on the B A R Jilt 1744-9246 donor mated up incredibly, and aligned two rising sources of elite quality. What is most impressive is that these herd bulls are incredibly impressive on foot. We think visitors to the farm will be impressed with the burliness, and added power that these Stellpflug Hoffman Riseabove sons are built with, as they are very genuine in their muscle pattern, and prove value to the high end genomic productions with their recorded data. Calving ease, and high performance comes together here, and supplies the "have your cake and eat it too" kind of scenario.

## 52 KLER KCC TOP SHELF N1200

TATTOO: N1200 | DOB: 1/26/25 | ASA: 4536716 | BREED: PB AN

HOFFMAN STAGECOACH 1908  
STELLPFLUG HOFFMAN RISEABOVE  
HOFFMAN 3210 RITA LADY 0256  
DEER VALLEY OPTIMUM 9246  
**B A R JILT 1744-9246**  
B A R JILT 9691-5209

|          |    |          |     |          |      |
|----------|----|----------|-----|----------|------|
| ADJ BW   | 77 | ADJ WW   | 744 | ADJ YW   | 1304 |
| BW RATIO | ET | WW RATIO | ET  | YW RATIO | ET   |

| HOMOZYGOUS POLLED > HOMOZYGOUS BLACK |      |       |       |      |      |      |      |
|--------------------------------------|------|-------|-------|------|------|------|------|
| CE                                   | BW   | WW    | YW    | ADG  | MCE  | MILK | MWW  |
| 20.3                                 | -1.9 | 104.8 | 162.9 | 0.36 | 11.8 | 31.0 | 83.4 |
| 3                                    | 25   | 2     | 3     | 10   | 2    | 10   | 1    |

| STAY | DOC  | CW   | YG   | MARB | BF    | REA  | API   | TI    |
|------|------|------|------|------|-------|------|-------|-------|
| 11.6 | 13.8 | 77.8 | 0.27 | 1.04 | 0.048 | 0.44 | 170.9 | 106.2 |
|      | 35   | 1    |      | 2    |       |      | 10    | 2     |

SIMMENTAL EPD'S

| CE | BW   | WW | YW  | DMI  | HP   | CEM | Milk | MW |
|----|------|----|-----|------|------|-----|------|----|
| 13 | -2.8 | 64 | 122 | 0.61 | 15.4 | 16  | 40   | 23 |
| 11 | 2    |    |     | 4    | 3    | 6   | 4    |    |

| CW | MARB | RE   | FAT   | \$M | \$W | \$F | \$G | \$B | \$C |
|----|------|------|-------|-----|-----|-----|-----|-----|-----|
| 60 | 1.83 | 0.72 | 0.086 | 92  | 99  | 102 | 65  | 167 | 309 |
|    | 1    |      |       | 10  | 2   | 35  | 35  | 35  | 20  |

ANGUS EPD'S

The Riverbend Queenie C353 donor cornerstones the Angus program for the KLER prefix, she gained a \$46,000 valuation last year as half interest sold to Justin Lucero and she continues to prove her worth with an impressive trio of sons to sell in 2026. She is best known as the dam of the \$60,000 KLER Formula 1 AI sire that is owned by Genex and Express Ranches, and also generated two daughters by C353 by Baldrige War Cry K041 at \$49,500 and \$11,500. When gauged in the Simmental registry she ranks top 5% WW, top 2% YW, top 2% ADG, top 10% Milk, top 10% MWW, top 15% Marb, and top 1% CW. Her running average of progeny sales is \$23,464. This trio of sons look to only continue the trend of excellence, as they come with not just impressive EPD predictions, but are built with the kind of quality that is easy to tie into.



**RIVERBEND QUEENIE C353**  
DAM OF LOT 53-55



| CE | BW  | WW  | YW  | DMI  | HP  | CEM | Milk | MW  |
|----|-----|-----|-----|------|-----|-----|------|-----|
| 3  | 3.6 | 110 | 194 | 2.61 | 9.7 | 10  | 27   | 149 |
| 1  | 3   | 1   |     |      |     | 14  |      | 5   |

ANGUS EPD'S



| CE | BW  | WW | YW  | DMI  | HP   | CEM | Milk | MW |
|----|-----|----|-----|------|------|-----|------|----|
| 9  | 0.2 | 95 | 154 | 1.49 | 16.8 | 13  | 22   | 87 |
| 12 | 19  | 4  | 44  |      | 1    | 10  |      | 45 |

ANGUS EPD'S



**KLER MONTANA M25**  
\$10,000 MATERNAL BROTHER TO LOT 55

## 53 KLER NORTH BRANCH N600

TATTOO: N600 | DOB: 1/14/25 | ASA: 4536712 | BREED: PB AN

BEAL BREAKTHROUGH  
4 SONS CAPONE  
DEER VALLEY BLACKBIRD 8768  
SITZ TOP GAME 561X  
RIVERBEND QUEENIE C353  
RIVERBEND QUEENIE X710

|          |    |          |     |          |      |
|----------|----|----------|-----|----------|------|
| ADJ BW   | 78 | ADJ WW   | 786 | ADJ YW   | 1252 |
| BW RATIO | ET | WW RATIO | ET  | YW RATIO | ET   |

| CE   | BW  | WW    | YW    | ADG  | MCE | MILK | MWW  |
|------|-----|-------|-------|------|-----|------|------|
| 16.7 | 1.0 | 103.2 | 170.1 | 0.42 | 8.4 | 37.6 | 87.1 |
| 15   |     | 2     | 1     | 2    | 30  | 1    | 1    |

SIMMENTAL EPD'S

**BALDRIDGE WAR CRY K041**  
SIRE OF LOT 54



## 54 KLER WARRIOR N151

TATTOO: N151 | DOB: 3/19/25 | ASA: 4620454 | BREED: PB AN

MILL BRAE IDENTIFIED 4031  
BALDRIDGE WAR CRY K041  
ERICA OF ELLSTON T220  
SITZ TOP GAME 561X  
RIVERBEND QUEENIE C353  
RIVERBEND QUEENIE X710

|          |    |          |     |          |      |
|----------|----|----------|-----|----------|------|
| ADJ BW   | 78 | ADJ WW   | 560 | ADJ YW   | 1414 |
| BW RATIO | ET | WW RATIO | ET  | YW RATIO | ET   |

| CE   | BW  | WW   | YW    | ADG  | MCE | MILK | MWW  |
|------|-----|------|-------|------|-----|------|------|
| 14.2 | 2.2 | 95.2 | 157.0 | 0.39 | 3.9 | 30.0 | 75.6 |
| 30   |     | 10   | 5     | 4    |     | 10   | 10   |

SIMMENTAL EPD'S

## 55 KLER SV PRIME POINT N5009

TATTOO: N5009 | DOB: 1/31/25 | AAA: 21407003 | BREED: PB AN

PLATTEMERE WEIGH UP K360  
STEVENSON TURNING POINT  
STEVENSON PRIDE I167X  
SITZ TOP GAME 561X  
RIVERBEND QUEENIE C353  
RIVERBEND QUEENIE X710

|          |    |          |     |          |      |
|----------|----|----------|-----|----------|------|
| ADJ BW   | 66 | ADJ WW   | 782 | ADJ YW   | 1295 |
| BW RATIO | ET | WW RATIO | ET  | YW RATIO | ET   |

| CE | BW  | WW | YW  | DMI  | HP   | CEM | Milk | MW |
|----|-----|----|-----|------|------|-----|------|----|
| 13 | 0.2 | 71 | 122 | 1.26 | 12.5 | 11  | 27   | 84 |
|    |     |    |     |      |      |     |      |    |

SIMMENTAL EPD'S



# Bred Females & Pairs





# 101 B A R JILT 1744-9246

TATTOO: 1744 | DOB: 8/30/21 | ASA: 4411612 | BREED: PB AN

DEER VALLEY GROWTH FUND  
**DEER VALLEY OPTIMUM 9246**  
 G A R PROGRESS 830  
 SYDGEN ENHANCE  
**B A R JILT 9691-5209**  
 B A R JILT 7620-3222

ADJ BW 62 | ADJ WW 756  
 BW RATIO ET | WW RATIO 118

HOMOZYGOUS POLLED / HOMOZYGOUS BLACK

| CE   | BW   | WW   | YW    | ADG  | MCE  | MILK | MWW  |
|------|------|------|-------|------|------|------|------|
| 22.3 | -3.4 | 96.3 | 169.0 | 0.45 | 15.0 | 35.0 | 83.1 |
| 1    | 10   | 10   | 2     | 1    | 1    | 1    | 1    |

| STAY | DOC  | CW   | YG   | MARB | BF    | REA  | API   | TI    |
|------|------|------|------|------|-------|------|-------|-------|
| 12.7 | 13.0 | 74.5 | 0.33 | 1.44 | 0.070 | 0.37 | 192.5 | 111.7 |
|      | 45   | 1    |      | 1    |       |      | 1     | 1     |

SIMMENTAL EPD'S

| CE | BW   | WW | YW  | DMI  | HP   | CEM | Milk | MW |
|----|------|----|-----|------|------|-----|------|----|
| 14 | -1.3 | 77 | 143 | 1.58 | 15.0 | 16  | 34   | 85 |
| 8  | 9    |    | 31  | 44   | 7    | 7   | 9    |    |

| CW | MARB | RE   | FAT   | \$M | \$W | \$F | \$G | \$B | \$C |
|----|------|------|-------|-----|-----|-----|-----|-----|-----|
| 61 | 1.48 | 0.55 | 0.046 | 82  | 87  | 108 | 90  | 198 | 339 |
|    | 3    |      |       | 15  | 5   | 20  | 4   | 5   | 3   |

ANGUS EPD'S

**Bred AI on 4/13/25 to BALDRIDGE GRINDSTONE (AAA: 20426654). Due 1/22/26. SAFE TO AI.**

The Angus program has been a small sector of the KLER cowherd, but over the last couple of years, through precise selection, and patience for finding females that combine numeric and phenotypic excellence, we have been able to build a small donor battery of females that we think complement the Simmental program and offer up a perfect option to our customers to tap into powerful Angus genetics. The B A R Jilt 1744-9246 donor has quickly arisen to the top of the totem pole, and we think her 2026 bull calf crop proves that her genetic value for generating both Simmental and Angus seedstock is unlimited. Her representation in the bull offering can be found through Lots 46-52, by various sires, and breed makeups, yet there is a constant stance of quality across the board, she is proving to be the source of legitimate beef quality regardless of the mating thrown her direction. This multipurpose, versatile donor cow comes with benefits all the way across her genomic database, offering a strong balance of calving ease and growth potential, and a very impressive roster of profitability driven indexes. She offers herself up as a female that can deliver upon the dreams of generating the high genomic evaluation cattle that are still built for the cattleman in the real world, a quest that so many seem to be on but is not proving to be easy. A purebred Angus female that is destined for big things from both a herd bull, and breed influencing female generator standpoint, there is truly no financial limit to the value of what these high end, genomically geared Angus cattle are worth and we think the opportunities for ROI here are endless! 15 sons for Jim Brinkley averaged \$11,366 with a top of \$17,500 in his November bull sale.



**KLER KCC SURE THING N18**  
 SON OF LOT 101, SELLS AS LOT 48



**KLER KCC ALL RISE N1500**  
 SON OF LOT 101, SELLS AS LOT 50



**KLER KCC STAND UP N1600**  
 SON OF LOT 101, SELLS AS LOT 51





# 102 KLER JANAES JEWEL M136

TATTOO: M136 | DOB: 3/5/24 | ASA: 4381488 | BREED: PB SM

KBHR REVOLUTION H071  
**KLER ELUSIVE 2117K**  
 K-LER RAIN MARIE  
 HOOK'S FULL FIGURES 11F  
**FIVE STAR JANAEE J9**  
 KBHR F316

ADJ BW 70 | ADJ WW 619  
 BW RATIO ET | WW RATIO ET

HOMOZYGOUS POLLED / HOMOZYGOUS BLACK

| CE  | BW  | WW   | YW    | ADG  | MCE | MILK | MWW  |
|-----|-----|------|-------|------|-----|------|------|
| 8.4 | 1.4 | 90.0 | 137.7 | 0.30 | 5.1 | 32.2 | 77.1 |
|     |     | 20   | 20    | 25   |     | 10   | 5    |

| STAY | DOC  | CW   | YG    | MARB | BF     | REA  | API   | TI   |
|------|------|------|-------|------|--------|------|-------|------|
| 13.4 | 13.9 | 40.2 | -0.29 | 0.43 | -0.035 | 1.02 | 145.0 | 94.5 |
|      | 25   | 30   |       | 20   |        | 25   | 30    | 15   |



**FIVE STAR JANAEE J9**  
 DAM OF LOT 102-106

## 102 PLANNED MATING

PB SM

**KLER JANAES JEWEL M136**  
 X RFS CREDENTIALS L49

| CE   | BW   | WW   | YW    | ADG  | MCE | MILK | MWW  |
|------|------|------|-------|------|-----|------|------|
| 13.4 | -1.2 | 82.1 | 131.0 | 0.31 | 8.2 | 30.1 | 71.0 |

| STAY | DOC  | CW   | YG    | MARB | BF    | REA  | API   | TI   |
|------|------|------|-------|------|-------|------|-------|------|
| 16.4 | 14.6 | 37.9 | -0.26 | 0.56 | -0.03 | 0.97 | 165.1 | 95.4 |



**KLER R/S POWER GLIDE M139**  
 FULL BROTHER TO LOT 102



**KLER R/S LEGEND M137**  
 FULL BROTHER TO LOT 102

Bred AI on 5/9/25 to RFS CREDENTIALS L49 (ASA: 4220296), PE from 6/6/25-10/1/25 to KLER CAPTAIN M112 (4411616).  
 Due 2/18/26. SAFE TO AI.

We begin the collection of Five Star Janae J9 daughters with the impressive KLER Janaes Jewel M136 female that has always been a standout of this bred heifer class because of her added eye appeal, incredible structural design, and the genomic package she is able to bring to the table. This stunning homozygous black and homozygous polled, baldy female is one that makes you stop and stare! Her ultra-feminine look, length of front end and smoothly laid should, transition back into a massive body cavity that is round and deep, and built with extra power and curvature. She remains wide and burly all the way through to her pin set, and is built upon a good shaped, square toed foot. Genomically she is geared for profitability through an EPD roster that is geared for growth and carcass quality. She is the kind that offers up an impressive base to breed from, and the consistency that this cow family is proving to breed with adds a lot of faith to what we think she is capable of doing for a program. A pair of full brothers sold last year for \$15,500 and \$7,500 and are working for Lucas Laufenberg and Greg Heine. **KLER Cattle reserve the right to one successful flush of 6 or more embryos on this female at the buyer's convenience and seller's expense.**



## 103 KLER JANAES PROMISE M152

TATTOO: M152 | DOB: 1/21/24 | ASA: 4385452 | BREED: PB SM

RUBYS TURNPIKE 771E  
**KLER PROMOTER G15**  
 GW MISS GPRD 028X  
 HOOK'S FULL FIGURES 11F  
**FIVE STAR JANA J9**  
 KBHR F316

ADJ BW 80 | ADJ WW 746  
 BW RATIO ET | WW RATIO ET

HOMOZYGOUS POLLED / HETEROZYGOUS BLACK

| CE   | BW   | WW   | YW    | ADG  | MCE | MILK | MWW  |
|------|------|------|-------|------|-----|------|------|
| 10.8 | -0.7 | 90.5 | 146.0 | 0.35 | 6.9 | 29.2 | 74.3 |
| 40   | 20   | 20   | 10    | 10   | 30  | 15   | 10   |

| STAY | DOC  | CW   | YG    | MARB | BF     | REA  | API   | TI   |
|------|------|------|-------|------|--------|------|-------|------|
| 13.0 | 14.0 | 44.3 | -0.34 | 0.25 | -0.048 | 1.15 | 143.0 | 93.7 |
|      | 25   | 20   |       | 40   |        | 10   | 35    | 15   |



## 104 KLER JANAES PRODIGY M153

TATTOO: M153 | DOB: 1/25/24 | ASA: 4385453 | BREED: PB SM

RUBYS TURNPIKE 771E  
**KLER PROMOTER G15**  
 GW MISS GPRD 028X  
 HOOK'S FULL FIGURES 11F  
**FIVE STAR JANA J9**  
 KBHR F316

ADJ BW 77 | ADJ WW 761  
 BW RATIO ET | WW RATIO ET

HOMOZYGOUS POLLED / HETEROZYGOUS BLACK

| CE   | BW  | WW   | YW    | ADG  | MCE | MILK | MWW  |
|------|-----|------|-------|------|-----|------|------|
| 11.0 | 1.3 | 93.6 | 152.3 | 0.37 | 6.1 | 29.2 | 75.9 |
| 40   |     | 15   | 5     | 3    | 45  | 15   | 10   |

| STAY | DOC  | CW   | YG    | MARB | BF     | REA  | API   | TI   |
|------|------|------|-------|------|--------|------|-------|------|
| 14.2 | 17.4 | 39.3 | -0.36 | 0.38 | -0.055 | 1.09 | 150.8 | 96.6 |
|      | 3    | 30   |       | 20   |        | 15   | 25    | 10   |

### 103 PLANNED MATING

PB SM

**KLER JANAES PROMISE M152**  
**X FIVE STAR ACE M46**

| CE   | BW   | WW   | YW    | ADG  | MCE   | MILK | MWW   |      |
|------|------|------|-------|------|-------|------|-------|------|
| 12.7 | -0.7 | 92.9 | 145.0 | 0.33 | 7.7   | 28.1 | 74.4  |      |
| STAY | DOC  | CW   | YG    | MARB | BF    | REA  | API   | TI   |
| 15.6 | 13.1 | 48.3 | -0.26 | 0.27 | -0.04 | 0.97 | 149.1 | 93.4 |

Lot 103:

Bred AI on 4/2/25 to RFS CREDENTIALS L49 (ASA: 4220296). PE from 4/23/25-6/6/25 to FIVE STAR ACE M46 (4406800). Due 2/2/26. **LIKELY DUE TO FIVE STAR ACE M46.**

Two full sisters from the KLER Promoter G15 synergy with Five Star Janae J9 that are homozygous polled and built with profit and longevity in mind. This duo are the highest powered, heaviest structured daughters of the J9 daughters to sell this year, and prove validity to their impressive EPD slate with weaning weight recordings that put them at the top of the crop this past fall. It is hard to fault the genomic package that comes all-inclusive with these females, as they should satisfy just about any breeder's checklist. Their dam is becoming the leading lady for the KLER brand, as both sons and daughters have been sale highlights, in particular the \$40,000 half interest high selling female last year to DR King. Note that the dam of this pair is a full sister to the trending Five Star Jackson J10 stud that has become a go to sire of EPD and phenotype excellence across the business. Power in the blood! **KLER Cattle reserve the right to one successful flush of 6 or more embryos on this female at the buyer's convenience and seller's expense.**

Lot 104:

Bred AI on 4/2/25 to RFS CREDENTIALS L49 (ASA: 4220296). PE from 4/23/25-6/6/25 to FIVE STAR ACE M46 (4406800). Due 2/2/26. **LIKELY DUE TO FIVE STAR ACE M46.**

### 104 PLANNED MATING

PB SM

**KLER JANAES PRODIGY M153**  
**X FIVE STAR ACE M46**

| CE   | BW   | WW   | YW    | ADG  | MCE   | MILK | MWW   |      |
|------|------|------|-------|------|-------|------|-------|------|
| 12.8 | 0.4  | 94.5 | 148.2 | 0.34 | 7.3   | 28.1 | 75.2  |      |
| STAY | DOC  | CW   | YG    | MARB | BF    | REA  | API   | TI   |
| 16.2 | 14.8 | 45.8 | -0.27 | 0.34 | -0.05 | 0.94 | 153.2 | 94.9 |

**KLER PROMOTER G15**  
 SIRE OF LOT 103 & 104



**KLER R/S DYNAMITE M80**  
 MATERNAL BROTHER TO LOT 102-106





**105 PLANNED MATING**  
 1/2 AN 1/2 SM  
**KLER JANAE'S BEAUTY M181**  
**X KLER CAPTAIN M112**

| CE   | BW  | WW   | YW    | ADG  | MCE | MILK | MWW  |
|------|-----|------|-------|------|-----|------|------|
| 13.3 | 0.4 | 97.3 | 154.1 | 0.36 | 7.6 | 33.5 | 82.0 |

| STAY | DOC  | CW   | YG    | MARB | BF   | REA  | API   | TI    |
|------|------|------|-------|------|------|------|-------|-------|
| 12.6 | 14.6 | 87.0 | -0.02 | 1.29 | 0.02 | 1.22 | 187.1 | 115.1 |

**Lot 105:**  
 Bred AI on 6/5/25 to RFS CREDENTIALS L49 (ASA: 4220296). PE from 6/6/25-10/1/25 to KLER CAPTAIN M112 (4411616). Due 5/5/26. SAFE TO KLER CAPTAIN M112. *KLER Cattle reserve the right to one successful flush of 6 or more embryos on this female at the buyer's convenience and seller's expense.*

We are excited to introduce a pair of elite EPD phenoms from the combination of LBRS Genesis G69 with our Five Star Janae J9 donor cow that is blazing a path towards the front of the business with her incredible ability to generate stock that appeal to stockmen regardless of their selection pressures. We think there is immense potential for this duo to follow in the footsteps of their high caliber cow family when it comes to generating high value, high utility stock, both male and female. These LBRS Genesis G69 daughters stand out above the crowd when it comes to EPD excellence, sporting growth, carcass and profitability numbers among the most elite in the registry. From a TI standpoint they are next level! Dive into the best we have to offer from a cow family standpoint, this is the kind it takes to raise the AI quality herd bull prospects!

**Lot 106:**  
 Bred AI on 6/5/25 to RFS CREDENTIALS L49 (ASA: 4220296). PE from 6/6/25-10/1/25 to KLER CAPTAIN M112 (4411616). Due 3/17/26. LIKELY SAFE TO AI.

**106 PLANNED MATING**  
 PB SM  
**KLER JANAE'S QUEEN M184**  
**X RFS CREDENTIALS L49**

| CE   | BW   | WW   | YW    | ADG  | MCE | MILK | MWW  |
|------|------|------|-------|------|-----|------|------|
| 12.5 | -1.3 | 89.9 | 142.5 | 0.33 | 8.7 | 30.6 | 75.5 |

| STAY | DOC  | CW   | YG    | MARB | BF    | REA  | API   | TI    |
|------|------|------|-------|------|-------|------|-------|-------|
| 17.0 | 15.5 | 47.9 | -0.21 | 0.66 | -0.02 | 0.97 | 173.6 | 102.4 |

**LBRS GENESIS G69**  
 SIRE OF LOT 105 & 106



**KLER R/S SHOCK WAVE M17**  
 MATERNAL BROTHER TO LOT 102-106

**105 KLER JANAE'S BEAUTY M181**  
 TATTOO: M181 | DOB: 4/2/24 | ASA: 4498092 | BREED: PB SM

WS PROCLAMATION E202  
 LBRS GENESIS G69  
 LBR DIANA D69  
 HOOK'S FULL FIGURES 11F  
 FIVE STAR JANAE J9  
 KBHR F316

| CE   | BW   | WW   | YW    | ADG  | MCE | MILK | MWW  |
|------|------|------|-------|------|-----|------|------|
| 11.7 | -0.9 | 92.1 | 136.6 | 0.28 | 7.3 | 33.3 | 79.3 |
| 30   | 20   | 15   | 20    | 35   | 25  | 5    | 3    |

| STAY | DOC  | CW   | YG    | MARB | BF     | REA  | API   | TI    |
|------|------|------|-------|------|--------|------|-------|-------|
| 14.2 | 17.5 | 57.8 | -0.19 | 0.77 | -0.028 | 1.00 | 172.7 | 106.8 |
| 3    | 3    |      | 2     |      | 25     | 10   | 2     |       |

| ADJ BW   | 80 | ADJ WW   | 648 |
|----------|----|----------|-----|
| BW RATIO | ET | WW RATIO | ET  |



**106 KLER JANAE'S QUEEN M184**  
 TATTOO: M184 | DOB: 4/1/24 | ASA: 4498093 | BREED: PB SM

WS PROCLAMATION E202  
 LBRS GENESIS G69  
 LBR DIANA D69  
 HOOK'S FULL FIGURES 11F  
 FIVE STAR JANAE J9  
 KBHR F316

| CE  | BW  | WW    | YW    | ADG  | MCE | MILK | MWW  |
|-----|-----|-------|-------|------|-----|------|------|
| 6.6 | 1.3 | 105.6 | 160.6 | 0.34 | 6.1 | 33.3 | 86.1 |
|     |     | 2     | 3     | 10   | 45  | 5    | 1    |

| STAY | DOC  | CW   | YG    | MARB | BF     | REA  | API   | TI    |
|------|------|------|-------|------|--------|------|-------|-------|
| 14.6 | 15.8 | 60.1 | -0.19 | 0.62 | -0.030 | 1.02 | 160.6 | 107.9 |
| 10   | 3    |      | 5     |      | 25     | 15   | 1     |       |

| ADJ BW   | 79 | ADJ WW   | 637 |
|----------|----|----------|-----|
| BW RATIO | ET | WW RATIO | ET  |



## 107 KLER QUEEN DREAM M148

TATTOO: M148

DOB: 2/15/24

ASA: 4381501

BREED: PB SM

HHS MR 847D  
KBHR REVOLUTION H071  
WS MISS SUGAR C4  
RUBYS TURNPIKE 771E  
KLER DOLLYS QUEEN H1  
K-LER DOLLY'S QUEEN 609D

ADJ BW 75 ADJ WW 596  
BW RATIO ET WW RATIO ET

| HOMOZYGOUS POLLED / HOMOZYGOUS BLACK |     |      |       |      |     |      |      |
|--------------------------------------|-----|------|-------|------|-----|------|------|
| CE                                   | BW  | WW   | YW    | ADG  | MCE | MILK | MWW  |
| 7.6                                  | 2.5 | 97.3 | 155.1 | 0.36 | 3.1 | 23.7 | 72.2 |
|                                      |     | 10   | 4     | 4    |     | 45   | 15   |

| STAY | DOC  | CW   | YG    | MARB | BF     | REA  | API   | TI   |
|------|------|------|-------|------|--------|------|-------|------|
| 15.2 | 12.7 | 60.8 | -0.35 | 0.27 | -0.067 | 1.26 | 139.1 | 91.8 |
|      | 40   | 2    |       | 35   |        | 3    | 40    | 20   |



## 108 KLER QUEEN OF HEARTS M145

TATTOO: M145

DOB: 2/21/24

ASA: 4381498

BREED: PB SM

HHS MR 847D  
KBHR REVOLUTION H071  
WS MISS SUGAR C4  
RUBYS TURNPIKE 771E  
KLER DOLLYS QUEEN H1  
K-LER DOLLY'S QUEEN 609D

ADJ BW 72 ADJ WW 734  
BW RATIO ET WW RATIO ET

| HOMOZYGOUS POLLED / HOMOZYGOUS BLACK |     |      |       |      |     |      |      |
|--------------------------------------|-----|------|-------|------|-----|------|------|
| CE                                   | BW  | WW   | YW    | ADG  | MCE | MILK | MWW  |
| 7.6                                  | 2.5 | 97.3 | 155.1 | 0.36 | 3.1 | 23.7 | 72.2 |
|                                      |     | 10   | 4     | 4    |     | 45   | 15   |

| STAY | DOC  | CW   | YG    | MARB | BF     | REA  | API   | TI   |
|------|------|------|-------|------|--------|------|-------|------|
| 15.2 | 12.7 | 60.8 | -0.35 | 0.27 | -0.067 | 1.26 | 139.1 | 91.8 |
|      | 40   | 2    |       | 35   |        | 3    | 40    | 20   |

## 107 PLANNED MATING

PB SM

KLER QUEEN DREAM M148  
X FIVE STAR ACE M46

| CE   | BW  | WW   | YW    | ADG  | MCE | MILK | MWW  |
|------|-----|------|-------|------|-----|------|------|
| 11.1 | 1.0 | 96.3 | 149.6 | 0.33 | 5.8 | 25.4 | 73.4 |

| STAY | DOC  | CW   | YG    | MARB | BF    | REA  | API   | TI   |
|------|------|------|-------|------|-------|------|-------|------|
| 16.7 | 12.5 | 56.6 | -0.26 | 0.28 | -0.05 | 1.02 | 148.5 | 93.3 |

### Lot 107:

Bred AI on 4/2/25 to KLER FORMULA 1 (ASA: 4178221). PE from 4/23/25-6/6/25 to FIVE STAR ACE M46 (4406800). Due 2/1/26. LIKELY DUE TO FIVE STAR ACE M46.

The daughters of KLER Dollys Queen H1 are going to be favorites of those who like them built with a futuristic look. Their dam is a new donor in the roster and is a full sister to the \$60,000 W/C Need4Speed 1016H sire of attraction, and stems from the legendary K-LER Dolly's Queen 609D lineage that is best known for producing the \$180,000 W/C Fort Knox 609F who has been a breed influencer for some time now! There are generations of maternal power in the pedigree here, stemming back to the iconic GW Miss GPRD 028X female that has been a long standing source of the most elite quality here in St. Charles. On the quest to build cattle that both stand and read with excellence is how we have arrived here and the trio of KBHR Revolution H071 daughters from H1 are the kind that make this coalition of quality so easy.

### Lot 108:

Bred AI on 4/22/25 to TJ TAKE THAT 614M (ASA: 4366420). PE from to FIVE STAR ACE M46 (4/23-6/6) & KLER CAPTAIN M112 (6/6-10/1). Due 4/16/26. LIKELY DUE TO KLER CAPTAIN M112.

## 108 PLANNED MATING

1/2 AN 1/2 SM

KLER QUEEN OF HEARTS M145  
X KLER CAPTAIN M112

| CE   | BW  | WW   | YW    | ADG  | MCE | MILK | MWW  |
|------|-----|------|-------|------|-----|------|------|
| 11.3 | 2.1 | 99.9 | 163.3 | 0.40 | 5.5 | 28.7 | 78.5 |

| STAY | DOC  | CW   | YG    | MARB | BF   | REA  | API   | TI    |
|------|------|------|-------|------|------|------|-------|-------|
| 13.1 | 12.2 | 88.5 | -0.10 | 1.04 | 0.00 | 1.35 | 171.3 | 108.3 |

### K-LER DOLLY'S QUEEN 609D

LEGENDARY MATERNAL GRANDDAM OF LOT 107-110



### W/C FORT KNOX 609F

\$180,000 MATERNAL BROTHER TO DAM OF LOT 107-110





109

## KLER DFS1 QUEEN M201

TATTOO: M201

DOB: 2/20/24

ASA: 4626738

BREED: PB SM

HHS MR 847D  
KBHR REVOLUTION H071  
WS MISS SUGAR C4  
RUBYS TURNPIKE 771E  
KLER DOLLYS QUEEN H1  
K-LER DOLLY'S QUEEN 609D

ADJ BW 73 ADJ WW 608  
BW RATIO ET WW RATIO ET

| HOMOZYGOUS POLLED / HOMOZYGOUS BLACK |     |      |       |      |     |      |      |
|--------------------------------------|-----|------|-------|------|-----|------|------|
| CE                                   | BW  | WW   | YW    | ADG  | MCE | MILK | MWW  |
| 7.6                                  | 2.5 | 97.3 | 155.1 | 0.36 | 3.1 | 23.7 | 72.2 |
|                                      |     | 10   | 4     | 4    |     | 45   | 15   |

| STAY | DOC  | CW   | YG    | MARB | BF     | REA  | API   | TI   |
|------|------|------|-------|------|--------|------|-------|------|
| 15.2 | 12.6 | 60.8 | -0.35 | 0.27 | -0.067 | 1.26 | 139.1 | 91.8 |
|      | 40   | 2    |       | 35   |        | 3    | 40    | 20   |



110

## KLER DFS1 QUEEN M200

TATTOO: M200

DOB: 2/25/24

ASA: 4626737

BREED: PB SM

KLER PROMOTER G15  
KLER GREATER GOOD 2064K  
HS/HLF4 GINGERSNAP  
RUBYS TURNPIKE 771E  
KLER DOLLYS QUEEN H1  
K-LER DOLLY'S QUEEN 609D

ADJ BW 71 ADJ WW 606  
BW RATIO ET WW RATIO ET

| HOMOZYGOUS POLLED |     |      |       |      |     |      |      |
|-------------------|-----|------|-------|------|-----|------|------|
| CE                | BW  | WW   | YW    | ADG  | MCE | MILK | MWW  |
| 5.8               | 2.6 | 92.1 | 150.8 | 0.37 | 3.5 | 22.1 | 68.0 |
|                   |     | 15   | 10    | 3    |     |      | 30   |

| STAY | DOC | CW   | YG    | MARB | BF     | REA  | API   | TI   |
|------|-----|------|-------|------|--------|------|-------|------|
| 11.9 | 8.6 | 51.5 | -0.48 | 0.15 | -0.099 | 1.29 | 122.3 | 85.6 |
|      |     | 10   | 10    |      | 15     | 2    |       | 35   |

## 109 PLANNED MATING

1/2 AN 1/2 SM

KLER DFS1 QUEEN M201  
X JOHNSON KLER LANDMAN 4306

| CE  | BW  | WW    | YW    | ADG  | MCE | MILK | MWW  |
|-----|-----|-------|-------|------|-----|------|------|
| 9.5 | 1.4 | 104.3 | 170.6 | 0.42 | 5.1 | 25.4 | 77.4 |

| STAY | DOC  | CW   | YG    | MARB | BF   | REA  | API   | TI    |
|------|------|------|-------|------|------|------|-------|-------|
| 15.1 | 24.7 | 81.6 | -0.04 | 0.85 | 0.01 | 1.13 | 165.3 | 106.2 |

Lot 109:

Bred AI on 5/1/25 to FIVE STAR ACE M46 (ASA: 4406800). PE from 6/6/25-10/1/25 to JOHNSON KLER LANDMAN 4306 (4431991). Due 5/26/26. SAFE TO JOHNSON KLER LANDMAN 4306.

The KLER Dollys Queen H1 donor is one that will become a feature of this offering going forward as she is proving to generate the best of both worlds, as her daughters have the unordinary ability to deliver a powerful genomic base in a super stylish, and impressive phenotype. We think that building better beef becomes easier when you are able to start with a base like these two will provide, and in turn the opportunity to generate impressive ROI follows suit. There are generations of cow power built into the maternal lineage of this cow family, and there is only more to come as they are the right kind to make cattle that appease real world stockmen both on foot and on the paper.

Lot 110:

Bred AI on 4/21/25 to KLER FORMULA 1 (ASA: 4178221). PE from to FIVE STAR ACE M46 (4/23-6/6) & KLER CAPTAIN M112 (6/6-10/1). Due 2/25/26. TOO CLOSE TO CALL.

## 110 PLANNED MATING

1/2 AN 1/2 SM

KLER DFS1 QUEEN M200  
X KLER FORMULA 1

| CE   | BW  | WW   | YW    | ADG  | MCE | MILK | MWW  |
|------|-----|------|-------|------|-----|------|------|
| 11.1 | 1.2 | 94.2 | 158.4 | 0.41 | 8.3 | 28.6 | 75.6 |

| STAY | DOC  | CW   | YG    | MARB | BF    | REA  | API   | TI   |
|------|------|------|-------|------|-------|------|-------|------|
| 12.6 | 11.6 | 69.2 | -0.14 | 0.77 | -0.02 | 1.05 | 154.9 | 99.4 |



W/C NEED4SPEED 1016H

\$60,000 FULL BROTHER TO DAM OF LOT 107-110



## 111 PLANNED MATING

5/8 AN 3/8 SM  
KLER DOLLY M177  
X KLER CAPTAIN M112

| CE   | BW  | WW   | YW    | ADG  | MCE | MILK | MWW  |
|------|-----|------|-------|------|-----|------|------|
| 11.3 | 2.0 | 94.4 | 150.2 | 0.35 | 6.0 | 27.9 | 75.0 |

| STAY | DOC  | CW   | YG    | MARB | BF   | REA  | API   | TI    |
|------|------|------|-------|------|------|------|-------|-------|
| 11.4 | 11.8 | 79.2 | -0.12 | 1.00 | 0.00 | 1.26 | 161.6 | 103.3 |

Bred AI on 6/5/25 to KLER R/S SHOCK WAVE M17 (ASA: 4381403). PE from 6/6/25-10/1/25 to KLER CAPTAIN M112 (4411616). Due 4/6/26. SAFE TO KLER CAPTAIN M112. KLER Dolly M177 comes at a little different speed, as the VCL Foresight daughter is one of the phenotype driven leaders from the iconic "Dolly" lineage through a full sister to K-LER Dolly's Queen 609D, the dam of the \$180,000 W/C Fort Knox 609D and several other high sellers and breed influencers. This female is super impressive in the flesh and is backed by a pedigree that makes her destined for stardom. The VCL Foresight daughters have become a trusted source of longevity and added maternal quality, and with the power cow family that KLER Dolly M177 stems from, there is no question that she has immense potential for generating stock of added value.



**K-LER DOLLY'S LADY 810F**  
DAM OF LOT 111

## 111 KLER DOLLY M177

TATTOO: M177 | DOB: 4/1/23 | ASA: 4628937 | BREED: 3/4 SM 1/4 AN

MR CCF 20-20  
VCL FORESIGHT  
HCCO COUNTESS 412D  
W/C EXECUTIVE ORDER 8543B  
K-LER DOLLY'S LADY 810F  
GW MISS GPRD 028X

|          |    |          |     |
|----------|----|----------|-----|
| ADJ BW   | 81 | ADJ WW   | 652 |
| BW RATIO | ET | WW RATIO | ET  |

| HOMOZYGOUS POLLED / HOMOZYGOUS BLACK |     |      |       |      |     |      |      |
|--------------------------------------|-----|------|-------|------|-----|------|------|
| CE                                   | BW  | WW   | YW    | ADG  | MCE | MILK | MWW  |
| 7.7                                  | 2.3 | 86.4 | 128.9 | 0.27 | 4.1 | 22.2 | 65.3 |
|                                      |     | 25   | 35    |      |     |      | 40   |

| STAY | DOC  | CW   | YG    | MARB | BF     | REA  | API   | TI   |
|------|------|------|-------|------|--------|------|-------|------|
| 11.7 | 11.9 | 42.2 | -0.38 | 0.19 | -0.071 | 1.07 | 120.2 | 82.0 |
|      |      | 40   | 5     |      | 10     | 5    |       |      |



## 112 PLANNED MATING

PB SM  
KLER DOLLYS MIRROR M37  
X TJ TAKE THAT 614M

| CE   | BW  | WW   | YW    | ADG  | MCE | MILK | MWW  |
|------|-----|------|-------|------|-----|------|------|
| 10.5 | 1.4 | 94.9 | 153.5 | 0.37 | 5.3 | 23.0 | 70.4 |

| STAY | DOC  | CW   | YG    | MARB | BF    | REA  | API   | TI   |
|------|------|------|-------|------|-------|------|-------|------|
| 17.7 | 17.2 | 49.7 | -0.27 | 0.49 | -0.06 | 0.89 | 160.7 | 97.2 |

Bred AI on 4/3/25 to TJ TAKE THAT 614M (ASA: 4366420). PE from 4/23/25-6/6/25 to FIVE STAR ACE M46 (4406800). Due 1/13/26. SAFE TO AI. KLER Dollys Mirror M37 stems from some of the most exciting and admirable pedigrees you will find within our program, the sons of K-LER Dolly's Star have been in high demand and this daughter continues the trend of excellence. This female comes with the trademarked power and extra cowy look that the Dolly cow family injects so consistently, and we think will possess the high caliber generating potential that they so often instill. She comes with a set of monster growth and performance predictions, and will be the source of legit power, plan on this female supplying a potent shot of growth!



**KLER/HLL DOLLYS PROFIT J32**  
MATERNAL SISTER TO LOT 112

## 112 KLER DOLLYS MIRROR M37

TATTOO: M37 | DOB: 1/9/24 | ASA: 4381418 | BREED: 3/4 SM 1/4 AN

HHS MR 847D  
KBHR REVOLUTION H071  
WS MISS SUGAR C4  
W/C EXECUTIVE ORDER 8543B  
K-LER DOLLY'S STAR  
GW MISS GPRD 028X

|          |     |          |     |
|----------|-----|----------|-----|
| ADJ BW   | 87  | ADJ WW   | 607 |
| BW RATIO | 113 | WW RATIO | 98  |

| HOMOZYGOUS POLLED / HOMOZYGOUS BLACK |     |      |       |      |     |      |      |
|--------------------------------------|-----|------|-------|------|-----|------|------|
| CE                                   | BW  | WW   | YW    | ADG  | MCE | MILK | MWW  |
| 4.9                                  | 3.5 | 99.2 | 150.8 | 0.32 | 1.2 | 20.6 | 70.1 |
|                                      |     | 4    | 10    | 25   |     |      | 20   |

| STAY | DOC  | CW   | YG    | MARB | BF     | REA  | API   | TI   |
|------|------|------|-------|------|--------|------|-------|------|
| 15.6 | 16.7 | 52.2 | -0.40 | 0.28 | -0.072 | 1.23 | 123.3 | 87.6 |
| 45   | 10   | 20   | 4     |      | 10     | 1    |       | 35   |





113

## KLER FAITHFUL BABE 1M6

TATTOO: 1M6

DOB: 1/16/24

ASA: 4381505

BREED: PB SM

RUBYS TURNPIKE 771E  
KLER PROMOTER G15  
GW MISS GPRD 028X  
W/C DOUBLE DOWN 5014E  
KLER/H20 MS FAITHFUL 2007K  
ELLINGSON/STR HOPE H026

ADJ BW 87 ADJ WW 603  
BW RATIO ET WW RATIO ET

| HOMOZYGOUS POLLED / HOMOZYGOUS BLACK |     |      |       |      |     |      |      |
|--------------------------------------|-----|------|-------|------|-----|------|------|
| CE                                   | BW  | WW   | YW    | ADG  | MCE | MILK | MWW  |
| 8.5                                  | 1.0 | 81.5 | 126.6 | 0.28 | 5.9 | 14.8 | 55.4 |
|                                      | 45  | 40   | 35    | 35   |     |      |      |

| STAY | DOC | CW   | YG    | MARB | BF     | REA  | API   | TI   |
|------|-----|------|-------|------|--------|------|-------|------|
| 12.1 | 6.2 | 33.4 | -0.62 | 0.20 | -0.117 | 1.32 | 129.4 | 84.1 |
|      |     |      | 1     | 45   | 5      | 2    |       | 40   |



114

## KLER FAITHFUL 1M7

TATTOO: 1M7

DOB: 1/20/24

ASA: 4381506

BREED: PB SM

RUBYS TURNPIKE 771E  
KLER PROMOTER G15  
GW MISS GPRD 028X  
W/C DOUBLE DOWN 5014E  
KLER/H20 MS FAITHFUL 2007K  
ELLINGSON/STR HOPE H026

ADJ BW 91 ADJ WW 731  
BW RATIO ET WW RATIO ET

| HOMOZYGOUS POLLED / HOMOZYGOUS BLACK |     |       |       |      |     |      |      |
|--------------------------------------|-----|-------|-------|------|-----|------|------|
| CE                                   | BW  | WW    | YW    | ADG  | MCE | MILK | MWW  |
| 3.7                                  | 4.1 | 100.2 | 154.0 | 0.34 | 2.5 | 14.8 | 64.8 |
|                                      |     | 4     | 5     | 10   |     |      | 45   |

| STAY | DOC | CW   | YG    | MARB | BF     | REA  | API   | TI   |
|------|-----|------|-------|------|--------|------|-------|------|
| 10.6 | 8.7 | 49.4 | -0.51 | 0.06 | -0.100 | 1.34 | 113.1 | 86.5 |
|      |     | 10   | 10    |      | 15     | 2    |       | 35   |

## PLANNED MATING

PB SM

KLER FAITHFUL BABE 1M6  
X TJ TAKE THAT 614M

| CE   | BW   | WW   | YW    | ADG  | MCE   | MILK | MWW   |      |
|------|------|------|-------|------|-------|------|-------|------|
| 12.3 | 0.2  | 86.0 | 141.4 | 0.35 | 7.7   | 20.1 | 63.0  |      |
| STAY | DOC  | CW   | YG    | MARB | BF    | REA  | API   | TI   |
| 15.9 | 11.9 | 40.3 | -0.38 | 0.45 | -0.08 | 0.94 | 157.2 | 93.1 |

### Lot 113:

Bred AI on 4/3/25 to TJ TAKE THAT 614M (ASA: 4366420). PE from 4/23/25-6/6/25 to FIVE STAR ACE M46 (4406800). Due 1/13/26. SAFE TO AI. KLER Cattle reserve the right to one successful flush of 6 or more embryos on this female at the buyer's convenience and seller's expense.

A very impressive set of full sisters that come from the mating of KLER Promoter G15 with the young and upcoming KLER/H20 Ms Faithful 2007K donor. These females come in a homozygous black and homozygous polled package, and deliver up a high-quality look of maternal power, with genomic predictions that suggest a massive influx of growth and performance will come with their progeny. By looking at them in person, and comparing to their contemporaries this becomes a completely legitimate hypothesis. The KLER Faithful 1M7 female has been at the front of the pack from day one, and has matured with incredible stoutness, and boldness, and her elite genomic package suggest that there will be high heritability of this trend. Both of these females fell pregnant to their AI service with TJ Take That 614M, an impressive purebred, calving ease stud that will get the ROI ledger headed in the right direction from the get go.

### Lot 114:

Bred AI on 4/4/25 to TJ TAKE THAT 614M (ASA: 4366420). PE from 4/23/25-6/6/25 to FIVE STAR ACE M46 (4406800). Due 1/14/26. SAFE TO AI.

## PLANNED MATING

PB SM

KLER FAITHFUL 1M7  
X TJ TAKE THAT 614M

| CE   | BW   | WW   | YW    | ADG  | MCE   | MILK | MWW   |      |
|------|------|------|-------|------|-------|------|-------|------|
| 9.9  | 1.7  | 95.4 | 155.1 | 0.38 | 6.0   | 20.1 | 67.7  |      |
| STAY | DOC  | CW   | YG    | MARB | BF    | REA  | API   | TI   |
| 15.2 | 13.2 | 48.3 | -0.32 | 0.38 | -0.07 | 0.95 | 149.5 | 94.5 |

### KLER STRONG BUILT M74

MATERNAL BROTHER TO LOT 113 & 114



### KLER NEXT THREAT N54

MATERNAL BROTHER TO LOT 113 & 114,  
SELLS AS LOT 40



## 115 BCII HSC MISS MARVEL 23L

TATTOO: 23L | DOB: 9/5/23 | ASA: 4343997 | BREED: 1/2 SM 1/2 AN

REMINGTON LOCK N LOAD 54U  
W/C LOADED UP 1119Y  
AUBREYS BLACK BLAZE III  
SILVEIRAS STYLE 9303  
BCII SANDY 0215  
KNC CABIN CREEK SANDY 905

ADJ BW 75 | ADJ WW 602  
BW RATIO ET | WW RATIO ET

HOMOZYGOUS POLLED

| CE   | BW  | WW   | YW    | ADG  | MCE | MILK | MWW  |
|------|-----|------|-------|------|-----|------|------|
| 10.3 | 1.3 | 68.0 | 108.1 | 0.25 | 5.2 | 17.3 | 51.1 |

| STAY | DOC  | CW   | YG    | MARB | BF     | REA  | API   | TI   |
|------|------|------|-------|------|--------|------|-------|------|
| 10.5 | 11.7 | 33.7 | -0.21 | 0.28 | -0.041 | 0.66 | 110.9 | 71.2 |
|      |      |      | 45    |      | 35     |      |       |      |



## 116 KLER/DFS1 STRAWBERRY WINE

TATTOO: L06 | DOB: 12/31/23 | ASA: 4620919 | BREED: PB SM

GWS EBONYS TRADEMARK 6N  
REMINGTON SECRET WEAPON 185  
AUBREYS BLACKBLAZE II 5T  
SVF STEEL FORCE S701  
BWL TINLEY 933D  
EKHCC RED JEWEL 760

ADJ BW 77 | ADJ WW 601  
BW RATIO ET | WW RATIO ET

HOMOZYGOUS POLLED

| CE  | BW  | WW   | YW    | ADG  | MCE | MILK | MWW  |
|-----|-----|------|-------|------|-----|------|------|
| 7.6 | 3.0 | 80.9 | 125.7 | 0.28 | 4.1 | 16.9 | 57.2 |
|     |     | 45   | 35    | 35   |     |      |      |

| STAY | DOC | CW   | YG    | MARB  | BF     | REA  | API   | TI   |
|------|-----|------|-------|-------|--------|------|-------|------|
| 10.8 | 5.8 | 33.8 | -0.48 | -0.05 | -0.098 | 1.03 | 107.1 | 74.4 |
|      |     |      | 10    |       | 15     | 20   |       |      |

## 115 PLANNED MATING

1/4 SM 3/4 AN

BCII HSC MISS MARVEL 23L  
X KLER FORMULA 1

| CE   | BW  | WW   | YW    | ADG  | MCE | MILK | MWW  |
|------|-----|------|-------|------|-----|------|------|
| 13.3 | 0.5 | 82.2 | 137.1 | 0.35 | 9.1 | 26.2 | 67.1 |

| STAY | DOC  | CW   | YG    | MARB | BF   | REA  | API   | TI   |
|------|------|------|-------|------|------|------|-------|------|
| 11.9 | 13.1 | 60.3 | -0.01 | 0.84 | 0.01 | 0.74 | 152.2 | 92.7 |

Bred AI on 3/18/25 to KLER FORMULA 1 (ASA: 4178221). PE from 4/23/25-6/6/25 to FIVE STAR ACE M46 (4406800). Due 12/20/25. SAFE TO AI.

BCII HSC Miss Marvel 23L is a special creature, and while her pedigree may not resonate with every follower of our program, you can trust that this half-blood comes from a very intriguing lineage. Her dam, BCII Sandy 0215 is a female that has built a legacy of excellence ever since she was a very popular champion as a show heifer. Her resume of wins was impressive, and culminated with being the 2017 NWSS Reserve Champion Angus Female for Even Henning. However her career in production has only added more glitz and glam to her resume, as just a year ago a daughter by BNWZ Dignity 8019 was the Grand Champion Angus Female and Reserve Supreme Champion Overall Female at the 2025 Cattleman's Congress. Show heifer programs need to pay attention here as this W/C Loaded Up 1119Y daughter is bound to generate stock that have all the bells and whistles that it takes to raise the stock that require large checks to change hands.



BCII SANDY 0215  
DAM OF LOT 115



KLER/DFS1  
MADE TO ORDER  
MATERNAL BROTHER  
TO LOT 116

## 116 PLANNED MATING

PB SM

KLER/DFS1 STRAWBERRY WINE  
X FIVE STAR ACE M46

| CE   | BW  | WW   | YW    | ADG  | MCE | MILK | MWW  |
|------|-----|------|-------|------|-----|------|------|
| 11.1 | 1.2 | 88.1 | 134.9 | 0.29 | 6.3 | 22.0 | 65.9 |

| STAY | DOC | CW   | YG    | MARB | BF    | REA  | API   | TI   |
|------|-----|------|-------|------|-------|------|-------|------|
| 14.5 | 9.0 | 43.1 | -0.33 | 0.12 | -0.07 | 0.91 | 131.5 | 84.0 |

Bred AI on 4/23/25 to FIVE STAR ACE M46 (ASA: 4406800). PE from 6/6/25-10/1/25 to KLER CAPTAIN M112 (4411616). Due 1/29/26. SAFE TO AI.

This fine looking red head is one that is easy to gravitate towards in the sale pens. KLER/DFS1 Strawberry Wine is a purebred daughter of Remington Secret Weapon that comes from the incredible EKHCC Red Jewel 760 lineage, a cow family that needs little introduction, as their presence has been dominate over the past decade. There is a long list of breed influences to stem from the maternal powers of the "Red Jewel" cow family, as this lineage delivers a signature look that is appreciated by seedstock and commercial breeders across the nation. This dark toned, extra bold, and impressively massive bodied female is one that just screams generating potential, and her AI service to Five Star Ace M46 will be a very exciting start to the story she is bound for.





117

## KLER SSE MISCHELLY M154

TATTOO: M154 | DOB: 1/25/24 | ASA: 4385454 | BREED: 1/2 SM 1/2 AN

SCC TRADITION OF 24  
**SCC SCH 24 KARAT 838**  
 FCF PROVEN QUEEN 419  
 PROFIT  
**KLER MARIE J11**  
 K-LER RAIN MARIE

|          |    |          |     |
|----------|----|----------|-----|
| ADJ BW   | 84 | ADJ WW   | 526 |
| BW RATIO | ET | WW RATIO | ET  |

HOMOZYGOUS POLLED / HOMOZYGOUS BLACK

| CE  | BW  | WW   | YW    | ADG  | MCE | MILK | MWW  |
|-----|-----|------|-------|------|-----|------|------|
| 8.9 | 2.8 | 82.1 | 124.3 | 0.26 | 5.6 | 19.4 | 60.2 |
|     |     | 35   | 45    |      |     |      |      |

| STAY | DOC  | CW   | YG    | MARB | BF     | REA  | API   | TI   |
|------|------|------|-------|------|--------|------|-------|------|
| 12.7 | 11.9 | 45.0 | -0.06 | 0.10 | -0.010 | 0.58 | 105.1 | 72.5 |
|      |      | 30   |       |      |        |      |       |      |



118

## KLER/SSE MARIE'S DIAMOND M155

TATTOO: M155 | DOB: 2/15/24 | ASA: 4385455 | BREED: 1/2 SM 1/2 AN

SCC TRADITION OF 24  
**SCC SCH 24 KARAT 838**  
 FCF PROVEN QUEEN 419  
 PROFIT  
**KLER MARIE J11**  
 K-LER RAIN MARIE

|          |    |          |     |
|----------|----|----------|-----|
| ADJ BW   | 85 | ADJ WW   | 788 |
| BW RATIO | ET | WW RATIO | ET  |

HOMOZYGOUS POLLED

| CE  | BW  | WW   | YW    | ADG  | MCE | MILK | MWW  |
|-----|-----|------|-------|------|-----|------|------|
| 4.1 | 4.4 | 88.3 | 136.7 | 0.30 | 4.2 | 19.4 | 63.3 |
|     |     | 20   | 25    | 35   |     |      |      |

| STAY | DOC  | CW   | YG    | MARB | BF     | REA  | API   | TI   |
|------|------|------|-------|------|--------|------|-------|------|
| 13.4 | 10.3 | 52.1 | -0.09 | 0.31 | -0.009 | 0.78 | 112.1 | 78.9 |
|      |      | 20   |       |      |        | 35   |       |      |

## 117 PLANNED MATING

3/4 AN 1/4 SM

**KLER MISCHELLY M154**  
**X KLER CAPTAIN M112**

| CE   | BW  | WW   | YW    | ADG  | MCE | MILK | MWW  |
|------|-----|------|-------|------|-----|------|------|
| 11.9 | 2.2 | 92.3 | 147.9 | 0.35 | 6.8 | 26.5 | 72.5 |

| STAY | DOC  | CW   | YG   | MARB | BF   | REA  | API   | TI   |
|------|------|------|------|------|------|------|-------|------|
| 11.9 | 11.8 | 80.6 | 0.05 | 0.95 | 0.03 | 1.01 | 156.2 | 98.7 |

### Lot 117:

Bred AI on 5/30/25 to FIVE STAR ACE M46 (ASA: 4406800). PE from 6/1/25-10/1/25 to KLER CAPTAIN M112 (4411616). Due 3/27/26. SAFE TO KLER CAPTAIN M112.

A pair of phenotype highlights that stem from the KLER Marie J11 donor cow that links back to the legendary KLER Rain Marie matron that would have been a cornerstone for the KLER program. The strong influence of both the \$400,000 Profit, and the iconic "Rain Marie" combined with the industry icon, SCC SCH 24 Karat 838 has delivered upon request, with a pair of full sisters that push the limits of look and feature! With the stage that the show heifer business is at these days, it takes ultimate outliers to get the nod, and there is certainly the potential embedded here to get that job done.

### Lot 118:

Bred AI on 4/21/25 to FIVE STAR ACE M46 (ASA: 4406800). PE from 4/23/25-6/6/25 to FIVE STAR ACE M46 (4406800). Due 1/31/26. SAFE TO AI. *KLER Cattle reserve the right to one successful flush of 6 or more embryos on this female at the buyer's convenience and seller's expense.*

## 118 PLANNED MATING

3/4 SM 1/4 AN

**KLER/SSE MARIE'S DIAMOND M155**  
**X FIVE STAR ACE M46**

| CE  | BW  | WW   | YW    | ADG  | MCE | MILK | MWW  |
|-----|-----|------|-------|------|-----|------|------|
| 9.4 | 1.9 | 91.8 | 140.4 | 0.30 | 6.4 | 23.2 | 68.9 |

| STAY | DOC  | CW   | YG    | MARB | BF    | REA  | API   | TI   |
|------|------|------|-------|------|-------|------|-------|------|
| 15.8 | 11.3 | 52.2 | -0.13 | 0.30 | -0.03 | 0.78 | 135.0 | 86.3 |



**KLER/SSE TARGET 33108L**  
 MATERNAL SISTER TO LOT 117 & 118



**FIVE STAR ACE M46**  
 SERVICE & AI SIRE TO MANY



# 119 KLER MRT HOPE FLOATS M12

TATTOO: M12 | DOB: 2/8/24 | ASA: 4381398 | BREED: PB SM

RUBYS TURNPIKE 771E  
**KLER PROMOTER G15**  
 GW MISS GPRD 028X  
 MR CCF 20-20  
**ELLINGSON/STR HOPE H026**  
 EKHCC RED JEWEL 760

HOMOZYGOUS POLLED / HETEROZYGOUS BLACK

| CE  | BW  | WW   | YW    | ADG  | MCE | MILK | MWW  |
|-----|-----|------|-------|------|-----|------|------|
| 4.9 | 3.0 | 90.1 | 140.8 | 0.32 | 4.4 | 17.5 | 62.4 |
|     |     | 20   | 15    | 15   |     |      |      |

| STAY | DOC | CW   | YG    | MARB | BF     | REA  | API   | TI   |
|------|-----|------|-------|------|--------|------|-------|------|
| 8.5  | 6.7 | 44.5 | -0.39 | 0.13 | -0.068 | 1.14 | 111.9 | 83.5 |
|      |     | 20   | 40    |      |        | 10   |       | 45   |

|          |     |          |     |
|----------|-----|----------|-----|
| ADJ BW   | 83  | ADJ WW   | 754 |
| BW RATIO | 108 | WW RATIO | 122 |



**KLER ANONYMOUS 3005L**  
 \$13,500 MATERNAL BROTHER TO LOT 119

## 119 PLANNED MATING

PB SM

**KLER MRT HOPE FLOATS M12**  
**X KLER PREMIUM GRADE 3025L**

| CE   | BW  | WW   | YW    | ADG  | MCE | MILK | MWW  |
|------|-----|------|-------|------|-----|------|------|
| 10.7 | 1.2 | 86.5 | 133.0 | 0.29 | 8.7 | 23.7 | 66.8 |

| STAY | DOC | CW   | YG    | MARB | BF    | REA  | API   | TI   |
|------|-----|------|-------|------|-------|------|-------|------|
| 10.4 | 8.5 | 40.7 | -0.36 | 0.27 | -0.08 | 0.92 | 130.7 | 87.1 |



**HLTS JEWEL J191**  
 FULL SISTER TO DAM OF LOT 119



**EKHCC RED JEWEL 760**  
 LEGENDARY MATERNAL GRANDDAM OF LOT 119

Bred AI on 3/12/25 to KLER PREMIUM GRADE 3025L (ASA: 4228829). PE from 4/23/25-6/6/25 to FIVE STAR ACE M46 (4406800). Due 12/22/25. SAFE TO AI.

SALE FEATURE! Either side of the direct pedigree of the pair reveals two divisions of royalty within the Simmental Breed. KLER Promoter G15 is quickly becoming our go to sire for potentially injecting excellence, not only are they the kind that you love in person, but they come with a genomic profile that is easy to love if you like to keep your cowherd profitable. He is proving to bridge the gap of phenotype and genomic distinction. As his progeny mature and dive deeper into their production careers, it's now that his influence is truly being realized and acknowledged. On the maternal side of the pedigree reveals multiple generations of cow families that remain at the top of the game. She is a direct daughter of the Ellingson/STR Hope H026 donor that we have reaped the rewards from with several high selling sons. Diving deeper reveals the iconic EKHCC Red Jewel 760 donor who records 310 progeny with the ASA as of the 1st of January, 2026. She is truly one of the most prolific donors in the business, and we are proud to claim that she was raised by Seth's uncle, Ed Kaehler. This female tracks with the family traditions and positions herself towards being the next legendary installment to the family name, there is truly no limit to the capabilities of this female, regardless of the direction you aim her. **KLER Cattle reserve the right to one successful flush of 6 or more embryos on this female at the buyer's convenience and seller's expense.**





## 120 KLER MILL IRON DOLLY M173

TATTOO: M173 | DOB: 4/10/24 | ASA: 4498095 | BREED: 5/8 SM 3/8 AN

W/C BANKROLL 811D  
W/C FORT KNOX 609F  
K-LER DOLLY'S QUEEN 609D  
GW PREDESTINED 701T  
GW MISS GPRD 028X  
GW MISS PREM BEEF 545U

ADJ BW 80 | ADJ WW 716  
BW RATIO ET | WW RATIO ET

HOMOZYGOUS POLLED

| CE  | BW  | WW   | YW    | ADG  | MCE | MILK | MWW  |
|-----|-----|------|-------|------|-----|------|------|
| 7.6 | 0.9 | 81.7 | 134.5 | 0.33 | 5.1 | 23.9 | 64.6 |
|     |     | 40   | 25    | 20   |     |      | 45   |

| STAY | DOC  | CW   | YG    | MARB | BF     | REA  | API   | TI   |
|------|------|------|-------|------|--------|------|-------|------|
| 11.8 | 14.6 | 51.4 | -0.23 | 0.57 | -0.025 | 1.07 | 133.9 | 88.0 |
|      | 25   | 20   | 40    | 30   |        | 5    |       | 35   |



## 121 SV/KLER ENCHANTMENT 381L

TATTOO: 381L | DOB: 12/6/23 | ASA: 4408633 | BREED: PB SM

VCL FORESIGHT  
STCC TECUMSEH 058J  
HF SERENA  
MR HOC BROKER  
K-LER BLAZED ENCHANTMENT  
KLER/HERMELS ELEGANCE

ADJ BW 88 | ADJ WW 761  
BW RATIO ET | WW RATIO ET

| CE  | BW  | WW   | YW    | ADG  | MCE | MILK | MWW  |
|-----|-----|------|-------|------|-----|------|------|
| 6.9 | 3.5 | 76.1 | 106.5 | 0.19 | 2.8 | 21.2 | 59.1 |

| STAY | DOC | CW   | YG    | MARB | BF     | REA  | API   | TI   |
|------|-----|------|-------|------|--------|------|-------|------|
| 14.0 | 7.7 | 22.0 | -0.38 | 0.16 | -0.079 | 0.74 | 117.8 | 74.9 |
|      |     |      | 45    |      | 45     |      |       |      |

## 120 PLANNED MATING

PB SM

KLER MILL IRON DOLLY M173  
X RFS CREDENTIALS L49

| CE   | BW   | WW   | YW    | ADG  | MCE   | MILK | MWW   |      |
|------|------|------|-------|------|-------|------|-------|------|
| 13.0 | -1.5 | 77.9 | 129.4 | 0.32 | 8.2   | 25.9 | 64.7  |      |
| STAY | DOC  | CW   | YG    | MARB | BF    | REA  | API   | TI   |
| 15.6 | 14.9 | 43.5 | -0.23 | 0.63 | -0.02 | 1.00 | 164.6 | 93.9 |

Bred AI on 6/5/25 to RFS CREDENTIALS L49 (ASA: 4220296). PE from 6/6/25-10/1/25 to JOHNSON KLER LANDMAN 4306 (4431991). Due 3/17/26. LIKELY SAFE TO AI.

The added extension, and maternal look of KLER Mill Iron Dolly M173 promote her towards being a multipurpose female that offers a lot of utility value, and with a potent double shot of the legendary GW Miss GPRD 028X donor it is hard to gauge the potential she has to consistently generate stock of added value. Lining up the 028X influence through her mating to the \$180,000 W/C Fort Knox 609F has delivered some special results. The marketability of this female is high, and aligns with the trends of the business, as she will generate cattle that flawlessly combine genomic and phenotypic excellence.



W/C FORT KNOX 609F \$180,000 SIRE OF LOT 120

## 121 PLANNED MATING

PB SM

SV/KLER ENCHANTMENT 381L  
X KLER PREMIUM GRADE 3025L

| CE   | BW  | WW   | YW    | ADG  | MCE   | MILK | MWW   |      |
|------|-----|------|-------|------|-------|------|-------|------|
| 11.7 | 1.5 | 79.5 | 115.8 | 0.23 | 7.9   | 25.5 | 65.2  |      |
| STAY | DOC | CW   | YG    | MARB | BF    | REA  | API   | TI   |
| 13.2 | 9.0 | 29.4 | -0.36 | 0.29 | -0.08 | 0.72 | 134.0 | 82.8 |

Bred AI on 3/13/25 to KLER PREMIUM GRADE 3025L (ASA: 4228829). PE from 4/23/25-6/6/25 to FIVE STAR ACE M46 (4406800). Due 12/13/25. SAFE TO AI.

Generations of good built stock line the pedigree here. She is a direct daughter of K-LER Blazed Enchantment, the MR HOC Broker daughter that stems back to KLER/HERMELS Elegance. This purebred, black baldie female, is heavily constructed with added shape and muscle and she packs a punch when you view her from any angle. She is a direct daughter of the record setting \$620,000 STCC Tecumseh 058J, that is a son of the multimillion dollar producing, HF Serena 74Y, that has a production story that is a mile long!



STCC TECUMSEH 058J \$620,000 SIRE OF LOT 121



122

## RFG M47

TATTOO: M47 | DOB: 2/5/24 | ASA: 4336730 | BREED: 3/4 SM1/4 AN

HHS MR 847D  
KBHR REVOLUTION H071  
WS MISS SUGAR C4  
BALDRIDGE VERSATILE  
RFG KARISSA K35  
ROSSMAN SWEET FAITH 06F

ADJ BW 86 | ADJ WW 668  
BW RATIO 105 | WW RATIO 102

| CE  | BW  | WW    | YW    | ADG  | MCE | MILK | MWW  |
|-----|-----|-------|-------|------|-----|------|------|
| 5.2 | 2.4 | 106.6 | 161.6 | 0.34 | 0.8 | 19.2 | 72.6 |
|     |     | 1     | 3     | 15   |     |      | 15   |

| STAY | DOC  | CW   | YG    | MARB | BF     | REA  | API   | TI    |
|------|------|------|-------|------|--------|------|-------|-------|
| 13.7 | 16.5 | 69.0 | -0.08 | 0.67 | -0.025 | 0.82 | 143.9 | 101.2 |
|      | 10   | 2    |       | 20   |        | 25   | 35    | 5     |



123

## KMCC MISS RANDI 425

TATTOO: M425 | DOB: 3/10/24 | ASA: 4548189 | BREED: PB SM

HHS MR 847D  
KBHR REVOLUTION H071  
WS MISS SUGAR C4  
CCR COWBOY CUT 5048Z  
RCC FRANKIE F8041  
RCC SHORT EARS C5033

ADJ BW 79 | ADJ WW 601  
BW RATIO ET | WW RATIO ET

| CE  | BW  | WW   | YW    | ADG  | MCE | MILK | MWW  |
|-----|-----|------|-------|------|-----|------|------|
| 9.8 | 1.5 | 96.1 | 143.2 | 0.29 | 5.1 | 22.6 | 70.6 |
|     |     | 10   | 15    | 30   |     |      | 20   |

| STAY | DOC  | CW   | YG    | MARB | BF     | REA  | API   | TI   |
|------|------|------|-------|------|--------|------|-------|------|
| 18.1 | 16.1 | 50.1 | -0.29 | 0.34 | -0.055 | 1.00 | 152.8 | 94.8 |
|      | 25   | 10   | 10    |      | 25     | 25   | 25    | 15   |

## PLANNED MATING

122

PB SM

RFG / KLER M47

X KBHR BOLD RULER H152

| CE   | BW   | WW   | YW    | ADG  | MCE | MILK | MWW  |
|------|------|------|-------|------|-----|------|------|
| 11.2 | -0.1 | 93.4 | 147.6 | 0.34 | 6.0 | 28.4 | 75.1 |

| STAY | DOC  | CW   | YG    | MARB | BF    | REA  | API   | TI    |
|------|------|------|-------|------|-------|------|-------|-------|
| 16.2 | 17.1 | 54.4 | -0.12 | 0.80 | -0.03 | 0.69 | 174.8 | 104.9 |

Bred AI on 4/16/25 to KBHR BOLD RULER H152 (ASA: 3789539). PE from 4/23/25-6/6/25 to FIVE STAR ACE M46 (4406800). Due 1/23/26. SAFE TO AI.

We begin the KBHR Revolution H071 daughters exactly how you would expect! This 3/4 blood female is one that stands above the crowd with her genetic potential to enhance growth and performance. A quick analysis of the genetic package reveals that this donor candidate ranks among the most elite in the register for all growth traits. She is getting a kickstart in production with her AI mating to KBHR Bold Ruler H152, as this will really get her opportunities to start returning on investment off to a great start. Note that her maternal lineage stems from our legendary cornerstone, KLER Sweetness, so her daughters will be set up for success from the get go.



KLER SWEETNESS  
LEGENDARY MATERNAL GREAT GRANDDAM OF LOT 122

## PLANNED MATING

123

PB SM

KMCC MISS RANDI 425

X FIVE STAR ACE M46

| CE   | BW  | WW   | YW    | ADG  | MCE | MILK | MWW  |
|------|-----|------|-------|------|-----|------|------|
| 12.2 | 0.5 | 95.7 | 143.6 | 0.30 | 6.8 | 24.8 | 72.6 |

| STAY | DOC  | CW   | YG    | MARB | BF    | REA  | API   | TI   |
|------|------|------|-------|------|-------|------|-------|------|
| 18.1 | 14.2 | 51.2 | -0.23 | 0.32 | -0.05 | 0.89 | 154.3 | 94.2 |

Bred AI on 6/4/25 to FIVE STAR ACE M46 (ASA: 4406800). PE from 6/6/25-10/1/25 to KLER CAPTAIN M112 (4411616). Due 3/16/26. LIKELY SAFE TO AI.

KMCC Miss Randi 425 continues the trend of high growth potential KBHR Revolution H071 daughters. Her genomic tabulations read with great potential for her to increase growth and performance with her offspring. This purebred female looks like the herd bull generating kind with her added shape and power!





## 124 KLER QUEENIE MINI 1M2

TATTOO: 1M2 | DOB: 1/5/24 | ASA: 4381502 | BREED: 1/2 SM 1/2 AN

HHS MR 847D  
KBHR REVOLUTION H071  
WS MISS SUGAR C4  
SITZ TOP GAME 561X  
RIVERBEND QUEENIE C353  
RIVERBEND QUEENIE X710

|          |    |          |     |
|----------|----|----------|-----|
| ADJ BW   | 79 | ADJ WW   | 608 |
| BW RATIO | ET | WW RATIO | ET  |

| HOMOZYGOUS POLLED / HOMOZYGOUS BLACK |     |       |       |      |     |      |      |
|--------------------------------------|-----|-------|-------|------|-----|------|------|
| CE                                   | BW  | WW    | YW    | ADG  | MCE | MILK | MWW  |
| 8.8                                  | 2.8 | 102.3 | 165.7 | 0.40 | 3.0 | 26.2 | 75.4 |
|                                      |     | 2     | 2     | 3    |     | 30   | 10   |

| STAY | DOC  | CW   | YG    | MARB | BF     | REA  | API   | TI    |
|------|------|------|-------|------|--------|------|-------|-------|
| 11.6 | 16.9 | 57.9 | -0.09 | 0.82 | -0.018 | 0.78 | 152.7 | 104.1 |
|      | 10   | 10   |       | 10   |        | 35   | 25    | 3     |



## 125 KLER MADISON M98

TATTOO: M98 | DOB: 2/21/24 | ASA: 4381461 | BREED: PB SM

KLER PROMOTER G15  
EKHCC KENNEDY 208  
EKHCC ALEXIS 943  
VOLK BACKDRAFT CC F810  
SSF SAZERAC S10H  
HPF SAZERAC 320D

|          |     |          |     |
|----------|-----|----------|-----|
| ADJ BW   | 81  | ADJ WW   | 692 |
| BW RATIO | 105 | WW RATIO | 112 |

| HOMOZYGOUS POLLED / HETEROZYGOUS BLACK |     |      |       |      |     |      |      |
|--|-----|------|-------|------|-----|------|------|
| CE                                     | BW  | WW   | YW    | ADG  | MCE | MILK | MWW  |
| 8.4                                    | 1.9 | 81.9 | 121.2 | 0.25 | 4.4 | 24.0 | 64.9 |
|  |     | 40   | 45    |      |     | 45   | 45   |

| STAY | DOC | CW   | YG    | MARB | BF     | REA  | API   | TI   |
|------|-----|------|-------|------|--------|------|-------|------|
| 16.1 | 8.9 | 25.9 | -0.31 | 0.18 | -0.054 | 0.77 | 131.6 | 81.7 |
| 45   |     |      |       |      |        |      |       |      |

### 124 PLANNED MATING

3/4 AN 1/4 SM

KLER QUEENIE MINI 1M2  
X KLER CAPTAIN M112

| CE   | BW  | WW    | YW    | ADG  | MCE | MILK | MWW  |
|------|-----|-------|-------|------|-----|------|------|
| 11.9 | 2.2 | 102.4 | 168.6 | 0.42 | 5.5 | 29.9 | 80.1 |

| STAY | DOC  | CW   | YG   | MARB | BF   | REA  | API   | TI    |
|------|------|------|------|------|------|------|-------|-------|
| 11.3 | 14.3 | 87.0 | 0.03 | 1.31 | 0.03 | 1.11 | 180.1 | 114.7 |

Bred AI on 4/23/25 to FIVE STAR ACE M46 (ASA: 4406800). PE from 6/6/25-10/1/25 to KLER CAPTAIN M112 (4411616). Due 4/10/26. SAFE TO KLER CAPTAIN M112.

The Riverbend Queenie C353 matron has been a defining piece of maternal excellence for our budding Angus program, she is the dam of the \$60,000 KLER Formula 1 that is owned by Genex and Express Ranches, and was a highlight of the 2025 Production Sale with half interest selling to Loose Arrow Angus of Colorado. This half blood daughter of KBHR Revolution H071 doubles up on high powered growth genetics, and delivers one of the most impressive genomic packages to sell across the entire offering. This donor candidate ticks boxes all the way across her genetic profile, and is bound to potentially increase the growth potential of her progeny.



RIVERBEND QUEENIE C353  
DAM OF LOT 124



SSF SAZERAC S10H  
DAM OF LOT 125

### 125 PLANNED MATING

PB SM

KLER MADISON M98  
X TJ TAKE THAT 614M

| CE   | BW  | WW   | YW    | ADG  | MCE | MILK | MWW  |
|------|-----|------|-------|------|-----|------|------|
| 12.3 | 0.6 | 86.2 | 138.7 | 0.33 | 6.9 | 24.7 | 67.8 |

| STAY | DOC  | CW   | YG    | MARB | BF    | REA  | API   | TI   |
|------|------|------|-------|------|-------|------|-------|------|
| 17.9 | 13.3 | 36.6 | -0.22 | 0.44 | -0.05 | 0.66 | 158.5 | 91.9 |

Bred AI on 4/6/25 to TJ TAKE THAT 614M (ASA: 4366420). PE from 4/23/25-6/6/25 to FIVE STAR ACE M46 (4406800). Due 1/16/26. SAFE TO AI.

We love the futuristic build, and look of quality that KLER Madison M98 has been blessed with. She is built for the long haul with a running gear that is flexible, and a maternal design that looks like she will be a prime candidate to build a cow family around. Her maternal lineage stems from the legendary Sazerac cow family that has been such a popular, and successful source of excellence for programs across the nation. While she sports a very balanced and appropriate set of data, her real-world markers of quality tell the real story here, you will love this female in person! She will make great mother, and her first calf by TJ Take That 614M will be at side by sale day.



## 126 KLER MAYA M108

TATTOO: M108 | DOB: 3/10/24 | ASA: 4381470 | BREED: PB SM

KLER PROMOTER G15  
EKHCC KENNEDY 208  
EKHCC ALEXIS 943  
SK SMOOTH CRIMINAL E174  
HL MS SMOOTH CRIMINAL J68  
KAPPES SADIE W615 C315

ADJ BW 84 | ADJ WW 558  
BW RATIO 109 | WW RATIO 90

| HOMOZYGOUS POLLED / HOMOZYGOUS BLACK |     |      |       |      |     |      |      |
|--------------------------------------|-----|------|-------|------|-----|------|------|
| CE                                   | BW  | WW   | YW    | ADG  | MCE | MILK | MWW  |
| 3.2                                  | 4.7 | 88.5 | 138.8 | 0.31 | 2.5 | 18.2 | 62.3 |
|                                      |     | 20   | 20    |      |     |      |      |

| STAY | DOC  | CW   | YG    | MARB | BF     | REA  | API   | TI   |
|------|------|------|-------|------|--------|------|-------|------|
| 19.1 | 11.1 | 35.2 | -0.24 | 0.16 | -0.040 | 0.77 | 128.3 | 80.3 |
| 15   |      | 45   |       |      |        |      |       |      |



## 127 KLER MADANI M130

TATTOO: M130 | DOB: 4/5/24 | ASA: 4381483 | BREED: 3/4 SM 1/4 AN

KLER PROMOTER G15  
EKHCC KENNEDY 208  
EKHCC ALEXIS 943  
W/C LOCK DOWN 206Z  
RC MISS LOCK DOWN 414E  
RC MISS BISMARCK 454B

ADJ BW 61 | ADJ WW 667  
BW RATIO 79 | WW RATIO 108

| HOMOZYGOUS POLLED / HOMOZYGOUS BLACK |      |      |       |      |     |      |      |
|--------------------------------------|------|------|-------|------|-----|------|------|
| CE                                   | BW   | WW   | YW    | ADG  | MCE | MILK | MWW  |
| 14.0                                 | -1.6 | 79.8 | 132.5 | 0.33 | 8.4 | 19.6 | 59.6 |
| 30                                   | 25   | 45   | 30    | 20   | 30  |      |      |

| STAY | DOC  | CW   | YG    | MARB | BF     | REA  | API   | TI   |
|------|------|------|-------|------|--------|------|-------|------|
| 14.4 | 16.9 | 44.7 | -0.07 | 0.36 | -0.011 | 0.58 | 138.8 | 84.5 |
|      | 10   | 35   |       |      |        |      | 45    | 45   |

## 126 PLANNED MATING

1/2 AN 1/2 SM

KLER MAYA M108  
X KLER CAPTAIN M112

| CE  | BW  | WW   | YW    | ADG  | MCE | MILK | MWW  |
|-----|-----|------|-------|------|-----|------|------|
| 9.1 | 3.2 | 95.5 | 155.2 | 0.37 | 5.2 | 25.9 | 73.5 |

| STAY | DOC  | CW   | YG    | MARB | BF   | REA  | API   | TI    |
|------|------|------|-------|------|------|------|-------|-------|
| 15.1 | 11.4 | 75.7 | -0.05 | 0.98 | 0.01 | 1.11 | 164.8 | 101.8 |

Bred AI on 6/5/25 to RFS CREDENTIALS L49 (ASA: 4220296). PE from 6/6/25-10/1/25 to KLER CAPTAIN M112 (4411616). Due 4/6/26. SAFE TO KLER CAPTAIN M112.

A stunning baldy, KLER Maya M108 is a prime example of why we think these EKHCC Kennedy 208 daughters are going to be incredible in production. She presents a beautiful udder set up, and is bound to deliver a KLER Captain M112 calf when the grass is starting to green up. Her maternal brother HL KLER Quigley 68L was the highest marbling sire in the 2025 Sale, and was one that you could appreciate on foot too, he now works for Connor Engebretsen.



HL KLER QUIGLEY 68L  
MATERNAL BROTHER TO LOT 126

## 127 PLANNED MATING

5/8 AN 3/8 SM

KLER MADANI M130  
X KLER FORMULA 1

| CE   | BW   | WW   | YW    | ADG  | MCE  | MILK | MWW  |
|------|------|------|-------|------|------|------|------|
| 15.2 | -1.0 | 88.1 | 149.3 | 0.39 | 10.7 | 27.3 | 71.4 |

| STAY | DOC  | CW   | YG   | MARB | BF   | REA  | API   | TI    |
|------|------|------|------|------|------|------|-------|-------|
| 13.9 | 15.7 | 65.8 | 0.07 | 0.88 | 0.02 | 0.70 | 167.9 | 100.0 |

Bred AI on 5/2/25 to KLER FORMULA 1 (ASA: 4178221). PE from to FIVE STAR ACE M46 (4/23-6/6) & KLER CAPTAIN M112 (6/6-10/1). Due 2/11/26. SAFE TO AI.

A bold bodied, deep underlined female that is impressive in her build and maternal design. She stems from the RC Miss Lock Down 414E donor that also works for River Creek, and her sons have been averaging over \$7,500. KLER Madani M130 reads above breed average across her data set, and offers up a high percentage breed makeup and both homozygous polled and black genetics. Her exciting mating with KLER Formula 1 is one that has the potential to knock it out of the park this first year in production!



KLER SHEP 3114L  
MATERNAL BROTHER TO LOT 127





## 128 KLER/DFS1 LAINEY

TATTOO: M202 | DOB: 2/27/24 | ASA: 4620920 | BREED: PB SM

KLER PROMOTER G15  
**KLER GREATER GOOD 2064K**  
 HS/HLF4 GINGERSNAP  
 KLER NO WORRIES  
**KLER QUEEN 014J**  
 KLER SERENA G14

ADJ BW 74 | ADJ WW 681  
 BW RATIO 101 | WW RATIO 100

HOMOZYGOUS POLLED

| CE  | BW  | WW   | YW    | ADG  | MCE | MILK | MWW  |
|-----|-----|------|-------|------|-----|------|------|
| 6.7 | 2.0 | 90.3 | 138.5 | 0.30 | 4.6 | 23.7 | 68.8 |
|     |     | 20   | 20    | 25   |     | 45   | 25   |

| STAY | DOC | CW   | YG    | MARB | BF     | REA  | API   | TI   |
|------|-----|------|-------|------|--------|------|-------|------|
| 13.0 | 9.7 | 40.7 | -0.44 | 0.21 | -0.086 | 1.09 | 129.4 | 87.9 |
|      |     | 30   | 20    | 45   | 25     | 15   |       | 30   |



## 129 KLER MIA M63

TATTOO: M63 | DOB: 1/26/24 | ASA: 4381431 | BREED: PB SM

KLER PROMOTER G15  
**KLER GREATER GOOD 2064K**  
 HS/HLF4 GINGERSNAP  
 K-LER FRANCHISE 804F  
**KLER QUEEN 032H**  
 RC MISS TOP ELEVATE 799E

ADJ BW 82 | ADJ WW 768  
 BW RATIO 106 | WW RATIO 124

HOMOZYGOUS POLLED / HOMOZYGOUS BLACK

| CE  | BW  | WW    | YW    | ADG  | MCE | MILK | MWW  |
|-----|-----|-------|-------|------|-----|------|------|
| 5.8 | 3.4 | 112.9 | 173.3 | 0.38 | 6.8 | 26.8 | 83.1 |
|     |     | 1     | 1     | 2    | 35  | 25   | 1    |

| STAY | DOC | CW   | YG    | MARB | BF     | REA  | API   | TI    |
|------|-----|------|-------|------|--------|------|-------|-------|
| 10.9 | 8.7 | 70.4 | -0.53 | 0.39 | -0.101 | 1.64 | 141.5 | 105.2 |
|      |     | 1    | 4     | 20   | 10     | 1    | 35    | 2     |

## 128 PLANNED MATING

PB SM

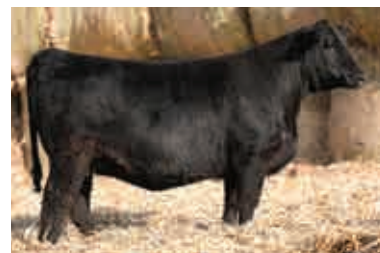
**KLER/DFS1 LAINEY**  
**X FIVE STAR ACE M46**

| CE   | BW  | WW   | YW    | ADG  | MCE | MILK | MWW  |
|------|-----|------|-------|------|-----|------|------|
| 10.7 | 0.7 | 92.8 | 141.3 | 0.30 | 6.6 | 25.4 | 71.7 |

| STAY | DOC  | CW   | YG    | MARB | BF    | REA  | API   | TI   |
|------|------|------|-------|------|-------|------|-------|------|
| 15.6 | 11.0 | 46.5 | -0.31 | 0.25 | -0.06 | 0.94 | 142.9 | 90.8 |

Bred AI on 4/9/25 to KLER R/S SHOCK WAVE M17 (ASA: 4381403). PE from to FIVE STAR ACE M46 (4/23-6/6) & KLER CAPTAIN M112 (6/6-10/1). Due 2/25/26. TOO CLOSE TO CALL.

We love the added eye appeal and lady like features of this leading KLER Greater Good 2064K daughter. KLER/DFS1 Lainey comes with predictions of adding growth and all-around profitability, and from a phenotype standpoint we think she will generate a tremendous set of daughters that you can build a cowherd from. Her dam KLER Queen 014J is turning into an awesome matron, and sets the tone for the high expectations we have for this one.



**KLER QUEEN 014J**  
 DAM OF LOT 128

## 129 PLANNED MATING

1/2 AN 1/2 SM

**KLER MIA M63**  
**X KLER FORMULA 1**

| CE   | BW  | WW    | YW    | ADG  | MCE | MILK | MWW  |
|------|-----|-------|-------|------|-----|------|------|
| 11.1 | 1.6 | 104.6 | 169.7 | 0.41 | 9.9 | 30.9 | 83.1 |

| STAY | DOC  | CW   | YG    | MARB | BF    | REA  | API   | TI    |
|------|------|------|-------|------|-------|------|-------|-------|
| 12.1 | 11.6 | 78.7 | -0.17 | 0.89 | -0.02 | 1.23 | 163.2 | 108.3 |

Bred AI on 3/10/25 to KLER FORMULA 1 (ASA: 4178221). PE from 4/23/25-6/6/25 to FIVE STAR ACE M46 (4406800). Due 12/20/25. SAFE TO AI.

Truly an outlier in this offering, and a special breeding piece that offers immense value from a build and genetic standpoint. The leading female in the offering for her ability to inject payweight and performance, KLER Mia M63 is one that stands out as an obvious candidate for embryo transfer. Her elite 1% rankings for WW, YW, MWW, CW and REA elevate her into a new category of power cow! Beyond that her top 2% TI and ADG just add more girl to her excellence. Do not second guess the opportunity to add a power injector to the roster with the homozygous polled and homozygous black KLER Mia M63.



**KLER LADY QUEEN 3076L**  
 MATERNAL SISTER TO LOT 129

130

## KLER MARGO M71

TATTOO: M71

DOB: 3/15/24

ASA: 4381436

BREED: PB SM

KLER PROMOTER G15

KLER GREATER GOOD 2064K

HS/HLF4 GINGERSNAP

K-LER CASH FLOW 528C

KLER HALLEYS FOREVER 922G

K-LER HALLEYS STAR

|          |     |          |     |
|----------|-----|----------|-----|
| ADJ BW   | 79  | ADJ WW   | 527 |
| BW RATIO | 102 | WW RATIO | 85  |

HOMOZYGOUS POLLED / HOMOZYGOUS BLACK

| CE  | BW  | WW   | YW    | ADG  | MCE | MILK | MWW  |
|-----|-----|------|-------|------|-----|------|------|
| 5.4 | 3.2 | 88.5 | 133.1 | 0.28 | 4.3 | 14.0 | 58.1 |
|     |     | 20   | 25    | 35   |     |      |      |

| STAY | DOC  | CW   | YG    | MARB | BF     | REA  | API   | TI   |
|------|------|------|-------|------|--------|------|-------|------|
| 14.6 | 12.3 | 31.4 | -0.46 | 0.10 | -0.090 | 1.03 | 121.4 | 81.2 |
|      | 45   |      | 15    |      | 25     | 20   |       |      |



## PLANNED MATING

PB SM

KLER MARGO M71

X FIVE STAR ACE M46

| CE   | BW  | WW   | YW    | ADG  | MCE | MILK | MWW  |
|------|-----|------|-------|------|-----|------|------|
| 10.0 | 1.3 | 91.9 | 138.6 | 0.29 | 6.4 | 20.5 | 66.3 |

| STAY | DOC  | CW   | YG    | MARB | BF    | REA  | API   | TI   |
|------|------|------|-------|------|-------|------|-------|------|
| 16.4 | 12.3 | 41.9 | -0.32 | 0.20 | -0.07 | 0.91 | 139.2 | 87.6 |

Bred AI on 6/4/25 to FIVE STAR ACE M46 (ASA: 4406800). PE from 6/6/25-10/1/25 to JOHNSON KLER LANDMAN 4306 (4431991). Due 3/16/26. LIKELY SAFE TO AI.

Maternally you will find that this female stems from the legendary KLER Halleys Star, a female that has stood the test of time, generating the right kind for more than a decade now and regardless of the mating she proves to continually add breeding accomplishments to her resume. She checks lots of boxes, being homozygous black and homozygous polled and is built for the long haul.

131

## KLER ELODIE M73

TATTOO: M73

DOB: 1/29/24

ASA: 4381438

BREED: PB SM

KLER PROMOTER G15

KLER GREATER GOOD 2064K

HS/HLF4 GINGERSNAP

IR/CDI COLLABORATION B783

LCDR MS ELODIE 66E

WS MISS SUGAR C4

|          |     |          |     |
|----------|-----|----------|-----|
| ADJ BW   | 78  | ADJ WW   | 610 |
| BW RATIO | 101 | WW RATIO | 99  |

HOMOZYGOUS POLLED / HETEROZYGOUS BLACK

| CE   | BW  | WW   | YW    | ADG  | MCE | MILK | MWW  |
|------|-----|------|-------|------|-----|------|------|
| 13.4 | 0.7 | 82.9 | 130.9 | 0.30 | 7.4 | 20.3 | 61.6 |
|      | 20  | 40   | 35    | 30   | 25  |      |      |

| STAY | DOC  | CW   | YG    | MARB | BF     | REA  | API   | TI   |
|------|------|------|-------|------|--------|------|-------|------|
| 19.8 | 15.0 | 21.2 | -0.30 | 0.27 | -0.053 | 0.70 | 154.0 | 86.8 |
|      | 10   | 15   |       | 35   |        |      | 20    | 35   |



## PLANNED MATING

PB SM

KLER ELODIE M73

X FIVE STAR ACE M46

| CE   | BW  | WW   | YW    | ADG  | MCE | MILK | MWW  |
|------|-----|------|-------|------|-----|------|------|
| 14.0 | 0.1 | 89.1 | 137.5 | 0.30 | 8.0 | 23.7 | 68.1 |

| STAY | DOC  | CW   | YG    | MARB | BF    | REA  | API   | TI   |
|------|------|------|-------|------|-------|------|-------|------|
| 19.0 | 13.6 | 36.8 | -0.24 | 0.28 | -0.05 | 0.74 | 154.7 | 89.9 |

Bred AI on 3/10/25 to KBHR REVOLUTION

H071 (ASA: 3789458). PE from 4/23/25-6/6/25 to FIVE STAR ACE M46 (4406800). Due 2/2/26. LIKELY DUE TO FIVE STAR ACE M46.

KLER Elodie M73 stems from a pedigree that is loaded with power! She stems back to the breed influencing WS Miss Sugar C4 donor that has generated as many AI and registered breeder herd bulls as any female with an ASA registration number. The genetic power that comes all-inclusive here is simply as powerful as you will find!



**KLER SURPLUS J3**  
MATERNAL BROTHER TO LOT 131

132

## KLER/DFS1 KELSEY

TATTOO: M387

DOB: 3/1/24

ASA: 4620921

BREED: PB SM

KLER PROMOTER G15

KLER GREATER GOOD 2064K

HS/HLF4 GINGERSNAP

WFL WESTCOTT 24C

MISS R PLUS 8230F

MISS R PLUS 1057Y

|          |    |          |     |
|----------|----|----------|-----|
| ADJ BW   | 72 | ADJ WW   | 674 |
| BW RATIO | 99 | WW RATIO | 100 |

HETEROZYGOUS BLACK

| CE  | BW  | WW   | YW    | ADG  | MCE | MILK | MWW  |
|-----|-----|------|-------|------|-----|------|------|
| 5.3 | 3.3 | 89.6 | 135.4 | 0.29 | 2.8 | 18.3 | 63.0 |
|     |     | 20   | 20    | 30   |     |      |      |

| STAY | DOC  | CW   | YG    | MARB  | BF     | REA  | API   | TI   |
|------|------|------|-------|-------|--------|------|-------|------|
| 13.0 | 11.1 | 43.7 | -0.46 | -0.06 | -0.096 | 1.13 | 110.1 | 78.3 |
|      |      | 20   | 15    |       | 15     | 10   |       |      |



## PLANNED MATING

PB SM

KLER/DFS1 KELSEY

X FIVE STAR ACE M46

| CE   | BW  | WW   | YW    | ADG  | MCE | MILK | MWW  |
|------|-----|------|-------|------|-----|------|------|
| 10.0 | 1.4 | 92.5 | 139.7 | 0.30 | 5.7 | 22.7 | 68.8 |

| STAY | DOC  | CW   | YG    | MARB | BF    | REA  | API   | TI   |
|------|------|------|-------|------|-------|------|-------|------|
| 15.6 | 11.7 | 48.0 | -0.32 | 0.12 | -0.07 | 0.96 | 133.3 | 86.1 |

Bred AI on 5/24/25 to FIVE STAR ACE M46 (ASA: 4406800). PE from 6/6/25-10/1/25 to JOHNSON KLER LANDMAN 4306 (4431991). Due 3/5/26. SAFE TO AI.

KLER/DFS1 Kelsey is built with the future in mind, her basic design screams longevity, and she looks to be the sort that will mature into the front pasture kind that the neighbors always ask about. The influence of KLER Greater Good 2064K has been prolific in St. Charles, and will continue to be through the incredible set of daughters he has generated for us!



133

## KLER MARI M13

TATTOO: M13

DOB: 12/31/23

ASA: 4381399

BREED: PB SM

RUBYS TURNPIKE 771E

KLER PROMOTER G15

GW MISS GPRD 028X

SS EXTRAORDINAIRE E513

SS GENESIS G5

STF ONYX 451W

|          |     |          |     |
|----------|-----|----------|-----|
| ADJ BW   | 86  | ADJ WW   | 766 |
| BW RATIO | 111 | WW RATIO | 100 |

| CE  | BW  | WW   | YW    | ADG  | MCE | MILK | MWW  |
|-----|-----|------|-------|------|-----|------|------|
| 9.9 | 1.7 | 78.8 | 119.3 | 0.25 | 2.4 | 18.0 | 57.3 |

| STAY | DOC | CW   | YG    | MARB  | BF     | REA  | API   | TI   |
|------|-----|------|-------|-------|--------|------|-------|------|
| 12.1 | 7.0 | 32.3 | -0.45 | -0.08 | -0.090 | 0.99 | 111.6 | 74.1 |
|      |     |      | 20    |       | 25     | 25   |       |      |



**KLER JENNY 2001K**  
MATERNAL SISTER TO LOT 133

## PLANNED MATING

PB SM

KLER MARI M13

X RFS CREDENTIALS L49

| CE   | BW   | WW   | YW    | ADG  | MCE | MILK | MWW  |
|------|------|------|-------|------|-----|------|------|
| 14.2 | -1.1 | 76.5 | 121.8 | 0.28 | 6.8 | 23.0 | 61.1 |

| STAY | DOC  | CW   | YG    | MARB | BF    | REA  | API   | TI   |
|------|------|------|-------|------|-------|------|-------|------|
| 15.7 | 11.1 | 34.0 | -0.34 | 0.31 | -0.05 | 0.96 | 148.9 | 85.4 |

Bred AI on 4/2/25 to RFS CREDENTIALS L49 (ASA: 4220296). PE from 4/23/25-6/6/25 to FIVE STAR ACE M46 (4406800). Due 1/12/26.

SAFE TO AI. KLER Mari M13 is a derivative of the legendary STF Onyx 451W donor, who you will find as her maternal granddam. This high phenotype female comes in a powerful package, and is bold and shapely in her design. We were excited to add RFS Credentials L49 to the breeding roster this past season as he looks and reads like the kind of product we are trying to supply for our customers!

134

## KLER SERENITY M30

TATTOO: M30

DOB: 1/6/24

ASA: 4381413

BREED: PB SM

RUBYS TURNPIKE 771E

KLER PROMOTER G15

GW MISS GPRD 028X

KLER NO WORRIES

KLER SERENITY 926G

K-LER SERENITY 437B

|          |     |          |     |
|----------|-----|----------|-----|
| ADJ BW   | 89  | ADJ WW   | 646 |
| BW RATIO | 115 | WW RATIO | 105 |

HOMOZYGOUS POLLED / HOMOZYGOUS BLACK

| CE  | BW  | WW   | YW    | ADG  | MCE | MILK | MWW  |
|-----|-----|------|-------|------|-----|------|------|
| 9.0 | 1.6 | 84.9 | 132.1 | 0.30 | 4.4 | 21.0 | 63.4 |
|     |     | 30   | 25    | 25   |     |      |      |

| STAY | DOC | CW   | YG    | MARB | BF     | REA  | API   | TI   |
|------|-----|------|-------|------|--------|------|-------|------|
| 13.2 | 9.8 | 35.7 | -0.51 | 0.20 | -0.100 | 1.14 | 131.8 | 85.6 |
|      |     | 40   | 10    | 45   | 15     | 10   |       | 35   |



**KLER PROMOTION 2053K**  
\$12,500 MATERNAL BROTHER  
TO LOT 134

## PLANNED MATING

PB SM

KLER SERENITY M30

X TJ TAKE THAT 614M

| CE   | BW  | WW   | YW    | ADG  | MCE | MILK | MWW  |
|------|-----|------|-------|------|-----|------|------|
| 12.6 | 0.5 | 87.7 | 144.2 | 0.36 | 6.9 | 23.2 | 67.0 |

| STAY | DOC  | CW   | YG    | MARB | BF    | REA  | API   | TI   |
|------|------|------|-------|------|-------|------|-------|------|
| 16.5 | 13.7 | 41.5 | -0.32 | 0.45 | -0.07 | 0.85 | 158.2 | 93.6 |

Bred AI on 4/12/25 to TJ TAKE THAT 614M (ASA: 4366420). PE from 4/23/25-6/6/25 to FIVE STAR ACE M46 (4406800). Due 1/22/26.

SAFE TO AI. The dam of KLER Serenity M30 has been doing an incredible job in production. Maternal brothers to M30 include the \$12,500 KLER Promotion 2053K that works for Jake Smith of WA, and the 2024 Denver bull, KLER Premium Grade 3025L that sold to Levi Elliot for \$15,000. The KLER No Worries daughter injects serious quality with every opportunity she gets! This daughter is the kind we probably should not sell, as her generating potential and power of pedigree is immense.

135

## KLER KANSA MEMORY M53

TATTOO: M53

DOB: 1/17/24

ASA: 4381423

BREED: PB SM

RUBYS TURNPIKE 771E

KLER PROMOTER G15

GW MISS GPRD 028X

WS ALL-AROUND Z35

RC MISS KANSA 485C

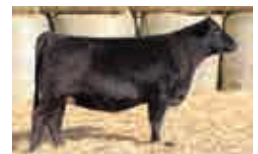
RC MISS TOP GRADE 833A

|          |    |          |     |
|----------|----|----------|-----|
| ADJ BW   | 81 | ADJ WW   | 682 |
| BW RATIO | ET | WW RATIO | ET  |

HOMOZYGOUS POLLED / HOMOZYGOUS BLACK

| CE   | BW   | WW   | YW    | ADG  | MCE | MILK | MWW  |
|------|------|------|-------|------|-----|------|------|
| 15.1 | -2.4 | 82.9 | 135.1 | 0.33 | 9.7 | 18.3 | 59.7 |
| 10   | 5    | 35   | 20    | 10   | 4   |      |      |

| STAY | DOC  | CW   | YG    | MARB | BF     | REA  | API   | TI   |
|------|------|------|-------|------|--------|------|-------|------|
| 13.6 | 10.0 | 41.7 | -0.23 | 0.29 | -0.050 | 0.75 | 151.4 | 91.2 |
|      |      | 25   |       | 35   |        |      | 25    | 20   |



**KLER/RVR KANSA LOVE L26**  
MATERNAL SISTER TO LOT 135

## PLANNED MATING

PB SM

KLER KANSA MEMORY M53

X KLER R/S SHOCK WAVE M17

| CE   | BW   | WW   | YW    | ADG  | MCE | MILK | MWW  |
|------|------|------|-------|------|-----|------|------|
| 12.8 | -1.3 | 91.2 | 144.0 | 0.33 | 8.1 | 25.4 | 70.9 |

| STAY | DOC  | CW   | YG    | MARB | BF    | REA  | API   | TI   |
|------|------|------|-------|------|-------|------|-------|------|
| 14.2 | 14.0 | 43.1 | -0.22 | 0.34 | -0.04 | 0.80 | 151.2 | 94.7 |

Bred AI on 4/2/25 to KLER R/S SHOCK WAVE M17 (ASA: 4381403). PE from 4/23/25-6/6/25 to FIVE STAR ACE M46 (4406800). Due 1/12/26. SAFE TO AI. High calving ease predictions and curve bending growth are what the science is predicting with the progeny from KLER Kansa Memory M53. This KLER Promoter G15 daughter from the RC Miss Kansa 485C matron is built with balance and smoothness, and we project to have a long and high production breeding career. You will find her on sale day with one of the first KLER R/S Shock Wave M17 progeny to ever be born!



136

## ROLH MISS MARLA 405M

TATTOO: 405M

DOB: 1/7/24

ASA: 4410951

BREED: PB SM

W/C LOADED UP 1119Y  
**GEFF COUNTY O**  
 RUBY NFF RHYTHM 475B  
 CNS DREAM ON L186  
**K-LER MY SWEET MARLA**  
 KLER SWEETNESS

|          |    |          |     |
|----------|----|----------|-----|
| ADJ BW   | 80 | ADJ WW   | 734 |
| BW RATIO | ET | WW RATIO | ET  |

| CE  | BW  | WW   | YW    | ADG  | MCE | MILK | MWW  |
|-----|-----|------|-------|------|-----|------|------|
| 6.0 | 3.9 | 75.7 | 110.2 | 0.22 | 3.4 | 15.3 | 53.0 |

| STAY | DOC | CW   | YG    | MARB | BF     | REA  | API   | TI   |
|------|-----|------|-------|------|--------|------|-------|------|
| 10.2 | 4.9 | 28.4 | -0.43 | 0.01 | -0.088 | 0.89 | 101.2 | 70.2 |
|      |     |      | 25    |      | 25     | 45   |       |      |

136

## PLANNED MATING

PB SM

**ROLH MISS MARLA 405M**  
**X TJ TAKE THAT 614M**

| CE   | BW  | WW   | YW    | ADG  | MCE | MILK | MWW  |
|------|-----|------|-------|------|-----|------|------|
| 11.1 | 1.6 | 83.1 | 133.2 | 0.32 | 6.4 | 20.4 | 61.8 |

| STAY | DOC  | CW   | YG    | MARB | BF    | REA  | API   | TI   |
|------|------|------|-------|------|-------|------|-------|------|
| 15.0 | 11.3 | 37.8 | -0.28 | 0.35 | -0.07 | 0.72 | 143.3 | 86.2 |



**GEFF COUNTY O** SIRE OF LOT 136

**Bred AI on 4/1/25 to TJ TAKE THAT 614M (ASA: 4366420). PE from 4/23/25-6/6/25 to FIVE STAR ACE M46 (4406800). Due 1/11/26. SAFE TO AI.**

ROLH Miss Marla 405M is one impressive specimen! This daughter of the Griswold Cattle sire, GEFF County O dominates your attention, as she struts with unmatched power and boldness. Her perfect blaze face complements the unwavering look of power and strong maternal value. She is a maternal granddaughter of the legendary, KLER Sweetness matron that was well ahead of her time, but one that we are so thankful to have built a cowherd around. We think her purebred mating with TJ Take That 614M has the potential to repay investment in the short term, and a heifer calf may be one that you could never think about selling! Two exciting maternal sources align here to produce a female with incredible look, presence, structure and intrigue, she has us excited to follow her story.





## 137 KLER MELODY M134

TATTOO: M134 | DOB: 4/25/24 | ASA: 4381487 | BREED: PB SM

CDI INNOVATOR 325D  
WHF FULL COVERAGE J383  
WHF 383G  
WS PROCLAMATION E202  
EKHCC ALEXIS 943  
EKHCC ALEXIS 768

ADJ BW 73 | ADJ WW 635  
BW RATIO 95 | WW RATIO 103

| HOMOZYGOUS POLLED / HOMOZYGOUS BLACK |     |      |       |      |     |      |      |
|--------------------------------------|-----|------|-------|------|-----|------|------|
| CE                                   | BW  | WW   | YW    | ADG  | MCE | MILK | MWW  |
| 10.6                                 | 1.2 | 80.9 | 128.0 | 0.29 | 6.2 | 21.8 | 62.1 |
| 45                                   |     | 45   | 35    | 30   | 45  |      |      |

| STAY | DOC  | CW   | YG    | MARB | BF     | REA  | API   | TI   |
|------|------|------|-------|------|--------|------|-------|------|
| 14.4 | 11.1 | 35.6 | -0.32 | 0.23 | -0.061 | 0.85 | 135.8 | 83.7 |
|      |      | 40   |       | 40   |        |      | 45    | 45   |



## 138 KLER MILLIE M102

TATTOO: M102 | DOB: 2/28/24 | ASA: 4381465 | BREED: PB SM

CDI INNOVATOR 325D  
WHF FULL COVERAGE J383  
WHF 383G  
W/C LOCK DOWN 206Z  
RUBY SWC YETTI D655  
SWC RUBY YETTI 143Y

ADJ BW 88 | ADJ WW 575  
BW RATIO 114 | WW RATIO 93

| HOMOZYGOUS POLLED / HOMOZYGOUS BLACK |     |      |       |      |     |      |      |
|--------------------------------------|-----|------|-------|------|-----|------|------|
| CE                                   | BW  | WW   | YW    | ADG  | MCE | MILK | MWW  |
| 3.3                                  | 3.0 | 89.7 | 142.0 | 0.33 | 2.9 | 26.0 | 70.7 |
|                                      |     | 20   | 15    | 10   |     | 30   | 20   |

| STAY | DOC  | CW   | YG    | MARB | BF     | REA  | API   | TI   |
|------|------|------|-------|------|--------|------|-------|------|
| 10.3 | 10.9 | 53.6 | -0.31 | 0.14 | -0.066 | 1.02 | 113.9 | 83.8 |
|      |      | 10   |       |      |        | 25   |       | 40   |

## 137 PLANNED MATING

PB SM  
KLER MELODY M134  
X RFS CREDENTIALS L49

| CE   | BW   | WW   | YW    | ADG  | MCE | MILK | MWW  |
|------|------|------|-------|------|-----|------|------|
| 14.5 | -1.3 | 77.5 | 126.2 | 0.30 | 8.7 | 24.9 | 63.5 |

| STAY | DOC  | CW   | YG    | MARB | BF    | REA  | API   | TI   |
|------|------|------|-------|------|-------|------|-------|------|
| 16.9 | 13.2 | 35.6 | -0.27 | 0.46 | -0.04 | 0.89 | 160.8 | 90.1 |

Bred AI on 5/28/25 to RFS CREDENTIALS L49 (ASA: 4220296). PE from 6/6/25-10/1/25 to JOHNSON KLER LANDMAN 4306 (4431991). Due 3/7/26. LIKELY SAFE TO AI.

KLER Melody M134 continues to prove the fact that these WHF Full Coverage J383 females are the type of cattle that make money in the real world, they have some extra scale and length of body, they are true performance cattle that grow and the heritability of this growth is high. This purebred female offers up a balanced array of advantageous production and performance traits.



**KLER MISS 943L**  
\$13,000 MATERNAL SISTER TO LOT 137

## 138 PLANNED MATING

PB SM  
KLER MILLIE M102  
X RFS CREDENTIALS L49

| CE   | BW   | WW   | YW    | ADG  | MCE | MILK | MWW  |
|------|------|------|-------|------|-----|------|------|
| 10.9 | -0.4 | 81.9 | 133.2 | 0.32 | 7.1 | 27.0 | 67.8 |

| STAY | DOC  | CW   | YG    | MARB | BF    | REA  | API   | TI   |
|------|------|------|-------|------|-------|------|-------|------|
| 14.8 | 13.1 | 44.6 | -0.27 | 0.42 | -0.04 | 0.97 | 149.9 | 90.3 |

Bred AI on 5/1/25 to RFS CREDENTIALS L49 (ASA: 4220296). PE from to FIVE STAR ACE M46 (4/23-6/6) & KLER CAPTAIN M112 (6/6-10/1). Due 2/10/26. LIKELY SAFE TO AI.

The second daughter of WHF Full Coverage J383 continues the trend of phenotypic excellence that you will find to be a familiar similarity with his daughters. KLER Millie M102 is homozygous black and homozygous polled, and trends very high performance with her genomic predictions. Phenotypically she hits us with huge brood cow potential, her body type reads massive and dense with extreme rib shape and body depth. Maternal sib sold for \$10,000 in '23 to Five Star Ranch 2068K.



**KLER LINEBACKER 05G**  
MATERNAL BROTHER TO LOT 138



## 139 HL QUIGLEY M-128

TATTOO: M-128 | DOB: 2/18/24 | ASA: 4341898 | BREED: 3/4 SM 1/4 AN

BAR CK TEBOW 1006X  
KBHR QUIGLEY C154  
BAR CK MS X38 106Z  
CLRS GUARDIAN 317G  
HL MS GUARDIAN K128  
HL MISS HOT LOTTO 42H

ADJ BW 75 | ADJ WW 525  
BW RATIO 102 | WW RATIO 100

| CE   | BW   | WW   | YW    | ADG  | MCE | MILK | MWW  |
|------|------|------|-------|------|-----|------|------|
| 13.0 | -2.7 | 72.6 | 112.5 | 0.25 | 7.3 | 16.0 | 52.2 |
| 40   | 15   |      |       |      | 45  |      |      |

| STAY | DOC | CW   | YG    | MARB | BF     | REA  | API   | TI   |
|------|-----|------|-------|------|--------|------|-------|------|
| 19.8 | 7.3 | 34.7 | -0.26 | 0.86 | -0.044 | 0.80 | 173.7 | 93.6 |
| 10   |     |      | 30    | 5    | 35     | 30   | 5     | 20   |



## 140 KLER QUEEN M67

TATTOO: M67 | DOB: 1/28/24 | ASA: 4381434 | BREED: PB SM

KLER MR ELEVATION 079H  
KLER 2087K  
KLER SUGAR SWEET G19  
HHS MR 866D  
KBHR MS 866D K266  
KBHR G024 MS HIGH ROAD

ADJ BW 80 | ADJ WW 725  
BW RATIO 104 | WW RATIO 100

HOMOZYGOUS POLLED / HOMOZYGOUS BLACK

| CE   | BW   | WW   | YW    | ADG  | MCE | MILK | MWW  |
|------|------|------|-------|------|-----|------|------|
| 13.6 | -1.8 | 67.1 | 105.7 | 0.24 | 8.3 | 20.8 | 54.2 |
| 20   | 10   |      |       |      | 15  |      |      |

| STAY | DOC  | CW   | YG    | MARB | BF     | REA  | API   | TI   |
|------|------|------|-------|------|--------|------|-------|------|
| 16.3 | 11.8 | 23.8 | -0.26 | 0.62 | -0.044 | 0.67 | 164.3 | 88.7 |
| 40   |      |      |       | 5    |        |      | 10    | 30   |

## 139 PLANNED MATING

3/8 SM 5/8 AN

HL QUIGLEY M-128

X JOHNSON KLER LANDMAN 4306

| CE   | BW   | WW   | YW    | ADG  | MCE | MILK | MWW  |
|------|------|------|-------|------|-----|------|------|
| 12.2 | -1.3 | 92.0 | 149.3 | 0.36 | 7.2 | 21.5 | 67.4 |

| STAY | DOC  | CW   | YG   | MARB | BF   | REA  | API   | TI    |
|------|------|------|------|------|------|------|-------|-------|
| 17.4 | 22.0 | 68.6 | 0.01 | 1.15 | 0.02 | 0.90 | 188.4 | 108.9 |

Bred AI on 5/2/25 to KLER FORMULA 1 (ASA: 4178221). PE from 6/6/25-10/1/25 to JOHNSON KLER LANDMAN 4306 (4431991). Due 5/28/26. SAFE TO JOHNSON KLER LANDMAN 4306.

We think there is a lot of potential with the production future of HL Quigley M-128. Her sire KBHR Quigley C154 is an absolute leader of the breed when it comes to carcass, calving ease and profitability indexes, and you will see this reflected in her own impressive dataset. Beyond this she comes in a power cow build, and is impressively dense and burly in her body cavity, yet still comes with a maternal look and feature.



KBHR QUIGLEY C154  
SIRE OF LOT 139

## 140 PLANNED MATING

PB SM

KLER QUEEN M67

X KLER R/S SHOCK WAVE M17

| CE   | BW   | WW   | YW    | ADG  | MCE | MILK | MWW  |
|------|------|------|-------|------|-----|------|------|
| 12.1 | -1.0 | 83.3 | 129.3 | 0.29 | 7.4 | 26.6 | 68.2 |

| STAY | DOC  | CW   | YG    | MARB | BF    | REA  | API   | TI   |
|------|------|------|-------|------|-------|------|-------|------|
| 15.6 | 14.9 | 34.1 | -0.23 | 0.50 | -0.04 | 0.76 | 157.7 | 93.4 |

Bred AI on 4/3/25 to KLER R/S SHOCK WAVE M17 (ASA: 4381403). PE from 4/23/25-6/6/25 to FIVE STAR ACE M46 (4406800). Due 1/13/26. SAFE TO AI.

Length and power are the first two things that come to mind about this bigger framed KLER 2087K daughter. KLER Queen M67 is a purebred that is supported by a standout HHS MR 866D daughter that stems from the industry respected Keller's Broken Heart Ranch of North Dakota. If you're interested in adding profitability and productivity to your calf crops then its females with the pedigree and build of M67 that you need to be marking on sale day.





**141**

## JAR LADY GETTYSBURG 0434

TATTOO: 0434 | DOB: 12/07/23 | AAA: 20882798 | BREED: PB AN

WAR CAVALRY B063 Z044  
**EZAR GETTYSBURG 1061**  
 PAF RITA 7096  
 BAR R JET BLACK 5063  
**COX LADY RESERVE 9596**  
 RB LADY RESERVE 167-522

|          |    |          |     |
|----------|----|----------|-----|
| ADJ BW   | 77 | ADJ WW   | 571 |
| BW RATIO | ET | WW RATIO | ET  |

| HOMOZYGOUS POLLED / HOMOZYGOUS BLACK |     |     |     |      |      |     |      |     |  |
|--------------------------------------|-----|-----|-----|------|------|-----|------|-----|--|
| CE                                   | BW  | WW  | YW  | DMI  | HP   | CEM | Milk | MW  |  |
| 0                                    | 4.5 | 101 | 169 | 2.26 | 10.6 | 6   | 36   | 116 |  |
|                                      |     | 2   | 8   |      |      |     | 7    | 12  |  |

| CW | MARB | RE   | FAT    | \$M | \$W | \$F | \$G | \$B | \$C |
|----|------|------|--------|-----|-----|-----|-----|-----|-----|
| 98 | 1.16 | 1.19 | -0.017 | 68  | 103 | 132 | 87  | 220 | 353 |
| 1  | 34   | 16   | 29     |     | 2   | 1   | 35  | 10  | 10  |

Bred AI on 4/23/25 to FIVE STAR ACE M46 (ASA: 4406800). PE from 6/6/25-10/1/25 to KLER CAPTAIN M112 (4411616). Due 4/10/26. SAFE TO KLER CAPTAIN M112.

The pair of purebred Angus bred heifers that sell in 2026 are cut from the mold we are trying to build! The big bodied, easy keeping, high productivity kind that leave little to the imagination in regards to their ability raises a big calf and deliver the goods to the weaning pen. There is no doubt that JAR Lady Gettysburg 0434 inherited the exceptional look and design that her lineage has become synonymous for, as the Lady Reserve females are held in the highest of regards in the high-performance Angus circles!



**COX LADY RESERVE 9596**  
 DAM OF LOT 141



**142**

## KLER STAR GAZER M124

TATTOO: M124 | DOB: 3/25/24 | AAA: PENDING | BREED: PB AN

PVF BLACKLIST 7077  
**PVF MARVEL**  
 PVF MISSIE 5245  
 BROOKING BANK NOTE 4040  
**EKHCC STAR GAZER 052**  
 EKHCC STAR GAZER 012

HOMOZYGOUS POLLED / HOMOZYGOUS BLACK

|          |     |          |     |
|----------|-----|----------|-----|
| ADJ BW   | 65  | ADJ WW   | 588 |
| BW RATIO | 100 | WW RATIO | 100 |

Bred AI on 6/5/25 to RFS CREDENTIALS L49 (ASA: 4220296). PE from 6/6/25-10/1/25 to JOHNSON KLER LANDMAN 4306 (4431991). Due 3/17/26. LIKELY SAFE TO AI.

KLER Star Gazer M124 is a high phenotype daughter of the incredible PVF Marvel that stems from the immense maternal quality of the female making Brooking Bank Note 4040 through the high performance, incredibly built 052. This Purebred Angus female is bound to generate herd building females down the road, and has quality built in that no EPD marker could encapsulate.



**Bred AI on 4/3/25 to KLER PREMIUM GRADE 3025L (ASA: 4228829). PE from 4/23/25-6/6/25 to FIVE STAR ACE M46 (4406800). Due 1/13/26. SAFE TO AI.**

We are always so proud to donate the profits from a special female to the St. Matthews Community Lutheran Preschool, where our children attend! For 2026, KLER Mellissa M94 will be sell for their benefit and our loss! This high-quality female presents a strong case as the type that is built with longevity and offers the opportunity to return dividends year after year. Don't overlook this high-quality WHF Full Coverage J383 daughter, because what she may lack in generations of cow family, she makes up for in real world quality and performance. All the hard work will be done too, as she will sell with her KLER Premium Grade 3025L sired calf at side!

**143**

## KLER MELLISSA M94

TATTOO: M94

DOB: 2/8/24

ASA: 4381457

BREED: 1/2 SM 1/2 CS

CDI INNOVATOR 325D

**WHF FULL COVERAGE J383**

WHF 383G

COMMERCIAL

**401G**

COMMERCIAL

HETEROZYGOUS POLLED / HOMOZYGOUS BLACK

|          |     |          |     |
|----------|-----|----------|-----|
| ADJ BW   | 79  | ADJ WW   | 598 |
| BW RATIO | 100 | WW RATIO | 100 |

# DONATION LOT

This year, we are honored to donate half of the proceeds from KLER Mellissa M94 to St. Matthew's Community Lutheran Preschool. St. Matthew's is a cornerstone of our small community, providing a nurturing Christian environment where children learn the values of friendship, trust, and respect while discovering their worth in God's eyes and developing a love for learning.

Our son Creed has already benefited from his experience at St. Matthew's, Colt is currently attending, and we are excited for Haven to join next year. Proceeds from this donation will go toward new STEM supplies, classroom materials, curriculum resources, and transportation repairs-important needs made possible through community support.

Supporting this lot is not only a way to enhance your operation, but also an opportunity to make a meaningful and lasting impact on our children's future and our community.



# COMMERCIAL BRED HEIFERS

## *Reputation, Quality, & Consistency*

A phenomenal set of all-black commercial bred heifers raised by Shari Overby. These females were AI'd on May 29 to KLER R/S Shock Wave and Five Star Ace, offering a strong blend of performance, phenotype, and maternal value. They are true front-pasture kind—feminine, sound, and built to work. Calves will be eligible for Half-Blood registration. Heifers are Bangs vaccinated and will be sorted into buyer-friendly groups on sale day. A great opportunity to add proven genetics from a reputation herd. Buyer may purchase one or multiple groups.

### HEALTH & BREEDING PROGRAM

**12/16/2024: Bangs vaccinated; Bov FP5+L5; Once PMH**

**12/23/2024: First round Scour Bos 9; poured**

**4/5/2025: Bov FP5+L5; Alpha 7; wormed**

**5/29/2025: AI bred**

**10/25/2025: Pregnancy checked; Vira Shield 6 + LV5**

**1/20/2026: Second round Scour Bos 9**

*A complete, well-managed set with the genetics, health, and look to build a program.*





# ASA

## QUICK EPD REFERENCE

**Expected Progeny Differences (EPDs):** EPDs are the most accurate and effective tool available for comparing genetic levels. In using EPDs, the difference between two sires' EPDs represents the unit difference expected in the performance of their progeny. For example, if sires A and B have EPDs of +10 and -5, a 15-unit difference would be expected in their progeny (moving from -5 to +10 yields 15 units). Key to using EPDs is knowing what units they are expressed in. For example, if the case referred to weaning weight EPDs, A would be expected to sire 15-pounds more weaning weight than B. If calving ease were the trait, A would be expected to sire 15-percent more unassisted births in first-calf heifers; in other words, if B sired 30 assists in a group of 100 heifers, we'd expect A to require 15 assists. A percentile-ranking chart is required to determine where a bull's EPDs rank him relative to other bulls in the breed. For percentile rankings or more detailed information about EPDs and \$ indexes visit [www.simmental.org](http://www.simmental.org). Listed below are the units ASA EPDs are expressed in:

**ALL-PURPOSE INDEX (API):**

Dollars per cow exposed under an all-purpose-sire scenario.

**AVERAGE DAILY GAIN (ADG):**

Pounds of post weaning daily weight gain.

**BACK FAT (BF):** Inches of backfat.

**BIRTH WEIGHT (BW):** Pounds of birth weight.

**CALVING EASE (CE):**

Percent of unassisted births when used on heifers.

**CARCASS WEIGHT (CW):** Pounds of carcass weight.

**DOCILITY (DOC):**

Percent of offspring achieving a docile (1) score.

**MATERNAL CALVING EASE (MCE):**

Percent of unassisted births in first-calving daughters.

**MILK (MLK):** Pounds of weaning weight due to milk.

**MARBLING (MRB):** Marbling score.

**MATERNAL WEANING WEIGHT (MWW):**

Pounds of weaning weight due to milk and growth.

**RIBEYE AREA (REA):** Square inches of ribeye.

**WARNER-BRATZLER SHEAR FORCE (WBSF):**

Pounds of force required to shear a steak.

**STAYABILITY (STAY):**

Percent of daughters remaining in the cowherd at 6 years of age.

**TERMINAL INDEX (TI):**

Dollars per cow exposed under a terminal-sire scenario.

**WEANING WEIGHT (WW):** Pounds of weaning weight.

**YEARLING WEIGHT (YW):** Pounds of yearling weight.

**YIELD GRADE (YG):** Yield grade score.

**\$ INDEXES:** Though EPDs allow for the comparison of genetic levels for many economically important traits, they only provide a piece of the economic puzzle. That's where \$ indexes come in. Through well conceived, rigorous mathematical computation, \$ indexes blend EPDs and economics to estimate an animal's overall impact on your bottom line. The same technology that led to the dramatic progress in swine, poultry and dairy genetics over the last several decades was used to develop the following \$ indexes:

**ALL-PURPOSE INDEX (API):**

Evaluates sires for use on the entire cow herd (bred to both Angus first-calf heifers and mature cows) with the portion of their daughters required to maintain herd size retained and the remaining heifers and steers put on feed and sold grade and yield.

**TERMINAL INDEX (TI):**

Evaluates sire for use on mature Angus cows with all offspring put on feed and sold grade and yield.

**USING API AND TI:**

First, determine which index to use; if you're keeping replacements use API, if not, TI. Then, just as with EPDs, zero in on the unit difference between bulls. (As described above, index units are in dollars per cow exposed.) The difference can be used to determine how much a bull is worth compared to another. Or, put another way, how much you can pay for one bull compared to another. For example, when buying an allpurpose-type sire, you can quickly figure a bull scoring +100 for API is worth an extra \$6,000 over a +50 bull if both are exposed to 30 cows over 4 years (\$50 diff. x 30 hd. x 4 yr. = \$6,000). A percentile-ranking chart is required to determine where a bull's index value ranks him relative to other bulls in the population.

*For percentile rankings or more detailed information about EPDs and \$ indexes visit [www.simmental.org](http://www.simmental.org). Important disclaimer: DO NOT compare index values of purebreds of different breeds, hybrids of different breed composition or purebreds with hybrids - our system was not developed to make valid comparison among these groups. Therefore, you must first determine the breed and breed composition appropriate for your herd and use index values to compare animals within that population.*





# Customer Testimonials..

## FRANK'S 4U RANCH SHIELD, NORTH DAKOTA

*"K-LER Cattle have been a great family to work with over the past few years. Their bulls have exceeded our expectations with great performance in our herd. We have been increasing our weaning and yearling weights along with yield grade. The Kaehlers are so friendly and willing to help market our calves. The follow through has built a great relationship between the two ranches."*

*"I have several K-LER bulls currently in my herd. Their bulls consistently produce outstanding calves-whether for feeders or replacement heifers. They are easy to work with, and the family behind K-LER is knowledgeable, supportive, and truly stands behind their cattle."*

## COREY REISER OAKS, NORTH DAKOTA

## KOPFMANN LIVESTOCK ALPENA, SOUTH DAKOTA

*"Kopfmann Livestock has purchased bulls from Seth the last few years. The low birthweight EPD bulls have made calving stress free. Not only have we had zero issues but their daughters are growing into some of the most efficient and low maintenance cows in the ranch. The bulls are very durable and easy keepers. We couldn't be happier with the performance of the bulls."*



23913 County Road 39  
St. Charles, MN 55972

# *Structured for Success*

ANNUAL PRODUCTION SALE

THURSDAY, FEBRUARY 5, 2026

