



BURNIPS EQUIPMENT CO. PRESENTS THE

36TH ANNUAL
MICHIGAN
BEEF EXPO

& MCA ANNUAL MEETING

Burnips
EQUIPMENT Co.

WWW.BURNIPS.COM

**PROUDLY SERVING
THE AG COMMUNITY.**



ARROWQUIP



HUSTLER



Priefert



Burnips
EQUIPMENT Co.

NEW HOLLAND
AGRICULTURE

CLAAS

MICHIGAN BEEF expo

FARM BUREAU PAVILION ON MICHIGAN STATE UNIVERSITY CAMPUS
4301 FARM LANE, LANSING, MI 48910

We are proud to welcome you to the 36th Annual Michigan Beef Expo! Every year, many hardworking individuals leave a positive impact on our industry and the tradition of the Expo. We look forward to celebrating Michigan's premier seedstock breeders with you here at the 2026 Michigan Beef Expo

THURSDAY, FEBRUARY 19

8:00 AM
5:30 PM
8:00 PM

MOVE IN

MSU Pavilion opens for consignor stalling and trade show set up
Michigan Cattlemen's Association Annual Meeting
Set-Up Closes

FRIDAY, FEBRUARY 20

9:00 AM

BREED SHOWS

Breed Shows Begin - Judged by Scott Trennepohl
Show Order: Simmental, Chianina & Maine Anjou, Shorthorn, All Other Registered Breeds, Hereford, Angus
Early Junior Cattle Stalling in Main Barn Available (ONLY if pre-signed up)
Trade Show Opens
Parade of Champions & Supreme Champion Recognition in Main Arena
Registration Opens for Block & Bridle Livestock Judging Contest
Buyer Registration Opens (**Same numbers will be used Friday & Saturday**)
Michigan Cattlemen's Reception Begins in Hospitality Lounge
Block & Bridle Livestock Judging Contest begins in Main Arena
Friday Night Lights Sale Begins in Hospitality Lounge
Followed by the Junior Associations Auction
Trade Show Closes
Pavilion Officially Closes

SATURDAY, FEBRUARY 21

8:00 AM
9:00 AM
9:00 AM - 12:00 PM
10:00 AM

BREED SALES

Coffee & Donuts in Hospitality Lounge
Buyer Registration Opens
Trade Show Opens
Junior Skill-A-Thon Contest
Breed Sales Begin in Auditorium
Sale Order: Simmental, Chianina & Maine Anjou, Shorthorn, All Other Registered Breeds, Hereford, Angus
Announcement of Junior Educational Awards in Hospitality Lounge
Ice Cream Social Begins in Hospitality Lounge
Designated Vendor Departure Time (if not staying till Sunday)
Junior Exhibitors can Enter through Southeast Pavilion Entrances
Junior Check in Located in Main Pavilion

SUNDAY, FEBRUARY 23

8:00 AM

JUNIOR SHOWS

Trade Show Opens
MSU Block & Bridle Showmanship Begins - South ring Senior, Junior and Pee Wee.
North ring Intermediate, Beginner, Rookie
Market Animal and Breeding Heifer show will begin 30 min after the completion of showmanship - South ring breeding heifer show. North ring Market Animal show.
Trade Show Officially Closes

12:00 PM

HOTEL OPTIONS

Group Code: Michigan Beef Expo

Hampton Inn Okemos
517-349-6100

Best Western Okemos
517-349-8700

Candlewood Suites
517-351-8181

MICHIGAN BEEF EXPO COMMITTEE

At Large Members: Earl Souva, Alex Heeg, Ken Geuns, Justin Taylor, Brigitte Grobbel and Heather Chapman

Sale Coordinator - Brandon Goering: 419-551-5461

Breed Representatives:

All Other Registered Breeds - Mary Seidelman: 616-260-3594

Michigan Angus Association - Lisa Lutchka: 517-262-5885

Michigan Chi Association - Kristina VanOrder: 269-751-5527

Michigan Maine-Anjou Association - Lorren VanOrder: 269-751-5527

Michigan Hereford Association - Jeff MacNaughton: 517-230-1253 & Dave Bielema: 616-292-7474

Michigan Shorthorn Breeders Association - Carla McLachlan: 517-242-2395

Michigan Simmental Association - Jake Homich: 616-788-8792 & Courtney Gordon Voelker: 810-304-3415

Michigan Cattlemen's Association - Sara Horton Flokstra: 269-213-7492

For more information on The Michigan Beef Expo, contact the Michigan Cattlemen's Association office at 517-347-8117 or email info@micattlemen.org.

All sales will be held in the auditorium. Online bidding will be available through CCI.Live.

NOTE: As one breed finishes its sale there will be approximately a five-minute break then the next breed will follow.

TERMS AND CONDITIONS: It is the buyer's responsibility to contact the individual consignor to take possession and pick up the animal. Each breed sale is managed by the individual Breed Association. All cattle are sold under the terms and conditions of each breed association. Checks must be made payable to the Michigan Cattlemen's Association. Questions regarding sale settlement should be directed to the breed representatives.

DISCLAIMER: The Michigan Cattlemen's Association or Michigan State University shall be held harmless nor liable for loss, theft, personal property damage or destruction, personal injury, financial obligation to collect or enforce collection of any monies between parties resulting from activities of The Michigan Beef Expo.

BUYER TRAILER MAP

DIRECTIONS:

Buyers park trailers in Lot 200 north of Pavilion.

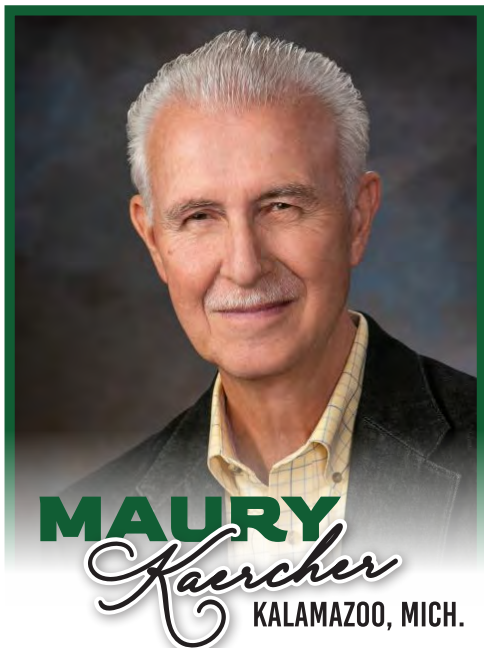
Line up along Pavilion Dr. to enter for loading out.

Proceed along back of Pavilion to park and load cattle. Please park single file to allow traffic to flow.

Once loading is complete, exit via south gate of parking lot, heading toward the South Barn and exiting onto Forest Rd.

NOTE: Please have sale receipt available to enter for load out.





INDUSTRY *Excellence* AWARD

The Michigan Beef Expo Committee is pleased to recognize Maury Kaercher of Kalamazoo, Michigan, with the Industry Excellence Award for his lifelong accomplishments and significant contributions to the Michigan Beef Expo and the Michigan agriculture industry.

Maury grew up on a small family farm in southwest Michigan, where his passion for agriculture began. After graduating from high school, he enrolled in the MSU AgTech program, completing the two-year curriculum in 1965 with a specialization in livestock. He then served five years in the U.S. Navy during the Vietnam War. Following his military service, Maury returned to Michigan State University and earned his bachelor's degree in animal science.

While at MSU, Maury was highly involved in the Block and Bridle Club and participated on the Meats Judging and Livestock Judging Teams. After graduation, he built a diverse career in agriculture, working as a vocational agriculture teacher, district representative, cow-calf operator, and community 4-H leader.

In 1984, Maury joined MSU Extension as the Kalamazoo County agriculture extension agent. He later transitioned to an area livestock agent covering multiple southwest Michigan counties in 2003 and became MSU Extension Director for St. Joseph County in 2006, a role he held until his retirement in 2011.

Maury dedicated more than 25 years of service to the Michigan Cattlemen's Association, including serving as president from 1999–2000 and being named MCA Member of the Year in 2002. As both an Extension educator and MCA leader, he played a key role in establishing Michigan's first graded, vaccinated, and verified feeder calf sales. He also served on the National Cattlemen's Beef Association International Marketing Committee.

A strong advocate for the Michigan Beef Expo, Maury chaired the trade show committee for several years and was instrumental in the Expo's growth into the premier event it is today. In 2023, he helped organize a reunion of MSU livestock judging teams, bringing together nearly 100 members spanning generations.

Maury retired after 28 years with MSU Extension, leaving a lasting legacy of leadership and innovation. Throughout his career, he and his family maintained a cow-calf operation of approximately 60 head. Maury has been married to his wife, Nancy, for over 57 years. Together, they proudly support the next generation of Spartans. The Michigan Beef Expo is honored to recognize Maury Kaercher.



Watch the Sale on CCI.live!

*The best, the fastest and most
comprehensive marketing & bidding tool!*

How to Bid Online...

- **As a buyer**, you DO NOT need to login to watch the sale but you must have a validated account to bid.

To BID ONLINE go to www.CCI.live in your Chrome, Firefox, Safari or other modern browser:

- 1) Click on the sale schedule page. 2) Click on the sale of interest.
- 3) Click on Bid Online- Register and then Get Buyer Number

- After you are logged in, you must proceed to the sale page for your auction and click Bid Online - Register, then **"Get Buyer Number."** Some auctions require valid credit card number on file to obtain a buyer number to bid.

- CCI.live will operate with ease on a modern **cellular device, laptop, desktop or tablet.**

- A **current browser** is important and will always make your experience better.

- **For successful bidding you must have good Internet service!** It is very important to be stationary if bidding. If you are driving and bidding, expect to have some service issues. If you are stationary on a good device, with healthy Internet, expect a very successful bidding environment. If you have slow Internet watch the "asking price" on the screen, it is real time, and refresh your browser if you feel like you have some lag.

- **Support line open during all sales. TEXT 405-400-9505** - Please alert the ranch for your hauling preferences.

FRIDAY NIGHT LIGHTS

Consignors

SALE MANAGER:

Brandon Goering
(419) 551-5461

SALE REPRESENTATIVE:

Jake Homich
(616) 788-8792

Earl Souva
(269) 506-6054

BURNELL FARMS

Melinda, Pat & Brandy Burnell
13822 26th St.
Gobles, MI 49055-9211
(269) 207-3912

CHERITHBROOK FARM

Matt & Tara Reeder
3011 Meridian Rd.
Okemos, MI 48864
(517) 204-5615

CT FARMS

Craig & Trisha Ulsh
10939 Flowerfield Rd.
Marcellus, MI 49067
(269) 625-1126

DOUGLASS FARMS

Austin Douglass
18433 County Road S
Alvordton, OH 43501
(419) 630-6670

DYKSTRA LIVESTOCK

Morgan Dykstra
3649 16th St.
Wayland, MI 49348
(269) 397-0454

FILHART FAMILY FARM

Ryan & Ed Filhart
5160 E Coleman Rd.
Clare, MI 48617
(989) 429-4498

FLAT RIVER LIVESTOCK

Jake & Carlie Homich
2171 S Wyman Rd.
Remus, MI 49340
(616) 788-8792

FULL CIRCLE FARMS

Josh Winslow
127 Rock Rd.
Dayton, PA 16222
(304) 904-1389

GRISWOLD CATTLE

Macee Mullett
5922 S Brush Creek Rd.
Stillwater, OK 74074
(405) 372-3300

HIDDEN DRIVES CATTLE CO.

Adam Ryder
216 W Polk Rd.
Ithaca, MI 48847
(989) 621-7149

HR CATTLE

Roger Hunker
6014 St. Rt. 113
Bellevue, OH 44811
(419) 217-2828

KASTEL SHOW CATTLE

Josh Kastel
13591 Packard Rd
Hudson MI 49247
(419) 344-3476

KAVANAGH CATTLE COMPANY

Aaron Kavanagh
276 Wales Ridge Rd.
Wales, MI 48027
(810) 305-4431

MINNAERT SHOW CATTLE

Jason Minnaert
PO Box 147
Atkinson, IL 61235
(309) 489-6024

NARROW BROOK FARMS

Matt & Tara Miller
2685 East Bellevue Hwy
Charlotte, MI 48813
(517) 202-3628

ROESTEL FAMILY SHOW CATTE

Travis & Kimberly Roestel
5716 N. Barry Rd.
Wheeler, MI 48662
(269) 425-0489

WAGNER'S SIMPLY SUPERIOR FARM

Darrell & Sue Wagner
6295 S Taylor Rd.
Sault St. Marie, MI 49783
(906) 440-4297



Image inverted



AI SIRE FOR LOT 801

Lot 801

FULL CIRCLE FARMS

CLAC BLACK SATIN 261J (PRIMROSE)

REG: 3925532 | 3/4 SIMMENTAL | EMBRYOS X 3 SEXED FEMALE

W/C RELENTLESS 32C

Sire: JSUL SOMETHING ABOUT MARY 8421

JBSF PROUD MARY

COLBURN PRIMO 5153

Dam: CLAC BLACK SATIN 261J (PRIMROSE)

JS BLACK SATIN 9B

Elite genetic opportunity here, combining quite possibly the most elite pedigrees in the entire Simmental and Angus breeds. CLAC Black Satin 261J (Primrose) is one of the newest members to the donor pen, and she is an own daughter of the famous "Boots" cow who needs no introduction. This is a mating that we have high expectations for with a big league donor who is sired by the legendary Primo - who is no stranger to the high seller lists and backdrops. This young donor is long bodied, soft made, super hairy, with an impeccable skeleton The Boots daughters are incredibly easy to mate to all the hottest sires and we feel this mating to the triple crown winning SAM will easily move the needle in the industry.



Image inverted



AI SIRE FOR LOT 802

Lot 802

FULL CIRCLE FARMS

CLAC BLACK SATIN 261J (PRIMROSE)

REG: 3925532 | 3/4 SIMMENTAL | EMBRYOS X 3 SEXED FEMALE

TL REVENANT 35

Sire: REVELATION 2K

RIED BANDED MAE

COLBURN PRIMO 5153

Dam: CLAC BLACK SATIN 261J (PRIMROSE)

JS BLACK SATIN 9B

Elite genetic opportunity here, combining quite possibly the most elite pedigrees in the entire Simmental and Angus breeds. CLAC Black Satin 261J (Primrose) is one of the newest members to the donor pen, and she is an own daughter of the famous "Boots" cow who needs no introduction. This is a mating that we have high expectations for with a big league donor who is sired by the legendary Primo - who is no stranger to the high seller lists and backdrops. This young donor is long bodied, soft made, super hairy, with an impeccable skeleton The Boots daughters are incredibly easy to mate to all the hottest sires and we feel this mating to Revelation will easily move the needle in the industry. Show heifers and donors in the making. REVELATION x PRIMO x BOOTS = big league good. Tie into some of the newest genetics we have to offer.



AI SIRE FOR LOT 803

Lot 803

KASTEL SHOW CATTLE & BS MINI ACRES

JFK HOT LIKE LAVA

REG: AR4382424 | SHORTHORN PLUS | EMBRYOS X 3

FSF PERFECTION 812

Sire: FSF DIAMOND 344T ET

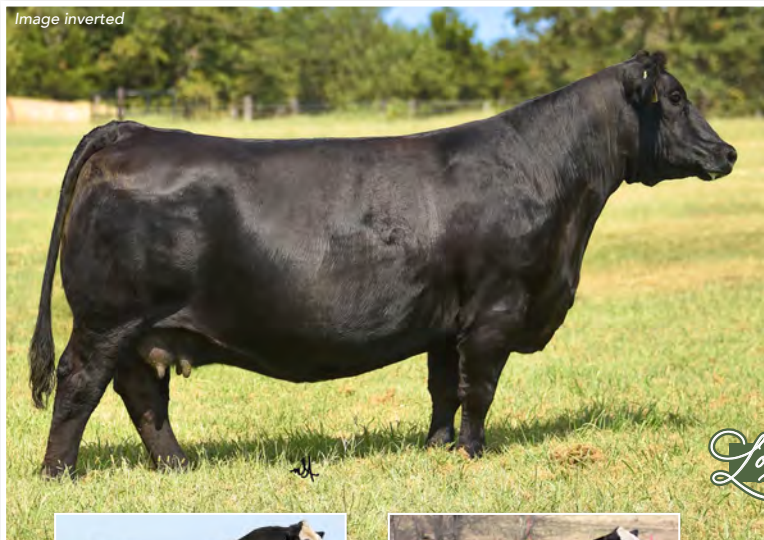
4R/FSF MONA LISA'S BURST 15F

DJS THE OUTSIDER

Dam: JFK HOT LIKE LAVA

JFK SHE'S ON FIRE

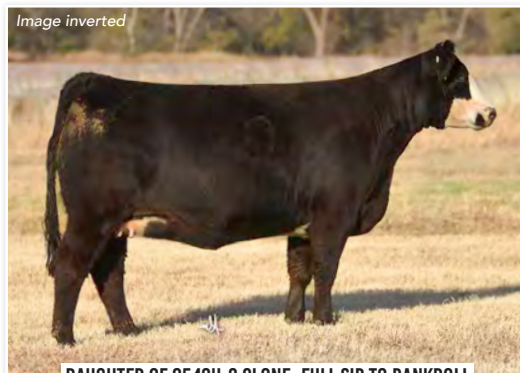
One of the first offerings from Lava, our 2025 NAILE Reserve Division Champion. We have a litter on the ground of this mating! They are big legged, stout, colorful and shaggy. Patiently waiting for her natural Hot Commodity to hit the ground so we can make more of this mating. Lava is the granddaughter of the cornerstone of our program, Fat Tina.



W/C BANKROLL 811D



AI SIRE FOR LOT 804

DAUGHTER OF 8543U-2 CLONE, FULL SIB TO BANKROLL
AND SOLD IN THE 2025 CLASSIC SALE FOR \$13,000

Lot 804

GRISWOLD CATTLE

MISS WERNING KP 8543U - 2 CLONE

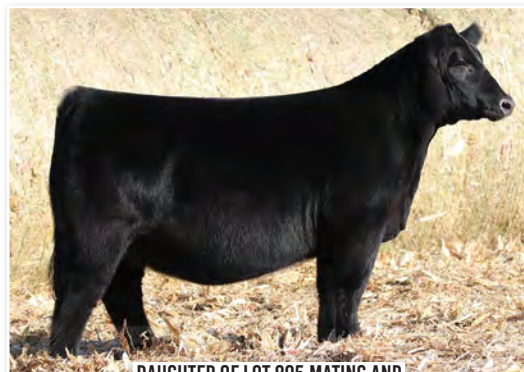
REG: 4094137 | PUREBRED SIMMENTAL | EMBRYOS X 3

Sire: REMINGTON LOCK N LOAD 54U
W/C LOADED UP 1119Y
AUBREYS BLACK BLAZE III
WAGR DREAM CATCHER 03R
Dam: MISS WERNING KP 8543U - 2 CLONE
MISS WERNING 534R

A few years back we purchased a clone to the immortal Miss Werning KP 8543U, who needs absolutely no introduction if you know anything about Simmental cattle. In our opinion, there isn't a more influential cow in the entire breed than 8543U. Bankroll, Relentless, "Family Tradition," Executive Order, Red Answer, VIP, CEO and Password are sons, just to name a few. Not to mention the countless daughters she has put into production that we could go on about for days. Needless to say, we jumped at the opportunity to purchase 8543G, the 8543U clone, and she has seen extensive use here at the G-. In her first year of production, 8543G generated over \$100,000 in sales, with one daughter selling for \$38,000. Sons of 8543G have averaged \$15,000 in the Grass to Grid, and three bred heifers averaged \$10,800 at our December Classic Female Sale.



AI SIRE FOR LOT 805

DAUGHTER OF LOT 805 MATING AND
SOLD FOR \$49,000 IN MINNAERT'S JANUARY SALE

Lot 805

MINNAERT SHOW CATTLE

MINN KATIE BABE 801F

REG: 523485 | MAINE ANJOU | EMBRYOS X 3 SEXED FEMALE

Sire: WEIS ALL ME 10F
TLAC HITS DIFFERENT 1409L ET
BOE MISS FITZY ET
SAV BISMARCK 5682
Dam: MINN KATIE BABE 801F
JSC KATIE 5S

Maine-Angus have been all the buzz lately and Minn Katie Babe 801F is why...this donor is backed by some of the most prominent sire and dam in the industry. This is the kind of Donor everyone wants in their front pasture. Lot 1 is the first daughter that we have ever offered at a public auction out of Minn Katie Babe 801F! To this point we've retained her offspring to build our cow base! Easy fleshing and great uddered what more could you ask for.



PICK YOUR CHOICE MATING!

RJ Dream Maker ("Bubbles") was awarded the 2022 MI-Show Points overall female of the year for Caleb. She is a full sib flush mate to RJ Horny, Sarah Sullivan's 2022 AJSA National Classic & NAILE Champion female. While all these banners now collect dust, this high output female makes more eggs than we have cows and I want to see more calves ...thus your opportunity. We are offering our hottest and newest matings - some first due for us in 2026, some not even implanted yet, and some full sibs to lot 616 open heifer to sell live at MBE on Saturday. This multi-use female works for Simmental, Maintainer, and clubby momma programs - **YOU PICK!** If you remember her from 2022, then you already know.



AI SIRE FOR LOT 806C



AI SIRE FOR LOT 806D



AI SIRE FOR LOT 806E

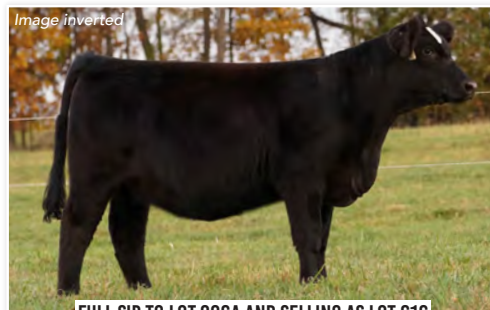


Image inverted
FULL SIB TO LOT 806A AND SELLING AS LOT 616
IN THE MICHIGAN BEEF EXPO SIMMENTAL SALE

Lot 806A

CHERITHBROOK FARM

RJ DREAM MAKER 060J

REG: 3940655 | 3/4 SIMMENTAL | EMBRYOS X 4

KRJ DAKOTA OUTLAW 6974

Sire: NEXT LEVEL

KRDL CAEDENCE C37

W/C STYLE 69E

Dam: RJ DREAM MAKER 060J

HARA'S MS HEARTBREAKER 422B

Lot 806B

CHERITHBROOK FARM

RJ DREAM MAKER 060J

REG: 3940655 | 3/4 SIMMENTAL | EMBRYOS X 4

W/C RELENTLESS 32C

Sire: JSUL SOMETHING ABOUT MARY 8421

JBSF PROUD MARY

W/C STYLE 69E

Dam: RJ DREAM MAKER 060J

HARA'S MS HEARTBREAKER 422B

Lot 806C

CHERITHBROOK FARM

RJ DREAM MAKER 060J

REG: 3940655 | 3/4 SIMMENTAL | EMBRYOS X 3 RS FEMALE

SECOND CHANCE 601H

Sire: TL ON THE RUN 106K

EC COUNTESS 283F

W/C STYLE 69E

Dam: RJ DREAM MAKER 060J

HARA'S MS HEARTBREAKER 422B

Lot 806D

CHERITHBROOK FARM

RJ DREAM MAKER 060J

REG: 3940655 | 3/4 SIMMENTAL | EMBRYOS X 3 RS FEMALE

WLE COPACETIC E02

Sire: OHL LIVIN' THE DREAM 389-1L

COWMAN'S DOODLE BUG 203D

W/C STYLE 69E

Dam: RJ DREAM MAKER 060J

HARA'S MS HEARTBREAKER 422B

Lot 806E

CHERITHBROOK FARM

RJ DREAM MAKER 060J

REG: 3940655 | 1/4 MAINTAINER 1/4 SIMMENTAL | EMBRYOS X 4 RS FEMALE

BPF MERCEDES BENZ 131U

Sire: NMR MATERNAL MADE

NMR 0-04X

W/C STYLE 69E

Dam: RJ DREAM MAKER 060J

HARA'S MS HEARTBREAKER 422B


Lot 807

BURNELL FARMS

ROSE APEX 3204L

 REG: 550530 | 3/8 MAINE 1/2 ANGUS | **SEMEN X 1 SEXED FEMALE**

BK XIKES X59

Sire: TJSC END GAME 616 ET

TJSC MISS HARMONY 58C

KR CASINO 6243

Dam: UDE QUEEN RUTH 502

KDJ QUEEN RUTH 502

Hard to find ROSE Apex semen (let alone sexed female semen!) since CEG announced back in October the serious injury to the bull that forced them to remove all semen from the open market. With the uncertainty of his return, you do not want to sleep on this one! Semen available for pick up at MBE or can be shipped (buyers expense) through Great Lakes Sires


Lot 808A

WAGNER'S SIMPLY SUPERIOR FARM

W/C RELENTLESS 32E

 REG: 3045559 | PUREBRED SIMMENTAL | **SEMEN X 2 UNITS**

GCC HARD AS STEEL 144W

Sire: YAEDLEY UTAH Y361

MISS YARDLEY T170

WAGR DREAM CATCHER 03R

Dam: MISS WERNING KP 8543U

MISS WERNING 534R

King of the Rings! Sire of numerous donor cows and AI sires including "Something About Mary". Semen is stored at GGS Genetics.

CED	BW	WW	YW	MILK	REA	MARB	API	TI
6.3	3.2	71.6	91.6	15.4	1.04	.19	108.7	72.5


Lot 808B

WAGNER'S SIMPLY SUPERIOR FARM

JSUL SOMETHING ABOUT MARY 8421

 REG: 3565879 | PUREBRED SIMMENTAL | **SEMEN X 2 UNITS**

YARDLEY UTAH Y361

Sire: W/C RELENTLESS 32C

MISS WERNING KP 8543U

YARDLEY HIGH REGARD W242

Dam: JBSF PROUD MARY

BROOKS STEEL MAGNOLIA X57

SAM is one of the most complete, prolific and powerful Simmental bulls every seen. His progeny are highly sought after and have demand a premium in on-line sales and across the auction block. Semen is store at GGS Genetics.

CED	BW	WW	YW	MILK	REA	MARB	API	TI
10.2	1.5	75.1	115.1	7.7	.98	-.02	108.1	72.2



Lot 808C

WAGNER'S SIMPLY SUPERIOR FARM

GCC WHIZARD 125W

REG: 2511023 | 1/2 SIMMENTAL | **SEMEN X 1 UNIT**

Sire: CNS DREAM ON L186
SVF STEEL FORCE S701
SVF SHEZA BEAUTY L901

Dam: CHILL FACTOR
MISS CHIL 1829
POWERS SKYLAND EMULOUSAN

Whizard can be bred to a variety of different types and kind of cattle and produces daughters that have the eye appeal, big bellied, moderate made look that is demanded. His daughters are in high demand and his semen is no longer on the open market. Stored at GGS Genetics.

CED	BW	WW	YW	MILK	REA	MARB	API	TI
10.4	0.1	58.4	89.1	19.4	.69	.03	95.1	60.7



Image inverted



Lot 809

FULL CIRCLE FARMS

RWW THURSDAY (GINGER)

REG: 3621261 | PUREBRED SIMMENTAL | **EMBRYOS X 3 SEXED FEMALE**

Sire: BAILEY'S ONE OF A KIND
WINSLOW'S REDMAN
STCC BASES LOADED 5177 (LOLA)

Dam: BROKER
RWW THURSDAY (GINGER)
MISS DRT WEDNESDAY 719W (MEYER 734)

Who doesn't love a red baldy? Better yet, who doesn't love a big, burly red baldy Broker daughter? Broker is almost always found in the pedigrees of some of the most successful females in the industry. Unique opportunity to create red baldy PB Simmental females with our powerhouse Ginger donor and our incredible herd sire, Redman. We have such great anticipation of what she can contribute to the red-hided segment of the Simmental breed. Ginger is everything we strive to create in our donor pen - incredible body capacity, huge feet, stout, and good looking. Progeny will register Purebred Simmental. Get in on the ground floor of something exciting. Owned with ERV Cattle



Image inverted

Lot 810

FULL CIRCLE FARMS

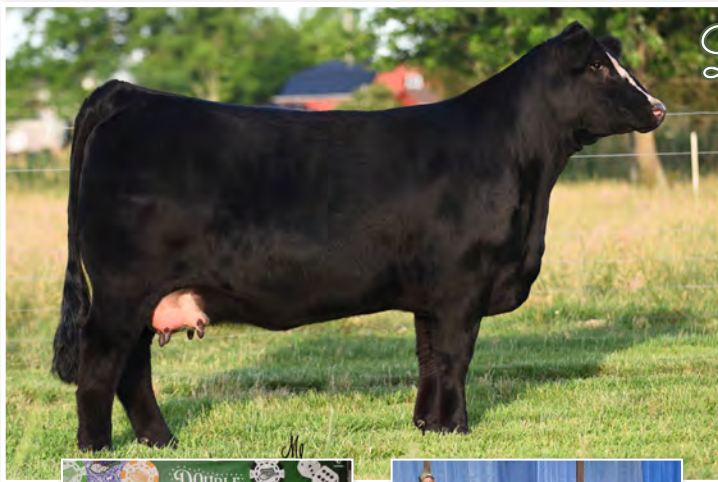
RWW THURSDAY (GINGER)

REG: 3621261 | PUREBRED SIMMENTAL | **EMBRYOS X 3 SEXED FEMALE**

Sire: 3045559
SOMETHING ABOUT MARY
2995924

Dam: BROKER
RWW THURSDAY (GINGER)
MISS DRT WEDNESDAY 719W (MEYER 734)

There are a few certainties in life, and one of those is that SAM just flat works on Broker daughters. Big time red baldy opportunity! Exciting offering on our Ginger donor. Who doesn't love a red baldy? Better yet, who doesn't love a big, burly red baldy Broker daughter? Broker is almost always found in the pedigrees of some of the most successful females in the industry. One of our newest additions, Ginger, was introduced into our donor pen with great anticipation of what she can contribute to the red-hided segment of the Simmental breed. Our offering is an absolute no-brainer when it comes to combining some of the most notable animals in the today's industry - SAM and Broker - with a shot of Meyer 734. Ginger is everything we strive to create in our donor pen - incredible body capacity, huge feet, stout, and good looking. Progeny will register Purebred Simmental with a guarantee to be red and a huge opportunity for the highly sought after red baldy. Get in on the ground floor of something exciting.



Lot 811

HR CATTLE

BMW ACE 408 ET

REG: 391181 | 7.20% CHI | **EMBRYOS X 3 SEXED MALE**

WALKS ALONE

Sire: HERE I AM

GORS 805

MR HOC BROKER

Dam: BMW ACE 408 ET

MS ROCKN ACE 36U

We are excited to offer an embryo package on our BMW ACE 408E Donor. ACE certainly earned her keep during her show career, claiming Champion Cow/Calf Pair honors at the 2019 Chi Jr Nationals, following her class win in 2018, and securing Reserve Division Champion at the 2018 NAILE SimSolution show.



2019 CHAMPION PAIR CHI JR NATIONALS



2018 RES. DIVISION NAILE



2024 MICHIGAN BEEF EXPO SUPREME BULL
AND FULL SIB TO 812A MATING



AI SIRE FOR LOT 812A



2025 MI CATTLEMEN'S CLASSIC CHAMPION
PUREBRED SIMMENTAL FEMALE AND
FULL SIB TO 812B MATING



AI SIRE FOR LOT 812B

Lot 812A

FLAT RIVER LIVESTOCK

BCII SCM ANNIE 012J

REG: 3961165 | PUREBRED SIMMENTAL | **EMBRYOS X 3**

W/C FORT KNOX 609F

Sire: W/C BET ON RED

W/C ANGEL 7113E

HPF QUANTUM LEAP Z952

Dam: BCII SCM ANNIE 012J

CLAC ANNA MARIE 437E

PICK YOUR CHOICE MATING!

Our young purebred Simmental donor who has been making her mark on the industry. Her first natural Bet On Red bull wins MI Beef Expo and sets a sale record headed to Texas. We have followed that bulls' journey in Texas and he has sure had a standout first calf crop! Quinn continues to prove her worthiness as a donor with a standout Broker heifer, being shown by the Wilczynski family this year, and some fall full sib Bet On Reds that we are excited to promote. Don't miss the opportunity to raise a standout! **Selling choice Broker or Bet On Red.**

Lot 812B

FLAT RIVER LIVESTOCK

BCII SCM ANNIE 012J

REG: 3961165 | PUREBRED SIMMENTAL | **EMBRYOS X 3**

SVF STEEL FORCE S701

Sire: MR HOC BROKER

JM BF H25

HPF QUANTUM LEAP Z952

Dam: BCII SCM ANNIE 012J

CLAC ANNA MARIE 437E



AI SIRE FOR LOT 813A

Lot 813A

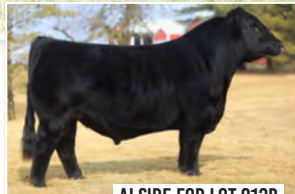
WAGNER'S SIMPLY SUPERIOR FARM

MISS CCF SHEZA BABE U2

REG: 2427972 | PUREBRED SIMMENTAL | EMBRYOS X 1

WBFS SIGNIFICANT B132
Sire: RUBYS TURNPIKE 771E
 RUBYS MISS CLEO 240Z
 SVF/NJC BUILT RIGHT N48
Dam: MISS CCF SHEZA BABE U2
 SVF SHEZA FANTASY N906

Sheza Babe is renowned for her superior genetics and the success of her progeny in sales and show rings.



AI SIRE FOR LOT 813B

Lot 813B

WAGNER'S SIMPLY SUPERIOR FARM

CHEZ STCC MILEY 5034C

REG: 3045387 | PUREBRED SIMMENTAL | EMBRYOS X 1

TJ MAIN EVENT 503B
Sire: CDI INNOVATOR 325D
 CDI MS SHEAR FORCE 49U
 MR HOC BROKER
Dam: CHEZ STCC MILEY 5034C
 GF/HS MILEY X243

Miley is a past Grand Champion of the Dixie National, Reserve Champion of the Indiana State Fair, and a Reserve Division Champion at the NAILE.



AI SIRE FOR LOT 813C

Lot 813C

WAGNER'S SIMPLY SUPERIOR FARM

ONE EYED MARY 410D

REG: 3131266 | 1/2 SIMMENTAL | EMBRYOS X 1 SEXED FEMALE

GAMBLES HOT ROD
Sire: SILVEIRAS STYLE 9303
 CHAMPION HILL LADY 703
 TLLC ONE EYED JACK
Dam: ONE EYED MARY 410D
 LAZY H PERFECT POWER Z36

Mary is a past high seller at the Gettysburg Stars and Stripes sale. She is the complete package. She is striking to look at, prolific and makes females that go on to become great front pasture cows.


Lot 814

CT FARMS

TAYLORS INDIAN OUTLAW

 REG: 347827 | CROSSBRED | **SEMEN X 3 UNITS**

Sire: BHCS HEAT SEEKER 2356
 KBCC TANK 9954J
 KBCC CH X HH X AN 524
 AHL DOUBLE STUFF 306
Dam: TAYLOR'S IMAGE MAKER 99
 TAYLORS IMAGE MAKER

This bull goes back to the Maine bull Heat Seeker on his sire's side and the Shorthorn bull Double Stuff on his dam's side. He passed away at a very young age so not a lot of semen was ever collected so this lot is rare. We have used him many times and have had great success both for champion club steers and for breeding stock heifers. The heifers are great milkers resulting in sound stocky calves at weaning.

CED	BW	WW	YW	MILK	REA	MARB	API	TI
6.2	3.7	37.7	47.1	15.2	.37	.03	83.8	54.9


Lot 815

BURNELL FARMS

W/C BET ON RED

 REG: 3808091 | PUREBRED SIMMENTAL | **SEMEN X 2 UNITS**

Sire: W/C BANKROLL 811D
 W/C FORT KNOX 609F
 W/C MISS ANGEL 2870Z
 W/C RELENTLESS 32C
Dam: W/C ANGEL 7113E
 W/C MISS ANGEL 2870Z

Here is your chance to get the highly sought after W/C Bet on Red, a beautiful red PB Simmental bull. After his death in May of 2025, semen is very limited. Don't sleep on this one! Semen is on site at MBE or can arrange for shipping through Great Lakes Sires (buyers expense).

CED	BW	WW	YW	MILK	REA	MARB	API	TI
10.8	1.1	74.9	112.7	21.4	1.13	.2	122.2	79.5


Lot 816

WAGNER'S SIMPLY SUPERIOR FARM

PVF BLACKBIRD 1010

 REG: 17021595 | ANGUS | **EMBRYOS X 3 SEXED FEMALE**

Sire: B C LOOKOUT 7024
 PVF SURVEILLANCE 4129
 PVF ELLEN 9100
 S A V BRILLIANCE 8077
Dam: PVF BLACKBIRD 1010
 PVF BLACKBIRD 304

PVF Blackbird 1010 is a past National Atlantic Champion. This mating to Surveillance has been very successful. \$8,500 full sib to embryos is pictured.



AI SIRE FOR LOT 816



Lot 817A

WAGNER'S SIMPLY SUPERIOR FARM

SILVEIRAS STYLE 9303

REG: 16427563 | ANGUS | SEMEN X 1 SEXED FEMALE

Sire: FAMOUS 7001
GAMBLES HOT ROD
CHAMPION HILL LADY 703
TWIN VALLEY PRECISION E161
Dam: SILVEIRA ELBA 2520
D A R ELBA 55

Style is the most proven, most famous, and most consistent bull in the entire show cattle industry. Style daughters have won more shows in more breeds than any bull in history. Semen is store at GGS Genetics.

CED	BW	WW	YW	MILK	REA	MARB	\$B	\$C
4	2.8	43	76	16	.20	.47	101	116



Lot 817B

WAGNER'S SIMPLY SUPERIOR FARM

PVF BLACKLIST 7077

REG: 18944889 | ANGUS | SEMEN X 3 UNITS

Sire: S A V BRILLIANCE 8077
PVF INSIGHT 0129
PVF MISSIE 790
DAMERON FIRST CLASS
Dam: PVF BACKBIRD 3070
ALL PVF BLACKBIRD 645

Blacklist is an incredibly stout, athletic individual, who offers tremendous rib shape and dimension in a powerfully balanced package. Semen is stored at GGS Genetics.

CED	BW	WW	YW	MILK	REA	MARB	API	TI
2	4.2	69	118	17	1.24	.29	165	242



Lot 818A

NARROW BROOK FARMS

NBS DAPHNE 36A

REG: 4201271 | SHORTHORN | EMBRYOS X 3 RS FEMALE

Sire: CF SOLUTION X ET
SULL RED KNIGHT 2030 ET
K-KIM MONA LISA 157N ET
PET NBS FLYBOT 747 ET
Dam: NBS DAPHNE 36A
NBS DAPHNE 036 ET

This is a mating you can take to the bank and we have. Make the investment! SULL Red Knight is probably one of the most elite sires in the breed today and the Regal Daphne's have produced champions at the state and national level. Overall HIGH Selling heifer at the Ohio Beef Expo, Division Champion at the Shorthorn Junior Nationals and most recently, Champion Shorthorn Heifer (ring B) at Michigan Winter Classic. And then there is the full sib at home, a replica of 36A and future donor at Narrow Brook.



AI SIRE FOR LOT 818A



AI SIRE FOR LOT 818B

Lot 818B

NARROW BROOK FARMS

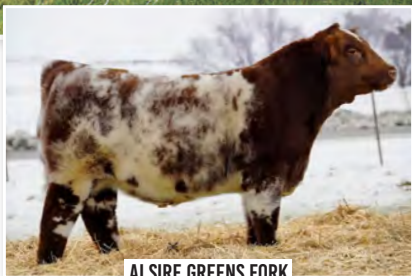
NBS DAPHNE 36A

REG: 4201271 | SHORTHORN | EMBRYOS X 3 SEXED FEMALE

Sire: SULL RGLC LEGACY 525 ET
HD RUBY 903
PET NBS FLYBOT 747 ET

Dam: NBS DAPHNE 36A
NBS DAPHNE 036 ET

Daphne 36A has worked with almost every bull we have mated her with and SULL Propel was a no-brainer. This Propel daughter, who sold in the past Revival sale, was admired by Shorthorn breeders far and wide.



AI SIRE GREENS FORK

Lot 818C

NARROW BROOK FARMS

NBS DAPHNE 36A

REG: 4201271 | SHORTHORN | EMBRYOS X 2 SEXED FEMALE

Sire: BYLAND FLASH 9U106
GILMANS GREENS FORK 50K ET
WAUKARU LASSIE 2024
PET NBS FLYBOT 747 ET

Dam: NBS DAPHNE 36A
NBS DAPHNE 036 ET

Lot 818C

NARROW BROOK FARMS

NBS DAPHNE 36A

REG: 4201271 | SHORTHORN | EMBRYOS X 2 RS FEMALE

Sire: SULL RIGHT DIRECTION ET
BFS LCCC AFLC DIRECT DEPOSIT 2254 ET
BFS MARGIE LL 950
PET NBS FLYBOT 747 ET

Dam: NBS DAPHNE 36A
NBS DAPHNE 036 ET

Two options in one package here. Sired by the Show Bull of the Year or, the promising new herdsire at Shadybrook Farms who's first calf crop was powerful and consistent. We can't wait for these matings to hit the ground at home!



AI SIRE DIRECT DEPOSIT



Lot 819A

NARROW BROOK FARMS

PET NBS FLYBOY 747 ET

REG: 4126074 | SHORTHORN | SEMEN X 5 UNITS

WHR SONNY 8114
Sire: LITTLE CEDAR AVIATOR 503X
NPS ROSES RIDER 031 ET

NBS RED BARON
Dam: NBS ANGELICA 195P
NARROW BROOK ANGEL EQ

CED	BW	WW	YW	MILK	REA	MARB	\$BMI
10	2.3	39	53	25	.55	-.99	116.69

Flyboy is a cowmaker and sire of our two best donors. He sires champions!



Lot 819B

NARROW BROOK FARMS

PET NBS FLYBOY 747 ET

REG: 4126074 | SHORTHORN | SEMEN X 3 UNITS

WHR SONNY 8114
Sire: LITTLE CEDAR AVIATOR 503X
NPS ROSES RIDER 031 ET

NBS RED BARON
Dam: NBS ANGELICA 195P
NARROW BROOK ANGEL EQ

CED	BW	WW	YW	MILK	REA	MARB	\$BMI
13	2.3	30	41	18	.06	-.04	105.69

Frazier is the very best son of Daphne 36A. Like Flyboy, Frazier daughters are beautiful uddered cows that are raising some of our best AI calves.



Lot 819C

NARROW BROOK FARMS

NBS FRAZIER A36F

REG: 4269228 | SHORTHORN | SEMEN X 5 UNITS

KOLT AA AXIS 208Y
Sire: 3BC BATTLE AX 1491
3BC MCDEE 0904

PET NBS FLYBOY 747 ET
Dam: NBS DAPHNE 36A
NBS DAPHNE 036 ET

Lot 819D

NARROW BROOK FARMS

NBS FRAZIER A36F

REG: 4269228 | SHORTHORN | SEMEN X 3 UNITS

KOLT AA AXIS 208Y
Sire: 3BC BATTLE AX 1491
3BC MCDEE 0904

PET NBS FLYBOY 747 ET
Dam: NBS DAPHNE 36A
NBS DAPHNE 036 ET

Lot 819E

NARROW BROOK FARMS

NARROW BROOK ACE HIGH TPX ET

REG: 4010673 | SHORTHORN | SEMEN X 5 UNITS

PHILDON CUNIA DIVIDEND
Sire: CF TRUMP X
CF CARMELE NG NG 158X

HS RODEO DRIVE 062WR
Dam: M & H SIMANTHA 9216
SIMANTHA MARQUITA 2446

Lot 819F

NARROW BROOK FARMS

NARROW BROOK ACE HIGH TPX ET

REG: 4010673 | SHORTHORN | SEMEN X 3 UNITS

PHILDON CUNIA DIVIDEND
Sire: CF TRUMP X
CF CARMELE NG NG 158X

HS RODEO DRIVE 062WR
Dam: M & H SIMANTHA 9216
SIMANTHA MARQUITA 2446

CED	BW	WW	YW	MILK	REA	MARB	\$BMI
6	3.5	35	51	20	.01	0.0	91.63

Ace was a true breeding bull for us in the early 2000's. He sired two Supreme Champion Bulls at the MI Beef Expo for us as well as daughters who pulled their weight in both the show ring and the cow herd.



MATERNAL GRANDDAM TO LOT 820



FULL SIB STEER SOLD LAST FALL

DAUGHTER OF SHE'S ON FIRE AND DONOR
2025 NAILE RES. DIVISION SHORTHORN PLUS FEMALE

Lot 820

KASTEL SHOW CATTLE

SHE'S ON FIRE

REG: COMMERCIAL | CROSSBRED | EMBRYOS X 3

Sire: SACRED GROUND*Dam:* 10AK
SHE'S ON FIRE
FAT TINA

She's on Fire is the direct daughter of one of the most standout donors in the country, Fat Tina. She's already produced greats like Lava and Burn it Down who sold for \$20,000 and \$15,000 for half interest, respectively. Full sib steer to this mating sold to Missouri this past fall.



FULL SIB TO MATING FOR LOT 821

MATERNAL SIB TO LOT 821
Sired by HERE I AM

Lot 821

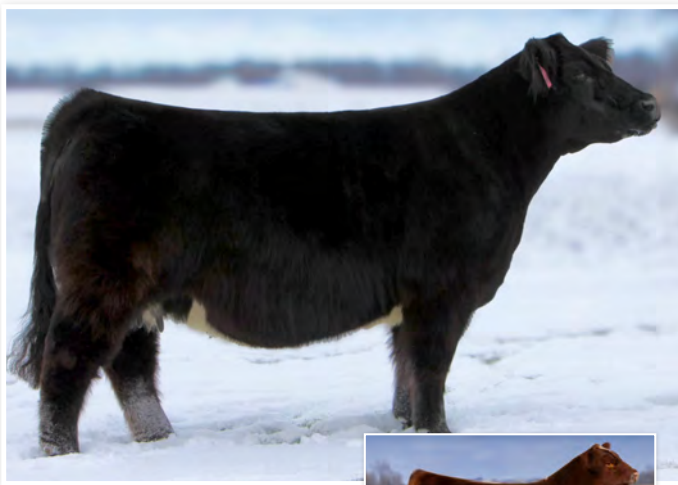
DOUGLASS FARMS

CLAC BLACK SATIN 408F

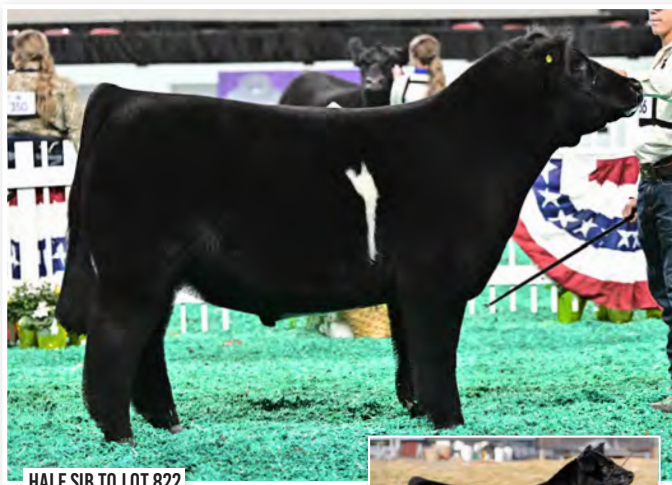
REG: 3473475 | 1/2 SIMMENTAL | EMBRYOS X 3

Sire: HERE I AM
NEW WORLD ORDER
THOMPSON/DIECKMANN 7/35*Dam:* LLSF UPRISING Z925
CLAC BLACK SATIN 408F
JS BLACK SATIN 9B "BOOTS"

Consistency! Our 408 donor has been knocking it out of the park the last couple years. Backed by the Legendary "Boots" donor of Griswold/Campbell's, these are must have embryos. Maternal sib to these embryos was no stranger to the backdrop for the Shupe family, securing numerous Top 5 finishes. The Depcinski family is campaigning a full sib to these embryos this year, and is already off to a hot start. Only chance to buy these embryos this year is right here, bid with confidence.



AI SIRE FOR LOT 822A



HALF SIB TO LOT 822



AI SIRE FOR LOT 822B

Lot 822A

ROESTEL FAMILY SHOW CATTLE

RFSC HAZEL 614

REG: COMMERCIAL | CROSSBRED | EMBRYOS X 3 SEXED MALE

Sire: HOW GREAT THOU ART
RED AND WHITE DELIGHT
LIL RED/WALKS ALONE

Dam: HERE I AM
RFSC HAZEL 614
BROKER/DR. WHO

Lot 822B

ROESTEL FAMILY SHOW CATTLE

RFSC HAZEL 614

REG: COMMERCIAL | MAINTAINER | EMBRYOS X 3

Sire: WEIS ALL ME 10F
JABR ALL MIGHTY 250K
JABR MISS DATA 9826 ET/DATA BANK

Dam: HERE I AM
RFSC HAZEL 614
BROKER/DR. WHO

PICK YOUR CHOICE MATING!

Hazel's time in the pasture has been short but very impactful. From her first calf crop she generated a BDR heifer worth retaining and a M2O steer that sold to Florida for 15k. The steer has been successfully campaigned winning jackpots and was recently named 2nd in class 3 at NAILE. **We are offering buyers choice of 3 Red N White Delights sexed Male IVF Embryos or 3 JABR All Mighty 250K unsexed IVF Embryos.** RWD is a HGTA x RJ/Heckman Lil Red- we think he will be very successful on Hazel. This mating also has a high probability of generating you some color as Hazel is a red gene carrier. The All Mighty Mating makes Maintainer registrable calves and should result in cattle that are highly sought after when paired with Hazel's muscle and look. Donor is THC PHAF DSC.



Image inverted



AI SIRE FOR LOT 823

Lot 823

MINNAERT SHOW CATTLE

HOLTKAMP BIG SEXY 326

REG: 502214 | CLUB CALF | EMBRYOS X 3 SEXED MALE

Sire: HOW GREAT THOU ART
TREINAN 613(BROKER)
PREDATOR 19U

Dam: BIG SEXY 326
HOLTKAMP 19X

Big Sexy is cobra necked, tree trunk legged, and ground sow bellied. We can go on and on about this powerhouse donor but just study her picture and video and see for yourself! Get in early, bid early and bid often, this is a set of embryos worth owning!! Full sibs by HGTA out of Big Sexy have sold for \$28,500, \$22,000 and \$16,000. This mating flat out works!


Lot 824A

NARROW BROOK FARMS

NBS LAYLA XG

REG: AR4351226 | SHORTHORN PLUS | EMBRYOS X 3 SEXED FEMALE

STUDERS UNIVERSAL 10B

Sire: BYLAND FLASH 9U106

BYLAND CINDY BEAUTY 5M106

PET NBS FLYBOY 747 ET

Dam: NBS LAYLA XG
ALI COW

Full sibs to the 2025 Champion Shorthorn Plus and Third Over-All at the Michigan State Fair. A full sister sells on Saturday, as Lot 512 in the Shorthorn Sale.



AI SIRE FOR LOT 824A

Lot 824B

NARROW BROOK FARMS

NBS LAYLA XG

REG: AR4351226 | SHORTHORN PLUS | EMBRYOS X 3 RS FEMALE

SULL RIGHT DIRECTION ET

Sire: BFS LCCC AFLC DIRECT DEPOSIT 2254 ET

BFS MARGIE LL 950

PET NBS FLYBOY 747 ET

Dam: NBS LAYLA XG
ALI COW

When the first calf of this mating hit the ground, we were excited! On day two, she struck a pose in the calving pen and we snapped a pic that lit up Facebook for Little Cedar's semen sale in OKC for Direct Deposit - Show Bull of the Year! So far, we've had two heifers of this mating and we are not ready to part with them yet. Take our word for it, you won't be disappointed.



AI SIRE FOR LOT 824B



2-DAY OLD DIRECT DEPOSIT CALF

Lot 824C

NARROW BROOK FARMS

NBS LAYLA XG

REG: AR4351226 | 1/2 SIMMENTAL | EMBRYOS X 3 RS FEMALE

W/C RELENTLESS 32C

Sire: JSUL SOMETHING ABOUT MARY 8421

JBSF PROUD MARY

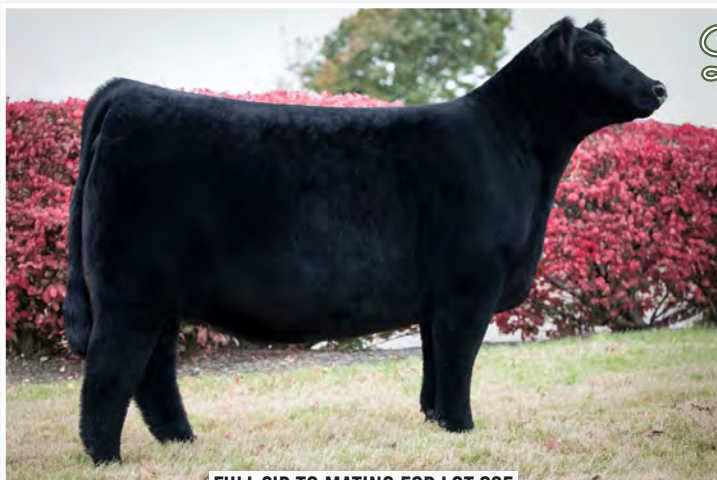
PET NBS FLYBOY 747 ET

Dam: NBS LAYLA XG
ALI COW

Full sibs to the 2025 Supreme Female at the Michigan State Fair!



AI SIRE FOR LOT 824C



FULL SIB TO MATING FOR LOT 825

Lot 825

DYKSTRA LIVESTOCK

JSUL WHO DAT DIXIE

REG: P380052 | 6.65% CHI | EMBRYOS X 3 SEXED FEMALE

DAMERON FIRST CLASS

Sire: COLBURN PRIMO 5153

SILVEIRAS SARAS DREAM 1339

ASHW WHO DA MAN

Dam: JSUL WHO DAT DIXIE
JSUL SULTRY 6640

Offering three sexed heifer IVF embryos from the dominant WDM/6640 cow family. The WDM/6640 cows have consistently proven themselves at the highest level, known for their power, femininity, structure, and ability to rise to the top generation after generation. The photo attached is a full sibling to these eggs, providing a strong preview of the quality and consistency this mating produces. A proven cow family paired with a proven sire, these embryos are designed to make elite females and future donors.



Image inverted



AI SIRE FOR LOT 826

Lot 826

KASTEL SHOW CATTLE

ELECTRA

REG: COMMERCIAL | CROSSBRED | EMBRYOS X 3

Sire: MAN AMONG BOYS
FSF KING OF MEN ET
FSF VALLEY ROSE PJET 117 ET

Dam: BOJO
ELECTRA
WITCH DOCTOR

Full sib to standout Cherry Chip from our fall sale that sold to Nebraska. Her dam, Electra was lot 1 in Martins Share the Brand Sale. Full sib to our up and coming promo bull, Wild Thing, to be introduced later this winter.

Image inverted



AI SIRE FOR LOT 827A



AI SIRE FOR LOT 827B

Lot 827A

HIDDEN DRIVE CATTLE CO.

SULL RIGHT TAMALES 3172

REG: 4410967 | 1/2 SIMMENTAL | EMBRYOS X 3

Sire: SVF STEEL FORCE
MR HOC BROKER
JM BF H25
SULL RIGHT DIRECTION
Dam: SULL RIGHT TAMALES 3172
SUL TAMALES

Lot 827B

HIDDEN DRIVE CATTLE CO.

SULL RIGHT TAMALES 3172

REG: 4410967 | SHORTHORN PLUS | EMBRYOS X 3

Sire: FSF NEAR PERFECT
FSF PERFECTION 812
FSF SIERRA CRYSTAL
SULL RIGHT DIRECTION
Dam: SULL RIGHT TAMALES 3172
SUL TAMALES

PICK YOUR CHOICE MATING!

Choice lot of embryos from the RED full sib to the great Tammy donor of Boyerts. Daughters from these matings have been exactly what you would expect from each sire. The cow power is there, pick the sire for the direction you want and reap the benefits. **BROKERS OR PERFECTIONS.**
UNSEXED IVF EMBRYOS



CED	BW	WW	YW	MILK	REA	MARB	API	TI
4	4.2	76.8	107.9	17.1	.73	-.26	80.1	63.3

Lot 828

FILHART FAMILY FARM

MR HOC BROKER

REG: 2531081 | PUREBRED SIMMENTAL | SEMEN X 2 UNITS

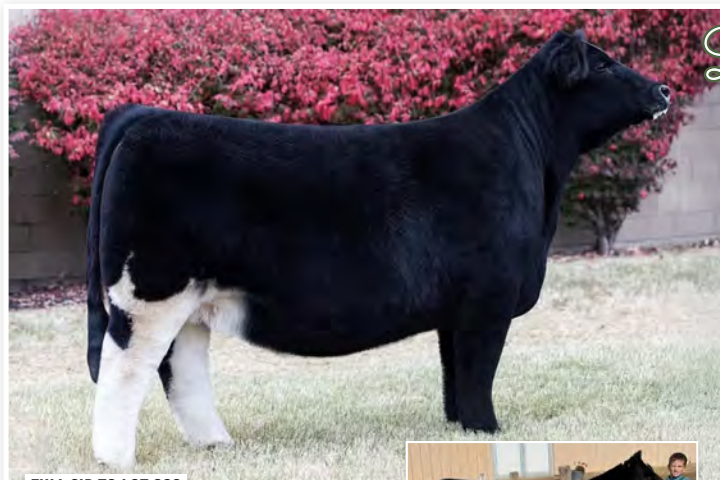
CNS DREAM ON L186

Sire: SVF STEEL FORCE S701
SVF SHEZA BEAUTY L901

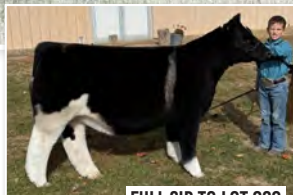
G6L BLACKFOOT 716D

Dam: JM BF H25
YC MISS BIK B80

MR HOC Broker is one of the greatest modern-day champions and has become one of the most decorated breeding bulls for phenotype, production characteristics, and marketability. Broker is undoubtedly the most dominant sire that the Simmental breed has EVER seen when it comes to generating elite show heifers that have been crowned champion at every level of competition repetitively. As a Triple Crown Champion himself, he sires cattle that will take you to the backdrop or top your next production sale. MR HOC Broker is now deceased and there is a VERY limited amount of semen is left in the tank!



FULL SIB TO LOT 829



FULL SIB TO LOT 829

Lot 829

KAVANAGH CATTLE COMPANY

KYRA

REG: 511053 | 1/2 MAINTAINER | EMBRYOS X 3

MONOPOLY

Sire: MAN AMONGST BOYS
HARD CORE X WHO MADE WHO
DRIVEN 80

Dam: KYRA
KMA 6019

"Kyra" has done an incredible job for us the last few years and we finally decided to flush her and offer a few embryo packages out of her. Her last 3 calves have averaged \$9,500 and have been extremely successful for the Wood family in southern Ohio and the Lang family in southern Indiana with their MAB heifer they are campaigning this year. No guessing here the hard work is already done!

Lot 830

DYKSTRA LIVESTOCK

208M

REG: COMMERCIAL | CROSSBRED | EMBRYOS X 3

BUSINESS DONE RIGHT

Sire: KING OF KINGS
IN GOD WE TRUST/HL 1419

MONOPOLY

Dam: 208M
HUSTON 208

Offered are 3 unsexed IVF embryos from the proven 208M donor. This cow has firmly established herself as an elite producer, highlighted by raising the Champion Middle Weight Shorthorn Steer at the 2023 Fort Worth Stock Show and the Champion Shorthorn Plus Steer at the King of the Ridge show last year. Demand for this mating speaks for itself; a full sibling to these embryos was sold for \$25,000 this past sale season, confirming both the quality and market value behind this genetic combination. Proven champions, proven dollars, and a mating that continues to deliver at the highest level.



How 100% beef stacks up.



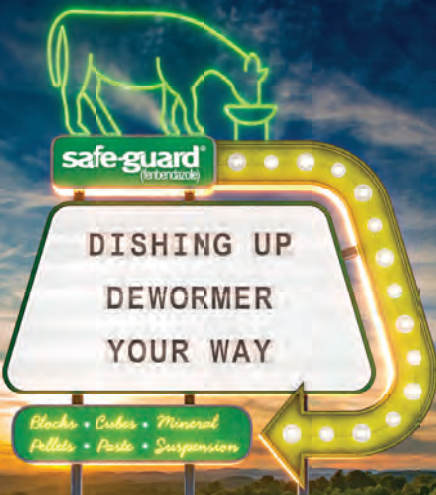
The McDonald's System spent an estimated nearly **\$470 million on suppliers** in the Michigan supply chain.* In 2023, the McDonald's System purchased more than **\$285 million** of quality ingredients in Michigan, including more than 917 thousand pounds of beef.



Follow us on Social



@McDonaldsOfMichigan



DEWORMING IS OUR SPECIALTY

Powered by fenbendazole, SAFE-GUARD® goes to the gut and kills parasites, even when ingested in small amounts. From blocks to pellets to cubes, feed formulations offer an easy, hands-free option for summer and fall deworming. Break parasite life cycles and prevent shedding back onto the pasture with SAFE-GUARD.

Protect your herd against profit-eating parasites. Add the SAFE-GUARD Program to your parasite management protocol.

See the full menu at Safe-Guard.com.

safe-guard®
(fenbendazole)

MAHCattle.com • 800-521-5767
© 2025 Merck & Co., Inc., Rahway, NJ, USA and its affiliates. All rights reserved. US-SFG-241100002

Nevill Supply, Inc

8405 S Eberhart Ave Clare, MI 48617

989-386-4522 nevillsupply@gmail.com



Fencing Specialist!

We have post and wire
IN-STOCK,
Give us a call.

bridon
USA



 **BEKAERT**

better together.



Behlen®
COUNTRY
Farm & Ranch Equipment

ANGUS *Michigan*

SALE MANAGER:

Brandon Goering
(419) 551-5461

www.michiganangus.org

BATES FAMILY LIVESTOCK LOT 107

Dan & Dalaney Bates
4130 Volz Rd.
Sebewaing, MI 48759
(989) 225-0200

BURNELL FARMS LOT 112

Pat, Melinda & Brady Burnell
13822 26th St.
Gobles, MI 49055
(269) 207-3912

FOUR M FARM LOT 104

Kylee & Cassie Mumford
4849 Otter Lake Rd.
Otter Lake, MI 48464
(810) 288-2490

BREED REPRESENTATIVE:

Lisa Lutchka
(517) 262-5885

IRA ACRES LOT 111

Jeff & Rick Ruemenapp
8230 Broadbridge Rd.
Fair Haven, MI 48023
(586) 909-0825

LUTCKA ANGUS LOTS 102, 103, 106, 108, 109 & 110

David, Joan & Lisa Lutchka
1439 S Francisco Rd.
Grass Lake, MI 49240
(517) 262-5885

MCKAY FARMS LOT 114

Morgan & Gordon McKay
11149 S. Vassar Rd.
Holly, MI 48442
(810) 875-6722

SELDOM REST FARMS LOTS 101, 105 & 113

Andrew Foster
11893 M-140
Niles, MI 49120
(269) 208-1445

THE

BUSINESS

BREED

EXPLORE EXCEPTIONAL OFFERINGS FROM OUR ESTEEMED
BREEDERS AT THE 2026 MICHIGAN BEEF EXPO!

**BATES FAMILY LIVESTOCK
BURNELL FARMS
FOUR M FARM
IRA ACRES
LUTCKA ANGUS
MCKAY FARMS
SELDOM REST FARMS**

DISCOVER PREMIUM ANGUS GENETICS FROM THESE TRUSTED
MEMBERS OF THE MICHIGAN ANGUS ASSOCIATION!



GET IN TOUCH BY
SCANNING THE QR CODE!

JOIN THE MICHIGAN ANGUS ASSOCIATION TODAY!

FOR THE LATEST NEWS, UPDATES AND CURRENT SCHEDULE OF EVENTS VISIT OUR WEBSITE AT WWW.MICHIGANANGUS.ORG



www.michiganangus.org



SIRE TO LOT 101

CED	BW	WW	YW	MILK	REA	MARB	\$B	\$C
4	1.6	72	125	30	0.61	1.07	189	330

Lot 101

SELDOM REST FARMS

SELDOM REST CRAFTSMAN 71N

REG: 21360005 | TATTOO: 71N | DOB: 04/09/25 | ANGUS | BULL

SITZ RESILIENT 1020B

Sire: CONNEALY CRAFTSMAN
BLACK KATHY OF CONANGA 8521

MILL BRAE IDENTIFIED 4031

Dam: R EDGE MISS 1814
R EDGE MISS H036

An outstanding herdsire prospect with exceptional phenotype and a balanced genetic profile charting a 332 \$C and ranks in the top 25% for all dollar indexes. This big topped sound footed son of the popular ST Sire, Connealy Craftsman has an incredibly balanced look and the generating potential to have a lasting impact in a variety of breeding scenarios. Simply put, he is good cattle! Be sure to check him out.



SIRE TO LOT 102

CED	BW	WW	YW	MILK	REA	MARB	\$B	\$C
8	-0.4	71	131	31	0.87	0.73	183	308

Lot 102

LUTCHKA ANGUS

LA SALUDA VICTOR EG 325

REG: 21372386 | TATTOO: 325 | DOB: 02/27/25 | ANGUS | BULL

SITZ STELLAR 726D

Sire: YON SALUDA
TON SARAH A615

SCHIEFELBEIN ENDGAME 99

Dam: LA ENDGAME VICKY 322
LA EASY MONEY VICKY 1920

Victor 325 is a doll! He combines a good balance of EPDs with flash, flair, and jet black hair. He has great depth of body, rib shape, and a square hip, and walks with reach and purpose. His actual 78 lb birth weight and -.4 BW EPD will make him a great prospect for covering heifers. Victor was very easy to break and is a friendly bull that would be excellent in either a small or large herd.



CED	BW	WW	YW	MILK	REA	MARB	\$B	\$C
13	-1.9	55	95	24	1.05	1.05	157	275

Lot 103

LUTCHKA ANGUS

LA ROUGH COUNTRY

REG: 21253743 | TATTOO: 125 | DOB: 01/03/25 | ANGUS | BULL

MILLBRAE IDENTIFY 4031

Sire: HCC WHITEWATER 9010
ROCK CREEK SARA 6066

SILVEIRAS STYLE 9303

Dam: LA DIANA STYLE 120
LA DIANA TOUR 117

LA Rough Country has a great look to go along with a super thick top and loads of rib shape. With a BW EPD of -1.9 (top 4%), an CED of +13 (top 10%), and an actual birth weight of 60 lbs, he is an excellent prospect as a calving-ease sire. Additionally he had a no-creep weaning weight of 814 lbs. From the start he has been tame, was easy to break, and remains easy to handle. He should work well in a large or small herd.


Lot 104

FOUR M FARM

FOUR M SUPERMAN

 REG: 21009299 | TATTOO: M01 | DOB: 04/01/24 | ANGUS | **BULL**

NORTHERN IMPROVEMENT 4480 GF

Sire: WWSC SLIDER

JTM EDITION'S QUEEN 107

SCC SCH 24 KARAT 838

Dam: PLUM CREEK FOREVER LADY 2519

PLUM CREEK FOREVER LADY 5242C

Superman was bred to be a low birth weight, calving ease bull. He brings a stacked pedigree to the table and is a complete package with sound structure, eye appeal, and extra body shape.


Lot 105

SELDOM REST FARMS

SELDOM REST DIVA BARDOT 88N

 REG: 21356956 | TATTOO: 88N | DOB: 05/10/25 | ANGUS | **OPEN HEIFER**

PVF INSIGHT 0129

Sire: BNZW PAISLEY 2143

CCC SARAH'S DREAM 5116

SILVERAS S SIS GQ 2353

Dam: SELDOM REST BARDOT 1030

SELDOM REST BARDOT 890

A fancy May show heifer prospect with the look that will turn some heads. Exceptional extension and angularity contribute to her striking look. From a structural standpoint 88N gets out and covers ground with ease. A full sister in blood to the popular 2024 Seldom Rest sale feature, and Grand Champion of the 2025 National Western Junior Angus Show, Seldom Rest Diva Bardot 4048.

FULL SIB TO LOT 102

CED	BW	WW	YW	MILK	REA	MARB	\$B	\$C
2	3.3	54	85	19	0.42	0.009	102	162


Lot 106

LUTCHKA ANGUS

LA LADY ATLANTIS 825

 REG: 21454272 | TATTOO: 825 | DOB: 05/08/25 | ANGUS | **OPEN HEIFER**

SQUARE B ATLANTIS 8060

Sire: JLF ATLANTIS 3112

JLF VIXON 9236

PVF INSIGHT 0129

Dam: LA LADY CHASER 121

LA LADY CHASER 3018

LA Lady Atlantis is a great show heifer prospect. She is jet black, and flashy with excellent rib shape and depth. Her mother, by PVF Insight 0129 has tremendous body and eye-appeal.

CED	BW	WW	YW	MILK	REA	MARB	\$B	\$C
-5	4.6	77	124	29	1.11	0.03	137	234



Lot 107

BATES FAMILY LIVESTOCK

BATES' PHYLLIS' NINA 506N

REG: 21369490 | TATTOO: 506N | DOB: 04/02/25 | ANGUS | **OPEN HEIFER**

PVF INSIGHT 0129

Sire: PVF BLACKLIST 7077

PVF BLACKBIRD 3070

SCC SCH 24 KARAT 838

Dam: SCC SLL PHYLLIS 3445

SCC SCH PHYLISS 919

Nina is the 1st calf out of Phylliss 3445 that we purchased from the Stertzbach Family which was a maternal sister to the 2024 Denver Jr Show Res. Champion Female. Nina is stylish, well-balanced heifer that is feminine and angular.



Lot 108

LUTCHKA ANGUS

LA DYNAMIC MACY RC 1225

REG: 21372387 | TATTOO: 1225 | DOB: 03/18/25 | ANGUS | **OPEN HEIFER**

DEER VALLEY GROWTH FUND

Sire: B A R DYNAMIC

B A R BLACKCAP 7235-80048

LA BRILLIANT BARD 1119

Dam: LA BARD'S RIGHT DIANA 3821

LA RIGHT DIANA 715

We love this heifer! Dynamic Macy (we call her Jerilyn) is Beast Mode in female form. Great rib shape and depth, as well as a wide top and big hip make this girl stout. She is built well from the ground up with good foot size, hoof angle, and bone. The females in this family are great producers and we expect her to follow them. We are letting her go because her mom is young and grandma had another heifer this year. She will be a nice addition to any size herd and will definitely look impressive in your pasture. Actual birth weight 82 pounds.

SIRE TO LOT 108

CED	BW	WW	YW	MILK	REA	MARB	\$B	\$C
0	1.1	85	146	16	1.06	.90	172	264



Lot 109

LUTCHKA ANGUS

LA GROWTHFUND DIANA WU 1025

REG: 21374141 | TATTOO: 1025 | DOB: 03/14/25 | ANGUS | **OPEN HEIFER**

BASIN PAYWEIGHT 1682

Sire: DEER VALLEY GROWTHFUND

DEER VALLEY RITA 36113

J&J WEIGH UP 294

Dam: LA WEIGHT UP DIANA 1220

LA DIANA GRANITE 615

Diana 1025 is a flashy package with a nice balance of EPDs. Top 10% CED. Top 20% BW WW YW. Her mother is a big-bodied, stunning cow that milks well, with a Teat Score in the top 30% and a Udder Score in the top 35% of the breed. Diana would work well in a large, low management herd. Actual Birth Weight 64 lbs.

SIRE TO LOT 109

CED	BW	WW	YW	MILK	REA	MARB	\$B	\$C
12	-0.3	80	140	23	0.31	0.055	130	231



SIRE TO LOT 110

CED	BW	WW	YW	MILK	REA	MARB	\$B	\$C
11	-0.4	53	91	31	0.44	1.00	153	267

Lot 110

LUTCHKA ANGUS

LA SALUDA LAYLA RCHD 925

REG: 21374140 | TATTOO: 925 | DOB: 03/12/25 | ANGUS | OPEN HEIFER

SITZ STELLAR 726D

Sire: YON SALUDA

YON SARAH D668

LA RIGHT CROSS HD 1217

Dam: LA MISS LAYLA RCHD 2720

LA COAL BANK JESSIE 1113

Layla 925 has been a favorite from the start! She is moderate, deep bodied, and presents a lovely, up-headed profile. She is a dark, glossy black to the skin. Layla is calm girl that was easy to break and is easy to work with. She fits in well in either a high or low management setting. She comes from a line of low birthweight females with excellent longevity and maternal power with a BW of -.4 and a CED of +11. Her EPDs for Milk +31, Teat Score (top 2%) and Udder Score (top 3%) support this. Actual Birth Weight 78 lbs.



CED	BW	WW	YW	MILK	REA	MARB	\$B	\$C
9	0.1	64	113	29	0.59	0.025	141	253

Lot 111

IRA ACRES

JWR CHARLENE

REG: 21284573 | TATTOO: 501 | DOB: 01/06/25 | ANGUS | OPEN HEIFER

EXAR STOCK FUND 9097B

Sire: EXAR STOCK FUND 2502

VINTAGE RITA 8455

RPS BISMARCK 201

Dam: JWR MISSY

BCCC MS FUTURE R506

We are excited to be consigning JWR Charlene. She is a big bodied heifer with just the right touch of femininity. Has all the right pieces to be a great addition to any herd. First year showman broke.



CED	BW	WW	YW	MILK	REA	MARB	\$B	\$C
-3	5	64	103	10	0.56	0.01	101	144

Lot 112

BURNELL FARMS

BPB STUNNING LADY 03N

REG: 21394510 | TATTOO: 03N | DOB: 01/04/25 | ANGUS | OPEN HEIFER

SSF ON POINT 4028

Sire: ROSE MC ENCORE 0463

BURNS ELBA 1454

PVF BLACKLIST 7077

Dam: BJSC STUNNING LADY 104

AGLE STYLISH LADY A6

This one comes from a proven family. Her maternal brother was the MI Beef Expo 2025 Supreme Bull, and her maternal sister was the 2024 Champion Angus female. BPB Stunning Lady 03N is a sharp, eye-appealing heifer with impressive rib shape, dimension, hair and structural soundness-paired with an easygoing disposition. Don't miss your chance to bring this standout female into your program.



MATERNAL SIB TO LOT 112



Lot 113

SELDOM REST FARMS

SELDOM REST BARDOT 4203

REG: 21230942 | TATTOO: 4203 | DOB: 10/03/24 | ANGUS | **BRED HEIFER**

PVF INSIGHT 0129

Sire: BNZW PAISLEY 2143

CCC SARAH'S DREAM 5116

EXAR CLASSEN 1422B

Dam: SELDOM REST BRMF BARDOT 890

DAMERON BARDOT 689

An outstanding senior heifer with tremendous quality and brood cow potential. Stemming from one of the most proven and consistent cow families in the Seldom Rest program, 4203 is a direct daughter of Seldom Rest BRMF Bardot 890. The 2015 North American ROV Angus Show Reserve Grand Champion, who has blazed her own path in the donor pen, producing several sale features and national champions that are maternal sibs to this heifer.

DAM TO LOT 113

AI DATE: 12/8/25 | SIRE: BOYD CONCRETE 3425 | REG: 20829739

CED	BW	WW	YW	MILK	REA	MARB	\$B	\$C
3	3.8	65	106	20	0.57	-0.002	143	225



Lot 114

MCKAY FARMS

SMCK SANDY'S FEATHER NL

REG: 21046435 | TATTOO: M414 | DOB: 05/16/24 | ANGUS | **BRED HEIFER**

EXAR BLUE CHIP 1877B

Sire: CONLEY NO LIMIT

SILVEIRAS S SIS SANDY 2355

SCC SCH 24 KARAT 838

Dam: SELDOM REST SANDY 1055

SILVEIRAS S SIS SANDY 2354

We dug into our replacement pen and pulled out a treat for you all. This heifer has a big time pedigree with the phenotype to match, just be the last to bid, take her home and calve her out. The hard work is done here! Added bonus, she's an absolute sweetheart of a cow.

AI DATE: 6/19/25 | SIRE: GCC GOLD STANDARD X615 | REG: 17001727 | DUE DATE: 3/29/26

CED	BW	WW	YW	MILK	REA	MARB	\$B	\$C
3	3.8	65	106	20	0.57	-0.002	143	225

MARK YOUR
calendars!

JOIN US FOR THE 2027 MICHIGAN BEEF EXPO

FEBRUARY 19 - 21, 2027

BASES ARE LOADED

for Angus Junior Nationals!

HELP OUR JUNIORS GO TO NATIONALS!



LOT 1A, 1B & 1C

OFFERING 3 OPPORTUNITIES TO ADVERTISE YOUR BUSINESS OR FARM. YOUR SPONSORSHIP WILL BE WORN AT THE STATE PREVIEW SHOW AND THE NATIONAL JUNIOR ANGUS SHOW

LOT 2

3X5 AMERICAN ANGUS FLAG
DONATED BY: KIRK STERZICK

**LIVE AUCTION TAKES PLACE AT THE END OF THE
FRIDAY NIGHT LIGHTS SALE ON FEBRUARY 20TH.**

ONLINE BIDDING IS AVAILABLE AT CCI.LIVE || SHIPPING IS AVAILABLE AT THE BUYERS EXPENSE.

FOR MORE INFORMATION OR QUESTIONS ABOUT THE MJAA AUCTION, CONTACT ONE OF OUR ADVISORS OR JUNIOR BOARD MEMBERS!

LORI PILLARS: 818-882-4819 || KELLY DARGUS: 289-208-3814 || KADEN BUHER: 517-525-9725

FUNDRAISER AD WAS DONATED BY CLAY KNOLL ANGUS/PILLAR FAMILY

PREMIUM LIVESTOCK EQUIPMENT BUILT FOR STRENGTH, SAFETY, AND EFFICIENCY



Explore our full range of equipment for
cattle, horses, sheep, dogs, and more.



(517) 449-6393

(517) 449-7829

Brazzen.andy@gmail.com

Brazzen.becky@gmail.com



View Our
Website



Follow us on
Facebook



JOIN MCA
THE **VOICE OF** MICHIGAN
CATTLE PRODUCERS

The Michigan Cattlemen's Association is the trusted leader of the Michigan beef industry and gives a voice to our state's cattle producers on a local, regional, and national level. MCA is focused on addressing issues that impact the long-term viability of cattlemen in our state. When it comes to the legislation impacting Michigan cattlemen and women, you can count on MCA to have your back.

The Michigan Cattlemen's Association works closely with industry partners to maintain a positive business environment for cattle producers through leadership and education.

BECOME A MEMBER TO ENSURE A VIABLE MICHIGAN CATTLE INDUSTRY NOW AND FOR OUR FUTURE.

GET INVOLVED

- ▶ MCA Events
 - » MCA Annual Meeting
 - » MCA Summer Round-Up
- ▶ Market Cattle
 - » Michigan Beef Expo
 - » MCA/MSU Bull Evaluation
- ▶ MCA's Young Cattlemen's Events
- ▶ National Involvement Opportunities through the National Cattlemen's Beef Association

HOW MCA SERVES YOU:

- ▶ Policy efforts throughout the state to stay on top of any regulatory issues that could negatively affect your operation
- ▶ Sponsorship of educational programs
- ▶ Quarterly Michigan Cattleman Publications
- ▶ Monthly Email updates with Industry and Association News

Scan QR Code and join Online!



SALE MANAGER:
Brandon Goering
(419) 551-5461

BREED REPRESENTATIVE:
Kristina VanOrder
(616) 886-7087

Lorren VanOrder
(616) 886-6040

ALBRECHT LIVESTOCK
Hayley & Claudia Albrecht
5287 Rossman Rd.
Kingston, MI 48741
(810) 355-5254

BURNELL FARMS
Melinda, Pat & Brandy Burnell
13822 26th St.
Gobles, MI 49055
(269) 207-3912

CHERITHBROOK FARM
Matt & Tara Reeder
3011 Meridian Rd.
Okemos, MI 48864
(517) 204-5615

CT FARMS
Craig & Trisha Ulsh
10939 Flowerfield Rd.
Marcellus, MI 49067
(269) 625-1126

DYKSTRA LIVESTOCK
Morgan Dykstra
3649 16th St.
Wayland, MI 49348
(269) 397-0454

FARM44
Anya Butler
46338 44th Ave.
Lawrence, MI 49064
(269) 998-9123

FITZNER FARMS & SCALES FARMS
Steve Fitzner & David Scales
6653 Sherwood Hwy
Bellevue, MI 49021
(616) 340-7171

HR CATTLE
Roger Hunker
6014 ST RT 113
Bellevue, OH 44811
(419) 217-2828

KASTEL SHOW CATTLE
Josh Kastel
13591 Packard Rd
Hudson MI 49247
(419) 344-3476

KVO CHIANGUS
Kristina & Lorren VanOrder
3095 53rd St.
Hamilton, MI 49419
(616) 886-7087

M3 LIVESTOCK
Sawyer Maurer
1340 110th Ave.
Otsego, MI 49078
(269) 720-6613

MEERT CATTLE
Brennen Meert
833 106th Ave.
Plainwell, MI 49080
(269) 217-7138

SEAMAN MAYER SHOWSTOCK
Justin Seaman & Haylie Mayer
9760 W Washington Rd.
Sumner, MI 48889
(989) 763-8901

SIMS CATTLE COMPANY
Connor McArthur & Todd Sims
5567 Irvin Shoots Rd. W.
Marion, OH 43302
(517) 398-7200

T&C SHOW CATTLE
Tim Hildebrand
1558 S Main
Martin, MI 49070
(269) 760-0124

TL LIVESTOCK
Tyler Labadie & Garrett Thompson
8273 N Ionia Rd.
Vermontville, MI 49096
(906) 235-2720



SIRE TO LOT 201

Lot 201

KVO CHIANGUS

KVO LAST CHANCE 314N

REG: 430761 | TATTOO: 314N | DOB: 03/14/25 | 9.99% CHI | BULL | HORNED

Sire: SGW CARD PATRIOT 236
OHL LAST STAND 3215L
OHL BLABBER MOUTH 3215A
OHL GOOSE CHASE 1190A
Dam: KVO BRIN
KVO RUBY

If you're looking for a bull that is really sound made, soggy bellied and long necked he will be one to look up at Expo. He is out of our new herd bull we purchased from the Ohlrich of Norfolk, NE. This bull is good natured and has always been easy to handle. He maybe a little younger at the time of Expo but by breeding time he will be ready to go to work.

CED	BW	WW	YW	MILK	REA	MARB
8	2	49	72	16	0.14	-0.07



Lot 202

FARM 44

AMB FANCY'S KINGSTON

REG: 430924 | TATTOO: ABUTN2 | DOB: 02/04/25 | 6.9% CHI | **BULL**

DUEL ICON 802F

Sire: FIRES HOCUS POCUS 16K ET
RATLIFFS FLIRT 892F ET

FU MAN CHU

Dam: HOCK FANCY
FOX B VENUS 1P

This one has been a standout since weaning, so we decided to give him the time he deserved. We're glad we kept him a bull - because he has stepped forward every single day since. Big-bodied, easy-feeding, and good-minded, he brings muscle, power, and eye appeal together in one high-quality package. Packed with potential and designed for what's ahead, this is the kind of bull that can take you to the next level.

CED	BW	WW	YW	MILK	REA	MARB
6	2.9	46	69	18	0.62	0.18



Lot 203

HR CATTLE

HR 800 609N ET

REG: 430549 | TATTOO: 609 | DOB: 06/09/25 | 7.82% CHI | **OPEN HEIFER**

WEIS ALL ME 10F

Sire: JBOY ONE FOR ALL 001J ET
MISS HIDDEN GEM 899F ET

NMR MATERNAL MADE

Dam: BMW ACE 2 417J ET
ROCKN ACE 2 413B

Flush sister to our other lot, just a bit stouter version. Build and body still carry's through into an extremely maternal design! We couldn't decide on a favorite so we decided to let you choose! Great candidates to take through the summer shows and transition straight into your cow herd.

Image inverted

CED	BW	WW	YW	MILK	REA	MARB
8	2.8	48	74	16	0.64	0.07



Lot 204

HR CATTLE

HR 800 601N ET

REG: 430548 | TATTOO: 601N | DOB: 06/01/25 | 7.82% CHI | **OPEN HEIFER**

WEIS ALL ME 10F

Sire: JBOY ONE FOR ALL 001J ET
MISS HIDDEN GEM 899F ET

NMR MATERNAL MADE

Dam: BMW ACE 2 417J ET
ROCKN ACE 2 413B

Just a June baby here with tons of potential! Long, balanced, and good built- you can't ask for much more. She's the kind that keeps getting better with time. This heifer's got a pedigree that stacks up for breeding, and she'll be one you're proud to show through the summer circuit as she matures.

CED	BW	WW	YW	MILK	REA	MARB
8	2.8	48	74	16	0.64	0.07


Lot 205

MEERT CATTLE/M3 LIVESTOCK

BTM WHOS HERE 502N

 REG: 430947 | TATTOO: 502N | DOB: 04/23/25 | 2.71% CHI | **OPEN HEIFER**

WALKS ALONE

Sire: **HERE I AM**
GORS 805
Dam: **SELDOM REST 1240J**

This calf has a bright future ahead of her. If you are looking to make high quality show cattle with some feet and bone or if your looking for a cow with some substance and shag to her, this is your female.

CED	BW	WW	YW	MILK	REA	MARB
8	1.2	48	69	12	0.25	0.57


Lot 206

KVO CHIANGUS

KVO MIRANDA 210N

 REG: 430762 | TATTOO: 210N | DOB: 02/10/25 | 8.18% CHI | **OPEN HEIFER**

SGW CARD PATRIOT 23G

Sire: **OHL LAST STAND 3215L**
OHL BLABBER MOUTH 3215A
OHL GOOSE CHASE 1190A
Dam: **KVO PENNY 64J**
KVO CRYSTAL

This female is a female that has been a favorite of ours from day one and originally was not going to be leaving our place, but when numbers for Expo are needed, we decided to let a good one go with hopes we can make a full sib as good as this heifer in the future. This female is big bodied, big topped, square hipped, cool fronted and sound structure. Make her a show heifer or a brood cow she will do both, she is made to make some really nice club calves and has the blood lines to make some really good replacement females. Her mother is a favorite of ours. She could potentially produce some color with her mother being red. Come look this female up because I think you will like her!

SIRE TO LOT 206

CED	BW	WW	YW	MILK	REA	MARB
9	1.7	48	72	15	0.71	0.15


Lot 207

TL LIVESTOCK

DSSF SUNSHINE

 REG: 430696 | TATTOO: 7N | DOB: 01/24/25 | 9.88% CHI | **OPEN HEIFER**

GETCHA SOME ET

Sire: **SRR MEMBERS ONLY ET**
HIDE N WATCH 1CM
NMR MATENAL MADE
Dam: **BMW DS SUNFLOWER 403H**
HEIN MS SUNFLOWER 414C

Presence. Performance. Power. "Carrie" offers tremendous length of body, stout features, with added performance on a sound skeleton. Her flash and function give her an undeniable presence that is coupled with an exotic front 1/3 that catches everyone's eyes. She is backed by the Sunflower cow of Winegardner/Klingamen Show Cattle that needs no introduction. Finding a clubbier bred female that doesn't have Here I Am these days is tough, but here she is. Whether you are looking to add a female who can compete in the show ring or be a part of your donor battery, look into this female as she is sure to be an essential foundation to any operation.

CED	BW	WW	YW	MILK	REA	MARB
9	2	41	63	14	0.56	0.2



Lot 208

DYKSTRA LIVESTOCK

WHO DAT ALPHA ET

REG: 427444 | TATTOO: 119 | DOB: 01/19/25 | 6.54% CHI | **OPEN HEIFER**

DAMERON FIRST CLASS

Sire: COLLISON ALPHA 028

CS GEORGINA 919

ASHW WHO DA MAN

Dam: JSUL WHO DAT DIXIE

JSUL SULTRY 6640

Alpha WDM/6640 is a no-guesswork mating backed by one of the most dominant cow families in the business. The WDM/6640 cow line has produced multiple champions and high-placing cattle at major shows, earning a reputation for power, eye appeal, and structural integrity. Alpha adds muscle and balance to complement her femininity and depth, resulting in progeny built to win early and mature into productive, long-lasting cows. The heifer herself is long fronted and extremely broody in her design, offering the look and maternal presence that judges and cattlemen value. She is also free of genetic defect by pedigree.

CED	BW	WW	YW	MILK	REA	MARB
8	2.5	60	92	17	0.44	0.38



Lot 301

KASTEL SHOW CATTLE

JFK SMOOTH OPERATOR

REG: P570687 | TATTOO: N7 | DOB: 04/25/25 | MAINETAINER | **BULL**

COWAN'S ALI 4M

Sire: 180

BPF MILEY 80T

Dam: JEWELS GOLD STANDARD

JFK MATENAL GEM

Backed by some of the best pedigrees in the business. When he hit the ground I knew he would make the perfect calving ease sire, weighing in at 68 lbs at birth. Smooth made, perfect headed leading into a perfect shoulder. Just enough power to make outstanding females and steers. Retaining 1/2 semen interest only (not possession).

GRANDDAM TO LOT 301



Lot 302

ALBRECHT LIVESTOCK

ALB CODE OF SILENCE 2N

REG: P570309 | TATTOO: 2N | DOB: 02/20/25 | MAINETAINER | **BULL** | SCURRED

GOET 180

Sire: BBR MAFIA M.A.X 667K ET

GEF MISS DOMINATRIX 236A

HERE I AM

Dam: ALB MAGGIE'S BLACKBERRY JAM 4E

ALB MAGGIE'S JAM

A unique bull that we feel would be an incredible entry for the 2026 Michigan Beef Expo. A bull that is rugged in his build and unique in his design. He grabs the ground with authority and is functional within his hip and hind leg structure. When asked to take the lead he does so with comfort and ease. He is right for the times within his center body while maintaining shape and

muscle design throughout. He derives from a cow family that consistently produces offspring that are easy fleshing, possess great maternal instincts, and milk especially well. ALB Code Of Silence 2N is a bull that we feel would be a bull to build a cow herd around. He is very docile! ***SPECIAL TERMS AND CONDITIONS: Albrecht Livestock reserves the right to (TWO) successful semen collections at our expense and buyers convenience prior to 2030.***


Lot 303

MEERT CATTLE

BTM LIL GEM 508N ET

 REG: 568512 | TATTOO: BTM 508N | DOB: 05/31/25 | MAINE ANGUS | **OPEN HEIFER**
DAMERON FIRST CLASS
Sire: **COLBURN PRIMO 5153**
SILVEIRAS SARAS DREAM 1339
Dam: **BNWZ DATA BANK 1311C ET**
BBR GEMMA 436 ET
GEF MISS DOMINATRIX 236A

High quality Maine-Angus show heifer that was already shown and Reserve Maine-Angus at Michigan Winter Classic. Her mother Gemma, a many time champion and our best donor cow doesn't miss. A full sib to this heifer was successfully campaigned by the Maurer family last year and found herself at the backdrop many times receiving Grand and Reserve Maine-Angus honors. I could keep rambling on but I think this one speaks for herself. Great genetics, ready to show, let her win you some banners, then kick her to the donor pen and make you money!


Lot 304

T&C SHOW CATTLE

SANDRA

 REG: 566677 | TATTOO: HILD N517 | DOB: 05/17/25 | HIGH MAINE | **OPEN HEIFER**
BK UNLIMITED POWER
Sire: **LDSC UNLEASHED ET**
DADDYS MONEY 55Z
MISS WHISKEY DREAMS
Dam: **TJSC XIDEE ET**
BK XIDEE 069

This young lady will catch your eye! Her long neck and big-boned structure gives the look of a fresh, correct female. This, along with her pedigree will give tremendous returns for any operation she will work in.



Image inverted

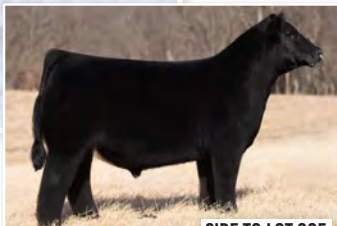
Lot 305

BURNELL FARMS

BPB DEMI 07N

 REG: 570273 | TATTOO: 07N | DOB: 04/29/25 | MAINETAINER | **OPEN HEIFER** | **HORNED**
WEIS ALL ME 10F
Sire: **JBOY ONE FOR ALL 001J ET**
MISS HIDDEN GEM 899F ET
Dam: **DBV SIMPLE MAN 981W**
ALB HAYA DRAMAS DEMI 2J
JWC DRAMA QUEEN

This late-April heifer is an ideal choice for anyone looking to add top-quality replacement females to their herd. She exhibits femininity through her front third, maintains correct angles and lines, and boasts a sound skeletal structure. Her soft, durable feet complement her impressive power and presence. Sired by JBOY One for All - the popular PB Maine bull from Boyert's whose daughters have consistently topped online sales - she combines proven genetics with show-ring appeal. Not only will she compete successfully, but she'll also become a valuable asset to your breeding program.



SIRE TO LOT 305



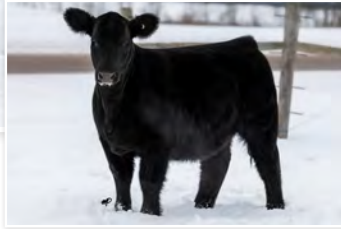
Lot 306

FITZNER FARMS AND SCALES FARMS

FF DISC SALLY 501N

REG: PENDING | TATTOO: 501N | DOB: 04/24/25 | MAINE ANGUS | **OPEN HEIFER**

Sire: WEIS ALL ME 10F
JBOY ONE FOR ALL 001J ET
MISS HIDDEN GEM 899F ET
SCC SCH 24 KARAT 838
Dam: FF DISC GABBY 260
FF IRIS 950



This daughter of One For All is flawless in her phenotype with a sweet disposition! The Angus side of her pedigree is stacked with quality powerhouse genetics.



Image inverted

Lot 307

T&C SHOW CATTLE

LAINIEY

REG: 566679 | TATTOO: HILD N421 | DOB: 04/21/25 | HIGH MAINE | **OPEN HEIFER** | HORNED

Sire: DADDYS MONEY 55Z
MINN CLASS ON CLASS
NMR MATERNAL MADE
JSC KATIE 55S
Dam: BOE GARTH
MINN COUNTRY GIRL



This female will be a "steer maker". Her depth of body and mass combined with her refined front-end gives her great presence. The extra width in her pins and loin along with her range of motion will make her a great addition to anyone's operation.



Lot 308

FARM 44

AMB'S TRIPLE M'S CHANTE

REG: 569301 | TATTOO: ABUTN7 | DOB: 04/07/25 | MAINETAINER | **OPEN HEIFER**

Sire: GOET 180
BBR MAFIA M.A.X. 667K ET
GEF MISS DOMINATRIX 236A
SULL FERRARI 6597D
Dam: MARLEY ET
MLJM BLACKBIRD 36C

This high-quality heifer has been a standout all summer and continues to rise to the top. She's the complete package - stacking proven maternal genetics with the look, presence, and eye appeal to compete in the show ring. Powerful from every angle, she demands your attention. Bid with confidence, she has the potential to raise some outstanding calves.



Lot 309

CT FARMS

C&T MISS HERSHEY

REG: 564397 | TATTOO: N06 | DOB: 03/26/25 | MAINETAINER | **OPEN HEIFER**

GOET I-80

Sire: DADDY'S MONEY 55Z
JSC VELVET 112W

CLNG ALIAS

Dam: C&T MISS OREO
C&T'S MISS DAISEY DUKE

Miss Hershey is sired by the very popular Daddy's Money bull and a pasture favorite of ours, she is very calm and kid broke. She is deep sided, lots of hair, and ready to move around the show ring with some flair. With her strong genetics you can feel good making steers or building a herd with her in the future.



Lot 310

CHERITHBROOK FARM

CBF- MS KATIE 2557N ET

REG: 564849 | TATTOO: MRCR 2557N | DOB: 03/13/25 | MAINE ANGUS | **OPEN HEIFER**

DAMERON FIRST CLASS

Sire: COLBURN PRIMO 5153
SILVEIRAS SARAS DREAM 1339

PREDATOR 19U

Dam: MINN KATIE 9B
JSC KATIE 5S



MATERNAL SIB TO LOT 310

Full sib to Minneart's leading donor Katie 016H. This female is a direct daughter of the million dollar producing Katie 9B! She has all the presence and extras for the show ring, but more importantly, the legendary pedigree to build an entire program around. Do not miss this genetic opportunity. Just Google search "Minn Katie 9B".



Lot 311

ALBRECHT LIVESTOCK

ALB MATERNAL GEM 12N

REG: 570661 | TATTOO: 12N | DOB: 03/02/25 | MAINETAINER | **OPEN HEIFER**

BPF MERCEDES BENZ 131U

Sire: NMR MATERNAL MADE
NMR 0-04X

Dam: ALB SWEET CAROLINE

BIG, BOLD, and BEAUTIFUL are all words to confidently describe this female. A female that possesses an incredible amount of center body and substance. From the side she is maternal in appearance and when you step behind her she certainly does not disappoint. She is sound structured and flexible on the move. Her sire, Maternal Made certainly does not need an introduction to

the show ring or the donor pens across the nation. ALB Maternal Gem 12N derives from a cow family that is easy fleshing, great uddered, fertile, and very gentle. A female that has a very bright future ahead of her as a show heifer or even in the pasture. Breed her for show steers or for some elite show heifers, she is the type to capitalize on. FIRST TIME SHOWMAN APPROVED. She is very docile. ***SPECIAL TERMS AND CONDITIONS: Albrecht Livestock is retaining the right to (TWO) successful IVF flushes on this female with a SIX EMBRYO MINIMUM per flush. The flush to be performed by Thumb Veterinary Services at our cost. Flushes are to take place before 2030 at buyers convenience.***



Lot 312

SEAMAN MAYER SHOWSTOCK

SMS JEMMAS COMMODITY 01N

REG: 563949 | TATTOO: 01N | DOB: 02/07/25 | MAINETAINER | **OPEN HEIFER** | HORNED

Sire: FREE K-KIM HOT COMMODITY ET
LNM TRAVELING COMMODITY 11H
OLSN MIDNIGHT RUBY 3252 11D ET
Dam: BNWZ DATA BANK 1311C ET
TJP JALYNNS JEMMA
TJP MISS JALYNNS JEWEL

This heifer is ready to show—easy doing, soft-made, sound at the ground, big footed, and loaded with hair. She's kid-friendly with the disposition to match her quality. Sired by the Reserve Champion Shorthorn Plus Bull at NAILE, she brings proven genetics and eye appeal.



Lot 313

CT FARMS

C&T MISS BLOSSOM

REG: 564395 | TATTOO: N01 | DOB: 02/03/25 | MAINETAINER | **OPEN HEIFER**

Sire: SIMPLY SAFE 60G
MINN SURE THING 248K
MINN KATIE 016HET
Dam: SSC SHELL SHOCKED 44B
C&T MISS ASH
C&T MISS KRACKER

This Maintainer heifer is a very stylish, clean fronted, and has chrome in all the right places. She is calm, big middle, flexible, and ready to go to the show ring or home to help build a herd.



Lot 314

SIMS CATTLE COMPANY

TSIM LADY MAY 03M

REG: 568912 | TATTOO: 2503M | DOB: 11/24/24 | MAINETAINER | **OPEN HEIFER**

Sire: DADDYS MONEY 55Z
BBR FX MAY WE ALL 6D
M.A.C. SHELBY 302A
BPF MIDDLE MAN 511A
Dam: TSIM MIDDLE MAN'S MUSE 04L
TSIM PAYLOAD PRINCESS 27G

Heres a heifer that will fit into anyone's herd. This heifer will be compete in the ring and make a good cow down the road. Her sire needs no introduction and is most importantly easy calving, sound, and a very attractive bull. Her dam, is a cow that goes back to the heart of our program and is part of a cow family that we have had for years. She has a beautiful udder, and is beautifully fronted while still packing nice power to her profile. This is a heifer I did not want to sell, but here she is!



Lot 315

HR CATTLE

HR CHA CHA SMOOTH 54M

REG: 562056 | TATTOO: 54M | DOB: 11/23/24 | MAINETAINER | **OPEN HEIFER**

Sire: BOE EPIC
DUEL ICON 802F
DUEL WORRY NOT 4303B
Dam: MR HOC BROKE
GARW MISS SADIE 288C
GCC MISS WHISKEY 5/82R

This fall-born heifer has already proven herself, winning her division at Ohio State Fair. Icon-sired, out of a Broker cow with Whiskey breeding straight from Griswold ranch on the granddam side. She's painted up with color and built like a powerhouse - big-legged, thick-topped, and ready to breed. Her dam's been a foundation cow here for years and her daughters are all making their mark. This is the front pasture kind that makes your operation look good and gets the job done. Ready for production now.



At the Forefront of Michigan Ag Marketing

Farm Machinery • Real Estate • Estates • Livestock • Business Liquidation

Auctioneers
Appraisers
REALTORS®



SHERIDAN
REALTY & AUCTION CO.
(517) 676-9800

SheridanAuctionService.com



GREAT LAKES



Sire Service



Where Quality **ALWAYS** Beats Quantity!

- GLSS provides the most advanced technology and highest quality standards.
- Offering the most objective and accurate sperm counting technology available.
- Collection and processing of beef and dairy bulls for domestic and export semen sales.
- A leader in whitetail semen collection and processing.
- Semen storage and distribution center
- Individual attention give to bulls boarded at GLSS
- Newly built EU facility gives customers the most access to all global markets.

GLSS[®]
CERTIFIED SEMEN SERVICES
CSS AVAILABLE

Visitors Welcomed!

Great Lakes Sire Service | Earl & Melissa Souva
723 Himebaugh Bronson, MI 49028
269-489-9888 | glssmi@yahoo.com | www.greatlakessireservice.com

HEREFORD *Consignors*

SALE MANAGER:

Brandon Goering
(419) 551-5461

www.mihereford.com

BREASBOIS FARM

Margaret & Heather Breasbois
310 E. Freeland Rd.
Merrill, MI 48637
(989) 859-0815

CIRCLE N RANCH

Paige & Philip Nichols
3681 S Meridan Rd.
Ovid, MI 48866
(989) 388-3377

GRAND MEADOWS FARM

Dave Bielema & Ben Diekevers
PO Box 550
Ada, MI 49301
(616) 292-7474

HILLSIDE HEREFORDS

Amy Thueme
4662 Lum Rd.
Attica, MI 48412
(810) 294-7401

JNE LIVESTOCK

Jamie & Bret Kraemer
206 W 14th Ave.
Norway, MI 49870
(906) 282-2493

BREED REPRESENTATIVE:

Jeff MacNaughton
(517) 230-1253

Dave Bielema
(616) 292-7474

LAUDERMAN FAMILY

Connie Laudeman
3629 5th Rd.
Bremen, IN 46506
(574) 209-6470

MCDONALD FARMS

Gerald Green & Scott McDonald
7791 Eastern Ave.
Grand Rapids, MI 49508
(517) 819-7978

MILLER CREEK HEREFORDS

Charles & Fred Miller
3204 132nd Ave.
Hopkins, MI 49328
(616) 291-3737

TRIPLE N FAMILY FARM

Aaron & Lauren Nykamp
4215 48th Ave.
Hudsonville, MI 49426
(616) 218-4989

VENTURA FARM

Kenneth & Deb Geuns
4995 Sleight Rd.
Bath, MI 48808
(517) 230-8502



Lot 401

MILLER CREEK FARM

MCF HECTOR

REG: 44704085 | TATTOO: 9N | DOB: 04/07/25 | HEREFORD | BULL

NJW 79Z Z311 ENDURE 173D ET

Sire: UPS HE DELIVERS 0290 ET

UPS MISS HOMETOWN 4279 ET

KT SMALL TOWN KID 5051

Dam: CSU MS CATO SPOILER 0251

CSU MISS B207

This He Delivers son possesses the phenotype we are all searching for - long bodied, with plenty of depth, pigmented and conservative marked, his size is ideal for a bull his age, and we believe he will sire some exceptional progeny. So, whether you are needing a bull to cover cows this spring or get a jump on next summer's bull battery, this He Delivers son is ready to work.

CED	BW	WW	YW	MM	REA	MARB	\$BII	\$CHB
5.1	4.1	68	107	32	0.7	0.21	596	151



Lot 402

VENTURA FARM

VF PROFIT MARGIN 508N

REG: 44694468 | TATTOO: 508N | DOB: 03/20/25 | HEREFORD | BULL | SCURRED

H THE PROFIT 8426 ET

Sire: BK CMCC KOOL PROFIT K001ET
BK DISTINCTIVE POINTS 641D ET

BR BELLE AIR 6011

Dam: MF 486 HENNIE 6011 2012 ET
DM 4128 8Y STACIE 486 ET

Selling three-quarter interest and full possession. Ventura Farm reserves one-quarter semen sale interest. Loaded with mass and muscle, short marked, red to the ground, and lots of eye pigment. Sired by BK CMCC Kool Profit K001, the Reserve Grand Champion Bull at the 2024 Cattlemen's Congress, and out of our Belle Air 6011 x Stacie 486 cow. Imagine the phenomenal Hereford females and elite Hereford show steers that this bull could sire. Light scurs. 90 lb. birth weight. 760 lb. adjusted weaning weight. 5.9 frame score. Profit Margin was the Grand Champion Bull in the open show at the 2025 Michigan Junior Hereford Association Fall Spectacular Show.

CED	BW	WW	YW	MM	REA	MARB	\$BII	\$CHB
2.8	3.3	5	97	25	0.45	0.23	375	146



Lot 403

GRAND MEADOWS FARM

GRAND POWERCROSS 405F J08 N19

REG: 44641590 | TATTOO: N19 | DOB: 03/04/25 | HEREFORD | BULL

R LEADER 6964

Sire: CMF ERNST POWER BROKER 405F
CMF 124B DOMINETTE 297D

C DOUBLE YOUR MILES 6077 ET (6077) P43672888

Dam: GRAND STARCROSSED J08 ET
GRAND STARCROSSED 38Z ET

This is a can't go wrong young sire backed by pedigree and data! Short marked, big footed and sound to the ground, with excellent epds to go along with it! This one will be safe for heifers, but still add mass and volume to his progeny.



Image inverted

CED	BW	WW	YW	MM	REA	MARB	\$BII	\$CHB
7.1	1	63	100	34	0.57	0.27	576	127



Lot 404

CIRCLE N RANCH

CNR BATMAN

REG: 44660928 | TATTOO: CNR 252 | DOB: 02/20/25 | HEREFORD | BULL | HORNED

CRR 719 CATAPULT 109

Sire: CHEZ/PUGH/HARA LOGIC 8815F ET
R SWEET RED WINE 039

BR BELLE AIR 6011

Dam: BAR STAR 6011 WHATAGIRL 2194ET
BAR STAR 91X WHATAGIRL 410

Batman is a big boned, stout made bull that is easy tempered and kid safe. He has a strong pedigree and a sleek profile. He will not only add bone and depth to your herd but also eye appeal and gentle spirit.

CED	BW	WW	YW	MM	REA	MARB	\$BII	\$CHB
1.9	4.3	60	92	32	0.19	0.24	406	115



SIRE TO LOT 405

Lot **405**

MCDONALD FARMS

BK PROUD 7523NREG: 44656990 | TATTOO: 7523N | DOB: 02/09/25 | HEREFORD | **BULL**

CRR 971 LEVITATE 142

Sire: NJW 119E 142 PROUD 35L

NJW 8B 164C LEXY 119E

CRR 5280

Dam: BK ECCENTRIC POINTS 7523E ET
HAPP KOOL AID POINTS 1218 ET

CED	BW	WW	YW	MM	REA	MARB	\$BII	\$CHB
-2.3	6	69	115	21	0.43	-0.09	361	92

A bull we were fortunate enough to acquire alongside a donor cow purchase this past spring from Buck Cattle Company has been a standout since he jumped off the trailer. Working from the ground up, he stands true, wide-based with large feet and legs. From there, he provides an impressive look from the side and doesn't disappoint as you move behind him, proving to be stout-hipped, big-backed with extra capacity. Couple all that with his stacked pedigree being sired by NJW 119E 142 PROUD 35L, and going back to HAPP Kool Aid Points 1218 ET. The sky truly is the limit with a combination bull like this.



Image inverted



SIRE TO LOT 406

Lot **406**

LAUDEMAN FAMILY

SRF MR WRANGLERREG: 44690735 | TATTOO: N12 | DOB: 01/23/25 | HEREFORD | **BULL**

R LEADER 6964

Sire: KJ BJ 309C LEADER 182F

KJ BJ 236X TIMWISE 309C ET

DELHAWK KAHUNA 1009 ET

Dam: SRF SCRATCH MY TAIL ET
MSU BR MARKETTE 55N

CED	BW	WW	YW	MM	REA	MARB	\$BII	\$CHB
2.6	3.2	65	104	29	0.71	0.09	424	118

Super complete, sums up this bull. He is everything you need in a bull. He is thick, sound, and deep, with the ability to get out and move off of both ends. He is out of the very popular Leader 182F. A bull that is known for his maternal traits and producing cattle that are competitive on the national level. His mother is a daughter of MSU BR Markette 55N, a multiple time National Champion. If you need a bull that will increase WW, YW, M, and REA, look no further. The MSU BR Markette 55N bloodline is still producing quality cattle 26 years later.



Image inverted



SIRE TO LOT 407

Lot 407

HILLSIDE HEREFORDS

PSC OLIVIA'S SENSATION 521N ET

REG: 44692319 | TATTOO: 521N | DOB: 05/21/25 | HEREFORD | OPEN HEIFER | HORNED

CHURCHILL SENSATION 028X

Sire: UPS SENSATION 2296 ET

UPS JT MISS NEON 7811 1ET

C MILES MCKEE 2103 ET

Dam: PSC OLIVIA 101C ET

STAR KKH SSF OLIVIA 15U ET

CED	BW	WW	YW	MM	REA	MARB	\$BII	\$CHB
5.6	2.6	57	90	34	0.86	0.08	475	138

Let this standout Sensation 2296 daughter catch your eye with her stylish, feminine look, clean front, and balanced design. She combines depth of body and natural rib shape with a neat top line and refined overall silhouette, all while being quiet-natured and easy to handle. If you don't already have a Sensation daughter in your program - one of the breed's most consistent sires for high-quality, functional, and highly sought-after maternal progeny - she comes backed by proven genetics. Her strength as a future brood cow shows in her Milk and MCE EPDs, with functional udder design and teat correctness placing her in the top third of the breed. She brings an impressive blend of eye appeal and long-term productivity, making her a standout replacement prospect built to elevate any program



Image inverted



SIRE TO LOT 408

Lot 408

VENTURA FARM

VF MOLLY 519N

REG: 44694469 | TATTOO: 519N | DOB: 04/19/25 | HEREFORD | OPEN HEIFER | SCURRED

H THE PROFIT 8426 ET

Sire: BK CMCC KOOL PROFIT K001ET

BK DISTINCTIVE POINTS 641D ET

RKM 505C DIVERGENT 07H

Dam: RKM VF MARYANN 25K

RKM 5051 GINGER 90G

CED	BW	WW	YW	MM	REA	MARB	\$BII	\$CHB
6	1.1	46	79	31	0.66	0.27	436	140

Molly is sired by BK CMCC Kool Profit K001 that is owned by Buck, Moore, and McDonald and out of our Maryann cow that is a Divergent 07H x Small Town Kid. Maryann was the Grand Champion Hereford Female at the 2023 Michigan State Fair. Molly is the "spittin image" of her mother that has an impeccable structure and a look that will stop you in your tracks. Scurred.


Lot 409

TRIPLE N FAMILY FARM

RCF ETHAL 25E

 REG: 44669399 | TATTOO: 25E | DOB: 04/09/25 | HEREFORD | **OPEN HEIFER**

Sire: BR CURRENCY 8144 ET
 RRR BONES 316 ET
 WRB MARVEL BELLE 896M
Dam: CCC 316 WAYLON 709
 CCC 709 LUCY 915
 ROF 743 LILLY 402B ET

Greatness is in this young females blood. RCF Ethal 25E is a Granddaughter of the 2010 National Western stock show Champion Hereford Bull, BR Currency 8144 ET. This big boned, long bodied heifer offers substance and flexibility that screams cow power. Ethal is flashy, big haired, built right and is ready to finish out her show career and go on and add quality to your herd. Don't miss your opportunity to own her!


Lot 410

JNE LIVESTOCK

JNE ELEANOR ROSE

 REG: 44681455 | TATTOO: JNE25 | DOB: 03/24/25 | HEREFORD | **OPEN HEIFER** | SCURRED

Sire: PURPLE REUBEN JAMES 40A ET
 KCW COTTON'S YELLOWSTONE 220H
 KCW COTTON'S JOURNEY 223 ET
 CCC 0245 CASHIN IN 807
Dam: BRH MS MOLLY CASH 2113
 BRH MS SKYY 8001



SIRE TO LOT 411


Lot 411

BREASBOIS FARMS

BF HMB 159H AURORA 2509

 REG: 44690198 | TATTOO: 2509 | DOB: 03/22/25 | HEREFORD | **OPEN HEIFER** | HORNED

Sire: KJ BJ 309C LEADER 182F
 KJ TWJ 907E LIBERTY 159H ET
 KJ BJ 339A CHARDONNAY 907E ET
 H MONTGOMERY 7437 ET
Dam: PUGH HAWK MS SAPPHIRE PJ14 ET
 DELHAWK SAPPHIRE 102A ET

CED	BW	WW	YW	MM	REA	MARB	\$BII	\$CHB
6.5	0.7	40	64	34	0.96	0.03	405	111

Aurora is a dark red Liberty daughter out of a DelHawk Sapphire daughter. She is dark red and conservatively marked with pigment on both eyes. Rory is in the top 3% of the breed for REA and has great milk and BW numbers. We will post videos on our Facebook page BreasboisFarmsHerefordCattle, closer to sale day. She is MD and DB free and has been vaccinated for brucellosis.



Lot 412

GRAND MEADOWS FARM

GRAND STAR POWER K32 405F N18

REG: 44641913 | TATTOO: N18 | DOB: 03/08/25 | HEREFORD | **OPEN HEIFER**

R LEADER 6964

Sire: CMF ERNST POWER BROKER 405F
CMF 124B DOMINETTE 297D

C DOUBLE YOUR MILES 6077 ET

Dam: GRAND STARCROSSED K32 ET
GRAND STARCROSSED 38Z ET

CED	BW	WW	YW	MM	REA	MARB	\$BII	\$CHB
7	1.1	61	99	23	0.43	0.34	523	130

If you want well bred and complete, this heifer is for you! The Powerbroker daughters have the look, and numbers to back them up! We have too many too keep them all, so buy with confidence!



Image inverted



SIRE TO LOT 413

Lot 413

LAUDEMAN FAMILY

SRF MISS LIBERTY

REG: 44690733 | TATTOO: N23 | DOB: 03/08/25 | HEREFORD | **OPEN HEIFER**

CHURCHILL BROADWAY 858F

Sire: CHURCHILL DESPERADO 029H
CHURCHILL LADY 8251F ET

SULL TCC MR CUSTOMMADE 340ET

Dam: SRF MISS MEGHAM
SRF MISS ADDIE 15EJNZB ET

CED	BW	WW	YW	MM	REA	MARB	\$BII	\$CHB
-0.7	4.3	64	104	32	0.39	0.14	485	127

She puts all the right pieces together. She has the look and the high growth, milk, and carcass, that separates her from the rest. She is out of the very popular Churchill Desperado 029H, a bull known for his carcass and growth performance. Her mother goes back to the Sullivan Custom Made, a bull that produced many champions in his life. If you show her or put her in the pasture you will not be disappointed in this heifer.

SHORTHORN

and Ignored

SALE MANAGER:

Brandon Goering
(419) 551-5461

www.michiganshorthorns.com

BREED REPRESENTATIVE:

Carla McLachlan
(517) 242-2395

ALBRECHT LIVESTOCK

Hayley & Claudia Albrecht
5287 Rossman Rd.
Kingston, MI 48741
(810) 355-5254

BAL FAMILY FARM

David and Nicolette Bal
W6195 Boundary Line Rd.
Norway, MI 49870
(906) 282-3505

BROWN RIDGE FARM

Mike Brown
9619 W Garbow Rd.
Middleville, MI 49333
(269) 953-6574

JNE LIVESTOCK

Bret & Jamie Kraemer
206 W 14th Ave.
Norway, MI 49870
(906) 282-2493

KASTEL SHOW CATTLE

Josh Kastel
13591 Packard Rd
Hudson MI 49247
(419) 344-3476

MCKAY FARMS

Morgan & Gordon McKay
11149 S. Vassar Rd.
Holly, MI 48473
(810) 875-6722

MURRAY FARMS

Nolan Murray
2850 McAllister Rd.
Ubly, MI 48475
(989) 553-4454

NARROW BROOK FARMS

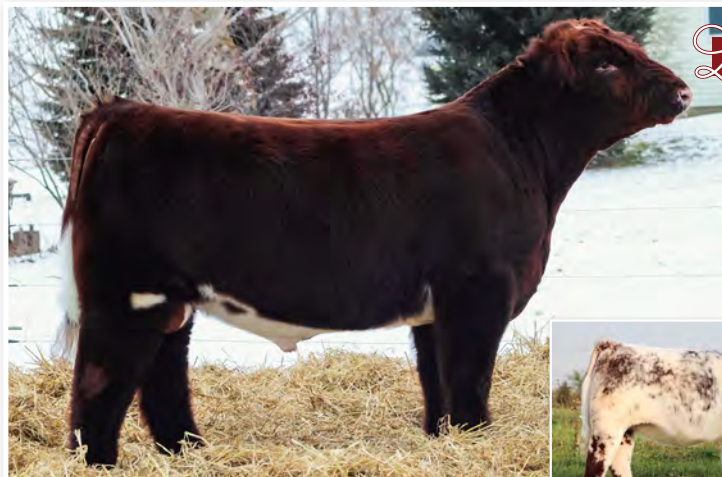
Matt & Tara Miller
2685 East Bellevue Hwy
Charlotte, MI 48813
(517) 202-3628

SEAMAN MAYER SHOWSTOCK

Justin Seaman & Haylie Mayer
9760 W Washington Rd.
Sumner, MI 48889
(989) 763-8901

STEINHAUS PONDEROSA FARMS

Cody & Taylor Steinhaus
15032 150th Ave.
LeRoy, MI 49655
(517) 492-7527



Lot 501

ALBRECHT LIVESTOCK

ALB H SOMETHIN' DIFFERENT 5N ET

REG: U4405575 | TATTOO: 5N | DOB: 03/01/25 | SHORTHORN | BULL | DEHORND

KA' BA LEGEND 102

Sire: JM VORTEC ET

WAUKARU WIMPLE 165

FSF STARBURST 058

Dam: SBR MAGGIE 702E

SBR MAGGIE 114Y



FLUSH MATE TO LOT 501

standard has to be met and he has certainly met the bar selling females in our first Building on Success online sale Shorthorns in Java, SD and they have truly made a huge positive impact within our herd and a permanent place in Kingston for many years to come. If you want to raise elite show heifers with a unique twist of pedigree or future donor cows that have the added growth and performance to back them we think he can be utilized effectively. A really solid candidate for the fall majors next year as a show bull! Extremely docile. ***SPECIAL TERMS AND CONDITIONS:**

Albrecht Livestock reserves the right to (TWO) successful semen collections at our expense and buyers convenience prior to 2030.*



Lot 502

JNE LIVESTOCK

JNE FIRE & ICE

REG: 4395295 | TATTOO: 32 | DOB: 03/31/25 | SHORTHORN | BULL | SCURRED

DF WACO 6W

Sire: HILL HAVEN FIRESTORM 28C
HILL HAVEN BREATHAKER 35Y

SULL RED SENSATION 6554D ET

Dam: KOSC 213G
KOSC KRISTINA 5A

CED	BW	WW	YW	MILK	REA	MARB	\$BMI
12	2	42	60	25	0.33	-0.45	110.32



Lot 503

STEINHAUS PONDEROSA FARMS

OFSS WHITE THUNDER

REG: 4391362 | TATTOO: 0401 | DOB: 04/01/25 | SHORTHORN | BULL

HAHN SPIRIT C28F

Sire: SBFF SPIRITS RUMCHATA 402H
HAHN MARVEL C33C

JAF SEDUCTIVE P1033

Dam: RFS ROSEMARY ANNIE
KEHNE'S ROSEMARY JUNE

Powerful Shorthorn bull with extra muscle and a clean front. Stout topped, sound structured, and easy-moving. Calving-ease focused and a great fit for heifers, adding performance and quality to the next calf crop.



CED	BW	WW	YW	MILK	REA	MARB	\$BMI
15	1.4	40	5	17	0.28	-0.08	116.79



Lot 504

BROWN RIDGE FARM

FAMM CRYSTAL'S MOMENTUM EV

REG: AR4405550 | TATTOO: 12M | DOB: 12/03/24 | SHORTHORN PLUS | BULL

FREE K-KIM HOT COMMODITY

Sire: CSF EVOLUTION HC
CF BOY CAROLINE 210 ET

COLBURN PRIMO

Dam: SULL CRYSTAL'S LUCY 7211E ET
SULL CRYSTAL'S LUCY -1

A dominant son of Evolution backed by elite maternal power. Out of the former Supreme Michigan Show Points Heifer of the Year, SULL Crystal's Lucy 7211E ET, this bull combines championship lineage with real-world performance. He is deep-bodied, thick-made, and fast growing, offering the kind of mass and dimension that stand out in any program. A 3/4 sibling in blood to CF CSF Crystal's Swan 015 EV X ET, the Junior National and NAILE Champion, he is built to advance a winning legacy.

CED	BW	WW	YW	MILK	REA	MARB	\$BMI
13	1.6	52	77	16	0.44	0.05	124.35


Lot 505

MURRAY FARMS

MURRAY GINGA NINJA 02

 REG: AR4405414 | TATTOO: N01 | DOB: 04/06/25 | SHORTHORN PLUS | **BULL** | SCURRED

FREE K-KIM HOT COMMODITY

Sire: LNM TRAVELING COMMODITY 11H
 OLSN MIDNIGHT RUBY 3252 11D ET

7L AUGUSTA VISION 8410 ET

Dam: SIS PEPPERMINT AV 47 ET
 F&F SILVER DIAMOND

"Ginga Ninja" has been a favorite by many through the barn this year, he's stout made, attractive fronted and functional. Being a 7/8 shorthorn, he does have the ability to make purebreds when used on purebred cows! To top it off his full sister was successfully campaigned in the 2024/25 show season, including multiple top 5's and a breed champion at the state fair. The homework's been done, call me when they hit the ground.

CED	BW	WW	YW	MILK	REA	MARB	\$BMI
12	2.2	39	53	18	0.37	-0.04	115.72


Lot 506

JNE LIVESTOCK

JNE ICE QUEEN

 REG: 4395617 | TATTOO: 31 | DOB: 02/25/25 | SHORTHORN | **OPEN HEIFER**

AF SL SIN CITY ET

Sire: SULL SINISTER 7082 ET
 SS LAKESIDE JANE MARY 694

SULL GNCC ASSET ET

Dam: JNE GRACE'S BEST ASSET
 KOSC 2136

CED	BW	WW	YW	MILK	REA	MARB	\$BMI
9	3.5	42	60	22	0.39	-0.2	115.92


Lot 507

KASTEL SHOW CATTLE

RJC CANDY CANE N25 ET

 REG: 4404427 | TATTOO: N25 | DOB: 03/15/25 | SHORTHORN | **OPEN HEIFER** | HORNED

FSF NEAR PERFECT

Sire: FSF PERFECTION 812
 FSF SIERRA CRYSTAL

WHR SONNY 8114

Dam: SULL LADY CRYSTAL434P-3 ET CL
 AF MARGIES DREAM LADY 05 ET

Lady Crystal needs no introduction with the mark she's made on the cattle industry. She's been the mother of champions year after year, most recently being a full sib to Candy Cane being shown by Weston Long who was the 2025 Iowa State Fair Shorthorn Champion Female. On top of that a full sister commanded 56000 for 1/2 interest at RJ Cattle company last year. Perfectly marked, with explosive muscle and plenty of shag. Reserving the right to 2 flushes.

CED	BW	WW	YW	MILK	REA	MARB	\$BMI
7	4	39	59	20	0.53	-0.16	98.37



Lot 508

BAL FAMILY FARM

BAL NALA LUE

REG: 4394887 | TATTOO: BAL58 | DOB: 05/03/25 | SHORTHORN | OPEN HEIFER | SCURRED

JAKES REINCARNATION 228Y

Sire: JSF RONAN 5H

JSF ROAN ROSE 36F

FAIR RED, WHITE & ROAN

Dam: BAL FAMILY CATTLE LUNA

BFC RISSY ROO

Jet necked, sound, and shaggy, is how we describe this female. She is complete in her design from her hip to her rib shape and has all the makings of a powerhouse show heifer. With stacked genetics from her sire, JSF Ronan 5H, she will make an excellent addition to your breeding program.



SIRE TO LOT 508

CED	BW	WW	YW	MILK	REA	MARB	\$BMI
10	-1	37	47	20	0.45	-0.15	132.2



Lot 509

NARROW BROOK FARMS

NBS LL DAPHNE'S FLASH DANCER

REG: 4404195 | TATTOO: 36N | DOB: 05/21/25 | SHORTHORN | OPEN HEIFER

STUDERS UNIVERSAL 10B

Sire: BYLAND FLASH 9U106

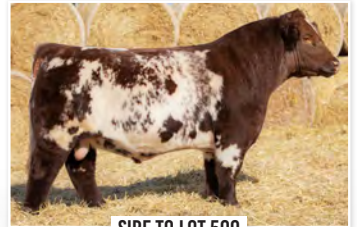
BYLAND CINDY BEAUTY 5M106

CSF LONG LOOK HC 706 ET

Dam: NBS DAPHNE F36L

NBS DAPHNE 36F

How fun will it be to show a hairy roan heifer that has "the look"? Definitely a rhetorical question. Especially when the quality is backed by proven cow families and a sire that stamps the photogenic kind, time and time again.



SIRE TO LOT 509

CED	BW	WW	YW	MILK	REA	MARB	\$BMI
17	0.9	52	72	23	0.64	0.02	151.21



Confirmed Pregnant!



2024 NAILE RES. DIVISION BRED & OWNED SHORTHORN PLUS HEIFER

Lot 510

SEAMAN MAYER SHOWSTOCK

SMS PIPER 50M

REG: AR4380734 | TATTOO: 50M | DOB: 02/10/24 | SHORTHORN PLUS | **BRED HEIFER**

K-KIM ALLURE 124M ET

Sire: FREE K-KIM HOT COMMODITY

K-KIM MEG 270M ET

COLBURN PRIMO

Dam: SHADYBROOK PRIMONICA 50K ET

SBF VERONICA 92Y

AI DATE: 6/10/25 | SIRE: SULL KNIGHTLY FORCE 6295D | REG: 4248825 | DUE DATE: 3/20/26

CED	BW	WW	YW	MILK	REA	MARB	\$BMI
16	1	50	68	18	0.35	0.04	135.75

This 2024 NAILE Reserve Division Bred & Owned Shorthorn Plus Heifer stacks generations of success - out of a MiPoints standout and granddaughter of the famed Veronica from Shadybrook. Confirmed bred AI to a full sib to Sull Red Knight, she's a genetic and maternal home run.



PATERNAL GRANDDAM TO LOT 511

Lot 511

KASTEL SHOW CATTLE

JFK SKITTLES

REG: PENDING | TATTOO: N5 | DOB: 05/05/25 | SHORTHORN PLUS | **OPEN HEIFER**

Sire: LITTLE BRO

Dam: D11 (COMMERCIAL)

Younger female with plenty of mass, power and rib shape. Really cool brood cow, with the show shag to go with it. Her sire, Lil Bro is a maternal sib to Cash is King and Jack of Hearts. He is really added the punch that's in his pedigree to his off spring.



Lot 512

NARROW BROOK FARMS

NBS LAYLA'S HOT FLASH ET

REG: AR4404194 | TATTOO: 9N | DOB: 05/06/25 | SHORTHORN PLUS | OPEN HEIFER

STUDERS UNIVERSAL 10B

Sire: BYLAND FLASH 9U106

BYLAND CINDY BEAUTY 5M106

PET NBS FLYBOY 747 ET

Dam: NBS LAYLA XG

ALI COW

"Hot Flash" is as pretty fronted as any heifer in our offering and yet explodes into a high volumed, correctly designed, soft structured female for the most discriminating breeder or showman. Her full sister excelled at the 2025 Michigan State Fair as Champion Shorthorn Plus and Third Overall Female!

CED	BW	WW	YW	MILK	REA	MARB	\$BMI
10	2.9	61	89	23	0.79	0.21	141.37



Lot 513

MCKAY FARMS

SMCK CHOPPER PERF X

REG: AR4400700 | TATTOO: N523 | DOB: 05/28/25 | SHORTHORN PLUS | OPEN HEIFER

FSF NEAR PERFECT

Sire: FSF PERFECTIO 812

FSF SIERRA CRYSTAL

Dam: SMCK CHOPPER

Big hair, soft middle and those bendy back legs, this perfection daughter is fun to look at and watch on the move. This red roan heifer will be competitive in the show ring and exciting to breed on!

CED	BW	WW	YW	MILK	REA	MARB	\$BMI
10	1.6	45	68	22	0.44	0.03	115.56



Lot 514

BAL FAMILY FARM

BAL SUNRISE JULIP

REG: AR4394889 | TATTOO: BAL62 | DOB: 06/05/25 | SHORTHORN PLUS | OPEN HEIFER

JAKES REINCARNATION 228Y

Sire: JSF RONAN 5H

JSF ROAN ROSE

JACK OF HEARTS

Dam: BAL FAMILY CATTLE RUBY SUNRISE

SULL RUBY 7539E ET

We have one word to describe this young heifer WOW. Not only is she super feminine from top to bottom, she's got the genetic chops to back her on both sides! Her dam has been shown successfully in Wisconsin and Michigan winning 2023 and 2024 Champion Heifer UP State Fair, 2024 Reserve Champion Shorthorn Plus Heifer, Boo Bash and 2025 Grand Champion Shorthorn Plus Cow/Calf pair at UP State Fair. This heifer is show ready and will be a great asset to your herd as well as the show ring.



SIRE TO LOT 514

CED	BW	WW	YW	MILK	REA	MARB	\$BMI
16	-0.3	48	61	21	0.39	-0.03	141.19

SIMMENTAL

Consignors

SALE MANAGER:

Brandon Goering
(419) 551-5461

BREED REPRESENTATIVE:

Jake Homich
(616) 788-8792

www.michigansimmental.org

3GC CATTLE

Tim & Brian Heeg
5525 Mason Rd.
Fowlerville, MI 48836
(517) 404-0888

BATES FAMILY LIVESTOCK

Dan & Dalaney Bates
4130 Volz Rd.
Sebewaing, MI 48759
(989) 225-0200

CAMPBELL FARMS

Gary Campbell
2502 East Steel Rd.
St. Johns, MI 48879
(517) 243-1237

CHERITHBROOK FARM

Matt & Tara Reeder
3011 Meridian Rd.
Okemos, MI 48864
(517) 204-5615

DALGORD FAMILY SHOW CATTLE

Emersyn VanRemortel
3417 Pine Forest Dr.
Green Bay, WI 54313
(920) 501-9143

DALGORD FAMILY SHOW CATTLE

Isobel Miller
2944 II Rd.
Garden, MI 49835
(906) 360-9251

DELONG CATTLE COMPANY

Caiden Parker & Kathy Moss
8673 Hadley Rd.
Cass City, MI 48726
(989) 214-0950

DUBOIS SIMMENTAL

Alfred DuBiois
6600 Dobson Rd.
Jonesville, MI 49250
(517) 849-9586

FILHART FAMILY FARM

Ryan & Ed Filhart
5160 E Coleman Rd.
Clare, MI 48617
(989) 513-8756

FINEGAN FARMS

Stacy Finegan
9400 Concord.
Jonesville, MI 49250
(517) 599-0018

FLAT RIVER LIVESTOCK

Jake & Carlie Homich
2171 S Wyman Rd.
Remus, MI 49340
(616) 788-8792

GEN3 GENETICS

Kollin & Emily Johnson
107 Pattie Gap Rd.
Philadelphia, TN 37846
(517) 932-8621

HERBER SHOW STOCK

Tyler & Ashlynn Herber
1481 Bay Meadows Ct.
Okemos, MI 48864
(989) 992-9668

HIDDEN GEMS FARM

Trevor & Alexis Morton
8843 N DeWitt Rd.
St. Johns, MI 48879
(517) 512-8615

JB CATTLE CO.

Julie Blonde
8080 Mosherville Rd.
Litchfield, MI 49252
(517) 610-6018

JUDGE FAMILY SHOW CATTLE

Julie Judge
5141 8 Mile Rd.
Remus, MI 49340
(517) 881-6001

LAKE FARMS

Seth & Molly Lake
4340 S Jerome
Ithaca, MI 48847
(989) 763-1939

LOPRESTO FARMS

Brandon LoPresto
9061 Homer Rd.
Litchfield, MI 49252
(517) 607-9266

MARSHALL VISTA LIVESTOCK

Neil & Brenda Marshall
29501 H Dr. S.
Concord, MI 49237
(517) 425-9396

N/S CATTLE

Kyle & Ashley Nash
8515 S Athey Ave.
Clare, MI 48617
(989) 444-9217

NARROW BROOK FARMS

Matt & Tara Miller
2685 East Bellevue Hwy.
Charlotte, MI 48813
(517) 202-3628

SIMS CATTLE COMPANY

Connor McArthur & Todd Sims
5567 Irvin Shoots Rd. W
Marion, OH 43302
(517) 398-7200

TC LIVESTOCK

Trevor Chaffin
2315 21 Mile Rd NE
Cedar Springs, MI 49319
(616) 560-3481

WARDYNSKI LIVESTOCK

Frank Wardynski & Violet Amos
713 River St.
Ontonagon, MI 49953
(906) 281-0918

WOOD CATTLE

Adam & Heather Wood
6072 W Pierce Rd.
Ithaca, MI 48847
(989) 763-6600



Lot 601

FLAT RIVER LIVESTOCK

FLAT SOMETHING ABOUT SAL

REG: 4600401 | TATTOO: N319 | DOB: 03/19/25 | PUREBRED | BULL

MR HOC BROKER

Sire: H20S DIAMOND BROKER

KLS DIAMOND W516

JSUL SOMETHING ABOUT MARY

Dam: DNCR MISS SAMMY J72

DNCR MISS CAFFEE D301

A striking blaze face bull that is built for the long haul. Ideal in his set to his hock and squishy in his pasterns, this bull is sound and ready to chase cows for many years to come. He offers a bold, masculine presences with added hip and the durability to thrive as a herd sire prospect - don't miss the opportunity to put this bull to work in your program.

CED	BW	WW	YW	MILK	REA	MARB	API	TI
12.1	0.1	57.8	75.8	14.6	0.47	0.1	120.9	66.3



Lot 602

TC LIVESTOCK

TDCL TITUS

REG: 4491129 | TATTOO: N2 | DOB: 02/24/25 | PUREBRED | BULL

GWS EBONYS TRADEMARK 6N

Sire: REMINGTON SECRET WEAPON 185

AUBREY'S BLACKBLAZE II 5T

W/C BANKROLL 811D

Dam: JDCC BANKROLL 10226

JDCC LOCK DOWN 926D

Titus is a stout made wide ribbed powerful purebred. This red baldy bull will pack red meat and dimension on his progeny. His dam is my favorite cow I got from Bob with perfect udder, teat, and hoof I put some older genetics in her and Secret weapon did not disappoint. Don't miss this opportunity!

CED	BW	WW	YW	MILK	REA	MARB	API	TI
9.1	2.2	77.2	112	19.8	0.81	0.1	108.9	76



Lot 603

TC LIVESTOCK

TDCL DEMENTUS

REG: 4491128 | TATTOO: N1 | DOB: 02/13/25 | 3/4 SM 1/8 AN 1/8 SS | BULL

W/C FORT KNOX 609F

Sire: W/C BET ON RED 481H

W/C ANGEL 7113E

W/C BANKROLL 811D

Dam: SULL RED DATE 644H

SULL CRYSTAL'S JUDY 6444D ET

Bet on Red stamped out another good one! Dementus is out of my cherry red tank of a cow from Sullivans. He is stacked with genetic potential and will add length and red meat to your calves. Don't miss him on Saturday!

Image inverted

CED	BW	WW	YW	MILK	REA	MARB	API	TI
12.3	0.8	70.8	106.4	23.4	0.89	0.17	107	71.8


Lot 604

LAKE FARMS

LKFM LAKE EFFECT

 REG: 4549237 | TATTOO: 402N | DOB: 02/02/25 | 5/8 SM 3/16 AN | **BULL**

REMINTONSECRETWEAPON185

Sire: **SSC SHELL SHOCKED 44B**
 LAZY H SHEZ TOO COOL W 58

Dam: **LKFM ZO EY**
 981H


2025 SUPREME BULL AT MI STATE FAIR

The snow storm is brewing, and you won't want to miss out on the Michigan State Fair Youth Supreme Bull of 2025! LKFM Lake Effect is a Percentage Simmental bull that can elevate any program. He's ready to turn out today, built right, and designed to breed cows efficiently and safely with exceptional calving ease. This bull is extremely stout, powerful, wide-based, and bold-made, yet still moves incredibly well with the kind of athleticism you want in a long-lasting sire. He is built to cover cows, hold up on pasture, and leave you with calves that grow, grade, and flat-out perform. If you're looking for a dependable herd sire with the structure, muscle, and calving ease to improve your entire calf crop, this bull is ready to go to work.

CED	BW	WW	YW	MILK	REA	MARB	API	TI
14.1	-0.4	68.9	102.3	21.9	0.53	0.14	111.1	70.9


Lot 605

LOPRESTO FARMS

TURBO

 REG: 4604438 | TATTOO: N11 | DOB: 01/26/25 | PUREBRED | **BULL**

ASR AMERICAN PROUD H0301

Sire: **LRS DUTTON 611K**
 LRS MS EAGLE 9836

Dam: **A&ND PEANUT**
 PSSS STCC TKO'S BEAUTY

A stout, deep-bodied purebred Simmental bull that combines eye appeal with practical performance. He is long-sided and big-bellied, with a smooth shoulder and ample rib shape, standing on a sound set of feet and legs. Sired by an increasingly popular sire in the Simmental breed, LRS Dutton, Turbo carries proven genetics known for consistency, structural integrity, and productive progeny. If that's not enough upside, this bull certainly inherited his dam's calm temperament and handling ease, making him an asset for any operation. Don't miss out on your chance to add sought-after genetics and docility to your herd.

CED	BW	WW	YW	MILK	REA	MARB	API	TI
5.5	0.9	99.1	163.5	17.3	1.46	0.18	135.4	93.6



Image inverted

Lot 606

N/S CATTLE

NASH'S SHELL SHOCKED X10

 REG: 4604807 | TATTOO: N10 | DOB: 01/22/25 | 3/4 SM 1/4 AN | **BULL**

REMINGTON SECRET WEAPON

Sire: **SSC SHELL SHOCKED 44B**
 LAZY H SHEZ TOO COOL

Dam: **W/C EXPRESS LANE296**
NASH'S EXPRESS LADY 10
 NASH'S 10

This bull is the result of multiple generations of AI breeding, his dam was our favorite heifer out of WC express Lane and a beautiful SAV Final Answer granddaughter, he is sired by one of the most consistent AI Sire We have used SSC Shell Shocked!! This bull will sire replacement females that you will want to keep. BW 74 pounds

CED	BW	WW	YW	MILK	REA	MARB	API	TI
19.6	-6.1	59.5	87.2	23.1	.54	.19	125.4	74



Lot **607**

HIDDEN GEM FARMS

HGF COCONUT

REG: 4602177 | TATTOO: 302N | DOB: 01/10/25 | 3/4 SM 1/8 AN 1/8 CH | **BULL**

ERIXON BITTEN 203A

Sire: SAS COPPERHEAD G354

SAS MISS ARAPHAOE B354

CAJS BLAZE OF GLORY

Dam: MISS CARAMEL

105B

Sired by the proven SAS Copperhead, HGF Coconut carries just the right amount of color and comes loaded with power and presence. He's a true meat wagon, wide topped, bold ribbed, and packed with muscle without giving up structural correctness. He moves with ease and offers the kind of balance and eye appeal that stands out in any program.

CED	BW	WW	YW	MILK	REA	MARB	API	TI
7.8	2.1	85	118.9	18.2	0.68	0.21	105.2	78



Lot **608**

CAMPBELL FARMS

CF BRUISER

REG: 4602294 | TATTOO: 305N | DOB: 01/05/25 | 5/8 SM 3/8 AN | **BULL**

REMINGTON LOCK N LOAD54U

Sire: W/C RAPID FIRE 2101C

MOGCK JILT 2101

FBF1 COMBUSTIBLE

Dam: CF SAVANNAH

CF AURORA

This stand out baldy bull brings together growth, power, and structure integrity in one impressive package. He's thick topped and boldly muscled, carrying mass through his lower quarter and stifle without sacrificing balance. Built on sound sturdy legs and excellent feet he moves with a long east stride that shows his flexibility and longevity. Deep sided, big ribbed, and loaded with performance, this bull combines the look of a herd sire with the kind of growth and muscle that push a calf crop forward.

CED	BW	WW	YW	MILK	REA	MARB	API	TI
7.1	2.3	72.5	115	21.9	0.72	0.17	108.9	69.5



Lot **609**

CAMPBELL FARMS

CF BROWSER

REG: 4602299 | TATTOO: 302N | DOB: 01/02/25 | 3/4 SM 1/4 AN | **BULL**

REMINGTONSECRETWEAPON185

Sire: SSC SHELL SHOCKED 44B

LAZY H SHEZ TOO COOL W58

W/C RAPID FIRE 2101C

Dam: CF SOPHIE

CF SAVANNAH

This bull brings a fresh blend of calving ease and maternal power without giving up the stoutness the breed is known for. He's wide based and rugged with extra shape through his rib and hip yet he maintains a smooth shoulder and refined front end that signal heifer friendly calving potential. His structure correct and practical, built on solid feet and a durable skeleton making him the kind of sire that leaves behind easy doing fertile daughters. Balanced, stout, and back by strong maternal traits, he's a reliable option for building a functional, productive cow herd.

CED	BW	WW	YW	MILK	REA	MARB	API	TI
13.9	-0.6	67.3	101.9	23	0.74	0.09	111	69.2


Lot 610

SIMS CATTLE COMPANY

TSIM TOP GUN 05M

 REG: 4611626 | TATTOO: 2105M | DOB: 12/23/24 | 3/4 SM 1/8 AN | **BULL**

CCR COWBOY CUT 5048Z

Sire: HALLS TOP CUT E18

HALLS BLACKSTAR SHINING

JSUL SOMETHING ABOUT MARY 8421

Dam: TSIMS 2105J

TSIMS 1716E

Top Gun gives off an impressive look from the side and behind, and is flat out powerful. His masculinity and muscle make him appear rugged, but still allows him to move well and flow together. He is out of Halls Top Cut Bull and goes back to SAM on his dam's side. Don't overlook him, as he has a world of future ahead of him and will be a cow making machine.

CED	BW	WW	YW	MILK	REA	MARB	API	TI
12.2	0.2	79.5	127.6	19.1	0.63	0.66	135.2	87.6


Lot 611

SIMS CATTLE COMPANY

TSIM LOVE & WAR 06M

 REG: 4611826 | TATTOO: 2306M | DOB: 12/01/24 | 1/2 SM 11/32 AN 3/32 MA | **BULL**

HTP/SVF DURACELL T52

Sire: THSF LOVER BOY B33

RP/MP RIGHT TO LOVE 015U

SAV BRILLIANCE 8077

Dam: TSIM 2306L

TSIM 2021 I-OAK

One of the farm favorites is this Loverboy son out of a Brilliance daughter. Love & War is a standout, as he is long bodied, extended through his neck and still carries himself very well. He is massive through the center portion of his body, and comes from a moderate cow with a beautiful front end and udder. Here's one to study and do not look past as he is going to be a stud.

CED	BW	WW	YW	MILK	REA	MARB	API	TI
8.4	0.9	70.6	102.8	26.5	0.44	0.35	106.7	74.9


Lot 612

WARDYNSKI LIVESTOCK

AMOS VEGAS VIC M3

 REG: 4368784 | TATTOO: M3 | DOB: 04/29/24 | 3/4 SM 1/4 AN | **BULL**

W/C FORT KNOX 609F

Sire: W/C BET ON RED 481H

W/C ANGEL 7113E

MAR INNOVATION 251

Dam: WLSC VAQUERA E2

HPF/RYAN PERFECTION A452

"Vic" is a shorter statured bull that is heavy muscled and big ribbed. He was supreme champion bull at the Upper Peninsula State Fair. Every judge complimented him on his sound frame and ability to carry the extra weight he processes compared to the larger frame bulls he exhibited against. He has performance and muscling on a wide frame.

CED	BW	WW	YW	MILK	REA	MARB	API	TI
9.9	2	77.3	115	22.6	0.67	0.39	114.6	78.8



MATERNAL GRANDDAM TO LOT 613

Lot **613**

GEN3 GENETICS

GN3/JOHNSON DOUBLE DOWN M83

REG: 4571058 | TATTOO: M83 | DOB: 01/02/24 | 3/8 SM 5/8 AN | **BULL**

W/C EXECUTIVE ORDER 8543B

Sire: W/C DOUBLE DOWN 5014E

W/C MISS WERNING 5014C

SILVEIRAS STYLE 9303

Dam: GN3 ROSE 1J

SH REALITY ROSE 0592

CED	BW	WW	YW	MILK	REA	MARB	API	TI
10.8	-0.5	64.5	98.7	21.4	0.64	0.21	105.1	67.5

If you are looking to add some hybrid vigor to your cow herd while still maintaining attractive sound made cattle this is the bull for you. We believe he can breed for both ways being from the heart of our show program; he will sire attractive well built females and have the extra punch needed to put foot, muscle, and dimension into his male offspring. He is ready to be turned out on cows and with his advanced age can do the work you need without concern.



**THE BREED
THAT DOES IT ALL.**
Simmental.

The Michigan Simmental Association is proud to work with Michigan's breed producers to help build a future for our members and the Simmental breed by uniting those with a passion for Simmental genetics.

We invite you to the 2026 Michigan Beef Expo Simmental Sale on Saturday, February 21 at the Michigan State Pavilion. Sale time starts at 10 a.m. starting with Simmental and ending with Angus. Live online bidding is available at www.cci.live.

Visit our website to get involved and become a member!
www.michigansimmental.org




Lot 614

JB CATTLE CO.

JBCC GOLLY MISS MOLLY

 REG: 4599089 | TATTOO: 55N | DOB: 04/28/25 | PUREBRED | **OPEN HEIFER**

SECOND CHANCE

Sire: TL ON THE RUN

EC COUNTESS

W/C BANK ON IT

Dam: GCC MISS BANK

GCC MISS MOMENTUM

Check out this On The Run purebred heifer she's powerful, good looking, sound and as functional as they come. Tremendously long and material built. Study this one from the ground up.

CED	BW	WW	YW	MILK	REA	MARB	API	TI
1	0.2	64.5	87.5	20.4	0.72	0.08	115.6	70.3


Lot 615

NARROW BROOK FARMS

NBS DAPHNE'S SOMETHING SPECIAL ET

 REG: AR4404564 | TATTOO: 60N | DOB: 04/15/25 | 1/2 SM 1/2 SH | **OPEN HEIFER**

W/C RELENTLESS 32C

Sire: JSUL SOMETHING ABOUT MARY 8421

JBSF PROUD MARY

PET NBS FLYBOY 747 ET

Dam: NBS DAPHNE36A

NBS DAPHNE 036 ET

By the time Expo gets here, this heifer may be our best. Her recip wasn't the best milking, but she has changed daily since weaning. A dual registered, solid red heifer that is long and smooth in her skeletal design, the options are endless here. Note to self... She will always be a Daphne, and she will always be a S.A.M. Remember this when bidding. Quality doesn't cost... it pays! Dual registered percentage Shorthorn.

CED	BW	WW	YW	MILK	REA	MARB	API	TI
9	2.9	60	92	16	0.66	-0.01		


Lot 616

CHERITHBROOK FARM

CBF- NEXT DREAM 2553N

 REG: 4564356 | TATTOO: 2553N | DOB: 04/08/25 | 3/4 SM 7/32 AN 1/32 MA | **OPEN HEIFER**

KRJ DAKOTA OUTLAW 6974

Sire: NEXT LEVEL

KRDL CAEDENCE C37

W/C STYLE 69E

Dam: RJ DREAM MAKER 060J

HARA'S HEARTBREAKER 422B

If you like soft and squishy whale bellied, easy keepers like us, then don't miss this baldy. Out of Caleb's 2022 MI Shows Overall Highpoint Female, this 3/4 Simmental has all the extras to make high end purebreds, or cross her for amazing replacement females. Full and half embryo sibs also sell as choice lot 806 in the Friday Night Lights sale!



FULL SIB TO LOT 616

CED	BW	WW	YW	MILK	REA	MARB	API	TI
6.3	3.8	79.2	113.9	20.4	1.01	0.06	91.7	69.3

Image inverted



Lot 617

GEN3 GENETICS

GN3 GEORGINA 201N

REG: 4621823 | TATTOO: 201N | DOB: 04/03/25 | 1/2 SM 1/2 AN | **OPEN HEIFER**

W/C LOADED UP 1119Y
Sire: BTYL DOC HOLLIDAY 202G
 JS BLACK SATIN 9B
 S&R ROUNDTABLE J328
Dam: JOHNSON GEORGINA 2047
 CHAMPION HILL GEORGINA 7225

This young percentage show heifer prospect has really impressed us since birth. She is sleek fronted and has all the hair you could ask for. 201N is a very laid back female who would be great for any showman. She also combines balance and soundness with plenty of natural body shape and sets down on a stout foot. You just can't go wrong with a female with this kind of pedigree when it blends Champion Hill genetics on the bottom and the great "Boots" cow from the Griswold family on the top side.



SIRE TO LOT 617

Image inverted

CED	BW	WW	YW	MILK	REA	MARB	API	TI
8.2	2.2	72.1	109.8	19.6	0.73	0.27	110.1	71.9



Lot 618

HERBER SHOW STOCK

OUTSIDER 41N

REG: 4559968 | TATTOO: 41N | DOB: 04/01/25 | 3/4 SM 1/8 AN 1/8 MA | **OPEN HEIFER**

SVF/NJC BUILT RIGHT N48
Sire: HECK THE OUTSIDER 64A
 64X
 LLSF VANTAGE POINT F398
Dam: HGF STAR
 B-F BROKERS ROSE 56C

Offering this show broke, stout-made female that is wide based, big-boned, heavy muscled and complete in her composition. She is one we feel will do well in the show ring or any breeding program. She is backed by a maternal dam with a successful show career.

Image inverted

CED	BW	WW	YW	MILK	REA	MARB	API	TI
9.1	1.3	64.2	93.3	16.2	0.61	-0.01	87.2	61.5



Lot 619

3G CATTLE

3GC EMILY N3

REG: 4615984 | TATTOO: N3 | DOB: 04/01/25 | PUREBRED | **OPEN HEIFER**

W/C BET ON RED 481H
Sire: GCC GENOA 2118K
 JS BLACK SATIN 9B
 WLE UNO MAS X549
Dam: 3GC LOADED LADY JJ
 KLLR LOADED LADY 970G

Backed by a strong maternal pedigree, she is very feminine in her make up and very sound when she travels plus she is a baldy, whether you plan on going to the show ring or just looking for a breeding piece, don't miss out on her.

CED	BW	WW	YW	MILK	REA	MARB	API	TI
13.4	-0.4	61.7	87	21.2	0.67	0.17	120.5	72.6



Image inverted

Lot 620
3GC RUBY N4

 REG: 4615983 | TATTOO: N4 | DOB: 03/29/25 | 3/4 SM 1/4 AN | **OPEN HEIFER**

WBF SIGNIFICANT B132

Sire: RUBYS TURNPIKE 771E

RUBYS MISS CLEO 240Z

LONG'S STEEL SHOT

Dam: 3GC SHERRY

C C SHERRY 004

CED	BW	WW	YW	MILK	REA	MARB	API	TI
8.4	2.4	74.4	120.2	32.7	1	0.04	97.6	69.2

Moderate frame with balance depth and natural thickness, she is a broody female that will bring value to your herd for years to come.



SIRE TO LOT 620

3G CATTLE


Lot 621
BATES' NATASHA 503N

 REG: 4582062 | TATTOO: 503N | DOB: 03/24/25 | PUREBRED | **OPEN HEIFER**

W/C BANKROLL 811D

Sire: SJF SMJ PAYROLL

SJF/TVSC CHARLIE

TJSC HAMMER TIME 35D

Dam: BATES'S LOVE 313L

T-T BLACKBIRD D2

CED	BW	WW	YW	MILK	REA	MARB	API	TI
10.1	0.8	71.3	100.1	15.7	0.72	0.06	105.8	72.8

Natasha is a Baldy! Her Dam Love 313L is a maternal sister to our very successful previous show heifers Hope, and Faith and out of one of our most prolific cows D2. Natasha is elegant in her design, with good rib shape, angular and clean fronted.



Lot 622

MARSHALL VISTA LIVESTOCK

NJM STARLET N538

REG: 4550411 | TATTOO: N538 | DOB: 03/16/25 | PUREBRED | OPEN HEIFER

WLE COPACETIC E02

Sire: TJSC COPING WITH DESTINY 9K
TJSC DIAMONDS DESTINY 134C

RBG MR Q FORCE X68

Dam: NJM STARLET H104
STO MS THICK TOP 607D

Sired by the hottest bull in the Simmental breed, Starlet represents what her sire "Cope" is known for. A complete made female with plenty of mass and substance that combines an elegant front third on a flawless structure. Starlet has the performance and genetics to make a top end cow and still looks like a lady. Don't miss this opportunity to add this valuable breeding piece to your herd.

CED	BW	WW	YW	MILK	REA	MARB	API	TI
1.2	2.8	79.7	117.4	18.7	0.83	0.04	109.1	74.3



Lot 623

CHERITHBROOK FARM

CBF- MS PAPARAZZI 2509N

REG: 4564339 | TATTOO: 2509N | DOB: 03/09/25 | 5/8 SM 3/16 AN | OPEN HEIFER

WHF ENTOURAGE H450

Sire: CDNO BOY PAPARAZZO 3L
MISS HWGW GEMMA E30C-G1

JC MR COMRADE 734H

Dam: CBF- COMRADE QUEEN 2302L
CBF- 1908G

Pee-wee showman alert!! This total outcross heifer was a pasture favorite by many visitors last summer. She is thick, clean fronted, soft jointed, big haired and "puppy dog tam" for any size showman.

CED	BW	WW	YW	MILK	REA	MARB	API	TI
10.4	0.8	67.9	98.4	21.5	0.75	0.23	108.8	71



Lot 624

DUBOIS SIMMENTALS

LIL GLORIA

REG: 4602773 | TATTOO: N129 | DOB: 03/06/25 | PUREBRED | OPEN HEIFER

OMF EPIC E27

Sire: SCHOOLEY STANDOUT 27G
CLRS BEAUTY QUEEN 420 B

MISTER TUB TUB

Dam: LIL BROWNIE
BROWNIE

This attractive, long-bodied purebred Simmental heifer combines eye appeal with performance genetics. Sired by the popular bull Standout, she offers a strong blend of muscle shape, structural correctness, and a balanced, feminine design. Her level topline and sound foot and leg structure make her the kind that will hold up and stay productive. She exhibits the kind of brood cow look that Simmental breeders demand: easy fleshing, docile in nature, and built to thrive in a variety of production settings. With her sire's influence, Gloria projects maternal strength and long-term value, making her an excellent addition for programs focused on quality replacements or future donors.

CED	BW	WW	YW	MILK	REA	MARB	API	TI
6.9	1.8	73.6	109.1	18.3	0.82	0.26	126.2	78



2025 NAILE DIVISION 2 CHAMPION BRED & OWNED HEIFER

Lot 625

BATES FAMILY LIVESTOCK

BATES' NIKKI 502N

REG: 4512631 | TATTOO: 502N | DOB: 02/19/25 | 1/2 SM 1/2 AN | OPEN HEIFER

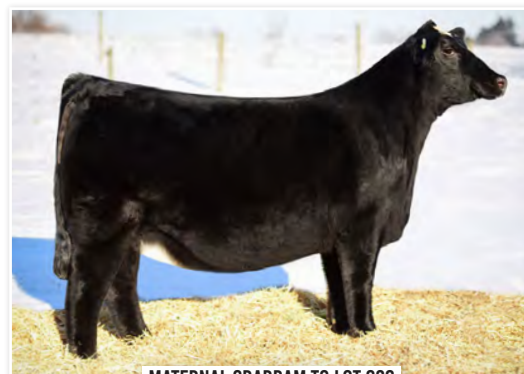
CED	BW	WW	YW	MILK	REA	MARB	API	TI
7	2	79.8	112.6	19.3	0.8	0.3	111.3	76.5

Sire: PVF INSIGHT 0129
PVF BLACKLIST 7077
PVF BLACKBIRD 3070
VCL FORESIGHT
Dam: TL ROXANNE 19L
DAJS MS ROXANNE 126

Nikki is the 1st calf out of a heifer we purchased from Tree Lane Farms and out of their very popular Roxanne cow known as 716. Nikki was shown at the NAILE and placed 1st bred and owned in her class and DIV 2 Champion Bred and Owned heifer, she was 2nd in her class in the open show. Nikki is very stylish, well balanced out of great cow and sire families.



Image inverted



MATERNAL GRADDAM TO LOT 626

Lot 626

GEN3 GENETICS

GN3/SRC NATALIE L11N

REG: 4621822 | TATTOO: L11N | DOB: 02/12/25 | PUREBRED | OPEN HEIFER

CED	BW	WW	YW	MILK	REA	MARB	API	TI
8.7	1.7	81.4	114.2	16.9	0.89	-0.05	107.3	75

Sire: W/C DOUBLE DOWN 5014E
WHF/JS/CCS DOUBLE UP G365
WHF SUMMER 365C
HPF QUANTUM LEAP Z952
Dam: PVF/SRC LUCY
HFSC FOXY LADY HF6

Everything clicked with this mating to make this nice Double Up purebred female. She brings power, dimension, and rib shape while still maintaining a balanced look and attractive profile. L11N is backed by proven cow families on the top and bottom with her granddam being the popular Style daughter HFSC Foxy Lady HF6. If you are looking for a female to have a big impact in your program don't skip over this one on sale day.



SIRE TO LOT 627

Lot 627

FINEGAN FARMS

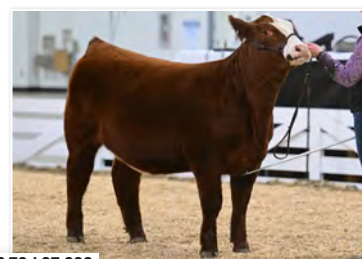
SSSL KATE

REG: 4586874 | TATTOO: N03 | DOB: 02/08/25 | PUREBRED | OPEN HEIFER

Sire: SO REMEDY 7F
SO REMNANT 418J
STCC MS PERSISTANT 7161
W/C BULLSEYE 3046A
Dam: KATHRYN J01
DJM KATRINA D613

CED	BW	WW	YW	MILK	REA	MARB	API	TI
13.9	0.3	76.7	114.5	17.6	1.05	-0.09	117	74.9

SSSL Kate is a full-bodied, complete female that has great potential as a cow prospect. She is long-sided, easy-fleshing, and has good feet and legs. And coming from a long line of tremendous cow power that milk well, she has incredible genetics to back her. In addition, she has a VERY pleasing disposition, which would make her a perfect prospect for a beginning youth looking to build their own herd.



MATERNAL SIBS TO LOT 628

Lot 628

MARSHALL VISTA LIVESTOCK

NJM DESA RAE N51

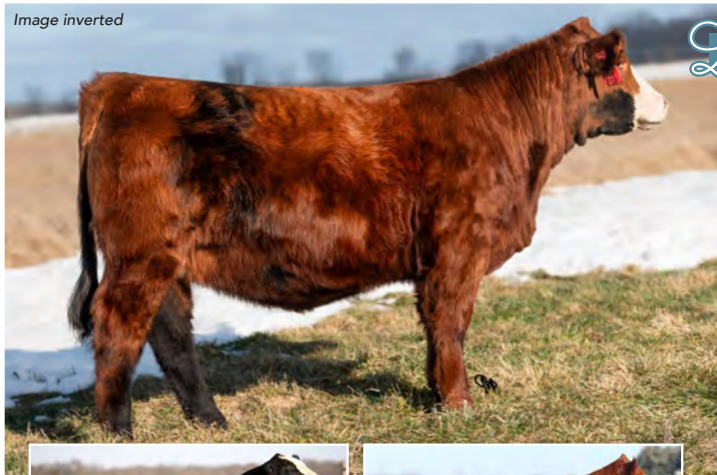
REG: 4620996 | TATTOO: N51 | DOB: 01/29/25 | PUREBRED | OPEN HEIFER

Sire: W/C LOADED UP 1119Y
W/C BANKROLL 811D
MISS WERNING KP 8543U
STF DOMINANCE T171
Dam: STF 42LZ
HPF MS DESA RAE U337

CED	BW	WW	YW	MILK	REA	MARB	API	TI
9.8	1.5	71.3	104.3	18.9	0.75	-0.01	115.2	70.9

Desa Rae N51 is the combination of timeless genetics being a direct daughter of Bankroll whose semen is valuable and hard to find. Her dam was our selection of the Silvertowne Farms dispersal and has consistently produced our top calves regardless of sire. Multiple sisters have topped sales for us the past few years including top open females at the Bred for Success sale and Kentucky Beef Expo selling to Texas. This red baldy will catch your eye with her complete and stunning phenotype and develop into a top cow that will pay dividends for years to come.

Image inverted



SIRE TO LOT 629



DAM TO LOT 629

Lot 629

WOOD CATTLE

AW BIG DEBORAH 518N

REG: 4584989 | TATTOO: 518N | DOB: 01/28/25 | PUREBRED | OPEN HEIFER

HPF/HILL UPRISING C104

Sire: LLSF DAUNTLESS K07
TJSC ONYX 44B

Dam: W/C EXECUTIVE ORDER 8543B
HILB MISS VERSACE E57C
AJE MS CHANEL Y32

An own daughter of Hilb Miss Versace E57C, the dynamic red head from Hilbrands! This young lady is easy going, easy keeping and easy to fall in love with. Her sire LLSF Dauntless is just picking up steam as a producer of great females. If red baldy heifers like this one don't get your heart going then nothing will.

CED	BW	WW	YW	MILK	REA	MARB	API	TI
10	1.7	74.9	111.3	17.8	0.62	-0.06	103.2	71.3

Lot 630

N/S CATTLE

N-S NASH'S 31 SHELL SHOCKED

REG: 4553514 | TATTOO: N31 | DOB: 01/22/25 | 5/8 SM 3/8 AN | OPEN HEIFER

REMINGTON SECRET WEAPON

Sire: SSC SHELL SHOCKED 44B
LAZY H SHEZ TOO COOL

Dam: NASH'S RELENTLESS
NASH'S 31-3 RELENTLESS
NASH'S 31-1

Here is a really functional baldy SimAngus female. Being a W/C Relentless Shell Shocked cross the genetic potential is endless!



CED	BW	WW	YW	MILK	REA	MARB	API	TI
15.5	-1.6	63	94.6	20.9	0.64	0.24	113.4	71.5

Lot 631

FILHART FAMILY FARM

MISS HALLELUJAH 2517

REG: 4615853 | TATTOO: 517N | DOB: 01/18/25 | PUREBRED | OPEN HEIFER

CNS PAYS TO DREAM T759

Sire: LLSF PAYS TO BELIEVE ZU194
LLSF URABABYDOLL U194

Dam: MR HOC BROKER
HILB HALLELUJAH C4620
SS BABYS BREATH P035

This Pays to Believe heifer is thick made with plenty of bone and a lot of eye appeal. This baldy heifer can be bred to throw you some fancy show stock or to raise front pasture replacement heifers. Don't let this one slip away.



Image inverted

CED	BW	WW	YW	MILK	REA	MARB	API	TI
8	2.8	72.4	103.4	19.3	0.85	0.06	110.6	71.4



Lot 632

CAMPBELL FARMS

CF ECLIPSE

REG: 4602296 | TATTOO: 311N | DOB: 01/16/25 | PUREBRED | OPEN HEIFER

REMINGTON LOCK N LOAD54U
Sire: DMCC/WOOD FULLY LOADED 39D
 AUBREYS BLACK BLAZE III
 SSC SHELL SHOCKED 44B
Dam: NASH'S TOOHEY
 NASH'S BUNNY

This striking baldy heifer is the perfect blend of femininity, eye appeal, and real world muscle. Long fronted and smooth made, she carries herself with the kind of elegance that turns heads, yet she backs it up with a powerful hip, bold rib, and the structure correctness needed for long term productivity. Attractive from every angle and built with the kind of balance that never goes out of style, she's a stand out female with the look of a future brood cow and the mass to raise heavyweight calves.

CED	BW	WW	YW	MILK	REA	MARB	API	TI
14.6	-0.8	69.5	101.8	16.8	0.82	0.17	125.7	77.7



Lot 633

BATES FAMILY LIVESTOCK

BATES' JEWEL'S NOEL 501N

REG: 4582061 | TATTOO: 501N | DOB: 01/09/25 | PUREBRED | OPEN HEIFER

W/C RELENTLESS32C
Sire: JUSL SOMETHING ABOUT MARY 8421
 JBSF PROUD MARY
 DMCC/WOOD FULLY LOADED 39D
Dam: BATES' ANGEL'S JEWEL 100J
 WHF ANGEL'S ENVY 250F

Noel is the full sister to our class winning and 10th overall bred and owned heifer at the 2025 Simmental Jr. Classic. This red heifer has as more rib and power than any purebred we have ever raised. She is wide based, big boned and has a smooth tailhead. You will have many options in mating this heifer.



FULL SIB TO LOT 633

CED	BW	WW	YW	MILK	REA	MARB	API	TI
8.3	1.4	78.9	118.8	11.9	0.96	0.04	112.2	76.1



Lot 634

FILHART FAMILY FARM

REFF MISS COUNTY O 2507

REG: 4615851 | TATTOO: 507N | DOB: 01/01/25 | 3/4 SM 1/4 AN | OPEN HEIFER

W/C LOADED UP 1119Y
Sire: GEFF COUNTY O
 RUBY NFF RHYTHM 475B
 J BAR J NIGHTRIDE 225Z
Dam: REFF 1901
 REFF MISS DAISY

Here is a 3/4 Simmental County O heifer that is a bold-ribbed, soft made female with lots of rib. She is an easy-keeper weaning off at 645 pounds without any creep feed. Her 1/2 sister sold here last year and, we think this one is better.

CED	BW	WW	YW	MILK	REA	MARB	API	TI
9.7	1	70.6	110.3	16.3	0.91	0.29	112.6	73.9



Confirmed Pregnant!

AI DATE: 6/9/25 | SIRE: KG JUSTIFIED 3023 | REG: 17707279 | DUE DATE: 03/16/25

CED	BW	WW	YW	MILK	REA	MARB	API	TI
7.8	2.3	72.4	104	15.9	0.69	0.13	112.4	73.7

Lot 635

TULULA

REG: 4384538 | TATTOO: M50 | DOB: 04/18/24 | 3/4 SM 1/8 AN | **BRED HEIFER**

CONNEALY JUDGEMENT

Sire: HLB ORACLE

KG MISS MAGGIE

TLLC ONE EYED JACK

Dam: IFM DAISY

1782

Tulula is bred to the calving ease Angus bull KG Justified for her first calf. She is a One Eyed Jack out of a Cowboy Cut and can be bred for show or commercial to make beautiful heifers or steers. Her mother is a beautifully uttered, deep bodied brood cow. Her pedigree allows her to be bred for show or make great replacements. Tulula has enough chrome to make beautiful show steers and will be a great addition to any herd.



Confirmed Pregnant!

SIRE: KG JUSTIFIED 3023 | REG: 17707279 | DUE DATE: 3/16/2026

CED	BW	WW	YW	MILK	REA	MARB	API	TI
13.3	0.2	73.8	106.2	23.2	0.69	0.1	126.5	77.4

Lot 636

SADIE

REG: 4385594 | TATTOO: M20 | DOB: 04/09/24 | 3/4 SM 1/4 CS | **BRED HEIFER**

REMINGTONSECRETWEAPON185

Sire: SSC SHELL SHOCKED 44B

LAZY H SHEZ TOO COOL W58

CCR COWBOY CUT 5048Z

Dam: COWGIRL CUT

1525

Sadie stems from a long time AI commercial program. Her Cowboy cut mother is a beautifully uttered deep body brood cow. She is very maternal and can be successfully bred for show, replacements, or feeders. She is bred to a calving ease Angus bull for her first calf.



Image inverted

AI DATE: 12/1/25 | SIRE: GCC NIGHT OWL 3104L | REG: 4284092

NATURAL SERVICE EXPOSURE: 12/15/25-1/30/26 | SIRE: CCATCO EXECUTIVES CUT | REG: 4240231

CED	BW	WW	YW	MILK	REA	MARB	API	TI
9.1	0.8	62.1	88.4	22.1	0.6	3	104.2	68.2

Lot 637

NASH'S CS KG

REG: 4392783 | TATTOO: M43 | DOB: 02/15/24 | 1/2 SM 3/8 AN 1/8 AR | **BRED HEIFER**

W/C RELENTLESS 32C

Sire: NASH'S RELENTLESS

A 895

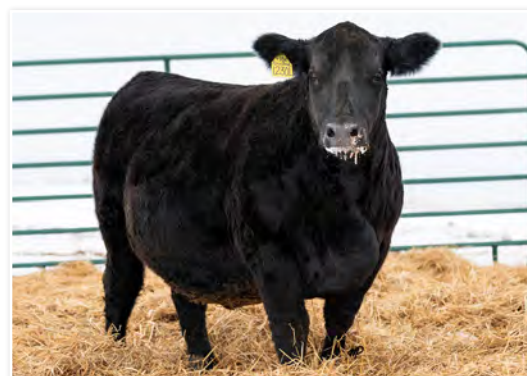
W/C PINNACLE E80

Dam: NASH'S CS CURLY

NAH'S BIG RED 43

This is a maternal practical bodied female that exceptionally docile and show broke; her added volume and capacity are noted in a complete well-balanced pattern. All while traveling on structurally correct framework. AI Bred to the Night Owl bull and exposed to CCATCO Executives Cut.

Confirmed Pregnant!



Lot **638**

DELONG CATTLE COMPANY

JDCC ROSE BOWL 1230L

REG: 4520518 | TATTOO: 1230L | DOB: 12/30/23 | 3/4 SM 1/4 AN | **BRED HEIFER**

AI DATE: 5/19/25 | SIRE: CNS DREAM ON L186 | REG: 2144976 | DUE DATE: 02/25/26

CED	BW	WW	YW	MILK	REA	MARB	API	TI
8	1.1	86.1	129.1	28.9	0.35	0.26	123	81.9

HTP/SVF DURACELL T52

Sire: THSF LOVER BOY B33

RP/MP RIGHT TO LOVE 015U

TJ SHARPER IMAGE 809U

Dam: RC MISS IMAGE 433Z

RC MISS OBJECTIVE 011U

Here is a THSF LOVER BOY daughter out of a Sharper Image cow that has proven time and time again to make great ones. This bred has been impressive to watch and will be great in the future. This heifer has been serviced to Dream On on 5/19/2025 and confirmed on 8/8/2025.



A Lasting Legacy **ROBERT DELONG**

Robert DeLong's impact on the Michigan Beef Expo and Michigan's cattle industry is woven into the foundation of the event we know today. A dedicated exhibitor, leader, and advocate, Robert began consigning cattle and serving on the Beef Expo Committee as a breed representative in 2015, the same year he exhibited the Overall Supreme Champion Female. His success in the ring continued with the Grand and Reserve Champion Simmental Females in 2018, but his greatest contributions were made through his leadership. Serving as committee chair for two years, Robert worked tirelessly to strengthen the Expo, always focused on its future and the long-term success of the beef industry.

Beyond the Expo, Robert was a respected leader across Michigan agriculture. He joined the Michigan Cattlemen's Association in 2010, served on its board beginning in 2020, and was recognized as Commercial Cattleman of the Year in 2016 and MCA Member of the Year in 2024. Known for his welcoming presence and passion for mentoring youth, Robert's legacy continues through the Paul DeLong Scholarship, supporting local 4-H and FFA members.

Robert's vision, dedication, and genuine love for the industry will continue to guide the Michigan Beef Expo and those who carry its mission forward.

Confirmed Pregnant!



Lot **639**

AI DATE: 6/30/25 | SIRE: CNS DREAM ON L186 | REG: 2144976 | DUE DATE: 04/08/26

CED	BW	WW	YW	MILK	REA	MARB	API	TI
14.2	-0.9	70.3	100.9	19.4	0.96	0.05	123.7	75.5



SIRE TO LOT 639

DELONG CATTLE COMPANY

JDCC BANKROLL 1206L

REG: 4520519 | TATTOO: 1206L | DOB: 12/06/23 | PUREBRED | BRED HEIFER

W/C LOADED UP 1119Y

Sire: W/C BANKROLL 811D

MISS WERNING KP 8543U

W/C EXECUTIVE ORDER 8543B

Dam: SC TIMELESS E137

REW/SS TIMELESS T20

Here is a W/C Bankroll daughter out of a W/C Executive Order cow that is one of our favorites here at DCC. This bred has been impressive to watch as she has matured and made her way towards the top of the bred pen. We cannot wait to see how this bred turns out for her future home. This heifer has been serviced to Dream On on 6/30/2025 and confirmed on 8/8/2025.

Confirmed Pregnant!



Lot **640**

NATURAL SERVICE EXPOSURE: 5/20/2025 - 6/15/2025 | SIRE: BMW DRIVING NORTH 162L
REG: 550333 | DUE DATE: 3/11/2026

CED	BW	WW	YW	MILK	REA	MARB	API	TI
11.4	0.5	58.2	88.4	17	0.64	0.1	88.7	62.1



MATERNAL GREAT GRANDDAM, JR QUEEN BEE WITH MATERNAL GRANDDAM, JR BEE GOOD AS A CALF AND 5TH OVERALL PAIR AT 2012 SIMMENTAL JUNIOR NATIONAL

JUDGE FAMILY SHOW CATTLE

MISS KERRY

REG: 4621779 | TATTOO: 100K | DOB: 04/04/22 | 1/2 SM 5/16 MA | BRED COW

KBSC SIMPLIFY 22C

Sire: LLW CARD SIMPLIFY 436F

LLW CARD ERROLINE'S CANDY 436D

LLSF UPRISING Z925

Dam: JR KERRY D29

JR BEE GOOD

Miss Kerry is a proven, dual registered (percentage Simmental and Mainetainer) cow whose dam originated from JR Simmentals. The Bee Good line produced multiple champions and is known for their cow power. She is moderate, easy fleshing, sound and good to look at. Safe in calf to BMW Driving North. With an expected ultrasound due date of 3/11/2026; this is a quick return on your investment! Calf can be registered as 1/4 Simmental and 5/8 Mainetainer.

Supporting *your growth.*

We're proud to provide the farmers and agribusinesses in our community with the financial services necessary to help them grow their operations, and we're ready to do the same for you.

With locations across Michigan and northeast Wisconsin, we're here when you're ready to talk.

800-444-3276



GreenStone®
FARM CREDIT SERVICES

www.greenstonefcs.com

Become BQA Certified!

Attend one of the upcoming Michigan Beef Quality Assurance trainings in partnership with Michigan Beef Industry Commission, Michigan State University Beef Team & Michigan Cattlemen's Association!
Certifications are free and open to everyone! Registration is required.

March 17th: MSU Extension Office in West Branch, MI

April 22nd: Bay College in Escanaba, MI

September 24th: MSU Extension Office in Allegan, MI

November 10th: Farm Bureau Pavilion in Lansing, MI



Meetings will begin at 6 P.M with dinner

Scan here to register or visit
micattlemen.org



MSU Extension



SALE MANAGER:
Brandon Goering
(419) 551-5461

BREED REPRESENTATIVE:
Mary Seidelman
(616) 260-3594

NARROW BROOK FARMS
Matt & Tara Miller
2685 E Bellevue Hwy
Charlotte, MI 48813
(517) 749-8187

RED ROCK LIMOUSIN
Mary & Phil Seidelman
5584 Stedman Rd.
Ionia, MI 48846
(616) 260-3594

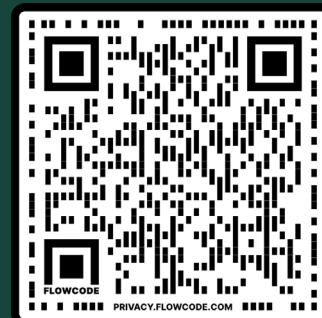
MCA-MSU BULL EVALUATION PROGRAM

9441 50TH AVE
REMUS, MI

Open House
March 7th, 2026
Live Sale
March 21st, 2026

*Also hosted online at DVAuction.com

Scan here to learn more about
our bull program!



We do more, so you know more.

The Michigan Cattlemen's Association & Michigan State University Bull Evaluation Program is the region's premier central bull appraisal program and facility. The program is a cooperative effort among MCA, MSU, and Wernette Cattle Co. Working together to evaluate young bulls for rate of gain, feed efficiency, soundness, and body composition. Helping producers obtain superior bulls that have been evaluated for growth, breeding and structural soundness, and carcass merit. We look forward to seeing you in March!



Lot 701

RED ROCK LIMOUSIN

ROCKS NELSON

REG: NXM3522103 | TATTOO: MMGS 334 N | DOB: 02/26/25 | 79% LIMOUSIN | **BULL**

MAGS WINSTON

Sire: MAGS AVIATOR

MAGS XTRA REST

LFLC CHECKING ACCOUNT

Dam: ROCKS GIRL - LEE
ROCKS EVIE

Everyday I tell this bull how gorgeous and studly he is. The depth, thickness and shape of his whole being is phenomenal. He will be a highly versatile bull with calving ease and added growth for the feed lot. A snap to halter break; his gentleness will pass onto his brood. Your girls will love him. BW 76# Adj WW 851#. His maternal brother was my red 2022 Beef Expo bull "Jack" another looker. Index value of 71.65



MATERNAL SIB TO LOT 701
AND 2022 MBE CONSIGNMENT, JACK

CED	BW	WW	YW	MILK	REA	MARB
12	0.2	62	94	25	0.47	-0.02



Lot 702

RED ROCK LIMOUSIN

ROCKS NORMAN

REG: NXM3522101 | TATTOO: PMCS 330 | DOB: 02/08/25 | 68% LIMOUSIN | **BULL**

HUNT CREDENTIALS

Sire: COLE GENESIS 86 G

COLE MISS XRATED

LFLC BANK ACCOUNT

Dam: 3G COWGIRL JELLY
3G COWGIRL ZOLA

Norman, a carcass bull that will help in making your calving season a success with his CED Value of 16 and - 1.1 BW. He is very quite and was a snap to halter break; this docility will transfer onto his calves. He will make replacement heifers that will milk and raise calves with a Milk value of 29 and a TM of 62. If you need a production boost or want to maintain your high production standards. Norman is the bull you will want. BW 65# WW ADJ 848#. Index Value of 106.36

CED	BW	WW	YW	MILK	REA	MARB
16	-1.4	66	98	29	0.56	0.19



Lot 703

NARROW BROOK FARMS

NBS MIZ BUTTERWORTH

REG: AR4404192 | TATTOO: 692N | DOB: 04/12/25 | 37.5% SH | **OPEN HEIFER**

Sire: HUNTER BIDEN'S LAPTOP

NBS FRAZIER A36F

Dam: NBS JOZEE 692K
NBSC JOLIE 692F

There is Frazier semen selling in the Friday Night Light's Sale and this is the kind of cattle his daughters produce! Hunter Biden's Laptop has made this butterscotch heifer, backed by a cow family, three generations deep, still on our farm, that traces back to a Endsley Charolais purchase we made years ago. This heifer fits the maternal pattern we strive for at Narrow Brook. What ever direction you take for her, she will make a path worth following. She is a 37.5% Shorthorn and can be shown as an AORB.

CED	BW	WW	YW	MILK	REA	MARB
5	3.3	46	67	16	0.37	0.1

Notes



Watch the Sale "Broadcasting Live" on cci.live!

www.CCI.live - Live Online Bidding
(405) 400-9505 Text/Call - schedule@cci.live
Find us on the App Store and Google Play
Over 35 years in livestock marketing!

SE

AGRICULTURAL
& COMMERCIAL
SOLUTIONS





www.seagcom.com

CONSTRUCTION

EQUIPMENT

SALES & MANAGEMENT



Specializing in cattle housing & equipment!

BEEF IT'S WHAT'S FOR DINNER.®

Your Slogan. Your Investment. Your Future.

THROUGH PROMOTION,
RESEARCH AND EDUCATION,
YOUR CHECKOFF IS KEEPING
BEEF WHERE IT BELONGS:
CENTER OF THE PLATE.

www.mibeeff.org



MARCH 14

CLARE, MICHIGAN AT 1:00 PM ET
JC Simmentals Sale Facility

16TH ANNUAL BULL SALE



SIMANGUS - G A R TRANSCENDENT SON



PB SM - LBRS GENESIS G69 SON

MULTI-GENERATIONS GENOMIC TESTING || RIGHTMATE AND RIGHT CHOICE
CUSTOMER FEEDER CATTLE MARKETING OPTIONS || DEVELOPED RIGHT SO THEY LAST FOR YOU

120 Powerhouse Yearling
SimAngus™ & Simmental Bulls
3 Elite Open Heifer



Catalog requests and reasonable delivery arrangements anywhere in the US,
contact John Miller, 989-429-2834 or john@jcsimmentals.com
For more information, visit www.jcsimmentals.com

Great Lakes Beef Connection:
John Miller, JC Simmentals 989-429-2834
Andy Salinas, Salinas Farms 231-245-6750
Steve Oman, SD Simmentals 989-429-3600
Brian Harris, Green Valley Farm 517-749-4117

Bid Live Online **DVAuction**

ALLIED
GENETIC RESOURCES
Marty Ropp 406-581-7835
Corey Wilkins 256-590-2487
Jared Murnin 406-321-1542
alliedgeneticresources.com

Michigan Cattlemen's Association
2163 Jolly Road
Okemos MI, 48864

