

Hanel's Black Simmentals

THE 8TH ANNUAL BULL SALE

MARCH 2, 2026 IN COURTLAND, KANSAS AT 1:00 PM

HANEL'S BLACK SIMMENTALS

Welcome to the 8th Annual Hanel's Black Simmentals Production Sale. Having sold bulls for 20 years through private treaty, we are excited to share the opportunity to buy into our Simmental program that we have been building over the past 25+ years.

Our cattle epitomize performance and have a proven history to produce a consistent calf crop year in and year out. We produce honest, hard-working cattle that are raised without any creep feed to show the true performance and function. Our cows spend most of the winter running out on stock fields right along with their calves and are raised as much like a commercial operation as we can and are asked to work for us.

This year there will be 122 Simmental, SimAngus, SimChar, Angus bulls and 24 open replacement heifers in the offering. Every animal selling in this offering will enhance your bottom line with increased performance and carcass traits. Field Cattle Company also has a tremendous set of power real world bulls and we are excited for them to sell with us.

This operation has the upmost respect for our cattle and our beef industry. When you lay eyes on our operation you will see that in seconds, and we expect that out of our genetics! With Mother Nature starting to spread some moisture across the United States and with the lower number of cattle the future seems extremely bright for the cattle industry. These bulls selling are exactly what the beef industry is asking us as producers to utilize to enhance our operations to the next level. This set of bulls will rival any set of bulls across the entire world.

These bulls will add pounds to your calf crop and are among the top bulls to sell this spring for carcass quality for the represented breeds. These bulls will add value to you calf crop no matter how you market your calf crop. Please let me know before you sell calves out of these bulls so I can assist in the marketing process to insure you get top market value for your calf crop. The harvest data from theses genetics is second to none. Order buyers and feed yards are always asking me when they can get a chance to buy more of our genetics. I invite you out to the ranch to look at our offering and join us for a steak lunch before the sale. I hope to see you on sale day Monday, March 2, 2026.

Also, mark your calendar for the 9th Annual Production Sale on Monday, March 1, 2027!

Thank you for your interest,

Brock Hanel, DVM



The Hanel Family





Hanel's Black Simmentals is a generational seedstock firm with strong ties to multiple facets of the beef cattle industry. Professionally, Dr. Hanel is one of the very best large animal veterinarians in the business. The clinic's customer base is extremely diverse, as he provides services to some of the elite seedstock firms in the nation, some of the largest commercial cow calf operators in the region, major cattle feeding entities, and some of the very best progressive auction markets in north central Kansas. To say that he is well connected is an understatement, as his industry information resources are significant and hold as much relevance as any network in the business.

Brock's industry outreach is impressive, and his willingness to support those who support the HBS brand is genuine. He wants to feed the cattle sired by these bulls and the ones we have marketed before. Those who sign the front of a check on the first Monday of March are very aware of the return when they do business with the good doctor, and that's what keeps them coming back. The words spoken from his mouth and the handshake after the agreement are as good as any ink on paper. Customer service is not just an act; it's a passion, and every customer is taken care of with a compromise in their favor, not his.

The commitment to genetic improvement is real at Hanel Black Simmentals. Brock scours the country annually for the next source of genetics that meets his criteria. Already in 2026, the firm has made two serious herd sire acquisitions featuring genomically enhanced data and fresh genetics outside the pedigree lines of the existing cowherd in Courtland, Kansas. His concern for his customers' success and profitability is the driving force, as he understands that your success is his success, and your business loyalty remains with the program that provides the genetic resources you need to continue advancing your herd's genetic potential.

The industry's demand for heavier cattle on the rail is legitimate, given the supply chain shortage. Hanel has always focused on breeding cattle that will meet industry mandates. As outlined, heavy cattle with product resulting from efficient, low-input gains are the optimal goal for any production model, and that model is constantly tweaked by Brock through improved management protocols and genetic acquisitions.

Cattlemen and women, if you have not shopped for your next herd sire(s) at Hanel's Black Simmentals, we encourage you to do so on the first Monday of March 2026. If you are a repeat, loyal customer, you know what the cattle are capable of and where to be and when. The steak lunch is a staple and very well attended. Hospitality will be a close second to the meal, but your attention and interest in the offering will be program-changing if you have the opportunity to do business with the outstanding family. If you should need any additional information or assistance with selection and sight unseen purchasing, please feel free to reach out to any of the Innovation AgMarketing team for any and all needs.

Thank you for your interest and enjoy the cattle,

Graham Blagg Jered Shipman Tim Anderson



SALE LOCATION

Hanel's Black Simmentals
340 US-36 - Courtland, KS 66939

SALE DAY PHONES

Brock Hanel 785-275-1060
Braden Field 785-577-1924

SALE MANAGEMENT

INNOVATION AGMARKETING
Graham Blagg 530-913-6418
Jered Shipman 806-983-7226
Tim Anderson 605-682-9343

AUCTIONEER

Col. Jered Shipman 806-983-7226

RING STAFF

Craig Talkington, Special Assignment 785-623-1789
Mitchell Armitage, Special Assignment 405-641-9438
Brett Sayre, Special Assignment 573-881-1876

CONSULTANTS

Neil Bouray 402-879-5566
Zach Sumpter 785-545-6175

LIVESTOCK MORTALITY INSURANCE

Sheila Jensen 785-262-1116

ACCOMMODATIONS

Holiday Inn Express & Suites Concordia 785-243-2700

VETERINARIAN

Hanel Vet Clinic 785-374-4550

VIDEO PREVIEW OF SALE CATTLE

Videos of the sale cattle available online the week prior to the sale.

TERMS & CONDITIONS

All cattle will sell under the terms and conditions of their respective breed association. All sales are final.

ANNOUNCEMENTS

A supplement sheet will be available sale day with updated information, corrections, and additional information. This sheet and any announcements made sale day, from the auction block during the sale, will take precedence over printed material associated with the sale. Anyone attending this sale attends at their own risk. Hanel's Black Simmentals or the sales team will not be held responsible for any personal injury from attending this sale.

VIDEO AUCTION

All cattle will sell while being viewed on large screen monitors in the sale facility. There will be multiple large screens playing videos of the animals while the respective animal is being auctioned. Cattle will not come into the sale ring during the auction and we will not travel through equipment during the auction. Please make plans to arrive early and preview the sale offering prior to selling.

TRUCKING

The sales team will be able to help you with transportation for your cattle purchases. We will also have professional transporters available sale day.

AIR TRAVEL

Wichita Airport - 2 hours and 30 minutes from sale site
Kansas City International Airport - 3 hours and 20 minutes from sale site

SALE BOOK PREPARED BY

J.Maree Designs, Jeana Hurlbut - 605-880-7601

PHOTOGRAPHY

Noll Ernst 641-414-0404

VIDEOGRAPHY

Ideal Video Productions
Wade Fischer 254-319-5349

ONLINE BROADCAST

Wyatt Durst, CCI.LIVE 785-541-0904



Bid Live Online

www.CCI.live - Watch the Sale

(405) 400-9505 Text/Call - schedule@cci.live
Find us on the App Store and Google Play
Over 35 years in livestock marketing!

SALE SCHEDULE FEBRUARY 28 & MARCH 1

Cattle on display all weekend prior to the sale.

MARCH 2, 2026

Cattle on Display - 9:00 AM

Steak Lunch Served - 12:00 PM

**HANEL'S BLACK SIMMENTALS
8TH ANNUAL BULL SALE - 1:00 PM**

Thank you to our Meal Sponsors!



MERCK
Animal Health

zoetis



**Boehringer
Ingelheim**



**Animal Health
INTERNATIONAL**

BULL GUARANTEE

Unless otherwise noted, all the breeding age bulls will have passed a breeding soundness exam prior to pick up/delivery. In addition to the standard Terms and Conditions of the American Simmental Association and the American Angus Association we will provide the first breeding season (the 90-day period immediately following turn out) guarantee on all yearling and older bulls. This guarantee is not an insurance or mortality policy, but a guarantee on functional fertility. It is not a substitute or replacement for poor management. Buyer assumes all risks for injury due to running bulls together or management decisions outside genetic control. For the guarantee to apply, we ask that you contact us as soon as a condition is observed and before the animal is sold. We will work with you to determine whether the animal is returned or sold for slaughter. We will attempt to provide a suitable replacement. If one cannot be provided of equal or greater value, we will issue a sale credit to be used in a future sale for the full purchase price less the salvage value of the animal.

SIGHT UNSEEN PURCHASES

We guarantee all sight unseen purchases. Call ahead and we will go over the bulls and try to match you up with the bull(s) that best meet your operation's needs. You can leave a bid with Brock Hanel or any member of the Innovation AgMarketing, LLC sale management team. We know our cattle and strongly recommend that you call and visit with us on all sight unseen purchases.

VOLUME DISCOUNT

Purchase 5 or more Bulls and receive 5% off your total purchase price.

SEMEN INTEREST

Retaining 1/3 semen interest in all bulls selling, unless otherwise noted or announced.

TRUCKING

Free delivery within 200 miles and \$50 sale credit if bull purchase is picked up the day of sale. Otherwise, please contact the sales team for assistance with transportation for your cattle purchases. We will work with volume buyers and those outside the 200-mile delivery range. Dick Coleman is an approved and recommended professional trucking option. (765) 461-0954.

GENETIC TESTING

All bulls will sell with genomically enhanced EPDs and are parent verified. We have submitted DNA on every bull selling to aid you in the decision making process that goes hand in hand with buying your next herd sire!



- One lucky buyer will receive an all-expense paid trip to Garrison, North Dakota!
- 3 nights of lodging with 2 days of guided fishing for up to 4 people!
- Experience the opportunity to fish the beautiful Lake Sakakawea!
- Lodging provided in Garrison, North Dakota!

BIG MUDDY GUIDE SERVICE

Garrison, North Dakota
www.BigMuddyGuide.com



Real World **BEEF CATTLE**

- No hoof trimming EVER at Hanel's Black Simmentals!
 - No creep feed!
- Cows run on grass and stock fields!
- All cattle are electric fence broke!
 - All cattle are cube broke!
 - All cattle are bale bed broke!
- Hanel's Black Simmental genetics will add pounds to your program and those pounds will pay you regardless of how you market your cattle!
 - All cattle have genomic data on file!



Hanel's Black Simmentals
THE BULL OFFERING



THE LAWMAKER SIRE GROUP

Lot 1



- A special way to initiate the 2026 edition of the Hanel's Black Simmentals Production Sale with a truly unique individual that is sired by the \$32,000 high selling bull from the 2024 Hanel's Black Simmentals Production Sale. Hanel's Lawmaker L3010 was purchased by Matt Beach and Zane Wicks, two great cattlemen that identified his quality both phenotypically and genomically.
- N5000 is a tremendous three-quarter blood SimAngus stud that is backed by a tremendous first calf heifer dam sired by Hook's Eagle 6E. The maternal side of his pedigree traces to the influence of the iconic CCR Cowboy Cut 5048Z and the highly proven KSU Miss Shear Force 6Z.
- A homozygous black and polled stud that is so long bodied, smooth shouldered, sound footed, and shapely from every angle. He is the NUMBER 1 weaning weight bull in the sale with an impressive 840 lb. adjusted weaning weight, which recorded a WWR at 120! He is a true curve bender that started with a modest 69 lb. birth weight.
- N5000 truly checks all of the boxes! An elite herd sire prospect that is one of the greatest breeding achievements in the history of Hanel's Black Simmentals.
- He recorded a REA Ratio at 105 and an IMF Ratio at 123.
- Top 2% WW, YW, TI; Top 3% MWW; Top 4% ADG; Top 5% CW; Top 10% DOC, API; Top 15% CE, \$GN, MCE, STAY; Top 20% BW; Top 25% MILK, MARB.
- **TERMS ANNOUNCED SALE DAY.**

Lot 1

HANELS LAWMAKER N5000

GGP

4537108

BW: 69 • Adj. WW: 840 • Scan WT: 1418

3/4 SM 1/4 AN • 1/1/25

SIRE DEER VALLEY OPTIMUM 9246

DAM HOOK'S EAGLE 6E

HANELS LAWMAKER L3010

HANELS MISS EAGLE L3075

HANELS MISS AXIS D6071

M4 MS WESTERN WAY F6Z

SCAN DATA Adj. IMF: 4.31 • Adj. BF: 0.34 • Adj. REA: 15.45 HOMO POLLED • HOMO BLACK

CE	BW	WW	YW	ADG	MCE	MLK	MW	STY	DOC	CW	YG	MRB	BF	REA	API	TI
16	-2.2	103.4	165.6	0.39	10	27.6	79.3	19	16.6	62.4	-0.03	0.59	-0.003	0.74	173.1	105.9



HOOK'S EAGLE 6E -
MATERNAL GRANDSIRE OF LOT 1



HANELS LAWMAKER L3010 -
SIRE OF LOTS 1-16

THE LAWMAKER SIRE GROUP



HOOK'S BLACK HAWK 50B - MATERNAL GRANDSIRE OF LOT 2



CONNELLY BLACKHAWK 6198 - MATERNAL GRANDSIRE OF LOT 3



OMF EPIC E27 - MATERNAL GRANDSIRE OF LOTS 4 & 5

Lot 2

HANELS LAWMAKER N5022

4537097

BW: 75 • Adj. WW: 722 • Scan WT: 1292

3/4 SM 1/4 AN • 1/2/25

SIRE DEER VALLEY OPTIMUM 9246

DAM HOOK'S BLACK HAWK 50B

HANELS LAWMAKER L3010

HANELS MISS BLACK HAWK L3026

HANELS MISS AXIS D6071

HANELS MISS PROCLAMATION J1184

SCAN DATA Adj. IMF: 3.63 • Adj. BF: 0.29 • Adj. REA: 14.62

CE	BW	WW	YW	ADG	MCE	MLK	MW	STY	DOC	CW	YG	MRB	BF	REA	API	TI
15.7	-1.5	79.4	122	0.27	8.3	24.6	64.3	20.6	14.1	49.7	-0.24	0.51	-0.024	1.09	160.1	88.6

- Another standout from the Hanel's Lawmaker L3010 sire group that deserves serious consideration on sale day. This powerful three-quarter blood SimAngus herd sire prospect is backed by a hard working first calf heifer dam that is sired by Hook's Black Hawk 50B.
- He is a long sided, big topped, thick ended bull that is ready for heavy service!
- Top 4% REA; Top 10% STAY; Top 15% CE, API; Top 25% BW; Top 30% TI; Top 35% MCE, DOC, YG, MARB.

Lot 4

HANELS LAWMAKER N5017

4537115

BW: 78 • Adj. WW: 734 • Scan WT: 1236

3/4 SM 1/4 AN • 1/1/25

SIRE DEER VALLEY OPTIMUM 9246

DAM OMF EPIC E27

HANELS LAWMAKER L3010

HANELS MISS EPIC L3109

HANELS MISS AXIS D6071

CCS/UDE SUMMER 22H

SCAN DATA Adj. IMF: 2.76 • Adj. BF: 0.26 • Adj. REA: 13.01 HOMO POLLED • HOMO BLACK

CE	BW	WW	YW	ADG	MCE	MLK	MW	STY	DOC	CW	YG	MRB	BF	REA	API	TI
12	1.3	95.4	149	0.33	10	25.2	72.9	18.4	10.6	49.8	-0.16	0.27	-0.045	0.67	139.1	88.2

- A homozygous black, homozygous polled three-quarter blood stud continues the run of quality from the Hanel's Lawmaker L3010 sons.
- His dam is a first-calf heifer sired by the breed-leading super sire, OMF Epic E27. She has done a fantastic job early in her career.
- His performance stats show curve bending capabilities, from a 78 lb. birth to a 734 lb. weaning weight.
- Caps it off with a well-rounded genetic profile for multi trait improvement.
- Top 4% MCE; Top 10% WW, YW, ADG, CW; Top 20% STAY; Top 25% CE; Top 30% TI; Top 35% MILK, MARB.

Lot 3

HANELS LAWMAKER N5076

4576506

BW: 84 • Adj. WW: 705 • Scan WT: 1240

1/4 SM 3/4 AN • 1/12/25

SIRE DEER VALLEY OPTIMUM 9246

DAM CONNEALY BLACKHAWK 6198

HANELS LAWMAKER L3010

HANELS MISS BLACKHAWK H0004

HANELS MISS AXIS D6071

MILL BRAE TU JOANIE 6142

SCAN DATA Adj. IMF: 4.92 • Adj. BF: 0.16 • Adj. REA: 13.9

CE	BW	WW	YW	ADG	MCE	MLK	MW	STY	DOC	CW	YG	MRB	BF	REA	API	TI
11.5	1.5	100.7	172.6	0.45	7.5	26.6	76.8	19.4	14.5	64.6	0.14	0.71	0.001	0.28	164.4	100.1

- N5076 is low percentage SimAngus stud that is loaded with power, performance, and real-world application. We love this sire group and the quality that they offer throughout.
- The dam of N5076 is a productive daughter of Connealy Blackhawk 6198 that traces to a hard-working female that we purchased from the Mill Brae program a few years ago. A true beef bull that will add value to every segment of your program!
- Top 1% YW, ADG; Top 4% WW, CW, Top 10% \$GN, MWW, TI; Top 15% STAY, MARB; Top 25% DOC, Top 30% MILK.

Lot 5

HANELS LAWMAKER N5044

4537067

BW: 82 • Adj. WW: 674 • Scan WT: 1183

5/8 SM 3/8 AN • 1/7/25

SIRE DEER VALLEY OPTIMUM 9246

DAM OMF EPIC E27

HANELS LAWMAKER L3010

HANELS MISS EPIC K2054

HANELS MISS AXIS D6071

M4 MS STOCK OPTION Z6H

SCAN DATA Adj. IMF: 4.03 • Adj. BF: 0.37 • Adj. REA: 14.6 HOMO POLLED

CE	BW	WW	YW	ADG	MCE	MLK	MW	STY	DOC	CW	YG	MRB	BF	REA	API	TI
13.6	0.6	82.4	128.5	0.29	9.9	24.1	65.5	20.6	14.9	68	0	0.58	0.003	0.79	157.5	88.2

- Bred on the same cross as the N5017 sale entry, N5044 combines the \$32,000 Hanel's Lawmaker L3010 with an exciting young daughter of OMF Epic E27.
- This sire group is packed full of power and quality. They are certain to be a sale day feature.
- He excels for almost every trait on the data sheet when you study his EPD rankings.
- N5044 is homozygous polled.
- Top 1% CW; Top 4% MCE; Top 10% STAY, MARB; Top 15% CE, DOC; Top 20% API; Top 30% ADG, TI; Top 35% BW, YW.

THE LAWMAKER SIRE GROUP

Lot 6

HANELS LAWMAKER N5139

4540862

GGP

BW: 69 • Adj. WW: 628 • Scan WT: 1110

1/4 SM 3/4 AN • 1/28/25

SIRE DEER VALLEY OPTIMUM 9246

DAM BROOKING ASSET 5065

HANELS LAWMAKER L3010

CHESTNUT MISS BANDO 8105

HANELS MISS AXIS D6071

CHESTNUT MISS BANDO 590

SCAN DATA Adj. IMF: 4.16 • Adj. BF: 0.32 • Adj. REA: 15.19 HOMO POLLED

CE	BW	WW	YW	ADG	MCE	MLK	MW	STY	DOC	CW	YG	MRB	BF	REA	API	TI
17.7	-2.9	68.1	118.9	0.32	11.4	22.1	56.1	21.2	11.9	51.1	0.17	0.63	0.035	0.3	165.1	83.4

- Hanel Lawmaker N5139 is a calving ease candidate from this feature sire cohort.
- Only 69 lb. at birth and backed by elite rankings within the breed for CE and BW EPDs, N5139 should be a top candidate for heifer breeding projects.
- Additionally, he excels for adding longevity and carcass quality to his progeny, resulting in a high-ranking API index.
- N5139 is homozygous polled.
- Top 1% MCE; Top 3% CE, BW; Top 5% STAY, MARB; Top 10% CW; Top 15% ADG, API.

Lot 8

HANELS LAWMAKER N5301

4573057

GGP

BW: 95 • Adj. WW: 694 • Scan WT: 1217

3/4 SM 1/4 AN • 1/1/25

SIRE DEER VALLEY OPTIMUM 9246

DAM MR SR HIGHLIFE G1609

HANELS LAWMAKER L3010

HANELS MISS HIGHLIFE L3031

HANELS MISS AXIS D6071

HANELS MISS PAY DIRT H0165

SCAN DATA Adj. IMF: 3.18 • Adj. BF: 0.16 • Adj. REA: 14.01

CE	BW	WW	YW	ADG	MCE	MLK	MW	STY	DOC	CW	YG	MRB	BF	REA	API	TI
9.5	1.7	88.9	150.3	0.38	8	25.8	70.2	20.9	12.1	51	-0.09	0.51	-0.044	0.47	152.7	90

- Another Hanel Lawmaker L3010 son from an exciting first-calf heifer mating. The dam of N5301, L3031, is an own daughter of MR SR Highlife G1609.
- You can't go wrong with the L3010 sire group. They are consistently high-quality livestock and are the leadoff feature set for good reason.
- On paper, N5301 is an elite genetic breeding piece with his combination of STAY, MARB, and growth at weaning and yearling. He moves the needle!
- Top 2% ADG; Top 5% STAY; Top 10% YW, MARB, CW; Top 20% MCE; Top 25% WW, API, TI; Top 35% MILK.

Lot 9

HANELS LAWMAKER N5121

4537141

GGP

BW: 86 • Adj. WW: 753 • Scan WT: 1243

5/8 SM 3/8 AN • 1/22/25

SIRE DEER VALLEY OPTIMUM 9246

DAM NLC BREAK FREE 72W

HANELS LAWMAKER L3010

HANELS MISS FREE B4207

HANELS MISS AXIS D6071

HANELS MISS FRONT Z2236

SCAN DATA Adj. IMF: 2.79 • Adj. BF: 0.19 • Adj. REA: 15.28

CE	BW	WW	YW	ADG	MCE	MLK	MW	STY	DOC	CW	YG	MRB	BF	REA	API	TI
11.1	2.1	93.9	165.7	0.45	8.2	26.8	74	18.4	13.1	64.4	-0.23	0.39	-0.052	1.03	146.8	91.2

- Hanel Lawmaker N5121 is a heavy weight among this sire group, as well as the entire offering of spring born herd sire prospects.
- His 753 lb. adjusted weaning weight is among the leaders of the sale group.
- This high percentage stud carries an elite growth EPD profile with added carcass merit potential as well. An ideal combination for those wanting to feed good cattle.
- Top 1% ADG, CW; Top 2% YW; Top 15% WW, MCE; Top 20% MARB, REA; Top 25% STAY, TI; Top 30% MILK, API; Top 35% CE, DOC.

Lot 7

HANELS LAWMAKER N5180

4537180

GGP

BW: 88 • Adj. WW: 719 • Scan WT: 1152

5/8 SM 1/4 AN 1/8 CH • 2/13/25

SIRE DEER VALLEY OPTIMUM 9246

DAM CLRS DIVIDEND 405D

HANELS LAWMAKER L3010

HANELS MISS DIVIDEND G9017

HANELS MISS AXIS D6071

HANELS MISS SOURCE E7097

SCAN DATA Adj. IMF: 2.65 • Adj. BF: 0.19 • Adj. REA: 14.31

CE	BW	WW	YW	ADG	MCE	MLK	MW	STY	DOC	CW	YG	MRB	BF	REA	API	TI
11.6	1.4	87.3	140.4	0.33	6.6	25	70.1	17.4	14.1	64.9	-0.16	0.25	-0.027	1.02	133.1	83

- A powerful percentage Simmental prospect that has the mass and substance to sire calves that do the same.
- His CLRS Dividend 405D dam is in the prime of her production career and is doing a great job.
- His genetic data reads as a bull who will improve your pay weights across the entire cycle of production. He is a true power bull.
- Top 1% CW; Top 15% ADG; Top 20% YW; Top 25% WW, REA, DOC; Top 30% CE; Top 35% STAY.



CLRS DIVIDEND 405D -
MATERNAL GRANDSIRE OF LOT 7



HANELS TEN PLUS M4033 -
MATERNAL BROTHER TO DAM OF LOT 8

Lot 10

HANELS LAWMAKER N5029

4537123

GGP

BW: 79 • Adj. WW: 685 • Scan WT: 1184

5/8 SM 3/8 AN • 1/2/25

SIRE DEER VALLEY OPTIMUM 9246

DAM HANELS COWBOY CUT D6208

HANELS LAWMAKER L3010

HANELS MISS COWBOY CUT L3148

HANELS MISS AXIS D6071

TJ MISS 592E

SCAN DATA Adj. IMF: 3.68 • Adj. BF: 0.32 • Adj. REA: 15.59

CE	BW	WW	YW	ADG	MCE	MLK	MW	STY	DOC	CW	YG	MRB	BF	REA	API	TI
13.5	-0.1	88.2	143.2	0.34	9.9	24.4	68.5	20	15.3	53.4	-0.2	0.16	-0.033	0.93	139.4	83.6

- Here is a modest birth percentage Simmental raised by a young first-calf Hanel Cowboy Cut D6208 daughter.
- Posted a modest 79 birth weight on his performance statistics.
- Brings together growth, gain, docility, and longevity in an impressive EPD profile.
- Top 4% MCE; Top 5% ADG; Top 10% STAY, CW; Top 15% CW, YW, DOC; Top 25% BW, WW; Top 35% REA.

THE LAWMAKER SIRE GROUP

Lot 11

HANELS LAWMAKER N5053

4537195

BW: 83 • Adj. WW: 641 • Scan WT: 1123

3/4 SM 1/4 AN • 1/8/25

SIRE DEER VALLEY OPTIMUM 9246
HANELS LAWMAKER L3010
HANELS MISS AXIS D6071

DAM HANELS COWBOY CUT D6208
HANELS MISS COWBOY CUT G9556
HANELS MISS OLIE Z2205

SCAN DATA Adj. IMF: 2.99 • Adj. BF: 0.35 • Adj. REA: 12.57

CE	BW	WW	YW	ADG	MCE	MLK	MW	STY	DOC	CW	YG	MRB	BF	REA	API	TI
14.7	-1.4	73.9	112.3	0.24	10.3	26.4	63.4	24.9	14.5	41.3	-0.12	0.18	-0.014	0.67	145.7	76.2

- N5053 is a three-quarter blood calving ease, cow making specialist from the lineage of Hanel Cowboy Cut D6208 on the maternal side of his pedigree.
- The D6208 influence runs strong through our cow pedigrees when you study this offering, and with good reason. He produces females that work.
- His genetic merits are highlighted by elite STAY, CE, and DOC.
- Top 1% STAY; Top 3% MCE; Top 10% CE, BW; Top 20% DOC; Top 25% CW; Top 30% API.

Lot 13

HANELS LAWMAKER N5151

4537157

BW: 95 • Adj. WW: 842 • Scan WT: 1447

5/8 SM 3/8 AN • 2/1/25

SIRE DEER VALLEY OPTIMUM 9246
HANELS LAWMAKER L3010
HANELS MISS AXIS D6071

DAM HANELS HOOVER DAM A3029
HANELS MISS HOOVER D6109
HANELS MISS UNITED B4021

SCAN DATA Adj. IMF: 3.49 • Adj. BF: 0.18 • Adj. REA: 17.94 **HOMO BLACK**

CE	BW	WW	YW	ADG	MCE	MLK	MW	STY	DOC	CW	YG	MRB	BF	REA	API	TI
4.7	5.4	110.8	180.7	0.44	5.5	31.6	87.1	15.5	12.6	79.5	-0.08	0.21	-0.025	0.94	121	90.8

- A powerfully built five-eighths prospect that is an absolute meat wagon.
- N5151 is tied for the number 1 adjusted weaning weight bull in the sale with his 842 lb. posted weight.
- His maternal side traces back to a known commodity in the Angus breed, the leading sire Hoover Dam.
- His elite growth EPDs validate his performance on the scale. N5151 is homozygous black.
- Top 1% WW, YW, ADG, CW; Top 10% MILK; Top 25% TI; Top 35% REA.

Lot 15

HANELS LAWMAKER N5050

4537077

BW: 85 • Adj. WW: 683 • Scan WT: 1245

5/8 SM 3/8 AN • 1/7/25

SIRE DEER VALLEY OPTIMUM 9246
HANELS LAWMAKER L3010
HANELS MISS AXIS D6071

DAM HANELS WIDE TRACK H0079
HANELS MISS WIDE TRACK K2113
HANELS MISS AXIS D6084

SCAN DATA Adj. IMF: 3.71 • Adj. BF: 0.25 • Adj. REA: 15.11

CE	BW	WW	YW	ADG	MCE	MLK	MW	STY	DOC	CW	YG	MRB	BF	REA	API	TI
11.3	0.6	95.5	161.4	0.41	9.5	19.8	67.6	18.3	14	65.9	-0.16	0.43	-0.033	0.95	150.4	93.2

- N5050 is yet another strong candidate from the Hanel Lawmaker L3010 sire line, out of a quality young Hanel Wide Track H0079 dam.
- A genetic outlier for his breed-leading rankings in so many traits. He can take a calf crop in the right direction across the board.
- This bull is worth a second look and potential investment in his genetic quality.
- Top 1% ADG, CW; Top 3% YW; Top 10% WW, MCE; Top 20% MARB, TI; Top 25% STAY, DOC, API; Top 30% CE, REA; Top 35% BW.

Lot 12

HANELS LAWMAKER N5009

4537124

BW: 77 • Adj. WW: 695 • Scan WT: 1129

5/8 SM 3/8 AN • 1/1/25

SIRE DEER VALLEY OPTIMUM 9246
HANELS LAWMAKER L3010
HANELS MISS AXIS D6071

DAM HANELS COWBOY CUT H0219
HANELS MISS COWBOY CUT L3149
HANELS MISS CON D6005

SCAN DATA Adj. IMF: 3.81 • Adj. BF: 0.23 • Adj. REA: 14.27

CE	BW	WW	YW	ADG	MCE	MLK	MW	STY	DOC	CW	YG	MRB	BF	REA	API	TI
12	0.9	80.4	131.3	0.32	9	24.8	65.2	16.4	13.8	57.3	-0.06	0.2	-0.004	0.79	126.3	77.6

- Hanel Lawmaker N5009 is a fresh mating, from the first crop of Hanel Lawmaker L3010 son to be offered, out of a nice first-calf Hanel Cowboy Cut H0219 daughter.
- He posts a modest 77 lb. birth weight and was just shy of 700 lb. on his adjusted weaning weight.
- One of the leading CW EPD bulls in the offering, while still maintaining solid calving ease.
- Top 4% CW; Top 10% MCE; Top 15% ADG; Top 25% CE, DOC; Top 30% YW.

Lot 14

HANELS LAWMAKER N5135

4537011

BW: 89 • Adj. WW: 812 • Scan WT: 1238

5/8 SM 3/8 AN • 1/25/25

SIRE DEER VALLEY OPTIMUM 9246
HANELS LAWMAKER L3010
HANELS MISS AXIS D6071

DAM HANELS PER VISION 2020
HANELS MISS 2020 H0061
HANELS MISS HUMMER Y1203

SCAN DATA Adj. IMF: 3.05 • Adj. BF: 0.28 • Adj. REA: 17.76

CE	BW	WW	YW	ADG	MCE	MLK	MW	STY	DOC	CW	YG	MRB	BF	REA	API	TI
7.2	1.6	91	152.8	0.39	4.9	26.7	72.2	14.9	13.1	64.6	-0.09	0.26	-0.025	0.81	124.5	84.6

- N5135 is yet another bull built with added length, mass, and quality.
- Massive 812 lb. adjusted weaning weight will impress the stockmen looking for pounds.
- His genetic merits for growth and gain suggest you will like the performance on these calves.
- Top 1% ADG, CW; Top 10% YW; Top 20% WW; Top 30% MILK; Top 35% DOC.

Lot 16

HANELS LAWMAKER N5157

4573174

BW: 87 • Adj. WW: 646 • Scan WT: 1236

1/2 SM 1/2 AN • 2/3/25

SIRE DEER VALLEY OPTIMUM 9246
HANELS LAWMAKER L3010
HANELS MISS AXIS D6071

DAM VJT DRIFTWOOD E55
HANELS MISS DRIFTWOOD H0113
HANELS MISS STIM B4037

SCAN DATA Adj. IMF: 3.1 • Adj. BF: 0.23 • Adj. REA: 15.21

CE	BW	WW	YW	ADG	MCE	MLK	MW	STY	DOC	CW	YG	MRB	BF	REA	API	TI
14.3	-1.2	69.4	112.8	0.27	9.4	25.3	60	17.9	12	36.8	-0.08	0.43	-0.001	0.6	144.2	79.7

- Hanel Lawmaker N5157 is a stout featured, bold ribbed, easy fleshing herd sire prospect that is supported by a young and productive daughter of VJT Driftwood E55.
- This SimAngus stud is loaded with performance, shape, and dimension. His is a moderate birth weight bull that offers tremendous spread genetics.
- Top 15% \$GN, MCE; Top 25% STAY; Top 30% CE; Top 35% BW, DMI.

THE OPTIMUM SIRE GROUP

Lot 17



DEER VALLEY OPTIMUM 9246 - SIRE OF LOTS 17-20



HARMS HARDWOOD - MATERNAL GRANDSIRE OF LOTS 17 & 18

Lot 17

HANELS OPTIMUM N5012

GGP

4537088

BW: 75 • Adj. WW: 686 • Scan WT: 1157

1/2 SM 1/2 AN • 1/1/25

SIRE DEER VALLEY GROWTH FUND
DEER VALLEY OPTIMUM 9246
G A R PROGRESS 830

DAM HARMS HARDWOOD
HANELS MISS HARDWOOD K2592
HANELS MISS COWBOY CUT G9506

SCAN DATA Adj. IMF: 3.24 • Adj. BF: 0.16 • Adj. REA: 14.02

CE	BW	WW	YW	ADG	MCE	MLK	MW	STY	DOC	CW	YG	MRB	BF	REA	API	TI
18.5	-1.3	92	150.7	0.37	13.5	28.6	74.6	19.8	14	51.5	-0.02	0.63	0.005	0.63	173.9	99.2

- Hanel Optimum N5012 is a sharp featured, level topped feature member of the Deer Valley Optimum 9246 sire group. He's deep bodied, massive in his quarter, and easy to look at.
- This half-blood SimAngus was raised by a Harms Hardwood daughter that is a favorite in the young cow group.
- Only 75 lb. at birth and backed by elite BW and CE figures. This guy can cover some heifers.
- His EPD profile is one of the best in the offering, highlighted by one of the strongest combinations of API and TI that you will find in this spring born selection.
- Top 1% MCE; Top 2% CE; Top 3% ADG; Top 5% MARB; Top 10% YW, CW, API, TI, STAY; Top 15% BW, WW; Top 20% MILK; Top 25% DOC.



THE OPTIMUM SIRE GROUP

Lot 18

HANELS OPTIMUM N5018

GGP
4537112

BW: 67 • Adj. WW: 689 • Scan WT: 1256

3/8 SM 5/8 AN • 1/2/25

SIRE DEER VALLEY GROWTH FUND
DEER VALLEY OPTIMUM 9246
G A R PROGRESS 830

DAM HARMS HARDWOOD
HANELS MISS HARDWOOD L3098
HANELS MISS PAYDIRT H0048

SCAN DATA Adj. IMF: 4.39 • Adj. BF: 0.51 • Adj. REA: 13.64 HOMO POLLED • HOMO BLACK

CE	BW	WW	YW	ADG	MCE	MLK	MW	STY	DOC	CW	YG	MRB	BF	REA	API	TI
19.3	-1.3	92.2	159.7	0.42	13.3	29.2	75.2	18	16.7	64.6	0.11	0.64	0.021	0.53	169.9	98.1

- Soft made in his center body with added extension in his front third, N5018 is a low percentage Simmental sire prospect that covers all the bases needed in a real-world beef bull.
- Only 67 lb. at birth and solid weaning data showcase the hard work his first-calf dam did in raising him.
- Another genetic superstar with elite API, TI, and top of the breed rankings for a plethora of other traits.
- N5018 is homozygous black and homozygous polled.
- Top 1% ADG, MCE; Top 2% CE, CW; Top 3% YW; Top 5% DOC, MARB; Top 10% API, TI; Top 15% BW, WW, MILK; Top 30% STAY.



Lot 19

HANELS OPTIMUM N5010

GGP
4537096

BW: 75 • Adj. WW: 703 • Scan WT: 1220

1/2 SM 1/2 AN • 1/1/25

SIRE DEER VALLEY GROWTH FUND
DEER VALLEY OPTIMUM 9246
G A R PROGRESS 830

DAM OMF EPIC E27
HANELS MISS EPIC L3024
HANELS MISS DIVIDEND J1086

SCAN DATA Adj. IMF: 4.12 • Adj. BF: 0.34 • Adj. REA: 12.8

CE	BW	WW	YW	ADG	MCE	MLK	MW	STY	DOC	CW	YG	MRB	BF	REA	API	TI
15	-0.7	83.3	141.1	0.36	9.7	26.9	69	13.5	13.4	53.8	0.1	0.52	0.035	0.55	146.2	89.6

- This silver fox is a powerhouse herd bull. The muscle shape and mass he carries is hard to deny, and he does so in a phenotypic package that is easy fleshing, neat made and well balanced.
- His first-calf dam is an own daughter of breed favorite and ST Genetics leading Simmental sire, OMF Epic E27.
- N5010 is a registered half-blood Simmental sired by Deer Valley Optimum 9246. His dam is a purebred Simmental cow that traces back to a daughter of LT-WC Templeton 1483 PL ET, which is the Charolais influence that has created his smokey hide color.
- Top 3% ADG; Top 4% MCE; Top 10% CE, CW; Top 15% YW, MARB; Top 20% BW; Top 25% MILK; Top 30% TI; Top 35% DOC, API.



Lot 20

HANELS OPTIMUM N5035

GGP
4537126

BW: 91 • Adj. WW: 738 • Scan WT: 1236

3/8 SM 5/8 AN • 1/3/25

SIRE DEER VALLEY GROWTH FUND
DEER VALLEY OPTIMUM 9246
G A R PROGRESS 830

DAM HANELS COWBOY CUT D6208
HANELS MISS COWBOY CUT L3158
HANELS MISS BIS B4016

SCAN DATA Adj. IMF: 3.27 • Adj. BF: 0.28 • Adj. REA: 14.35

CE	BW	WW	YW	ADG	MCE	MLK	MW	STY	DOC	CW	YG	MRB	BF	REA	API	TI
13	1.6	93.8	164.2	0.44	11.3	25.8	72.7	16.1	12.2	60	0.27	0.56	0.037	0.12	148.1	91.7

- The heavy weight of the Deer Valley Optimum 9246 sire group, N5035 is a low percentage stud of a power bull.
- His 738 lb. adjusted weaning weight off of a first-calf Hanel Cowboy Cut D6208 daughter is certainly impressive.
- His data sheet lights up the scoreboard for growth and carcass traits.
- Top 1% ADG, MCE; Top 2% YW; Top 3% CW; Top 10% MARB; Top 15% WW; Top 20% CE; Top 25% TI; Top 30% API; Top 35% MILK.



THE KINGPIN SIRE GROUP

Lot 21



- Moving into another standout sire group, Hanels Kingpin N5147 carries himself with the look and presence of a surefire herd bull prospect. He's long, stout, and good to the ground. Here is the heaviest yearling bull on ultrasound day with an impressive scan weight of 1476 lbs. and a 17+ inch ribeye area to ratio at 106.
- This string of purebred MCC-PLG Kingpin 319 sons mashed the scales down, including an 842 lb. adjusted weaning weight on this stud that is near the top of the sale. With his elite figures for WW, YW, ADG, and CW, this dude is sure to sire calves that will ring the bell at market with their pay weights.
- N5147 is homozygous polled.
- Top 3% ADG; Top 4% YW; Top 5% WW; Top 10% CW, REA; Top 15% TI; Top 30% BW, YG.

Lot 21

HANELS KINGPIN N5147

GGP

4537031

BW: 89 • Adj. WW: 842 • Scan WT: 1476

PB SM • 1/30/25

SIRE OMF HARD RIGHT H21

DAM W/C EXECUTIVE ORDER 8543B

MCC-PLG KINGPIN 319

M4 MS MADE TO ORDER 940G

W/C MISS WERNING 983G

KSU MISS SHEAR FORCE 6Z

SCAN DATA Adj. IMF: 2.67 • Adj. BF: 0.29 • Adj. REA: 17.18 **HOMO POLLED • HOMO BLACK**

CE	BW	WW	YW	ADG	MCE	MLK	MW	STY	DOC	CW	YG	MRB	BF	REA	API	TI
8.8	0.3	98.4	157.2	0.37	4.4	23.2	72.2	15.3	11.9	49.9	-0.4	0.15	-0.073	1.18	141.3	94.1



MCC-PLG KINGPIN 319 - SIRE OF LOTS 21-33

THE KINGPIN SIRE GROUP

Lot 22



- Eye catching look on the profile with plenty of substance. A son of MCC-PLG Kingpin 319, N5146 has the look to catch your attention and the muscle dimension to keep it. His dam is a proven cow within the program and furthers his appealing package as a potential herd sire.
- This purebred stud is a pounds heavy powerhouse, backed by his 794 lb. adjusted weaning weight.
- Cowboys that raise their own heifers and sell their steers by the pound will love his genetic profile.
- Top 10% STAY, CW; Top 15% FAT; Top 25% WW, YW, ADG, REA; Top 35% DOC, YG.

Lot 22

HANELS KINGPIN N5146



4537168

BW: 90 • Adj. WW: 794 • Scan WT: 1322

PB SM • 1/29/25

SIRE OMF HARD RIGHT H21

MCC-PLG KINGPIN 319

W/C MISS WERNING 983G

DAM DIKEMANS DOUBLE DOWN 26W

HANELS MISS DOUBLE E7515

BDV BRIDGET T69

SCAN DATA Adj. IMF: 3.08 • Adj. BF: 0.25 • Adj. REA: 16.27

CE	BW	WW	YW	ADG	MCE	MLK	MW	STY	DOC	CW	YG	MRB	BF	REA	API	TI
7.3	2.6	88.7	134.8	0.29	5.6	23.1	67.3	20.1	12.9	49.2	-0.39	0.13	-0.093	1	138	84



W/C MISS WERNING 983G - PATERNAL GRANDDAM OF LOTS 21-33

THE KINGPIN SIRE GROUP



CCR COWBOY CUT 5048Z - MATERNAL GRANDDAM OF LOT 23

Lot 23

HANELS KINGPIN N5069

GGP

4537177

BW: 92 • Adj. WW: 712 • Scan WT: 1255

PB SM • 1/10/25

SIRE OMF HARD RIGHT H21

DAM CCR COWBOY CUT 5048Z

MCC-PLG KINGPIN 319

HANELS MISS CUT F8132

W/C MISS WERNING 983G

HANELS MISS STIM B4023

SCAN DATA Adj. IMF: 3.68 • Adj. BF: 0.23 • Adj. REA: 15.86

CE	BW	WW	YW	ADG	MCE	MLK	MW	STY	DOC	CW	YG	MRB	BF	REA	API	TI
11.1	0.9	94.1	145.5	0.32	5.5	18.7	65.6	18.9	13	39.5	-0.28	0.37	-0.054	0.83	158.7	95.1

- N5069 is a purebred MCC-PLG Kingpin 319 son that fits the mold of look and style, much like his brothers in this sire group.
- On the bottom side of his pedigree is the one and only CCR Cowboy Cut 5048Z.
- Pounds, longevity, and carcass merit highlight his EPD profile and lead to a high API ranking.
- Top 10% YW; Top 15% WW, ADG, TI; Top 20% STAY, API; Top 25% MARB; Top 30% CW; Top 35% CE, DOC.

Lot 24

HANELS KINGPIN N5125

GGP

4537050

BW: 90 • Adj. WW: 771 • Scan WT: 1355

PB SM • 1/22/25

SIRE OMF HARD RIGHT H21

DAM ELLINGSON OLIE W908

MCC-PLG KINGPIN 319

HANELS MISS OLIE Z2006

W/C MISS WERNING 983G

HANELS MISS POWER X0613

SCAN DATA Adj. IMF: 1.85 • Adj. BF: 0.16 • Adj. REA: 18.19

CE	BW	WW	YW	ADG	MCE	MLK	MW	STY	DOC	CW	YG	MRB	BF	REA	API	TI
10.8	2.6	93.5	149.5	0.35	5.4	20.2	66.8	18.4	11.6	53.4	-0.37	0.31	-0.075	1.13	152.1	92

- Like a broken record, N5125 is an attractive made heavy weight purebred stud sired by MCC-PLG Kingpin 319.
- His adjusted weaning weight of 771 lb. showcases the growth ability of this dude. His EPD profile backs it up with elite rankings for growth traits, as well as added carcass merit.
- The NUMBER 2 REA bull in the entire sale with an 18+ inch ribeye area to ratio at 112.
- Top 5% ADG; Top 10% YW, CW, REA; Top 15% WW; Top 20% TI, STAY; Top 25% API; Top 30% MARB; Top 35% FAT.

Lot 26

HANELS KINGPIN N5195

GGP

4537012

BW: 90 • Adj. WW: 777 • Scan WT: 1331

PB SM • 2/23/25

SIRE OMF HARD RIGHT H21

DAM SS/PRS HIGH VOLTAGE 244X

MCC-PLG KINGPIN 319

MISS HWGW HV64XX-Z45P

W/C MISS WERNING 983G

SFI MISSFINAL DRIVE Z45P

SCAN DATA Adj. IMF: 2.3 • Adj. BF: 0.17 • Adj. REA: 15.18

CE	BW	WW	YW	ADG	MCE	MLK	MW	STY	DOC	CW	YG	MRB	BF	REA	API	TI
7.4	1.8	93.1	147.8	0.34	4.2	19.8	66.3	14.9	12.9	53.5	-0.4	0.01	-0.089	1.13	125.4	84.7

- You'll be lucky to find another sire group that hits the scales at weaning like these boys did. N5195 weighs in at an adjusted weight of 777 lb.
- Another growth and pounds creating specialist when you study his genetic data.
- Top 5% CW; Top 10% YW, ADG, REA; Top 15% WW, FAT; Top 30% YG; Top 35% DOC.

Lot 25

HANELS KINGPIN N5084

GGP

4537191

BW: 92 • Adj. WW: 760 • Scan WT: 1312

PB SM • 1/15/25

SIRE OMF HARD RIGHT H21

DAM HANELS COWBOY CUT D6208

MCC-PLG KINGPIN 319

HANELS MISS COWBOY CUT G9195

W/C MISS WERNING 983G

HANELS MISS WAR X0203

SCAN DATA Adj. IMF: 3.04 • Adj. BF: 0.21 • Adj. REA: 15.35

CE	BW	WW	YW	ADG	MCE	MLK	MW	STY	DOC	CW	YG	MRB	BF	REA	API	TI
5.8	5.4	106.2	172.1	0.41	5.2	17.7	70.7	14.4	13.8	64.8	-0.29	0.07	-0.073	1.05	124.8	89.2

- Hanel Kingpin N5084 is another scale masher from the MCC-PLG Kingpin 319 sire line, this time out of an impressive Hanel Cowboy Cut D6208 dam that does her job every year.
- Another scale mashing purebred in this sire class, he weighed in at a 760 lb. adjusted weaning weight.
- N5084 posts one of the top combinations of WW and YW growth EPD in the sale, ranking among the very best of the breed for both traits.
- Top 1% YW, ADG, CW; Top 2% WW; Top 20% REA; Top 25% DOC; Top 30% TI.



THE KINGPIN SIRE GROUP

Lot 27



OMF HARD RIGHT H21 - PATERNAL GRANDSIRE OF LOTS 21-33



HANELS COWBOY CUT 13143 - MATERNAL BROTHER TO LOT 27

Lot 27

HANELS KINGPIN N5103

4537159

BW: 87 • Adj. WW: 790 • Scan WT: 1370 1/2 SM 1/2 AN • 1/18/25

SIRE OMF HARD RIGHT H21
MCC-PLG KINGPIN 319
W/C MISS WERNING 983G

DAM TOKACH UPDATE 9009
MILL BRAE TU JOANIE 6142
MILL BRAE IF JOANIE 9206

SCAN DATA Adj. IMF: 3.02 • Adj. BF: 0.27 • Adj. REA: 14.92 HOMO POLLED

CE	BW	WW	YW	ADG	MCE	MLK	MW	STY	DOC	CW	YG	MRB	BF	REA	API	TI
10.4	0.4	92.4	155.7	0.4	7.5	25	70.4	15.3	12.8	66	-0.13	0.58	-0.035	0.85	150.7	95.8

- Hanel Kingpin N5103 is an impressive SimAngus to lead into this portion of the MCC-PLG Kingpin 319 sire group. His length, look, and power makes the kind of herd sire that many can appreciate.
- A 790 lb. adjusted weaning weight validates his powerhouse performance.
- A rare combination of breed-leading CW, YW, and MARB. A bull that deserves serious consideration for those that retain ownership and want to take advantage of both payweight and grid premiums.
- N5103 is homozygous polled.
- Top 1% ADG, CW; Top 4% YW; Top 10% MARB; Top 15% WW, TI; Top 20% MCE; Top 25% API; Top 30% BW.

THE KINGPIN SIRE GROUP

Lot 28

HANELS KINGPIN N5034

GGP
4537009

BW: 82 • Adj. WW: 664 • Scan WT: 1248

1/2 SM 1/2 AN • 1/3/25

SIRE OMF HARD RIGHT H21

DAM BALDRIDGE XCEED X712

MCC-PLG KINGPIN 319

FIA X712 F51

W/C MISS WERNING 983G

FIA LADY Y85

SCAN DATA Adj. IMF: 3.16 • Adj. BF: 0.28 • Adj. REA: 15.69

CE	BW	WW	YW	ADG	MCE	MLK	MW	STY	DOC	CW	YG	MAR	BF	REA	API	TI
12.2	-0.3	91	146.6	0.35	8.3	17.3	61.6	10.5	12	57.6	-0.13	0.54	-0.031	0.78	140.1	93.6

- N5034 is a half-blood SimAngus that carries himself with presence and quality much like his paternal brothers in the pens.
- The MCC-PLG Kingpin 319 sons are sure to impress if you study these bulls on sale day. They are wide, thick, deep and stout from every angle!
- Another big-time data sheet with growth and grading ability combining for an impressive TI figure.
- Top 3% ADG, CW; Top 10% YW, MARB; Top 15% WW, MCE, TI; Top 25% CE, BW.

Lot 30

HANELS KINGPIN N5185

GGP
4537138

BW: 90 • Adj. WW: 754 • Scan WT: 1349

3/4 SM 1/4 AN • 2/16/25

SIRE OMF HARD RIGHT H21

DAM CONNEALY STIMULUS 8419

MCC-PLG KINGPIN 319

HANELS MISS STIM B4023

W/C MISS WERNING 983G

HANELS MISS EXPRES X0206

SCAN DATA Adj. IMF: 1.94 • Adj. BF: 0.2 • Adj. REA: 16.2

CE	BW	WW	YW	ADG	MCE	MLK	MW	STY	DOC	CW	YG	MAR	BF	REA	API	TI
5.2	2.3	90.7	143.3	0.33	5.8	21.5	66.7	17.4	11	68.6	-0.31	0.08	-0.071	1.17	115.3	78.7

- A pounds heavy three-quarter blood stud that checks the performance box with his 754 lb. adjusted weaning weight.
- His dam is a Connealy Stimulus 8419 daughter that is a "B model". She's been working hard here for a long time.
- Elite growth figures highlight his EPD chart. Perfect for those who sell calves by the pound.
- Top 1% CW; Top 10% ADG, REA; Top 15% YW; Top 20% WW; Top 30% STAY.

Lot 29

HANELS KINGPIN N5057

GGP
4537142

BW: 87 • Adj. WW: 646 • Scan WT: 1076

1/2 SM 1/2 AN • 1/8/25

SIRE OMF HARD RIGHT H21

DAM MILL BRAE FINAL ANSWER 0123

MCC-PLG KINGPIN 319

MILL BRAE 0123 KARAMA 4240

W/C MISS WERNING 983G

MILL BRAE MD KARAMA 8006

SCAN DATA Adj. IMF: 4.8 • Adj. BF: 0.37 • Adj. REA: 13.75

CE	BW	WW	YW	ADG	MCE	MLK	MW	STY	DOC	CW	YG	MAR	BF	REA	API	TI
12.9	0.1	78.6	121.9	0.27	4.8	18.7	57.3	17.4	12.5	44.8	-0.09	0.31	0.008	0.8	135.2	79.6

- Hanel Kingpin N5057 is a rock solid SimAngus prospect.
- His dam was a past selection from the famed Mill Brae Angus herd and has done a great job infusing those genetics into our program.
- A calving ease specialist in the SimAngus offering that can keep the gain and carcass traits in his steer calves. A high marbling sire that posted an IMF Ratio at 137!
- Top 20% CE, CW; Top 30% BW, ADG, MARB; Top 35% STAY.

Lot 31

HANELS KINGPIN N5136

GGP
4537165

BW: 81 • Adj. WW: 702 • Scan WT: 1207

3/4 SM 1/4 AN • 1/24/25

SIRE OMF HARD RIGHT H21

DAM HOOK'S BEACON 56B

MCC-PLG KINGPIN 319

HANELS MISS BEACON E7071

W/C MISS WERNING 983G

FIA CLARITY C33

SCAN DATA Adj. IMF: 4.17 • Adj. BF: 0.21 • Adj. REA: 15.41 HOMO POLLED

CE	BW	WW	YW	ADG	MCE	MLK	MW	STY	DOC	CW	YG	MAR	BF	REA	API	TI
13.7	-1.9	79.3	128.3	0.31	8.8	23.1	62.8	17.2	11.7	42.5	-0.19	0.62	-0.036	0.75	158.7	91.6

- N5136 is another nice three-quarter blood son of MCC-PLG Kingpin 319 that fits well into this sire group with his quality and traits of merit.
- His dam is a Hook's Beacon 50B daughter that has worked hard and done a good job here.
- Combines calving ease and carcass merit together in his EPD profile to create one of the highest combinations of API and TI in the yearling bull offering.
- N5136 is homozygous polled.
- Top 10% BW, MCE, MARB; Top 15% CE, ADG; Top 20% API, TI; Top 25% CW; Top 35% YW, STAY.



THE KINGPIN SIRE GROUP



S A V BISMARCK 5682 - MATERNAL GRANDSIRE OF LOT 32

Lot 32

GGP

HANELS KINGPIN N5145

4537146

BW: 88 • Adj. WW: 799 • Scan WT: 1396 3/4 SM 1/4 AN • 1/29/25

SIRE OMF HARD RIGHT H21

DAM S A V BISMARCK 5682

MCC-PLG KINGPIN 319

HANELS MISS MARK C5036

W/C MISS WERNING 983G

HANELS MISS HUMMER X0612

SCAN DATA Adj. IMF: 3.75 • Adj. BF: 0.37 • Adj. REA: 16.58 HOMO BLACK

CE	BW	WW	YW	ADG	MCE	MLK	MW	STY	DOC	CW	YG	MRB	BF	REA	API	TI
9.5	1.8	99	157.3	0.36	5.5	20.8	70.5	14.8	11.6	63.7	-0.25	-0.05	-0.05	1.1	113	81.7

- One of the heaviest bulls in the offering with his adjusted weaning weight of 799 lb.
- Top 5% or better for WW, YW, ADG, and CW showcase him as an elite pound making herd sire prospect.
- N5145 is homozygous black.
- Top 2% CW; Top 3% ADG; Top 4% YW; Top 5% WW; Top 15% REA.

Lot 33

GGP

HANELS KINGPIN N5153

4537022

BW: 86 • Adj. WW: 768 • Scan WT: 1172 3/4 SM 1/4 AN • 2/1/25

SIRE OMF HARD RIGHT H21

DAM TJ POWER GRID 363Y

MCC-PLG KINGPIN 319

TJ MISS 592E

W/C MISS WERNING 983G

TJ 95Y

SCAN DATA Adj. IMF: 2.86 • Adj. BF: 0.21 • Adj. REA: 15.57 HOMO POLLED

CE	BW	WW	YW	ADG	MCE	MLK	MW	STY	DOC	CW	YG	MRB	BF	REA	API	TI
7.9	1.9	89	138.4	0.31	4.2	22.2	66.7	19.2	13.2	44.8	-0.23	0.05	-0.064	0.69	120.1	77.6

- N5153 rounds out the MCC-PLG Kingpin 319 showcase in the yearling bulls. This three-quarter blood does not need to be overlooked, as quality runs all the way through this set.
- His 768 lb. adjusted weaning weight is among the top cut of this year's yearling bulls.
- Strong growth with added longevity in his genetic profile showcases a bull that can leave you a powerful set of SimAngus females in the herd.
- N5153 is homozygous polled.
- Top 15% ADG, STAY; Top 20% WW, YW, CW; Top 35% DOC.



THE LUDACRIS SIRE GROUP

Lot 34



WHF SUMMER 365C - MATERNAL GRANDDAM OF LOT 34



HANELS FAVOR M4106 - MATERNAL BROTHER TO LOT 34



HANELS FAVOR K2122 - MATERNAL BROTHER TO LOT 34

Lot 34

HANELS LUDACRIS N5115

GGP

4537144

BW: 91 • Adj. WW: 795 • Scan WT: 1306

PB SM • 1/20/25

SIRE KCC1 COUNTERTIME 872H
OMF LUDACRIS L17
OMF TIME LESS B100

DAM CDI INNOVATOR 325D
CCS/UDE SUMMER 22H
WHF SUMMER 365C

SCAN DATA Adj. IMF: 2.6 • Adj. BF: 0.18 • Adj. REA: 17.15 HOMO POLLED • HOMO BLACK

CE	BW	WW	YW	ADG	MCE	MLK	MW	STY	DOC	CW	YG	MRB	BF	REA	API	TI
4.9	3.7	94.9	139.8	0.28	3	21.2	68.5	12.1	8.5	46.1	-0.38	0.26	-0.082	1	125.4	88.6

- Hanel Ludacris N5115 is an all-around herd sire prospect that meets the specs of the most discriminating stockman. Stout featured, soft bodied, with added eye appeal and design, this purebred prospect is going to have a lot of friends on sale day.
- He introduces the debut crop of the \$70,000 OMF Ludacris L17, a favorite and high seller at the 2024 Oak Meadow Farm sale. A son of KCC1 Countertime 872H, L17 is making his mark with the impressive set of sons in this sale.
- His dam, CCS/UDE Summer 22H is an impressive young donor in our program who raised several sons that are features in this set of yearling bulls.
- Posted a scale crushing 795 lb. weaning weight on his performance chart.
- If you're looking for a bull to sire pounds heavy calves, look no further.
- N5115 is homozygous black and homozygous polled.
- Top 10% WW; Top 20% YW, CW; Top 25% FAT; Top 30% ADG, REA, TI.

Lot 35

HANELS LUDACRIS N5031

GGP

4537105

BW: 94 • Adj. WW: 692 • Scan WT: 1199

PB SM • 1/2/25

SIRE KCC1 COUNTERTIME 872H
OMF LUDACRIS L17
OMF TIME LESS B100

DAM OMF HARD RIGHT H21
HANELS MISS HARD RIGHT L3056
CCS/UDE SUMMER 22H

SCAN DATA Adj. IMF: 4.12 • Adj. BF: 0.21 • Adj. REA: 14.82 HOMO POLLED • HOMO BLACK

CE	BW	WW	YW	ADG	MCE	MLK	MW	STY	DOC	CW	YG	MRB	BF	REA	API	TI
7.6	2.5	87.1	133.4	0.29	2.3	20.2	63.7	11.4	13.3	29.1	-0.38	0.37	-0.076	0.84	133.6	88.9

- Another purebred OMF Ludacris L17 son, with more Oak Meadow influence on the bottom side, as he is out of an OMF Hard Right H21 first calf heifer.
- These OMF Ludacris L17 sons are powerhouse herd bull prospects.
- Growth and marbling rolled into one rock solid EPD profile.
- N5031 is homozygous black and homozygous polled.
- Top 25% WW, YW, ADG, MARB; Top 30% TI; Top 35% DOC, YG, FAT.



OMF LUDACRIS L17 -
SIRE OF LOTS 34-42

THE LUDACRIS SIRE GROUP



CLRS EMOJI 703E - DAM OF LOTS 36 & 37



HANELS HARD RIGHT L3528 - MATERNAL BROTHER TO LOTS 36 & 37

Lot 36

HANELS LUDACRIS N5071

4537078

BW: 91 • Adj. WW: 745 • Scan WT: 1220

PB SM • 1/11/25

SIRE KCC1 COUNTERTIME 872H

DAM CLRS CONSTITUTION 311 C

OMF LUDACRIS L17

CLRS EMOJI 703E

OMF TIME LESS B100

CLRS CARIA 520 C

SCAN DATA Adj. IMF: 2.75 • Adj. BF: 0.14 • Adj. REA: 17.18 HOMO POLLED • HOMO BLACK

CE	BW	WW	YW	ADG	MCE	MLK	MW	STY	DOC	CW	YG	MRB	BF	REA	API	TI
7.6	2.7	89.6	139.6	0.31	4.2	20.9	65.7	12.8	20.1	50.4	-0.28	0.12	-0.059	0.93	123.2	83.7

- If you need depth of body with sharp eye appeal, N5071 needs to be on your short list. This purebred son of OMF Ludacris L17 is stout hipped, carries that punch to his lower quarter, and ties it all together in a package you will love having in your front pasture.
- Backed by an impressive donor dam, CLRS Emoji 703E. She will give you a herd sire that brings the quality level up a notch.
- Another member of this sire's squad measured a noteworthy weaning weight, as his adjusted weaning weight is 745 lb.
- His EPD profile is lit up with top end growth numbers as well as strong DOC.
- N5071 is homozygous black and homozygous polled.
- Top 1% DOC; Top 10% CW; Top 15% YW, ADG; Top 20% WW; Top 35% REA.

Lot 37

HANELS LUDACRIS N5072

4537028

BW: 85 • Adj. WW: 745 • Scan WT: 1140

PB SM • 1/11/25

SIRE KCC1 COUNTERTIME 872H

DAM CLRS CONSTITUTION 311 C

OMF LUDACRIS L17

CLRS EMOJI 703E

OMF TIME LESS B100

CLRS CARIA 520 C

SCAN DATA Adj. IMF: 2.15 • Adj. BF: 0.19 • Adj. REA: 16.2 HOMO POLLED • HOMO BLACK

CE	BW	WW	YW	ADG	MCE	MLK	MW	STY	DOC	CW	YG	MRB	BF	REA	API	TI
7.4	3.2	91.5	139.1	0.3	4.3	20.9	66.6	18.6	18.4	52.6	-0.26	0.33	-0.052	0.96	145.3	89.1

- Hanel Ludacris N5072 keeps the movement of purebred power bulls going strong through this sire group.
- Donor dam CLRS Emoji 703E landed several sons in this offering. They will be easy to find, as they are studs.
- A loaded genetic package when you study his figures: growth, carcass, and convenience traits all in one impressive bull.
- N5072 is homozygous black and homozygous polled.
- Top 2% DOC; Top 10% CW; Top 15% WW; Top 20% YW, ADG, STAY; Top 30% MARB, REA, TI; Top 35% API.

THE LUDACRIS SIRE GROUP

Lot 38

HANELS LUDACRIS N5086

4537188

GGP

BW: 83 • Adj. WW: 693 • Scan WT: 1167

PB SM • 1/15/25

SIRE KCC1 COUNTERTIME 872H

DAM CLRS DIVIDEND 405D

OMF LUDACRIS L17

HANELS MISS DIVIDEND G9133

OMF TIME LESS B100

HANELS MISS BET A3014

SCAN DATA Adj. IMF: 2.55 • Adj. BF: 0.19 • Adj. REA: 15.19

CE	BW	WW	YW	ADG	MCE	MLK	MW	STY	DOC	CW	YG	MAR	BF	REA	API	TI
12.1	0.7	83.1	124.8	0.26	4	20.7	62.2	19.7	13.4	23.8	-0.17	0.22	-0.032	0.48	147.8	84.5

- N5086 is an OMF Ludacris L17 son from a hard-working daughter of CLRS Dividend 405D.
- A solid performing prospect who offers little sacrifice in phenotypic quality.
- A high API purebred bull that should not be overlooked.
- Top 10% STAY; Top 30% CE, DOC, API.

Lot 39

HANELS LUDACRIS N5088

4537016

GGP

BW: 88 • Adj. WW: 707 • Scan WT: 1176

PB SM • 1/15/25

SIRE KCC1 COUNTERTIME 872H

DAM HANELS CAPITALIST F8102

OMF LUDACRIS L17

HANELS MISS CAPITALIST H0146

OMF TIME LESS B100

HANELS MISS CUT F8045

SCAN DATA Adj. IMF: 2.28 • Adj. BF: 0.19 • Adj. REA: 15.3

CE	BW	WW	YW	ADG	MCE	MLK	MW	STY	DOC	CW	YG	MAR	BF	REA	API	TI
11.8	1.5	83.1	129.6	0.29	3	23.5	65	19.7	16	26.5	-0.18	0.29	-0.033	0.53	150.8	85.9

- Another purebred from the stout lineup of L17 sons, N5088 weighed in at over 700 lbs. on his adjusted weaning weight.
- A candidate for siring some quality SimAngus females when you study his DOC, STAY, and API rankings.
- Top 10% DOC; Top 15% STAY; Top 25% ADG, API; Top 30% CE, YW; Top 35% MARB.

Lot 40

HANELS LUDACRIS N5083

4537053

GGP

BW: 84 • Adj. WW: 690 • Scan WT: 1186

PB SM • 1/14/25

SIRE KCC1 COUNTERTIME 872H

DAM KBHR HIGH ROAD E283

OMF LUDACRIS L17

HANELS MISS HIGH ROAD K2015

OMF TIME LESS B100

HANELS MISS CAP E7045

SCAN DATA Adj. IMF: 4.03 • Adj. BF: 0.26 • Adj. REA: 14.66

CE	BW	WW	YW	ADG	MCE	MLK	MW	STY	DOC	CW	YG	MAR	BF	REA	API	TI
13.2	-1.5	75.6	110.1	0.22	5.5	22.5	60.2	21.5	11.6	28.9	-0.12	0.49	-0.021	0.45	167.5	89.1

- Hanel Ludacris N5083 is a rock-solid bull that should not be overlooked.
- His dam, K2015, is a KBHR High Road E283 daughter who is showing promise early in her breeding career.
- This bull does a lot well genetically, as evidenced by his high API and TI ranks.
- Top 4% STAY; Top 10% BW, API; Top 15% MARB; Top 20% CE; Top 30% TI.



KBHR HIGH ROAD E283 - MATERNAL GRANDSIRE OF LOT 40

Lot 41

HANELS LUDACRIS N5104

4537036

GGP

BW: 93 • Adj. WW: 759 • Scan WT: 1299

PB SM • 1/18/25

SIRE KCC1 COUNTERTIME 872H

DAM HOOK'S BLACK HAWK 50B

OMF LUDACRIS L17

HANELS MISS BLACK HAWK J1035

OMF TIME LESS B100

HANELS MISS DIVIDEND G9133

SCAN DATA Adj. IMF: 2.42 • Adj. BF: 0.28 • Adj. REA: 15.48

CE	BW	WW	YW	ADG	MCE	MLK	MW	STY	DOC	CW	YG	MAR	BF	REA	API	TI
10	1	91.5	138.2	0.29	2.8	19.9	65.6	17.9	15.8	41.5	-0.17	0.19	-0.022	0.76	142.8	88.2

- The final purebred OMF Ludacris L17 son is a scale crushing power bull with plenty of gas in the tank.
- A whopping 759 lb. adjusted weaning weight is the calling card of his performance sheet.
- N5104 is a high growth, high API stud that meets many needs in his genetic profile.
- Top 10% DOC; Top 15% WW; Top 20% YW; Top 25% ADG, STAY, CW; Top 30% TI; Top 35% API.

Lot 42

HANELS LUDACRIS N5094

4537065

GGP

BW: 89 • Adj. WW: 708 • Scan WT: 1161

5/8 SM 3/8 AN • 1/17/25

SIRE KCC1 COUNTERTIME 872H

DAM CONNEALY BLACKHAWK 6198

OMF LUDACRIS L17

HANELS MISS BLACKHAWK K2042

OMF TIME LESS B100

HANELS MISS 2020 H0061

SCAN DATA Adj. IMF: 2.76 • Adj. BF: 0.16 • Adj. REA: 15.4

CE	BW	WW	YW	ADG	MCE	MLK	MW	STY	DOC	CW	YG	MAR	BF	REA	API	TI
2.7	2.5	88.2	137.9	0.31	2.3	22.6	66.9	15.2	16.1	47.1	-0.28	0.49	-0.074	0.77	128.3	86.5

- Rounding out the sire offering is a high percentage powerhouse backed by a young mother with potential to do big things here.
- Weighed in at 708 lb. adjusted weaning weight. This dude will have calves that mash down the scales.
- His EPD profile suggests that he will contribute carcass quality and growth to a calf crop.
- Top 10% DOC; Top 15% ADG, CW, MARB; Top 20% YW; Top 25% WW; Top 35% TI.

THE JOURNEYMAN SIRE GROUP



OMF JOURNEYMAN J24 - SIRE OF LOTS 43 & 44

- Hanel's Journeyman N5109 is part of a pair of purebred OMF Journeyman J24 sons, both out of the donor matron CCS/UDE Summer 22H that is a direct daughter of the iconic WHF Summer 365C donor that has produced over \$1 million in progeny sales.
- N5109 is the more modest birth option of the brothers, while still maintaining plenty of growth and performance to weaning.
- A big data set here that is driven by powerful growth figures.
- N5109 is homozygous black and homozygous polled.
- Top 10% CW; Top 15% WW, YW, ADG, FAT; Top 25% TI; Top 30% MARB, MCE, DOC; Top 35% REA.



WHF SUMMER 365C - MATERNAL GRANDDAM OF LOTS 43 & 44

- Next in the pair of purebred OMF Journeyman J24 x CCS/UDE Summer 22H brothers is N5110, the higher individual performer of the pair.
- His 758 lb. adjusted weaning weight ranks in the top cut of the entire set of yearling sale bulls.
- His genetic data supports his performance, ranking among the breed's best for WW, YW, and ADG. He is a powerful growth bull that is loaded with power!
- N5110 is homozygous black and homozygous polled.
- Top 10% WW, YW, ADG; Top 25% FAT; Top 30% YG; Top 35% REA, TI.

Lot 43

HANELS JOURNEYMAN N5109

GGP

4537043

BW: 83 • Adj. WW: 710 • Scan WT: 1213

PB SM • 1/19/25

SIRE MR SR MIC DROP G1534
OMF JOURNEYMAN J24
OMF DEKA D23

DAM CDI INNOVATOR 325D
CCS/UDE SUMMER 22H
WHF SUMMER 365C

SCAN DATA Adj. IMF: 4.06 • Adj. BF: 0.18 • Adj. REA: 15.39 HOMO POLLED • HOMO BLACK

CE	BW	WW	YW	ADG	MCE	MLK	MW	STY	DOC	CW	YG	MARB	BF	REA	API	TI
7.7	2.3	91.4	140.7	0.31	6.9	20.5	66.1	12.1	13.5	51	-0.34	0.31	-0.087	0.93	133.9	90.2

Lot 44

HANELS JOURNEYMAN N5110

GGP

4537175

BW: 95 • Adj. WW: 758 • Scan WT: 1350

PB SM • 1/19/25

SIRE MR SR MIC DROP G1534
OMF JOURNEYMAN J24
OMF DEKA D23

DAM CDI INNOVATOR 325D
CCS/UDE SUMMER 22H
WHF SUMMER 365C

SCAN DATA Adj. IMF: 3.92 • Adj. BF: 0.25 • Adj. REA: 15.1 HOMO POLLED • HOMO BLACK

CE	BW	WW	YW	ADG	MCE	MLK	MW	STY	DOC	CW	YG	MARB	BF	REA	API	TI
6.8	1.3	94.2	149.8	0.35	5.1	20.5	67.6	15.8	10.8	36.1	-0.4	0.03	-0.081	0.95	129.2	86.7

THE GOLD RUSH SIRE GROUP

Lot 45



- Hanel's Gold Rush N5045 strikes quite the pose on the profile. The purebred son of TJ Gold Rush 506K is smooth in his front-end design, level in his top and hip, and carries a powerful quarter. He will catch your attention.
- Carries a solid birth to weaning performance spread, faring well in this offering for both traits.
- His dam comes from the renowned Schaake Farms breeding program and has done a solid job in our herd.
- He will work to improve a myriad of traits, specializing in calving ease. His API and TI combination will be well received in this offering.
- N5045 is homozygous black and homozygous polled.
- Top 10 % CE, BW; Top 15% MCE, API; Top 20% ADG, STAY, TI; Top 25% YW, MARB; Top 30% WW, CW.

Lot 45

HANELS GOLD RUSH N5045

GGP

4536996

BW: 80 • Adj. WW: 706 • Scan WT: 1274

PB SM • 1/7/25

SIRE TJ GOLD 274G
TJ GOLD RUSH 506K
TJ 59H

DAM WLE COPACETIC E02
SFI MISS DYNASTY H2A
SFI MISS TWO TIMEN

SCAN DATA Adj. IMF: 3.93 • Adj. BF: 0.19 • Adj. REA: 16.53 **HOMO POLLED • HOMO BLACK**

CE	BW	WW	YW	ADG	MCE	MLK	MW	STY	DOC	CW	YG	MARB	BF	REA	API	TI
14.9	-2	86.6	134.1	0.3	8.4	17.5	60.6	18.1	7.8	40.7	-0.29	0.34	-0.067	0.78	162.8	93.8



TJ GOLD RUSH 506K - SIRE OF LOTS 45-52

THE GOLD RUSH SIRE GROUP



MR SR HIGHLIFE G1609 - MATERNAL GRANDSIRE OF LOTS 48 & 49

Lot 46

GGP

HANELS GOLD RUSH N5174

4537130

BW: 89 • Adj. WW: 715 • Scan WT: 1253

PB SM • 2/9/25

SIRE TJ GOLD 274G
TJ GOLD RUSH 506K
TJ 59H

DAM HANELS COWBOY CUT H0219
HANELS MISS COWBOY CUT L3167
HANELS MISS BEEF F8189

SCAN DATA Adj. IMF: 2.69 • Adj. BF: 0.26 • Adj. REA: 15.74

CE	BW	WW	YW	ADG	MCE	MLK	MW	STY	DOC	CW	YG	MRB	BF	REA	API	TI
11.9	0.2	87.7	129.1	0.26	7.8	19.8	63.6	22.4	8.8	36.1	-0.3	0.37	-0.058	0.83	164.1	92

- N5174 is another purebred TJ Gold Rush 506K son that checks off most of the boxed for performance and genetic merit.
- His dam is a daughter of Hanel's Cowboy Cut H0219 who raised this guy successfully on her first calving.
- An incredible marbling sire option with an astounding IMF Ratio at 173!
- He's a solid 715 lb. adjusted weaning weight bull.
- Another multi-trait excellence bull with high API and TI.
- Top 3% STAY; Top 15% API; Top 20% MCE, TI; Top 25% WW, MARB; Top 30% CE, BW, YW.

Lot 48

GGP

HANELS GOLD RUSH N5089

4537100

BW: 81 • Adj. WW: 704 • Scan WT: 1255

PB SM • 1/15/25

SIRE TJ GOLD 274G
TJ GOLD RUSH 506K
TJ 59H

DAM MR SR HIGHLIFE G1609
HANELS MISS HIGHLIFE L3032
HANELS MISS TEN F8026

SCAN DATA Adj. IMF: 3.1 • Adj. BF: 0.19 • Adj. REA: 15.44

CE	BW	WW	YW	ADG	MCE	MLK	MW	STY	DOC	CW	YG	MRB	BF	REA	API	TI
14.3	-0.5	93.5	140.1	0.29	10	20	66.7	16.4	12.3	49.8	-0.32	0.11	-0.068	0.98	145	90.4

- A cool kind of calving ease prospect out of a MR SR Highlife G1609 two-year-old daughter.
- These purebred TJ Gold Rush 506K sons would be ideal as a group for covering large groups of heifers, offering easy calving and calf crop uniformity.
- A big data sheet on this guy that showcases both calving ease and growth.
- Top 3% MCE; Top 10% CW; Top 15% CE, WW; Top 20% YW; Top 25% ADG, TI; Top 30% REA; Top 35% API.

Lot 47

GGP

HANELS GOLD RUSH N5113

4537109

BW: 74 • Adj. WW: 677 • Scan WT: 1122

PB SM • 1/19/25

SIRE TJ GOLD 274G
TJ GOLD RUSH 506K
TJ 59H

DAM HOOK'S BLACK HAWK 50B
HANELS MISS BLACK HAWK L3076
HANELS MISS PROCLAMATION J1125

SCAN DATA Adj. IMF: 4.18 • Adj. BF: 0.26 • Adj. REA: 15.98

CE	BW	WW	YW	ADG	MCE	MLK	MW	STY	DOC	CW	YG	MRB	BF	REA	API	TI
17	-4.2	75.8	113.7	0.24	10	18.6	56.4	21	12.8	44.2	-0.12	0.47	0.006	0.88	175.8	92.3

- TJ Gold Rush 506K was successfully utilized for calving ease in our young heifers, and the results are exciting to see with sons like N5113.
- His dam is a first-calving daughter of the popular Hook's Black Hawk 50B.
- Only 74 lb. at birth with elite CE and BW EPD rankings showcase his calving ease success.
- One of the top API bulls in the entire sale, N5113 excels for several traits across the board. He is a big marbling herd sire prospect with an IMF Ratio at 134.
- Top 1% BW; Top 3% MCE; Top 4% CE; Top 5% STAY, API; Top 15% MARB; Top 20% CW, TI; Top 35% DOC.



THE GOLD RUSH SIRE GROUP



OMF EPIC E27 - MATERNAL GRANDSIRE OF LOT 50

Lot 49

HANELS GOLD RUSH N5107

GGP

4537094

BW: 75 • Adj. WW: 750 • Scan WT: 1289

PB SM • 1/19/25

SIRE TJ GOLD 274G
TJ GOLD RUSH 506K
TJ 59H

DAM MR SR HIGHLIFE G1609
HANELS MISS HIGHLIFE L3020
HANELS MISS PAY DIRT H0177

SCAN DATA Adj. IMF: 2.74 • Adj. BF: 0.25 • Adj. REA: 15.89

CE	BW	WW	YW	ADG	MCE	MLK	MW	STY	DOC	CW	YG	MRB	BF	REA	API	TI
15	-1.9	88.9	140	0.32	10.6	22.5	66.8	24.7	8.9	54.8	-0.25	0.17	-0.066	0.86	167.6	91.3

- Bred on the same cross as N5089, N5107 is another solid purebred TJ Gold Rush 506K sired out of a young MR SR Highlife G1609 daughter.
- Curve bending individual performance: from a 75 lb. birth weight up to a 750 lb. adjusted weaning weight that tops this sire group.
- He is a strong candidate for siring keeper females with his STAY and MCE ratings. Plus, can be used on heifers and produce some added pounds of product.
- Top 1% STAY; Top 2% MCE; Top 5% CW; Top 10% CE, BW, API; Top 15% ADG; Top 20% WW, YW; Top 25% TI.

Lot 50

HANELS GOLD RUSH N5175

GGP

4537104

BW: 88 • Adj. WW: 705 • Scan WT: 1331

PB SM • 2/10/25

SIRE TJ GOLD 274G
TJ GOLD RUSH 506K
TJ 59H

DAM OMF EPIC E27
HANELS MISS EPIC L3048
HANELS MISS PAY DIRT G9138

SCAN DATA Adj. IMF: 4.9 • Adj. BF: 0.19 • Adj. REA: 16.27

CE	BW	WW	YW	ADG	MCE	MLK	MW	STY	DOC	CW	YG	MRB	BF	REA	API	TI
9.7	1.2	87	129.9	0.27	7.9	21.7	65.1	21.3	10.8	45.2	-0.2	0.37	-0.028	0.85	156.8	89.8

- A more powerful package from the TJ Gold Rush 506K contingent.
- Dam is a two-year-old daughter of the breed leading OMF Epic E27.
- Like his brothers, N5175 offers multi trait genetic improvement based on his EPD profile.
- Top 4% STAY; Top 15% CW; Top 20% MCE, API; Top 25% WW, MARB, TI; Top 30% YW; Top 35% ADG.



THE GOLD RUSH SIRE GROUP



WS PROCLAMATION E202 - MATERNAL GRANDSIRE OF LOT 51

Lot 51

HANELS GOLD RUSH N5190

GGP
4537048

BW: 85 • Adj. WW: 733 • Scan WT: 1258

PB SM • 2/21/25

SIRE TJ GOLD 274G
TJ GOLD RUSH 506K
TJ 59H

DAM WS PROCLAMATION E202
HANELS MISS PROCLAMATION J1184
HANELS MISS HUMMER Y1206

SCAN DATA Adj. IMF: 1.85 • Adj. BF: 0.19 • Adj. REA: 16.21

CE	BW	WW	YW	ADG	MCE	MLK	MW	STY	DOC	CW	YG	MRB	BF	REA	API	TI
11.4	-1	76	112.2	0.23	7.2	20.4	58.3	18.2	14.2	47.4	-0.33	0.14	-0.067	1	140.2	80.8

- His impressive 733 lb. adjusted weaning weight was one of the best among the TJ Gold Rush 506K sons.
- Genetic data indicates that this purebred should still be safe to use in breeding larger heifers or adding calving ease into mature cows.
- Top 15% BW, CW; Top 25% MCE, STAY, DOC; Top 30% REA; Top 35% CE.

Lot 52

HANELS GOLD RUSH N5047

GGP
4537113

BW: 87 • Adj. WW: 710 • Scan WT: 1266

3/4 SM 1/4 AN • 1/7/25

SIRE TJ GOLD 274G
TJ GOLD RUSH 506K
TJ 59H

DAM DEER VALLEY OPTIMUM 9246
HANELS MISS OPTIMUM L3100
HANELS MISS HUMMER X040

SCAN DATA Adj. IMF: 3.38 • Adj. BF: 0.26 • Adj. REA: 16.28 HOMO BLACK

CE	BW	WW	YW	ADG	MCE	MLK	MW	STY	DOC	CW	YG	MRB	BF	REA	API	TI
14.5	-0.1	93.3	148	0.34	10	21.7	68.2	17.4	11.9	68.5	-0.06	0.54	-0.016	0.81	156.8	95.1

- Hanel Gold Rush N5047 rounds out the TJ Gold Rush 506K as a really nice three-quarter blood herd sire prospect.
- If you liked the Deer Valley Optimum 9246 sire group earlier, take note here: His dam is a young half-blood sired by that impressive Angus bull.
- Carries a loaded data set with an added shot of power compared to his brothers in the sire group.
- N5047 is homozygous black.
- Top 1% CW; Top 3% MCE; Top 10% YW, ADG, MARB; Top 15% CE, WW, TI; Top 20% API; Top 30% BW; Top 35% STAY.



THE TEN PLUS SIRE GROUP

Lot 53



- Hanels Ten Plus N5032 carries added depth of body, a strong level top, and the look and presence of a herd bull with a bright future. You will like this half-blood SimAngus.
- One of the biggest curve benders in the sale for individual performance, from a 75 lb. birth weight to a massive 796 lb. weaning weight.
- Ranks in the top of the breed for several key EPDs, making him an enticing option for those that closely study the numbers.
- Top 1% CW; Top 2% ADG; Top 4% MCE; Top 10% YW, MARB; Top 20% TI; Top 25% WW; Top 30% BW, DOC, API; Top 35% CE, MILK.

Lot 53

HANELS TEN PLUS N5032

GGP

4537125

BW: 75 • Adj. WW: 796 • Scan WT: 1290

1/2 SM 1/2 AN • 1/3/25

SIRE MGR TREASURE

DAM HANELS COWBOY CUT H0219

HANELS TEN PLUS K2002

HANELS MISS COWBOY CUT L3151

HANELS MISS IDENTIFIED G9000

HANELS MISS PALE F8222

SCAN DATA Adj. IMF: 5.01 • Adj. BF: 0.21 • Adj. REA: 16.07

CE	BW	WW	YW	ADG	MCE	MLK	MW	STY	DOC	CW	YG	MRB	BF	REA	API	TI
10.9	0	88	149.2	0.38	9.9	25.8	75	13.6	13.6	62.4	0.04	0.6	0.001	0.58	146.6	93.2



HANELS TEN PLUS K2002 - SIRE OF LOTS 53-57



THE TEN PLUS SIRE GROUP

Lot 54

HANELS TEN PLUS N5049

GGP

4573175

BW: 77 • Adj. WW: 691 • Scan WT: 1226

1/2 SM 1/2 AN • 1/7/25

SIRE MGR TREASURE

HANELS TEN PLUS K2002

HANELS MISS IDENTIFIED G9000

DAM HANELS COWBOY CUT D6208

HANELS MISS COWBOY CUT K2221

HANELS MISS TANKER A3242

SCAN DATA Adj. IMF: 4.11 • Adj. BF: 0.32 • Adj. REA: 14.97

CE	BW	WW	YW	ADG	MCE	MLK	MW	STY	DOC	CW	YG	MRB	BF	REA	API	TI
14.9	-1	86.2	145.8	0.37	10.1	27.5	75.9	18.2	14.1	49.7	-0.05	0.62	0.013	0.77	163.7	95

- A calving ease half-blood SimAngus opportunity with his 77 lb. birth weight and top 10% CE ranking.
- N5049's mother is sired by a cornerstone of the modern-day breeding program, Hanel Cowboy Cut D6208.
- More than just a heifer breeding bull when you study his data. His API and TI are impressive, along with growth and carcass traits.
- Top 3% ADG, MCE; Top 10% CE, YW, CW, MARB; Top 15% BW, API, TI; Top 25% STAY, DOC; Top 30% WW, MILK.



HANELS FIRESTEEL M4029 - MATERNAL BROTHER TO LOT 54

Lot 55

HANELS TEN PLUS N5061

GGP

4537193

BW: 84 • Adj. WW: 602 • Scan WT: 1106

1/2 SM 1/2 AN • 1/8/25

SIRE MGR TREASURE

HANELS TEN PLUS K2002

HANELS MISS IDENTIFIED G9000

DAM HANELS COWBOY CUT D6208

HANELS COWBOY CUT G9521

HANELS MISS BEACON E7505

SCAN DATA Adj. IMF: 3.54 • Adj. BF: 0.39 • Adj. REA: 13.87

CE	BW	WW	YW	ADG	MCE	MLK	MW	STY	DOC	CW	YG	MRB	BF	REA	API	TI
10.5	-0.2	79.1	131	0.32	9.9	23.3	68.1	14	13.6	49.5	0.14	0.66	0.04	0.41	145.5	88.4

- Hanel Ten Plus N5061 shouldn't be overlooked as a quality half-blood SimAngus bred on the exact successful cross as N5049.
- Another data sheet worth studying, as he carries some of the highest MARB in the entire sale.
- Top 3% MCE; Top 4% MARB; Top 10% CW; Top 15% ADG; Top 30% BW, YW, DOC, TI; Top 35% API.



HANELS TEN PLUS M4057 - FULL BROTHER TO LOT 55

Lot 56

HANELS TEN PLUS N5062

GGP

4573173

BW: 89 • Adj. WW: 694 • Scan WT: 1229

3/8 SM 5/8 AN • 1/8/25

SIRE MGR TREASURE

HANELS TEN PLUS K2002

HANELS MISS IDENTIFIED G9000

DAM HANELS UNITED F8133

HANELS MISS UNITED H0108

HANELS MISS FREE B4207

SCAN DATA Adj. IMF: 4.85 • Adj. BF: 0.32 • Adj. REA: 15.41

CE	BW	WW	YW	ADG	MCE	MLK	MW	STY	DOC	CW	YG	MRB	BF	REA	API	TI
10	1.1	84	147.7	0.4	9.5	28.7	76.1	17.1	12.2	61.6	0.13	0.66	0.025	0.48	149.3	89.3

- N5062 is a low percentage Simmental prospect with a balanced performance sheet.
- He is the kind of bull stockmen will appreciate for being well built and hard to find major fault in.
- Another big data bull that cattle feeders will love the calves out of. They will grow, gain, and grade!
- Top 1% ADG; Top 2% CW; Top 4% MCE, MARB; Top 10% YW; Top 20% MILK; Top 30% API, TI; Top 35% WW, STAY.



THE YEARLING BULLS



Lot 57

HANELS TEN PLUS N5048

GGP

4537074

BW: 80 • Adj. WW: 665 • Scan WT: 1213

1/2 SM 1/2 AN • 1/7/25

SIRE MGR TREASURE

HANELS TEN PLUS K2002

HANELS MISS IDENTIFIED G9000

DAM KBHR HIGH ROAD E283

HANELS MISS HIGH ROAD K2089

M4 MS BIRTHSTONE H85T

SCAN DATA Adj. IMF: 4.35 • Adj. BF: 0.34 • Adj. REA: 14.63 HOMO POLLED

CE	BW	WW	YW	ADG	MCE	MLK	MW	STY	DOC	CW	YG	MRB	BF	REA	API	TI
13.3	-1.8	79.2	141.8	0.39	10.4	24.6	69.5	14.2	13.9	38.8	0.12	0.79	0.03	0.24	162.1	95.2

- The finale of the Hanel Ten Plus K2002 sire group is a half-blood SimAngus from a young KBHR High Road E283 daughter.
- A top-of-the-line prospect for adding a shot of marbling into a calf crop, while maintaining other traits of importance.
- He's got an impressive combination of API and TI to study as well.
- N5048 is homozygous polled.
- Top 1% ADG; Top 2% MARB; Top 3% MCE; Top 10% BW; Top 15% CE, YW, API, TI; Top 25% DOC; Top 30% CW.

Lot 58

HANELS HIGH NOON N5101

GGP

4537086

BW: 87 • Adj. WW: 656 • Scan WT: 1103

PB SM • 1/17/25

SIRE KBHR HIGH ROAD E283

HANELS HIGH NOON K2504

HANELS MISS COWBOY CUT H0537

DAM HANELS COWBOY CUT D6208

HANELS MISS COWBOY CUT K2213

TJ MISS 592E

SCAN DATA Adj. IMF: 3.35 • Adj. BF: 0.25 • Adj. REA: 14.42

CE	BW	WW	YW	ADG	MCE	MLK	MW	STY	DOC	CW	YG	MRB	BF	REA	API	TI
9.8	0.9	75.6	112.1	0.23	6.7	21.2	59	18.4	15.1	40.8	-0.18	0.25	-0.03	0.75	140.6	80.2

- The leadoff batter in the Hanel High Noon K2504 sire group in N5101, a balanced, high phenotypic quality sire prospect that is purebred.
- His young dam K2213 is another nice young cow sired by Hanel Cowboy Cut D6208.
- He is a solid bull that just doesn't miss the mark physically or in his other attributes.
- Top 15% DOC; Top 20% STAY; Top 30% CW; Top 35% MCE.

Lot 59

HANELS HIGH NOON N5102

GGP

4537164

BW: 81 • Adj. WW: 759 • Scan WT: 1247

PB SM • 1/17/25

SIRE KBHR HIGH ROAD E283

HANELS HIGH NOON K2504

HANELS MISS COWBOY CUT H0537

DAM HOOK'S BEACON 56B

HANELS MISS BEACON E7036

HANELS MISS LEGEND C5014

SCAN DATA Adj. IMF: 3.15 • Adj. BF: 0.19 • Adj. REA: 18.51

CE	BW	WW	YW	ADG	MCE	MLK	MW	STY	DOC	CW	YG	MRB	BF	REA	API	TI
13.8	-1.8	77.6	116.4	0.24	9.2	26.6	65.3	15.5	12.4	34.8	-0.41	0.31	-0.067	1.09	150.2	88.4

- The dam of N5102 is a proven Hook's Beacon 56B daughter who does a nice job annually. The maternal strength behind N5102 is second to none!
- The NUMBER 1 REA bull in the entire sale offering with an 18+ inch ribeye area to ratio at 115.
- His 759 lb. adjusted weaning weight will make you take notice.
- Curve bending genetics on his EPD profile from birth through finish.
- Top 10% BW, MCE; Top 15% CE, REA; Top 25% YG, API; Top 30% MILK, MARB, TI.



HANELS HIGH NOON K2504 - SIRE OF LOTS 58-63



HOOK'S BEACON 56B - MATERNAL GRANDSIRE OF LOT 59

THE HIGH NOON SIRE GROUP

Lot 60

HANELS HIGH NOON N5112

GGP
4537143

BW: 84 • Adj. WW: 699 • Scan WT: 1185

PB SM • 1/19/25

SIRE KBHR HIGH ROAD E283
HANELS HIGH NOON K2504

DAM GW PREMIUM BEEF 021TS
HANELS MISS BEEF C5004

HANELS MISS COWBOY CUT H0537

HANELS MISS NLC Z2230

SCAN DATA Adj. IMF: 2.36 • Adj. BF: 0.39 • Adj. REA: 15.83

CE	BW	WW	YW	ADG	MCE	MLK	MW	STY	DOC	CW	YG	MRB	BF	REA	API	TI
15.3	-1.5	66.1	102.7	0.23	7.5	24.2	57.2	19.2	14.4	28	-0.39	0.22	-0.057	1	150.2	79

- His EPD sheet reads as a calving ease cow maker with his high marks for CE, BW, STAY, and DOC.
- Top 10% CE; Top 15% BW, STAY; Top 20% DOC; Top 25% MCE, REA, API; Top 35% YG.

Lot 61

HANELS HIGH NOON N5149

GGP
4537145

BW: 85 • Adj. WW: 676 • Scan WT: 1191

3/4 SM 1/4 AN • 1/31/25

SIRE KBHR HIGH ROAD E283
HANELS HIGH NOON K2504

DAM S A V ANGUS VALLEY 1867
HANELS MISS VALLEY C5020

HANELS MISS COWBOY CUT H0537

HANELS MISS OLIE Z2058

SCAN DATA Adj. IMF: 2.73 • Adj. BF: 0.3 • Adj. REA: 15.81

CE	BW	WW	YW	ADG	MCE	MLK	MW	STY	DOC	CW	YG	MRB	BF	REA	API	TI
12.4	-0.6	79.6	126.3	0.29	7.5	19.4	59.2	13.1	13.1	48.3	-0.09	0.19	-0.018	0.63	121.3	78

- Another balanced Hanel's High Noon K2504 who will keep you out of the ditches and moving toward your herd goals, this time in a three-quarter blood package.
- Dam is a proven "C model" cow who has done well in her productive career.
- His EPD profile suggest curve bending growth genetics from low birth to strong YW.
- Top 10% CW; Top 20% BW, MCE; Top 25% CE, ADG; Top 35% YW, DOC.

Lot 62

HANELS HIGH NOON N5169

GGP
4537171

BW: 82 • Adj. WW: 628 • Scan WT: 1161

3/4 SM 1/4 AN • 2/6/25

SIRE KBHR HIGH ROAD E283
HANELS HIGH NOON K2504

DAM LRS TOP TEN 104A
HANELS MISS TEN F8026

HANELS MISS COWBOY CUT H0537

ES X51

SCAN DATA Adj. IMF: 3.25 • Adj. BF: 0.26 • Adj. REA: 17

CE	BW	WW	YW	ADG	MCE	MLK	MW	STY	DOC	CW	YG	MRB	BF	REA	API	TI
10.2	-0.7	76.3	114.5	0.24	6.4	20.3	58.4	10.4	13.1	27.9	-0.19	0.22	-0.017	0.69	113	76.8

- Another three-quarter blood K2504 son with balanced performance and phenotypic build. His dam is a LRS Top Ten 104A who has earned her keep in our program.
- Utilize bulls like this to create quality cattle with an added punch of power in a crossbreeding program.
- Top 20% BW; Top 35% DOC.

Lot 63

HANELS HIGH NOON N5183

GGP
4537160

BW: 89 • Adj. WW: 684 • Scan WT: 1205

PB SM • 2/15/25

SIRE KBHR HIGH ROAD E283
HANELS HIGH NOON K2504

DAM HANELS AXIS A3012
HANELS MISS AXIS D6168

HANELS MISS COWBOY CUT H0537

HANELS MISS OLIE Y1025

SCAN DATA Adj. IMF: 2.56 • Adj. BF: 0.22 • Adj. REA: 14.14

CE	BW	WW	YW	ADG	MCE	MLK	MW	STY	DOC	CW	YG	MRB	BF	REA	API	TI
10.3	0.3	79	121.6	0.27	7	20.6	60.1	16.9	13.2	51.9	-0.37	-0.03	-0.071	1.14	127	77.1

- N5183 is a purebred prospect to round out the Hanel's High Noon K2504 yearling bull sire offering.
- Posted a solid adjusted weaning weight among this sire cohort.
- Can move you forward for several traits, particularly in the carcass yield realm.
- Top 10% CW, REA; Top 30% MCE; Top 35% BW, STAY, DOC.



LRS TOP TEN 104A - MATERNAL GRANDSIRE OF LOT 62

THE DILIGENCE SIRE GROUP

Lot 64



HANELS HIGHLIFE M4082 - MATERNAL BROTHER TO DAM OF LOT 64

Lot 64

HANELS DILIGENCE N5077

GGP

4537062

BW: 88 • Adj. WW: 742 • Scan WT: 1301

PB SM • 1/12/25

SIRE LCDR FAVOR 149F
LCDR DILIGENCE 215J
LCDR MS GIA 5G

DAM HOOK'S BLACK HAWK 50B
HANELS MISS BLACK HAWK K2034
HANELS MISS CAPITALIST H0146

SCAN DATA Adj. IMF: 3.04 • Adj. BF: 0.28 • Adj. REA: 15.44

CE	BW	WW	YW	ADG	MCE	MLK	MW	STY	DOC	CW	YG	MRB	BF	REA	API	TI
10	-0.7	91.3	141.2	0.31	3.7	21	66.6	18.3	15.7	46.3	-0.17	0.47	-0.009	0.93	162.5	97.3

- Hanel Diligence N5077 is a powerfully constructed purebred Simmental that is massive from all angles. He is loaded with muscle mass, capacity, and herd bull characteristics.
- Only a handful of LCDR Diligence 215J sons in the sale, but they are good ones!
- Mashed the scales down for a 742 lb. adjusted weaning weight.
- A leading bull for TI in this yearling sale group, with growth and carcass traits near the top of the breed.
- Top 10% TI; Top 15% YW, ADG, DOC, CW, MARB, API; Top 20% BW, WW, STAY.

Lot 65

HANELS DILIGENCE N5065

GGP

4536998

BW: 92 • Adj. WW: 695 • Scan WT: 1269

PB SM • 1/10/25

SIRE LCDR FAVOR 149F
LCDR DILIGENCE 215J
LCDR MS GIA 5G

DAM CLRS DIVIDEND 405D
HANELS MISS DIVIDEND H0010
HANELS MISS TEN F8027

SCAN DATA Adj. IMF: 2.56 • Adj. BF: 0.19 • Adj. REA: 15.5

CE	BW	WW	YW	ADG	MCE	MLK	MW	STY	DOC	CW	YG	MRB	BF	REA	API	TI
4.2	2.9	95.2	148.9	0.34	2.2	17.4	64.9	13.1	15.1	49.8	-0.31	0.21	-0.069	0.95	126.9	88.4

- N5065 is another purebred prospect from the LCDR Diligence 215J, this one from a CLRS Dividend 405D dam.
- Take note of his strong rankings for WW and YW. He will pack the pounds on his calves!
- Top 10% WW, YW, ADG, CW; Top 15% DOC; Top 30% TI; Top 35% REA.

THE DILIGENCE SIRE GROUP

Lot 66



- N5085 is a sharp three-quarter blood Simmental that brings look and power together. Study the shape in his top and quarter, while noticing how smooth and correct he is built. He combines everything together so nicely.
- His young dam is a daughter of the popular Angus maternal sire MGR Treasure.
- Study his data and you will see he has a lot to offer, from his 717 lb. adjusted weaning weight to his loaded EPD profile.
- Top 2% ADG; Top 4% YW, CW; Top 10% WW; Top 15% MARB; Top 20% TI, MCE; Top 25% STAY, DOC; Top 35% API.

Lot 66

HANELS DILIGENCE N5085



4537057

BW: 89 • Adj. WW: 717 • Scan WT: 1244

3/4 SM 1/4 AN • 1/15/25

SIRE LCDR FAVOR 149F

DAM MGR TREASURE

LCDR DILIGENCE 215J

HANELS MISS TREASURE K2024

LCDR MS GIA 5G

HANELS MISS COWBOY CUT H0096

SCAN DATA Adj. IMF: 3.1 • Adj. BF: 0.21 • Adj. REA: 15.32

CE	BW	WW	YW	ADG	MCE	MLK	MW	STY	DOC	CW	YG	MARB	BF	REA	API	TI
8.1	1.9	96	156.9	0.38	7.8	22	70.4	17.7	13.9	56.1	-0.05	0.46	-0.004	0.72	143.3	91.7



LCDR DILIGENCE 215J - SIRE OF LOTS 64-66

THE YEARLING BULLS



HANELS POWER WAGON M4096 - MATERNAL BROTHER TO LOT 67



KBHR CHARGER K102 - SIRE OF LOT 68

Lot 67

GGP

HANELS FIREPROOF N5172

4537190

BW: 89 • Adj. WW: 702 • Scan WT: 1177

PB SM • 2/7/25

SIRE LCDR FIREPROOF 206H
HANELS FIREPROOF K2518
CCS/UDE SUMMER 22H

DAM HANELS COWBOY CUT D6208
HANELS MISS COWBOY CUT G9175
HANELS MISS NLC X029

SCAN DATA Adj. IMF: 2.72 • Adj. BF: 0.2 • Adj. REA: 17.5

CE	BW	WW	YW	ADG	MCE	MLK	MW	STY	DOC	CW	YG	MRB	BF	REA	API	TI
9.1	0.7	84.8	129.2	0.28	4.5	22	64.2	15.5	13.2	54.5	-0.33	0.14	-0.061	1.13	133.2	84.1

- A top shelf purebred Simmental herd sire prospect that offers unmatched substance and real-world performance. Notice his maternal grandsire is Hanel Cowboy Cut D6208.
- N5172 will be found by those who studied this offering closely.
- Showcases growth, gain, and carcass yield on his EPD profile.
- Top 5% CW; Top 10% REA; Top 30% ADG; Top 35% WW, YW, DOC.

Lot 68

GGP

HANELS CHARGER N5004

4537030

BW: 75 • Adj. WW: 674 • Scan WT: 1203

PB SM • 1/1/25

SIRE MR SR RED OCTOBER G1761
KBHR CHARGER K102
WS ELECTRA E88

DAM LCDR FIREPROOF 206H
M4 MS KEEP THE FAITH 810L
M4 MS REST ASSURED J810

SCAN DATA Adj. IMF: 3.35 • Adj. BF: 0.25 • Adj. REA: 14.28 HOMO POLLED • HETERO BLACK

CE	BW	WW	YW	ADG	MCE	MLK	MW	STY	DOC	CW	YG	MRB	BF	REA	API	TI
17.7	-3.7	73.8	111.9	0.24	7.4	25.5	62.3	17.1	15.3	38	-0.35	0.79	-0.047	1.09	186.5	100.4

- Came into this world with a birth weight of only 75 lb. and posted solid performance thereafter. A big-league data set that reads with loads of excellence for calving ease and maternal traits.
- N5004 is homozygous polled.
- Top 2% BW, MARB, API; Top 3% CE; Top 10% TI; Top 15% DOC, REA; Top 25% MCE; Top 35% MILK, CW, STAY



THE YEARLING BULLS



CCS/JS DOC 48H - SIRE OF LOT 69



HANELS DOC 4129 - FULL BROTHER TO LOT 69

Lot 69

HANELS DOC N5058

GGP

4537034

BW: 77 • Adj. WW: 624 • Scan WT: 1073

PB SM • 1/8/25

SIRE CDI INNOVATOR 325D
CCS/JS DOC 48H
WHF SUMMER 365C

DAM HART STATE OF WAR 056C
HANELS MISS STATE OF WAR J1024
TJ MISS 63F

SCAN DATA Adj. IMF: 3.3 • Adj. BF: 0.39 • Adj. REA: 13.19 HOMO POLLED • HOMO BLACK

CE	BW	WW	YW	ADG	MCE	MLK	MW	STY	DOC	CW	YG	MRB	BF	REA	API	TI
12.1	1.5	88.1	130.4	0.26	8.4	25.9	69.8	16.1	11.3	44.7	-0.14	0.27	-0.049	0.52	143.1	88

- The only CCS/JCS Doc 48H son in the sale is one that should not be overlooked for his quality and the backing of a nice young cow, J1024.
- Light 77 lb. at birth makes him an attractive commodity.
- A herd bull prospect that should work in many breeding situations when you study his genetic profile.
- N5058 is homozygous black and homozygous polled.
- Top 10% MCE; Top 20% CW; Top 25% WW; Top 30% CE, YW, TI; Top 35% MILK, MARB, API.

Lot 70

HANELS STRONG AND FREE N5091

GGP

4536995

BW: 79 • Adj. WW: 720 • Scan WT: 1095

3/4 SM 1/4 AN • 1/15/25

SIRE LLW CARD TRUE NORTH G71
WHEATLAND STRONG N FREE 231K
WHEATLAND LADY 182

DAM CLRS CONSTITUTION 311 C
CLRS EMOJI 703E
CLRS CARIA 520 C

SCAN DATA Adj. IMF: 2.39 • Adj. BF: 0.18 • Adj. REA: 15.4

CE	BW	WW	YW	ADG	MCE	MLK	MW	STY	DOC	CW	YG	MRB	BF	REA	API	TI
8.9	1.1	84.1	127.3	0.27	4	17.3	59.4	11.3	16.5	38.6	-0.25	0.24	-0.052	0.77	114.6	79.7

- A different twist on the top side of the pedigree with this three-quarter Simmental sired by the Canadian based Wheatland Strong N Free 231K.
- Dam CLRS Emoji 703E is a proven donor that you will see listed throughout this offering of yearling bulls.
- Posted a modest 79 lb. birth weight.
- Appreciate the outcross pedigree and the growth EPDs this bull has to offer.
- Top 10% DOC; Top 30% CW; Top 35% WW, YW, ADG.



TJ MISS 63F - MATERNAL GRANDDAM OF LOT 69



WHEATLAND STRONG N FREE 231K - SIRE OF LOT 70

THE AGE ADVANTAGED BULLS

Lot 71



HANELS HARDWOOD L3532 - MATERNAL BROTHER TO DAM OF LOT 71



MCC-PLG KINGPIN 319 - SIRE OF LOTS 71-86

Lot 71

HANELS KINGPIN M4517

GGP

4442412

BW: 86 • Scan Wt: 1510

PB SM • 8/19/24

SIRE OMF HARD RIGHT H21

DAM HANELS COWBOY CUT D6208

MCC-PLG KINGPIN 319

HANELS MISS COWBOY CUT H0556

W/C MISS WERNING 983G

HANELS MISS OLIE Z2205

SCAN DATA Adj. IMF: 3.45 • Adj. BF: 0.26 • Adj. REA: 16.99

CE	BW	WW	YW	ADG	MCE	MLK	MW	STY	DOC	CW	YG	MRB	BF	REA	API	TI
8	2	93.9	146.8	0.33	5.9	21.6	68.4	18.8	13	47.6	-0.34	0.09	-0.077	0.94	137.7	86.9

- What a way to lead off the Aged Bull division of the 2026 sale than with Hanel Kingpin M4517. A purebred son of MCC-PLG Kingpin 319, this stud is deep bodied, square built, and good from all angles. He is certainly a feature in this age class of herd sire prospects.
- The MCC-PLG Kingpin 319s dominate the fall yearling offering in quantity, and many of them will surface to the top of the class for their physical and genetic qualities.
- M4517 is one of a trio of bulls leading off this class whose dams are direct daughters of Hanel Cowboy Cut D6208.
- If you want to infuse added growth and power, M4517 needs to be on your short list.
- Top 10% WW, YW, ADG; Top 15% CW; Top 20% STAY; Top 25% FAT; Top 30% REA; Top 35% DOC, TI.

THE AGE ADVANTAGED BULLS

Lot 72

HANELS KINGPIN M4502

GGP

4442407

BW: 83 • Scan Wt: 1500

PB SM • 8/11/24

SIRE OMF HARD RIGHT H21

DAM HANELS COWBOY CUT D6208

MCC-PLG KINGPIN 319

HANELS MISS COWBOY CUT H0539

W/C MISS WERNING 983G

HANELS MISS BEACON D6203

SCAN DATA Adj. IMF: 3.89 • Adj. BF: 0.3 • Adj. REA: 17.17

CE	BW	WW	YW	ADG	MCE	MLK	MW	STY	DOC	CW	YG	MRB	BF	REA	API	TI
10.6	0.5	92.5	147.4	0.34	7.2	20.6	66.7	19.7	13	44.7	-0.3	0.24	-0.04	1.08	153.6	92

- M4502 is another purebred MCC-PLG Kingpin son with Hanel Cowboy Cut D6208 on the maternal grandsire line of the pedigree tree.
- This mating works well, and gathering up those similarly bred brothers to breed large groups would be considered a wise investment.
- A big data set that focuses on extra power, while adding strong API and TI to the mix.
- Top 10% YW, ADG; Top 15% WW, STAY, REA; Top 20% CW, TI; Top 25% API; Top 30% MCE; Top 35% BW, DOC.



W/C MISS WERNING 983G -
PATERNAL GRANDDAM OF LOTS 71-86



CCR COWBOY CUT 5048Z -
MATERNAL GRANDSIRE OF LOTS 74-76

Lot 73

HANELS KINGPIN M4571

GGP

4442384

BW: 78 • Scan Wt: 1315

PB SM • 9/25/24

SIRE OMF HARD RIGHT H21

DAM HANELS COWBOY CUT D6208

MCC-PLG KINGPIN 319

HANELS COWBOY CUT G9541

W/C MISS WERNING 983G

HANELS MISS PALE E7527

SCAN DATA Adj. IMF: 2.48 • Adj. BF: 0.16 • Adj. REA: 12.81

CE	BW	WW	YW	ADG	MCE	MLK	MW	STY	DOC	CW	YG	MRB	BF	REA	API	TI
9.3	2.7	97.4	145.7	0.3	5	20.3	68.9	18.6	12.4	52.8	-0.3	0.16	-0.075	0.9	141.5	89.4

- A powerful purebred Simmental with the performance in person and on paper to make a lot of friends on sale day.
- Again, you will notice the influence of Hanel Cowboy Cut D6208 on the maternal side of his lineage. Those females flat out work in this program.
- Ranking in the top 10% for WW, YW, and CW showcase his true genetic power.
- Top 10% WW, YW, CW; Top 20% ADG, STAY; Top 30% TI.

Lot 74

HANELS KINGPIN M4513

GGP

4442388

BW: 85 • Scan Wt: 1570

PB SM • 8/17/24

SIRE OMF HARD RIGHT H21

DAM CCR COWBOY CUT 5048Z

MCC-PLG KINGPIN 319

HANELS MISS CUT E7500

W/C MISS WERNING 983G

HANELS MISS DESIGN U826

SCAN DATA Adj. IMF: 2.87 • Adj. BF: 0.26 • Adj. REA: 15.36

CE	BW	WW	YW	ADG	MCE	MLK	MW	STY	DOC	CW	YG	MRB	BF	REA	API	TI
9.5	1.4	93.8	154.6	0.38	7.1	19.6	66.4	18.7	13.9	60.1	-0.13	0.22	-0.032	0.82	147.8	90.3

- Hanel Kingpin M4513 keeps the purebred power bull lineup rolling. He's the kind of sire to utilize to make pounds heavy feeder calves.
- His dam is a proven female sired by CCR Cowboy Cut 5048Z.
- One of the leaders in the aged bulls for his YW EPD. His calves will grow and gain.
- Top 2% ADG, CW; Top 4% YW; Top 10% WW; Top 20% STAY; Top 25% DOC, TI; Top 30% MCE, API.

Lot 75

HANELS KINGPIN M4544

GGP

4442403

BW: 90 • Scan Wt: 1555

PB SM • 8/28/24

SIRE OMF HARD RIGHT H21

DAM CCR COWBOY CUT 5048Z

MCC-PLG KINGPIN 319

HANELS MISS COWBOY CUT G9502

W/C MISS WERNING 983G

HANELS MISS LEGEND W983

SCAN DATA Adj. IMF: 2.51 • Adj. BF: 0.21 • Adj. REA: 17.1

CE	BW	WW	YW	ADG	MCE	MLK	MW	STY	DOC	CW	YG	MRB	BF	REA	API	TI
6.2	4	102.3	158.3	0.35	5.8	22.7	73.8	13.5	13.2	50.2	-0.33	0.17	-0.067	1.03	128.8	91.4

- The cross that continues to succeed strikes again: MCC-PLG Kingpin 319 x CCR Cowboy Cut 5048Z dam.
- These older bulls are ready to go to work and provide plenty of power and athleticism.
- Growth and carcass yield highlight his impressive EPD profile. He will put heavy calves on the scales.
- Top 3% WW; Top 4% YW; Top 5% ADG; Top 15% CW; Top 20% REA; Top 25% TI; Top 35% DOC.

Lot 76

HANELS KINGPIN M4576

GGP

4442369

BW: 79 • Scan Wt: 1300

PB SM • 10/11/24

SIRE OMF HARD RIGHT H21

DAM CCR COWBOY CUT 5048Z

MCC-PLG KINGPIN 319

HANELS MISS COWBOY CUT F8506

W/C MISS WERNING 983G

M4 MS CAPITAL GAINS C75

SCAN DATA Adj. IMF: 1.8 • Adj. BF: 0.22 • Adj. REA: 15.56 HOMO POLLED

CE	BW	WW	YW	ADG	MCE	MLK	MW	STY	DOC	CW	YG	MRB	BF	REA	API	TI
8.1	2.7	88.3	130.5	0.26	5.1	18.6	62.7	16	12.7	51.8	-0.31	-0.1	-0.058	1.08	116.9	77.1

- One of the lighter birth weight bulls in this age class, his mother is another CCR Cowboy Cut 5048Z daughter and has been around for a long time doing her job.
- Another strong genetic profile with an emphasis on growth and carcass yield.
- M4576 is homozygous polled.
- Top 10% CW; Top 15% REA; Top 25% WW; Top 30% YW.

THE AGE ADVANTAGED BULLS

Lot 77



- Another purebred herd bull prospect with added length of body and power. M4550 is level in his topline and hip, stout made from the ground up and carries plenty of center body capacity.
- M4550 continues the string of MCC-PLG Kingpin 319 sons who carry extra mass, power, and performance.
- Combines strong growth data with added longevity when you study his EPD profile.
- Top 10% STAY; Top 25% ADG; Top 30% YW; Top 35% WW, CW, REA.

Lot 77

HANELS KINGPIN M4550

GGP

4442435

BW: 85 • Scan Wt: 1465

PB SM • 8/30/24

SIRE OMF HARD RIGHT H21

DAM DIKEMANS DOUBLE DOWN 26W

MCC-PLG KINGPIN 319

HANELS MISS DOWN B4230

W/C MISS WERNING 983G

BDV BRIDGET T69

SCAN DATA Adj. IMF: 3.35 • Adj. BF: 0.25 • Adj. REA: 16.33

CE	BW	WW	YW	ADG	MCE	MLK	MW	STY	DOC	CW	YG	MRB	BF	REA	API	TI
8.6	1.4	84.4	131.4	0.29	5.8	20.5	62.6	19.9	12.8	37.7	-0.33	0.13	-0.057	0.94	139.8	82.6



OMF HARD RIGHT H21 - PATERNAL GRANDSIRE OF LOTS 71, 86



THE AGE ADVANTAGED BULLS

Lot 78



- Smooth shouldered, long bodied, and massive best characterize M4522. You must appreciate the head and neck this herd sire has on him, while seamlessly putting together an admirable profile view.
- Backed by a Koch Big Timber 685D dam who continues to do her job.
- He is elite in his growth genetics while also measuring up well for carcass yield data.
- M4522 is homozygous polled.
- Top 2% CW; Top 3% WW, YW; Top 4% ADG, REA; Top 20% FAT; Top 25% TI; Top 30% YG.

Lot 78

HANELS KINGPIN M4522

GGP

4442391

BW: 86 • Scan Wt: 1450

PB SM • 8/19/24

SIRE OMF HARD RIGHT H21

DAM KOCH BIG TIMBER 685D

MCC-PLG KINGPIN 319

HANELS MISS TIMBER H0507

W/C MISS WERNING 983G

HANELS MISS DIVIDEND F8502

SCAN DATA Adj. IMF: 2.72 • Adj. BF: 0.32 • Adj. REA: 17.33 HOMO POLLED • HOMO BLACK

CE	BW	WW	YW	ADG	MCE	MLK	MW	STY	DOC	CW	YG	MRB	BF	REA	API	TI
9.2	1.8	102.9	159.7	0.36	6	18	69.4	9.7	12	61.8	-0.41	0	-0.09	1.25	120.1	90.4



KOCH BIG TIMBER 685D - MATERNAL GRANDSIRE OF LOT 78



THE AGE ADVANTAGED BULLS

Lot 79

HANELS KINGPIN M4506

GGP
4442424

BW: 83 • Scan Wt: 1365

PB SM • 8/14/24

SIRE OMF HARD RIGHT H21
MCC-PLG KINGPIN 319

W/C MISS WERNING 983G

DAM HANELS PALE FACE A3035
HANELS MISS PALE D6141

T748 EXPRESSWAY HBS

SCAN DATA Adj. IMF: 2.79 • Adj. BF: 0.18 • Adj. REA: 15.83

CE	BW	WW	YW	ADG	MCE	MLK	MW	STY	DOC	CW	YG	MRB	BF	REA	API	TI
8.2	1.1	80.1	133.5	0.33	5.1	15.8	55.8	18	11.7	39.7	-0.38	0.13	-0.092	0.85	136.2	80.7

- M4506 is the next in the lineup of powerfully built purebred herd sire prospects sired by MCC- PLG Kingpin 319 son.
- As you study these older bulls, remember they are developed to last and ready for heavier service.
- He will sire progeny that grow, gain, and hang a strong carcass yield.
- Top 10% ADG; Top 20% FAT; Top 25% YW; Top 30% STAY; Top 35% CW, YG.



HART STATE OF WAR 056C - MATERNAL GRANDSIRE OF LOT 80

Lot 80

HANELS KINGPIN M4526

GGP
4442370

BW: 85 • Scan Wt: 1495

PB SM • 8/21/24

SIRE OMF HARD RIGHT H21
MCC-PLG KINGPIN 319

W/C MISS WERNING 983G

DAM HART STATE OF WAR 056C

HANELS MISS STATE OF WAR J1500

TJ MISS 63F

SCAN DATA Adj. IMF: 3.11 • Adj. BF: 0.26 • Adj. REA: 16.17 HOMO POLLED • HOMO BLACK

CE	BW	WW	YW	ADG	MCE	MLK	MW	STY	DOC	CW	YG	MRB	BF	REA	API	TI
14.5	0.6	90.3	139.9	0.31	4.7	22.4	67.4	18	12.7	52.1	-0.09	0.24	-0.023	0.66	152.1	89.9

- Hanel Kingpin M4526 wraps up the standout set of fall yearling MCC-PLG Kingpin 319 sons.
- From an impressive young dam, he, like all his brothers, will impress on sale day.
- Curve bending EPDs on his growth curve from with his CE to YW spread.
- Top level API and TI measures make him an intriguing prospect.
- M4526 is homozygous polled.
- Top 10% CW; Top 15% CE, YW, ADG; Top 20% WW; Top 25% API, TI; Top 30% STAY; Top 35% BW.



HANELS EPIC K2529 - MATERNAL BROTHER TO LOT 81

Lot 81

HANELS KINGPIN M4555

GGP
4442437

BW: 84 • Scan Wt: 1550

3/4 SM 1/4 AN • 9/5/24

SIRE OMF HARD RIGHT H21
MCC-PLG KINGPIN 319

W/C MISS WERNING 983G

DAM JMB TRACTION 292

M4 MS ATTRACTION Y85F

SFI BETTY SUE Y85T

SCAN DATA Adj. IMF: 2.59 • Adj. BF: 0.26 • Adj. REA: 17.07 HOMO POLLED

CE	BW	WW	YW	ADG	MCE	MLK	MW	STY	DOC	CW	YG	MRB	BF	REA	API	TI
10.7	-0.6	80	132.5	0.33	4.1	24.8	64.5	16.9	8.6	47.1	-0.33	0.19	-0.057	1.06	129.6	80.2

- A three-quarter Simmental herd bull prospect that needs to be found on sale day.
- His birth weight EPDs suggest low birth to heavy yearling calves.
- M4555 is homozygous polled.
- Top 10% ADG; Top 15% CW, REA; Top 20% BW; Top 25% YW.

Lot 82

HANELS KINGPIN M4562

GGP
4442395

BW: 84 • Scan Wt: 1505

3/4 SM 1/4 AN • 9/14/24

SIRE OMF HARD RIGHT H21
MCC-PLG KINGPIN 319

W/C MISS WERNING 983G

DAM BAR CK TEBOW 1006X

BAR CK MS 1006X 5155C

BAR CK MS 9106 3125A

SCAN DATA Adj. IMF: 3.95 • Adj. BF: 0.15 • Adj. REA: 16.26

CE	BW	WW	YW	ADG	MCE	MLK	MW	STY	DOC	CW	YG	MRB	BF	REA	API	TI
11.8	0.4	74.8	120.9	0.29	5.9	21.3	58.6	15.3	9.2	33.8	-0.13	0.55	-0.032	0.48	142	83.6

- From the MCC-PLG Kingpin 319 sire contingent, M4562 is a three-quarter Simmental with added length and overall quality.
- This is an underrated sire prospect for cowboys looking to breed a larger group of heifers.
- He combines high marbling genetics with calving ease potential.
- Top 10% MARB; Top 25% ADG; Top 30% CE; Top 35% BW.

THE AGE ADVANTAGED BULLS



MGR TREASURE - MATERNAL GRANDSIRE OF LOT 83



BROWN JYJ REDEMPTION Y1334 - MATERNAL GRANDSIRE OF LOT 84

Lot 83

GGP

HANELS KINGPIN M4514

4442387

BW: 78 • Scan Wt: 1375

5/8 SM 3/8 AN • 8/17/24

SIRE OMF HARD RIGHT H21

DAM MGR TREASURE

MCC-PLG KINGPIN 319

HANELS MISS TREASURE H0500

W/C MISS WERNING 983G

HANELS MISS TOP TEN F8531

SCAN DATA Adj. IMF: 3.11 • Adj. BF: 0.3 • Adj. REA: 14.82

CE	BW	WW	YW	ADG	MCE	MLK	MW	STY	DOC	CW	YG	MRB	BF	REA	API	TI
13.4	-1.6	84.1	145.1	0.38	8.7	17.1	59.1	18.2	12.8	38.8	-0.14	0.39	-0.025	0.65	150.2	88.1

- M4514 combines modest birth weight and overall phenotypic quality together.
- His MGR Treasure dam is starting to make her mark in the herd.
- Big time data set that lights up the scoreboard for growth, carcass, and calving ease.
- Top 2% ADG; Top 10% BW, YW, MCE; Top 20% CE; Top 25% STAY, MARB; Top 30% API, TI; Top 35% WW, DOC.

Lot 85

GGP

HANELS KINGPIN M4563

4442409

BW: 84 • Scan Wt: 1290

3/4 SM 1/4 CH • 9/17/24

SIRE OMF HARD RIGHT H21

DAM LT-WC TEMPLETON 1483 PLD ET

MCC-PLG KINGPIN 319

HANELS MISS TEMPLE C5203

W/C MISS WERNING 983G

HANELS MISS MO Z2238

SCAN DATA Adj. IMF: 2.37 • Adj. BF: 0.15 • Adj. REA: 13.74

CE	BW	WW	YW	ADG	MCE	MLK	MW	STY	DOC	CW	YG	MRB	BF	REA	API	TI
7	2.4	88.9	142.2	0.33	4.6	15.3	59.9	13.6	10.1	61.6	-0.35	0.04	-0.083	1.1	107.6	76.6

- Here is a pair of unique genetic combinations to round out the MCC-PLG Kingpin 319 sons: three-quarter Simmental with a quarter of Charolais blood on the bottom side of the pedigree.
- His mother is sired by LT-WC Templeton 1483 PLD ET, a top notch Charolais herd sire. M4563 and M4568 are bred on the same unique cross.
- A heavy weight EPD profile that should sire calves that mash down the scales.
- Top 2% CW; Top 10% ADG; Top 15% YW, REA; Top 20% WW; Top 25% FAT.

Lot 84

GGP

HANELS KINGPIN M4507

4530170

BW: 79 • Scan Wt: 1420

3/4 SM 1/4 AR • 8/14/24

SIRE OMF HARD RIGHT H21

DAM BROWN JYJ REDEMPTION Y1334

MCC-PLG KINGPIN 319

BROOKS MISS REDEMPT D28

W/C MISS WERNING 983G

BROOKS MISS SUPER STAR

SCAN DATA Adj. IMF: 2.39 • Adj. BF: 0.23 • Adj. REA: 16.14 HETERO BLACK

CE	BW	WW	YW	ADG	MCE	MLK	MW	STY	DOC	CW	YG	MRB	BF	REA	API	TI
14.4	-1.1	88.5	142.6	0.34	9	19.4	63.6	15	12.6	50.1	-0.3	0.18	-0.073	0.88	134.1	85.6

- An MCC-PLG Kingpin 319 son that is a three-quarter Simmental with a shot of Red Angus in his genetic package.
- His mother is an older "D model" female sired by the popular Red Angus stud bull, Brown JYJ Redemption Y133.
- Another impressive EPD profile that carries a large birth to yearling spread.
- Top 10% ADG, MCE, CW; Top 15% CE, BW, YW; Top 25% WW.

Lot 86

GGP

HANELS KINGPIN M4568

4442423

BW: 85 • Scan Wt: 1275

3/4 SM 1/4 CH • 9/24/24

SIRE OMF HARD RIGHT H21

DAM LT-WC TEMPLETON 1483 PLD ET

MCC-PLG KINGPIN 319

HANELS MISS TEMPLE C5214

W/C MISS WERNING 983G

HANELS MISS HUMMER Z2046

SCAN DATA Adj. IMF: 2.21 • Adj. BF: 0.25 • Adj. REA: 14.56

CE	BW	WW	YW	ADG	MCE	MLK	MW	STY	DOC	CW	YG	MRB	BF	REA	API	TI
12	1.5	79.2	127	0.3	7.4	18.7	57.9	17.8	10.1	39.2	-0.34	0.07	-0.071	0.88	121.4	73.5

- The other Charolais influenced herd sire prospect in this sire group, M4568 will catch your attention with his power and overall shape.
- His mother is sired by LT-WC Templeton 1483 PLD ET, a top notch Charolais herd sire. M4563 and M4568 are bred on the same unique cross.
- Showcases a balanced EPD profile and the breed makeup to be a successful sire of heavy weight calves.
- Top 20% ADG, MCE; Top 30% CE, STAY, CW; Top 35% YW.

THE AGE ADVANTAGED BULLS

Lot 87



- Hanel Hardwood M4553 is a powerfully made purebred to lead off the Harms Hardwood sire contingent in this age division. His presence, depth of body, and overall dimension is among the leaders in this age class of sale bulls.
- We will find out who sorted the pens when this guy sells!
- His CLRS Dividend 405D dam is in the prime of her production career in the program.
- M4553 reads as a calving ease specialist with added yield grade potential.
- Top 10% STAY, FAT; Top 20% CE, YG; Top 30% BW.

Lot 87

HANELS HARDWOOD M4553



4442377

BW: 83 • Scan Wt: 1460

PB SM • 9/1/24

SIRE VJT DRIFTWOOD E55

DAM CLRS DIVIDEND 405D

HARMS HARDWOOD

HANELS MISS DIVIDEND F8505

TJ 41Z

M4 MS CAPITAL GAINS C75

SCAN DATA Adj. IMF: 2.61 • Adj. BF: 0.18 • Adj. REA: 16.58

CE	BW	WW	YW	ADG	MCE	MLK	MW	STY	DOC	CW	YG	MRB	BF	REA	API	TI
12.8	0.2	76.8	117.8	0.26	4.6	22.4	60.7	20	11.5	31.2	-0.42	0.03	-0.098	0.83	139.5	78.3



HARMS HARDWOOD - SIRE OF LOTS 87-95

THE AGE ADVANTAGED BULLS



CDI TRUSTEE 387F - MATERNAL GRANDSIRE OF LOT 88

Lot 88

GGP

HANELS HARDWOOD M4521

4442416

BW: 82 • Scan Wt: 1355

PB SM • 8/19/24

SIRE VJT DRIFTWOOD E55
HARMS HARDWOOD
TJ 41Z

DAM CDI TRUSTEE 387F
HANELS MISS TRUSTEE J1509
TJ MISS 63F

SCAN DATA Adj. IMF: 2.44 • Adj. BF: 0.16 • Adj. REA: 18.47

CE	BW	WW	YW	ADG	MCE	MLK	MW	STY	DOC	CW	YG	MRB	BF	REA	API	TI
8.4	2.5	91.6	136.2	0.28	3.7	26.2	71.9	12.9	12.1	53.2	-0.41	0.12	-0.087	1.16	125.3	86

- The next in line of quality livestock is this purebred Harms Hardwood son with a moderate birth weight and the potential to make a useful herd sire.
- High growth potential abounds in his genetic profile.
- Utilize M4521 and others in this sire group to add power to his calf crops.
- Top 10% CW, REA; Top 15% WW; Top 20% YW, FAT; Top 30% ADG, MILK, YG.

Lot 89

GGP

HANELS HARDWOOD M4512

4442376

BW: 85 • Scan Wt: 1395

PB SM • 8/17/24

SIRE VJT DRIFTWOOD E55
HARMS HARDWOOD
TJ 41Z

DAM HANELS COWBOY CUT D6208
HANELS MISS COWBOY CUT J1544
HANELS MISS MO Z2238

SCAN DATA Adj. IMF: 1.69 • Adj. BF: 0.19 • Adj. REA: 16.07

CE	BW	WW	YW	ADG	MCE	MLK	MW	STY	DOC	CW	YG	MRB	BF	REA	API	TI
9.2	1.7	95.3	141.9	0.29	7.4	24.8	72.3	14.1	12.5	54	-0.46	0.06	-0.086	1.35	128.4	88

- Hanel Hardwood M4512 carries the influence of two of the leading sires in this program's recent memory: Harms Hardwood on the top side and Hanel Cowboy Cut D6208 on the bottom side.
- One of the leading data sets in this age class for carcass yield and overall growth power. Students of the data will find this guy to be a suitable prospect.
- Top 1% REA; Top 5% CW; Top 10% WW, YG; Top 15% YW; Top 25% ADG, MCE, FAT; Top 30% TI.

Lot 90

GGP

HANELS HARDWOOD M4554

4442373

BW: 86 • Scan Wt: 1330

PB SM • 9/1/24

SIRE VJT DRIFTWOOD E55
HARMS HARDWOOD
TJ 41Z

DAM HANELS COWBOY CUT D6208
HANELS MISS COWBOY CUT J1557
HANELS MISS PALE C5037

SCAN DATA Adj. IMF: 2.04 • Adj. BF: 0.16 • Adj. REA: 17.61

CE	BW	WW	YW	ADG	MCE	MLK	MW	STY	DOC	CW	YG	MRB	BF	REA	API	TI
10.2	1.5	84.5	125.2	0.25	5.5	25.1	67.3	16.1	13.4	42.2	-0.44	0.07	-0.085	1.13	130.1	81.9

- Bred from the same cross as M4512, you could almost copy and paste the footnote here because these bulls are quite similar in their profiles.
- The maternal potency of Hanel Cowboy Cut D6208 in the pedigree cannot be understated.
- If you want to improve carcass merit, consider M4554. He can do that while simultaneously adding pounds of payweight.
- Top 10% REA; Top 20% YG; Top 25% CW, FAT; Top 35% WW, MILK, DOC.



THE AGE ADVANTAGED BULLS

Lot 91

HANELS HARDWOOD M4541

GGP

4442383

BW: 75 • Scan Wt: 1350

PB SM • 8/26/24

SIRE VJT DRIFTWOOD E55
HARMS HARDWOOD
TJ 41Z

DAM HANELS DOUBLE B4252
HANELS MISS DOUBLE E7213
BROOKS MISS RENE

SCAN DATA Adj. IMF: 1.99 • Adj. BF: 0.15 • Adj. REA: 18.45

CE	BW	WW	YW	ADG	MCE	MLK	MW	STY	DOC	CW	YG	MRB	BF	REA	API	TI
13.2	-0.3	76.1	111.7	0.22	6.2	26.7	64.6	17.1	12.8	40.7	-0.54	-0.08	-0.1	1.29	127.9	76.3

- Unique to the Harms Hardwood sired offering, Hanel Hardwood M4541 is one of the lightest birth weight bulls in this age class at only 75 lb.
- His mom is a working lady who has been around in the herd for several years now.
- Combines calving ease, carcass yield, and maternal traits in a loaded EPD profile.
- Top 2% REA, YG; Top 10% FAT; Top 20% CE; Top 25% BW, MILK; Top 30% CW; Top 35% STAY.

Lot 92

HANELS HARDWOOD M4547

GGP

4442366

BW: 85 • Scan Wt: 1535

PB SM • 8/29/24

SIRE VJT DRIFTWOOD E55
HARMS HARDWOOD
TJ 41Z

DAM HANELS TOP TEN D6012
HANELS MISS TOP TEN F8521
HANELS MISS NLC X008

SCAN DATA Adj. IMF: 2.37 • Adj. BF: 0.19 • Adj. REA: 18.16

CE	BW	WW	YW	ADG	MCE	MLK	MW	STY	DOC	CW	YG	MRB	BF	REA	API	TI
11.4	2.2	92.3	142.4	0.31	6.6	24.4	70.4	15.3	11.3	42.8	-0.33	0.08	-0.096	0.71	133	86.2

- M4547 is another quality individual with mass and power, who is developed to be ready to cover larger volumes of cows this spring and summer.
- Like many others, you can expect to add growth and power in M4547's calves.
- Top 10% FAT; Top 15% WW, YW, ADG; Top 20% CW; Top 35% CE, TI, MCE.

Lot 93

HANELS HARDWOOD M4537

GGP

4442379

BW: 85 • Scan Wt: 1390

PB SM • 8/25/24

SIRE VJT DRIFTWOOD E55
HARMS HARDWOOD
TJ 41Z

DAM OMF EPIC E27
HANELS MISS EPIC J1524
HANELS MISS OCTANE C5243

SCAN DATA Adj. IMF: 2.14 • Adj. BF: 0.19 • Adj. REA: 16.48

CE	BW	WW	YW	ADG	MCE	MLK	MW	STY	DOC	CW	YG	MRB	BF	REA	API	TI
7.8	2.3	86.2	131.8	0.28	5.7	26.6	69.6	13.5	13.2	41.2	-0.43	-0.01	-0.092	1.03	117.4	80

- Harms Hardwood M4537 continues the lineup of quality purebred fall yearling bulls.
- His OMF Epic E27 sired dam is a rising young female in the breeding program.
- Only 76 lb. at birth makes him one of the lightest in the fall yearling set.
- Well-rounded genetic profile with high rankings for multiple traits in his EPD suite.
- Top 20% REA, FAT, YG; Top 25% CW, MILK; Top 30% WW, YW, ADG; Top 35% DOC.



OMF EPIC E27 - MATERNAL GRANDSIRE OF LOT 93

THE AGE ADVANTAGED BULLS



RUBYS TURNPIKE 771E - MATERNAL GRANDSIRE OF LOT 94

Lot 94

HANELS HARDWOOD M4531

GGP

4442389

BW: 81 • Scan Wt: 1400

PB SM • 8/24/24

SIRE VJT DRIFTWOOD E55
HARMS HARDWOOD
TJ 41Z

DAM RUBYS TURNPIKE 771E
HANELS MISS TURNPIKE H0515
CLRS EMOJI 703E

SCAN DATA Adj. IMF: 2.55 • Adj. BF: 0.23 • Adj. REA: 17.25 HOMO BLACK

CE	BW	WW	YW	ADG	MCE	MLK	MW	STY	DOC	CW	YG	MRB	BF	REA	API	TI
13	-0.8	80.4	129.2	0.3	6.9	26.1	66.2	18.4	13.8	49.7	-0.42	-0.02	-0.082	1.19	138.1	81.3

- A Harms Hardwood son, out of a young Rubys Turnpike 771E daughter. You can expect this one to give you a neat look and have the functional pieces you need in a herd bull.
- He reads like a well-balanced bull that will make several positive contributions to your herd.
- Calving ease and carcass yield potential will be the strengths of M4531's progeny.
- Top 5% REA; Top 10% CW; Top 20% CE, BW, ADG, STAY, YG; Top 25% FAT; YW, MCE, MILK, DOC.

Lot 95

HANELS HARDWOOD M4519

GGP

4442386

BW: 80 • Scan Wt: 1455

3/4 SM 1/4 AN • 8/19/24

SIRE VJT DRIFTWOOD E55
HARMS HARDWOOD
TJ 41Z

DAM GW PREMIUM BEEF 021TS
HANELS MISS BEEF D6219
HANELS MISS FREE B4207

SCAN DATA Adj. IMF: 2.67 • Adj. BF: 0.19 • Adj. REA: 17.28

CE	BW	WW	YW	ADG	MCE	MLK	MW	STY	DOC	CW	YG	MRB	BF	REA	API	TI
13.4	-1.2	71.7	110.7	0.24	6.3	27.3	63.2	15.3	13.2	33.3	-0.38	0.23	-0.066	0.97	128.6	77.3

- The lone percentage fall yearling in the Harms Hardwood son showcase, M4519 is a three-quarter Simmental with plenty of length and performance in a smooth build.
- M4519 should be a solid candidate for heifer breeding with his calving ease data.
- Top 15% BW; Top 20% CE; Top 25% MILK, REA; Top 35% DOC, YG.



THE AGE ADVANTAGED BULLS

Lot 96



- A deep bodied, robustly shaped age advantaged herd sire prospect. This CLRS Jericho 336J son is a bull built for the real-world stockman with his depth, shape, and overall quality.
- A low percentage Simmental herd sire prospect that should be attractive to the success-minded stockman with his type and genetic profile.
- His overall trait excellence leads to his top-end API and TI rankings.
- Top 15% STAY, MARB; Top 20% WW, YW, ADG, CW; Top 25% CE, BW, API, TI.

Lot 96

WSSC/HANEL JERICO M60

GGP

4519133

BW: 76 • Scan Wt: 1460

3/8 SM 3/8 AN 1/4 CS • 8/25/24

SIRE EGL FIRESTEEL 103F

DAM CCR COWBOY CUT 5048Z

CLRS JERICO 336J

25J

CLRS ALL XCELLENCE 316 A

WSSC BLACK BIRD PLUS 117E

SCAN DATA Adj. IMF: 2.59 • Adj. BF: 0.24 • Adj. REA: 16.98 HOMO POLLED

CE	BW	WW	YW	ADG	MCE	MLK	MW	STY	DOC	CW	YG	MARB	BF	REA	API	TI
12.4	-0.3	91.3	139.6	0.3	5.5	23.9	69.5	19.2	10.4	44.5	-0.24	0.51	-0.04	0.9	152.4	92.1



CLRS JERICO 336J - SIRE OF LOTS 96-98

THE AGE ADVANTAGED BULLS



CCR COWBOY CUT 5048Z - MATERNAL GRANDSIRE OF LOT 96 & 97

Lot 97



WSCC/HANEL JERICO M75

4519136

BW: 64 • Scan Wt: 1320

5/8 SM 3/8 AN • 9/22/24

SIRE EGL FIRESTEEL 103F

DAM CCR COWBOY CUT 5048Z

CLRS JERICO 336J

WHITE STAR GLORIA 14D

CLRS ALL XCELLENCE 316 A

WHITE STAR GLORIA 54W

SCAN DATA Adj. IMF: 2.97 • Adj. BF: 0.16 • Adj. REA: 17.01

CE	BW	WW	YW	ADG	MCE	MLK	MW	STY	DOC	CW	YG	MRB	BF	REA	API	TI
15	-1.5	75.6	112.1	0.23	7.8	21.8	59.6	18.8	14	37.5	-0.34	0.48	-0.054	1	152.5	85.5

- WSCC/Hanel Jericho M75 is a functionally made herd sire prospect with CCR Cowboy Cut 5048Z sitting prominently on his maternal grandsire line of the pedigree.
- Only 64 lb. at birth makes M75 the lightest birth calf in this age group of sale bulls.
- His pedigree indicates maternal strength; keep those heifer calves he sires.
- M75 projects as a calving ease, cow making herd sire with added marbling.
- Top 10% CE; Top 15% BW, STAY, MARB; Top 20% MCE; Top 25% DOC, REA, API.

Lot 98



WSCC/HANEL JERICO M70

4519135

BW: 80 • Scan Wt: 1365

5/8 SM 3/8 AN • 9/8/24

SIRE EGL FIRESTEEL 103F

DAM HILB ORACLE C033R

CLRS JERICO 336J

WHITE STAR CHEERLEADER 64H

CLRS ALL XCELLENCE 316 A

WHITE STAR CO-ED 9C

SCAN DATA Adj. IMF: 2.5 • Adj. BF: 0.14 • Adj. REA: 15.69

CE	BW	WW	YW	ADG	MCE	MLK	MW	STY	DOC	CW	YG	MRB	BF	REA	API	TI
12.3	1.5	83.6	120.6	0.23	4.6	19.5	61.2	19.8	13.8	35.2	-0.45	0.42	-0.09	1.05	145	84.7

- A nicely made, phenotypically pleasing CLRS Jericho 336J, out of an attractive HILB Oracle C033R daughter from the White Star program.
- This high percentage sire prospect does a lot of things well in person and on paper.
- Big time data set! His rankings excel across a myriad of traits, resulting in strong API.
- Top 10% STAY; Top 15% YG; Top 20% MARB, FAT, REA; Top 25% CE, DOC; Top 35% WW, API.



THE AGE ADVANTAGED BULLS

Lot 99



Lot 99

WSCC/HANEL HONOR M53



4519131

BW: 70 • Scan Wt: 1460

3/4 SM 1/8 AN 1/8 MX • 8/17/24

SIRE HOOK'S BEACON 56B
KBHR HONOR H060
WS MISS SUGAR C4

DAM SFG THE JUDGE D633
WHITE STAR BLACK GLOW 42K
WSCC 104E

SCAN DATA Adj. IMF: 1.45 • Adj. BF: 0.19 • Adj. REA: 17.98

CE	BW	WW	YW	ADG	MCE	MLK	MW	STY	DOC	CW	YG	MRB	BF	REA	API	TI
11.5	-1.3	86.2	133.5	0.3	7.9	26.5	69.5	15.4	10.7	52.9	-0.17	0.29	-0.025	0.91	134.3	86.3

- WSCC/Hanel Honor M53 is a sharp looking dude! His style and extension will catch your eye. On top of that, he packs a punch in terms of his quarter shape and dimension. Bulls built like M53 can put pounds on a calf crop.
- He and M50 are the lone KBHR Honor H060 sons in the aged bull division
- Notice his birth to yearling growth EPD spread, along with an added shot of marbling.
- Top 10% CW; Top 15% BW, MCE; Top 20% ADG; Top 25% YW; Top 30% WW, MILK; Top 35% CE, MARB.

Lot 100

WSCC/HANEL HONOR M50



4519130

BW: 73 • Scan Wt: 1515

3/4 SM 1/8 AN 1/8 MX • 8/15/24

SIRE HOOK'S BEACON 56B
KBHR HONOR H060
WS MISS SUGAR C4

DAM SFG THE JUDGE D633
WHITE STAR CHEERLEADER 41J
WSCC 102E

SCAN DATA Adj. IMF: 2.34 • Adj. BF: 0.21 • Adj. REA: 17.8 •

CE	BW	WW	YW	ADG	MCE	MLK	MW	STY	DOC	CW	YG	MRB	BF	REA	API	TI
15.1	-1.8	81.1	127.6	0.29	10.7	23.7	64.1	16.2	11	31.7	-0.12	0.46	-0.022	0.49	148.6	88.1



KBHR HONOR H060 - SIRE OF LOTS 99 & 100

- A light birth weight three-quarter Simmental from the KBHR Honor H060. His 73 lb. birth weight and calving ease emphasis on his genetic profile make him a prospect worthy of consideration.
- He is a three-quarter brother to M53, as both bulls are out of young SFG The Judge D633 dams from the White Star program.
- Calving ease prospect with added marbling prowess and a strong YW complete his EPD profile.
- Top 2% MCE; Top 10% CE, BW; Top 15% MARB; Top 25% ADG; Top 30% API; Top 35% YW, TI.

THE AGE ADVANTAGED BULLS

Lot 101

WSCC/HANEL GOLD RUSH M45

4519128

BW: 73 • Scan Wt: 1455

PB SM • 8/12/24

SIRE TJ GOLD 274G

DAM ES RIGHT TIME FA110-4

TJ GOLD RUSH 506K

WHITE STAR CHEERLEADER 53J

TJ 59H

WHITE STAR BLK GLOW 60W

SCAN DATA Adj. IMF: 2.71 • Adj. BF: 0.25 • Adj. REA: 16.52

CE	BW	WW	YW	ADG	MCE	MLK	MW	STY	DOC	CW	YG	MRB	BF	REA	API	TI
13.4	-1	86.3	131.5	0.28	9.9	20.5	63.6	20.7	13.8	42.7	-0.29	0.33	-0.06	0.87	163	92.2

- M45 leads off the fall born edition of the TJ Gold Rush 506K sons as an easy calving purebred herd sire prospect that will get your attention phenotypically.
- Only 73 lb. at birth, his young dam did a nice job raising up the powerful bull you will see here on sale day.
- Additionally, he is one of the leaders in the aged bull portion genetically with his data sheet that ranks highly for so many traits.
- Top 3% MCE; Top 10% STAY; Top 15% BW, API; Top 20% CE, TI; Top 25% DOC, CW, MARB; Top 30% WW, YW, ADG.



TJ GOLD RUSH 506K - SIRE OF LOTS 101-105

Lot 102

HANELS GOLD RUSH M4573

4442426

BW: 85 • Scan Wt: 1245

PB SM • 9/25/24

SIRE TJ GOLD 274G

DAM KOCH BIG TIMBER 685D

TJ GOLD RUSH 506K

HANELS MISS BIG TIMBER K2512

TJ 59H

M4 MS CAPITAL GAINS C75

SCAN DATA Adj. IMF: 3.09 • Adj. BF: 0.2 • Adj. REA: 15.29 HOMO POLLED

CE	BW	WW	YW	ADG	MCE	MLK	MW	STY	DOC	CW	YG	MRB	BF	REA	API	TI
12.6	-0.6	79.2	112.4	0.21	7.5	18.1	57.7	19.5	11	40.2	-0.17	0.26	-0.032	0.67	149.7	84

- Another calving ease cow making prospect in the lineup of aged bulls. In today's market climate, these types of bulls will position cattlemen for the eventual heifer retention and herd rebuild.
- A TJ Gold Rush 506K out of a young Koch Big Timber 685D daughter that did a bang up job raising him on her first try in production.
- Excels for calving ease and longevity on his EPD profile.
- M4573 is homozygous polled.
- Top 15% STAY; Top 20% BW; Top 25% CE, MCE; Top 30% CW, API.



Lot 103

HANELS GOLD RUSH M4574

4442371

BW: 77 • Scan Wt: 1325

PB SM • 10/7/24

SIRE TJ GOLD 274G

DAM OMF EPIC E27

TJ GOLD RUSH 506K

HANELS MISS EPIC J1517

TJ 59H

HANELS MISS COWBOY CUT G9502

SCAN DATA Adj. IMF: 2.9 • Adj. BF: 0.16 • Adj. REA: 13.35

CE	BW	WW	YW	ADG	MCE	MLK	MW	STY	DOC	CW	YG	MRB	BF	REA	API	TI
11.1	-0.3	95.7	147.7	0.32	8	21.9	69.7	18.4	15	50.3	-0.3	0.35	-0.067	0.95	159.8	97.6

- A more power filled package among the TJ Gold Rush 506K sire group, this time out of an OMF Epic E27 female that is early in her career.
- He is a purebred aged bull that has a lot to offer and can work in many breeding programs.
- Study his genetic merits, and you will see that M4574 carries high growth projections along with a top-tier API.
- Top 10% WW, YW, CW, TI; Top 15% DOC, API, ADG; Top 20% STAY, MCE; Top 25% BW, MARB; Top 35% CE, REA.



HANELS HARDWOOD L3562 - MATERNAL BROTHER TO LOT 103

THE AGE ADVANTAGED BULLS



KBHR SNIPER E036 - MATERNAL GRANDSIRE OF LOT 104

Lot 104

WSCC/HANEL GOLD RUSH M57

GGP

4519132

BW: 78 • Scan Wt: 1460

PB SM • 8/23/24

SIRE TJ GOLD 274G
TJ GOLD RUSH 506K
TJ 59H

DAM KBHR SNIPER E036
WHITE STAR ABBY 62J
WHITE STAR ABBY 52A

SCAN DATA Adj. IMF: 2.41 • Adj. BF: 0.32 • Adj. REA: 18.01 HETEROZYGOUS BLACK

CE	BW	WW	YW	ADG	MCE	MLK	MW	STY	DOC	CW	YG	MRB	BF	REA	API	TI
11.9	0.4	87.3	127.4	0.25	7.4	19.8	63.3	16.2	10.8	57.2	-0.28	0.31	-0.069	0.97	147.6	89.8

- WSCC/Hanel Gold Rush M57 is a well-rounded purebred Simmental prospect when you combine his pedigree with his physical build and genetic predictors.
- Raised by a KBHR Sniper E036 first-calf heifer who has a world of potential.
- Growth and carcass traits are the leading factors in his strong EPD profile, while still maintaining calving ease in his data package.
- Top 4% CW; Top 25% WW, TI, MCE; Top 30% CE, MARB, REA, API; Top 35% BW, YW.

Lot 105

WSCC/HANEL GOLD RUSH M46

GGP

4519129

BW: 75 • Scan Wt: 1460

1/2 SM 1/2 AN • 8/12/24

SIRE TJ GOLD 274G
TJ GOLD RUSH 506K
TJ 59H

DAM B/C ROUGH HOUSE 7011
B/C MISS HEATHER BLOOM 0911
WSCC HEATHER BLOOM 39B

SCAN DATA Adj. IMF: 3.47 • Adj. BF: 0.27 • Adj. REA: 18.25

CE	BW	WW	YW	ADG	MCE	MLK	MW	STY	DOC	CW	YG	MRB	BF	REA	API	TI
12.5	-1.8	76.7	119.9	0.27	8.9	21.2	59.5	22.1	8.9	36.6	-0.08	0.67	-0.004	0.58	166.9	90

- Rounding out the TJ Gold Rush 506K representation in the aged bull division is M46, a half-blood SimAngus that is functionally built in his design.
- Only 75 lb. when he was born, he should offer a load of potential as a calving ease cow maker.
- Elite longevity and carcass merit make him an interesting prospect with one of the top APIs in the aged bull category.
- Top 3% STAY; Top 4% MARB; Top 10% BW, MCE, API; Top 25% CE, TI; Top 35% ADG.

Lot 106

HANELS DOC M4535

GGP

4442414

BW: 85 • Scan Wt: 1305

PB SM • 8/25/24

SIRE CDI INNOVATOR 325D
CCS/JS DOC 48H
WHF SUMMER 365C

DAM HARMS HARDWOOD
HANELS MISS HARDWOOD K2532
HANELS MISS TOP TEN F8521

SCAN DATA Adj. IMF: 2.52 • Adj. BF: 0.23 • Adj. REA: 15.45

CE	BW	WW	YW	ADG	MCE	MLK	MW	STY	DOC	CW	YG	MRB	BF	REA	API	TI
9.3	0.6	76.6	110.3	0.21	7.5	22.1	60.3	17.2	11.1	35.5	-0.28	0.13	-0.061	0.73	131.5	78.2

- A set of CCS/JS Doc 48H sons led off by this purebred aged bull who traces his maternal lineage to a first calving Harms Hardwood dam.
- You will appreciate the quality and versatility of this sire group. They should do wonders in a commercial crossbreeding program.
- Top 25% MCE; Top 30% STAY.



CCS/JS DOC 48H - SIRE OF LOTS 106-110

THE AGE ADVANTAGED BULLS

Lot 107 HANELS DOC M4557

GGP

4442404

BW: 86 • Scan Wt: 1280

PB SM • 9/7/24

SIRE CDI INNOVATOR 325D
CCS/JS DOC 48H
WHF SUMMER 365C

DAM HARMS HARDWOOD
HANELS MISS HARDWOOD K2545
TJ MISS 824E

SCAN DATA Adj. IMF: 3.66 • Adj. BF: 0.15 • Adj. REA: 12.73 HOMO BLACK

CE	BW	WW	YW	ADG	MCE	MLK	MW	STY	DOC	CW	YG	MRB	BF	REA	API	TI
9.7	0.7	91.5	141.4	0.31	7.4	23.4	69	14.4	7.8	47	-0.33	0.33	-0.082	0.89	145.6	93.5

- Hanels Doc M4557 is bred on the same cross as the previously mentioned M4535, a CCS/JS Doc 48H from a first-calving Harms Hardwood daughter.
- He and his brothers should be fit and ready for strong service this spring breeding season.
- Like a broken record, M4557 makes the grade for his growth and powerful genetic merits.
- Top 15% WW, YW, ADG, CW; Top 20% TI; Top 25% MCE, FAT; Top 30% MARB; Top 35% API.

Lot 109 HANELS DOC M4551

GGP

4442428

BW: 85 • Scan Wt: 1350

PB SM • 8/30/24

SIRE CDI INNOVATOR 325D
CCS/JS DOC 48H
WHF SUMMER 365C

DAM OMF EPIC E27
HANELS MISS EPIC J1534
HANELS MISS AXIS E7051

SCAN DATA Adj. IMF: 1.81 • Adj. BF: 0.19 • Adj. REA: 16.83

CE	BW	WW	YW	ADG	MCE	MLK	MW	STY	DOC	CW	YG	MRB	BF	REA	API	TI
7.8	3.6	98.1	141.8	0.27	6.3	22.1	71	11.7	10.9	41.7	-0.31	0.01	-0.067	0.86	115.5	84.7

- M4551 combines the CCS/JS Doc 48H look and presence with the performance of OMF Epic E27 on the bottom side of the pedigree.
- Expect his progeny to grow all the way through production and gain with the best of them.
- Top 10% WW; Top 15% YW; Top 25% CW; Top 35% ADG.

Lot 110 HANELS DOC M4570

GGP

4442439

BW: 76 • Scan Wt: 1300

3/4 SM 1/4 AN • 9/24/24

SIRE CDI INNOVATOR 325D
CCS/JS DOC 48H
WHF SUMMER 365C

DAM TJ FRANCHISE 451D
TJ MISS 63F
TJ 42A

SCAN DATA Adj. IMF: 2.84 • Adj. BF: 0.16 • Adj. REA: 14.53 HOMO POLLED • HOMO BLACK

CE	BW	WW	YW	ADG	MCE	MLK	MW	STY	DOC	CW	YG	MRB	BF	REA	API	TI
9.1	1.8	90.1	139.9	0.31	6.4	23.7	68.7	13.3	12.9	65.2	-0.12	0.13	-0.044	0.75	113.9	80

- A three-quarter Simmental to round out the CCS/JS Doc 48H sire contingent. Like the others, you will like what you see.
- Dam is a productive SimAngus female from the heralded Triangle J program.
- He is a power bull in person and on paper. Notice his growth data figures.
- M4570 is homozygous polled.
- Top 1% CW; Top 15% ADG; Top 20% WW, YW.

Lot 108 HANELS DOC M4530

GGP

4442441

BW: 71 • Scan Wt: 1255

PB SM • 8/23/24

SIRE CDI INNOVATOR 325D
CCS/JS DOC 48H
WHF SUMMER 365C

DAM HANELS DOWN C5067
HANELS MISS DOWN E7204
HANELS MISS UNITED B4551

SCAN DATA Adj. IMF: 2.27 • Adj. BF: 0.25 • Adj. REA: 14.06

CE	BW	WW	YW	ADG	MCE	MLK	MW	STY	DOC	CW	YG	MRB	BF	REA	API	TI
14.9	-2.4	63	95.3	0.2	8.8	19.5	50.9	18.3	5.7	20.6	-0.18	0	-0.051	0.33	134.6	71.1

- The lightest birth option of his sire group, M4530 fits the common mold of a rock solid purebred aged bull that passes physical inspection and is ready to go to work.
- Posted a 71 lb. birth weight, one of the lightest in the aged bull offering.
- Surefire calving ease genetic predictors with built in longevity as well.
- Top 5% BW; Top 10% CE, MCE; Top 20% STAY.



HANELS OUTER LIMITS L3520 -
MATERNAL BROTHER TO DAM OF LOT 109



KBHR HOMESTEAD H016 -
SIRE OF LOT 111

Lot 111 WSCC/HANEL HOMESTEAD M63

GGP

4519134

BW: 79 • Scan Wt: 1380

PB SM • 8/28/24

SIRE HOOK'S BEACON 56B
KBHR HOMESTEAD H016
WS MISS SUGAR C4

DAM STF PAY UP FZ87
WSCC CHEERLEADER 21J
WSCC GRANITE LADY 61B

SCAN DATA Adj. IMF: 2.43 • Adj. BF: 0.19 • Adj. REA: 16.47

CE	BW	WW	YW	ADG	MCE	MLK	MW	STY	DOC	CW	YG	MRB	BF	REA	API	TI
11	2.3	87.5	124.1	0.23	6.7	22.7	66.1	17.6	9	41.3	-0.13	0.38	-0.034	0.55	148.1	88.6

- Completing the aged bull division of the 2026 offering is M63, a purebred sired by KBHR Homestead H016.
- He posts a solid 79 lb. birth weight in his performance data set.
- Brings together growth and carcass merit in a solid EPD profile package.
- Top 25% WW, CW, MARB; Top 30% STAY, API, TI; Top 35% MCE.

THE ANGUS BULLS

Lot 112



- Leading off the Angus division is WSCC/Hanel Rise Above M43, a cool made stud with an excellent build. Admire the power he carries on a correct skeletal construction.
- From the early crops of Stellplug Hoffman Rise Above, a sire group that looks to be bringing length and power to his sons across the country.
- SAV Bruiser daughter on the bottom side to fortify his maternal foundation.
- A high \$M prospect that should make you a pen full of keeper females to build back on.
- Top 20% \$M; Top 30% BW; Top 35% \$W.

Lot 112

WSCC/HANEL RISE ABOVE M43



21261233

BW: 78 • Adj. WW: 793 • Scan WT: 1580

ANGUS • 8/8/24

SIRE HOFFMAN STAGECOACH 1908
STELLPLUG HOFFMAN RISE ABOVE
HOFFMAN 3210 RITA LADY 0256

DAM S A V BRUISER 9164
WHITE STAR KATHY 119E
DA IN FOCUS MISS CATHY 220

SCAN DATA Adj. IMF: 2.2 • Adj. BF: 0.39 • Adj. REA: 17.8 HOMO POLLED • HOMO BLACK

CE	BW	WW	YW	CEM	MLK	CW	MRB	REA	FAT	\$M	\$W	\$F	\$G	\$B	\$C
6	0.3	72	115	4	22	42	0.19	0.57	0.019	82	73	84	29	114	230



STELLPLUG HOFFMAN RISE ABOVE - SIRE OF LOT 112

THE ANGUS BULLS

Lot 113



HANELS TEN PLUS K2002 -
MATERNAL BROTHER TO LOT 113
SIRE OF LOTS 53-57



HANELS FIRESTEEL M4024 - MATERNAL BROTHER TO LOT 113

Lot 113
HANELS OPTIMUM N5000

GGP

21364863

BW: 72 • Adj. WW: 798 • Scan WT: 1360

ANGUS • 1/1/25

SIRE DEER VALLEY GROWTH FUND
DEER VALLEY OPTIMUM 9246
G A R PROGRESS 830

DAM MILL BRAE IDENTIFIED 4031
HANELS MISS IDENTIFIED G9000
MILL BRAE COM MAID 6072

SCAN DATA Adj. IMF: 5.17 • Adj. BF: 0.4 • Adj. REA: 15.6 **HOMO POLLED • HOMO BLACK**

CE	BW	WW	YW	CEM	MLK	CW	MRB	REA	FAT	\$M	\$W	\$F	\$G	\$B	\$C
11	-0.4	84	151	10	31	68	0.99	0.62	0.041	72	94	111	67	178	303

- A true standout that is supported by one of the most impressive Angus females in the Hanel breeding program. G9000 is the dam of \$85,000 Hanel Ten Plus K2002 that was purchased by Kenneth Griffin of Oklahoma.
- Length, power, and capacity! Hanel Optimum N5000 has it all. He's long spined, correct in his structure, with ample depth of body and a pronounced muscle patterned.
- The Deer Valley Optimum 9246 sons will work, whether they are in the Angus or SimAngus division. He does a lot on paper, exceling for calving ease, weaning growth, carcass, and several of the Angus indexes.
- Top 4% \$W; Top 10% YW; Top 15% CED, WW; Top 20% BW, MILK; Top 25% CW, \$F, \$B, \$C; Top 30% CEM, MARB, \$G.

HANEL'S SALE FACILITY • COURTLAND, KANSAS

THE ANGUS BULLS

Lot 114



DEER VALLEY OPTIMUM 9246 - SIRE OF LOTS 113-115



MGR TREASURE - MATERNAL GRANDSIRE OF LOT 114

Lot 114

HANELS OPTIMUM N5004

GGP

21364855

BW: 83 • Adj. WW: 732 • Scan WT: 1240

ANGUS • 1/11/25

SIRE DEER VALLEY GROWTH FUND
DEER VALLEY OPTIMUM 9246
G A R PROGRESS 830

DAM MGR TREASURE
HANELS MISS TREASURE K2003
MILL BRAE TU JOANIE 6190

SCAN DATA Adj. IMF: 5.12 • Adj. BF: 0.3 • Adj. REA: 15.7 HOMO POLLED • HOMO BLACK

CE	BW	WW	YW	CEM	MLK	CW	MRB	REA	FAT	\$M	\$W	\$F	\$G	\$B	\$C
14	0.3	74	143	15	34	64	0.89	0.35	0.083	35	78	102	56	158	240

- N5004 is a powerfully built Angus herd sire prospect. He's well balanced, deep through his middle body, and still carries plenty of mass and muscle shape.
- Backed by a young MGR Treasure dam that should add to his maternal prowess.
- Heifer safe with added growth throughout, topped off with a shot of marbling.
- Top 3% CEM; Top 4% CED; Top 10% MILK; Top 20% YW; Top 25% \$W; Top 30% BW, CW; Top 35% WW, MARB.

THE ANGUS BULLS

Lot 115 HANELS OPTIMUM N5005

GGP

21433906

BW: 84 • Adj. WW: 718 • Scan WT: 1285

ANGUS • 1/12/25

SIRE DEER VALLEY GROWTH FUND
DEER VALLEY OPTIMUM 9246
G A R PROGRESS 830

DAM TOKACH UPDATE 9009
MILL BRAE TU JOANIE 6190
MILL BRAE IF JOANIE 9206

SCAN DATA Adj. IMF: 4.24 • Adj. BF: 0.32 • Adj. REA: 15.2 HOMO POLLED • HOMO BLACK

CE	BW	WW	YW	CEM	MLK	CW	MRB	REA	FAT	\$M	\$W	\$F	\$G	\$B	\$C
10	0.2	62	117	10	29	50	0.97	0.53	0.056	68	64	97	64	161	277

- The final Deer Valley Optimum son possesses the same calving ease and carcass quality genetic package as his brothers in both breed categories.
- His dam from the noteworthy Mill Brae cow herd in the Flint Hills is one hard working Angus female.
- Add a shot of easy calving and high-quality grading all in one with N5005.
- Top 20% CED; Top 25% BW; Top 30% CEM, MILK, MARB; Top 35% \$G.



HANELS OPTIMUM M4004 - FULL BROTHER TO LOT 115

Lot 116 HANELS CRAFTSMAN N5001

GGP

21365135

BW: 88 • Adj. WW: 736 • Scan WT: 1260

ANGUS • 1/6/25

SIRE SITZ RESILIENT 10208
CONNEALY CRAFTSMAN
BLACK CATHY OF CONANGA 8521

DAM CONNEALY BLACKHAWK 618B
HANELS MISS BLACKHAWK H0005
MILL BRAE COM MAID 6072

SCAN DATA Adj. IMF: 5.31 • Adj. BF: 0.23 • Adj. REA: 16.8 HOMO POLLED • HOMO BLACK

CE	BW	WW	YW	CEM	MLK	CW	MRB	REA	FAT	\$M	\$W	\$F	\$G	\$B	\$C
0	3.7	87	148	5	32	47	0.94	0.8	0.006	72	91	75	69	145	260

- Hanel Craftsman N5001 is sired by the \$500,000 Connealy Craftsman, who led the Angus breed in calves registered last year for his owners Select Sires and ST Genetics. Craftsman progeny have been highly sought after in the Angus world.
- Connealy influence on the bottom side of this pedigree as well, with his dam being a Connealy Blackhawk 618B daughter.
- Study his genetic package and you will find a bull that can add growth and marbling to a set of calves in one generation.
- Top 10% WW, \$W; Top 15% YW, MILK; Top 25% \$G; Top 35% MARB.



CONNEALY CRAFTSMAN - SIRE OF LOTS 116 & 117

Lot 117 HANELS CRAFTSMAN N5002

GGP

21364960

BW: 86 • Adj. WW: 702 • Scan WT: 1170

ANGUS • 1/7/25

SIRE SITZ RESILIENT 10208
CONNEALY CRAFTSMAN
BLACK CATHY OF CONANGA 8521

DAM G A R HOMETOWN
HANELS MISS HOME TOWN K2004
MILL BRAE HD ELBA 5028

SCAN DATA Adj. IMF: 7.99 • Adj. BF: 0.32 • Adj. REA: 15.2 HOMO POLLED • HOMO BLACK

CE	BW	WW	YW	CEM	MLK	CW	MRB	REA	FAT	\$M	\$W	\$F	\$G	\$B	\$C
1	3	82	145	2	34	73	1.44	1.14	0.045	70	87	124	95	220	355

- Another Connealy Craftsman son, N5002 comes from a young GAR Home Town dam that is sure to solidify carcass quality into her progeny year after year.
- A big numbered Angus prospect, with elite value for \$B, \$C, and MARB. He will give you the right kind to put into the feedlot and sell on the grid for big premiums.
- Top 5% \$B, \$C; Top 10% MILK, MARB, REA, \$W, \$F, \$G; Top 15% YW, CW; Top 20% WW.



G A R HOME TOWN - MATERNAL GRANDSIRE OF LOT 117

THE YEARLING BULLS

Lot 118



Lot 118 FIELD'S NEXT LEVEL N510

GGP

4574367

BW: 89 • Adj. WW: 859 • Scan WT: 1496 1/2 SM 1/2 AN • 1/12/25

SIRE G A R SUNBEAM
CONNEALY COMMERCE
AVIRA OF CONANGA 814R

DAM KCC1 FOLSOM 512F
FIELD'S MISS FOLSOM LOAD
GLS MISS CUT E10

SCAN DATA Adj. IMF: 4.11 • Adj. BF: 0.52 • Adj. REA: 17.38 HOMO POLLED • HOMO BLACK

CE	BW	WW	YW	ADG	MCE	MLK	MW	STY	DOC	CW	YG	MRB	BF	REA	API	TI
10.7	2.3	103.2	162.7	0.37	7.9	29.1	80.6	14.8	15.9	67.9	-0.04	0.86	-0.015	0.75	163.7	106.2

- Field's Next Level N510 is an intriguing half-blood Simmental herd sire prospect. Sired by the Angus stalwart Connealy Commerce, N510 is attractive in his design and practical in his build. If you want to put some look into a set of calves without giving up performance, study this guy hard.
- The Simmental influence on the bottom side of his pedigree comes from a dam sired by KCC1 Folsom 512F.
- Monstrous 859 lb. adjusted weaning weight for his individual performance.
- Carries a genetic profile that is elite for growth and marbling. His API and TI combination is one of the best in the entire Simmental bull offering.
- N510 is homozygous black and homozygous polled.
- Top 2% WW, TI; Top 3% YW, CW; Top 4% ADG; Top 5% MARB; Top 15% MILK, DOC, API; Top 30% REA.



BRADEN, LAUREN, TATUM, RUSTIN & SUTTON FIELD

The Field family has brought another top notch set of bulls for your appraisal on March 2, 2026! Braden and his family will be offering lots 118 through 122. The bulls have been managed and developed with the Hanel's Black Simmentals bulls since weaning. These 5 bulls are backed by some of the top females in their program, including the GLS Miss Cut E10 donor dam, the foundation of the Field Cattle Company breeding program! These bulls are stout, rugged, and ready for heavy service!

THE YEARLING BULLS

Lot 119



GLS MISS CUT E10 -
MATERNAL GRANDAM OF LOTS 118 & 119



FIELD'S GUNSLINGER -
MATERNAL BROTHER TO DAM OF LOTS 118 & 119



CONNEALY COMMERCE -
SIRE OF LOTS 118-122



2026 NWSS RESERVE GRAND CHAMPION PGS
PEN OF THREE PERCENTAGE SIMMENTAL BULLS -
LOTS 118-120

Lot 119 FIELD'S NASH N508

GGP

4574371

BW: 82 • Adj. WW: 755 • Scan WT: 1426 **1/2 SM 1/2 AN • 1/12/25**

SIRE G A R SUNBEAM

CONNEALY COMMERCE

AVIRA OF CONANGA 814R

DAM MR SR MIC DROP G1534

FIELD'S MISS MIC LIFE

GLS MISS CUT E10

SCAN DATA Adj. IMF: 5.72 • Adj. BF: 0.49 • Adj. REA: 17.5 **HOMO POLLED • HOMO BLACK**

CE	BW	WW	YW	ADG	MCE	MLK	MW	STY	DOC	CW	YG	MRB	BF	REA	API	TI
15.5	0.6	97.2	155.8	0.37	7.6	26.5	75	13.4	14.2	43.5	-0.16	0.66	-0.029	0.71	157.6	100.7

- Another half-blood SimAngus sired by the ST Genetics sales leading Angus Connealy Commerce. N508 is deep bodied and carries shape and power into his rear third. A no-nonsense type of herd sire prospect that will cover all the fundamentals.
- Weighed in at 755 lb. adjusted weaning weight off of his MR SR Mic Drop G1534 dam.
- Another high growth prospect with top of the population YW and TI. Also carries strong CE, MARB, and API figures, making him a well-rounded genetic offering.
- N508 is homozygous black and homozygous polled.
- Top 5% YW, TI; Top 10% WW, ADG; Top 20% CE, MARB, API; Top 25% MILK; Top 30% DOC; Top 35% CW, REA.

THE YEARLING BULLS

Lot 120



- Another cool looking Connealy Commerce son with a level top and hip construction. N506 will certainly find friends on sale day with his build and eye appeal.
- From an OMF Epic E27 dam, his pedigree reads with multi-breed royalty from both sides.
- His 760 lb. adjusted weaning weight measures up well in this sale offering.
- Utilize this bull to add rapid growth to a set of calves.
- N506 is homozygous black and homozygous polled.
- Top 2% WW, YW, CW, REA; Top 10% ADG, TI; Top 25% MILK, YG, FAT; Top 35% MARB, API.

Lot 120

FIELD'S NORMAN N506

GGP

4574358

BW: 84 • Adj. WW: 760 • Scan WT: 1495

1/2 SM 1/2 AN • 1/9/25

SIRE G A R SUNBEAM

CONNELLY COMMERCE

AVIRA OF CONANGA 814R

DAM OMF EPIC E27

FIELD'S MISS EPIC LOAD

FIELD'S MISS I-59

SCAN DATA Adj. IMF: 4.97 • Adj. BF: 0.28 • Adj. REA: 18.82 HOMO POLLED • HOMO BLACK

CE	BW	WW	YW	ADG	MCE	MLK	MW	STY	DOC	CW	YG	MARB	BF	REA	API	TI
11.6	3	105.1	164.9	0.37	7.6	26.6	79	13.8	11.3	69.5	-0.24	0.5	-0.05	1.14	143.7	98.5



OMF EPIC E27 - MATERNAL GRANDSIRE OF LOT 120

THE YEARLING BULLS

Lot 121



- One of the more expressive of these half-blood SimAngus prospects in the Connealy Commerce lineup. His muscle shape is impressive, especially when coupled with his center body shape.
- The NUMBER 1 marbling bulls in the entire sale that scanned with 7.13% IMF to record an IMF Ratio at 130!
- He gets the look and added appeal from his young CCS/JS Doc 48H dam.
- Curve bending genetic predictions here with top notch calving ease coupled with strong growth figures through to yearling.
- N509 is homozygous black and homozygous polled.
- Top 10% CE; Top 20% CW, MARB, TI; Top 25% API; Top 35% BW, WW, YW, REA.



CCS/JS DOC 48H -
MATERNAL GRANDSIRE OF
LOT 121

Lot 122



- Closing the door on the bull offering in N501, a purebred Simmental son of Schooley Kash 964K. Field's Newt N501 is a practically designed herd bull prospect. This young bull is deep, thick, and masculine.
- His dam is a hard-working CCR Cowboy Cut 5048Z daughter who rarely misses in her productive career.
- Study his EPD profile and you will see a bull geared towards maternal traits. He would sire some really nice SimAngus replacement females.
- N501 is the biggest REA bull among the Fields Cattle Company bull division. He is a true beef bull that is loaded with power, substance, and real-world performance!
- N501 is homozygous black and homozygous polled.
- Top 10% MILK; Top 15% STAY; Top 25% FAT; Top 30% YG; Top 35% MCE, API.



GLS MISS CUT E10 -
DAM OF LOT 122

Lot 121 FIELD'S COMMERCE N509

GGP

4574365

BW: 81 • Adj. WW: 657 • Scan WT: 1357 1/2 SM 1/2 AN • 1/12/25

SIRE G A R SUNBEAM
CONNEALY COMMERCE
AVIRA OF CONANGA 814R

DAM CCS/JS DOC 48H
FIELD'S MISS LOLA DOC
FIELD'S MISS WAR OF HOPE

SCAN DATA Adj. IMF: 7.13 • Adj. BF: 0.26 • Adj. REA: 18.37 HOMO POLLED • HOMO BLACK

CE	BW	WW	YW	ADG	MCE	MLK	MW	STY	DOC	CW	YG	MARB	BF	REA	API	TI
16.8	-1.1	83.4	129.2	0.29	7.7	22	63.6	12.2	13.1	51.2	-0.03	0.65	0.014	0.73	152.4	92.9

Lot 122 FIELD'S NEWT N501

GGP

4574376

BW: 51 • Adj. WW: 647 • Scan WT: 1239 PB SM • 1/1/25

SIRE CLRWTR GAME CHANGER H4A
SCHOOLEY KASH 964K
SCHOOLEY MISS 508 964G

DAM CCR COWBOY CUT 5048Z
GLS MISS CUT E10
GLS MISS ROCKY X195

SCAN DATA Adj. IMF: 4.2 • Adj. BF: 0.67 • Adj. REA: 15.3 HOMO POLLED • HOMO BLACK

CE	BW	WW	YW	ADG	MCE	MLK	MW	STY	DOC	CW	YG	MARB	BF	REA	API	TI
12	-0.8	76.5	113.4	0.23	8.2	29.7	67.8	18.9	11.6	32.5	-0.25	0.25	-0.055	0.65	147.8	84.1

SEMEN AVAILABLE ON ALL

HANEL HERD SIRES



ASA: 4523267 • 5/8 SM 3/8 AN
SIRE: BAS MEGA MILLIONS K2801
MGS: CLRS HOMELAND 327H

TOP TIER
PLG TOP TIER 330N

OWNED BY

Hanel's Black Simmentals, Powerline Genetics & Greg Ahlemeyer
An elite SimAngus herd sire prospect that we selected from the Powerline Genetics sale for \$52,000 in January of 2026!

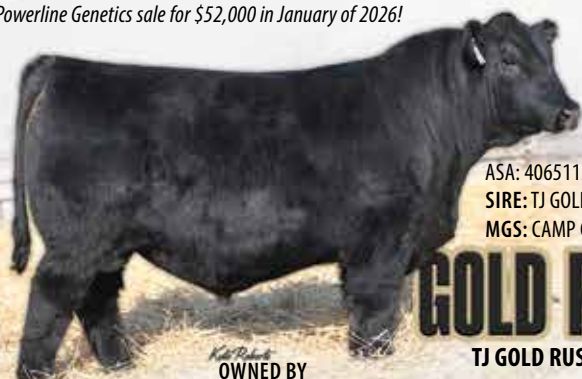


ASA: 4499561 • 3/8 SM 5/8 AN
SIRE: G A R CONTENDER
MGS: KBHR BOLD RULER H152

CHAMPION
CCR CHAMPION 2745M

OWNED BY

Owned by Hanel's Black Simmentals, Cow Camp Ranch,
McDonald Cattle Company & Clear Springs Cattle Company
*The \$79,000 high selling bull from the Cow Camp Ranch Bull Sale this past January!
An elite individual that offers breed leading genomic data!*



ASA: 4065112 • PB SM
SIRE: TJ GOLD 274G
MGS: CAMP CAMPBELL E737

GOLD RUSH
TJ GOLD RUSH 506K

OWNED BY

Hanel's Black Simmentals, Greg Ahlemeyer,
Bonnydale Black Simmentals & Introvigne Grazing Co.
A past high selling bull at the Triangle J Ranch Bull Sale that we have utilized extensively in our breeding program with outstanding results!



ASA: 4342415 • 1/2 SM 1/2 AN
SIRE: KCC1 WALK THE LINE 076J
MGS: SCHIEFELBEIN EFFECTIVE

TIPSY
MMR TIPSY L410

OWNED BY

Hanel's Black Simmentals,
Moriondo Farms & MM Cattle Company
This elite SimAngus herd sire prospect offers a premium blend of calving ease, maternal strength, and carcass merit!

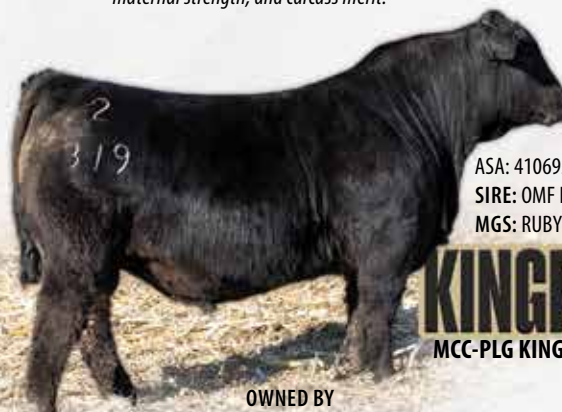


ASA: 4442205 • PB SM
SIRE: RFS HEAVY HITTER H45
MGS: MR SR 71 RIGHT NOW E1538

HOME RUN
W/C HOME RUN 513M

OWNED BY

Hanel's Black Simmentals
*Our selection from the 44th Annual Werning Cattle Company Production Sale!
A true performance standout that offers breed leading growth and REA figures!*



ASA: 4106927 • PB SM
SIRE: OMF HARD RIGHT H21
MGS: RUBYS TURNPIKE 771E

KINGPIN
MCC-PLG KINGPIN 319

OWNED BY

Hanel's Black Simmentals
An incredibly powerful son of the \$60,000 OMF Hard Right H21 that we purchased from Powerline Genetics and Meyring Cattle Company. His progeny highlights this year's sale!

**HANEL'S
BLACK SIMMENTALS**

VOLUME/COMMERCIAL - DISCOUNTS AVAILABLE
Call Brock for pricing and to discuss which bull best fits your breeding program!
BROCK HANEL, DVM: 785.275.1060



THE FEMALES

THE FEMALES

Lot 201



MCC-PLG KINGPIN 319 - SIRE OF LOTS 201-204

Lot 201

HANELS MISS KINGPIN N5165

4537183

BW: 69 • Adj. WW: 595

PB SM • 2/5/25

SIRE OMF HARD RIGHT H21
MCC-PLG KINGPIN 319
W/C MISS WERNING 983G

DAM CCR PAY DIRT 2340C
HANELS MISS PAY DIRT G9028
KAPPES UNITY R381 Z92

CE	BW	WW	YW	ADG	MCE	MLK	MW	STY	DOC	CW	YG	MRB	BF	REA	API	TI
7.4	4.7	100.3	162.1	0.39	5.9	21.5	71.6	15.3	11.7	50.7	-0.3	0.39	-0.08	0.83	145.3	95.3

- What a way to lead off the female division of the Hanel's Black Simmentals 2026 sale. Hanel's Miss Kingpin N5165 has all the features of a donor prospect. She is a purebred that is correct in her lines, about as deep bodied as you can make a heifer, and powerful from all angles. She is certainly going to be a crowd favorite on sale day.
- The MCC-PLG progeny in this offering will be features throughout all sections of this sale offering for their phenotypic quality and functional nature.
- As much as you will love her in person, her data and genetic predictions will also impress. Top-end growth and marbling rankings to add to her allure.
- Top 1% ADG; Top 2% YW; Top 4% WW; Top 10% CW; Top 15% TI; Top 20% MARB; Top 35% API.

Lot 202

HANELS MISS KINGPIN N5211

4537153

BW: 77 • Adj. WW: 622

PB SM • 3/15/25

SIRE OMF HARD RIGHT H21
MCC-PLG KINGPIN 319
W/C MISS WERNING 983G

DAM W/C WIDE TRACK 694Y
HANELS MISS TRACK D6048
HANELS MISS OLIE A3059

CE	BW	WW	YW	ADG	MCE	MLK	MW	STY	DOC	CW	YG	MRB	BF	REA	API	TI
12	1.5	84.7	137.4	0.33	5.5	18.6	60.8	17.3	11.4	49.7	-0.23	0.12	-0.053	0.83	139.1	82.9

- A purebred female in the MCC-PLG Kingpin 319 contingent, backed by a proven cow in the herd that is sired by W/C Wide Track 694Y.
- Posted solid individual performance for birth and weaning weight.
- EPDs that rank highly for calving ease, longevity, growth, and gain. She's a future herd bull dam in the making.
- Top 10% ADG, CW; Top 20% YW; Top 30% CE; Top 35% WW, STAY.



W/C WIDE TRACK 694Y -
MATERNAL GRANDSIRE OF LOT 202

THE FEMALES

Lot 203



Lot 203

HANELS MISS KINGPIN N5170

GGP
4537010

BW: 83 • Adj. WW: 655

5/8 SM 3/8 AN • 2/6/25

SIRE OMF HARD RIGHT H21
MCC-PLG KINGPIN 319
W/C MISS WERNING 983G

DAM HWGW MR INSIGHT B40XX-A13X
MISS HWGW G59-933
MISS FIRST LOOK-933

CE	BW	WW	YW	ADG	MCE	MLK	MW	STY	DOC	CW	YG	MRB	BF	REA	API	TI
11.6	-0.4	86.4	138.9	0.33	7.4	22.1	65	16.4	12.7	38.1	-0.18	0.18	-0.03	0.71	130	82.7

- N5170 is goose neck and square hipped, providing her the opportunity to display a phenomenal profile view. Yet she is still deep in her center body and carries the right muscle shape you expect in a female. This heifer does a lot of things really well.
- This high percentage heifer is one of the heavier weaning weight females in the sale with her 655 lb. adjusted weight.
- Top percentile rankings indicate curve bending genetic prowess from birth to yearling.
- Top 10% ADG; Top 20% YW; Top 25% BW, MCE; Top 30% WW; Top 35% CE, CW.

Lot 204

HANELS MISS KINGPIN N5129

GGP
4537152

BW: 84 • Adj. WW: 660

3/4 SM 1/4 CH • 1/25/25

SIRE OMF HARD RIGHT H21
MCC-PLG KINGPIN 319
W/C MISS WERNING 983G

DAM LT-WC TEMPLETON 1483 PLD ET
HANELS MISS TEMPLE D6047
HANELS MISS POWER Z2066

CE	BW	WW	YW	ADG	MCE	MLK	MW	STY	DOC	CW	YG	MRB	BF	REA	API	TI
6.5	5.1	96.1	153.8	0.36	4.3	20	70.3	16.2	10.3	55.1	-0.4	-0.17	-0.099	1.07	99.1	73.2

- A unique three-quarter Simmental female with a shot of Charolais infused on the bottom side of the pedigree.
- Strong 660 lb. adjusted weaning weight.
- Top of the breed for her growth EPD rankings. She's a future power cow when you study her pedigree, performance, and genomics.
- Top 3% ADG; Top 5% YW, CW; Top 10% WW; Top 20% REA; Top 30% YG.



THE FEMALES

Lot 205



- Here is a future power cow! Deep bodied, full of real muscle, and as balanced as you can draw one up, Hanel's Miss Lawmaker N5060 has a very exciting future ahead of her.
- The first Hanel's Lawmaker L3010 daughters are going to create a stir much like their brothers do in the yearling bull division of the sale.
- Her EPD profiles passes the test for many traits and offers balanced excellence.
- Top 1% CW; Top 10% ADG; Top 15% CE; Top 20% BW; Top 25% YW; Top 30% MCE, STAY, MARB, REA.



HANELS LAWMAKER L3010
SIRE OF LOTS 205-210

Lot 206



- A broody made young female with added center body volume. She is feminine in her features and balanced in her design. She should have a long productive life ahead of her.
- N5106 is a high percentage female from a Rubys Turnpike 771E dam with a nice track record.
- This is the kind of female that can produce a calving ease herd sire for you. Look at her genetic profile and see the CE and BW combined with high API. A strong genetic package.
- N5106 is homozygous polled.
- Top 3% CE; Top 10% BW, MCE; Top 15% STAY, MARB; Top 20% API; Top 25% CW; Top 30% ADG.



RUBYS TURNPIKE 771E
MATERNAL GRANDSIRE OF LOT 206



M4 MS CAPITAL GAINS C75
MATERNAL GRANDDAM OF LOT 206

Lot 205

HANELS MISS LAWMAKER N5060

GGP

4536997

BW: 84 • Adj. WW: 482

3/4 SM 1/4 AN • 1/8/25

SIRE DEER VALLEY OPTIMUM 9246
HANELS LAWMAKER L3010
HANELS MISS AXIS D6071

DAM SFI MOVIN AHEAD F11
WWC SHEZA LOVER 9J
GONSIOR/SD SHEZA UPGRADE

CE	BW	WW	YW	ADG	MCE	MLK	MW	STY	DOC	CW	YG	MRB	BF	REA	API	TI
13.8	-0.9	80.1	134.4	0.34	7.1	19.7	59.7	17.5	11.7	66.3	-0.15	0.3	-0.03	0.98	140.7	82.7

Lot 206

HANELS MISS LAWMAKER N5106

GGP

4537192

BW: 78 • Adj. WW: 545

5/8 SM 3/8 AN • 1/18/25

SIRE DEER VALLEY OPTIMUM 9246
HANELS LAWMAKER L3010
HANELS MISS AXIS D6071

DAM RUBYS TURNPIKE 771E
HANELS MISS TURNPIKE G9501
M4 MS CAPITAL GAINS C75

HOMO POLLED

CE	BW	WW	YW	ADG	MCE	MLK	MW	STY	DOC	CW	YG	MRB	BF	REA	API	TI
17.7	-2.3	67.3	111.4	0.28	9	20.8	54.4	19.3	11.2	41.4	-0.02	0.51	-0.008	0.41	156.6	81.4

THE FEMALES

Lot 207

GGP

HANELS MISS LAWMAKER N5063

4537186

BW: 81 • Adj. WW: 606

5/8 SM 3/8 AN • 1/9/25

SIRE DEER VALLEY OPTIMUM 9246

DAM CCR BOULDER 1339A

HANELS LAWMAKER L3010

HANELS MISS BOULDER G9090

HANELS MISS AXIS D6071

HANELS MISS AXIS A3245

CE	BW	WW	YW	ADG	MCE	MLK	MW	STY	DOC	CW	YG	MRB	BF	REA	API	TI
14.1	0.6	80.7	127.1	0.29	9.3	22.7	63	16.6	15.3	37.7	-0.15	0.25	-0.013	0.73	132.6	79.7

- This young lady is balanced in her type, her performance, and her genetic merit rankings.
- Heifers like this are the kind to add to build the next generation of your cow herd.
- Carries high rankings for calving ease and high growth in her EPD sheet.
- Top 10% MCE; Top 15% CE, DOC; Top 25% ADG; Top 35% YW, CW.



QB BLUEPRINT D47 - MATERNAL GRANDSIRE OF LOT 208

Lot 208

GGP

HANELS MISS LAWMAKER N5201

4537038

BW: 90 • Adj. WW: 712

5/8 SM 3/8 AN • 3/3/25

SIRE DEER VALLEY OPTIMUM 9246

DAM QB BLUEPRINT D47

HANELS LAWMAKER L3010

HANELS MISS BLUEPRINT J1046

HANELS MISS AXIS D6071

TJ MISS 63F

HOMO POLLED • HOMO BLACK

CE	BW	WW	YW	ADG	MCE	MLK	MW	STY	DOC	CW	YG	MRB	BF	REA	API	TI
5.8	3.5	103.7	170.2	0.42	6.1	23.6	75.4	15.2	10.5	71.8	-0.2	0.36	-0.057	0.98	131	92.5

- Take a look at this power cow in the making! A Hanel Lawmaker L3010 daughter with the added power and punch.
- The heaviest adjusted weaning weight of the sale heifers at an outstanding 712 lb.
- An elite growth genetic package. Look at her rankings for WW, YW, and CW!
- N5201 is homozygous black and homozygous polled.
- Top 1% YW, ADG, CW; Top 2% WW; Top 20% TI; Top 25% MARB; Top 30% REA.



HANELS MISS COUNTERTIME M4196 - MATERNAL SISTER TO LOT 210

Lot 209

GGP

HANELS MISS LAWMAKER N5176

4537027

BW: 86 • Adj. WW: 629

1/4 SM 3/4 AN • 2/11/25

SIRE DEER VALLEY OPTIMUM 9246

DAM ANGUS

HANELS LAWMAKER L3010

738

HANELS MISS AXIS D6071

ANGUS

CE	BW	WW	YW	ADG	MCE	MLK	MW	STY	DOC	CW	YG	MRB	BF	REA	API	TI
8	0.2	91.5	156.4	0.41	7.1	22.6	68.2	7.1	13.7	80.9	0.03	0.52	0.015	0.94	123.6	90.8

- N5176 is an impressive low percentage female from the Hanel Lawmaker L3010 group that carries herself with similar quality to her sisters in a different genetic layout.
- Balanced performance for both her birth and adjusted weaning weight measures.
- Another top-notch growth data set, this time with an added shot of MARB on her ledger.
- Top 1% ADG, CW; Top 4% YW; Top 10% MARB; Top 15% WW; Top 25% TI; Top 30% BW, DOC.

Lot 210

GGP

HANELS MISS LAWMAKER N5134

4537026

BW: 69 • Adj. WW: 569

1/4 SM 3/4 AN • 1/25/25

SIRE DEER VALLEY OPTIMUM 9246

DAM ANGUS

HANELS LAWMAKER L3010

726

HANELS MISS AXIS D6071

ANGUS

CE	BW	WW	YW	ADG	MCE	MLK	MW	STY	DOC	CW	YG	MRB	BF	REA	API	TI
12.8	-1.2	75.8	131.1	0.35	9.6	23.4	61.2	10.9	13.7	61.1	0.14	0.73	0.017	0.35	144.2	88.5

- Rounding out the L3010 sire group is N5134, a low percentage female with a world of future.
- You can utilize a female like her in a lot of ways and be successful with her.
- One of the top MARB EPD females in the sale, coupled with a nice 69 lb. birth weight and CE and BW EPDs to match.
- Top 2% CW; Top 3% MARB; Top 4% MCE; Top 5% ADG; Top 15% BW; Top 25% CE; Top 30% YW, DOC, TI; Top 35% API.

THE FEMALES

Lot 211

HANELS MISS GOLD RUSH N5204

4537080

GGP

BW: 78 • Adj. WW: 666

PB SM • 3/5/25

SIRE TJ GOLD 274G
TJ GOLD RUSH 506K
TJ 59H

DAM HANELS WIDE TRACK H0079
HANELS MISS WIDE TRACK K2138
HANELS MISS OPT 8073

CE	BW	WW	YW	ADG	MCE	MLK	MW	STY	DOC	CW	YG	MRB	BF	REA	API	TI
8.3	0.5	92.5	149.7	0.36	5.9	19.6	65.7	19.1	11.5	50.7	-0.31	0.22	-0.067	0.99	148.7	91.1

- Hanel Miss Gold Rush N5204 is a mighty good purebred female that is a broody made cow prospect.
- She's massive and pounds heavy, weighing in at an adjusted weaning weight of 666 lb.
- A high growth genetic package that still ranks well in the breed for API and TI. These females give you a strong genetic foundation to build upon.
- Top 3% ADG; Top 10% YW, CW; Top 15% WW, STAY; Top 25% TI; Top 30% REA, API; Top 35% BW.

TJ GOLD RUSH 506K -
SIRE OF LOTS 211-219



LCDR FAVOR 149F -
MATERNAL GRANDSIRE OF LOT 214



CONNELLY BLACKHAWK 6198 -
MATERNAL GRANDSIRE OF LOT 215



Lot 214

HANELS MISS GOLD RUSH N5189

4537071

GGP

BW: 88 • Adj. WW: 577

PB SM • 2/18/25

SIRE TJ GOLD 274G
TJ GOLD RUSH 506K
TJ 59H

DAM LCDR FAVOR 149F
HANELS MISS FAVOR K2074
HANELS MISS SOURCE F8116

CE	BW	WW	YW	ADG	MCE	MLK	MW	STY	DOC	CW	YG	MRB	BF	REA	API	TI
8.1	1.5	90.9	136.3	0.28	5.2	16.6	63.7	17.5	11.6	43.4	-0.39	0.02	-0.08	1.04	129.9	83.2

- The final purebred offering from the TJ Gold Rush 506K females, N5189 is a high performing lady that will suit many breeding operations.
- Growth genetics are the calling card of her EPD profile.
- Top 20% WW, YW, CW, REA; Top 30% ADG, STAY; Top 35% YG.

Lot 212

HANELS MISS GOLD RUSH N5173

4537081

GGP

BW: 82 • Adj. WW: 686

PB SM • 2/8/25

SIRE TJ GOLD 274G
TJ GOLD RUSH 506K
TJ 59H

DAM HANELS WIDE TRACK H0079
HANELS MISS WIDE TRACK K2141
HANELS MISS DIVIDEND G9080

CE	BW	WW	YW	ADG	MCE	MLK	MW	STY	DOC	CW	YG	MRB	BF	REA	API	TI
10.6	0.3	90.3	146.1	0.35	7.1	21.5	66.6	18.3	11.9	51.4	-0.12	0.41	-0.026	0.73	159	94.5

- N5173 is cut from the same cloth, and logically so. Both are TJ Gold Rush 506K daughters, out of three-year-old Hanel Wide Track H0079 cows.
- She weighed in with a 686 lb. adjusted weaning weight, one of the tops in the sale heifer group.
- One of the highest combinations of API and TI in the female set. She lights up the scoreboard with her EPD percentile rankings.
- Top 5% ADG; Top 10% YW, CW; Top 15% API, TI; Top 20% WW, MARB; Top 25% STAY; Top 30% MCE; Top 35% BW.

Lot 213

HANELS MISS GOLD RUSH N5159

4537120

GGP

BW: 82 • Adj. WW: 578

PB SM • 2/3/25

SIRE TJ GOLD 274G
TJ GOLD RUSH 506K
TJ 59H

DAM HANELS COWBOY CUT D6208
HANELS MISS COWBOY CUT L3140
HANELS MISS TANKER A3242

CE	BW	WW	YW	ADG	MCE	MLK	MW	STY	DOC	CW	YG	MRB	BF	REA	API	TI
11.7	1.7	93.9	139.8	0.29	8.4	20.6	67.5	20.2	13.5	40.3	-0.34	0.14	-0.054	1.05	147.2	88.6

- Purebred TJ Gold Rush 506K from a Hanel Cowboy Cut D6208 first-calf heifer showcases her cow-making pedigree.
- She's the kind you like to have a pasture full of a foundation for the next generation.
- A high-ranking, well balanced EPD profile, ranking highly for several valuable traits.
- Top 10% STAY; Top 15% WW, MCE; Top 20% YW, REA; Top 25% ADG; Top 30% CE, API, TI, DOC, CW.

Lot 215

HANELS MISS GOLD RUSH N5202

4537040

GGP

BW: 76 • Adj. WW: 587

3/4 SM 1/4 AN • 3/4/25

SIRE TJ GOLD 274G
TJ GOLD RUSH 506K
TJ 59H

DAM CONNELLY BLACKHAWK 6198
HANELS MISS BLACKHAWK J1067
HANELS MISS OLIE Y1003

CE	BW	WW	YW	ADG	MCE	MLK	MW	STY	DOC	CW	YG	MRB	BF	REA	API	TI
13.4	-1.7	83	124.7	0.26	9.6	17.9	59.7	19.5	10.8	45.1	-0.2	0.3	-0.026	0.89	144.3	84.5

- N5202 brings modest birth weight and a three-quarter Simmental genetic package to the table.
- A very useful 76 lb. birth weight highlights her individual performance.
- The TJ Gold Rush 506K cattle read well on paper, and N5202 is no exception. She has a very maternally oriented data sheet.
- Top 4% MCE; Top 10% BW; Top 15% STAY; Top 20% CE, CW; Top 30% MARB; Top 35% API.

THE FEMALES

Lot 216

HANELS MISS GOLD RUSH N5193

4537070

BW: 84 • Adj. WW: 607

3/4 SM 1/4 AN • 2/22/25

SIRE TJ GOLD 274G

DAM HANELS TURNBUCKLE G9039

TJ GOLD RUSH 506K

HANELS MISS TURNBUCKLE K2072

TJ 59H

KAPPES PAISLEY 224 Z633

HOMO POLLED

CE	BW	WW	YW	ADG	MCE	MLK	MW	STY	DOC	CW	YG	MRB	BF	REA	API	TI
11.8	-0.1	84	125.6	0.26	5.8	19.5	61.6	19.5	10.3	37.3	-0.09	0.46	-0.021	0.48	147.6	86.4

- A new verse in the same song of attractive made, functional young females from the TJ Gold Rush 506K sire line.
- You will like this heifer if you study the pens on sale day.
- A nice combination of growth, maternal, and carcass highlight her EPD profile.
- N5193 is homozygous polled.
- Top 15% STAY, MARB; Top 30% CE, BW, API; Top 35% WW, TI.



HANELS TURNBUCKLE G9039 - MATERNAL GRANDSIRE OF LOT 216

Lot 217

HANELS MISS GOLD RUSH N5187

4537039

BW: 83 • Adj. WW: 662

3/4 SM 1/4 AN • 2/17/25

SIRE TJ GOLD 274G

DAM HSR POWER PLUS D206

TJ GOLD RUSH 506K

HANELS MISS JACKSON J1052

TJ 59H

M4 MS CAPITAL GAINS C75

CE	BW	WW	YW	ADG	MCE	MLK	MW	STY	DOC	CW	YG	MRB	BF	REA	API	TI
10.5	0.2	95.3	147	0.32	6.4	20.8	68.4	18.1	10.4	62.6	-0.13	0.15	-0.023	0.91	131.4	85.6

- A three-quarter blood Simmental worthy of consideration, she weighed in at 662 lb. adjusted weaning weight, comparing favorably to this year's class of sale heifers.
- A growth focused genetic data set that should lead to raising some powerful offspring.
- Top 2% CW; Top 10% WW, YW; Top 15% ADG; Top 25% STAY; Top 30% BW.

Lot 218

HANELS MISS GOLD RUSH N5210

4537172

BW: 79 • Adj. WW: 667

3/4 SM 1/4 AN • 3/14/25

SIRE TJ GOLD 274G

DAM LRS TOP TEN 104A

TJ GOLD RUSH 506K

HANELS MISS TEN F8028

TJ 59H

ES X51

CE	BW	WW	YW	ADG	MCE	MLK	MW	STY	DOC	CW	YG	MRB	BF	REA	API	TI
10.1	1	89.8	134.5	0.28	6.7	17.8	62.6	17	13.3	52.3	-0.28	0.07	-0.046	1.06	120.5	79.3

- A hefty 667 lb. adjusted weaning weight exhibits her performance potential.
- Imagine the possibilities of the purebred offspring you could create with this lady.
- Another genetic package highlighted by improvement of growth traits.
- Top 10% CW; Top 20% WW, REA; Top 25% YW; Top 30% ADG; Top 35% MCE, STAY, DOC.

Lot 219

HANELS MISS GOLD RUSH N5186

4540864

BW: 88 • Adj. WW: 707

1/2 SM 1/2 AN • 2/17/25

SIRE TJ GOLD 274G

DAM CONNEALY LEGENDARY 644L

TJ GOLD RUSH 506K

HANELS MISS LEGENDARY H0009

TJ 59H

MILL BRAE STIM GLENDA 3114

HOMO POLLED

CE	BW	WW	YW	ADG	MCE	MLK	MW	STY	DOC	CW	YG	MRB	BF	REA	API	TI
9.7	0.8	103.4	161.9	0.37	6.4	21.2	73.2	17.6	13.8	57.8	-0.09	0.62	-0.013	0.81	157.8	101.5

- The finale of the TJ Gold Rush 506K daughters is a half-blood SimAngus female that brings loads of breeding value to the table.
- Here 707 lb. adjusted weaning weight puts her near the top of the class of sale females.
- Big league data set here! Ranks among the breed's elite for many important growth and carcass traits.
- A strong combination of API and TI for focused genetic advancement.
- N5186 is homozygous polled.
- Top 2% WW, YW; Top 3% ADG; Top 4% CW; Top 5% TI; Top 10% MARB; Top 20% API; Top 25% DOC; Top 30% STAY.



CONNEALY LEGENDARY 644L - MATERNAL GRANDSIRE OF LOT 219

THE FEMALES



HARMS HARDWOOD - SIRE OF LOT 220

Lot 220

HANELS MISS HARDWOOD N5206

GGP
4537169

BW: 74 • Adj. WW: 706

PB SM • 3/7/25

SIRE VJT DRIFTWOOD E55
HARMS HARDWOOD
TJ 41Z

DAM HANELS PALE FACE A3024
HANELS MISS PALE E7516
HANELS MISS AXIS B4234

CE	BW	WW	YW	ADG	MCE	MLK	MW	STY	DOC	CW	YG	MRB	BF	REA	API	TI
12.8	1.3	93.6	131.8	0.24	5.9	24.9	71.6	18.5	13.2	37.7	-0.45	0.08	-0.075	1.18	141.6	88

- The only Harms Hardwood female offered this year is a rock-solid purebred female from a proven Hanel Pale Face A3024 dam.
- Curve bending individual performance from her 74 lb. birth weight up to a 706 lb. adjusted weaning weight.
- As is the mantra of this program, there is loads of growth baked into this female's genetic profile.
- Top 10% REA; Top 15% WW, YG; Top 20% STAY; Top 25% CE; Top 30% YW, TI; Top 35% CW, DOC.

Lot 221

HANELS MISS FIREPROOF N5156

GGP
4537162

BW: 85 • Adj. WW: 705

PB SM • 2/23/25

SIRE LCDR FIREPROOF 206H
HANELS FIREPROOF K2518
CCS/UDE SUMMER 22H

DAM HANELS PALE FACE A3024
HANELS MISS PALE D6227
HANELS MISS POWER W9611

HOMO BLACK

CE	BW	WW	YW	ADG	MCE	MLK	MW	STY	DOC	CW	YG	MRB	BF	REA	API	TI
9.7	2.3	88.5	135.1	0.29	4.3	22.9	67.1	14.9	13	44	-0.44	0.25	-0.086	1.16	138.3	88

- Hanel Miss Fireproof N5156 is a high-quality purebred female from the young exciting sire Hanel Fireproof K2518.
- Notice her 705 lb. adjusted weaning weight that is upper level of this class.
- Another top end data sheet for producing powerful cattle with performance.
- N5156 is homozygous black.
- Top 10% REA; Top 20% CW, YG; Top 25% WW, YW, ADG; Top 30% TI; Top 35% DOC.

Lot 222

HANELS MISS FIREPROOF N5188

GGP
4537018

BW: 87 • Adj. WW: 652

PB SM • 2/17/25

SIRE LCDR FIREPROOF 206H
HANELS FIREPROOF K2518
CCS/UDE SUMMER 22H

DAM CCR PAY DIRT 2340C
HANELS MISS PAY DIRT H0177
HANELS MISS NLC A3506

CE	BW	WW	YW	ADG	MCE	MLK	MW	STY	DOC	CW	YG	MRB	BF	REA	API	TI
4.7	3.9	98.9	160.3	0.38	4.7	24.4	73.8	14.3	11.3	63.9	-0.23	0.34	-0.054	0.98	137	93.2

- N5188 will garner plenty of attention within this group of heifers that spread quality from top to bottom.
- Performs well with her 652 lb. adjusted weaning weight.
- Top-tier growth EPDs with an added shot of marbling ability in her script.
- Top 2% ADG, CW; Top 3% YW; Top 5% WW; Top 20% TI; Top 25% MARB; Top 30% REA.



CCR PAY DIRT 2340C - MATERNAL GRANDSIRE OF LOT 222

THE FEMALES



HANELS HIGH NOON K2504 - SIRE OF LOT 224

Lot 223



HANELS MISS CHIEF N5196

4537103

BW: 89 • Adj. WW: 615

3/4 SM 1/4 AN • 2/25/25

SIRE TJ CHIEF 460G

DAM LCDR FIREPROOF 206H

HANELS CHIEF L3134

HANELS MISS FIREPROOF L3045

WWC SHEZA LOVER 9J

HANELS MISS STATE OF WAR J1024

CE	BW	WW	YW	ADG	MCE	MLK	MW	STY	DOC	CW	YG	MRB	BF	REA	API	TI
8.9	2.2	92.3	145.4	0.33	4.8	24.4	70.4	18.1	11.4	54.6	-0.21	0.33	-0.049	0.84	135.6	86.6

- The only female sired by Hanel Chief L3134, N5196 is a three- quarter Simmental female with quality to burn.
- Growth, carcass, and maternal function highlight her EPD profile that should suit many producers.
- Top 10% YW, ADG, CW; Top 15% WW; Top 25% STAY; Top 30% MARB; Top 35% TI.

Lot 224



HANELS MISS HIGH NOON N5122

4537194

BW: 75 • Adj. WW: 607

1/2 SM 1/4 CH 1/4 CS • 1/22/25

SIRE KBHR HIGH ROAD E283

DAM ANGUS

HANELS HIGH NOON K2504

G9529

HANELS MISS COWBOY CUT H0537

ANGUS

CE	BW	WW	YW	ADG	MCE	MLK	MW	STY	DOC	CW	YG	MRB	BF	REA	API	TI
10	0.5	88.3	133.6	0.28	8.5	20.3	64.4	10.5	13	22	-0.43	0.02	-0.084	0.84	106	78.8

- A unique percentage Simmental with a shot of Charolais genetics in her pedigree.
- Modest 75 lb. birth weight for her performance ledger.
- Balanced EPD profile with maternal and growth traits alike.
- Top 10% MCE; Top 20% YG; Top 25% WW, YW; Top 30% ADG; Top 35% BW, DOC.



INDUSTRY PARTNERS



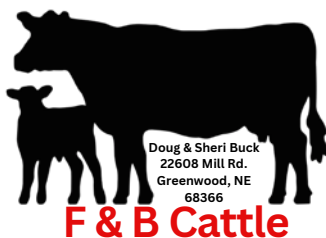
Clark County Feeders
Matt Shelor: (620) 885-4251



Klug Feedyard, LLC
Beau Klug: (402) 910-2217



Legacy Cattle Company
Trey Duensing: (402) 460-7620



Marvin Boyles: (785) 545-5611
Brock Hanel: (785) 275-1060



Mankato Livestock Inc.
Office: (785) 378-3283



Cherokee Sales Co.
Office: (580) 596-3361



Mitchell Livestock Auction
Office: (605) 996-6543

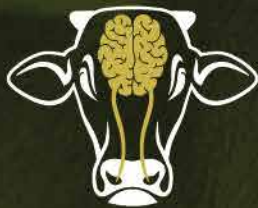


Schou Feeders
Einer Schou: (785) 747-8154

Bruns Ranch
Zach & Jen Bruns - (785) 647-2002

Golden West Feed Yards, Inc
Rick & Jacob Nekl: (402) 527-5220





FerAppease®
Maternal Bovine Appeasing Substance

**STRESS IS KILLING
YOUR CALVES.
BLOCK THE STRESS.
PROTECT YOUR CALVES.**

**Receive your Cattle
with FerAppease®.**

**Recent Texas A&M study finds that FerAppeased calves
had more than a 70% reduction in overall mortality.**

EXPERIMENTAL DESIGN

120 Intact 4-weight Angus-Influenced steers from MS auction yard
Transported for 12 h to College Station, TX
Rested for 24 h | Initial processing on day 0

Day 0:

- Vaccines, dewormer, implant, metaphylaxis, castration
- Assigned to receive FerAppease or control (n = 60/each)
- Distributed in drylot pens with 12 steers of treatment

Day 14 and on:

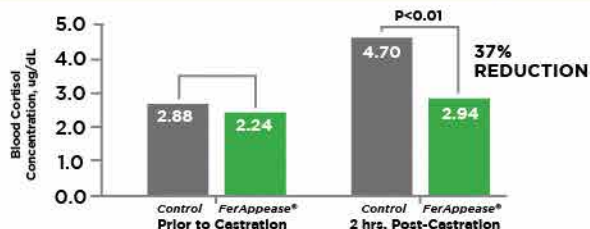
- Vaccine + FerAppease booster on day 14
- BW and sampling on days 0, 14, 28, 42, and 60
- Feed intake and incidence of BRD monitored daily

Receiving Cattle with FerAppease®

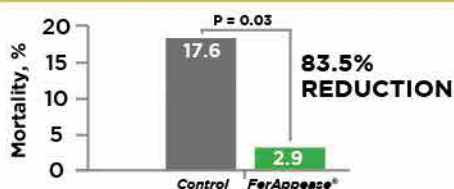
**Dosage Rate: Apply a Total Dose of 10cc. 5cc
on the muzzle + 5cc behind the poll.**

FerAppease® Reduced Blood Cortisol Levels.

Cortisol put calves into fight or flight mode. By
reducing cortisol, FerAppease mitigates the
calf's stress from castration and arrival.



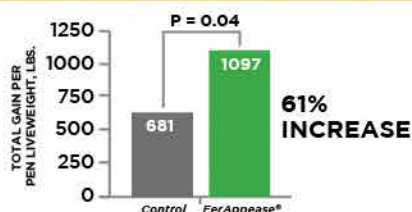
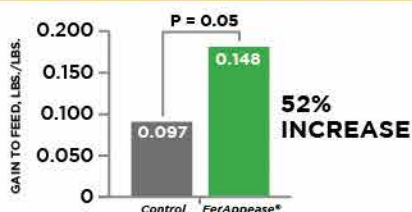
FerAppease® Reduced Mortality to BRD



Cortisol mobilizes energy to fight an immediate threat. This
action deprives the calf's immune system of energy and
weakens its ability to fight off disease, increasing mortalities.

Through the reduction of cortisol, FerAppease® keeps energy in the immune
system. Strong, energy-rich immune systems drive reduced mortalities.

FerAppease® Increased Feed Efficiency & Total Gain, lbs.



MORE CALVES + MORE POUNDS = MORE PROFIT.

**Bottom-Line: FerAppease Keeps your Calves Alive.
Healthier Calves means Healthier Pockets.**



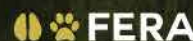
Dr. Reinaldo Fernandes Cooke
Texas A&M University

**Begin treating your calves
today with FerAppease®.**



SCAN HERE
FOR MORE
INFORMATION

FOR MORE INFORMATION, VISIT
WWW.FERA.AH.COM



Diagnostics
and Biologicals



PO BOX Z
DE SOTO, KS 66018

Presorted
First Class
US Postage
PAID
SlateGroup

SIMMENTAL | SIMANGUS™ | ANGUS

120+ YEARLING & AGED BULLS | 20+ OPEN FEMALES

