

Inaugural Production Sale



February 26, 2026

1 pm MDT

*Montana Expo Park
Great Falls, Montana*



Live Broadcast on



Kate Lorne

Rockin' K Ranch Inaugural Production Sale

**Thursday, February 26, 2026
1:00 PM**

Metro Park Livestock Pavilion



Auctioneer:
Cole Morrison (406) 403-8334

Sale Management:

Glenn Davis, Genetic Pathways
(219) 776-7584

Representatives:

Chase Mury, Universal Semen Sales (406) 590-1069
Kurt Kangas, American Angus (406) 366-4190



Watch the Sale

"Broadcasting Live" on CCI.live!

www.CCI.live - Live Online Bidding

(405) 400-9505 Text/Call - schedule@cci.live

Find us on the App Store and Google Play

Over 35 years in livestock marketing!

Viewing the Cattle:

Cattle will be available for viewing at the sale site beginning February 25th through Sale Day. Prior to the sale they are located west of Great Falls - give Tyler a call to make arrangements to view prior to the 25th.

Hospitality:

A hot lunch and beverages will be provided prior to the sale. You are invited to a sit down dinner following the sale at the Family Living Center - Montana Expo Park.

Tyler Williams, Owner
(406) 899-2838

Sale Day Contacts

Tyler Williams (406) 899-2838

Chase Mury (406) 590-1069

Glenn Davis (219) 776-7584

Sale Location:

Montana Expo Park, Livestock Pavilion
400 3rd St NW, Great Falls, MT

Delivery:

Free delivery on bulls selling within a 250 mile radius. Bull delivery will begin April 1. \$200/head discount for bulls picked up sale day. Please let the clerks know your delivery plans. When delivering bulls we may deliver to a central location spot such as vet clinics, sale barns or ranch. We ask in advance for your cooperation in making arrangements.

Cow and Heifer Delivery will be at the buyers expense. We are happy to help with arrangements. You may also contact:

Lathrop Trucking:

Randy Lathrop (847) 910-4673

Evan Bixby (319) 559-0167

Settlement:

All lots are to be settled for prior to shipping out unless prior arrangement has been made with the manager/owner.

Bull and First Breeding Season Guarantee:

We guarantee the fertility status on all our bulls.

All bulls are guaranteed sound and will be fertility tested by a veterinarian prior to sale date.

All animals left at the ranch do so at the buyer's risk. We suggest mortality insurance on all animals. Stockman Insurance will be on site to assist with insurance needs.

Terms & Conditions:

Bulls sell under the suggested terms and conditions of the American Angus Association. All bulls sell with full possession and 1/2 semen sharing interest.



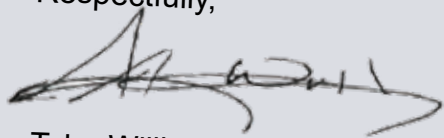
Welcome to our 2026 First Annual Production Sale! It truly is an honor and a pleasure to write this letter as we prepare for our first sale. Please allow me to introduce who we are and what our program has to offer. My wife and I were both born and raised in beautiful Great Falls, MT. We are celebrating our tenth wedding anniversary this month, and continue to reside in Great Falls - raising our son and daughter in the same great community we have always known and loved. For many years, I had dreamed of owning a piece of God's country, to grow and offer elite genetics to the cattle industry, and to be a part of the incredible cattle community. In 2022, Rockin K Ranch Company was created and we hit the ground running to achieve those dreams. From the beginning, we have sourced elite genetics far and wide stretching from Montana to Florida and in-between to bring high-quality, total outcross bred animals to other ranchers.

Now, after three years, we are ecstatic to offer an incredible group of herd-sire prospects. With 24 bulls to offer this year, we are confident the quality is extremely high. To reflect the goals of our program, these bulls as well as the heifers show a combination of great quality phenotype with elite EPDs.

We are very thankful for the relationships we have gained, for the fellow ranchers who have shared their advice and wisdom and welcomed us into this amazing industry, and the customers who have given us their support. We can't wait to show you how Rockin K can be a source of power, growth, and maternal genetics for your herd.

Our team has worked diligently to bring our best offering to this sale, and we thank you for your interest in our program. We look forward to seeing you Thursday, February 26th at the Montana ExpoPark Livestock Pavillion. You are welcome to join us that morning from 9:00-12:00 to view the animals and to ask any questions you may have. We are excited to meet you and to have a fun-filled day with good company. Be sure to stick around for dinner following the conclusion of our sale.

Respectfully,



Tyler Williams and Family



MAR

Pacifico 260

AAA 20572405 • 1/13/2022



**STANDOUT
PHENOTYPE**
with
**HERD BULL
PRESENCE**

Kato Roberts

CED	BW	WW	YW	MLK	MRB	RE	SM	SW	SB	SC
11	1.5	72	131	17	1.26	0.62	70	60	189	315
15%	60%	20%	20%	95%	5%	50%	30%	40%	5%	3%

Hoover No Doubt
Sterling Pacific 904
Baldridge Isabel B082



Baldridge Alternative E125
MAR Miss Amy 9012
MAR Miss Amy 1743

Pacifico is a moderate bull with great feet and an outstanding calving ease prospect with adequate growth. He has the look to make tremendous females that will last for years to come.

His mother is a Baldridge Alternative daughter with a beautiful udder and great feet - the kind that will breed back early, raise an exceptional calf and become a fixture in the herd. Her bull calves to date have averaged over \$15,000.



YOUR ONE STOP SEMEN SHOP.

UNIVERSAL SEMEN SALES

7 Tourmaline Lane • Great Falls, Montana 59404 • 406-453-0374 • 1-800-227-8774
chaseuniversalsemen@gmail.com • certsuniversalsemensales@gmail.com

Take Home a 2026 Honda Rancher 4x4!

Buyers of each lot purchased will be entered in a drawing to be held following the sale dinner.



FASTER PROGRESS, GREATER RETURNS

Targeting the Brand™ identifies registered Angus bulls with the genetic potential to sire calves more likely to meet all 10 Certified Angus Beef® brand specifications.



Minimum Genetic Requirements

Marbling EPD (Marb) +0.65

Grid Value (\$G) +55.0

For more information on Targeting the Brand™ visit CABcattle.com.

Ambitious Genetics



Lot 1

RKR/CA Aspire 5001

1

Birth Date: 12/25/2024 Bull: +*21208476 Freeze Brand: 5001

SEO Ultra Provider
FF Rito Ambitious
RMRK Rita 0237



SG Salvation
Gaffney Lady 2106

Linz Lady Sensation 453-7386 RB Lady Denver 167-453

G A R Momentum K836
Chair Rock Progress 3023
Thomas Edison 6764
RMRK Rita 8232
Baldridge Alternative E125
MGR JP Rita 7037
S A V Sensation 5615
RB Lady Denver 167-453

Act Birth Wt

ET

Adj WW

741

CED	BW	WW	YW	SC	DOC	CLAW	ANGLE	HS
+9	+1.3	+78	+140	+19	+18	+42	+46	+39
HP	MILK	CWT	MARB	REA	\$M	\$W	\$B	\$C
+10.6	+20	+69	+1.48	+92	+64	+71	+221	+351

CED	BW	WW	YW	DMI	YH	SC	Doc	Claw	Angle	PAP	HS	HP	CEM	Milk	MW	MH	CW	Marb	REA	Fat	Tend
41	29	38	18	74	81	36	44	25	41	4	18	15	1	82	31	67	12	5	33	83	80

Ranks in the top 3% for CEM; top 5% for \$B; top 10% for RADG, PAP, Marb, \$F, \$G and \$C; top 20% for YW and CW; top 25% for WW, Claw and RE.

Now here's something really special, a flush brother to Crave 5002, this one will definitely be a sale highlight, a ton of middle, wide based with an attractive pattern, backed by one of the best cow families in the industry. Anytime you see 453 in the pedigree you can expect massive power, very balanced look with tremendous phenotype, there's a reason this cow has gone on and produced over \$10 million in progeny. 5001 has a double digit CED with tremendous growth, very good CEM, controlled mature height and mature weight, excellent foot scores, negative PAP, tremendous carcass values with outstanding dollar figures.

Reference Sire



FF Rito Ambitious





XK RKR/CA Crave 5002

2

Birth Date: 12/28/2024 Bull: +*21208478 Freeze Brand: 5002

SEO Ultra Provider
FF Rito Ambitious
RMRK Rita 0237



SG Salvation
Gaffney Lady 2106

Linz Lady Sensation 453-7386 RB Lady Denver 167-453

G A R Momentum K836
Chair Rock Progress 3023
Thomas Edison 6764
RMRK Rita 8232
Baldridge Alternative E125
MGR JP Rita 7037
S A V Sensation 5615

Act Birth Wt:

ET

Adj WW

819



CED	BW	WW	YW	SC	DOC	CLAW	ANGLE	HS
+2	+2.9	+100	+173	+1.56	+30	+48	+46	+22
HP	MILK	CWT	MARB	REA	\$M	\$W	\$B	\$C
+9.4	+14	+93	+1.41	+1.07	+45	+79	+238	+354

CED	BW	WW	YW	DMI	YH	SC	Doc	Claw	Angle	PAP	HS	HP	CEM	Milk	MW	MH	CW	Marb	REA	Fat	Tend
54	25	6	7	90	71	6	4	63	48	20	9	51	31	97	22	54	3	4	22	66	79

Ranks in the top 1% for WW, YW, CW and \$F; top 2% for \$B; top 5% for \$C; top 10% for RADG, DOC, MW, Marb and \$G; top 15% for SC, HS and RE; top 25% for \$W.

This special sale highlight is another flush brother to 5001, that is very attractive, wide based with a big round hip, tracing back to the greatest cow family on the planet. The earning potential of these young sires by the great 453 is unlimited, she has had over 10 sons sell for over \$100,000. 5002 has top 1% WW along with top 1% YW, excellent scrotal, controlled mature height, tremendous docility, balanced foot scores, top 1% CW, top 10% marbling, outstanding RE with balanced dollar values.



XK RKR/CA Avidity 5003

3

Birth Date: 12/30/2024 Bull: +*21208435 Freeze Brand: 5003

SEO Ultra Provider
FF Rito Ambitious
RMRK Rita 0237



Connealy Clarity
AH/B I G Clarity 0184 4425
B&B Rita 0184

G A R Momentum K836
Chair Rock Progress 3023
Thomas Edison 6764
RMRK Rita 8232
Cherry Creek Land Grant
Breshie of Conanga 6988
E W A Peyton 642
H P C A Surefire P457

Act Birth Wt:

ET

Adj WW

838



CED	BW	WW	YW	SC	DOC	CLAW	ANGLE	HS
+6	+3.8	+96	+173	+1.55	+21	+52	+44	+27
HP	MILK	CWT	MARB	REA	\$M	\$W	\$B	\$C
+9.1	+23	+93	+1.45	+1.18	+58	+79	+256	+390

CED	BW	WW	YW	DMI	YH	SC	Doc	Claw	Angle	PAP	HS	HP	CEM	Milk	MW	MH	CW	Marb	REA	Fat	Tend
75	91	8	1	75	20	2	47	60	60	88	17	58	70	67	6	10	5	5	11	3	57

Ranks in the top 1% for YW, RADG, CW, \$F, \$B and \$C; top 2% for WW; top 3% for YH and Fat; top 4% for MH and \$G; top 5% for MW; top 10% for Marb and RE; top 15% for SC, Teat and UDDR; top 20% for HS; top 25% for \$W.

This special sale highlight is a flush brother to Ludacris 5011 and Dynamo 5010. An extra long bull with a ton of growth. Top 2% of the breed for WW and has 18 EPD's in the top 15% or better, if you want growthy calves take a look here, he will put pounds on the ground. 5003 has top 1% YW and top 2% WW, excellent top 15% scrotal, very good teat and udder scores, good docility, top 1% CW, top 10% for MARB and RE to go along with a tremendous set of dollar values.

No Doubt About It!



RKR/CA No Doubt 5008

4

Birth Date: 01/05/2025 Bull: +*21211559 Freeze Brand: 5008

Mogck Bullseye
Hoover No Doubt

Miss Blackcap Ellston J2



Jindra Stonewall

RRR-7 Oaks Blackbird R0919

RRR Blackbird E147

MOGCK Sure Shot

Mogck Mary 1255

SydGen C C & 7

Miss Blackcap Ellston D154

Jindra Acclaim

Jindra Ebony J 707 593

Poss Easy Impact 0119

Baldrige Blackbird A030

Act Birth Wt

ET

Adj WW

764

CED	BW	WW	YW	SC	DOC	CLAW	ANGLE	HS
+6	+0.6	+61	+106	+70	+26	+54	+51	+43
HP	MILK	CWT	MARB	REA	\$M	\$W	\$B	\$C
+11.6	+25	+49	+1.30	+58	+79	+66	+187	+322

CED	BW	WW	YW	DMI	YH	SC	Doc	Claw	Angle	PAP	HS	HP	CEM	Milk	MW	MH	CW	Marb	REA	Fat	Tend
32	4	81	89	9	99	67	20	76	80	42	34	71	17	62	95	93	71	6	65	99	54

Ranks in the top 10% for DMI and \$EN; top 15% for CEM, Marb, \$G and \$C; top 20% for DOC and \$B; top 25% for \$M.

This special sale highlight has been a crowd favorite since birth. A moderate bull with a ton of muscle expression and shape. Big boned with an extra wide base. Sired by the now deceased Hoover No Doubt. On the bottom side this young sire traces back to Blackbird A030, one of the most feminine total package females ever produced in this breed. 5008 has an excellent BW, very good scrotal and HP combination, excellent CEM, tremendous docility, nice PAP, top 15% MARB with an outstanding set of dollar values.

Reference Sire



Hoover No Doubt

Ambitious Herd Builders



Lot 5

RKR/CA Dynamo 5010

5

Birth Date: 01/06/2025 Bull: +*21226746 Freeze Brand: 5010

SEO Ultra Provider
FF Rito Ambitious
RMRK Rita 0237



Connealy Clarity
AH/B I G Clarity 0184 4425
B&B Rita 0184

G A R Momentum K836
Chair Rock Progress 3023
Thomas Edison 6764
RMRK Rita 8232
Cherry Creek Land Grant
Breshie of Conanga 6988
E W A Peyton 642
H P C A Surefire P457

Act Birth Wt
ET
Adj WW
769

CED	BW	WW	YW	SC	DOC	CLAW	ANGLE	HS
+9	+2.6	+78	+143	+1.12	+28	+.44	+.36	-.12
HP	MILK	CWT	MARB	REA	\$M	\$W	\$B	\$C
+10.6	+24	+80	+1.55	+1.16	+61	+66	+249	+384

CED	BW	WW	YW	DMI	YH	SC	Doc	Claw	Angle	PAP	HS	HP	CEM	Milk	MW	MH	CW	Marb	REA	Fat	Tend
45	67	33	7	69	49	3	13	32	12	81	1	45	58	65	13	11	14	2	23	7	69

Ranks in the top 1% for HS and \$B; top 2% for Fat, \$F and \$C; top 3% for \$G; top 5% for Marb; top 10% for RADG, Angle, MH, CW and RE; top 15% for YH and DOC; top 20% for YW and MW; top 25% for WW.

Here is another flush brother to Ludacris 5011 and Avidity 5003. A big frame bull with a lot of length that has 15 EPD's In the top 15% or better of the breed. As you notice Clarity and Peyton are in the pedigree which always brings you a ton of female look to go along with outstanding length and power. 5010 has a double digit CED, excellent growth, great scrotal and HP combination, controlled mature height, excellent foot scores, outstanding docility, top 10% for all four carcass values to go along with outstanding dollar values.



Lot 6

RKR/CA Ludicrous 5011

6

Birth Date: 01/7/2025 Bull: +*21208438 Freeze Brand: 5011

SEO Ultra Provider
FF Rito Ambitious
RMRK Rita 0237



Connealy Clarity
AH/B I G Clarity 0184 4425
B&B Rita 0184

G A R Momentum K836
Chair Rock Progress 3023
Thomas Edison 6764
RMRK Rita 8232
Cherry Creek Land Grant
Breshie of Conanga 6988
E W A Peyton 642
H P C A Surefire P457

Act Birth Wt
ET
Adj WW
743

CED	BW	WW	YW	SC	DOC	CLAW	ANGLE	HS
+6	+3.6	+83	+149	+1.03	+31	+.38	+.31	+.09
HP	MILK	CWT	MARB	REA	\$M	\$W	\$B	\$C
+8.0	+21	+77	+1.74	+1.41	+70	+69	+256	+402

CED	BW	WW	YW	DMI	YH	SC	Doc	Claw	Angle	PAP	HS	HP	CEM	Milk	MW	MH	CW	Marb	REA	Fat	Tend
45	79	34	15	38	90	32	10	23	4	71	3	70	69	91	52	81	21	1	5	4	76

Ranks in the top 1% for Fat, \$G, \$B and \$C; top 2% for Angle and RE; top 3% for Marb; top 4% for RADG, DOC, HS and \$F; top 10% for CW; top 15% for WW, YW and Claw.

Here is one more flush brother to Dynamo 5010 and Avidity 5003. Long deep bull, with the highest \$C In the offering, he has 17 EPD's in the top 15% of the breed, that is true genetic excellence. 5011 has top 10% YW, very good scrotal, controlled mature height and mature weight, top 4% docility, top 2% angle, top 10% for all four carcass traits with big-time dollar values.

Faithful Herd Sire Prospects



Lot 7

RKR Faithful 5054

7

Birth Date: 03/04/2025

Bull: +*21231971

Freeze Brand: 5054

HPCA Veracious
44 Faithful 2764
DCF Ruby of Tiffany 6799



S S Niagara Z29
Stone Creek Lady 453-1101
RB Lady Denver 167-453

Mill Brae Identified 4031
H P C A Sunrise A246
V A R Generation 2100
DCF Ruby of Tiffany 7592
Hoover Dam
Jet S S X144
EXAR Denver 2002B
R B Lady Party 167-305

Act Birth Wt

ET

Adj WW

799

CED	BW	WW	YW	SC	DOC	CLAW	ANGLE	HS
+7	+2.3	+83	+153	+52	+28	+45	+43	+40
HP	MILK	CWT	MARB	REA	SM	\$W	\$B	\$C
+8.6	+22	+79	+1.43	+1.34	+60	+73	+228	+356

CED	BW	WW	YW	DMI	YH	SC	Doc	Claw Angle	PAP	HS	HP	CEM	Milk	MW	MH	CW	Marb	REA	Fat	Tend	
56	82	14	5	92	69	61	4	26	9	81	43	87	80	71	36	51	13	11	6	38	99

Ranks in the top 3% for RE; top 4% for \$B; top 5% for \$G and \$C; top 10% for YW, CW, Marb and \$F; top 15% for WW, RADG and DOC.

Here is another son out of the great Stonecreek Lady 453-1101, this one has all the power and look you would expect from this great donor female. 5054 has a tremendous birth to growth relationship, very controlled mature height and mature weight, top 15% docility, very good foot scores, top 10% CW, top 10% marbling, top 3% RE with big-time dollar values.



Lot 7

RKR Faithful 5056

8

Birth Date: 03/05/2025

Bull: +*21251556

Freeze Brand: 5056

HPCA Veracious
44 Faithful 2764
DCF Ruby of Tiffany 6799



S S Niagara Z29
Stone Creek Lady 453-1101
RB Lady Denver 167-453

Mill Brae Identified 4031
H P C A Sunrise A246
V A R Generation 2100
DCF Ruby of Tiffany 7592
Hoover Dam
Jet S S X144
EXAR Denver 2002B
R B Lady Party 167-305

Act Birth Wt

ET

Adj WW

678

CED	BW	WW	YW	SC	DOC	CLAW	ANGLE	HS
+10	+1.5	+78	+147	+26	+27	+50	+48	+66
HP	MILK	CWT	MARB	REA	SM	\$W	\$B	\$C
+9.2	+31	+85	+1.54	+1.29	+57	+82	+247	+377

CED	BW	WW	YW	DMI	YH	SC	Doc	Claw	Angle	PAP	HS	HP	CEM	Milk	MW	MH	CW	Marb	REA	Fat	Tend
8	27	33	6	81	44	91	6	65	54	62	75	86	67	20	47	50	10	5	7	63	93

Ranks in the top 1% for \$F; top 2% for \$B and \$C; top 3% for RADG; top 4% for CW, RE and \$G; top 5% for Marb; top 15% for YW and DOC; top 20% for CED, Milk and \$W; top 25% for WW.

Now here is one that has a ton of breeding potential, a calving ease bull with a ton of style and shape, sired by the great 44 Faithful and out of the \$150,000 valued female Stonecreek Lady 453-1101. A full brother sold in the 2026 National Angus Bull Sale in OKC. He was purchased by CRV Stud and will be available to use AI this spring. 453 is a true legend of the breed, with her producing over \$10 million in progeny, she is a female that can be used nationwide in any geographic region. 5056 has a double digit CED with a very good BW, excellent YW, tremendous CEM, top 20% milk, controlled mature height and mature weight, top 15% docility, balanced foot scores, top 4% CW along with top 5% MARB and 4% RE with an outstanding set of dollar values.

Reference Sire



44 Faithful 2764

Reference Dam



Stone Creek Lady 453-1101

Scotchman Sons



RKR Scotchman 5019

9

Birth Date: 01/22/2025

Bull: *21208390

Freeze Brand: 5019

Connealy Clarity
Connealy Scotchman
Pasha of Conanga 557P



Riverbend Index E316
M A R Miss Amy 2028
M A R Miss Amy 1542

Cherry Creek Land Grant
Breshie of Conanga 6988
Plattmehere Weigh Up K360
Pastah of Conanga 030L
V A R Index 3282
Riverbend Lady B066
SydGen FATE 2800
CAR Miss Amy 591

Act Birth Wt

87

Adj WW

803

CED	BW	WW	YW	SC	DOC	CLAW	ANGLE	HS
+11	+0.6	+88	+157	+1.79	+29	+49	+59	+49
HP	MILK	CWT	MARB	REA	\$M	\$W	\$B	\$C
+11.4	+21	+88	+1.12	+96	+61	+82	+223	+350

CED	BW	WW	YW	DMI	YH	SC	Doc	Claw	Angle	PAP	HS	HP	CEM	Milk	MW	MH	CW	Marb	REA	Fat	Tend
7	19	12	9	69	30	2	5	54	96	61	30	32	61	88	23	31	2	14	12	52	24

Ranks in the top 1% for \$F; top 3% for CW; top 5% for \$B; top 10% for WW, YW, RADG, YH, SC, DOC and \$C; top 15% for CED and \$G; top 20% for MW, MH, Marb and \$W; top 25% for RE.

If you're looking to breed heifers here is a double digit calving ease bull with a ton of middle, long made with a herd bull look, has been one of the favorites since birth. 5019 traces back to the Miss Amy cow family, one that was made famous at the Malek Angus ranch in Montana. 5019 has a double digit CED along with a very good BW, top 10% YW, outstanding scrotal and HP combination, top 30% CEM, controlled mature height and mature weight, excellent docility, near perfect carcass values with big-time dollar figures.



Lot 9

Reference Sire



Connealy Scotchman



RKR Scotchman 5016

10

Birth Date: 01/19/2025

Bull: *21208391

Freeze Brand: 5016

Connealy Clarity
Connealy Scotchman
Pasha of Conanga 557P



Baldrige Alternative E125
M A R Lucy 0101
M A R Lucy 1608

Cherry Creek Land Grant
Breshie of Conanga 6988
Plattmehere Weigh Up K360
Pastah of Conanga 030L
Poss Easy Impact 0119
Baldrige Blackbird A030
2 Bar Twenty X
M A R Lucy 1206

Act Birth Wt

76

Adj WW

582

CED	BW	WW	YW	SC	DOC	CLAW	ANGLE	HS
+8	+1.6	+75	+120	+2.12	+17	+47	+58	+14
HP	MILK	CWT	MARB	REA	\$M	\$W	\$B	\$C
+11.6	+18	+52	+84	+1.05	+64	+67	+168	+282

CED	BW	WW	YW	DMI	YH	SC	Doc	Claw	Angle	PAP	HS	HP	CEM	Milk	MW	MH	CW	Marb	REA	Fat	Tend
58	60	19	67	12	87	1	43	33	92	41	3	44	59	89	39	71	41	44	6	53	30

Ranks in the top 2% for SC; top 10% for DMI and HS; top 15% for RE.

Here is the paternal brother to 5019. He is a bit more moderate with a huge middle, this one really packs a punch for performance. 5016 has a double digit CED with very good growth, top 2% scrotal with a very good HP, excellent fluid longevity, controlled mature height and mature weight, balanced foot scores, top 15% RE with outstanding dollar values.



Lot 10

The Key to Superior Genetics



KK RKR Keystone 5005

11

Birth Date: 01/03/2025 Bull: *21215929 Freeze Brand: 5005

EZAR Step Up 9178
Basin Keystone 2021
Basin Joy 9140



Riverbend Index E316
M A R Lucy 3047
M A R Lucy 9400

G A R Big Step K715
Basin Lucy 4261
EXAR Monumental 6056B
Basin Joy 5367
V A R Index 3282
Riverbend Lady B066
Marda Blacksmith 683
M A R Lucy 1623

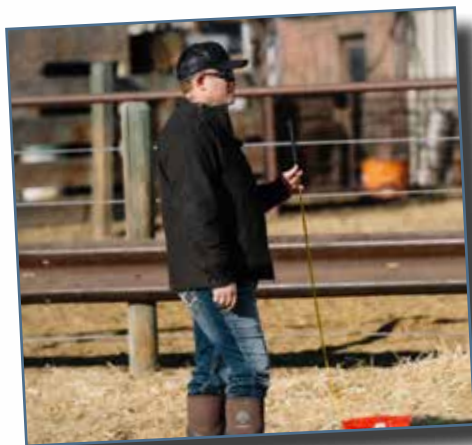
Act Birth Wt
78
Adj WW
676

CED	BW	WW	YW	SC	DOC	CLAW	ANGLE	HS
+12	-0.5	+68	+128	+99	+23	+47	+43	+47
HP	MILK	CWT	MARB	REA	\$M	\$W	\$B	\$C
+11.8	+39	+59	+91	+1.27	+72	+84	+178	+303

CED	BW	WW	YW	DMI	YH	SC	Doc	Claw	Angle	PAP	HS	HP	CEM	Milk	MW	MH	CW	Marb	REA	Fat	Tend
3	7	55	30	64	78	35	21	44	20	20	26	20	11	8	67	83	22	37	1	30	20

Ranks in the top 2% for Milk; top 3% for CEM; top 4% for RE; top 10% for CED; top 15% for PAP and \$W; top 20% for BW and \$G; top 25% for Fat, \$B and \$C.

Here is a very special moderate soft made calving ease bull with a negative BW to go along with a top 5% ribeye, a very hard combination to achieve. 5005 has a double digit CED with a negative BW, excellent YW, very good scrotal and HP combination, top 3% CEM, top 2% milk, very controlled mature height, excellent docility, outstanding foot scores, negative PAP with an outstanding set of Dollar values.



Reference Sire



Basin Keystone 2021

KK RKR Authority 5050

12

Birth Date: 02/27/2025 Bull: *21224612 Freeze Brand: 5050

Ingram Heisman 0566
DBA Authority 3122
Hart Whitney 1442



V A R Signal 7244
XLAR Queenie 7595 1034
Spruce Mtn Queenie 7595

Connealy Confidence Plus
RB Lady Denver 167-453
Brooks Bowman
Hart Whitney 9518
Basin Payweight 1682
PF CC&7 Henrietta Pride 1044
Baldridge Bronc
Dean's Queenie X104

Act Birth Wt
74
Adj WW
702

CED	BW	WW	YW	SC	DOC	CLAW	ANGLE	HS
+16	-2.1	+67	+125	+2.13	+19	+50	+41	+51
HP	MILK	CWT	MARB	REA	\$M	\$W	\$B	\$C
+11.1	+26	+78	+64	+1.01	+76	+71	+198	+333

CED	BW	WW	YW	DMI	YH	SC	Doc	Claw	Angle	PAP	HS	HP	CEM	Milk	MW	MH	CW	Marb	REA	Fat	Tend
10	20	35	13	91	41	2	39	74	67	81	60	31	5	68	43	52	2	33	10	69	55

Ranks in the top 2% for CED, SC and \$F; top 3% for CEM; top 4% for BW; top 10% for CW and \$C; top 15% for Teat, UDDR and \$B; top 20% for RADG, Angle and RE.

This incredible young sire is sired by the high selling bull at the 2024 National Angus Bull Sale in OKC. He is a double digit calving ease bull with shape and functionality, he has the honor of being out of the great Queenie cow family which is well known for maternal abilities. 5050 has the top CED and birthweight combination in the entire offering, outstanding YW, top 2% scrotal, top 3% CEM, very controlled mature height and mature weight, excellent foot scores, top 10% CW along with outstanding dollar values.





RKR Pacifico 5024

13

Birth Date: 01/29/2025

Bull: *21206166

Freeze Brand: 5024

Sterling Pacific 904
M A R Pacifico 260
M A R Miss Amy 9012
M A R Alternative 052
M A R Rita 2010
M A R Rita 0051

Hoover No Doubt
Baldridge Isabel B082
Baldridge Alternative E125
M A R Miss Amy 1743
Baldridge Alternative E125
M A R Lucy 1352
M A R Mr Aberdeen 806
M A R Rita 1619

Act Birth Wt
86
Adj WW
610

CED	BW	WW	YW	SC	DOC	CLAW	ANGLE	HS
+8	+0.8	+50	+92	+21	+41	+46	+44	
HP	MILK	CWT	MARB	REA	\$M	\$W	\$B	\$C
+12.2	+12	+37	+1.13	+75	+56	+26	+167	+273

CED	BW	WW	YW	DMI	YH	SC	Doc	Claw	Angle	PAP	HS	HP	CEM	Milk	MW	MH	CW	Marb	REA	Fat	Tend
32	18	89	80	29	93	57	23	28	49	47	37	32	30	100	74	84	80	19	35	16	69

Ranks in the top 5% for Teat; top 15% for UDDR and \$G; top 20% for \$EN, Marb and Fat; top 25% for DMI and Claw.

Check out this extremely stylish calving ease bull, his shape and power are second to none. 5024 has very good CED with an excellent BW, very good scrotal and HP combination, excellent CEM, very good teat and udder scores, very controlled mature height and mature weight, outstanding foot scores with balanced dollar values.



Lot 13

Reference Sire



M A R Pacifico 260



RKR Pacifico 5034

14

Birth Date: 02/13/2025

Bull: *21224610

Freeze Brand: 5034

Sterling Pacific 904
M A R Pacifico 260
M A R Miss Amy 9012
G A R Transcendent
M A R Erica Rito 2007
M A R Erica Rito 0037

Hoover No Doubt
Baldridge Isabel B082
Baldridge Alternative E125
M A R Miss Amy 1743
G A R Momentum
G A R Prophet 2685
Baldridge Alternative E125
MAR Erica Rito 1401

Act Birth Wt
94
Adj WW
779

CED	BW	WW	YW	SC	DOC	CLAW	ANGLE	HS
+7	+2.3	+74	+125	+79	+19	+43	+43	+11
HP	MILK	CWT	MARB	REA	\$M	\$W	\$B	\$C
+7.7	+24	+61	+1.53	+75	+73	+74	+205	+339

CED	BW	WW	YW	DMI	YH	SC	Doc	Claw	Angle	PAP	HS	HP	CEM	Milk	MW	MH	CW	Marb	REA	Fat	Tend
48	57	70	60	45	93	25	51	21	38	6	2	93	54	69	89	84	42	6	16	24	35

Ranks in the top 5% for HS, Marb and \$G; top 10% for \$B and \$C; top 15% for PAP; top 20% for \$EN.

I really like the look of this moderate framed bull with a lot of Angus character, great foot scores and top 5% of the breed for marbling - who says you really can't have it all. 5034 has very good YW, excellent CEM, nice teat and udder scores, very controlled mature height and mature weight, very good foot scores, negative PAP, top 5% MARB with great dollar values.



Lot 15



RKR Pacifico 5067

15

Birth Date: 03/20/2025

Bull: *21246886

Freeze Brand: 5067

Sterling Pacific 904
M A R Pacifico 260
M A R Miss Amy 9012
SITZ Incentive 704H
Hart Whitney 3205
Hart Whitney 1064

Hoover No Doubt
Baldridge Isabel B082
Baldridge Alternative E125
M A R Miss Amy 1743
Sitz Stellar 726D
SITZ Barbaramere Nell 53F
Musgrave 316 Exclusive
Hart Whitney 3206

Act Birth Wt
84
Adj WW
863

CED	BW	WW	YW	SC	DOC	CLAW	ANGLE	HS
+5	+2.4	+80	+130	+57	+19	+41	+57	+69
HP	MILK	CWT	MARB	REA	\$M	\$W	\$B	\$C
+12.2	+16	+65	+1.13	+88	+73	+69	+190	+319

CED	BW	WW	YW	DMI	YH	SC	Doc	Claw	Angle	PAP	HS	HP	CEM	Milk	MW	MH	CW	Marb	REA	Fat	Tend
67	52	37	61	50	90	62	78	25	93	22	79	23	46	97	68	90	53	12	40	75	37

Ranks in the top 15% for \$C; top 20% for WW, Marb, \$G and \$B; top 25% for Claw, UDDR and \$F.

Here is a young sire that will really work in Montana, he is a moderate thick made bull, out of one of the highly sought after cow families, Hart Whitney. A late March calf that will really mature into a great herd bull. 5067 has very good growth, excellent scrotal and HP combination, very good CEM, teat and udder scores, excellent claw, good PAP, top 20% MARB with big-time dollar values.



RKR Full Service 5025

16

Birth Date: 02/01/2025

Bull: 21319431

Freeze Brand: 5025

SITZ Full Service
FF Full Service L11
FF Shoshone JF D113



RKP Latigo 040
FF Fantasy L69
FF Fantasy D145

Sitz Accomplishment 720F
SITZ Henrietta Pride 198D
KR DINERO
JF Shoshone W42
Vermilion Spur E143
Vermilion Lass 0213
Plattmeyer Weigh Up K360
FF Fantasy Y142

Act Birth Wt
73
Adj WW
839

CED	BW	WW	YW	SC	DOC	CLAW	ANGLE	HS
+7	+0.3	+95	+163	+1.03	+20	+47	+35	+75
HP	MILK	CWT	MARB	REA	\$M	\$W	\$B	\$C
+11.6	+14	+81	+65	+1.04	+58	+78	+188	+302

CED	BW	WW	YW	DMI	YH	SC	Doc	Claw	Angle	PAP	HS	HP	CEM	Mik	MW	MH	CW	Marb	REA	Fat	Tend
70	60	2	4	84	31	17	44	24	6	28	76	53	17	95	4	7	1	60	11	23	99

Ranks in the top 2% for MH; top 3% for WW, UDDR and MH; top 4% for YW and \$B; top 5% for Angle and CEM; top 10% for RADG, Teat, CW, Fat and \$F; top 15% for YH and RE; top 20% for \$B; top 25% for \$C.

Another very special calving ease sire that has an incredible powerful build to go along with a great maternal heritage. 5025 has tremendous BW with outstanding top 4% growth, excellent HP and scrotal combination, top 5% CEM, outstanding teat and udder scores, balanced docility, excellent top 5% angle, very good PAP to go along with balanced dollar values.

RKR Full Service 5027

17

Birth Date: 02/04/2025

Bull: 21319432

Freeze Brand: 5027

SITZ Full Service
FF Full Service L11
FF Shoshone JF D113



RKP Laramie 133
FF Erica L115
FF Erica J49

Sitz Accomplishment 720F
SITZ Henrietta Pride 198D
KR DINERO
JF Shoshone W42
Poss Rawhide
Vermilion Lass 0213
FF Conclusion F83
FF Erica A237

Act Birth Wt
74
Adj WW
732

CED	BW	WW	YW	SC	DOC	CLAW	ANGLE	HS
+11	-0.7	+57	+113	+34	+5	+55	+50	+76
HP	MILK	CWT	MARB	REA	\$M	\$W	\$B	\$C
+8.8	+8	+66	+77	+83	+7	+22	+198	+264

CED	BW	WW	YW	DMI	YH	SC	Doc	Claw	Angle	PAP	HS	HP	CEM	Mik	MW	MH	CW	Marb	REA	Fat	Tend
22	30	88	15	20	69	61	84	66	71	21	92	87	36	100	37	41	23	14	51	53	35

Ranks in the top 2% for UDDR; top 3% for \$F; top 10% for RADG, Teat; top 15% for CED, BW, CEM, MH and \$B; top 20% for DMI, PAP and MW.

Here's another chance to buy a good young sire that is moderate framed, super deep, with a big-time future. 5027 has an outstanding outcross pedigree to most of the modern genetic make up's. 5027 has a double digit CED with a negative BW, excellent CEM, tremendous teat and udder scores, controlled mature height, negative PAP, top 25% CW with very good dollar values.



RKR Full Service 5039

18

Birth Date: 02/17/2025

Bull: *21367234

Freeze Brand: 5039

SITZ Full Service
FF Full Service L11
FF Shoshone JF D113



FF Conclusion H64
FF Entense L65
Willekes Entense F48

Sitz Accomplishment 720F
SITZ Henrietta Pride 198D
KR DINERO
JF Shoshone W42
FF Conclusion F83
FF Henrietta Pride C3
HA Cowboy Up 5405
Pine Coulee Entense T515

Act Birth Wt
67
Adj WW
695

CED	BW	WW	YW	SC	DOC	CLAW	ANGLE	HS
+10	-1.3	+65	+114	+1.94	+25	+44	+47	+81
HP	MILK	CWT	MARB	REA	\$M	\$W	\$B	\$C
+12.4	+23	+52	+52	+43	+72	+63	+139	+252

CED	BW	WW	YW	DMI	YH	SC	Doc	Claw	Angle	PAP	HS	HP	CEM	Mik	MW	MH	CW	Marb	REA	Fat	Tend
19	3	61	51	69	55	2	16	32	51	51	94	24	28	49	40	33	29	39	80	65	21

Ranks in the top 4% for SC; top 10% for BW; top 15% for CEM; top 20% for CED and Teat; top 25% for DOC and UDDR.

Here is another high-end heifer bull candidate with a double digit CED and a whole lot of shape. 5039 as a double digit CED with a negative BW, excellent growth, very good scrotal an HP combination, tremendous CEM, controlled mature height and mature weight, top 25% docility, excellent foot scores with big-time dollar values.

RKR Clarified 5065

19

Birth Date: 03/16/2025 Bull: *21246885 Freeze Brand: 5065

Connealy Clarity
MAR / CA Clarified 1326
M A R Protege 9226



Marda Blacksmith 683
M A R Lucy 9400
M A R Lucy 1623

Cherry Creek Land Grant
Breshie of Conanga 6988
FF Rito Righteous 6R41
G A R Protege M532
Connealy Black Granite
S A V Blackcap May 3092
SydGen FATE 2800
SJH Lucy 9682

Act Birth Wt
88
Adj WW
692

CED	BW	WW	YW	SC	DOC	CLAW	ANGLE	HS
+11	+1.4	+75	+131	+98	+27	+46	+42	+27
HP	MILK	CWT	MARB	REA	\$M	\$W	\$B	\$C
+13.5	+21	+69	+87	+1.42	+73	+67	+198	+330

CED	BW	WW	YW	DMI	YH	SC	Doc	Claw	Angle	PAP	HS	HP	CEM	Milk	MW	MH	CW	Marb	REA	Fat	Tend
26	56	44	50	28	70	42	23	29	15	81	16	4	37	91	45	48	31	42	3	22	78

Ranks in the top 2% for RE; top 10% for Fat and \$F; top 15% for CED, DOC, CEM, \$B and \$C; top 20% for HS, CW and \$G; top 25% for Angle and HP.

Another outstanding heifer prospect that has double digit CED and goes back to Black Granite and Sydgen Fate, a couple of great female making bulls in the industry. 5065 has a double digit CED with a very good growth figures, very good scrotal and HP combination, excellent CEM, controlled mature height and mature weight, top 15% docility, excellent foot scores, top 20% CW with balanced dollar values.



Lot 19

RKR Clarified 5072

20

Birth Date: 04/13/2025 Bull: *21282647 Freeze Brand: 5072

Connealy Clarity
MAR / CA Clarified 1326
M A R Protege 9226



G A R Transcendent
M A R Miss Amy 2013
M A R Miss Amy 0074

Cherry Creek Land Grant
Breshie of Conanga 6988
FF Rito Righteous 6R41
G A R Protege M532
G A R Momentum
G A R Prophet 2685
Casino Bomber N33
M A R Miss Amy 1349

Act Birth Wt
75
Adj WW
844

CED	BW	WW	YW	SC	DOC	CLAW	ANGLE	HS
+10	+1.6	+89	+151	+82	+28	+38	+39	+51
HP	MILK	CWT	MARB	REA	\$M	\$W	\$B	\$C
+9.5	+27	+79	+1.67	+1.14	+63	+91	+235	+368

CED	BW	WW	YW	DMI	YH	SC	Doc	Claw	Angle	PAP	HS	HP	CEM	Milk	MW	MH	CW	Marb	REA	Fat	Tend
37	54	16	23	58	97	55	10	10	23	63	49	48	55	62	29	81	18	3	2	87	91

Ranks in the top 3% for Marb, \$G, \$B and \$C; top 5% for \$F; top 10% for WW, YW, CW, RE and \$W; top 15% for DOC, Claw and Angle; top 20% for CED and MW; top 25% for RADG.

Now here's something ultra cool, moderate thick tank, that is still a calving ease bull with excellent foot scores and top 15% for docility. 5072 has a double digit CED with top 10% YW, top 30% CEM, controlled mature height and mature weight, 15% docility, excellent foot scores, top 3% marbling with tremendous dollar values.



Lot 20

RKR Mamba 5037

21

Birth Date: 02/16/2025 Bull: *21246887 Freeze Brand: 5037

Connealy Clarity
M A R Mamba 257
MAR Erica Rito 1401



WAR Cavalry B063 Z044
Spruce Mtn Rita 1590
TEX Rita 5446

Cherry Creek Land Grant
Breshie of Conanga 6988
A A R Ten X 7008 S A
Highwood Erica Rito 209
Connealy Cavalry 1149
War CC&7 Z044 X029
Basin Payweight 1682
Rita 1C43 of 9M26 Complete

Act Birth Wt
98
Adj WW
746

CED	BW	WW	YW	SC	DOC	CLAW	ANGLE	HS
+1	+2.1	+88	+163	+71	+25	+44	+39	+49
HP	MILK	CWT	MARB	REA	\$M	\$W	\$B	\$C
+12.7	+34	+92	+1.46	+81	+79	+95	+244	+395

CED	BW	WW	YW	DMI	YH	SC	Doc	Claw	Angle	PAP	HS	HP	CEM	Milk	MW	MH	CW	Marb	REA	Fat	Tend
75	62	19	5	85	84	53	20	40	40	49	37	14	56	19	59	77	2	3	16	24	72

Ranks in the top 1% for \$F and \$C; top 2% for CW and \$B; top 3% for RADG; top 4% for YW and \$W; top 10% for WW, Milk, Marb and \$G; top 15% for Angle; top 25% for DOC, Fat and \$M.

Now here's something ultra cool, a very slick made bull with a lot of upside, sired by the high selling bull of the 2024 Male Angus Ranch bull sale, out of an exceptional cow purchased from Double Barrel Angus, this one has 14 EPD's in the top 15% of the breed. 5037 has outstanding YW, very good scrotal and HP combination, top 10% milk, controlled mature height and mature weight, excellent docility, very good foot scores, top 2% CW, top 10% MARB with big-time dollar values.

Reference Sire



FF Full Service L11

RKR

RKR Full Service 5029

22

Birth Date: 02/06/2025

Bull: 21319433

Freeze Brand: 5029

SITZ Full Service
FF Full Service L11
FF Shoshone JF D113



FF Ez Money H39
FF Esia Evergreen L127
FF Esia Evergreen H154

Sitz Accomplishment 720F
SITZ Henrietta Pride 198D
KR DINERO
JF Shoshone W42
FF EZ Money D217
FF Princess F51
Vermilion Trigger D150
FF Esia Evergreen Y100

Act Birth Wt
88
Adj WW
749

CED	BW	WW	YW	SC	DOC	CLAW	ANGLE	HS
+4	+2.9	+76	+137	+1.79	+11	+41	+38	+79
HP	MILK	CWT	MARB	REA	\$M	\$W	\$B	\$C
+8.8	+29	+73	+64	+84	+65	+72	+169	+284

CED	BW	WW	YW	DMI	YH	SC	Doc	Claw	Angle	PAP	HS	HP	CEM	Milk	MW	MH	CW	Marb	REA	Fat	Tend
87	95	8	5	93	11	3	80	28	15	93	95	85	19	21	14	12	2	34	33	81	81

Ranks in the top 10% for SC; top 15% for Angle, CEM, CW and \$F; top 25% for YW, YH and Claw.

Here's something you really like to find, a power bull with excellent structure, backed by a real maternal cow family. 5029 has excellent YW, top 10% scrotal, excellent CEM, very good milk, controlled mature height, excellent functional longevity, very good foot scores, top 15% CW with outstanding dollar values.

RKR

RKR Full Service 5043

23

Birth Date: 02/19/2025

Bull: *21367233

Freeze Brand: 5043

SITZ Full Service
FF Full Service L11
FF Shoshone JF D113



Will Conclusion J30
FF Primrose L60
Willekes Primrose J93

Sitz Accomplishment 720F
SITZ Henrietta Pride 198D
KR DINERO
JF Shoshone W42
FF Conclusion F83
Willekes Bonny E02
FF Statement G41
Willekes Primrose E18

Act Birth Wt
90
Adj WW
656

CED	BW	WW	YW	SC	DOC	CLAW	ANGLE	HS
+2	+2.2	+59	+114	+1.61	+8	+41	+35	+52
HP	MILK	CWT	MARB	REA	\$M	\$W	\$B	\$C
+12.1	+25	+46	+92	+38	+63	+49	+154	+263

CED	BW	WW	YW	DMI	YH	SC	Doc	Claw	Angle	PAP	HS	HP	CEM	Milk	MW	MH	CW	Marb	REA	Fat	Tend
72	51	38	16	81	22	8	86	15	3	1	50	24	5	31	21	10	12	27	78	86	50

Ranks in the top 1% for PAP; top 5% for Angle; top 15% for SC; top 25% for Claw and CEM.

Another very impressive young sire that excels for PAP with outstanding foot scores. This is another young sire with a big-time out cross pedigree. 5043 has a balanced BW to YW combination, top of the day scrotal and HP combination, excellent CEM, controlled mature height and mature weight, very good foot scores, top 1% PAP, with very balanced dollar values.



Lot 23

RKR

RKR Wildcat 5009

24

Birth Date: 01/05/2025

Bull: *21209508

Freeze Brand: 5009

E & B Wildcat 9402
DBA Wildcat 3126
DBA Lady Jaye 1113



Riverbend Index E316
M A R Erica 2098
M A R Erica 9504

GAR Discovery 6737H
E&B Lady Plus 643
G A R Home Town
PV Lady Jaye 71104
V A R Index 3282
Riverbend Lady B066
Poss Maverick
M A R Erica 1806

Act Birth Wt
85
Adj WW
704

CED	BW	WW	YW	SC	DOC	CLAW	ANGLE	HS
+10	+2.0	+73	+134	+26	+20	+50	+46	+41
HP	MILK	CWT	MARB	REA	\$M	\$W	\$B	\$C
+6.7	+32	+61	+95	+75	+61	+77	+175	+288

CED	BW	WW	YW	DMI	YH	SC	Doc	Claw	Angle	PAP	HS	HP	CEM	Milk	MW	MH	CW	Marb	REA	Fat	Tend
44	67	58	39	27	83	96	34	64	44	76	31	98	44	42	84	69	35	48	48	32	65

Ranks in the top 4% for UDDR; top 15% for Milk; top 25% for CED, RADG, \$W and \$G.

Very interesting pedigree having Wildcat at the top, with Maverick on the bottom side, this one is tailor-made for performance cattle. 5009 has a double digit CED with a top YW, excellent milk, tremendous CEM, very good milk, controlled mature height and mature weight, balanced foot scores, top 30% MARB with balanced dollar values.



Lot 24

Elite Donor Cow - A Foundation to Build On



C5 Ms Ratified 341-2K60 as a calf

Reference Dam



4 Sons Blackbird 2K60
Donor Dam of Lot 25

JK C5 Ms Ratified 341-2K60

25

Birth Date: 11/23/2023 Cow: +*20801233 Freeze Brand: 341

Poss Rawhide
Poss Ratified

Poss Rita 5116



GB Fireball 672

4 Sons Blackbird 2K60

Deer Valley Blackbird 8768

Poss Maverick
Poss Blueblood 6502
Connealy Uptown 098E
Rita 12D8 of 5F56 Rito 5M2
G A R Sure Fire 6404
GB Anticipation 432
TEX Playbook 5437
Deer Valley Blackbird 4765



CED	BW	WW	YW	SC	DOC	CLAW	ANGLE	HS
+9	+1.6	+94	+168	+1.09	+32	+58	+53	+33
HP	MILK	CWT	MARB	REA	\$M	\$W	\$B	\$C
+14.0	+41	+96	+1.72	+1.12	+86	+110	+253	+414

CED	BW	WW	YW	DMI	YH	SC	Doc	Claw	Angle	PAP	HS	HP	CEM	Milk	MW	MH	CW	Marb	REA	Fat	Tend
31	43	10	7	86	40	61	2	90	92	51	20	10	54	1	41	57	1	2	3	89	99

Ranks in the top 1% for Milk, CW, \$@ and \$C; top 2% \$F and \$B; top 3% YW; top 4% WW, DOC, Marb and \$G; top 10% YH and \$M; top 15% HP, CEM and RE; top 20% RADG; top 25% MW, MH and HS.

The excitement that a young female like this brings to any herd is the kind of stuff that keeps us all going year after year after year. The dam 2K60 has produced more high sellers for the great 4 Sons Ranch of Kentucky than any other female in their history. The grandam 8768 has gone on and produced well over \$1 million in progeny with no end in sight, she is widely considered the greatest daughter of GB Fireball, one of the greatest carcass sires ever identified. 341 has a double digit CED with a top 3% YW, tremendous scrotal and HP combination, outstanding CEM, top 1% milk, excellent functional longevity, controlled mature height and mature weight, top 3% docility, top 1% CW, top 3% marbling with breed leading dollar values.

Reference Dam



Deer Valley Blackbird 8768
\$400,000 valued grandam of Lot 25

JK C5 Ms Honey 426

26

Birth Date: 11/03/2024 Cow: +*21085852 Freeze Brand: 426

SEO Ultra Provider
FF Rito Ambitious
RMRK Rita 0237



SG Salvation

C5 Ms salvation 266-231

C5 Ms Hometown 231-2118 C5 MS Acclaim D - 2118

G A R Momentum K836
Chair Rock Progress 3023
Thomas Edison 6764
RMRK Rita 8232
Baldrige Alternative E125
MGR JP Rita 7037
G A R Home Town
C5 MS Acclaim D - 2118



CED	BW	WW	YW	SC	DOC	CLAW	ANGLE	HS
+10	+0.6	+80	+136	+79	+29	+45	+37	+42
HP	MILK	CWT	MARB	REA	\$M	\$W	\$B	\$C
+11.9	+25	+71	+1.66	+88	+93	+85	+231	+393

CED	BW	WW	YW	DMI	YH	SC	Doc	Claw	Angle	PAP	HS	HP	CEM	Milk	MW	MH	CW	Marb	REA	Fat	Tend
48	48	31	27	47	64	19	5	48	24	21	37	22	27	54	52	54	11	2	57	56	34

Ranks in the top 2% for \$C; top 4% for \$G and \$B; top 5% for Marb; top 10% for DOC, Angle, \$M and \$F; top 15% for CEM and \$W; top 20% for CED, WW, DMI and CW; top 25% for YW and RADG.



Now here's something extremely special! A highlight that if you're looking to tie into one of the newest and brightest branches of the Salvation family, that is tied together by the elite Ambitious and the Salvation family tracing all the way back to Hometown, this one is for you. 426 has a double digit CED with a top 20% YW, very good HP, top 15% CEM, very controlled mature height and mature weight, top 10% docility, outstanding foot scores, negative PAP, top 5% marbling with monstrous dollar values.



RKR Lady 5057

27

Birth Date: 03/05/2025

Cow: +*21251557

Freeze Brand: 5057

HPCA Veracious
44 Faithful 2764
DCF Ruby of Tiffany 6799



S S Niagara Z29
Stone Creek Lady 453-1101
RB Lady Denver 167-453

Mill Brae Identified 4031
H P C A Sunrise A246
V A R Generation 2100
DCF Ruby of Tiffany 7592
Hoover Dam
Jet S S X144
EXAR Denver 2002B
R B Lady Party 167-305



CED	BW	WW	YW	SC	DOC	CLAW	ANGLE	HS
-1	+3.7	+87	+160	+1.19	+20	+3.8	+4.1	+5.5
HP	MILK	CWT	MARB	REA	SM	\$W	\$B	\$C
+10.2	+30	+90	+1.54	+1.17	+56	+80	+243	+371

CED	BW	WW	YW	DMI	YH	SC	Doc	Claw	Angle	PAP	HS	HP	CEM	Milk	MW	MH	CW	Marb	REA	Fat	Tend
92	95	2	1	98	29	88	30	8	13	93	55	86	64	19	6	9	1	4	12	68	93

Ranks in the top 2% for \$F and \$B; top 3% for CW; top 4% for \$C; top 5% for YW and RADG; top 10% for WW, Marb, RE and \$G; top 15% for Claw and MH; top 20% for Angle, MW and \$W; top 25% for Milk.

Here is an outstanding chance to buy a game changing female for the Angus breed, that happens to be from the greatest producing cow of the Lady cow family, the mighty 453. The dam of this female was the \$150,000 valued high seller for a past Stone Creek production sale. A full sister to this female recently sold to Select Sires at the 2026 Cattleman's Congress in Oklahoma City. 5057 has top 5% YW, excellent milk, controlled mature height and mature weight, very good docility, top 10% claw, top 25% angle, top 3% CW, top 10% MARB and top 10% RE to go along with breed leading dollar values.



C5 Ms Hustler 431-4425

28

Birth Date: 12/31/2024

Cow: +*21177542

Freeze Brand: 431

SEO Ultra Provider
FF Rito Hustler 1B69
RMRK Rita 0237



Connealy Clarity
AH/B I G Clarity 0184 4425
B&B Rita 0184

G A R Momentum K836
Chair Rock Progress 3023
Thomas Edison 6764
RMRK Rita 8232
Cherry Creek Land Grant
Breshie of Conanga 6988
E W A Peyton 642
H P C A Surefire P457



CED	BW	WW	YW	SC	DOC	CLAW	ANGLE	HS
+6	+4.5	+85	+156	+7.1	+27	+4.3	+4.5	+0.3
HP	MILK	CWT	MARB	REA	SM	\$W	\$B	\$C
+11.1	+29	+85	+1.60	+1.49	+65	+76	+246	+384

CED	BW	WW	YW	DMI	YH	SC	Doc	Claw	Angle	PAP	HS	HP	CEM	Milk	MW	MH	CW	Marb	REA	Fat	Tend
59	89	29	5	94	34	23	29	32	47	72	3	29	91	29	31	46	17	2	2	6	82

Ranks in the top 2% for RE, \$G, \$B and \$C; top 3% for HS; top 5% for CW and \$F; top 10% for YW, RADG, YH, Marb and Fat; top 15% for WW and DOC; top 25% for \$W.

Check out this super-complete, very balanced Hustler daughter that stems from the great Rita cow family. The Rita cow family has been one of the most phenotype and genotype famous families in the industry for the past 10 years, they have the kind of progeny that sell well every single day. 431 has a top 10% YW and a top 10% WW, very good HP, excellent milk, controlled mature height and mature weight, outstanding docility, very good foot scores, top 4% CW with top 4% marbling to go along with an incredible top 1% ribeye and balanced dollar values.





C5 Ms Ability 423

29

Birth Date: 10/29/2024 Cow: +*21083198 Freeze Brand: 423

SEO Ultra Provider
FF Rito Ambitious
RMRK Rita 0237



Williams HT Promogen 700-280
C5 Ms Promogen 272 -136
C5 Ms Cavalry 136 - 2118

G A R Momentum K836
Chair Rock Progress 3023
Thomas Edison 6764
RMRK Rita 8232
G A R Home Town
Powell Erica 7312
WAR Cavalry B063 Z044
C5 MS Acclaim D - 2118



CED	BW	WW	YW	SC	DOC	CLAW	ANGLE	HS
+7	+2.0	+89	+151	+39	+28	+52	+44	+04
HP	MILK	CWT	MARB	REA	\$M	\$W	\$B	\$C
+11.2	+25	+77	+1.83	+90	+96	+91	+236	+402

CED	BW	WW	YW	DMI	YH	SC	Doc	Claw	Angle	PAP	HS	HP	CEM	Milk	MW	MH	CW	Marb	REA	Fat	Tend
43	41	32	42	72	70	71	8	43	46	30	4	45	16	53	80	73	21	1	38	70	82

Ranks in the top 1% for \$C; top 2% for Marb and \$G; top 3% for HS and \$B; top 4% for \$M; top 10% for WW, YW and \$W; top 15% for DOC, CEM, UDDR, CW and \$F; top 25% for Teat.

This special sale highlight has the honor of being the number two \$C female being offered in this event, Ambitious has recently sired the \$660,000 Avid, a bull who has gone on and broke all records for semen sales, with it selling for over \$20,000 a unit. 423 has a tremendous birth to growth spread, very good HP, excellent CEM, very good teat and udder scores, tremendous functional longevity, controlled mature height and mature weight, very good docility, top 2% marbling with big-time dollar values.



Lot 29



C5 Ms Ambition 424

30

Birth Date: 10/31/2024 Cow: +*21083199 Freeze Brand: 424

SEO Ultra Provider
FF Rito Ambitious
RMRK Rita 0237



Williams HT Promogen 700-280
C5 Ms Promogen 272 -136
C5 Ms Cavalry 136 - 2118

G A R Momentum K836
Chair Rock Progress 3023
Thomas Edison 6764
RMRK Rita 8232
G A R Home Town
Powell Erica 7312
WAR Cavalry B063 Z044
C5 MS Acclaim D - 2118



CED	BW	WW	YW	SC	DOC	CLAW	ANGLE	HS													
+4	+3.0	+86	+146	+1.02	+21	+42	+36	+29													
HP	MILK	CWT	MARB	REA	\$M	\$W	\$B	\$C													
+13.2	+11	+74	+1.67	+73	+88	+63	+232	+389													
CED	BW	WW	YW	DMI	YH	SC	Doc	Claw	Angle	PAP	HS	HP	CEM	Milk	MW	MH	CW	Marb	REA	Fat	Tend
90	94	21	30	68	53	20	32	16	7	14	17	5	12	100	64	69	12	1	69	90	85

Ranks in the top 1% for UDDR; top 2% for \$C; top 4% for Marb and \$B; top 5% for Teat and \$G; top 10% for WW, Angle, \$M and \$F; top 15% for YW; top 20% for HS, FL and CW; top 25% for RADG, Claw, PAP and HP.

Here's the last of the flush sisters by Ambitious back to the great Promogen, It will be your turn to subjectively pick which one fits your program the best, they all excel in totally different ways. 424 has top 15% YW, excellent scrotal and HP combination, very good CEM, top 1% udder score, very good functional longevity, controlled mature height and mature weight, very good foot scores, negative PAP, top 3% marbling with outstanding dollar values.



Lot 31



C5 Ms Ambitious 418-284

31

Birth Date: 10/06/2024 Cow: +*21058988 Freeze Brand: 418

SEO Ultra Provider
FF Rito Ambitious
RMRK Rita 0237



Williams HT Promogen 700-280
C5 Ms Promogen 284-2118
C5 MS Acclaim D - 2118

G A R Momentum K836
Chair Rock Progress 3023
Thomas Edison 6764
RMRK Rita 8232
G A R Home Town
Powell Erica 7312
Jindra Acclaim
C5 MS Queenie 802



CED	BW	WW	YW	SC	DOC	CLAW	ANGLE	HS
+8	+2.6	+91	+159	+85	+26	+44	+40	+80
HP	MILK	CWT	MARB	REA	\$M	\$W	\$B	\$C
+8.8	+25	+83	+1.57	+57	+65	+82	+232	+366

CED	BW	WW	YW	DMI	YH	SC	Doc	Claw	Angle	PAP	HS	HP	CEM	Milk	MW	MH	CW	Marb	REA	Fat	Tend
71	86	4	7	83	47	10	8	48	38	55	93	53	9	74	9	14	4	2	90	94	91

Ranks in the top 3% for \$F; top 4% for \$B; top 5% for WW, YW and \$C; top 10% for RADG, MW, MH, CW, Marb and \$G; top 15% for CEM; top 20% for DOC, Angle, FL and \$W.

Here's an absolutely gorgeous Ambitious daughter back to one of the best donors in the herd. Make sure you look at all the Ambitious females in the offering, you will not be disappointed. 418 has breed greats like Ambitious, Hometown, and a great Queenie cow family all in one pedigree. 418 has top 5% growth, top 15% CM, very good milk, excellent teat and udder scores, top 25% functional longevity, top 20% docility, excellent foot scores, top 10% MARB with top 10% CW to go along with stellar dollar values.



JK C5 Ms Ambitious 415-272

32

Birth Date: 10/04/2024

Cow: +*21058985

Freeze Brand: 415

SEO Ultra Provider
FF Rito Ambitious
RMRK Rita 0237



Williams HT Promogen 700-280
C5 Ms Promogen 272 -136
C5 Ms Cavalry 136 - 2118

G A R Momentum K836
Chair Rock Progress 3023
Thomas Edison 6764
RMRK Rita 8232
G A R Home Town
Powell Erica 7312
WAR Cavalry B063 Z044
C5 MS Acclaim D - 2118



CED	BW	WW	YW	SC	DOC	CLAW	ANGLE	HS
+4	+3.4	+90	+158	+1.01	+29	+57	+49	+49
HP	MILK	CWT	MARB	REA	\$M	\$W	\$B	\$C
+11.7	+26	+81	+1.64	+82	+82	+85	+230	+380

CED	BW	WW	YW	DMI	YH	SC	Doc	Claw	Angle	PAP	HS	HP	CEM	Milk	MW	MH	CW	Marb	REA	Fat	Tend
69	78	25	13	92	64	23	11	78	61	12	65	37	6	59	56	63	12	3	32	37	84

Ranks in the top 3% for SC; top 4% for SG; top 5% for Marb and \$B; top 10% for WW, YW, DOC, CW and \$F; top 15% for Teat, UDDR and \$W; top 20% for PAP and \$M; top 25% for CEM.

If you're looking for something new that has loads of earning potential, and if you want something fresh that will work on any program across the country, look no further than this outstanding Ambitious daughter by the great Promogen. 415 has top 5% YW, very good scrotal and HP combination, excellent CEM, tremendous teat and udder scores, very controlled mature height and mature weight, very good docility, negative PAP, top 3% MARB with outstanding dollar values.

JK C5 Ms Ambition 422

33

Birth Date: 10/28/2024

Cow: +*21083197

Freeze Brand: 422

SEO Ultra Provider
FF Rito Ambitious
RMRK Rita 0237



Williams HT Promogen 700-280
C5 Ms Promogen 272 -136

C5 Ms Cavalry 136 - 2118

G A R Momentum K836
Chair Rock Progress 3023
Thomas Edison 6764
RMRK Rita 8232
G A R Home Town
Powell Erica 7312
WAR Cavalry B063 Z044
C5 MS Acclaim D - 2118



CED	BW	WW	YW	SC	DOC	CLAW	ANGLE	HS
+6	+3.3	+99	+162	+61	+21	+52	+50	+09
HP	MILK	CWT	MARB	REA	\$M	\$W	\$B	\$C
+13.3	+21	+78	+1.58	+1.18	+86	+91	+235	+391

CED	BW	WW	YW	DMI	YH	SC	Doc	Claw	Angle	PAP	HS	HP	CEM	Milk	MW	MH	CW	Marb	REA	Fat	Tend
85	89	3	25	78	56	41	34	44	69	40	4	5	3	82	21	53	4	2	6	17	88

Ranks in the top 2% for WW and SC; top 3% for SG; top 4% for YW and \$B; top 5% for HS; top 10% for UDDR, Marb, RE, \$W and \$F; top 15% for CEM, Teat, CW, Fat and \$M; top 20% for RADG and MW; top 25% for HP.

Ambitious daughters will be some of the most highly sought after females again this spring sale season. They have the type and kind and the convenience traits that can really set your herd apart from the competition. And again this is another flush made by the great Promogen on the female end. 422 has a top 1% WWV to go along with a top 4% YW, top 20% HP, top 15% CEM, outstanding teat and udder scores, outstanding functional longevity, controlled mature height, very good docility, top 4% marbling with outstanding dollar values.



JK C5 Ms Hustler 413-5H91

34

Birth Date: 09/06/2024

Cow: +*21033602

Freeze Brand: 413

SEO Ultra Provider
FF Rito Hustler 1B69
RMRK Rita 0237



GB Fireball 672
4 Sons Treasure 5H91
M A R Treasure 1601

G A R Momentum K836
Chair Rock Progress 3023
Thomas Edison 6764
RMRK Rita 8232
G A R Sure Fire 6404
GB Anticipation 432
FF Rito 2Q26 of 356H 9Q13
T C A Protege Treasure 003



CED	BW	WW	YW	SC	DOC	CLAW	ANGLE	HS
+8	+2.9	+82	+151	+1.16	+18	+37	+38	-16
HP	MILK	CWT	MARB	REA	\$M	\$W	\$B	\$C
+13.0	+27	+86	+1.35	+1.37	+60	+72	+236	+366

CED	BW	WW	YW	DMI	YH	SC	Doc	Claw	Angle	PAP	HS	HP	CEM	Milk	MW	MH	CW	Marb	REA	Fat	Tend
44	50	35	24	73	21	17	54	10	19	7	1	22	86	43	27	22	10	11	6	15	99

Ranks in the top 1% for HS; top 3% for RE, \$F and \$B; top 4% for CW; top 5% for SC; top 10% for YW, YH, Claw, PAP, MH, Fat and SG; top 15% for RADG, Angle, MW and Marb; top 20% for WW.

This young Hustler daughter brings all the bells and whistle's needed in the industry today, she has outstanding phenotype an absolutely perfect genotype. The dam by Fireball traces back to MAR Treasure 1601, one of the top cows ever identified in the 4 Sons herd. 413 has top 10% YW, a tremendous scrotal and HP combination, controlled mature height and mature weight, excellent foot scores, negative PAP, top 3% CW, top 15% MARB, top 3% RE with outstanding dollar values.

JK C5 Ms Hustler 414-252

35

Birth Date: 09/18/2024 Cow: +*21043247 Freeze Brand: 414

SEO Ultra Provider
FF Rito Hustler 1B69
RMRK Rita 0237



Beal Breakthrough
C5 Ms Breakthrough 252
HR Blackcap 8914

G A R Momentum K836
Chair Rock Progress 3023
Thomas Edison 6764
RMRK Rita 8232
G A R Prophet K263
H P C A Sure Fire S6
Byergo Black Magic 3348
Quaker Hill Blackcap 4PT1



CED	BW	WW	YW	SC	DOC	CLAW	ANGLE	HS
+4	+2.9	+86	+151	+1.39	+20	+47	+45	-.06
HP	MILK	CWT	MARB	REA	\$M	\$W	\$B	\$C
+12.6	+33	+87	+1.69	+1.4	+70	+88	+241	+383

CED	BW	WW	YW	DMI	YH	SC	Doc	Claw	Angle	PAP	HS	HP	CEM	Milk	MW	MH	CW	Marb	REA	Fat	Tend
76	83	18	19	95	44	20	55	43	45	42	2	9	87	39	44	59	11	2	5	87	89

Ranks in the top 1% for HS; top 2% for SC; top 3% for RE, \$G and \$B; top 4% for CW and Marb; top 10% for WW, YW, Milk, \$W and \$F; top 20% for SC; top 25% for YH and MW.

The mating of Hustler to the great Breakthrough has the makings of a game changing female for the Angus breed. Hustler was the \$240,000 high seller for Friendship Farms female sale. Hustler is a herd sire prospect that will certainly command your attention as he struts through the pen. He is a fancy profiling bull that has a long clean front end with tremendous neck extension and herd bull presence. 414 has top 10% growth, excellent scrotal and HP combination, top 10% milk, very good functional longevity, tremendous foot scores, good PAP, top 4% CW, top 4% MARB and RE along with tremendous dollar values.



Lot 36

JK C5 Ms Hustler 430-4425

36

Birth Date: 12/27/2024 Cow: +*21177814 Freeze Brand: 430

SEO Ultra Provider
FF Rito Hustler 1B69
RMRK Rita 0237



Connealy Clarity
AH/B I G Clarity 0184 4425
B&B Rita 0184

G A R Momentum K836
Chair Rock Progress 3023
Thomas Edison 6764
RMRK Rita 8232
Cherry Creek Land Grant
Breshie of Conanga 6988
E W A Peyton 642
H P C A Surefire P457



CED	BW	WW	YW	SC	DOC	CLAW	ANGLE	HS
+6	+3.1	+93	+162	+1.39	+22	+37	+30	+16
HP	MILK	CWT	MARB	REA	\$M	\$W	\$B	\$C
+13.2	+32	+88	+1.75	+72	+75	+93	+244	+391

CED	BW	WW	YW	DMI	YH	SC	Doc	Claw	Angle	PAP	HS	HP	CEM	Milk	MW	MH	CW	Marb	REA	Fat	Tend
59	65	23	12	72	30	19	44	16	3	68	14	11	90	32	29	38	17	2	56	34	89

Ranks in the top 2% for YH, Angle, \$B and \$C; top 3% for CW, Marb and \$G; top 4% for WW, YW and \$F; top 5% for \$W; top 10% for Claw, HS and MH; top 15% for RADG, Milk and MW; top 20% for SC; top 25% for HP.

When you walk into the pasture, 430 immediately jumps out at you with her outstanding balance and overall power. She is definitely the front pasture kind, and her dam 4425 is one of the true power cows in the breed, with an absolute perfect frame and dimension. 430 has top 3% YW, big-time scrotal and HP combination, top 15% milk, controlled mature height, very good docility, excellent foot scores, top 2% marbling with top 3% CW to go along with stunning dollar values.



Lot 37

JK RKR Erica Rito 5031

37

Birth Date: 09/09/2025 Cow: *21224606 Freeze Brand: 5031

Sterling Pacific 904
M A R Pacifico 260
M A R Miss Amy 9012



M A R Alternative 029
M A R Erica Rito 2003
M A R Erica Rito 0017

Hoover No Doubt
Baldridge Isabel B082
Baldridge Alternative E125
M A R Miss Amy 1743
Baldridge Alternative E125
M A R Blackcap 1628
Casino Bomber N33
MAR Erica Rito 1401



CED	BW	WW	YW	SC	DOC	CLAW	ANGLE	HS
+10	+0.6	+83	+154	+2.06	+27	+55	+47	+01
HP	MILK	CWT	MARB	REA	\$M	\$W	\$B	\$C
+9.6	+25	+75	+1.01	+94	+56	+79	+204	+321

CED	BW	WW	YW	DMI	YH	SC	Doc	Claw	Angle	PAP	HS	HP	CEM	Milk	MW	MH	CW	Marb	REA	Fat	Tend
64	60	14	1	90	71	2	9	64	41	28	1	76	14	65	21	35	10	36	34	47	96

Ranks in the top 1% for RADG; top 2% for SC and HS; top 5% for CEM; top 10% for YW and \$F; top 15% for WW, DOC, CW and \$B; top 20% for CED, MW, \$W and \$C; top 25% for \$G.

This super exciting young female by Pacifico back to the great Erica Rito family, will bring you something magical, sometimes genetics will check nearly every box and this one does that very well. 5031 has a double digit CED, top 10% YW, top 2% scrotal, excellent CEM, controlled mature height and mature weight, top 15% docility, very good PAP, top 15% CW with balanced dollar values.



RKR Everelda Entense 5041

38

Birth Date: 02/18/2025 Cow: *21367238 Freeze Brand: 5041

SITZ Full Service
FF Full Service L11
FF Shoshone JF D113



Will Conclusion J30
FF Bravo L53
Will Bravo H21

Sitz Accomplishment 720F
SITZ Henrietta Pride 198D
KR DINERO
JF Shoshone W42
FF Conclusion F83
Willekes Bonny E02
Coleman Bravo 6313
Pine Coulee Entense T515



CED	BW	WW	YW	SC	DOC	CLAW	ANGLE	HS
+8	+1.8	+71	+129	+64	+26	+45	+34	+51
HP	MILK	CWT	MARB	REA	\$M	\$W	\$B	\$C
+14.3	+28	+56	+1.07	+52	+78	+71	+171	+300

CED	BW	WW	YW	DMI	YH	SC	Doc	Claw	Angle	PAP	HS	HP	CEM	Milk	MW	MH	CW	Marb	REA	Fat	Tend
16	26	21	14	88	60	48	16	20	2	86	58	8	17	23	18	55	13	12	85	82	30

Ranks in the top 4% for Angle; top 15% for HP; top 20% for DOC and Teat; top 25% for CEM and \$M.

Big-time out cross pedigree here with the Full Service going back to Conclusion, this one should definitely be one with a big-time future. 5041 has very good growth, excellent HP, very good milk, controlled mature height and mature weight, really good docility, excellent foot scores to go along with outstanding dollar values.

Lot 38

KK

RKR Erica 5012

39

Birth Date: 01/14/2025 Cow: *21209512 Freeze Brand: 5012

Poss Maverick
M A R El Dorado
M A R Erica 1806



Jindra Megahit
M A R Erica 9002
M A R Erica 1741

Basin Payweight 1682
Poss Pride 5163
3F Epic 4631
Highwood Erica Rito 209
Hoff Blockbuster SC 929 1612
Hoff Sweetheart S C 216
PA Fortitude 2500
Highwood Erica Rito 009



CED	BW	WW	YW	SC	DOC	CLAW	ANGLE	HS
-11	+4.7	+98	+167	+37	+22	+55	+43	+40
HP	MILK	CWT	MARB	REA	\$M	\$W	\$B	\$C
+10.7	+22	+85	+90	+77	+14	+75	+205	+280

CED	BW	WW	YW	DMI	YH	SC	Doc	Claw	Angle	PAP	HS	HP	CEM	Milk	MW	MH	CW	Marb	REA	Fat	Tend
100	99	1	1	92	12	80	44	56	12	61	29	83	61	64	1	2	1	17	31	23	84

Ranks in the top 1% for MW; top 2% for WW and MH; top 3% for YW; top 4% for \$F; top 5% for CW; top 10% for YH and Fat; top 15% for RADG and \$B.

This special sale highlight by El Dorado, who was a past high seller for the great Malek herd in Montana, combines the great Blockbuster and PA Fortitude two bulls that were known for size and dimension. 5012 has a top 2% YW, top 1% mature weight and top 1% mature height, very good docility, excellent angle, good PAP, top 4% CW with balanced dollar values.



Lot 39

Reference Sire



M A R Pacifico 260

KK

RKR Miss Amy 5058

40

Birth Date: 03/06/2025 Cow: *21246882 Freeze Brand: 5058

Sterling Pacific 904
M A R Pacifico 260
M A R Miss Amy 9012



Bobcat Blue Sky
M A R Miss Amy 0006
M A R Miss Amy 1743

Hoover No Doubt
Baldridge Isabel B082
Baldridge Alternative E125
M A R Miss Amy 1743
Musgrave Big Sky
Bobcat Lass 411
Rito 9Q20 of Rita 5F56 GHM
MAR Miss Amy 1404

Act Birth Wt
78
Adj WW
621



CED	BW	WW	YW	SC	DOC	CLAW	ANGLE	HS
+12	-0.2	+59	+108	+76	+16	+53	+43	+43
HP	MILK	CWT	MARB	REA	\$M	\$W	\$B	\$C
+7.9	+36	+47	+1.06	+41	+48	+69	+156	+250


CED	BW	WW	YW	DMI	YH	SC	Doc	Claw	Angle	PAP	HS	HP	CEM	Milk	MW	MH	CW	Marb	REA	Fat	Tend
4	6	95	87	29	97	51	56	31	15	48	30	92	100	6	89	93	97	50	82	55	26

Ranks in the top 4% for Milk; top 10% for CED; top 20% for BW; top 25% for UDDR.

This special sale highlight is line bred to the great Miss Amy 1743, one of the top cows ever identified in the Malek herd. MAR Pacifico 260, was the \$40,000 high selling herd sire from the 2023 Malek bull sale. 5058 has a double digit CED and a negative BW, very good milk, excellent teat and udder scores, very controlled mature height and mature weight, top 30% angle, very good PAP, top 25% marbling and balanced dollar values.

RKR Full Service 5026

41 Birth Date: 02/0/2025 Cow: Pending Freeze Brand: 5026

SITZ Full Service
FF Full Service L11
 FF Shoshone JF D113
 Connealy Big Valley
FF Big Valley L27

Sitz Accomplishment 720F
 SITZ Henrietta Pride 198D
 KR DINERO
 JF Shoshone W42
 Connealy Dry Valley
 Bunty Lay of Conanga 4930

Sire
 EPDs

CED	BW	WW	YW	SC	DOC	CLAW	ANGLE	HS
+15	-2.5	+80	+149	+1.39	+17	+48	+28	+50
HP	MILK	CWT	MARB	REA	\$M	\$W	\$B	\$C
+13.5	+15	+81	+78	+77	+69	+63	+203	+332


CED	BW	WW	YW	DMI	YH	SC	Doc	Claw	Angle	PAP	HS	HP	CEM	Milk	MW	MH	CW	Marb	REA	Fat	Tend
70	50	7	1	99	49	2	19	36	17	22	84	43	51	65	6	27	1	48	40	89	60

A fancy Full Service daughter backed by a Connealy Big Valley dam purchased from Fleisch Angus. This combination promises moderate birth with explosive growth and performance on top of exceptional carcass. *Updates available by sale day.*



RKR Promptitude 5044

42 Birth Date: 02/20/2025 Cow: 21319436 Freeze Brand: 5044

SITZ Full Service
FF Full Service L11
 FF Shoshone JF D113
 RKP Latigo 040
FF Promptitude L141
 FF Promptitude H218

Sitz Accomplishment 720F
 SITZ Henrietta Pride 198D
 KR DINERO
 JF Shoshone W42
 Vermilion Spur E143
 Vermilion Lass 0213
 Connealy Rimrock 7541
 JF Promptitude Y9

CED	BW	WW	YW	SC	DOC	CLAW	ANGLE	HS
+6	+0.2	+53	+104	+1.24	+7	+57	+39	+67
HP	MILK	CWT	MARB	REA	\$M	\$W	\$B	\$C
+12.2	+20	+51	+54	+42	+51	+39	+151	+247

CED	BW	WW	YW	DMI	YH	SC	Doc	Claw	Angle	PAP	HS	HP	CEM	Milk	MW	MH	CW	Marb	REA	Fat	Tend
62	57	80	25	58	69	5	92	75	23	76	91	28	46	84	56	62	44	70	90	56	68


Ranks in the top 1% for UDDR; top 3% for Teat; top 15% for Angle; top 20% for Fat; top 25% for BW.

A super balanced female by Full Service that traces back to Vermilion Spur, one of the top female sires ever identified in Montana. 5044 has a balanced birth to growth spread, very good scrotal and HP combination, excellent CEM, top 2% teat and udder scores, very controlled mature height and mature weight, very good angle, excellent carcass and dollar values.



RKR Lucy 5018

43 Birth Date: 01/22/2025 Cow: *21206162 Freeze Brand: 5018

Sterling Pacific 904
M A R Pacifico 260
 M A R Miss Amy 9012
 M A R Fate 158
M A R Lucy 3046
 M A R Lucy 1642

Hoover No Doubt
 Baldridge Isabel B082
 Baldridge Alternative E125
 M A R Miss Amy 1743
 SydGen FATE 2800
 M A R Blackbird 1350
 Stevenson Rainmaker 3454
 M A R Lucy 1357

CED	BW	WW	YW	SC	DOC	CLAW	ANGLE	HS
+1	+3.2	+61	+117	+1.17	+21	+27	+51	+46
HP	MILK	CWT	MARB	REA	\$M	\$W	\$B	\$C
+14.0	+31	+65	+62	+1.10	+68	+56	+184	+307

CED	BW	WW	YW	DMI	YH	SC	Doc	Claw	Angle	PAP	HS	HP	CEM	Milk	MW	MH	CW	Marb	REA	Fat	Tend
41	37	89	53	55	87	19	58	2	78	34	44	15	98	32	63	78	59	65	17	39	59

Ranks in the top 1% for Claw; top 10% for \$F; top 15% for HP and RE; top 20% for RADG and Milk; top 25% for \$B and \$C.

5018 speaks for herself, she is a real meat wagon that comes to watch from the top herd sire in the entire program. The great MAR Pacifico 260, who was in turn the \$40,000 high selling sire at a past Malek Angus bull sale. 5018 has a great birth to growth spread, very good scrotal and HP combination, excellent milk, very good docility, top 2% claw, excellent RE with balanced dollar values.



Progressive Embryo Packages



Ney Rita Embryos

44

3 IVF Embryos

S Architect 9501
Dandy Acres Skyline
Dandy Acres Black Raven 2018
SS Identified 7551
Ney Rita 1S13-368
FF Rita 1S13 8R63 Salvation FF Rita 8R63 of 2718 Right

SydGen Blueprint
S Blossom 7514
Hart Hercules 7017
Dandy Acres Black Raven 007
Mill Brae Identified 4031
G A R Prophet 1463
SG Salvation

CED	BW	WW	YW	SC	DOC	CLAW	ANGLE	HS
+8	+1.0	+100	+175	+1.08	+28	+50	+50	+48
HP	MILK	CWT	MARB	REA	\$M	\$W	\$B	\$C
+13.7	+29	+106	+0.86	+1.32	+77	+104	+235	+382

CED	BW	WW	YW	SC	DOC	CLAW	ANGLE	HS
+7	+2.8	+93	+159	+86	+16	+44	+42	+22
HP	MILK	CWT	MARB	REA	\$M	\$W	\$B	\$C
+12.9	+27	+95	+1.62	+1.21	+91	+94	+254	+420

What an exciting chance here to buy 3 embryos by Dandy Acres Skyline to the great Ney Rita 368, a donor that is numerically superior along with being phenotypically outstanding. There are very few animals in the data base that can compete with this complete pedigree, this could be a game changing mating. 368 has top 5% YW, excellent HP, top 20% functional longevity, controlled mature height and weight, very good foot scores, top 2% CW along with top 5% MARB to go along with elite dollar values.

Reference Sire



Poss Longbow



Blackcap Embryos

46

3 IVF Embryos

Connealy Clarity
Poss Longbow
G A R Sunrise 2016
Connealy Craftsman
Antczak Blackcap 3147
LW Blackcap 121

Cherry Creek Land Grant
Breshie of Conanga 6988
G A R Sunrise
G A R Ingenuity 3132
Sitz Resilient 10208
Black Cathy of Conanga 8521
G A R Home Town
Montana Blackcap 928

CED	BW	WW	YW	SC	DOC	CLAW	ANGLE	HS
+14	-0.9	+79	+137	+35	+30	+42	+45	+26
HP	MILK	CWT	MARB	REA	\$M	\$W	\$B	\$C
+14.4	+30	+70	+2.06	+1.26	+110	+93	+251	+436

CED	BW	WW	YW	SC	DOC	CLAW	ANGLE	HS
+5	+2.5	+94	+164	+33	+27	+42	+51	+21
HP	MILK	CWT	MARB	REA	\$M	\$W	\$B	\$C
+16.0	+26	+97	+1.69	+0.87	+92	+93	+262	+432

What a chance here to buy some of the first Poss Long Bow calves to be born in Montana, coming from a dam that has really picked up steam in the last few production sales. 3147 is the top Craftsman daughter in the country, she was a past \$40,000 highlight from the Antczak Production Sale. 3147 has a top 4% YW, top 3% HP, excellent CEM, controlled mature weight, top 15% docility, excellent claw, top 1% CW, top 4% marbling, top 10% \$M to go with an outstanding 431 \$C.

Reference Sire



Dandy Acres Skyline



Blackcap Embryos

45

3 IVF Embryos

BNWZ Bougie 1588
CA/MAR Lazarus 491
2 Bar Fireball 0630

Connealy Craftsman
Antczak Blackcap 3147
LW Blackcap 121

SG Salvation
RB Lady Denver 167-453
GB Fireball 672
2 Bar Acclaim 8621
Sitz Resilient 10208
Black Cathy of Conanga 8521
G A R Home Town
Montana Blackcap 928

CED	BW	WW	YW	SC	DOC	CLAW	ANGLE	HS
+9	+2.6	+85	+147	+90	+16	+40	+37	+22
HP	MILK	CWT	MARB	REA	\$M	\$W	\$B	\$C
+11.9	+29	+81	+1.57	+1.08	+61	+83	+239	+371

CED	BW	WW	YW	SC	DOC	CLAW	ANGLE	HS
+7	+2.8	+93	+159	+86	+16	+44	+42	+22
HP	MILK	CWT	MARB	REA	\$M	\$W	\$B	\$C
+12.9	+27	+95	+1.62	+1.21	+91	+94	+254	+420

What an outstanding chance here to buy three embryos from the great Antczak Blackcap 3147, who was the \$40,000 sale highlight and high selling female from the 2024 Antczak Bull sale. 3147 has had six different sisters garner at least \$30,000 each, this is not only a good genomic family, they are very impressive phenotypically. The sire of this incredible embryo mating is not other than CA Lazarus, who was the \$130,000 high selling bull of the 2025 Cattleman's Congress selling to Grimmus Cattle company. Make no mistake, this will be a very futuristic mating.

Reference Sire



CA/MAR Lazarus 491

Stockmens Insurance

- All Risk Mortality (ARM)
 - 7% up to \$24,999
- ARM & Accident, Sickness & Disease Infertility
 - 12.5% up to \$25k
- ARM & Comprehensive Infertility
 - 16% up to \$24,999
 - 17% \$25,000 or more

Rokstone Insurance

- All Risk Mortality (ARM)
 - 8.5% up to \$150,000



Kevin Peterson

406-683-6882

kevin@montanainsurance.net



Josh Boka

406-660-6100

josh@montanainsurance.net

Mountainview Insurance offers mortality insurance designed to protect your investment in the event of death or loss of use of your animal.

Also contact us for consultation on **Farm & Ranch, PRF Rainfall Insurance & Livestock Risk Protection.**

Contact us today to discuss your options.

(406) 683-6881





Driving the science of better breeding

There's little room for error in the cattle business. You need the most advanced information to make smart selection decisions, and Angus Genetics Inc. (AGI®) provides it through genomically-enhanced expected progeny differences (GE-EPDs). GE-EPDs have become the industry standard for herd improvement, building on decades of science-backed genetic evaluation tools originated and maintained through the American Angus Association®, home to the largest and ever-growing single-breed beef cattle database.

EPDs that traditionally contained all pedigree, performance and progeny information now also include results from available genomic, or DNA, tests. Breeders who use genomic technology give buyers access to AGI-generated GE-EPDs that provide:

Increased predictability and decreased risk for young and unproven animals due to enhanced accuracy of EPDs

Better characterization of genetics for difficult-to-measure performance traits
(such as carcass traits, maternal traits and feed efficiency)

The ability to make more rapid progress for traits that are important to you, due to:

- more accurate selection
- easier identification of genetic outliers
- the ability to propagate young animals with confidence earlier in their lives

In fact, GE-EPDs on unproven animals have the same level of accuracy as if they had recorded 7-33 calves, depending on the trait. That's valuable insight, offered regularly through the breed's weekly national cattle evaluation.

Trait	Progeny Equivalent	Trait	Progeny Equivalent
Calving Ease Direct	24	Heifer Pregnancy	28
Calving Ease Maternal	18	Maternal Milk	33
Birth Weight	22	Mature Weight	14
Weaning Weight	25	Mature Height	9
Yearling Weight	20	Carcass Weight	13
Yearling Height	15	Marbling Score	10
Dry Matter Intake	12	Ribeye Area	11
Scrotal Circumference	12	Backfat Thickness	11
Docility	10	Teat Size	12
Foot Claw Set	13	Udder Suspension	13
Foot Angle	12	Pulmonary Arterial Pressure	7
		Hair Shed Score	10

How do you know if EPDs are genomically-enhanced?

Ask your breeder, refer to the registration paper, or look for the AGI GE-EPD logo, Angus GS™ powered by partner Neogen GeneSeek or the HD50K by partner Zoetis. These images indicate animals for which low-density or high-density genomic testing has been conducted and incorporated by AGI into GE-EPDs.



Angus.org/AGI



STEEL ROOFING SIDING & TRIM

Protech Steel is built for the ranches, shops, and barns that keep the West moving—beautiful, bold, and timelessly tough. Our Montana-made steel roofing and siding is designed to take wind, weather, and hard work without flinching. From open country builds to everyday ag projects, we deliver trusted protection, clean lines, and true Western durability.

WE'RE COMMITTED

- 40YR WARRANTY
- FAST PRODUCTION TIME
- DELIVERY OPTIONS
- RUN-ON-SITE AVAILABLE
- FREE ESTIMATES

Contact Us
1-(406) 403-7234





Barrie's

Family Restaurant
Black Eagle, MT

**Restaurant
Banquets
Lounge
Take-Out**



50% off on your Birthday Meal
Featuring Prime Rib every Tuesday
½ Price Bottle Wine every Wednesday (with meal purchase)
Crab Leg Special every Thursday

**Steak • Chicken • Spaghetti • Ravioli
Seafood • Kid's Menu**

Established
in 1938
4 generations

HOURS

Monday: Closed

Tues - Thurs 5:00 - 8:30

Friday 4:30 - 9:00

Saturday 4:00 - 9:00

Sunday 4:00 - 8:00

406-761-0300

1800 Smelter Ave

10 Blocks East of Walmart in Black Eagle



Thank You for Choosing Rimrock Snowy Mountains CDJR

The team at Rimrock Snowy Mountains CDJR would like to welcome you to our dealership in Lewistown, where we're confident you'll find the vehicles you're looking for at a price you can afford. Come and check out our full selection of new **Chrysler, Dodge, Jeep, Ram** vehicles, or get a great deal on a reliable pre-owned model. No matter which vehicle you decide on, our professional **finance team** will help you get settled with a competitive financing or lease plan.

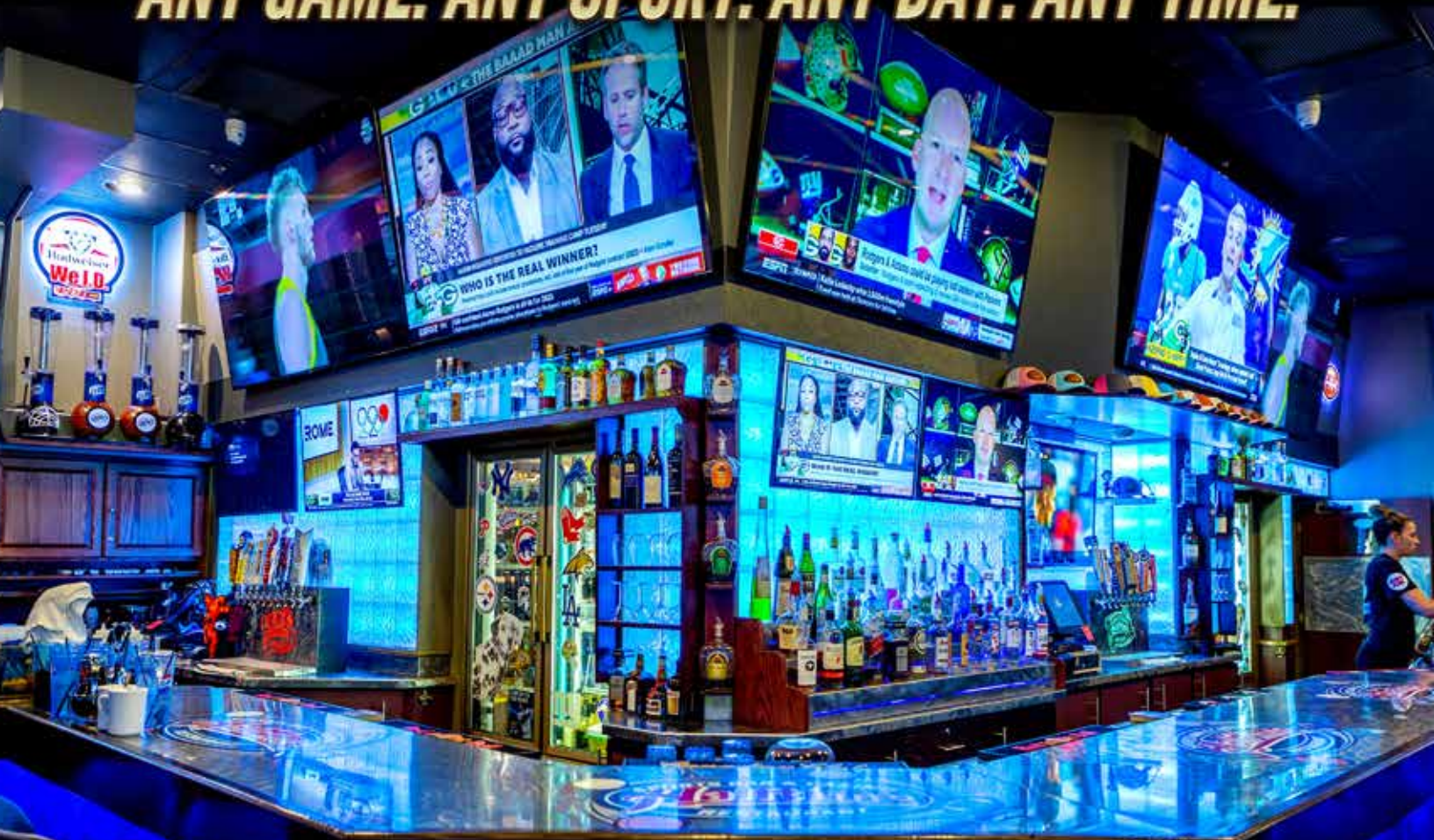
When you're looking for quality auto maintenance and repairs near Lewistown, you can always count on the professional technicians in our Chrysler, Dodge, Jeep, Ram **service department** as well, where we handle everything from oil changes and filter replacements to powertrain and drivetrain repairs. Schedule an appointment today, or purchase **parts** from us to handle maintenance and repairs on your own!

80739 US HWY 87
LEWISTOWN, MT

(406) 380-4296



ANY GAME. ANY SPORT. ANY DAY. ANY TIME.



LIVE
GAME STREAMING
ALL SPORTS PACKAGES



SERVING



TACO TREAT FAVORITES

BREAKFAST | LUNCH | DINNER

1101 NW BYPASS | 727-8053

3 BLOCKS WEST OF EXPO PARK ON NW BYPASS

HALTIMESPORTSBAR.NET



Riding for the Brand. AND THE FUTURE.

Your ranch isn't just land — it's your family's future. Montana ranchers know it takes grit to grow and build a lasting legacy. Independence Bank understands the cycles, the pressures, and the opportunities.

We're here with flexibility, fast lending, and a handshake you can still count on.

A photograph of a rancher wearing a cowboy hat, crouching in a dirt corral. A black horse with a saddle is on the left, and a black calf is on the right. The rancher is reaching out to the calf. The background shows a wooden fence and a grassy hill under a cloudy sky.

The AgriCULTURE of
SUCCESS



**Independence
BANK**

ibyourbank.com

Member
FDIC



Summit of Montana
12 Trader Lane
Great Falls MT 59404
406-298-4949
www.summitstructures.com





JOHNSON DISTRIBUTING

1021 3rd ST NW, GREAT FALLS, MT 59405



406-453-6541

JOHNSONDISTRIBUTING.COM



Independence
BANK

Mason Walker

Ag/Commercial Loan Officer

406.781.9855/406.315.5850

masonw@ibyourbank.com

901 River Dr N - Great Falls, MT





Continuing the family tradition of higher standards and competitive pricing!

EXPERIENCE THE CITY MOTOR DIFFERENCE

- *Upfront Pricing*
- *Non-Commission Sales Team*
- *3-Day Money Back Guarantee**
- *30-Day Exchange Policy***
- *Real Cash Value for Trades*



city
Motor Company



Together
let's drive™



www.citymotorgm.com • (406) 761-4900
3900 10th Ave. South • Great Falls, MT 59405

*3-Day Money Back Guarantee on most pre-owned vehicles. Must return with 300 miles or less. **Vehicle must be returned in the same condition as when purchased.



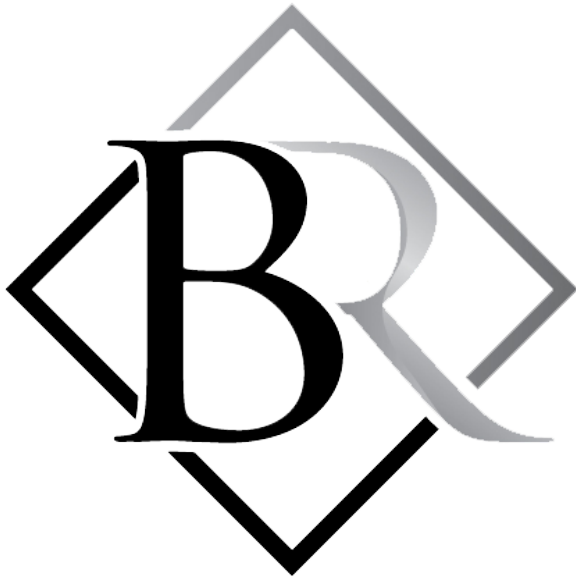
H&H Fabrication and Trailer Repair



H&H Fabrication and Trailer Repair is Helena's premiere trailer and truck upfitting shop. We have the largest parts inventory in Helena. We sell trailers, trailer parts, truck bodies and upfitting accessories all at online retail pricing. We are your one stop shop for all trailer and truck upfitting needs.



**FABRICATION &
TRAILER REPAIR
406-351-9193**

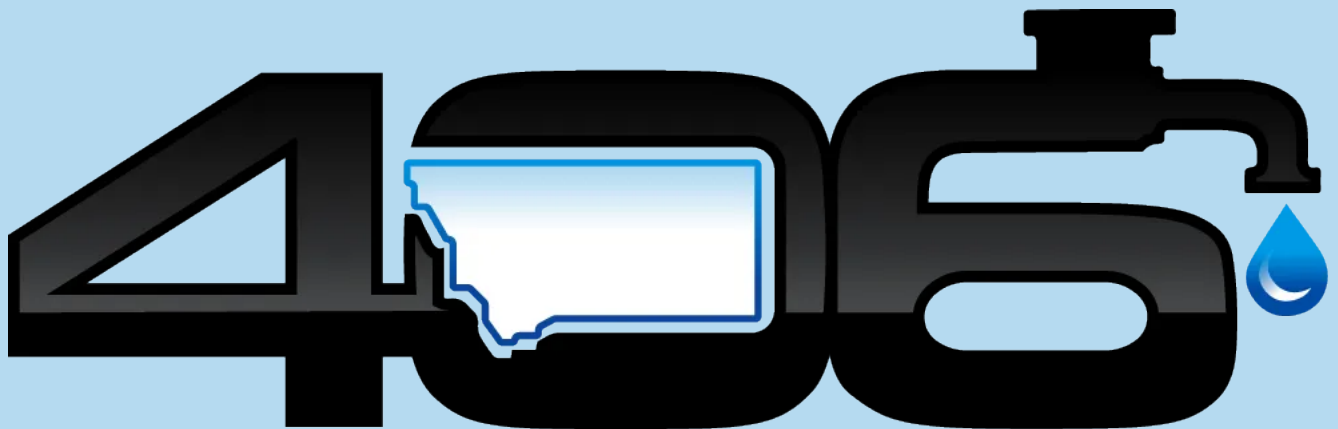


Bahny Realty, LLC
(406) 461-2824
cody@bahnyrealty.com

BAHNY REALTY



BILL BAHNY
— & ASSOCIATES —



WATER WELLS

Serving all of Montana with licensed, insured expertise
with 20+ years in the well drilling field.

(406) 799-3906

Cory Bronson

Great Falls, MT

info@406waterwellsmt.com



FARMERS UNION INSURANCE

We live where you live.

CONTACT YOUR LOCAL AGENT TODAY

Home | Farm | Auto | Crop | Commercial

WWW.FUMICO.NET

A MONTANA COMPANY SINCE 1915



T&K TruckCo

WE BRING DREAMS TO DRIVEWAYS!

**Vehicle Sales, Vehicle Accessories,
Vehicle Customization**

www.tktruckco.com

**4501 INNOVATION STREET
GREAT FALLS, MONTANA 59404**

406.868.8259





Rockin K Ranch Co.
Tyler & Kristie Williams
PO Box 72
Great Falls, MT 59403



February 26, 2026

1 pm MDT

***Montana Expo Park
Great Falls, Montana***

(406) 899-2838

Take home a 2026 Honda Rancher 4x4!

Buyers of each lot purchased will be entered in a drawing to be held following the sale dinner.

