



VIEW THE
Possibilities



LiveOnline™

APRIL 29, 2026

6 PM CT

SALE HELD ONLINE AT CCI.LIVE!





Greetings Angus Friends



Welcome to the View the Possibilities LiveOnline Sale held on April 29th, 2026. At Valley View Angus, we strive to continue to produce top tier Angus cattle that meet the needs of the entire industry. We are dedicated to producing cattle not only with performance and carcass merit but also longevity and eye appeal. We truly believe this offering demonstrates our continued commitment to these efforts!



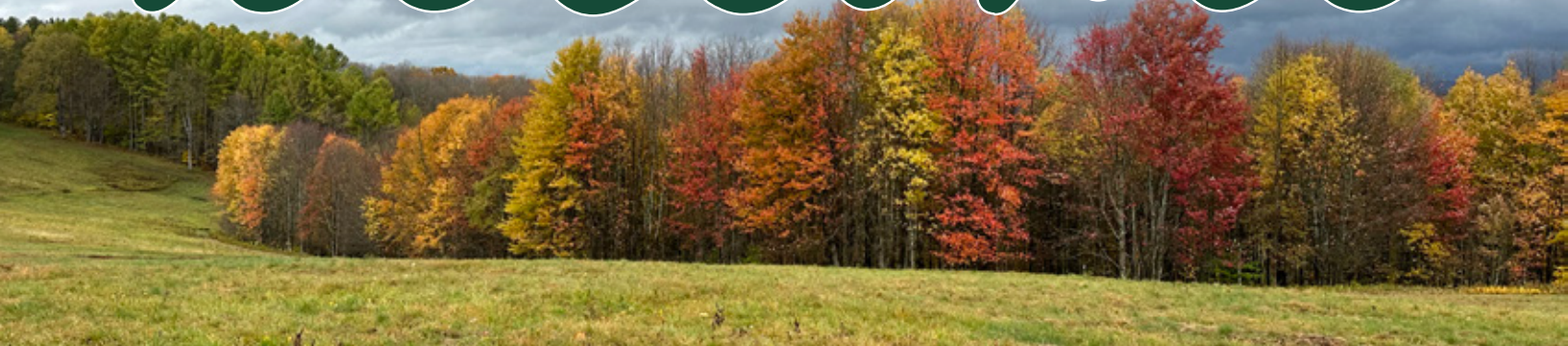
This sale will be held online at CCI.LIVE and everyone is invited and welcomed to the view the cattle anytime. If you have any questions regarding the sale or need more information, please do not hesitate to contact us or the team at CK6 Consulting.

We always enjoy meeting and communicating with breeder throughout the United States. On behalf of everyone here at Valley View Angus, we thank you for your interest in our program as we continue to expand and grow.

Wassim Issa

Wassim Issa, Owner • 716.864.8496
Bradly Storck, Manager • 660.641.0137
bradlystorck@gmail.com

welcome





LiveOnline™ APRIL 29, 2026 - 6 PM CT



**SALE HELD ONLINE
AT CCI.LIVE!**

SALE CONTACTS

Wassim Issa, Owner • 716-864-8496
Bradly Storck, Manager • 660-641-0137
bradlystorck@gmail.com

AUCTIONEER
Wes Tiemann 816-244-4462



CK6 CONSULTING SERVICES
Chris Earl 630-675-6559
Wes Tiemann 816-244-4462
Kody Fleeman 573-881-0117
Amanda Radke 605-999-4300

TERMS & CONDITIONS

Cattle will sell under the suggested Terms and Conditions of the American Angus Association (http://www.angus.org/Pub/suggested_sale_terms.pdf).

HERD HEALTH

All animals have been fully vaccinated and routinely dewormed.

ANNOUNCEMENTS

A supplemental update sheet will be available sale day with up-to date breeding and calving information. All announcements made from the auction block take precedence over printed matter in this sale book.

EMBRYOS

Embryos selling in this offering sell with a guarantee of one pregnancy.

INSURANCE

Your cattle may be insured from James F Bessler Inc, 815-762-2621

SETTLEMENT

All cattle, embryos and pregnancies are to be settled for prior to shipping out unless prior arrangement has been made with the manager/owner. Terms are cash or check.

LOCATION OF CATTLE

Cattle are located at 13469 Mustang Ave., Nelson, MO 65347. Cattle will be on display April 28th from Noon until 5 p.m. and April 29th from 9 a.m. until 5 p.m.



Join CCI.live Online for the Sale!

*The best, the fastest and most comprehensive
online marketing & bidding tool!*

BUYERS NOTE, you do not need an account or to login to watch the sale but you must have a validated account to bid.

Viewed Around the World!

**SALE CATALOG, VIDEOS,
and LIVE BROADCAST...**

all at your fingertips from the sale page
at www.CCI.live! Watch sales live weekly!



www.CCI.live

(405) 400-9505 Text or Call - schedule@cci.live
Find us on the App Store and Google Play
Over 35 years in livestock marketing!



VALLEY VIEW SARAH 6423
DAM OF LOT 1



6 MILE HOME TOWN J06
\$110,000 GRANDAM OF LOT 1
AT JOCKO VALLEY, MT



Mallory



1

VALLEY VIEW SARAH 8625 ET

COW • REG 21344642 • DOB 08/03/25 • TATTOO 8625

— GB Fireball 672#
INFERNO 2G44 OF GAR
 — Lassie Erica 0167 of GAR
ANGUSGS
 — Beal Breakthrough
VALLEY VIEW SARAH 6423
 — 6 Mile Home Town J06

G A R Sure Fire 6404
 GB Anticipation 432
 Deer Valley Growth Fund#
 Lassie Erica 4126 of GAR
 G A R Prophet K263
 H P C A Sure Fire S6
 G A R Home Town#
 6 Mile Peyton 937

CED	BW	WW	YW	RADG	DMI	YH	SC	HP	CEM	MILK
10	1.7	86	147	0.31	1.40	0.8	1.00	18.7	13	32
20%		10%	15%	20%		25%		1%	10%	15%
MW	MH	DOC	CLAW	ANGLE	PAP	HS	CW	MARB	RE	FAT
65	0.5	28	0.55	0.45	-0.86	0.41	87	1.81	1.45	0.024
		15%			15%		4%	3%	2%	
\$AXH	\$AxJ	\$M	\$W	\$F	\$G	\$B	\$C			
293	275	108	97	141	119	260	445			
1%	1%	1%	3%	2%	1%	1%	1%			

CED	BW	WW	YW	DMI	YH	SC	DOC	CLAW	ANGL	PAP	HS	HP	CEM	MLK	MW	MH	CW	MRB	RE	FAT	TEND
32	67	19	18	66	30	28	10	39	10	8	26	1	25	35	67	59	3	1	2	25	91

- Offering the only female in the breed combining her elite levels of HP, Marb, and RE. She is one of just 20 females in the breed with her combination of \$M, \$B, and \$C.
- Backed by the powerful Sarah family, a cornerstone of the program and consistent revenue driver. A maternal sister to her dam was the \$85,000 second high-selling heifer in the most recent sale to Grimmus Cattle Co., and her grandam was the \$110,000 Jocko Valley purchase. A heifer pregnancy sold for \$29,000 to JB Farms out of the Sarah 6423 in the December 25' sale.
- Her unique blend of calving ease, performance, and carcass value—combined with a top-tier heifer pregnancy—positions her for immediate and long-term impact. Sired by the high-demand Inferno 2G44 of GAR, whose semen has commanded \$3,000–\$5,000 per unit, adding further value to this rare opportunity.
- Selling 1/2 interest.



**KARAMAS
PEYTON 3080
GRANDAM OF
LOT 2**

**VALLEY VIEW
KARAMA 7123
\$90,000
MATERNAL
SISTER TO DAM
OF LOT 2 AT
CIRCLE F, GA**



2

VALLEY VIEW KARAMA 83125

COW • REG 21344663 • DOB 08/31/25 • TATTOO 83125

— Connealy Clarity
PEAK DRAFT PICK

— Vintage Rita 0404

ANGUS^{GS}

— Ankonian Paragon 0C4

VALLEY VIEW KARAMA 6523

— Karamas Peyton 3080

Cherry Creek Land Grant#
Breshie of Conanga 6988
GB Fireball 672#
44 Rita 6291
G A R Combustion
G A R Early Bird N985
E W A Peyton 642#
Powell Karama 7308

CED	BW	WW	YW	RADG	DMI	YH	SC	HP	CEM	MILK											
3	3.3	93	155	0.28	1.39	0.7	0.55	13.3	7	29											
		4%	10%			35%		25%		30%											
MW	MH	DOC	CLAW	ANGLE	PAP	HS	CW	MARB	RE	FAT											
52	0.4	23	0.42	0.42	0.55	0.25	92	1.73	1.19	0.008											
		35%	25%	25%		20%	2%	3%	10%												
\$AXH	\$AxJ	\$M	\$W	\$F	\$G	\$B	\$C														
290	271	102	100	146	113	259	438														
1%	2%	2%	2%	2%	1%	2%	1%			1%											
CED	BW	WW	YW	DMI	YH	SC	DOC	CLAW	ANGL	PAP	HS	HP	CEM	MILK	MW	MH	CW	MRB	RE	FAT	TEND
65	75	11	27	57	57	69	19	15	13	30	10	5	66	33	78	72	2	2	8	35	79

- One of only eight females in the breed with her elite combination of WW, YW, Marb, RE, \$M, \$B, and \$C. A true growth and carcass leader that still maintains a \$Maternal value over 100.
- Backed by the influential Karama family, tracing to the Williams Prop Karama 200-117 donor, a proven foundation female known for advancing performance and carcass genetics within the program.
- A maternal sister to her dam produced the \$90,000 Circle F selection in the 2024 Summer sale, with additional standout females selling to Wheeler Angus (MO) and Wright Angus (AR) in the 2025 female sale.



3 VALLEY VIEW VICTORINE 41425 ET
 COW • REG 21250368 • DOB 04/24/25 • TATTOO 41425

— GB Fireball 672#
INFERNO 2G44 OF GAR
 — Lassie Erica 0167 of GAR
ANGUSGS
 — Beal Breakthrough
VALLEY VIEW VICTORINE 9623
 — Bar 7 Clarity A748 1604

G A R Sure Fire 6404
 GB Anticipation 432
 Deer Valley Growth Fund#
 Lassie Erica 4126 of GAR
 G A R Prophet K263
 H P C A Sure Fire S6
 Connealy Clarity
 CAM Sure Fire A748

CED	BW	WW	YW	RADG	DMI	YH	SC	HP	CEM	MILK											
7	2.7	102	183	0.37	1.82	0.9	0.56	11.5	10	35											
		1%	1%	1%		20%			30%	10%											
MW	MH	DOC	CLAW	ANGLE	PAP	HS	CW	MARB	RE	FAT											
112	1.1	23	0.54	0.38	3.31	0.29	96	1.86	1.58	-0.015											
15%	10%	35%		15%		20%	1%	2%	1%	20%											
\$AXH	\$AxJ	\$M	\$W	\$F	\$G	\$B	\$C														
321	321	79	108	147	126	273	433														
1%	1%	20%	1%	1%	1%	1%	1%														
CED	BW	WW	YW	DMI	YH	SC	DOC	CLAW	ANGL	PAP	HS	HP	CEM	MLK	MW	MH	CW	MRB	RE	FAT	TEND
43	70	4	2	61	39	76	30	77	6	78	9	62	53	21	39	28	4	1	1	29	78

- One of only 14 females in the breed that provides her outstanding levels of WW, YW, MB, and RE. She ranks in the top 1% of the breed for 7 of the 8 index's provided by American Angus.
- A true performance and carcass leader who should replicate incredible red meat yield for generations. Her Victorine cow family has gained momentum in this program in the last several sales and has been identified as true producer of power.
- A pregnancy out of the full sister to this females dam commanded \$36,000 to Nowatzke Cattle and Maple Lane in IN. Her dam was the \$26,000 selection of Two Rivers Cattle in GA.



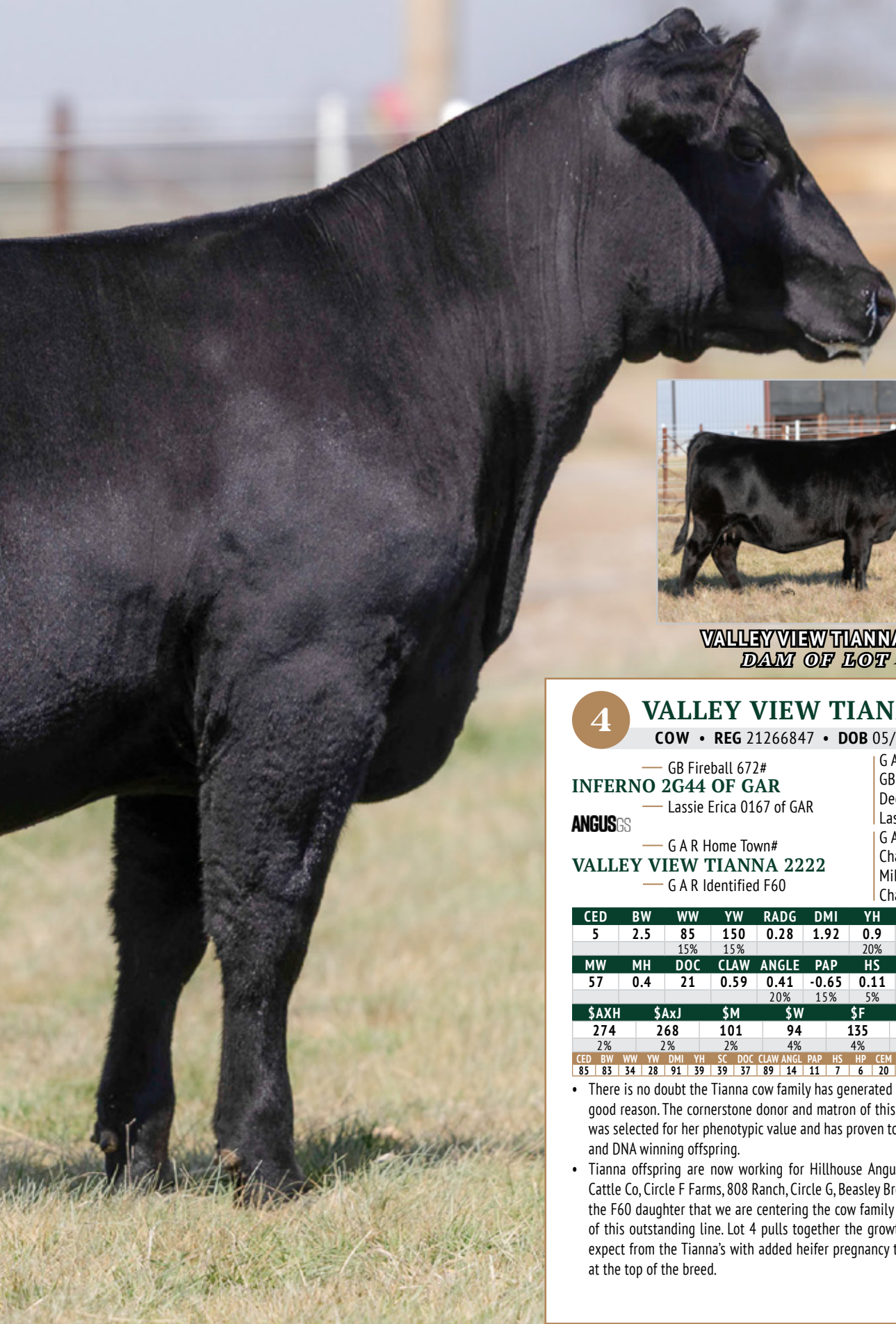
VALLEY VIEW VICTORINE 9623
 DAM OF LOT 3



VALLEY VIEW VICTORINE 91123
 FULL SISTER TO THE DAM OF LOT 3



Mallory



VALLEY VIEW TIANNA 2222
DAM OF LOT 4

4

VALLEY VIEW TIANNA 5325 ET

COW • REG 21266847 • DOB 05/16/25 • TATTOO 5325

— GB Fireball 672#
INFERNO 2G44 OF GAR

— Lassie Erica 0167 of GAR

ANGUS^{GS}

— G A R Home Town#

VALLEY VIEW TIANNA 2222

— G A R Identified F60

G A R Sure Fire 6404
GB Anticipation 432
Deer Valley Growth Fund#
Lassie Erica 4126 of GAR
G A R Ashland#
Chair Rock Sure Fire 6095
Mill Brae Identified 4031#
Chair Rock 100X 6047

CED	BW	WW	YW	RADG	DMI	YH	SC	HP	CEM	MILK											
5	2.5	85	150	0.28	1.92	0.9	1.09	15.7	12	33											
		15%	15%			20%	35%	4%	15%	10%											
MW	MH	DOC	CLAW	ANGLE	PAP	HS	CW	MARB	RE	FAT											
57	0.4	21	0.59	0.41	-0.65	0.11	86	1.94	1.15	0.039											
				20%	15%	5%	4%	2%	10%												
\$AXH	\$AxJ	\$M	\$W	\$F	\$G	\$B	\$C														
274	268	101	94	135	120	255	432														
2%	2%	2%	4%	4%	4%	1%	1%	1%													
CED	BW	WW	YW	DMI	YH	SC	DOC	CLAW	ANGL	PAP	HS	HP	CEM	MLK	MW	MH	CW	MRB	RE	FAT	TEND
85	83	34	28	91	39	39	37	89	14	11	7	6	20	26	83	69	6	1	11	77	50

- There is no doubt the Tianna cow family has generated buzz around this program and for good reason. The cornerstone donor and matron of this tribe is G A R Identified F60, she was selected for her phenotypic value and has proven to be a producer of true eye appeal and DNA winning offspring.
- Tianna offspring are now working for Hillhouse Angus, Tall Timber Angus, Two Rivers Cattle Co, Circle F Farms, 808 Ranch, Circle G, Beasley Brothers, and others. Tianna 2222 is the F60 daughter that we are centering the cow family around as the second generation of this outstanding line. Lot 4 pulls together the growth and carcass you have come to expect from the Tianna's with added heifer pregnancy to generate \$M, \$B, and \$C levels at the top of the breed.



VALLEY VIEW TIANNA 1423
DAM OF LOT 5



VALLEY VIEW TIANNA 12324
MATERNAL SISTER TO LOT 5



G A R IDENTIFIED F60
GRANDAM OF LOT 5

5 VALLEY VIEW TIANNA 4925 ET
COW • REG 21243822 • DOB 04/18/25 • TATTOO 4925

— G A R Transcendent
B&B PREEMINENT
— B&B OF04 of 6528XFireball
ANGUSGS
— Ankonian Paragon OC4
VALLEY VIEW TIANNA 1423
— G A R Identified F60

G A R Momentum#
G A R Prophet 2685
GB Fireball 672#
2 Bar Partner 6528
G A R Combustion
G A R Early Bird N985
Mill Brae Identified 4031#
Chair Rock 100X 6047

CED	BW	WW	YW	RADG	DMI	YH	SC	HP	CEM	MILK											
4	3.2	95	168	0.33	2.15	1.1	1.02	14.0	11	15											
		3%	3%	10%		10%		15%	25%												
MW	MH	DOC	CLAW	ANGLE	PAP	HS	CW	MARB	RE	FAT											
106	1.3	20	0.60	0.46	2.38	0.19	97	1.99	1.51	-0.021											
15%	3%					10%	1%	1%	1%	15%											
\$AXH	\$AXJ	\$M	\$W	\$F	\$G	\$B	\$C														
304	317	67	73	149	132	281	431														
1%	1%		35%	1%	1%	1%	1%														
CED	BW	WW	YW	DMI	YH	SC	DOC	CLAW	ANGL	PAP	HS	HP	CEM	MLK	MW	MH	CW	MRB	RE	FAT	TEND
50	80	6	6	90	19	22	61	75	41	75	4	17	14	97	30	12	1	1	1	24	89

- What a great combination of marbling and rib eye here. Along with her carcass weight EPD collectively she ranks in the top 80 females in the entire breed for that elite trio. As you look at her WW, YW, HP, and MB values she ranks among the top 40 in the breed with those stats.
- Her dam was the \$30,000 selection of 808 Ranch in Missouri. The Tianna family has injected excellent phenotype while suppling curve bending data around strong DNA results.



Mallory

6 VALLEY VIEW VICTORINE 8925 ET
 COW • REG 21344634 • DOB 08/07/25 • TATTOO 8925

— Beal Breakthrough
BYRD BULLSEYE 1186-A100
 — Vintage Blackcap 1186
ANGUSGS
 — Connealy Clarity
BAR 7 CLARITY A748 1604
 — CAM Sure Fire A748

G A R Prophet K263
 H P C A Sure Fire S6
 GB Fireball 672#
 Vintage Blackcap 9186
 Cherry Creek Land Grant#
 Breshie of Conanga 6988
 G A R Sure Fire#
 CAM Prophet A5051

CED	BW	WW	YW	RADG	DMI	YH	SC	HP	CEM	MILK											
9	1.0	78	159	0.38	1.93	0.9	1.39	9.7	12	30											
30%		25%	5%	1%		20%	20%		15%	25%											
MW	MH	DOC	CLAW	ANGLE	PAP	HS	CW	MARB	RE	FAT											
87	1.0	22	0.49	0.38	2.52	0.05	96	1.78	1.43	-0.023											
35%	10%			15%		3%	1%	3%	2%	15%											
\$AXH	\$AxJ	\$M	\$W	\$F	\$G	\$B	\$C														
307	301	59	76	164	121	285	429														
1%	1%		25%	1%	1%	1%	1%														
CED	BW	WW	YW	DMI	YH	SC	DOC	CLAW	ANGL	PAP	HS	HP	CEM	MILK	MW	MH	CW	MRB	RE	FAT	TEND
31	42	64	1	79	45	23	17	19	7	85	3	73	29	34	60	32	10	1	1	13	86



**BAR 7 CLARITY
 A748 1604
 DAM OF LOT 6**



**VALLEY VIEW
 VICTORINE 91123
 MATERNAL
 SISTER TO LOT
 6 AND DONOR
 AT VALLEY
 VIEW**

- Here is a direct daughter of our cornerstone Victorine cow family donor, Bar 7 Clarity A748 1604. The pedigree here is double stacked with performance and carcass values in the upper crust of the breed.
- Her three quarter sister is a donor in the program by Beal Breakthrough. The Victorine cow family has gained momentum in this program in the last several sales and has been identified as true producer of power.
- A pregnancy out of this females dam commanded \$36,000 to Nowatzke Cattle and Maple Lane in IN.



44 ERIN 2727
DAM OF LOT 7



VALLEY VIEW ERIN 4824
MATERNAL SISTER OF LOT 7 AT
PETERSON PRIME ANGUS, MO



VALLEY VIEW ERIN 4124
\$45,000 MATERNAL SISTER OF LOT
7 AT TWO RIVERS CATTLE, GA

7

VALLEY VIEW ERIN 7525 ET

COW • REG 21307634 • DOB 07/19/25 • TATTOO 7525

— Connealy Clarity
PEAK DRAFT PICK

— Vintage Rita 0404
ANGUS^{GS}

— Ankonian Paragon 0C4
44 ERIN 2727

— Valley View Erin 9069

Cherry Creek Land Grant#
Breshie of Conanga 6988
GB Fireball 672#
44 Rita 6291
G A R Combustion
G A R Early Bird N985
Byergo Black Magic 3348#
Bridges Sure Fire 65

CED	BW	WW	YW	RADG	DMI	YH	SC	HP	CEM	MILK											
8	2.7	89	148	0.31	0.85	0.9	1.12	12.6	16	28											
35%		10%	15%	20%	25%	20%	35%	35%	1%	35%											
MW	MH	DOC	CLAW	ANGLE	PAP	HS	CW	MARB	RE	FAT											
63	0.8	25	0.49	0.40	2.19	0.19	82	1.55	1.68	-0.071											
	25%	25%		20%		10%	10%	10%	1%	1%											
\$AXH	\$AxJ	\$M	\$W	\$F	\$G	\$B	\$C														
288	294	94	94	138	116	254	423														
1%	1%	5%	4%	3%	2%	1%	1%														
CED	BW	WW	YW	DMI	YH	SC	DOC	CLAW	ANGL	PAP	HS	HP	CEM	MLK	MW	MH	CW	MRB	RE	FAT	TEND
31	70	19	51	19	22	33	10	35	14	80	6	8	6	40	63	34	9	3	1	3	95

- One of only 9 females in the entire breed for her elite projections of MB, RE, and \$M at that combination or better. This heifer moves the needle big time when offering such impressive RE along with all the other traits she does so well in.
- Valley View Erin 7525 is a well balanced female combining top performance sires in the breed on top and bottom of her pedigree.
- The Erin cow family has been prolific with daughters working for Two Rivers Cattle Co. Peterson Prime Angus, Butz Hill, Dixie Farms, and JB Farms.



8 VALLEY VIEW AMANDA 9425 ET
 COW • REG 21344666 • DOB 09/07/25 • TATTOO 9425

— Connealy Clarity
PEAK DRAFT PICK
 — Vintage Rita 0404
ANGUS_{GS}
 — GB Fireball 672#
VALLEY VIEW AMANDA 9023
 — 44 Early Bird 1747

Cherry Creek Land Grant#
 Breshie of Conanga 6988
 GB Fireball 672#
 44 Rita 6291
 G A R Sure Fire 6404
 GB Anticipation 432
 Roseda Powerball23 F091
 G A R Early Bird N985

CED	BW	WW	YW	RADG	DMI	YH	SC	HP	CEM	MILK											
13	0.2	81	150	0.38	1.13	0.7	1.28	11.7	11	23											
10%	25%	20%	15%	1%		35%	25%		25%												
MW	MH	DOC	CLAW	ANGLE	PAP	HS	CW	MARB	RE	FAT											
92	0.8	29	0.48	0.34	3.19	0.35	79	1.77	0.80	0.056											
30%	25%	10%		4%		30%	10%	3%													
\$AXH	\$AxJ	\$M	\$W	\$F	\$G	\$B	\$C														
237	193	80	76	146	106	253	408														
10%	15%	20%	25%	1%	4%	1%	1%														
CED	BW	WW	YW	DMI	YH	SC	DOC	CLAW	ANGL	PAP	HS	HP	CEM	MLK	MW	MH	CW	MRB	RE	FAT	TEND
12	31	52	16	28	65	15	6	37	2	86	27	15	49	78	58	54	27	2	53	92	100

- This heifer checks a lot of boxes for calving ease, ideal performance, scrotal, docility, and carcass value. As a result, she tally's up well for her index's across the board. Her sire has done a good job on improving data while providing some look to them.
- The Amanda heifers have offered good eye appeal and body capacity. The dam of this female is deep and broody as well.
- From the same cow family that produced Paragon, though 44 Early Bird 1747, the \$200,000 valued powerhouse who's offspring where large revenue producers in the breed.



VALLEY VIEW AMANDA 9023
 DAM OF LOT 8



44 EARLY BIRD 1747
 GRANDAM OF LOT 8 & 9



VALLEY VIEW AMANDA 11154
MATERNAL
SISTER TO THE DAMS OF LOTS 8 AND 9 AT MAPLE LANE FARMS, IN

VALLEY VIEW AMANDA 8123
DAM OF LOT 9



9 VALLEY VIEW AMANDA 8425 ET
 COW • REG 21344641 • DOB 08/02/25 • TATTOO 8425

— GB Fireball 672#
INFERNO 2G44 OF GAR
 — Lassie Erica 0167 of GAR
ANGUS^{GS}
 — Poss Winchester
VALLEY VIEW AMANDA 8123
 — 44 Early Bird 1747

G A R Sure Fire 6404
 GB Anticipation 432
 Deer Valley Growth Fund#
 Lassie Erica 4126 of GAR
 Connealy Clarity
 Poss Blueblood 6502
 Roseda Powerball23 F091
 G A R Early Bird N985

CED	BW	WW	YW	RADG	DMI	YH	SC	HP	CEM	MILK											
2	3.0	86	154	0.32	1.76	1.3	1.27	14.3	13	26											
		10%	10%	15%		2%	25%	15%	10%												
MW	MH	DOC	CLAW	ANGLE	PAP	HS	CW	MARB	RE	FAT											
84	1.0	16	0.54	0.36	-0.76	0.30	84	1.76	1.46	-0.025											
		10%		10%	15%	25%	5%	3%	2%	15%											
\$AXH	\$AxJ	\$M	\$W	\$F	\$G	\$B	\$C														
237	249	79	80	134	120	255	410														
		4%	20%	20%	4%	1%	1%														
CED	BW	WW	YW	DMI	YH	SC	DOC	CLAW	ANGL	PAP	HS	HP	CEM	MLK	MW	MH	CW	MRB	RE	FAT	TEND
89	89	4	2	89	2	19	51	84	10	10	12	6	7	56	21	4	1	1	1	3	53

- A daughter of the \$50,000 Valley View Amanda 8123 who was selected by 44 Farms. This female hits for the marks for her index's and displays elevated carcass traits while remaining in the top 25% for heifer pregnancy EPD.
- From the same Amanda cow family as the lot 8.



10 VALLEY VIEW LANA 81225 ET

COW • REG 21344644 • DOB 08/15/25 • TATTOO 81225

- Beal Breakthrough
 - TK BACKDRAFT**
 - Vintage Blackcap 1186
 - ANGUS^{GS}**
 - G A R Transcendent
 - PPA TRANSCENDENT P392**
 - PPA Home Town P680
- G A R Prophet K263
 - H P C A Sure Fire S6
 - GB Fireball 672#
 - Vintage Blackcap 9186
 - G A R Momentum#
 - G A R Prophet 2685
 - G A R Home Town#
 - E W A 827 of 531 Peyton

CED	BW	WW	YW	RADG	DMI	YH	SC	HP	CEM	MILK											
12	0.4	72	129	0.26	1.26	0.7	0.00	11.3	14	26											
10%	30%		35%			35%			5%												
MW	MH	DOC	CLAW	ANGLE	PAP	HS	CW	MARB	RE	FAT											
74	0.4	19	0.45	0.39	0.32	0.24	71	2.02	1.43	-0.005											
			35%	15%	35%	15%	20%	1%	2%	25%											
\$AXH	\$AxJ	\$M	\$W	\$F	\$G	\$B	\$C														
299	283	68	72	128	131	260	405														
1%	1%		35%	10%	1%	1%	1%														
CED	BW	WW	YW	DMI	YH	SC	DOC	CLAW	ANGL	PAP	HS	HP	CEM	MLK	MW	MH	CW	MRB	RE	FAT	TEND
9	34	48	32	48	44	99	53	17	8	38	10	39	53	62	45	58	16	1	1	34	16



PPA TRANSCENDANT P392
DAM OF LOT 10

- Elite marbling genetics here. Her dam is in the top 13 marbling EPDs dams in the breed today. She was the \$40,000 selection of the 24' Peterson Prime sale and top selling female. As you sort marbling genetics on the AAA data base the P392 offspring will make several of them.
- This will be the first offered of the new Lana family. Utilize her CED, optimal growth, and great big marbling genetics to move ahead here.



VALLEY VIEW RITA 3924

Lot 11
DONOR



G A R GRAND SLAM
REFERENCE SIRE

11 3924 X GRAND SLAM PREGNANCY

— G A R Home Run
G A R GRAND SLAM
— G A R Sunbeam 332

— G A R Grid Maker L1071
VALLEY VIEW RITA 3924
— Valley View Rita 4122

G A R Home Town#
Williams F Blackbird 705-429
G A R Sunbeam
G A R Identified N910
GB Fireball 672#
Chair Rock Sure Fire 6095
HPCA Veracious
5STAR Rita 1608

DAM	SIRE	CED	BW	WW	YW	MILK	MARB	RE	\$M	\$W	\$B	\$C
		18	-2.7	90	158	27	2.43	1.30	99	103	298	486
		1%	2%	10%	5%		1%	4%	4%	1%	1%	1%
DAM	SIRE	CED	BW	WW	YW	MILK	MARB	RE	\$M	\$W	\$B	\$C
		7	2.9	91	153	35	2.08	1.21	80	98	284	448
				5%	10%	10%	1%	10%	20%	3%	1%	1%

- A masterful blend of genetics here with an exciting new donor dam who is next level carcass genetics and ranks in the top 1% for HS and top 20% for Claw EPD. The sire side brings together the #11 \$C bull in the breed who is light years out there for CED and growth spread.
- Due 8/7/2026 in a reliable recipient.



VALLEY VIEW ERIN 4124

Lot 12
DONOR

12 4124 X CLIMAX PREGNANCY

— EAR Prime Time 0002
LENZ CLIMAX L154
— Smith Valley Blackbird 1653

— G A R Grid Maker L1071
VALLEY VIEW ERIN 4124
— 44 Erin 2727

GB Fireball 672#
ACC Barbara 8038
G A R Home Town#
Galaxy Blackbird 8557
GB Fireball 672#
Chair Rock Sure Fire 6095
Ankonian Paragon OC4
Valley View Erin 9069

DAM	SIRE	CED	BW	WW	YW	MILK	MARB	RE	\$M	\$W	\$B	\$C
	11	2.7	90	168	34	2.36	1.42	75	90	287	447	
	15%		10%	2%	10%	1%	2%	30%	10%	1%	1%	
DAM	SIRE	CED	BW	WW	YW	MILK	MARB	RE	\$M	\$W	\$B	\$C
	2	3.7	105	184	31	1.94	1.45	58	100	293	438	
			1%	1%	20%	2%	2%		2%	1%	1%	

- From the phenomenal Erin cow family that has been such a success. This donor was the \$45,000 selection of Two Rivers Cattle Co in GA. She is one of the big time growth and carcass combination females in the breed. The sire side of this pregnancy brings the high docility, and marbling bull Climax.
- Due 9/20/2026 in a reliable recipient.



44 ERIN 2727
GRANDAM OF 4124



Lot 13
DONOR

VALLEY VIEW TIANNA 8724



WILKS CRICK 3708
REFERENCE SIRE



VALLEY VIEW TIANNA 12174
\$100,000 FULL SISTER TO DAM
OF LOT 13'S AT CIRCLE F, GA

13A 8724 X CRICK PREGNANCY

— Ingram Heisman 0566
WILKS CRICK 3708
— DBA Rita 1034

— G A R Grid Maker L1071
VALLEY VIEW TIANNA 8724
— G A R Identified F60

Connealy Confidence Plus#
RB Lady Denver 167-453
G A R Home Town#
Pine View Rita E093
GB Fireball 672#
Chair Rock Sure Fire 6095
Mill Brae Identified 4031#
Chair Rock 100X 6047

DAM	SIRE	CED	BW	WW	YW	MILK	MARB	RE	\$M	\$W	\$B	\$C
	6	2.8	95	162	33	1.64	1.57	99	105	274	454	
			2%	4%	15%	2%	1%	3%	1%	1%	1%	1%
DAM	SIRE	CED	BW	WW	YW	MILK	MARB	RE	\$M	\$W	\$B	\$C
	12	-0.6	76	138	44	1.99	1.35	82	100	275	439	
		10%	15%	30%	25%	1%	1%	3%	20%	2%	1%	1%

- The flush that this lots donor dam came from was electric. Her full sister brought \$100,000 to Circle F in GA. This donor's EPD profile is awesome with a top 3% HP EPD ranking amongst her top 1% MB, \$B and \$C. On the sire side, Crick has been acclaimed to be the most impressive of his brothers, Promise Keeper and Warrior. This mating should result with big data in an eye appealing rascal.
- Due 8/7/2026 in a reliable recipient.

13B 8724 X GRAND SLAM PREGNANCY

— G A R Home Run
G A R GRAND SLAM
— G A R Sunbeam 332

— G A R Grid Maker L1071
VALLEY VIEW TIANNA 8724
— G A R Identified F60

G A R Home Town#
Williams F Blackbird 705-429
G A R Sunbeam
G A R Identified N910
GB Fireball 672#
Chair Rock Sure Fire 6095
Mill Brae Identified 4031#
Chair Rock 100X 6047

DAM	SIRE	CED	BW	WW	YW	MILK	MARB	RE	\$M	\$W	\$B	\$C
	18	-2.7	90	158	27	2.43	1.30	99	103	298	486	
	1%	2%	10%	5%		1%	4%	4%	1%	1%	1%	1%
DAM	SIRE	CED	BW	WW	YW	MILK	MARB	RE	\$M	\$W	\$B	\$C
	12	-0.6	76	138	44	1.99	1.35	82	100	275	439	
		10%	15%	30%	25%	1%	1%	3%	20%	2%	1%	1%

- Here is the opportunity at the same cow but to Grand Slam, the lot one bull of the 26' April GAR bull sale who has sold out of semen on each collection he makes!
- Due 9/20/2026 in a reliable recipient.



VALLEY VIEW TIANNA 2222



RHOADES SWAROVSKI
REFERENCE SIRE



G A R GRAND SLAM
REFERENCE SIRE

14A 2222 X SWAROVSKI PREGNANCY

— Connealy Clarity
RHOADES SWAROVSKI 3007
— RB Lady Denver 167-453

— G A R Home Town#
VALLEY VIEW TIANNA 2222
— G A R Identified F60

Cherry Creek Land Grant#
Breshie of Conanga 6988
EXAR Denver 2002B#
R B Lady Party 167-305
G A R Ashland#
Chair Rock Sure Fire 6095
Mill Brae Identified 4031#
Chair Rock 100X 6047

DAM	CED	BW	WW	YW	MILK	MARB	RE	\$M	\$W	\$B	\$C
SIRE	3	3.6	92	162	35	1.67	1.76	84	94	278	445
			4%	4%	10%	2%	1%	15%	4%	1%	1%
SIRE	8	1.5	73	133	31	1.61	1.21	96	79	245	414
	30%		25%	15%	20%	2%	3%	3%	15%	1%	1%

- This will be the maternal mating to the lot four in this sale. The future of 2222 is going to be a good one. She is one of the Tiannas that we will move the program forward with. On the sire side comes the powerhouse Swarovski. He is one of the unique bulls in the breed for his performance and power with top 2% teat and uddr EPDs. This mating might be the intriguing one a year from now!
- Due 9/20/2026 in a reliable recipient.

14B 2222 X GRAND SLAM EMBRYOS

— G A R Home Run
G A R GRAND SLAM
— G A R Sunbeam 332

— G A R Home Town#
VALLEY VIEW TIANNA 2222
— G A R Identified F60

G A R Home Town#
Williams F Blackbird 705-429
G A R Sunbeam
G A R Identified N910
G A R Ashland#
Chair Rock Sure Fire 6095
Mill Brae Identified 4031#
Chair Rock 100X 6047

DAM	CED	BW	WW	YW	MILK	MARB	RE	\$M	\$W	\$B	\$C
SIRE	18	-2.7	90	158	27	2.43	1.30	99	103	298	486
	1%	2%	10%	5%		1%	4%	4%	1%	1%	1%
SIRE	8	1.5	73	133	31	1.61	1.21	96	79	245	414
	30%		25%	15%	20%	2%	3%	3%	15%	1%	1%

- From the same great female as lot 164A with G A R Grand Slam. Here is a chance to bank a big DNA winner.
- This is a set of 3 IVF RSF embryos. Bid price will be times three.



Mallory

VALLEY VIEW SARAH 6423

Lot 15
DONOR



Mallory

6 MILE HOME TOWN J06
\$110,000 GRANDAM OF LOT 15 & 16 AT
JOCKO VALLEY, MT

15 6423 X GRAND SLAM PREGNANCY

— G A R Home Run
G A R GRAND SLAM
— G A R Sunbeam 332

— Beal Breakthrough
VALLEY VIEW SARAH 6423
— 6 Mile Home Town J06

G A R Home Town#
Williams F Blackbird 705-429
G A R Sunbeam
G A R Identified N910
G A R Prophet K263
H P C A Sure Fire S6
G A R Home Town#
6 Mile Peyton 937

DAM	SIRE	CED	BW	WW	YW	MILK	MARB	RE	\$M	\$W	\$B	\$C
		18	-2.7	90	158	27	2.43	1.30	99	103	298	486
		1%	2%	10%	5%	1%	4%	4%	1%	1%	1%	
DAM	SIRE	CED	BW	WW	YW	MILK	MARB	RE	\$M	\$W	\$B	\$C
		12	1.1	90	158	29	1.60	1.35	95	95	250	419
		10%		2%	2%	30%	2%	1%	3%	2%	1%	1%

- This will be the maternal sister mating to lot one in this sale. Valley View Sarah 6423 is such a dynamic donor that just does it all right here. With Grand Slam on the sire side the resulting DNA should be excellent here.
- Due 9/20/2026 in a reliable recipient.



VALLEY VIEW SARAH 9924

Lot 16
DONOR

16 9924 X GRAND SLAM PREGNANCY

— G A R Home Run
G A R GRAND SLAM
— G A R Sunbeam 332

— DE-SU Certainty E349
VALLEY VIEW SARAH 9924
— 6 Mile Home Town J06

G A R Home Town#
Williams F Blackbird 705-429
G A R Sunbeam
G A R Identified N910
Connealy Clarity
DE-SU C174
G A R Home Town#
6 Mile Peyton 937

DAM	SIRE	CED	BW	WW	YW	MILK	MARB	RE	\$M	\$W	\$B	\$C
		18	-2.7	90	158	27	2.43	1.30	99	103	298	486
		1%	2%	10%	5%		1%	4%	4%	1%	1%	1%
DAM	SIRE	CED	BW	WW	YW	MILK	MARB	RE	\$M	\$W	\$B	\$C
		6	2.8	102	181	25	1.76	1.35	78	97	269	427
				1%	1%		3%	3%	25%	3%	1%	1%

- Another new and fresh Sarah donor that absolutely mashes down the gas for growth and carcass data. This cow family has been well received for their ability to make good looking cattle with the data to move the needle. The sire side is the Grand Slam who is one of the elite data bulls in the breed today.
- Due 8/7/2026 in a reliable recipient.

17 1624 X INFERNO EMBRYOS

— GB Fireball 672
INFERNO 2G44 OF GAR
— Lassie Erica 0167 of GAR

— EAR Prime Time 0002
VALLEY VIEW QUANAH 1624
— TK Quanah X646

G A R Sure Fire 6404
GB Anticipation 432
Deer Valley Growth Fund#
Lassie Erica 4126 of GAR
GB Fireball 672#
ACC Barbara 8038
Poss Deadwood
Zebo Quanah 8100

DAM	SIRE	CED	BW	WW	YW	MILK	MARB	RE	\$M	\$W	\$B	\$C
		8	1.7	83	146	36	2.04	1.33	91	97	266	436
				15%	15%	5%	1%	2%	10%	3%	1%	1%
DAM	SIRE	CED	BW	WW	YW	MILK	MARB	RE	\$M	\$W	\$B	\$C
		1	2.6	86	154	31	1.92	1.25	42	83	268	390
				10%	10%	20%	2%	10%		15%	1%	2%

- Here is a set of Inferno eggs by Valley View Quanah 1624 owned by Triple C Farms. This mating brings together growth and carcass power at a high end.
- This is a set of 3 IVF SF F. Bid price times three.



VALLEY VIEW QUANAH 1624

Lot 17
DONOR



**VALLEY VIEW
TIANNA 1423
DAM OF LOT 5**



**G A R
IDENTIFIED F60
GRANDAM OF
LOT 5**

18 VALLEY VIEW FINAL DRAFT 4225 ET
BULL • REG 21230973 • DOB 04/02/25 • TATTOO 4225

— Connealy Clarity
PEAK DRAFT PICK
— Vintage Rita 0404

ANGUS^{GS}
— Ankonian Paragon OC4
VALLEY VIEW TIANNA 1423
— G A R Identified F60

Cherry Creek Land Grant#
Breshie of Conanga 6988
GB Fireball 672#
44 Rita 6291
G A R Combustion
G A R Early Bird N985
Mill Brae Identified 4031#
Chair Rock 100X 6047

CED	BW	WW	YW	MILK	DMI	YH	SC	HP	CEM	MILK											
8	1.7	89	153	27	1.33	0.9	0.89	12.4	7	27											
35%		10%	10%			15%															
MW	MH	DOC	CLAW	ANGLE	PAP	HS	CW	MARB	RE	FAT											
61	0.6	21	0.63	0.41	2.07	0.60	101	1.62	1.46	-0.018											
	35%			20%			1%	4%	1%	15%											
\$AXH	\$AxJ	\$M	\$W	\$F	\$G	\$B	\$C														
304	300	86	96	162	113	276	444														
1%	1%	15%	3%	1%	2%	1%	1%														
CED	BW	WW	YW	DMI	YH	SC	DOC	CLAW	ANGL	PAP	HS	HP	CEM	MLK	MW	MH	CW	MRB	RE	FAT	TEND
59	83	19	21	46	54	58	28	81	6	71	71	10	72	50	73	79	2	2	2	16	79

- A maternal brother to lot 5 in this sale. This bull covers all the bases. Moderate birth, great growth, with a carcass line hard to match. The dam of this bull was the \$30,000 selection of 808 Ranch in Missouri. The Tianna family has injected excellent phenotype while suppling curve bending data around strong DNA results.



Mallory

19 VALLEY VIEW TRANSPARENT 3325
BULL • REG 21221345 • DOB 03/21/25 • TATTOO 3325

— GB Fireball 672#
INFERNO 2G44 OF GAR
 — Lassie Erica 0167 of GAR
ANGUSGS
 — Connealy Clarity
BAR 7 CLARITY A748 1604
 — CAM Sure Fire A748

G A R Sure Fire 6404
 GB Anticipation 432
 Deer Valley Growth Fund#
 Lassie Erica 4126 of GAR
 Cherry Creek Land Grant#
 Breshie of Conanga 6988
 G A R Sure Fire#
 CAM Prophet A5051

CED	BW	WW	YW	MILK	DMI	YH	SC	HP	CEM	MILK												
7	1.8	78	143	32	0.90	0.6	0.53	12.2	7	32												
		25%	20%	15%	25%					15%												
MW	MH	DOC	CLAW	ANGLE	PAP	HS	CW	MARB	RE	FAT												
53	0.4	19	0.48	0.43	1.89	0.45	81	1.89	1.33	-0.031												
			30%				10%	2%	3%	10%												
\$AXH	\$AxJ	\$M	\$W	\$F	\$G	\$B	\$C															
311	280	83	86	145	125	271	434															
1%	1%	20%	15%	1%	1%	1%	1%															
CED	BW	WW	YW	DMI	YH	SC	DOC	CLAW	ANGL	PAP	HS	HP	CEM	MLK	MW	MH	CW	MRB	RE	FAT	TEND	
32	70	35	11	22	59	68	50	30	13	72	30	58	66	34	76	62	7	1	1	1	8	74



Clay

BAR 7 CLARITY A748 1604
DAM OF LOT 6

• A maternal brother to lot 6 in this sale. Here is a direct son of our cornerstone Victorine cow family donor, Bar 7 Clarity A748 1604. The pedigree here is double stacked with performance and carcass values in the upper crust of the breed. This guy is packed with carcass value.

CK6 CONSULTING
9800 E Highway 00
Hallsville, MO, 65255



VIEW THE

Possibilities



APRIL 29, 2026 - 6 PM CT

LiveOnline™

SALE HELD ONLINE AT CCI.LIVE!

