



CALIFORNIA DERBY DAYS

MAY 2, 2026 ♦ 2 PM PDT ♦



WELCOME

Parker Friedrich
566 Hillcrest
Stephenville, Texas 76401



Cell: 254-413-2420
Home/Fax 254-968-8162

Welcome to the Inaugural 2026 California Derby Days Sale in Cambria, CA, at the beautiful Rhoades Ranch. The combination of Dixie Valley, Rhoades Ranch and Grimmus Cattle have started this event in correlation with the Kentucky Derby that takes place the same day. This sale will take place live online at 2 pm PDT or 4 pm CDT at Rhoades Ranch. You may attend this event if you like. The live cattle will be available to view anytime between now and sale time at Rhoades Ranch and will be on display sale day.

The offering is deep and loaded with some of the most unique combinations of genetics of any sale that will take place this spring. We lead off the event with an outstanding weaned granddaughter of the famed 1034 donor sired by Everett—she is the number 1 \$C Everett daughter in the entire breed. Following will be 3 heifer pregnancies out of one of the greatest Clarity daughters in the breed that is a direct daughter of 453 sired by Grand Slam, Heisman, and Reno. The Lot 3A from Grimmus and Dixie Valley is sure to be a highlight of the sale, as this heifer pregnancy by Avid is out of the famed 2016 donor who is rapidly becoming one of the hottest donors in America. Lot 4s are the best combination I have seen anywhere for power, phenotype, maternal and carcass in one complete package. As you follow along with the sale book, in Lots 5 through 17, you will find some of the best genomics, big EPD spreads, elite carcass, elite maternal and stellar phenotype that I have ever seen in one offering. This will also be the last Avid semen that will sell this spring—no more Avid semen will be marketed until the fall of 2026.

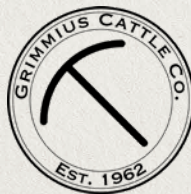
If you have any questions or concerns, please do not hesitate to contact any of these three outstanding breeders, Matt or me, and we will be glad to assist you. Hope to see you in person or online on May 2nd.

Sincerely,

A handwritten signature in black ink that reads "Parker Friedrich". The signature is stylized and written in a cursive-like font.

Parker Friedrich

CONSIGNORS



CALIFORNIA DERBY DAYS

MAY 2, 2026 ♦ 2 PM PDT ♦



AUCTIONEER:
Steve Bonham
(405) 823-2972



MARKETING AGENT:
Parker Friedrich
(254) 413-2420



MARKETING AGENT:
Matt White
(530) 552-0650

SALE DAY PHONES

Parker Friedrich (254) 413-2420
 Matt White..... (530) 552-0650
 Jason Gagnon..... (559) 723-6362
 Justin Rhoades..... (805) 440-5664
 Pedro Reyes..... (806) 676-5264
 Ben Roudabush..... (276) 692-8118
 John Dickinson..... (916) 806-1919

REGIONAL MANAGER, AAA

Landon Andrews (801) 592-7279

SALE BOOK PREPARED BY

Parker Friedrich Marketing and Consulting
 566 Hillcrest Dr. • Stephenville, TX 76401
 (254) 413-2420 mob (254) 968-8162 fax/home
 parkerfriedrich@earthlink.net



INSPECTION OF CATTLE

All live lots are located at Rhoades Ranch, Cambria, CA.
 Available for viewing Friday afternoon and Saturday of the
 sale, or by appointment only outside of those times.

HERD HEALTH

All cattle will be accompanied by proper health certificates
 for immediate shipment.

TERMS & CONDITIONS

Cattle will sell under the suggested Terms and Conditions
 of the American Angus Association ([http://www.angus.org/
 Pub/suggested_sale_terms.pdf](http://www.angus.org/Pub/suggested_sale_terms.pdf)).

ANNOUNCEMENTS

A supplemental update sheet will be available sale day
 with up-to-date breeding and calving information. All
 announcements made from the auction block take
 precedence over printed matter in this sale book.

LIVESTOCK INSURANCE

James Bessler, Great American Insurance • (815) 762-2641

TRUCKING

Randy Lathrop, Lathrop Trucking, Dundee, Illinois •
 (847) 910-4673
 Tom Snell LLC • (580) 374-4168

CATTLE LOAD OUT

Transportation and shipping can be arranged after the
 conclusion of the sale and proper settlement has been
 made.

UPDATED INFORMATION IS AVAILABLE SALE DAY



EMBRYOS

1 pregnancy guarantee per lot.
 Embryos made with semen reverse sorted for females
 (90-95% accurate).

FLUSHES

All flushes are guaranteed 6 grade 1 or 2 embryos no cap,
 guaranteed 2 pregnancies.

BROADCAST ON CCI.LIVE

AM EPDs contained in the hard copy of this sale book were current as of print date. Digital versions of this sale book can be viewed online at www.angus.org and will have EPDs updated every Friday with the exception of EPD references in footnotes and photos. Any PDF downloads from the website will contain EPDs current as of the date downloaded. References: American Angus Association®, AHIR®, AngusLink®, CAB®, Pathfinder®. Parental Avg EPD - Average EPDs between the listed sire and dam. These values are not calculated through the weekly genetic evaluation. The actual EPDs for individual progeny are likely to vary from the expected values listed.

RACE PROGRAM

And They're Off...

The following elite Angus genetics break from the gate today.

Post Position	Animal	Category	Ranch	Details
1	Rhoades Rita 5788	Feature	Rhoades Ranches	E&B Everett daughter, elite \$C +421 Dam is full sister to Wilks Warrior
2	Rhoades Lady 453-3006	Pick of Sire Heifer Pregnancy	Rhoades Ranches	Buyer's choice of Spring Cove Reno, G A R Grand Slam, or Hoffman Heisman
3	G A R Sunrise 2016 X Wilks Avid	Heifer Pregnancy	Dixie Valley Ranch/ Grimmius	Cornerstone Donor X 1.3 Million Young Sire
4	Pick of Connealy Jet Stream 375K Progeny	Pick of Fall 2026 Calves	Dixie Valley Ranch	Early Access to Jet Stream Progeny GAR Sunrise 2016 or Sterling Heisman 3123
5	Rhoades Sunrise 4014	Bred Heifer	Rhoades Ranches	Big Time performance — Big Time Donor



1

LOT 1



X

2

LOTS 2A-2AC

1

2

3

4

5

6

7

8

9



X



3

LOT 3A



X



4

LOT 3B



5

LOT 3D



Mallory



DBA Rita 3609 - Dam of Lot 1

LOT
1

RHOADES RITA 5788

Birth Date: 09-01-2025 · Cow +*21382475 · Tattoo: 5788

#*Tehama Patriarch F028
 *E&B Everett
 20704191 #*E&B Lady Tahoe 194
ANGUS
 +*DBA Rita 3609
 20718726 +*DBA Rita 1034

#*S S Niagara Z29
 Tehama Elite Blackbird D826
 #*Tehama Tahoe B767
 *E&B Lady Foundation 983
 #*Connealy Confidence Plus
 +*RB Lady Denver 167-453
 #*G A R Home Town
 +*Pine View Rita E093



\$M +107
 \$W +97
 \$B +243
 \$C +422

CED	BW	WW	YW	SC	DOC	CLAW	ANGLE	PAP	HS												
+5	+2.6	+95	+169	+1.45	+23	+30	+38	+18	+52												
HP	CEM	MILK	TEAT	UDDR	FL	\$EN	CW	MARB	RE	FAT											
+14.6	+12	+29	+79	+60	+1.11	-31	+105	+1.33	+1.32	+039											
CED	BW	WW	YW	DMI	YH	SC	DOC	HP	CEM	MILK	MW	MH	CW	MRB	RE	FAT	TEND	CLW	ANGL	HS	PAP
80	88	1	1	100	22	37	33	3	5	31	13	25	1	9	1	48	53	2	8	64	40

Owned by Rhoades Ranches/ Galaxy Beef/ Kern Cattle

A standout Rita female sired by E&B Everett and backed by the legendary DBA Rita 1034 influence, Galaxy Rita 5788 offers one of the most unique and valuable maternal pedigrees in the offering. Her dam is a full sister to Wilks Warrior, tying her directly to one of the most influential and high-demand sires in the Grimmius program today. She further separates herself as the #1 \$C Everett daughter in the breed, posting an elite +424 \$C, while combining strong growth, carcass merit, and overall balance. This kind of genomic profile, paired with her pedigree strength, places her in rare company among young females. The Everett influence adds carcass quality and maternal functionality, while the Rita 1034 foundation ensures consistency, fertility, and long-term productivity. This is a female designed to generate both high-end herd bulls and elite replacement females. A true genetic piece that blends proven cow family strength with modern performance, offering immediate value and long-term impact in any progressive breeding program.

LOT
1

SELLING CHOICE IN LOTS 2AA, 2AB, & 2AC



Kate Roberts

Rhoades Lady 453- 3006 - Donor Dam of Lot 2AA, 2AB, 2AC



REF **2A** **RHOADES LADY 453- 3006** [AMF-CAF-DF-DOF-MIF-NHF-QHF-OSF-RDF]
 Birth Date: 02-13-2023 · Cow +*20604228 · Tattoo: 3006

#Cherry Creek Land Grant #K C F Bennett Homestead
 *Connealy Clarity #*Connealy Confidence Plus
 19555171 *Breshie of Conanga 6988 Brely of Conanga 367
ANGUS #*EXAR Denver 2002B #*EXAR Upshot 0562B
 +*RB Lady Denver 167-453 +Exar Royal Lass 1067
 18143482 +*R B Lady Party 167-305 #+*Werner War Party 2417
 +*B A Lady 6807 305



\$M +99
 \$W +97
 \$B +284
 \$C +467

CED	BW	WW	YW	SC	DOC	CLAW	ANGLE	PAP	HS												
+1	+3.4	+92	+158	+1.07	+18	+42	+31	+1.43	+49												
HP	CEM	MILK	TEAT	UDDR	FL	\$EN	CW	MARB	RE	FAT											
+14.0	+8	+33	+7.8	+6.9	+1.09	-30	+103	+1.91	+1.62	-038											
CED	BW	WW	YW	DMI	YH	SC	DOC	HP	CEM	MILK	MW	MH	CW	MRB	RE	FAT	TEND	CLW	ANGL	HS	PAP
91	93	2	2	98	20	27	45	7	54	28	19	18	1	2	1	2	84	12	4	50	73

Owned by Rhoades Ranches
 A direct daughter of Connealy Clarity out of the proven RB Lady Denver 167-453 donor, this female represents one of the most productive and high-income cow families in the Rhoades program. This is the same lineage responsible for the \$200,000 Rhoades Lady 5004, to Grimmus Cattle, validating the earning power and consistency behind this pedigree. Offered here is a heifer pregnancy with buyer's choice of three elite matings, allowing flexibility while still anchoring the opportunity in top-end, proven genetics. These matings combine industry-leading sires with a donor that posts an elite +466 \$C, positioning the resulting calf at the very top end of the market.

LOT **2AA** **HEIFER CALF PREGNANCY**
 Due Date: 08-14-2026

+*G A R Home Run #*G A R Home Town
 *G A R Grand Slam #*Williams F Blackbird 705-429
 21179283 +*G A R Sunbeam 332 +*G A R Sunbeam
 +*Connealy Clarity #Cherry Creek Land Grant
 +*Rhoades Lady 453- 3006 *Breshie of Conanga 6988
 20604228 +*RB Lady Denver 167-453 #*EXAR Denver 2002B
 +*R B Lady Party 167-305

\$M +101
 \$W +100
 \$B +291
 \$C +479

CED	BW	WW	YW	SC	DOC	CLAW	ANGLE	PAP	HS	
+10	+3	+91	+159	+0.97	+23	+56	+47	+1.16	+38	
HP	CEM	MILK	TEAT	UDDR	FL	\$EN	CW	MARB	RE	FAT
+15.5	+13	+30	+6.6	+6.2	+1.1	-23	+96	+2.17	+1.46	+001

Due 8/14/26

LOT **2AB** **HEIFER CALF PREGNANCY**
 Due Date: 10-06-2026

*Schiefelbein Top Gun 522 +*V A R Fire Power
 *Hoffman Heisman Frosty Elba 4220
 21153933 Hoffman Everelda 1752 *TEX Scout 9001
 Hoffman Everelda 8608
 +*Connealy Clarity #Cherry Creek Land Grant
 +*Rhoades Lady 453- 3006 *Breshie of Conanga 6988
 20604228 +*RB Lady Denver 167-453 #*EXAR Denver 2002B
 +*R B Lady Party 167-305

\$M +100
 \$W +96
 \$B +263
 \$C +440

CED	BW	WW	YW	SC	DOC	CLAW	ANGLE	PAP	HS	
+7	+2.6	+98	+165	+1.15	+14	+4	+35	+1.68	+65	
HP	CEM	MILK	TEAT	UDDR	FL	\$EN	CW	MARB	RE	FAT
+14.2	+11	+26	+7.9	+7.6	+1.18	-36	+98	+1.56	+1.46	-028

Due 10/6/26

LOT **2AC** **HEIFER CALF PREGNANCY**
 Due Date: 06-05-2026

#*KM Broken Bow 002 #*Summitcrest Complete 1P55
 #*Spring Cove Reno 4021 #Summitcrest Princess OP12
 17926446 *Spring Cove Liza 021 #*C C A Emblazon 702
 Spring Cove Liza 721
 +*Connealy Clarity #Cherry Creek Land Grant
 +*Rhoades Lady 453- 3006 *Breshie of Conanga 6988
 20604228 +*RB Lady Denver 167-453 #*EXAR Denver 2002B
 +*R B Lady Party 167-305

\$M +108
 \$W +100
 \$B +223
 \$C +397

CED	BW	WW	YW	SC	DOC	CLAW	ANGLE	PAP	HS	
+4	+2.4	+87	+147	+1.06	+22	+38	+42	+2.23	+25	
HP	CEM	MILK	TEAT	UDDR	FL	\$EN	CW	MARB	RE	FAT
+15.1	+9	+32	+8	+6.8	+1.14	-23	+78	+1.54	+1.15	-029

Due 6/5/26



Rhoades Lady 453- 3029 - Dam of Lot 2B Embryos

**LOT
2B**

GABEL X 3029

3 IVF Embryos

*Bear Mtn Justice
 *Bear Mtn Justify
 Bear Mtn Jamie 7860
 *Woodland Centerfire
 *Wilks Rita 8470
 *G A R Prophet K263
 *H P C A Sure Fire S6
 #*EXAR Denver 2002B
 +*R B Lady Party 167-305

\$M +84
 \$W +89
 \$B +252
 \$C +410

Parent Averages

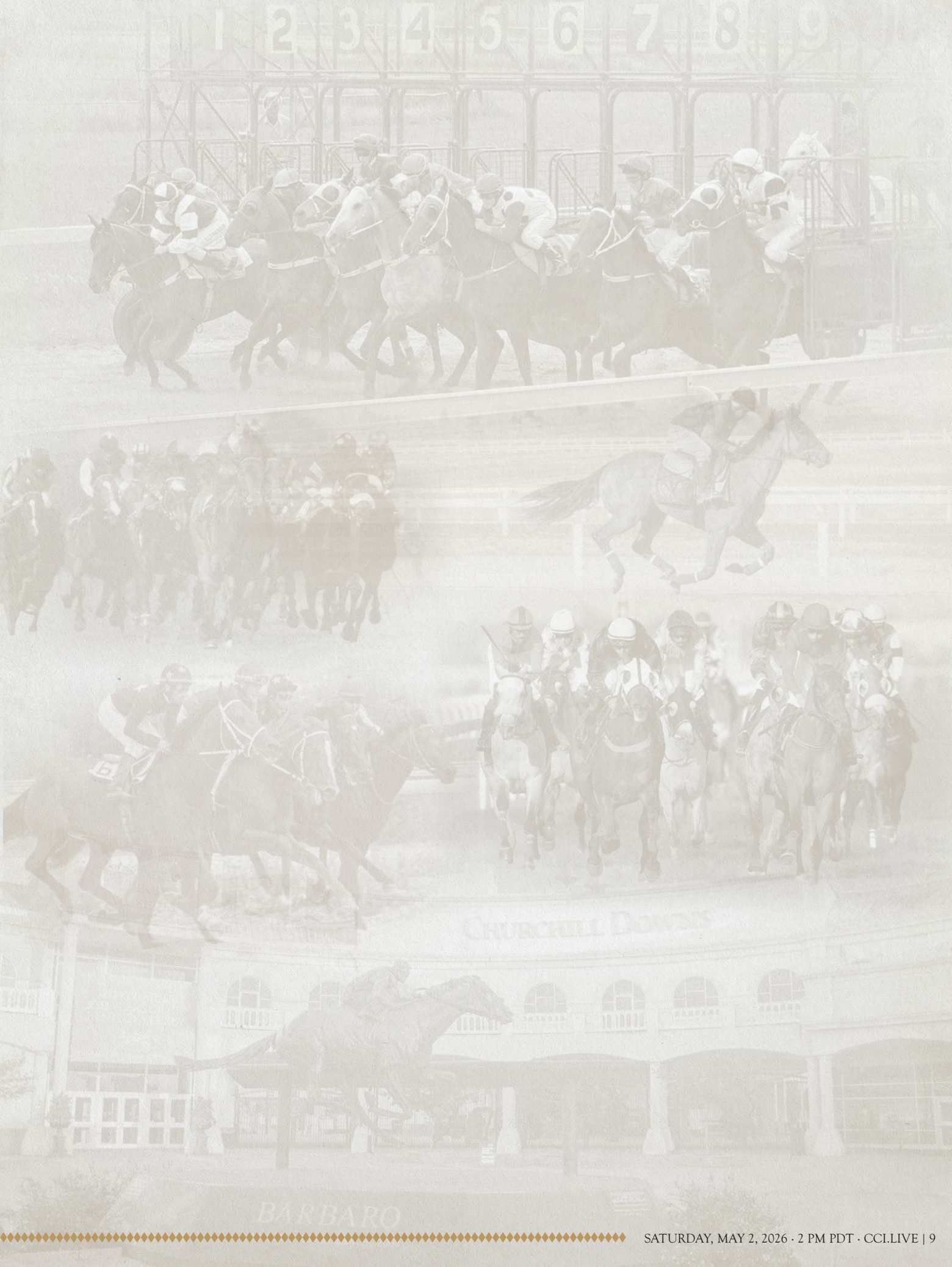
CED	BW	WW	YW	SC	DOC	CLAW	ANGLE	PAP	HS	
+12	+1.8	+86	+156	+1.37	+21	+5	+4	+1.24	+24	
HP	CEM	MILK	TEAT	UDDR	FL	\$EN	CW	MARB	RE	FAT
+14.7	+12	+33	+65	+67	+1.1	-38	+88	+1.76	+1.18	+068

Owned by Rhoades Ranches

Selling 3 IVF embryos out of Rhoades Lady 453-3029, a \$320,000 valued donor sold at the National Finals Angus Sale, and the \$80,000 Wilks Gabel that produced the \$325,000 valued herd sire, Byrd True Balance 3029-5606, who also topped the 2025 NFR sale. Posting +443 \$C and +2.29 Marb, she ranks among the elite females in the breed. This genetic combination is lights out good, folks. Nothing but tremendous earning potential here. Whether it is a bull or a heifer, the sky is the limit. A guarantee of 1 pregnancy if work is performed by a licensed professional.



Wilks Gabel - Sire of Lot 2B Embryos



1 2 3 4 5 6 7 8 9

CHURCHILL DOWNS

BARBARO

PICK OF JET STREAM CALVES



G A R Sunrise 2016 - Dam of Lots 3A & 3B Pregnancy



Poss Vigilante - Maternal Brother to Lots 3A & 3B



Poss Longbow - Maternal Brother to Lots 3A & 3B



LOT 3A HEIFER CALF PREGNANCY

Due Date: 11-01-2026

+*FF Rito Ambitious
 +*Wilks Avid 4864
 21205732 +*DBA Rita 1034

*SEO Ultra Provider
 *RMRK Rita 0237
 #*G A R Home Town
 +*Pine View Rita E093
 #MCC Daybreak
 +*G A R Objective R227
 #+G A R Ingenuity
 +*G A R 28 Ambush N340

\$M +83
 \$W +85
 \$B +257
 \$C +416

#+*G A R Sunrise
 +*G A R Sunrise 2016
 18635927 *G A R Ingenuity 3132

Parent Averages										
CED	BW	WW	YW	SC	DOC	CLAW	ANGLE	PAP	HS	
+11	+6	+84	+145	+49	+26	+47	+49	+07	+37	
HP	CEM	MILK	TEAT	UDDR	FL	\$EN	CW	MARB	RE	FAT
+9.9	+11	+25	+65	+71	+1.05	-18	+79	+1.92	+1.08	+0.17

Owned by Grimmus Cattle and Dixie Valley

Selling a heifer pregnancy out of G A R Sunrise 2016, a full sister to G A R Sunbeam and the proven dam of POSS Vigilante and POSS Longbow, placing her among the most influential donor females in the Angus breed. This is a cow that has already proven her ability to generate elite herd sires and high-dollar progeny, with a recent daughter selling for \$120,000 at the 2026 Panther Creek sale, making her one of the true cornerstone females in the offering. Sired by Wilks Avid, a \$1.3 million valued Grimmus Genetics herd sire, this pregnancy represents one of the first opportunities to access Avid progeny, adding exclusivity, demand, and immediate market appeal. Due November 1, 2026, and carried by a reliable recipient. Located at Trans Ova IA

LOT 3B HEIFER CALF PREGNANCY

Due Date: Fall 2026

*Connealy Gulfstream
 *Connealy Jet Stream 375K
 21010683 *Joya of Conanga 971P

*Connealy King Air
 #*Homera of Conanga 852M
 #*Connealy Long Range
 #Jocie of Conanga 7256
 #MCC Daybreak
 +*G A R Objective R227
 #+G A R Ingenuity
 +*G A R 28 Ambush N340

\$M +96
 \$W +78
 \$B +192
 \$C +345

#+*G A R Sunrise
 +*G A R Sunrise 2016
 18635927 *G A R Ingenuity 3132

Parent Averages										
CED	BW	WW	YW	SC	DOC	CLAW	ANGLE	PAP	HS	
+11	+1	+72	+130	+76	+20	+38	+44	+1.74	+52	
HP	CEM	MILK	TEAT	UDDR	FL	\$EN	CW	MARB	RE	FAT
+13.9	+11	+29	+68	+66	+1.15	-16	+55	+1.29	+83	+0.08

Owned by Dixie Valley

Selling the pick of fall 2026 born calves out of G A R Sunrise 2016 and sired by Connealy Jet Stream 375K, a featured Grimmus herd sire. This offering ties directly into the heart of the Sunrise program while incorporating a modern, performance-driven sire that brings growth, carcass merit, and balance, highlighted by a +342 \$C. The buyer will have the opportunity to select from the resulting calf crop, allowing flexibility to identify and secure the highest-performing individual at the ground level. A rare opportunity to combine proven donor power with a forward-looking herd sire in a selection-based format.



Poss Blackcap 2613 - \$120,000 daughter of Lots 3A & 3B Donor



Connealy Jet Stream 375K - Sire of Lot 3B



LOT
3C

LOT
3C

RHOADES SUNRISE 4014

Birth Date: 03-14-2024 · Cow +*20958835 · Tattoo: 4014

*WAR Cavalry B063 Z044 #*Connealy Cavalry 1149
 +*EZAR Gettysburg 1061 War CC&7 Z044 X029
 20028170 *Paf Rita 7096 #*Connealy Confidence Plus
 ANGUS #*G A R Sunrise #Paf Rita 5091 \$M +66
 #MCC Daybreak \$W +89
 +*G A R Sunrise 2016 +*G A R Objective R227 \$B +257
 18635927 *G A R Ingenuity 3132 #+G A R Ingenuity \$C +399
 +*G A R 28 Ambush N340



CED	BW	WW	YW	SC	DOC	CLAW	ANGLE	PAP	HS												
+4	+2.2	+91	+167	+1.46	+8	+37	+35	+30	+.68												
HP	CEM	MILK	TEAT	UDDR	FL	\$EN	CW	MARB	RE	FAT											
+9.3	+9	+28	+37	+5.2	+1.04	-33	+89	+1.82	+1.18	+.008											
CED	BW	WW	YW	DMI	YH	SC	DOC	HP	CEM	MILK	MW	MH	CW	MRB	RE	FAT	TEND	CLW	ANGL	HS	PAP
29	51	21	5	80	10	23	92	86	51	39	50	29	11	1	35	79	98	7	9	75	47

Owned by Rhoades Ranches

A direct daughter of G A R Sunrise 2016, this female ties directly into one of the most proven and reliable cow families in the entire sale. She represents a natural extension of the same donor that anchors the Avid pregnancy, giving buyers another opportunity to access the Sunrise line in a different form. This mating combines maternal strength with elite carcass merit and balanced performance. Everett adds marbling, ribeye, and end-product value while maintaining the structural integrity expected from the Sunrise family. This female offers immediate production value with a highly marketable calf and long-term relevance as a breeding piece backed by one of the most dependable pedigrees in the breed.

Bred to E&B Everett, due August 3, 2026

LOT
3D

STERLING SUNRISE 5194

Birth Date: 08-24-2025 · Cow +*21380191 · Tattoo: 5194

*WAR Cavalry B063 Z044 #*Connealy Cavalry 1149
 +*44 Cavalry Charge 0155 War CC&7 Z044 X029
 19843968 +*Dean's Queenie Y120 *B/R Future Direction 4268
 ANGUS #*G A R Sunrise #MCC Daybreak \$M +92
 +*G A R Sunrise 2016 +*G A R Objective R227 \$W +92
 18635927 *G A R Ingenuity 3132 #+G A R Ingenuity \$B +234
 +*G A R 28 Ambush N340 \$C +395



CED	BW	WW	YW	SC	DOC	CLAW	ANGLE	PAP	HS												
+11	-.7	+77	+135	+.72	+17	+52	+51	-2.55	+.40												
HP	CEM	MILK	TEAT	UDDR	FL	\$EN	CW	MARB	RE	FAT											
+13.7	+12	+34	+86	+83	+1.07	-17	+77	+1.48	+1.17	+.006											
CED	BW	WW	YW	DMI	YH	SC	DOC	HP	CEM	MILK	MW	MH	CW	MRB	RE	FAT	TEND	CLW	ANGL	HS	PAP
21	18	35	52	26	54	46	67	15	36	10	81	71	14	6	8	77	89	64	82	23	1

Owned by Dixie Valley

A direct daughter of G A R Sunrise 2016, reinforcing the depth and consistency of this elite cow family. Built with a balanced genomic profile, she combines maternal strength with elite carcass merit. Posting +1.47 Marb, +1.17 RE, and +396 \$C, she represents a highly functional female with real-world profitability built in. A practical, long-term female backed by one of the most consistent donors in the breed.



LOT
3D



Frosty Elba 4304 - Dam of Lot 4A Embryos

LOT 4A

AVID X 4304
4 IVF Embryos

+*FF Rito Ambitious
+*Wilks Avid 4864
21205732 +*DBA Rita 1034

*SEO Ultra Provider
*RMRK Rita 0237
#*G A R Home Town
+*Pine View Rita E093
*Ellingson Profound 8155
#EA Queen 8070
+*Schiefelbein Showman 338
#Frosty Bismarck 3041

\$M	+108
\$W	+98
\$B	+243
\$C	+423

CED	BW	WW	YW	SC	DOC	CLAW	ANGLE	PAP	HS	
+8	+2.3	+97	+164	+.87	+27	+4	+37	+85	+43	
HP	CEM	MILK	TEAT	UDDR	FL	\$EN	CW	MARB	RE	FAT
+12.5	+10	+23	+.61	+.75	+1.09	-.19	+94	+1.43	+1.17	+0.3

LOT 4B

WARRIOR X 4304
4 IVF Sexed Heifer Embryos

+*Ingram Heisman 0566
+*Wilks Warrior 3715
20753062 +*DBA Rita 1034

#*Connealy Confidence Plus
+*RB Lady Denver 167-453
#*G A R Home Town
+*Pine View Rita E093
*Ellingson Profound 8155
#EA Queen 8070
+*Schiefelbein Showman 338
#Frosty Bismarck 3041

\$M	+109
\$W	+95
\$B	+230
\$C	+407

CED	BW	WW	YW	SC	DOC	CLAW	ANGLE	PAP	HS	
+6	+2.2	+90	+153	+.81	+25	+33	+32	+92	+.57	
HP	CEM	MILK	TEAT	UDDR	FL	\$EN	CW	MARB	RE	FAT
+13.2	+7	+27	+.68	+.79	+1.09	-.19	+93	+1.28	+1.12	+0.48

Owned by Grimmus Cattle
Offering 4 IVF embryos by the \$1.3 million valued Grimmus sire Wilks Avid and stems from a dam that was the \$60,000 selection of Grimmus Cattle who is a maternal sibling to the GENEX sire Schiefelbein Top Gun 522, and who combines Prolific and the legendary former Schiefelbein donor Frosty Elba 4220 who is now working in the Rumor Has It ET program. There is tremendous power in the blood here, folks. A guarantee of 1 pregnancy if work is performed by a licensed professional. Stored at Trans Ova.

Owned by Grimmus Cattle
Offering 4 IVF sexed heifer embryos by the Grimmus Cattle sire Wilks Warrior and a dam that was the \$60,000 selection of Grimmus Cattle who is a maternal sibling to the GENEX sire Schiefelbein To Gun 522, and who combines Prolific and the legendary former Schiefelbein donor Frosty Elba 4220 who is now working in the Rumor Has It ET program. These are going to be big time powerful and good. A guarantee of 1 pregnancy if work is performed by a licensed professional. Embryos stored at Trans Ova.



Wilks Avid 4864 - Sire of Lot 4A Embryos



Wilks Warrior 3715 - Sire of Lot 4B Embryos





LOT
5

LOT
5

RHOADES BLACKBIRD 4016

Birth Date: 03-14-2024 · Cow +*20958841 · Tattoo: 4016

+*Basin Deposit 6249 #*Basin Advance 3134
 #*Basin Jameson 1076 +*Basin Lucy 4288
 20071781 *Basin Joy 9140 #*EXAR Monumental 6056B
ANGUS #Connealy Thunder +*Basin Joy 5367
 Tehama Elite Blackbird D826 #Baldrige Kaboom K243 KCF
 18317128 Tehama Elite Blackbird Z630 #Parka of Conanga 241
 #MCC Daybreak
 +Tehama Elite Blackbird T766



\$M +94
 \$W +115
 \$B +226
 \$C +387

CED	BW	WW	YW	SC	DOC	CLAW	ANGLE	PAP	HS												
+11	+1.5	+108	+178	+1.37	+27	+ .46	+ .53	+ .13	+ .26												
HP	CEM	MILK	TEAT	UDDR	FL	\$EN	CW	MARB	RE	FAT											
+15.0	+13	+30	+ .50	+ .51	+1.16	-50	+94	+1.42	+1.06	+ .025											
CED	BW	WW	YW	DMI	YH	SC	DOC	HP	CEM	MILK	MW	MH	CW	MRB	RE	FAT	TEND	CLW	ANGL	HS	PAP
21	73	1	4	96	18	19	25	4	34	40	14	15	2	5	29	58	21	31	86	7	23

Owned by Rhoades Ranches

The only female in the breed sired by the ORigen sire Basin Jameson with her unique combination of CED, WW, YW, PAP, HP, CW, Marb, RE, and \$M, that stems from the legendary dam of the deceased ABS Global sire Tehama Patriarch. Check out the massive belly and massive top this female possesses along with a great set of running gear and super feminine front end.

She sells due on 8/20/26 to True Balance.

LOT
6A

BELLE RITA I660

Birth Date: 09-17-2020 · Cow +*19935236 · Tattoo: I660

#*Connealy Confidence 0100
#*Connealy Confidence Plus
17585576 Elbanna of Conanga 1209

Connealy Tobin
Becka Gala of Conanga 8281
#*Connealy Consensus
Elbasta of Conanga 9703



ANGUS
+*G A R Oracle
+*Daltons Rita 6291
18603897 +*G A R Daybreak 82

+*G A R Prophet
+*G A R 28 Ambush N340
#MCC Daybreak
+*G A R 5050 New Design 1039

\$M +89
\$W +76
\$B +224
\$C +380

CED	BW	WW	YW	SC	DOC	CLAW	ANGLE	PAP	HS												
+6	+8	+74	+132	+1.33	+17	+40	+28	+90	+65												
HP	CEM	MILK	TEAT	UDDR	FL	\$EN	CW	MARB	RE	FAT											
+9.5	+12	+24	+51	+59	+1.08	-6	+65	+1.47	+1.28	+005											
CED	BW	WW	YW	DMI	YH	SC	DOC	HP	CEM	MILK	MW	MH	CW	MRB	RE	FAT	TEND	CLW	ANGL	HS	PAP
68	72	45	31	27	72	19	80	62	18	79	92	79	51	4	14	30	85	7	1	75	57

Owned by Rhoades Ranches

Selling an IVF flush on Belle Rita I660, a proven and productive donor valued at \$67,500 with a daughter bringing \$35,000 in the Johnson Angus Sale. This female has already validated herself through both production and market acceptance, making her one of the more reliable donors in the offering. She posts a strong +377 \$C with a balanced profile across growth, carcass, and maternal traits, giving her the ability to generate cattle that work across a wide range of programs. This is a donor that combines real-world production with genomic strength, offering buyers the opportunity to build directly from a female that has already proven her value. IVF cycle — 6 embryos guaranteed with no cap. IVF work to be performed at Lander Vet ET IVF, Turlock, CA — (209) 620-4788.

LOT
6B

GABEL X I660

3 IVF Embryos

*Bear Mtn Justice
+*Wilks Gabel
20954955 *Gabriel Rita 2556

*Bear Mtn Justify
Bear Mtn Jamie 7860
+*Woodland Centerfire
+*Wilks Rita 8470

\$M +83
\$W +79
\$B +227
\$C +378

#*Connealy Confidence Plus
+*Belle Rita I660
19935236 +*Daltons Rita 6291

#*Connealy Confidence 0100
Elbanna of Conanga 1209
+*G A R Oracle
+*G A R Daybreak 82

CED	BW	WW	YW	SC	DOC	CLAW	ANGLE	PAP	HS	
+8	+1.6	+81	+149	+1.58	+16	+44	+34	+87	+49	
HP	CEM	MILK	TEAT	UDDR	FL	\$EN	CW	MARB	RE	FAT
+13	+12	+28	+54	+59	+1.12	-28	+76	+1.35	+1.29	+028

Owned by Rhoades Ranches

Selling 3 IVF embryos sired by Wilks Gabel, the \$80,000 Grimmus selection, and out of Belle Rita I660. This mating combines a proven donor with a high-demand sire, offering a balanced genetic package with both performance and carcass merit. A strong opportunity to generate cattle that will be competitive in today's market. Selling 3 IVF embryos. Guaranteeing 1 pregnancy. Stored at Lander Vet ET IVF, Turlock, CA — (209) 620-4788.

LOT
6C

HEISMAN X I660

3 IVF Embryos

*Schiefelbein Top Gun 522
*Hoffman Heisman
21153933 Hoffman Everelda 1752

+*V A R Fire Power
Frosty Elba 4220
*TEX Scout 9001
Hoffman Everelda 8608

\$M +95
\$W +86
\$B +233
\$C +397

#*Connealy Confidence Plus
+*Belle Rita I660
19935236 +*Daltons Rita 6291

#*Connealy Confidence 0100
Elbanna of Conanga 1209
+*G A R Oracle
+*G A R Daybreak 82

CED	BW	WW	YW	SC	DOC	CLAW	ANGLE	PAP	HS	
+9	+1.3	+89	+152	+1.28	+14	+39	+34	+1.42	+73	
HP	CEM	MILK	TEAT	UDDR	FL	\$EN	CW	MARB	RE	FAT
+11.9	+13	+22	+65	+72	+1.17	-24	+79	+1.34	+1.29	-007

Owned by Rhoades Ranches

Selling 3 IVF embryos sired by Hoffman Heisman, the \$300,000 STgenetics selection, out of Belle Rita I660. This mating adds growth, power, and performance while maintaining the maternal strength of the Rita family. Designed to produce high-end herd bulls and competitive replacement females. Selling 3 IVF embryos. Guaranteeing 1 pregnancy. Stored at Lander Vet ET IVF, Turlock, CA — (209) 620-4788.



LOT
6A



LOT
6D



LOT 6D
RHOADES RITA 339
 Birth Date: 03-14-2023 · Cow **20618605 · Tattoo: 339

- *Basin Deposit 6249
- *Basin Advance 3134
- *Basin Jameson 1076
- *Basin Lucy 4288
- 20071781 *Basin Joy 9140
- *EXAR Monumental 6056B
- *Basin Joy 5367
- HOSOK #*Connealy Confidence Plus
- *Connealy Confidence 0100
- *Belle Rita 1660
- Elbanna of Conanga 1209
- 19935236 *Daltons Rita 6291
- *G A R Oracle
- *G A R Daybreak 82



\$M +104
 \$W +115
 \$B +201
 \$C +365

CED	BW	WW	YW	SC	DOC	CLAW	ANGLE	PAP	HS												
+9	+2.2	+107	+169	+81	+20	+27	+19	-.77	+48												
HP	CEM	MILK	TEAT	UDDR	FL	\$EN	CW	MARB	RE	FAT											
+8.3	+12	+26	+70	+64	+1.03	-.27	+82	+1.29	+1.01	+0.48											
CED	BW	WW	YW	DMI	YH	SC	DOC	HP	CEM	MILK	MW	MH	CW	MRB	RE	FAT	TEND	CLW	ANGL	HS	PAP
39	65	2	32	96	53	62	40	76	57	80	61	59	9	11	45	66	66	1	1	42	13

Owned By Rhoades Ranches

A direct daughter of Belle Rita 1660, this female represents the next generation of a proven donor, carrying forward the consistency and production value that has made 1660 such a reliable foundation. Sired by Basin Jameson and selling with a Rhoades Heisman 3017 calf at side, this pair offers immediate return while still maintaining long-term maternal value. This is a practical, revenue-generating female backed by a donor that has already proven her ability to produce high-value cattle.



EPF Primrose Lady M9127 - Dam of Lot 7A Embryos

LOT 7A

DOMINION X M9127

4 IVF Embryos

*Basin Jameson 1076
 +*BAR Dominion 464M
 21272338 *Ankony Miss Belle A064
 +*BNWZ Validity 2491
 +*EPF Primrose Lady M9127
 21093630 *Vintage Primrose Lady 1196

*Basin Deposit 6249
 *Basin Joy 9140
 *Connealy Clarity
 +*Ankony Miss Belle 9097
 +*HPCA Veracious
 +*RB Lady Denver 167-453
 #*GB Fireball 672
 *Vintage Primrose Lady 9355

\$M +88
 \$W +93
 \$B +249
 \$C +411

Parent Averages										
CED	BW	WW	YW	SC	DOC	CLAW	ANGLE	PAP	HS	
+12	+1.5	+92	+159	+0.87	+19	+0.36	+0.35	+0.25	+0.35	
HP	CEM	MILK	TEAT	UDDR	FL	\$EN	CW	MARB	RE	FAT
+12.5	+16	+27	+76	+71	+1.06	-35	+92	+1.5	+1.33	-0.01

Owned by Grimmius Cattle

Offering 4 IVF embryos by the \$250,000 Grimmius sire BAR Dominion and the \$240,000 top selling female in the 2025 Edisto Pines sale, EPF Primrose Lady M9127, who is one of only two females in the entire database with her combination of CED, BW, WW, YW, SC, HP, Claw, Angle, PAP, CW, Marb, RE, \$M, \$W, \$B and \$C. Talk about some monumental performance, these will be loaded with unlimited potential. A guarantee of 1 pregnancy if work is performed by a licensed professional. Embryos stored at Trans Ova.

LOT 7B

LANDMAN X M9127

4 IVF Embryos

+*BA7 Oaks Bold Ruler
 *V A R Landman 4194
 20895251 *Vintage Blackcap 1084
 +*BNWZ Validity 2491
 +*EPF Primrose Lady M9127
 21093630 *Vintage Primrose Lady 1196

#*Connealy Confidence Plus
 *Erica of Ellston T220
 #*G A R Home Town
 +*V A R Blackcap 9319
 +*HPCA Veracious
 +*RB Lady Denver 167-453
 #*GB Fireball 672
 *Vintage Primrose Lady 9355

\$M +79
 \$W +87
 \$B +240
 \$C +391

Parent Averages										
CED	BW	WW	YW	SC	DOC	CLAW	ANGLE	PAP	HS	
+10	+0.9	+87	+157	+0.73	+21	+0.45	+0.43	+1.01	+0.36	
HP	CEM	MILK	TEAT	UDDR	FL	\$EN	CW	MARB	RE	FAT
+12.5	+14	+27	+61	+69	+0.99	-28	+94	+1.3	+1.12	+0.39

Owned by Grimmius Cattle

Offering 4 IVF embryos by the \$290,000 Grimmius sire VAR Landman and the \$240,000 top selling female in the 2025 Edisto Pines sale, EPF Primrose Lady M9127, who is one of only two females in the entire database with her combination of CED, BW, WW, YW, SC, HP, Claw, Angle, PAP, CW, Marb, RE, \$M, \$W, \$B and \$C. Talk about some monumental performance, these will be loaded with unlimited potential. A guarantee of 1 pregnancy if work is performed by a licensed professional. Embryos stored at Trans Ova.



BAR Dominion 464M - Sire of Lot 7A




V A R Landman 4194 - Sire of Lot 7B



LOT
10A

STERLING ISABEL 465

Birth Date: 08-15-2024 · Cow +*21055943 · Tattoo: 465

*WAR Cavalry B063 Z044
 #*Connealy Cavalry 1149
 #*EZAR Gettysburg 1061
 War CC&7 Z044 X029
 20028170 *Paf Rita 7096
 #*Connealy Confidence Plus
 *Paf Rita 5091
 #+*Hoover No Doubt
 #*Mogck Bullseye
 #*Sterling Isabel 905
 *Miss Blackcap Ellston J2
 19930797 +*Baldrige Isabel B082
 #+*G A R Prophet
 *Baldrige Isabel Y69



\$M +51
 \$W +80
 \$B +262
 \$C +391

CED	BW	WW	YW	SC	DOC	CLAW	ANGLE	PAP	HS												
+3	+3.8	+98	+177	+.67	+29	+.56	+4.46	+4.17	+.41												
HP	CEM	MILK	TEAT	UDDR	FL	\$EN	CW	MARB	RE	FAT											
+8.5	+6	+21	+44	+50	+.98	-41	+99	+1.72	+1.03	+0.56											
CED	BW	WW	YW	DMI	YH	SC	DOC	HP	CEM	MILK	MW	MH	CW	MRB	RE	FAT	TEND	CLW	ANGL	HS	PAP
47	76	4	2	91	80	51	7	79	88	84	22	46	2	1	20	92	92	35	24	41	98

Owned by Dixie Valley


A high-end female from the Isabel (Y69) cow family, combining proven maternal strength with a balanced genomic profile. This female traces to one of the most recognizable and productive cow families in the Angus breed, known for generating cattle that excel in both performance and longevity. This mating brings together elite carcass merit and growth with the maternal consistency of the Isabel line. This is the kind of female that offers both immediate production value and long-term relevance, backed by a pedigree that has consistently produced high-quality cattle.

Bred to EXAR Bonafide, due August 23, 2026.

LOT
10B

RHOADES ISABEL 3040

Birth Date: 07-28-2023 · Cow +*20768660 · Tattoo: 3040

#*Connealy Confidence 0100
 Connealy Tobin
 #*Connealy Confidence Plus
 Becka Gala of Conanga 8281
 17585576 Elbanna of Conanga 1209
 #*Connealy Consensus
 Elbasta of Conanga 9703
 #+*Hoover No Doubt
 #*Mogck Bullseye
 #*Sterling Isabel 905
 *Miss Blackcap Ellston J2
 19930797 +*Baldrige Isabel B082
 #+*G A R Prophet
 *Baldrige Isabel Y69



\$M +83
 \$W +85
 \$B +204
 \$C +348

CED	BW	WW	YW	SC	DOC	CLAW	ANGLE	PAP	HS												
+10	+.8	+77	+138	+.05	+24	+.43	+3.33	+3.97	+.53												
HP	CEM	MILK	TEAT	UDDR	FL	\$EN	CW	MARB	RE	FAT											
+9.9	+13	+29	+50	+40	+.99	-12	+74	+1.12	+1.97	+0.43											
CED	BW	WW	YW	DMI	YH	SC	DOC	HP	CEM	MILK	MW	MH	CW	MRB	RE	FAT	TEND	CLW	ANGL	HS	PAP
12	16	35	35	67	100	95	43	40	23	35	82	91	12	11	25	72	70	22	4	52	95

Owned by Rhoades Ranch and Scott Ellis

A Confidence Plus daughter from the Isabel cow family carrying forward the consistency and production value that has made this lineage so widely recognized. This female ties directly into the same maternal base as Y69, reinforcing the strength and reliability of the Isabel line. This mating offers a balanced approach to growth, carcass merit, and maternal function. A practical, pedigree-driven female backed by one of the most dependable cow families in the breed.

She sells due 9/2026 to Rhoades Breakthrough 3046.





Sterling Isabel Y69-2 - Dam of Lot 10C Embryos

LOT 10C

WARRIOR X Y69-2

4 IVF Embryos

+*Ingram Heisman 0566
+*Wilks Warrior 3715
 20753062 +*DBA Rita 1034
 #*Styles Upgrade J59
****Sterling Isabel Y69-2**
 21045901 +Baldrige Isabel T935

#*Connealy Confidence Plus
 +*RB Lady Denver 167-453
 #*G A R Home Town
 +*Pine View Rita E093
 #*Sitz Upward 307R
 Plainview Lassie 71B
 #Baldrige Kaboom K243 KCF
 +Baldrige Isabel P4527

\$M +88
 \$W +83
 \$B +200
 \$C +346

Parent Averages

CED	BW	WW	YW	SC	DOC	CLAW	ANGLE	PAP	HS	
+3	+1.7	+81	+140	+77	+30	+38	+35	+3.09	+4.8	
HP	CEM	MILK	TEAT	UDDR	FL	\$EN	CW	MARB	RE	FAT
+11.5	+4	+28	+68	+1.07	-23	+75	+1.18	+8	+0.53	

Owned by Dixie Valley

Selling IVF embryos out of Y69-2, a clone of the legendary Baldrige Isabel Y69, one of the most influential and high-producing donors in the Angus breed. Owned by Dixie Valley Ranch, this female represents a direct opportunity to access one of the most proven maternal lines in the industry. These embryos are sired by Wilks Warrior, a standout Grimmus Genetics sire backed by the influential DBA Rita 1034, adding maternal strength and consistency to this already powerful pedigree. This mating combines elite donor power with a high-demand sire, offering a rare opportunity to generate high-value herd bulls and replacement females with immediate market appeal and long-term impact. Selling IVF eggs. Guaranteeing 1 pregnancy if transferred by a certified embryologist. Embryos located at Lander Vet ET IVF, Turlock, CA — (209) 620-4788.

LOT 10D

ARTHUR X Y69-1

4 IVF Embryos

+*Spring Cove Grant 200K
***Spring Cove Arthur 5N**
 21284306 *Spring Cove Rachel 305
 #*Styles Upgrade J59
****Sterling Isabel Y69-1**
 21045902 +Baldrige Isabel T935

*Sitz Feat 729H
 *Spring Cove Carol 811
 *SITZ Essential 731J
 *Spring Cove Rachel 075
 #*Sitz Upward 307R
 Plainview Lassie 71B
 #Baldrige Kaboom K243 KCF
 +Baldrige Isabel P4527

\$M +86
 \$W +86
 \$B +172
 \$C +309

Parent Averages

CED	BW	WW	YW	SC	DOC	CLAW	ANGLE	PAP	HS	
+4	+8	+83	+148	+1.4	+26	+41	+39	+1.24	+5.2	
HP	CEM	MILK	TEAT	UDDR	FL	\$EN	CW	MARB	RE	FAT
+14.3	+9	+30	+65	+6.2	+1.12	-35	+71	+7.2	+7.5	+0.4

Owned by Dixie Valley

4 IVF - Guaranteeing 1 pregnancy. Selling IVF embryos from Y69-1, the direct clone of the legendary Baldrige Isabel Y69 (AAA 17149410) — one of the most influential and prolific donors in the Angus breed — mated to Spring Cove Arthur 5N (AAA 21284306, the \$220,000 top-selling son of Spring Cove Grant 200K). This mating stacks the Isabel family's unmatched maternal longevity, fertility, and consistency with Arthur's elite growth, carcass merit, and strong \$C.



Wilks Warrior 3715 - Sire of Lot 10C Embryos



LOT
11

EB ERICA K4315

Birth Date: 01-09-2024 · Flush *20900357 · Tattoo: K4315

***Poss Pendleton**
20379570 *Poss Elmaretta 0605
ANGUS
+*DBL World Wide 010
***EB Erica K2325**
20339976 EB Erica V8501

#*Hoover No Doubt
#*Baldridge Isabel B061
#*Poss Maverick
Poss Elmaretta 648
+*Mohnen Worldwide 2617
+*RB Lady Upshot 02-350
#*Connealy Spur
5e 352 Expedition Lass M0142



\$M +99
\$W +82
\$B +171
\$C +321

CED	BW	WW	YW	SC	DOC	CLAW	ANGLE	PAP	HS												
+10	+7	+72	+131	+1.39	+25	+51	+35	+01	+56												
HP	CEM	MILK	TEAT	UDDR	FL	\$EN	CW	MARB	RE	FAT											
+13.0	+9	+33	+55	+57	+1.15	-11	+59	+1.06	+77	+030											
CED	BW	WW	YW	DMI	YH	SC	DOC	HP	CEM	MILK	MW	MH	CW	MRB	RE	FAT	TEND	CLW	ANGL	HS	PAP
19	36	52	43	54	50	30	40	16	58	31	91	83	46	18	61	55	7	47	3	65	20

Owned by Grimmus Cattle

Offering a flush in the top selling bred heifer in the 2026 Edgar Brothers sale, who is a flushmate sister to the \$50,000 top selling bull selected by Linz Heritage Angus in the same event. This female is near perfect in her design, super maternal looking with a near perfect udder. You can't draw one up to look any better, and then you analyze the data, elite calving ease, with plenty of growth, elite \$EN, and elite maternal traits on this one. Mate her to any high performance bull in the breed and look out, the return will pay dividends. Work to be performed at Trans Ova Genetics.

WARRIOR X K4315

4 IVF Sexed Heifer Embryos

***Wilks Warrior 3715**
20753062 *DBA Rita 1034
***Poss Pendleton**
***EB Erica K4315**
20900357 *EB Erica K2325

#*Connealy Confidence Plus
+*RB Lady Denver 167-453
#*G A R Home Town
+*Pine View Rita E093
+*Baldridge Pappy
+*Poss Elmaretta 0605
+*DBL World Wide 010
EB Erica V8501

\$M +96
\$W +86
\$B +226
\$C +388

CED	BW	WW	YW	SC	DOC	CLAW	ANGLE	PAP	HS	
+7	+1.7	+79	+139	+9.4	+26	+45	+37	+1.18	+46	
HP	CEM	MILK	TEAT	UDDR	FL	\$EN	CW	MARB	RE	FAT
+12.1	+7	+31	+63	+65	+1.12	-17	+81	+1.53	+93	+053

LOT
11B

BIGHORN X K4315

4 IVF Sexed Heifer Embryos

***Stellpflug Bighorn**
21248577 *Long Lucy 909
***Poss Pendleton**
***EB Erica K4315**
20900357 *EB Erica K2325

*Boyd Bedrock
*Ellingson Prolific
*SITZ Shauna 220H
#*Deer Valley Growth Fund
*Schafer Hickory Lucy E320
+*Baldridge Pappy
+*Poss Elmaretta 0605
+*DBL World Wide 010
EB Erica V8501

\$M +94
\$W +97
\$B +199
\$C +352

CED	BW	WW	YW	SC	DOC	CLAW	ANGLE	PAP	HS	
+11	+3	+88	+160	+9.1	+26	+51	+41	+45	+61	
HP	CEM	MILK	TEAT	UDDR	FL	\$EN	CW	MARB	RE	FAT
+12.9	+11	+33	+61	+55	+1.13	-28	+84	+91	+97	+038

Owned by Grimmus Cattle

Offering 4 IVF sexed heifer embryos by the record setting \$360,000 Stellpflug Bighorn and the top selling bred heifer in the 2026 Edgar Brothers sale, who is a flushmate sister to the \$50,000 top selling bull selected by Linz Heritage Angus in the same event. This female is near perfect in her design, super maternal looking with a near perfect udder. You can't draw one up to look any better, and then you analyze the data, elite calving ease, with plenty of growth, elite \$EN, and elite maternal traits on this one. A guarantee of 1 pregnancy if work is performed by a licensed professional. Embryos stored at Trans Ova.

Owned by Grimmus Cattle

Offering 4 IVF sexed heifer embryos by the massive made, big time performance Wilks Warrior and the top selling bred heifer in the 2026 Edgar Brothers sale, who is a flushmate sister to the \$50,000 top selling bull selected by Linz Heritage Angus in the same event. This female is near perfect in her design, super maternal looking with a near perfect udder. You can't draw one up to look any better, and then you analyze the data, elite calving ease, with plenty of growth, elite \$EN, and elite maternal traits on this one. A guarantee of 1 pregnancy if work is performed by a licensed professional. Embryos stored at Trans Ova.



EB Erica K4301 - Dam of Lot 12A & 12B Embryos

LOT 12A

AVID X K4301

4 IVF Embryos

+*FF Rito Ambitious
 +*Wilks Avid 4864
 21205732 +*DBA Rita 1034

*SEO Ultra Provider
 *RMRK Rita 0237
 #*G A R Home Town
 +*Pine View Rita E093
 #*Mill Brae Identified 4031
 *Erica of Ellston T220
 #*Connealy Spur
 5e 352 Expedition Lass M0142

\$M +94
 \$W +81
 \$B +256
 \$C +426

+*Baldrige War Cry K041
 +*EB Erica K4301
 20900348 EB Erica V8501

Parent Averages

CED	BW	WW	YW	SC	DOC	CLAW	ANGLE	PAP	HS	
+6	+2.3	+84	+145	+.53	+30	+.52	+.41	+2.86	+.32	
HP	CEM	MILK	TEAT	UDDR	FL	\$EN	CW	MARB	RE	FAT
+9.9	+9	+22	+.61	+.67	+1.13	-11	+89	+1.63	+1.08	+0.57

Owned by Grimmus Cattle

Offering 4 IVF embryos by the \$1.3 million valued Wilks Avid and the \$95,000 beautifully designed, drop-dead gorgeous WAR Cry daughter that is a direct daughter of one of the most prolific daughters in the Edgar Brothers program, 5E Erica V8501. Talk about some serious potential here, folks. This one will be super exciting. A guarantee of 1 pregnancy if work is performed by a licensed professional.

LOT 12B

BIGHORN X K4301

4 IVF Sexed Heifer Embryos

+*Boyd Bedrock
 +*Stellpflug Bighorn
 21248577 *Long Lucy 909

*Ellingson Prolific
 *SITZ Shauna 220H
 #*Deer Valley Growth Fund
 *Schafer Hickory Lucy E320
 #*Mill Brae Identified 4031
 *Erica of Ellston T220
 #*Connealy Spur
 5e 352 Expedition Lass M0142

\$M +93
 \$W +89
 \$B +217
 \$C +374

+*Baldrige War Cry K041
 +*EB Erica K4301
 20900348 EB Erica V8501

Parent Averages

CED	BW	WW	YW	SC	DOC	CLAW	ANGLE	PAP	HS	
+8	+.8	+86	+154	+.45	+28	+.51	+.4	+2.2	+.61	
HP	CEM	MILK	TEAT	UDDR	FL	\$EN	CW	MARB	RE	FAT
+11.4	+10	+28	+.67	+.62	+1.14	-22	+92	+.86	+1.08	+0.61

Owned by Grimmus Cattle

Offering 4 IVF sexed heifer embryos by the record setting \$360,000 Stellpflug Bighorn and the \$95,000 top selling bred heifer in the 2025 Edgar Brother sale, Erica K4301, who is a direct daughter of the legendary Edgar Brothers donor EB Erica V8501. The phenotype will be nothing but stellar here, folks. You can count on it. A guarantee of 1 pregnancy if work is performed by a licensed professional.



Kern Erica 321 - Dam of Lot 14 Embryos



LOT
14

AVID X 321

3 IVF Embryos

+*FF Rito Ambitious
+*Wilks Avid 4864
21205732 +*DBA Rita 1034

*SEO Ultra Provider
*RMRK Rita 0237
#*G A R Home Town
+*Pine View Rita E093
*Hoover Know How
+*Huwa 2902 Payweight 6017
#**Baldridge 38 Special
#*Erica of Ellston R96

\$M +89
\$W +94
\$B +251
\$C +414

+*Kern Erica 321
21324106 *Erica of Ellston T220

Parent Averages										
CED	BW	WW	YW	SC	DOC	CLAW	ANGLE	PAP	HS	
+9	+2.8	+99	+173	+1.12	+30	+5	+4.1	+2.42	+21	
HP	CEM	MILK	TEAT	UDDR	FL	\$EN	CW	MARB	RE	FAT
+9.9	+12	+23	+57	+61	+1.08	-28	+94	+1.67	+89	+066

Owned by Grimmius Cattle

Offering 3 IVF embryos by the legendary \$1.3 million valued Wilks Avid and the \$132,000 Kern Erica 321, who is a direct daughter of the legendary deceased multimillion-dollar producer Erica of Ellston T220, who is the dam of the Alta sire Bold Ruler. This is an awesome combination of genetics here, folks. Just think of the possibilities when you tie the two most prominent cow families in the business together, Rita 1034 and Erica T220. A guarantee of 1 pregnancy if work is performed by a licensed professional.



Erica of Ellston T220 - Deceased Granddam of Lot 14



Bold Ruler - Maternal Brother to Dam of Lot 14



Spring Cove Juana 500 - \$80,000 Donor Dam of Lot 15 Embryos

LOT
15

SPRING COVE JUANA 500

Birth Date: 01-03-2025 · Flush +*21283626 · Tattoo: 500

*Sitz Feat 729H
 **Spring Cove Grant 200K
 20669598 *Spring Cove Carol 811
 ANGUS
 #*Musgrave 316 Stunner
 Musgrave Juana Erica 278
 19176223 Musgrave Juana Erica 1176

#*Sitz Accomplishment 720F
 *Sitz Sitz Forever Lady 12F
 #*Spring Cove Reno 4021
 *Spring Cove Carol 655
 #+*LD Capitalist 316
 #MCATL Blackbird 831-1378
 #*Musgrave Big Sky
 #MCATL Jaunty 410-976

\$M +106
 \$W +80
 \$B +172
 \$C +329



CED	BW	WW	YW	SC	DOC	CLAW	ANGLE	PAP	HS												
+3	+2.4	+80	+136	+1.66	+23	+3.6	+4.8	+4.4	+.57												
HP	CEM	MILK	TEAT	UDDR	FL	\$EN	CW	MARB	RE	FAT											
+14.7	+2	+25	+75	+61	+1.20	-12	+67	+79	+92	+.042											
CED	BW	WW	YW	DMI	YH	SC	DOC	HP	CEM	MILK	MW	MH	CW	MRB	RE	FAT	TEND	CLW	ANGL	HS	PAP
54	68	15	26	68	46	23	26	18	79	68	61	81	30	44	30	85	70	15	78	67	30

Owned by Rhoades Ranches

IVF cycle — 6 embryos guaranteed with no cap. Selling an IVF flush on Spring Cove Juana 500, a young and promising donor that combines a progressive genomic profile with a pedigree backed by proven maternal strength. Sired by Grant and out of the Juana Erica cow family, this female represents a blend of performance, fertility, and long-term productivity. She posts an impressive +107 \$M and +330 \$C, highlighting her ability to contribute both maternal value and end-product merit. This kind of balance positions her as a versatile donor capable of producing cattle that fit both seedstock and commercial operations. The Juana Erica lineage has been recognized for consistency and functionality, and 500 carries that forward with a modern data set that supports real-world usability. As a younger donor, she offers significant upside and the opportunity to build ahead of the curve with genetics that are still early in their production cycle. This is a forward-looking donor option that combines pedigree strength, genomic value, and long-term potential, giving buyers the chance to invest in a female with both immediate mating flexibility and future impact. IVF work to be performed at Lander Vet ET IVF, Turlock, CA — (209) 620-4788.



LOT
16

LOT
16

RHOADES BARBARA 4701

Birth Date: 08-26-2024 · Cow *21217197 · Tattoo: 4701

#*Tehama Patriarch F028
 *Virginia Tech Statesman
 20085208 +*Vpi 310A Rita 9G6 Et
 ANGUS
 #*Connealy Confidence Plus
 *Pohlman Barbara 8178
 19091783 Pohlman Barbara 6861

#*S S Niagara Z29
 Tehama Elite Blackbird D826
 #*Ellingson Homestead 6030
 AED Rita 310A
 #*Connealy Confidence 0100
 Elbanna of Conanga 1209
 #*Connealy Black Granite
 Pohlman Barbara 483 13

\$M +75
 \$W +81
 \$B +214
 \$C +353



CED	BW	WW	YW	SC	DOC	CLAW	ANGLE	PAP	HS												
+9	-.2	+76	+134	+.47	+10	+39	+35	+1.01	+.56												
HP	CEM	MILK	TEAT	UDDR	FL	\$EN	CW	MARB	RE	FAT											
+13.7	+9	+28	+59	+45	+1.00	-22	+72	+1.10	+1.10	+.012											
CED	BW	WW	YW	DMI	YH	SC	DOC	HP	CEM	MILK	MW	MH	CW	MRB	RE	FAT	TEND	CLW	ANGL	HS	PAP
13	7	70	65	32	78	28	87	18	46	36	84	64	55	17	20	62	25	4	3	60	55

Owned by Rhoades Ranch

She is a maternal sister to PCC Horizon, one of the more recognized and influential sires to come from this cow family, adding immediate credibility and reinforcing the consistency behind this lineage. This is a cow family known for producing cattle that work in both seedstock and commercial environments with an emphasis on usability and longevity. Genomically, she offers a balanced profile across growth, carcass, and maternal traits, making her a versatile breeding piece that can be mated in multiple directions depending on program goals. This mating aligns well with her strengths, adding additional carcass merit and performance while maintaining maternal function and structural soundness.

Sells due to calve 8/3/26 to Basin Keystone.



RSA Blackbird Elite 4234 - Dam of Lot 17 Embryos



LOT
18

LOT
17A

AFFIRMED X 4234

3 IVF Sexed Heifer Embryos

+*Poss Ratified
+*Pine View Affirmed
20642098 +*Pine View Rita J61

+*Poss Rawhide
#*Poss Rita 5116
+*Baldrige Pappy
+*G A R Sure Fire 187
+*Basin Deposit 6249
+*Basin Joy 9140
+*Schafer Harley 49er
+*Schafer Niagara Jackie G460

\$M +109
\$W +104
\$B +237
\$C +416

*Basin Jameson 1076
*RSA Blackbird Elite 4234
21309750 *RSA Blackbird Elite 1402

Parent Averages

CED	BW	WW	YW	SC	DOC	CLAW	ANGLE	PAP	HS	
+10	+8	+93	+148	+.55	+22	+.51	+.46	+1.74	+.36	
HP	CEM	MILK	TEAT	UDDR	FL	\$EN	CW	MARB	RE	FAT
+13.3	+14	+27	+87	+82	+1.15	-20	+79	+1.71	+1.31	+0.27

Owned by Dixie Valley

Selling 3 IVF female sexed embryos out of the elite Blackbird donor 4234, one of the highest \$C females in the offering at +446. This female represents a powerful combination of genomic strength and proven maternal backing, making her a cornerstone type donor within the program. Sired by Pine View Affirmed, a Grimmus Genetics sire, this mating is designed to produce females with longevity, fertility, and real-world usability. Affirmed offers a balanced profile of calving ease, growth, and maternal function, aligning perfectly with the strength of the 4234 donor. This mating stacks maternal strength on both sides of the pedigree, creating a high-probability opportunity to generate elite replacement females that can anchor a program for years to come. Selling IVF reverse-sort female embryos (~90% heifers). Guaranteeing one pregnancy if transferred by a certified embryologist. Embryos stored at Cross Country Genetics, KS — (785) 457-3336.

LOT
17B

WARRIOR X 4234

3 IVF Reverse sorted Heifer Embryos

+*Ingram Heisman 0566
+*Wilks Warrior 3715
20753062 +*DBA Rita 1034

#*Connealy Confidence Plus
+*RB Lady Denver 167-453
#*G A R Home Town
+*Pine View Rita E093
+*Basin Deposit 6249
+*Basin Joy 9140
+*Schafer Harley 49er
+*Schafer Niagara Jackie G460

\$M +101
\$W +99
\$B +268
\$C +448

*Basin Jameson 1076
*RSA Blackbird Elite 4234
21309750 *RSA Blackbird Elite 1402

Parent Averages

CED	BW	WW	YW	SC	DOC	CLAW	ANGLE	PAP	HS	
+7	+2.1	+94	+154	+.61	+25	+.44	+.41	+2.56	+.35	
HP	CEM	MILK	TEAT	UDDR	FL	\$EN	CW	MARB	RE	FAT
+12.1	+9	+28	+81	+77	+1.13	-26	+94	+1.99	+1.35	+0.29

LOT
18

STERLING BLACKCAP 531

Birth Date: 03-09-2025 · Cow *21253065 · Tattoo: 531

+*Pine View Warbucks L114
20638633 *Pine View Susanna F439

ANGUS
#*GB Fireball 672
+*PV/CAM Blackcap H346
20054328 *Mill Brae CP Blackcap 7139

#*Tehama Patriarch F028
HAYNES Elite Lass 452 8247
+*SS Samson C4701
+*Pine View Susanna D421
+*G A R Sure Fire 6404
*GB Anticipation 432
#*Connealy Confidence Plus
#Mill Brae Obj Blackcap 9244

\$M +80
\$W +72
\$B +225
\$C +372

CED	BW	WW	YW	SC	DOC	CLAW	ANGLE	PAP	HS	
+2	+3.6	+86	+159	+1.49	+31	+.48	+.41	+.84	+.15	
HP	CEM	MILK	TEAT	UDDR	FL	\$EN	CW	MARB	RE	FAT
+15.6	+11	+26	+59	+50	+1.10	-41	+80	+1.44	+1.14	+0.21

Owned by Dixie Valley

A sharp, well-balanced female out of H346, offered as a natural calf from a proven and highly productive cow family known for consistency, structural integrity, and long-term value. She is backed by real-world validation with a full brother selling for \$30,000, reinforcing the market acceptance and earning power behind this mating. Genomically, she offers a strong and balanced profile, highlighted by +81 \$M and +373 \$C, along with elite carcass merit including +1.45 Marb and +1.14 RE, giving her the ability to add both maternal strength and end-product value. A clean-made, hard-to-fault female backed by a proven cow family and supported by both pedigree strength and performance.

Sells Open ready to breed or flush.

Owned by Dixie Valley

Selling 3 IVF female sexed embryos out of the elite Blackbird donor 4234 (+446 \$C) mated to Wilks Warrior, one of the standout young Grimmus Genetics sires. Warrior is backed by the influential DBA Rita 1034, bringing added maternal strength, consistency, and proven production to this mating. Combined with the genomic power and cow family strength of 4234, this represents a cutting-edge genetic package designed for both performance and long-term maternal impact. Selling IVF reverse-sort female embryos (~90% heifers). Guaranteeing one pregnancy if transferred by a certified embryologist. Embryos stored at Cross Country Genetics, KS — (785) 457-3336.

LOT
19A

WILKS AVID 4864

[AMF-CAF-D3F-DDF-MIF-NHF-OHF-OSF-RDF]

Birth Date: 11-03-2024 · Semen +*21205732 · Tattoo: 4864

+*FF Rito Ambitious
20437882 *RMRK Rita 0237

+*G A R Momentum K836
+*Chair Rock Progress 3023
*Thomas Edison 6764



ANGUS
+*DBA Rita 1034
20148616 +*Pine View Rita E093

+*RMRK Rita 8232
#*G A R Ashland
+*Chair Rock Sure Fire 6095
#*Mill Brae Identified 4031
+*G A R Prophet 1463

\$M +90
\$W +95
\$B +306
\$C +487

CED	BW	WW	YW	SC	DOC	CLAW	ANGLE	PAP	HS												
+8	+2.9	+100	+170	+1.60	+30	+0.53	+0.48	+2.20	+0.07												
HP	CEM	MILK	TEAT	UDDR	FL	\$EN	CW	MARB	RE	FAT											
+9.8	+10	+21	+0.55	+0.64	+1.08	-22	+103	+2.30	+1.17	+0.39											
CED	BW	WW	YW	DMI	YH	SC	DOC	HP	CEM	MILK	MW	MH	CW	MRB	RE	FAT	TEND	CLW	ANGL	HS	PAP
64	78	11	7	67	61	33	8	53	51	84	40	53	1	1	8	54	94	52	38	2	63

1 Unit

LOT
19B

WILKS AVID 4864

[AMF-CAF-D3F-DDF-MIF-NHF-OHF-OSF-RDF]

Birth Date: 11-03-2024 · Semen +*21205732 · Tattoo: 4864

1 Unit

LOT
19C

WILKS AVID 4864

[AMF-CAF-D3F-DDF-MIF-NHF-OHF-OSF-RDF]

Birth Date: 11-03-2024 · Semen +*21205732 · Tattoo: 4864

1 Unit

LOT
19D

WILKS AVID 4864

[AMF-CAF-D3F-DDF-MIF-NHF-OHF-OSF-RDF]

Birth Date: 11-03-2024 · Semen +*21205732 · Tattoo: 4864

1 Unit

LOT
19E

WILKS AVID 4864

[AMF-CAF-D3F-DDF-MIF-NHF-OHF-OSF-RDF]

Birth Date: 11-03-2024 · Semen +*21205732 · Tattoo: 4864

1 Unit

LOT
19F

WILKS AVID 4864

[AMF-CAF-D3F-DDF-MIF-NHF-OHF-OSF-RDF]

Birth Date: 11-03-2024 · Semen +*21205732 · Tattoo: 4864

1 Unit

LOT
19G

WILKS AVID 4864

[AMF-CAF-D3F-DDF-MIF-NHF-OHF-OSF-RDF]

Birth Date: 11-03-2024 · Semen +*21205732 · Tattoo: 4864

1 Unit

LOT
19H

WILKS AVID 4864

[AMF-CAF-D3F-DDF-MIF-NHF-OHF-OSF-RDF]

Birth Date: 11-03-2024 · Semen +*21205732 · Tattoo: 4864

1 Unit

LOT
19I

WILKS AVID 4864

[AMF-CAF-D3F-DDF-MIF-NHF-OHF-OSF-RDF]

Birth Date: 11-03-2024 · Semen +*21205732 · Tattoo: 4864

1 Unit

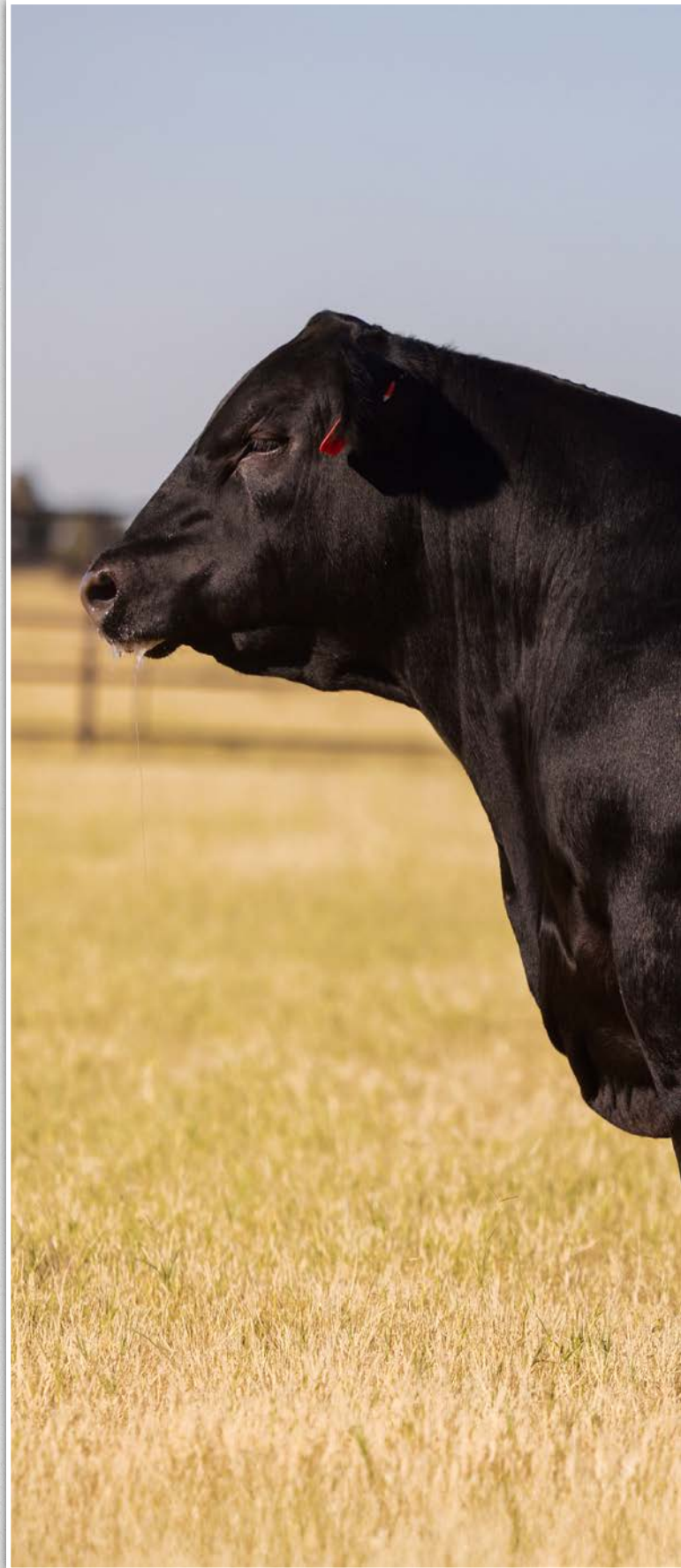
LOT
19J

WILKS AVID 4864

[AMF-CAF-D3F-DDF-MIF-NHF-OHF-OSF-RDF]

Birth Date: 11-03-2024 · Semen +*21205732 · Tattoo: 4864

1 Unit



LAST SEMEN TO SELL UNTIL FALL



Wilks Avid 4864 - Semen




Swigart


MG Magnitude - Semen



LOT **20A** **MG MAGNITUDE** [AMF-CAF-DZF-DDF-MIF-NHF-OHF-OSF-RDF]
 Birth Date: 01-24-2019 · Semen *19467117 · Tattoo: 14G

#*Connealy Capitalist 028 #*S A V Final Answer 0035
 #**Deer Valley Patriot 3222 Prides Pita of Conanga 8821
 17577916 #*Deer Valley Rita 0274 #*Sitz Upward 307R
 #*HAYNES Outright 452 *G A R Objective 2345
 #*K C F Bennett Absolute
 MG Erroline 8E HAYNES ND 454 Miss 179
 18860423 M A G Erroline 1B #*Hoover Dam
 M A G Erroline 4Y

\$M	+71
\$W	+75
\$B	+263
\$C	+412



CED	BW	WW	YW	SC	DOC	CLAW	ANGLE	PAP	HS												
+16	-1.2	+75	+134	+34	+21	+47	+50	-1.76	+84												
HP	CEM	MILK	TEAT	UDDR	FL	\$EN	CW	MARB	RE	FAT											
+12.7	+15	+26	+77	+86	+1.05	-31	+92	+1.61	+1.48	-.025											
CED	BW	WW	YW	DMI	YH	SC	DOC	HP	CEM	MILK	MW	MH	CW	MRB	RE	FAT	TEND	CLW	ANGL	HS	PAP
37	57	15	8	97	15	75	48	29	31	68	10	21	1	15	1	5	79	41	43	89	7

1 Unit
 LOT **20B** **MG MAGNITUDE** [AMF-CAF-DZF-DDF-MIF-NHF-OHF-OSF-RDF]
 Birth Date: 01-24-2019 · Semen *19467117 · Tattoo: 14G

1 Unit



Parker Friedrich Marketing and Consulting
566 Hillcrest Dr.
Stephenville, TX 76401
(254) 413-2420 mob (254) 968-8162 fax/home
parkerfriedrich@earthlink.net

PRSR
FIRST-CLASS
U.S. POSTAGE
PAID
St. Joseph, MO
Permit #2017



CALIFORNIA DERBY DAYS

MAY 2, 2026 ♦ 2 PM PDT ♦

