



Deer Valley Farm *Spring Cow Sale*

5pm on Friday, May 1st 2026

**At the Deer Valley Farm Sale Facility
in Fayetteville, TN**

2026 Deer Valley Farm Spring Cow Sale

5^{PM} Friday, May 1st 2026

Welcome to our annual Spring Female Sale, we appreciate your interest in our program and hope you can join us for this exciting event. Once again we have assembled a great set of females for your appraisal and feel that you will be impressed when you get an opportunity to go through the cattle. Spring is here, grass is coming on strong and the cattle market is roaring at a phenomenal pace. Never before has there been as much optimism in the industry we all love and have devoted our lives to. The demand for our product in the consumer world has never been greater and those of us that service that demand are in a pretty enviable spot for a change. The thing we must remember though, the demand is there because of the quality and consistency we have created in the product they so adore. We can't forget that detail, we must continue to make it better every day and strive for more quality and consistency in it every day. That starts at the Seedstock producers level and it is up to us to continue to create genetics for our customers that enable them to progress with leaps and bounds with every generation they turn.

That is exactly our approach at Deer Valley, we strive to make major improvement with every new calf crop we produce. We work hard to maintain proven, predictable family lines while pushing the envelope for genetic improvement with the young sires and females that we move forward with to create the next generation. It is fun to live through and exciting to watch, as we try to raise the bar every day with the expectations of what we are producing. This offering should exhibit exactly what we have put in motion and it makes us proud to see what they have achieved. From the proven donors that sell, to the exciting young bred heifers, you can see the proven predictability as well as the calculated progress from generation to generation. This offering is a great representation of our philosophies and of our program from end to end.

The five year old cows are solid as a rock. They have done their job for us and have proven to be rock solid and problem free. At this point, they have all made a fairly sizable contribution to the program and have left us replacements to move forward with, while still having many productive years left in them to go home and impact your program. They are bred to the freshest young sires in the business and will definitely add value to the breeder that takes them home. Several of them have served as donors and have done a tremendous job. The bred heifers cover the program fairly well. They are the mates to many of the high selling bulls we sold here a few weeks ago in the spring bull sale, they are solid and poised to create some serious value to the new owner.

Please join us on May 1st at 5:00 PM as we put them on display for your appraisal, you will not be sorry you came. If we can help you in any way beforehand please feel free to reach out. If not, we look forward to seeing you here at the sale.

Sincerely,
Jonathan Perry
Deer Valley Farm



The Clark Family



Fred & Phyllis Clark



Fred Clark & Alex Vaughn



Jackie, Alli, & Jonathan (JP) Perry with
Brewer & Zach Bailey

**PLEASE NOTE: The sale is NOT at the location of our Main Office
Address for Sale Facility: 62 Pitts Bend Rd, Fayetteville, TN 37334**

AUCTIONEER:



Steve Dorran

SALE MANAGED BY:



Larry Cotton 517-294-0777
 Ryan Cotton 706-206-8361
 Mike Gothard 540-894-1055
 Jerry Crenshaw 703-244-4767
 Zach Hileman 540-460-2776
www.cotton-associates.com

LIVESTOCK PUBLICATION REPRESENTATIVES:

Alex Tolbert, *Angus Journal*
 Chuck Grove, *Special Assignment*
 Kent Jaecke, *Special Assignment*
 Shane Ryan, *Special Assignment*



Visit the **Angus Journal**® web site:
www.angusjournal.com, and view this sale book online.
 References: American Angus Association®, AHIR®, CAB®,
 Pathfinder®, AHIR®
 EPDs current as of 4/10/26. Updated EPDs can be viewed
 online at www.angus.org

VIEW & BID LIVE, ONLINE:



Bid Live Online
www.CCI.live - Watch the Sale

(405) 400-9505 Text/Call - schedule@cci.live
 Find us on the App Store and Google Play
 Over 35 years in livestock marketing!

SCHEDULE OF EVENTS:

FRIDAY - May 1st

All Day Cattle on Display
 4:00^{pm} Food Served
 5:00^{pm} Sale Starts

SATURDAY - May 2nd

Tennessee River Music
 Dixieland Delight Sale
 Ft Payne, AL

SALE DAY PHONES:

Jonathan Perry 931-703-6330
Bryan Ishmael 606-748-1620
Melissa Crouch 601-513-4918
 (Office)

SALE ACCOMMODATIONS:

Hampton Inn-Fayetteville
 931/433-3355

Best Western-Fayetteville
 931/433-0100

Days Inn-Fayetteville
 931/433-6121

Super 8-Fayetteville Exit at I-65
 931/363-4501

Embassy Suites - Huntsville, AL (Approx. 35 miles)
 256/539-7373

TRANSPORTATION:

The Huntsville, AL International Airport is approximately 45 minutes away. The Nashville International Airport is approximately one hour away. Fayetteville has a small airport for private landings, call for more information or to arrange transportation from the Fayetteville Airport.

TERMS AND CONDITIONS:

Cattle will sell under the suggested Terms & Conditions of the American Angus Association web site: http://www.angus.org/Pub/suggested_sale_terms.pdf

EPDS:

All EPDs are current as of 4/10/2026. Updated EPDs can be viewed at www.angus.org.

HERD HEALTH:

All cattle will be accompanied by proper health certificates for immediate interstate shipment.

ANNOUNCEMENTS:

A supplemental update sheet will be available sale day with up-to-date breeding and calving information. All announcements made from the auction block take precedence over printed matter in this sale book.

LIVESTOCK INSURANCE:

May be purchased at the clerk's desk.

TRUCKING:

Delivery is at the expense of the buyer. Deer Valley will help arrange delivery in order to assist in achieving cost-efficient hauling for our customers.



Owners: The Fred Clark Family
 Fred Clark Lane • Fayetteville, TN 37334
 Jonathan Perry, General Manager — Cell: 931/703-6330
 Office: 931/433-1895 • Fax: 931/433-0730
 Email: Jonathan.Perry@jpperry@deervalleyfarm.com



The History of Dr. Fredric H. Clark

“Rocket Scientist turned Cattle Farmer” – That’s not a story you hear every day, but that’s exactly the path that Dr. Fredric H. Clark took to end up where he is now. Born in a sleepy little town in northeast Arkansas, Fred grew up as the middle child of three to a single mother and school teacher who struggled to raise her children to be the hard-working, highly-valued individuals they became. Times were tough and things didn’t come easy, but they had all they needed. Fred’s father, who served under Gen. George Patton in the Third Army during WWII, was a victim of PTSD and disappeared after his return from the war. His Uncle Toby, a farmer in Arkansas, would become his mentor. Fred spent his evenings, weekends, and summers following Uncle Toby, learning the ways of farming and developing an undeniable love for the land. This is where Fred’s passion for agriculture was born.

When Fred was in 8th grade, Russia launched the first manned spacecraft that orbited the earth. He recalls the words of cosmonaut Yuri Gagarin, “I have just proven that there is no God; I have circled through Heaven and I didn’t see him.” Because of his strong Christian faith and his belief in American ingenuity, this event had a major influence on Fred’s life. It was then that he decided he was going to be an Electrical Engineer and work in the U.S. Space Program. He received his Bachelor’s of Science Degree from the University of Arkansas, followed by his Masters and Doctoral (Ph.D.) Degrees from the University of Alabama in Huntsville, all in electrical engineering.

Fresh out of college, Fred did indeed join the U.S. Space team working for the IBM Corporation, just after the fire that killed the Apollo 1 astronauts White, Chaffee, and Grissom. He continued his Rocket Scientist role through the rest of the Apollo and Saturn Programs, including all of the moon landings and the Skylab program. While still working for IBM, he worked on upgrades to the B-52 aircraft, the radar for the Tomahawk Cruise Missile, and a special cruise missile that was the first design used in combat during the Vietnam War.

When IBM phased out of the Huntsville, Alabama area, Dr. Clark was offered a promotion and the opportunity to move anywhere that IBM had a permanent location. Fred declined that offer as he had grown to love the Huntsville area, and he was raising two young children and believed the area to be their permanent home. Since family is so important to Fred, which is as evident today as it was then, he and a partner decided to use their many years of experience and contacts in the area to launch a new company. The company would be called CAS, Inc., specializing in the design of radar and missile systems.

Over the next 27 years, CAS grew to over 1000 employees with annual revenue exceeding \$250,000,000. CAS applied their expertise to many programs including the PATRIOT Air Defense System, the HAWK Air Defense System, the THAAD Air Defense System, the Apache Helicopter Program, the Blackhawk Helicopter Program, the UAV Program and numerous other short-range missile and radar programs.

In 2006, Dr. Clark and his partner sold CAS. As a condition of the sale, Fred agreed not to practice his engineering skills anywhere in the world for seven years. Not willing to sit idle, Fred decided to focus his efforts on growing his farm and enjoying more time with his family. The Clarks sold their Alabama home and made Deer Valley Farm their permanent residence, returning Fred to his childhood farming roots.

The Dean of The College of Engineering at the University of Arkansas would later tell his good friend Dr. Clark, “Fred, you are the only Ph.D Rocket Scientist turned farmer/rancher that we know”.



The History of Deer Valley Farm

“As with most operations, Deer Valley Farm has seen many transitions and changes as it has evolved into the thriving operation that it is today. Few would have envisioned our look today when, in 1988, Fred Clark purchased a tract of land in a beautiful valley nestled in the hills of Tennessee, primarily for recreation and hunting. As time passed and he continued to amass land, a commercial herd was started to utilize the grass that grew on the valley’s rolling hills. As with most of Fred Clark’s ventures, it wasn’t enough just to own cattle; he wanted to own elite cattle. “It costs the same to feed a great one as it does to feed an average one,” he was known to say, and his philosophy then has not changed today. This mindset led him to start an elite Limousin program that grew to great proportions.

At the time of Deer Valley’s inception, most of the value in the Limousin breed was established in the show ring; so, we built a herd that had the ability to compete there. We were fortunate enough to win many shows around the country, and at one time had as many as 5 National Champions walking the pastures at the same time. Deer Valley exhibited the National Champion Carload in Denver and raised and sold many females that won several major shows across the country.

As the luster of the show ring wore off and the landscape of the business became more production-oriented, it became apparent that to create a sustainable operation with the ability to cash flow year in and year out, a change needed to be made. As we looked around at what was happening in the cattle industry, we quickly realized that our competition wasn’t other breeders in the Limousin breed, but another breed that was very progressive and taking over the countryside one operation at a time: the Angus breed. It was apparent that the power of a black hide was becoming more and more important. No matter what each breed did to change its color, it always came back to a comparison of them versus Angus. That made for an easy decision at Deer Valley – join the number one breed in the industry or become irrelevant. In 2005, we began that transition.

Today we run close to 2500 head of the most progressive Angus cattle that can be found in the breed. Deer Valley is home to some of the most prominent donor females in the breed and one of the most progressive young herd sire batteries in the business. Today Fred Clark’s saying still rings true, “It costs the same to feed a great one as it does to feed an average one.”

Deer Valley Farm is a fully integrated operation that is fortunate enough to grow and harvest the majority of everything we feed. We operate on approximately 5500 acres of land, and we farm hay, corn, and soybeans on 1500 to 2000 acres of it. With primarily river bottomland, we utilize minimal till and rotational farming practices to improve the land and minimize erosion and topsoil loss.

We have positioned our program around raising commercial bulls for the progressive commercial producer, and we have always believed that the success of a breeding program lies in the depth of their cow power and the strength of their cow families. For this reason, you will continue to see Deer Valley searching for that next great individual that we consider a “breed changer”. Our mission is to raise superior seed stock that are outstanding in every segment of the industry.

We are certain that just as we have seen many twists and turns up to this point, we are sure to see many more. We plan to take them head on and continue to approach each situation with a long-term outlook and a vision toward the future.

Deer Valley Rita 1837 - Lot 1





Deer Valley Rita 1837

[DVF-DOB-IMP-IMP-IMP-IMP]

DOB: 10-10-2021 Cow Reg: +*20242114 Tattoo: 1837

#+*G A R Ashland
#*G A R HOME TOWN
 19266718 +*Chair Rock Sure Fire 6095
 #+*Baldridge Colonel C251
+*DEER VALLEY RITA 87120
 19469703 +*Deer Valley Rita 36142

*G A R Early Bird
 +*Chair Rock Ambush 1018
 #+*G A R Sure Fire
 +*Chair Rock Progress 3005
 #+baldridge Xpand x743
 *Baldridge Isabel Y69
 #*Plattmeyer Weigh Up K360
 +Deer Valley Rita 9457



CED	BW	WW	YW	RADG	DMI	YH	SC	DOC	PAP	
+5	+1.3	+62	+127	+35	+87	+3	+70	+20	-3.54	
CLAW	ANGLE	HP	CEM	Milk	MW	MH	CW	MRB	RE	FAT
+0.39	+4.2	+10.9	+8	+34	+59	+4	+63	+91	+1.29	-.024
SM	SW	SF	SG	SB	SC					
+72	+65	+131	+76	+208	+342					

- ★ Rita 1837 is a proven member of the Deer Valley Farm donor program and is a PAP and RE daughter of the proven multi-trait female sire Home Town, and stems from a fourth-generation Deer Valley donor Rita 87120.
- ★ Rita 1837 stems from the same family that produced the breed registration leader Growth Fund and Select Sires roster member Wall Street, and records ultrasound ratios IMF 3@101 and REA 3@117. The dam of Lot 1 posts a WR 3@101 and a YR 2@110 while carrying ultrasound ratios IMF 5@112 and REA 5@108.
- ★ **Has a 4/15/26 bull calf, Lot 1AA, by GAR Wallace, tattoo 6414.**

Deer Valley Rita 46101 - Lot 1A





LA Deer Valley Rita 46101
 DVF DOB: 08-20-2024 Cow Reg: +*21044014 Tattoo: 46101

#*Sitz Resilient 10208 #*Sitz Stellar 726D
 *CONNEALY CRAFTSMAN #*Sitz Miss Burgess 1856
 20132505 #*Black Cathy of Conanga 8521 *Connealy Niobrara 5451
 Black Carla of Conanga 450
 #*G A R Home Town #+*G A R Ashland
 +*DEER VALLEY RITA 1837 +*Chair Rock Sure Fire 6095
 20242114 +*Deer Valley Rita 87120 #+*Baldrige Colonel C251
 +*Deer Valley Rita 36142



CED	BW	WW	YW	RADG	DMI	YH	SC	DOC	PAP	
-7	+5.0	+83	+148	+30	+1.76	+9	+1.54	+19	-.63	
CLAW	ANGLE	HP	CEM	Milk	MW	MH	CW	MRB	RE	FAT
+0.36	+0.45	+11.0	-2	+38	+61	+9	+79	+92	+1.19	+0.22
SM	SW	SF	SG	SB	SC					
+72	+86	+128	+72	+200	+331					

- ★ Rita 46101 is a powerful PAP and RE daughter of the proven donor selling as Lot 1, Rita 1837, sired by the record-selling feature of the ST Genetics and Select Sires rosters, Craftsman.
- ★ Rita 46101 records a weaning ratio of 113 while showing an ultrasound REA ratio of 120.
- ★ Due 9/4/26 to Antczak Pathway.

Deer Valley Blackbird 4238 - Lot 2



2 Deer Valley Blackbird 4238
 DOB: 02-09-2024 Cow Reg: *20968494 Tattoo: 4238

#+*Tehama Tahoe B767
 *LONG TETON 107
 20274029 *Long Lucy 909

*Tehama Upward Y238
 +*Tehama Mary Blackbird Y684
 #+*Deer Valley Growth Fund
 *Schafer Hickory Lucy E320



*Connealy Common Ground
 *DEER VALLEY BLACKBIRD 2301
 20319304 *PF Blackbird 91226

#K C F Bennett Homestead
 *Jayzee of Conanga 85P
 #+*TEX Playbook 5437
 Deer Valley Blackbird 4311

CED	BW	WW	YW	RADG	DMI	YH	SC	DOC	PAP	
+8	+1.7	+95	+173	+.37	+1.80	+.7	+.63	+22	+2.50	
CLAW	ANGLE	HP	CEM	Milk	MW	MH	CW	MRB	RE	FAT
+48	+40	+8.5	+8	+25	+119	+1.0	+84	+78	+99	+008
HDSOK		SM	SW	SF	SG	SB	SC			
		+57	+89	+138	+64	+202	+319			

- ★ Blackbird 4238 is a growth prospect produced by a first calf heifer in the Deer Valley program, Blackbird 2301, and is sired by the proven multi-trait leader Teton 107.
- ★ Blackbird 4238 was produced by a first calf heifer and posts a weaning ratio of 102 while carrying an ultrasound REA ratio of 104. Blackbird 2301, the dam of Lot 2, is a daughter of the proven Deer Valley sire Common Ground, and stems from a proven and productive daughter of the \$M and phenotype sire Playbook.
- ★ Due 8/13/26 to Boyd Cast Iron.

Deer Valley Rita 41140 - Lot 3



3 DF **Deer Valley Rita 41140**
 DOB: 01-29-2024 Cow Reg: +*20899639 Tattoo: 41140

+*G A R Sunbeam
***CONNEALY COMMERCE**
 20132642 *Avira of Conanga 814R
 #*G A R Home Town
+*DEER VALLEY RITA 11209
 20059937 +*Deer Valley Rita 5503

#+*G A R Sunrise
 *G A R Ingenuity 3132
 +*Connealy Cade
 *Avie of Conanga 624P
 #+*G A R Ashland
 +*Chair Rock Sure Fire 6095
 #+*G A R Prophet
 +*G A R Progress 830



- ★ Rita 41140 is a sensational low-birth, PAP, Marb. and RE daughter of the third-generation Deer Valley donor, Rita 11209, sired by the proven leader of the ST Genetics roster, Commerce.
- ★ Rita 41140 records a birth ratio of 97, a weaning ratio of 116, and a yearling ratio of 102 while showing an ultrasound REA ratio of 126. The dam of Lot 3 is a daughter of the foundation Rita in the Jac's Ranch program, Rita 5503, sired by the multi-trait female sire Home Town. The dam of Lot 3 posts a WR 1@102 and a YR 1@101 while carrying ultrasound ratios IMF 3@114 and REA 3@114.
- ★ Due 9/3/26 to Basin Jameson 1076.

CED	BW	WW	YW	RADG	DMI	YH	SC	DOC	PAP	
+13	+3	+76	+133	+.23	+1.90	+.5	+1.75	+17	-3.22	
CLAW	ANGLE	HP	CEM	Milk	MW	MH	CW	MRB	RE	FAT
+45	+44	+6.0	+18	+31	+60	+5	+70	+1.15	+1.50	-.020
HDSOK		SM	SW	SF	SG	SB	SC			
		+63	+86	+111	+90	+202	+325			

Deer Valley Rita 4652 - Lot 4





4 Deer Valley Rita 4652
DOB: 08-13-2024 Cow Reg: *21045124 Tattoo: 4652

#*Mill Brae Identified 4031 #*Koupals B&B Identity
 +*BALDRIDGE HEAT SEEKER H925 *Mill Brae Pro Blackcap 1092
 19806485 +*Baldrige Isabel E048 #*Connealy Confidence Plus
 #*Baldrige Isabel Y69
 *E W A Teamwork 821 #*E W A Peyton 642
 +*OAKDALE RITA 821 0206 *E W A 543 of 117 Weigh Up
 19976292 +*E W A 804 of 3128 Elation #*Hoover Elation M123
 +*E W A 3128 of 9067 Weigh Up



CED	BW	WW	YW	RADG	DMI	YH	SC	DOC	PAP	
+9	+7	+77	+144	+35	+1.30	+7	+1.23	+13	+1.99	
CLAW	ANGLE	HP	CEM	Milk	MW	MH	CW	MRB	RE	FAT
+4.6	+4.1	+11.9	+3	+29	+88	+9	+94	+1.39	+1.15	+0.85
HDSOK		SM	SW	SF	SG	SB	SC			
		+57	+77	+165	+90	+255	+388			

- ★ Rita 4652 is a calving-ease, Marb., RE, \$B, and \$C daughter of the proven leader of the Deer Valley embryo program, Rita 821 0206, and sired by the proven genomic leader of the ST Genetics roster, Heat Seeker.
- ★ Rita 4652 posts a birth ratio of 93 and a weaning ratio of 103 while showing ultrasound ratios IMF 125 and REA 108. Rita 821 0206, the dam of Lot 4, is a direct daughter of the prolific leader of the Oakdale Farms donor program, EWA 804, sired by the proven multi-trait Edgewood Angus and Select Sires roster, Teamwork 821. The dam of Lot 4 records a WR 2@107 while carrying ultrasound ratios IMF 3@113 and REA 3@104.
- ★ Due 10/10/2026 to EXAR Bona Fide.

Deer Valley Rita 4690 - Lot 5



- ★ Rita 4690 is a growth, Marb., RE, \$M, \$B, and \$C daughter of the second-generation Deer Valley donor, Rita 1769, and sired by the \$180,000 ST Genetics roster member Kindred.
- ★ Rita 4690 posts ultrasound ratios IMF 110 and REA 103. The dam of Lot 5 combines the one-time registration leader Growth Fund with a direct daughter of the cornerstone Edisto Pines Farm donor, Prediction 2740, by the \$300,000 valued calving-ease specialist All In. The dam of Lot 5 records a WR 1@124 and a YR 1@111 while showing an ultrasound REA ratio 5@103.
- ★ **Due 8/6/26 to Poss Pursuit.**

Deer Valley Rita 4690

DOB: 08-19-2024 Cow Reg: +*21032147 Tattoo: 4690

#*GB Fireball 672

***K A KINDRED**
20446645

*K A Miss High Weigh 862

#+*Deer Valley Growth Fund

+*DEER VALLEY RITA 1769
20340040

+*EPF Rita 5723

+*G A R Sure Fire 6404

*GB Anticipation 432

+*E W A High Weigh 3123

K A Miss Discovery 5163

#+*Basin Payweight 1682

+*Deer Valley Rita 36113

#*Deer Valley All In

*G A R Prediction 2740

CED	BW	WW	YW	RADG	DMI	YH	SC	DOC	PAP	
+10	+2.4	+88	+156	+33	+1.62	+6	+98	+19	+1.57	
CLAW	ANGLE	HP	CEM	Milk	MW	MH	CW	MRB	RE	FAT
+49	+42	+13.0	+16	+24	+86	+4	+77	+1.24	+1.31	-0.13
		SM	SW	\$F	\$G	\$B	\$C			
		+88	+83	+124	+92	+217	+369			

Deer Valley Rita 4741

DOB: 09-11-2024 Cow Reg: +*21137405 Tattoo: 4741

#*GB Fireball 672

***K A KINDRED**
20446645

*K A Miss High Weigh 862

#+*Deer Valley Growth Fund

+*DEER VALLEY RITA 91233
19465981

+*EPF Rita 5723

+*G A R Sure Fire 6404

*GB Anticipation 432

+*E W A High Weigh 3123

K A Miss Discovery 5163

#+*Basin Payweight 1682

+*Deer Valley Rita 36113

#*Deer Valley All In

*G A R Prediction 2740

CED	BW	WW	YW	RADG	DMI	YH	SC	DOC	PAP	
+4	+2.2	+86	+153	+28	+2.20	+7	+1.43	+15	+2.81	
CLAW	ANGLE	HP	CEM	Milk	MW	MH	CW	MRB	RE	FAT
+53	+42	+12.5	+10	+24	+89	+7	+90	+1.25	+1.01	+0.10
		SM	SW	\$F	\$G	\$B	\$C			
		+69	+80	+135	+87	+222	+357			

Deer Valley Rita 4741 - Lot 6A



- ★ Rita 4741 posts an ultrasound REA ratio of 108.
- ★ **Due 10/10/2026 to Poss Pursuit.**

Deer Valley PCF Rita 2420 - Lot 6B



6B Deer Valley PCF Rita 2420
 DOB: 09-28-2024 Cow Reg: +*21313699 Tattoo: 2420

+*G A R Sure Fire 6404
 #*GB FIREBALL 672
 18690054 *GB Anticipation 432
 #+*Deer Valley Growth Fund
 +*DEER VALLEY RITA 91233
 19465981 +*EPF Rita 5723

#+*G A R Sure Fire
 +*G A R Complete N281
 *G A R Anticipation
 GB Ambush 269
 #+*Basin Payweight 1682
 +*Deer Valley Rita 36113
 #*Deer Valley All In
 *G A R Prediction 2740



- ★ Owned with Powell Cattle Farm.
- ★ Rita 2420 carries ultrasound ratios IMF 100 and REA 100.
- ★ Due 11/23/26 to Deer Valley Grand Slam 4183.

CED	BW	WW	YW	RADG	DMI	YH	SC	DOC	PAP	
+11	+8	+75	+133	+29	+1.34	+6	+1.29	+19	+83	
CLAW	ANGLE	HP	CEM	Milk	MW	MH	CW	MRB	RE	FAT
+55	+52	+10.3	+14	+33	+79	+4	+82	+1.73	+1.40	+0.42
HDSOK		SM	SW	SF	SG	SB	SC			
		+64	+83	+140	+113	+253	+392			

EPF Rita J190 - Lot 9



EPF Rita J190
 DOB: 11-08-2021 Cow Reg: +*20189651 Tattoo: J190

+*G A R Momentum K836 #*G A R Momentum
 +*Chair Rock Sure Fire 4060
 #*G A R Progress
 +Chair Rock 5050 G A R 9057
 #*Connealy Cavalry 1149
 +Brusett Forever W857
 #*Summitcrest Complete 1P55
 +*Rita 9M26 of Rita 5F56 Pred



CED	BW	WW	YW	RADG	DMI	YH	SC	DOC	PAP	
+9	+1.3	+80	+148	+29	+2.07	+8	-.24	+8	+.82	
CLAW	ANGLE	HP	CEM	Milk	MW	MH	CW	MRB	RE	FAT
+54	+47	+11.8	+10	+24	+103	+9	+72	+1.66	+53	+.014
SM	SW	SF	SG	SB	SC					
+49	+72	+120	+101	+221	+336					

- ★ Rita J190 is a growth, Marb, and \$B daughter of the foundation Rita in the Edisto Pines Farm donor program, Rita 8207, and sired by the longtime Grimmus Cattle Company roster leader Ultra Provider.
- ★ Rita J190 carries an ultrasound IMF ratio 1@134. Rita 8207, the dam of Lot 9, is a direct daughter of the herd sire producing Teixeira Cattle Company matriarch Rita 1C43 and a maternal sister to the Deer Valley Farm and Select Sires roster member Playbook, and is sired by the outcross Cavalry V3326. The dam of Lot 9 balances a BR 2@98 with a YR 1@102 while showing ultrasound ratios IMF 3@115 and REA 3@101.
- ★ Has a 1/8/26 heifer calf, Lot 9A, by BNWZ Validity 2491, tattoo 6158.
- ★ AI'd 4/1/26 to Deer Valley Margin Call 4342.

Deer Valley Rita 4685 - Lot 10



- ★ Rita 4685 is a low-birth, PAP, and Marb. female produced fourth-generation Deer Valley Rita, Rita 1726, sired by the proven female sire Vision.
- ★ Rita 4685 posts ultrasound ratios IMF 126 and REA 117. Rita 1726, the dam of Lot 10, blends the outcross ST Genetics sire Fair-N-Square with a proven daughter of the \$185,000 record-selling Rutherford Ranches sire Treasure. The dam of Lot 10 records a WR 2@100 and a YR 1@99 while showing ultrasound ratios IMF 2@130 and REA 2@111.
- ★ **Due 9/29/26 to Deer Valley Grand Slam 4183.**

10 **Deer Valley Rita 4685**
 DOB: 08-17-2024 Cow Reg: *21047040 Tattoo: 4685

#*G A R Home Town #*G A R Ashland
 +*H P C A VISION +*Chair Rock Sure Fire 6095
 20226737 +*H P C A Quantum S479 +*H P C A Sunrise 2172

*Myers Fair-N-Square M39 #*Woodhill Blueprint
 *DEER VALLEY RITA 1726 Myers Miss Beauty M136
 20340675 +*Deer Valley Rita 78100 #*MGR Treasure
 +*Deer Valley Rita 3418

CED	BW	WW	YW	RADG	DMI	YH	SC	DOC	PAP	
+7	+7	+70	+126	+30	+1.01	+5	+34	+19	-.80	
CLAW	ANGLE	HP	CEM	Milk	MW	MH	CW	MRB	RE	FAT
+38	+34	+10.9	+7	+29	+51	+5	+58	+1.30	+96	+0.20
HDSOK		\$M	\$W	\$F	\$G	\$B	\$C			
HDSOK		+74	+75	+108	+88	+196	+328			

11 **Deer Valley Beauty 4774**
 DOB: 09-23-2024 Cow Reg: *21145557 Tattoo: 4774

#*G A R Home Town #*G A R Ashland
 +*H P C A VISION +*Chair Rock Sure Fire 6095
 20226737 +*H P C A Quantum S479 +*H P C A Sunrise 2172

*Myers Fair-N-Square M39 #*Woodhill Blueprint
 BF BEAUTY 1197 Myers Miss Beauty M136
 20272792 TLC Beauty 7091 #*Hoover Dam
 Britt Right Answer 5159

CED	BW	WW	YW	RADG	DMI	YH	SC	DOC	PAP	
+8	+1.5	+72	+131	+29	+1.32	+5	+1.18	+28	-1.98	
CLAW	ANGLE	HP	CEM	Milk	MW	MH	CW	MRB	RE	FAT
+56	+56	+12.7	+4	+32	+67	+5	+59	+1.06	+66	+0.50
HDSOK		\$M	\$W	\$F	\$G	\$B	\$C			
HDSOK		+68	+77	+106	+70	+177	+298			

Deer Valley Beauty 4774 - Lot 11



- ★ Beauty 4774 is a PAP and Marb. daughter of the Hinkle female sire Vision, and stems from a dam who combines Fair-N-Square and the Pathfinder Sire Hoover Dam.
- ★ Beauty 4774 records a weaning ratio of 106 while carrying an ultrasound REA ratio of 100. The dam of Lot 11 posts a WR 2@104 and a YR 1@101 while showing an ultrasound REA ratio 2@104.
- ★ **Due 9/24/26 to Baldridge Incognito J852.**

Deer Valley Plus 4629 - Lot 12



12
DF

Deer Valley Plus 4629

DOB: 08-10-2024 Cow Reg: *21043958 Tattoo: 4629

*#GB Fireball 672
***#G A R FIREPROOF**
 20370357 *#Chair Rock Sure Fire 6095

*LAR Man In Black
***#DEER VALLEY PLUS 2646**
 20430361 E&B Lady Plus 643

*#G A R Sure Fire 6404
 *#GB Anticipation 432
 *#*G A R Sure Fire
 *#Chair Rock Progress 3005

*#Bar R Jet Black 5063
 *#JMB Maxine TG 2131
 *#Connealy Confidence Plus
 *#E&b Lady Credence 190



- ★ Plus 4629 is a powerful growth female produced by a first calf heifer and second-generation Deer Valley female Plus 2646, and sired by the multi-trait feature, Fireproof.
- ★ Plus 4629 was produced by a first calf heifer and records a weaning ratio of 110 while showing ultrasound ratios IMF 1@108 and REA 1@114. Plus 2646, the dam of Lot 12, is a direct daughter of the \$210,000 valued now-deceased Pathfinder Dam Lady Plus 643, and sired by proven phenotype female sire Man In Black.
- ★ **Due 8/13/26 to Yon Saluda.**

CED	BW	WW	YW	RADG	DMI	YH	SC	DOC	PAP	
+0	+4.8	+94	+158	+32	+1.45	+1.0	+78	+21	+1.29	
CLAW	ANGLE	HP	CEM	Milk	MW	MH	CW	MRB	RE	FAT
+56	+42	+11.5	+6	+35	+121	+1.2	+76	+1.39	+81	+033
SM	SW	SF	SG	SB	SC					
+52	+90	+120	+90	+211	+326					



Deer Valley Primrose 4680 - Lot 13



- ★ Primrose 4680 is a growth prospect produced by a second-generation Deer Valley Primrose, Primrose 1853, sired by the proven Deer Valley and Knoll Crest Farms sire Statesman.
- ★ Primrose 1853, the dam of Lot 13, blends the one-time registration leader Growth Fund with a proven daughter of the foundation 44 Farms female sire Discovery, while stemming from the famous Thomas Angus Ranch Primrose. The dam of Lot 13 posts an ultrasound IMF ratio 2@105.
- ★ **Due 10/9/26 to Deer Valley Grand Slam 4183.**

13 **Deer Valley Primrose 4680**
 DOB: 08-17-2024 Cow Reg: *21031663 Tattoo: 4680

#*Tehama Patriarch F028 #*S S Niagara Z29
 #*VIRGINIA TECH STATESMAN Tehama Elite Blackbird D826
 20085208 +*Vpi 310A Rita 9G6 Et #*Ellingson Homestead 6030
 AED Rita 310A
 #*Deer Valley Growth Fund #*Basin Payweight 1682
 #*DEER VALLEY PRIMROSE 1853 +*Deer Valley Rita 36113
 20242086 *Optum's Primrose 8537 #*V A R Discovery 2240
 *Thomas Primrose 6731



CED	BW	WW	YW	RADG	DMI	YH	SC	DOC	PAP	
+6	+1.0	+91	+171	+34	+2.33	+4	+99	+13	+1.76	
CLAW	ANGLE	HP	CEM	Milk	MW	MH	CW	MRB	RE	FAT
+44	+40	+13.3	+13	+25	+122	+8	+84	+88	+90	+069
HDSOK		SM	SW	SF	SG	SB	SC			
		+56	+85	+136	+63	+199	+314			

14 **Deer Valley Blackbird 4721**
 DOB: 09-04-2024 Cow Reg: *21129546 Tattoo: 4721

#*Tehama Patriarch F028 #*S S Niagara Z29
 #*VIRGINIA TECH STATESMAN Tehama Elite Blackbird D826
 20085208 +*Vpi 310A Rita 9G6 Et #*Ellingson Homestead 6030
 AED Rita 310A
 *LAR Man In Black #*Bar R Jet Black 5063
 #*DEER VALLEY BLACKBIRD 2647 #JMB Maxine TG 2131
 20596413 +*Deer Valley Blackbird 9369 #*Deer Valley Growth Fund
 +*Deer Valley Blackbird 6357



CED	BW	WW	YW	RADG	DMI	YH	SC	DOC	PAP	
+10	+1.6	+79	+142	+32	+1.12	+6	+54	+6	+20	
CLAW	ANGLE	HP	CEM	Milk	MW	MH	CW	MRB	RE	FAT
+53	+38	+13.9	+15	+20	+81	+7	+63	+1.49	+26	+091
HDSOK		SM	SW	SF	SG	SB	SC			
		+70	+70	+118	+83	+202	+332			

Deer Valley Blackbird 4721 - Lot 14



- ★ Blackbird 4721 is a balanced-trait PAP female produced by a first calf heifer and fourth-generation Deer Valley Blackbird, Blackbird 2647, and sired by the proven Select Sires roster member Statesman.
- ★ Blackbird 4721 was produced by a first calf heifer and records a weaning ratio of 107 while showing ultrasound ratios IMF 123 and REA 111. Blackbird 2647, the first calf heifer dam of Lot 14, blends the phenotype and female sire Man In Black with a proven daughter of the breed registration leader Growth Fund.
- ★ **Due 9/23/26 to Deep Creek Legitimate 203.**

Deer Valley Rita 4635 - Lot 15A



15A Deer Valley Rita 4635
DOB: 08-12-2024 Cow Reg: +*21029699 Tattoo: 4635

#*S S Enforcer E812
+*WILLIAMS HOLLYWOOD 700-380
19850747 +*Powell Erica 7312

#SydGen Enhance
#S S Miss Daybreak K011 3K17
+*ECO Lombardi 1512
+*Williams Prop Erica 255 -895

#*SG Salvation
+*DEER VALLEY RITA 1709
20250979 *Deer Valley Rita 62781

#+*Baldrige Alternative E125
+*MGR JP Rita 7037
#*V A R Discovery 2240
+*Deer Valley Rita 2276



CED	BW	WW	YW	RADG	DMI	YH	SC	DOC	PAP	
+4	+3.6	+105	+179	+28	+2.30	+1.3	+1.60	+17	+1.14	
CLAW	ANGLE	HP	CEM	Milk	MW	MH	CW	MRB	RE	FAT
+36	+39	+8.9	+7	+24	+130	+1.1	+73	+1.35	+1.36	-.002
HOSOK		SM	SW	SF	SG	SB	SC			
+64		+94	+107	+97	+205	+330				

★ Rita 4635 carries an ultrasound REA ratio of 121.
★ Due 8/13/26 to Poss Pursuit.

15B Deer Valley Rita 4689
DOB: 08-19-2024 Cow Reg: +*21044996 Tattoo: 4689

#*S S Enforcer E812
+*WILLIAMS HOLLYWOOD 700-380
19850747 +*Powell Erica 7312

#SydGen Enhance
#S S Miss Daybreak K011 3K17
+*ECO Lombardi 1512
+*Williams Prop Erica 255 -895

#*SG Salvation
+*DEER VALLEY RITA 1709
20250979 *Deer Valley Rita 62781

#+*Baldrige Alternative E125
+*MGR JP Rita 7037
#*V A R Discovery 2240
+*Deer Valley Rita 2276



CED	BW	WW	YW	RADG	DMI	YH	SC	DOC	PAP	
-1	+4.8	+114	+192	+32	+2.38	+1.0	+1.52	+21	+3.02	
CLAW	ANGLE	HP	CEM	Milk	MW	MH	CW	MRB	RE	FAT
+46	+42	+10.4	+4	+23	+127	+9	+73	+1.43	+99	+007
HOSOK		SM	SW	SF	SG	SB	SC			
+70		+101	+105	+96	+201	+331				

★ Due 9/2/26 to Yon Saluda.

Deer Valley Hollywood 46110



A full brother to Lots 15A and 15B featured in the recent Deer Valley Farm Bull sale.

- ★ Featuring two powerful high growth daughters of the fifth-generation Deer Valley Rita, Rita 1709 and sired by the multi-trait leader Hollywood 700-380.
- ★ Rita 1709, the donor dam of Lots 15A and 15B is a direct daughter of the \$150,000 top-selling proven donor of the 2021 Deer Valley Sale selected by Edisto Pines Farm, Rita 62781 sired by the foundation Grimmus Cattle Company roster member, Salvation.
- ★ Full and maternal sisters to the dam of Lots 15A and 15B include: Rita 0199, the \$200,000 valued half interest selection of Spruce Mountain Ranch in the 2021 Deer Valley Farm Sale; Rita 1718, the \$55,000 selection of Spruce Mountain Ranch and Express Ranches in the 2022 Deer Valley Sale; Rita 11150 selected by Jac's Ranch in that same offering; Rita J535, the selection of Elite Cattle Company in the record-setting 2023 Edisto Pines Sale; and Rita J536 selling in that offering to Baldrige Performance Angus. The dam of Lots 15A and 15B records a WR 1@106 and a YR 1@99 while showing ultrasound ratios IMF 6@115 and REA 6@113.

Deer Valley Blackbird 4729 - Lot 18A



16

Deer Valley Blackcap 4634

DOB: 08-12-2024 Cow Reg: *21032889 Tattoo: 4634

#*S S Enforcer E812
WILLIAMS HOLLYWOOD 700-380
 19850747 +*Powell Erica 7312

#*GB Fireball 672
DEER VALLEY BLACKCAP 2830
 20610156 *Deer Valley Blackcap 9169

#SydGen Enhance
 #S S Miss Daybreak K011 3K17
 +*ECO Lombardi 1512
 +*Williams Prop Erica 255 -895

+*G A R Sure Fire 6404
 *GB Anticipation 432
 #+*Deer Valley Growth Fund
 *Deer Valley Blackcap 72109

CED	BW	WW	YW	RADG	DMI	YH	SC	DOC	PAP	
+3	+3.3	+93	+165	+30	+2.26	+7	+1.42	+19	+22	
CLAW	ANGLE	HP	CEM	Milk	MW	MH	CW	MRB	RE	FAT
+31	+35	+12.2	+15	+28	+99	+6	+68	+1.36	+1.07	-.039
		\$M	\$W	\$F	\$G	\$B	\$C			
		+83	+89	+102	+97	+200	+342			

- ★ Blackcap 4634 is a growth, PAP, Marb., RE, \$M, \$W, and \$C prospect produced by a first calf heifer and fourth-generation Deer Valley Blackcap, Blackcap 2830, and sired by the proven growth leader Hollywood 700-380.
- ★ The first calf heifer dam of Lot 16 blends the proven carcass of Fireball with a powerful daughter of the breed registration leader and foundation Deer Valley and Select Sires headliner Growth Fund.
- ★ **Due 8/13/26 to Poss Pursuit.**

17

Deer Valley Rita 4693

DOB: 08-19-2024 Cow Reg: *21053235 Tattoo: 4693

#*S S Enforcer E812
WILLIAMS HOLLYWOOD 700-380
 19850747 +*Powell Erica 7312

#*G A R Home Town
DEER VALLEY RITA 1340
 20059870 +*Deer Valley Rita 9366

#SydGen Enhance
 #S S Miss Daybreak K011 3K17
 +*ECO Lombardi 1512
 +*Williams Prop Erica 255 -895

+*G A R Ashland
 +*Chair Rock Sure Fire 6095
 #*Woodhill Blueprint
 +*Deer Valley Rita 5383

CED	BW	WW	YW	RADG	DMI	YH	SC	DOC	PAP	
+8	+1.9	+90	+166	+34	+1.81	+7	+1.10	+13	-.46	
CLAW	ANGLE	HP	CEM	Milk	MW	MH	CW	MRB	RE	FAT
+36	+41	+9.0	+11	+27	+98	+8	+70	+1.27	+1.05	+0.09
		\$M	\$W	\$F	\$G	\$B	\$C			
		+64	+87	+120	+88	+209	+335			

- ★ Rita 4693 is a growth, PAP, Marb, RE, \$W, and \$B prospect produced by a sixth-generation Deer Valley Rita, Rita 1340, and sired by the proven Soaring Eagle of the Ozarks feature Hollywood 700-380.
- ★ Rita 4693 posts a weaning ratio of 101. The proven dam of Lot 17 blends the proven female sire Home Town with a sensational-producing daughter of the cornerstone Deer Valley female sire Blueprint.
- ★ **Due 9/3/26 to Deep Creek Legitimate 203.**

18A

Deer Valley Blackbird 4729

DOB: 09-07-2024 Cow Reg: +*21168767 Tattoo: 4729

#*S S Enforcer E812
WILLIAMS HOLLYWOOD 700-380
 19850747 +*Powell Erica 7312

#*G A R Home Town
DEER VALLEY BLACKBIRD 1129
 20059912 +*Deer Valley Blackbird 6357

#SydGen Enhance
 #S S Miss Daybreak K011 3K17
 +*ECO Lombardi 1512
 +*Williams Prop Erica 255 -895

#+*G A R Ashland
 +*Chair Rock Sure Fire 6095
 #*Connealy Black Granite
 +*V A R Blackbird 1218

CED	BW	WW	YW	RADG	DMI	YH	SC	DOC	PAP	
+10	+7	+83	+143	+27	+1.59	+5	+1.15	+22	-.88	
CLAW	ANGLE	HP	CEM	Milk	MW	MH	CW	MRB	RE	FAT
+52	+38	+9.4	+6	+29	+72	+6	+57	+1.05	+0.94	-.019
		\$M	\$W	\$F	\$G	\$B	\$C			
		+77	+91	+97	+78	+175	+304			

★ **Due 11/18/26 to Deer Valley Grand Slam 4183.**

- ★ Featuring two multi-trait daughters of the third-generation member of the Deer Valley donor program and the herd sire producing Blackbird family, Blackbird 1129 sired by the growth highlight, Hollywood 700-380 and the Deer Valley and Knoll Crest Farms headliner, Statesman.
- ★ Rita 1129, the donor dam of Lot 18A and 18B blends the proven multi-trait female sire, Home Town and the outcross phenotype sire Black Granite with the cornerstone Blackbird in the Jac's Ranch program, Blackbird 1218.



18B Deer Valley Blackbird 4846
 DOB: 10-19-2024 Cow Reg: +*21159558 Tattoo: 4846

#*Tehama Patriarch F028 #*S S Niagara Z29
 #*VIRGINIA TECH STATESMAN Tehama Elite Blackbird D826
 20085208 +*Vpi 310A Rita 9G6 Et #*Ellingson Homestead 6030
 AED Rita 310A
 #*G A R Home Town #*G A R Ashland
 +*DEER VALLEY BLACKBIRD 1129 +*Chair Rock Sure Fire 6095
 20059912 +*Deer Valley Blackbird 6357 #*Connealy Black Granite
 +*V A R Blackbird 1218



CED	BW	WW	YW	RADG	DMI	YH	SC	DOC	PAP	
+5	+1.7	+94	+162	+30	+1.95	+6	+96	+19	-1.22	
CLAW	ANGLE	HP	CEM	Milk	MW	MH	CW	MRB	RE	FAT
+64	+36	+11.3	+13	+21	+112	+9	+77	+1.40	+76	+033
HOSOK		SM	SW	SF	SG	SB	SC			
		+66	+86	+119	+89	+209	+337			

★ Due 12/03/26 to Deer Valley Grand Slam 4183.

Deer Valley Blackbird 1129



Daughters sell as Lots 18A and 18B.

EXAR Linda 2757



The second-generation Deer Valley Linda and dam of Lot 19.

19 Deer Valley Linda 4615
 DOB: 08-08-2024 Cow Reg: +*21044012 Tattoo: 4615

#*Sitz Resilient 10208 #*Sitz Stellar 726D
 #*CONNEALY CRAFTSMAN #*Sitz Miss Burgess 1856
 20132505 #*Black Cathy of Conanga 8521 *Connealy Niobrara 5451
 Black Carla of Conanga 450
 +*BJ Surpass #*TEX Playbook 5437
 +*EXAR LINDA 2757 +*BJ Prophet 5275
 20397697 +*Chair Rock Sure Fire 6095 #*G A R Sure Fire
 +*Chair Rock Progress 3005



CED	BW	WW	YW	RADG	DMI	YH	SC	DOC	PAP	
+9	+2	+72	+117	+23	+93	+8	+29	+17	-1.23	
CLAW	ANGLE	HP	CEM	Milk	MW	MH	CW	MRB	RE	FAT
+38	+38	+13.2	+12	+44	+41	+6	+49	+1.21	+52	+055
HOSOK		SM	SW	SF	SG	SB	SC			
		+97	+98	+88	+76	+164	+310			

★ Linda 4615 is a third-generation member of the famous herd sire producing Linda family and blends the record-selling Craftsman with a direct daughter of the \$125,000 Sure Fire 6095, and sired by the proven \$M leader Surpass.
 ★ Linda 4615 was produced by a first calf heifer and records a weaning ratio of 112 while showing ultrasound ratios IMF 114 and REA 100. Maternal siblings to the first calf heifer dam of Lot 19 include: the \$475,000 one-time record-selling Home Town; the \$450,000 multi-trait Fireproof; the proven genomic leader in the FB Genetics program Grid Maker; Linda 3047, the \$360,000 valued half-interest selection of Riverbend Ranch in the 2023 Spruce Mountain Ranch Sale; Linda 41110, the \$340,000 valued half-interest selection of San Jose River Farm and Hill Top Angus as the top-selling female of the 2024 Deer Valley Farm Sale; Linda 2806, the \$280,000 valued half-interest selection of Pollard Farms; and Linda 2903, the \$170,000 top-selling female of the 2023 Deer Valley Farm Sale selected by Nowatzke Cattle Company, Maple Lane Angus, and Pollard Farms.

★ Due 9/6/26 to EXAR Bona Fide.

20 Deer Valley Queen 4707
 DOB: 09-01-2024 Cow Reg: +*21129545 Tattoo: 4707

+*Deer Valley Optimum 9246 #*Deer Valley Growth Fund
 +*DEER VALLEY BASELINE 21007 +*G A R Progress 830
 20367129 +*Chair Rock Sure Fire 6095 #*G A R Sure Fire
 +*Chair Rock Progress 3005
 #*E & B Wildcat 9402 #*G A R Discovery 6737H
 +*DEER VALLEY QUEEN 2636 E&B Lady Plus 643
 20611587 Mill Brae PW Queen 7078 #*Basin Payweight 1682
 Mill Brae Ident Queen 4111



CED	BW	WW	YW	RADG	DMI	YH	SC	DOC	PAP	
+8	+2.1	+81	+142	+29	+1.33	+2	+06	+18	+45	
CLAW	ANGLE	HP	CEM	Milk	MW	MH	CW	MRB	RE	FAT
+43	+45	+8.4	+13	+22	+82	+2	+65	+1.19	+73	+039
HOSOK		SM	SW	SF	SG	SB	SC			
		+67	+74	+117	+78	+196	+321			

★ Queen 4707 is a balanced-trait daughter of the second-generation and first calf heifer in the Deer Valley program, Queen 2636, and sired by the featured DVF herd sire Baseline 21007.
 ★ Queen 4707 was produced by a first calf heifer and shows a weaning ratio of 99. Queen 2636, the dam of Lot 20, is a direct daughter of the proven and productive Deer Valley donor, Queen 7078, and sired by Wildcat, the \$50,000 son of the former Deer Valley and Maderias Angus donor, Lady Plus 643.

★ Due 9/23/26 to Basin Jameson 1076.

Deer Valley Baseline 21007



A daughter sells as Lot 20.

Deer Valley Rita 4215 - Lot 21





21
Deer Valley Rita 4215

DOB: 02-03-2024
Cow Reg: *20967054
Tattoo: 4215

+*G A R Sunbeam
*CONNEALY COMMERCE
20132642

*Avira of Conanga 814R

#*G A R Sunrise
*G A R Ingenuity 3132
+*Connealy Cade
*Avie of Conanga 624P

#*Woodhill Blueprint
+*DEER VALLEY RITA 0234
19783180

#*Connealy Confidence Plus
*Woodhill Evergreen Z291-B233
#*Plattmere Weigh Up K360
+*Deer Valley Rita 1126

CED	BW	WW	YW	RADG	DMI	YH	SC	DOC	PAP	
+11	+8	+78	+140	+32	+1.02	+3	+1.61	+15	-90	
CLAW	ANGLE	HP	CEM	Milk	MW	MH	CW	MRB	RE	FAT
+49	+55	+8.3	+11	+32	+62	+5	+61	+82	+65	+036
	SM	SW	SF	SG	SB	SC				
	+60	+87	+112	+60	+172	+283				

Rita 4215 is a tremendous outcross low-birth, PAP, and \$W prospect produced by a fourth-generation Deer Valley Rita, Rita 0234, and sired by the proven female sire in the ST Genetics roster, Commerce.

★ Rita 4215 posts a birth ratio of 92 and a weaning ratio of 99 while showing ultrasound ratios IMF 109 and REA 102. Rita 0234, the dam of Lot 21, blends the proven Deer Valley female sire Blueprint with a direct daughter of the cornerstone Trowbridge Farms McKean Brothers and Millstone Cattle Company donor Rita 1126 by the proven female sire Weigh Up. The dam of Lot 21 records a BR 3@98. a WR 3@104 and a YR 2@106 while carrying ultrasound ratios IMF 3@104 and REA 3@108.

★ **Due 9/5/26 to Basin Jameson 1076.**

Deer Valley Blackcap 3767 - Lot 22



22 Deer Valley Blackcap 3767
 DOB: 09-08-2023 Cow Reg: +*20898708 Tattoo: 3767

#*Spring Cove Reno 4021 #+*KM Broken Bow 002
 +*YON TOP CUT G730 *Spring Cove Liza 021
 19476453 +*Yon Sarah D668 #*V A R Discovery 2240
 +*Yon Sarah A615



#+*Quaker Hill Rampage 0A36 #MCC Daybreak
 *DEER VALLEY BLACKCAP 7362 +*QHF Blackcap 6E2 of4V16 4355
 18827747 Banner Ms Blackcap 5231 #*V A R Discovery 2240
 WR Imp Blackcap 136 of 6233

CED	BW	WW	YW	RADG	DMI	YH	SC	DOC	PAP	
+8	+1.9	+91	+160	+.29	+2.24	+.7	+1.46	+21	+3.51	
CLAW	ANGLE	HP	CEM	Milk	MW	MH	CW	MRB	RE	FAT
+4.6	+5.1	+14.2	+11	+29	+82	+6	+68	+1.40	+98	-.017
HDSOK		SM	SW	SF	SG	SB	SC			
		+82	+96	+98	+96	+194	+334			

- ★ Blackcap 3767 is a growth, Marb., \$M, \$W, and \$C female sired by the proven SM leader of the Select Sires roster, Top Cut, and produced by a second-generation Deer Valley Blackcap, Blackcap 7362.
- ★ Blackcap 3767 posts ultrasound ratios IMF 104 and REA 105. The dam of Lot 22 blends the proven multi-trait leader Rampage with a sensational-producing daughter of the legendary 44 Farms female sire Discovery. The dam of Lot 22 records a WR 1@113 while carrying an ultrasound REA ratio 8@105.
- ★ Due 9/4/26 to Basin Jameson 1076.

Deer Valley Lady Plus 4297 - Lot 23A



- ★ Lady Plus 4297 shows an ultrasound IMF ratio of 100.
- ★ Due 9/15/26 to BA7 Oaks Bold Ruler.

23A Deer Valley Lady Plus 4297
DOB: 02-24-2024 Cow Reg: +*20966098 Tattoo: 4297

#*G A R Home Town #*G A R Ashland
 +*H P C A VISION +*Chair Rock Sure Fire 6095
 20226737 +*H P C A Quantum S479 +*G A R Quantum
 +*H P C A Sunrise 2172
 #*Connealy Confidence Plus #*Connealy Confidence 0100
 E&B LADY PLUS 643 Elbanna of Conanga 1209
 18645816 #+E&b Lady Credence 190 #+*SQ Credence 675
 +E&B Lady 1407 New Design 464



CED	BW	WW	YW	RADG	DMI	YH	SC	DOC	PAP	
+10	+1.5	+74	+137	+30	+1.63	+3	-.42	+25	+04	
CLAW	ANGLE	HP	CEM	Milk	MW	MH	CW	MRB	RE	FAT
+.55	+.40	+10.0	+7	+28	+73	+5	+54	+1.16	+73	+.024
HOSOK		SM	SW	SF	SG	SB	SC			
HOSOK		+65	+74	+103	+78	+182	+301			

23B Deer Valley Lady Plus 4306
DOB: 03-01-2024 Cow Reg: +*20991924 Tattoo: 4306

#*G A R Home Town #*G A R Ashland
 +*H P C A VISION +*Chair Rock Sure Fire 6095
 20226737 +*H P C A Quantum S479 +*G A R Quantum
 +*H P C A Sunrise 2172
 #*Connealy Confidence Plus #*Connealy Confidence 0100
 E&B LADY PLUS 643 Elbanna of Conanga 1209
 18645816 #+E&b Lady Credence 190 #+*SQ Credence 675
 +E&B Lady 1407 New Design 464



CED	BW	WW	YW	RADG	DMI	YH	SC	DOC	PAP	
+7	+3.1	+76	+140	+33	+1.28	+8	-.23	+28	+2.22	
CLAW	ANGLE	HP	CEM	Milk	MW	MH	CW	MRB	RE	FAT
+.49	+.35	+8.9	+6	+26	+90	+1.0	+55	+1.11	+1.09	+.013
HOSOK		SM	SW	SF	SG	SB	SC			
HOSOK		+65	+65	+101	+81	+183	+302			

Deer Valley Lady Plus 4306 - Lot 23B



- ★ Lady Plus 4306 records ultrasound ratios IMF 111 and REA 112.
- ★ Due 11/13/26 to Deer Valley Grand Slam 4183.

★ Featuring two balanced-trait daughters of the \$210,000 valued now-deceased herd sire producer, Lady Plus 643 sired by the multi-trait leader, Vision.
 ★ Lady Plus 643, the Pathfinder Dam of Lots 23A and 23B was featured in the Deer Valley and Maderias Farms joint embryo programs and records a WR 4@107 and a YR 4@108. Full and maternal siblings to Lots 23A and 23B include: Lady Plus 2632, the \$85,000 selection of San Jose River Farm in the 2023 Deer Valley Sale; Wildcat 9402, the \$50,000 top-selling bull of the 2021 Benoit Angus Bull Sale selected by Genex; Lady Plus 2762, the \$24,000 selection of Elite Cattle Company; Lady Plus 4251, the \$40,000 selection of Katie Colin Farm in the 2025 Deer Valley Sale; Lady Plus 41129, the \$35,000 selection of Brumfield Angus in that offering; and Lady Plus 42101 selling to Double Barrel Angus in that event.

25 Deer Valley Rita 4321

DOB: 03-11-2024 Cow Reg: *20981765 Tattoo: 4321

#*Sitz Resilient 10208
***CONNEALY CRAFTSMAN**
 20132505 #*Black Cathy of Conanga 8521

#*Sitz Stellar 726D
 *Sitz Miss Burgess 1856
 *Connealy Niobrara 5451
 Black Carla of Conanga 450

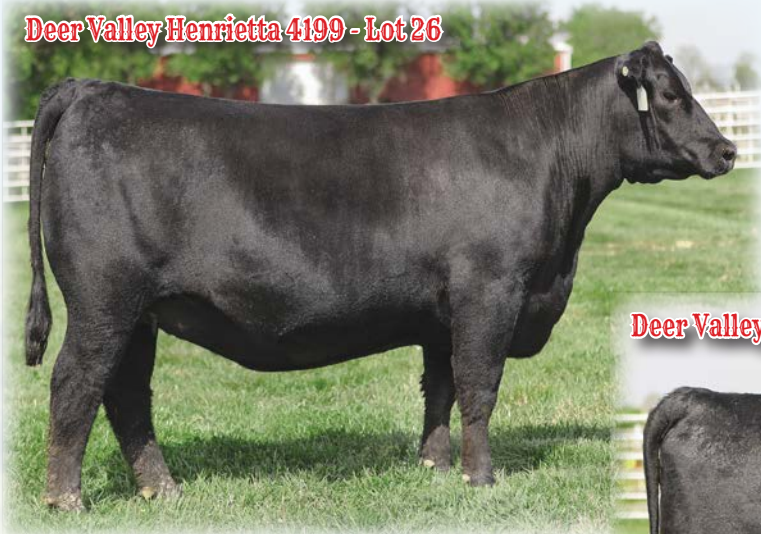


#*Yon Chattooga E46
***DEER VALLEY RITA 1307**
 20021614 +*Deer Valley Rita 9177

#*Connealy Comrade 1385
 +*Yon Sally C200
 #*Woodhill Blueprint
 +*Deer Valley Rita 6105

CED	BW	WW	YW	RADG	DMI	YH	SC	DOC	PAP	
+10	-.5	+74	+134	+28	+1.54	+.2	+22	+18	+2.29	
CLAW	ANGLE	HP	CEM	Milk	MW	MH	CW	MRB	RE	FAT
+39	+41	+13.6	+6	+39	+58	+4	+64	+91	+1.11	+0.31
HDSOK		SM	SW	SF	SG	SB	SC			
		+84	+92	+110	+70	+180	+317			

- ★ Rita 4321 is a calving-ease, \$M, and \$W daughter of the tremendous-producing Deer Valley female Rita 1307, and sired by the record-selling ST Genetics and Select Sires roster member, Craftsman.
- ★ Rita 4321 records a birth ratio of 99, a weaning ratio of 103 and a yearling ratio of 104 while showing ultrasound ratios IMF 103 and REA 110. The dam of Lot 25 blends the proven female sires in the Deer Valley herd sire roster, Chattooga E46 and Blueprint, with a fourth-generation Deer Valley Rita, Rita 6105. The dam of Lot 25 posts a WR 2@108 and a YR 2@107 while carrying ultrasound ratios IMF 2@100 and REA 2@106.
- ★ **Due 11/18/26 to Deer Valley Grand Slam 4183.**



Deer Valley Henrietta 4199 - Lot 26



Deer Valley Leah 4217 - Lot 27

26 Deer Valley Henrietta 4199

DOB: 01-20-2024 Cow Reg: +*20880665 Tattoo: 4199

#*Tehama Patriarch F028
***VIRGINIA TECH STATESMAN**
 20085208 +*Vpi 310A Rita 9G6 Et

#*S S Niagara Z29
 Tehama Elite Blackbird D826
 #*Ellingson Homestead 6030
 AED Rita 310A



#**SandPoint Butkus X797
***DEER VALLEY HENRIETTA 51201**
 18234762 +*Sitz Henrietta Pride 643T

#*S A V Final Answer 0035
 +G A R Grid Maker 4603
 #*Connealy Onward
 *Sitz Henrietta Pride 81M

CED	BW	WW	YW	RADG	DMI	YH	SC	DOC	PAP	
+12	-.6	+80	+152	+31	+2.36	+.8	+83	+17	-1.94	
CLAW	ANGLE	HP	CEM	Milk	MW	MH	CW	MRB	RE	FAT
+45	+49	+15.8	+16	+19	+111	+6	+65	+1.18	+49	+0.78
HDSOK		SM	SW	SF	SG	SB	SC			
		+60	+67	+109	+72	+181	+295			

- ★ Henrietta 4199 is a calving-ease and PAP daughter of the second-generation Deer Valley donor Henrietta 51201, and sired by the proven Deer Valley and Knoll Crest Farms sire Statesman.
- ★ Henrietta 4199 carries ultrasound ratios of 99 for IMF and REA. The dam of Lot 26 is a direct daughter of the \$8 million producing legendary Deer Valley, Express Ranches, and Pollard Farms matriarch Henrietta Pride 643T, and sired by the DVF and Select Sires roster member Butkus X797.
- ★ **Due 9/19/26 to Yon Saluda.**

27 Deer Valley Leah 4217

DOB: 02-05-2024 Cow Reg: *20969273 Tattoo: 4217

#*Tehama Patriarch F028
***VIRGINIA TECH STATESMAN**
 20085208 +*Vpi 310A Rita 9G6 Et

#*S S Niagara Z29
 Tehama Elite Blackbird D826
 #*Ellingson Homestead 6030
 AED Rita 310A

#**Deer Valley Growth Fund
***DEER VALLEY LEAH 1186**
 20021577 Potts Bros Leah 7042

#**Basin Payweight 1682
 +*Deer Valley Rita 36113
 *Musgrave Mediator
 EF Leah 1370

CED	BW	WW	YW	RADG	DMI	YH	SC	DOC	PAP	
+10	+.7	+81	+147	+30	+1.94	+.7	+1.14	+15	-2.04	
CLAW	ANGLE	HP	CEM	Milk	MW	MH	CW	MRB	RE	FAT
+53	+56	+12.0	+16	+18	+90	+8	+71	+60	+59	+0.62
HDSOK		SM	SW	SF	SG	SB	SC			
		+54	+69	+119	+46	+165	+268			

- ★ Leah 4217 is a balanced-trait female who combines the foundation Deer Valley sires Statesman and Growth Fund with an outcross daughter of the ABS roster member Mediator.
- ★ **Due 8/13/26 to Poss Pursuit.**



Deer Valley Rita 4148 - Lot 28

28 Deer Valley Rita 4148
 DOB: 01-08-2024 Cow Reg: *20910180 Tattoo: 4148

#+*Tehama Tahoe B767 *Tehama Upward Y238
 *LONG TETON 107 *+Tehama Mary Blackbird Y684
 20274029 *Long Lucy 909 #+*Deer Valley Growth Fund
 *Schafer Hickory Lucy E320
 #+*Baldridge Alternative E125 Poss Easy Impact 0119
 +*DEER VALLEY RITA 1210 Baldridge Blackbird A030
 20068093 +*Deer Valley Rita 6827 #+*Quaker Hill Rampage 0A36
 +*Deer Valley Rita 36113

CED	BW	WW	YW	RADG	DMI	YH	SC	DOC	PAP	
+12	-2.0	+77	+141	+35	+97	+1	+92	+18	+4.03	
CLAW	ANGLE	HP	CEM	Milk	MW	MH	CW	MRB	RE	FAT
+50	+48	+9.8	+12	+19	+85	+1	+50	+55	+1.32	-.026
HDSOK		\$M	\$W	\$F	\$G	\$B	\$C			
HDSOK		+60	+71	+100	+59	+160	+268			

- ★ Rita 4148 is a calving-ease and RE female from the family that produced the one-time breed registration leader Growth Fund and stems from a fifth-generation Deer Valley Rita, Rita 1210, and sired by the outcross sire Teton 107.
- ★ Rita 4148 posts a birth ratio of 91, a weaning ratio of 107 and a yearling ratio of 101 while carrying an ultrasound REA ratio of 131. The dam of Lot 28 combines the outcross sire Alternative with a maternal sister to Growth Fund and Wall Street, Rita 6827. The dam of Lot 28 records a BR 2@99, a WR 2@110 and a YR 2@106 while showing an ultrasound REA ratio 2@127.
- ★ Due 12/18/26 to Deer Valley Grand Slam 4183.

29 Deer Valley Rita 4410
 DOB: 04-07-2024 Cow Reg: *20968490 Tattoo: 4410

+*G A R Sunbeam #+*G A R Sunrise
 *CONNEALY COMMERCE *G A R Ingenuity 3132
 20132642 *Avira of Conanga 814R *+Connealy Cade
 *Avie of Conanga 624P
 +*G A R Greater Good #+*G A R Ashland
 +*DEER VALLEY RITA 21150 *+G A R Sure Fire A5008
 20355913 +*Deer Valley Rita 6661 *Plattemere Weigh Up K360
 *SJH Objective of 6108 0042



CED	BW	WW	YW	RADG	DMI	YH	SC	DOC	PAP	
+10	+4	+79	+146	+30	+1.87	+6	+64	+21	+1.74	
CLAW	ANGLE	HP	CEM	Milk	MW	MH	CW	MRB	RE	FAT
+52	+55	+7.3	+13	+26	+88	+5	+60	+1.06	+59	-.003
HDSOK		\$M	\$W	\$F	\$G	\$B	\$C			
HDSOK		+44	+77	+98	+73	+172	+267			

- ★ Rita 4410 is a low-birth daughter of the first calf heifer in the Deer Valley spring calving program Rita 21150, and sired by the proven headliner of the ST Genetics roster, Commerce.
- ★ Rita 4410 was produced by a first calf heifer and carries an ultrasound IMF ratio of 105. The dam of Lot 29 is a direct daughter of the prolific former headliner of the Deer Valley donor program Rita 6661, and sired by the ST Genetics roster member Greater Good.
- ★ Due 9/16/26 to Basin Jameson 1076.



Deer Valley Rita 4410 - Lot 29

30 Deer Valley Henrietta 4152
 DOB: 01-09-2024 Cow Reg: *20899685 Tattoo: 4152

+*G A R Sunbeam #+*G A R Sunrise
 *CONNEALY COMMERCE *G A R Ingenuity 3132
 20132642 *Avira of Conanga 814R *+Connealy Cade
 *Avie of Conanga 624P
 #SydGen Enhance **SydGen Exceed 3223
 +*DEER VALLEY HENRIETTA 0135 SydGen Rita 2618
 19786349 +*Deer Valley Henrietta 7103 #+*WR Journey-1X74
 +*Sitz Henrietta Pride 643T



CED	BW	WW	YW	RADG	DMI	YH	SC	DOC	PAP	
+12	+1.3	+88	+157	+32	+2.07	+8	+1.02	+32	+1.80	
CLAW	ANGLE	HP	CEM	Milk	MW	MH	CW	MRB	RE	FAT
+31	+48	+9.4	+14	+22	+113	+1.1	+63	+94	+85	+0.10
HDSOK		\$M	\$W	\$F	\$G	\$B	\$C			
HDSOK		+67	+79	+97	+70	+168	+285			

- ★ Henrietta 4152 is a growth prospect produced by a sensational and productive member of the legendary Henrietta Pride family in the Deer Valley program, Henrietta 0135, and sired by the female outcross sire, Commerce.
- ★ Henrietta 4152 records a weaning ratio of 110 and a yearling ratio of 107 while showing ultrasound ratios IMF 102 and REA 103. The dam of Lot 30 blends the ORlgen roster member Enhance with a direct daughter of the legendary Henrietta Pride 643T by the Express Ranches sire Journey. The dam of Lot 30 posts a BR 3@99, a WR 3@106 and a YR 2@105 while carrying an ultrasound REA ratio 3@103.
- ★ Due 9/6/26 to Basin Jameson 1076.



Deer Valley Henrietta 4152 - Lot 30

31
DVF

Deer Valley Lady 4218

DOB: 02-05-2024 Cow Reg: *20968501 Tattoo: 4218

+*G A R Sunbeam
*CONNEALY COMMERCE
20132642 *Avira of Conanga 814R

#*G A R Sunrise
*G A R Ingenuity 3132
+*Connealy Cade
*Avie of Conanga 624P



#*Woodhill Blueprint
+*DEER VALLEY LADY 0723
19940132 +*Deer Valley Lady 6742

#*Connealy Confidence Plus
*Woodhill Evergreen Z291-B233
#*Quaker Hill Rampage 0A36
*Deer Valley Lady 2295

CED	BW	WW	YW	RADG	DMI	YH	SC	DOC	PAP	
+13	+6	+73	+117	+20	+1.11	+2	+54	+15	-.86	
CLAW	ANGLE	HP	CEM	Milk	MW	MH	CW	MRB	RE	FAT
+56	+54	+7.5	+15	+31	+19	-.2	+50	+96	+75	-.001
HDSOK		SM	SW	SF	SG	SB	SC			
		+81	+90	+84	+70	+155	+282			

- ★ Lady 4218 is a low-birth daughter of the featured Deer Valley and Windy Hill Meadows joint donor programs Lady 0723, and sired by the longtime highlight of the ST Genetics roster, Commerce.
- ★ Lady 4218 stems from a first calf heifer and posts a weaning ratio of 101 and a yearling ratio of 99 while carrying an ultrasound REA ratio of 101. The dam of Lot 31 blends the foundation Deer Valley female sire Blueprint with a productive daughter of the Mapleton Farm and Quaker Hill Farms sire Rampage.
- ★ Due 9/6/26 to Basin Jameson 1076.

Deer Valley Lady 4218 - Lot 31



Deer Valley Rita 4118 - Lot 32



32
DVF

Deer Valley Rita 4118

DOB: 01-01-2024 Cow Reg: *20899483 Tattoo: 4118

#*G A R Home Town
+*H P C A VISION
20226737 +*H P C A Quantum 5479

#+*G A R Ashland
+*Chair Rock Sure Fire 6095
#*G A R Quantum
+*H P C A Sunrise 2172



#*Deer Valley Growth Fund
+*DEER VALLEY RITA 11154
20021535 *Deer Valley Rita 9224

#*Basin Payweight 1682
+*Deer Valley Rita 36113
#*Yon Chattooga E46
*Deer Valley Rita 5709

CED	BW	WW	YW	RADG	DMI	YH	SC	DOC	PAP	
+11	-1.2	+76	+149	+33	+2.10	+4	+60	+22	+37	
CLAW	ANGLE	HP	CEM	Milk	MW	MH	CW	MRB	RE	FAT
+59	+51	+11.2	+10	+43	+57	+2	+68	+1.04	+56	+0.069
HDSOK		SM	SW	SF	SG	SB	SC			
		+73	+96	+109	+67	+177	+303			

- ★ Rita 4118 is a calving-ease, PAP and SW prospect sired by the multi-trait highlight Vision, and stems from a fifth-generation Deer Valley Rita, Rita 11154.
- ★ Rita 4118 carries an ultrasound IMF ratio of 109. The dam of Lot 32 blends the premier female sires in the Deer Valley program—Growth Fund and Chattooga E46. The dam of Lot 32 posts an ultrasound IMF ratio 2@112.
- ★ Due 9/25/26 to 12/18/26 to Deer Valley Grand Slam 4183.

33
DVF

Deer Valley Rita 4219

DOB: 02-05-2024 Cow Reg: *20969271 Tattoo: 4219

#*G A R Proactive
+*G A R FREEDOM
19404851 +*RWA Fruition W2025

#*G A R Prophet
*G A R Daybreak 1521
+*G A R Fruition
*G A R Daybreak 2610



#*TEX Playbook 5437
+*DEER VALLEY RITA 0671
19940117 *Deer Valley Rita 61135

#*Basin Payweight 1682
+*Rita 1C43 of 9M26 Complete
#*Quaker Hill Rampage 0A36
*Deer Valley Rita 4272

CED	BW	WW	YW	RADG	DMI	YH	SC	DOC	PAP	
+5	+1.4	+85	+150	+29	+1.60	+1.0	+1.30	+22	+57	
CLAW	ANGLE	HP	CEM	Milk	MW	MH	CW	MRB	RE	FAT
+54	+58	+11.4	+12	+28	+101	+1.1	+76	+97	+79	+0.031
HDSOK		SM	SW	SF	SG	SB	SC			
		+64	+85	+121	+69	+191	+312			

- ★ Rita 4219 is a growth daughter of the fifth-generation Deer Valley Rita, Rita 0671, sired by the proven Grimmus Cattle Company roster member Freedom.
- ★ Rita 4219 records a birth ratio of 96, a weaning ratio of 114 and a yearling ratio of 106 while carrying ultrasound ratios IMF 99 and REA 100. The dam of Lot 33 blends the proven phenotype sire in the DVF roster Playbook and the multi-trait sire Rampage with a proven and productive CL Cattle Company female, Rita 4272. The dam of Lot 33 posts a BR 2@98, a WR 2@111 and a YR 2@109 while showing ultrasound ratios IMF 2@101 and REA 2@106.
- ★ Due 8/13/26 to Baldridge Incognito J852.

Deer Valley Rita 4219 - Lot 33



Deer Valley Rita 1130 - Lot 34





34
DV

Deer Valley Rita 1130

DOB: 01-05-2021 Cow Reg: +*20021558 Tattoo: 1130

#+*Basin Payweight 1682
#+*DEER VALLEY GROWTH FUND
18827828 +*Deer Valley Rita 36113

#*V A R Generation 2100
+*DEER VALLEY RITA 6257
18523600 +*BoBo Rita 1559

#+*Basin Payweight 0065
21AR O Lass 7017
#*Plattmere Weigh Up K360
+Deer Valley Rita 9457

#*Connealy Consensus 7229
+*Sandpoint Blackbird 8809
#*Summitcrest Complete 1P55
+DRMCTR 111 Rita 6108



CED	BW	WW	YW	RADG	DMI	YH	SC	DOC	PAP	
+10	+5	+77	+141	+32	+1.48	+1.0	+82	+14	+2.74	
CLAW	ANGLE	HP	CEM	Milk	MW	MH	CW	MRB	RE	FAT
+54	+62	+9.6	+14	+27	+71	+8	+67	+79	+47	+015
HOSOK		SM	SW	SF	SG	SB	SC			
		+57	+78	+116	+57	+173	+281			

- ★ Rita 1130 is a tremendous lead-off spring pair from the top of the Deer Valley spring calving program and is a direct daughter of the former Deer Valley donor in the BN Cattle and Terrell Land and Cattle programs, Rita 6257, and sired by the one-time breed registration leader, Growth Fund.
- ★ Rita 1130 balances a BR 2@99 with a YR 2@100 while carrying ultrasound ratios IMF 2@102 and REA 2@103. Rita 6257, the dam of Lot 34, is a direct daughter of the \$350,000 valued and now-deceased Deer Valley and Express Ranches donor Rita 1559, and sired by the \$250,000 Deer Valley balanced-trait sire Generation. The dam of Lot 34 posts ultrasound ratios IMF 7@110 and REA 7@105.
- ★ Has a 1/12/26 heifer calf, Lot 34A, by BA7 Oaks Bold Ruler, tattoo 6184.
- ★ Bred 4/1/26 to Yon Southern Rock.

Deer Valley Rita 1258 - Lot 35



- ★ Rita 1258 is a growth female produced by a proven fifth-generation Deer Valley Rita, Rita 72116, and sired by the longtime leader of the Deer Valley herd sire roster, Growth Fund.
- ★ Rita 1258 carries an ultrasound IMF ratio of 1@110. Rita 72116 stems from the family that produced the \$300,000 calving-ease specialist All In, and blends the balanced-trait sire Generation and the Pathfinder Sire Ten X. The dam of Lot 35 shows an ultrasound IMF ratio 2@105.
- ★ **Has a 2/13/26 heifer calf, Lot 35A, by Baldridge Incognito J852, tattoo 6235.**
- ★ **Bred 4/1/26 to Deer Valley Margin Call 4342.**

Deer Valley Rita 1258
 DOB: 02-16-2021 Cow Reg: *20021602 Tattoo: 1258

##*Basin Payweight 1682
 ##**DEER VALLEY GROWTH FUND
 18827828 +*Deer Valley Rita 36113

##*V A R Generation 2100
 *DEER VALLEY RITA 72116
 18824006 *Deer Valley Rita 51189

##*Basin Payweight 0065
 21AR O Lass 7017
 ##*Plattemere Weigh Up K360
 +Deer Valley Rita 9457

##*Connealy Consensus 7229
 +*Sandpoint Blackbird 8809
 ##*A A R Ten X 7008 S A
 +*Deer Valley Rita 31132

CED	BW	WW	YW	RADG	DMI	YH	SC	DOC	PAP	
+9	+1.0	+80	+141	+28	+1.35	+4	+90	+22	+3.18	
CLAW	ANGLE	HP	CEM	Milk	MW	MH	CW	MRB	RE	FAT
+53	+44	+8.2	+12	+20	+80	+5	+61	+93	+71	+035
HDSOK		SM	SW	SF	SG	SB	SC			
HDSOK		+56	+73	+111	+66	+178	+287			

Deer Valley Rita 11154
 DOB: 01-26-2021 Cow Reg: *20021535 Tattoo: 11154

##*Basin Payweight 1682
 ##**DEER VALLEY GROWTH FUND
 18827828 +*Deer Valley Rita 36113

##*Yon Chattooga E46
 *DEER VALLEY RITA 9224
 19780195 *Deer Valley Rita 5709

##*Basin Payweight 0065
 21AR O Lass 7017
 ##*Plattemere Weigh Up K360
 +Deer Valley Rita 9457

##*Connealy Comrade 1385
 +*Yon Sally C200
 ##*JMB Traction 292
 *DVF Rita 0699

CED	BW	WW	YW	RADG	DMI	YH	SC	DOC	PAP	
+12	+4	+76	+148	+31	+2.10	+4	+78	+23	+2.00	
CLAW	ANGLE	HP	CEM	Milk	MW	MH	CW	MRB	RE	FAT
+49	+54	+9.6	+10	+34	+78	+4	+63	+49	+62	+074
HDSOK		SM	SW	SF	SG	SB	SC			
HDSOK		+58	+82	+105	+40	+146	+247			

Deer Valley Rita 11154 - Lot 36



- ★ Rita 11154 blends three generations of foundation Deer Valley sires—Growth Fund, Chattooga E46, and Traction with a second-generation Deer Valley Rita, Rita 0699.
- ★ Rita 1154 posts an ultrasound IMF ratio 2@112.
- ★ **Has a 3/12/26 heifer calf, Lot 36A, by BA7 Oaks Bold Ruler, tattoo 6331.**

37
DF

Deer Valley Henrietta 1179

DOB: 01-11-2021 Cow Reg: +*20021574 Tattoo: 1179

#+*Basin Payweight 1682
#*DEER VALLEY GROWTH FUND
18827828 +*Deer Valley Rita 36113

#+*Basin Payweight 0065
21AR O Lass 7017
#*Plattemere Weigh Up K360
+Deer Valley Rita 9457

#*Deer Valley All In
#*DEER VALLEY HENRIETTA 6104
18519495 +*Sitz Henrietta Pride 643T

#*A A R Ten X 7008 S A
+*Deer Valley Rita 0274
#*Connealy Onward
*Sitz Henrietta Pride 81M

CED	BW	WW	YW	RADG	DMI	YH	SC	DOC	PAP	
+9	+1.9	+82	+142	+26	+1.78	+7	+1.62	+6	+2.42	
CLAW	ANGLE	HP	CEM	Milk	MW	MH	CW	MRB	RE	FAT
+49	+5.0	+8.8	+9	+23	+88	+4	+57	+52	+77	+053
SM	SW	SF	SG	SB	SC					
+43	+77	+92	+45	+138	+222					



- ★ Henrietta 1179 is a growth female from the herd sire producing Henrietta Pride family produced by the tremendous producing Henrietta 6104 and sired by the proven leader of the Deer Valley program, Growth Fund.
- ★ Henrietta 1179 records a BR 2@95, a WR 2@110 and a YR 1@101. The dam of Lot 37 is a direct daughter of the legendary Deer Valley, Express Ranches, and Pollard Farms matriarch, Henrietta Pride 643T, by the calving-ease specialist, All In. The dam of Lot 37 posts a WR 4@103 and a YR 2@105 while showing ultrasound ratios IMF 1@111 and REA 1@119.
- ★ Has a 1/15/26 heifer calf, Lot 37A, by Antczak Pathway, tattoo 61111.
- ★ Bred 4/1/26 to Deer Valley Margin Call 4342.

Deer Valley Henrietta 1179 - Lot 37



EPF Blackbird H111 - Lot 39



38
DF

Deer Valley Blackbird 11227

DOB: 01-01-2021 Cow Reg: +*20084266 Tattoo: 11227

#+*Basin Payweight 1682
#*DEER VALLEY GROWTH FUND
18827828 +*Deer Valley Rita 36113

#+*Basin Payweight 0065
21AR O Lass 7017
#*Plattemere Weigh Up K360
+Deer Valley Rita 9457

#+*WR Journey-1X74
#*VINTAGE BLACKBIRD 6039
18378633 +*Sandpoint Blackbird 8809

*B/R Future Direction 4268
2 Bar 5050 New Design 7831
#*Connealy Onward
+Riverbend Blackbird 4301

CED	BW	WW	YW	RADG	DMI	YH	SC	DOC	PAP	
+6	+1.2	+74	+129	+27	+1.04	+5	+34	+30	+72	
CLAW	ANGLE	HP	CEM	Milk	MW	MH	CW	MRB	RE	FAT
+40	+38	+11.1	+13	+24	+63	+6	+55	+47	+1.16	+012
SM	SW	SF	SG	SB	SC					
+84	+73	+103	+50	+154	+284					



- ★ Blackbird 11227 is a direct daughter of the \$90,000 former headliner of the Blackbird family in the Deer Valley program, Blackbird 6039, and sired by the proven Select Sires roster leader Growth Fund.
- ★ Blackbird 11227 carries an ultrasound REA ratio 2@101. Blackbird 6039, the dam of Lot 38, is a direct daughter of the \$10 million producer and leader of the Vintage Angus Ranch and Herbster Angus programs Blackbird 8809, sired by the outcross Express Ranches roster member, Journey.
- ★ Has a 3/27/26 bull calf, Lot 38A, by ST Wizard 1585, tattoo 6364.

39
DF

EPF Blackbird H111

DOB: 08-31-2020 Cow Reg: +*19883305 Tattoo: H111

#+*Basin Payweight 1682
#*DEER VALLEY GROWTH FUND
18827828 +*Deer Valley Rita 36113

#+*Basin Payweight 0065
21AR O Lass 7017
#*Plattemere Weigh Up K360
+Deer Valley Rita 9457

#*V A R Discovery 2240
#*SJH DISCOVERY OF 2318 6584
18836282 +*Spruce Mtn Blackbird 2318

#*A A R Ten X 7008 S A
+*Deer Valley Rita 0308
#*Summitcrest Complete 1P55
+*Sandpoint Blackbird 8809

CED	BW	WW	YW	RADG	DMI	YH	SC	DOC	PAP	
+9	+1.5	+81	+151	+36	+1.32	+1.0	+28	+14	+3.41	
CLAW	ANGLE	HP	CEM	Milk	MW	MH	CW	MRB	RE	FAT
+61	+55	+12.8	+11	+22	+111	+6	+82	+85	+92	+033
SM	SW	SF	SG	SB	SC					
+45	+69	+146	+65	+211	+319					



- ★ Blackbird H111 is a balanced-trait daughter of the foundation Blackbird in the Edisto Pines Farm program, 6584, and sired by the proven female sire in the Select Sires roster, Growth Fund.
- ★ Blackbird H111 shows an ultrasound IMF ratio 1@156. 6584, the dam of Lot 39, is a direct daughter of the \$220,000 valued former Spruce Mountain Ranch and Express Ranches headliner Blackbird 2318, and sired by the legendary female sire Discovery. The dam of Lot 39 records a BR 1@91 and a WR 1@101 while carrying an ultrasound IMF ratio 12@110.
- ★ Has a 1/10/26 bull calf, Lot 39A, by BNWZ Validity 2491, tattoo 6171.
- ★ Bred 4/1/26 to Yon Southern Rock.



Deer Valley Henrietta 1284 - Lot 40



- ★ Henrietta 1284 is a maternal sister to Lot 37, and blends the proven multi-trait female sire Home Town with the second-generation DVF donor Henrietta 6104.
- ★ Henrietta 1284 posts a WR 1@105 while carrying an ultrasound REA ratio 1@120. The dam of Lot 40 records a WR 4@103 and a YR 2@105 while showing ultrasound ratios IMF 1@111 and REA 1@119.
- ★ Has a 1/15/26 heifer calf, Lot 40A, by Antczak Pathway, tattoo 61109.
- ★ Bred 4/1/26 to Yon Southern Rock.

40 Deer Valley Henrietta 1284
DOB: 02-18-2021 Cow Reg: +*20059936 Tattoo: 1284

#+*G A R Ashland *G A R Early Bird
 #*G A R HOME TOWN +*Chair Rock Ambush 1018
 19266718 +*Chair Rock Sure Fire 6095 +*G A R Sure Fire
 +*Chair Rock Progress 3005
 #*Deer Valley All In #*A A R Ten X 7008 S A
 +*DEER VALLEY HENRIETTA 6104 +*Deer Valley Rita 0274
 18519495 +*Sitz Henrietta Pride 643T *Connealy Onward
 *Sitz Henrietta Pride 81M



CED	BW	WW	YW	RADG	DMI	YH	SC	DOC	PAP	
+17	-1.1	+54	+105	+26	+93	+3	+85	+19	+79	
CLAW	ANGLE	HP	CEM	Milk	MW	MH	CW	MRB	RE	FAT
+63	+60	+13.2	+14	+29	+27	-1	+50	+1.09	+1.06	+010
HOSK		\$M	\$W	\$F	\$G	\$B	\$C			
		+77	+59	+108	+80	+188	+321			

41 SC Hometown 26I
DOB: 01-06-2021 Cow Reg: +*19943540 Tattoo: 26I

#+*G A R Ashland *G A R Early Bird
 #*G A R HOME TOWN +*Chair Rock Ambush 1018
 19266718 +*Chair Rock Sure Fire 6095 +*G A R Sure Fire
 +*Chair Rock Progress 3005
 #+*G A R Prophet #C R A Bextor 872 5205 608
 +*BJ PROPHET 5275 +G A R Objective 1885
 18531298 *BJ Complete 1165 #*Summitcrest Complete 1P55
 +*BJ 5050 New Design 9164



CED	BW	WW	YW	RADG	DMI	YH	SC	DOC	PAP	
+11	+1	+79	+135	+26	+1.58	+7	+93	+21	-1.68	
CLAW	ANGLE	HP	CEM	Milk	MW	MH	CW	MRB	RE	FAT
+48	+37	+13.5	+12	+29	+58	+4	+52	+93	+85	-058
ANGUS		\$M	\$W	\$F	\$G	\$B	\$C			
		+90	+89	+87	+74	+161	+299			

SC Hometown 26I - Lot 41



- ★ Owned with 4 Sons Investments.
- ★ Hometown 26I is a calving-ease and PAP female from the heart of the Deer Valley spring calving program and blends the herd sire producing Knoll Crest Farms headliner Prophet 5275, and sired by the proven female sire Home Town.
- ★ Hometown 26I carries an ultrasound IMF ratio 4@111. Prophet 5275, the dam of Lot 41, combines the foundation carcass sires Prophet and Complete, and is the dam of the proven \$M leader in the Knoll Crest Farms and Connealy Angus programs, Surpass. The dam of Lot 41 shows ultrasound ratios IMF 49@105 and REA 49@100.
- ★ Has a 1/14/26 bull calf, Lot 41A, by GAR Wallace, tattoo 61108.
- ★ Bred 4/1/26 to Baldrige Incognito J852.

Deer Valley Henrietta 1110 - Lot 43



42 Deer Valley Rita 1191
 DOB: 01-13-2021 Cow Reg: *20021578 Tattoo: 1191

##*Baldridge Colonel C251 #+baldridge Xpand x743
 #*DEER VALLEY BRIGADE 81247 *Baldridge Isabel Y69
 19469706 +*Deer Valley Rita 36142 #*Plattmere Weigh Up K360
 +Deer Valley Rita 9457
 ##*TEX Playbook 5437 #+*Basin Payweight 1682
 #*DEER VALLEY RITA 7677 +*Rita 1C43 of 9M26 Complete
 19097071 *CoX 3175 Rita 5606 #*V A R Discovery 2240
 *CoX Rita Y13D 3175

CED	BW	WW	YW	RADG	DMI	YH	SC	DOC	PAP	
+9	+9	+71	+131	+28	+1.60	+4	+96	+21	+1.14	
CLAW	ANGLE	HP	CEM	Milk	MW	MH	CW	MRB	RE	FAT
+32	+41	+13.0	+16	+29	+26	+1	+59	+57	+61	+0.36
HDSOK		SM	SW	SF	SG	SB	SC			
HDSOK		+102	+79	+108	+47	+155	+303			

- ★ Rita 1191 is a low-birth daughter of the proven Deer Valley herd sire Brigade 81247, and stems from a proven daughter of the phenotype leader of the Deer Valley roster Playbook.
- ★ The dam of Lot 42 balances a BR 2@95 with a YR 1@105.
- ★ Has a 2/1/26 heifer calf, Lot 42A, by Baldridge Incognito J852, tattoo 6204.
- ★ Bred 4/1/26 to Deer Valley Margin Call 4342.

43 Deer Valley Henrietta 1110
 DOB: 01-02-2021 Cow Reg: +*20068638 Tattoo: 1110

##Mohnen Substantial 272 #*Benfield Substance 8506
 #*SITZ STELLAR 726D Mohnen Glyn Mawr Elba 1758
 18397542 *SITZ Pride 200B #*Connealy Final Product
 #+*Sitz Pride 308Y
 ##Deer Valley All In #*A A R Ten X 7008 S A
 #*DEER VALLEY HENRIETTA 6145 +*Deer Valley Rita 0274
 18693032 +*Sitz Henrietta Pride 643T #*Connealy Onward
 #*Sitz Henrietta Pride 81M

CED	BW	WW	YW	RADG	DMI	YH	SC	DOC	PAP	
+10	-7	+68	+121	+23	+1.48	+7	+37	+9	-1.79	
CLAW	ANGLE	HP	CEM	Milk	MW	MH	CW	MRB	RE	FAT
+50	+45	+13.1	+15	+29	+75	+6	+49	+35	+52	+0.13
HDSOK		SM	SW	SF	SG	SB	SC			
HDSOK		+55	+72	+89	+37	+126	+218			

- ★ Henrietta 1110 is a calving-ease and PAP third-generation DVF Henrietta Pride and stems from a sensational dam, Henrietta 6145, and sired by the outcross PAP sire Stellar 726D.
- ★ Henrietta 6145, the dam of Lot 43, is a direct daughter of the legendary herd sire producing Henrietta Pride 643T, and sired by the \$300,000 valued calving-ease specialist All In. The dam of Lot 43 records a WR 4@105 and a YR 1@99 while carrying an ultrasound REA ratio 2@102.
- ★ Has a 1/14/26 bull calf, Lot 43A, by BNWZ Validity 2491, tattoo 6195.
- ★ Bred 4/1/26 to Yon Southern Rock.

Deer Valley Rita 11137 - Lot 45



Deer Valley Ideal 11146 - Lot 46



45
DVF
Deer Valley Rita 11137
DOB: 01-25-2021 Cow Reg: *20068620 Tattoo: 11137

#*Mohnen Substantial 272
#*SITZ STELLAR 726D
18397542 *SITZ Pride 200B

#*K C F Bennett Fortress
+*DEER VALLEY RITA 7349
18826915 +*Deer Valley Rita 36113

#*Benfield Substance 8506
Mohnen Glyn Mawr Elba 1758
#*Connealy Final Product
#*Sitz Pride 308Y

#*Connealy Consensus
*Thomas Patricia 9705
#*Plattmehere Weigh Up K360
+Deer Valley Rita 9457



CED	BW	WW	YW	RADG	DMI	YH	SC	DOC	PAP	
+9	-9	+81	+148	+31	+1.86	+8	+65	+13	+1.57	
CLAW	ANGLE	HP	CEM	Milk	MW	MH	CW	MRB	RE	FAT
+4.4	+4.4	+12.0	+11	+25	+121	+1.3	+65	+71	+60	+0.04
SM		SW		SF		SG		SB		SC
+44		+76		+110		+56		+167		+261

- ★ Rita 11137 is a low-birth and growth female produced by a maternal sister to the registration leader Growth Fund, Rita 7349, and sired by the proven PAP leader Stellar 726D.
- ★ Rita 11137 posts ultrasound ratios IMF 1@100 and REA 1@100. Rita 7349, the donor dam of Lot 45, is featured in the Independence Ridge Farm program and blends the female sire Fortress with the herd sire maker Rita 36113. The dam of Lot 45 shows ultrasound ratios IMF 1@128 and REA 1@101.
- ★ Has a 2/9/26 bull calf, Lot 45A, by Baldridge Incognito J852, tattoo 6219.
- ★ Bred 4/1/26 to Yon Southern Rock.

47
DVF
Deer Valley Rita 11131
DOB: 01-22-2021 Cow Reg: *20170647 Tattoo: 11131

#*Mohnen Substantial 272
#*SITZ STELLAR 726D
18397542 *SITZ Pride 200B

#*K C F Bennett Fortress
+*DEER VALLEY RITA 78115
19690644 +*Deer Valley Rita 4166

#*Benfield Substance 8506
Mohnen Glyn Mawr Elba 1758
#*Connealy Final Product
#*Sitz Pride 308Y

#*Connealy Consensus
*Thomas Patricia 9705
#*Plattmehere Weigh Up K360
+*Deer Valley Rita 1126

CED	BW	WW	YW	RADG	DMI	YH	SC	DOC	PAP	
+0	+1.8	+82	+150	+30	+1.98	+8	+1.36	+10	-2.55	
CLAW	ANGLE	HP	CEM	Milk	MW	MH	CW	MRB	RE	FAT
+4.9	+4.5	+12.2	-3	+23	+113	+1.0	+60	+54	+66	+0.22
SM		SW		SF		SG		SB		SC
+37		+71		+98		+47		+146		+226



- ★ Rita 11131 is a growth and PAP daughter of the proven fourth-generation Deer Valley Rita, Rita 78115, and sired by the proven female sire Stellar 726D.
- ★ Rita 78115, the dam of Lot 47, blends the featured female sires Fortress and Weigh Up with the herd sire producing Rita 1126. The dam of Lot 47 balances a BR 2@96 with a YR 2@103 while showing an ultrasound IMF ratio 1@114.
- ★ Has a 2/13/26 heifer calf, Lot 47A, by Antczak Pathway, tattoo 6234.
- ★ Bred 4/1/26 to Yon Southern Rock.

46
DVF
Deer Valley Ideal 11146
DOB: 01-25-2021 Cow Reg: *20068561 Tattoo: 11146

#*Mohnen Substantial 272
#*SITZ STELLAR 726D
18397542 *SITZ Pride 200B

+*Deer Valley Fox Trot 5327
+*DEER VALLEY IDEAL 8849
19394512 *Deer Valley Ideal 51145

#*Benfield Substance 8506
Mohnen Glyn Mawr Elba 1758
#*Connealy Final Product
#*Sitz Pride 308Y

#*SandPoint Butkus X797
+*Sitz Henrietta Pride 643T
#*Plattmehere Weigh Up K360
+*Deer Valley Ideal 1198

CED	BW	WW	YW	RADG	DMI	YH	SC	DOC	PAP	
+0	+2.2	+72	+121	+25	+94	+4	+95	+23	+72	
CLAW	ANGLE	HP	CEM	Milk	MW	MH	CW	MRB	RE	FAT
+4.7	+4.3	+11.5	+3	+20	+76	+4	+54	+31	+64	+0.43
SM		SW		SF		SG		SB		SC
+64		+61		+101		+34		+136		+240

- ★ Ideal 11146 is a balanced-trait female from the feed efficiency leading Ideal family and stems from a fourth-generation Deer Valley Ideal, Ideal 8849, sired by the outcross headliner Stellar 726D.
- ★ Ideal 8849, the dam of Lot 46, combines the DVF herd sires Fox Trot 5327, Weigh Up and the \$100,000 Ultimate with the proven cornerstone donor Ideal 533P. The dam of Lot 46 posts a WR 2@102 and a YR 3@103 while carrying an ultrasound REA ratio 1@108.
- ★ Has a 4/15/26 bull calf, Lot 46A, by Deer Valley Baseline 21007, tattoo 6413.

Pollard Henrietta Pride 1090 - Lot 51



48 DVF **Deer Valley Rita 11239**
 DOB: 01-18-2021 Cow Reg: +*20115722 Tattoo: 11239

Poss Easy Impact 0119 #Poss Total Impact 745
 #*BALDRIDGE ALTERNATIVE E125 Poss Elmaretta 736
 18837398 Baldridge Blackbird A030 #*Hoover Dam
 Baldridge Blackbird X89
 #*K C F Bennett Fortress #*Connealy Consensus
 #*DEER VALLEY RITA 7349 *Thomas Patricia 9705
 18826915 +*Deer Valley Rita 36113 #*Plattmere Weigh Up K360
 +Deer Valley Rita 9457

CED	BW	WW	YW	RADG	DMI	YH	SC	DOC	PAP	
+7	-4	+59	+107	+25	+85	-.2	+97	+20	+1.34	
CLAW	ANGLE	HP	CEM	Milk	MW	MH	CW	MRB	RE	FAT
+4.5	+5.3	+10.4	+11	+20	+54	-.1	+39	+90	+50	+0.26
HDSOK		SM	SW	SF	SG	SB	SC			
HDSOK		+53	+52	+90	+62	+153	+251			

- ★ Rita 11239 is a maternal sister to Lot 45 and stems from the maternal sister to the proven Deer Valley and Select Sire roster members Growth Fund and Wall Street, Rita 7349, and sired by the outcross Baldridge Performance Angus and Express Ranches outcross female sire Alternative.
- ★ Rita 11239 posts a WR 2@99 and a YR 2@99. The dam of Lot 48 carries ultrasound ratios IMF 1@128 and REA 1@101.
- ★ Has a 3/26/26 bull calf, Lot 48A, by ST Wizard 1585, tattoo 6360.

49 DVF **Deer Valley Henrietta 1824**
 DOB: 10-04-2021 Cow Reg: +*20340776 Tattoo: 1824

Poss Easy Impact 0119 #Poss Total Impact 745
 #*BALDRIDGE ALTERNATIVE E125 Poss Elmaretta 736
 18837398 Baldridge Blackbird A030 #*Hoover Dam
 Baldridge Blackbird X89
 #*Quaker Hill Rampage 0A36 #MCC Daybreak
 #*DEER VALLEY HENRIETTA 71164 +*QHF Blackcap 6E2 of 4V16 4355
 18827398 +*Sitz Henrietta Pride 643T #*Connealy Onward
 *Sitz Henrietta Pride 81M

CED	BW	WW	YW	RADG	DMI	YH	SC	DOC	PAP	
+8	+7	+66	+115	+24	+96	-.2	+74	+18	+3.7	
CLAW	ANGLE	HP	CEM	Milk	MW	MH	CW	MRB	RE	FAT
+3.8	+5.5	+8.3	+12	+15	+82	+0	+42	+1.06	+86	-.007
HDSOK		SM	SW	SF	SG	SB	SC			
HDSOK		+40	+49	+87	+77	+165	+254			

- ★ Henrietta 1824 is a balanced-trait third-generation member of the Deer Valley Henrietta Pride family, and blends the outcross female sire Alternative with a direct daughter of the legendary Henrietta Pride 643T by the Mapleton Farm and Quaker Hill Farms sire Rampage.
- ★ Has a 2/1/26 bull calf, Lot 49A, by Antczak Pathway, tattoo 6202.
- ★ Bred 4/1/26 to Deer Valley Margin Call 4342.

50 DVF **EZAR Primrose 1072**
 DOB: 01-06-2021 Cow Reg: *20056606 Tattoo: 1072

#*Connealy Spur #*Connealy Stimulus 8419
 #*VERMILION SPUR E143 #Jazza of Conanga 8594
 18838120 Vermilion Blackbird 4468 KG Sure Shot 0015
 Vermilion Blackbird 1465
 #*TEX Playbook 5437 #*Basin Payweight 1682
 #*EPF PRIMROSE 8801 #*Rita 1C43 of 9M26 Complete
 19063641 *Vintage Primrose 6045 #*V A R Foreman 3339
 *Vintage Primrose 4085

CED	BW	WW	YW	RADG	DMI	YH	SC	DOC	PAP	
+6	+2.1	+68	+123	+28	+103	+6	+96	+29	+4.45	
CLAW	ANGLE	HP	CEM	Milk	MW	MH	CW	MRB	RE	FAT
+6.0	+5.3	+14.2	+17	+43	+26	+2	+57	+38	+64	+0.30
HDSOK		SM	SW	SF	SG	SB	SC			
HDSOK		+88	+86	+106	+38	+145	+276			

- ★ Primrose 1072 is a balanced-trait daughter of the proven and productive Primrose 8801, and sired by the outcross female sire Spur E143.
- ★ Primrose 1072 records a WR 2@116 and a YR 2@111 while carrying an ultrasound REA ratio 5@104. Primrose 8801, the dam of Lot 50, is an N Style Cattle highlight of Primrose 6045, and sired by the proven female sire in the Deer Valley roster, Playbook. The dam of Lot 50 posts a WR 2@106 and a YR 2@105.
- ★ Has a 1/11/26 heifer calf, Lot 50A, by BA7 Oaks Bold Ruler, tattoo 6180.
- ★ Bred 4/1/26 to Baldridge Incognito J852.

51 DVF **Pollard Henrietta Pride 1090**
 DOB: 02-11-2021 Cow Reg: +*20001595 Tattoo: 1090

+*G A R Sure Fire 6404 #*G A R Sure Fire
 #*GB FIREBALL 672 #*G A R Complete N281
 18690054 *GB Anticipation 432 #*G A R Anticipation
 GB Ambush 269
 #*SAC Conversation *Silveiras Conversion 8064
 #*PF HENRIETTA PRIDE 66B4 #*Laffins Farrah 0252
 18686138 +*PF 5682 Henrietta Pride 0533 #*S A V Bismarck 5682
 +*Sitz Henrietta Pride 643T

CED	BW	WW	YW	RADG	DMI	YH	SC	DOC	PAP	
+6	+1.4	+62	+118	+30	+115	+5	+1.68	+13	+3.22	
CLAW	ANGLE	HP	CEM	Milk	MW	MH	CW	MRB	RE	FAT
+5.5	+5.0	+10.8	+9	+31	+57	+3	+57	+1.31	+1.32	+0.07
ANGUS		SM	SW	SF	SG	SB	SC			
ANGUS		+51	+64	+111	+94	+206	+318			

- ★ Henrietta 1090 is a Marb. and RE daughter of the proven carcass, \$B and \$C sire Fireball, and stems from an outcross dam in the third-generation Pollard Farms donor Henrietta Pride 66B4.
- ★ Henrietta Pride 1090 posts ultrasound ratios IMF 2@104 and REA 2@106. The dam of Lot 51 carries an ultrasound REA ratio 2@106.
- ★ Has a 1/12/26 heifer calf, Lot 51A, by Baldridge Incognito J852, tattoo 6196.
- ★ Bred 4/1/26 to HNM Kevlar 265.

Deer Valley Rita 1329 - Lot 52



52 **Deer Valley Rita 1329**
 DOB: 03-10-2021 Cow Reg: *20021625 Tattoo: 1329

#*Connealy Comrade 1385 #*Connealy Consensus 7229
 Happy Gee of Conanga 919
 #*YON CHATTOOGA E46 #+*G A R Prophet
 18810548 +*Yon Sally C200 *Yon Sally Z371
 #+*TEX Playbook 5437 #+*Basin Payweight 1682
 #*DEER VALLEY RITA 9105 #+*Rita 1C43 of 9M26 Complete
 19466521 +*Deer Valley Rita 6103 #*Plattmere Weigh Up K360
 *Deer Valley Rita 3166

CED	BW	WW	YW	RADG	DMI	YH	SC	DOC	PAP	
+14	-1.2	+59	+108	+27	+63	-2	-.43	+20	+3.13	
CLAW	ANGLE	HP	CEM	Milk	MW	MH	CW	MRB	RE	FAT
+51	+42	+10.5	+9	+40	+23	-1	+34	+61	+96	-.023
HDSOK		SM	SW	SF	SG	SB	SC			
		+68	+80	+77	+57	+135	+243			

- ★ Rita 1329 is a calving-ease female who blends three generations of proven Deer Valley female sires Chattooga E46, Playbook, and Weigh Up with the herd-sire producing Rita 3166.
- ★ Rita 1329 records a BR 2@98, a WR 2@104 and a YR 1@100 while carrying ultrasound ratios IMF 2@116 and REA 2@99. The dam of Lot 52 posts a WR 32100 and a YR 2@106 while showing ultrasound ratios IMF 16@102 and REA 16@101.
- ★ Has a 1/8/26 heifer calf, Lot 52A, by G A R Fireproof, tattoo 6159.
- ★ Bred 4/1/26 to Deer Valley Margin Call 4342.

54 **Deer Valley Lady 1277**
 DOB: 02-17-2021 Cow Reg: *20061403 Tattoo: 1277

#*Connealy Confidence Plus #*Connealy Confidence 0100
 Elbanna of Conanga 1209
 #+*E&B PLUS ONE #+E&B 1680 Precision 1023
 19196960 #+E&B Lady 1023 Precision 936 E&B Lady 878 New Design 441
 #*Plattmere Weigh Up K360 #*Sitz Upward 307R
 #*DEER VALLEY LADY 5214 #Barbara of Plattmere 337
 18185516 *Deer Valley Lady 1102 #S AV Pioneer 7301
 #+*Werner Lady 919

CED	BW	WW	YW	RADG	DMI	YH	SC	DOC	PAP	
+4	+2.2	+79	+138	+29	+1.41	+3	+0.2	+22	+3.21	
CLAW	ANGLE	HP	CEM	Milk	MW	MH	CW	MRB	RE	FAT
+52	+50	+4.7	+2	+19	+69	+6	+56	+45	+1.13	-.050
HDSOK		SM	SW	SF	SG	SB	SC			
		+41	+69	+100	+54	+154	+241			

- ★ Lady 1277 is a balanced-trait daughter of the female sire Plus One and stems from a third-generation Lady in the DVF program, Lady 5214.
- ★ Lady 5214, the dam of Lot 54, is a proven daughter of the Deer Valley sire Weigh Up and stems from a direct daughter of the prolific former Deer Valley donor, Lady 919 by Pioneer. The dam of Lot 54 balances a BR 3@98 with a YR 3@106 while showing ultrasound ratios IMF 7@106 and REA 7@104.
- ★ Has a 3/1/26 bull calf, Lot 54A, by GAR Powercat, tattoo 6301.

53 **Deer Valley Rita 1307**
 DOB: 03-04-2021 Cow Reg: *20021614 Tattoo: 1307

#*Connealy Comrade 1385 #*Connealy Consensus 7229
 Happy Gee of Conanga 919
 #*YON CHATTOOGA E46 #+*G A R Prophet
 18810548 +*Yon Sally C200 *Yon Sally Z371
 #*Woodhill Blueprint #*Connealy Confidence Plus
 #*DEER VALLEY RITA 9177 #*Woodhill Evergreen Z291-B233
 19466610 +*Deer Valley Rita 6105 #*Plattmere Weigh Up K360
 *Deer Valley Rita 3166

CED	BW	WW	YW	RADG	DMI	YH	SC	DOC	PAP	
+4	+1.7	+74	+128	+27	+1.13	+4	-.57	+24	+2.79	
CLAW	ANGLE	HP	CEM	Milk	MW	MH	CW	MRB	RE	FAT
+55	+42	+13.6	+0	+35	+78	+7	+61	+52	+81	-.009
HDSOK		SM	SW	SF	SG	SB	SC			
		+63	+82	+107	+50	+158	+268			

- ★ Rita 1307 is a balanced-trait female who stems from the herd sire producing Rita 3166 and blends the foundation Deer Valley female sires Chattooga E46, Blueprint, and Weigh Up.
- ★ Rita 1307 records a WR 2@108 and a YR 2@107 while showing ultrasound ratios IMF 2@100 and REA 2@106. The dam of Lot 53 posts a WR 1@103 and a YR 1@101.
- ★ Has a 2/12/26 bull calf, Lot 53A, by Deer Valley Politician 3945, tattoo 6228.
- ★ Bred 4/1/26 to Deer Valley Margin Call 4342.

Deer Valley Lady 1277 - Lot 54





Audley Henrietta Pride H102 - Lot 55

55 **Audley Henrietta Pride H102**
 DOB: 03-21-2020 Cow Reg: +*19752058 Tattoo: H102

#*Connealy Confidence Plus #*Connealy Confidence 0100
 #+*E&B PLUS ONE Elbanna of Conanga 1209
 19196960 #+E&B Lady 1023 Precision 936 #+E&B 1680 Precision 1023
 E&B Lady 878 New Design 441
 #*V A R Discovery 2240 #*A A R Ten X 7008 S A
 +*VINTAGE HENRIETTA PRIDE 5010 #*Deer Valley Rita 0308
 18066031 +*PF CC&7 Henrietta Pride 1044 #*SydGen C C & 7
 #*Sitz Henrietta Pride 643T



CED	BW	WW	YW	RADG	DMI	YH	SC	DOC	PAP	
+7	+2.1	+79	+140	+32	+99	+6	+20	+26	+3.92	
CLAW	ANGLE	HP	CEM	Milk	MW	MH	CW	MRB	RE	FAT
+4.5	+38	+10.7	+7	+23	+75	+6	+54	+86	+54	+0.25
ANGUS	SM	SW	SF	SG	SB	SC				
	+71	+73	+104	+61	+165	+285				

- ★ Owned with Britt Angus Farms.
- ★ Henrietta Pride H102 is a direct daughter of the \$340,000 valued headliner of the Audley Farm and Spruce Mountain Ranch joint embryo programs Henrietta Pride 5010, and sired by the balanced-trait female sire Plus One.
- ★ Henrietta Pride H102 carries an ultrasound IMF ratio 2@107. The dam of Lot 55 posts a BR 3@99 and a WR 3@102.
- ★ **Due 4/16/26 to Deer Valley Baseline 21007.**

56 **Deer Valley Rita 1293**
 DOB: 02-19-2021 Cow Reg: *20089452 Tattoo: 1293

#*Connealy Confidence Plus #*Connealy Confidence 0100
 #+*E&B PLUS ONE Elbanna of Conanga 1209
 19196960 #+E&B Lady 1023 Precision 936 #+E&B 1680 Precision 1023
 E&B Lady 878 New Design 441
 #*Plattermere Weigh Up K360 #*Sitz Upward 307R
 +*DEER VALLEY BLACKCAP 87157 #Barbara of Plattermere 337
 19394468 Deer Valley Blackcap 51169 #+*SandPoint Butkus X797
 TRM Blackcap 120



CED	BW	WW	YW	RADG	DMI	YH	SC	DOC	PAP	
+4	+2.9	+65	+115	+31	+41	+1	-.60	+19	+2.70	
CLAW	ANGLE	HP	CEM	Milk	MW	MH	CW	MRB	RE	FAT
+5.1	+56	+12.9	+4	+28	+47	+2	+46	+73	+92	+0.01
HDSOK	SM	SW	SF	SG	SB	SC				
	+66	+63	+100	+61	+161	+275				

- ★ Rita 1293 is a productive balanced-trait female produced by a third-generation Deer Valley Rita, Rita 87157, and sired by the female sire Plus One.
- ★ Rita 1293 posts a WR 2@100. Rita 87157, the dam of Lot 56, blends the proven Deer Valley herd sires Weigh Up and Butkus X797 with the proven former Deer Valley donor Blackcap 120. The dam of Lot 56 records a WR 3@103 and a YR 1@116 while showing ultrasound ratios IMF 1@115 and REA 1@110.
- ★ **Has a 1/11/26 heifer calf, Lot 56A, by Deer Valley Diplomat 3322, tattoo 6179.**
- ★ **Bred 4/1/26 to Yon Southern Rock.**



Deer Valley Rita 1293 - Lot 56



Deer Valley Rita 11237 - Lot 57

57 **Deer Valley Rita 11237**
 DOB: 01-18-2021 Cow Reg: +*20088184 Tattoo: 11237

#*Connealy Confidence Plus #*Connealy Confidence 0100
 #+*E&B PLUS ONE Elbanna of Conanga 1209
 19196960 #+E&B Lady 1023 Precision 936 #+E&B 1680 Precision 1023
 E&B Lady 878 New Design 441
 #*Plattermere Weigh Up K360 #*Sitz Upward 307R
 +*DEER VALLEY RITA 6225 #Barbara of Plattermere 337
 19581412 +*Deer Valley Rita 3415 #*Connealy Impression
 +Deer Valley Rita 8517

CED	BW	WW	YW	RADG	DMI	YH	SC	DOC	PAP	
+9	-.1	+60	+108	+26	+90	+5	-.43	+14	+2.65	
CLAW	ANGLE	HP	CEM	Milk	MW	MH	CW	MRB	RE	FAT
+5.5	+48	+8.6	+4	+31	+11	+1	+45	+72	+61	+0.49
HDSOK	SM	SW	SF	SG	SB	SC				
	+63	+72	+92	+53	+146	+252				

- ★ Rita 11237 is a fifth-generation Deer Valley Rita and blends the female sire Plus One and the proven phenotype female sires Weigh Up and Impression with a direct daughter of the legendary EXT 614, the \$130,000 valued Rita 8517.
- ★ Rita 11237 carries an ultrasound IMF ratio 2@105. The dam of Lot 57 posts a BR 2@94 and a WR 1@115 while showing ultrasound ratios IMF 6@99 and REA 6@101.
- ★ **Due 5/1/26 to GAR Powercat.**

R Edge Polly 1226 - Lot 59



58 Deer Valley Rita 11153
 DOB: 01-26-2021 Cow Reg: *20022071 Tattoo: 11153

#*Connealy Confidence Plus
 #*E&B PLUS ONE
 19196960 #*E&B Lady 1023 Precision 936

#*TEX Playbook 5437
 #*DEER VALLEY RITA 9116
 19466558 *Deer Valley Rita 5646

#*Connealy Confidence 0100
 Elbanna of Conanga 1209
 #+E&B 1680 Precision 1023
 E&B Lady 878 New Design 441

#*Basin Payweight 1682
 #*Rita 1C43 of 9M26 Complete
 #*SandPoint Butkus X797
 Deer Valley Rita 3686



CED	BW	WW	YW	RADG	DMI	YH	SC	DOC	PAP	
+12	+8	+62	+113	+33	+10	+2	+1.04	+22	+2.24	
CLAW	ANGLE	HP	CEM	Milk	MW	MH	CW	MRB	RE	FAT
+5.4	+4.1	+9.6	+11	+24	+68	+3	+31	+6.7	+6.3	-.010
HDSOK		SM	SW	SF	SG	SB	SC			
		+49	+56	+86	+55	+142	+233			

- ★ Rita 11153 is a low-birth daughter of the fifth-generation Deer Valley Rita, Rita 9116, sired by the proven balanced-trait sire Plus One.
- ★ Rita 11153 records a BR 1@97, a WR 1@121 and a YR 1@117. Rita 9116, the dam of Lot 58, blends the proven foundation Deer Valley herd sires Playbook, Butkus X797, and Weigh Up with a direct daughter of the legendary Deer Valley matriarch EXT 614. The dam of Lot 58 posts a WR 3@101 and a YR 2@104 while showing an ultrasound REA ratio 32@102.
- ★ Has a 1/11/26 bull calf, Lot 58A, by GAR Powercat, tattoo 6178.
- ★ Bred 4/1/26 to Yon Southern Rock.

59 R Edge Polly 1226
 DOB: 02-23-2021 Cow Reg: *20051118 Tattoo: 1226

#*G A R Sure Fire
 #*G A R DUAL THREAT
 19123898 #*G A R Daybreak A3010

#*G A R Scale House
 #*R EDGE POLLY 9031
 19727999 *Long Polly 3339

#*Connealy In Sure 8524
 #Chair Rock 5050 G A R 8086
 #MCC Daybreak
 #G A R 5050 New Design A91

#MCC Daybreak
 #*G A R 5050 New Design 1039
 #*G A R Prophet
 CCC Polly 1042



CED	BW	WW	YW	RADG	DMI	YH	SC	DOC	PAP	
+10	+0	+65	+128	+34	+1.08	+8	+1.17	+27	+0.3	
CLAW	ANGLE	HP	CEM	Milk	MW	MH	CW	MRB	RE	FAT
+4.8	+5.4	+10.1	+9	+39	+67	+9	+61	+9.6	+1.13	+0.040
ANGUS		SM	SW	SF	SG	SB	SC			
		+76	+75	+120	+72	+193	+326			

- ★ Polly 1226 is a low-birth and PAP female sired by the featured Ogeechee Angus sire Dual Threat with a proven second-generation Polly in the Ragged Edge program, Polly 9031.
- ★ Polly 1226 shows an ultrasound IMF ratio 1@125.
- ★ Has a 1/8/26 bull calf, Lot 59A, by GAR Fireproof, tattoo 6156.
- ★ Bred 4/1/26 to Deer Valley Margin Call 4342.

60 Deer Valley Rita 1190
 DOB: 01-12-2021 Cow Reg: +*20048582 Tattoo: 1190

#*SydGen Exceed 3223
 #SYDGEN ENHANCE
 18170041 SydGen Rita 2618

#*Basin Payweight 1682
 #*DEER VALLEY RITA 7210
 18827873 #*BoBo Rita 1559

+*SydGen Googol
 +*SydGen Forever Lady 1255
 #*SydGen Liberty GA 8627
 #Fox Run Rita 9308

#*Basin Payweight 0065
 21AR O Lass 7017
 #*Summitcrest Complete 1P55
 +DRMCTR 111 Rita 6108

CED	BW	WW	YW	RADG	DMI	YH	SC	DOC	PAP	
+7	+2.1	+65	+118	+29	+7.3	+8	+8.9	+30	+5.75	
CLAW	ANGLE	HP	CEM	Milk	MW	MH	CW	MRB	RE	FAT
+4.3	+5.5	+11.9	+7	+33	+47	+6	+39	+5.4	+8.1	-.010
HDSOK		SM	SW	SF	SG	SB	SC			
		+74	+70	+83	+51	+134	+248			

- ★ Rita 1190 is a third-generation Deer Valley Rita and blends the longtime ORigen roster leader Enhance with a direct daughter of the \$350,000 valued herd sire producing Rita 1559 and the cornerstone female sire Payweight 1682.
- ★ Rita 1190 records a BR 1@97, a WR 1@105 and a YR 1@105. The dam of Lot 60 balances a BR 1@94 with a YR 1@100 while showing ultrasound ratios IMF 2@115 and REA 2@100.
- ★ Has a 3/19/26 heifer calf, Lot 60A, by Baldrige Incognito J852, tattoo 6349.

Deer Valley Rita 11179 - Lot 61



61 Deer Valley Rita 11179
 DOB: 01-28-2021 Cow Reg: +*20111422 Tattoo: 11179

#+*PVF Insight 0129
+*PVF BLACKLIST 7077
 18944889 +*PVF Blackbird 3070

+*EXAR Classen 1422B
+*DEER VALLEY RITA 51129
 18214242 %*CSP Rita V229

#*S A V Brilliance 8077
 +*PVF Missie 790
 *Dameron First Class
 +ALL PVF Blackbird 645

*Dameron First Class
 +*EXAR Princess 2006
 #*Connealy All Around
 +Davis Rita 4001

CED	BW	WW	YW	RADG	DMI	YH	SC	DOC	PAP	
+2	+3.8	+76	+119	+23	+74	+4	-.04	+19	+56	
CLAW	ANGLE	HP	CEM	Milk	MW	MH	CW	MRB	RE	FAT
+4.9	+4.9	+9.0	+4	+15	+81	+4	+62	+4.9	+1.17	-.017

SM	SW	SF	SG	SB	SC
+39	+55	+119	+54	+174	+265

- ★ Rita 11179 blends the proven ROV sires Blacklist and Classen 1422B with the former Deer Valley foundation Rita, Rita V229.
- ★ Rita 11179 carries an ultrasound REA ratio 2@102. The dam of Lot 61 shows a WR 1@100.
- ★ Has a 3/24/26 bull calf, Lot 61A, by Colburn Primo 5153, tattoo 6359.

63 Deer Valley Primrose 0754
 DOB: 09-25-2020 Cow Reg: *20063056 Tattoo: 0754

#*S A V Brilliance 8077
+*PVF INSIGHT 0129
 16805884 +*PVF Missie 790

+*PVF Surveillance 4129
+*DEER VALLEY PRIMROSE 7727
 19067308 +*RRR Primrose 1119

#+S A V Bismarck 5682
 S A V Blackcap May 5270
 #+*P V F New Horizon 001
 P V F Miss Raptor 024

#+B C Lookout 7024
 *PVF Ellen 9100
 #+S A V Bismarck 5682
 +44 Primrose 6268

CED	BW	WW	YW	RADG	DMI	YH	SC	DOC	PAP	
+3	+3.6	+63	+104	+27	-.16	+8	+52	+23	+3.75	
CLAW	ANGLE	HP	CEM	Milk	MW	MH	CW	MRB	RE	FAT
+4.5	+5.0	+6.9	+7	+19	+48	+6	+44	-.35	+8.7	-.043

SM	SW	SF	SG	SB	SC
+46	+47	+105	+11	+116	+196

- ★ Primrose 0754 is a proven daughter of the RE and ROV sire in the Express Ranches herd sire roster Insight 0129, and stems from a dam who combines the phenotype sires Surveillance 4129 and Bismarck while stemming from the famous Primrose family.
- ★ Has a 2/26/26 heifer calf, Lot 63A, by Hill Valley Reckoning 931, tattoo 6276.

62 Deer Valley Rita 0292
 DOB: 02-03-2020 Cow Reg: +*19790694 Tattoo: 0292

Plainview Lutton E102
+*S&R ROUNDTABLE J328
 17573679 +PVF Proven Queen 786

+*EXAR Classen 1422B
+*DEER VALLEY RITA 51129
 18214242 %*CSP Rita V229

#Exar Lutton 1831
 Plainview Pride C123
 #BR Midland
 +PVF Proven Queen 419

*Dameron First Class
 +*EXAR Princess 2006
 #*Connealy All Around
 +Davis Rita 4001

CED	BW	WW	YW	RADG	DMI	YH	SC	DOC	PAP	
-1	+5.0	+65	+103	+23	+29	+4	+06	+13	+59	
CLAW	ANGLE	HP	CEM	Milk	MW	MH	CW	MRB	RE	FAT
+5.5	+4.7	+9.3	+1	+19	+73	+4	+45	+4.6	+8.4	+.035

SM	SW	SF	SG	SB	SC
+26	+42	+109	+44	+153	+224

- ★ Rita 0292 is a maternal sister to Lot 61 sired by the proven ROV sire in the Express Ranches herd sire roster, Roundtable J238.
- ★ Rita 0292 posts a BR 1@99, a WR 1@100 and a YR 1@104 while carrying an ultrasound REA ratio 1@118. The dam of Lot 61 shows a WR 1@100.
- ★ Has a 1/29/26 heifer calf, Lot 62A, by PVF Blacklist 7077, tattoo 61173.
- ★ Bred 4/1/26 to Hill Valley Reckoning 931.

EPF Blackcap I324 - Lot 64



- ★ Blackcap I324 is a Marb. and RE female from the heart of the Deer Valley fall calving program and blends the foundation Edisto Pines Farm donor Blackcap 71134 and the foundation female sire Home Town.
- ★ Blackcap I324 posts a WR 1@100 while carrying an ultrasound IMF ratio 2@99. The dam of Lot 64 records a WR 2@103 and a YR 2@105 while showing an ultrasound REA ratio 8@99.
- ★ **Due 11/8/26 to Baldridge Incognito J852.**

64 **EPF Blackcap I324**
 DOB: 01-18-2021 Cow Reg: +*19990323 Tattoo: I324

#+*G A R Ashland *G A R Early Bird
 #*G A R HOME TOWN +*Chair Rock Ambush 1018
 19266718 +*Chair Rock Sure Fire 6095
 #*G A R Sure Fire
 +*Chair Rock Progress 3005

#+*Quaker Hill Rampage 0A36 #MCC Daybreak
 #*DEER VALLEY BLACKCAP 71134 +*QHF Blackcap 6E2 of4V16 4355
 18823950 +*Deer Valley Blackcap 51124
 #*Plattemere Weigh Up K360
 +*Deer Valley Blackcap 9822



CED	BW	WW	YW	RADG	DMI	YH	SC	DOC	PAP	
+9	+1.2	+68	+121	+30	+70	+3	+1.37	+17	+1.46	
CLAW	ANGLE	HP	CEM	Milk	MW	MH	CW	MRB	RE	FAT
+73	+56	+13.0	+11	+18	+82	+3	+62	+1.38	+1.22	-0.26
SM	SW	SF	SG	SB	SC					
+48	+54	+126	+99	+225	+340					



64A **Deer Valley Heat Seeker 5845**
 DOB: 10-21-2025 Bull Reg: *21513765 Tattoo: 5845

#+*Mill Brae Identified 4031 #*Koupals B&B Identity
 +*BALDRIDGE HEAT SEEKER H925 *Mill Brae Pro Blackcap 1092
 19806485 +*Baldridge Isabel E048 #*Connealy Confidence Plus
 #*Baldridge Isabel Y69

#+*G A R Home Town #*G A R Ashland
 #*EPF BLACKCAP I324 +*Chair Rock Sure Fire 6095
 19990323 *Deer Valley Blackcap 71134 #*Quaker Hill Rampage 0A36
 +*Deer Valley Blackcap 51124



CED	BW	WW	YW	RADG	DMI	YH	SC	DOC	PAP	
+7	+2.2	+86	+153	+36	+1.00	+7	+1.19	+18	+2.01	
CLAW	ANGLE	HP	CEM	Milk	MW	MH	CW	MRB	RE	FAT
+55	+50	+12.5	+4	+22	+90	+7	+89	+1.44	+1.55	-0.17
SM	SW	SF	SG	SB	SC					
+59	+78	+155	+105	+261	+398					



Deer Valley Rita 1816 - Lot 65



- ★ Rita 1816 is a PAP and \$M daughter of the fourth-generation Deer Valley Rita, Rita 86137, sired by the proven multi-trait female sire, Home Town.
- ★ Rita 1816 records a WR 2@108 while showing ultrasound ratios IMF 2@113 and REA 2@102. The dam of Lot 65 posts a WR 1@107.
- ★ **Bred 2/20/26 to HHM Kevlar 265.**

65 **Deer Valley Rita 1816**
 DOB: 10-03-2021 Cow Reg: +*20343377 Tattoo: 1816

#+*G A R Ashland *G A R Early Bird
 #*G A R HOME TOWN +*Chair Rock Ambush 1018
 19266718 +*Chair Rock Sure Fire 6095
 #*G A R Sure Fire
 +*Chair Rock Progress 3005

#+*TEX Playbook 5437 #*Basin Payweight 1682
 #*DEER VALLEY RITA 86137 +*Rita 1C43 of 9M26 Complete
 19394416 +*Deer Valley Rita 36142
 #*Plattemere Weigh Up K360
 +*Deer Valley Rita 9457



CED	BW	WW	YW	RADG	DMI	YH	SC	DOC	PAP	
+9	+1.8	+65	+123	+30	+1.17	+4	+87	+19	-3.74	
CLAW	ANGLE	HP	CEM	Milk	MW	MH	CW	MRB	RE	FAT
+61	+44	+12.4	+12	+27	+47	+2	+59	+96	+1.06	-0.06
SM	SW	SF	SG	SB	SC					
+80	+64	+118	+75	+193	+330					



65A **Deer Valley Rita 5851**
 DOB: 10-27-2025 Cow Reg: *21511711 Tattoo: 5851

#+*Connealy Confidence Plus #*Connealy Confidence 0100
 #*BA7 OAKS BOLD RULER Elbanna of Conanga 1209
 19984739 *Erica of Ellston T220 #*Baldridge 38 Special
 #*Erica of Ellston R96

#+*G A R Home Town #*G A R Ashland
 #*DEER VALLEY RITA 1816 +*Chair Rock Sure Fire 6095
 20343377 +*Deer Valley Rita 86137 #*TEX Playbook 5437
 +*Deer Valley Rita 36142

CED	BW	WW	YW	RADG	DMI	YH	SC	DOC	PAP	
+13	+0	+59	+124	+33	+1.14	+2	+84	+26	+0.4	
CLAW	ANGLE	HP	CEM	Milk	MW	MH	CW	MRB	RE	FAT
+53	+39	+11.1	+11	+40	+18	-2	+63	+32	+1.20	+0.10
SM	SW	SF	SG	SB	SC					
+89	+75	+125	+44	+169	+308					



Vintage Blackcap 1627 - Lot 66



- ★ Blackcap 1627 is a low-birth, PAP, Marb., RE, \$B and \$C female produced by the feature of the Spruce Mountain Ranch and Vintage Angus donor Blackcap 5417, and sired by the proven female sire Home Town.
- ★ Blackcap 1627 posts ultrasound ratios IMF 2@132 and REA 2@102. Blackcap 5417, the dam of Lot 66 is a direct daughter of the legendary Vintage Angus and Schnoor Sisters donor Blackcap 9319, and sired by the balanced-trait Deer Valley sire Generation. The dam of Lot 66 records a WR 2@105 and a YR 2@101 while carrying an ultrasound IMF ratio 11@100.
- ★ **Due 11/8/26 to Baldridge Incognito J852.**

66 **Vintage Blackcap 1627**
 DOB: 08-25-2021 Cow Reg: +*20129820 Tattoo: 1627

#+*G A R Ashland *G A R Early Bird
 #*G A R HOME TOWN +*Chair Rock Ambush 1018
 19266718 +*Chair Rock Sure Fire 6095
 #*G A R Sure Fire
 #*Chair Rock Progress 3005

#*V A R Generation 2100 *Connealy Consensus 7229
 +*VINTAGE BLACKCAP 5417 +*Sandpoint Blackbird 8809
 18211453 +*V A R Blackcap 9319 *Connealy All Around
 +*EXAR New Design 4212



CED	BW	WW	YW	RADG	DMI	YH	SC	DOC	PAP	
+8	+7	+79	+132	+27	+99	+4	+33	+25	-1.42	
CLAW	ANGLE	HP	CEM	Milk	MW	MH	CW	MRB	RE	FAT
+70	+49	+10.4	+14	+25	+57	+0	+71	+1.31	+1.27	-.004
HDSOK		SM	SW	SF	SG	SB	SC			
		+76	+84	+126	+94	+221	+363			

66A **Deer Valley Bold Ruler 5906**
 DOB: 11-03-2025 Bull Reg: 21511717 Tattoo: 5906

#*Connealy Confidence Plus #*Connealy Confidence 0100
 +*BA7 OAKS BOLD RULER Elbanna of Conanga 1209
 19984739 *Erica of Ellston T220 #+*Baldridge 38 Special
 #*Erica of Ellston R96

#*G A R Home Town #+*G A R Ashland
 +*VINTAGE BLACKCAP 1627 +*Chair Rock Sure Fire 6095
 20129820 +*Vintage Blackcap 5417 #*V A R Generation 2100
 +*V A R Blackcap 9319



CED	BW	WW	YW	RADG	DMI	YH	SC	DOC	PAP	
I+9	I+8	I+80	I+145	I+31	I+1.56	I+4	I+51	I+28	I+63	
CLAW	ANGLE	HP	CEM	Milk	MW	MH	CW	MRB	RE	FAT
I+.59	I+.46	I+11.9	I+12	I+31	I+55	I+1	I+75	I+1.07	I+1.19	I+.005
HDSOK		SM	SW	SF	SG	SB	SC			
		+89	+90	+131	+81	+213	+365			

Deer Valley Diplomat 3322

Sire of Lot 67A.



- ★ Rita 1340 is a balanced-trait daughter of the fifth-generation Deer Valley Rita, Rita 9366, sired by the multi-trait female sire Home Town.
- ★ Rita 9366, the dam of Lot 67, blends the foundation Deer Valley female sires Blueprint and Weigh Up, and is a foundation Rita in the Hill Top Angus program. The dam of Lot 67 records a BR 3@98, a WR 3@105 and a YR 3@105.
- ★ **Has a 12/9/25 bull calf, Lot 67A, by Deer Valley Diplomat 3322, tattoo 5004.**
- ★ **Bred 2/20/26 to PEAK Stapleton.**

67 **Deer Valley Rita 1340**
 DOB: 03-15-2021 Cow Reg: *20059870 Tattoo: 1340

#+*G A R Ashland *G A R Early Bird
 #*G A R HOME TOWN +*Chair Rock Ambush 1018
 19266718 +*Chair Rock Sure Fire 6095
 #*G A R Sure Fire
 #*Chair Rock Progress 3005

#*Woodhill Blueprint *Connealy Confidence Plus
 +*DEER VALLEY RITA 9366 *Woodhill Evergreen Z291-B233
 19466661 +*Deer Valley Rita 5383 #*Plattmere Weigh Up K360
 +*Deer Valley Rita 3167



CED	BW	WW	YW	RADG	DMI	YH	SC	DOC	PAP	
+12	+3	+77	+141	+30	+1.15	+3	+1.15	+18	+27	
CLAW	ANGLE	HP	CEM	Milk	MW	MH	CW	MRB	RE	FAT
+44	+49	+11.8	+6	+33	+89	+4	+64	+1.10	+90	+005
HDSOK		SM	SW	SF	SG	SB	SC			
		+55	+84	+118	+79	+197	+311			

67A **Deer Valley Diplomat 5004**
 DOB: 12-06-2025 Bull Reg: *21511725 Tattoo: 5004

*Virginia Tech Statesman #*Tehama Patriarch F028
 +*DEER VALLEY DIPLOMAT 3322 +*Vpi 310A Rita 9G6 Et
 20663492 *Deer Valley Lucy 9165 #+*TEX Playbook 5437
 #*Deer Valley Lucy 61150

#*G A R Home Town #+*G A R Ashland
 +*DEER VALLEY RITA 1340 +*Chair Rock Sure Fire 6095
 20059870 +*Deer Valley Rita 9366 #*Woodhill Blueprint
 +*Deer Valley Rita 5383



CED	BW	WW	YW	RADG	DMI	YH	SC	DOC	PAP	
+17	-2.0	+71	+121	+26	+82	-.1	+78	+1	-.43	
CLAW	ANGLE	HP	CEM	Milk	MW	MH	CW	MRB	RE	FAT
+60	+55	+8.6	+14	+35	+54	-.1	+52	+98	+94	+044
HDSOK		SM	SW	SF	SG	SB	SC			
		+53	+90	+95	+70	+166	+268			

68 B A R Rita 1600-7488

DOB: 07-10-2021 Cow Reg: +*20254395 Tattoo: 1600

#+*G A R Ashland
 #*G A R HOME TOWN
 19266718 +*Chair Rock Sure Fire 6095

*G A R Early Bird
 +*Chair Rock Ambush 1018
 #+*G A R Sure Fire
 +*Chair Rock Progress 3005



#+G A R New Design 5050
 #*G A R 5050 NEW DESIGN 1782
 17353807 +*G A R Objective 0J07

#B/R New Design 036
 G A R Precision 706
 #*S S Objective T510 OT26
 +DRMCTR 111 Rita 6108

CED	BW	WW	YW	RADG	DMI	YH	SC	DOC	PAP	
+4	+2.4	+60	+116	+32	+37	+4	+1.02	+32	+11	
CLAW	ANGLE	HP	CEM	Milk	MW	MH	CW	MRB	RE	FAT
+4.40	+4.1	+9.4	+7	+29	+53	+2	+45	+1.43	+91	-0.58
ANGUS	SM	SW	SF	SG	SB	SC				
	+64	+56	+103	+100	+203	+327				

★ Rita 1600-7488 is a PAP and Marb. daughter of the featured dam in the Brinkley, Lazy H, and Gardiner Angus programs, New Design 1782, sired by the proven and longtime leader of the Select Sires roster, Home Town.

★ Rita 1600-7488 posts a BR 1@99, a WR 2@100 and a YR 1@106 while showing ultrasound ratios IMF 2@99 and REA 2@118. New Design 1782, the dam of Lot 68 is a direct daughter of the proven growth leader of the Blackstone Cattle Company program Objective 0J07, sired by the proven female sire New Design 5050. The dam of Lot 68 records a WR 1@110 and a YR 1@101 while carrying ultrasound ratios IMF 58@103 and REA 58@102.

★ Due 11/8/26 to PEAK Draft Pick.

69 Deer Valley Lady 1314

DOB: 03-08-2021 Cow Reg: *20021620 Tattoo: 1314

#+*Basin Payweight 1682
 #+*DEER VALLEY GROWTH FUND
 18827828 +*Deer Valley Rita 36113

#+*Basin Payweight 0065
 21AR O Lass 7017
 #*Plattemere Weigh Up K360
 +Deer Valley Rita 9457

+*Deer Valley Apostle 5373
 #*G A R Prophet
 #*DEER VALLEY LADY 9399
 19466681 +*Deer Valley Lady 7338

+*Sitz Henrietta Pride 643T
 +EXAR Upward 0924B
 Deer Valley Lady 0758

CED	BW	WW	YW	RADG	DMI	YH	SC	DOC	PAP	
+13	+5	+74	+133	+28	+1.50	+6	+40	+20	+6.61	
CLAW	ANGLE	HP	CEM	Milk	MW	MH	CW	MRB	RE	FAT
+4.45	+4.4	+11.5	+9	+18	+84	+2	+60	+38	+43	+0.34
HDSOK	SM	SW	SF	SG	SB	SC				
	+55	+62	+108	+35	+144	+242				

★ Lady 1314 is a low-birth daughter of the fifth-generation Forever Lady in the Deer Valley program, Lady 9399, sired by the proven Deer Valley herd sire roster's Growth Fund.

★ Lady 9399, the dam of Lot 69, blends the proven DVF sires Apostle 5373 and Upward 0924B. The dam of Lot 69 posts a BR 1@95 and a WR 1@101.

★ Due 11/8/26 to PEAK Draft Pick.

68A Deer Valley Diplomat 5880

DOB: 10-30-2025 Bull Reg: 21511716 Tattoo: 5880

*Virginia Tech Statesman
 #*Tehama Patriarch F028
 #*DEER VALLEY DIPLOMAT 3322
 20663492 +*Vpi 310A Rita 9G6 Et
 +*Deer Valley Lucy 9165 +*TEX Playbook 5437
 +*Deer Valley Lucy 61150



#*G A R Home Town
 #*G A R Ashland
 #*B A R RITA 1600-7488
 #*Chair Rock Sure Fire 6095
 20254395 +*G A R 5050 New Design 1782
 #*G A R New Design 5050
 +*G A R Objective 0J07

CED	BW	WW	YW	RADG	DMI	YH	SC	DOC	PAP	
I+10	I+0	I+70	I+130	I+31	I+1.11	I+6	I+.84	I+22	I-.82	
CLAW	ANGLE	HP	CEM	Milk	MW	MH	CW	MRB	RE	FAT
I+.49	I+.44	I+10.8	I+12	I+31	I+62	I+.5	I+62	I+1.34	I+.89	I+.010
SM	SW	SF	SG	SB	SC					
	+67	+76	+114	+90	+204	+332				

★ Rita 1600-7488 is a PAP and Marb. daughter of the featured dam in the Brinkley, Lazy H, and Gardiner Angus programs, New Design 1782, sired by the proven and longtime leader of the Select Sires roster, Home Town.

★ Rita 1600-7488 posts a BR 1@99, a WR 2@100 and a YR 1@106 while showing ultrasound ratios IMF 2@99 and REA 2@118. New Design 1782, the dam of Lot 68 is a direct daughter of the proven growth leader of the Blackstone Cattle Company program Objective 0J07, sired by the proven female sire New Design 5050. The dam of Lot 68 records a WR 1@110 and a YR 1@101 while carrying ultrasound ratios IMF 58@103 and REA 58@102.

★ Due 11/8/26 to PEAK Draft Pick.

69A Deer Valley Wizard 5905

DOB: 11-03-2025 Bull Reg: 21513666 Tattoo: 5905

+*Beal Breakthrough
 #*ST WIZARD 1585
 21000000 +*ST Clarity 1072

+*G A R Prophet K263
 #*H P C A Sure Fire S6
 *Connealy Clarity
 +*G A R Ashland 988



#+*Deer Valley Growth Fund
 #+*Basin Payweight 1682
 #*DEER VALLEY LADY 1314
 20021620 +*Deer Valley Lady 9399

+*Sitz Henrietta Pride 643T
 +EXAR Upward 0924B
 Deer Valley Lady 0758

CED	BW	WW	YW	RADG	DMI	YH	SC	DOC	PAP	
I+12	I+.9	I+83	I+147	I+.29	I+1.66	I+.7	I+.37	I+22	I+4.56	
CLAW	ANGLE	HP	CEM	Milk	MW	MH	CW	MRB	RE	FAT
I+.41	I+.41	I+12.8	I+12	I+24	I+81	I+.5	I+71	I+1.10	I+1.03	I+.021
SM	SW	SF	SG	SB	SC					
	+83	+82	+118	+79	+197	+339				

★ Lady 1314 is a low-birth daughter of the fifth-generation Forever Lady in the Deer Valley program, Lady 9399, sired by the proven Deer Valley herd sire roster's Growth Fund.

★ Lady 9399, the dam of Lot 69, blends the proven DVF sires Apostle 5373 and Upward 0924B. The dam of Lot 69 posts a BR 1@95 and a WR 1@101.

★ Due 11/8/26 to PEAK Draft Pick.

Deer Valley Lady 1314 - Lot 69



Deer Valley Henrietta 1361 - Lot 70



70 Deer Valley Henrietta 1361
DOB: 03-16-2021 Cow Reg: +*20066789 Tattoo: 1361

#+*Basin Payweight 1682
#*DEER VALLEY GROWTH FUND
18827828 +*Deer Valley Rita 36113

#*Quaker Hill Rampage 0A36
+*DEER VALLEY HENRIETTA 7158
18827970 +*Sitz Henrietta Pride 643T

#+*Basin Payweight 0065
21AR O Lass 7017
#*Plattemere Weigh Up K360
+Deer Valley Rita 9457

#MCC Daybreak
+*QHF Blackcap 6E2 of 4V16 4355
#*Connealy Onward
*Sitz Henrietta Pride 81M

CED	BW	WW	YW	RADG	DMI	YH	SC	DOC	PAP	
+9	+7	+75	+134	+28	+1.46	+3	+46	+21	+85	
CLAW	ANGLE	HP	CEM	Milk	MW	MH	CW	MRB	RE	FAT
+44	+47	+10.3	+11	+23	+71	+2	+57	+31	+79	+067
HDSOK		SM	SW	SF	SG	SB	SC			
HDSOK		+69	+73	+103	+34	+137	+247			

★ Henrietta 1361 is a calving-ease daughter of the second-generation Deer Valley donor Henrietta 7158 and sired by the proven and longtime leader of the Deer Valley and Select Sires rosters, Growth Fund.

★ Henrietta 7158, the dam of Lot 70, is a direct daughter of the herd sire producing matriarch of the Deer Valley, Express Ranches, and Pollard Farms programs Henrietta Pride 643T by the proven multi-trait leader, Rampage. The dam of Lot 70 posts a WR 1@100 while carrying ultrasound ratios IMF 1@100 and REA 1@100.

★ Due 11/8/26 to PEAK Draft Pick.

71 Deer Valley Lady 16124
DOB: 08-30-2021 Cow Reg: +*20243594 Tattoo: 16124

#+*Basin Payweight 1682
#*DEER VALLEY GROWTH FUND
18827828 +*Deer Valley Rita 36113

#*JMB Traction 292
+*DEER VALLEY LADY 7126
18827339 +*Deer Valley Lady 2116

#+*Basin Payweight 0065
21AR O Lass 7017
#*Plattemere Weigh Up K360
+Deer Valley Rita 9457

#*Sitz Top Game 561X
*JMB Emulota 013
#*SydGen C C & 7
#+*Werner Lady 919

CED	BW	WW	YW	RADG	DMI	YH	SC	DOC	PAP	
+10	+1.2	+69	+128	+29	+1.23	+5	+72	+20	+4.23	
CLAW	ANGLE	HP	CEM	Milk	MW	MH	CW	MRB	RE	FAT
+42	+36	+11.5	+6	+33	+53	+2	+49	+43	+60	+010
HDSOK		SM	SW	SF	SG	SB	SC			
HDSOK		+64	+77	+92	+42	+135	+239			

★ Lady 16124 is a balanced-trait daughter of the third-generation Deer Valley Lady, Lady 7126, and sired by the one-time registration leader Growth Fund.

★ Lady 16124 records a WR 1@117 and a YR 1@114 while showing ultrasound ratios IMF 1@117 and REA 1@109. The dam of Lot 71 combines the proven Deer Valley herd sire Traction with a direct daughter of the foundation DVF Lady, Lady 919 by CC&7, Lady 2116.

★ Due 11/8/26 to PEAK Draft Pick.

70A Deer Valley Powercat 5914
DOB: 11-05-2025 Bull Reg: *21513872 Tattoo: 5914

*E & B Wildcat 9402
#*G A R POWERCAT
20665222 *Daltons Rita 0206

#*Deer Valley Growth Fund
+*DEER VALLEY HENRIETTA 1361
20066789 +*Deer Valley Henrietta 7158

#*GAR Discovery 6737H
E&B Lady Plus 643
#*GB Fireball 672
+*Daltons Rita 8225

#*Basin Payweight 1682
+*Deer Valley Rita 36113
#*Quaker Hill Rampage 0A36
+*Sitz Henrietta Pride 643T

CED	BW	WW	YW	RADG	DMI	YH	SC	DOC	PAP	
+13	-2	+70	+125	+31	+86	+4	+1.14	+23	-14	
CLAW	ANGLE	HP	CEM	Milk	MW	MH	CW	MRB	RE	FAT
+53	+42	+12.3	+11	+23	+105	+4	+55	+1.23	+1.12	+022
HDSOK		SM	SW	SF	SG	SB	SC			
HDSOK		+55	+62	+106	+86	+193	+305			

★ Powercat 5914 is a proven sire of the second-generation Deer Valley donor Henrietta 7158 and sired by the proven and longtime leader of the Deer Valley and Select Sires rosters, Growth Fund.

71A Deer Valley Powercat 5850
DOB: 10-25-2025 Bull Reg: 21554415 Tattoo: 5850

*E & B Wildcat 9402
#*G A R POWERCAT
20665222 *Daltons Rita 0206

#*Deer Valley Growth Fund
+*DEER VALLEY LADY 16124
20243594 +*Deer Valley Lady 7126

#*GAR Discovery 6737H
E&B Lady Plus 643
#*GB Fireball 672
+*Daltons Rita 8225

#*Basin Payweight 1682
+*Deer Valley Rita 36113
#*JMB Traction 292
+*Deer Valley Lady 2116

CED	BW	WW	YW	RADG	DMI	YH	SC	DOC	PAP	
N/A	N/A	N/A	N/A	N/A	N/A	N/A	N/A	N/A	N/A	
CLAW	ANGLE	HP	CEM	Milk	MW	MH	CW	MRB	RE	FAT
N/A	N/A	N/A	N/A	N/A	N/A	N/A	N/A	N/A	N/A	N/A
HDSOK		SM	SW	SF	SG	SB	SC			
HDSOK		N/A	N/A	N/A	N/A	N/A	N/A			

★ Powercat 5850 is a proven sire of the second-generation Deer Valley donor Henrietta 7158 and sired by the proven and longtime leader of the Deer Valley and Select Sires rosters, Growth Fund.

EPF Rita J793 - Lot 72



- ★ Rita J793 is a growth daughter of the \$50,000 valued former Deer Valley and Edisto Pines Farm donor Rita 9Q24, and sired by the proven Deer Valley and Select Sires roster member Wall Street.
- ★ Rita J793 records a WR 2@106 and a YR 2@100 while carrying an ultrasound IMF ratio 2@120.
- ★ Bred 2/19/26 to GAR Wallace.

72 EPF Rita J793
 DOB: 10-14-2021 Cow Reg: +*20238337 Tattoo: J793

#**Basin Payweight 1682
 +*DEER VALLEY WALL STREET
 18827829 +*Deer Valley Rita 36113

#**Basin Payweight 0065
 21AR O Lass 7017
 #*Plattmehere Weigh Up K360
 +Deer Valley Rita 9457

#Gardens Highmark
 +*RITA 9Q24 OF RITA 5F56 GHM
 16440318 +*Rita 5F56 of 1198 FD

#Summitcrest Scotch Cap 0B45
 Green Garden Pride 6128 S1
 #C A Future Direction 5321
 +*Rita 1198 of 2536 Rito 616



CED	BW	WW	YW	RADG	DMI	YH	SC	DOC	PAP	
+0	+4.5	+90	+157	+30	+2.24	+1.4	+52	+17	+38	
CLAW	ANGLE	HP	CEM	Milk	MW	MH	CW	MRB	RE	FAT
+70	+57	+13.4	+8	+27	+122	+1.4	+88	+99	+62	+031
HDSOK		SM	SW	SF	SG	SB	SC			
		+44	+76	+131	+68	+199	+302			

72A Deer Valley Heat Seeker 5909
 DOB: 11-04-2025 Bull Reg: 21513750 Tattoo: 5909

#*Mill Brae Identified 4031
 +*BALDRIDGE HEAT SEEKER H925
 19806485 +*Baldrige Isabel E048

#*Koupals B&B Identity
 *Mill Brae Pro Blackcap 1092
 #*Connealy Confidence Plus
 *Baldrige Isabel Y69

+*Deer Valley Wall Street
 +*EPF RITA J793
 20238337 +*Rita 9Q24 of Rita 5F56 GHM

#*Basin Payweight 1682
 +*Deer Valley Rita 36113
 #Gardens Highmark
 +*Rita 5F56 of 1198 FD



CED	BW	WW	YW	RADG	DMI	YH	SC	DOC	PAP	
I+4	I+2.2	I+77	I+135	I+31	I+1.21	I+.8	I+.84	I+14	I+1.08	
CLAW	ANGLE	HP	CEM	Milk	MW	MH	CW	MRB	RE	FAT
I+.54	I+.49	I+13.2	I+6	I+27	I+69	I+.7	I+.79	I+1.26	I+.85	I+.024
HDSOK		SM	SW	SF	SG	SB	SC			
		+65	+76	+139	+84	+224	+356			

Deer Valley Henrietta 1352 - Lot 73



- ★ Henrietta 1352 is a calving-ease daughter of the second-generation Deer Valley Henrietta, Henrietta 7134, and sired by the proven Deer Valley female sire Brigade 81247.
- ★ Henrietta 1352 records a WR 2@105 and a YR 1@105 while showing an ultrasound REA ratio 2@112. Henrietta 7134, the dam of Lot 73 is a direct daughter of the \$100,000 valued former Deer Valley and Spruce Mountain Ranch donor Henrietta 639T and sired by the foundation multi-trait sire, Rampage. The dam of Lot 73 carries an ultrasound REA ratio 1@101.
- ★ Bred 2/19/26 to GAR Wallace.

73 Deer Valley Henrietta 1352
 DOB: 03-15-2021 Cow Reg: *20049174 Tattoo: 1352

#*Baldrige Colonel C251
 +*DEER VALLEY BRIGADE 81247
 19469706 +*Deer Valley Rita 36142

#**Quaker Hill Rampage 0A36
 +*DEER VALLEY HENRIETTA 7134
 18827975 +*Sitz Henrietta Pride 639T

#+baldrige Xpand x743
 *Baldrige Isabel Y69
 #*Plattmehere Weigh Up K360
 +Deer Valley Rita 9457

#MCC Daybreak
 +*QHF Blackcap 6E2 of 4V16 4355
 #*Connealy Onward
 *Sitz Henrietta Pride 81M

CED	BW	WW	YW	RADG	DMI	YH	SC	DOC	PAP	
+7	-.2	+68	+124	+26	+1.62	+3	+1.20	+3	+2.96	
CLAW	ANGLE	HP	CEM	Milk	MW	MH	CW	MRB	RE	FAT
+56	+49	+8.2	+13	+18	+44	+1	+41	+16	+66	+039
HDSOK		SM	SW	SF	SG	SB	SC			
		+47	+61	+80	+27	+107	+186			

73A Deer Valley Powercat 5944
 DOB: 11-24-2025 Bull Reg: 21513875 Tattoo: 5944

*E & B Wildcat 9402
 *G A R POWERCAT
 20665222 *Daltons Rita 0206

#*GAR Discovery 6737H
 E&B Lady Plus 643
 #*GB Fireball 672
 +*Daltons Rita 8225

+*Deer Valley Brigade 81247
 +*DEER VALLEY HENRIETTA 1352
 20049174 +*Deer Valley Henrietta 7134

#*Baldrige Colonel C251
 +*Deer Valley Rita 36142
 #*Quaker Hill Rampage 0A36
 +*Sitz Henrietta Pride 639T



CED	BW	WW	YW	RADG	DMI	YH	SC	DOC	PAP	
I+10	I-.7	I+65	I+126	I+.33	I+1.18	I+.4	I+1.05	I+13	I+2.06	
CLAW	ANGLE	HP	CEM	Milk	MW	MH	CW	MRB	RE	FAT
I+.52	I+.48	I+11.1	I+12	I+22	I+66	I+.3	I+.46	I+.80	I+.86	I-.004
HDSOK		SM	SW	SF	SG	SB	SC			
		+52	+59	+95	+64	+160	+260			

Deer Valley Foreverlady 3220 - Lot 74



- ★ Foreverlady 3220 is a balanced-trait daughter of the proven \$M Knoll Crest Farm and Connealy Angus sire Surpass, and stems from a fifth-generation Deer Valley Forever Lady, Foreverlady 81129.
- ★ The dam of Lot 74 records a WR 3@103 and a YR 3@101 while carrying ultrasound ratios IMF 1@100 and REA 1@102.
- ★ Bred 3/19/26 to Deer Valley Margin Call 4342.

74 Deer Valley Foreverlady 3220
 DOB: 02-08-2023 Cow Reg: *20667837 Tattoo: 3220

#+*TEX Playbook 5437 #+*Basin Payweight 1682
 +*BJ SURPASS #+Rita 1C43 of 9M26 Complete
 19774516 +*BJ Prophet 5275 #+*G A R Prophet
 #BJ Complete 1165
 #*S Whitlock 179 #*S Chisum 6175
 *DEERVALLEY FOREVERLADY 81129 #S Pride Anna 709
 19125658 *Deer Valley Foreverlady 3808 #+*Connealy Earnan 076E
 Deer Valley Foreverlady 1735

CED	BW	WW	YW	RADG	DMI	YH	SC	DOC	PAP	
+1	+3.5	+71	+123	+24	+1.27	+4	-.66	+10	+1.20	
CLAW	ANGLE	HP	CEM	Milk	MW	MH	CW	MRB	RE	FAT
+4.7	+3.2	+10.5	+9	+28	+47	+4	+40	+5.0	+7.6	-.003
SM	SW	SF	SG	SB	SC					
+73	+69	+74	+48	+122	+231					

74A Deer Valley Foreverlady 5634
 DOB: 08-09-2025 Cow Reg: *21369223 Tattoo: 5634

*E & B Wildcat 9402 #+*GAR Discovery 6737H
 *G A R POWERCAT E&B Lady Plus 643
 20665222 *Daltons Rita 0206 #*GB Fireball 672
 #Daltons Rita 8225
 +*BJ Surpass #+*TEX Playbook 5437
 *DEER VALLEY FOREVERLADY 3220 #+*BJ Prophet 5275
 20667837 *Deer Valley Foreverlady 81129 #*S Whitlock 179
 *Deer Valley Foreverlady 3808

CED	BW	WW	YW	RADG	DMI	YH	SC	DOC	PAP	
+9	+3	+75	+137	+32	+98	+3	-.32	+17	+3.0	
CLAW	ANGLE	HP	CEM	Milk	MW	MH	CW	MRB	RE	FAT
+5.0	+4.1	+13.4	+10	+27	+70	+6	+52	+9.7	+1.43	-.065
SM	SW	SF	SG	SB	SC					
+71	+77	+97	+84	+181	+306					

Deer Valley Rita 3920 - Lot 75



- ★ Rita 3920 is a power-growth female produced by a featured member of the Rita family Rita 96115, and sired by the proven leader of the ST Genetics roster, Commerce.
- ★ Rita 3920 posts a weaning ratio of 118 and a yearling ratio of 110 while carrying an ultrasound REA ratio of 116. Rita 96115, the dam of Lot 75 blends the foundation female sires in the Deer Valley herd sire roster, Blueprint aand Weigh Up, with a productive daughter of Ten X. The dam of Lot 75 records a BR 1@97 and a WR 1@104 while showing ultrasound ratios IMF 2@103 and REA 2@106.
- ★ Bred 3/19/26 to Deer Valley Margin Call 4342.

75 Deer Valley Rita 3920
 DOB: 11-03-2023 Cow Reg: *20899704 Tattoo: 3920

+*G A R Sunbeam #+*G A R Sunrise
 *CONNEALY COMMERCE #*G A R Ingenuity 3132
 20132642 *Avira of Conanga 814R #*Connealy Cade
 #*Woodhill Blueprint #*Avie of Conanga 624P
 +*DEER VALLEY RITA 96115 #*Connealy Confidence Plus
 19676800 +*Deer Valley Rita 5383 #*Woodhill Evergreen Z291-B233
 #*Plattemere Weigh Up K360
 +*Deer Valley Rita 3167

CED	BW	WW	YW	RADG	DMI	YH	SC	DOC	PAP	
+3	+3.7	+103	+184	+38	+2.05	+1.3	+75	+27	+1.91	
CLAW	ANGLE	HP	CEM	Milk	MW	MH	CW	MRB	RE	FAT
+6.4	+5.9	+7.1	+11	+23	+154	+1.6	+92	+4.4	+1.31	-.002
SM	SW	SF	SG	SB	SC					
+23	+84	+143	+52	+196	+277					

75A Deer Valley Rita 5953
 DOB: 11-28-2025 Cow Reg: 21544125 Tattoo: 5953

*E & B Wildcat 9402 #+*GAR Discovery 6737H
 *G A R POWERCAT E&B Lady Plus 643
 20665222 *Daltons Rita 0206 #*GB Fireball 672
 #Daltons Rita 8225
 #*Connealy Commerce #+*G A R Sunbeam
 *DEER VALLEY RITA 3920 #*Avira of Conanga 814R
 20899704 +*Deer Valley Rita 96115 #*Woodhill Blueprint
 +*Deer Valley Rita 5383

CED	BW	WW	YW	RADG	DMI	YH	SC	DOC	PAP	
I+8	I+1.3	I+82	I+156	I+39	I+1.39	I+9	I+.83	I+25	I+1.53	
CLAW	ANGLE	HP	CEM	Milk	MW	MH	CW	MRB	RE	FAT
I+.56	I+.53	I+10.5	I+11	I+25	I+121	I+1.1	I+72	I+.94	I+1.18	I-.024
SM	SW	SF	SG	SB	SC					
+39	+72	+128	+76	+204	+304					

76 Riverbend Blackcap J1550

DOB: 07-02-2021 Cow Reg: +*20181992 Tattoo: J1550

+*G A R Sure Fire 6404 #+*G A R Sure Fire
 #*GB FIREBALL 672 +*G A R Complete N281
 18690054 *GB Anticipation 432 *G A R Anticipation
 GB Ambush 269



#+*Baldrige Colonel C251 #+baldrige Xpand x743
 +*RIVERBEND BLACKCAP F734 *Baldrige Isabel Y69
 19138501 +*Quaker Hill Blackcap 0A35 *MCC Daybreak
 +*QHF Blackcap 6E2 of4V16 4355

CED	BW	WW	YW	RADG	DMI	YH	SC	DOC	PAP	
+9	-2	+71	+128	+29	+1.14	+4	+84	+22	+21	
CLAW	ANGLE	HP	CEM	Milk	MW	MH	CW	MRB	RE	FAT
+46	+50	+7.9	+14	+23	+77	+4	+57	+1.20	+1.18	-.015
HOSOK		SM	SW	SF	SG	SB	SC			
		+49	+67	+109	+88	+198	+306			

- ★ Blackcap J1150 is a proven and productive daughter of the second-generation Riverbend Ranch donor from the herd sire producing Blackcap 6E2 family, Blackcap F734 sired by the proven carcass sire, Fireball.
- ★ Blackcap J1550 records a BR 2@95, a WR 2@112 and a YR 2@108 while carrying an ultrasound REA ratio 2@116. Blackcap F734, the dam of Lot 76 is a direct daughter of the \$100,000 full sister to Rampage in the Riverbend Ranch program, Blackcap 0A35 sired by the record-selling Spruce Mountain Ranch sire, Colonel. The dam of Lot 76 posts a WR 2@103 and a YR 1@100 while showing an ultrasound REA ratio 11@105.
- ★ **Bred 2/22/26 to GAR Wallace.**

76A Deer Valley Blackcap 5936

DOB: 11-23-2025 Cow Reg: *21511722 Tattoo: 5936

*Virginia Tech Statesman #*Tehama Patriarch F028
 *DEER VALLEY DIPLOMAT 3322 +*Vpi 310A Rita 9G6 Et
 20663492 *Deer Valley Lucy 9165 #*TEX Playbook 5437
 *Deer Valley Lucy 61150



#*GB Fireball 672 +*G A R Sure Fire 6404
 +*RIVERBEND BLACKCAP J1550 *GB Anticipation 432
 20181992 +*Riverbend Blackcap F734 #+*Baldrige Colonel C251
 +*Quaker Hill Blackcap 0A35

CED	BW	WW	YW	RADG	DMI	YH	SC	DOC	PAP	
+9	-2	+79	+143	+30	+1.85	+6	+1.25	+20	+65	
CLAW	ANGLE	HP	CEM	Milk	MW	MH	CW	MRB	RE	FAT
+50	+49	+8.1	+16	+23	+92	+8	+65	+1.13	+1.04	+0.25
HOSOK		SM	SW	SF	SG	SB	SC			
		+51	+75	+106	+80	+187	+294			

77 Deer Valley Jilt 11155

DOB: 01-26-2021 Cow Reg: *20108264 Tattoo: 11155

#SydGen Enhance #*SydGen Exceed 3223
 #*S S ENFORCER E812 SydGen Rita 2618
 19274932 #S S Miss Daybreak K011 3K17 S S Daybreak K011
 S S Miss Incentive X19

#3F Epic 4631 *Varilek Product 2010 04
 +*DEER VALLEY JILT 8862 Zebo Queen 1072
 19394518 Deer Valley Jilt 3398 #*Plattmere Weigh Up K360
 +Day Jilt 9310

CED	BW	WW	YW	RADG	DMI	YH	SC	DOC	PAP	
+3	+2.7	+82	+151	+30	+2.13	+5	+22	+28	+1.71	
CLAW	ANGLE	HP	CEM	Milk	MW	MH	CW	MRB	RE	FAT
+57	+63	+12.7	+7	+26	+65	+4	+50	+76	+54	+054
HOSOK		SM	SW	SF	SG	SB	SC			
		+76	+78	+86	+54	+140	+258			

- ★ Jilt 11155 is a balanced-trait daughter of the third-generation Deer Valley Jilt, Jilt 8862, sired by the proven Spruce Mountain Ranch, Baldrige Performance Angus, and Conover Family sire, Enforcer.
- ★ Jilt 11155 records a WR 1@120 and a YR 1@118 while carrying an ultrasound IMF ratio 3@101.
- ★ **Due 11/8/26 to Yon Southern Rock.**

77A Deer Valley Powercat 5907

DOB: 11-03-2025 Bull Reg: *21513870 Tattoo: 5907

*E & B Wildcat 9402 #+*GAR Discovery 6737H
 *G A R POWERCAT E&B Lady Plus 643
 20665222 *Daltons Rita 0206 #*GB Fireball 672
 +*Daltons Rita 8225

#*S S Enforcer E812 #SydGen Enhance
 +*DEER VALLEY JILT 11155 #S S Miss Daybreak K011 3K17
 20108264 *Deer Valley Jilt 8862 #3F Epic 4631
 Deer Valley Jilt 3398

CED	BW	WW	YW	RADG	DMI	YH	SC	DOC	PAP	
+3	+2.5	+83	+156	+36	+1.69	+7	+1.52	+24	+1.61	
CLAW	ANGLE	HP	CEM	Milk	MW	MH	CW	MRB	RE	FAT
+60	+65	+16.0	+6	+30	+82	+6	+71	+58	+1.19	+002
HOSOK		SM	SW	SF	SG	SB	SC			
		+69	+82	+118	+57	+175	+296			



Deer Valley Lucy 11187 - Lot 78



- ★ Lucy 11187 is power-growth female produced by the second-generation Deer Valley Lucy, Lucy 8830, sired by the proven son of the former Whitestone Farms headliner Daybreak K011 3K17, Enforcer.
- ★ Lucy 11187 posts a WR 1@116 and a YR 1@107 while showing ultrasound ratios IMF 1@106 and REA 1@100. The dam of Lot 78 records a WR 3@106 and a YR 3@106 while carrying ultrasound ratios IMF 1@113 and REA 1@109.
- ★ **Bred 2/25/26 to Yon Southern Rock.**

78 **Deer Valley Lucy 11187**
 DOB: 01-29-2021 Cow Reg: *20061365 Tattoo: 11187

#SydGen Enhance #SydGen Exceed 3223
 #*S S ENFORCER E812 SydGen Rita 2618
 19274932 #S S Miss Daybreak K011 3K17 S S Daybreak K011
 S S Miss Incentive X19
 +*Deer Valley Balance 6169 #*Plattmere Weigh Up K360
 +*DEER VALLEY LUCY 8830 *Deer Valley Rita 3166
 19705484 +*Spruce Mtn Lucy 4509 *+*G A R Prophet
 +*44 Lucy 1295



CED	BW	WW	YW	RADG	DMI	YH	SC	DOC	PAP	
-2	+4.8	+105	+190	+37	+2.32	+1.2	+1.07	+25	+3.23	
CLAW	ANGLE	HP	CEM	Milk	MW	MH	CW	MRB	RE	FAT
+4.3	+4.6	+12.9	+4	+21	+114	+1.1	+72	+88	+64	-0.07
HDSOK		SM	SW	SF	SG	SB	SC			
		+62	+85	+107	+66	+173	+286			

78A **Deer Valley Lucy 5854**
 DOB: 10-27-2025 Cow Reg: *21514805 Tattoo: 5854

#*Mill Brae Identified 4031 #*Koupals B&B Identity
 +*BALDRIDGE INCOGNITO J852 *Mill Brae Pro Blackcap 1092
 20184105 +*Baldridge Isabel E048 #*Connealy Confidence Plus
 #*S S Enforcer E812 #SydGen Enhance
 *DEER VALLEY LUCY 11187 #S S Miss Daybreak K011 3K17
 20061365 +*Deer Valley Lucy 8830 +*Deer Valley Balance 6169
 +*Spruce Mtn Lucy 4509



CED	BW	WW	YW	RADG	DMI	YH	SC	DOC	PAP	
+3	+2.8	+88	+153	+31	+1.47	+9	+42	+22	+1.51	
CLAW	ANGLE	HP	CEM	Milk	MW	MH	CW	MRB	RE	FAT
+4.2	+4.2	+9.3	+4	+21	+74	+8	+70	+1.29	+1.16	+0.11
HDSOK		SM	SW	SF	SG	SB	SC			
		+68	+80	+116	+91	+207	+336			

A granddaughter of this legendary Deer Valley Farm headliner sells as Lot 79.

Sitz Henrietta Pride 643T



- ★ Owned with Lane View Farms.
- ★ Henrietta 1106 is a proven daughter of the female sire Enforcer and stems from a sensational second-generation Deer Valley Henrietta Pride, Henrietta 6150.
- ★ Henrietta 1106 posts a BR 1@97, a WR 2@99 and a YR 2@103 while showing ultrasound ratios IMF 2@105 and REA 2@101. The dam of Lot 79 records a WR 2@108 while carrying an ultrasound REA ratio 3@101.
- ★ **Bred 3/15/26 to Yon Southern Rock.**

79 **Deer Valley Henrietta 1106**
 DOB: 01-02-2021 Cow Reg: *20061426 Tattoo: 1106

#SydGen Enhance #*SydGen Exceed 3223
 #*S S ENFORCER E812 SydGen Rita 2618
 19274932 #S S Miss Daybreak K011 3K17 S S Daybreak K011
 S S Miss Incentive X19
 #*Connealy Consensus 7229 #*Connealy Consensus
 +*DEER VALLEY HENRIETTA 6150 Blue Lilly of Conanga 16
 18693035 +*Sitz Henrietta Pride 643T #*Connealy Onward
 *Sitz Henrietta Pride 81M

CED	BW	WW	YW	RADG	DMI	YH	SC	DOC	PAP	
+3	+1.5	+68	+129	+27	+1.79	+4	+1.35	+25	+1.00	
CLAW	ANGLE	HP	CEM	Milk	MW	MH	CW	MRB	RE	FAT
+3.9	+5.0	+11.9	+11	+29	+56	+3	+40	+45	+66	+0.02
HDSOK		SM	SW	SF	SG	SB	SC			
		+62	+69	+69	+44	+113	+209			

79A **Deer Valley Wizard 5855**
 DOB: 10-27-2025 Bull Reg: 21513662 Tattoo: 5855

+*Beal Breakthrough +*G A R Prophet K263
 +*ST WIZARD 1585 *H P C A Sure Fire S6
 21000000 +*ST Clarity 1072 #*Connealy Clarity
 +*G A R Ashland 988
 #*S S Enforcer E812 #SydGen Enhance
 +*DEER VALLEY HENRIETTA 1106 #S S Miss Daybreak K011 3K17
 20061426 +*Deer Valley Henrietta 6150 #*Connealy Consensus 7229
 +*Sitz Henrietta Pride 643T



CED	BW	WW	YW	RADG	DMI	YH	SC	DOC	PAP	
I+7	I+1.4	I+80	I+145	I+29	I+1.80	I+6	I+85	I+24	I+1.76	
CLAW	ANGLE	HP	CEM	Milk	MW	MH	CW	MRB	RE	FAT
I+3.8	I+4.4	I+13.0	I+13	I+29	I+67	I+5	I+61	I+1.13	I+1.15	I+0.05
HDSOK		SM	SW	SF	SG	SB	SC			
		+85	+85	+98	+83	+182	+321			

★ Owned with Lane View Farms.

80 Deer Valley Rita 11184

DOB: 01-28-2021 Cow Reg: *20666191 Tattoo: 11184

#SydGen Enhance #SydGen Exceed 3223
 #*S S ENFORCER E812 SydGen Rita 2618
 19274932 #S S Miss Daybreak K011 3K17 S S Daybreak K011
 S S Miss Incentive X19



#*TEX Playbook 5437 #*Basin Payweight 1682
 *DEER VALLEY RITA 8956 +*Rita 1C43 of 9M26 Complete
 19712300 +*Deer Valley Rita 6094 #*Plattmere Weigh Up K360
 *Deer Valley Rita 1320

CED	BW	WW	YW	RADG	DMI	YH	SC	DOC	PAP	
+6	+1.2	+78	+139	+27	+1.62	+5	+1.49	+22	+2.41	
CLAW	ANGLE	HP	CEM	Milk	MW	MH	CW	MRB	RE	FAT
+4.8	+5.4	+11.8	+10	+30	+56	+4	+49	+89	+40	+0.03
HDSOK		SM	SW	SF	SG	SB	SC			
HDSOK		+67	+86	+82	+62	+144	+254			

- ★ Rita 11184 is a balanced-trait and productive daughter of Enforcer and stems from a proven dam who combines the foundation Deer Valley sires, Playbook and Weigh Up.
- ★ Rita 11184 records a WR 2@114 and a YR 1@106, while showing ultrasound ratios IMF 1@106 and REA 1@118. The dam of Lot 80 carries an ultrasound IMF ratio 4@102.
- ★ Has a 12/6/25 bull calf, Lot 80A, by GAR Powercat, tattoo 5003.
- ★ Bred 2/25/26 to Yon Southern Rock.

80A Deer Valley Powercat 5003

DOB: 12-06-2025 Bull Reg: *21513856 Tattoo: 5003

*E & B Wildcat 9402 #*GAR Discovery 6737H
 *G A R POWERCAT E&B Lady Plus 643
 20665222 *Daltons Rita 0206 #*GB Fireball 672
 +*Daltons Rita 8225



#S S Enforcer E812 #SydGen Enhance
 *DEER VALLEY RITA 11184 #S S Miss Daybreak K011 3K17
 20666191 *Deer Valley Rita 8956 #*TEX Playbook 5437
 +*Deer Valley Rita 6094

CED	BW	WW	YW	RADG	DMI	YH	SC	DOC	PAP	
+11	-.3	+74	+154	+41	+1.50	+5	+1.86	+27	+5.2	
CLAW	ANGLE	HP	CEM	Milk	MW	MH	CW	MRB	RE	FAT
+4.4	+4.4	+13.0	+12	+29	+109	+7	+66	+1.10	+83	+0.04
HDSOK		SM	SW	SF	SG	SB	SC			
HDSOK		+53	+68	+120	+78	+199	+311			

81 Deer Valley Rita 1380

DOB: 03-21-2021 Cow Reg: +*20091191 Tattoo: 1380

#Jindra Acclaim #Jindra 3rd Dimension
 *T C A EASTWOOD +Jindra Blackbird Lassy 1111
 19531687 *T C A Marquis Treasure 711 +*Pine View Marquis P154
 *T C A Accruel Treasure 511



#*G A R Prophet #C R A Bextor 872 5205 608
 +*DEER VALLEY RITA 5503 +G A R Objective 1885
 18518323 +*G A R Progress 830 #*G A R Progress
 G A R 111 Rito 3346

CED	BW	WW	YW	RADG	DMI	YH	SC	DOC	PAP	
-3	+3.1	+65	+135	+36	+1.52	+7	+58	+19	+1.26	
CLAW	ANGLE	HP	CEM	Milk	MW	MH	CW	MRB	RE	FAT
+4.7	+4.8	+10.0	+6	+31	+61	+4	+71	+1.21	+82	+0.60
HDSOK		SM	SW	SF	SG	SB	SC			
HDSOK		+43	+57	+138	+79	+217	+324			

- ★ Rita 1380 is a productive daughter of the foundation Rita in the Jac's Ranch program Rita 5503, and sired by the proven outcross and phenotype sire, Eastwood.
- ★ Rita 1380 posts a BR 1@99 and a WR 1@99 while carrying an ultrasound IMF ratio 1@112. The dam of Lot 81 records a BR 2@95 and a WR 2@103 while showing ultrasound ratios IMF 18@111 and REA 18@100.
- ★ Bred 3/15/26 to PEAK Draft Pick.

81A Deer Valley Rita 5918

DOB: 11-05-2025 Cow Reg: 21511718 Tattoo: 5918

*Virginia Tech Statesman #*Tehama Patriarch F028
 *DEER VALLEY DIPLOMAT 3322 +*Vpi 310A Rita 9G6 Et
 20663492 *Deer Valley Lucy 9165 #*TEX Playbook 5437
 *Deer Valley Lucy 61150



*T C A Eastwood #*Jindra Acclaim
 +*DEER VALLEY RITA 1380 #T C A Marquis Treasure 711
 20091191 +*Deer Valley Rita 5503 #*G A R Prophet
 +*G A R Progress 830

CED	BW	WW	YW	RADG	DMI	YH	SC	DOC	PAP	
I+7	I+4	I+73	I+140	I+33	I+1.69	I+7	I+62	I+15	I-.24	
CLAW	ANGLE	HP	CEM	Milk	MW	MH	CW	MRB	RE	FAT
I+.52	I+.47	I+11.1	I+12	I+32	I+66	I+.6	I+75	I+1.23	I+.85	I+.069
HDSOK		SM	SW	SF	SG	SB	SC			
HDSOK		+59	+79	+131	+80	+212	+334			

Deer Valley Rita 1380 - Lot 81



82 **BF Beauty 1197**
 DOB: 10-20-2021 Cow Reg: 20272792 Tattoo: 1197

##Woodhill Blueprint
 *MYERS FAIR-N-SQUARE M39
 19418329 Myers Miss Beauty M136

##Connealy Confidence Plus
 *Woodhill Evergreen Z291-B233
 #Connealy Thunder
 #Myers Miss Beauty M476



##Hoover Dam
TLC BEAUTY 7091
 18967792 Britt Right Answer 5159

##SydGen C C & 7
 #Erica of Ellston C124
 #Connealy Right Answer 746
 +*KLR Beauty 2267

CED	BW	WW	YW	RADG	DMI	YH	SC	DOC	PAP	
+3	+2.1	+68	+116	+21	+95	+2	+77	+29	+1.61	
CLAW	ANGLE	HP	CEM	Milk	MW	MH	CW	MRB	RE	FAT
+4.44	+48	+14.4	-8	+33	+46	+1	+47	+72	+69	+038
ANGUS		SM	SW	SF	SG	SB	SC			
		+72	+77	+92	+55	+147	+263			

- ★ Beauty 1197 is an outcross dam who combines the ST Genetics roster member Fair-N-Square with a foundation daughter of the proven female sire Hoover Dam.
- ★ Beauty 1197 records a WR 2@104 and a YR 1@101 while carrying an ultrasound REA ratio 2@104. The dam of Lot 82 posts a WR 1@107.
- ★ **Due 11/8/26 to PEAK Draft Pick.**

83 **Deer Valley Rita 1265**
 DOB: 02-16-2021 Cow Reg: *20022120 Tattoo: 1265

##Connealy Confidence Plus
 #+*E&B PLUS ONE
 19196960 ##E&B Lady 1023 Precision 936

##Connealy Confidence 0100
 Elbanna of Conanga 1209
 #+E&B 1680 Precision 1023
 E&B Lady 878 New Design 441



##Plattemere Weigh Up K360
 *DEER VALLEY RITA 7025
 19097049 Deer Valley Rita 46136

##Sitz Upward 307R
 #Barbara of Plattemere 337
 #*A A R Ten X 7008 S A
 Deer Valley Rita 1653

CED	BW	WW	YW	RADG	DMI	YH	SC	DOC	PAP	
+9	+3	+63	+118	+32	+40	+3	-10	+10	+2.56	
CLAW	ANGLE	HP	CEM	Milk	MW	MH	CW	MRB	RE	FAT
+5.9	+3.8	+6.6	+6	+24	+55	+5	+47	+87	+55	-005
HDSOK		SM	SW	SF	SG	SB	SC			
		+37	+59	+104	+64	+169	+256			

- ★ Rita 1265 is an outcross female sired by the female sire Plus One, and stems from a dam who combines the Deer Valley phenotype female sire, Weigh Up with a daughter of the Pathfinder Sire, Ten X.
- ★ Rita 1265 carries an ultrasound IMF ratio 1@121. The dam of Lot 83 posts a BR 3@97, a WR 3@101 and a YR 3@101 while showing ultrasound ratios IMF 1@131 and REA 1@109.
- ★ **Bred 3/16/26 to Yon Southern Rock.**

82A **Deer Valley Beauty 5879**
 DOB: 10-30-2025 Cow Reg: 21511715 Tattoo: 5879

*Virginia Tech Statesman
 *DEER VALLEY DIPLOMAT 3322
 20663492 *Deer Valley Lucy 9165

##Tehama Patriarch F028
 +*Vpi 310A Rita 9G6 Et
 #+*TEX Playbook 5437
 *Deer Valley Lucy 61150



*Myers Fair-N-Square M39
BF BEAUTY 1197
 20272792 TLC Beauty 7091

##Woodhill Blueprint
 Myers Miss Beauty M136
 #Hoover Dam
 Britt Right Answer 5159

CED	BW	WW	YW	RADG	DMI	YH	SC	DOC	PAP	
I-10	I-2	I+74	I+130	I+25	I+140	I+5	I+72	I+20	I-07	
CLAW	ANGLE	HP	CEM	Milk	MW	MH	CW	MRB	RE	FAT
I+51	I+47	I+13.3	I+5	I+33	I+59	I+4	I+63	I+99	I+78	I+058
HDSOK		SM	SW	SF	SG	SB	SC			
		+74	+87	+109	+68	+177	+304			

- ★ Beauty 1197 records a WR 2@104 and a YR 1@101 while carrying an ultrasound REA ratio 2@104. The dam of Lot 82 posts a WR 1@107.

83A **Deer Valley Wizard 5926**
 DOB: 11-07-2025 Bull Reg: *21513664 Tattoo: 5926

+*Beal Breakthrough
 #+*ST WIZARD 1585
 21000000 +*ST Clarity 1072

+*G A R Prophet K263
 *H P C A Sure Fire S6
 *Connealy Clarity
 +*G A R Ashland 988



##E&B Plus One
 *DEER VALLEY RITA 1265
 20022120 *Deer Valley Rita 7025

##Connealy Confidence Plus
 #+E&B Lady 1023 Precision 936
 #*Plattemere Weigh Up K360
 Deer Valley Rita 46136

CED	BW	WW	YW	RADG	DMI	YH	SC	DOC	PAP	
+13	-4	+72	+130	+27	+131	+5	-21	+23	+2.30	
CLAW	ANGLE	HP	CEM	Milk	MW	MH	CW	MRB	RE	FAT
+4.3	+3.8	+11.8	+14	+23	+55	+5	+58	+1.28	+88	-012
HDSOK		SM	SW	SF	SG	SB	SC			
		+87	+72	+101	+88	+190	+333			

- ★ Rita 1265 is an outcross female sired by the female sire Plus One, and stems from a dam who combines the Deer Valley phenotype female sire, Weigh Up with a daughter of the Pathfinder Sire, Ten X.
- ★ Rita 1265 carries an ultrasound IMF ratio 1@121. The dam of Lot 83 posts a BR 3@97, a WR 3@101 and a YR 3@101 while showing ultrasound ratios IMF 1@131 and REA 1@109.
- ★ **Bred 3/16/26 to Yon Southern Rock.**



Deer Valley Farm

Angus Genetics Sale April 2026

APRIL 29TH • 7 PM CT / 8 PM ET

ALL LOTS WILL SELL X THE BID PRICE.
SHIPPING WILL BE THE RESPONSIBILITY OF THE BUYER

SALE MANAGERS



LARRY COTTON 517-294-0777
RYAN COTTON 706-206-8361
MIKE GOTHARD 540-894-1055
JERRY CRENSHAW 703-244-4767
ZACK HILEMAN 540-460-2776

www.cotton-associates.com

AUCTIONEER

Steve Bonham

Embryo packages of three sell with a guarantee of one pregnancy and embryo packages of four sell with a guarantee of two pregnancies.

Deer Valley
FARM



Owner: Fred Clark Family

Jonathan Perry, Gen. Manager 931/703-6330

Office: 931/433-1895 • Fax: 931/433-0730

Email: Jonathan Perry at

jjperry@deervalleyfarm.com

www.DeerValleyFarm.com

**THE EMBRYO EPDS IN THIS SALE BOOK ARE
PARENT AVERAGES ON APRIL 6, 2026**



Watch the Sale on CCI.live!

*The best, the fastest and most
comprehensive marketing & bidding tool!*

How to Bid Online...

- **As a buyer**, you DO NOT need to login to watch the sale but you must have a validated account to bid.

To **BID ONLINE** go to www.CCI.live in your Chrome, Firefox, Safari or other modern browser:

- 1) Click on the sale schedule page.
- 2) Click on the sale of interest.
- 3) Click on Bid Online- Register and then Get Buyer Number

- After you are logged in, you must proceed to the sale page for your auction and click Bid Online - Register, then **"Get Buyer Number."** Some auctions require valid credit card number on file to obtain a buyer number to bid.

- CCI.live will operate with ease on a modern **cellular device, laptop, desktop or tablet.**
- A **current browser** is important and will always make your experience better.

- **For successful bidding you must have good Internet service!** It is very important to be stationary if bidding. If you are driving and bidding, expect to have some service issues. If you are stationary on a good device, with healthy Internet, expect a very successful bidding environment. If you have slow Internet watch the "asking price" on the screen, it is real time, and refresh your browser if you feel like you have some lag.

- **Support line open during all sales. TEXT 405-400-9505** - Please alert the ranch for your hauling preferences.

Vintage Fanny 2651



Brumfield Pride 106



The \$250,000 donor dam of Lot 1.

The herd sire producing donor dam of Lots 2A and 2B.

1 DVF Three Fanny 2651 Embryos

- +*G A R Home Run
- *G A R GRAND SLAM
- 21179283
- +*G A R Sunbeam 332
- +*Beal Breakthrough
- *VINTAGE FANNY 2651
- 20434261
- +*Optum's Fanny 9530
- #*G A R Home Town
- +*Williams F Blackbird 705-429
- +*G A R Sunbeam
- +*G A R Identified N910
- +*G A R Prophet K263
- *H P C A Sure Fire S6
- +*V A R Power Play 7018
- +*Black Gold Fanny R713

PARENT AVERAGES										
CED	BW	WW	YW	RADG	DMI	YH	SC	DOC	PAP	
+15	-1	+98	+173	+36	+1.83	+8	+1.11	+32	+59	
CLAW	ANGLE	HP	CEM	Milk	MW	MH	CW	MRB	RE	FAT
+59	+52	+14.3	+16	+24	+97	+9	+96	+1.74	+1.44	+0.09
SM		SW		SF		SG		SB		SC
+90		+98		+154		+116		+271		+442

★ Selling three IVF embryos with a guarantee of one pregnancy if implanted by a certified technician.

- ★ Featuring two sets of embryos from the herd sire producing donor who will headline the 2026 Deer Valley Production Sale, Pride 106 sired by the \$300,000 multi-trait Deer Valley, Circle F Farms and Nowatzke Cattle Company leader, Kevlar 265 and the popular Genex roster member, Stapleton.
- ★ Pride 106, the donor dam of Lots 2A and 2B is a direct daughter of the headliner of the Oesterling Angus program, Pride 815 sired by the proven multi-trait female sire, Home Town.
- ★ Deer Valley Cabaret 4625, a maternal brother to Lots 2A and 2B was the \$40,000 top-selling and lead-off bull of the record-setting 2026 Deer Valley Spring Bull Sale.

2A DVF Four Pride 106 Embryos

- +*Beal Breakthrough
- *HNM KEVLAR 265
- 20884637
- +*BNWZ Lady 453-1244
- #*G A R Home Town
- *BRUMFIELD PRIDE 106
- 20052975
- +*Stevenson Pride 815
- +*G A R Prophet K263
- *H P C A Sure Fire S6
- *EXAR Grenade 9152B
- +*RB Lady Denver 167-453
- #*G A R Ashland
- *Chair Rock Sure Fire 6095
- +*Basin Payweight 1682
- +*Stevenson Pride I167x

PARENT AVERAGES										
CED	BW	WW	YW	RADG	DMI	YH	SC	DOC	PAP	
+8	+2.4	+87	+150	+31	+1.44	+1	+78	+21	-42	
CLAW	ANGLE	HP	CEM	Milk	MW	MH	CW	MRB	RE	FAT
+55	+47	+15.9	+11	+32	+82	+8	+89	+1.44	+1.36	+0.1
SM		SW		SF		SG		SB		SC
+95		+91		+144		+101		+246		+413

★ Selling four embryos with a guarantee of two pregnancies if implanted by a certified technician.

2B DVF Three Pride 106 Embryos

- +*SG Salvation
- *PEAK STAPLETON
- 20313395
- +*G A R Ashland 3159
- #*G A R Home Town
- *BRUMFIELD PRIDE 106
- 20052975
- +*Stevenson Pride 815
- +*Baldridge Alternative E125
- *MGR JP Rita 7037
- +*G A R Ashland
- +*G A R Momentum 2156
- #*G A R Ashland
- *Chair Rock Sure Fire 6095
- +*Basin Payweight 1682
- +*Stevenson Pride I167x

PARENT AVERAGES										
CED	BW	WW	YW	RADG	DMI	YH	SC	DOC	PAP	
+10	+1.8	+77	+138	+3	+1.28	+2	+49	+21	+52	
CLAW	ANGLE	HP	CEM	Milk	MW	MH	CW	MRB	RE	FAT
+51	+48	+13.1	+12	+25	+73	+2	+78	+1.4	+1.33	+0.4
SM		SW		SF		SG		SB		SC
+83		+73		+142		+96		+238		+392

★ Selling three IVF embryos with a guarantee of one pregnancy if implanted by a certified technician.

Spruce Mtn Rita K026



Deer Valley Linda 4752



The prolific donor dam of Lots 3A and 3B.

The \$30,000 featured second-generation Deer Valley Linda and donor dam of Lot 4.

3A **Four Rita K026 Embryos**

+*PEAK DRAFT PICK
20513315

*Connealy Clarity
+*Vintage Rita 0404

#*G A R Home Town
+*SPRUCE MTN RITA K026
20355885

#Cherry Creek Land Grant
*Breshie of Conanga 6988
#*GB Fireball 672
+*44 Rita 6291

#*G A R Ashland
+*Chair Rock Sure Fire 6095
#*G A R Sure Fire
+*Chair Rock Prophet 3054

PARENT AVERAGES										
CED	BW	WW	YW	RADG	DMI	YH	SC	DOC	PAP	
+6	+2.2	+82	+143	+31	+1.34	+7	+96	+28	+15	
CLAW	ANGLE	HP	CEM	Milk	MW	MH	CW	MRB	RE	FAT
+51	+43	+11.3	+10	+29	+70	+6	+81	+1.8	+1.19	+0.02
SM		SW		SF		SG		SB		SC
+80		+84		+141		+116		+258		+414

★ Selling four embryos with a guarantee of two pregnancies if implanted by a certified technician.

4 **Three Linda 4752 Embryos**

+*PEAK DRAFT PICK
20513315

*Connealy Clarity
+*Vintage Rita 0404

+*BNWZ Validity 2491
+*DEER VALLEY LINDA 4752
21163451

#Cherry Creek Land Grant
*Breshie of Conanga 6988
#*GB Fireball 672
+*44 Rita 6291

+*HPCA Veracious
+*RB Lady Denver 167-453
#*Deer Valley Growth Fund
+*Chair Rock Sure Fire 6095

PARENT AVERAGES										
CED	BW	WW	YW	RADG	DMI	YH	SC	DOC	PAP	
+9	+1.8	+90	+157	+33	+1.59	+7	+98	+25	+1.48	
CLAW	ANGLE	HP	CEM	Milk	MW	MH	CW	MRB	RE	FAT
+44	+39	+8.9	+12	+27	+79	+6	+91	+1.63	+1.07	+0.41
SM		SW		SF		SG		SB		SC
+76		+91		+149		+104		+253		+404

★ Selling three IVF embryos with a guarantee of one pregnancy if implanted by a certified technician.

3B **Three Rita K026 Embryos**

+*G A R WALLACE
20617150

*Basin Jameson 1076
+*Goode K263 Prophet 0323

#*G A R Home Town
+*SPRUCE MTN RITA K026
20355885

+*Basin Deposit 6249
*Basin Joy 9140
+*G A R Prophet K263
+*Goode Sunrise 7805

#*G A R Ashland
+*Chair Rock Sure Fire 6095
#*G A R Sure Fire
+*Chair Rock Prophet 3054

PARENT AVERAGES										
CED	BW	WW	YW	RADG	DMI	YH	SC	DOC	PAP	
+8	+1.3	+85	+147	+27	+1.84	+4	+55	+26	+28	
CLAW	ANGLE	HP	CEM	Milk	MW	MH	CW	MRB	RE	FAT
+48	+36	+10.7	+10	+32	+73	+4	+69	+1.94	+1.12	-0.01
SM		SW		SF		SG		SB		SC
+84		+94		+113		+123		+236		+390

★ Selling three embryos with a guarantee of two pregnancies if implanted by a certified technician.

- ★ Featuring two sets of embryos from the selection of Deer Valley in the 2023 Spruce Mountain Ranch Sale, Rita K026 sired by the multi-trait features, Draft Pick and Wallace.
- ★ Rita K026, the dam of Lots 3A and 3B is a royally bred Marb, RE, \$B and \$C female produced by the \$40,000 top-selling female of the 2020 Gardiner Angus Sale selected by Riverbend Ranch, Sure Fire 7003 sired by the record-selling bull of that same offering, Home Town.
- ★ Full and maternal siblings to the dam of Rita K026 include: Abundance 42F, the popular multi-trait Select Sires roster member; Bonfire, the growth and Marb. sire in the Gardiner Angus Ranch herd sire roster; and Sure Fire 187, the foundation donor in the West Angus program.

DVF Lady Empress 3656



The first calf heifer donor dam of Lot 5.

G3 Blackbird 3032



The \$80,000 donor dam of Lots 6A and 6B.

5 DVF Three Empress 3656 Embryos

+*Beal Breakthrough		+*G A R Prophet K263								
*HNM KEVLAR 265		*H P C A Sure Fire S6								
20884637		*EXAR Grenade 9152B								
+*BNWZ Lady 453-1244		+*RB Lady Denver 167-453								
*LAR Man In Black		#*Bar R Jet Black 5063								
*DVF LADY EMPRESS 3656		#JMB Maxine TG 2131								
20899713		Deer Valley Empress 0323								
+*Deer Valley Growth Fund		Britt Blackcap Empress 6137								
PARENT AVERAGES										
CED	BW	WW	YW	RADG	DMI	YH	SC	DOC	PAP	
+5	+2.9	+96	+171	+34	+2.21	+1.3	+92	+28	+1.7	
CLAW	ANGLE	HP	CEM	Milk	MW	MH	CW	MRB	RE	FAT
+5	+48	+15.5	+11	+35	+95	+1	+102	+1.4	+1.32	+0.3
SM		SW		SF		SG		SB		SC
+89		+102		+151		+97		+249		+411

★ Selling three IVF embryos with a guarantee of one pregnancy if implanted by a certified technician.

- ★ Featuring two sets of embryos from the \$80,000 headliner of the Blackbird family in the Deer Valley embryo program, Blackbird 3032 sired by the SC feature, Draft Pick and the proven genomic leader of the ORigen roster, True Balance.
- ★ Blackbird 3032, the donor dam of Lots 89A and 89B was selected as the top-selling bred heifer of the 2025 Gobbell G3 Sale and is a direct daughter of the \$20,000 headliner of the Blackcap family now in the Nowatzke Cattle Company donor program, Blackcap 9240 sired by the record-selling ST Genetics and Select Sires roster member, Craftsman.
- ★ Full and maternal sisters to the dam of Lots 6A and 6B include: Blackcap 3051, the \$100,000 lead-off female of the 2024 Gobbell G3 Sale selected by AAA Farms; Blackcap 1019, the \$85,000 second high-selling open heifer of the 2023 Gobbell G3 Sale selected by Circle G Ranches; Blackcap 4001, the \$70,000 selection of Express Ranches in the 2025 Gobbell G3 Sale; Blackbird 2411, the \$60,000 valued Gobbell and Vintage Angus highlight selling in that event; Blackbird 3034, the \$50,000 selection of AAA Farms in that offering; Blackcap 3042, the \$42,500 selection of Hopson Angus in the 2024 Gobbell G3 Sale; and Blackcap 3032, the \$22,000 selection of Pollard Farms in that offering.

6A DVF Four Blackbird 3032 Embryos

*Connealy Clarity		#Cherry Creek Land Grant								
+*PEAK DRAFT PICK		*Breshie of Conanga 6988								
20513315		+*Vintage Rita 0404								
+*Vintage Rita 0404		+*44 Rita 6291								
*Connealy Craftsman		#*Sitz Resilient 10208								
+*G3 BLACKBIRD 3032		#*Black Cathy of Conanga 8521								
20790725		+*Vintage Blackbird 9240								
+*Vintage Blackbird 9240		#*Bar R Jet Black 5063								
+*Vintage Blackbird 5396		+*Vintage Blackbird 5396								
PARENT AVERAGES										
CED	BW	WW	YW	RADG	DMI	YH	SC	DOC	PAP	
+8	+1.5	+90	+160	+32	+1.75	+8	+1.47	+22	+1.68	
CLAW	ANGLE	HP	CEM	Milk	MW	MH	CW	MRB	RE	FAT
+41	+38	+11.4	+11	+31	+67	+6	+83	+1.66	+1.12	+0.08
SM		SW		SF		SG		SB		SC
+93		+99		+135		+108		+244		+409

★ Selling four embryos with a guarantee of two pregnancies if implanted by a certified technician.

6B DVF Four Blackbird 3032 Embryos

#*G A R Home Town		#*G A R Ashland								
*RSA TRUE BALANCE 1311		+*Chair Rock Sure Fire 6095								
20129422		*RSA Forever Lady 9204								
+*RSA Forever Lady 9204		*RSA Forever Lady 7232								
*Connealy Craftsman		#*Sitz Resilient 10208								
+*G3 BLACKBIRD 3032		#*Black Cathy of Conanga 8521								
20790725		+*Vintage Blackbird 9240								
+*Vintage Blackbird 9240		#*Bar R Jet Black 5063								
+*Vintage Blackbird 5396		+*Vintage Blackbird 5396								
PARENT AVERAGES										
CED	BW	WW	YW	RADG	DMI	YH	SC	DOC	PAP	
+10	+1.1	+84	+148	+3	+1.45	+5	+1.48	+16	+1.37	
CLAW	ANGLE	HP	CEM	Milk	MW	MH	CW	MRB	RE	FAT
+43	+38	+11.3	+12	+33	+59	+3	+72	+1.63	+0.98	+0.17
SM		SW		SF		SG		SB		SC
+94		+94		+125		+105		+230		+392

★ Selling four embryos with a guarantee of two pregnancies if implanted by a certified technician.



EPF Rita L4036

The \$46,000 donor dam of Lot 7.

7 DVF Three Rita L4036 Embryos

*Connealy Clarity #Cherry Creek Land Grant
****PEAK DRAFT PICK** *Breshie of Conanga 6988
 20513315 +*Vintage Rita 0404 #*GB Fireball 672
 +*44 Rita 6291
 *Basin Jameson 1076 +*Basin Deposit 6249
****EPF RITA L4036** *Basin Joy 9140
 20832612 +*HR Rita 9204 #+*Deer Valley Growth Fund
 +*G A R Progress 830

PARENT AVERAGES										
CED	BW	WW	YW	RADG	DMI	YH	SC	DOC	PAP	
+11	+1.1	+94	+163	+3	+2.19	+9	+97	+26	+1.26	
CLAW	ANGLE	HP	CEM	Milk	MW	MH	CW	MRB	RE	FAT
+4.4	+4.2	+9.4	+13	+33	+90	+8	+89	+1.81	+1.06	+0.2
SM		SW		SF		SG		SB		SC
+75		+104		+136		+114		+250		+400

- ★ Selling three embryos with a guarantee of one pregnancy if implanted by a certified technician.
- ★ Featuring a set of embryos from the \$46,000 selection of Deer Valley and Hughes Farm in the record-breaking 2025 Edisto Pines Farm Sale Rita L4036, sired by the proven multi-trait leader of the GENEX roster, Draft Pick.
- ★ Rita L4036, the donor dam of Lot 90, is a sensational combination first calf heifer and daughter of the \$175,000 Edisto Pines Farm headliner Rita 9204 and sired by the multi-trait and record-selling Jameson.
- ★ Full and maternal sisters to the dam of Lot 7 include: Rita K1058, the \$80,000 featured and second high-selling open heifer of the 2023 Edisto Pines Sale selected by Circle G Ranches; Rita K1068, the \$50,000 selection of Pleasant Valley Farms in the 2024 Edisto Pines Sale; Rita L4034, selected in that offering by Circle F Farms; and Rita L4033, selling to Cantrell Land and Cattle in that same event.

8 DVF Four Lady 3047 Embryos

*Connealy Clarity #Cherry Creek Land Grant
****PEAK DRAFT PICK** *Breshie of Conanga 6988
 20513315 +*Vintage Rita 0404 #*GB Fireball 672
 +*44 Rita 6291
 *Connealy Commerce +*G A R Sunbeam
****BRUMFIELD LADY 3047** *Avira of Conanga 814R
 20744748 *Brumfield Lady Onyx 1151 *Crouch Black Onyx 926
 +*Pasture View Lady A789

PARENT AVERAGES										
CED	BW	WW	YW	RADG	DMI	YH	SC	DOC	PAP	
+10	+8	+85	+150	+31	+1.66	+7	+1.31	+22	-.59	
CLAW	ANGLE	HP	CEM	Milk	MW	MH	CW	MRB	RE	FAT
+5.4	+4.9	+10.3	+13	+29	+71	+6	+79	+1.61	+1.1	+0.22
SM		SW		SF		SG		SB		SC
+72		+92		+129		+105		+235		+376

- ★ Selling four embryos with a guarantee of two pregnancies if implanted by a certified technician.
- ★ Selling a set of embryos from the featured member of the Lady family in the Deer Valley embryo program, Lady 3047, sired by the proven leader of the GENEX roster, Draft Pick.
- ★ Lady 3047, the donor dam of Lot 8, is a direct daughter of the longtime Brumfield Angus donor Lady Onyx 1151 and is sired by the proven phenotype female sire leading the ST Genetics roster, Commerce.



Brumfield Lady 3047

The foundation Deer Valley Lady and donor dam of Lot 8.



Pollard Lady 3747

The \$100,000 donor dam of Lot 9.

9 DVF Four Lady 3747 Embryos

*Basin Jameson 1076 +*Basin Deposit 6249
****G A R WALLACE** *Basin Joy 9140
 20617150 +*Goode K263 Prophet 0323 +*G A R Prophet K263
 +*Goode Sunrise 7805
 *Connealy Commerce +*G A R Sunbeam
****POLLARD LADY 3747** *Avira of Conanga 814R
 20710417 *E&B Lady Sure Fire 788 #+*G A R Sure Fire
 +*E&B Lady Plus 516

PARENT AVERAGES										
CED	BW	WW	YW	RADG	DMI	YH	SC	DOC	PAP	
+11	+7	+90	+156	+28	+2.13	+5	+1.33	+25	+2.3	
CLAW	ANGLE	HP	CEM	Milk	MW	MH	CW	MRB	RE	FAT
+4.8	+4.1	+9.8	+13	+31	+80	+5	+74	+1.8	+1.06	+0.22
SM		SW		SF		SG		SB		SC
+86		+100		+113		+114		+226		+380

- ★ Selling four IVF embryos with a guarantee of two pregnancies if implanted by a certified technician.
- ★ Featuring a set of embryos from the \$100,000 headliner of the record-setting 2025 Pollard Farms Sale, Lady 3747, and sired by the exciting young multi-trait sire, Wallace.
- ★ Lady 3747, the donor dam of Lot 9, is a direct daughter of the former Pollard donor now in the Katie Colin Farm donor program, Sure Fire 788, sired by the \$185,000 leader of the ST Genetics roster, Commerce.
- ★ Maternal siblings to the dam of Lot 9 include females in the Edisto Pines Farm, Four Sons Farm, Spruce Mountain Ranch, KL3 Farms, and Lone Star Angus programs.

Deer Valley Henrietta 3240



A fourth-generation Deer Valley donor and dam of Lot 13.

13 DVF

Three Henrietta 3240 Embryos

*SG Salvation
+*PEAK STAPLETON
 20313395 +*G A R Ashland 3159

+*Beal Breakthrough
+*DEER VALLEY HENRIETTA 3240
 20667786 +*Deer Valley Henrietta 8708

##*Baldridge Alternative E125
 +*MGR JP Rita 7037
 ##*G A R Ashland
 +*G A R Momentum 2156

+*G A R Prophet K263
 *H P C A Sure Fire S6
 ##*Casino Bomber N33
 +*Deer Valley Henrietta 3671

PARENT AVERAGES										
CED	BW	WW	YW	RADG	DMI	YH	SC	DOC	PAP	
+14	+1	+82	+148	+29	+1.98	+2	+28	+28	+15	
CLAW	ANGLE	HP	CEM	Milk	MW	MH	CW	MRB	RE	FAT
+49	+4.5	+11	+13	+22	+81	+4	+80	+1.59	+1.33	+0.56
SM		SW		SF		SG		SB		SC
+76		+77		+134		+105		+239		+385

- ★ Selling three embryos with a guarantee of one pregnancy if implanted by a certified technician.
- ★ Featuring a set of embryos from the highlight of the Alli Perry program and fourth-generation member of the legendary Henrietta Pride family in the Deer Valley program, Henrietta 3240, and sired by the multi-trait Salvation son, Stapleton.
- ★ Henrietta 3240, the dam of Lot 13, is a first calf heifer and exciting young member of the Deer Valley donor program who blends the multi-trait leader of the ST Genetics roster Breakthrough with a dam who combines the outcross female sires Bomber and Power Tool with the legendary matriarch and \$8.5 million producer, Henrietta Pride 643T.

14 DVF

Three Erica GA 3733 Embryos

*SG Salvation
+*PEAK STAPLETON
 20313395 +*G A R Ashland 3159

*Basin Jameson 1076
+*SYDGEN ERICA GA 3733
 20941728 ##*SydGen Erica 6071

##*Baldridge Alternative E125
 +*MGR JP Rita 7037
 ##*G A R Ashland
 +*G A R Momentum 2156

+*Basin Deposit 6249
 *Basin Joy 9140
 *SydGen Straight Up 8998
 ##*SydGen Erica 0375

PARENT AVERAGES										
CED	BW	WW	YW	RADG	DMI	YH	SC	DOC	PAP	
+11	+1	+77	+140	+27	+1.98	+2	+56	+15	+1.66	
CLAW	ANGLE	HP	CEM	Milk	MW	MH	CW	MRB	RE	FAT
+49	+4.8	+9.5	+11	+30	+78	+2	+83	+1.65	+1.21	+0.63
SM		SW		SF		SG		SB		SC
+61		+80		+137		+105		+243		+375

- ★ Selling three IVF embryos with a guarantee of one pregnancy if implanted by a certified technician.
- ★ Featuring a set of embryos from the \$50,000 selection of Deer Valley and Jenkins Angus in the record-setting 2025 Spruce Mountain Ranch Sale, Erica GA 3733 sired by the proven GENEX roster member, Stapleton.
- ★ Erica GA 3733, the dam of Lot 14, is a calving-ease, HS, Marb., \$W, \$B and \$C direct daughter of the foundation headliner of the Sydenstricker Genetics donor program, Erica 6071, sired by the record-selling multi-trait headliner, Jameson.

PEAK Stapleton



Sire of Lot 14.

Deer Valley Rita 3662



The \$75,000 valued donor dam of Lot 15.

15 DVF

Four Rita 3662 Embryos

*SG Salvation
+*PEAK STAPLETON
 20313395 +*G A R Ashland 3159

*Connealy Commerce
+*DEER VALLEY RITA 3662
 20899722 +*Deer Valley Rita 81220

##*Baldridge Alternative E125
 +*MGR JP Rita 7037
 ##*G A R Ashland
 +*G A R Momentum 2156

+*G A R Sunbeam
 *Avira of Conanga 814R
 ##*TEX Playbook 5437
 +*G A R Progress 830

PARENT AVERAGES										
CED	BW	WW	YW	RADG	DMI	YH	SC	DOC	PAP	
+11	+5	+78	+144	+29	+1.86	+1	+48	+27	+1.2	
CLAW	ANGLE	HP	CEM	Milk	MW	MH	CW	MRB	RE	FAT
+51	+5.4	+9.9	+14	+32	+73	+3	+78	+1.26	+1.15	+0.63
SM		SW		SF		SG		SB		SC
+75		+84		+132		+86		+217		+356

- ★ Selling four embryos with a guarantee of two pregnancies if implanted by a certified technician.
- ★ Featuring a set of embryos from the \$75,000 valued half-interest selection of AAA Farms in the record-setting 2025 Deer Valley Sale, Rita 3662 sired by the proven GENEX roster member Stapleton.
- ★ Rita 3662, the donor dam of Lot 15, is a powerful calving-ease, PAP and \$W daughter of the \$60,000 foundation Edisto Pines Farm donor, Rita 81220 sired by the longtime leader of the ST Genetics roster, Commerce.
- ★ Full and maternal siblings to the dam of Lot 98 include: Rita 31105, the \$75,000 selection of Riverbend Ranch in the 2023 Deer Valley Sale; Rita 3717, the \$25,000 selection of Circle F Farms in the 2024 Deer Valley Sale; Rita 3329, the \$25,000 female selected by Jocko Valley Angus in the 2023 Deer Valley Sale; and Iconic 2213, the \$22,000 selection of Hughes Farm as the third high-selling bull of that record-setting bull sale.

- ★ Featuring a set of embryos from the second-generation Hazel in the Deer Valley donor program, Hazel 1905 sired by the multi-trait headliner, Wallace.
- ★ Hazel 1905, the dam of Lot 16, is a direct daughter of the \$300,000 valued Deer Valley and Spruce Mountain Ranch donor Hazel F478 sired by the one-time breed registration leader, Growth Fund. Full and maternal siblings to Hazel 1905 include: Apache, the lead-off bull of the 2022 Deer Valley Bull Sale and the Select Sires roster member selected by Elite Cattle Company for \$120,000; Hazel 1321, the \$60,000 valued half-interest selection of Spruce Mountain Ranch in the 2021 Deer Valley Sale; Hazel 1321, the \$55,000 valued half-interest selection of Hughes Farm in the 2023 Deer Valley Farm Sale; and Hazel 1829, the \$35,000 selection of Brumfield Angus in the 2023 Spruce Mountain Ranch Sale.

Yon Hazel 1905



The herd sire producing dam of Lot 16.

16 Three Hazel 1905 Embryos

- *Basin Jameson 1076
- +*G A R WALLACE 20617150
- +*Goode K263 Prophet 0323
- ##*Deer Valley Growth Fund
- *DEER VALLEY HAZEL 1905 20242092
- +*Yon Hazel F478
- +*Basin Deposit 6249
- *Basin Joy 9140
- +*G A R Prophet K263
- +*Goode Sunrise 7805
- ##*Basin Payweight 1682
- +*Deer Valley Rita 36113
- ##*G A R Sunrise
- *Yon Hazel B334

PARENT AVERAGES										
CED	BW	WW	YW	RADG	DMI	YH	SC	DOC	PAP	
+11	+2	+93	+159	+29	+1.89	+4	+4	+23	+3.08	
CLAW	ANGLE	HP	CEM	Milk	MW	MH	CW	MRB	RE	FAT
+41	+41	+10.3	+15	+29	+83	+3	+70	+1.6	+91	+0.13
SM		SW		SF		SG		SB		SC
+85		+103		+110		+103		+213		+361

★ Selling three embryos with a guarantee of one pregnancy if implanted by a certified technician.

17 Four Rita J151 Embryos

- +*Basin Deposit 6249
- *BASIN JAMESON 1076 20071781
- *Basin Joy 9140
- +*EZAR Step Up 9178
- +*EPF RITA J151 20175091
- +*EXAR Rita 7672
- ##*Basin Advance 3134
- +*Basin Lucy 4288
- ##*EXAR Monumental 6056B
- +*Basin Joy 5367
- *G A R Big Step K715
- +*Basin Lucy 4261
- ##*EXAR Stud 4658B
- +*G A R Sunrise 1482

PARENT AVERAGES										
CED	BW	WW	YW	RADG	DMI	YH	SC	DOC	PAP	
+6	+2.2	+92	+156	+25	+2.17	+8	+8.2	+25	+4.4	
CLAW	ANGLE	HP	CEM	Milk	MW	MH	CW	MRB	RE	FAT
+43	+41	+11	+10	+29	+99	+6	+75	+1.73	+69	+0.51
SM		SW		SF		SG		SB		SC
+74		+93		+109		+104		+213		+350

★ Selling four embryos with a guarantee of two pregnancies if implanted by a certified technician.



EPF Rita J151

- ★ Cattle Company in the 2023 Edisto Pines Farm Sale, Rita J151 sired by the proven multi-trait and record-selling Jameson.
- ★ Rita J151, the donor dam of Lot 17 is a direct daughter of the \$80,000 Edisto Pines Farm and Horn Family donor, Rita 7672 sired by the proven low-birth and marbling female sire, Stud 4658B. Full and maternal sisters to the dam of Lot 100 include: Rita J158, the \$170,000 top-selling female of the 2023 Edisto Pines Farm Sale selected by Spruce Mountain Ranch and Express Ranches; Rita F76, the \$130,000 valued Spruce Mountain Ranch, Express Ranches and Wilks Ranch highlight of the 2020 Express Ranches Big Event; and Rita J399 selling in the 2023 Edisto Pines Sale to KL3 Farms for \$25,000.
- ★ Rita 5249, a maternal sister to Lot 100 was the \$25,000 selection of Riverbend Ranch in the record-setting 2025 Deer Valley Sale.

The \$145,000 donor dam of Lot 17.

Deer Valley Blackcap 1801

- ★ Selling a set of embryos from the fourth-generation Deer Valley Blackcap, Blackcap 1801 sired by the proven headliner of the Baldrige Performance Angus and Grimmus Cattle Company rosters, Incognito J852.
- ★ Blackcap 1801, the dam of Lot 18 blends the proven Deer Valley herd sires, the breed registration leader, Growth Fund and Old Hickory with a direct daughter of the \$50,000 former Deer Valley donor, Blackcap 2357 by the legendary female sire, Consensus.



Donor dam of Lot 18.

18 Three Blackcap 1801 Embryos

#*Mill Brae Identified 4031
+*BALDRIDGE INCOGNITO J852
 20184105 +*Baldrige Isabel E048

#*Koupals B&B Identity
 *Mill Brae Pro Blackcap 1092
 #*Connealy Confidence Plus
 *Baldrige Isabel Y69

#+*Deer Valley Growth Fund
+*DEER VALLEY BLACKCAP 1801
 20242110 *Deer Valley Blackcap 72106

#+*Basin Payweight 1682
 +*Deer Valley Rita 36113
 #+*Deer Valley Old Hickory
 +*Deer Valley Blackcap 3188

PARENT AVERAGES										
CED	BW	WW	YW	RADG	DMI	YH	SC	DOC	PAP	
+9	+7	+82	+146	+34	+1.02	+6	+58	+18	+3.61	
CLAW	ANGLE	HP	CEM	Milk	MW	MH	CW	MRB	RE	FAT
+49	+47	+11.4	+7	+32	+76	+6	+77	+94	+1.14	+0.25
		\$M	\$W	\$F	\$G	\$B	\$C			
		+73	+91	+138	+73	+211	+347			

- ★ Selling three embryos with a guarantee of one pregnancy if implanted by a certified technician.

19 Four Rita 3692 Embryos

+*Yon Saluda
+*YON SOUTHERN ROCK
 21063553 #+*Yon Witch J91

#*Sitz Stellar 726D
 +*Yon Sarah D668
 #*Yon Chattooga E46
 +*Yon Witch F18

*Connealy Commerce
+*DEER VALLEY RITA 3692
 20877919 +*Cigar EPF Rita 0154

+*G A R Sunbeam
 *Avira of Conanga 814R
 #+*Deer Valley Growth Fund
 *Cigar Rita of 4100 7070

PARENT AVERAGES										
CED	BW	WW	YW	RADG	DMI	YH	SC	DOC	PAP	
+14	+3	+94	+159	+29	+2.05	+6	+49	+20	+4.8	
CLAW	ANGLE	HP	CEM	Milk	MW	MH	CW	MRB	RE	FAT
+45	+39	+11.3	+15	+27	+105	+8	+82	+98	+1.14	0
		\$M	\$W	\$F	\$G	\$B	\$C			
		+84	+98	+121	+76	+198	+341			

- ★ Selling four IVF embryos with a guarantee of two pregnancies if implanted by a certified technician.

Cigar EPF Rita 0154



The maternal grandam of Lot 19.

- ★ Featuring a set of embryos from the cornerstone Rita in the Deer Valley and Windy Hill Meadows joint embryo programs Rita 3692, and sired by the sensational and exciting young sire in the Deer Valley and Circle F Farms herd sire rosters, Southern Rock.
- ★ Rita 3692, the dam of Lot 19, is a direct daughter of the prolific former Deer Valley donor now in the Hill Top Angus program Rita 0154 and sired by the proven female sire in the ST Genetics roster, Commerce.
- ★ Maternal siblings to the dam of Lot 102 include: Rita 1721, the \$200,000 valued half-interest headliner of the 2022 Deer Valley Farm Sale selected by Pollard Farms; Cigar City Cattle Company selection in the March 2022 Deer Valley LiveOnline Embryo sale for \$2,900 each as the top-selling lot of that offering; a set in the October 2022 Deer Valley LiveOnline Sale for \$2,600 each to Chessie Creek Angus, and another set selling to Elm Tree Farms in the November 2022 Deer Valley LiveOnline Sale for \$1,300 each.

Deer Valley FARM



Owners: The Fred Clak Family
Gen. Manager: Jonathan Perry - 931.703.6330
11 Fred Clark Lane - Fayetteville, TN 37334
Office: 931.433.1895 • Fax: 931.433.0730
Email Jonathan: jjperry@DeerValleyFarm.com
www.DeerValleyFarm.com

SALE
MANAGED
BY:



131 Robin Ct.
Howell, MI 48855
517-546-6374
www.cotton-associates.com

**PLEASE NOTE: The sale is NOT at the location of our Main Office
Address for Sale Facility: 62 Pitts Bend Rd, Fayetteville, TN 37334**