



ANGUS FEMALES

SPRING SALE | ONLINE AT CCI.LIVE | MAY 7, 2026 | 7:00 PM (CDT)





Live
ONLINE VIA CCI.LIVE





SALE SCHEDULE

**THURSDAY,
MAY 7, 2026**

7:00 PM (CDT) FEMALE SALE BEGINS ONLINE



Visit **44FARMS.COM**
to view this sale book online

UPCOMING SALES

SEPTEMBER 2026
SMARTAUCTIONS ONLINE FEMALE SALE

OCTOBER 24, 2026
FALL BULL SALE



CONTENTS

3 SALE INFORMATION

Spring is here, and with it a sense of renewal. As nature comes back to life, we are reminded of the rebirth that God builds into His creation.

4 NOTE FROM BOB

We are so fortunate to be in production agriculture. We get to see God's work up close each and every day. His Word and His work are timeless, and therefore always relevant.

5 HOW TO PLACE YOUR BID

As we go about our calling, it is important that we direct our time, energy and resources toward assets and programs that truly make a difference and create rewarding working relationships. That's why we are honored that you have taken the time to check out our 2026 44LIVE Online Spring Female Sale offering. There are opportunities on every page to impact and move your program forward.

6 44 FARMS GENETICS ONLINE STOREFRONT

Please join us on Thursday, May 7, at 7:00 PM (CDT) for this special opportunity, via CCI.Live. We never take the great honor and privilege of working with you for granted. May God bless and lead you with His loving grace.

8 MEET OUR TEAM

YOUR FRIENDS AT 44 FARMS

9 THE FUTURE IS HERE

SALE CONTACTS

11 44 FARMS ALL-NATURAL ANGUS BEEF: TONIGHT'S MENU

Kiefer Peckham (512) 705-6633	Jeff Callaway (325) 665-2285
Tyler Gray (208) 590-6167	Mark Stansell (325) 207-2169
Mason Holmes (979) 676-6064	Will Doran (325) 370-4003
Tomas Cardona (254) 541-8529	Carson Huguenard (713) 400-4049
Tyler Gideon (308) 214-1489	Ryan Cotton (706) 206-8361
Bruce Kiesewetter (319) 750-4555	Larry Cotton (517) 294-0777
James Burks (254) 718-5193	Mike Gothard (540) 894-1055
Doug Slattery (979) 451-2003	Jerry Crenshaw (703) 244-4767

13 REGISTERED FEMALES

AUCTIONEERS

Steve Dorran (760) 972-7736

SPECIAL ASSIGNMENT

Terry Cotton (816) 390-3227

SALE INFORMATION

SALE DAY UPDATES

Updates available the day of the sale at **44Farms.com** and **CCI.Live**.

ANNOUNCEMENTS

Any announcements from the sale block will take precedence over printed material.

INSURANCE

Insurance will be available through James F. Bessler Inc. at (815) 762-2641 to insure your purchase.

TRUCKING

Truckers believed to be reliable will be available. Please notify Kiefer Peckham at (512) 705-6633 if you need assistance with trucking.



CONVENIENCE FEE

There is a **3% Convenience Fee** for any credit/debit card transactions for cattle and/or genetics.

TERMS & CONDITIONS

Terms of sale are cash, check, Visa or Mastercard with a 3% Convenience Fee for cattle and/or genetics unless prior arrangements have been made. Transfer of registration papers will not be made until payment is made in full. Cattle will sell under the Standard Terms and Conditions of the American Angus Association. If unfamiliar with these Standard Terms and Conditions, please obtain a copy from any American Angus Association Regional Manager.

ABSENTEE BIDS

Buyers unable to connect via **CCI.Live** should contact our 44 Farms team.

HEALTH PAPERS

All cattle sold will be accompanied by appropriate health papers for immediate intrastate shipment. Additional health testing may be required for interstate shipment.

EPDS

EPDs current as of **April 10, 2026**. Updated EPDs can be viewed online at **Angus.org**.

VIDEOS

Videos will be available at **44Farms.com**.

JOIN US ONLINE!

The sale will be conducted in real time with an auctioneer – just like a traditional auction, except the sale venue is online. Go to the sale page at **CCI.Live** and register to bid.

You will see the video and the lot information and hear the auctioneer. View the sale from your phone, tablet or desktop computer and bid with confidence! Download the app for your iPhone or find us on Google Play.

For help, contact (405) 400-9505 text or voice.



A NOTE *from* BOB

“And I heard a loud voice from the throne, saying... (4) He shall wipe away every tear from their eyes; and there shall no longer be any death; there shall no longer be any mourning, or crying, or pain; the first things have passed away.”

REVELATION 21:3-4



Spring is here and with it, a sense of renewal. We feel energized in mind, body and spirit. Not only does springtime bring an abundance of beauty and hope, but it also brings a wide array of opportunities.

In fact, “opportunity” is always the operative word at 44 Farms. We have been, and continue to be, extremely blessed with opportunities to impact the lives and businesses of customers through our proven Angus Strong® genetics program. It continues to drive and produce traits that our customers find to have the greatest economic impact on their herds, with balanced EPD profiles.

I want to personally invite you to join us on Thursday, May 7, at 7:00 PM (CDT) for our first 44LIVE Online Female Sale of 2026. This will be our 19th 44LIVE Online Female Sale and we have really enjoyed our work with CCI.Live. Their technology is extraordinary and the format is super convenient.

As you read and consider the opportunities in this sale offering, please know that everything was prayed, planned and prepared for to help you be more successful and profitable. That’s right. You are why we were called to the business and your friendship and investment in

our work enables us to offer these genetics. I believe that you will find opportunities in this offering that can advance your program.

While this sale will be broadcast live online via CCI.Live, our 44 Farms team will all be together at the ranch. So, if you are in the area or would like to make a trip to see us on May 7, we would welcome you to join us in person.

I know this – there is more room in my life for the things of God and the people of God than I could have ever imagined. So, our team would love to see you. You inspire us because your life is a story to tell. And yes, I do believe that through Jesus, “greater things are yet to come.”



Bob

Bob McClaren, 44 Farms

X @44MCCLAREN Instagram @BOBMCCLAREN

HOW *to* PLACE YOUR BID

For the 44LIVE Online Spring Female Sale, 44 Farms has partnered with **CCI.Live** to conduct our sale in real time with an auctioneer – just like a traditional auction, except the sale venue will be strictly online.



Go to the sale page at **CCI.Live** and register to bid. You will see the video and the lot information and hear the auctioneer. View the sale from your phone, tablet or desktop computer and bid with confidence!

You can always view an auction without signing in. You must only sign in if you plan to bid on cattle. If you plan to bid on livestock, you must create a new account and then request bidding credentials at **CCI.Live**. Once you are approved the first time, you do not need to go through the process for each sale.

Please request approval for bidding credentials preferably at least 2–4 hours prior to sale time, if not sooner. Please do not wait until sale time to request bidding credentials, as you may not be approved quickly.

When you create an account, please use a valid email address. If in the future you forget your bidder's password, you can reset it immediately through the email on your account.



STEP 1: CREATE AN ACCOUNT & REQUEST YOUR BIDDING CREDENTIALS



STEP 2: REGISTER FOR YOUR SPECIFIC BIDDER NUMBER

Please note that the asking price on the screen is real time! Screen or asking price takes precedence over audio & voice. This means that if you have a slow internet connection, the auctioneer may be 1–2 seconds behind the screen price that is showing.

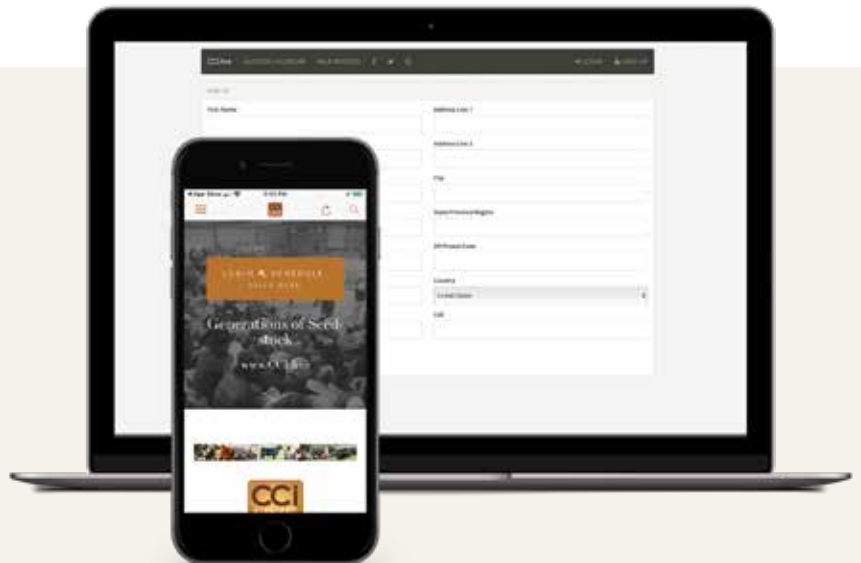
The screen price is the asking bid at the auction and there is no delay, so you can bid with confidence by watching only the screen asking price.

If you have a slow internet connection, we recommend that you turn off the audio and only watch the asking price box. The audio and video are for entertainment purposes only. You can also phone in to place your bids if you feel that your internet connection is not acceptable.

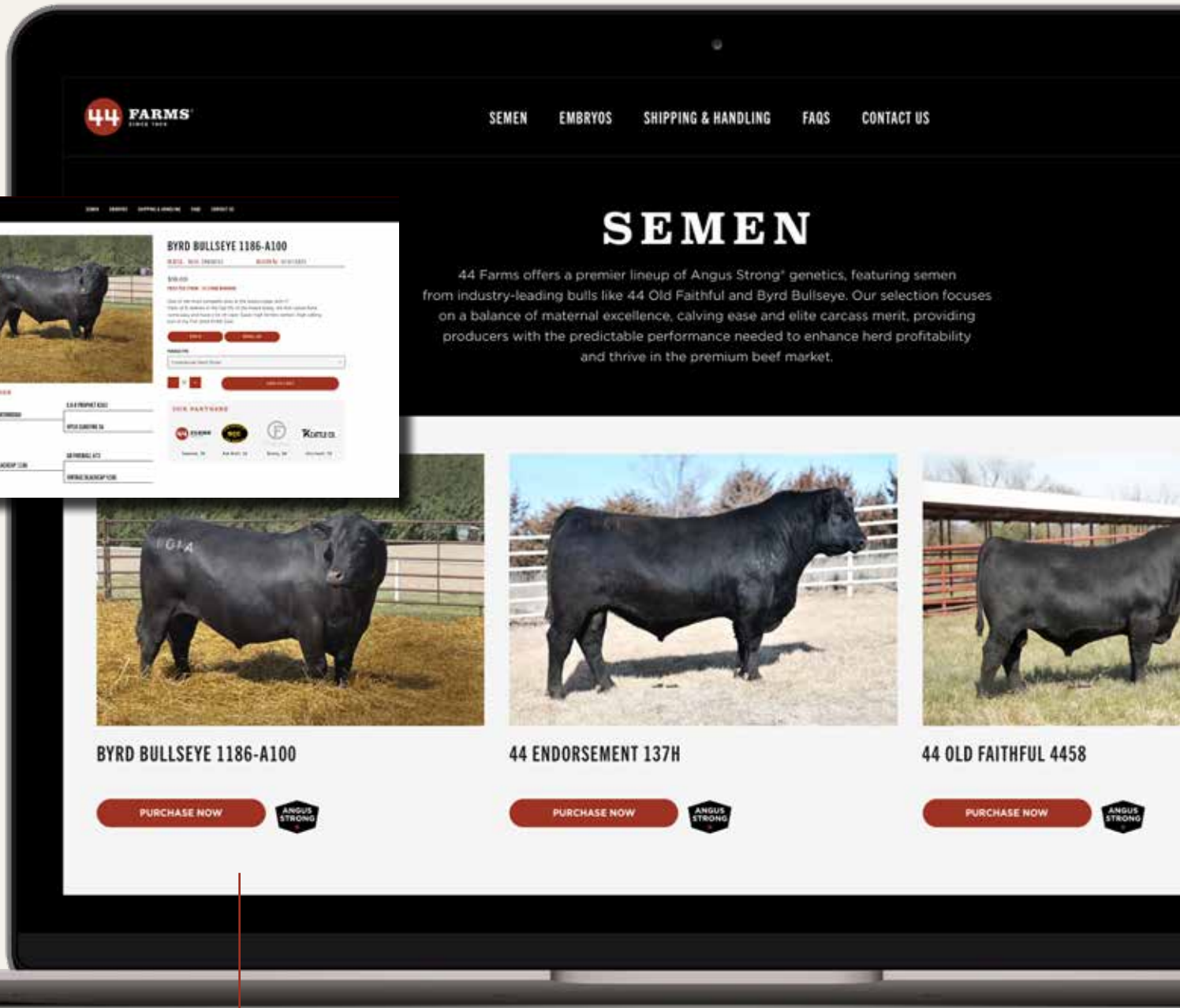


DOWNLOAD THE CCI.LIVE APP ON YOUR MOBILE DEVICE

View the sale from your phone, tablet or desktop computer and bid with confidence! Download the app for your iPhone or find us on Google Play.



44farmsgenetics.com is live!



HERD SIRES

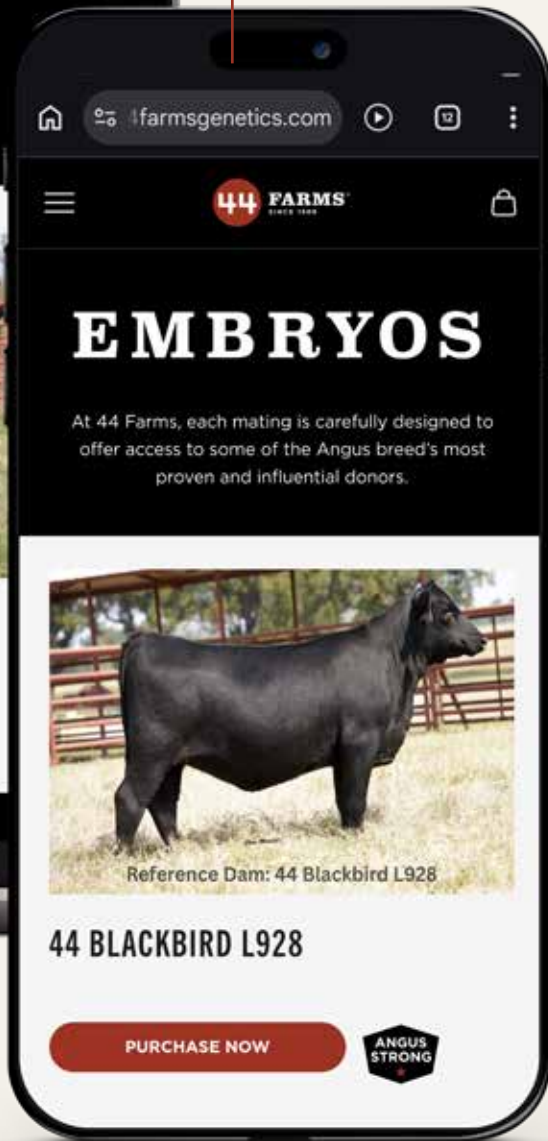
Don't Just Buy Genetics, Invest in a Performance Program

The 44 Farms Angus Strong® program is backed by an outstanding herd sire lineup. These top sires provide balanced genetic profiles, performance and carcass results, giving producers confidence no matter the conditions.

DONORS

Poised to Lead the Next Generation

Our females represent generations of disciplined selection, backed by our proven Angus Strong® genetics. Centered on maternal strength, structural integrity, and long-term productivity, they deliver the consistency and predictability needed to move herds forward.



FAQ

How are semen and embryos shipped?

All semen and embryos are shipped in liquid nitrogen dry vapor shippers designed to maintain proper temperature throughout transit. Shipments are carefully coordinated to ensure product integrity and timely delivery.

Who pays for shipping?

Shipping costs are calculated at checkout and vary based on location, tank type and carrier.

When will my order ship?

Orders are typically processed within 2–4 business days. A member of our team may contact you to confirm delivery details prior to shipment.

Do I need to provide a semen tank?

No. Orders are shipped in a rental dry shipper. A prepaid return label will be included with your shipment.

Is inventory live on the website?

Yes. Inventory reflects available units at the time of purchase. Quantities are limited.

Can I place a bulk or volume order?

Yes. Volume pricing may be available on qualifying sires. Please contact our office for details at (254) 697-4401 or email us at sales@44farms.com.

Are EPDs provided?

Yes. All sires and donors include current EPDs and performance information to assist in your breeding decisions.



Scan or click QR code to visit the site now.

MEET OUR TEAM



BOB McCLAREN

President & CEO

KIEFER PECKHAM

Chief Genetics Officer

BJ McELROY

CFO & COO – Beef Programs

WARREN WHITE 

Chief Procurement Officer

JB HOPKINS

Chief Branding Officer

ZACH HARDY 

*Chief Accounting Officer,
44 Farms & Prime Pursuits*

TYLER GRAY

*Director of Genetic Sales &
Producer Relations – Western U.S.*

MARK STANSELL

Director of Farm Operations

TRACY WOODS

*44 Farms Consulting Services –
Managing Director*

TOMAS CARDONA

Asst. Director of Cattle Operations

TYLER GIDEON

Director of Cowherd Development

BRUCE KIESEWETTER

Director of Bull Development

CARSON HUGUENARD

Asst. Director of Bull Development

GEORGE RATLIFF

Associate Manager – Cow Herd

MASON HOLMES

Multimedia Manager

ABEL GONZALES

Nutrition Manager

JAMES BURKS

Director of Customer Experience

WAYNE KIRK

Feed Specialist

ALMA CANTÚ TREJO

Director of Finance

TOMMY THOMAS

Director of Business Development

DENISE TOW

Executive Assistant

HEATH SCHULTE 

Sr. Director of Cattle Development

ETHAN JAYMES 

*Regional Director of
Backgrounder Operations*

JOSH BROUSSARD 

Sr. Director – Beef Operations

BONNER GARRISON 

Director of Data Strategy

SYDNEY REESE 

*Director of R&D, Performance
& Sustainability*

BAILEY LEAK 

Supply Chain Manager

CARL PELSTER 

*Regional Director of
Backgrounder Operations*

MISTY MATTOX 

Inventory Manager

BRYN HARDY

Mind the Gap Analyst

ORLANDO SALAZAR

International Sales

RILEY WALTERS

*Operations Manager of
Beef Program*

PAIGE BRASWELL 

Accounting Manager

JASON SCHIMMELS

Director of Beef Program Sales

JOSE VARGAS

Director of Culinary Operations

ETHAN BEGLEY

*Director of Retail &
Online Fulfillment*

SPENCER DAVIS

*Asst. Director of Retail &
Online Fulfillment*

ABBEY LANGAN

*Manager of Retail &
Online Fulfillment*

NATE GRAY

Farm Manager

WILL SCOTT

Facilities Manager

DOUG SLATTERY

Consultant

JEFF CALLAWAY 

Procurement Consultant

WILL DORAN 

Procurement Consultant

CONNIE SMITH

*Network & Information
Consultant*

LEON RUSSELL

*Construction Services
Consultant*

THE FUTURE IS HERE

457 \$C WITH 13 TRAITS IN TOP 5% OF BREED



2 BAR GRID MAKER 3686

REG: 20912858 | DOB: 11/15/2023

Proudly owned with Circle F Farms | Baxley, GA and JB Farms, LLC | Clarksburg, WV

44 RITA N193

REG: 21345128 | DOB: 09/08/2025

**THE \$450,000
VALUE
PROGENY
OUT OF 3686**

**463 \$C WITH
7 TRAITS
IN TOP 1% OF
BREED**

*Proudly owned with
M Farm & Ranch | Waco, TX
Circle F Farms | Baxley, GA
JB Farms, LLC | Clarksburg, WV*



Look for the first bulls to sell Fall 2026.



Tonight's Menu

WITH

44 FARMS
SINCE 1909



CLASSIC CUTS COLLECTION

Get ready for the ultimate steak showdown with our 44 Farms Classic Cuts Collection! Featuring six mouthwatering cuts, including two juicy 16 oz Boneless Ribeyes, two succulent 8 oz Filet Mignons, two bold 14 oz New York Strips and our signature 4.6 oz Black Pepper Infused Salt, this bundle is a carnivore's dream come true. *USDA Choice \$200 or USDA Prime \$275 with free shipping.*



THE QUARTER BEEF BUNDLE

You asked, we delivered... Introducing the 44 Farms Quarter Beef Bundle! We've carefully curated 80-85 lbs of the finest USDA Choice Angus beef, featuring an unbeatable selection of premium cuts from across the carcass. Each item is individually vacuum-sealed for your convenience — perfect for stocking your freezer with the best of 44 Farms. Get yours today! *\$1,275 with free shipping.*



BONE-IN STEAK PACK

For a truly satisfying dining experience, indulge in our Bone-In Steak Pack, featuring two 24 oz Bone-In Ribeyes and two 18 oz Bone-In New York Strips. This pack promises rich flavor, juicy tenderness and robust marbling to delight your taste buds with every bite. *\$155 with free shipping.*



USDA PRIME BRISKET (13 lbs)

44 Farms is proud to bring you the same legendary Brisket requested by renowned pitmasters throughout the Lone Star State. This highly marbled uncooked USDA Prime Brisket will surely bring on the bragging rights for any backyard barbecue. *\$160 with free shipping.*

For a full list of products, visit 44Steaks.com or stop by our Retail Center at 1509 South Highway 36, Cameron, TX 76520.



POISED TO LEAD THE NEXT GENERATION

**OUR FEMALES ARE BACKED BY YEARS OF
INTENSE SELECTION PRESSURE & GENERATIONS
OF RELEVANT GENETICS.**



REGISTERED FEMALES

44 GRID MAKER 3686



2 BAR GRID MAKER 3686 /
THE \$520,000 RECORD-SELLING
GENOMIC LEADING DONOR IN THE
44 FARMS, CIRCLE F FARMS AND
JB FARMS DONOR PROGRAMS
AND DAM OF LOTS 1 AND 1A.



44 RITA N193 /
THE \$450,000 VALUED
SELECTION OF M FARM
AND RANCH AS THE TOP-
SELLING FEMALE OF THE
2025 44 FARMS DECEMBER
LIVEONLINE™ SALE.



JB RITA 547 /
THE \$150,000 SELECTION
OF THE 808 RANCH IN
THE JB FARMS 2026
SPRING LIVEONLINE™
SALE AND MATERNAL
SISTER TO LOTS 1 AND 1A.

- Grid Maker 3686, the donor dam of Lots 1 and 1A was the top-selling female in the breed in 2024 and anchors the 44 Farms, JB Farms and Circle F Farms joint donor programs is the ONLY non-parent female with her combination of CED, BW, WW, YW, SC, HP, PAP, CW, Marbling, RE, \$M, \$W, \$B and \$C.
- Grid Maker 3686, the donor dam of Lots 1 and 1A combines the proven second-generation FB Genetics donor, Athlete 996 and the sensational carcass, \$B, \$C and genomic leader of the FB Genetics herd sire roster, Grid Maker L1071. The dam of Grid Maker 3686 is a direct daughter of the top-producing now-deceased cornerstone donor in the FB program, Prophet 0323 sired by the outcross sire, Rito Athlete.
- Full sisters to the donor dam of Lots 1 and 1A headlined the 2024 Southern Synergy Sale and include: Grid Maker 17150, the \$117,500

- top-selling bred heifer selected by Nowatzke Cattle Company, Maple Lane Angus and Pollard Farms and current Number 2 \$C proven dam in the breed; and Grid Maker 17155, the \$72,500 second high-selling bred heifer selected by Gabriel Ranch and Byrd Cattle Company.
- Full and maternal sisters and heifer pregnancies to Lots 1 and 1A include: Rita N193, the \$450,000 valued half interest selection of M Farm and Ranch; Rita 547, the \$150,000 top-selling and lead-off female of the 2026 JB Farms Spring LiveOnline™ Sale selected by The 808 Ranch; the \$125,000 selection of Grimmus Cattle Company and M Farm and Ranch; the \$115,000 selection of Vause Angus; the \$110,000 selection of Hopson Angus; the \$70,000 selection of ST Genetics; the \$70,000 selection of Smith Valley Angus; the \$37,000 selection of Gobbell G3 Farms.

44 RITA 5622



44 RITA 5622 / LOT 1

FEATURING AN EXCITING DAUGHTER AND HEIFER PREGNANCY FROM THE \$520,000 HEADLINER OF 44 FARMS, CIRCLE F FARMS AND JB FARMS JOINT DONOR PROGRAMS, GRID MAKER 3686 SIRED BY THE PROVEN MULTI-TRAIT LEADER, INFERNO AND THE PROVEN MULTI-TRAIT MARBLING LEADER, PREEMINENT.

1

44 Rita 5622

BIRTH DATE: 11-01-2025 COW +*21401614 TATTOO: 5622

*#GB Fireball 672 *G A R Sure Fire 6404
 *Inferno 2G44 of GAR *GB Anticipation 432
 20465669 *Lassie Erica 0167 of GAR *#Deer Valley Growth Fund Lassie Erica 4126 of GAR
 *G A R Grid Maker L1071 *#GB Fireball 672
 *2 Bar Grid Maker 3686 *Chair Rock Sure Fire 6095
 20912858 *FB 323 Athlete 996 *FF Rito Athlete
 *Goode K263 Prophet 0323

CED	BW	WW	YW	RADG	DMI	YH	SC	HP	CEM	MILK	TEAT	UDDR	FL
+15	-7	+71	+137	+35	+118	+4	+1.11	+15.8	+14	+37	+17	+19	+1.03
MW	MH	DOC	CLAW	ANGLE	PAP	HS	CW	MARB	RE	FAT			
+40	+1	+26	+59	+49	+1.41	+20	+73	+2.25	+1.34	+0.16			
\$AxH +339	\$AxJ +303	\$M +87	\$W +88	\$F +134	\$G +140	\$B +274	\$C +442						

CED	BW	WW	YW	DMI	YH	SC	DOC	HP	CEM	MILK	MW	MH	CW	MB	REA	FAT	TND	CLAW	ANGL	HS	PAP
37	50	58	11	62	42	19	6	5	57	8	74	59	10	1	1	33	97	81	57	13	65

NON-PARENT FEMALES

Top 1% \$AxH	Top 1% \$G	Top 4% \$F	Top 5% CEM	Top 15% HS
Top 1% \$AxJ	Top 1% Marb	Top 4% HPreg	Top 10% \$M	Top 20% CWT
Top 1% \$B	Top 2% CED	Top 4% RADG	Top 10% \$W	Top 20% Doc
Top 1% \$C	Top 3% Milk	Top 4% REA	Top 15% BW	Top 25% YW

1A

44 Grid Maker 3686 Heifer Pregnancy

DUE DATE: 09-13-2026

*#B&B Preeminent *G A R Transcendent *#G A R Momentum
 20500166 *B&B 0F04 of 6528XFireball *G A R Prophet 2685
 *G A R Grid Maker L1071 *#GB Fireball 672
 *2 Bar Grid Maker 3686 *Chair Rock Sure Fire 6095
 20912858 *FB 323 Athlete 996 *FF Rito Athlete
 *Goode K263 Prophet 0323

Projected EPDs

CED	BW	WW	YW	RADG	DMI	YH	SC	HP	CEM	MILK	TEAT	UDDR	FL
+11	+1.6	+84	+150	+32	+1.86	+7	+69	+11.9	+14	+26	+54	+53	+99
MW	MH	DOC	CLAW	ANGLE	PAP	HS	CW	MARB	RE	FAT			
+85	+8	+23	+56	+48	+49	-.04	+85	+2.53	+1.39	+0.22			
\$AxH +354	\$AxJ +331	\$M +65	\$W +81	\$F +138	\$G +154	\$B +292	\$C +443						

DONOR - PROVEN FEMALES

Top 1% \$AxH	Top 1% \$G	Top 2% REA	Top 5% RADG	Top 15% PAP
Top 1% \$AxJ	Top 1% HS	Top 3% \$W	Top 10% CEM	Top 20% Doc
Top 1% \$B	Top 1% Marb	Top 3% Milk	Top 10% YW	Top 20% WW
Top 1% \$C	Top 2% \$F	Top 4% CWT	Top 15% CED	Top 25% \$M

- Rita 5622 is presently the ONLY non-parent female in the breed with her blend of CED, BW, WW, YW, SC, HP, Marbling, RE, \$M, \$W, \$B and \$C.
- Rita 5622 is an exciting calving-ease, growth, PAP, HS, CW, Marbling, RE, \$W, \$B and \$C combination lead-off female produced by the \$520,000 prolific genomic leader of the JB Farms, Circle F Farms and 44 Farms joint embryo programs, Grid Maker 3686 sired by the proven multi-trait feature, Inferno.

44 RENEGADE 9629



FB 996 RENEGADE 9629 / LOT 2

2

FB 996 Renegade 9629 [AMF-CAF-D2F-DDF-MIF-NHF-OHF-OSF-RDF]

BIRTH DATE: 07-07-2023 COW +*20726283 TATTOO: 9629

*H P C A Renegade 20004431
 #*G A R Home Town
 *CAM Sure Fire A749
 #*G A R Ashland
 **Chair Rock Sure Fire 6095
 #*G A R Sure Fire
 *G A R Prophet A5040

*FB 323 Athlete 996 20218432
 **FF Rito Athlete
 *Goode K263 Prophet 0323
 #*Jindra Acclaim
 **FF Rita 5B63 of 356H 3S10
 *G A R Prophet K263
 *Goode Sunrise 7805

CED	BW	WW	YW	RADG	DMI	YH	SC	HP	CEM	MILK	TEAT	UDDR	FL
+5	+2.1	+85	+155	+32	+2.13	+1.3	+1.12	+12.2	+9	+23	+59	+70	+1.02
MW	MH	DOC	CLAW	ANGLE	PAP	HS	CW	MARB	RE	FAT			
+106	+1.1	+14	+52	+43	+2.05	+0.05	+82	+2.35	+1.55	+0.06			

\$AxH	+290	\$AxJ	+310	\$M	+59	\$W	+75	\$F	+130	\$G	+148	\$B	+279	\$C	+421
-------	------	-------	------	-----	-----	-----	-----	-----	------	-----	------	-----	------	-----	------

CED	BW	WW	YW	DM	YH	SC	DOC	HP	CEM	MILK	MW	MH	CW	MB	REA	FAT	TND	CLAW	ANGL	HS	PAP
64	62	29	11	95	13	25	79	41	48	78	20	19	8	1	1	42	48	57	27	2	71

PROVEN FEMALES

Top 1% \$AxH	Top 1% \$G	Top 10% \$F	Top 15% WW
Top 1% \$AxJ	Top 1% Marb	Top 10% CWT	Top 20% UDDER
Top 1% \$B	Top 1% REA	Top 10% YW	
Top 1% \$C	Top 3% HS	Top 15% RADG	



OGEECHEE FB GRID MAKER 17150 / THE \$117,500 BREED'S NUMBER 2 \$C PROVEN DAM AND MATERNAL SISTER TO LOT 2 AND FULL SISTER TO THE DAM OF LOTS 1 AND 1A FEATURED IN THE NOWATZKE CATTLE COMPANY AND POLLARD FARMS DONOR PROGRAMS.

- Renegade 9629 comes from the heart of the 44 Farms and FB Genetics donor program and is a growth, HS, CW, Marbling, RE, \$B and \$C daughter of the second-generation FB Genetics donor, Athlete 996 sired by Renegade.
- Athlete 996, the dam of Lot 2 is a direct daughter of the now-deceased cornerstone genomic leader of the FB Genetics program, Prophet 0323 sired by the proven FB sire, Rito Athlete. The dam of Lot 2 records ultrasound ratios IMF 16@124 and REA 16@106. Maternal sisters to Lot

- 2 include: Grid Maker 3686, the \$520,000 donor dam of Lots 1 and 1A in the 44 Farms, Circle F Farms and JB Farms donor programs; Grid Maker 17150, the \$117,500 top-selling bred heifer selected by Nowatzke Cattle Company, Maple Lane Angus and Pollard Farms and current Number 2 \$C proven dam in the breed; and Grid Maker 17155, the \$72,500 second high-selling bred heifer selected by Gabriel Ranch and Byrd Cattle Company.
- Due 1/7/27 to Byrd Bullsseye 1186-A100.

44 4035 DAUGHTERS



44 RITA N348 /
LOT 3A

3A

44 Rita N348

BIRTH DATE: 12-12-2025 COW +*21461731 TATTOO: N348

+*FF Rito Ambitious 20437882
+*RMRK Rita 0237
+*Kenny Rogers
+*44 Rita 4035 20858644
+*Lylester Discovery 662
+*SE0 Ultra Provider
+*G A R Momentum K836
+*Chair Rock Progress 3023
+*Thomas Edison 6764
+*RMRK Rita 8232
#*SydGen KCF Gavel 8361
#*Foxhovens Kintry Annie 532
#*GB Fireball 672
+*Blackstone Discovery 6428

CED	BW	WW	YW	RADG	DMI	YH	SC	HP	CEM	MILK	TEAT	UDDR	FL								
+7	+1.8	+85	+153	+3.4	+1.07	+4	+7.3	+11.4	+10	+20	+51	+62	+98								
MW	MH	DOC	CLAW	ANGLE	PAP	HS	CW	MARB	RE	FAT											
+118	+5	+20	+37	+3.8	+2.59	+3.4	+77	+1.56	+1.22	-.080											
\$AxH+289	\$AxJ	+256	\$M	+55	\$W	+71	\$F	+134	\$G	+111	\$B	+246	\$C	+374							
CED	BW	WW	YW	DMI	YH	SC	DOC	HP	CEM	MILK	MW	MH	CW	MB	REA	FAT	TND	CLAW	ANGL	HS	PAP
56	45	16	5	72	67	8	26	43	27	71	4	39	1	6	1	1	48	8	8	23	53

NON-PARENT FEMALES

Top 1% \$AxH	Top 3% \$AxJ	Top 4% \$F	Top 10% RADG	Top 15% Angle
Top 1% Fat	Top 3% \$C	Top 10% Claw	Top 10% REA	Top 15% CWT
Top 2% \$B	Top 3% \$G	Top 10% Marb	Top 10% YW	Top 15% WW

Owned with M Farm and Ranch Waco, TX

- Featuring two daughters of the \$100,000 headliner of the 44 Farms and M Farm and Ranch joint donor programs, Rita 4035 sired by the \$235,000 record-selling multi-trait leader, Ambitious and the multi-trait Breakthrough son, Boost.
- Rita 4035, the donor dam of Lots 3A and 3B was produced by the

3B

44 Rita N256

BIRTH DATE: 11-01-2025 COW +*21399132 TATTOO: N256

+*2 Bar Boost 2617 20537960
+*2 Bar Fireball 0635
+*Kenny Rogers
+*Lylester Discovery 662
+*Beal Breakthrough
+*G A R Prophet K263
+*H P C A Sure Fire S6
+*GB Fireball 672
+*2 Bar Acclaim 8621
#*SydGen KCF Gavel 8361
#*Foxhovens Kintry Annie 532
#*GB Fireball 672
+*Blackstone Discovery 6428

CED	BW	WW	YW	RADG	DMI	YH	SC	HP	CEM	MILK	TEAT	UDDR	FL								
+15	-1.3	+83	+151	+3.4	+1.42	+1.0	+1.14	+9.3	+17	+24	+4.6	+58	+1.01								
MW	MH	DOC	CLAW	ANGLE	PAP	HS	CW	MARB	RE	FAT											
+127	+1.2	+24	+33	+4.1	+9.0	+3.1	+78	+1.45	+1.50	-.013											
\$AxH+264	\$AxJ	+274	\$M	+51	\$W	+77	\$F	+138	\$G	+105	\$B	+243	\$C	+366							
CED	BW	WW	YW	DMI	YH	SC	DOC	HP	CEM	MILK	MW	MH	CW	MB	REA	FAT	TND	CLAW	ANGL	HS	PAP
6	22	6	3	84	8	29	35	70	10	64	3	4	1	6	1	7	73	1	8	28	32

NON-PARENT FEMALES

Top 1% \$AxJ	Top 2% CED	Top 4% Claw	Top 10% Marb	Top 20% Angle
Top 1% CEM	Top 3% \$AxH	Top 5% \$C	Top 10% YW	Top 20% Fat
Top 1% REA	Top 3% \$F	Top 5% RADG	Top 15% CWT	Top 25% \$W
Top 2% \$B	Top 4% \$G	Top 10% BW	Top 15% WW	Top 25% HS

Owned with M Farm and Ranch Waco, TX

- \$35,000 valued Discovery 662 and sired by the proven outcross leader ST Genetics roster member, Kenny Rogers.
- Maternal sisters to the dam of Lots 3A and 3B include: the female selling as Lot 4; and Rita N846, the \$67,500 lead-off female of the 2025 44 Farms December LiveOnline™ Sale selling to The 808 Ranch.



44 RITA N256 /
LOT 3B

44 RITA 4266



44 RITA 4266 /
LOT 4

4

44 Rita 4266 [AMF-CAF-D2F-DDF-MIF-NHF-OHF-OSF-RDF]

BIRTH DATE: 09-09-2024 COW +*21042188 TATTOO: 4266
 *Connealy Clarity #Cherry Creek Land Grant
 +*DE-SU Certainty E349 *Breshie of Conanga 6988
 20557725 +*DE-SU C174 #*G A R Inertia
 +*E W A 3128 of 9067 Weigh Up
 #*GB Fireball 672 +*G A R Sure Fire 6404
 +*Lylester Discovery 662 *GB Anticipation 432
 19887063 +*Blackstone Discovery 6428 #*V A R Discovery 2240
 +G A R Big Eye 1770

CED	BW	WW	YW	RADG	DMI	YH	SC	HP	CEM	MILK	TEAT	UDDR	FL
+8	+1.6	+93	+165	+0.34	+1.76	+1.0	+0.99	+10.6	+12	+31	+4.4	+4.5	+1.00
MW	MH	DOC	CLAW	ANGLE	PAP	HS	CW	MARB	RE	FAT			
+106	+9	+20	+4.5	+4.8	+2.91	+1.5	+93	+1.57	+1.47	-0.21			
\$AxH +283	\$AxJ +296	\$M +63	\$W +97	\$F +148	\$G +111	\$B +259	\$C +399						

CED	BW	WW	YW	DMI	YH	SC	DOC	HP	CEM	MILK	MW	MH	CW	MB	REA	FAT	TND	CLAW	ANGL	HS	PAP
52	73	9	2	97	16	21	25	60	45	51	10	19	1	2	1	34	65	18	25	6	84

NON-PARENT FEMALES

Top 1% \$AxH	Top 1% \$F	Top 3% \$W	Top 10% HS	Top 25% CEM
Top 1% \$AxJ	Top 2% CWT	Top 3% YW	Top 10% Marb	
Top 1% \$B	Top 2% REA	Top 4% WW	Top 15% Fat	
Top 1% \$C	Top 3% \$G	Top 5% RADG	Top 20% Milk	

- Rita 4266 is a sensational growth, Marbling, RE, \$W, \$B and \$C combination prospect produced by the \$35,000 valued Discovery 662 and sired by the proven multi-trait feature of the De Su Angus program, Certainty E349.
- Discovery 662, the donor dam of Lot 4 was the half interest selection of Palmer Angus in the 2023 44 Farms May LiveOnline™ Sale and blends the multi-trait leader, Fireball with a maternal sister to the \$130,000 proven Marbling leader, Momentum by the longtime leader of the 44 Farms program, Discovery. Full and maternal siblings to the dam of Lot 4 include: Rita 1200, the \$11,000 selection of Soaring Eagle Farms in the 2022 Lylester Ranch LiveOnline™ Sale; Fireball 818, the \$9,500 high-selling bull of the first Lylester Ranch Bull sale selling to Zutavern Ranch.
- Maternal sisters to Lot 4 include: Rita 4035, the \$100,000 donor dam of Lots 3A and 3B featured in the 44 Farms and M Farm and Ranch joint embryo programs; and Rita N846, the \$67,500 lead-off female of the 2025 44 Farms December LiveOnline™ Sale selling to The 808 Ranch.
- Due 9/24/26 to 44 Faithful 2764.



LYLESTER DISCOVERY 662 / THE POWERFUL AND PROVEN DONOR DAM OF LOT 4.



44 RITA N846 / THE \$67,500 MATERNAL SISTER TO LOT 4 SELECTED BY THE 808 RANCH AS THE LEAD-OFF FEMALE OF THE 2025 44 FARMS DECEMBER LIVEONLINE™ SALE.

44 RITA 2578 GENETICS



44 RITA 5590 / LOT 5A

5A

44 Rita 5590

BIRTH DATE: 11-01-2025 COW **21401555 TATTOO: 5590

*FHCC Majority 1551
20119568

*Connealy Clarity
**Woodland Blackcap Lady 84

*Cherry Creek Land Grant
*Breshie of Conanga 6988
**G A R Sure Fire
#Basin Blackcap Lady 0172

**Beal Breakthrough
**Vintage Rita 2578
20434819

*G A R Prophet K263
*H P C A Sure Fire S6
**V A R Discovery 2240
*V A R Rita 3160

CED	BW	WW	YW	RADG	DMI	YH	SC	HP	CEM	MILK	TEAT	UDDR	FL
+9	+3	+87	+148	+28	+1.60	+1.1	+1.07	+11.5	+6	+39	+89	+73	+1.02
MW	MH	DOC	CLAW	ANGLE	PAP	HS	CW	MARB	RE	FAT			
+94	+1.0	+32	+46	+4.0	+1.62	-.05	+92	+1.80	+1.23	-.016			
\$AxH +276	\$AxJ +286	\$M +80	\$W +103	\$F +141	\$G +119	\$B +260	\$C +417						

CED	BW	WW	YW	DMI	YH	SC	DOC	HP	CEM	MILK	MW	MH	CW	MB	REA	FAT	TND	CLAW	ANGL	HS	PAP
45	46	22	20	79	22	63	3	47	82	7	41	25	4	2	1	10	75	4	5	1	46

NON-PARENT FEMALES

Top 1% \$AxJ	Top 1% \$W	Top 2% CWT	Top 4% TEAT	Top 15% YW
Top 1% \$B	Top 1% HS	Top 2% Milk	Top 10% REA	Top 20% \$M
Top 1% \$C	Top 2% \$AxH	Top 3% Doc	Top 10% WW	Top 20% Angle
Top 1% \$G	Top 2% \$F	Top 3% Marb	Top 15% UDDER	Top 20% Fat

5B

44 Rita 2578 Heifer Pregnancy

DUE DATE: 12-13-2026

*Wilks Avid 4864
21205732

*FF Rito Ambitious
*DBA Rita 1034

*Beal Breakthrough
**Vintage Rita 2578
20434819

*Vintage Rita 5008

*SEO Ultra Provider
*RMRK Rita 0237
*G A R Home Town
**Pine View Rita E093

*G A R Prophet K263
*H P C A Sure Fire S6
**V A R Discovery 2240
*V A R Rita 3160

Projected EPDs

CED	BW	WW	YW	RADG	DMI	YH	SC	HP	CEM	MILK	TEAT	UDDR	FL
+5	+2.7	+100	+169	+32	+1.64	+1	+9	+10.1	+8	+24	+63	+63	+1.04
MW	MH	DOC	CLAW	ANGLE	PAP	HS	CW	MARB	RE	FAT			
+98	+9	+31	+59	+45	+2.44	+14	+100	+1.9	+1.14	+.02			
\$AxH +303	\$AxJ +300	\$M +77	\$W +96	\$F +157	\$G +120	\$B +278	\$C +437						

DONOR - PROVEN FEMALES

Top 1% \$AxJ	Top 1% \$W	Top 2% \$AxH	Top 5% REA	Top 20% TEAT
Top 1% \$B	Top 1% CWT	Top 2% \$G	Top 10% HS	Top 25% SC
Top 1% \$C	Top 1% WW	Top 2% Marb	Top 10% RADG	
Top 1% \$F	Top 1% YW	Top 3% Doc	Top 20% Angle	

- Featuring a daughter and a heifer pregnancy from the featured Rita in the 44 Farms donor program, Rita 2578 sired by the proven multi-trait carcass, \$M, \$B and \$C sire, Majority 1551 and the record-selling Grimmus Cattle Company headliner, Avid.
- Rita 2578, the donor dam of Lots 5A and 5B is a sensational daughter of the \$240,000 valued headliner of the AAA Farms and Vintage Angus Ranch joint embryo programs, Rita 5008 sired by the proven multi-trait ST Genetics leader, Breakthrough.
- Full and maternal siblings to the dam of Lots 5A and 5B include: Rita 8204, the \$160,000 valued half interest selection of Linz Heritage Angus and Herbster Angus in the 2018 Vintage Sale; Rita 0227, the \$120,000 third high-selling open heifer of the 2020 Vintage Angus Sale selected by Optum Angus and EZ Angus Ranch; Double Play, the featured 44 Farms and Alta Genetics roster member; Rita 2536, the \$70,000 featured

bred heifer of the record-setting first AAA Farm sale selected by Gobbell G3 Farms; Rita 3013, the \$50,000 selection of Riverbend Ranch in that offering; a \$35,000 heifer pregnancy selected by Circle G Ranches in the 2022 Gobbell G3 sale; Rita 2511 and Rita 2501 both selected by Vintage Angus Ranch in the 2023 Gobbell G3 Sale for \$35,000 each; Rita 2515, the \$30,000 selection of Hillhouse Angus in the first AAA Farms sale; Rita 9195, the \$30,000 second high-selling bred heifer of the 2020 Vintage Angus Sale selected by Four Sons Farm; Rita 2529, the \$29,000 second high-selling open heifer of the 2022 Best of the Bluegrass selected by Optum Angus; two heifer pregnancies selected by Spruce Mountain Ranch and Express Ranches in the record-setting 2022 Bases Loaded Sale for an average of \$25,000; and a \$17,500 heifer pregnancy selling to KL3 Farms in the first AAA Farms sale.

44 MARBLING PROSPECTS



44 FB GRID MAKER 5476 /
LOT 6



44 FB RITA 5497 /
LOT 7

6

44 FB Grid Maker 5476

BIRTH DATE: 08-17-2025 COW +*21330020 TATTOO: 5476

+*G A R Samuel 20478231
 +*Beal Breakthrough
 +*FB 8917 Ultra 228
 +*G A R Prophet K263
 +*H P C A Sure Fire S6
 +*SEO Ultra Provider
 +*HR Ramesses 8917 of 5047

+*FB 323 Grid Maker 16136 20733044
 +*G A R Grid Maker L1071
 +*Goode K263 Prophet 0323
 #*GB Fireball 672
 +*Chair Rock Sure Fire 6095
 +*G A R Prophet K263
 +*Goode Sunrise 7805

CED	BW	WW	YW	RADG	DMI	YH	SC	HP	CEM	MILK	TEAT	UDDR	FL							
+11	+4	+88	+156	+33	+1.77	+7	-.35	+8.5	+6	+36	+4.3	+44	+95							
MW	MH	DOC	CLAW	ANGLE	PAP	HS	CW	MARB	RE	FAT										
+73	+8	+16	+50	+41	+79	-12	+90	+2.19	+1.39	+0.19										
\$AxH	+337	\$AxJ	+317	\$M	+62	\$W	+104	\$F	+143	\$G	+137	\$B	+280	\$C	+425					
88	87	6	3	94	18	98	68	60	91	9	31	16	1	5	67	29	48	20	1	43

NON-PARENT FEMALES

Top 1% \$AxH	Top 1% \$G	Top 2% \$W	Top 10% RADG	Top 20% Angle
Top 1% \$AxJ	Top 1% HS	Top 3% CWT	Top 10% WW	
Top 1% \$B	Top 1% Marb	Top 3% REA	Top 10% YW	
Top 1% \$C	Top 2% \$F	Top 4% Milk	Top 15% CED	

• Grid Maker 5476 is an exciting calving-ease, HS, CW, Marbling, RE, \$W, \$B and \$C combination prospect produced by the outstanding second-generation FB Genetics donor, Grid Maker 16136 sired by the sensational multi-trait leader, Samuel.
 • Grid Maker 16136, the dam of Lot 6 is a direct daughter of the powerful now-deceased genomic leader of the FB Genetics program, Prophet 0323 sired by the genomic leader, Grid Maker. Maternal sisters to the dam of Lot 6 include: Athlete 996, the dam of the \$520,000 44 Farms, Circle F Farms and JB Farms donor, Grid Maker 3686 and the breed's Number 2 proven dam for \$C in the Nowatzke Cattle Company, Maple Lane Angus and Pollard Farms donor program, Grid Maker 17150.

7

44 FB Rita 5497

BIRTH DATE: 09-01-2025 COW +*21337999 TATTOO: 5497

+*G A R Grid Maker L1071 20730359
 #*GB Fireball 672
 +*Chair Rock Sure Fire 6095
 +*G A R Sure Fire 6404
 *GB Anticipation 432
 #*G A R Sure Fire
 +*Chair Rock Progress 3005

+*FB 61 Breakthrough 9985 20732934
 +*Beal Breakthrough
 +*FB 8108 Opus 61
 +*G A R Prophet K263
 +*H P C A Sure Fire S6
 *Gardens Opus
 +*K BAR Acclaim 8108

CED	BW	WW	YW	RADG	DMI	YH	SC	HP	CEM	MILK	TEAT	UDDR	FL								
+11	+9	+80	+150	+36	+1.42	+6	+1.19	+8.6	+15	+34	+6.1	+44	+96								
MW	MH	DOC	CLAW	ANGLE	PAP	HS	CW	MARB	RE	FAT											
+88	+8	+26	+55	+51	+1.54	+10	+87	+2.21	+1.10	+0.20											
\$AxH	+334	\$AxJ	+299	\$M	+54	\$W	+87	\$F	+146	\$G	+134	\$B	+281	\$C	+418						
56	65	40	10	42	61	34	40	89	14	26	63	64	7	1	7	42	65	54	62	5	63

NON-PARENT FEMALES

Top 1% \$AxH	Top 1% \$F	Top 3% CEM	Top 10% CED	Top 20% Doc
Top 1% \$AxJ	Top 1% \$G	Top 4% CWT	Top 10% Milk	Top 20% WW
Top 1% \$B	Top 1% Marb	Top 5% HS	Top 15% REA	
Top 1% \$C	Top 2% RADG	Top 10% \$W	Top 15% YW	

• Rita 5497 is an outstanding calving-ease, growth, HS, CW, Marbling, RE, \$B and \$C prospect produced by the third-generation FB Genetics donor, Breakthrough 9985 sired by the proven genomic leader of the FB herd sire roster, Grid Maker.
 • Breakthrough 9985, the dam of Lot 7 blends the multi-trait ST Genetics leader, Breakthrough with a direct daughter of the powerful and proven Riverbend Ranch and FB Genetics donor, Acclaim 8108 by the proven Marbling leader, Opus.

44 BLACKBIRD N074



44 BLACKBIRD N074 / LOT 8

8

44 Blackbird N074 [AMF-CAF-D2F-DDF-M1F-NHF-OHF-OSF-RDF]

BIRTH DATE: 02-01-2025 COW +*21214774 TATTOO: N074

+*44 Faithful 2764
20577094

+*HPCA Veracious

+*DCF Ruby of Tiffany 6799

#*Mill Brae Identified 4031

+*H P C A Sunrise A246

#*V A R Generation 2100
DCF Ruby of Tiffany 7592

#*GB Fireball 672

+*Lylester Blackbird 657
19887073

+*Vintage Blackbird 7184

+*G A R Sure Fire 6404

*GB Anticipation 432

#*V A R Discovery 2240

+*Sandpoint Blackbird 8809

CED	BW	WW	YW	RADG	DMI	YH	SC	HP	CEM	MILK	TEAT	UDDR	FL
+13	+2	+83	+154	+35	+1.66	+7	+78	+10.5	+16	+25	+51	+45	+1.05
MW	MH	DOC	CLAW	ANGLE	PAP	HS	CW	MARB	RE	FAT			
+106	+8	+31	+49	+48	+13	+28	+81	+1.76	+1.09	+0.27			

\$AxH	+280	\$AxJ	+253	\$M	+63	\$W	+79	\$F	+137	\$G	+112	\$B	+249	\$C	+386						
CED	BW	WW	YW	DMI	YH	SC	HP	CEM	MILK	MW	MH	CW	MB	REA	FAT	TND	CLAW	ANGL	HS	PAP	
21	25	23	2	93	52	18	2	78	5	38	23	45	2	2	11	58	92	59	58	26	40

NON-PARENT FEMALES

Top 1% CEM	Top 2% \$G	Top 4% Doc	Top 10% YW	Top 20% HS
Top 2% \$AxH	Top 3% \$AxJ	Top 4% RADG	Top 15% REA	Top 25% BW
Top 2% \$B	Top 3% \$F	Top 10% CED	Top 15% WW	
Top 2% \$C	Top 3% Marb	Top 10% CWT	Top 20% \$W	



LYLESTER BLACKBIRD 657 / THE POWERFUL AND PROVEN DONOR DAM OF LOT 8.

- Blackbird N074 is a calving-ease, growth, PAP, Marbling, RE, \$B and \$C prospect produced by the \$42,000 44 Farms power donor, Blackbird 657 sired by the \$180,000 feature of the 44 Farms, Krebs Ranch and Thomas Ranch programs, Faithful.
- Blackbird 657, the dam of Lot 8 blends the proven carcass sire, Fireball with a direct daughter of the \$10 million producer in the Vintage Angus and Herbster Angus programs, Blackbird 8809 by the legendary female sire, Discovery. The dam of Lot 8 posts a BR 2@85, a WR 2@100 and a YR 1@100 while showing ultrasound ratios IMF 13@110 and REA 13@99.
- Progeny from this proven producer include; Blackbird L928,

the \$20,000 second-generation 44 Farms donor and dam of Lot 9; Major Gaines L932 the \$80,000 second high-selling bull of the record-setting 2025 44 Farms Spring Bull Sale selected by Grimmus Cattle Company and M Farm and Ranch; Noble Service L930, the \$30,000 selection of Tanner Farms in that offering; Blackbird 2473, the \$12,500 selection of Dunn Farm offering; Blackbird 2473, the \$12,500 selection of Dunn Farm offering; Blackbird 2473, the \$12,500 selection of Dunn Farm offering; Blackbird M044, the \$9,500 selection of 5T Ranch in the 2024 44 Farms December LiveOnline™ Sale; and Blackbird L921, selected by Castillo Ranch in the 2024 44 Farms May LiveOnline™ Sale.

44 BLACKBIRD 5611



44 BLACKBIRD 5611 / LOT 9

9

44 Blackbird 5611

BIRTH DATE: 11-01-2025 COW +*21400219 TATTOO: 5611

+*44 Faithful 2764 20577094
 +*HPCA Veracious
 +*DCF Ruby of Tiffany 6799
 #*Mill Brae Identified 4031
 +*H P C A Sunrise A246
 #*V A R Generation 2100
 DCF Ruby of Tiffany 7592

+*44 Blackbird L928 20878989
 +*44 Victory
 +*Lylester Blackbird 657
 #*DB Iconic G95
 +*44 Lucy 334G
 #*GB Fireball 672
 +*Vintage Blackbird 7184

CED	BW	WW	YW	RADG	DMI	YH	SC	HP	CEM	MILK	TEAT	UDDR	FL
+3	+4.3	+101	+181	+37	+2.07	+1.5	+71	+10.6	+10	+22	+28	+46	+1.04
MW	MH	DOC	CLAW	ANGLE	PAP	HS	CW	MARB	RE	FAT			
+151	+1.5	+27	+48	+50	+1.56	+40	+99	+1.88	+89	+0.30			

\$AxH	\$225	\$AxJ	\$240	\$M	\$46	\$W	\$78	\$F	\$151	\$G	\$115	\$B	\$267	\$C	\$392
97	99	1	1	99	1	47	16	56	34	81	1	2	1	1	1

NON-PARENT FEMALES

Top 1% \$B	Top 1% CWT	Top 1% YW	Top 5% \$AxJ	Top 25% \$W
Top 1% \$C	Top 1% RADG	Top 2% \$G	Top 10% \$AxH	
Top 1% \$F	Top 1% WW	Top 2% Marb	Top 15% Doc	

BLACKBIRD 5611 IS A POWER GROWTH, CW, MARBLING, \$B AND \$C DAUGHTER OF THE \$20,000 SECOND-GENERATION 44 FARMS BLACKBIRD, BLACKBIRD L928 Sired by the \$180,000 HEADLINER OF THE 44 FARMS, KREBS RANCH AND THOMAS RANCH HERD SIRE ROSTERS, FAITHFUL 2764.

• Blackbird L928, the dam of Lot 9 is a direct daughter of the powerful and proven 44 Farms donor, Blackbird 657. Full and maternal siblings to the dam of Lot 9 include: the female selling as Lot 8; Major Gaines L932 the \$80,000 second high-selling bull of the record-setting 2025 44 Farms Spring Bull Sale selected by Grimmus Cattle Company and M Farms and Ranch; Noble Service L930, the \$30,000

selection of Tanner Farms in that offering; Blackbird 2473, the \$12,500 selection of Dunn Four Ranch in the 2023 44 Farms September LiveOnline™ Sale; Blackbird M044, the \$9,500 selection of 5T Ranch in the 2024 44 Farms December LiveOnline™ Sale; and Blackbird L921, selected by Castillo Ranch in the 2024 44 Farms May LiveOnline™ Sale.

44 LUCY 5455



44 LUCY 5455 / LOT 10

LUCY 5455 IS A LOW-BIRTH, GROWTH, CW, MARBLING, RE, \$W, \$B AND \$C COMBINATION DAUGHTER OF THE THIRD-GENERATION 44 FARMS DONOR, LUCY L904 Sired BY THE \$300,000 MULTI-TRAIT 44 FARMS, CIRCLE F FARMS AND BYRD CATTLE COMPANY HEADLINER, BULLSEYE.

10

44 Lucy 5455

BIRTH DATE: 08-13-2025 COW +*21325848 TATTOO: 5455

+*Beal Breakthrough
 +*BYRD Bullseye 1186-A100
 20620255
 +*Vintage Blackcap 1186
 +*G A R Prophet K263
 +*H P C A Sure Fire S6
 #*GB Fireball 672
 +*Vintage Blackcap 9186

+*44 Lucy L904
 20795547
 +*Poss Deadwood
 +*44 Lucy 4775
 #*Poss Maverick
 +*Poss Ellunamere 399
 #*V A R Discovery 2240
 +Da Es Ro Lucy 11209

CED	BW	WW	YW	RADG	DMI	YH	SC	HP	CEM	MILK	TEAT	UDDR	FL
+9	+4	+86	+154	+31	+1.66	+1.1	+1.13	+11.7	+5	+35	+18	+33	+1.07
MW	MH	DOC	CLAW	ANGLE	PAP	HS	CW	MARB	RE	FAT			
+91	+1.0	+19	+48	+39	+2.10	+43	+87	+1.80	+1.35	-014			
\$AxH +275	\$AxJ +279	\$M +66	\$W +97	\$F +140	\$G +120	\$B +260	\$C +403						

CED	BW	WW	YW	DMI	YH	SC	DOC	HP	CEM	MILK	MW	MH	CW	MB	REA	FAT	TND	CLAW	ANGL	HS	PAP
33	38	23	10	61	12	35	25	32	96	17	55	23	10	3	6	53	30	34	38	25	72

NON-PARENT FEMALES

Top 1% \$AxJ	Top 2% \$AxH	Top 3% REA	Top 10% YW
Top 1% \$B	Top 2% \$F	Top 4% CWT	Top 15% Angle
Top 1% \$C	Top 3% \$W	Top 10% Milk	Top 20% Fat
Top 1% \$G	Top 3% Marb	Top 10% WW	Top 20% RADG

- Lucy L904, the dam of Lot 10 is a direct daughter of the herd sire producing leader of the 44 Farms donor program, Lucy 4775 sired by the record-selling genomic leader, Deadwood.
- Full and maternal siblings to the dam of Lot 10 include: Lucy 0780, the \$140,000 valued headliner of the 44 Farms and AAA Farms joint embryo programs; Lucy 7315, the \$100,000 valued lead-off female of the 2023 44 Farms May LiveOnline™ Sale selected by AAA Farms; Lucy 0242, the high \$C third-generation 44 Farms Lucy; Lucy 6401, the foundation donor in the 44 Farms and Lazy F Cattle Company programs; the \$240,000 valued half interest selection as the top-selling female of the 2018 44 Farms Female Sale, Lucy 7287 selected by Eddie Carr; Faultless, the \$66,000 top-selling bull of the 2020 44 Farms Fall Sale selected by Grimmus Cattle Company; Lucy 7949, the \$65,000 valued and top-selling female of the 44 Farms September 2020 LiveOnline™ Sale selected by Double T Angus; Lucy 9456, the \$64,000 valued half interest selection of Double T Angus in the 2020 44 Farms December LiveOnline™ Sale; Lucy 187H, the \$62,000 valued half interest selection of Vintage Angus Ranch in that offering; Full Power 9594, the \$47,000 third high-selling bull of the 2020 44 Farms Fall Sale selected by MMA LTD; Lucy 4475, the \$22,000 selection of Bar KJ Angus in the 2025 44 Farms December LiveOnline™ Sale; and Lucy 4499, the \$18,000 selection of Edisto Pines Farm in that offering.

44 FOUNDATION FAMILIES



44 LUCY 5181 /
LOT 11



44 RITA 5224 /
LOT 12

11 44 Lucy 5181 [DDF]

BIRTH DATE: 02-17-2025 COW +*21204071 TATTOO: 5181

+*B&B Preeminent 20500166
+*G A R Transcendent
+*B&B OF04 of 6528XFireball
#*G A R Momentum
+*G A R Prophet 2685
#*GB Fireball 672
+*2 Bar Partner 6528

+*44 Lucy 334G 19616463
#SydGen Enhance
+Da Es Ro Lucy 11209
#*SydGen Exceed 3223
SydGen Rita 2618
#*B/R New Day 454
+Daltons Lucy V033

CED	BW	WW	YW	RADG	DMI	YH	SC	HP	CEM	MILK	TEAT	UDDR	FL
+11	+1.3	+84	+153	+34	+1.75	+8	+1.30	+12.2	+13	+20	+35	+52	+97
MW	MH	DOC	CLAW	ANGLE	PAP	HS	CW	MARB	RE	FAT			
+103	+8	+27	+52	+60	+2.88	+48	+77	+2.17	+116	-011			
\$AxH +307	\$AxJ +288	\$M +54	\$W +73	\$F +128	\$G +135	\$B +264	\$C +396						

CED	BW	WW	YW	DMI	YH	SC	DOC	HP	CEM	MILK	MW	MH	CW	MB	REA	FAT	TND	CLAW	ANGL	HS	PAP
52	62	25	14	91	38	8	5	50	33	93	28	40	4	1	1	7	49	67	93	42	86

NON-PARENT FEMALES

Top 1% \$AxH	Top 1% Marb	Top 10% REA	Top 15% CWT	Top 25% SC
Top 1% \$AxJ	Top 2% \$C	Top 10% YW	Top 15% Doc	
Top 1% \$B	Top 5% RADG	Top 15% CED	Top 15% WW	
Top 1% \$G	Top 10% \$F	Top 15% CEM	Top 20% Fat	

- Lucy 5181 is a growth, Marbling, RE, \$B and \$C sister to the \$200,000 44 Farms, Hillhouse Angus and Aberan Angus leader, Victory sired by the proven Marbling, leader, Preeminent.
- Lucy 334G, the herd sire producing dam of Lot 11 is a direct daughter of the legendary 44 Farms matriarch, Lucy 11209 sired by the longtime ORlgen roster leader, Enhance. The dam of Lot 11 posts a WR 2@101 while showing an ultrasound IMF ratio 6@109. Maternal siblings to the dam of Lot 11 include: Lucy 4775, the herd sire producing second-generation 44 Farms donor; Lucy 74014; the \$106,000 valued half interest selection of Double G Farms in the 2017 44 Farms Female Sale, Lucy 63043; Lucy 6549, the \$52,500 selection of RD Cattle Company in the 2018 444 Farms Female Sale; Main Attraction 4793, was the \$40,000 second high-selling bull of the 2016 Spring Sale at 44 Farms selling to Collins Family Farms; and Main Street 4800, the \$30,000 third high-selling bull of the 2016 Spring Sale at 44 Farms selling to Greg Wilmoth and Sons.

12 44 Rita 5224

BIRTH DATE: 02-21-2025 COW +*21202460 TATTOO: 5224

+*44 Faithful 2764 20577094
+*HPCA Veracious
+*DCF Ruby of Tiffany 6799
#*Mill Brae Identified 4031
+*H P C A Sunrise A246
+*V A R Generation 2100
DCF Ruby of Tiffany 7592

+*Williams Jonesboro 700-602
+*44 Closed for Business L03 20581411
+*44 Rita 0936
#*S S Enforcer E812
+*Powell Erica 7312
+*Roseda Powerball23 F091
+*FF Rita 5R42 of M532 Rampage

CED	BW	WW	YW	RADG	DMI	YH	SC	HP	CEM	MILK	TEAT	UDDR	FL
+4	+3.6	+99	+178	+38	+1.96	+1.1	+99	+11.0	+13	+17	+30	+47	+104
MW	MH	DOC	CLAW	ANGLE	PAP	HS	CW	MARB	RE	FAT			
+160	+1.8	+24	+43	+31	+2.82	+73	+92	+1.64	+1.26	+055			
\$AxH +271	\$AxJ +291	\$M +45	\$W +70	\$F +149	\$G +106	\$B +255	\$C +376						

CED	BW	WW	YW	DMI	YH	SC	DOC	HP	CEM	MILK	MW	MH	CW	MB	REA	FAT	TND	CLAW	ANGL	HS	PAP
76	80	3	1	93	15	52	30	53	21	89	1	1	1	5	4	89	64	10	1	91	79

NON-PARENT FEMALES

Top 1% \$AxJ	Top 1% RADG	Top 2% Angle	Top 3% \$C	Top 10% CEM
Top 1% \$B	Top 1% YW	Top 2% CWT	Top 4% \$G	Top 10% REA
Top 1% \$F	Top 2% \$AxH	Top 2% WW	Top 5% Marb	Top 25% Claw

- Rita 5224 is a powerful growth, CW, Marbling, RE, \$M, \$W, \$B and \$C combination prospect produced by a young donor in the 44 Farms program, Business L03 sired by the \$180,000 proven phenotype leader of the 44 Farms, Krebs Ranch and Thomas Ranch sire, Faithful.
- Business L03, the dam of Lot 12 is a direct daughter of the foundation Rita in the Blackstone Cattle Company program, Rita 0936 sired by the proven growth leader of the Soaring Eagle of the Ozarks program, Jonesboro 700-602. Business N23, a full sister to Lot 12 was the \$9,500 selection of 5T Ranch in the 2025 44 Farms December LiveOnline™ Sale.

44 BARBARA N121



44 BARBARA N121 / LOT 13

13 **44 Barbara N121** [D2F-DDF-M1F-NHF-OSF-RDF]
 BIRTH DATE: 02-10-2025 COW +*21216107 TATTOO: N121

*SEO Ultra Provider +*G A R Momentum K836
 +*FF Rito Ambitious +*Chair Rock Progress 3023
 20437882 *RMRK Rita 0237 *Thomas Edison 6764
 *RMRK Rita 8232

*E & B Wildcat 9402 #+*GAR Discovery 6737H
 *44 Barbara 2556 E&B Lady Plus 643
 20462816 +*Vintage Barbara 0217 *GB Fireball 672
 *PF 8100 6531

CED	BW	WW	YW	RADG	DMI	YH	SC	HP	CEM	MILK	TEAT	UDDR	FL								
+5	+2.8	+88	+157	+34	+1.53	+1.0	-.02	+9.9	+4	+32	+46	+52	+94								
MW	MH	DOC	CLAW	ANGLE	PAP	HS	CW	MARB	RE	FAT											
+102	+1.0	+11	+41	+49	+44	+34	+87	+2.01	+1.29	-.025											
\$AxH	\$AxJ	\$AxK	\$M	\$W	\$F	\$G	\$B	\$C													
+299	+295		+47	+88	+141	+130	+272	+400													
CED	BW	WW	YW	DMI	YH	SC	DOC	HP	CEM	MILK	MW	MH	CW	MB	REA	FAT	TND	CLAW	ANGL	HS	PAP
87	84	24	7	82	33	62	65	69	78	19	27	29	1	1	3	4	29	31	47	17	18

NON-PARENT FEMALES

Top 1% \$AxH	Top 1% \$G	Top 5% RADG	Top 10% YW
Top 1% \$AxJ	Top 1% Marb	Top 5% REA	Top 15% Fat
Top 1% \$B	Top 2% \$F	Top 10% \$W	Top 20% Claw
Top 1% \$C	Top 4% CWT	Top 10% WW	Top 20% Milk



44 BARBARA 2556 / A DAUGHTER OF THIS FOUNDATION 44 FARMS AND GRIMMIUS CATTLE COMPANY HEADLINER SELLS AS LOT 13.

• Barbara N121 is one of the top phenotypes, growth, PAP, CW, Marbling, RE, \$B and \$C prospects in this offering and stems from the featured Barbara in the 44 Farms and Grimmus Cattle Company joint embryo programs, Barbara 2556 sired

by the \$235,000 record-selling multi-trait feature, Ambitious. • Barbara 2556, the dam of Lot 13 is a direct daughter of the \$30,000 foundation 44 Farms Barbara, Barbara 0217 sired by the \$50,000 outcross Genex roster member, Wildcat.

44 RITA FAMILY



44 RITA N009 /
LOT 14

14

44 Rita N009

BIRTH DATE: 01-03-2025 COW +*21173299 TATTOO: N009

*Poss Deadwood 19597261
*Poss Ellunamere 399
*Poss Maverick
*Stevenson Declaration 70748
*44 Rita 0382 19812601
*FF Rita 5R42 of M532 Rampage
#*Basin Payweight 1682
Poss Pride 5163
Poss Easy Impact 0119
#Poss Ellunamere 0170
#*Jindra Acclaim
*RL 9061 Birdie 3102
#*Quaker Hill Rampage OA36
+G A R Protege M532

CED	BW	WW	YW	RADG	DMI	YH	SC	HP	CEM	MILK	TEAT	UDDR	FL								
+6	-.5	+67	+121	+28	+76	+5	+60	+10.7	+9	+31	+64	+73	+1.07								
MW	MH	DOC	CLAW	ANGLE	PAP	HS	CW	MARB	RE	FAT											
+76	+4	+18	+55	+44	+2.72	+78	+68	+1.84	+1.06	+0.14											
\$AxH	\$AxJ	\$M	\$W	\$F	\$G	\$B	\$C	\$370													
28	5	79	63	15	91	31	44	52	82	22	84	90	20	1	8	44	33	73	47	78	83

NON-PARENT FEMALES

Top 2% \$G	Top 4% \$C	Top 15% UDDER	Top 25% CWT
Top 2% Marb	Top 10% \$AxJ	Top 20% DMI	
Top 3% \$AxH	Top 10% \$F	Top 20% Milk	
Top 3% \$B	Top 15% BW	Top 20% REA	

- Rita N009 is a calving-ease, Marbling, RE and \$B prospect produced by the former headliner of the JB Farms donor program, Rita 0382 sired the record-selling genomic leader, Deadwood.
- Rita 0382, the dam of Lot 14 is a direct daughter of the 44 Farms herd sire producing leader, Rita 5R42 sired by the outcross headliner, Declaration 70748. The dam of Lot 14 posts a BR 1@94, a WR 1@100 and a YR 1@100. Maternal brothers to Lot 14 headlined the 2026 44 Farms Spring Bull Sale and include: the \$36,000 Lot 44, Cool Hand Luke 4130 selected by Circle F Farms; the \$27,000 Champ '13 4123; and the \$26,000 Foundation 4122.
- Due 1/9/27 to Byrd Bullseye 1186-A100.

15

44 Rita 5151 [D2F-DDF-MIF-NHF-OSF-RDF]

BIRTH DATE: 02-13-2025 COW *21203983 TATTOO: 5151

*K A Kindred 20446645
*K A Miss High Weigh 862
*44 Brigade
+FWY Rita 5566
#*GB Fireball 672
*G A R Sure Fire 6404
*GB Anticipation 432
*E W A High Weigh 3123
K A Miss Discovery 5163
#*Casino Bomber N33
*44 Rita 6821
#*V A R Discovery 2240
*FF Rita 2Q25 of 356H 9Q13

CED	BW	WW	YW	RADG	DMI	YH	SC	HP	CEM	MILK	TEAT	UDDR	FL								
+14	-1.7	+85	+163	+36	+2.23	+8	+9.3	+12.2	+17	+39	+52	+52	+1.09								
MW	MH	DOC	CLAW	ANGLE	PAP	HS	CW	MARB	RE	FAT											
+96	+7	+17	+55	+53	+2.62	-.09	+92	+1.80	+1.11	+0.54											
\$AxH	\$AxJ	\$M	\$W	\$F	\$G	\$B	\$C	\$406													
31	28	16	1	98	29	28	27	74	13	6	14	21	3	1	33	85	99	63	65	1	76

NON-PARENT FEMALES

Top 1% \$AxH	Top 1% \$F	Top 2% \$W	Top 3% Marb	Top 15% REA
Top 1% \$AxJ	Top 1% CEM	Top 2% CWT	Top 4% CED	Top 15% WW
Top 1% \$B	Top 1% HS	Top 2% Milk	Top 4% YW	
Top 1% \$C	Top 2% \$G	Top 2% RADG	Top 5% BW	

- Rita 5151 is a calving-ease, growth, HS, CW, Marbling, RE, \$W, \$B and \$C prospect produce by a proven and productive second-generation 44 Farms Rita, Rita 265J and sired by the \$185,000 ST Genetics roster member, Kindred.
- Rita 265J, the dam of Lot 15 blends the outcross 44 Farms sire, Brigade with a sensational producing daughter of the legendary 44 Farms herd sire, Discovery. The dam of Lot 15 posts a WR 3@99 and a YR 2@104 while carrying an ultrasound REA ratio 2@100.



44 RITA 5151 /
LOT 15

44 RITA M185



44 RITA M185 / LOT 16

16

44 Rita M185 [D2F-DDF-M1F-NHF-OSF-RDF]

BIRTH DATE: 09-09-2024 COW +*21042468 TATTOO: M185

*Basin Jameson 1076 20071781
 +*Basin Deposit 6249
 *Basin Joy 9140
 #*Basin Advance 3134
 +*Basin Lucy 4288
 #*EXAR Monumental 6056B
 +*Basin Joy 5367

+*44 Rita 0936 19864593
 +*Roseda Powerball23 F091
 +*FF Rita 5R42 of M532 Rampage
 #*E W A Peyton 642
 *Roseda Blackcap B103 D118
 #*Quaker Hill Rampage OA36
 +G A R Protege M532

RITA M185 IS A POWER GROWTH, CW, MARBLING, RE, \$W, \$B AND \$C COMBINATION BRED HEIFER PRODUCED BY THE PRODUCTIVE SECOND-GENERATION 44 FARMS RITA, RITA 0936 SIRED BY THE RECORD-SELLING MULTI-TRAIT FEATURE, JAMESON.

CED	BW	WW	YW	RADG	DMI	YH	SC	HP	CEM	MILK	TEAT	UDDR	FL
+2	+4.8	+121	+197	+30	+2.62	+1.2	+85	+12.2	+9	+24	+42	+40	+1.06
MW	MH	DOC	CLAW	ANGLE	PAP	HS	CW	MARB	RE	FAT			
+165	+1.4	+26	+50	+41	+2.50	+27	+109	+1.86	+1.16	-.006			
\$AxH	\$AxJ	\$AxK	\$M	\$W	\$F	\$G	\$B	\$C					
+278	+283	+66	+106	+146	+120	+267	+412						

CED	BW	WW	YW	DMI	YH	SC	DOC	HP	CEM	MILK	MW	MH	CW	MB	REA	FAT	TND	CLAW	ANGL	HS	PAP
70	86	1	4	99	10	48	12	41	40	84	1	3	1	2	7	15	83	47	12	10	68

NON-PARENT FEMALES

Top 1% \$AxJ	Top 1% \$G	Top 1% YW	Top 20% Angle	Top 25% RADG
Top 1% \$B	Top 1% \$W	Top 2% \$AxH	Top 20% Doc	
Top 1% \$C	Top 1% CWT	Top 2% Marb	Top 20% HS	
Top 1% \$F	Top 1% WW	Top 10% REA	Top 25% Fat	

- Rita M185 currently ranks among all non-parent females in the breed Number 6 for WW and Number 18 for YW and is the ONLY non-parent female in the breed with her combination of CED, BW, WW, YW, SC, HP, PAP, CW, Marbling, RE, \$M, \$W, \$B and \$C.
- Rita M185 posts an ultrasound IMF ratio of 116. Rita 0936,

- the dam of Lot 16 is a direct daughter of the herd sire maker in the 44 Farms program, Rita 5R42 sired by the proven growth feature of the Roseda Farms program, Powerball23. The dam of Lot 16 records a WR 1@114 and a YR 1@100 while showing ultrasound ratios IMF 15@104 and REA 15@100.
- Due 9/24/26 to GAR Grand Slam.

44 FAITHFUL DAUGHTERS



44 ERICA M337 /
LOT 17



44 ESTINA 4498 /
LOT 18

17

44 Erica M337 [AMF-CAF-D2F-DDF-MIF-NHF-OHF-OSF-RDF]

BIRTH DATE: 12-18-2024 COW +*21171349 TATTOO: M337

+*HPCA Veracious #*Mill Brae Identified 4031
+*44 Faithful 2764 #*H P C A Sunrise A246
20577094 +*DCF Ruby of Tiffany 6799 #*V A R Generation 2100
DCF Ruby of Tiffany 7592

+*G A R Home Town #*G A R Ashland
+*44 Erica 1110 #*Chair Rock Sure Fire 6095
20132500 +*BarW M758 Storm 8016 +*G A R Storm
*D A R Erica M758

CED	BW	WW	YW	RADG	DMI	YH	SC	HP	CEM	MILK	TEAT	UDDR	FL
+10	+4	+72	+136	+29	+174	+5	+11	+9.3	+7	+23	+56	+77	+110
MW	MH	DOC	CLAW	ANGLE	PAP	HS	CW	MARB	RE	FAT			
+58	+3	+28	+48	+50	+1.70	+48	+79	+1.77	+1.30	+0.62			
\$AxH +283	\$AxJ +266	\$M +76	\$W +69	\$F +136	\$G +112	\$B +249	\$C +399						

CED	BW	WW	YW	DMI	YH	SC	DOC	HP	CEM	MILK	MW	MH	CW	MB	REA	FAT	TND	CLAW	ANGL	HS	PAP
22	14	78	38	55	93	41	14	85	81	80	87	91	31	3	9	86	64	34	33	59	55

NON-PARENT FEMALES

Top 1% \$AxH	Top 2% \$G	Top 10% CWT	Top 25% \$M
Top 1% \$C	Top 3% \$F	Top 15% Doc	Top 25% YW
Top 2% \$AxJ	Top 3% Marb	Top 15% UDDER	
Top 2% \$B	Top 4% REA	Top 20% CED	

• Erica M337 is a low-birth, Marbling, RE, \$B and \$C daughter of the foundation 44 Farms Erica, Erica 1110 sired by the \$180,000 phenotype leader of the 44 Farms, Krebs Ranch and Thomas Ranch sire, Faithful.

• Erica M337 records ultrasound ratios IMF 119 and REA 128. Erica 1110, the dam of Lot 17 blends the multi-trait female sire, Home Town with a proven and productive daughter of Storm in the Bar Diamond Ranch program, The dam of Lot 17 balances a BR 1@9 with a YR 1@101 while carrying an ultrasound IMF ratio 8@106.

• Due 9/24/26 to 44 Endorsement 137H.

18

44 Estina 4498

BIRTH DATE: 12-14-2024 COW +*21168257 TATTOO: 4498

+*HPCA Veracious #*Mill Brae Identified 4031
+*44 Faithful 2764 #*H P C A Sunrise A246
20577094 +*DCF Ruby of Tiffany 6799 #*V A R Generation 2100
DCF Ruby of Tiffany 7592

+*44 Main Event 4787 #*V A R Discovery 2240
+*44 Estina 107H #*Da Es Ro Lucy 11209
19704480 +*Wilks Estina 6088 #*Quaker Hill Rampage OA36
+*Spruce Mtn Estina 4024

CED	BW	WW	YW	RADG	DMI	YH	SC	HP	CEM	MILK	TEAT	UDDR	FL
+4	+4.6	+99	+178	+32	+2.76	+1.2	+8.0	+8.8	+11	+23	+59	+62	+1.03
MW	MH	DOC	CLAW	ANGLE	PAP	HS	CW	MARB	RE	FAT			
+139	+1.4	+23	+40	+42	+3.39	+40	+91	+1.45	+1.06	+0.14			
\$AxH +194	\$AxJ +197	\$M +54	\$W +78	\$F +130	\$G +97	\$B +228	\$C +350						

CED	BW	WW	YW	DMI	YH	SC	DOC	HP	CEM	MILK	MW	MH	CW	MB	REA	FAT	TND	CLAW	ANGL	HS	PAP
94	99	2	1	100	5	55	56	91	44	64	2	2	1	4	5	26	45	5	8	39	87

NON-PARENT FEMALES

Top 1% YW	Top 5% \$F	Top 15% \$AxJ	Top 20% REA
Top 2% CWT	Top 10% \$C	Top 15% Claw	Top 25% \$W
Top 2% WW	Top 10% \$G	Top 15% RADG	Top 25% Angle
Top 5% \$B	Top 10% Marb	Top 20% \$AxH	Top 25% CEM

• Estina 4498 is a growth, CW, Marbling, RE and \$B female produced by the foundation second-generation Estina in the 44 Farms donor program, Estina 107H and is sired by the \$180,000 headliner, Faithful.

• Estina 107H, the dam of Lot 18 blends the proven 44 Farms herd sire, Main Event 4787 with a tremendous producing daughter of the Mapleton Farm and Quaker Hill Farms sire, Rampage. The dam of Lot 18 records a WR 2@102 and a YR 2@100 while carrying an ultrasound IMF ratio 8@100. Estina 3323, a maternal sister to Lot 18 was the \$11,000 selection of Grimmus Cattle Company in the 2025 44 Farms May LiveOnline™ Sale.

• Due 11/22/2026 to 44 Victory.

WELCOME TO

A PARADIGM CHANGE *for* *the* BEEF INDUSTRY

When Walmart reached out for our help in delivering high-quality Angus beef to their customers, we knew we needed to reach out to talented ranchers like you to help us deliver that quality.

Welcome to Prime Pursuits, a paradigm-changing program designed to gather the best talent around the best genetics to deliver the best Angus beef to America's table.



Prime Pursuits is built on our proprietary platform, Prime Intelligence™, which is helping producers turn data into real solutions.

PROGRAM REQUIREMENTS

Source and Age Verified

No Hormones Added

Third-Party Verification

Predominantly Angus Strong® Genetics

100% Sired by Registered Black Angus Bulls

Minimum 1 Load (48,000 lbs)

Meets the USDA Definition of Angus being 100% Black or Black Baldy or Angus Verified

Weaned for a minimum of 45 days

No more than 90 days from youngest to oldest in group

Subject to minimal sort to ensure uniformity

IMI CARE Certified strongly encouraged

Powered by



To learn more, contact our procurement team at (806) 414-5858

Or visit us at PrimePursuits.com



UPCOMING SALES & EVENTS

SEPTEMBER 2026

SMARTAUCTIONS ONLINE FEMALE SALE

OCTOBER 24, 2026

FALL BULL SALE

JANUARY 2027

PRIME PURSUITS SUMMIT IN SCOTTSDALE



Scan the QR code
to learn more
about the Summit.