



# AUDLEY

---

# ANGUS

**2026 ANGUS FEMALE SALE**

SATURDAY • MAY 16 • 11 AM

AT THE FARM IN BERRYVILLE, VIRGINIA



# AUDLEY ANGUS

752 Audley Lane • Berryville, VA 22611  
General Manager - Turner Kobayashi  
Angus Manager - Matthew Deacon 540-460-6926  
deacon@audleyfarm.com • www.audleyfarm.com

Dear Fellow Angus Breeders,

It is with great pleasure that all of us at Audley Farm invite you to 4th Annual Female Sale hosted at our historic farm in the beautiful Shenandoah Valley on Saturday May 16th at 11am. This year we are once excited to welcome guest consignments from Bliss Lane Cattle Company and Edgewood Angus!

We have strived to put together an offering that will meet the needs of buyers across the country and region. This year our Fall Bred Heifer offering is stacked with quality in both EPDs and phenotype. These heifers represent many top sires like Virginia Tech Statesman, Riverbend Black Label and Yon Saluda. The Spring Yearling Heifers are a very complete set of females and have been bred back to exciting new sires including YON Southern Rock and Antczak Pathway. We will also be offering a small group of 3 year old spring calving cows with heifer calves at side.

The cattle will be available to view at the farm anytime and we would be happy to schedule a visit for those that would like to personally take time to evaluate the offering. If you have any questions about the cattle or would like to setup a visit please contact Matthew Deacon at 540-460-6926.

We would like to take the time to thank the farm crew here at Audley Farm that have raised and managed these females to ensure our best offering. A sincere thank you goes out to the Cotton & Associates team for their guidance and support as we have grown our program over the last couple years.

Sincerely,

Turner Kobayashi  
General Manager

Matthew Deacon  
Cattle Manager



Turner & Matthew



*Welcome!*



## SCHEDULE OF EVENTS

**FRIDAY, MAY 15**  
6 pm Dinner & Entertainment

**SATURDAY, MAY 16**  
10-11 Lunch will be served  
11 am Audley Angus Spring Female Sale



# Watch the Sale on CCI.live!

*The best, the fastest and most  
comprehensive marketing & bidding tool!*

## *How to Bid Online...*

- **As a buyer**, you do not need an account or to login to watch the sale but you must have a validated account to bid.
  - After you are logged in, you must proceed to the sale page for any and every auction and click **"Get Buyer Number."** Some auctions require a pass-code to obtain a buyer number even after you are approved by CCI.live. Pass codes generally come from the sale manager or ranch for that particular sale.
  - CCI.live will operate with ease on a **cellular device, laptop, desktop or tablet.**
- A **modern or current browser** is important and will make your experience better. You do not need to install the app on cellular devices to watch a sale. CCI.live is a browser-based application meaning it will play on most new browsers, but you can also download the CCI.live app at the Apple App Store or through Google Play.
- **For successful bidding you must have good Internet service!** It is very important to be stationary. If you are driving and bidding, expect to have some service issues. If you are stationary on a good device, with healthy Internet, expect a very successful bidding environment. If you have slow Internet watch the "asking price" on the screen - it is real time and refresh your browser if you feel like you have some lag.
- **Support line open during all sales. 405-400-9505** - Please contact the ranches for invoices and trucking.

## *Viewed around the world!*



**SALE CATALOG, VIDEOS,  
and LIVE BROADCAST...**  
all at your fingertips from the sale page at  
[www.CCI.live](http://www.CCI.live)! Watch live sales weekly!



**www.CCI.live**  
(405) 400-9505 Text or Call  
[schedule@cci.live](mailto:schedule@cci.live)  
Over 35 years in livestock marketing!

*Guest  
Consignors:*



**BLISS LANE  
CATTLE COMPANY**  
Joe and Mary Zarella  
Great Falls, Va

**Pete Henderson (757) 880-7274**  
[pete@hendersoninc.com](mailto:pete@hendersoninc.com)

**Peter Henderson (757) 298-6300**  
[peter@hendersoninc.com](mailto:peter@hendersoninc.com)

**Doug Harris (804) 332-1456**  
[wdouglasharris@verizon.net](mailto:wdouglasharris@verizon.net)

**Oliva Thompson (540) 892-4447**  
[othompson11@vt.edu](mailto:othompson11@vt.edu)



# AUDLEY

---

# ANGUS

## 2026 ANGUS FEMALE SALE

SATURDAY • MAY 16 • 11 AM

### **AUCTIONEER**

Cody Lowderman 309-833-5543

### **RINGMEN**

Reese Tuckwiller, American Angus Assoc, 308-360-3048  
Terry Cotton 816-390-3227  
Shane Ryan 309-371-7490

*Buyers unable to attend the sale may send their bids to the sale staff at any time.*

### **UPDATES AND ANNOUNCEMENTS**

A supplemental update sheet will be available sale day with up-to-date information. All announcements made from the auction block take precedence over printed matter in this sale book.

### **TERMS & CONDITIONS**

Settlement expected sale day unless prior arrangements are made before the sale. All cattle sell under the terms and conditions as recommended by the American Angus Association relating to genetic defects.

### **PREGNANCY EXAMINATION INFORMATION**

All cattle have been pregnancy checked by a competent veterinarian and are called safe to the A.I. or pasture dates as best can be determined by advanced palpation. In respect to A.I. dates, they are not unconditionally guaranteed, other than the fact they are pregnant.

### **HERD HEALTH**

All cattle will be accompanied by proper health certificates for immediate shipment.

**VIDEOS OF THE SALE OFFERING WILL BE AVAILABLE**  
[www.audleyfarm.com](http://www.audleyfarm.com) • [www.cci.live](http://www.cci.live)  
[www.cotton-associates.com](http://www.cotton-associates.com)

### **SALE MANAGED BY**

For information on sale cattle, please contact one of our associates:



LARRY COTTON 517-294-0777  
RYAN COTTON 706-206-8361  
MIKE GOTHARD 540-894-1055  
JERRY CRENSHAW 703-244-4767  
ZACK HILEMAN 540-460-2776

[www.cotton-associates.com](http://www.cotton-associates.com)

### **TRUCKING**

Randy Lathrop, Lathrop Trucking will be available to assist you sale day. Evan Bixby 319-559-0167 • 847-426-5009

### **INSURANCE**

Your cattle may be insured through James F Bessler 815-762-2621

### **SALE LOCATION**

GPS at Audley Angus, 752 Audley Lane, Berryville, VA 22611

### **HOTEL ACCOMODATIONS**

*Holiday Inn* • Winchester, VA • 540-667-3300  
*Town Place Suites by Marriott* • Winchester, VA • 540-722-2722  
*Hampton Inn* • Winchester, VA • 540-678-4000

### **FOOD AND REFRESHMENTS**

Lunch 10-11:00 AM

### **AIRPORT**

Dulles International 45 min from Farm



### **Bid Live Online**

[www.CCI.live](http://www.CCI.live) - Watch the Sale  
(405) 400-9505 Text/Call - [schedule@cci.live](mailto:schedule@cci.live)  
Find us on the App Store and Google Play  
Over 35 years in livestock marketing!



Visit the Angus Journal® Web site, [www.angusjournal.com](http://www.angusjournal.com), and view this sale book online.  
References: American Angus Association®, AHIR®, AngusSource®, CAB®, Pathfinder®.

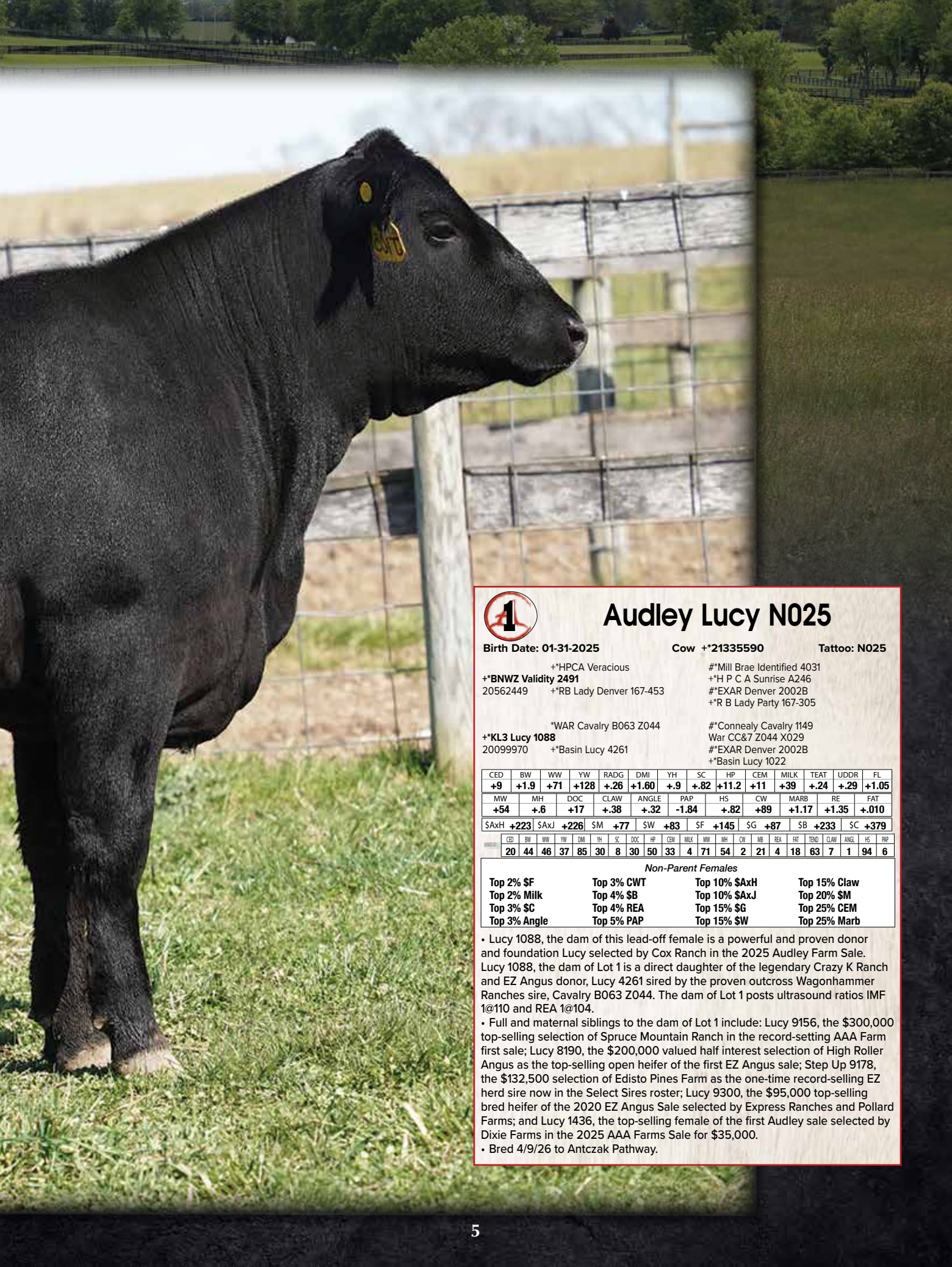
EPDs current as of 4-10-26. Updated EPDs can be viewed online at [www.angus.org](http://www.angus.org).

# Lucy N025

***Lucy N025 is a PAP, Marb., RE, \$M, \$B and \$C daughter of the former cornerstone Lucy in the Audley Farm and KL3 Farms joint embryo programs, Lucy 1088 sired by the \$220,000 multi-trait leader of the Edisto Pines Farm, Nowatzke Cattle Company and Select Sires rosters, Validity.***



*Chris Mitchell*



# Audley Lucy N025

Birth Date: 01-31-2025

Cow #21335590

Tattoo: N025

\*HPCA Veracious  
 +\*BNWZ Validity 2491  
 20562449 +\*RB Lady Denver 167-453

#Mill Brae Identified 4031  
 +\*H P C A Sunrise A246  
 #EXAR Denver 2002B  
 +\*R B Lady Party 167-305

\*WAR Cavalry B063 Z044  
 +\*KL3 Lucy 1088  
 20099970 +\*Basin Lucy 4261

#Connealy Cavalry 1149  
 War CC&7 Z044 X029  
 #EXAR Denver 2002B  
 +\*Basin Lucy 1022

CED	BW	WW	YW	RADG	DMI	YH	SC	HP	CEM	MILK	TEAT	UDDR	FL		
+9	+1.9	+71	+128	+26	+1.60	+9	+82	+11.2	+11	+39	+24	+29	+1.05		
MW	MH	DOC	CLAW	ANGLE	PAP	HS	CW	MARB	RE	FAT					
+54	+6	+17	+38	+32	-1.84	+82	+89	+1.17	+1.35	+0.10					
\$AxH	+223	\$AxJ	+226	\$M	+77	\$W	+83	\$F	+145	\$G	+87	\$B	+233	\$C	+379

CED	BW	WW	YW	DMI	YH	SC	DOC	HP	CEM	MILK	MW	MH	CW	RE	FAT	TEND	CLAW	ANGL	HS	PAP	
20	44	46	37	85	30	8	30	50	33	4	71	54	2	21	4	18	63	7	1	94	6

### Non-Parent Females

Top 2% \$F	Top 3% CWT	Top 10% \$AxH	Top 15% Claw
Top 2% Milk	Top 4% \$B	Top 10% \$AxJ	Top 20% \$M
Top 3% \$C	Top 4% REA	Top 15% \$G	Top 25% CEM
Top 3% Angle	Top 5% PAP	Top 15% \$W	Top 25% Marb

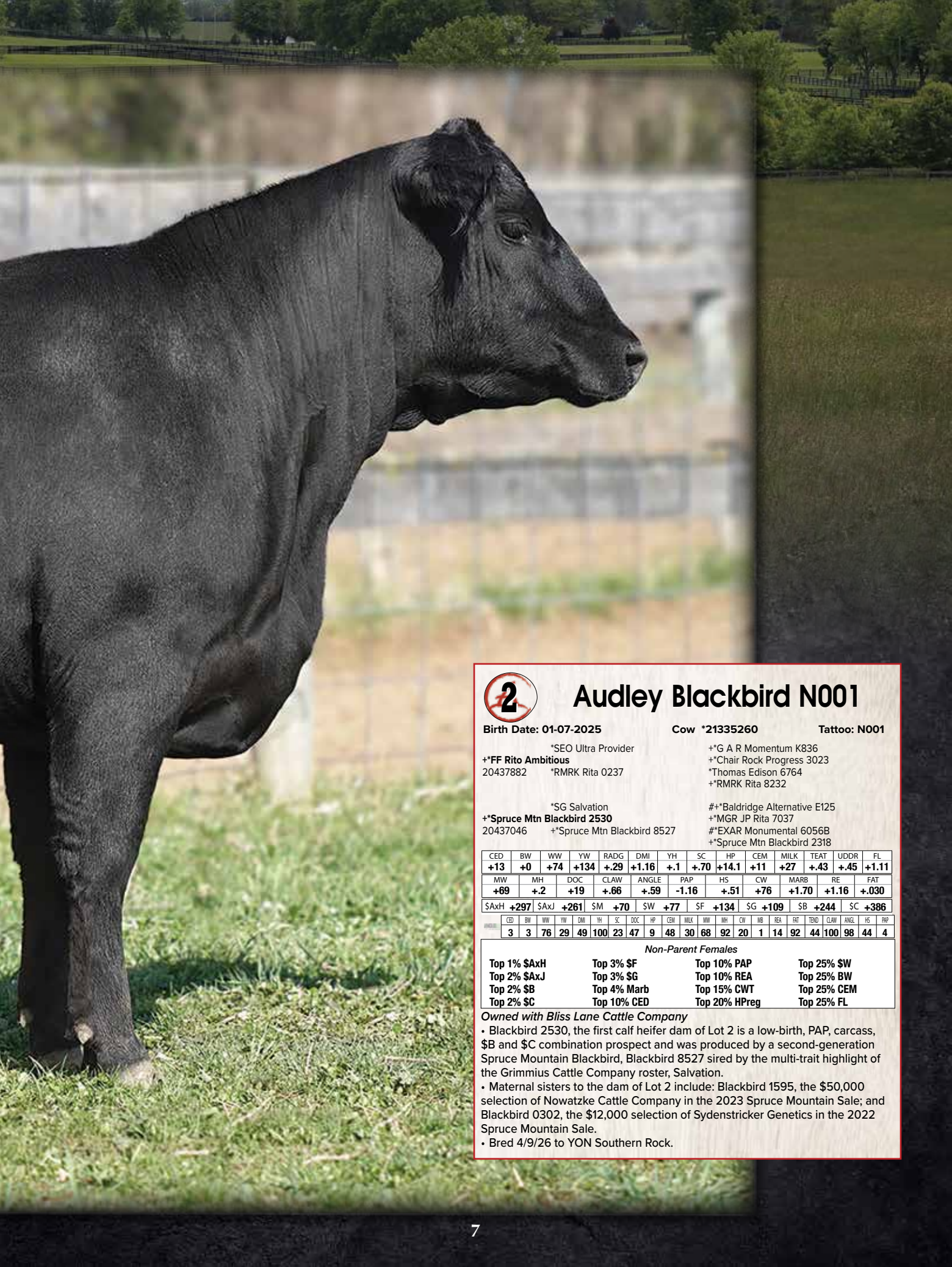
- Lucy 1088, the dam of this lead-off female is a powerful and proven donor and foundation Lucy selected by Cox Ranch in the 2025 Audley Farm Sale. Lucy 1088, the dam of Lot 1 is a direct daughter of the legendary Crazy K Ranch and EZ Angus donor, Lucy 4261 sired by the proven outcross Wagonhammer Ranches sire, Cavalry B063 Z044. The dam of Lot 1 posts ultrasound ratios IMF 1@110 and REA 1@104.
- Full and maternal siblings to the dam of Lot 1 include: Lucy 9156, the \$300,000 top-selling selection of Spruce Mountain Ranch in the record-setting AAA Farm first sale; Lucy 8190, the \$200,000 valued half interest selection of High Roller Angus as the top-selling open heifer of the first EZ Angus sale; Step Up 9178, the \$132,500 selection of Edisto Pines Farm as the one-time record-selling EZ herd sire now in the Select Sires roster; Lucy 9300, the \$95,000 top-selling bred heifer of the 2020 EZ Angus Sale selected by Express Ranches and Pollard Farms; and Lucy 1436, the top-selling female of the first Audley sale selected by Dixie Farms in the 2025 AAA Farms Sale for \$35,000.
- Bred 4/9/26 to Antczak Pathway.

# Blackbird N001

*Blackbird N001 is a calving-ease, PAP, Marb., REA, \$B and \$C daughter of the foundation Blackbird in the Audley Farm and Bliss Lane Cattle Company programs, Blackbird 2530 sired by the record-selling multi-trait leader, Ambitious.*



*Chris Mitchell*



# Audley Blackbird N001

Birth Date: 01-07-2025 Cow #21335260 Tattoo: N001

\*SEO Ultra Provider  
 \*\*FF Rito Ambitious 20437882 \*RMRK Rita 0237

+\*G A R Momentum K836  
 +\*Chair Rock Progress 3023  
 \*Thomas Edison 6764  
 +\*RMRK Rita 8232

\*SG Salvation  
 +\*Spruce Mtn Blackbird 2530 20437046  
 +\*Spruce Mtn Blackbird 8527

#\*Baldridge Alternative E125  
 +\*MGR JP Rita 7037  
 #\*EXAR Monumental 6056B  
 +\*Spruce Mtn Blackbird 2318

CED	BW	WW	YW	RADG	DMI	YH	SC	HP	CEM	MILK	TEAT	UDDR	FL		
+13	+0	+74	+134	+29	+1.16	+1	+70	+14.1	+11	+27	+43	+45	+1.11		
MW	MH	DOC	CLAW	ANGLE	PAP	HS	CW	MARB	RE	FAT					
+69	+2	+19	+66	+59	-1.16	+51	+76	+1.70	+1.16	+0.30					
\$AxH	+297	\$AxJ	+261	\$M	+70	\$W	+77	SF	+134	SG	+109	\$B	+244	\$C	+386

CED	BW	WW	YW	DMI	YH	SC	DOC	HP	CEM	MILK	MW	MH	CW	MB	REA	FAT	TEND	CLAW	ANGL	HS	PAP
3	3	76	29	49	100	23	47	9	48	30	68	92	20	1	14	92	44	100	98	44	4

*Non-Parent Females*

Top 1% \$AxH	Top 3% \$F	Top 10% PAP	Top 25% \$W
Top 2% \$AxJ	Top 3% \$G	Top 10% REA	Top 25% BW
Top 2% \$B	Top 4% Marb	Top 15% CWT	Top 25% CEM
Top 2% \$C	Top 10% CED	Top 20% HPreg	Top 25% FL

*Owned with Bliss Lane Cattle Company*

- Blackbird 2530, the first calf heifer dam of Lot 2 is a low-birth, PAP, carcass, \$B and \$C combination prospect and was produced by a second-generation Spruce Mountain Blackbird, Blackbird 8527 sired by the multi-trait highlight of the Grimmus Cattle Company roster, Salvation.
- Maternal sisters to the dam of Lot 2 include: Blackbird 1595, the \$50,000 selection of Nowatzke Cattle Company in the 2023 Spruce Mountain Sale; and Blackbird 0302, the \$12,000 selection of Sydenstricker Genetics in the 2022 Spruce Mountain Sale.
- Bred 4/9/26 to YON Southern Rock.

# Gettysburg Daughters



**Audley Enchantress N023 / Lot 3**



**Audley Beauty N009 / Lot 4**

**3**

## Audley Enchantress N023

Birth Date: 01-30-2025

Cow \*21335612

Tattoo: N023

\*WAR Cavalry B063 Z044  
 +\*EZAR Gettysburg 1061  
 20028170 \*Paf Rita 7096

#\*Connealy Cavalry 1149  
 War CC&7 Z044 X029  
 #\*Connealy Confidence Plus  
 \*Paf Rita 5091

+\*Riverbend Ajax 9210  
 \*Audley Enchantress K023  
 20307410 \*Audley Enchantress H071

#\*Connealy Confidence Plus  
 \*H P C A Sure Fire P245  
 #\*G A R Quantum  
 #Audley Enchantress E003

CED	BW	WW	YW	RADG	DMI	YH	SC	HP	CEM	MILK	TEAT	UDDR	FL								
+3	+2.6	+93	+170	+37	+1.94	+8	+39	+6.8	+9	+30	+5.4	+48	+1.02								
MW	MH	DOC	CLAW	ANGLE	PAP	HS	CW	MARB	RE	FAT											
+79	+6	+19	+52	+48	+1.25	+41	+90	+1.58	+90	+0.51											
\$AxH	+243	\$AxJ	+217	\$M	+65	\$W	+95	\$F	+143	\$G	+99	\$B	+242	\$C	+379						
CED	BW	WW	YW	DMI	YH	SC	DOC	HP	CEM	MILK	MW	MH	CW	MB	REA	FAT	TEND	CLAW	ANGL	HS	PAP
42	67	24	8	78	63	70	67	98	40	38	74	78	10	2	47	76	96	41	40	44	75

**Non-Parent Females**

Top 1% RADG	Top 3% \$B	Top 4% \$W	Top 10% \$AxJ
Top 2% \$F	Top 3% \$C	Top 4% WW	Top 10% \$G
Top 2% YW	Top 3% CWT	Top 10% \$AxH	Top 10% Marb

**4**

## Audley Beauty N009

Birth Date: 01-23-2025

Cow \*21335614

Tattoo: N009

\*WAR Cavalry B063 Z044  
 +\*EZAR Gettysburg 1061  
 20028170 \*Paf Rita 7096

#\*Connealy Cavalry 1149  
 War CC&7 Z044 X029  
 #\*Connealy Confidence Plus  
 \*Paf Rita 5091

+\*E W A West Point 7258  
 #\*Audley Beauty J022  
 20084376 Audley Beauty D001

#\*G A R Momentum  
 +\*E W A 3114 of 128 Weigh Up  
 #\*Connealy Comrade 1385  
 Anky Beauty 9243

CED	BW	WW	YW	RADG	DMI	YH	SC	HP	CEM	MILK	TEAT	UDDR	FL								
+8	+1.0	+82	+144	+30	+1.76	+7	+1.81	+7.9	+8	+36	+4.3	+36	+97								
MW	MH	DOC	CLAW	ANGLE	PAP	HS	CW	MARB	RE	FAT											
+49	+4	+23	+56	+45	+1.20	+33	+77	+1.31	+1.16	+0.94											
\$AxH	+224	\$AxJ	+223	\$M	+70	\$W	+99	\$F	+123	\$G	+85	\$B	+209	\$C	+341						
CED	BW	WW	YW	DMI	YH	SC	DOC	HP	CEM	MILK	MW	MH	CW	MB	REA	FAT	TEND	CLAW	ANGL	HS	PAP
42	42	38	32	78	69	12	25	88	74	8	83	83	12	7	6	98	100	30	14	28	47

**Non-Parent Females**

Top 3% \$W	Top 10% \$B	Top 10% \$C	Top 15% YW
Top 4% Milk	Top 10% \$C	Top 15% \$G	Top 20% WW
Top 10% \$AxH	Top 10% \$F	Top 15% CWT	Top 25% HS
Top 10% \$AxJ	Top 10% REA	Top 15% Marb	Top 25% RADG

- Enchantress N023 is a power growth, PAP, Marb., \$W, \$B and \$C prospect produced by a sensational producing dam, Enchantress K023 sired by the proven record-selling Blackstone Cattle Company sire, Gettysburg.
- Enchantress N023 posts a birth ratio of 99 and weaning ratio of 117. The dam of Lot 3 blends the proven former Audley herd sire Ajax 9210 with a first calf heifer sired by the Daltons on the Sycamore, Big Timber and Select Sires roster member, Quantum. The dam of Lot 3 records a BR 2@94 and a WR 2@117.
- Bred 4/9/26 to Antczak Pathway.

- Beauty N009 is a growth, Marb., RE, \$W, \$B and \$C daughter of the proven and productive Beauty J022 sired by the proven growth and phenotype leader of the Blackstone Cattle Company program, Gettysburg.
- Beauty N009 records a weaning ratio of 114. The dam of Lot 4 blends the proven carcass leader of the Edgewood Angus and Select Sires roster member, West Point with a daughter of the Select Sires calving-ease specialist, Comrade. The dam of Lot 4 posts a WR 3@113.
- Bred 4/9/26 to YON Southern Rock.

# Performance Prospects



**Audley Rita N007 / Lot 5**



**Audley Chloe N010 / Lot 6**

**5**

## Audley Rita N007

Birth Date: 01-21-2025

Cow \*21335610

Tattoo: N007

\*WAR Cavalry B063 Z044  
 +\*EZAR Gettysburg 1061  
 20028170 \*Paf Rita 7096

#\*Connealy Cavalry 1149  
 War CC&7 Z044 X029  
 #\*Connealy Confidence Plus  
 \*Paf Rita 5091

+\*Yon Top Cut G730  
 \*Audley Rita K022  
 20336717 +\*Audley Miss Index D049

#\*Spring Cove Reno 4021  
 +\*Yon Sarah D668  
 #\*V A R Index 3282  
 +\*BJ Complete 1287

CED	BW	WW	YW	RADG	DMI	YH	SC	HP	CEM	MILK	TEAT	UDDR	FL
+4	+2.1	+89	+155	+30	+1.95	+5	+78	+13.2	+12	+27	+57	+47	+1.13
MW	MH	DOC	CLAW	ANGLE	PAP	HS	CW	MARB	RE	FAT			
+92	+6	+26	+52	+54	+1.17	+25	+69	+1.35	+76	+0.27			
\$AxH	\$AxJ	\$M	\$W	\$F	\$G	\$B	\$C						
+204	+175	+82	+89	+106	+87	+194	+334						

CED	BW	WW	YW	DMI	YH	SC	DOC	HP	CEM	MILK	MW	MH	CW	MB	REA	FAT	TEND	CLAW	ANGL	HS	PAP
44	81	13	12	72	68	61	20	9	17	53	27	55	27	6	51	72	100	40	83	21	57

Non-Parent Females

Top 10% \$W	Top 15% \$C	Top 20% \$B	Top 20% HS
Top 10% WW	Top 15% \$G	Top 20% \$M	Top 25% \$AxJ
Top 10% YW	Top 15% CEM	Top 20% Doc	Top 25% CWT
Top 15% \$AxH	Top 15% Marb	Top 20% FL	Top 25% RADG

- Rita N007 is a growth, PAP, PAP, HS, Marb., \$M, \$W and \$C prospect produced by a productive female and highlight of the Audley spring calving program, Rita K022 sired by the proven son of the \$700,000 valued Rita 7096, Gettysburg.
- Rita N007 records a weaning ratio of 108. The dam of Lot 5 blends the proven \$M leader of the Select Sires roster, Top Cut with a daughter of the foundation female sire in the 44 Farms program, Index. The dam of Lot 5 posts a WR 2@103.
- Bred 4/9/26 to YON Southern Rock.

**6**

## Audley Chloe N010

Birth Date: 01-23-2025

Cow +\*21335261

Tattoo: N010

\*SG Salvation  
 +\*Riverbend Black Label J1810  
 20342645 +\*E W A 6121 of 3128 Sure Fire

#\*Baldridge Alternative E125  
 +\*MGR JP Rita 7037  
 #\*G A R Sure Fire  
 +\*E W A 3128 of 9067 Weigh Up

#\*V A R Power Play 7018  
 +\*Vintage Chloe 9071  
 19349028 +\*DCF Chloe 5769

#\*Basin Payweight 1682  
 +\*Sandpoint Blackbird 8809  
 #\*V A R Discovery 2240  
 EXAR Chloe 2385

CED	BW	WW	YW	RADG	DMI	YH	SC	HP	CEM	MILK	TEAT	UDDR	FL
+9	+9	+77	+135	+29	+1.08	+4	+1.08	+8.9	+8	+31	+31	+39	+1.00
MW	MH	DOC	CLAW	ANGLE	PAP	HS	CW	MARB	RE	FAT			
+84	+6	+11	+50	+47	+3.54	+81	+60	+81	+60	-0.22			
\$AxH	\$AxJ	\$M	\$W	\$F	\$G	\$B	\$C						
+125	+88	+45	+82	+99	+63	+162	+255						

CED	BW	WW	YW	DMI	YH	SC	DOC	HP	CEM	MILK	MW	MH	CW	MB	REA	FAT	TEND	CLAW	ANGL	HS	PAP
6	27	47	37	37	70	33	88	70	77	26	57	56	45	24	85	59	80	53	26	95	91

Non-Parent Females

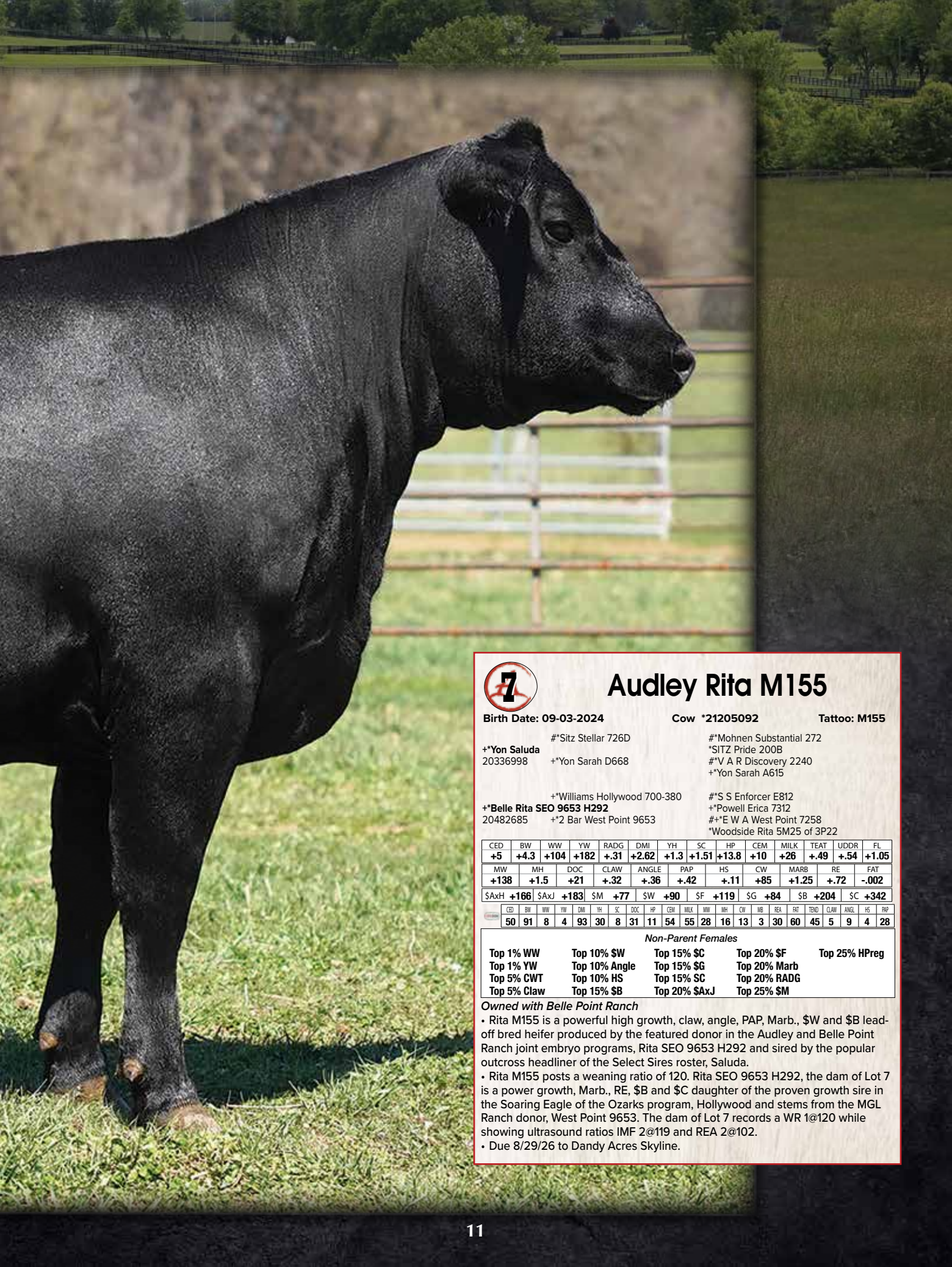
Top 15% Fat	Top 20% \$W	Top 20% Milk
-------------	-------------	--------------

- Chloe N010 is a balanced-trait daughter of the \$140,000 valued foundation Chloe in the Audley and Spruce Mountain Ranch joint embryo programs, Chloe 9071 sired by the \$150,000 record-selling Riverbend Ranch and Select Sires roster member, Black Label J1810.
- The dam of Lot 6 is a powerful and proven daughter of the foundation Lylester Ranch Chloe, Chloe 5769 sired by the record-selling Rooney Angus Ranch and Vintage Angus sire, Power Play.
- Full and maternal sisters to the dam of Lot 6 include: Chloe 939, the \$60,000 second high-selling female of the 2021 Lylester Ranch LiveOnline Sale selling to Vintage Angus Ranch; Chloe 1259, the \$45,000 third high-selling open heifer of the 2023 Lylester Ranch LiveOnline Sale selected by AAA Farms; Chloe 1241, the \$27,500 selection of Vintage Angus in that same offering; and Chloe 1417, the \$17,500 selection of Spruce Mountain Ranch in that same event.
- Bred 4/9/26 to YON Southern Rock.

# Rita M155



*Chris Mitchell*



# Audley Rita M155

Birth Date: 09-03-2024

Cow #21205092

Tattoo: M155

\*Yon Saluda  
20336998

#\*Sitz Stellar 726D

+\*Yon Sarah D668

#\*Mohnen Substantial 272  
\*SITZ Pride 200B  
#\*V A R Discovery 2240  
+\*Yon Sarah A615

+\*Belle Rita SEO 9653 H292  
20482685

+\*Williams Hollywood 700-380

+\*2 Bar West Point 9653

#\*S S Enforcer E812  
+\*Powell Erica 7312  
#\*\*E W A West Point 7258  
\*Woodside Rita 5M25 of 3P22

CED	BW	WW	YW	RADG	DMI	YH	SC	HP	CEM	MILK	TEAT	UDDR	FL		
+5	+4.3	+104	+182	+31	+2.62	+1.3	+1.51	+13.8	+10	+26	+49	+54	+1.05		
MW	MH	DOC	CLAW	ANGLE	PAP	HS	CW	MARB	RE	FAT					
+138	+1.5	+21	+32	+36	+42	+11	+85	+1.25	+72	-0.02					
\$AxH	+166	\$AxJ	+183	\$M	+77	\$W	+90	\$F	+119	\$G	+84	\$B	+204	\$C	+342

CED	BW	WW	YW	DMI	YH	SC	DOC	HP	CEM	MILK	MW	MH	CW	MB	REA	FAT	TEND	CLAW	ANGL	HS	PAP
50	91	8	4	93	30	8	31	11	54	55	28	16	13	3	30	60	45	5	9	4	28

Non-Parent Females

Top 1% WW	Top 10% \$W	Top 15% \$C	Top 20% \$F	Top 25% HPreg
Top 1% YW	Top 10% Angle	Top 15% \$G	Top 20% Marb	
Top 5% CWT	Top 10% HS	Top 15% SC	Top 20% RADG	
Top 5% Claw	Top 15% \$B	Top 20% \$AxJ	Top 25% \$M	

Owned with Belle Point Ranch

- Rita M155 is a powerful high growth, claw, angle, PAP, Marb., \$W and \$B lead-off bred heifer produced by the featured donor in the Audley and Belle Point Ranch joint embryo programs, Rita SEO 9653 H292 and sired by the popular outcross headliner of the Select Sires roster, Saluda.
- Rita M155 posts a weaning ratio of 120. Rita SEO 9653 H292, the dam of Lot 7 is a power growth, Marb., RE, \$B and \$C daughter of the proven growth sire in the Soaring Eagle of the Ozarks program, Hollywood and stems from the MGL Ranch donor, West Point 9653. The dam of Lot 7 records a WR 1@120 while showing ultrasound ratios IMF 2@119 and REA 2@102.
- Due 8/29/26 to Dandy Acres Skyline.

# Saluda Sisters



Audley Rita M132 / Lot 8A



## Audley Rita M132

Birth Date: 08-25-2024 Cow #\*21205085 Tattoo: M132

#\*Sitz Stellar 726D #\*Mohnen Substantial 272  
 #\*SITZ Pride 200B  
 #\*V A R Discovery 2240  
 #\*Yon Sarah A615  
 #SydGen Enhance #\*SydGen Exceed 3223  
 SydGen Rita 2618  
 #\*G A R Progress  
 G A R 111 Rito 3346

CED	BW	WW	YW	RADG	DMI	YH	SC	HP	CEM	MILK	TEAT	UDDR	FL		
+11	+8	+78	+138	+28	+1.51	+4	+1.60	+13.2	+12	+23	+52	+54	+1.05		
MW	MH	DOC	CLAW	ANGLE	PAP	HS	CW	MARB	RE	FAT					
+92	+3	+26	+36	+36	+2.33	+23	+65	+1.16	+74	+024					
\$AxH	+207	\$AxJ	+184	SM	+78	SW	+73	SF	+112	\$G	+78	\$B	+190	\$C	+324

CED	BW	WW	YW	DMI	YH	SC	DOC	HP	CEM	MILK	MW	MH	CW	NB	REA	FAT	TEND	CLAW	ANGL	HS	PAP
31	48	62	41	59	85	3	42	15	39	75	44	76	33	6	46	88	66	5	3	12	69

Non-Parent Females

Top 10% Angle	Top 15% CEM	Top 20% \$B	Top 25% \$F	Top 25% YW
Top 10% Claw	Top 15% HS	Top 20% \$C	Top 25% \$M	
Top 15% \$AxH	Top 15% SC	Top 20% \$G	Top 25% Marb	
Top 15% CED	Top 20% \$AxJ	Top 20% Doc	Top 25% WW	

• Due 8/30/26 to KC Kingston.



## Audley Rita M195

Birth Date: 09-20-2024 Cow #\*21205106 Tattoo: M195

#\*Sitz Stellar 726D #\*Mohnen Substantial 272  
 #\*SITZ Pride 200B  
 #\*V A R Discovery 2240  
 #\*Yon Sarah A615  
 #SydGen Enhance #\*SydGen Exceed 3223  
 SydGen Rita 2618  
 #\*G A R Progress  
 G A R 111 Rito 3346

CED	BW	WW	YW	RADG	DMI	YH	SC	HP	CEM	MILK	TEAT	UDDR	FL		
+14	-1.5	+65	+123	+28	+1.48	+4	+2.03	+12.6	+11	+39	+40	+41	+1.10		
MW	MH	DOC	CLAW	ANGLE	PAP	HS	CW	MARB	RE	FAT					
+39	+4	+15	+30	+37	-40	-18	+65	+1.37	+82	+027					
\$AxH	+228	\$AxJ	+207	SM	+90	SW	+83	SF	+118	\$G	+89	\$B	+208	\$C	+360

CED	BW	WW	YW	DMI	YH	SC	DOC	HP	CEM	MILK	MW	MH	CW	NB	REA	FAT	TEND	CLAW	ANGL	HS	PAP
20	19	95	57	36	97	5	66	45	70	5	98	91	52	3	46	57	71	2	15	1	6

Non-Parent Females

Top 1% HS	Top 4% CED	Top 10% BW	Top 15% \$G	Top 20% PAP
Top 2% Milk	Top 10% \$AxH	Top 15% \$AxJ	Top 15% \$W	Top 25% CEM
Top 3% Claw	Top 10% \$C	Top 15% \$B	Top 15% Angle	
Top 3% SC	Top 10% \$M	Top 15% \$F	Top 15% Marb	

• Due 10/14/26 to Audley Free Trade.

- Featuring two highlights from the Audley Rita family produced by the \$25,000 Rita 2040 sired by the outcross headliner of the Select Sires roster, Saluda.
- Rita 2040, the dam of Lot 8A and 8B joined the Audley program as a headliner of the 2021 Express Ranches Big Event and is a direct daughter of the record-selling matriarch of the Spruce Mountain Ranch and Express Ranches joint donor programs, Progress 830 by the ORigen leader, Enhance. The dam of Lots 8A and 8B posts a WR 1@100 while showing ultrasound ratios IMF 12@103 and REA 12@102.
- Maternal sisters to the dam of these prospects include: Rita 9204, the

- \$175,000 top-selling female of the 2021 Crazy K Ranch Sale selected by Edisto Pines Farm; Rita 1528, the \$110,000 headlining open heifer of the 2022 Spruce Mountain Sale selected by Optum Angus; Rita 0908, the \$100,000 selection of Deer Valley Farm and Pollard Farms in that offering; Rita 1836, the \$80,000 selection of Katie Colin Farm and Four Sons Farm in the 2022 Big Event; and Rita 81220, the \$60,000 featured aged donor in the 2023 Deer Valley Farm Sale selected by Edisto Pines Farm.
- Maternal sisters to Lots 8A and 8B sold in the 2025 Audley Sale and include: Rita L207 selected by Half Way Broke Angus; Rita L208 selling to Rice Farms; and Rita L152 selected by Glen Valley Farms.

# Isabel Sisters



**Audley Isabel M189 /**  
Lot 9A



**Audley Isabel M151 /**  
Lot 9C



## Audley Isabel M189

Birth Date: 09-19-2024 Cow +\*21205103 Tattoo: M189

#\*GB Fireball 672 +\*G A R Sure Fire 6404  
 +\*G A R Fireproof \*GB Anticipation 432  
 20370357 +\*Chair Rock Sure Fire 6095  
 #\*+G A R Sure Fire  
 +\*Chair Rock Progress 3005

#\*+Basin Payweight 1682 #\*+Basin Payweight 0065  
 +\*Baldrige Isabel E294 21AR O Lass 7017  
 18812459 \*Baldrige Isabel Y69 #\*Styles Upgrade J59  
 +Baldrige Isabel T935

CED	BW	WW	YW	RADG	DMI	YH	SC	HP	CEM	MILK	TEAT	UDDR	FL
+8	-7	+65	+127	+34	+86	+4	-01	+11.0	+10	+35	+41	+36	+1.09
MW	MH	DOC	CLAW	ANGLE	PAP	HS	CW	MARB	RE	FAT			
+61	+6	+20	+40	+39	-61	+54	+63	+1.33	+45	+063			
\$AxH	\$AxJ	\$M	\$W	\$F	\$G	\$B	\$C	\$37					
+151	+106	+70	+74	+125	+80	+206	+337						

CED	BW	WW	YW	DMI	YH	SC	DOC	HP	CEM	MILK	MW	MH	CW	RE	FAT	TEND	CLAW	ANGL	HS	PAP	
89	68	46	9	53	99	95	51	70	72	18	57	34	6	4	69	89	65	12	6	57	27

Non-Parent Females

Top 5% RADG	Top 15% \$B	Top 15% BW	Top 20% \$G
Top 10% \$F	Top 15% \$C	Top 15% Marb	Top 20% Claw
Top 10% Milk	Top 15% Angle	Top 15% PAP	Top 25% DMI



## Audley Isabel M151

Birth Date: 08-30-2024 Cow +\*21207182 Tattoo: M151

#\*GB Fireball 672 +\*G A R Sure Fire 6404  
 \*K A Kindred \*GB Anticipation 432  
 20446645 \*K A Miss High Weigh 862  
 #\*+G A R Sure Fire  
 K A Miss Discovery 5163

#\*+Basin Payweight 1682 #\*+Basin Payweight 0065  
 +\*Baldrige Isabel E294 21AR O Lass 7017  
 18812459 \*Baldrige Isabel Y69 #\*Styles Upgrade J59  
 +Baldrige Isabel T935

CED	BW	WW	YW	RADG	DMI	YH	SC	HP	CEM	MILK	TEAT	UDDR	FL
+9	-8	+68	+124	+28	+91	+0	+1.04	+15.0	+10	+24	+81	+67	+1.05
MW	MH	DOC	CLAW	ANGLE	PAP	HS	CW	MARB	RE	FAT			
+67	+3	+20	+43	+47	+1.18	+35	+49	+1.01	+73	+032			
\$AxH	\$AxJ	\$M	\$W	\$F	\$G	\$B	\$C	\$301					
+189	+156	+81	+67	+100	+70	+170	+301						

CED	BW	WW	YW	DMI	YH	SC	DOC	HP	CEM	MILK	MW	MH	CW	RE	FAT	TEND	CLAW	ANGL	HS	PAP	
38	15	68	36	71	96	37	8	33	77	75	63	70	49	10	34	66	92	13	33	15	57

Non-Parent Females

Top 10% HPreg	Top 15% BW	Top 20% \$M
Top 10% TEAT	Top 20% \$AxH	Top 25% UDDR

• Due 8/30/26 to Dandy Acres Skyline.

• Due 8/29/26 to BNWZ Validity 2491.



## Audley Isabel M184

Birth Date: 09-18-2024 Cow +\*21205102 Tattoo: M184

#\*GB Fireball 672 +\*G A R Sure Fire 6404  
 +\*G A R Fireproof \*GB Anticipation 432  
 20370357 +\*Chair Rock Sure Fire 6095  
 #\*+G A R Sure Fire  
 +\*Chair Rock Progress 3005

#\*+Basin Payweight 1682 #\*+Basin Payweight 0065  
 +\*Baldrige Isabel E294 21AR O Lass 7017  
 18812459 \*Baldrige Isabel Y69 #\*Styles Upgrade J59  
 +Baldrige Isabel T935

CED	BW	WW	YW	RADG	DMI	YH	SC	HP	CEM	MILK	TEAT	UDDR	FL
+8	-6	+67	+124	+33	+73	+1	+73	+12.4	+7	+31	+68	+65	+1.06
MW	MH	DOC	CLAW	ANGLE	PAP	HS	CW	MARB	RE	FAT			
+66	+4	+19	+49	+38	-1.48	+50	+51	+1.28	+55	+034			
\$AxH	\$AxJ	\$M	\$W	\$F	\$G	\$B	\$C	\$313					
+192	+137	+72	+73	+105	+81	+186	+313						

CED	BW	WW	YW	DMI	YH	SC	DOC	HP	CEM	MILK	MW	MH	CW	RE	FAT	TEND	CLAW	ANGL	HS	PAP	
39	19	66	34	43	94	76	72	61	81	37	67	77	39	5	59	58	62	49	9	54	17

Non-Parent Females

Top 10% Angle	Top 15% RADG	Top 20% \$G	Top 20% Milk	Top 25% UDDR
Top 10% PAP	Top 20% \$AxH	Top 20% DMI	Top 25% \$B	
Top 15% BW	Top 20% \$C	Top 20% Marb	Top 25% TEAT	

• Due 8/30/26 to Dandy Acres Skyline.

• Featuring three calving-ease, PAP and Marb. daughters of the prolific former foundation Isabel in the Audley program, Isabel E294 sired by the proven genomic Select Sires roster member, Fireproof and the \$185,000 ST Genetics sire, Kindred.

• Isabel E294, the donor dam of Lots 9A through 9C was selected by Melton Angus in the 2024 Audley Sale and is a direct daughter of the legendary herd sire producing Baldrige Performance Angus and Dixie Valley Ranch female, Isabel Y69 by the foundation female sire, Payweight 1682. The dam of these bred heifers posts a WR 1@101 and a YR 1@108.

• Maternal siblings to Lots 9A through 9C include: the female selling as Lot 22; Isabel K009, the \$20,000 selection of Optum Angus in the first Audley sale; a heifer pregnancy headliner the first Audley Farm LiveOnline sale selling for \$12,000 to Crazy K Ranch; a heifer pregnancy selected by Spruce Mountain Ranch in the first Audley sale; Isabel K137 selling in the 2024 Audley Sale to PWR Angus; Isabel K153 selling in that offering to Express Ranches; Isabel K167 selected in that event by Sissler Knoll Farm; Isabel L156 selling in the 2025 Audley Sale to Belle Point Ranch; Isabel L179, Isabel L175 and Isabel L135 all selling in that offering to ADR Cattle Company; Isabel L138 selling in that same offering to Sions Angus; and Isabel H259 selling in the 2022 Fall Audley LiveOnline Sale to Heart B Hill Farm.

# Rita 1505 Daughters



**Audley Rita M172 /**  
Lot 10A



**Audley Rita M137 /**  
Lot 10B



## Audley Rita M172

Birth Date: 09-15-2024 Cow #\*21205098 Tattoo: M172

\*SG Salvation #\*Baldrige Alternative E125  
 \*\*Riverbend Black Label J1810 #\*MGR JP Rita 7037  
 20342645 +\*E W A 6121 of 3128 Sure Fire #\*G A R Sure Fire  
 +\*E W A 3128 of 9067 Weigh Up

\*DB Iconic G95 #\*Musgrave 316 Stunner  
 \*\*Spruce Mtn Rita 1505 #DB Ms Discovery D13  
 20145335 \*Spruce Mtn Rita K8071 #\*Jindra Acclaim  
 +\*Crazy K Rita 5053

CED	BW	WW	YW	RADG	DMI	YH	SC	HP	CEM	MILK	TEAT	UDDR	FL		
+16	-2.9	+53	+99	+25	+71	+1	+1.19	+14.2	+11	+36	+0.8	+31	+1.08		
MW	MH	DOC	CLAW	ANGLE	PAP	HS	CW	MARB	RE	FAT					
+34	+0	+24	+41	+48	-63	+83	+62	+1.23	+97	+0.76					
\$AxH	+229	\$AxJ	+202	\$M	+77	\$W	+68	\$F	+126	\$G	+81	\$B	+207	\$C	+345

CED	BW	WW	YW	DMI	YH	SC	DOC	HP	CEM	MILK	MW	MH	CW	MB	REA	FAT	TEND	CLAW	ANGL	HS	PAP
1	1	99	80	26	92	28	18	11	66	5	83	85	37	19	18	97	53	12	12	94	13

### Non-Parent Females

Top 1% CED	Top 10% SC	Top 15% HPreg	Top 20% DMI
Top 2% BW	Top 10% SF	Top 15% PAP	Top 20% Marb
Top 4% Milk	Top 15% \$AxJ	Top 20% \$G	Top 25% CEM
Top 10% \$AxH	Top 15% \$B	Top 20% Claw	Top 25% REA

• Due 8/30/26 to PEAK Draft Pick.



## Audley Rita M137

Birth Date: 08-26-2024 Cow #\*21207142 Tattoo: M137

\*K A Kindred #\*GB Fireball 672  
 20446645 \*K A Miss High Weigh 862

\*DB Iconic G95 #\*Musgrave 316 Stunner  
 \*\*Spruce Mtn Rita 1505 #DB Ms Discovery D13  
 20145335 \*Spruce Mtn Rita K8071 #\*Jindra Acclaim  
 +\*Crazy K Rita 5053

CED	BW	WW	YW	RADG	DMI	YH	SC	HP	CEM	MILK	TEAT	UDDR	FL		
+9	-3	+79	+144	+31	+1.49	+5	+1.38	+15.5	+7	+41	+50	+38	+1.06		
MW	MH	DOC	CLAW	ANGLE	PAP	HS	CW	MARB	RE	FAT					
+45	+0	+19	+55	+53	+4.69	+40	+66	+1.88	+78	+0.73					
\$AxH	+261	\$AxJ	+231	\$M	+92	\$W	+102	\$F	+112	\$G	+110	\$B	+223	\$C	+381

CED	BW	WW	YW	DMI	YH	SC	DOC	HP	CEM	MILK	MW	MH	CW	MB	REA	FAT	TEND	CLAW	ANGL	HS	PAP
25	31	41	20	56	86	35	39	19	67	1	89	97	42	1	55	99	93	42	26	20	97

### Non-Parent Females

Top 1% Milk	Top 3% SC	Top 10% \$M	Top 20% SC
Top 2% \$W	Top 3% \$G	Top 10% HPreg	Top 20% YW
Top 2% Marb	Top 10% \$AxJ	Top 20% BW	Top 25% SF
Top 3% \$AxH	Top 10% \$B	Top 20% RADG	Top 25% WW

• Due 10/4/26 to Audley Free Trade.

Owned with Bliss Lane Cattle Company, Berryville, VA

• Selling two exciting calving-ease, Marb., \$M, \$W, \$B and \$C combination daughters of the \$120,000 foundation Rita in the Audley and Bliss Lane Cattle Company programs. Rita 1505 sired by the \$150,000 record-selling Riverbend Ranch and Select Sires feature, Black Label J1810 and the \$185,000 ST Genetics roster member, Kindred.

• Rita 1505, the dam of Lots 10A and 10B is a direct daughter of the \$180,000 power donor in the Spruce Mountain Ranch and Ames Angus Ranch joint embryo programs, Rita K8071 sired by the proven leader of the Genex roster, Iconic.

• Full and maternal sisters to the dam of Lots 10A and 10B include: Rita 0580, the \$280,000 valued half interest selection of Crazy K Ranch as the top-selling female of the first Gobbell G3 Farms sale; Rita 1523, the \$130,000 valued lead-off female of the record-setting 2023 Gobbell G3 Farms Sale selling half interest to Warren G Farms; Rita 3503, the

\$100,000 selection of Express Ranches in the 2024 Spruce Mountain Sale; Rita 3509, the \$50,000 selection of Riverbend Ranch in that offering; Rita 1513, the \$45,000 selection of Pollard Farms in the 2022 Spruce Mountain Sale; Rita 3817, the \$35,000 selection of Brennan Livestock in the 2024 Spruce Mountain Sale; Rita 3545, the \$30,000 selection of Belle Point Ranch in that event; Rita 3025, the \$30,000 selection of Belle Point Ranch in the 2023 Spruce Mountain Sale; an added highlight of the 2022 Spruce Mountain Sale selling to Maplebrook Farms for \$17,500; Rita 1577, selling in the 2023 Spruce Mountain Sale to Express Ranches, Rita 1574 selling in that offering to Riverbend Ranch; and Rita 1586 featured in that event and selling to Pine Tree Ranch.

• Maternal sisters to Lots 10A and 10B include: the pick of the Validity daughters selling to Spruce Mountain Ranch in the 2025 Audley Sale for \$8,500; and a pick of the Gettysburg daughters selling in that offering to Belle Point Ranch for \$7,000.

# Growth & Carcass



EWA 450 of 226 Black Label / Lot 12

## 11 E W A 464 of 264 Winchester 12 E W A 450 of 226 Black Label

Birth Date: 09-06-2024 Cow \*21055838 Tattoo: 464 Birth Date: 08-26-2024 Cow \*21054929 Tattoo: 450

\*Connealy Clarity  
 \*\*Poss Winchester  
 20060473 \*Poss Blueblood 6502

#Cherry Creek Land Grant  
 \*Breshie of Conanga 6988  
 Poss Easy Impact 0119  
 Poss Blueblood 920

\*Yon Top Cut G730  
 \*\*E W A 264 of 909 Top Cut  
 20440212 \*G A R Sure Fire N539

#Spring Cove Reno 4021  
 \*\*Yon Sarah D668  
 #\*G A R Sure Fire  
 \*G A R Prophet 1805

\*SG Salvation  
 \*\*Riverbend Black Label J1810  
 20342645 \*E W A 6121 of 3128 Sure Fire

#\*Baldrige Alternative E125  
 \*\*MGR JP Rita 7037  
 #\*G A R Sure Fire  
 \*E W A 3128 of 9067 Weigh Up

\*Connealy Clarity  
 \*\*E W A 226 of F11 Clarity  
 20434106 \*\*WRCC Blackcap F11

#Cherry Creek Land Grant  
 \*Breshie of Conanga 6988  
 #Jindra Acclaim  
 \*\*EXAR Blackcap 5801

CED	BW	WW	YW	RADG	DMI	YH	SC	HP	CEM	MILK	TEAT	UDDR	FL
+12	-8	+88	+148	+31	+1.18	+4	+90	+15.5	+12	+24	+76	+72	+1.08
MW	MH	DOC	CLAW	ANGLE	PAP	HS	CW	MARB	RE	FAT			
+58	+3	+35	+48	+47	+1.83	+44	+63	+1.41	+1.09	-0.006			
\$AxH	\$AxJ	\$M	\$W	\$F	\$G	\$B	\$C	\$375					
+248	+231	+116	+96	+103	+97	+200	+375						

CED	BW	WW	YW	RADG	DMI	YH	SC	HP	CEM	MILK	TEAT	UDDR	FL
+6	+2.9	+100	+180	+37	+2.08	+1.1	+1.84	+15.7	+7	+26	+48	+59	+1.04
MW	MH	DOC	CLAW	ANGLE	PAP	HS	CW	MARB	RE	FAT			
+142	+1.4	+33	+48	+45	+0.2	+67	+104	+96	+1.07	+0.37			
\$AxH	\$AxJ	\$M	\$W	\$F	\$G	\$B	\$C	\$373					
+220	+237	+72	+89	+160	+71	+232	+373						

GED	BW	WW	YW	DMI	YH	SC	DOC	HP	CEM	MILK	MW	MH	CW	MB	REA	FAT	TEND	CLAW	ANGL	HS	PAP
6	5	7	21	39	63	22	2	1	68	43	69	68	20	8	15	52	74	53	51	28	56

GED	BW	WW	YW	DMI	YH	SC	DOC	HP	CEM	MILK	MW	MH	CW	MB	REA	FAT	TEND	CLAW	ANGL	HS	PAP
27	42	4	1	94	15	2	2	4	61	49	2	2	1	24	17	64	24	23	28	72	12

Non-Parent Females

Top 1% \$M	Top 5% \$AxH	Top 10% HPreg	Top 15% CEM	Top 15% UDDER
Top 1% Doc	Top 10% \$AxJ	Top 10% WW	Top 15% Marb	Top 15% YW
Top 3% \$C	Top 10% \$G	Top 15% \$B	Top 15% REA	Top 20% RADG
Top 3% \$W	Top 10% CED	Top 15% BW	Top 15% TEAT	Top 25% Fat

Non-Parent Females

Top 1% \$F	Top 1% YW	Top 4% \$B	Top 5% HPreg	Top 10% \$W
Top 1% CWT	Top 2% Doc	Top 4% \$C	Top 5% SC	Top 15% REA
Top 1% RADG	Top 2% WW	Top 5% \$AxJ	Top 10% \$AxH	Top 25% PAP

- Owned by Edgewood Angus, West Point, VA
- EWA 464 is an outstanding calving-ease, Marb., RE, \$M, \$W, \$B and \$C performance heifer from the top of the Edgewood Angus replacement heifers and stems from a proven and productive dam, EWA 264 sired by the proven ST Genetics roster member, Winchester.
- EWA 264, the dam of Lot 11 is a second-generation Edgewood Angus female and a direct daughter of the foundation EWA donor, Sure Fire N539 sired by the proven \$M leader of the Select Sires roster, Top Cut.
- Due 9/1/26 to GAR Wallace.

- Owned by Edgewood Angus, West Point, VA
- EWA 450 is a power growth, PAP, CW, RE, \$B and \$C prospect produced by a featured and proven highlight of the Edgewood Angus fall calving program, EWA 226 sired by the \$150,000 record-selling headliner of the Riverbend Ranch and Select Sires rosters, Black Label J1810.
- EWA 450 posts ultrasound ratios IMF 105 and REA 100. EWA 226, the dam of Lot 12 is a direct daughter of the Bateman Farms female, Blackcap F11 sired by the now-deceased ST Genetics roster member, Clarity. The dam of Lot 12 records a WR 2@108 and a YR 1@111 while carrying ultrasound ratios IMF 2@101 and REA 2@99.
- Due 8/25/26 to 44 Valor 3387.

# Black Label Daughters



Audley Rita M153 / Lot 14

**13**

## Audley Lucy M181

Birth Date: 09-17-2024

Cow **+\*21205101**

Tattoo: M181

\*SG Salvation  
**\*Rivbernd Black Label J1810**  
 20342645 +\*E W A 6121 of 3128 Sure Fire

#+\*Baldrige Alternative E125  
 +\*MGR JP Rita 7037  
 #\*G A R Sure Fire  
 +\*E W A 3128 of 9067 Weigh Up

#\*G A R Home Town  
**\*EXAR Lucy 1906**  
 20112781 +\*Crazy K Lucy 813F

#+\*G A R Ashland  
 +\*Chair Rock Sure Fire 6095  
 #\*Basin Payweight 1682  
 +\*EXAR Lucy 4855

CED	BW	WW	YW	RADG	DMI	YH	SC	HP	CEM	MILK	TEAT	UDDR	FL								
<b>+8</b>	<b>+3.9</b>	<b>+92</b>	<b>+167</b>	<b>+36</b>	<b>+1.63</b>	<b>+7</b>	<b>+1.93</b>	<b>+12.4</b>	<b>+7</b>	<b>+28</b>	<b>+15</b>	<b>+25</b>	<b>+99</b>								
MW	MH	DOC	CLAW	ANGLE	PAP	HS	CW	MARB	RE	FAT											
<b>+121</b>	<b>+1.0</b>	<b>+29</b>	<b>+51</b>	<b>+49</b>	<b>+1.51</b>	<b>+45</b>	<b>+80</b>	<b>+.84</b>	<b>+1.04</b>	<b>+0.26</b>											
\$AxH <b>+208</b>	\$AxJ <b>+211</b>	SM <b>+53</b>	SW <b>+81</b>	SF <b>+130</b>	SG <b>+66</b>	SB <b>+197</b>	SC <b>+309</b>														
CED	BW	WW	YW	DMI	YH	SC	DOC	HP	CEM	MILK	MW	MH	CW	MB	REA	FAT	TEND	CLAW	ANGL	HS	PAP
<b>52</b>	<b>88</b>	<b>12</b>	<b>2</b>	<b>90</b>	<b>47</b>	<b>2</b>	<b>62</b>	<b>86</b>	<b>64</b>	<b>5</b>	<b>9</b>	<b>6</b>	<b>45</b>	<b>19</b>	<b>44</b>	<b>92</b>	<b>49</b>	<b>42</b>	<b>36</b>	<b>62</b>	

Non-Parent Females

Top 2% RADG	Top 5% WW	Top 10% Doc	Top 20% \$B	Top 25% \$C
Top 3% YW	Top 10% \$F	Top 15% \$AxH	Top 20% \$W	
Top 4% SC	Top 10% CWT	Top 15% \$AxJ	Top 20% REA	

**14**

## Audley Rita M153

Birth Date: 09-01-2024

Cow **+\*21205091**

Tattoo: M153

\*SG Salvation  
**\*Rivbernd Black Label J1810**  
 20342645 +\*E W A 6121 of 3128 Sure Fire

#+\*Baldrige Alternative E125  
 +\*MGR JP Rita 7037  
 #\*G A R Sure Fire  
 +\*E W A 3128 of 9067 Weigh Up

\*T C A Eastwood  
**\*EPF Rita I323**  
 19994241 +\*Black Gold Rita K6009

#\*Jindra Acclaim  
 \*T C A Marquis Treasure 711  
 #\*V A R Discovery 2240  
 +\*G A R 5050 New Design 2553

CED	BW	WW	YW	RADG	DMI	YH	SC	HP	CEM	MILK	TEAT	UDDR	FL								
<b>+10</b>	<b>+2</b>	<b>+65</b>	<b>+126</b>	<b>+31</b>	<b>+1.36</b>	<b>+4</b>	<b>+44</b>	<b>+11.7</b>	<b>+5</b>	<b>+35</b>	<b>+16</b>	<b>+37</b>	<b>+97</b>								
MW	MH	DOC	CLAW	ANGLE	PAP	HS	CW	MARB	RE	FAT											
<b>+62</b>	<b>+6</b>	<b>+18</b>	<b>+.55</b>	<b>+48</b>	<b>+1.51</b>	<b>+34</b>	<b>+62</b>	<b>+1.13</b>	<b>+.64</b>	<b>+0.58</b>											
\$AxH <b>+180</b>	\$AxJ <b>+144</b>	SM <b>+49</b>	SW <b>+72</b>	SF <b>+113</b>	SG <b>+73</b>	SB <b>+186</b>	SC <b>+290</b>														
CED	BW	WW	YW	DMI	YH	SC	DOC	HP	CEM	MILK	MW	MH	CW	MB	REA	FAT	TEND	CLAW	ANGL	HS	PAP
<b>12</b>	<b>17</b>	<b>90</b>	<b>54</b>	<b>54</b>	<b>88</b>	<b>82</b>	<b>51</b>	<b>43</b>	<b>97</b>	<b>5</b>	<b>80</b>	<b>64</b>	<b>39</b>	<b>13</b>	<b>71</b>	<b>95</b>	<b>81</b>	<b>76</b>	<b>39</b>	<b>30</b>	<b>39</b>

Non-Parent Females

Top 10% Milk	Top 20% CED	Top 25% \$B	Top 25% BW	Top 25% RADG
Top 20% \$F	Top 25% \$AxH	Top 25% \$G	Top 25% Marb	

- Lucy M181 is a growth and RE prospect produced by a young donor in the Audley donor program, Lucy 1906 sired by the \$150,000 multi-trait feature, Black Label J1810.
- Lucy 1906, the dam of Lot 13 blends the proven multi-trait female sire, Home Town with a former Express Ranches headliner, Lucy 813F who shows an ultrasound IMF ratio 1@104.
- Due 10/14/26 to Audley Free Trade.
- Rita M153 is a calving-ease and Marb. daughter of the \$35,000 foundation Rita in the Audley donor program Rita I323 sired by the proven feature of the Select Sires roster, Black Label J1810.
- Rita I323, the dam of Lot 14 is a direct daughter of the \$200,000 valued now-deceased Edisto Pines Farm and Spruce Mountain Ranch donor, Rita K6009 sired by the outcross sire, Eastwood. The dam of Lot 14 records a WR 1@109. Free Trade, the Audley herd sire whose service highlights the bred heifer division is a maternal brother to Lot 14.
- Due 8/30/26 to PEAK Draft Pick.

# Evas Sisters



**Audley Evas M197 /**  
Lot 15A

**15A**

## Audley Evas M197

Birth Date: 09-22-2024 Cow **+\*21205108** Tattoo: M197

#\*Tehama Patriarch F028  
\*Virginia Tech Statesman  
20085208 +\*Vpi 310A Rita 9G6 Et

#\*S S Niagara Z29  
Tehama Elite Blackbird D826  
#\*Ellingson Homestead 6030  
AED Rita 310A

\*EXAR Stallion 7986  
\*\*EXAR Evas 97919  
19448154 +\*EXAR Evas 6744

#\*EXAR Stud 4658B  
\*EXAR Blackcap 3385  
#\*V A R Generation 2100  
+\*EXAR Evas 2891

CED	BW	WW	YW	RADG	DMI	YH	SC	HP	CEM	MILK	TEAT	UDDR	FL								
<b>+11</b>	<b>+8</b>	<b>+81</b>	<b>+153</b>	<b>+35</b>	<b>+1.73</b>	<b>+9</b>	<b>+1.48</b>	<b>+13.0</b>	<b>+18</b>	<b>+30</b>	<b>+52</b>	<b>+33</b>	<b>+96</b>								
MW	MH	DOC	CLAW	ANGLE	PAP	HS	CW	MARB	RE	FAT											
<b>+75</b>	<b>+6</b>	<b>+17</b>	<b>+53</b>	<b>+58</b>	<b>+52</b>	<b>+37</b>	<b>+76</b>	<b>+1.28</b>	<b>+81</b>	<b>+0.49</b>											
\$AxH	+194	\$AxJ	+179	\$M	+66	\$W	+85	\$F	+125	\$G	+83	\$B	+208	\$C	+336						
<b>35</b>	<b>78</b>	<b>10</b>	<b>1</b>	<b>98</b>	<b>12</b>	<b>21</b>	<b>53</b>	<b>17</b>	<b>6</b>	<b>17</b>	<b>46</b>	<b>33</b>	<b>1</b>	<b>5</b>	<b>8</b>	<b>70</b>	<b>63</b>	<b>66</b>	<b>87</b>	<b>20</b>	<b>51</b>

*Non-Parent Females*

Top 1% CEM	Top 15% \$B	Top 15% CWT	Top 20% \$G
Top 4% RADG	Top 15% \$C	Top 15% SC	Top 20% Marb
Top 10% \$F	Top 15% \$W	Top 20% \$AxH	Top 20% WW
Top 10% YW	Top 15% CED	Top 20% \$AxJ	Top 25% Milk

• Due 11/3/26 to Audley Free Trade.

**15C**

## Audley Evas M173

Birth Date: 09-15-2024 Cow **+\*21205099** Tattoo: M173

#\*Tehama Patriarch F028  
\*Virginia Tech Statesman  
20085208 +\*Vpi 310A Rita 9G6 Et

#\*S S Niagara Z29  
Tehama Elite Blackbird D826  
#\*Ellingson Homestead 6030  
AED Rita 310A

\*EXAR Stallion 7986  
\*\*EXAR Evas 97919  
19448154 +\*EXAR Evas 6744

#\*EXAR Stud 4658B  
\*EXAR Blackcap 3385  
#\*V A R Generation 2100  
+\*EXAR Evas 2891

CED	BW	WW	YW	RADG	DMI	YH	SC	HP	CEM	MILK	TEAT	UDDR	FL								
<b>+11</b>	<b>-7</b>	<b>+74</b>	<b>+134</b>	<b>+29</b>	<b>+1.50</b>	<b>+3</b>	<b>+57</b>	<b>+12.1</b>	<b>+15</b>	<b>+23</b>	<b>+74</b>	<b>+48</b>	<b>+1.01</b>								
MW	MH	DOC	CLAW	ANGLE	PAP	HS	CW	MARB	RE	FAT											
<b>+60</b>	<b>+3</b>	<b>+14</b>	<b>+57</b>	<b>+59</b>	<b>-39</b>	<b>+49</b>	<b>+66</b>	<b>+92</b>	<b>+1.17</b>	<b>+0.38</b>											
\$AxH	+208	\$AxJ	+198	\$M	+68	\$W	+74	\$F	+118	\$G	+71	\$B	+189	\$C	+313						
<b>26</b>	<b>36</b>	<b>17</b>	<b>19</b>	<b>78</b>	<b>55</b>	<b>68</b>	<b>62</b>	<b>43</b>	<b>12</b>	<b>88</b>	<b>60</b>	<b>53</b>	<b>18</b>	<b>19</b>	<b>8</b>	<b>83</b>	<b>6</b>	<b>61</b>	<b>86</b>	<b>40</b>	<b>30</b>

*Non-Parent Females*

Top 3% CEM	Top 15% \$AxJ	Top 15% CED	Top 20% \$C
Top 10% REA	Top 15% \$F	Top 15% TEAT	Top 20% PAP
Top 15% \$AxH	Top 15% BW	Top 20% \$B	

• Due 11/3/26 to Audley Free Trade.

**15B**

## Audley Evas M191

Birth Date: 09-20-2024 Cow **+\*21205105** Tattoo: M191

#\*Tehama Patriarch F028  
\*Virginia Tech Statesman  
20085208 +\*Vpi 310A Rita 9G6 Et

#\*S S Niagara Z29  
Tehama Elite Blackbird D826  
#\*Ellingson Homestead 6030  
AED Rita 310A

\*EXAR Stallion 7986  
\*\*EXAR Evas 97919  
19448154 +\*EXAR Evas 6744

#\*EXAR Stud 4658B  
\*EXAR Blackcap 3385  
#\*V A R Generation 2100  
+\*EXAR Evas 2891

CED	BW	WW	YW	RADG	DMI	YH	SC	HP	CEM	MILK	TEAT	UDDR	FL								
<b>+16</b>	<b>-9</b>	<b>+70</b>	<b>+136</b>	<b>+33</b>	<b>+1.53</b>	<b>+7</b>	<b>+22</b>	<b>+15.7</b>	<b>+17</b>	<b>+25</b>	<b>+68</b>	<b>+44</b>	<b>+1.01</b>								
MW	MH	DOC	CLAW	ANGLE	PAP	HS	CW	MARB	RE	FAT											
<b>+90</b>	<b>+7</b>	<b>+22</b>	<b>+58</b>	<b>+53</b>	<b>-96</b>	<b>+66</b>	<b>+70</b>	<b>+1.30</b>	<b>+1.05</b>	<b>+0.93</b>											
\$AxH	+231	\$AxJ	+229	\$M	+63	\$W	+65	\$F	+131	\$G	+84	\$B	+216	\$C	+343						
<b>1</b>	<b>4</b>	<b>63</b>	<b>24</b>	<b>64</b>	<b>43</b>	<b>82</b>	<b>9</b>	<b>13</b>	<b>17</b>	<b>63</b>	<b>50</b>	<b>40</b>	<b>26</b>	<b>4</b>	<b>15</b>	<b>100</b>	<b>9</b>	<b>60</b>	<b>43</b>	<b>72</b>	<b>20</b>

*Non-Parent Females*

Top 1% CED	Top 10% \$AxJ	Top 10% BW	Top 20% Marb	Top 25% YW
Top 1% CEM	Top 10% \$B	Top 10% RADG	Top 20% REA	
Top 5% HPreg	Top 10% \$C	Top 15% \$G	Top 20% TEAT	
Top 10% \$AxH	Top 10% \$F	Top 15% PAP	Top 25% CWT	

• Due 10/9/26 to Audley Free Trade.

**Featuring three sensational low-birth, PAP and RE daughters of the \$80,000 valued former headliner of the Audley and Express Ranches joint embryo programs, Evas 97919 sired by the proven phenotype leader of the Deer Valley Farm and Knoll Crest Farm herd sire rosters, Statesman.**

• Evas 97919, the dam of Lots 15A through 15C is featured in the Legacy Angus program and is a proven and productive donor who blends the featured Express Ranches female sire, Stallion with a daughter of the balanced-trait sire, Generation. The dam of Lots 15A through 15C posts a BR 2@94 and a WR 2@99 while showing ultrasound ratios IMF 7@120 and REA 7@101. Evas L132, a maternal sister to Lots 15A through 15C was selected by Murphy Farms in the 2025 Audley Sale.

# Performance Genetics



**Audley Rita M105 / Lot 16**

**16**

## Audley Rita M105

Birth Date: 08-08-2024 Cow \*21205081 Tattoo: M105

#\*Sitz Resilient 10208 #\*Sitz Stellar 726D  
 \*Connealy Craftsman #\*Sitz Miss Burgess 1856  
 20132505 #\*Black Cathy of Conanga 8521 \*Connealy Niobrara 5451  
 Black Carla of Conanga 450

+\*Yon Top Cut G730 #\*Spring Cove Reno 4021  
 \*Audley Rita K197 #\*Yon Sarah D668  
 20576804 #\*Spruce Mtn Rita 308 #\*Rito 9Q13 of Rita 5F56 GHM  
 #\*EF Rita 7331

CED	BW	WW	YW	RADG	DMI	YH	SC	HP	CEM	MILK	TEAT	UDDR	FL								
+10	+4	+69	+119	+24	+1.43	+2	+4.7	+13.6	+11	+32	+7.0	+6.5	+9.7								
MW	MH	DOC	CLAW	ANGLE	PAP	HS	CW	MARB	RE	FAT											
+34	+2	+12	+3.3	+4.0	-1.11	+1.7	+5.0	+1.06	+1.03	-0.07											
\$AxH	\$AxJ	\$M	\$W	\$F	\$G	\$B	\$C														
+187	+172	+92	+82	+89	+79	+169	+311														
CED	BW	WW	YW	DMI	YH	SC	DOC	HP	CEM	MILK	MW	MH	CW	MB	REA	FAT	TEND	CLAW	ANGL	HS	PAP
17	16	82	85	42	90	53	73	28	67	37	99	90	94	17	11	36	44	8	34	9	10

**Non-Parent Females**

Top 5% \$M	Top 15% TEAT	Top 20% \$W	Top 20% REA	Top 25% Fat
Top 5% Claw	Top 20% \$AxH	Top 20% Angle	Top 20% UDDR	Top 25% HPreg
Top 10% HS	Top 20% \$C	Top 20% CED	Top 25% \$AxJ	Top 25% \$AxH
Top 10% PAP	Top 20% \$G	Top 20% Milk	Top 25% CEM	

- Rita M105 is a low-birth, PAP, carcass, \$M and \$W prospect produced by a first calf heifer in the Audley program, Rita K197 and sired by the record-selling ST Genetics and Select Sires highlight, Craftsman.
- Rita M105 posts a birth ratio of 99 and a weaning ratio of 104. The first calf heifer dam of Lot 16 is a proven and productive Audley donor, Rita 308 sired by the proven \$M leader of the Select Sires roster, Top Cut.
- Due 8/29/26 to BNWZ Validity 2491.



**Audley Blackbird M108 / Lot 18**



**EWA 4128 of 051 Craftsman / Lot 17**

## **17** E W A 4128 of 051 Craftsman

Birth Date: 10-08-2024 Cow \*21132276 Tattoo: 4128

#\*Sitz Resilient 10208 #\*Sitz Stellar 726D  
 \*Connealy Craftsman #\*Sitz Miss Burgess 1856  
 20132505 #\*Black Cathy of Conanga 8521 \*Connealy Niobrara 5451  
 Black Carla of Conanga 450

#\*S A V Rainfall 6846 #\*Coleman Charlo 0256  
 #\*E W A 051 of 7145 Rainfall #\*S A V Blackcap May 4136  
 19867635 #\*E W A 7145 of 471 Prospect #\*E W A Prospect 501  
 #\*E W A 471 of 968 Progress

CED	BW	WW	YW	RADG	DMI	YH	SC	HP	CEM	MILK	TEAT	UDDR	FL								
+4	+6	+67	+116	+26	+9.2	+0	+0.1	+9.3	+7	+33	+6.1	+4.5	+9.8								
MW	MH	DOC	CLAW	ANGLE	PAP	HS	CW	MARB	RE	FAT											
+13	+0	+23	+3.0	+3.6	+2.9	+4.3	+4.1	+1.23	+7.8	+0.41											
\$AxH	\$AxJ	\$M	\$W	\$F	\$G	\$B	\$C														
+179	+144	+93	+83	+80	+81	+161	+302														
CED	BW	WW	YW	DMI	YH	SC	DOC	HP	CEM	MILK	MW	MH	CW	MB	REA	FAT	TEND	CLAW	ANGL	HS	PAP
30	22	79	74	6	98	90	53	73	58	34	100	97	95	11	37	76	26	4	12	44	38

**Non-Parent Females**

Top 2% Claw	Top 10% Angle	Top 15% \$W	Top 20% Marb
Top 10% \$M	Top 10% Milk	Top 20% \$G	Top 25% \$AxH

- Owned by Edgewood Angus, West Point, VA**
- EWA 4128 is a low-birth, PAP, Marb. and \$M female produced by fifth-generation Edgewood Angus female, EWA 051 sired by Craftsman.
  - EWA 4128 posts a birth ratio of 99 and a weaning ratio of 102 while showing an ultrasound IMF ratio of 120. EWA 051, the dam of Lot 17 is a direct daughter of the \$1 million producer and former Edgewood Angus headliner, EWA 7145 sired by Rainfall. The dam of Lot 17 records a WR 2@103 and an IMF ratio 2@107.
  - Due 8/25/26 to Poss Pursuit.

## **18** Audley Blackbird M108

Birth Date: 08-17-2024 Cow \*21531095 Tattoo: M108

#\*GB Fireball 672 #\*G A R Sure Fire 6404  
 #\*V A R Fire Line 2667 #\*GB Anticipation 432  
 20518450 #\*Vintage Rita 8089 #\*Vintage Commander 4152  
 #\*SJH Ten X of 6108 4715

#\*HPCA Veracious #\*Mill Brae Identified 4031  
 #\*AAA Blackbird 2203 #\*H P C A Sunrise A246  
 20460680 #\*Spruce Mtn Blackbird 0558 #\*S S Enforcer E812  
 #\*Spruce Mtn Blackbird 8566

CED	BW	WW	YW	RADG	DMI	YH	SC	HP	CEM	MILK	TEAT	UDDR	FL								
+3	+3.6	+97	+176	+36	+2.31	+8	+1.58	+10.8	+12	+23	+16	+25	+9.4								
MW	MH	DOC	CLAW	ANGLE	PAP	HS	CW	MARB	RE	FAT											
+104	+9	+27	+5.4	+5.0	+1.38	+5.9	+8.7	+1.40	+9.9	+0.71											
\$AxH	\$AxJ	\$M	\$W	\$F	\$G	\$B	\$C														
+238	+233	+57	+85	+136	+90	+226	+350														
CED	BW	WW	YW	DMI	YH	SC	DOC	HP	CEM	MILK	MW	MH	CW	MB	REA	FAT	TEND	CLAW	ANGL	HS	PAP
96	99	7	2	92	56	24	10	73	20	78	28	35	13	6	38	95	91	84	63	61	54

**Non-Parent Females**

Top 1% YW	Top 5% \$F	Top 10% \$C	Top 15% Doc
Top 2% RADG	Top 10% \$AxH	Top 15% \$G	Top 15% Marb
Top 2% WW	Top 10% \$AxJ	Top 15% \$W	Top 15% SC
Top 4% CWT	Top 10% \$B	Top 15% CEM	Top 25% REA

- Blackbird M108 is a growth, CW, Marb., \$W, \$B and \$C combination prospect produced by a first calf heifer in the Audley program.
- Blackbird M108 records a weaning ratio of 113. Blackbird 2203, the first calf heifer dam of Lot 18 is a daughter of Blackbird 0558 sired by Veracious.
- Due 11/3/26 to Audley Free Trade.



# Multi-Trait Females



**Audley Isabel K076 /**  
Lot 22



**EWA 318 of 010 Elevate /**  
Lot 23

**22**

## Audley Isabel K076

Birth Date: 02-26-2022 Cow **\*\*20356214** Tattoo: K076

#SydGen Enhance #SydGen Exceed 3223  
**#\*S S Enforcer E812** SydGen Rita 2618  
 19274932 #S S Miss Daybreak K011 3K17 S S Daybreak K011  
 S S Miss Incentive X19

#\*\*Basin Payweight 1682 #\*\*Basin Payweight 006S  
**+\*Baldrige Isabel E294** 21AR O Lass 7017  
 18812459 \*Baldrige Isabel Y69 #\*Styles Upgrade J59  
 +Baldrige Isabel T935

CED	BW	WW	YW	RADG	DMI	YH	SC	HP	CEM	MILK	TEAT	UDDR	FL
<b>+4</b>	<b>+3</b>	<b>+76</b>	<b>+136</b>	<b>+30</b>	<b>+1.10</b>	<b>+5</b>	<b>+1.29</b>	<b>+12.9</b>	<b>+5</b>	<b>+28</b>	<b>+51</b>	<b>+60</b>	<b>+1.14</b>
MW	MH	DOC	CLAW	ANGLE	PAP	HS	CW	MARB	RE	FAT			
<b>+44</b>	<b>+3</b>	<b>+21</b>	<b>+48</b>	<b>+49</b>	<b>+1.42</b>	<b>+97</b>	<b>+55</b>	<b>+80</b>	<b>+82</b>	<b>+073</b>			

\$AxH	<b>+159</b>	\$AxJ	<b>+157</b>	\$M	<b>+94</b>	\$W	<b>+84</b>	\$F	<b>+102</b>	\$G	<b>+58</b>	\$B	<b>+160</b>	\$C	<b>+302</b>							
	<b>59</b>	<b>35</b>	<b>42</b>	<b>35</b>	<b>26</b>	<b>67</b>	<b>58</b>	<b>42</b>	<b>53</b>	<b>79</b>	<b>49</b>	<b>87</b>	<b>76</b>	<b>41</b>	<b>47</b>	<b>29</b>	<b>91</b>	<b>20</b>	<b>49</b>	<b>52</b>	<b>97</b>	<b>53</b>

*Proven Females*

Top 4% \$M	Top 15% \$AxH	Top 15% FL	Top 20% REA
Top 10% \$W	Top 15% \$AxJ	Top 15% WW	Top 25% HPreg
Top 10% RADG	Top 15% \$C	Top 15% YW	Top 25% SC

- Isabel K076 is a direct daughter of the former foundation Isabel in the Audley program, Isabel E294 sired by the proven Spruce Mountain Ranch, Baldrige Performance Angus and Conover Family headliner, Enforcer.
- Isabel K076 posts a WR 2@99 and a YR 1@103 while carrying an ultrasound REA ratio 1@107. Full and maternal siblings to Lots 9A through 9C include: the females selling as Lots 9A through 9C; Isabel K009, the \$20,000 selection of Optum Angus in the first Audley sale; a heifer pregnancy headliner the first Audley Farm LiveOnline sale selling for \$12,000 to Crazy K Ranch; a heifer pregnancy selected by Spruce Mountain Ranch in the first Audley sale; Isabel K137 selling in the 2024 Audley Sale to PWR Angus; Isabel K153 selling in that offering to Express Ranches; Isabel K167 selected in that event by Sissler Knoll Farm; Isabel L156 selling in the 2025 Audley Sale to Belle Point Ranch; Isabel L179, Isabel L175 and Isabel L135 all selling in that offering to ADR Cattle Company; Isabel L138 selling in that same offering to Sions Angus; and Isabel H259 selling in the 2022 Fall Audley LiveOnline Sale to Heart B Hill Farm.
- Has a 1/25/26 heifer calf, Lot 22A, by Ellingson Progressive, tattoo P036.
- Bred 4/9/26 to YON Southern Rock.

**23**

## E W A 318 of 010 Elevate

Birth Date: 08-20-2023 Cow **\*20825242** Tattoo: 318

+\*Yon Top Cut G730 #\*Spring Cove Reno 4021  
**+\*E W A Elevate 1166** +\*Yon Sarah D668  
 20225379 \*E W A 974 of 290 Tahoe #\*\*Tehama Tahoe B767  
 #Edgewood 290 of 892 NDay454

#\*S A V Rainfall 6846 #\*\*Coleman Charlo 0256  
**#\*E W A 010 of 8154 Rainfall** \*S A V Blackcap May 4136  
 19867428 \*E W A 8154 of 531 Method \*G A R Method  
 +\*EWA GLC 531 of 128 Weigh Up

CED	BW	WW	YW	RADG	DMI	YH	SC	HP	CEM	MILK	TEAT	UDDR	FL
<b>+6</b>	<b>+1.3</b>	<b>+86</b>	<b>+147</b>	<b>+30</b>	<b>+1.11</b>	<b>+4</b>	<b>+96</b>	<b>+11.9</b>	<b>+9</b>	<b>+37</b>	<b>+60</b>	<b>+52</b>	<b>+1.22</b>
MW	MH	DOC	CLAW	ANGLE	PAP	HS	CW	MARB	RE	FAT			
<b>+78</b>	<b>+5</b>	<b>+26</b>	<b>+39</b>	<b>+40</b>	<b>+98</b>	<b>+64</b>	<b>+66</b>	<b>+1.06</b>	<b>+99</b>	<b>+056</b>			

\$AxH	<b>+217</b>	\$AxJ	<b>+207</b>	\$M	<b>+99</b>	\$W	<b>+101</b>	\$F	<b>+115</b>	\$G	<b>+74</b>	\$B	<b>+189</b>	\$C	<b>+344</b>							
	<b>22</b>	<b>70</b>	<b>5</b>	<b>10</b>	<b>77</b>	<b>48</b>	<b>42</b>	<b>23</b>	<b>39</b>	<b>33</b>	<b>2</b>	<b>35</b>	<b>41</b>	<b>5</b>	<b>26</b>	<b>6</b>	<b>57</b>	<b>83</b>	<b>20</b>	<b>46</b>	<b>83</b>	<b>53</b>

*Proven Females*

Top 1% \$W	Top 3% \$AxJ	Top 10% \$B	Top 10% RADG	Top 15% CWT
Top 2% \$M	Top 3% \$C	Top 10% \$G	Top 10% REA	Top 15% Doc
Top 2% FL	Top 4% Milk	Top 10% Angle	Top 10% YW	Top 15% Marb
Top 3% \$AxH	Top 4% WW	Top 10% Claw	Top 15% \$F	

- Owned by Edgewood Angus, West Point, VA
- EWA 318 is an outcross growth, PAP, \$M, \$W and \$C female produced by the third-generation Edgewood Angus highlight, EWA 010 and sired by the proven Edgewood Angus and Select Sires roster member, Elevate.
- EWA 318 posts a WR 1@105, EWA 010, the dam of Lot 23 blends the proven female sires Rainfall and Method and records a WR 3@105 and a YR 3@106 while carrying an ultrasound REA ratio 3@103.
- Due 8/23/26 to Poss Pursuit.

# Performance Pairs



**EWA 558 of 3161  
Powercat /  
Lot 24A**



**E W A 3161 of 9143 Veracious / Lot 24**

## 24 E W A 3161 of 9143 Veracious

Birth Date: 10-11-2023 Cow #\*20873762 Tattoo: 3161

#\*Mill Brae Identified 4031 #\*Koupals B&B Identity  
 \*\*HPCA Veracious #\*Mill Brae Pro Blackcap 1092  
 19699322 +\*H P C A Sunrise A246 #\*\*G A R Sunrise  
 +\*H P C A Prophet A3

#\*E W A Peyton 642 #\*Quaker Hill Manning 4EX9  
 +\*E W A 9143 of 714 Peyton #\*E W A 444 of 968 Progress  
 19643623 \*E W A 714 of 3128 Fortress #\*\*K C F Bennett Fortress  
 +\*E W A 3128 of 9067 Weigh Up

CED	BW	WW	YW	RADG	DMI	YH	SC	HP	CEM	MILK	TEAT	UDDR	FL
+7	+3.3	+102	+173	+34	+1.58	+1.4	+8.3	+10.4	+9	+28	+22	+31	+86

MW	MH	DOC	CLAW	ANGLE	PAP	HS	CW	MARB	RE	FAT
+122	+1.6	+17	+34	+39	+3.79	+5.5	+80	+1.18	+1.12	-0.16

\$AxH	+193	\$AxJ	+236	\$M	+52	\$W	+97	\$F	+121	\$G	+87	\$B	+209	\$C	+323
-------	------	-------	------	-----	-----	-----	-----	-----	------	-----	-----	-----	------	-----	------

CED	BW	WW	YW	DMI	YH	SC	DOC	HP	CEM	MILK	MW	MH	CW	RE	FAT						
31	63	4	9	81	5	53	39	73	50	26	10	2	20	29	17	30	98	7	15	65	96

### Proven Females

Top 1% \$AxJ	Top 2% CWT	Top 4% REA	Top 10% \$F
Top 1% \$W	Top 2% RADG	Top 5% \$C	Top 10% Angle
Top 1% WW	Top 3% \$B	Top 5% \$G	Top 10% Marb
Top 1% YW	Top 3% Claw	Top 10% \$AxH	Top 15% Fat

Owned by Edgewood Angus, West Point, VA

• EWA 3161 is a tremendous high growth, claw, angle, carcass, \$W and \$B first calf heifer produced by a fourth-generation female bred in the Edgewood Angus program, EWA 9143 and sired by Veracious.

• EWA 3161 posts a weaning ratio of 103 and a yearling ratio of 103 while carrying an ultrasound IMF ratio of 101. EWA 9143, the dam of Lot 24 blends the proven Edgewood Angus and Select Sires roster member, Peyton with a direct daughter of the \$100,000 De Su Angus headliner, EWA 3128 by the female sire, Fortress. The dam of Lot 24 shows an ultrasound REA ratio 8@102.

• Has a 9/5/25 heifer calf, Lot 24A, by GAR Powercat.  
 • Due 8/24/26 to GAR Acceleration.

## 25 Audley Jilt K071

Birth Date: 02-20-2022 Cow #\*20339862 Tattoo: K071

#\*Mill Brae Identified 4031 #\*Koupals B&B Identity  
 \*\*HPCA Veracious #\*Mill Brae Pro Blackcap 1092  
 19699322 +\*H P C A Sunrise A246 #\*\*G A R Sunrise  
 +\*H P C A Prophet A3

#\*V A R Index 3282 #+G A R Ingenuity  
 \*Audley Jilt E084 #\*Sandpoint Blackbird 8809  
 19164103 44 Jilt 4408 #\*V A R Discovery 2240  
 44 Jilt Z246

CED	BW	WW	YW	RADG	DMI	YH	SC	HP	CEM	MILK	TEAT	UDDR	FL
+9	+9	+66	+111	+27	+52	+3	-27	+9.7	+9	+25	+68	+60	+1.09

MW	MH	DOC	CLAW	ANGLE	PAP	HS	CW	MARB	RE	FAT
+41	+4	+6	+40	+52	+4.14	+39	+52	+1.18	+1.38	+0.25

\$AxH	+219	\$AxJ	+201	\$M	+72	\$W	+68	\$F	+107	\$G	+87	\$B	+195	\$C	+325
-------	------	-------	------	-----	-----	-----	-----	-----	------	-----	-----	-----	------	-----	------

CED	BW	WW	YW	DMI	YH	SC	DOC	HP	CEM	MILK	MW	MH	CW	RE	FAT						
43	47	69	84	22	77	100	88	71	82	72	87	59	70	12	5	59	86	49	85	16	96

### Proven Females

Top 1% REA	Top 4% \$G	Top 10% Claw	Top 20% \$M	Top 25% DMI
Top 3% \$AxH	Top 5% \$C	Top 10% Marb	Top 20% TEAT	
Top 4% \$AxJ	Top 10% \$B	Top 20% \$F	Top 25% CED	

• Jilt K071 is a calving-ease, Marb., RE and \$B female produced by the second-generation Audley Jilt, Jilt E084 sired by the proven multi-trait Select Sires roster member, Veracious.

• Has a 8/29/25 heifer calf, Lot 25A, by EZAR Gettysburg 1061.  
 • Due 9/5/26 to Dandy Acres Skyline.

## 24A E W A 558 of 3161 Powercat

Birth Date: 09-05-2025 Cow #\*21383715 Tattoo: 558

\*E & B Wildcat 9402 #\*GAR Discovery 6737H  
 \*G A R Powercat E&B Lady Plus 643  
 20665222 \*Daltons Rita 0206 #\*GB Fireball 672  
 +\*Daltons Rita 8225

\*\*HPCA Veracious #\*Mill Brae Identified 4031  
 +\*E W A 3161 of 9143 Veracious #\*H P C A Sunrise A246  
 20873762 +\*E W A 9143 of 714 Peyton #\*E W A Peyton 642  
 +\*E W A 714 of 3128 Fortress

CED	BW	WW	YW	RADG	DMI	YH	SC	HP	CEM	MILK	TEAT	UDDR	FL
+11	+1.7	+90	+157	+34	+1.17	+1.0	+8.7	+13.5	+12	+22	+51	+52	+91

MW	MH	DOC	CLAW	ANGLE	PAP	HS	CW	MARB	RE	FAT
+125	+1.2	+19	+37	+38	+2.35	+5.4	+67	+1.39	+9.7	-0.03

\$AxH	+225	\$AxJ	+234	\$M	+57	\$W	+80	\$F	+114	\$G	+94	\$B	+209	\$C	+328
-------	------	-------	------	-----	-----	-----	-----	-----	------	-----	-----	-----	------	-----	------

CED	BW	WW	YW	DMI	YH	SC	DOC	HP	CEM	MILK	MW	MH	CW	RE	FAT						
10	41	10	19	49	17	41	45	31	35	43	6	8	21	8	17	54	95	7	12	61	76

### Non-Parent Females

Top 5% RADG	Top 10% \$G	Top 15% \$B	Top 15% Marb	Top 25% REA
Top 5% WW	Top 10% CEM	Top 15% \$C	Top 20% \$F	
Top 10% \$AxH	Top 10% Claw	Top 15% Angle	Top 20% \$W	
Top 10% \$AxJ	Top 10% YW	Top 15% CED	Top 25% HPreg	

Owned by Edgewood Angus, West Point, VA

## 25A Audley Jilt N068

Birth Date: 08-29-2025 Cow #\*21525980 Tattoo: N068

\*WAR Cavalry B063 Z044 #\*Connealy Cavalry 1149  
 \*EZAR Gettysburg 1061 War CC&7 Z044 X029  
 20028170 \*Paf Rita 7096 #\*Connealy Confidence Plus  
 +\*Paf Rita 5091

\*\*HPCA Veracious #\*Mill Brae Identified 4031  
 \*Audley Jilt K071 #\*H P C A Sunrise A246  
 20339862 \*Audley Jilt E084 #\*V A R Index 3282  
 44 Jilt 4408

CED	BW	WW	YW	RADG	DMI	YH	SC	HP	CEM	MILK	TEAT	UDDR	FL
+4	+2.6	+88	+153	+32	+1.25	+7	+48	+10.5	+10	+23	+67	+72	+1.11

MW	MH	DOC	CLAW	ANGLE	PAP	HS	CW	MARB	RE	FAT
+86	+7	+12	+58	+64	+1.96	+32	+68	+1.22	+1.25	+0.30

\$AxH	+219	\$AxJ	+217	\$M	+66	\$W	+81	\$F	+115	\$G	+87	\$B	+202	\$C	+328
-------	------	-------	------	-----	-----	-----	-----	-----	------	-----	-----	-----	------	-----	------

CED	BW	WW	YW	DMI	YH	SC	DOC	HP	CEM	MILK	MW	MH	CW	RE	FAT						
70	83	23	32	35	75	89	67	39	41	70	54	64	29	14	19	71	100	89	99	16	66

### Non-Parent Females

Top 10% \$AxH	Top 10% WW	Top 15% \$C	Top 15% RADG	Top 20% Marb
Top 10% \$AxJ	Top 10% YW	Top 15% \$G	Top 15% UDDER	Top 25% CWT
Top 10% REA	Top 15% \$B	Top 15% \$W	Top 20% \$F	Top 25% HS

# EWA 2196



**EWA 2196 of 8113 Dual Threat / Lot 26**

**EWA 520 of 2196  
Preeminent /  
Lot 26A**



**26**

## EWA 2196 of 8113 Dual Threat

Birth Date: 10-16-2022 Cow #\*20501238 Tattoo: 2196

#\*G A R Sure Fire  
#\*Connealy In Sure 8524  
#\*G A R Dual Threat  
+Chair Rock 5050 G A R 8086  
19123898 #\*G A R Daybreak A3010  
#MCC Daybreak  
\*G A R 5050 New Design A91

\*G A R Method  
#\*G A R Momentum  
#\*E W A 8113 of 531 Method  
+\*G A R Daybreak 1332  
19307449 #\*EWA GLC 531 of 128 Weigh Up  
#\*Plattmere Weigh Up K360  
Edgewood Jaunty 128

CED	BW	WW	YW	RADG	DMI	YH	SC	HP	CEM	MILK	TEAT	UDDR	FL		
+11	+1	+81	+145	+31	+1.44	+9	+78	+11.7	+11	+22	+9.0	+81	+95		
MW	MH	DOC	CLAW	ANGLE	PAP	HS	CW	MARB	RE	FAT					
+104	+8	+24	+46	+41	+2.62	+17	+70	+1.10	+98	+039					
\$AxH	+198	\$AxJ	+200	SM	+63	SW	+74	SF	+123	SG	+77	SB	+201	SC	+324

CED	BW	WW	YW	DMI	YH	SC	DOC	HP	CEM	MILK	MW	MH	RE	FAT	TEND	CLAW	ANGL	HS	PAP		
8	23	63	45	35	73	57	27	36	44	86	48	63	62	6	40	79	91	44	27	6	87

**Proven Females**

Top 2% TEAT	Top 5% \$F	Top 10% Marb	Top 15% CED	Top 25% BW
Top 3% UDDR	Top 5% HS	Top 10% RADG	Top 15% CEM	
Top 4% \$AxJ	Top 10% \$C	Top 10% WW	Top 15% REA	
Top 5% \$AxH	Top 10% \$G	Top 10% YW	Top 20% \$W	
Top 5% \$B	Top 10% CWT	Top 15% Angle	Top 20% Doc	

**26A**

## E W A 520 of 2196 Preeminent

Birth Date: 08-26-2025 Cow #\*21362383 Tattoo: 520

#\*G A R Transcendent  
#\*G A R Momentum  
#\*B&B Preeminent  
+\*G A R Prophet 2685  
20500166 #\*B&B 0F04 of 6528XFireball  
#\*GB Fireball 672  
+\*2 Bar Partner 6528

\*G A R Dual Threat  
#\*G A R Sure Fire  
#\*EWA 2196 of 8113 Dual Threat  
+\*G A R Daybreak A3010  
20501238 #\*E W A 8113 of 531 Method  
\*G A R Method  
+\*EWA GLC 531 of 128 Weigh Up

CED	BW	WW	YW	RADG	DMI	YH	SC	HP	CEM	MILK	TEAT	UDDR	FL		
+8	+2.1	+92	+149	+27	+1.19	+9	+25	+11.2	+10	+10	+80	+85	+89		
MW	MH	DOC	CLAW	ANGLE	PAP	HS	CW	MARB	RE	FAT					
+129	+1.1	+14	+38	+45	+2.75	+29	+73	+1.65	+1.15	-.024					
\$AxH	+261	\$AxJ	+262	SM	+38	SW	+67	SF	+121	SG	+111	SB	+233	SC	+340

CED	BW	WW	YW	DMI	YH	SC	DOC	HP	CEM	MILK	MW	MH	RE	FAT	TEND	CLAW	ANGL	HS	PAP		
59	81	18	46	35	45	57	77	49	25	100	11	19	19	2	9	11	94	14	34	14	82

**Non-Parent Females**

Top 2% \$AxJ	Top 4% \$B	Top 15% \$C	Top 15% REA
Top 3% UDDR	Top 5% Marb	Top 15% \$F	Top 15% YW
Top 3% \$AxH	Top 5% WW	Top 15% Claw	Top 20% CWT
Top 3% \$G	Top 10% TEAT	Top 15% Fat	Top 20% HS

Owned by Edgewood Angus, West Point, VA



**EWA Captain /** The record-selling multi-trait leader of the FB Genetics, Prime of Iowa and Edgewood Angus herd sire rosters and maternal brother to Lot 26.

Owned by Edgewood Angus, West Point, VA

- EWA 2196 is a calving-ease, HS, Marb. and \$B daughter of the \$25,000 powerful herd sire producing highlight of the Maplebrook Farms donor program, 8113 sired by the proven female sire, Dual Threat.
- EWA 8113, the dam of Lot 26 joined the Maplebrook Farms program as the \$25,000 top-selling donor of the 2021 Edgewood Angus LiveOnline Sale and is an eighth-generation member of the famous Jaunty family in the EWA program. EWA 2196 posts a BR 2@87 and a WR 1@107. EWA 8113, the dam of Lot 26 blends the foundation female sire, Method with a dam who combines the now-deceased female sire, Weigh Up K360 and the Select Sires roster member, New Design 5050. The dam of Lot 26 records a WR 3@105 and a YR 1@113 while showing ultrasound ratios IMF 14@101 and REA 14@99.
- Maternal siblings to Lot 26 include: Captain, the \$170,000 record-selling bull ever produced in the Edgewood Angus program selected by FB Genetics and Butz Hill Angus in the 2021 Edgewood Angus LiveOnline Sale and proven \$B and \$C leader; Winning Goal M29, the \$21,000 feature of the record-setting 2025 44 Farms Spring Bull Sale; True Balance M25 selected by Riverbend Ranch in the record-setting 2025 Gobbell G3 Sale; and the Select Sires South American sires, EWA 2153 of 8113 Home Town and EWA 2175 of 8113 Veracious.
- Has a 8/26/25 heifer calf, Lot 26A, by B&B Preeminent.
- Due 8/24/26 to Poss Winchester.

# Foundation Families



## GAR Momentum N1338 /

A daughter of this cornerstone Riverbend Ranch and Jenkins Angus donor sells as Lot 28.

## 27 Audley Young Lady K220

Birth Date: 09-17-2022 Cow \*20576809 Tattoo: K220

#\*Bar R Jet Black 5063  
\*LAR Man In Black  
19955191 #JMB Maxine TG 2131

#\*Connealy Black Granite  
Bar R Iris Anita 0113  
#\*Sitz Top Game 561X  
#JMB Maxine Deluxe 9034

\*44 Common Sense 6160  
\*Audley Young Lucy G129  
19714470 #\*Audley Young Lucy E080

#\*V A R Index 3282  
44 Erica Z517  
#\*G A R Prophecy  
Audley Young Lucy C111

CED	BW	WW	YW	RADG	DMI	YH	SC	HP	CEM	MILK	TEAT	UDDR	FL
+1	+3.9	+87	+147	+28	+1.63	+7	+1.39	+10.6	+2	+24	+79	+84	+1.09
MW	MH	DOC	CLAW	ANGLE	PAP	HS	CW	MARB	RE	FAT			
+89	+9	+29	+41	+42	+43	+88	+63	+1.04	+71	+0.21			

\$AxH	+150	\$AxJ	+128	\$M	+81	\$W	+77	\$F	+102	\$G	+72	\$B	+175	\$C	+308						
CED	BW	WW	YW	DMI	YH	SC	DOC	HP	CEM	MILK	MW	MH	CW	MB	REA	FAT	TEND	CLAW	ANGL	HS	PAP
83	83	15	11	81	43	5	13	55	93	84	14	19	19	13	37	77	10	9	21	89	35

### Proven Females

Top 2% UDDER	Top 10% TEAT	Top 15% \$M	Top 15% Marb	Top 20% Angle
Top 4% WW	Top 10% YW	Top 15% \$W	Top 15% SC	Top 25% RADG
Top 10% \$C	Top 15% \$B	Top 15% CWT	Top 20% \$AxH	
Top 10% Doc	Top 15% \$G	Top 15% Claw	Top 20% \$AxJ	

- Young Lady K220 is a growth, PAP and \$M daughter of the fourth-generation Audley Young Lucy, Young Lucy G129 sired by Man In Black.
- Young Lucy G129, the dam of Lot 27 is a direct daughter of the Pathfinder Dam, Young Lucy E080 sired by the former Audley herd sire, Common Sense and posts a WR 2@99.
- Has a 9/23/25 heifer calf, Lot 27A, by RSA True Balance 1311.
- Due 10/19/26 to Audley True Power.

## 28 Riverbend Rita K506

Birth Date: 03-03-2022 Cow \*20358406 Tattoo: K506

#\*Hoover No Doubt  
\*Sterling Pacific 904  
19444025 #\*Baldrige Isabel B082

#\*Mogck Bullseye  
\*Miss Blackcap Ellston J2  
#\*G A R Prophet  
\*Baldrige Isabel Y69

#\*G A R Momentum  
\*G A R Momentum N1338  
19393521 #\*G A R Sunrise F366

#\*G A R Progress  
+G A R Big Eye 1770  
#\*G A R Sunrise  
+G A R Prophet F1114

CED	BW	WW	YW	RADG	DMI	YH	SC	HP	CEM	MILK	TEAT	UDDR	FL
+9	+1.3	+67	+125	+28	+1.51	+4	+27	+11.4	+8	+13	+70	+58	+1.00
MW	MH	DOC	CLAW	ANGLE	PAP	HS	CW	MARB	RE	FAT			
+73	+5	+24	+57	+49	+82	+48	+53	+1.39	+81	+0.25			

\$AxH	+210	\$AxJ	+188	\$M	+49	\$W	+45	\$F	+104	\$G	+90	\$B	+195	\$C	+302						
CED	BW	WW	YW	DMI	YH	SC	DOC	HP	CEM	MILK	MW	MH	CW	MB	REA	FAT	TEND	CLAW	ANGL	HS	PAP
49	57	81	43	56	89	71	67	69	94	99	75	79	82	6	47	64	50	46	49	61	55

### Proven Females

Top 3% Marb	Top 5% \$AxJ	Top 15% TEAT	Top 25% \$F	Top 25% YW
Top 4% \$AxH	Top 10% \$B	Top 20% Doc	Top 25% CED	
Top 4% \$G	Top 15% \$C	Top 20% RADG	Top 25% REA	

- Rita K506 is a low-birth and Marb. female produced by the \$22,500 selection of Jenkins Angus in the 2021 Riverbend Sale as the top-selling proven donor of that offering, Momentum N1338 by the proven female sire, Pacific 904.
- Momentum N1338 is a direct daughter of the cornerstone member of the Huwa Cattle Company program, Sunrise F366 sired by the proven Marb. leader, Momentum. The dam of Lot 28 shows an ultrasound IMF ratio 10@111.
- Full and maternal siblings to Rita K506 include: Rita K044, the \$17,000 selection of Arelleno Bravo Angus in the 2022 Riverbend Sale; Rita K055 selling in that offering to Baldrige Performance Angus; and Regiment K095, the \$17,000 featured spring yearling of the record-setting 2023 Riverbend Genetic Edge Bull Sale selected by San Benito Cattle Company.
- Has a 9/2/25 heifer calf, Lot 28A, by BNWZ Validity 2491.
- Due 10/14/26 to Audley True Power.

## 27A Audley Young Lady N145

Birth Date: 09-23-2025 Cow \*21526010 Tattoo: N145

#\*G A R Home Town  
\*RSA True Balance 1311  
20129422 #\*RSA Forever Lady 9204

#\*G A R Ashland  
#\*Chair Rock Sure Fire 6095  
#\*EXAR Monumental 6056B  
#\*RSA Forever Lady 7232

\*LAR Man In Black  
\*Audley Young Lady K220  
20576809 #\*Audley Young Lucy G129

#\*Bar R Jet Black 5063  
#JMB Maxine TG 2131  
#44 Common Sense 6160  
#\*Audley Young Lucy E080

CED	BW	WW	YW	RADG	DMI	YH	SC	HP	CEM	MILK	TEAT	UDDR	FL
+6	+3.4	+91	+150	+31	+1.04	+4	+1.41	+10.3	+7	+23	+80	+82	+1.07
MW	MH	DOC	CLAW	ANGLE	PAP	HS	CW	MARB	RE	FAT			
+86	+6	+4	+24	+46	+44	+1.55	+61	+74	+1.44	+1.06	+0.09		

\$AxH	+267	\$AxJ	+249	\$M	+83	\$W	+85	\$F	+127	\$G	+97	\$B	+225	\$C	+375						
CED	BW	WW	YW	DMI	YH	SC	DOC	HP	CEM	MILK	MW	MH	CW	MB	REA	FAT	TEND	CLAW	ANGL	HS	PAP
68	76	5	20	51	36	5	18	78	69	78	12	30	4	6	14	33	18	29	41	69	63

### Non-Parent Females

Top 2% \$AxH	Top 5% WW	Top 10% Marb	Top 15% REA	Top 20% SC
Top 2% UDDER	Top 10% \$B	Top 10% TEAT	Top 15% YW	Top 25% Doc
Top 3% \$C	Top 10% \$F	Top 15% \$M	Top 20% CWT	
Top 4% \$AxJ	Top 10% \$G	Top 15% \$W	Top 20% RADG	

## 28A Audley Rita N088

Birth Date: 09-02-2025 Cow \*21530102 Tattoo: N088

#\*HPCA Veracious  
\*BNWZ Validity 2491  
20562449 #\*RB Lady Denver 167-453

#\*Mill Brae Identified 4031  
#\*H P C A Sunrise A246  
#\*EXAR Denver 2002B  
#\*R B Lady Party 167-305

\*Sterling Pacific 904  
\*Riverbend Rita K506  
20358406 #\*G A R Momentum N1338

#\*Hoover No Doubt  
#\*Baldrige Isabel B082  
#\*G A R Momentum  
#\*G A R Sunrise F366

CED	BW	WW	YW	RADG	DMI	YH	SC	HP	CEM	MILK	TEAT	UDDR	FL
+7	+2.5	+78	+139	+26	+1.77	+7	+20	+13.1	+10	+21	+58	+57	+1.01
MW	MH	DOC	CLAW	ANGLE	PAP	HS	CW	MARB	RE	FAT			
+72	+6	+21	+45	+38	+90	+26	+71	+1.54	+81	+0.02			

\$AxH	+220	\$AxJ	+199	\$M	+78	\$W	+68	\$F	+116	\$G	+99	\$B	+215	\$C	+357						
CED	BW	WW	YW	DMI	YH	SC	DOC	HP	CEM	MILK	MW	MH	CW	MB	REA	FAT	TEND	CLAW	ANGL	HS	PAP
55	58	51	38	66	71	75	50	37	58	84	82	79	56	2	85	57	42	9	8	21	53

### Non-Parent Females

Top 10% \$AxH	Top 10% \$G	Top 15% Angle	Top 20% HS	Top 25% YW
Top 10% \$B	Top 10% Marb	Top 20% \$F	Top 25% CWT	
Top 10% \$C	Top 15% \$AxJ	Top 20% \$M	Top 25% WW	

# Mabel J371



EPF Mabel J371 / Lot 29

**29**

## EPF Mabel J371

Birth Date: 02-05-2022 Cow #\*20276477 Tattoo: J371

#\*Musgrave 316 Stunner #\*LD Capitalist 316  
 #DB Iconic G95 #MCATL Blackbird 831-1378  
 19611994 \*DB Ms Discovery D13 #\*V A R Discovery 2240  
 DB Ms Final Tool 4120

#\*Quaker Hill Rampage 0A36 #MCC Daybreak  
 #\*EXAR Mabel 7725 #\*QHF Blackcap 6E2 of 4V16 4355  
 18720652 \*EXAR Mabel 3556 #\*EXAR Upshot 0562B  
 EXAR Mabel 1119

CED	BW	WW	YW	RADG	DMI	YH	SC	HP	CEM	MILK	TEAT	UDDR	FL
+7	+3.5	+89	+156	+29	+2.26	+9	+1.56	+10.8	+10	+16	+26	+43	+99

MW	MH	DOC	CLAW	ANGLE	PAP	HS	CW	MARB	RE	FAT
+116	+1.0	+15	+44	+45	+2.96	+52	+66	+1.24	+60	+023

\$AxH	+168	\$AxJ	+162	\$M	+44	\$W	+65	\$F	+102	\$G	+80	\$B	+183	\$C	+281
-------	------	-------	------	-----	-----	-----	-----	-----	------	-----	-----	-----	------	-----	------

CED	BW	WW	YW	DMI	YH	SC	DOC	HP	CEM	MILK	MW	MH	CW	MS	REA	FAT	TEND	CLAW	ANGL	HS	PAP
36	76	18	11	98	27	27	65	36	36	94	8	18	41	16	68	61	53	26	27	56	77

**Proven Females**

Top 3% WW	Top 10% \$B	Top 10% \$C	Top 15% RADG	Top 25% Claw
Top 3% YW	Top 10% \$G	Top 15% \$AxH	Top 25% \$C	
Top 10% \$AxJ	Top 10% Marb	Top 15% CWT	Top 25% Angle	

**29A**

## Audley Mabel N117

Birth Date: 09-07-2025 Cow #\*21526041 Tattoo: N117

#\*G A R Home Town #\*G A R Ashland  
 #RSA True Balance 1311 #\*Chair Rock Sure Fire 6095  
 20129422 \*RSA Forever Lady 9204 #\*EXAR Monumental 6056B  
 \*RSA Forever Lady 7232

\*DB Iconic G95 #\*Musgrave 316 Stunner  
 #\*EPF Mabel J371 #\*DB Ms Discovery D13  
 20276477 #\*EXAR Mabel 7725 #\*Quaker Hill Rampage 0A36  
 \*EXAR Mabel 3556

CED	BW	WW	YW	RADG	DMI	YH	SC	HP	CEM	MILK	TEAT	UDDR	FL
+12	+8	+74	+132	+30	+1.00	+6	+1.62	+11.6	+13	+28	+41	+60	+1.11

MW	MH	DOC	CLAW	ANGLE	PAP	HS	CW	MARB	RE	FAT
+47	+3	+18	+33	+41	-89	+21	+63	+1.55	+81	+041

\$AxH	+243	\$AxJ	+226	\$M	+94	\$W	+80	\$F	+121	\$G	+97	\$B	+218	\$C	+377
-------	------	-------	------	-----	-----	-----	-----	-----	------	-----	-----	-----	------	-----	------

CED	BW	WW	YW	DMI	YH	SC	DOC	HP	CEM	MILK	MW	MH	CW	MS	REA	FAT	TEND	CLAW	ANGL	HS	PAP
41	40	49	38	43	55	4	54	35	16	61	65	66	29	10	29	59	38	5	11	6	9

**Non-Parent Females**

Top 3% \$C	Top 5% CEM	Top 10% \$G	Top 15% HS	Top 25% FL
Top 4% Claw	Top 10% \$AxJ	Top 10% CED	Top 15% PAP	Top 25% UDDR
Top 5% \$AxH	Top 10% \$B	Top 10% Marb	Top 20% SW	
Top 5% \$M	Top 10% \$F	Top 10% \$C	Top 20% Angle	

- Mabel J371 is a proven daughter of the featured and high-selling spring pair of the 2020 Big Event at Express Ranches, Mabel 7725 and sired by the Genex leader, Iconic G95.
- Mabel 7725, the dam of Lot 29 joined the Edisto Pines Farm program along with her \$50,000 daughter, Mabel 0091 as the headlining spring pair of the 2020 Big Event and she blends the proven Mapleton Farm and Quaker Hill Farms leader, Rampage with a productive daughter of the \$400,000 valued Upshot 0562B.

- The dam of Lot 29 records a BR 4@99, WR 4@108 and a YR 3@108.
- Maternal sisters to Lot 29 include: Mabel 0091, the \$50,000 selection of Edisto Pines in the 2020 Big Event at Express Ranches; and Mabel J183, the \$27,500 selection of Lylester Ranch in the 2021 Edisto Pines Sale.
- Has a 9/7/25 heifer calf, Lot 29A, by RSA True Balance 1311.
- Due 9/5/26 to PEAK Draft Pick.

# Performance Pairs



**EZAR Gettysburg 1061** / The record-selling Blackstone Cattle Company sire of Lots 30A and 31A.



**GAR Home Town** / The multi-trait leading female sire of Lot 31.

**30**

## Audley Miss Lucy K243

Birth Date: 09-23-2022 Cow \*20577387 Tattoo: K243

\*G A R Prophet K263  
 #Beal Breakthrough  
 19829112 \*H P C A Sure Fire S6

#\*G A R Prophet  
 #\*Chair Rock 5050 G A R 1131  
 #\*G A R Sure Fire  
 #\*H P C A Ingenuity A372

#\*A A R Ten X 7008 S A  
 #Thomas Miss Lucy 41088  
 18040481 Thomas Miss Lucy 8874

#\*Mytty In Focus  
 #A A R Lady Kelton 5551  
 #\*Rito 112 of 2536 Rito 616  
 #Thomas Miss Lucy 1873

CED	BW	WW	YW	RADG	DMI	YH	SC	HP	CEM	MILK	TEAT	UDDR	FL
+10	-1.1	+74	+132	+25	+1.83	+6	+4.3	+10.7	+12	+21	+44	+45	+96
MW	MH	DOC	CLAW	ANGLE	PAP	HS	CW	MARB	RE	FAT			
+82	+6	+12	+57	+39	+1.13	+27	+58	+1.07	+1.00	+0.42			
\$AxH	\$AxJ	\$M	\$W	\$F	\$G	\$B	\$C						
+175	+171	+49	+69	+97	+76	+173	+273						

CED	BW	WW	YW	DMI	YH	SC	DOC	HP	CEM	MILK	MW	MH	CW	MB	REA	FAT	TEND	CLAW	ANGL	HS	PAP
46	17	36	37	86	64	76	65	68	35	86	55	64	40	24	26	86	95	72	9	11	48

*Proven Females*

Top 10% \$AxH	Top 10% Angle	Top 15% CEM	Top 15% YW	Top 20% WW
Top 10% \$AxJ	Top 10% BW	Top 15% HS	Top 20% \$B	Top 25% CWT
Top 10% \$G	Top 10% REA	Top 15% Marb	Top 20% CED	

• Miss Lucy K243 is a calving-ease, PAP and Marb. female produced by the foundation Miss Lucy in the Audley program, Miss Lucy 41088 sired by the proven multi-trait leader in the ST Genetics roster, Breakthrough.

• Miss Lucy K243 records a WR 1@108 and a YR 1@109 while showing an ultrasound REA ratio 1@119. Miss Lucy 41088, the Pathfinder Dam of Lot 30 posts a BR 7@91, a WR 7@107 and a YR 6@103.

• Has a 9/4/25 heifer calf, Lot 30A, by EZAR Gettysburg 1061.

• Due 9/5/26 to BNWZ Validity 2491.

**31**

## Audley Lady J165

Birth Date: 08-23-2021 Cow \*20267389 Tattoo: J165

#\*G A R Ashland  
 #\*G A R Home Town  
 19266718 \*Chair Rock Sure Fire 6095

\*G A R Early Bird  
 #\*Chair Rock Ambush 1018  
 #\*G A R Sure Fire  
 #\*Chair Rock Progress 3005

#\*A A R Ten X 7008 S A  
 #Thomas Lady 41159  
 17956740 \*Thomas Lady 2391

#\*Mytty In Focus  
 #A A R Lady Kelton 5551  
 #\*Summitcrest Complete 1P55  
 Thomas Lady 0005

CED	BW	WW	YW	RADG	DMI	YH	SC	HP	CEM	MILK	TEAT	UDDR	FL
+6	+2.9	+79	+141	+28	+1.54	+9	+1.32	+11.2	+8	+19	+47	+50	+1.01
MW	MH	DOC	CLAW	ANGLE	PAP	HS	CW	MARB	RE	FAT			
+75	+7	+12	+48	+38	-1.54	+48	+72	+1.51	+96	-0.36			
\$AxH	\$AxJ	\$M	\$W	\$F	\$G	\$B	\$C						
+226	+218	+63	+64	+124	+102	+227	+357						

CED	BW	WW	YW	DMI	YH	SC	DOC	HP	CEM	MILK	MW	MH	CW	MB	REA	FAT	TEND	CLAW	ANGL	HS	PAP
81	90	51	24	78	26	19	88	76	30	98	55	49	16	3	27	11	68	37	3	51	8

*Proven Females*

Top 2% \$AxH	Top 2% \$G	Top 5% PAP	Top 15% REA
Top 2% \$AxJ	Top 2% Marb	Top 10% Angle	Top 15% WW
Top 2% \$B	Top 5% \$F	Top 10% CWT	Top 20% RADG
Top 2% \$C	Top 5% Fat	Top 10% YW	Top 20% SC

• Lady J165 is a PAP and Marb. highlight from the top of the Audley fall calving program and stems from a foundation dam from the famous Thomas Angus Ranch Lady family and sired by the proven multi-trait female sire, Home Town.

• Lady J165 records a WR 2@104 and a YR 2@104 while carrying an ultrasound IMF ratio 2@113. Lady 41159, the dam of Lot 31 posts a WR 7@100 and a YR 5@103 while showing an ultrasound IMF ratio 4@111.

• Has a 8/28/25 heifer calf, Lot 31A, by EZAR Gettysburg 1061.

• Due 9/5/26 to Antczak Pathway.

**30A**

## Audley Miss Lucy N105

Birth Date: 09-04-2025 Cow \*21525814 Tattoo: N105

\*WAR Cavalry B063 Z044  
 #EZAR Gettysburg 1061  
 20028170 \*Paf Rita 7096

#\*Connealy Cavalry 1149  
 War CC&7 Z044 X029  
 #\*Connealy Confidence Plus  
 \*Paf Rita 5091

\*Beal Breakthrough  
 #Audley Miss Lucy K243  
 20577387 #Thomas Miss Lucy 41088

\*G A R Prophet K263  
 #\*H P C A Sure Fire S6  
 #\*A A R Ten X 7008 S A  
 Thomas Miss Lucy 8874

CED	BW	WW	YW	RADG	DMI	YH	SC	HP	CEM	MILK	TEAT	UDDR	FL
+5	+1.7	+92	+168	+32	+2.35	+7	+8.1	+10.4	+12	+22	+56	+50	+98
MW	MH	DOC	CLAW	ANGLE	PAP	HS	CW	MARB	RE	FAT			
+116	+6	+14	+63	+41	-69	+42	+74	+89	+1.42	+0.33			
\$AxH	\$AxJ	\$M	\$W	\$F	\$G	\$B	\$C						
+192	+205	+48	+82	+112	+73	+185	+288						

CED	BW	WW	YW	DMI	YH	SC	DOC	HP	CEM	MILK	MW	MH	CW	MB	REA	FAT	TEND	CLAW	ANGL	HS	PAP
46	44	19	8	81	77	49	36	56	21	66	32	71	31	26	8	93	100	82	19	29	23

*Non-Parent Females*

Top 2% REA	Top 15% \$AxJ	Top 15% RADG	Top 20% Angle	Top 25% \$F
Top 3% YW	Top 15% CEM	Top 20% \$AxH	Top 20% CWT	Top 25% \$G
Top 5% WW	Top 15% PAP	Top 20% \$W	Top 25% \$B	

**31A**

## Audley Lady N065

Birth Date: 08-28-2025 Cow \*21525984 Tattoo: N065

\*WAR Cavalry B063 Z044  
 #EZAR Gettysburg 1061  
 20028170 \*Paf Rita 7096

#\*Connealy Cavalry 1149  
 War CC&7 Z044 X029  
 #\*Connealy Confidence Plus  
 \*Paf Rita 5091

#\*G A R Home Town  
 #Audley Lady J165  
 20267389 \*Thomas Lady 41159

#\*G A R Ashland  
 #\*Chair Rock Sure Fire 6095  
 #\*A A R Ten X 7008 S A  
 #\*Thomas Lady 2391

CED	BW	WW	YW	RADG	DMI	YH	SC	HP	CEM	MILK	TEAT	UDDR	FL
+3	+3.4	+90	+151	+27	+1.69	+1.1	+9.5	+7	+28	+62	+58	+1.12	
MW	MH	DOC	CLAW	ANGLE	PAP	HS	CW	MARB	RE	FAT			
+75	+7	+9	+51	+36	+16	+75	+87	+1.15	+1.27	-0.12			
\$AxH	\$AxJ	\$M	\$W	\$F	\$G	\$B	\$C						
+210	+235	+79	+90	+174	+87	+222	+367						

CED	BW	WW	YW	DMI	YH	SC	DOC	HP	CEM	MILK	MW	MH	CW	MB	REA	FAT	TEND	CLAW	ANGL	HS	PAP
71	88	17	32	93	15	40	86	68	37	47	54	50	2	37	3	25	80	54	10	89	39

*Non-Parent Females*

Top 4% \$F	Top 10% \$AxJ	Top 10% WW	Top 20% \$M
Top 4% CWT	Top 10% \$B	Top 10% YW	Top 20% FL
Top 5% \$C	Top 10% \$W	Top 15% \$AxH	Top 20% Fat
Top 5% REA	Top 10% Angle	Top 15% \$G	Top 25% Marb

# Rita J119



Audley Rita N089 / Lot 32A

**32**

## Audley Rita J119

Birth Date: 08-16-2021

Cow \*20267305

Tattoo: J119

#\*G A R Momentum  
#\*E W A West Point 7258  
19054061 +\*E W A 3114 of 128 Weigh Up

#\*G A R Progress  
+G A R Big Eye 1770  
#\*Plattermere Weigh Up K360  
Edgewood Jaunty 128

#\*A A R Ten X 7008 S A  
#Spring Grove Rita 6157  
19034812 +Spring Grove Rita 4056

#\*Mytty In Focus  
#A A R Lady Kelton 5551  
#\*G A R New Design 5050  
+\*Rita 9067 of Rita 5M13 Obj

CED	BW	WW	YW	RADG	DMI	YH	SC	HP	CEM	MILK	TEAT	UDDR	FL								
+10	+1.4	+81	+146	+32	+1.47	+1.2	+82	+12.2	+9	+42	+55	+63	+1.06								
MW	MH	DOC	CLAW	ANGLE	PAP	HS	CW	MARB	RE	FAT											
+94	+1.1	+29	+66	+52	+4.05	+41	+68	+1.33	+77	+028											
\$AxH	+182	\$AxJ	+194	SM	+64	SW	+95	SF	+115	SG	+87	SB	+203	SC	+327						
CED	BW	WW	YW	DMI	YH	SC	DOC	HP	CEM	MILK	MW	MH	CW	MR	REA	FAT	TEND	CLAW	ANGL	HS	RP
53	67	29	17	87	6	52	10	38	85	3	17	6	13	13	49	73	20	96	63	45	96

*Proven Females*

Top 1% Milk	Top 5% \$AxJ	Top 10% \$AxH	Top 10% YW
Top 2% \$W	Top 5% \$B	Top 10% CWT	Top 15% \$F
Top 4% Marb	Top 5% \$C	Top 10% Doc	Top 20% CED
Top 4% RADG	Top 5% \$G	Top 10% WW	Top 25% UDDER

**32A**

## Audley Rita N089

Birth Date: 09-02-2025

Cow \*21525986

Tattoo: N089

\*WAR Cavalry B063 Z044  
#\*EZAR Gettysburg 1061  
20028170 \*Paf Rita 7096

#\*Connealy Cavalry 1149  
War CC&7 Z044 X029  
#\*Connealy Confidence Plus  
\*Paf Rita 5091

#\*E W A West Point 7258  
#\*Audley Rita J119  
20267305 #Spring Grove Rita 6157

#\*G A R Momentum  
+\*E W A 3114 of 128 Weigh Up  
#\*A A R Ten X 7008 S A  
+Spring Grove Rita 4056

CED	BW	WW	YW	RADG	DMI	YH	SC	HP	CEM	MILK	TEAT	UDDR	FL								
+9	+2.6	+98	+177	+39	+1.94	+1.3	+51	+12.0	+16	+35	+53	+54	+1.06								
MW	MH	DOC	CLAW	ANGLE	PAP	HS	CW	MARB	RE	FAT											
+116	+1.0	+24	+55	+44	+1.39	+51	+89	+1.42	+1.05	+026											
\$AxH	+227	\$AxJ	+251	SM	+73	SW	+101	SF	+138	SG	+95	SB	+233	SC	+375						
CED	BW	WW	YW	DMI	YH	SC	DOC	HP	CEM	MILK	MW	MH	CW	MR	REA	FAT	TEND	CLAW	ANGL	HS	RP
29	84	2	1	96	12	65	16	24	5	10	7	17	2	5	17	75	60	53	24	60	66

*Non-Parent Females*

Top 1% CEM	Top 2% \$W	Top 3% \$F	Top 4% \$B	Top 10% Milk
Top 1% RADG	Top 2% WW	Top 3% CWT	Top 10% \$AxH	Top 15% Marb
Top 1% YW	Top 3% \$C	Top 4% \$AxJ	Top 10% \$G	Top 20% REA

- Rita J119 is a proven and productive growth, Marb., \$W and \$B female produced by the cornerstone Rita in the Audley program. Rita 6157 sired by the proven Edgewood Angus and Select Sires carcass feature, West Point.
- Rita J119 records a WR 2@121 and a YR 1@114 while showing

- an ultrasound REA ratio 1@108. Rita 6157, the dam of Lot 32 posts a WR 4@106 and a YR 2@99 while carrying an ultrasound IMF ratio 2@101.
- Has a 9/2/25 heifer calf, Lot 32A, by EZAR Gettysburg 1061.
- Due 10/14/26 to Audley True Power.

# Elba J114

Audley Elba J114 /  
Lot 33



Audley Elba N143 /  
Lot 33A



**33**

## Audley Elba J114

Birth Date: 08-15-2021

Cow \*20268498

Tattoo: J114

#SydGen Enhance

#\*SydGen Exceed 3223

#\*S S Enforcer E812

SydGen Rita 2618

19274932

#S S Miss Daybreak K011 3K17

S S Daybreak K011

S S Miss Incentive X19

+\*44 Pay Attention 7539

#\*Basin Payweight 1682

\*Audley Elba G285

+\*Baldrige Isabel C198

19713066

\*K C F Miss Fusion A299

+\*G A R Fusion

K C F Miss 48708 Y538

CED	BW	WW	YW	RADG	DMI	YH	SC	HP	CEM	MILK	TEAT	UDDR	FL
+0	+2.5	+78	+144	+33	+1.25	+9	+1.58	+10.2	+2	+20	+57	+58	+1.10

MW	MH	DOC	CLAW	ANGLE	PAP	HS	CW	MARB	RE	FAT
+92	+1.1	+27	+51	+43	+78	+54	+58	+82	+72	-.020

\$AxH	+118	\$AxJ	+108	\$M	+59	\$W	+62	\$F	+107	\$G	+65	\$B	+172	\$C	+282
-------	------	-------	------	-----	-----	-----	-----	-----	------	-----	-----	-----	------	-----	------

CED	BW	WW	YW	DMI	YH	SC	DOC	HP	CEM	MILK	MW	MH	CW	MB	REA	FAT	TEND	CLAW	ANGL	HS	PAP
89	57	46	11	55	48	19	13	46	91	93	31	12	48	31	48	21	71	81	43	50	52

### Proven Females

Top 3% RADG	Top 10% YW	Top 20% \$B	Top 20% Angle	Top 25% Marb
Top 10% Doc	Top 15% Fat	Top 20% \$F	Top 25% \$C	
Top 10% SC	Top 15% WW	Top 20% \$G	Top 25% CWT	

**33A**

## Audley Elba N143

Birth Date: 09-23-2025

Cow \*21526067

Tattoo: N143

+\*Poss Ratified

+\*Poss Rawhide

\*KC Kingston

#\*Poss Rita 5116

20549194

\*KC Blackbird 017

\*SydGen Merit 6553

\*Woodhill Blackbird Z45-F150

#\*S S Enforcer E812

#SydGen Enhance

\*Audley Elba J114

#S S Miss Daybreak K011 3K17

20268498

\*Audley Elba G285

+\*44 Pay Attention 7539

\*K C F Miss Fusion A299

CED	BW	WW	YW	RADG	DMI	YH	SC	HP	CEM	MILK	TEAT	UDDR	FL
+9	+1.0	+87	+145	+30	+1.21	+6	+1.04	+10.7	+7	+28	+62	+51	+1.03

MW	MH	DOC	CLAW	ANGLE	PAP	HS	CW	MARB	RE	FAT
+50	+6	+33	+49	+39	+31	+76	+73	+1.10	+95	+060

\$AxH	+217	\$AxJ	+211	\$M	+98	\$W	+99	\$F	+121	\$G	+75	\$B	+197	\$C	+354
-------	------	-------	------	-----	-----	-----	-----	-----	------	-----	-----	-----	------	-----	------

CED	BW	WW	YW	DMI	YH	SC	DOC	HP	CEM	MILK	MW	MH	CW	MB	REA	FAT	TEND	CLAW	ANGL	HS	PAP
24	16	14	24	84	54	36	4	38	91	44	52	27	11	10	41	95	48	72	26	92	34

### Non-Parent Females

Top 1% Doc	Top 10% \$C	Top 15% \$AxJ	Top 20% \$B	Top 25% \$G
Top 2% \$W	Top 10% WW	Top 15% \$F	Top 20% Angle	Top 25% RADG
Top 3% \$M	Top 15% \$AxH	Top 15% YW	Top 20% CWT	

- Elba J114 is a balanced-trait daughter of the proven Spruce Mountain Ranch, Baldrige Performance Angus and Conover Family headliner, Enforcer and stems from a proven daughter of the

- former Audley herd sire Pay Attention 7539.
- Has a 9/23/25 heifer calf, Lot 33A, by KC Kingston.
- Due 9/5/26 to Dandy Acres Skyline.



# Lady 2771-5A11 Embryos



**BNWZ Lady 453-2771 /**  
Grandam of embryos  
selling as Lot 36.

## 36 Three IVF Lady 2771-5A11 Embryos

\*G A R Home Run #\*G A R Home Town  
 \*G A R Grand Slam \*\*Williams F Blackbird 705-429  
 21179283 \*G A R Sunbeam 332  
 \*G A R Identified N910  
 \*FF Rito Ambitious \*SEO Ultra Provider  
 \*D&W Lady 2771-5A11 \*RMRK Rita 0237  
 21187176 \*BNWZ Lady 453-2771  
 \*HPCA Veracious  
 \*RB Lady Denver 167-453

CED	BW	WW	YW	RADG	DMI	YH	SC	HP	CEM	MILK	TEAT	UDDR	FL		
+13	0	+88	+154	+32	+1.54	+5	+69	+14.2	+12	+23	+7	+67	+1.07		
MW	MH	DOC	CLAW	ANGLE	PAP	HS	CW	MARB	RE	FAT					
+80	+6	+22	+61	+55	+1.26	+33	+90	+2.28	+1.21	+0.49					
\$AxH	+352	\$AxJ	+314	\$M	+83	\$W	+86	\$F	+151	\$G	+137	\$B	+288	\$C	+456

Donor - Proven Females			
Top 1% \$F	Top 1% \$C	Top 3% Teat	Top 15% YW
Top 1% \$G	Top 1% Marb	Top 5% UDDR	Top 15% RE
Top 1% \$B	Top 2% CW	Top 15% WW	

• Selling three IVF embryos with a guarantee of one pregnancy if implanted by a certified technician.

**Featuring a exciting set of embryos from the foundation Lady in the Edgewood Angus and D&W Angus programs, Lady 2771-5A11 and sired by the \$800,000 multi-trait leading headliner, Grand Slam.**

- Lady 2771-5A11, the donor dam of these embryos is a direct daughter of the \$400,000 valued highlight and top-selling selection of Spruce Mountain Ranch and Nowatzke Cattle Company, Lady 453-2771 sired by the \$235,000 record-selling multi-trait feature, Ambitious.
- Full and siblings to the dam of this foundation Edgewood and D&W donor include: Lady 453-4972, the \$320,000 valued half interest selection of Spruce Mountain Ranch in the record-breaking 2025 Nowatzke Cattle Company Sale; Validity 2491, the \$220,000 one-time record-selling bull produced in the Nowatzke program selected by Edisto Pines Farm in the 2023 Nowatzke Sale now featured in the Select Sires roster; Bona Fide, the exciting young sire in the Nowatzke Cattle Company, Express Ranches and Katie Colin Farm rosters; Viscosity, the proven leader of the Hill Top Angus herd sire; Lady 453-2928, the \$70,000 selection of Jocko Valley Angus in that same offering; Lady 453-2763, the \$70,000 Double Barrel Angus selection in that same event; and Yours Truly 2013, the \$26,000 second high-selling bull of the 2024 Rhoades Ranch Sale selected by Hopson Angus and Hornung Livestock.



## Audley Free Trade

Birth Date: 09-24-2024 Bull #\*21252191 Tattoo: M1752  
 \*G A R Sunbeam #\*G A R Sunrise  
 \*Connealy Commerce \*G A R Ingenuity 312  
 20132642 \*Avira of Conanga 814R \*Connealy Cade  
 \*Avie of Conanga 624P  
 \*T C A Eastwood #\*Jindra Acclaim  
 \*EPF Rita 1323 \*T C A Marquis Treasure 711  
 19994241 \*\*Black Gold Rita K6009 \*#V A R Discovery 2240  
 \*G A R 5050 New Design 2553

CED	BW	WW	YW	RADG	DMI	YH	SC	HP	CEM	MILK	TEAT	UDDR	FL								
+10	+2.0	+67	+122	+27	+1.19	+6	+90	+10.2	+15	+30	+46	+42	+98								
MW	MH	DOC	CLAW	ANGLE	PAP	HS	CW	MARB	RE	FAT											
+34	+3	+10	+50	+50	+08	+35	+60	+1.25	+1.20	-.024											
\$AxH	+207	\$AxJ	+192	\$M	+68	\$W	+72	\$F	+107	\$G	+92	\$B	+200	\$C	+327						
CED	BW	WW	YW	DMI	YH	SC	DOC	HP	CEM	MILK	MW	MH	CW	MB	REA	FAT	TEND	CLAW	ANGL	HS	PAP
21	65	78	53	58	71	73	98	44	13	25	90	79	47	20	5	10	55	68	78	35	15

Non-Parent Males			
Top 3% CEM	Top 10% REA	Top 15% \$B	Top 20% CED
Top 10% \$G	Top 15% \$AxH	Top 15% \$C	Top 25% Milk
Top 10% Fat	Top 15% \$AxJ	Top 15% Marb	



## Audley True Power

Birth Date: 09-19-2023 Bull #\*20880476 Tattoo: L225  
 #\*G A R Home Town #\*G A R Ashland  
 \*RSA True Balance 1311 \*Chair Rock Sure Fire 6095  
 20129422 \*RSA Forever Lady 9204 \*EXAR Monumental 6056B  
 \*RSA Forever Lady 7232  
 #\*V A R Power Play 7018 #\*Basin Payweight 1682  
 \*Vintage Chloe 9071 \*Sandpoint Blackbird 8809  
 19349028 \*DCF Chloe 5769 \*#V A R Discovery 2240  
 EXAR Chloe 2385

CED	BW	WW	YW	RADG	DMI	YH	SC	HP	CEM	MILK	TEAT	UDDR	FL								
+6	+3.0	+102	+168	+32	+1.36	+3	+42	+12.6	+10	+21	+58	+61	+1.10								
MW	MH	DOC	CLAW	ANGLE	PAP	HS	CW	MARB	RE	FAT											
+89	+5	+23	+57	+41	+2.21	+53	+72	+1.67	+66	+035											
\$AxH	+255	\$AxJ	+203	\$M	+93	\$W	+97	\$F	+121	\$G	+101	\$B	+223	\$C	+382						
CED	BW	WW	YW	DMI	YH	SC	DOC	HP	CEM	MILK	MW	MH	CW	MB	REA	FAT	TEND	CLAW	ANGL	HS	PAP
77	85	1	7	83	49	83	12	25	64	76	20	40	2	3	18	31	92	67	5	72	77

Proven Males			
Top 1% WW	Top 2% Marb	Top 10% \$AxJ	Top 15% Angle
Top 2% \$AxH	Top 2% YW	Top 10% \$M	Top 15% CWT
Top 2% \$C	Top 3% \$G	Top 10% RADG	Top 20% UDDR
Top 2% \$W	Top 4% \$B	Top 15% \$F	Top 25% FL



**AUDLEY**  
**ANGUS**

752 Audley Lane  
Berryville, VA 22611



FIRST CLASS MAIL  
REQUESTED IN-HOME DATE OF APRIL 25, 2026



**AUDLEY**  
**ANGUS**

752 Audley Lane • Berryville, VA 22611  
General Manager - Turner Kobayashi  
Angus Manager - Matthew Deacon 540-460-6926  
deacon@audleyfarm.com • www.audleyfarm.com



LARRY COTTON 517-294-0777  
RYAN COTTON 706-206-8361  
MIKE GOTHARD 540-894-1055  
JERRY CRENSHAW 703-244-4767  
ZACK HILEMAN 540-460-2776

[www.cotton-associates.com](http://www.cotton-associates.com)



[www.CCI.live](http://www.CCI.live)  
405-400-9505 Text or Call  
[schedule@cci.live](mailto:schedule@cci.live)