



This is **B I G**

Thursday
MAY 21, 2026
6:00 P.M. EDT



RICHIE AND KELLEY LONGANECKER

6910 Lithia Pinecrest Rd • Lithia, FL 33547

813-927-9090 • pinelogger@aol.com

Dear Angus Friends,

One of the benefits of being a Registered Angus breeder is having the ability to meet new friends and build relationships along the way with some of the finest people in this country and we are proud to be considered a part of this group! We're also extremely proud and excited to be able to share with you some of the best genetics we've ever developed, most of which have taken nearly 30 years for us to fine tune and acquire.

For the first time we are offering an impressive donor selection from our B I G family matriarchs. We lead off with B I G Clarity of T276 B272. This female has already generated more than half a million in sales and is making an impact in herds across the country. She sells as Lot 1. Several daughters and elite heifer pregnancies sell as well.

In this B I G Time offering, we are selling so many donors and future donors that it is difficult to describe them all in a sale letter, so please start at Lot 1 and continue through the book for a genetic sampling of our years of hard work! This sale is **SPECTACULAR** and packed from front to back!

As you are reading through the EPD's, you will see that we have selected for performance females that excel in carcass traits. At Big Timber Cattle Company, we recognize the added value of genomic testing individual animals and every live animal we have to offer has been tested, or is in the process, and that data will be provided at sale time.

We are looking forward to this May 21, 2026 online production sale and want you to feel more than welcome to call with any and all questions.

In Appreciation,

Richie & Kelley Longanecker



RICHIE & KELLEY



BIG TIMBER CREW

IT'S BIG

MAY 21, 2026

6 p.m. EDT | CCI.LIVE



AUCTIONEER:
Dustin Layton
(405) 464-2455



MARKETING AGENT:
Parker Friedrich
(254) 413-2420



MARKETING AGENT:
Matt White
(530) 552-0650

BIG TIMBER CATTLE COMPANY:

Richie Longanecker
Big Timber Cattle Co. Owner - (813) 927-9090



Cassidy Eramo
Herd Manager

SALE BOOK PREPARED BY:

Parker Friedrich Marketing & Consulting
566 Hillcrest Dr. Stephenville, TX 76401
(254) 413-2420 mob - (254) 968-8162 fax/home
parkerfriedrich@earthlink.net



SALE CONSULTANT:

Zach Moffitt - 336-736-6340

SALE GPS LOCATION:

6910 Lithia Pinecrest Rd.,
Lithia, FL 33547

ACCOMMODATIONS:

Hampton Inn & Suites Brandon
hamptoninn3.hilton.com
10240 Causeway Blvd, Tampa, FL 33619 - (813) 497-4590

Embassy Suites by Hilton Tampa Brandon
embassysuites3.hilton.com
10220 Palm River Rd., Tampa, FL 33619 - (813) 653-1905

LOCAL AIRPORTS:

Tampa International Airport – 1 hour from Farm
4100 George J Bean Pkwy., Tampa, FL (813) 870-8700
Tampa Executive Airport
6530 Tampa Executive Airport Rd., Tampa (813) 626-1515

HERD HEALTH:

Cattle will be accompanied with proper health certificates for immediate shipment. An updated breeding and calving report will be available sale day and announcements from the auction block will take precedence over all printed material.

TERMS AND CONDITIONS:

The cattle will sell under the suggested Terms and Conditions of the American Angus Association (http://www.angus.org/Pub/suggested_sale_terms.pdf). All announcements from the auction block take precedence over printed materials.

TRUCKING:

Cattle can remain at the sale site until trucking arrangements can be made or pickup arranged. Known reliable truckers are available.

SALE SETTLEMENT:

All cattle are to be settled for prior to shipping out unless prior arrangement has been made with Big Timber Cattle Company. Terms are cash or check.

VIDEOS AND UPDATES WILL BE AVAILABLE ON



Bid Live Online

www.CCI.live - Watch the Sale

(405) 400-9505 Text/Call - schedule@cci.live
Find us on the App Store and Google Play
Over 35 years in livestock marketing!

WWW.CCI.LIVE

CATTLE WILL SELL IN SALE BOOK ORDER

EMBRYOS

Embryos are stored at Genetic Visions in Newville, PA



EPDs contained in the hard copy of this sale book were current as of print date. Digital versions of this sale book can be viewed online at www.angus.org and will have EPDs updated every Friday with the exception of EPD references in footnotes and photos. Any PDF downloads from the website will contain EPDs current as of the date downloaded. References: American Angus Association®, AHIR®, AngusLink®, CAB®, Pathfinder®, Parental Avg EPD - Average EPDs between the listed sire and dam. These values are not calculated through the weekly genetic evaluation. The actual EPDs for individual progeny are likely to vary from the expected values listed.

FEATURED



Green Garden Lady T276 - Dam of Lot 1

1

BIG Clarity of T276 B272

Birth Date: 12-10-2022 · Cow #*20525871 · Tattoo: B272

#Cherry Creek Land Grant
***Connealy Clarity**
 19555171 *Breshie of Conanga 6988

ANGUS
Owned by Angus Genetics

*Green Garden Lady T276
 19123914 Green Garden Lady Q277



#K C F Bennett Homestead
 Cherry Crk Eva B27 M
 #*Connealy Confidence Plus
 Brelly of Conanga 367
 #*A A R Ten X 7008 S A
 Green Garden Rita K078
 *Gardens Prime
 Green Garden Lady N275

\$M +103
 \$W +94
 \$B +240
 \$C +414

CED	BW	WW	YW	SC	DOC	CLAW	ANGLE	PAP	HS												
+12	-.9	+81	+145	+1.06	+23	+.38	+.49	+2.58	+.05												
HP	MLK	TEAT	UDDR	FL	\$EN	CW	MARB	RE	FAT												
+15.1	+32	+.42	+.40	+1.20	-20	+73	+1.75	+.92	+.025												
CED	BW	WW	YW	DMI	YH	SC	DOC	HP	CEM	MLK	MW	MH	CW	MRB	RE	FAT	TND	CLW	ANGL	HS	PAP
1	3	40	21	55	55	58	40	3	25	20	62	63	29	3	21	70	33	23	74	2	85

1/2 Interest with the Option to Double

A super impressive Clarity daughter that is a direct daughter of the legendary Big Timber and Four Sons donor Green Garden Lady T276, who has surpassed \$1 million in progeny sales. This super productive female has already produced the \$100,000 valued selection of Three Trees in last year's sale, the \$17,000 selection of Tineo Cattle in the same event, and a \$37,000 flush to Byrd Cattle, and a \$40,000 pregnancy selected by Boston Valley. The earning potential is extremely high here, folks. She has a track record. Take advantage of this opportunity. Join BIG Timber in discovering the countless opportunities or double your bid and take complete control of this genetic masterpiece. She sells due to calve 12/6/2026 to BIG Free Bird.

LOT 1

FEATURED



B 2 7 2 O F F S P R I N G



LOT 1A

1A

B I G Home Run of B272 B517

Birth Date: 08-11-2025 · Cow #*21327108 · Tattoo: B517

#*G A R Home Run 20508438	#*G A R Home Town	#*G A R Ashland #*Chair Rock Sure Fire 6095 #*GB Fireball 672 #*Williams Blackcap L 455-306 #Cherry Creek Land Grant *Breshie of Conanga 6988 *Gardens Cache Green Garden Lady Q277	\$M +97 \$W +98 \$B +286 \$C +468
*Connealy Clarity #*B I G Clarity of T276 B272 20525871	*Green Garden Lady T276		

CED	BW	WW	YW	SC	DOC	CLAW	ANGLE	PAP	HS												
+16	-.5	+86	+155	+1.26	+29	+43	+47	+2.20	-.13												
HP	MLK	TEAT	UDDR	FL	\$EN	CW	MARB	RE	FAT												
+14.4	+34	+45	+46	+1.20	-35	+89	+1.95	+1.78	-.029												
CED	BW	WW	YW	DMI	YH	SC	DOC	HP	CEM	MLK	MW	MH	CW	MRB	RE	FAT	TND	CLW	ANGL	HS	PAP
4	30	34	17	46	79	22	19	9	4	17	38	52	3	1	1	11	88	20	66	1	77

1/2 Interest with Option to Double

The Number 3 \$C female in the breed sired by the big-time producing herd sire GAR Home Run and a direct daughter of the beautifully designed, high performance producing Clarity daughter, who is a direct daughter of the legendary multimillion-dollar producer Green Garden Lady T276. A full sister to this female was the \$100,000 valued selection of Three Trees in the December 2025 sale, and the the \$17,000 selection of Tineo Cattle in the same event, and a \$37,000 flush to Byrd Cattle, and a \$40,000 pregnancy selected by Boston Valley. This super attractive female checks all of the boxes—calving ease, explosive early growth, elite carcass merit and elite maternal traits.

1AA

B I G Home Run of B272 B520

Birth Date: 08-25-2025 · Cow #*21333433 · Tattoo: B520

#*G A R Home Run 20508438	#*G A R Home Town	#*G A R Ashland #*Chair Rock Sure Fire 6095 #*GB Fireball 672 #*Williams Blackcap L 455-306 #Cherry Creek Land Grant *Breshie of Conanga 6988 *Gardens Cache Green Garden Lady Q277	\$M +83 \$W +92 \$B +259 \$C +419
*Connealy Clarity #*B I G Clarity of T276 B272 20525871	*Green Garden Lady T276		

CED	BW	WW	YW	SC	DOC	CLAW	ANGLE	PAP	HS												
+11	+.1	+86	+152	+4.6	+24	+47	+5.4	+1.04	+.32												
HP	MLK	TEAT	UDDR	FL	\$EN	CW	MARB	RE	FAT												
+13.4	+29	+43	+42	+1.11	-29	+84	+1.83	+1.02	+.030												
CED	BW	WW	YW	DMI	YH	SC	DOC	HP	CEM	MLK	MW	MH	CW	MRB	RE	FAT	TND	CLW	ANGL	HS	PAP
13	29	65	48	13	82	66	54	16	3	61	88	77	38	2	22	42	21	34	86	23	53

A super attractive, super balanced female by the big-time producing herd sire GAR Home Run and a direct daughter of the beautifully designed, high performance producing Clarity daughter, who is a direct daughter of the legendary multimillion-dollar producer Green Garden Lady T276. A full sister to this female was the \$100,000 valued selection of Three Trees in the December 2025 sale, and the \$17,000 selection of Tineo Cattle in the same event, and a \$37,000 flush to Byrd Cattle, and a \$40,000 pregnancy selected by Boston Valley.



LOT 1AA

B 2 7 2 O F F S P R I N G



LOT 1B

1B B I G Hustler of B272 B514

Birth Date: 08-08-2025 · Cow #*21327109 · Tattoo: B514

*SEO Ultra Provider
+*FF Rito Hustler 1B69
 20325042 *RMRK Rita 0237
ANGUS 3S
 *Connealy Clarity
+*B I G Clarity of T276 B272
 20525871 *Green Garden Lady T276

*G A R Momentum K836
 +*Chair Rock Progress 3023
 *Thomas Edison 6764
 +*RMRK Rita 8232
 #Cherry Creek Land Grant
 *Breshie of Conanga 6988
 *Gardens Cache
 Green Garden Lady Q277

\$M +93
 \$W +82
 \$B +254
 \$C +422

CED	BW	WW	YW	SC	DOC	CLAW	ANGLE	PAP	HS												
+10	+1.2	+73	+140	+1.20	+17	+3.8	+5.0	+0.2	+0.3												
HP	MLK	TEAT	UDDR	FL	\$EN	CW	MARB	RE	FAT												
+15.2	+34	+4.5	+39	+1.14	-15	+78	+2.13	+86	+069												
CED	BW	WW	YW	DMI	YH	SC	DOC	HP	CEM	MLK	MW	MH	CW	MRB	RE	FAT	TND	CLW	ANGL	HS	PAP
9	23	50	13	87	73	39	61	1	71	18	68	78	23	1	41	95	51	13	55	2	29

The Number 4 \$C and Number 4 marbling female in the breed sired by the \$1 million valued FF Rito Hustler that possesses her unique combination of CED and \$EN and is a direct daughter of the big-time performance producing Clarity daughter who is a direct daughter of the legendary multimillion-dollar producer Green Garden Lady T276. This female is loaded with performance, calving ease, efficiency, and maternal traits.

1C B I G First Avenue B272 B537

Birth Date: 11-09-2025 · Cow #*21404200 · Tattoo: B537

#*G A R Home Town
+*PEAK First Avenue
 20381985 +*Vintage Rita 0404
ANGUS 3S
 *Connealy Clarity
+*B I G Clarity of T276 B272
 20525871 *Green Garden Lady T276

#*G A R Ashland
 +*Chair Rock Sure Fire 6095
 #*GB Fireball 672
 +*44 Rita 6291
 #Cherry Creek Land Grant
 *Breshie of Conanga 6988
 *Gardens Cache
 Green Garden Lady Q277

\$M +84
 \$W +88
 \$B +248
 \$C +406

CED	BW	WW	YW	SC	DOC	CLAW	ANGLE	PAP	HS												
+7	+2.2	+89	+157	+1.75	+29	+4.8	+4.8	-.99	+0.6												
HP	MLK	TEAT	UDDR	FL	\$EN	CW	MARB	RE	FAT												
+14.3	+28	+4.2	+47	+1.12	-35	+83	+1.72	+1.06	+021												
CED	BW	WW	YW	DMI	YH	SC	DOC	HP	CEM	MLK	MW	MH	CW	MRB	RE	FAT	TND	CLW	ANGL	HS	PAP
27	66	26	9	62	30	11	22	7	32	56	18	27	17	5	19	68	60	70	75	3	17

Check out the elite performance on this female by the super rare and very limited PEAK First Avenue, and a direct daughter of the big-time performance producing Clarity daughter that is a direct daughter of the multimillion-dollar producer Green Garden Lady T276. You have to appreciate the elite combination of explosive growth, elite PAP and elite carcass merit on this female.



LOT 1C

B 2 7 2 P R E G N A N C I E S



G A R Grand Slam - Sire of Lot 1D Pregnancy



B I G Clarity of T276 B272

1D

Heifer Pregnancy

Due Date: 10-08-2026

+*G A R Home Run

#*G A R Home Town

*G A R Grand Slam

+*Williams F Blackbird 705-429

21179283

+*G A R Sunbeam 332

+*G A R Sunbeam

\$M +103

*Connealy Clarity

+*G A R Identified N910

\$W +99

+*B I G Clarity of T276 B272

#Cherry Creek Land Grant

\$B +269

20525871

*Green Garden Lady T276

*Breshie of Conanga 6988

\$C +451

*Green Garden Lady T276

*Gardens Cache

Green Garden Lady Q277

Parent Averages

CED	BW	WW	YW	SC	DOC	CLAW	ANGLE	PAP	HS
+16	-1.9	+86	+152	+96	+25	+53	+55	+1.74	+1.16
HP	MLK	TEAT	UDDR	FL	\$EN	CW	MARB	RE	FAT
+16.1	+30	+46	+46	+1.15	-18	+81	+2.09	+1.11	+0.32

A heifer calf pregnancy by the record setting \$800,000 GAR Grand Slam and the high-performance producing Clarity daughter that stems directly from the legendary multimillion-dollar producer Green Garden Lady T276. The sky is the limit here, folks. This female has produced elite genomics in all her offspring. This one has unlimited potential. Sells due to calve 10/8/2026 in a reliable recip.



Wilks Crick 3708 - Sire of Lot 1E Pregnancy

1E

Heifer Pregnancy

Due Date: 08-23-2026

+*Ingram Heisman 0566

#*Connealy Confidence Plus

*Wilks Crick 3708

+*RB Lady Denver 167-453

20753043

+*DBA Rita 1034

#*G A R Home Town

\$M +102

*Connealy Clarity

+*Pine View Rita E093

\$W +100

+*B I G Clarity of T276 B272

#Cherry Creek Land Grant

\$B +257

20525871

*Green Garden Lady T276

*Breshie of Conanga 6988

\$C +435

*Green Garden Lady T276

*Gardens Cache

Green Garden Lady Q277

Parent Averages

CED	BW	WW	YW	SC	DOC	CLAW	ANGLE	PAP	HS
+9	+1	+88	+154	+98	+21	+39	+44	+2.07	+2.22
HP	MLK	TEAT	UDDR	FL	\$EN	CW	MARB	RE	FAT
+13.4	+33	+58	+56	+1.13	-21	+90	+1.69	+1.25	+0.28

A heifer calf pregnancy by the Wilks Ranch herd sire Crick, whose semen is super limited and extremely rare, and the high-performance producing Clarity daughter that is a direct daughter of the legendary multimillion-dollar producer Green Garden Lady T276. The early reports on the Crick cattle have been outstanding, and they seem to possess a deadly, razor sharp neck and front end and beautiful patterns. Sells due to calve 8/23/2026 in a reliable recip.

1F

Heifer Pregnancy

Due Date: 10-24-2026

+*PEAK Stapleton

*SG Salvation

*G A R Diligent

+*G A R Ashland 3159

21183239

+*G A R Sunbeam 332

+*G A R Sunbeam

\$M +103

*Connealy Clarity

+*G A R Identified N910

\$W +93

+*B I G Clarity of T276 B272

#Cherry Creek Land Grant

\$B +253

20525871

*Green Garden Lady T276

*Breshie of Conanga 6988

\$C +430

*Green Garden Lady T276

*Gardens Cache

Green Garden Lady Q277

Parent Averages

CED	BW	WW	YW	SC	DOC	CLAW	ANGLE	PAP	HS
+14	-1.6	+79	+140	+59	+25	+43	+53	+98	+3
HP	MLK	TEAT	UDDR	FL	\$EN	CW	MARB	RE	FAT
+13	+30	+54	+46	+1.16	-10	+78	+1.75	+1.31	+0.31

A heifer calf pregnancy by the \$300,000 GAR Diligent and the high-performance, good-looking Clarity daughter that is a direct daughter of the legendary multimillion-dollar producer Green Garden Lady T276. One thing is certain, this calf has unlimited potential of being Number 1 for multiple traits and being a super balanced, very complete package. Sells due to calve 10/24/2026 in a reliable recip.

B 2 7 2 P R E G N A N C I E S



Kelley

- Dam of Lot 1D Pregnancy



G A R Alpha - Sire of Lot 1G Pregnancy

1G

Heifer Pregnancy

Due Date: 08-22-2026

*E W A Captain	#*KB-Full Measure C40		
+*G A R Alpha	+*E W A 8113 of 531 Method		
20825957	*E W A 102 of 848 Home Town	#*G A R Home Town	\$M +96
	*Conneely Clarity	+*E W A 848 of 678 Peyton	\$W +96
+*B I G Clarity of T276 B272	#Cherry Creek Land Grant	*Breshie of Conanga 6988	\$B +259
20525871	*Green Garden Lady T276	*Gardens Cache	\$C +431
		Green Garden Lady Q277	

Parent Averages										
CED	BW	WW	YW	SC	DOC	CLAW	ANGLE	PAP	HS	
+14	-.7	+81	+146	+63	+23	+43	+46	+1.75	+1	
HP	MLK	TEAT	UDDR	FL	\$EN	CW	MARB	RE	FAT	
+14.1	+35	+42	+4	+1.16	-22	+82	+1.84	+1.01	+0.15	

A heifer calf pregnancy by GAR Alpha and the good looking, high performance producing Clarity daughter that is a direct daughter of the legendary multimillion-dollar producer Green Garden Lady T276. One thing is certain; this heifer calf is backed by generations of elite performance and elite carcass merit on both sides of this pedigree. She sells due to calve 8/22/2026 in a reliable recip.



G A R Grid Maker L1071 - Sire of Lot 1H Pregnancy

1H

Heifer Pregnancy

Due Date: 08-22-2026

#*GB Fireball 672	+*G A R Sure Fire 6404		
+*G A R Grid Maker L1071	*GB Anticipation 432		
20370359	+*Chair Rock Sure Fire 6095	##*G A R Sure Fire	\$M +74
	*Conneely Clarity	+*Chair Rock Progress 3005	\$W +95
+*B I G Clarity of T276 B272	#Cherry Creek Land Grant	*Breshie of Conanga 6988	\$B +263
20525871	*Green Garden Lady T276	*Gardens Cache	\$C +415
		Green Garden Lady Q277	

Parent Averages										
CED	BW	WW	YW	SC	DOC	CLAW	ANGLE	PAP	HS	
+11	+2	+86	+153	+1.11	+24	+51	+5	+54	-1	
HP	MLK	TEAT	UDDR	FL	\$EN	CW	MARB	RE	FAT	
+13.9	+34	+41	+39	+1.09	-38	+83	+2.03	+1.09	+0.07	

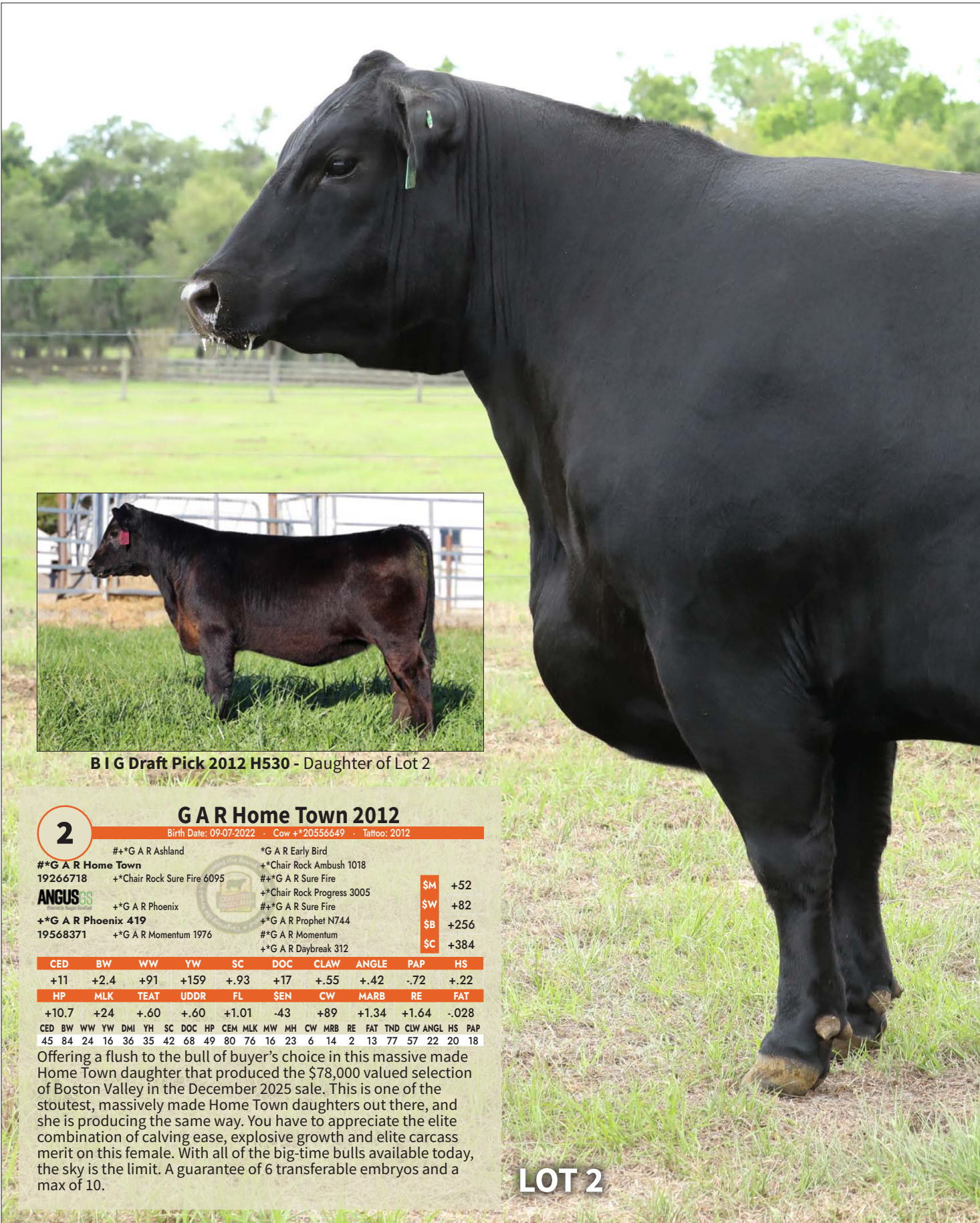
A heifer calf pregnancy by the big-time producing FB Genetics sire GAR Grid Maker and the high-performance producing Clarity daughter that is a direct daughter of the multimillion-dollar producer Green Garden Lady T276. This is a great genetic combination here, folks. Both sides of this pedigree are stacked and jacked. There is untapped and unlimited potential here. Sells due to calve 8/22/2026 in a reliable recip.



G A R Diligent - Sire of Lot 1F Pregnancy

ONLY SELLING 3 PREGNANCIES

2012 FLUSH



B I G Draft Pick 2012 H530 - Daughter of Lot 2

2

G A R Home Town 2012

Birth Date: 09-07-2022 · Cow #*20556649 · Tattoo: 2012

#*G A R Ashland	*G A R Early Bird	\$M	+52
#*G A R Home Town	*Chair Rock Ambush 1018	\$W	+82
19266718	**Chair Rock Sure Fire 6095	\$B	+256
ANGUS <small>55</small>	*Chair Rock Progress 3005	\$C	+384
19568371	**G A R Phoenix		
	#*G A R Sure Fire		
	*G A R Prophet N744		
	#*G A R Momentum		
	*G A R Daybreak 312		

CED	BW	WW	YW	SC	DOC	CLAW	ANGLE	PAP	HS												
+11	+2.4	+91	+159	+93	+17	+55	+42	-.72	+22												
HP	MLK	TEAT	UDDR	FL	\$EN	CW	MARB	RE	FAT												
+10.7	+24	+60	+60	+1.01	-43	+89	+1.34	+1.64	-.028												
CED	BW	WW	YW	DMI	YH	SC	DOC	HP	CEM	MLK	MW	MH	CW	MRB	RE	FAT	TND	CLW	ANGL	HS	PAP
45	84	24	16	36	35	42	68	49	80	76	16	23	6	14	2	13	77	57	22	20	18

Offering a flush to the bull of buyer's choice in this massive made Home Town daughter that produced the \$78,000 valued selection of Boston Valley in the December 2025 sale. This is one of the stoutest, massively made Home Town daughters out there, and she is producing the same way. You have to appreciate the elite combination of calving ease, explosive growth and elite carcass merit on this female. With all of the big-time bulls available today, the sky is the limit. A guarantee of 6 transferable embryos and a max of 10.

LOT 2

2012 FLUSH



Kelley

2012 PROGENY



LOT 2A

2A

BIG Draft Pick 2012 H534

Birth Date: 08-28-2025 · Cow +*21339865 · Tattoo: H534

*Connealy Clarity

#Cherry Creek Land Grant

+*PEAK Draft Pick

*Breshie of Conanga 6988

20513315 +*Vintage Rita 0404

#*GB Fireball 672

ANGUS 36

+*44 Rita 6291

#*G A R Home Town

#**G A R Ashland

+*G A R Home Town 2012

+*Chair Rock Sure Fire 6095

20556649 +*G A R Phoenix 419

+*G A R Phoenix

+*G A R Momentum 1976

\$M	+92
\$W	+90
\$B	+287
\$C	+464

CED	BW	WW	YW	SC	DOC	CLAW	ANGLE	PAP	HS												
+9	+2.6	+93	+156	+1.39	+18	+4.7	+3.7	-.05	+0.03												
HP	MLK	TEAT	UDDR	FL	\$EN	CW	MARB	RE	FAT												
+13.0	+23	+58	+66	+1.11	-23	+104	+1.81	+1.53	+0												
CED	BW	WW	YW	DMI	YH	SC	DOC	HP	CEM	MLK	MW	MH	CW	MRB	RE	FAT	TND	CLW	ANGL	HS	PAP
21	64	28	50	27	36	19	54	13	78	86	72	60	2	3	1	22	27	22	7	3	13

1/2 Interest with the Option to Double

Check out this super impressive female that is one of only two females in the breed sired by PEAK Draft Pick with her unique combination of WW, YW, PAP, CW, Marb, and RE that is a full sister to the \$78,000 valued selection of Boston Valley in the December 2025 sale, anchored by the massive made, good looking Home Town daughter. This female is just flat good on paper and on the hoof. This is the kind that is hard to sell. Join BIG Timber in discovering the countless opportunities this female possesses or double your bid and put your program in the driver's seat.

2AA

BIG Draft Pick 2012 H532

Birth Date: 08-23-2025 · Cow +*21339862 · Tattoo: H532

*Connealy Clarity

#Cherry Creek Land Grant

+*PEAK Draft Pick

*Breshie of Conanga 6988

20513315 +*Vintage Rita 0404

#*GB Fireball 672

ANGUS 36

+*44 Rita 6291

#*G A R Home Town

#**G A R Ashland

+*G A R Home Town 2012

+*Chair Rock Sure Fire 6095

20556649 +*G A R Phoenix 419

+*G A R Phoenix

+*G A R Momentum 1976

\$M	+74
\$W	+87
\$B	+281
\$C	+438

CED	BW	WW	YW	SC	DOC	CLAW	ANGLE	PAP	HS												
+12	+6	+85	+147	+56	+23	+5.4	+4.4	-1.38	+0.16												
HP	MLK	TEAT	UDDR	FL	\$EN	CW	MARB	RE	FAT												
+11.9	+27	+56	+57	+1.08	-32	+92	+1.99	+1.28	+0.18												
CED	BW	WW	YW	DMI	YH	SC	DOC	HP	CEM	MLK	MW	MH	CW	MRB	RE	FAT	TND	CLW	ANGL	HS	PAP
10	24	54	52	33	67	58	20	31	49	52	61	66	20	1	16	64	50	63	22	7	8

A double digit calving ease Draft Pick daughter that is a full sister to the \$78,000 valued selection of Boston Valley in the December 2025 sale, anchored by the massive made, good looking Home Town daughter. You have to appreciate the combination of calving ease, explosive growth, elite PAP, and elite carcass merit on this female.



LOT 2AA

2012 PROGENY



2B **B I G Majority of 2012 H528**
 Birth Date: 08-15-2025 · Cow +*21328261 · Tattoo: H528

*Conneely Clarity #Cherry Creek Land Grant
 +*FHCC Majority 1551 *Breshie of Conanga 6988
 20119568 +*Woodland Blackcap Lady 84 #**G A R Sure Fire
ANGUS #**G A R Home Town #**G A R Ashland
 #*G A R Home Town 2012 +*Chair Rock Sure Fire 6095
 20556649 +*G A R Phoenix +*G A R Momentum 1976

\$M	+92
\$W	+112
\$B	+250
\$C	+416

2BB **B I G Majority of 2012 H533**
 Birth Date: 08-25-2025 · Cow +*21339863 · Tattoo: H533

*Conneely Clarity #Cherry Creek Land Grant
 +*FHCC Majority 1551 *Breshie of Conanga 6988
 20119568 +*Woodland Blackcap Lady 84 #**G A R Sure Fire
ANGUS #**G A R Home Town #**G A R Ashland
 #*G A R Home Town 2012 +*Chair Rock Sure Fire 6095
 20556649 +*G A R Phoenix +*G A R Momentum 1976

\$M	+70
\$W	+99
\$B	+271
\$C	+421

CED	BW	WW	YW	SC	DOC	CLAW	ANGLE	PAP	HS												
+13	+8	+94	+164	+1.83	+21	+43	+42	-1.28	+26												
HP	MLK	TEAT	UDDR	FL	\$EN	CW	MARB	RE	FAT												
+12.7	+37	+76	+67	+1.02	-29	+85	+1.70	+1.47	-0.28												
CED	BW	WW	YW	DMI	YH	SC	DOC	HP	CEM	MLK	MW	MH	CW	MRB	RE	FAT	TND	CLW	ANGL	HS	PAP
37	37	21	12	89	67	8	48	33	97	12	47	69	6	1	2	6	71	9	23	26	6

CED	BW	WW	YW	SC	DOC	CLAW	ANGLE	PAP	HS												
+14	+1.0	+99	+168	+1.36	+22	+37	+42	+60	+24												
HP	MLK	TEAT	UDDR	FL	\$EN	CW	MARB	RE	FAT												
+12.6	+27	+81	+74	+1.00	-52	+104	+1.38	+1.33	-0.27												
CED	BW	WW	YW	DMI	YH	SC	DOC	HP	CEM	MLK	MW	MH	CW	MRB	RE	FAT	TND	CLW	ANGL	HS	PAP
20	61	4	3	69	12	18	26	22	90	62	5	11	1	9	6	6	86	4	33	15	44

A super complete, good looking Majority daughter that stems from a dam that produced the \$78,000 valued selection of Boston Valley in last year's sale, who is a good looking, massive made Home Town daughter. Check out the elite management traits combined with her double digit calving ease, explosive growth curve and elite carcass merit. This one is super complete on paper and on the hoof.

The only female in the breed sired by FHCC Majority with her combination of CED, WW, and YW that stems from a dam that produced the \$78,000 valued selection of Boston Valley in last year's sale, who is a good looking, massive made Home Town daughter. This female is loaded with performance on paper and on the hoof. Just analyze the rib shape and massive top she possesses.

2C **B I G Heat Seeker 2012 H539**
 Birth Date: 10-05-2025 · Cow +*21384667 · Tattoo: H539

*Mill Brae Identified 4031 #Koupals B&B Identity
 +*Baldridge Heat Seeker H925 *Mill Brae Pro Blackcap 1092
 19806485 +*Baldridge Isabel E048 #*Conneely Confidence Plus
ANGUS #*G A R Home Town #**G A R Ashland
 #*G A R Home Town 2012 +*Chair Rock Sure Fire 6095
 20556649 +*G A R Phoenix +*G A R Momentum 1976

\$M	+82
\$W	+90
\$B	+260
\$C	+419



CED	BW	WW	YW	SC	DOC	CLAW	ANGLE	PAP	HS												
+9	+1.6	+88	+155	+1.39	+15	+34	+41	+70	+23												
HP	MLK	TEAT	UDDR	FL	\$EN	CW	MARB	RE	FAT												
+12.2	+27	+76	+73	+1.02	-27	+88	+1.62	+1.30	-0.11												
CED	BW	WW	YW	DMI	YH	SC	DOC	HP	CEM	MLK	MW	MH	CW	MRB	RE	FAT	TND	CLW	ANGL	HS	PAP
49	72	22	12	50	42	31	72	49	87	70	54	42	16	1	18	25	88	5	16	7	38

This female is one of only two Heat Seeker daughters in the breed with her unique combination of WW, YW, Claw, Angle, Hair Shed, CW, Marb, and RE that stems from a dam that produced the \$78,000 valued selection of Boston Valley in last year's sale, who is a good looking, massive made Home Town daughter. You have to appreciate the massive rib shape, long spine and elegant front end on this one.

B 3 0 1 D O N O R



LOT 3

Kelley

3

B I G Paragon of 0D13 B301

Birth Date: 01-11-2023 · Cow +*20556463 · Tattoo: B301

+*G A R Combustion	#*G A R Sure Fire	
+*Ankonian Paragon OC4	+*G A R Momentum 1724	
19719477	+*G A R Early Bird N985	
	+*G A R Complete N281	\$M +61
ANGUSGS	*EXAR Stallion 7986	\$W +81
Powered by MyAgriBook	+*FF Rita 5B63 of 356H 3S10	\$B +267
+*FF Rita 0D13 of 8M10 Radiant	#*Byergo Black Magic 3348	\$C +407
19831556	+*FF Rita 3R30 of 9Q23 5M2	

CED	BW	WW	YW	SC	DOC	CLAW	ANGLE	PAP	HS												
+11	+9	+79	+151	+1.20	+17	+64	+54	+2.99	+47												
HP	MLK	TEAT	UDDR	FL	\$EN	CW	MARB	RE	FAT												
+12.6	+29	+06	+16	+1.05	-24	+84	+1.65	+1.48	-.027												
CED	BW	WW	YW	DMI	YH	SC	DOC	HP	CEM	MLK	MW	MH	CW	MRB	RE	FAT	TND	CLW	ANGL	HS	PAP
24	55	16	2	54	21	3	43	27	8	36	19	9	2	8	1	25	76	84	80	46	88



FF Rita 0D13 of 8M10 Radiant - Dam of Lot 3

A double digit calving ease, high performance Paragon daughter that is a direct daughter of the deceased Haws Farm donor Rita 0D13, who is a direct daughter of the Texeria donor Rita 8M10, all anchored by the legendary multimillion-dollar producer at Friendship Farms, FF Rita 3R30. You have to admire the elite combination of growth, calving ease and carcass merit on this good-looking female. She sells due to calve 8/22/26 to Majority.



B 3 0 1 P R O G E N Y



LOT 3A

Kelley

3A **B I G Draft Pick B301 H525**
 Birth Date: 08-03-2025 · Cow +*21328955 · Tattoo: H525

*Connealy Clarity #Cherry Creek Land Grant
 +***PEAK Draft Pick** *Breshie of Conanga 6988
 20513315 +*Vintage Rita 0404 #*CB Fireball 672
 ANGUSGS +*44 Rita 6291 \$M +102
 +*Ankonian Paragon OC4 +*G A R Combustion \$W +103
 +***B I G Paragon of OD13 B301** +*G A R Early Bird N985 \$B +270
 20556463 +*FF Rita OD13 of 8M10 Radiant +*FF Rito Radiant 8S1 \$C +452
 +*FF Rita 8M10 of 3R30 Magic

CED	BW	WW	YW	SC	DOC	CLAW	ANGLE	PAP	HS												
+10	+3	+88	+157	+1.09	+25	+54	+42	+1.61	+36												
HP	MLK	TEAT	UDDR	FL	\$EN	CW	MARB	RE	FAT												
+13.3	+34	+26	+40	+1.20	-21	+88	+1.99	+1.45	+050												
CED	BW	WW	YW	DMI	YH	SC	DOC	HP	CEM	MLK	MW	MH	CW	MRB	RE	FAT	TND	CLW	ANGL	HS	PAP
21	22	28	11	56	32	14	21	16	70	12	76	68	8	1	2	83	78	43	20	27	60

1/2 Interest with Option to Double
 The Number 3 \$C female in the breed sired by Peak Draft Pick with her combination of CED and \$M that stems from a dam that combines Paragon, the Teixeira donor Rita 8M10 and the legendary multimillion-dollar producer at Friendship Farms, FF Rita 3R30. This long spined, deep bodied female possesses an elite combination of CED, growth, carcass merit and elite maternal traits. This one needs some FSH in her future.

3B **B I G Home Run of B301 B507**
 Birth Date: 03-08-2025 · Bull *21212305 · Tattoo: B507

#*G A R Home Town #**G A R Ashland
 +***G A R Home Run** +*Chair Rock Sure Fire 6095
 20508438 +*Williams F Blackbird 705-429 #*CB Fireball 672
 ANGUSGS +*Williams Blackcap L 455-306 \$M +62
 +*Ankonian Paragon OC4 +*G A R Combustion \$W +87
 +***B I G Paragon of OD13 B301** +*G A R Early Bird N985 \$B +274
 20556463 +*FF Rita OD13 of 8M10 Radiant +*FF Rito Radiant 8S1 \$C +417
 +*FF Rita 8M10 of 3R30 Magic

CED	BW	WW	YW	SC	DOC	CLAW	ANGLE	PAP	HS												
+9	+1.1	+87	+162	+2.45	+21	+57	+48	+3.03	+11												
HP	MLK	TEAT	UDDR	FL	\$EN	CW	MARB	RE	FAT												
+10.9	+27	+38	+45	+99	-30	+90	+1.78	+1.63	-.028												
CED	BW	WW	YW	DMI	YH	SC	DOC	HP	CEM	MLK	MW	MH	CW	MRB	RE	FAT	TND	CLW	ANGL	HS	PAP
52	65	12	2	82	20	1	32	32	43	58	18	26	1	2	1	6	38	58	54	5	83

A big-time marbling, super balanced herd sire prospect here, folks, by GAR Home Run and from a dam that is a powerfully made Paragon daughter that is a direct daughter of the deceased Haws Angus donor, Rita OD13, who traces back to the legendary multimillion-dollar producer FF Rita 3R30. You have to appreciate the elite growth and elite carcass merit on this stud.



LOT 3B

R 9 1 P R O G E N Y



G A R Identified R91 - Dam of Lots 4A-4C

4A **B I G Wallace of R91 B600**
 Birth Date: 01-01-2026 · Cow +*21469662 · Tattoo: B600

*Basin Jameson 1076	+*Basin Deposit 6249		
+*G A R Wallace 20617150	+*Goode K263 Prophet 0323	+*Basin Joy 9140	+*G A R Prophet K263
ANGUS 3S	#*Mill Brae Identified 4031	+*Goode Sunrise 7805	#*Koupals B&B Identity
+*G A R Identified R91 20380291	+*G A R Sure Fire 427	*Mill Brae Pro Blackcap 1092	**G A R Sure Fire
		+*Chair Rock Prophet 3054	

\$M	+94
\$W	+108
\$B	+269
\$C	+443

CED	BW	WW	YW	SC	DOC	CLAW	ANGLE	PAP	HS
+11	-.7	+84	+149	+1.04	+15	+4.5	+3.4	+3.33	+21
HP	MLK	TEAT	UDDR	FL	\$EN	CW	MARB	RE	FAT
+11.3	+38	+.62	+.56	+.96	-12	+80	+2.38	+1.10	+.078

The Number 1 \$C female in the breed with her unique combination of CED and \$EN sired by GAR Wallace that is a direct daughter of the deceased BIG Timber donor GAR Identified R91 who produced the \$220,000 valued BIG Maga and the \$47,000 selection of Grimmus Cattle in the May 2025 sale, BIG Home Run of R91 B440. This impressive female possesses an elite package of calving ease, explosive early growth, elite efficiency, excellent management traits and elite carcass merit. She sells with Recip 81638.



4B **B I G First Avenue R91 B509**
 Birth Date: 08-03-2025 · Cow +*21326053 · Tattoo: B509

#*G A R Home Town	**G A R Ashland		
+*PEAK First Avenue 20381985	+*Vintage Rita 0404	+*Chair Rock Sure Fire 6095	+*GB Fireball 672
ANGUS 3S	#*Mill Brae Identified 4031	+*44 Rita 6291	**Koupals B&B Identity
+*G A R Identified R91 20380291	+*G A R Sure Fire 427	*Mill Brae Pro Blackcap 1092	**G A R Sure Fire
		+*Chair Rock Prophet 3054	

\$M	+76
\$W	+92
\$B	+249
\$C	+399

CED	BW	WW	YW	SC	DOC	CLAW	ANGLE	PAP	HS
+4	+2.5	+86	+151	+1.48	+20	+.51	+.45	-1.34	+.26
HP	MLK	TEAT	UDDR	FL	\$EN	CW	MARB	RE	FAT
+11.9	+31	+.43	+.32	+1.00	-22	+88	+1.63	+1.20	+.014

A big-time marbling First Avenue daughter that is a direct daughter of the deceased BIG Timber donor GAR Identified R91 who produced the \$220,000 valued BIG Maga and the \$47,000 selection of Grimmus Cattle in the May 2025 sale, BIG Home Run of R91 B440. Check out this female's explosive early growth curve combined with elite PAP and elite carcass merit.

4C **Heifer Pregnancy**
 Due Date: 10-24-2026

+*PEAK Stapleton	*SG Salvation		
+*G A R Diligent 21183239	+*G A R Sunbeam 332	+*G A R Ashland 3159	+*G A R Sunbeam
ANGUS 3S	#*Mill Brae Identified 4031	+*G A R Identified N910	**Koupals B&B Identity
+*G A R Identified R91 20380291	+*G A R Sure Fire 427	*Mill Brae Pro Blackcap 1092	**G A R Sure Fire
		+*Chair Rock Prophet 3054	

\$M	+89
\$W	+89
\$B	+249
\$C	+411

CED	BW	WW	YW	SC	DOC	CLAW	ANGLE	PAP	HS
+12	-.8	+77	+137	+.88	+22	+.45	+.49	+1.01	+.35
HP	MLK	TEAT	UDDR	FL	\$EN	CW	MARB	RE	FAT
+11.3	+29	+.56	+.51	+1.06	-9	+80	+1.64	+1.21	+.045

A heifer calf pregnancy by the \$300,000 GAR Diligent and the deceased BIG Timber donor GAR Identified R91 who produced the \$220,000 valued BIG Maga and the \$47,000 selection of Grimmus Cattle in the May 2025 sale, BIG Home Run of R91 B440. The sky is the limit here, folks. This mating is a clash of the titans genetically. Sells due to calve 10/24/2026 in a reliable recip.



WEANED HEIFERS



LOT 5

Kellen

5

B I G Ambitious of 3019 B513

Birth Date: 08-08-2025 · Cow +*21327291 · Tattoo: B513

*SEO Ultra Provider
 +*FF Rito Ambitious
 20437882 *RMRK Rita 0237
ANGUS
 +*HPCA Veracious
 +*CoX Rita 3019
 20596571 *G A R Momentum 2657



+*G A R Momentum K836
 +*Chair Rock Progress 3023
 *Thomas Edison 6764
 +*RMRK Rita 8232
 #*Mill Brae Identified 4031
 +*H P C A Sunrise A246
 #*G A R Momentum
 +*G A R Early Bird N1065

\$M +68
 \$W +88
 \$B +258
 \$C +403

CED	BW	WW	YW	SC	DOC	CLAW	ANGLE	PAP	HS												
+11	+2.1	+78	+133	+75	+13	+53	+47	-.03	+.61												
HP	MLK	TEAT	UDDR	FL	\$EN	CW	MARB	RE	FAT												
+8.9	+33	+45	+45	+1.00	-15	+70	+2.24	+.76	+.029												
CED	BW	WW	YW	DMI	YH	SC	DOC	HP	CEM	MLK	MW	MH	CW	MRB	RE	FAT	TND	CLW	ANGL	HS	PAP
33	49	58	56	8	74	11	63	73	35	11	83	70	24	1	57	58	60	81	49	53	16

The Number 12 marbling female in the breed sired by the record setting FF Rito Ambitious and from a dam that is a beautifully designed Veracious daughter who is a direct daughter of the \$50,000 G A R Momentum 2657, who is the dam of the ABS Global sire Opus One. This female is fault free on paper and on the hoof, with 19 different traits in the top 25% of the breed.

6

B I G Breakaway of B301 H526

Birth Date: 08-10-2025 · Cow +*21328957 · Tattoo: H526

+*Beal Breakthrough
 +*4 Sons Breakaway
 20569806 *Mill Brae I Karama 7237
ANGUS
 +*Ankonian Paragon OC4
 +*B I G Paragon of OD13 B301
 20556463 +*FF Rita OD13 of 8M10 Radiant



+*G A R Prophet K263
 *H P C A Sure Fire S6
 #*Mill Brae Identified 4031
 Mill Brae Stim Karama 3025
 +*G A R Combustion
 +*G A R Early Bird N985
 +*FF Rito Radiant 8S1
 +*FF Rita 8M10 of 3R30 Magic

\$M +68
 \$W +87
 \$B +247
 \$C +388

CED	BW	WW	YW	SC	DOC	CLAW	ANGLE	PAP	HS												
+10	+1.7	+88	+159	+1.68	+27	+53	+43	+3.68	+.38												
HP	MLK	TEAT	UDDR	FL	\$EN	CW	MARB	RE	FAT												
+8.4	+26	+28	+35	+1.07	-29	+92	+1.30	+1.31	+.005												
CED	BW	WW	YW	DMI	YH	SC	DOC	HP	CEM	MLK	MW	MH	CW	MRB	RE	FAT	TND	CLW	ANGL	HS	PAP
43	71	4	2	68	10	9	2	84	10	67	19	7	1	22	1	31	32	45	17	44	93

A double digit calving ease female by the \$150,000 Four Sons and GMC sire Breakaway, and from a dam that combines Paragon and the deceased Haws Angus donor, Rita OD13, who has surpassed \$500,000 in progeny sales. This female is ultra complete on paper with 20 different traits in the top 20% of the breed, and she possesses a near perfect structure, elegant front end and massive top.



LOT 6

12/21

WEANED HEIFERS



LOT 7

7

B I G Kindred of B102 B515

Birth Date: 08-09-2025 · Cow +*21326055 · Tattoo: B515

#*GB Fireball 672	+*G A R Sure Fire 6404		
*K A Kindred	*GB Anticipation 432	\$M	+77
20446645	+*E W A High Weigh 3123	\$W	+73
	K A Miss Discovery 5163	\$B	+239
	#*G A R Home Town	\$C	+387
	#**G A R Ashland		
+*B I G Home Town of T276 B102	+*Chair Rock Sure Fire 6095		
19947596	*Green Garden Lady T276		
	*Gardens Cache		
	Green Garden Lady Q277		

A super attractive, extremely balanced female by Kindred and a direct daughter of the \$100,000 valued BIG Timber and Four Sons donor, B I G Home Town of T276 B102, who produced the \$50,000 selection of Spruce Mountain and Maple Lane Farms in the 2025 Four Sons sale and is a direct daughter of the legendary multimillion-dollar producer Green Garden Lady T276.

CED	BW	WW	YW	SC	DOC	CLAW	ANGLE	PAP	HS												
+7	+1	+72	+137	+48	+18	+57	+50	+1.17	-.05												
HP	MLK	TEAT	UDDR	FL	\$EN	CW	MARB	RE	FAT												
+13.5	+27	+70	+65	+1.06	-16	+65	+1.82	+77	+0.23												
CED	BW	WW	YW	DMI	YH	SC	DOC	HP	CEM	MLK	MW	MH	CW	MRB	RE	FAT	TND	CLW	ANGL	HS	PAP
67	30	80	29	61	78	56	30	51	44	66	86	87	42	1	47	74	97	54	32	1	44



B I G Home Town of T276 B102 - Dam of Lot 7

WEANED HEIFERS



LOT 8A

8A **B I G Wizard of 053 B540**
 Birth Date: 11-18-2025 · Cow +*21415272 · Tattoo: B540

+*Beal Breakthrough
 +*ST Wizard 1585
 21000000
 ANGUS360
 +*Ogeechee Identified 053
 20010646

+*G A R Prophet K263
 +*H P C A Sure Fire S6
 +*Connealy Clarity
 +*G A R Ashland 988
 +*Koupals B&B Identity
 +*Mill Brae Pro Blackcap 1092
 +*G A R Sure Fire
 +*G A R Daybreak A3010

\$M	+99
\$W	+82
\$B	+243
\$C	+414

CED	BW	WW	YW	SC	DOC	CLAW	ANGLE	PAP	HS												
+9	+2.4	+82	+146	+3.02	+17	+4.4	+3.9	+1.29	+3.9												
HP	MLK	TEAT	UDDR	FL	\$EN	CW	MARB	RE	FAT												
+13.5	+27	+90	+88	+1.06	-16	+81	+1.75	+1.33	+0.86												
CED	BW	WW	YW	DMI	YH	SC	DOC	HP	CEM	MLK	MW	MH	CW	MRB	RE	FAT	TND	CLW	ANGL	HS	PAP
61	85	21	16	88	35	1	72	10	48	40	75	47	4	2	3	85	55	8	21	39	36

The only female in the breed sired by the STgenetics sire Wizard with her combination of CED, WW, Claw, Angle, Teat, Udder, \$EN, \$M, Marb and RE that stems from a dam that combines the two Pathfinder sires Identified and Sure Fire. This impressive female possesses an elite 20 different traits in the top 20% of the breed.



LOT 9

8B **B I G Wizard of 053 B538**
 Birth Date: 11-12-2025 · Cow +*21410611 · Tattoo: B538

+*Beal Breakthrough
 +*ST Wizard 1585
 21000000
 ANGUS360
 +*Ogeechee Identified 053
 20010646

+*G A R Prophet K263
 +*H P C A Sure Fire S6
 +*Connealy Clarity
 +*G A R Ashland 988
 +*Koupals B&B Identity
 +*Mill Brae Pro Blackcap 1092
 +*G A R Sure Fire
 +*G A R Daybreak A3010

\$M	+103
\$W	+95
\$B	+229
\$C	+400

CED	BW	WW	YW	SC	DOC	CLAW	ANGLE	PAP	HS												
+10	+1.4	+90	+155	+1.75	+23	+4.5	+4.6	+3.77	+2.4												
HP	MLK	TEAT	UDDR	FL	\$EN	CW	MARB	RE	FAT												
+14.2	+25	+67	+71	+1.07	-17	+84	+1.39	+1.38	+0.23												
CED	BW	WW	YW	DMI	YH	SC	DOC	HP	CEM	MLK	MW	MH	CW	MRB	RE	FAT	TND	CLW	ANGL	HS	PAP
63	73	16	23	94	57	3	10	10	54	74	70	55	10	3	3	51	29	26	47	10	91

A flushmate sister to the previous lot that rivals her in every form that is the Number 16 \$M Wizard daughter in the breed that stems from a dam that combines the two Pathfinder sires Identified and Sure Fire. Check out this female's super impressive combination of CED, WW, YW, \$EN, and carcass merit to go along with her elite maternal traits.

9 **B I G Grid Maker 2304 B545**
 Birth Date: 12-05-2025 · Cow +*21442429 · Tattoo: B545

#*GB Fireball 672
 +*G A R Grid Maker L1071
 20370359
 ANGUS360
 +*Genstart 6273 Captain 2304
 20823385

+*G A R Sure Fire 6404
 +*GB Anticipation 432
 +*G A R Sure Fire
 +*Chair Rock Progress 3005
 +*KB-Full Measure C40
 +*E W A 8113 of 531 Method
 +*HPCA Veracious
 +*44 Ruby 327F

\$M	+68
\$W	+96
\$B	+263
\$C	+409

CED	BW	WW	YW	SC	DOC	CLAW	ANGLE	PAP	HS												
+10	+1	+81	+140	+26	+24	+5.6	+5.1	+1.40	+26												
HP	MLK	TEAT	UDDR	FL	\$EN	CW	MARB	RE	FAT												
+12.6	+36	+12	+12	+1.03	-28	+92	+1.77	+91	+0.41												
CED	BW	WW	YW	DMI	YH	SC	DOC	HP	CEM	MLK	MW	MH	CW	MRB	RE	FAT	TND	CLW	ANGL	HS	PAP
39	40	25	32	74	32	49	17	18	5	12	45	21	3	2	27	88	37	73	57	14	65

A double digit calving ease female by the big-time performance sire at FB Genetics, GAR Grid Maker, that stems from a dam that combines EWA Captain and Veracious stemming back to the legendary \$500,000 Ruby 2537. Check out the elite marbling on this female along with the other 18 different traits in the top 25% of the breed. She sells with Recip A514.

BRED HEIFERS



LOT 12

12

BIG Ambitious of B102 H522

Birth Date: 02-08-2025 · Cow +*21190427 · Tattoo: H522

<p>*SEO Ultra Provider</p> <p>+*FF Rito Ambitious</p> <p>20437882 *RMRK Rita 0237</p> <p>ANGUS <small>Powered by MyAngus.com</small></p> <p>#*G A R Home Town</p> <p>+*BIG Home Town of T276 B102</p> <p>19947596 *Green Garden Lady T276</p>	<p>*G A R Momentum K836</p> <p>*Chair Rock Progress 3023</p> <p>*Thomas Edison 6764</p> <p>*RMRK Rita 8232</p> <p>#*G A R Ashland</p> <p>*Chair Rock Sure Fire 6095</p> <p>*Gardens Cache</p> <p>Green Garden Lady Q277</p>
--	---

\$M	+91
\$W	+79
\$B	+253
\$C	+419

A super attractive, big time performance female by the record setting FF Rito Ambitious and a direct daughter of the \$100,000 valued BIG Timber and Four Sons donor, BIG Home Town of T276 B102, who is a direct daughter of the legendary multimillion-dollar producer Green Garden Lady T276. Check out the elite combination of \$EN and YW on this super soft middled, long spined female. She sells bred on 4/5/26 to BIG Free Bird.

CED	BW	WW	YW	SC	DOC	CLAW	ANGLE	PAP	HS												
+7	+6	+78	+144	+0.09	+24	+51	+48	-.57	+15												
HP	MLK	TEAT	UDDR	FL	\$EN	CW	MARB	RE	FAT												
+11.8	+23	+63	+.57	+1.04	-4	+78	+1.94	+86	+0.29												
CED	BW	WW	YW	DMI	YH	SC	DOC	HP	CEM	MLK	MW	MH	CW	MRB	RE	FAT	TND	CLW	ANGL	HS	PAP
42	31	47	12	82	79	58	11	23	3	86	78	76	19	1	45	72	22	51	30	9	4



BRED HEIFERS



LOT 13A



**BYRD SuperMama FB
6276-2554 - \$46,000
Dam of Lots 13A & 13B**

13A **B I G SuperMama PAC B418**
 Birth Date: 08-12-2024 · Cow #*21013605 · Tattoo: B418

*SG Salvation
****4 Sons Pacifico**
 20215996 *Mill Brae I Karama 7237
ANGUS 66 #*GB Fireball 672
****BYRD SuperMama FB 6276-2554**
 20436151 *MCC SuperMama 6276

##*Baldridge Alternative E125
 **MGR JP Rita 7037
 ##*Mill Brae Identified 4031
 Mill Brae Stim Karama 3025
 **G A R Sure Fire 6404
 *GB Anticipation 432
 ##*Connealy Black Granite
 *MCC SuperMama 2320

\$M	+71
\$W	+78
\$B	+220
\$C	+356

13B **B I G SuperMama AMB H509**
 Birth Date: 01-08-2025 · Cow #*21167410 · Tattoo: H509

*SEO Ultra Provider
****FF Rito Ambitious**
 20437882 *RMRK Rita 0237
ANGUS 66 #*GB Fireball 672
****BYRD SuperMama FB 6276-2554**
 20436151 *MCC SuperMama 6276

*G A R Momentum K836
 *Chair Rock Progress 3023
 *Thomas Edison 6764
 **RMRK Rita 8232
 *G A R Sure Fire 6404
 *GB Anticipation 432
 ##*Connealy Black Granite
 *MCC SuperMama 2320

\$M	+84
\$W	+78
\$B	+255
\$C	+415

CED	BW	WW	YW	SC	DOC	CLAW	ANGLE	PAP	HS												
+6	+3.0	+83	+144	+2.07	+24	+43	+36	-1.04	+36												
HP	MLK	TEAT	UDDR	FL	\$EN	CW	MARB	RE	FAT												
+10.1	+27	+45	+50	+1.07	-31	+79	+1.29	+1.23	+0.11												
CED	BW	WW	YW	DMI	YH	SC	DOC	HP	CEM	MLK	MW	MH	CW	MRB	RE	FAT	TND	CLW	ANGL	HS	PAP
32	44	30	26	79	34	3	3	62	80	34	41	40	6	10	1	39	20	32	17	29	10

CED	BW	WW	YW	SC	DOC	CLAW	ANGLE	PAP	HS												
+11	+5	+78	+132	+41	+25	+79	+56	-1.44	+44												
HP	MLK	TEAT	UDDR	FL	\$EN	CW	MARB	RE	FAT												
+14.6	+23	+45	+51	+1.18	-16	+85	+1.63	+1.36	+0.19												
CED	BW	WW	YW	DMI	YH	SC	DOC	HP	CEM	MLK	MW	MH	CW	MRB	RE	FAT	TND	CLW	ANGL	HS	PAP
52	42	31	28	65	57	43	5	3	58	46	51	2	2	1	35	96	100	91	44	2	

A super attractive, super balanced Pacifico daughter that is a direct daughter of the \$46,000 Biltmore selection in the December 2024 sale, SuperMama 2554, who is a direct daughter of the multimillion-dollar producer at Byrd Cattle SuperMama 6276. You have to appreciate the elite combination of growth, foot scores, PAP and carcass merit on this good-looking female. She sells bred on 4/15/26 to BIG Free Bird.

A full sister to the \$130,000 selection of Grimmus Cattle in the May 2025 sale, who is by the record setting FF Rito Ambitious and a direct daughter of the \$46,000 selection of Biltmore in the December 2024 sale, who is a direct daughter of the legendary multimillion-dollar producer at Byrd Cattle, SuperMama 6276. Check out the combination of CED, PAP and carcass merit on this super attractive, massive middled female. She sells due to calve 11/25/26 to BIG Free Bird.



LOT 13B

BRED HEIFERS




LOT 14

14 Blackstone Gettysburg 4479 [AMF-CAP-03F-02F-MLF-NMF-QHF-OSF-RDF]
 Birth Date: 10-01-2024 · Cow #*21262051 · Tattoo: 4479

*WAR Cavalry B063 Z044 #*Connealy Cavalry 1149
 #*EZAR Gettysburg 1061 War CC&7 Z044 X029
 20028170 *Paf Rita 7096 #*Connealy Confidence Plus
 #*Quaker Hill Rampage 0A36 *Paf Rita 5091
 #*44 Ruby 6267 #*MCC Daybreak
 18498000 #*44 Ruby 2357 #*QHF Blackcap 6E2 of4V16 4355
 #*Connealy Capitalist 028
 #*44 Ruby X110

\$M	+64
\$W	+89
\$B	+223
\$C	+353

15 BIG Hustler of 598 H516
 Birth Date: 01-15-2025 · Cow #*21187486 · Tattoo: H516

*SEO Ultra Provider #*G A R Momentum K836
 #*FF Rito Hustler 1B69 #*Chair Rock Progress 3023
 20325042 *RMRK Rita 0237 #*Thomas Edison 6764
 #*G A R Sure Fire #*RMRK Rita 8232
 #*G A R Sure Fire #*Connealy In Sure 8524
 19266240 #*G A R Early Bird N955 #*Chair Rock 5050 G A R 8086
 #*G A R Early Bird
 #*G A R Prediction 762

\$M	+70
\$W	+67
\$B	+208
\$C	+340

CED	BW	WW	YW	SC	DOC	CLAW	ANGLE	PAP	HS
+7	+1.9	+96	+163	+74	+15	+57	+48	+1.99	+39
HP	MLK	TEAT	UDDR	FL	\$EN	CW	MARB	RE	FAT
+12.9	+20	+34	+42	+1.01	-34	+82	+1.34	+1.17	+040

CED	BW	WW	YW	SC	DOC	CLAW	ANGLE	PAP	HS
+9	+1.3	+67	+130	+26	+24	+39	+33	+36	+14
HP	MLK	TEAT	UDDR	FL	\$EN	CW	MARB	RE	FAT
+13.0	+31	+47	+47	+1.01	-26	+55	+1.86	+74	+0

Check out the massive growth curve in this super attractive Gettysburg daughter that stems from a dam that combines Rampage and the legendary \$500,000 Ruby 2357. This long spined, massive hipped female possesses 16 different traits in the top 20% of the breed. Not to mention her elite combination of growth and carcass merit all in one super attractive package. She sells due to calve 10/16/26 to BIG Free Bird.

Check out the elite foot scores on this female by the \$1 million valued FF Rito Hustler and a direct daughter of the long-time donor here at BIG Timber, GAR Sure Fire 598, who has proven her ability to produce elite cattle on the hoof and on paper. This long spined, deep sided female possesses a super balanced EPD profile with elite marbling. She sells bred on 4/18/26 to BIG Free Bird.



LOT 15

FALL BRED COWS



LOT 18

18 AH/B I G Clarity 0D13 4418

Birth Date: 01-03-2023 · Cow +*20579862 · Tattoo: 4418

#Cherry Creek Land Grant #K C F Bennett Homestead
 *Connealy Clarity Cherry Crk Eva B27 M
 19555171 *Breshie of Conanga 6988 #*Connealy Confidence Plus
 *FF Rita OD13 of 8M10 Radiant *EXAR Stallion 7986
 19831556 +*FF Rita 8M10 of 3R30 Magic #*Byergo Black Magic 3348
 +*FF Rita 8M10 of 3R30 Magic #*FF Rita 3R30 of 9Q23 5M2

\$M +71
 \$W +84
 \$B +250
 \$C +395

CED	BW	WW	YW	SC	DOC	CLAW	ANGLE	PAP	HS												
+14	-.9	+74	+138	+1.50	+23	+.40	+.50	+3.34	+.29												
HP	MLK	TEAT	UDDR	FL	\$EN	CW	MARB	RE	FAT												
+12.9	+34	+45	+32	+1.05	-29	+76	+1.77	+1.23	-.048												
CED	BW	WW	YW	DMI	YH	SC	DOC	HP	CEM	MLK	MW	MH	CW	MRB	RE	FAT	TND	CLW	ANGL	HS	PAP
2	2	69	37	39	76	12	18	31	53	13	60	63	29	1	10	15	44	14	63	13	90

A double digit calving ease Clarity daughter that is a direct daughter of the deceased Haws Angus donor FF Rita 0D13, who traces back to the legendary multimillion-dollar producing Friendship Farms donor FF Rita 3R30. Check out the impressive combination of marbling, ribeye and growth in this female. She sells due to calve 8/21/2026 to BIG Free Bird.

19 G A R Grass Roots 1962

Birth Date: 09-09-2022 · Cow +*20556645 · Tattoo: 1962

#*G A R Quantum #*G A R Momentum
 +*G A R Grass Roots #*G A R In Sure 1524
 19779575 +*Chair Rock Sure Fire 6095 #**G A R Sure Fire
 #*Mill Brae Identified 4031 #*Chair Rock Progress 3005
 #*Koupals B&B Identity
 +*G A R Identified N870 #*Mill Brae Pro Blackcap 1092
 20051778 +*G A R Sure Fire 808S #**G A R Sure Fire
 +*G A R Prophet 1845

\$M +71
 \$W +70
 \$B +229
 \$C +368

CED	BW	WW	YW	SC	DOC	CLAW	ANGLE	PAP	HS												
+8	+2.3	+79	+145	+1.35	+26	+.48	+.43	+.38	+.05												
HP	MLK	TEAT	UDDR	FL	\$EN	CW	MARB	RE	FAT												
+14.0	+24	+72	+.63	+.96	-28	+81	+1.30	+1.35	+.031												
CED	BW	WW	YW	DMI	YH	SC	DOC	HP	CEM	MLK	MW	MH	CW	MRB	RE	FAT	TND	CLW	ANGL	HS	PAP
88	94	35	10	83	59	28	24	28	90	64	37	18	6	8	2	54	66	31	19	6	47

A super attractive Grass Roots daughter that stems from a dam that combines the two Pathfinder sires Mill Brae Identified and GAR Sure Fire. Check out the elite combination of management traits and carcass merit on this female that also possesses an explosive growth curve. She sells due to calve on 8/21/2026 to BIG Free Bird.



LOT 19

Kelley



This is....



B I G



B I G Time Genetics producing B I G Results

GROUPS OF TWO HEIFERS



21A **B I G Heat Seeker 2657 B526**
 Birth Date: 09-17-2025 · Cow +*21354602 · Tattoo: B526

#*Mill Brae Identified 4031 #*Koupals B&B Identity
 #*Baldridge Heat Seeker H925 #*Mill Brae Pro Blackcap 1092
 19806485 +*Baldridge Isabel E048 #*Connealy Confidence Plus
 #*Baldridge Isabel Y69
 #*G A R Momentum #**G A R Progress
 #*G A R Momentum 2657 +*G A R Big Eye 1770
 18943177 +*G A R Early Bird N1065 *G A R Early Bird
 +*G A R Complete N281

\$M	+79
\$W	+80
\$B	+223
\$C	+368

CED	BW	WW	YW	SC	DOC	CLAW	ANGLE	PAP	HS												
+7	+1.2	+74	+127	+12	+28	+5.8	+60	+43	+38												
HP	MLK	TEAT	UDDR	FL	\$EN	CW	MARB	RE	FAT												
+13.5	+29	+71	+75	+1.06	-16	+75	+1.23	+1.17	+027												
CED	BW	WW	YW	DMI	YH	SC	DOC	HP	CEM	MLK	MW	MH	CW	MRB	RE	FAT	TND	CLW	ANGL	HS	PAP
75	71	52	54	42	46	92	17	11	90	46	69	50	29	5	13	72	99	82	88	19	24

Sells with Lot 21B

20A **B I G Bullseye of 598 B535**
 Birth Date: 10-17-2025 · Cow +*21382252 · Tattoo: B535

+*Beal Breakthrough +*G A R Prophet K263
 #*BYRD Bullseye 1186-A100 #*H P C A Sure Fire S6
 20620255 *Vintage Blackcap 1186 #*GB Fireball 672
 #*Vintage Blackcap 9186
 #*G A R Sure Fire #*Connealy In Sure 8524
 #*G A R Sure Fire 598 +*Chair Rock 5050 G A R 8086
 19266240 +*G A R Early Bird N955 *G A R Early Bird
 +*G A R Prediction 762

\$M	+38
\$W	+78
\$B	+248
\$C	+360

CED	BW	WW	YW	SC	DOC	CLAW	ANGLE	PAP	HS												
+11	+1.1	+90	+170	+78	+28	+4.3	+26	+84	+14												
HP	MLK	TEAT	UDDR	FL	\$EN	CW	MARB	RE	FAT												
+9.0	+24	+52	+55	+81	-54	+90	+1.41	+1.50	-024												
CED	BW	WW	YW	DMI	YH	SC	DOC	HP	CEM	MLK	MW	MH	CW	MRB	RE	FAT	TND	CLW	ANGL	HS	PAP
27	62	10	1	79	5	59	13	43	24	81	4	1	3	18	2	30	99	10	1	7	65

Sells with Lot 20B

21B **B I G Heat Seeker 2012 H537**
 Birth Date: 09-30-2025 · Cow +*21384666 · Tattoo: H537

#*Mill Brae Identified 4031 #*Koupals B&B Identity
 #*Baldridge Heat Seeker H925 #*Mill Brae Pro Blackcap 1092
 19806485 +*Baldridge Isabel E048 #*Connealy Confidence Plus
 #*Baldridge Isabel Y69
 #*G A R Home Town #**G A R Ashland
 #*G A R Home Town 2012 +*Chair Rock Sure Fire 6095
 20556649 +*G A R Phoenix *G A R Phoenix
 +*G A R Momentum 1976

\$M	+84
\$W	+70
\$B	+234
\$C	+387

CED	BW	WW	YW	SC	DOC	CLAW	ANGLE	PAP	HS												
+11	+8	+69	+117	+96	+19	+4.0	+41	-2.80	+49												
HP	MLK	TEAT	UDDR	FL	\$EN	CW	MARB	RE	FAT												
+12.0	+24	+76	+64	+1.03	-7	+71	+1.33	+1.33	-011												
CED	BW	WW	YW	DMI	YH	SC	DOC	HP	CEM	MLK	MW	MH	CW	MRB	RE	FAT	TND	CLW	ANGL	HS	PAP
28	70	69	68	13	47	46	60	17	67	68	68	56	22	6	5	19	62	15	29	66	2

Sells with Lot 21A

20B **B I G Bullseye of 598 B531**
 Birth Date: 09-26-2025 · Cow +*21362846 · Tattoo: B531

+*Beal Breakthrough +*G A R Prophet K263
 #*BYRD Bullseye 1186-A100 #*H P C A Sure Fire S6
 20620255 *Vintage Blackcap 1186 #*GB Fireball 672
 #*Vintage Blackcap 9186
 #*G A R Sure Fire #*Connealy In Sure 8524
 #*G A R Sure Fire 598 +*Chair Rock 5050 G A R 8086
 19266240 +*G A R Early Bird N955 *G A R Early Bird
 +*G A R Prediction 762

\$M	+59
\$W	+86
\$B	+221
\$C	+346

CED	BW	WW	YW	SC	DOC	CLAW	ANGLE	PAP	HS												
+12	-.2	+76	+138	+73	+29	+5.1	+28	+1.11	+28												
HP	MLK	TEAT	UDDR	FL	\$EN	CW	MARB	RE	FAT												
+9.0	+34	+50	+41	+88	-29	+66	+1.63	+1.10	-012												
CED	BW	WW	YW	DMI	YH	SC	DOC	HP	CEM	MLK	MW	MH	CW	MRB	RE	FAT	TND	CLW	ANGL	HS	PAP
7	12	66	49	32	62	56	3	67	26	26	77	55	63	7	25	42	98	43	1	23	57

Sells with Lot 20A



GROUPS OF TWO HEIFERS



B I G Opus of 2657 B118 - Dam of Lot 22A

23A B I G Majority of 2012 H524

Birth Date: 08-02-2025 · Cow +*21328260 · Tattoo: H524

*Connealy Clarity #Cherry Creek Land Grant
 #*FHCC Majority 1551 *Breshie of Conanga 6988
 20119568 +*Woodland Blackcap Lady 84 #**G A R Sure Fire
ANGUS #*G A R Home Town #Basin Blackcap Lady 0172
 #**G A R Ashland
 #*G A R Home Town 2012 #*Chair Rock Sure Fire 6095
 20556649 +*G A R Phoenix 419 +*G A R Phoenix
 +*G A R Momentum 1976

CED	BW	WW	YW	SC	DOC	CLAW	ANGLE	PAP	HS												
+16	-1.0	+80	+139	+37	+25	+56	+43	+1.84	+16												
HP	MLK	TEAT	UDDR	FL	\$EN	CW	MARB	RE	FAT												
+10.6	+30	+76	+71	+1.01	-21	+75	+1.31	+1.26	-.021												
CED	BW	WW	YW	DMI	YH	SC	DOC	HP	CEM	MLK	MW	MH	CW	MRB	RE	FAT	TND	CLW	ANGL	HS	PAP
2	13	63	42	22	44	51	12	61	100	53	68	67	40	3	14	21	76	56	30	16	62

Sells with 23B

22A B I G Powercat of B118 H523

Birth Date: 07-31-2025 · Cow +*21328259 · Tattoo: H523

*E & B Wildcat 9402 #**GAR Discovery 6737H
 #*G A R Powercat E&B Lady Plus 643
 20665222 *Daltons Rita 0206 #*GB Fireball 672
ANGUS #*Daltons Rita 8225
 #*Gardens Opus *Gardens Cache
 #*B I G Opus of 2657 B118 #Green Garden Emma P120
 19989107 *G A R Momentum #*G A R Momentum
 +*G A R Momentum 2657 +*G A R Early Bird N1065

CED	BW	WW	YW	SC	DOC	CLAW	ANGLE	PAP	HS												
+15	-.5	+78	+152	+86	+25	+59	+52	+1.11	+28												
HP	MLK	TEAT	UDDR	FL	\$EN	CW	MARB	RE	FAT												
+13.3	+26	+60	+60	+97	-28	+82	+1.71	+1.00	+.027												
CED	BW	WW	YW	DMI	YH	SC	DOC	HP	CEM	MLK	MW	MH	CW	MRB	RE	FAT	TND	CLW	ANGL	HS	PAP
8	26	52	5	69	84	59	35	22	69	44	53	74	4	1	8	81	95	84	69	14	28

Sells with Lot 22B



LOT 23B



LOT 22B

23B B I G Breakaway of T231 H527

Birth Date: 08-12-2025 · Cow +*21328956 · Tattoo: H527

*Beal Breakthrough #*G A R Prophet K263
 #*4 Sons Breakaway #*H P C A Sure Fire S6
 20569806 *Mill Brae I Karama 7237 #**Mill Brae Identified 4031
ANGUS Mill Brae Stim Karama 3025
 #**Baldridge Alternative E125 Poss Easy Impact 0119
 #*FF Rita 2T31 5B63 Alt Baldridge Blackbird A030
 20418093 +*FF Rita 5B63 of 356H 3S10 +*Rito 3S10 of 9Q15 Progress
 +*/R Queen of New Design 356H

CED	BW	WW	YW	SC	DOC	CLAW	ANGLE	PAP	HS												
+6	+1.2	+93	+166	+72	+23	+63	+52	+2.62	+07												
HP	MLK	TEAT	UDDR	FL	\$EN	CW	MARB	RE	FAT												
+8.4	+26	+59	+61	+1.09	-48	+101	+1.11	+1.59	+007												
CED	BW	WW	YW	DMI	YH	SC	DOC	HP	CEM	MLK	MW	MH	CW	MRB	RE	FAT	TND	CLW	ANGL	HS	PAP
32	17	10	4	76	30	72	44	50	21	70	17	22	2	17	1	50	96	78	76	3	71

Sells with 23A

22B B I G Majority of 2012 H529

Birth Date: 08-23-2025 · Cow +*21339859 · Tattoo: H529

*Connealy Clarity #Cherry Creek Land Grant
 #*FHCC Majority 1551 #Breshie of Conanga 6988
 20119568 +*Woodland Blackcap Lady 84 #**G A R Sure Fire
ANGUS #Basin Blackcap Lady 0172
 #*G A R Home Town #**G A R Ashland
 #*G A R Home Town 2012 #*Chair Rock Sure Fire 6095
 20556649 +*G A R Phoenix 419 +*G A R Phoenix
 +*G A R Momentum 1976

CED	BW	WW	YW	SC	DOC	CLAW	ANGLE	PAP	HS												
+8	+1.5	+87	+150	+87	+21	+61	+46	+2.04	+24												
HP	MLK	TEAT	UDDR	FL	\$EN	CW	MARB	RE	FAT												
+13.1	+27	+59	+51	+97	-31	+82	+1.23	+1.42	-.019												
CED	BW	WW	YW	DMI	YH	SC	DOC	HP	CEM	MLK	MW	MH	CW	MRB	RE	FAT	TND	CLW	ANGL	HS	PAP
28	55	21	13	39	69	47	21	10	88	56	22	39	8	15	6	27	87	82	49	18	67

Sells with Lot 22A



B 2 7 2 E M B R Y O S



B I G Clarity of T276 B272 - Dam of Lot 24 Embryos

24A

Grand Slam X B272

3 IVF Heifer Embryos

+*G A R Home Run
***G A R Grand Slam**
 21179283 +*G A R Sunbeam 332

#*G A R Home Town
 +*Williams F Blackbird 705-429
 +*G A R Sunbeam
 +*G A R Identified N910
 #Cherry Creek Land Grant
 *Breshie of Conanga 6988
 *Gardens Cache
 Green Garden Lady Q277

\$M +103
 \$W +99
 \$B +269
 \$C +451

*Connealy Clarity
+*B I G Clarity of T276 B272
 20525871 *Green Garden Lady T276

Parent Averages										
CED	BW	WW	YW	SC	DOC	CLAW	ANGLE	PAP	HS	
+16	-1.9	+86	+152	+9.6	+25	+5.3	+5.5	+1.74	+1.6	
HP	MLK	TEAT	UDDR	FL	\$EN	CW	MARB	RE	FAT	
+16.1	+30	+4.6	+4.6	+1.15	-18	+81	+2.09	+1.11	+0.32	

Offering 3 IVF heifer embryos by the \$800,000 GAR Grand Slam and the Lot 1 female in this event that has already produced the \$100,000 valued selection of Three Trees in last year's sale, the \$17,000 selection of Tineo Cattle in the same event, and a \$37,000 flush to Byrd Cattle, and a \$40,000 pregnancy selected by Boston Valley. There is BIG Time potential here. A guarantee of 1 pregnancy if work is performed by an approved technician.

24C

Draft Pick X B272

3 IVF Heifer Embryos

*Connealy Clarity
+*PEAK Draft Pick
 20513315 +*Vintage Rita 0404

#Cherry Creek Land Grant
 *Breshie of Conanga 6988
 #*GB Fireball 672
 +*44 Rita 6291
 #Cherry Creek Land Grant
 *Breshie of Conanga 6988
 *Gardens Cache
 Green Garden Lady Q277

\$M +93
 \$W +95
 \$B +264
 \$C +435

*Connealy Clarity
+*B I G Clarity of T276 B272
 20525871 *Green Garden Lady T276

Parent Averages										
CED	BW	WW	YW	SC	DOC	CLAW	ANGLE	PAP	HS	
+10	+2	+85	+152	+1.23	+25	+4.3	+4.5	+1.7	+1.2	
HP	MLK	TEAT	UDDR	FL	\$EN	CW	MARB	RE	FAT	
+13	+31	+4	+4.1	+1.11	-22	+84	+1.91	+1.08	+0.25	

Offering 3 IVF heifer embryos by the GENEX sire Peak Draft Pick and the Lot 1 female in this event that has already produced the \$100,000 valued selection of Three Trees in last year's sale, the \$17,000 selection of Tineo Cattle in the same event, and a \$37,000 flush to Byrd Cattle, and a \$40,000 pregnancy selected by Boston Valley. Talk about something special, this genetic combination is lights out. A guarantee of 1 pregnancy if work is performed by an approved technician.

24B

Crick X B272

3 IVF Heifer Embryos

+*Ingram Heisman 0566
+*Wilks Crick 3708
 20753043 +*DBA Rita 1034

#*Connealy Confidence Plus
 +*RB Lady Denver 167-453
 #*G A R Home Town
 +*Pine View Rita E093
 #Cherry Creek Land Grant
 *Breshie of Conanga 6988
 *Gardens Cache
 Green Garden Lady Q277

\$M +102
 \$W +100
 \$B +257
 \$C +435

*Connealy Clarity
+*B I G Clarity of T276 B272
 20525871 *Green Garden Lady T276

Parent Averages										
CED	BW	WW	YW	SC	DOC	CLAW	ANGLE	PAP	HS	
+9	+1	+88	+154	+9.8	+21	+3.9	+4.4	+2.07	+1.22	
HP	MLK	TEAT	UDDR	FL	\$EN	CW	MARB	RE	FAT	
+13.4	+33	+5.8	+5.6	+1.13	-21	+90	+1.69	+1.25	+0.28	

Offering 3 IVF heifer embryos by the super rare and very limited Wilks Crick and the Lot 1 female in this event that has already produced the \$100,000 valued selection of Three Trees in last year's sale, the \$17,000 selection of Tineo Cattle in the same event, and a \$37,000 flush to Byrd Cattle, and a \$40,000 pregnancy selected by Boston Valley. The early reports have been outstanding on Crick calves, and these will be no exception. A guarantee of 1 pregnancy if work is performed by an approved technician.

24D

Lincoln X B272

3 IVF Embryos

+*EZAR Gettysburg 1061
+*DBA Lincoln 3012
 20899320 +*DBA Rita 1034

*WAR Cavalry B063 Z044
 *Paf Rita 7096
 #*G A R Home Town
 +*Pine View Rita E093
 #Cherry Creek Land Grant
 *Breshie of Conanga 6988
 *Gardens Cache
 Green Garden Lady Q277

\$M +76
 \$W +97
 \$B +270
 \$C +426

*Connealy Clarity
+*B I G Clarity of T276 B272
 20525871 *Green Garden Lady T276

Parent Averages										
CED	BW	WW	YW	SC	DOC	CLAW	ANGLE	PAP	HS	
+12	-2	+90	+163	+1.1	+20	+4.8	+4.5	+1.41	+1.17	
HP	MLK	TEAT	UDDR	FL	\$EN	CW	MARB	RE	FAT	
+10.3	+30	+4.4	+4.3	+1.06	-29	+90	+1.83	+1.22	+0.28	

Offering 3 IVF heifer embryos by the \$240,000 Four Sons and Double Angus herd sire Lincoln whose semen has been very limited to the public and the Lot 1 female in this event that has already produced the \$100,000 valued selection of Three Trees in last year's sale, the \$17,000 selection of Tineo Cattle in the same event, and a \$37,000 flush to Byrd Cattle, and a \$40,000 pregnancy selected by Boston Valley. A guarantee of 1 pregnancy if work is performed by an approved technician.

R 9 1 E M B R Y O S



G A R Identified R91 - Dam of Lot 25 Embryos

25A

Draft Pick X R91

3 IVF Heifer Embryos

*Connealy Clarity
+*PEAK Draft Pick
 20513315 +*Vintage Rita 0404

#*Mill Brae Identified 4031
+*G A R Identified R91
 20380291 +*G A R Sure Fire 427

#Cherry Creek Land Grant
 *Breshie of Conanga 6988
 #*GB Fireball 672
 +*44 Rita 6291
 #*Koupals B&B Identity
 *Mill Brae Pro Blackcap 1092
 #**G A R Sure Fire
 +*Chair Rock Prophet 3054

\$M +79
 \$W +91
 \$B +260
 \$C +416

Parent Averages										
CED	BW	WW	YW	SC	DOC	CLAW	ANGLE	PAP	HS	
+8	+1	+83	+149	+1.52	+21	+4.6	+4.2	+1.73	+1.17	
HP	MLK	TEAT	UDDR	FL	\$EN	CW	MARB	RE	FAT	
+11.3	+30	+43	+45	+1.02	-21	+86	+1.8	+99	+039	

Offering 3 IVF heifer embryos by PEAK Draft Pick and the deceased dam GAR Identified R91, who produced the \$220,000 valued BIG Maga and the \$47,000 selection of Grimmus Cattle in the May 2025 sale, BIG Home Run of R91 B440. Talk about a possible genetic explosion. These have a major genetic upside to them. A guarantee of 1 pregnancy if work is performed by an approved technician.

25C

Grand Slam X R91

3 IVF Heifer Embryos

*G A R Home Run
G A R Grand Slam [ANF-CAF-DZF-DOF-MEF-NHF-OHF-OSF-RDF]
 21179283 +*G A R Sunbeam 332

#*Mill Brae Identified 4031
G A R Identified R91
 20380291 +*G A R Sure Fire 427

#*G A R Home Town
 +*Williams F Blackbird 705-429
 +*G A R Sunbeam
 +*G A R Identified N910
 #*Koupals B&B Identity
 *Mill Brae Pro Blackcap 1092
 #**G A R Sure Fire
 +*Chair Rock Prophet 3054

\$M +89
 \$W +94
 \$B +265
 \$C +432

Parent Averages										
CED	BW	WW	YW	SC	DOC	CLAW	ANGLE	PAP	HS	
+13	-1.1	+84	+149	+1.25	+22	+5.6	+5.2	+1.78	+1.21	
HP	MLK	TEAT	UDDR	FL	\$EN	CW	MARB	RE	FAT	
+14.4	+29	+49	+51	+1.06	-17	+83	+1.98	+1.02	+047	

Offering 3 IVF heifer embryos by the record setting \$800,000 GAR Grand Slam and the deceased dam GAR Identified R91 who produced the \$220,000 valued BIG Maga and the \$47,000 selection of Grimmus Cattle in the May 2025 sale, BIG Home Run of R91 B440. Look out leader board, these have as much potential as any offered this spring to be one of the top females in the breed. A guarantee of 1 pregnancy if work is performed by an approved technician.

25B

Crick X R91

3 IVF Heifer Embryos

*Ingram Heisman 0566
+*Wilks Crick 3708
 20753043 +*DBA Rita 1034

#*Mill Brae Identified 4031
+*G A R Identified R91
 20380291 +*G A R Sure Fire 427

#*Connealy Confidence Plus
 +*RB Lady Denver 167-453
 #*G A R Home Town
 +*Pine View Rita E093
 #*Koupals B&B Identity
 *Mill Brae Pro Blackcap 1092
 #**G A R Sure Fire
 +*Chair Rock Prophet 3054

\$M +88
 \$W +95
 \$B +253
 \$C +416

Parent Averages										
CED	BW	WW	YW	SC	DOC	CLAW	ANGLE	PAP	HS	
+7	+1.8	+86	+151	+1.27	+18	+4.2	+4	+2.11	+1.27	
HP	MLK	TEAT	UDDR	FL	\$EN	CW	MARB	RE	FAT	
+11.7	+32	+61	+61	+1.04	-20	+92	+1.59	+1.16	+042	

Offering 3 IVF heifer embryos by the super rare and very limited Wilks Crick and the deceased dam GAR Identified R91 who produced the \$220,000 valued BIG Maga and the \$47,000 selection of Grimmus Cattle in the May 2025 sale, BIG Home Run of R91 B440. Don't miss out on this opportunity. These are going to be epic. A guarantee of 1 pregnancy if work is performed by an approved technician.

25D

First Avenue X R91

3 IVF Heifer Embryos

*G A R Home Town
PEAK First Avenue [ANF-CAF-DZF-DOF-MEF-NHF-OHF-OSF-RDF]
 20381985 +*Vintage Rita 0404

#*Mill Brae Identified 4031
G A R Identified R91
 20380291 +*G A R Sure Fire 427

#**G A R Ashland
 +*Chair Rock Sure Fire 6095
 #*GB Fireball 672
 +*44 Rita 6291
 #*Koupals B&B Identity
 *Mill Brae Pro Blackcap 1092
 #**G A R Sure Fire
 +*Chair Rock Prophet 3054

\$M +85
 \$W +91
 \$B +250
 \$C +409

Parent Averages										
CED	BW	WW	YW	SC	DOC	CLAW	ANGLE	PAP	HS	
+5	+1.8	+81	+141	+1.4	+18	+4.7	+4.1	-0.7	+1.15	
HP	MLK	TEAT	UDDR	FL	\$EN	CW	MARB	RE	FAT	
+12.6	+32	+45	+45	+1.02	-15	+83	+1.67	+1.25	+026	

Offering 3 IVF heifer embryos by the GENEX sire PEAK First Avenue and the deceased dam GAR Identified R91 who produced the \$220,000 valued BIG Maga and the \$47,000 selection of Grimmus Cattle in the May 2025 sale, BIG Home Run of R91 B440. This mating has untapped potential here, folks. A guarantee of 1 pregnancy if work is performed by an approved technician.

T 2 7 6 E M B R Y O S



Green Garden Lady T276 - Dam of Lot 26 Embryos

26A

Lincoln X T276

4 Conventional Embryos

+*EZAR Gettysburg 1061	*WAR Cavalry B063 Z044		
+*DBA Lincoln 3012	*Paf Rita 7096		
20899320	+*DBA Rita 1034	\$M	+65
	*Gardens Cache	\$W	+86
*Green Garden Lady T276	#*G A R Home Town	\$B	+265
19123914	+*Pine View Rita E093	\$C	+408
	#*A A R Ten X 7008 S A		
	Green Garden Rita K078		
	*Gardens Prime		
	Green Garden Lady Q277		
	Green Garden Lady N275		
Parent Averages			
CED	BW	WW	YW
+8	+5	+83	+153
SC	DOC	CLAW	ANGLE
+1.05	+21	+5.7	+5.2
PAP	HS		
+29	+31		
HP	MLK	TEAT	UDDR
+10.7	+28	+41	+39
FL	\$EN	CW	MARB
+99	-22	+88	+1.8
RE	FAT		
+1.09	+0.32		

Offering 4 conventional embryos by the \$240,000 Four Sons and Double Barrel herd sire Lincoln and the legendary multimillion-dollar producer Green Garden Lady T276. The donor dam of these embryos has stood the test of time and continues to outproduce herself in every form. A guarantee of 2 pregnancies if work is performed by an approved technician.

26B

Crick X T276

3 IVF Heifer Embryos

+*Ingram Heisman 0566	#*Connealy Confidence Plus		
+*Wilks Crick 3708	+*RB Lady Denver 167-453		
20753043	+*DBA Rita 1034	\$M	+91
	*Gardens Cache	\$W	+89
*Green Garden Lady T276	#*G A R Home Town	\$B	+252
19123914	+*Pine View Rita E093	\$C	+417
	#*A A R Ten X 7008 S A		
	Green Garden Rita K078		
	*Gardens Prime		
	Green Garden Lady Q277		
	Green Garden Lady N275		
Parent Averages			
CED	BW	WW	YW
+5	+1.7	+81	+144
SC	DOC	CLAW	ANGLE
+94	+23	+49	+51
PAP	HS		
+96	+36		
HP	MLK	TEAT	UDDR
+13.8	+31	+54	+52
FL	\$EN	CW	MARB
+107	-14	+88	+1.67
RE	FAT		
+1.12	+0.32		

Offering 3 IVF heifer embryos by the super rare and very limited Wilks Crick and the legendary multimillion-dollar producer Green Garden Lady T276. The donor dam of these embryos has stood the test of time, and this mating is just flat awesome. Check out the pedigree stack on these embryos, Rita 1034, Lady 453 and Lady T276. A guarantee of 1 pregnancy if work is performed by an approved technician.



598 EMBRYOS



G A R Sure Fire 598 - Dam of Lot 27 Embryos

27A

Grand Slam X 598

3 IVF Heifer Embryos

+*G A R Home Run	#*G A R Home Town		
*G A R Grand Slam	+*Williams F Blackbird 705-429		
21179283	+*G A R Sunbeam	\$M	+83
	+*G A R Identified N910	\$W	+85
	#*Connealy In Sure 8524	\$B	+251
#+*G A R Sure Fire	+Chair Rock 5050 G A R 8086	\$C	+408
+*G A R Sure Fire 598	*G A R Early Bird		
19266240	+*G A R Prediction 762		
	+*G A R Early Bird N955		

Parent Averages										
CED	BW	WW	YW	SC	DOC	CLAW	ANGLE	PAP	HS	
+15	-1.2	+77	+139	+93	+31	+61	+48	+1.42	+26	
HP	MLK	TEAT	UDDR	FL	\$EN	CW	MARB	RE	FAT	
+13.7	+28	+4.45	+4.48	+97	-13	+72	+1.97	+1	+0.36	

Offering 3 IVF heifer embryos by the record setting \$800,000 GAR Grand Slam and the long-time donor here at BIG Timber that has continually outproduced herself and is still producing elite genomics in super attractive packages. This has the opportunity to be BIG time good here, folks. A guarantee of 1 pregnancy if work is performed by an approved technician.

27B

Diligent X 598

3 IVF Heifer Embryos

+*PEAK Stapleton	*SG Salvation		
+*G A R Diligent	+*G A R Ashland 3159		
21183239	+*G A R Sunbeam	\$M	+82
	+*G A R Identified N910	\$W	+79
	#*Connealy In Sure 8524	\$B	+235
#+*G A R Sure Fire	+Chair Rock 5050 G A R 8086	\$C	+387
+*G A R Sure Fire 598	*G A R Early Bird		
19266240	+*G A R Prediction 762		
	+*G A R Early Bird N955		

Parent Averages										
CED	BW	WW	YW	SC	DOC	CLAW	ANGLE	PAP	HS	
+13	-1	+70	+127	+55	+31	+5	+45	+66	+39	
HP	MLK	TEAT	UDDR	FL	\$EN	CW	MARB	RE	FAT	
+10.6	+29	+5.3	+4.48	+98	-4	+69	+1.63	+1.2	+0.34	

Offering 3 IVF heifer embryos by the good looking and super balanced \$300,000 GAR Diligent and the long-time donor here at BIG Timber that has always outproduced herself and continually produces elite genomics in super attractive packages. These will be worth the money here, folks. Calve these and you will have yourself a donor. A guarantee of 1 pregnancy if work is performed by an approved technician.



SEMEN



B I G Free Bird - Semen

28A **B I G Free Bird** [AMF-CAF-QDF-DOF-MUF-NHF-OHF-OSF-RDF]
 Birth Date: 08-29-2024 · Semen +*21028194 · Tattoo: Z427

#*GB Fireball 672	+*G A R Sure Fire 6404	\$M	+77
+*G A R Grid Maker L1071	*GB Anticipation 432	\$W	+88
20370359 +*Chair Rock Sure Fire 6095	##*G A R Sure Fire	\$B	+284
ANGUS <small>365</small>	+*Chair Rock Progress 3005	\$C	+445
#*G A R Home Town	##*G A R Ashland		
+*G A R Home Town F681	+*Chair Rock Sure Fire 6095		
20251351 +*G A R Momentum F266	#*G A R Momentum		
	+*G A R Daybreak 342		

CED	BW	WW	YW	SC	DOC	CLAW	ANGLE	PAP	HS
+13	+2	+79	+133	+1.39	+27	+75	+51	-.95	-.11

HP	MLK	TEAT	UDDR	FL	\$EN	CW	MARB	RE	FAT
+14.6	+29	+57	+59	+1.04	-22	+75	+2.51	+1.04	-.017

CED	BW	WW	YW	DMI	YH	SC	DOC	HP	CEM	MLK	MW	MH	CW	MRB	RE	FAT	TND	CLW	ANGL	HS	PAP
23	44	48	66	19	56	7	30	5	54	51	64	49	13	1	9	17	70	100	57	1	12

5 Units

28B **B I G Free Bird** [AMF-CAF-QDF-DOF-MUF-NHF-OHF-OSF-RDF]
 Birth Date: 08-29-2024 · Semen +*21028194 · Tattoo: Z427

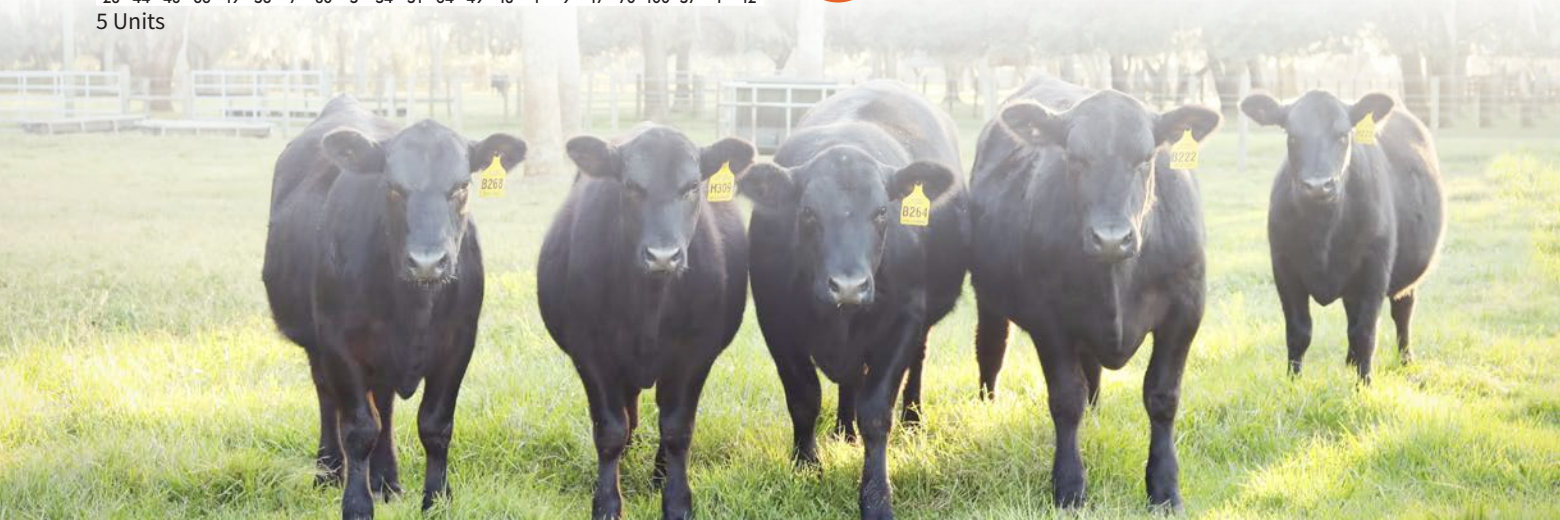
5 Units

28C **B I G Free Bird** [AMF-CAF-QDF-DOF-MUF-NHF-OHF-OSF-RDF]
 Birth Date: 08-29-2024 · Semen +*21028194 · Tattoo: Z427

5 Units

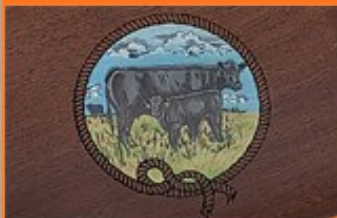
28D **B I G Free Bird** [AMF-CAF-QDF-DOF-MUF-NHF-OHF-OSF-RDF]
 Birth Date: 08-29-2024 · Semen +*21028194 · Tattoo: Z427

5 Units





*Win a Custom
American Cattleman
Tribute Edition Rifle*



THIS IS BIG

We will be drawing for a chance to win a custom Henry American Cattleman Tribute Edition Rifle. The top 10 high selling lots will go into a hat at the conclusion of the sale. We will then draw a lot number and the buyer of that lot will be given this truly limited edition rifle. The rifle has a beautiful designed angus cow/calf scene perfect for the Angus breeder to cherish.



Parker Friedrich Marketing and Consulting
566 Hillcrest Dr.
Stephenville, TX 76401
(254) 413-2420 mob (254) 968-8162 fax/home
parkerfriedrich@earthlink.net

PRSR
FIRST-CLASS
U.S. POSTAGE
PAID
St. Joseph, MO
Permit #2017



LITHIA, FLORIDA
(813) 927-9090

It's BIG Time

LIVE
ONLINE AT



6:00 P.M. EDT
THURSDAY
MAY 21, 2026