



BEAR HILL CATTLE COMPANY

Production Sale
MAY 23, 2026
6PM SALE TIME





WWW.BEARHILLCATTLE.COM

Production Sale MAY 23, 2026

6PM SALE TIME

*Bear Hill Cattle Company
17122 Bellamy Brothers Blvd.
Dade City, FL 33523*



Terry and Michele Edmonson
813.714.9712



Natalia Edmonson 813.309.1303
Nina Maddox 813.309.1877

Dear Friends and Cattlemen,

Welcome to Bear Hill Cattle Company's Inaugural Sale. We are a family owned and operated seedstock producer and have been building our herd over the past 5 years in preparation of our first sale day. We feel very passionate about breeding quality cattle that will bring improvements to your herd goals, whether that is heavier weaning weights, higher calving ease, EPD values or phenotype, along with increased dollar values at market.

Our family has selected our very best cattle while staying true to what the Angus breed is known for, carcass merit.

Please join us on Saturday, May 23rd at 6:00p.m., either online or in person. The sale cattle will be available to view on Friday, May 22nd from 12:00 p.m. to 4:00 p.m., and sale day from 12:00 p.m. to 4:00 p.m. Dinner will be served following the sale.

Our family is thankful for the support we have received from our many friends throughout the cattle industry. Please feel free to call Terry at (813) 714-9712 with any questions.

We look forward to seeing you in May.

Sincerely,
The Edmonson Family





Bear Hill Cattle Company

Terry Edmonson Owner - 813.714.9712

Natalia Edmonson - 813.309.1303

Nina Maddox - 813.309.1877



Sale Managed By

Zach Moffitt

336.736.6340

zmoffittcattlemarketing.com

Auctioneer

Dustin Layton 405.464.2455

Sale Location

17122 Bellamy Brothers Blvd.

Dade City, FL 33523

Accommodations

Hampton Inn - Dade City, FL

13215 US- 301 Dade City, FL 33525

352.567.5277

Saddlebrook Resort

5700 Saddlebrook Way

Wesley Chapel, FL 33543

813.973.1111

Local Airport

Tampa International Airport

Herd Health

Cattle will be accompanied with proper health certificates for immediate shipment. An updated breeding and calving report will be available sale day and announcements from the auction block will take precedence over all printed material.

Terms and Conditions

The cattle will sell under the suggested terms and conditions of the American Angus Association (web link). All announcements from the sale block will take precedence over the printed materials.

Sale Settlement

All cattle are to be settled for prior to shipping out unless prior arrangement has been made with Bear Hill Cattle Company before the sale. Terms are cash or check.

Video and Updates will be available on CCI.Live



Bid Live Online

www.CCI.live - Watch the Sale

(405) 400-9505 Text/Call - schedule@cci.live

Find us on the App Store and Google Play

Over 35 years in livestock marketing!

GREEN GARDEN LADY T276 *Pregnancy*





Wilks Crick

7 CRICK X T276
 Due Date: 09-14-2026

Sire ***Wilks Crick 3708** **Heifer Pregnancy**
 20753043 **+DBA Rita 1034**
 *Ingram Heisman 0566
 #*Connealy Confidence Plus
 #*RB Lady Denver 167-453
 #*G A R Home Town
 #*Pine View Rita E093
 #*A A R Ten X 7008 S A
 Green Garden Rita K078
 *Gardens Cache
 *Gardens Prime
 Green Garden Lady N275

| Sire | Doc | Claw | Angle | HS | CWT | MARB | RIB |
|------|------|------|-------|----|-----|------|-----|
| SM | +100 | +82 | | | | | |
| SW | +105 | +72 | | | | | |
| SB | +274 | +229 | | | | | |
| SC | +455 | +379 | | | | | |

Dam ***Green Garden Lady T276**
 19123914 Green Garden Lady Q277

| Sire | CED | BW | WW | YW | SC | HP | MILK | DOC | CLAW | ANGLE | HS | CWT | MARB | RIB |
|------|------|-----|------|-----|-------|-----|------|-----|------|-------|------|-------|-------|-----|
| +6 | +2.9 | +95 | +162 | +90 | +11.7 | +33 | +19 | +40 | +39 | +38 | +107 | +1.64 | +1.57 | |

| Dam | CED | BW | WW | YW | SC | HP | MILK | DOC | CLAW | ANGLE | HS | CWT | MARB | RIB |
|-----|-----|-----|------|-----|-------|-----|------|-----|------|-------|-----|-------|------|-----|
| +4 | +4 | +67 | +125 | +97 | +15.8 | +29 | +26 | +57 | +63 | +34 | +68 | +1.69 | +67 | |

Heifer Pregnancy Due 9.14.26 in a commercial recip.
 What an incredible mating here! A heifer pregnancy by the very popular Wilks Crick and Green Garden Lady T276 who is over a \$3 Million Dollar Producer! This mating has all the forward momentum for Pedigree, Phenotype and Numeric Value it could possibly have. They complement each other very well for Production, Maternal, Management and Carcass Traits. This heifer calf will have the credentials to move your program value forward easily. T276 was purchased back by BIG Timber and 4 Sons Farms during the Springfield Dispersal in 2025. You can count on seeing more progeny out of this great donor and this is your chance to get in early on one of the most sought-after sires in the Angus breed. Wilks Crick checks all the boxes for Production, Maternal, Management and Carcass Values. Crick is out of the Multi-Million Dollar Producing DBA Rita 1034. The pedigree value in this mating is second to none and the EPDs will be explosive.

BEAR HOME RUN OF B272 E523



Adam Moss



BIG Clarity of T276 B272

2 BEAR HOME RUN OF B272 E523

Birth Date: 08-20-2025 Cow #*21330016 Tattoo: E523

Sire #*G A R Home Town #*G A R Ashland
 20508438 #*Williams F Blackbird 705-429 #*Chair Rock Sure Fire 6095
 #*GB Fireball 672
 #*Williams Blackcap L 455-306
Dam *Connealy Clarity #Cherry Creek Land Grant
 #*Breshie of Conanga 6988
 20525871 *Green Garden Lady T276 *Gardens Cache
 Green Garden Lady Q277

| |
|------|
| SM |
| +103 |
| SW |
| +97 |
| SB |
| +262 |
| SC |
| +443 |

| CED | BW | WW | YW | SC | HP | MILK | DOC | CLAW | ANGLE | HS | CWT | MARB | RIB |
|-----|----|-----|------|-------|-------|------|-----|------|-------|-----|-----|-------|-----|
| +11 | +3 | +89 | +161 | +1.14 | +15.3 | +32 | +24 | +46 | +46 | +38 | +91 | +1.78 | +82 |

| ANGUS | CED | BW | WW | YW | DMI | YH | SC | DOC | HP | CEM | MLK | MW | MH | CW | MRB | RE | FAT | TND | PAP | CLW | ANGL | HS |
|-------|-----|----|----|----|-----|----|----|-----|----|-----|-----|----|----|----|-----|----|-----|-----|-----|-----|------|----|
| 8 | 27 | 36 | 10 | 79 | 47 | 36 | 39 | 4 | 3 | 32 | 55 | 55 | 10 | 3 | 44 | 50 | 73 | 31 | 38 | 58 | 23 | |

Open Heifer

This standout from the Bear Hill program will have a ton of earning potential. She has the pedigree and the numerics to push to the next level. She is backed by the great Green Garden Lady T276 out of a Clarity daughter from the BIG Timber program that is producing highly sought-after calves. She offers great Calving Ease to Growth spread, 27 EPDs and Indexes in the top 35% of the breed or better with excellent predictions for Growth, Fertility, Teat, Uddr, FL, a clean set of Management Traits and premium Carcass Values. She had a full sister, BIG Home Run of B272 B510, who was the \$50,000 1/2 interest selection of Three Trees Land and Cattle in the December 2025 BIG Timber Online Sale. In that same event, a heifer pregnancy by B272 and Grand Slam was the \$40,000 selection of Boston Valley Farm in Hamburg, NY. She ranks #1 for FL, #2 for \$M and #15 for \$C among all non-parent daughters of Home Run.

When you sort her for her combination of \$M and \$C against all non-parent daughters of Home Run, she is the only one with her figures.



Green Garden Lady T276

BEAR HUSTLER OF B272 E522



Lot 3A

BEAR Hustler of B272 E522

Adam Moss

3A BEAR HUSTLER OF B272 E522

Birth Date: 08-19-2025 Cow #21327119 Tattoo: E522

Sire **FF Rito Hustler 1B69** 20325042
 *SEO Ultra Provider
 *RMRK Rita 0237

Dam **B I G Clarity of T276 B272** 20525871
 *Connealy Clarity
 *Green Garden Lady T276

*G A R Momentum K836
 *Chair Rock Progress 3023
 *Thomas Edison 6764
 *RMRK Rita 8232
 #Cherry Creek Land Grant
 *Breshie of Conanga 6988
 *Gardens Cache
 Green Garden Lady Q277



SM +92
 SW +87
 SB +239
 SC +402

| CED | BW | WW | YW | SC | HP | MILK | DOC | CLAW | ANGLE | HS | CWT | MARB | RIB |
|-----|------|-----|------|-------|-------|------|-----|------|-------|------|-----|-------|-------|
| +0 | +3.6 | +92 | +166 | +1.06 | +14.8 | +27 | +25 | +3.4 | +4.7 | +2.0 | +84 | +1.65 | +1.15 |

| ANGUS | CED | BW | WW | YW | DMI | YH | SC | DOC | HP | CEM | MLK | MW | MH | CW | MRB | RE | FAT | TND | PAP | CLW | ANGL | HS |
|-------|-----|----|----|----|-----|----|----|-----|----|-----|-----|----|----|----|-----|----|-----|-----|-----|-----|------|----|
| 51 | 49 | 15 | 5 | 95 | 36 | 21 | 24 | 3 | 80 | 60 | 42 | 59 | 16 | 6 | 10 | 15 | 54 | 70 | 6 | 50 | 23 | |

Open Heifer

The Hustler sons and daughters are being well received in the cattle market. They have a lot of muscle and growth. This female will offers some added frame and length. She predicts to produce progeny with added growth, maternal value, solid management traits and premium carcass figures. This group of sisters also stem from the great Green Garden Lady T276 by way of B272, owned by BIG Timber. She possesses 21 EPDs and Indexes in the top 35% or better. There will be a lot of different sires you can use on this group of sisters to improve genetic value in your herd. Don't miss out here!



BIG Clarity of T276 B272 - Dam of Lots 3A, 3B, & 3C

BIG CLARITY OF T276 B272 SISTERS

E526 is the #9 WW, #5 YW, #4 Radg, and #15 FL non-parent daughter of Hustler in the breed. She offers a balanced genetic profile for Production, Maternal, Management and Carcass Values and should make a great asset to any herd.



Lot 3B

BEAR Hustler of B272 E526

Adam Moss

3B BEAR HUSTLER OF B272 E526

Birth Date: 08-31-2025

Cow **+*21339065**

Tattoo: E526

*SEO Ultra Provider

*G A R Momentum K836

Sire **+*FF Rito Hustler 1B69**

*Chair Rock Progress 3023

20325042

*RMRK Rita Q237

*Thomas Edison 6764

*RMRK Rita 8232

#Cherry Creek Land Grant

*Breshie of Conanga 6988

*Gardens Cache

Green Garden Lady Q277



| |
|------|
| SM |
| +71 |
| SW |
| +85 |
| SB |
| +229 |
| SC |
| +368 |

Dan **+*B I G Clarity of T276 B272**

20525871

*Green Garden Lady T276

| CED | BW | WW | YW | SC | HP | MILK | DOC | CLAW | ANGLE | HS | CWT | MARB | RIB |
|-----|------|------|------|-----|-------|------|-----|------|-------|-----|-----|-------|-----|
| +8 | +3.0 | +100 | +178 | +85 | +11.1 | +21 | +21 | +39 | +46 | +13 | +79 | +1.76 | +76 |

| ANGUS | CED | BW | WW | YW | DMI | YH | SC | DOC | HP | CEM | MLK | MW | MH | CW | MRB | RE | FAT | TND | PAP | CLW | ANGL | HS |
|-------|-----|----|----|----|-----|----|----|-----|----|-----|-----|----|----|----|-----|----|-----|-----|-----|-----|------|----|
| 6 | 39 | 6 | 4 | 91 | 35 | 68 | 45 | 22 | 40 | 82 | 10 | 42 | 17 | 1 | 45 | 64 | 54 | 30 | 16 | 33 | 7 | |

Open Heifer

3C BEAR HUSTLER OF B272 E530

Birth Date: 09-07-2025

Cow **+*21341634**

Tattoo: E530

*SEO Ultra Provider

*G A R Momentum K836

Sire **+*FF Rito Hustler 1B69**

20325042

*RMRK Rita Q237

*Chair Rock Progress 3023

*Thomas Edison 6764

*RMRK Rita 8232

#Cherry Creek Land Grant

*Breshie of Conanga 6988

*Gardens Cache

Green Garden Lady Q277



| |
|------|
| SM |
| +94 |
| SW |
| +76 |
| SB |
| +210 |
| SC |
| +366 |

Dan **+*B I G Clarity of T276 B272**

20525871

*Green Garden Lady T276

| CED | BW | WW | YW | SC | HP | MILK | DOC | CLAW | ANGLE | HS | CWT | MARB | RIB |
|-----|----|-----|------|-----|-------|------|-----|------|-------|-----|-----|-------|-----|
| +12 | +9 | +72 | +121 | +97 | +14.7 | +27 | +13 | +26 | +40 | +17 | +58 | +1.78 | +73 |

| ANGUS | CED | BW | WW | YW | DMI | YH | SC | DOC | HP | CEM | MLK | MW | MH | CW | MRB | RE | FAT | TND | PAP | CLW | ANGL | HS |
|-------|-----|----|----|----|-----|----|----|-----|----|-----|-----|----|----|----|-----|----|-----|-----|-----|-----|------|----|
| 7 | 15 | 32 | 63 | 79 | 26 | 14 | 84 | 3 | 43 | 33 | 39 | 51 | 23 | 2 | 25 | 57 | 21 | 41 | 1 | 13 | 10 | |

Open Heifer

Lot 3C

BEAR Hustler of B272 E530

Adam Moss

This sister from the B272 Flush offers the best Calving Ease and BW combination of the sisters. You can also appreciate her incredible values for Claw, Angle, PAP, and HS. She is the #10 non-parent daughter of Hustler in the breed and offers great value for Marbling.

TOP 10% TOP 25%

GAR SURE FIRE 598 FAMILY



GAR Sure Fire 598 - Dam of Lots 4A-4C



GAR Alpha



Byrd Bullseye



4A ALPHA X SURE FIRE 598

Due Date: 09-14-2026

Heifer Pregnancy

| | | | | | | | | | | | | | | |
|------|-----------------------------------|-----|-----|------|-----|-------|------|-----|------|-------|-----|-----------------------------|-------|-------|
| Sire | *E W A Captain | | | | | | | | | | | #*KB-Full Measure C40 | | |
| | **G A R Alpha 20825957 | | | | | | | | | | | *E W A 8113 of 531 Method | | |
| Dam | *E W A 102 of 848 Home Town | | | | | | | | | | | **G A R Home Town | | |
| | #+*G A R Sure Fire | | | | | | | | | | | *E W A 848 of 678 Peyton | | |
| Sire | **G A R Sure Fire 598 19266240 | | | | | | | | | | | **Connealy In Sure 8524 | | |
| | *G A R Early Bird N955 | | | | | | | | | | | +Chair Rock 5050 G A R 8086 | | |
| Dam | *G A R Prediction 762 | | | | | | | | | | | *G A R Early Bird | | |
| | | | | | | | | | | | | *G A R Prediction 762 | | |
| Sire | CED | BW | WW | YW | SC | HP | MILK | DOC | CLAW | ANGLE | HS | CWT | MARB | RIB |
| | +16 | -.5 | +81 | +147 | +19 | +13.0 | +37 | +22 | +48 | +43 | +14 | +90 | +1.92 | +1.10 |
| Dam | CED | BW | WW | YW | SC | HP | MILK | DOC | CLAW | ANGLE | HS | CWT | MARB | RIB |
| | +10 | +4 | +63 | +120 | +99 | +10.4 | +29 | +34 | +53 | +33 | +24 | +55 | +1.52 | +1.71 |

Heifer Pregnancy Due 9.14.26 in a commercial recip.

This is a very unique pregnancy out of the long-time BIG Timber Donor, GAR Sure Fire 598, who has a \$50,000 daughter working at Stonewall Ridge and another daughter that was sold privately from Fulcher Farms to Kern for \$100,000 half interest to give her a \$200,000 total value. 598 has been a consistent donor, producing very functional and useful progeny that could work anywhere. This mating to the highly popular GAR Alpha should improve Growth, Fertility, Management and Carcass Values for a calf that could make a long-term impact on your program. Short list kind of genetics here, don't miss out!



Lot 4C

BEAR Draft Pick of 598 E521

Adam Moss

4B BULLSEYE X SURE FIRE 598

Due Date: 09-14-2026

Heifer Pregnancy

Sire ****BYRD Bullseye 1186-A100**
20620255 *Vintage Blackcap 1186

+*Beal Breakthrough
+*G A R Prophet K263
*H P C A Sure Fire S6
#*GB Fireball 672
**Vintage Blackcap 9186
#*Connealy In Sure 8524
+Chair Rock 5050 G A R 8086
*G A R Early Bird
+*G A R Prediction 762

| Sire | Dam |
|------|------|
| SM | SM |
| +47 | +62 |
| SW | SW |
| +88 | +66 |
| SB | SB |
| +285 | +204 |
| SC | SC |
| +417 | +327 |

Dam ****G A R Sure Fire 598**
19266240 +*G A R Early Bird N955

| Sire | CED | BW | WW | YW | SC | HP | MILK | DOC | CLAW | ANGLE | HS | CWT | MARB | RIB |
|------|-----|-----|------|-------|-------|-----|------|-----|------|-------|------|-------|-------|-----|
| +10 | +8 | +92 | +174 | +1.07 | +10.1 | +29 | +21 | +47 | +32 | +05 | +102 | +1.79 | +1.68 | |

| Dam | CED | BW | WW | YW | SC | HP | MILK | DOC | CLAW | ANGLE | HS | CWT | MARB | RIB |
|-----|-----|-----|------|-------|-------|-----|------|-----|------|-------|-----|-------|-------|-----|
| +10 | +4 | +63 | +120 | +0.99 | +10.4 | +29 | +34 | +53 | +33 | +24 | +55 | +1.52 | +0.71 | |

Heifer Pregnancy in a registered recip (20864424)

This is an explosive mating that can move you forward quickly. Sired by the \$600,000 valued Byrd Bullseye and out of the Sure Fire 598 donor who you can set a clock by. Bullseye calves have shown early muscle, growth, and length. This mating will offer increased value for Growth, Fertility, Management Value and outrageous End Product Merit. They compliment each other very well, so buy with confidence!

4C BEAR DRAFT PICK OF 598 E521

Birth Date: 08-15-2025

Cow ****21327117**

Tattoo: E521

Sire ****PEAK Draft Pick**
20513315 +*Vintage Rita 0404

*Connealy Clarity
#Cherry Creek Land Grant
*Breshie of Conanga 6988
#*GB Fireball 672
+*44 Rita 6291
#*Connealy In Sure 8524
+Chair Rock 5050 G A R 8086
*G A R Early Bird
+*G A R Prediction 762



| SM |
|------|
| +91 |
| SW |
| +102 |
| SB |
| +233 |
| SC |
| +393 |

Dam ****G A R Sure Fire 598**
19266240 +*G A R Early Bird N955

| CED | BW | WW | YW | SC | HP | MILK | DOC | CLAW | ANGLE | HS | CWT | MARB | RIB |
|-----|-----|-----|------|-------|-------|------|-----|------|-------|------|-----|-------|-------|
| +11 | -.2 | +88 | +156 | +1.22 | +12.7 | +31 | +36 | +55 | +40 | -.16 | +75 | +1.76 | +1.31 |

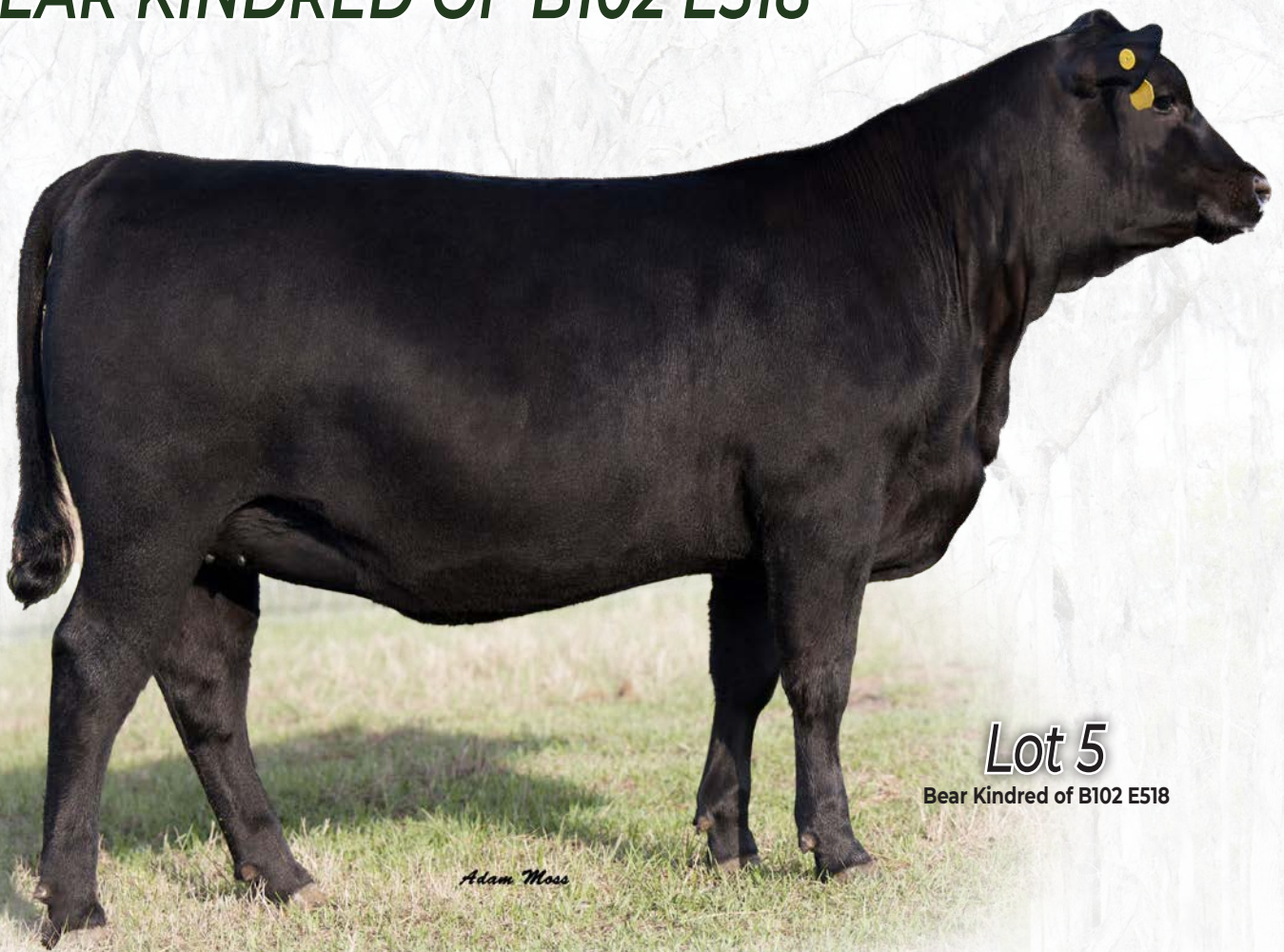
| ANGUS | CED | BW | WW | YW | DMI | YH | SC | DOC | HP | CEM | MLK | MW | MH | CW | MRB | RE | FAT | TND | PAP | CLW | ANGL | HS |
|-------|-----|----|----|----|-----|----|----|-----|----|-----|-----|----|----|----|-----|----|-----|-----|-----|-----|------|----|
| 36 | 32 | 25 | 16 | 82 | 83 | 39 | 1 | 14 | 51 | 38 | 68 | 86 | 14 | 3 | 2 | 49 | 96 | 37 | 39 | 6 | 1 | |

Open Heifer

Check out this super stout daughter of PEAK Draft Pick! She has a ton of rear quarter, big rib and top; she will be easy to find every time you go to the pasture. You can appreciate her style, but you can also appreciate her genetic value and predictions for Production, Maternal, Management, and Carcass Values. She offers a great spread from BW to YW, Excellent Fertility, top 10% \$Maternal Index, Balanced Management Predictions, and Premium Carcass Merit. She is in the top 15% for \$M and \$G while being in the top 4% or better for \$W, \$G, \$B and \$C!

| TOP 10% | TOP 25% |
|---------|---------|
| 10% | 25% |

BEAR KINDRED OF B102 E518



Lot 5

Bear Kindred of B102 E518

Adam Moss

5 BEAR KINDRED OF B102 E518

Birth Date: 07-26-2025

Cow **21327118**

Tattoo: E518

Sire ***K A Kindred**
20446645

#*GB Fireball 672
*K A Miss High Weigh 862

+*G A R Sure Fire 6404
*GB Anticipation 432
+*E W A High Weigh 3123
K A Miss Discovery 5163



SM
+64
SW
+55
SB
+247
SC
+384

Dam ***BIG Home Town of T276 B102**
19947596

#*G A R Home Town
*Green Garden Lady T276

#*G A R Ashland
+*Chair Rock Sure Fire 6095
*Gardens Cache
Green Garden Lady Q277

This smooth-made Kindred daughter is out of a highlight donor in the BIG Timber Program who also stems from the great Lady T276. B102 is a donor at BIG Timber who is producing some exceptional calves and we are glad to offer you this super balanced Kindred daughter. In the 2025 December BIG Timber Online Sale, B102 had a highlight daughter by Draft Pick selected by Friendship Farms in Canoochee, GA for \$32,000. This Kindred daughter possesses a very balanced set of EPDs with high-ranking values for Radg, HP, Teat, Uddr, Doc, HS, CW, Marbling, RE, SF, \$G, \$B and \$C.

| CED | BW | WW | YW | SC | HP | MILK | DOC | CLAW | ANGLE | HS | CWT | MARB | RIB |
|-----|------|-----|------|------|-------|------|-----|------|-------|------|-----|-------|-----|
| +6 | +1.0 | +67 | +134 | +0.6 | +14.0 | +22 | +25 | +51 | +50 | -.32 | +67 | +1.83 | +93 |

| ANGUS | CED | BW | WW | YW | DMI | YH | SC | DOC | HP | CEM | MLK | MW | MH | CW | MRB | RE | FAT | TND | PAP | CLW | ANGL | HS |
|-------|-----|----|----|----|-----|----|----|-----|----|-----|-----|----|----|----|-----|----|-----|-----|-----|-----|------|----|
| 78 | 56 | 78 | 14 | 68 | 87 | 79 | 6 | 41 | 13 | 90 | 51 | 74 | 34 | 1 | 30 | 74 | 85 | 47 | 30 | 24 | 1 | |



BIG Home Town of T276 B102 - Dam of Lot 4

BEAR POWERCAT OF B118 E534



Lot 6

BEAR Powercat of B118 E534

Adam Moss

6 BEAR POWERCAT OF B118 E534

Birth Date: 10-10-2025

Cow #*21375636

Tattoo: E534

*E & B Wildcat 9402

#**GAR Discovery 6737H

Sire *G A R Powercat

E&B Lady Plus 643



20665222

*Daltons Rita 0206

#*GB Fireball 672

\$M

+89

\$W

+82

\$B

+217

\$C

+370

*Gardens Opus

*Gardens Cache

Dam **B I G Opus of 2657 B118

#Green Garden Emma P120

19989107

*G A R Momentum 2657

#*G A R Momentum

+*G A R Early Bird N1065

| CED | BW | WW | YW | SC | HP | MILK | DOC | CLAW | ANGLE | HS | CWT | MARB | RIB |
|-----|------|-----|------|-----|-------|------|-----|------|-------|------|-----|-------|-----|
| +11 | -1.4 | +72 | +137 | +45 | +15.7 | +31 | +24 | +4.5 | +4.4 | +2.0 | +61 | +1.65 | +59 |

| ANGUS | CED | BW | WW | YW | DMI | YH | SC | DOC | HP | CEM | MLK | MW | MH | CW | MRB | RE | FAT | TND | PAP | CLW | ANGL | HS |
|-------|-----|----|----|----|-----|----|----|-----|----|-----|-----|----|----|----|-----|----|-----|-----|-----|-----|------|----|
| | 55 | 46 | 33 | 8 | 65 | 59 | 57 | 22 | 3 | 48 | 12 | 68 | 82 | 6 | 2 | 50 | 95 | 44 | 56 | 34 | 35 | 11 |

Open Heifer

She offers strength for genetic merit for maternal strength, calving ease, and overall profitability, while excelling even further in carcass quality and end-product value. This unique combination of management traits, moderate birth traits, and premium carcass merit makes her a great option for the cow herd. Whether you're retaining replacements or targeting value-based marketing, this female offers the genetic strength to move your program forward with confidence. Top 10% or better for \$M, \$F, \$G, \$B and \$C.



BIG Opus of 2657 B118 - Dam of Lot 6

RCC HOME TOWN R1761 INFLUENCE



Lot 7A
BEAR Fireproof of R1761 of E404

7A BEAR FIREPROOF OF R1761 E404

Birth Date: 02-23-2024 Cow *20971610 Tattoo: E404

Sire ****G A R Fireproof** 20370357
 #*GB Fireball 672
 #*Chair Rock Sure Fire 6095

Dam ****RCC Home Town R1761** 20494590
 #*G A R Home Town
 #*RCC Phoenix L1119

*+G A R Sure Fire 6404
 *GB Anticipation 432
 #*+G A R Sure Fire
 #*Chair Rock Progress 3005
 #*+G A R Ashland
 #*Chair Rock Sure Fire 6095
 #*G A R Phoenix
 #*RCC 100X L497



| |
|------|
| SM |
| +65 |
| SW |
| +81 |
| SB |
| +280 |
| SC |
| +428 |

| CED | BW | WW | YW | SC | HP | MILK | DOC | CLAW | ANGLE | HS | CWT | MARB | RIB |
|-----|------|-----|------|-----|-------|------|-----|------|-------|------|------|-------|-------|
| +9 | +2.5 | +85 | +160 | +38 | +11.3 | +30 | +19 | +5.4 | +3.8 | -.01 | +9.4 | +1.81 | +1.31 |

| ANGUS | CED | BW | WW | YW | DMI | YH | SC | DOC | HP | CEM | MILK | MW | MH | CW | MRB | RE | FAT | TND | PAP | CLW | ANGL | HS |
|-------|-----|----|----|----|-----|----|----|-----|----|-----|------|----|----|----|-----|----|-----|-----|-----|-----|------|----|
| | 83 | 96 | 23 | 2 | 94 | 28 | 59 | 41 | 40 | 21 | 58 | 23 | 20 | 1 | 1 | 4 | 27 | 98 | 40 | 66 | 13 | 4 |

AI'd to GAR Wallace; due to calve 12/02/2026

Performance-driven and built for profitability, this exceptional female stands at the forefront of the breed for carcass excellence, offering a rare combination of quality, yield, and end-product consistency. She goes a step further by ranking among the top 5% best for post-weaning performance and overall economic return, making her a true powerhouse for growth, balanced management value and premium end product merit. Cattle like this are designed to add value at every stage; delivering the kind of genetics that keep you competitive in today's market while positioning your program for the future. She offers 22 traits and indexes in the top 35% of the breed or better.

7B BEAR FIREPROOF OF R1761 E533

Birth Date: 10-08-2025 Cow *21370770 Tattoo: E533

Sire ****G A R Fireproof** 20370357
 #*GB Fireball 672
 #*Chair Rock Sure Fire 6095

Dam ****RCC Home Town R1761** 20494590
 #*G A R Home Town
 #*RCC Phoenix L1119

*+G A R Sure Fire 6404
 *GB Anticipation 432
 #*+G A R Sure Fire
 #*Chair Rock Progress 3005
 #*+G A R Ashland
 #*Chair Rock Sure Fire 6095
 #*G A R Phoenix
 #*RCC 100X L497



| |
|------|
| SM |
| +78 |
| SW |
| +90 |
| SB |
| +243 |
| SC |
| +393 |

| CED | BW | WW | YW | SC | HP | MILK | DOC | CLAW | ANGLE | HS | CWT | MARB | RIB |
|-----|----|-----|------|-----|-------|------|-----|------|-------|------|------|-------|-------|
| +13 | +3 | +78 | +142 | +11 | +12.2 | +35 | +28 | +5.6 | +4.7 | -.06 | +7.9 | +1.70 | +0.98 |

| ANGUS | CED | BW | WW | YW | DMI | YH | SC | DOC | HP | CEM | MILK | MW | MH | CW | MRB | RE | FAT | TND | PAP | CLW | ANGL | HS |
|-------|-----|----|----|----|-----|----|----|-----|----|-----|------|----|----|----|-----|----|-----|-----|-----|-----|------|----|
| | 75 | 83 | 51 | 20 | 73 | 42 | 79 | 21 | 39 | 16 | 25 | 76 | 39 | 8 | 3 | 29 | 71 | 97 | 25 | 93 | 69 | 1 |

Open Heifer

Balanced, high-impact genetics define this impressive heifer. She excels for carcass weight and marbling, offering the kind of performance that translates into heavier, higher-quality end products. Backed by elite rankings for feedlot efficiency and overall value, she brings together growth, carcass merit, and economic return in one complete package. She offers double-digit calving ease, tight high growth, excellent docility, PAP and HS. She has an incredible combination of \$Values to indicate profit for your herd.



Lot 7B
BEAR Fireproof of R1761 of E533



FHCC Majority 1551

7C MAJORITY X E404

3 IVF Embryos

| | | | |
|--|----------------------------|----------------------------|--|
| *Connealy Clarity | | #Cherry Creek Land Grant | |
| Sire **FHCC Majority 1551 | | *Breshie of Conanga 6988 | |
| 20119568 | *Woodland Blackcap Lady 84 | #*G A R Sure Fire | |
| | +*G A R Fireproof | #Basin Blackcap Lady 0172 | |
| Dam *BEAR Fireproof of R1761 E404 | | #*GB Fireball 672 | |
| 20971610 | +*RCC Home Town R1761 | *Chair Rock Sure Fire 6095 | |
| | | #*G A R Home Town | |
| | | +*RCC Phoenix L1119 | |

| Sire | Dam |
|------|------|
| SM | SM |
| +85 | +65 |
| SW | SW |
| +99 | +81 |
| SB | SB |
| +258 | +280 |
| SC | SC |
| +420 | +428 |

| Sire | Dam | | | | | | | | | | | | |
|------|-----|-----|------|-------|-------|------|-----|------|-------|-----|-----|-------|-----|
| CED | BW | WW | YW | SC | HP | MILK | DOC | CLAW | ANGLE | HS | CWT | MARB | RIB |
| +11 | -3 | +82 | +150 | +1.71 | +13.5 | +41 | +33 | +41 | +43 | +16 | +83 | +1.85 | +86 |

| Dam | Sire | | | | | | | | | | | | |
|-----|------|-----|------|-----|-------|------|-----|------|-------|------|-----|-------|-------|
| CED | BW | WW | YW | SC | HP | MILK | DOC | CLAW | ANGLE | HS | CWT | MARB | RIB |
| +9 | +2.5 | +85 | +160 | +38 | +11.3 | +30 | +19 | +54 | +38 | -.01 | +94 | +1.81 | +1.31 |

3 IVF Embryos with a 1 pregnancy guarantee put in by a certified embryologist. These embryos are by Lot 7A BEAR Fireproof of R1761 E404 and the popular FHCC Majority 1551. They complement each other very well for Production, Maternal Value, Management Traits and Carcass Merit. There is a lot of potential in this mating to be very complete and improve overall genetic value.

8 BEAR FIREPROOF OF B130 E402

Birth Date: 01-14-2024

Cow *20971609

Tattoo: E402

| | | | |
|---|----------------------------|----------------------------|--|
| #GB Fireball 672 | | *G A R Sure Fire 6404 | |
| Sire *G A R Fireproof | | *GB Anticipation 432 | |
| 20370357 | *Chair Rock Sure Fire 6095 | #*G A R Sure Fire | |
| | +*G A R Home Town | *Chair Rock Progress 3005 | |
| Dam **B I G Home Town of 2657 B130 | | #*G A R Ashland | |
| 20023258 | *G A R Momentum 2657 | *Chair Rock Sure Fire 6095 | |
| | | #*G A R Momentum | |
| | | +*G A R Early Bird N1065 | |

| Sire | Dam |
|------|------|
| SM | SM |
| +90 | +76 |
| SW | SW |
| +76 | +250 |
| SB | SB |
| +250 | +414 |
| SC | SC |
| +414 | |

| Sire | Dam | | | | | | | | | | | | |
|------|-----|-----|------|-----|-------|------|-----|------|-------|------|-----|-------|-----|
| CED | BW | WW | YW | SC | HP | MILK | DOC | CLAW | ANGLE | HS | CWT | MARB | RIB |
| +13 | -.8 | +59 | +112 | +96 | +17.2 | +40 | +23 | +57 | +50 | -.05 | +61 | +2.01 | +82 |

| Dam | Sire | | | | | | | | | | | | |
|-----|------|-----|------|-----|-------|------|-----|------|-------|------|-----|-------|-------|
| CED | BW | WW | YW | SC | HP | MILK | DOC | CLAW | ANGLE | HS | CWT | MARB | RIB |
| +9 | +2.5 | +85 | +160 | +38 | +11.3 | +30 | +19 | +54 | +38 | -.01 | +94 | +1.81 | +1.31 |

Open
This Fireproof daughter stems from the great B130 by way of GAR Momentum 2657 who is a donor in the BIG Timber program. She possesses a great combination of CED, BW, HP, Milk. When you study her \$Maternal Index you will see that these favorable traits helped earn her a top 10% \$M. She excels for Marbling at a +2 Marbling EPD also. She possesses a very profitable outlook when you study her combination of \$M, \$W, \$F, \$G, \$B and \$C. This is a female that can move the needle in a program.



Lot 8
BEAR Fireproof of B130 E402

FLEETWOOD DAUGHTERS



KC Rita 227 - Dam of Lot 9

9 BEAR FLEETWOOD OF 227 E408

Birth Date: 06-13-2024 Cow #*21019301 Tattoo: E408

Sire **+*B I G Fleetwood** 20266041
 *Poss Deadwood
 *Green Garden Lady T276

Dam **+*KC Rita 227** 20357734
 +*HPCA Veracious
 +*Daltons Rita 6291

#*Poss Maverick
 #*Poss Ellunamere 399
 *Gardens Cache
 Green Garden Lady Q277
 #*Mill Brae Identified 4031
 +*H P C A Sunrise A246
 +*G A R Oracle
 +*G A R Daybreak 82

| |
|------|
| SM |
| +85 |
| SW |
| +94 |
| SB |
| +244 |
| SC |
| +401 |

| CED | BW | WW | YW | SC | HP | MILK | DOC | CLAW | ANGLE | HS | CWT | MARB | RIB |
|-----|------|-----|------|-----|-------|------|-----|------|-------|-----|-----|-------|-------|
| +7 | +1.1 | +82 | +142 | +59 | +11.2 | +33 | +25 | +47 | +47 | +82 | +79 | +1.62 | +1.24 |

| ANGUS | CED | BW | WW | YW | DMI | YH | SC | DOC | HP | CEM | MLK | MW | MH | CW | MRB | RE | FAT | TND | PAP | CLW | ANGL | HS |
|-------|-----|----|----|----|-----|----|----|-----|----|-----|-----|----|----|----|-----|----|-----|-----|-----|-----|------|----|
| | 22 | 28 | 19 | 27 | 42 | 19 | 63 | 27 | 40 | 74 | 15 | 57 | 47 | 9 | 3 | 22 | 58 | 12 | 49 | 37 | 23 | 87 |

AI'd to BIG Free Bird; due to calve 12/02/2026

This cow was AI'd on 2/23/26 to RSA True Balance, stacking elite genetics on an already powerful foundation. She ranks among the best in the breed for carcass performance, combining quality and yield with consistency you can count on. On top of that, she excels for overall economic indexes, placing her among the most profit-driven females you'll find. With this kind of genetic profile and the enhanced merit and phenotype that True Balance has to offer, this female could be a great asset to any program.



Lot 9

BEAR Fleetwood of 227 E408



Lot 10

BEAR Fleetwood of R91 E407

10 BEAR FLEETWOOD OF R91 E407

Birth Date: 06-09-2024 Cow #*20975369 Tattoo: E407

Sire **+*B I G Fleetwood** 20266041
 *Poss Deadwood
 *Green Garden Lady T276

Dam **+*G A R Identified R91** 20380291
 #*Mill Brae Identified 4031
 +*G A R Sure Fire 427

#*Poss Maverick
 #*Poss Ellunamere 399
 *Gardens Cache
 Green Garden Lady Q277
 #*Koupals B&B Identity
 *Mill Brae Pro Blackcap 1092
 #*G A R Sure Fire
 +*Chair Rock Prophet 3054

| |
|------|
| SM |
| +47 |
| SW |
| +77 |
| SB |
| +249 |
| SC |
| +370 |

| CED | BW | WW | YW | SC | HP | MILK | DOC | CLAW | ANGLE | HS | CWT | MARB | RIB |
|-----|------|-----|------|-------|------|------|-----|------|-------|------|-----|-------|-------|
| +0 | +2.6 | +83 | +157 | +1.30 | +9.0 | +29 | +21 | +4.4 | +4.4 | +2.5 | +87 | +1.34 | +1.33 |

| ANGUS | CED | BW | WW | YW | DMI | YH | SC | DOC | HP | CEM | MLK | MW | MH | CW | MRB | RE | FAT | TND | PAP | CLW | ANGL | HS |
|-------|-----|----|----|----|-----|----|----|-----|----|-----|-----|----|----|----|-----|----|-----|-----|-----|-----|------|----|
| | 74 | 75 | 19 | 3 | 43 | 21 | 39 | 14 | 82 | 83 | 24 | 25 | 54 | 4 | 3 | 4 | 20 | 3 | 59 | 16 | 28 | 6 |

AI'd to GAR Home Run; due to calve 10/28/2026 with a bull calf

A bred female with a mating stacked for performance, this cow was AI'd on 1/19/26 to GAR Home Run, combining proven genetics with forward-looking potential. She excels for growth and is backed by outstanding carcass merit that supports value on the rail. Ranking among the very best for feedlot performance and overall profit predictability, she brings together the traits that matter when finished product is priority. She combines great marks for Growth, Fertility, with balanced management traits out of the proven donor, GAR Identified R91.



GAR Identified R91 - Dam of Lot 10

BRED FEMALES



BIG Salvation of T276 B138 - Dam of Lot 11

77 B I G WINCHESTER B138 B349

Birth Date: 06-11-2023 Cow ****20676016** Tattoo: B349

Sire ****Poss Winchester** 20060473
 *Connealy Clarity
 *Poss Blueblood 6502

Dam ****B I G Salvation of T276 B138** 20049638
 *SG Salvation
 *Green Garden Lady T276

#Cherry Creek Land Grant
 *Breshie of Conanga 6988
 Poss Easy Impact 0119
 Poss Blueblood 920
 #**Baldrige Alternative E125
 *MGR JP Rita 7037
 *Gardens Cache
 Green Garden Lady Q277

| |
|------|
| SM |
| +56 |
| SW |
| +86 |
| SB |
| +278 |
| SC |
| +417 |

| CED | BW | WW | YW | SC | HP | MILK | DOC | CLAW | ANGLE | HS | CWT | MARB | RIB |
|-----|------|-----|------|-----|------|------|-----|------|-------|-----|-----|-------|-------|
| +4 | +1.2 | +81 | +152 | +91 | +9.9 | +34 | +23 | +39 | +46 | +65 | +92 | +1.94 | +1.29 |

| ANGUS | CED | BW | WW | YW | DMI | YH | SC | DOC | HP | CEM | MILK | MW | MH | CW | MRB | RE | FAT | TND | PAP | CLW | ANGL | HS |
|-------|-----|----|----|----|-----|----|----|-----|----|-----|------|----|----|----|-----|----|-----|-----|-----|-----|------|----|
| 51 | 48 | 17 | 2 | 77 | 59 | 34 | 27 | 23 | 50 | 14 | 22 | 23 | 2 | 1 | 4 | 65 | 11 | 35 | 30 | 61 | 69 | |

AI'd to BIG Free Bird on 2.23.26

B349 is another female in the program with a dose of Green Garden Lady T276 in the pedigree. If you like cattle with growth, Milk, improved value for Doc, Claw, and Carcass Value, she should be an asset. She ranks in the top 5% or better for YW, Radg, CW, Marb, RE, Dairy Indexes, \$W, \$F, \$G, \$B and \$C. The Winchester daughters are making solid females and with the combination to T276 in this pedigree, you should be set for success.

12 B I G PARAGON OF T276 B303

Birth Date: 01-13-2023 Cow ****20560280** Tattoo: B303

Sire ****Ankonian Paragon OC4** 19719477
 +*G A R Combustion
 +*G A R Early Bird N985

Dam ***Green Garden Lady T276** 19123914
 *Gardens Cache
 Green Garden Lady Q277

#**G A R Sure Fire
 +*G A R Momentum 1724
 *G A R Early Bird
 +*G A R Complete N281
 #*A A R Ten X 7008 S A
 Green Garden Rita K078
 *Gardens Prime
 Green Garden Lady N275

| |
|------|
| SM |
| +95 |
| SW |
| +80 |
| SB |
| +240 |
| SC |
| +406 |

| CED | BW | WW | YW | SC | HP | MILK | DOC | CLAW | ANGLE | HS | CWT | MARB | RIB |
|-----|----|-----|------|-----|-------|------|-----|------|-------|-----|-----|-------|-------|
| +6 | +7 | +67 | +123 | +63 | +16.1 | +33 | +19 | +64 | +55 | +45 | +72 | +1.66 | +1.20 |

| ANGUS | CED | BW | WW | YW | DMI | YH | SC | DOC | HP | CEM | MILK | MW | MH | CW | MRB | RE | FAT | TND | PAP | CLW | ANGL | HS |
|-------|-----|----|----|----|-----|----|----|-----|----|-----|------|----|----|----|-----|----|-----|-----|-----|-----|------|----|
| 60 | 48 | 61 | 40 | 60 | 44 | 62 | 26 | 3 | 40 | 18 | 93 | 52 | 10 | 2 | 7 | 34 | 39 | 32 | 91 | 91 | 33 | |

AI'd to Baldrige Heat Seeker; due to calve 10/28/2026 with a heifer calf

Look out! Another direct daughter of the great T276! She offers low birth with top 10% value for \$Maternal Index and high-ranking Carcass Values. Don't let her efficiency traits slip by you, she is in the top 35% of the breed for DMI and top 20% for \$EN. She has the indexes to predict profit in the program, so make sure and give her a look on sale day.



Lot 12
BIG Paragon of T276 B303

EMBRYOS



**BIG Opus of 2657 B118,
a full sister to the dam of lot 13.**



FHCC Majority 1551

13 MAJORITY X B119

3 IVF Embryos

Sire ****FHCC Majority 1551**
20119568
*Connealy Clarity
*Woodland Blackcap Lady 84

Dam ****BIG Opus of 2657 B119**
19989108
*Gardens Opus
*G A R Momentum 2657

#Cherry Creek Land Grant
*Breshie of Conanga 6988
**G A R Sure Fire
#Basin Blackcap Lady 0172
*Gardens Cache
#Green Garden Emma P120
#*G A R Momentum
*G A R Early Bird N1065

| Sire | Dam |
|------|------|
| SM | SM |
| +85 | +71 |
| SW | SW |
| +99 | +69 |
| SB | SB |
| +258 | +234 |
| SC | SC |
| +420 | +375 |

| Sire | CED | BW | WW | YW | SC | HP | MILK | DOC | CLAW | ANGLE | HS | CWT | MARB | RIB |
|------|-----|-----|------|-------|-------|-----|------|------|------|-------|-----|-------|------|-----|
| +11 | -.3 | +82 | +150 | +1.71 | +13.5 | +41 | +33 | +.41 | +.43 | +.16 | +83 | +1.85 | +86 | |
| Dam | CED | BW | WW | YW | SC | HP | MILK | DOC | CLAW | ANGLE | HS | CWT | MARB | RIB |
| +11 | -.2 | +65 | +120 | +.27 | +13.0 | +28 | +19 | +.47 | +.54 | +.44 | +67 | +1.94 | +39 | |

3 IVF Embryos with a 1 pregnancy guarantee put in by a certified embryologist.
This set of IVF embryos by Majority and B119 should offer great value for Calving Ease, Growth, Fertility, improved Management Value and Carcass Merit. Majority semen has been tough to get over the last fall and spring, so take this opportunity to capitalize on a very complementary mating that should have plenty of eye appeal and genetic strength supported by plenty of cow power.

14 TRUE BALANCE X RITA 83

3 IVF Embryos

Sire ***RSA True Balance 1311**
20479542
#*G A R Home Town
*RSA Forever Lady 9204

Dam ****Kern Rita 83**
20479594
*Connealy Clarity
*E W A 046 of 7607 Teamwork

#*G A R Ashland
**Chair Rock Sure Fire 6095
**EXAR Monumental 6056B
*RSA Forever Lady 7232
*Cherry Creek Land Grant
*Breshie of Conanga 6988
*E W A Teamwork 821
*G A R Momentum N607

| Sire | Dam |
|------|------|
| SM | SM |
| +86 | +63 |
| SW | SW |
| +88 | +91 |
| SB | SB |
| +258 | +243 |
| SC | SC |
| +421 | +378 |

| Sire | CED | BW | WW | YW | SC | HP | MILK | DOC | CLAW | ANGLE | HS | CWT | MARB | RIB |
|------|------|-----|------|-------|-------|-----|------|------|------|-------|-----|-------|------|-----|
| +14 | -.2 | +76 | +133 | +1.41 | +10.6 | +33 | +14 | +.50 | +.43 | +.29 | +72 | +2.02 | +95 | |
| Dam | CED | BW | WW | YW | SC | HP | MILK | DOC | CLAW | ANGLE | HS | CWT | MARB | RIB |
| +8 | +2.5 | +91 | +161 | +.90 | +8.8 | +29 | +24 | +.47 | +.46 | +.10 | +92 | +1.44 | +142 | |

3 IVF Embryos with a 1 pregnancy guarantee put in by a certified embryologist.
True Balance has worked really well on Clarity daughters. Kern Rita 83 has a son selling as Lot 15 and that mating jumped well above parent average on numeric value. This mating will offer plenty of calving ease, growth, and fertility. This mating will make a great impact for Teat and Uddr EPDs, solid management, and outstanding carcass values. This is a mating that could move you to the next level!



RSA True Balance

BULL CALVES



Lot 15

BEAR Home Run of 83 E519

Adam Moss

15 BEAR HOME RUN OF 83 E519

Birth Date: 08-06-2025 Bull *21317496 Tattoo: E519

Sire ****G A R Home Run** 20508438
 #*G A R Home Town
 #*Chair Rock Sure Fire 6095
 #*GB Fireball 672
 #*Williams Blackcap L 455-306
 #Cherry Creek Land Grant
 *Breshie of Conanga 6988
 *E W A Teamwork 821
 #*G A R Momentum N607

Dam ****Kern Rita 83** 20479594
 *Connealy Clarity
 #*E W A 046 of 7607 Teamwork

| |
|------|
| SM |
| +69 |
| SW |
| +91 |
| SB |
| +278 |
| SC |
| +430 |

| CED | BW | VW | YW | SC | HP | MILK | DOC | CLAW | ANGLE | HS | CWT | MARB | RIB |
|-----|-----|-----|------|-----|------|------|-----|------|-------|-----|-----|-------|-------|
| +14 | -.5 | +90 | +163 | +77 | +9.2 | +26 | +30 | +63 | +44 | +19 | +96 | +1.76 | +1.54 |

ANGUS 22 60 33 6 83 71 36 4 46 9 71 44 45 3 1 2 37 63 54 91 36 9

This young man checks the boxes for CED, BW, WW, YW, Radg, CEM, Teat, Uddr, Doc, HS, CW, Marb and RE. When you study his indexes, you can expect him to add profit for Weaning, Feedlot, Grid, and Beef Values. He's in the top 1% of the breed for CW, RE, \$F, \$G, \$B, and \$C! You can plan on profit at weaning, post weaning and all the way to the rail!

16 BEAR HOME RUN OF E304 E532

Birth Date: 10-04-2025 Bull *21367822 Tattoo: E532

Sire ****G A R Home Run** 20508438
 #*G A R Home Town
 #*Chair Rock Sure Fire 6095
 #*GB Fireball 672
 #*Williams Blackcap L 455-306
 #Cherry Creek Land Grant
 *Breshie of Conanga 6988
 *E W A Teamwork 821
 #*G A R Momentum N607

Dam ****BEAR Winchester of B138 E304** 20686515
 #*Poss Winchester
 #*Poss Blueblood 6502
 *SG Salvation
 *Green Garden Lady T276

| |
|------|
| SM |
| +78 |
| SW |
| +94 |
| SB |
| +256 |
| SC |
| +410 |

| CED | BW | VW | YW | SC | HP | MILK | DOC | CLAW | ANGLE | HS | CWT | MARB | RIB |
|-----|------|-----|------|-------|------|------|-----|------|-------|-----|-----|-------|-------|
| +9 | +1.6 | +89 | +156 | +1.62 | +9.7 | +30 | +29 | +48 | +55 | +45 | +83 | +2.01 | +1.22 |

ANGUS 26 45 26 8 89 69 8 4 40 13 53 30 41 7 1 6 63 80 29 30 68 30

E532 offers top 35% CED with high growth figures, fertility, outstanding carcass merit prediction and top 30% Maternal Index. He's a multi-purpose bull that will still sire calves that increase red meat yield and provide a great eating experience for beef consumers everywhere. Top 15% or better for WW, YW, Radg, SC, CEM, Doc, CW, Marb, RE, Dairy Indexes, \$W, \$F, \$G, \$B and \$C.



Lot 16

BEAR Home Run of E304 E532

BEAR Home Run of E304 E532 - Lot 16

Adam Moss

BULL CALVES



Lot 17

BEAR Fireproof of B349 E537

17 BEAR FIREPROOF OF B349 E537
 Birth Date: 10-18-2025 Bull *21381625 Tattoo: E537

Sire ****G A R Fireproof** 20370357
 #*GB Fireball 672
 +*Chair Rock Sure Fire 6095

Dam ****B I G Winchester B138 B349** 20676016
 +*Poss Winchester
 +*B I G Salvation of T276 B138

+*G A R Sure Fire 6404
 *GB Anticipation 432
 #**G A R Sure Fire
 +*Chair Rock Progress 3005
 *Connealy Clarity
 +*Poss Blueblood 6502
 *SG Salvation
 *Green Garden Lady T276



| |
|------|
| SM |
| +36 |
| SW |
| +83 |
| SB |
| +266 |
| SC |
| +381 |

If you are selling calves by the pound, you will appreciate his WW, YW, and CW EPD value with a top 1% Radg. E537 also offers great carcass value for Marb and RE and top 1% Dairy Indexes. A profitable selection for \$W, \$F, \$G, \$B and \$C. He combines a great Pedigree full of Carcass-Making Bulls with great females like Chair Rock Sure Fire 6095, Poss Blueblood 6502, and Green Garden Lady T276.

| CED | BW | VW | YW | SC | HP | MILK | DOC | CLAW | ANGLE | HS | CWT | MARB | RIB |
|-----|------|-----|------|-------|-------|------|-----|------|-------|-----|-----|-------|-------|
| +7 | +1.4 | +81 | +160 | +1.09 | +13.5 | +39 | +17 | +4.7 | +48 | +33 | +80 | +1.95 | +1.36 |

| ANGUS | CED | BW | VW | YW | DMI | YH | SC | DOC | HP | CEM | MLK | MW | MH | CW | MRB | RE | FAT | TND | PAP | CLW | ANGL | HS |
|-------|-----|----|----|----|-----|----|----|-----|----|-----|-----|----|----|----|-----|----|-----|-----|-----|-----|------|----|
| | 74 | 70 | 13 | 1 | 95 | 20 | 34 | 53 | 6 | 78 | 3 | 5 | 8 | 1 | 1 | 1 | 14 | 86 | 47 | 27 | 45 | 33 |



AGE ADVANTAGE BULLS



Lot 18
BIG Home Free of T276 B306

Adam Moss

18 **BIG HOME FREE OF T276 B306**
 Birth Date: 01-14-2023 Bull ***20560283** Tattoo: B306

Sire ****G A R Home Free** 19862808
 #*G A R Home Town
 #**G A R Ashland
 +*Chair Rock Sure Fire 6095
 #*G A R Momentum
 +*G A R Daybreak 342
 #*A A R Ten X 7008 S A
 Green Garden Rita K078
 *Gardens Prime
 Green Garden Lady N275

Dam ***Green Garden Lady T276** 19123914
 *Gardens Cache
 Green Garden Lady Q277

| |
|------|
| SM |
| +68 |
| SW |
| +75 |
| SB |
| +258 |
| SC |
| +403 |

| CED | BW | VW | YW | SC | HP | MILK | DOC | CLAW | ANGLE | HS | CWT | MARB | RIB |
|-----|------|-----|------|-------|-------|------|-----|------|-------|-----|-----|-------|-------|
| +11 | -1.1 | +76 | +147 | +1.11 | +12.0 | +24 | +27 | +66 | +54 | +26 | +86 | +1.57 | +1.04 |

| ANGUS | CED | BW | VW | YW | DMI | YH | SC | DOC | HP | CEM | MLK | MW | MH | CW | MRB | RE | FAT | TND | PAP | CLW | ANGL | HS |
|-------|-----|----|----|----|-----|----|----|-----|----|-----|-----|----|----|----|-----|----|-----|-----|-----|-----|------|----|
| 32 | 14 | 62 | 6 | 62 | 62 | 25 | 36 | 57 | 11 | 66 | 59 | 71 | 10 | 4 | 17 | 72 | 35 | 21 | 94 | 90 | 11 | |

B306 is a three-year-old we have used in the program. Sired by GAR Home Free and out of the great Green Garden Lady T276. He is a calving-ease specialist with high growth value, excellent fertility traits, and premium carcass merit. He's ready to go to work and cover plenty of ground. Top 5% or better for \$F, \$G, \$B, and \$C.

19 **BCF BOLD RULER 3154**
 Birth Date: 08-19-2023 Bull ***20764257** Tattoo: 3154

Sire ****BA7 Oaks Bold Ruler** 19984739
 #*Connealy Confidence Plus
 *Erica of Ellston T220
 #*Connealy Confidence 0100
 Elbanna of Conanga 1209
 #**Baldrige 38 Special
 #*Erica of Ellston R96
 #*G A R Sure Fire
 +*G A R Momentum 1724
 *G A R Early Bird
 +*G A R 5050 New Design 883

Dam ****TPC Combustion 147** 20238681
 +*G A R Combustion
 *G A R Early Bird 2325

| |
|------|
| SM |
| +96 |
| SW |
| +100 |
| SB |
| +226 |
| SC |
| +389 |

| CED | BW | VW | YW | SC | HP | MILK | DOC | CLAW | ANGLE | HS | CWT | MARB | RIB |
|-----|------|-----|------|-------|-------|------|-----|------|-------|-----|-----|-------|-----|
| +8 | +1.3 | +89 | +162 | +1.65 | +11.6 | +33 | +35 | +52 | +40 | +18 | +80 | +1.54 | +99 |

| ANGUS | CED | BW | VW | YW | DMI | YH | SC | DOC | HP | CEM | MLK | MW | MH | CW | MRB | RE | FAT | TND | PAP | CLW | ANGL | HS |
|-------|-----|----|----|----|-----|----|----|-----|----|-----|-----|----|----|----|-----|----|-----|-----|-----|-----|------|----|
| 52 | 65 | 10 | 4 | 99 | 56 | 8 | 3 | 43 | 33 | 11 | 49 | 40 | 5 | 3 | 14 | 70 | 91 | 46 | 73 | 32 | 8 | |



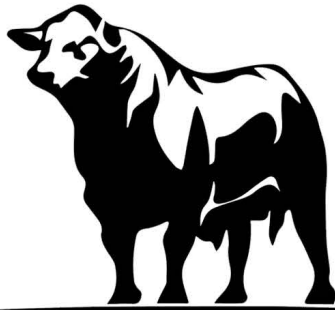
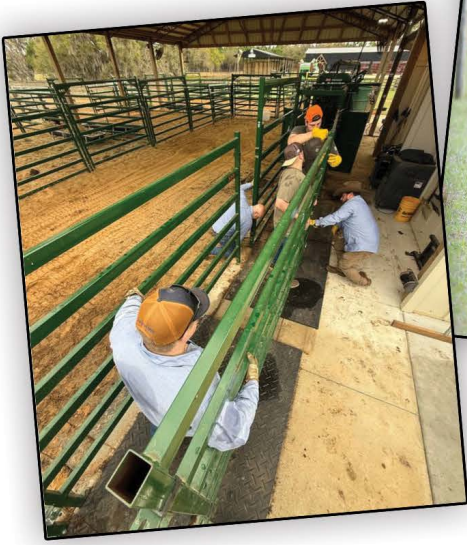
Lot 19
BCF Bold Ruler 3154

Adam Moss

BCF Bold Ruler 3154 - Lot 19

3154 is an attractive son of the great BA7 Oaks Bold Ruler who stands at Alta Genetics. He's in the top 35% for CED, 10% for WW, and 4% for YW EPD. You will also appreciate his top 10% \$Maternal Value while not sacrificing Carcass Merit. He's a super balanced bull, you can keep the daughters, sell scale-mashing feeder calves, or increase value in each calf crop on end product merit which will make your beef consumers very happy. Top 1% for \$Wean Index, don't miss that if you are selling calves at weaning!

TOP 10% TOP 25%



BEAR HILL
CATTLE COMPANY

Thank You



AMERICAN ANGUS ASSOCIATION SELECTION TOOLS

Expected Progeny Difference (EPD), is the prediction of how future progeny of each animal are expected to perform relative to the progeny of other animals listed in the database. EPDs are expressed in units of measure for the trait, plus or minus. Interim EPDs may appear on young animals when their performance has yet to be incorporated into the American Angus Association National Cattle Evaluation (NCE) procedures. This EPD will be preceded by an "I", and may or may not include the animal's own performance record for a particular trait, depending on its availability, appropriate contemporary grouping, or data edits needed for NCE.

PRODUCTION EPDS

Calving Ease Direct (CED), is expressed as a difference in percentage of unassisted births, with a higher value indicating greater calving ease in first-calf heifers. It predicts the average difference in ease with which a sire's calves will be born when he is bred to first-calf heifers.

Birth Weight EPD (BW), expressed in pounds, is a predictor of a sire's ability to transmit birth weight to his progeny compared to that of other sires.

Weaning Weight EPD (WW), expressed in pounds, is a predictor of a sire's ability to transmit weaning growth to his progeny compared to that of other sires.

Yearling Weight EPD (YW), expressed in pounds, is a predictor of a sire's ability to transmit yearling growth to his progeny compared to that of other sires.

Scrotal Circumference EPD (SC), expressed in centimeters, is a predictor of the difference in transmitting ability for scrotal size compared to that of other sires.

MATERNAL EPDS

Heifer Pregnancy (HP), is a selection tool to increase the probability or chance of a sire's daughters becoming pregnant as first-calf heifers during a normal breeding season. A higher EPD is the more favorable direction and the EPD is reported in percentage units.

Maternal Milk EPD (Milk), is a predictor of a sire's genetic merit for milk and mothering ability as expressed in his daughters compared to daughters of other sires. In other words, it is that part of a calf's weaning weight attributed to milk and mothering ability.

MANAGEMENT EPDS

Docility (Doc), is expressed as a difference in yearling cattle temperament, with a higher value indicating more favorable docility. It predicts the average difference of progeny from a sire in comparison with another sire's calves. In herds where temperament problems are not an issue, this expected difference would not be realized.

Claw Set EPD (Claw), is expressed in units of claw-set score, with a lower EPD being more favorable indicating a sire will produce progeny with more ideal claw set. The ideal

claw set is toes that are symmetrical, even and appropriately spaced.

Foot Angle EPD (Angle), is expressed in units of foot-angle score, with a lower EPD being more favorable indicating a sire will produce progeny with more ideal foot angle. The ideal is a 45-degree angle at the pastern joint with appropriate toe length and heel depth.

Hair Shed EPD (HS), is expressed in units of hair shed score, with a lower EPD being more favorable indicating a sire should produce progeny who shed their winter coat earlier in the spring. Selection for this trait should improve the genetic potential for a sire's progeny to shed off earlier increasing the environmental adaptability of cattle living in heat stressed areas and producers grazing endophyte-infected (hot) fescue.

CARCASS EPDS

Carcass Weight EPD (CWT), expressed in pounds is a predictor of the differences in hot carcass weight of a sire's progeny compared to progeny of other sires.

Marbling EPD (Marb), expressed as a fraction of the difference in USDA marbling score of a sire's progeny compared to progeny of other sires.

Ribeye Area EPD (Rib), expressed in square inches, is a predictor of the difference in ribeye area of a sire's progeny compared to progeny of other sires.

\$VALUE INDEXES

\$Value indexes, an economic selection index allows multiple change in several different traits at once pertaining to a specific breeding objective. The \$Value is an estimate of how future progeny of each sire are expected to perform, on average, compared to progeny of other sires if the sires were randomly mated to cows and if calves were exposed to the same environment.

Maternal Weaned Calf Value (\$M), an index, expressed in dollars per head, predicts profitability differences from conception to weaning with the underlying breeding objective assuming that individuals retain their own replacement females within herd and sell the rest of the cull female and all male progeny as feeder calves. The model

assumes commercial producers will replace 25% of their breeding females in the first generation and 20% of their breeding females in each subsequent generation. Traits included are as follows: calving ease direct, calving ease maternal, weaning weight, milk, heifer pregnancy, docility, mature cow weight, claw set and foot angle.

Weaned Calf Value (\$W), an index, expressed in dollars per head, to predict profitability differences in progeny due to genetics from birth to weaning. The underlying objective being producers will retain 20% of the female progeny as replacements and sell the rest of the cull females and their male counterparts as feeder calves. Traits included are as follows (in no particular order): birth weight, weaning weight, milk, and mature cow weight.

Beef Value (\$B), a terminal index, expressed in dollars per carcass, to predict profitability differences in progeny due to genetics for postweaning and carcass traits. This terminal index assumes commercial producers wean all male and female progeny, retain ownership of these animals through the feedlot phase and market these animals on a carcass grid. Traits included in the index are as follows: yearling weight, dry-matter intake, marbling, carcass weight, ribeye area and fat.

Combined Value (\$C), an index, expressed in dollars per head, which includes all traits that make up both Maternal Weaned Calf Value (\$M) and Beef Value (\$B) with the objective that commercial producers will replace 20% of their breeding females per year with replacement heifers retained within their own herd. The remaining cull heifer and steer progeny are then assumed to be sent to the feedlot where the producers retain ownership of those cattle and sell them on a quality-based carcass merit grid. Expected progeny differences (EPDs) directly influencing a combined index: calving ease direct (CED) and maternal (CEM), weaning weight (WW), yearling weight (YW), maternal milk (Milk), heifer pregnancy (HP), docility (DOC), mature cow weight (MW), foot angle (Angle), claw set (Claw), dry matter intake (DMI), marbling (Marb), carcass weight (CW), ribeye area (RE) and fat thickness (Fat).



Bear Hill Cattle Company
17122 Bellamy Brothers Blvd.
Dade City, FL 33523

PRSR
FIRST-CLASS
U.S. POSTAGE
PAID
St. Joseph, MO
Permit #2017



BEAR HILL
CATTLE COMPANY

Production Sale
MAY 23, 2026
6PM SALE TIME

